

Data Path : Z:\voasrv\HPCHEM1\MSVOA\_U\Data\VU123124\  
 Data File : VU062641.D  
 Acq On : 31 Dec 2024 11:29  
 Operator : MD/SY  
 Sample : VU1231WBL01  
 Misc : 25mL/MSVOA\_U/WATER  
 ALS Vial : 4 Sample Multiplier: 1

Instrument :  
 MSVOA\_U  
 ClientSampleId :  
 VBLK134

Integration Parameters: rteint.p  
 Integrator: RTE  
 Smoothing : ON  
 Sampling : 1  
 Start Thrs: 0.1  
 Stop Thrs : 0  
 Filtering: 5  
 Min Area: 3 % of largest Peak  
 Max Peaks: 100  
 Peak Location: TOP

If leading or trailing edge < 100 prefer < Baseline drop else tangent >  
 Peak separation: 5

Method : Z:\voasrv\HPCHEM1\MSVOA\_U\Method\SFAMUTR120924WMA.M  
 Title : TRACE VOA SFAM1.0

Signal : TIC: VU062641.D\data.ms

peak #	R.T. min	first scan	max scan	last scan	PK TY	peak height	corr. area	corr. % max.	% of total
1	1.589	85	93	110	rVB	29484	35009	12.32%	1.431%
2	1.901	182	190	205	rVB	24544	32242	11.35%	1.318%
3	2.554	381	393	408	rVB	56232	89961	31.66%	3.676%
4	2.673	423	430	438	rVB3	2343	3628	1.28%	0.148%
5	3.177	575	587	595	rBV2	1419	3359	1.18%	0.137%
6	3.692	738	747	753	rBV3	1636	2925	1.03%	0.120%
7	4.615	1024	1034	1068	rBV	36415	98384	34.63%	4.020%
8	5.049	1155	1169	1191	rBV	60021	134096	47.20%	5.480%
9	5.714	1357	1376	1398	rBV3	106752	284119	100.00%	11.610%
10	6.238	1528	1539	1564	rBV	113503	219105	77.12%	8.953%
11	6.534	1624	1631	1644	rVB4	3955	7285	2.56%	0.298%
12	6.679	1664	1676	1699	rBV2	65245	130006	45.76%	5.312%
13	7.557	1939	1949	1965	rBV	36810	65228	22.96%	2.665%
14	7.888	2041	2052	2069	rBV	131326	235132	82.76%	9.608%
15	8.174	2131	2141	2155	rBV	21672	38841	13.67%	1.587%
16	8.627	2271	2282	2313	rBV2	135553	260009	91.51%	10.625%
17	9.409	2514	2525	2547	rBV	154773	262521	92.40%	10.727%
18	10.746	2931	2941	2956	rBV2	54125	86896	30.58%	3.551%
19	11.804	3259	3270	3291	rBV	143834	242870	85.48%	9.924%
20	12.187	3377	3389	3414	rBV	125636	215587	75.88%	8.810%

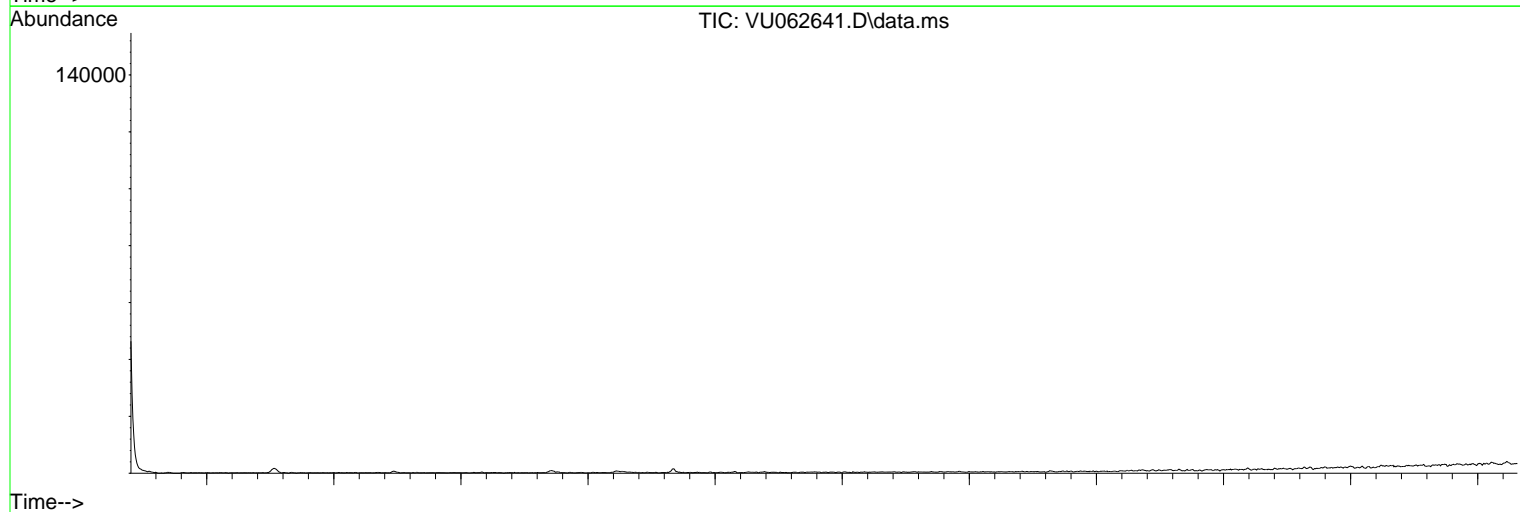
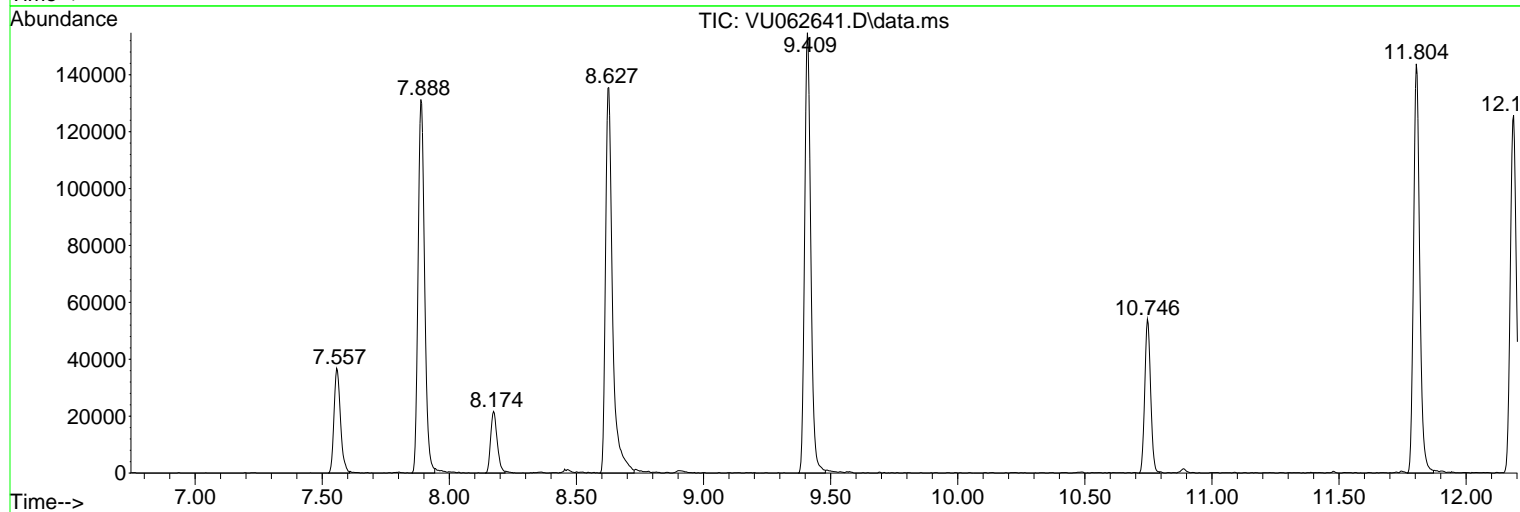
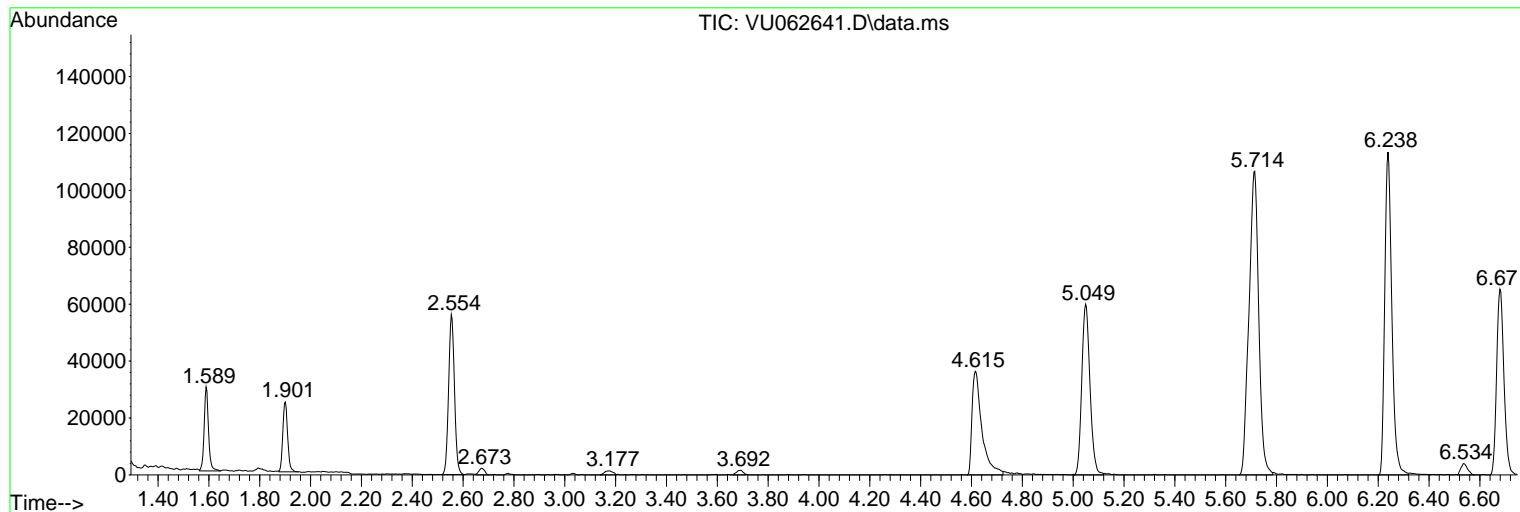
Sum of corrected areas: 2447203

Data Path : Z:\voasrv\HPCHEM1\MSVOA\_U\Data\VU123124\  
Data File : VU062641.D  
Acq On : 31 Dec 2024 11:29  
Operator : MD/SY  
Sample : VU1231WBL01  
Misc : 25mL/MSVOA\_U/WATER  
ALS Vial : 4 Sample Multiplier: 1

Instrument :  
MSVOA\_U  
ClientSampleId :  
VBLK134

Quant Method : Z:\voasrv\HPCHEM1\MSVOA\_U\Method\SFAMUTR120924WMA.M  
Quant Title : TRACE VOA SFAM1.0

TIC Library : C:\Database\NIST20.L  
TIC Integration Parameters: LSCINT.P



Library Search Compound Report

Data Path : Z:\voasrv\HPCHEM1\MSVOA\_U\Data\VU123124\  
Data File : VU062641.D  
Acq On : 31 Dec 2024 11:29  
Operator : MD/SY  
Sample : VU1231WBL01  
Misc : 25mL/MSVOA\_U/WATER  
ALS Vial : 4 Sample Multiplier: 1

Instrument :  
MSVOA\_U  
ClientSampleId :  
VBLK134

Quant Method : Z:\voasrv\HPCHEM1\MSVOA\_U\Method\SFAMUTR120924WMA.M  
Quant Title : TRACE VOA SFAM1.0

TIC Library : C:\Database\NIST20.L  
TIC Integration Parameters: LSCINT.P

No Library Search Compounds Detected

\*\*\*\*\*

Data Path : Z:\voasrv\HPCHEM1\MSVOA\_U\Data\VU123124\  
Data File : VU062641.D  
Acq On : 31 Dec 2024 11:29  
Operator : MD/SY  
Sample : VU1231WBL01  
Misc : 25mL/MSVOA\_U/WATER  
ALS Vial : 4 Sample Multiplier: 1

Instrument :  
MSVOA\_U  
ClientSampleId :  
VBLK134

Quant Method : Z:\voasrv\HPCHEM1\MSVOA\_U\Method\SFAMUTR120924WMA.M  
Quant Title : TRACE VOA SFAM1.0

TIC Library : C:\Database\NIST20.L  
TIC Integration Parameters: LSCINT.P

TIC Top Hit name	RT	EstConc	Units	Response	#	RT	Resp	Conc
------------------	----	---------	-------	----------	---	----	------	------

-----|