

Data Path : Z:\voasrv\HPCHEM1\MSVOA\_V\Data\VV010419\  
Quantitation Report (QT/LSC Reviewed)

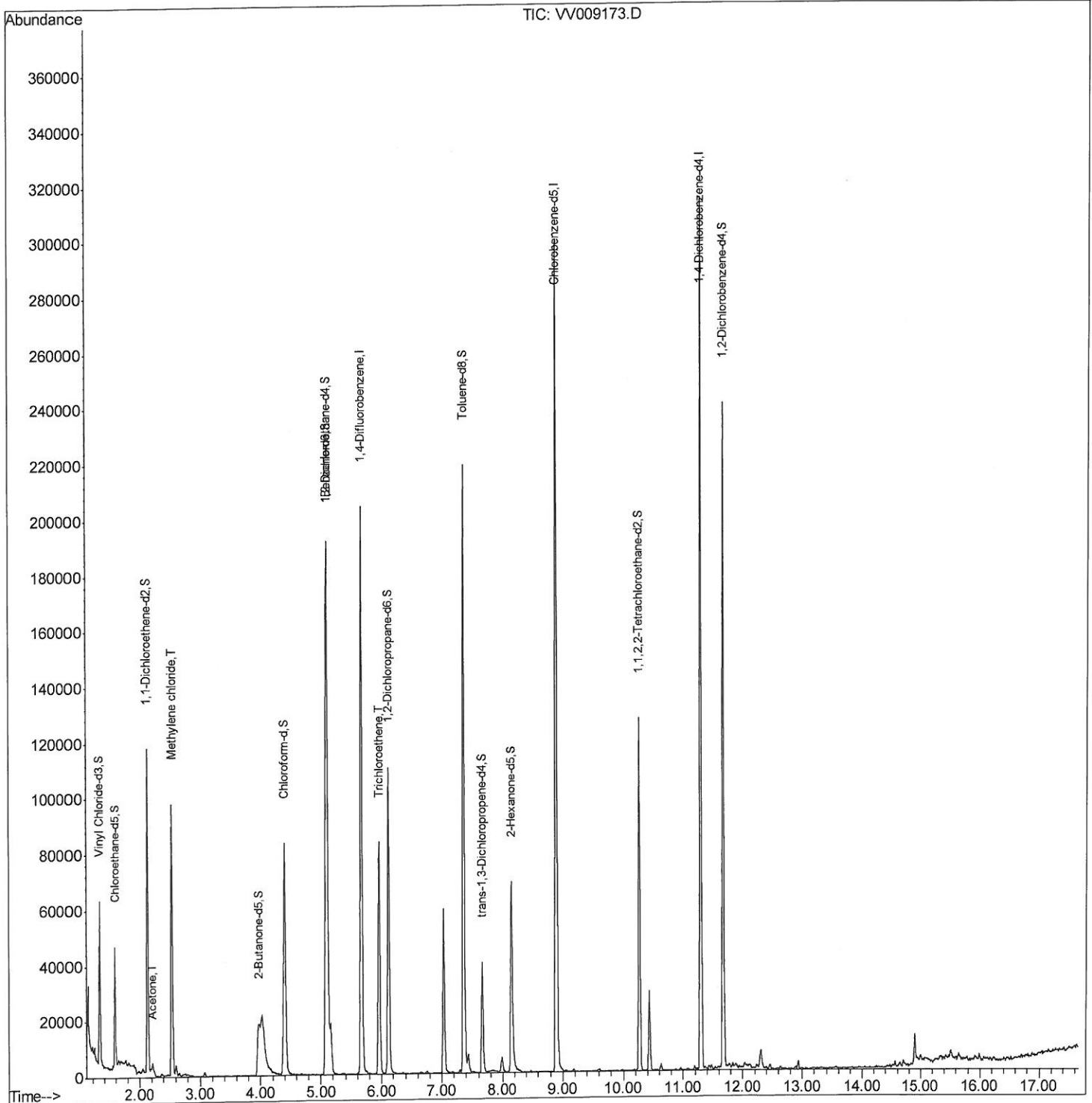
Data File : VV009173.D  
Acq On : 04 Jan 2019 22:17  
Operator : SY/MD  
Sample : K1051-04  
Misc : 6.57 G/10ML/MSVOA\_V/SOIL  
ALS Vial : 11 Sample Multiplier: 1

Instrument :  
MSVOA\_V  
Client Sampled :  
BE9X2

Manual Integrations  
APPROVED

MMDadoda  
1/8/2019 12:00:18 AM

Quant Time: Jan 05 05:58:52 2019  
Quant Method : Z:\VOASRV\HPCHEM1\MSVOA\_V\METHOD\SOM2VLM010419S.M  
Quant Title : VOC Analysis  
QLast Update : Sat Jan 05 05:00:49 2019  
Response via : Initial Calibration



Data Path : Z:\voasrv\HPCHEM1\MSVOA\_V\Data\VV010419\  
Quantitation Report (Qedit)

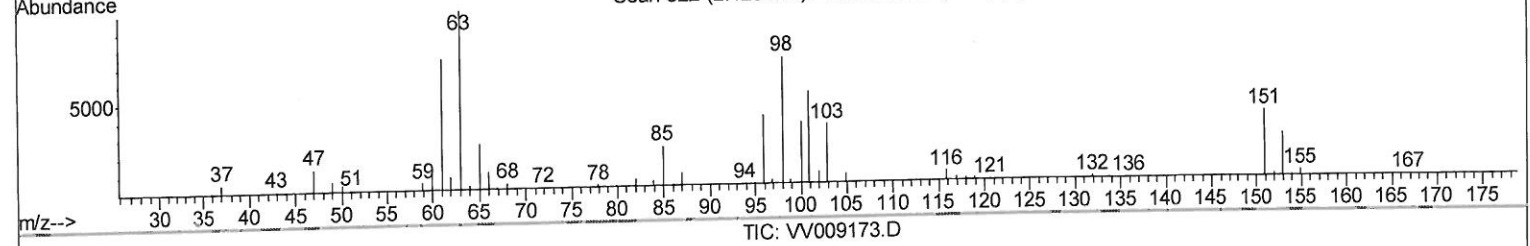
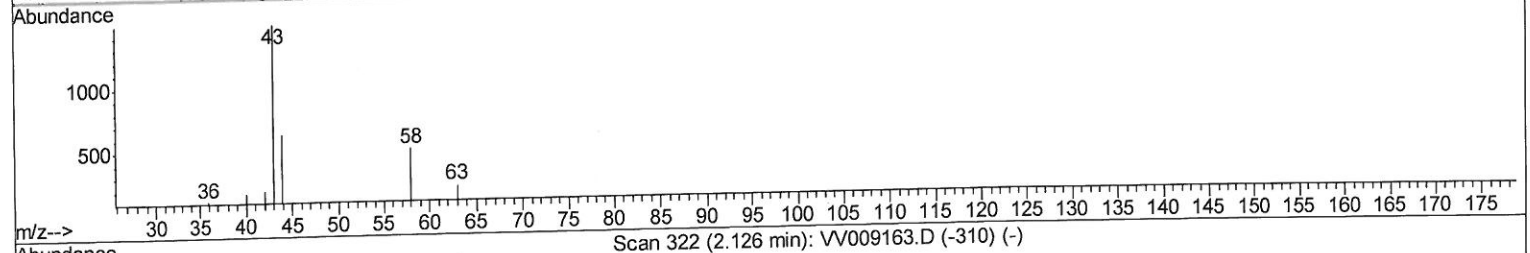
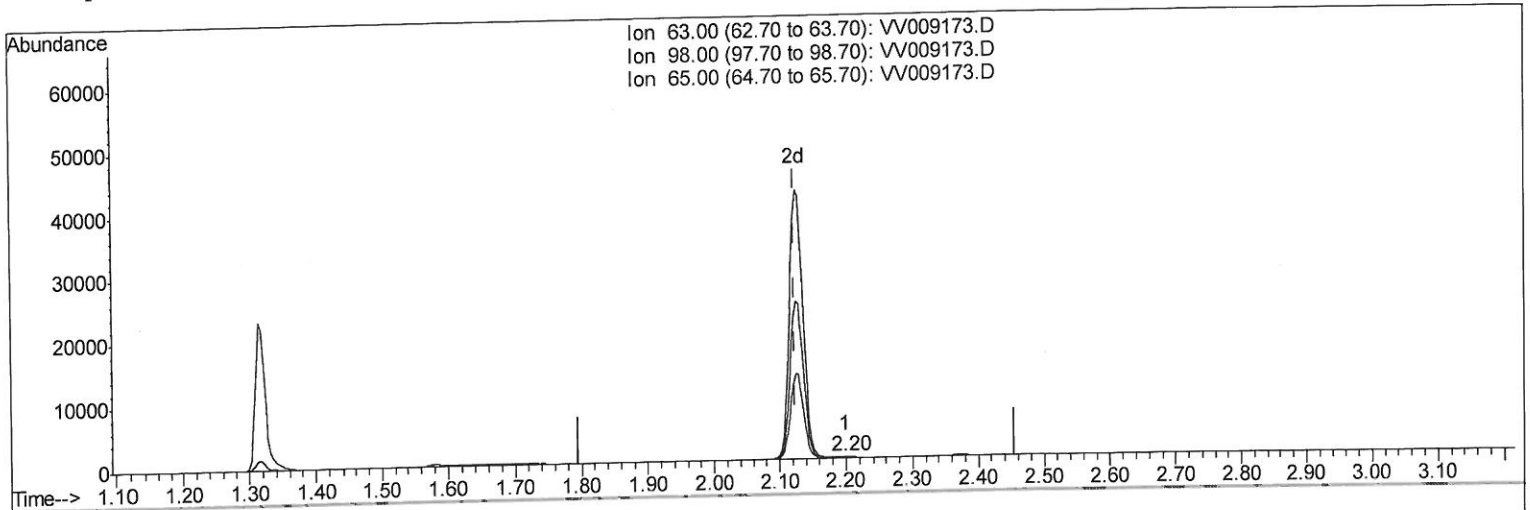
Data File : VV009173.D  
Acq On : 04 Jan 2019 22:17  
Operator : SY/MD  
Sample : K1051-04  
Misc : 6.57 G/10ML/MSVOA\_V/SOIL  
ALS Vial : 11 Sample Multiplier: 1

Instrument :  
MSVOA\_V  
ClientSampleId :  
BE9X2

Manual Integrations  
APPROVED

MMDadoda  
1/8/2019 12:00:18 AM

Quant Time: Jan 07 00:26:00 2019  
Quant Method : Z:\VOASRV\HPCHEM1\MSVOA\_V\METHOD\SOM2VLM010419S.M  
Quant Title : VOC Analysis  
QLast Update : Sat Jan 05 05:00:49 2019  
Response via : Initial Calibration



(10) 1,1-Dichloroethene-d2 (S)

2.200min (+0.074) 0.06ug/L

response 237

Ion	Exp%	Act%
63.00	100	100
98.00	79.30	57.38
65.00	22.50	17.30
0.00	0.00	0.00

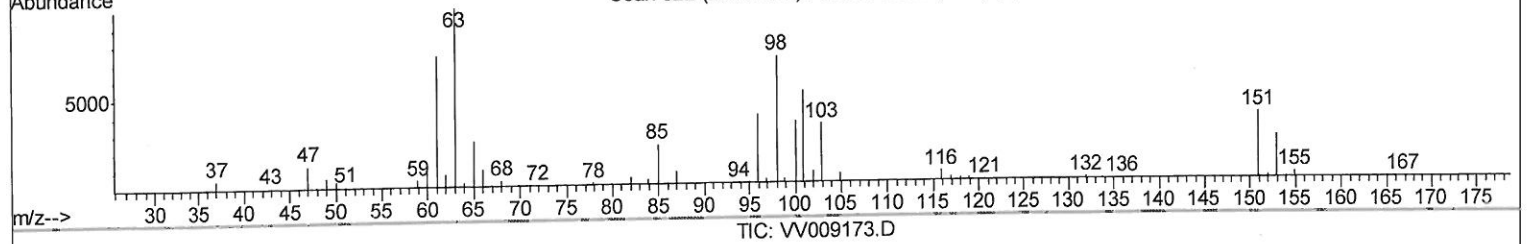
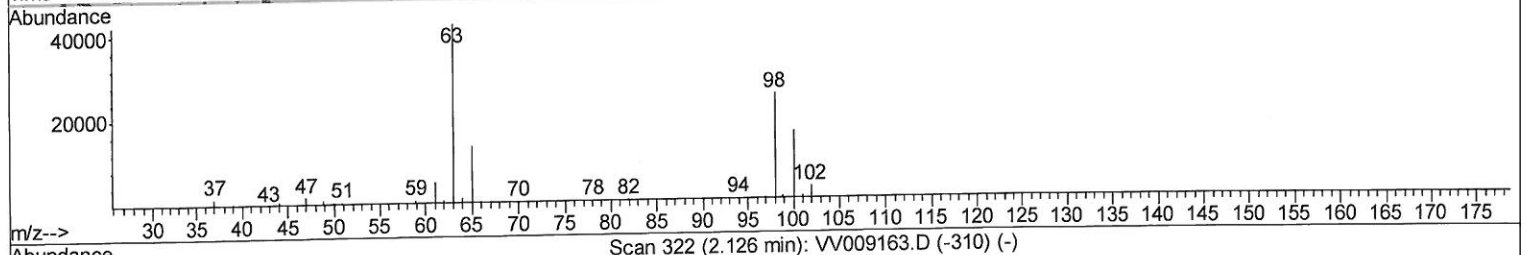
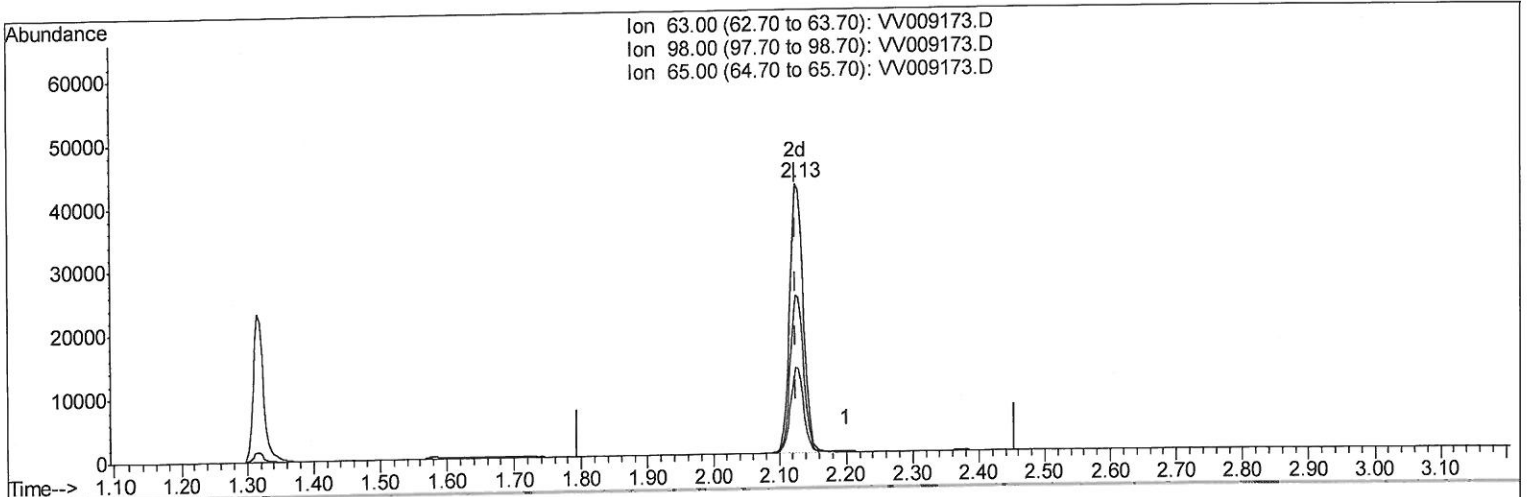
Data Path : Z:\voasrv\HPCHEM1\MSVOA\_V\Data\VV010419\  
 Quantitation Report (Qedit)

Data File : VV009173.D  
 Acq On : 04 Jan 2019 22:17  
 Operator : SY/MD  
 Sample : K1051-04  
 Misc : 6.57 G/10ML/MSVOA\_V/SOIL  
 ALS Vial : 11 Sample Multiplier: 1

Instrument :  
 MSVOA\_V  
 Client Sampled :  
 BE9X2

Manual Integrations  
**APPROVED**  
 MMDadoda  
 1/8/2019 12:00:18 AM

Quant Time: Jan 05 05:58:52 2019  
 Quant Method : Z:\VOASRV\HPCHEM1\MSVOA\_V\METHOD\SOM2VLM010419S.M  
 Quant Title : VOC Analysis  
 QLast Update : Sat Jan 05 05:00:49 2019  
 Response via : Initial Calibration



(10) 1,1-Dichloroethene-d2 (S)

2.126min (+0.000) 14.59ug/L m *01/07/19 sy*

response 60382

Ion	Exp%	Act%
63.00	100	100
98.00	79.30	0.23#
65.00	22.50	0.07#
0.00	0.00	0.00

Data Path : Z:\voasrv\HPCHEM1\MSVOA\_V\Data\VV010419\  
 Quantitation Report (QT/LSC Reviewed)

Data File : VV009173.D  
 Acq On : 04 Jan 2019 22:17  
 Operator : SY/MD  
 Sample : K1051-04  
 Misc : 6.57 G/10ML/MSVOA\_V/SOIL  
 ALS Vial : 11 Sample Multiplier: 1

Instrument :  
 MSVOA\_V  
 Client Sampled :  
 BE9X2

Manual Integrations  
 APPROVED

MMDadoda  
 1/8/2019 12:00:18 AM

Quant Time: Jan 05 05:58:52 2019  
 Quant Method : Z:\VOASRV\HPCHEM1\MSVOA\_V\METHOD\SOM2VLM010419S.M  
 Quant Title : VOC Analysis  
 QLast Update : Sat Jan 05 05:00:49 2019  
 Response via : Initial Calibration

Internal Standards	R.T.	QIon	Response	Conc	Units	Dev(Min)
1) 1,4-Difluorobenzene	5.66	114	181010	25.00	ug/L	0.00
28) Chlorobenzene-d5	8.90	117	171597	25.00	ug/L	0.00
60) 1,4-Dichlorobenzene-d4	11.30	152	85272	25.00	ug/L	0.00
System Monitoring Compounds						
4) Vinyl Chloride-d3	1.32	65	24203	19.55	ug/L	0.00
Spiked Amount	25.000	Range 30 - 150	Recovery =	78.20%		
7) Chloroethane-d5	1.58	69	24737	20.60	ug/L	0.00
Spiked Amount	25.000	Range 30 - 150	Recovery =	82.40%		
10) 1,1-Dichloroethene-d2	2.13	63	60382m	14.59	ug/L	0.00
Spiked Amount	25.000	Range 45 - 110	Recovery =	58.36%		
20) 2-Butanone-d5	3.96	46	33724	38.72	ug/L	0.00
Spiked Amount	50.000	Range 20 - 135	Recovery =	77.44%		
24) Chloroform-d	4.40	84	85866	22.53	ug/L	0.00
Spiked Amount	25.000	Range 40 - 150	Recovery =	90.12%		
26) 1,2-Dichloroethane-d4	5.08	65	51945	25.48	ug/L	0.00
Spiked Amount	25.000	Range 70 - 130	Recovery =	101.92%		
29) Benzene-d6	5.10	84	169763	22.20	ug/L	0.00
Spiked Amount	25.000	Range 20 - 135	Recovery =	88.80%		
33) 1,2-Dichloropropane-d6	6.12	67	51693	23.58	ug/L	0.00
Spiked Amount	25.000	Range 70 - 120	Recovery =	94.32%		
37) Toluene-d8	7.36	98	150067	20.81	ug/L	0.00
Spiked Amount	25.000	Range 30 - 130	Recovery =	83.24%		
38) trans-1,3-Dichloropropene-	7.67	79	22288	21.43	ug/L	0.00
Spiked Amount	25.000	Range 30 - 135	Recovery =	85.72%		
39) 2-Hexanone-d5	8.14	63	22717	43.91	ug/L	0.00
Spiked Amount	50.000	Range 20 - 135	Recovery =	87.82%		
48) 1,1,2,2-Tetrachloroethane-	10.26	84	59628	24.75	ug/L	0.00
Spiked Amount	25.000	Range 45 - 120	Recovery =	99.00%		
61) 1,2-Dichlorobenzene-d4	11.68	152	65865	22.85	ug/L	0.00
Spiked Amount	25.000	Range 75 - 120	Recovery =	91.40%		
Target Compounds						
13) Acetone	2.22	43	7714	6.249	ug/L	97
16) Methylene chloride	2.54	84	42117	15.574	ug/L	94
35) Trichloroethene	5.96	95	28889	10.870	ug/L	98

01/07/19 sy

(#) = qualifier out of range (m) = manual integration (+) = signals summed