

Data Path : Z:\VOASRV\HPCHEM1\MSVOA V\DATA\VV010821\  
 Data File : VV019952.D  
 Acq On : 08 Jan 2021 17:11  
 Operator : SY/MD  
 Sample : VIBLK78  
 Misc : 5.0mL/MSVOA V/WATER  
 ALS Vial : 1 Sample Multiplier: 1

Instrument :  
 MSVOA\_V  
 ClientSampleId :  
 VIBLK78

Integration Parameters: LSCINT.P

Integrator: RTE  
 Smoothing : OFF  
 Sampling : 1  
 Start Thrs: 0.2  
 Stop Thrs : 0

Filtering: 5  
 Min Area: 0 % of largest Peak  
 Max Peaks: 100  
 Peak Location: TOP

If leading or trailing edge < 100 prefer < Baseline drop else tangent >  
 Peak separation: 5

Method : Z:\VOASRV\HPCHEM1\MSVOA\_V\METHOD\SOMVLM122820WMA.M  
 Title : VOC Analysis

Signal : TIC

peak #	R.T. min	first scan	max scan	last scan	PK TY	peak height	corr. area	corr. % max.	% of total
1	1.309	62	68	86	rVB	254429	253892	12.96%	1.670%
2	1.569	143	149	162	rVB	224009	251386	12.83%	1.653%
3	2.110	308	317	346	rVB	432464	689580	35.20%	4.534%
4	2.409	409	410	412	rBV2	813	259	0.01%	0.002%
5	2.576	460	462	465	rVB4	927	352	0.02%	0.002%
6	2.601	468	470	473	rBV3	883	621	0.03%	0.004%
7	2.772	521	523	525	rBV2	858	540	0.03%	0.004%
8	2.855	546	549	551	rBV2	744	483	0.02%	0.003%
9	2.923	568	570	572	rVB3	550	211	0.01%	0.001%
10	2.955	577	580	584	rVB2	888	624	0.03%	0.004%
11	2.981	584	588	589	rBV4	1004	633	0.03%	0.004%
12	3.029	601	603	605	rBV3	419	229	0.01%	0.002%
13	3.106	623	627	630	rBV5	797	703	0.04%	0.005%
14	3.228	661	665	667	rBV5	792	650	0.03%	0.004%
15	3.257	672	674	675	rBV	549	282	0.01%	0.002%
16	3.296	684	686	688	rBV2	867	549	0.03%	0.004%
17	3.338	694	699	703	rBV6	874	772	0.04%	0.005%
18	3.376	710	711	714	rBV2	672	314	0.02%	0.002%
19	3.463	736	738	742	rVB3	794	305	0.02%	0.002%
20	3.482	742	744	747	rVB3	1353	662	0.03%	0.004%
21	3.595	775	779	780	rBV3	981	597	0.03%	0.004%
22	3.624	786	788	791	rVB2	919	411	0.02%	0.003%
23	3.659	796	799	800	rBV3	805	420	0.02%	0.003%
24	3.701	811	812	814	rBV2	481	198	0.01%	0.001%
25	3.727	818	820	822	rBV2	792	345	0.02%	0.002%
26	3.746	822	826	830	rBV6	993	931	0.05%	0.006%
27	3.785	835	838	839	rBV2	487	299	0.02%	0.002%
28	3.807	843	845	850	rVB5	920	547	0.03%	0.004%
29	3.833	850	853	856	rBV4	853	661	0.03%	0.004%
30	3.888	856	870	910	rBV	161377	479487	24.47%	3.153%
31	4.354	999	1015	1041	rBV	320746	788598	40.25%	5.186%
32	4.733	1132	1133	1134	rBV	804	228	0.01%	0.001%
33	4.814	1156	1158	1160	rBV3	676	389	0.02%	0.003%
34	4.868	1172	1175	1177	rBV2	838	550	0.03%	0.004%

Data Path : Z:\VOASRV\HPCHEM1\MSVOA V\DATA\VV010821\  
 Data File : VV019952.D  
 Acq On : 08 Jan 2021 17:11  
 Operator : SY/MD  
 Sample : VIBLK78  
 Misc : 5.0mL/MSVOA V/WATER  
 ALS Vial : 1 Sample Multiplier: 1

Instrument :  
 MSVOA\_V  
 ClientSampleId :  
 VIBLK78

## Integration Parameters: LSCINT.P

Integrator: RTE  
 Smoothing : OFF  
 Sampling : 1  
 Start Thrs: 0.2  
 Stop Thrs : 0

Filtering: 5  
 Min Area: 0 % of largest Peak  
 Max Peaks: 100  
 Peak Location: TOP

If leading or trailing edge < 100 prefer < Baseline drop else tangent >  
 Peak separation: 5

Method : Z:\VOASRV\HPCHEM1\MSVOA\_V\METHOD\SOMVLM122820WMA.M  
 Title : VOC Analysis

35	4.936	1194	1196	1200	rVB3	817	499	0.03%	0.003%
36	5.052	1213	1232	1258	rBV2	752893	1959127	100.00%	12.883%
37	5.367	1326	1330	1332	rBV3	1742	1087	0.06%	0.007%
38	5.482	1362	1366	1367	rBV3	855	476	0.02%	0.003%
39	5.569	1391	1393	1395	rBV3	856	348	0.02%	0.002%
40	5.621	1395	1409	1431	rBV	617336	1247860	63.69%	8.206%
41	5.910	1490	1499	1517	rVB3	40562	83215	4.25%	0.547%
42	6.074	1537	1550	1576	rBV	454644	914570	46.68%	6.014%
43	6.457	1665	1669	1674	rVB4	1903	1627	0.08%	0.011%
44	6.479	1674	1676	1679	rVB2	630	290	0.01%	0.002%
45	6.524	1688	1690	1693	rBV2	1413	797	0.04%	0.005%
46	6.752	1759	1761	1765	rVB3	952	653	0.03%	0.004%
47	6.772	1765	1767	1768	rBV2	652	279	0.01%	0.002%
48	6.839	1786	1788	1791	rBV3	560	253	0.01%	0.002%
49	6.990	1823	1835	1862	rBV	232558	431412	22.02%	2.837%
50	7.322	1926	1938	1964	rBV	842106	1455279	74.28%	9.569%
51	7.627	2023	2033	2054	rBV	161652	283500	14.47%	1.864%
52	7.875	2107	2110	2115	rBV6	1262	1169	0.06%	0.008%
53	7.913	2120	2122	2124	rBV3	770	323	0.02%	0.002%
54	8.093	2166	2178	2210	rBV2	487087	991728	50.62%	6.521%
55	8.473	2294	2296	2301	rBV3	1133	1096	0.06%	0.007%
56	8.540	2315	2317	2322	rVB4	1391	900	0.05%	0.006%
57	8.858	2403	2416	2440	rBV	939274	1551368	79.19%	10.201%
58	9.125	2496	2499	2502	rBV5	1016	686	0.04%	0.005%
59	9.251	2536	2538	2539	rBV2	836	262	0.01%	0.002%
60	9.328	2561	2562	2564	rBV2	627	231	0.01%	0.002%
61	9.344	2565	2567	2568	rBV2	850	292	0.01%	0.002%
62	9.431	2591	2594	2596	rVB2	629	362	0.02%	0.002%
63	9.511	2615	2619	2620	rBV3	517	311	0.02%	0.002%
64	9.569	2635	2637	2641	rBV3	1023	650	0.03%	0.004%
65	9.585	2641	2642	2645	rVV2	698	283	0.01%	0.002%
66	9.736	2687	2689	2693	rBV3	733	407	0.02%	0.003%
67	9.804	2705	2710	2713	rBV5	1717	1484	0.08%	0.010%
68	10.103	2801	2803	2805	rBV3	544	218	0.01%	0.001%
69	10.157	2817	2820	2822	rBV2	1275	847	0.04%	0.006%
70	10.222	2828	2840	2860	rBV	555058	875513	44.69%	5.757%
71	10.386	2888	2891	2892	rBV2	924	615	0.03%	0.004%

Data Path : Z:\VOASRV\HPCHEM1\MSVOA V\DATA\VV010821\  
 Data File : VV019952.D  
 Acq On : 08 Jan 2021 17:11  
 Operator : SY/MD  
 Sample : VIBLK78  
 Misc : 5.0mL/MSVOA V/WATER  
 ALS Vial : 1 Sample Multiplier: 1

Instrument :  
 MSVOA\_V  
 ClientSampleId :  
 VIBLK78

## Integration Parameters: LSCINT.P

Integrator: RTE  
 Smoothing : OFF  
 Sampling : 1  
 Start Thrs: 0.2  
 Stop Thrs : 0

Filtering: 5  
 Min Area: 0 % of largest Peak  
 Max Peaks: 100  
 Peak Location: TOP

If leading or trailing edge < 100 prefer < Baseline drop else tangent >  
 Peak separation: 5

Method : Z:\VOASRV\HPCHEM1\MSVOA\_V\METHOD\SOMVLM122820WMA.M  
 Title : VOC Analysis

72	10.492	2921	2924	2925	rBV	454	308	0.02%	0.002%
73	10.518	2928	2932	2935	rBV2	1036	781	0.04%	0.005%
74	10.611	2959	2961	2963	rBV3	586	287	0.01%	0.002%
75	10.637	2968	2969	2971	rVB	713	274	0.01%	0.002%
76	10.653	2971	2974	2975	rBV3	408	208	0.01%	0.001%
77	10.685	2982	2984	2986	rVB2	905	337	0.02%	0.002%
78	10.900	3048	3051	3053	rBV2	1018	680	0.03%	0.004%
79	10.910	3053	3054	3055	rBV	905	259	0.01%	0.002%
80	11.100	3111	3113	3116	rBV2	577	305	0.02%	0.002%
81	11.254	3150	3161	3180	rBV	968391	1499296	76.53%	9.859%
82	11.588	3261	3265	3266	rBV4	1070	870	0.04%	0.006%
83	11.630	3267	3278	3299	rVV	897347	1403964	71.66%	9.232%
84	11.935	3371	3373	3376	rBV3	793	417	0.02%	0.003%
85	12.042	3402	3406	3407	rBV4	866	566	0.03%	0.004%
86	12.099	3422	3424	3425	rBV2	800	339	0.02%	0.002%
87	12.151	3436	3440	3445	rBV6	1186	1339	0.07%	0.009%
88	12.325	3492	3494	3498	rBV4	712	474	0.02%	0.003%
89	12.434	3526	3528	3529	rBV	702	296	0.02%	0.002%
90	12.456	3533	3535	3538	rBV3	753	446	0.02%	0.003%
91	12.550	3559	3564	3567	rBV5	1302	1332	0.07%	0.009%
92	12.849	3655	3657	3658	rVB2	954	298	0.02%	0.002%
93	12.980	3696	3698	3700	rBV2	979	553	0.03%	0.004%
94	13.276	3783	3790	3793	rBV7	1179	1562	0.08%	0.010%
95	13.376	3817	3821	3825	rBV5	1839	1764	0.09%	0.012%
96	13.453	3841	3845	3849	rBV6	1405	1417	0.07%	0.009%
97	13.710	3922	3925	3927	rBV3	809	514	0.03%	0.003%
98	13.797	3949	3952	3955	rBV4	980	706	0.04%	0.005%
99	13.980	4007	4009	4012	rVB2	1416	633	0.03%	0.004%
100	14.000	4012	4015	4016	rBV2	1053	547	0.03%	0.004%

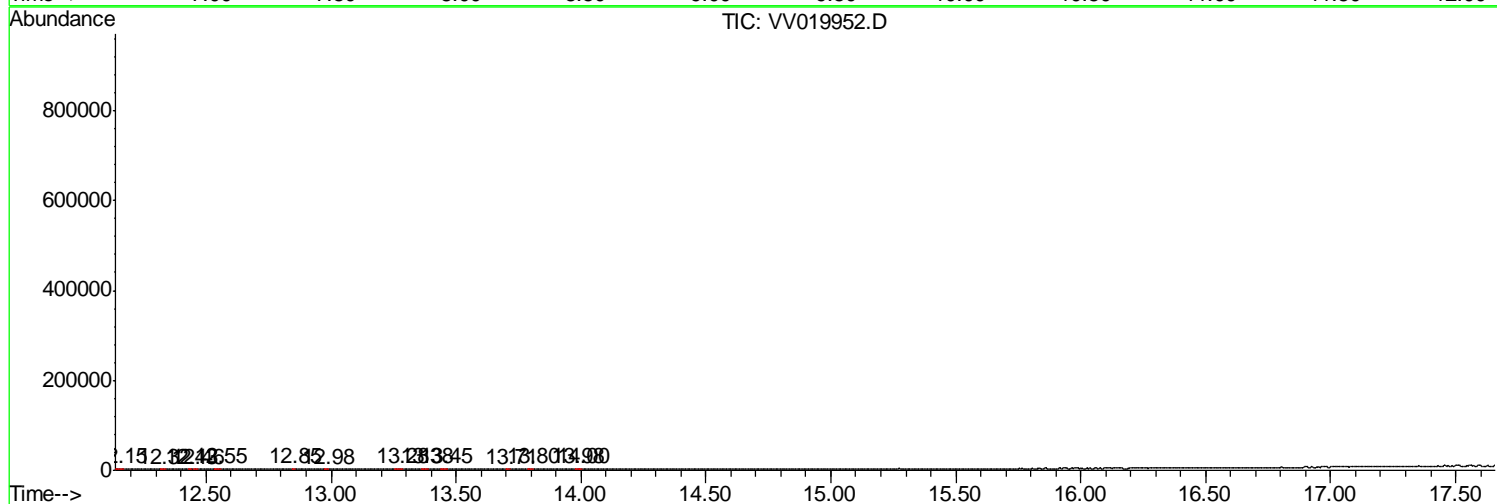
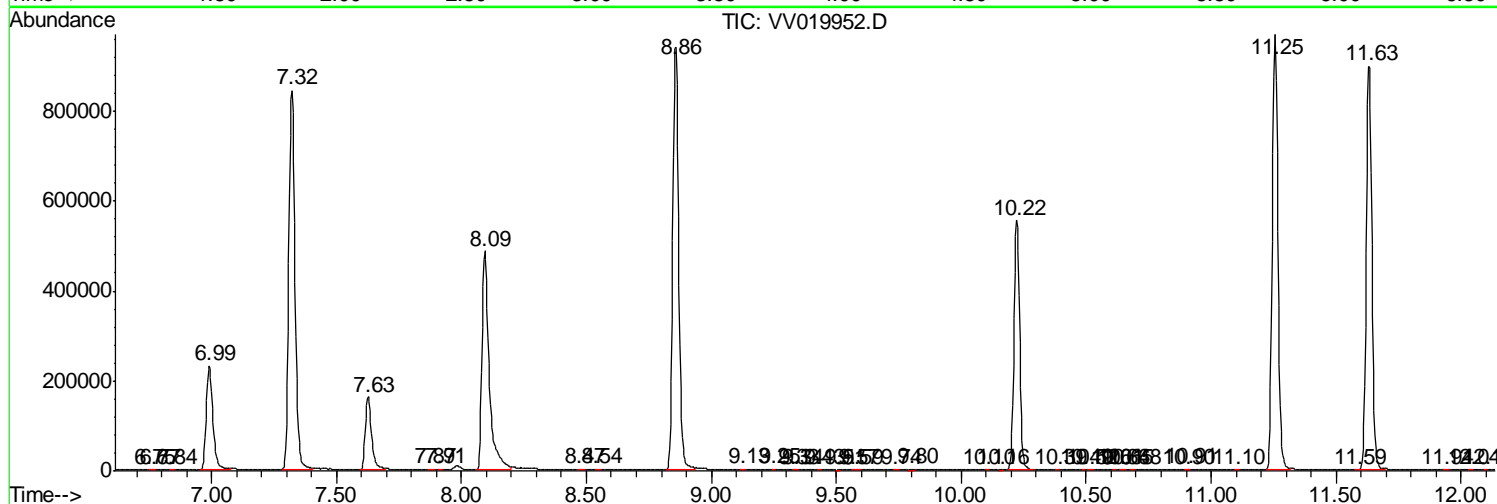
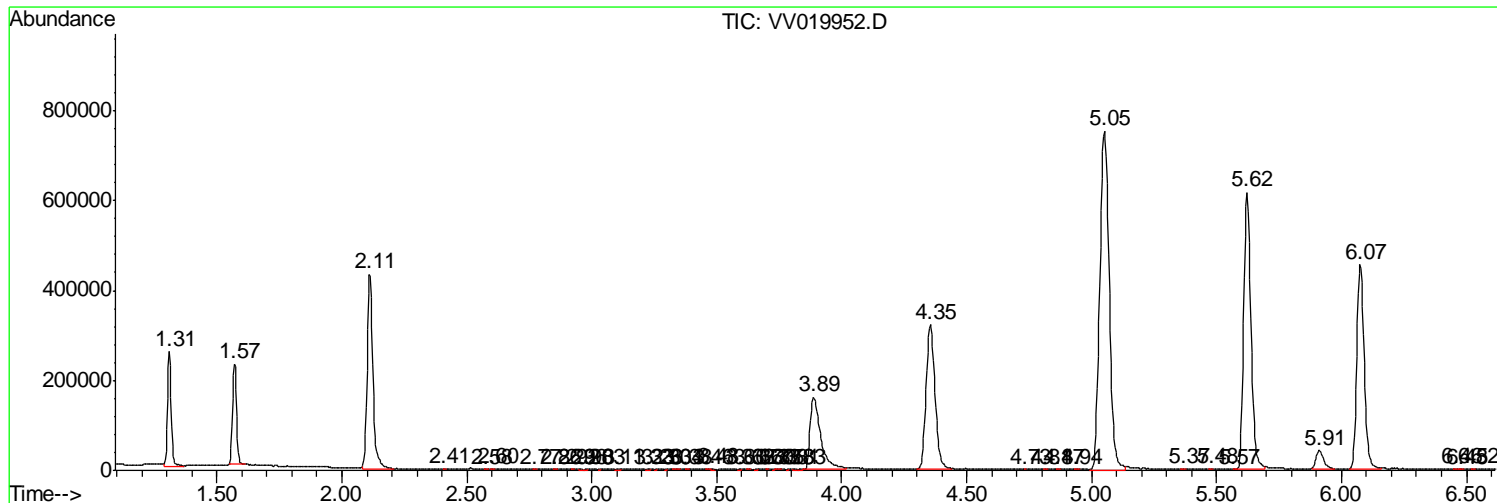
Sum of corrected areas: 15207497

Data Path : Z:\VOASRV\HPCHEM1\MSVOA V\DATA\VV010821\  
 Data File : VV019952.D  
 Acq On : 08 Jan 2021 17:11  
 Operator : SY/MD  
 Sample : VIBLK78  
 Misc : 5.0mL/MSVOA V/WATER  
 ALS Vial : 1 Sample Multiplier: 1

Instrument :  
 MSVOA\_V  
 ClientSampled :  
 VIBLK78

Quant Method : Z:\VOASRV\HPCHEM1\MSVOA\_V\METHOD\SOMVLM122820WMA.M  
 Quant Title : VOC Analysis

TIC Library : C:\DATABASE\NIST11.L  
 TIC Integration Parameters: LSCINT.P



Data Path : Z:\VOASRV\HPCHEM1\MSVOA\_V\DATA\VV010821\  
Data File : VV019952.D  
Acq On : 08 Jan 2021 17:11  
Operator : SY/MD  
Sample : VIBLK78  
Misc : 5.0mL/MSVOA\_V/WATER  
ALS Vial : 1 Sample Multiplier: 1

Instrument :  
MSVOA\_V  
ClientSampleId :  
VIBLK78

Quant Method : Z:\VOASRV\HPCHEM1\MSVOA\_V\METHOD\SOMVLM122820WMA.M  
Quant Title : VOC Analysis

TIC Library : C:\DATABASE\NIST11.L  
TIC Integration Parameters: LSCINT.P

No Library Search Compounds Detected

\*\*\*\*\*

Data Path : Z:\VOASRV\HPCHEM1\MSVOA\_V\DATA\VV010821\  
Data File : VV019952.D  
Acq On : 08 Jan 2021 17:11  
Operator : SY/MD  
Sample : VIBLK78  
Misc : 5.0mL/MSVOA\_V/WATER  
ALS Vial : 1 Sample Multiplier: 1

Instrument :  
MSVOA\_V  
ClientSampleId :  
VIBLK78

Quant Method : Z:\VOASRV\HPCHEM1\MSVOA\_V\METHOD\SOMVLM122820WMA.M  
Quant Title : VOC Analysis

TIC Library : C:\DATABASE\NIST11.L  
TIC Integration Parameters: LSCINT.P

TIC Top Hit name	RT	EstConc	Units	Response	--Internal Standard--			
					#	RT	Resp	Conc

---