

Data Path : Z:\voasrv\HPCHEM1\MSVOA_V\Data\VV011121\
 Data File : VV019971.D
 Acq On : 11 Jan 2021 17:05
 Operator : SY/MD
 Sample : M1064-03DL 250X
 Misc : 5.0mL/MSVOA_V/WATER
 ALS Vial : 1 Sample Multiplier: 1

Instrument :
 MSVOA_V
 ClientSampleID :
 BG4X4DL

Integration Parameters: LSCINT.P

Integrator: RTE
 Smoothing : OFF Filtering: 5
 Sampling : 1 Min Area: 0 % of largest Peak
 Start Thrs: 0.2 Max Peaks: 100
 Stop Thrs : 0 Peak Location: TOP

If leading or trailing edge < 100 prefer < Baseline drop else tangent >
 Peak separation: 5

Method : Z:\VOASRV\HPCHEM1\MSVOA_V\METHOD\SOMVLM011121WMA.M
 Title : VOC Analysis

Signal : TIC: VV019971.D\data.ms

peak #	R.T. min	first scan	max scan	last scan	PK TY	peak height	corr. area	corr. % max.	% of total
1	1.309	61	68	86	rVB	275216	275887	12.05%	1.760%
2	1.569	142	149	162	rVB	220385	249255	10.89%	1.590%
3	2.110	307	317	344	rVB	450462	683002	29.84%	4.357%
4	2.476	427	431	434	rBV4	936	774	0.03%	0.005%
5	2.675	489	493	497	rBV5	551	478	0.02%	0.003%
6	2.749	512	516	517	rBV2	651	325	0.01%	0.002%
7	2.794	528	530	532	rBV2	509	231	0.01%	0.001%
8	2.852	547	548	554	rVB2	584	379	0.02%	0.002%
9	2.913	566	567	569	rBV2	493	231	0.01%	0.001%
10	2.955	576	580	581	rBV2	927	634	0.03%	0.004%
11	3.013	595	598	599	rBV	638	347	0.02%	0.002%
12	3.048	606	609	615	rVB5	707	518	0.02%	0.003%
13	3.203	655	657	662	rVB4	925	526	0.02%	0.003%
14	3.225	662	664	667	rBV3	593	278	0.01%	0.002%
15	3.270	677	678	680	rBV	483	204	0.01%	0.001%
16	3.466	737	739	741	rVB2	604	186	0.01%	0.001%
17	3.499	745	749	754	rBV6	791	763	0.03%	0.005%
18	3.556	763	767	770	rBV3	547	462	0.02%	0.003%
19	3.589	774	777	782	rVB3	599	525	0.02%	0.003%
20	3.618	783	786	789	rBV2	481	365	0.02%	0.002%
21	3.653	795	797	800	rBV2	455	280	0.01%	0.002%
22	3.691	806	809	810	rBV2	303	169	0.01%	0.001%
23	3.756	826	829	835	rVB3	602	529	0.02%	0.003%
24	3.785	835	838	839	rBV	312	189	0.01%	0.001%
25	3.794	839	841	844	rVV4	503	251	0.01%	0.002%
26	3.839	853	855	860	rBV3	716	418	0.02%	0.003%
27	3.897	862	873	906	rBV	113573	369354	16.14%	2.356%
28	4.354	999	1015	1043	rBV	290826	714550	31.22%	4.559%
29	4.714	1125	1127	1128	rBV	430	208	0.01%	0.001%
30	4.798	1151	1153	1155	rBV3	480	288	0.01%	0.002%
31	4.833	1162	1164	1166	rBV2	593	309	0.01%	0.002%
32	4.862	1171	1173	1177	rVV3	762	515	0.02%	0.003%
33	4.926	1190	1193	1195	rBV2	1089	589	0.03%	0.004%
34	4.987	1209	1212	1214	rBV2	702	534	0.02%	0.003%
35	5.052	1214	1232	1265	rVV2	679279	1747455	76.36%	11.148%
36	5.437	1350	1352	1355	rVB3	771	359	0.02%	0.002%

Data Path : Z:\voasrv\HPCHEM1\MSVOA_V\Data\VV011121\
 Data File : VV019971.D
 Acq On : 11 Jan 2021 17:05
 Operator : SY/MD
 Sample : M1064-03DL 250X
 Misc : 5.0mL/MSVOA_V/WATER
 ALS Vial : 1 Sample Multiplier: 1

Instrument :
 MSVOA_V
 ClientSampleID :
 BG4X4DL

Integration Parameters: LSCINT.P

Integrator: RTE
 Smoothing : OFF Filtering: 5
 Sampling : 1 Min Area: 0 % of largest Peak
 Start Thrs: 0.2 Max Peaks: 100
 Stop Thrs : 0 Peak Location: TOP

If leading or trailing edge < 100 prefer < Baseline drop else tangent >
 Peak separation: 5

Method : Z:\VOASRV\HPCHEM1\MSVOA_V\METHOD\SOMVLM011121WMA.M
 Title : VOC Analysis

37	5.453	1355	1357	1358	rBV2	779	272	0.01%	0.002%
38	5.489	1363	1368	1370	rBV5	885	777	0.03%	0.005%
39	5.560	1387	1390	1392	rBV2	468	250	0.01%	0.002%
40	5.621	1396	1409	1436	rBV	498659	999172	43.66%	6.374%
41	5.823	1471	1472	1474	rBV	751	350	0.02%	0.002%
42	5.916	1487	1501	1522	rBV5	76119	178721	7.81%	1.140%
43	6.074	1536	1550	1571	rBV	394169	797445	34.84%	5.087%
44	6.444	1663	1665	1667	rBV2	774	409	0.02%	0.003%
45	6.479	1674	1676	1678	rBV	728	363	0.02%	0.002%
46	6.511	1684	1686	1690	rBV3	341	207	0.01%	0.001%
47	6.627	1718	1722	1726	rBV5	589	553	0.02%	0.004%
48	6.727	1751	1753	1754	rBV2	541	263	0.01%	0.002%
49	6.772	1765	1767	1768	rVV	467	194	0.01%	0.001%
50	6.794	1771	1774	1775	rBV2	354	201	0.01%	0.001%
51	6.823	1780	1783	1786	rBV4	556	361	0.02%	0.002%
52	6.881	1798	1801	1803	rBV4	627	474	0.02%	0.003%
53	6.916	1809	1812	1814	rBV2	521	351	0.02%	0.002%
54	6.929	1814	1816	1821	rVB5	885	656	0.03%	0.004%
55	6.990	1821	1835	1857	rBV	218433	397235	17.36%	2.534%
56	7.322	1925	1938	1959	rBV	774114	1336468	58.40%	8.526%
57	7.627	2022	2033	2054	rBV	149265	263306	11.51%	1.680%
58	7.981	2129	2143	2164	rBV	1386233	2288573	100.00%	14.600%
59	8.093	2169	2178	2212	rVV2	402200	789075	34.48%	5.034%
60	8.640	2347	2348	2351	rBV2	529	219	0.01%	0.001%
61	8.858	2403	2416	2437	rBV	768481	1245126	54.41%	7.943%
62	9.119	2495	2497	2502	rVB4	690	399	0.02%	0.003%
63	9.141	2502	2504	2505	rBV2	924	412	0.02%	0.003%
64	9.161	2509	2510	2511	rBV	773	277	0.01%	0.002%
65	9.286	2547	2549	2550	rBV	529	215	0.01%	0.001%
66	9.347	2566	2568	2572	rVB2	1139	722	0.03%	0.005%
67	9.370	2572	2575	2577	rBV3	567	325	0.01%	0.002%
68	9.383	2577	2579	2584	rBV2	716	673	0.03%	0.004%
69	9.431	2592	2594	2596	rBV	971	652	0.03%	0.004%
70	9.511	2617	2619	2622	rBV2	661	443	0.02%	0.003%
71	9.746	2686	2692	2693	rBV3	686	559	0.02%	0.004%
72	9.813	2710	2713	2718	rVB4	1033	990	0.04%	0.006%
73	9.849	2718	2724	2727	rBV4	885	992	0.04%	0.006%
74	9.875	2727	2732	2735	rBV4	654	743	0.03%	0.005%
75	9.910	2741	2743	2745	rBV3	520	233	0.01%	0.001%
76	9.923	2745	2747	2750	rVB2	761	296	0.01%	0.002%

Data Path : Z:\voasrv\HPCHEM1\MSVOA_V\Data\VW011121\
 Data File : VW019971.D
 Acq On : 11 Jan 2021 17:05
 Operator : SY/MD
 Sample : M1064-03DL 250X
 Misc : 5.0mL/MSVOA_V/WATER
 ALS Vial : 1 Sample Multiplier: 1

Instrument :
 MSVOA_V
 ClientSampled :
 BG4X4DL

Integration Parameters: LSCINT.P
 Integrator: RTE
 Smoothing : OFF Filtering: 5
 Sampling : 1 Min Area: 0 % of largest Peak
 Start Thrs: 0.2 Max Peaks: 100
 Stop Thrs : 0 Peak Location: TOP

If leading or trailing edge < 100 prefer < Baseline drop else tangent >
 Peak separation: 5

Method : Z:\VOASRV\HPCHEM1\MSVOA_V\METHOD\SOMVLM011121WMA.M
 Title : VOC Analysis

77	9.942	2750	2753	2755	rBV4	1109	582	0.03%	0.004%
78	10.032	2774	2781	2785	rBV5	765	896	0.04%	0.006%
79	10.129	2809	2811	2815	rBV4	763	539	0.02%	0.003%
80	10.222	2827	2840	2859	rBV	485187	757666	33.11%	4.834%
81	10.688	2981	2985	2986	rBV2	356	224	0.01%	0.001%
82	10.842	3029	3033	3035	rBV2	857	550	0.02%	0.004%
83	10.871	3040	3042	3046	rVV2	620	382	0.02%	0.002%
84	10.926	3053	3059	3061	rBV5	991	996	0.04%	0.006%
85	10.977	3072	3075	3078	rBV3	759	675	0.03%	0.004%
86	11.058	3096	3100	3102	rBV	535	405	0.02%	0.003%
87	11.083	3106	3108	3109	rBV	726	261	0.01%	0.002%
88	11.132	3117	3123	3126	rBV4	675	922	0.04%	0.006%
89	11.167	3132	3134	3136	rBV	512	295	0.01%	0.002%
90	11.186	3136	3140	3141	rBV	831	503	0.02%	0.003%
91	11.254	3149	3161	3181	rBV	804972	1253717	54.78%	7.998%
92	11.559	3254	3256	3259	rBV2	512	228	0.01%	0.001%
93	11.630	3266	3278	3296	rBV	821942	1286022	56.19%	8.204%
94	12.366	3505	3507	3508	rBV	500	181	0.01%	0.001%
95	12.823	3645	3649	3655	rBV	10635	6203	0.27%	0.040%
96	12.903	3670	3674	3676	rBV2	680	569	0.02%	0.004%
97	13.019	3708	3710	3711	rBV	548	249	0.01%	0.002%
98	14.115	4047	4051	4053	rVB2	568	432	0.02%	0.003%
99	14.141	4053	4059	4063	rBV5	1220	1587	0.07%	0.010%
100	14.906	4295	4297	4302	rBV3	737	544	0.02%	0.003%

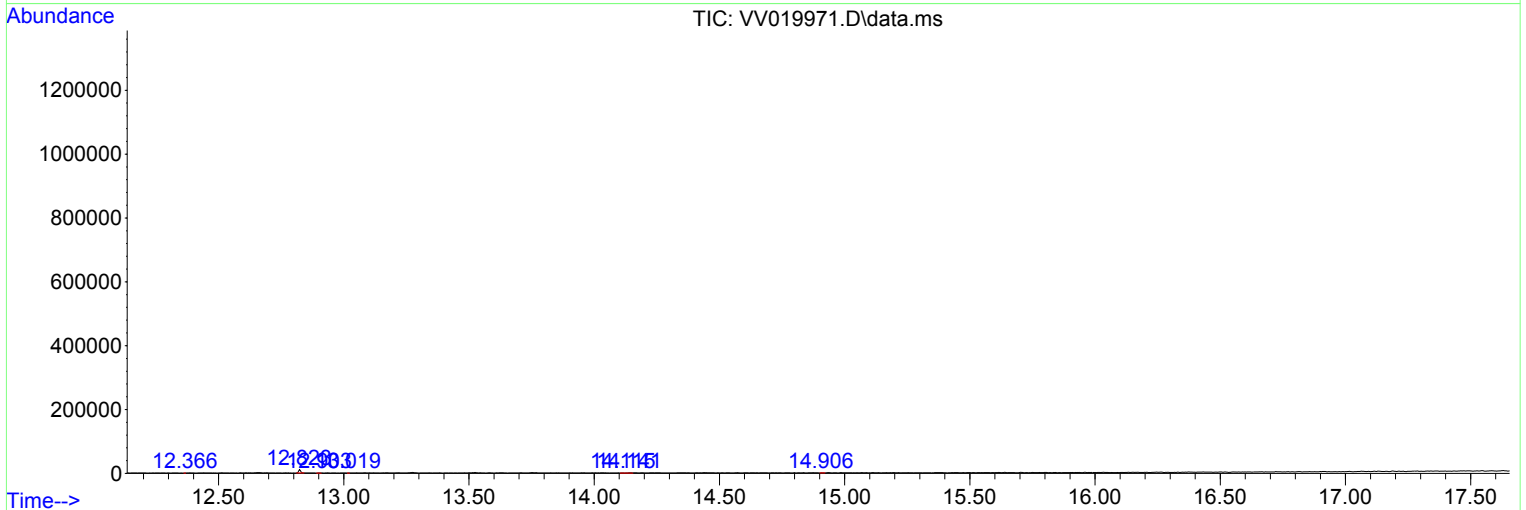
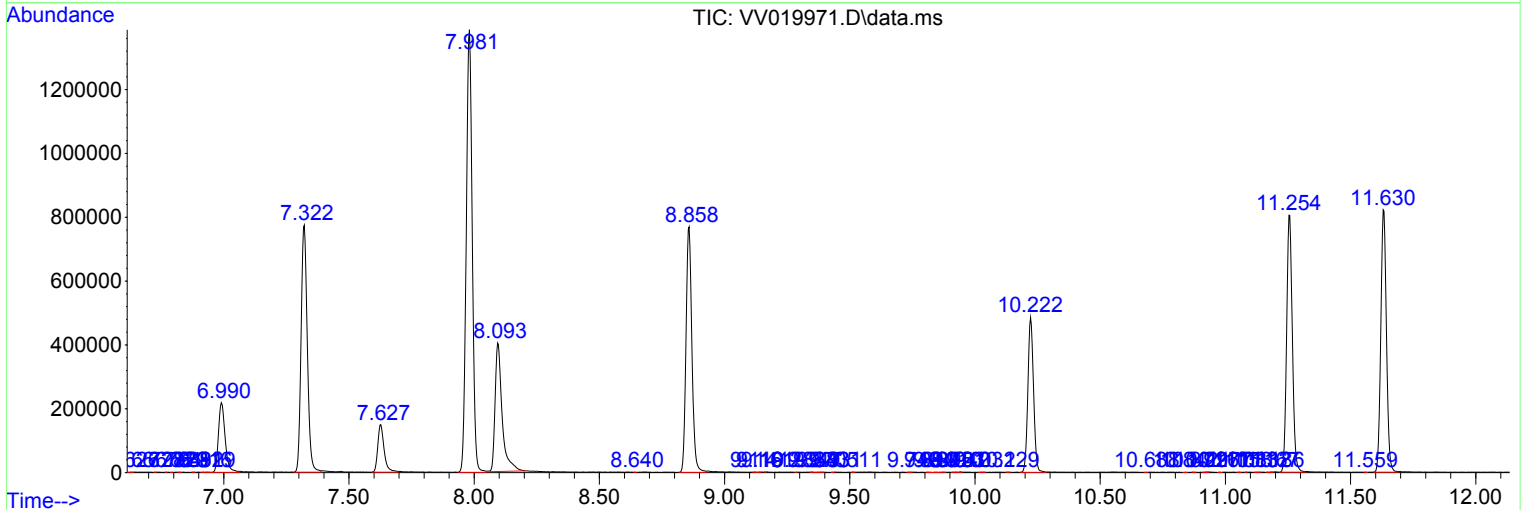
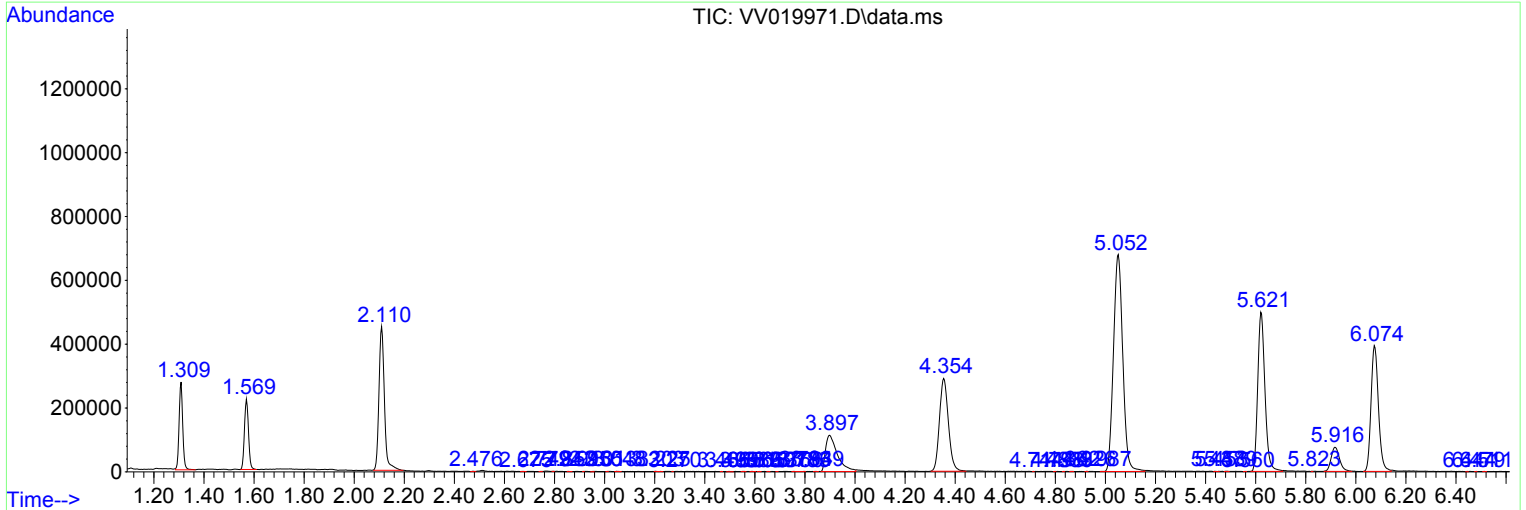
Sum of corrected areas: 15674947

Data Path : Z:\voasrv\HPCHEM1\MSVOA_V\Data\VV011121\
 Data File : VV019971.D
 Acq On : 11 Jan 2021 17:05
 Operator : SY/MD
 Sample : M1064-03DL 250X
 Misc : 5.0mL/MSVOA_V/WATER
 ALS Vial : 1 Sample Multiplier: 1

Instrument :
 MSVOA_V
 Client Sampled :
 BG4X4DL

Quant Method : Z:\VOASRV\HPCHEM1\MSVOA_V\METHOD\SOMVLM011121WMA.M
 Quant Title : VOC Analysis

TIC Library : C:\DATABASE\NIST11.L
 TIC Integration Parameters: LSCINT.P



Data Path : Z:\voasrv\HPCHEM1\MSVOA_V\Data\VV011121\
Data File : VV019971.D
Acq On : 11 Jan 2021 17:05
Operator : SY/MD
Sample : M1064-03DL 250X
Misc : 5.0mL/MSVOA_V/WATER
ALS Vial : 1 Sample Multiplier: 1

Instrument :
MSVOA_V
ClientSampled :
BG4X4DL

Quant Method : Z:\VOASRV\HPCHEM1\MSVOA_V\METHOD\SOMVLM011121WMA.M
Quant Title : VOC Analysis

TIC Library : C:\DATABASE\NIST11.L
TIC Integration Parameters: LSCINT.P

No Library Search Compounds Detected

Data Path : Z:\voasrv\HPCHEM1\MSVOA_V\Data\VV011121\
Data File : VV019971.D
Acq On : 11 Jan 2021 17:05
Operator : SY/MD
Sample : M1064-03DL 250X
Misc : 5.0mL/MSVOA_V/WATER
ALS Vial : 1 Sample Multiplier: 1

Instrument :
MSVOA_V
ClientSampleId :
BG4X4DL

Quant Method : Z:\VOASRV\HPCHEM1\MSVOA_V\METHOD\SOMVLM011121WMA.M
Quant Title : VOC Analysis

TIC Library : C:\DATABASE\NIST11.L
TIC Integration Parameters: LSCINT.P

TIC Top Hit name	RT	EstConc	Units	Response	--Internal Standard--			
					#	RT	Resp	Conc
