

Data Path : Z:\voasrv\HPCHEM1\MSVOA_V\Data\VV011124\
 Data File : VV033580.D
 Acq On : 11 Jan 2024 12:23
 Operator : SY/MD
 Sample : 05787-02
 Misc : 5.0mL/MSVOA_V/WATER
 ALS Vial : 5 Sample Multiplier: 1

Instrument :
 MSVOA_V
 ClientSampleId :
 VHBLK001

Integration Parameters: LSCINT.P

Integrator: RTE
 Smoothing : OFF
 Sampling : 1
 Start Thrs : 0.2
 Stop Thrs : 0

Filtering: 5
 Min Area: 0 % of largest Peak
 Max Peaks: 100
 Peak Location: TOP

If leading or trailing edge < 100 prefer < Baseline drop else tangent >
 Peak separation: 5

Method : Z:\voasrv\HPCHEM1\MSVOA_V\Method\SFAMVLM011024WMA.M
 Title : VOC Analysis

Signal : TIC: VV033580.D\data.ms

| peak # | R.T. min | first scan | max scan | last scan | PK TY | peak height | corr. area | corr. % max. | % of total |
|--------|----------|------------|----------|-----------|-------|-------------|------------|--------------|------------|
| 1 | 1.281 | 69 | 75 | 87 | rVB | 164145 | 169812 | 12.67% | 1.722% |
| 2 | 1.532 | 146 | 153 | 167 | rVB | 143179 | 172231 | 12.85% | 1.747% |
| 3 | 2.063 | 309 | 318 | 349 | rVB | 278314 | 435072 | 32.47% | 4.412% |
| 4 | 3.137 | 650 | 652 | 658 | rVB5 | 689 | 543 | 0.04% | 0.006% |
| 5 | 3.185 | 664 | 667 | 668 | rBV | 257 | 175 | 0.01% | 0.002% |
| 6 | 3.342 | 715 | 716 | 717 | rBV | 365 | 126 | 0.01% | 0.001% |
| 7 | 3.455 | 747 | 751 | 754 | rBV2 | 442 | 345 | 0.03% | 0.003% |
| 8 | 3.522 | 770 | 772 | 775 | rBV3 | 272 | 203 | 0.02% | 0.002% |
| 9 | 3.706 | 827 | 829 | 833 | rBV3 | 276 | 168 | 0.01% | 0.002% |
| 10 | 3.725 | 833 | 835 | 838 | rBV2 | 238 | 119 | 0.01% | 0.001% |
| 11 | 3.741 | 838 | 840 | 841 | rBV | 342 | 177 | 0.01% | 0.002% |
| 12 | 3.783 | 844 | 853 | 891 | rBV | 103564 | 285275 | 21.29% | 2.893% |
| 13 | 4.249 | 984 | 998 | 1029 | rBV | 198950 | 513406 | 38.32% | 5.207% |
| 14 | 4.780 | 1161 | 1163 | 1166 | rVB2 | 398 | 152 | 0.01% | 0.002% |
| 15 | 4.847 | 1182 | 1184 | 1185 | rBV | 396 | 192 | 0.01% | 0.002% |
| 16 | 4.956 | 1201 | 1218 | 1257 | rBV2 | 497023 | 1339923 | 100.00% | 13.588% |
| 17 | 5.455 | 1371 | 1373 | 1375 | rBV2 | 529 | 284 | 0.02% | 0.003% |
| 18 | 5.535 | 1387 | 1398 | 1426 | rBV | 357105 | 735544 | 54.89% | 7.459% |
| 19 | 5.927 | 1517 | 1520 | 1523 | rBV4 | 590 | 441 | 0.03% | 0.004% |
| 20 | 5.989 | 1525 | 1539 | 1573 | rVV | 297819 | 630146 | 47.03% | 6.390% |
| 21 | 6.339 | 1645 | 1648 | 1653 | rVB3 | 431 | 321 | 0.02% | 0.003% |
| 22 | 6.374 | 1653 | 1659 | 1664 | rVB4 | 589 | 791 | 0.06% | 0.008% |
| 23 | 6.400 | 1664 | 1667 | 1670 | rBV3 | 598 | 387 | 0.03% | 0.004% |
| 24 | 6.426 | 1673 | 1675 | 1677 | rBV | 245 | 129 | 0.01% | 0.001% |
| 25 | 6.538 | 1707 | 1710 | 1711 | rBV3 | 356 | 175 | 0.01% | 0.002% |
| 26 | 6.580 | 1714 | 1723 | 1726 | rBV7 | 2099 | 3565 | 0.27% | 0.036% |
| 27 | 6.805 | 1790 | 1793 | 1796 | rVB2 | 440 | 250 | 0.02% | 0.003% |
| 28 | 6.825 | 1796 | 1799 | 1802 | rVB2 | 372 | 251 | 0.02% | 0.003% |
| 29 | 6.863 | 1809 | 1811 | 1814 | rVB3 | 338 | 151 | 0.01% | 0.002% |
| 30 | 6.915 | 1816 | 1827 | 1856 | rBV | 153960 | 297668 | 22.22% | 3.019% |
| 31 | 7.243 | 1918 | 1929 | 1953 | rBV | 586843 | 1031124 | 76.95% | 10.457% |
| 32 | 7.554 | 2017 | 2026 | 2056 | rBV | 107051 | 193166 | 14.42% | 1.959% |
| 33 | 7.818 | 2103 | 2108 | 2111 | rBV4 | 689 | 679 | 0.05% | 0.007% |
| 34 | 7.850 | 2116 | 2118 | 2121 | rVB2 | 281 | 141 | 0.01% | 0.001% |
| 35 | 7.911 | 2134 | 2137 | 2142 | rVB4 | 788 | 636 | 0.05% | 0.006% |
| 36 | 7.972 | 2149 | 2156 | 2158 | rBV4 | 616 | 617 | 0.05% | 0.006% |

Data Path : Z:\voasrv\HPCHEM1\MSVOA_V\Data\VW011124\
 Data File : VW033580.D
 Acq On : 11 Jan 2024 12:23
 Operator : SY/MD
 Sample : 05787-02
 Misc : 5.0mL/MSVOA_V/WATER
 ALS Vial : 5 Sample Multiplier: 1

Instrument :
 MSVOA_V
 ClientSampleId :
 VHBLK001

Integration Parameters: LSCINT.P

Integrator: RTE
 Smoothing : OFF
 Sampling : 1
 Start Thrs: 0.2
 Stop Thrs : 0

Filtering: 5
 Min Area: 0 % of largest Peak
 Max Peaks: 100
 Peak Location: TOP

If leading or trailing edge < 100 prefer < Baseline drop else tangent >
 Peak separation: 5

Method : Z:\voasrv\HPCHEM1\MSVOA_V\Method\SFAMVLM011024WMA.M
 Title : VOC Analysis

| | | | | | | | | | |
|----|--------|------|------|------|------|--------|--------|--------|--------|
| 37 | 8.024 | 2162 | 2172 | 2216 | rBV | 351509 | 693410 | 51.75% | 7.032% |
| 38 | 8.612 | 2352 | 2355 | 2357 | rBV3 | 453 | 287 | 0.02% | 0.003% |
| 39 | 8.783 | 2395 | 2408 | 2450 | rBV | 538910 | 908612 | 67.81% | 9.214% |
| 40 | 9.143 | 2517 | 2520 | 2523 | rBV4 | 471 | 287 | 0.02% | 0.003% |
| 41 | 9.194 | 2531 | 2536 | 2542 | rBV3 | 511 | 584 | 0.04% | 0.006% |
| 42 | 9.230 | 2542 | 2547 | 2550 | rBV3 | 339 | 419 | 0.03% | 0.004% |
| 43 | 9.271 | 2559 | 2560 | 2564 | rBV4 | 265 | 143 | 0.01% | 0.001% |
| 44 | 9.297 | 2564 | 2568 | 2575 | rVB4 | 496 | 472 | 0.04% | 0.005% |
| 45 | 9.329 | 2575 | 2578 | 2581 | rBV2 | 487 | 398 | 0.03% | 0.004% |
| 46 | 9.365 | 2587 | 2589 | 2592 | rBV2 | 218 | 125 | 0.01% | 0.001% |
| 47 | 9.381 | 2592 | 2594 | 2598 | rBV3 | 386 | 294 | 0.02% | 0.003% |
| 48 | 9.496 | 2621 | 2630 | 2633 | rBV4 | 1454 | 2307 | 0.17% | 0.023% |
| 49 | 9.590 | 2656 | 2659 | 2663 | rBV3 | 571 | 468 | 0.03% | 0.005% |
| 50 | 9.609 | 2663 | 2665 | 2667 | rVV | 352 | 179 | 0.01% | 0.002% |
| 51 | 9.625 | 2668 | 2670 | 2674 | rVB2 | 355 | 179 | 0.01% | 0.002% |
| 52 | 9.664 | 2679 | 2682 | 2685 | rBV3 | 393 | 214 | 0.02% | 0.002% |
| 53 | 9.680 | 2685 | 2687 | 2690 | rBV2 | 206 | 133 | 0.01% | 0.001% |
| 54 | 9.731 | 2700 | 2703 | 2707 | rBV4 | 376 | 304 | 0.02% | 0.003% |
| 55 | 9.808 | 2723 | 2727 | 2730 | rBV3 | 415 | 370 | 0.03% | 0.004% |
| 56 | 9.876 | 2741 | 2748 | 2758 | rBV9 | 1759 | 2901 | 0.22% | 0.029% |
| 57 | 9.914 | 2758 | 2760 | 2763 | rVB3 | 342 | 174 | 0.01% | 0.002% |
| 58 | 9.972 | 2774 | 2778 | 2780 | rBV4 | 504 | 311 | 0.02% | 0.003% |
| 59 | 10.001 | 2785 | 2787 | 2789 | rBV | 266 | 147 | 0.01% | 0.001% |
| 60 | 10.050 | 2797 | 2802 | 2807 | rBV3 | 317 | 330 | 0.02% | 0.003% |
| 61 | 10.082 | 2807 | 2812 | 2815 | rBV6 | 578 | 437 | 0.03% | 0.004% |
| 62 | 10.152 | 2818 | 2834 | 2858 | rBV | 373962 | 598109 | 44.64% | 6.066% |
| 63 | 10.326 | 2885 | 2888 | 2891 | rBV3 | 515 | 324 | 0.02% | 0.003% |
| 64 | 10.358 | 2895 | 2898 | 2900 | rBV | 420 | 261 | 0.02% | 0.003% |
| 65 | 10.403 | 2909 | 2912 | 2914 | rBV3 | 284 | 156 | 0.01% | 0.002% |
| 66 | 10.484 | 2929 | 2937 | 2944 | rBV6 | 1788 | 2831 | 0.21% | 0.029% |
| 67 | 10.567 | 2959 | 2963 | 2966 | rBV2 | 437 | 330 | 0.02% | 0.003% |
| 68 | 10.586 | 2966 | 2969 | 2974 | rVV4 | 666 | 613 | 0.05% | 0.006% |
| 69 | 10.619 | 2975 | 2979 | 2983 | rVV3 | 342 | 249 | 0.02% | 0.003% |
| 70 | 10.670 | 2992 | 2995 | 2997 | rBV2 | 317 | 174 | 0.01% | 0.002% |
| 71 | 10.750 | 3015 | 3020 | 3021 | rBV3 | 403 | 295 | 0.02% | 0.003% |
| 72 | 10.860 | 3047 | 3054 | 3056 | rBV3 | 1515 | 1737 | 0.13% | 0.018% |
| 73 | 10.921 | 3070 | 3073 | 3076 | rBV3 | 469 | 368 | 0.03% | 0.004% |
| 74 | 11.014 | 3100 | 3102 | 3106 | rVB3 | 257 | 137 | 0.01% | 0.001% |
| 75 | 11.185 | 3144 | 3155 | 3177 | rBV | 556237 | 867392 | 64.73% | 8.796% |
| 76 | 11.400 | 3219 | 3222 | 3224 | rBV2 | 401 | 353 | 0.03% | 0.004% |

Data Path : Z:\voasrv\HPCHEM1\MSVOA_V\Data\VV011124\
 Data File : VV033580.D
 Acq On : 11 Jan 2024 12:23
 Operator : SY/MD
 Sample : 05787-02
 Misc : 5.0mL/MSVOA_V/WATER
 ALS Vial : 5 Sample Multiplier: 1

Instrument :
 MSVOA_V
 ClientSampleId :
 VHBLK001

Integration Parameters: LSCINT.P

Integrator: RTE
 Smoothing : OFF
 Sampling : 1
 Start Thrs : 0.2
 Stop Thrs : 0

Filtering: 5
 Min Area: 0 % of largest Peak
 Max Peaks: 100
 Peak Location: TOP

If leading or trailing edge < 100 prefer < Baseline drop else tangent >
 Peak separation: 5

Method : Z:\voasrv\HPCHEM1\MSVOA_V\Method\SFAMVLM011024WMA.M
 Title : VOC Analysis

| | | | | | | | | | |
|-----|--------|------|------|------|------|--------|--------|--------|--------|
| 77 | 11.426 | 3227 | 3230 | 3232 | rBV2 | 379 | 247 | 0.02% | 0.003% |
| 78 | 11.561 | 3259 | 3272 | 3301 | rBV | 584795 | 940066 | 70.16% | 9.533% |
| 79 | 11.831 | 3353 | 3356 | 3359 | rBV3 | 457 | 320 | 0.02% | 0.003% |
| 80 | 11.924 | 3381 | 3385 | 3391 | rVB4 | 603 | 643 | 0.05% | 0.007% |
| 81 | 11.950 | 3391 | 3393 | 3394 | rBV4 | 587 | 249 | 0.02% | 0.003% |
| 82 | 11.959 | 3394 | 3396 | 3400 | rVB4 | 398 | 303 | 0.02% | 0.003% |
| 83 | 12.030 | 3414 | 3418 | 3419 | rBV4 | 316 | 190 | 0.01% | 0.002% |
| 84 | 12.091 | 3434 | 3437 | 3441 | rVB2 | 629 | 404 | 0.03% | 0.004% |
| 85 | 12.114 | 3441 | 3444 | 3445 | rBV2 | 483 | 240 | 0.02% | 0.002% |
| 86 | 12.207 | 3470 | 3473 | 3475 | rBV3 | 334 | 207 | 0.02% | 0.002% |
| 87 | 12.336 | 3512 | 3513 | 3516 | rBV | 259 | 155 | 0.01% | 0.002% |
| 88 | 12.365 | 3520 | 3522 | 3526 | rBV4 | 309 | 196 | 0.01% | 0.002% |
| 89 | 12.483 | 3555 | 3559 | 3560 | rBV | 282 | 155 | 0.01% | 0.002% |
| 90 | 12.590 | 3587 | 3592 | 3594 | rBV4 | 943 | 971 | 0.07% | 0.010% |
| 91 | 12.731 | 3629 | 3636 | 3638 | rBV3 | 539 | 646 | 0.05% | 0.007% |
| 92 | 12.818 | 3659 | 3663 | 3666 | rBV2 | 212 | 163 | 0.01% | 0.002% |
| 93 | 12.853 | 3671 | 3674 | 3677 | rBV | 544 | 382 | 0.03% | 0.004% |
| 94 | 12.879 | 3680 | 3682 | 3686 | rVB4 | 465 | 260 | 0.02% | 0.003% |
| 95 | 12.901 | 3686 | 3689 | 3691 | rBV | 268 | 172 | 0.01% | 0.002% |
| 96 | 13.207 | 3779 | 3784 | 3795 | rBV5 | 2220 | 3294 | 0.25% | 0.033% |
| 97 | 13.268 | 3801 | 3803 | 3806 | rBV3 | 322 | 167 | 0.01% | 0.002% |
| 98 | 13.352 | 3822 | 3829 | 3832 | rBV5 | 645 | 763 | 0.06% | 0.008% |
| 99 | 13.451 | 3853 | 3860 | 3874 | rBV | 4876 | 8686 | 0.65% | 0.088% |
| 100 | 13.590 | 3896 | 3903 | 3905 | rBV3 | 662 | 724 | 0.05% | 0.007% |

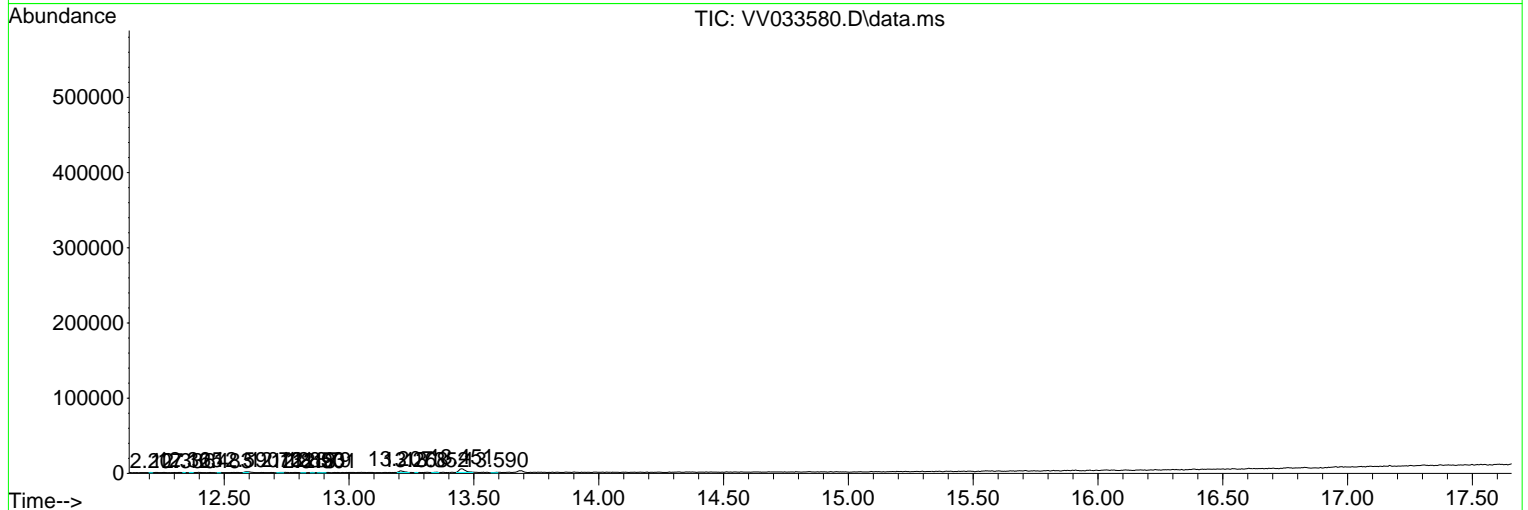
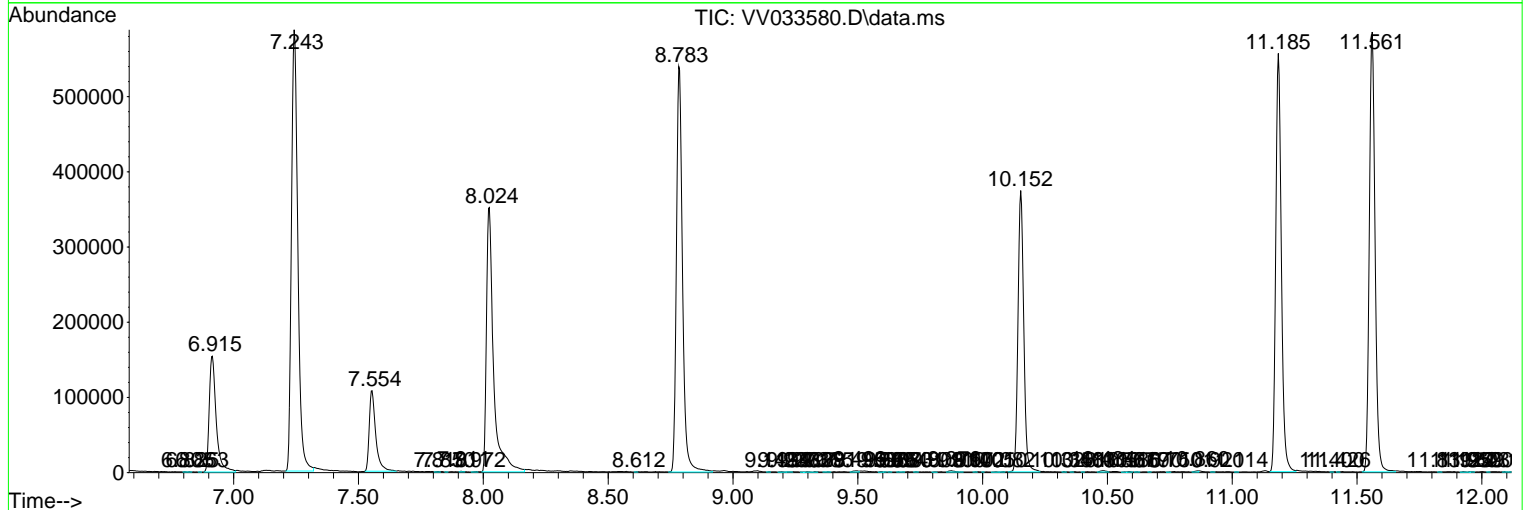
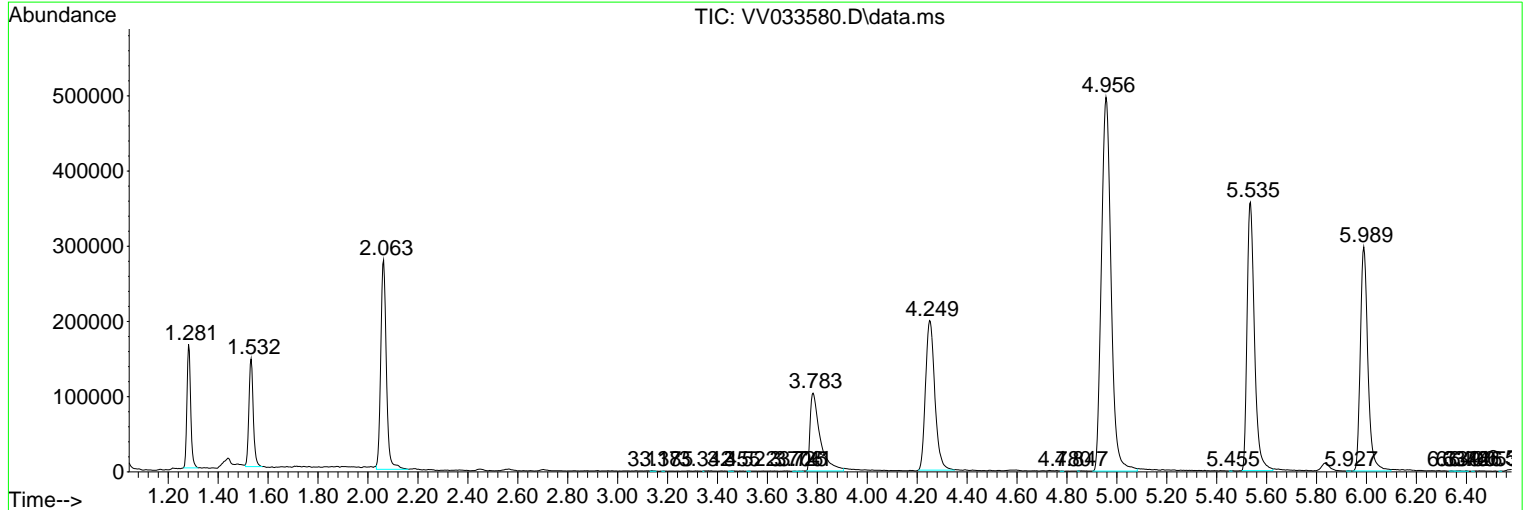
Sum of corrected areas: 9860802

Data Path : Z:\voasrv\HPCHEM1\MSVOA_V\Data\VV011124\
 Data File : VV033580.D
 Acq On : 11 Jan 2024 12:23
 Operator : SY/MD
 Sample : 05787-02
 Misc : 5.0mL/MSVOA_V/WATER
 ALS Vial : 5 Sample Multiplier: 1

Instrument :
 MSVOA_V
 ClientSampleId :
 VHBLK001

Quant Method : Z:\voasrv\HPCHEM1\MSVOA_V\Method\SFAMVLM011024WMA.M
 Quant Title : VOC Analysis

TIC Library : C:\Database\NIST20.L
 TIC Integration Parameters: LSCINT.P



Data Path : Z:\voasrv\HPCHEM1\MSVOA_V\Data\VV011124\
Data File : VV033580.D
Acq On : 11 Jan 2024 12:23
Operator : SY/MD
Sample : 05787-02
Misc : 5.0mL/MSVOA_V/WATER
ALS Vial : 5 Sample Multiplier: 1

Instrument :
MSVOA_V
ClientSampleId :
VHBLK001

Quant Method : Z:\voasrv\HPCHEM1\MSVOA_V\Method\SFAMVLM011024WMA.M
Quant Title : VOC Analysis

TIC Library : C:\Database\NIST20.L
TIC Integration Parameters: LSCINT.P

No Library Search Compounds Detected

Data Path : Z:\voasrv\HPCHEM1\MSVOA_V\Data\VV011124\
Data File : VV033580.D
Acq On : 11 Jan 2024 12:23
Operator : SY/MD
Sample : 05787-02
Misc : 5.0mL/MSVOA_V/WATER
ALS Vial : 5 Sample Multiplier: 1

Instrument :
MSVOA_V
ClientSampleId :
VHBLK001

Quant Method : Z:\voasrv\HPCHEM1\MSVOA_V\Method\SFAMVLM011024WMA.M
Quant Title : VOC Analysis

TIC Library : C:\Database\NIST0.L
TIC Integration Parameters: LSCINT.P

| TIC Top Hit name | RT | EstConc | Units | Response | --Internal Standard-- | | |
|------------------|----|---------|-------|----------|-----------------------|----|-----------|
| | | | | | # | RT | Resp Conc |
