

Data Path : Z:\voasrv\HPCHEM1\MSVOA_V\Data\VW011524\
 Data File : VW033634.D
 Acq On : 15 Jan 2024 11:51
 Operator : SY/MD
 Sample : P1121-15
 Misc : 25.0mL/MSVOA_V/WATER
 ALS Vial : 9 Sample Multiplier: 1

Instrument :
 MSVOA_V
 ClientSampleId :

Quant Time: Jan 16 03:43:45 2024
 Quant Method : Z:\voasrv\HPCHEM1\MSVOA_V\Method\SFAMVTR011224WMA.M
 Quant Title : TRACE VOA SFAM1.0
 QLast Update : Tue Jan 16 03:40:53 2024
 Response via : Initial Calibration

Compound	R.T.	QIon	Response	Conc	Units	Dev(Min)

Internal Standards						
1) 1,4-Difluorobenzene	5.535	114	122544	5.000	ug/L	0.00
28) Chlorobenzene-d5	8.786	117	114687	5.000	ug/L	0.00
58) 1,4-Dichlorobenzene-d4	11.188	152	59056	5.000	ug/L	0.00
System Monitoring Compounds						
4) Vinyl Chloride-d3	1.282	65	29050	4.335	ug/L	0.00
Spiked Amount	5.000	Range 40 - 130	Recovery	=	86.800%	
7) Chloroethane-d5	1.536	69	27598	4.644	ug/L	0.00
Spiked Amount	5.000	Range 65 - 130	Recovery	=	92.800%	
11) 1,1-Dichloroethene-d2	2.063	65	13938	4.615	ug/L	0.00
Spiked Amount	5.000	Range 60 - 125	Recovery	=	92.400%	
20) 2-Butanone-d5	3.802	46	66937	40.855	ug/L	-0.02
Spiked Amount	50.000	Range 40 - 130	Recovery	=	81.720%	
24) Chloroform-d	4.252	84	65883	4.546	ug/L	0.00
Spiked Amount	5.000	Range 70 - 125	Recovery	=	91.000%	
26) 1,2-Dichloroethane-d4	4.947	65	32288	4.969	ug/L	0.00
Spiked Amount	5.000	Range 70 - 130	Recovery	=	99.400%	
32) Benzene-d6	4.963	84	127579	4.610	ug/L	0.00
Spiked Amount	5.000	Range 70 - 125	Recovery	=	92.200%	
36) 1,2-Dichloropropane-d6	5.992	67	41772	4.528	ug/L	0.00
Spiked Amount	5.000	Range 60 - 140	Recovery	=	90.600%	
41) Toluene-d8	7.246	98	113127	4.579	ug/L	0.00
Spiked Amount	5.000	Range 70 - 130	Recovery	=	91.600%	
43) trans-1,3-Dichloroprop...	7.561	79	13502	4.233	ug/L	0.00
Spiked Amount	5.000	Range 55 - 130	Recovery	=	84.600%	
46) 2-Hexanone-d5	8.027	63	52102	41.606	ug/L	0.00
Spiked Amount	50.000	Range 45 - 130	Recovery	=	83.220%	
56) 1,1,2,2-Tetrachloroeth...	10.153	84	25041	4.645	ug/L	0.00
Spiked Amount	5.000	Range 65 - 120	Recovery	=	93.000%	
66) 1,2-Dichlorobenzene-d4	11.561	152	41748	4.604	ug/L	0.00
Spiked Amount	5.000	Range 80 - 120	Recovery	=	92.000%	

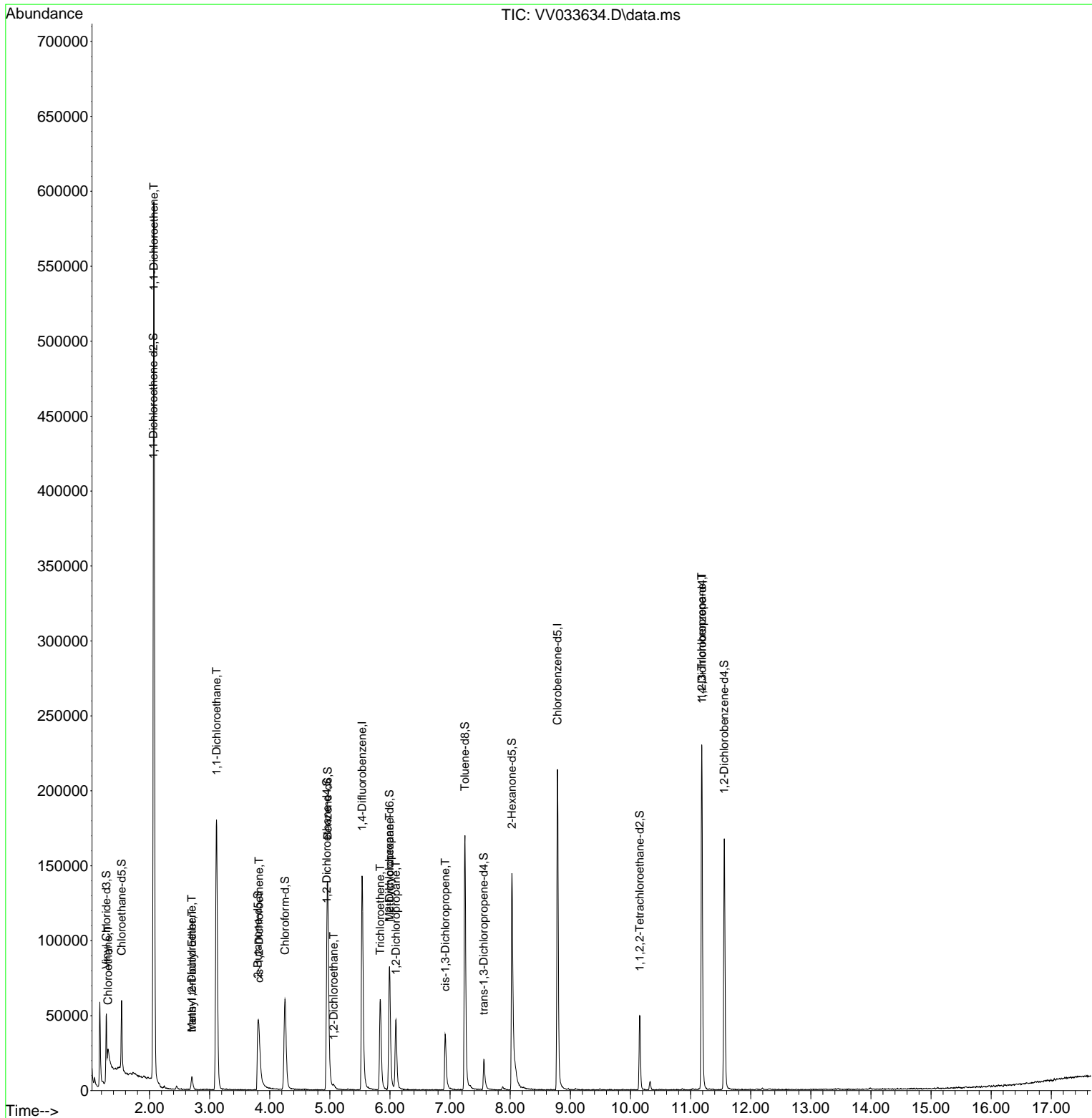
Target Compounds						Qvalue
8) Chloroethane	1.310	64	46033	5.946	ug/L #	52
12) 1,1-Dichloroethene	2.072	96	152310	17.632	ug/L #	87
17) Methyl tert-butyl Ether	2.706	73	4434	0.227	ug/L #	84
18) trans-1,2-Dichloroethene	2.703	96	1924	0.197	ug/L	81
19) 1,1-Dichloroethane	3.114	63	188136	9.704	ug/L	99
22) cis-1,2-Dichloroethene	3.822	96	11224	1.099	ug/L	96
27) 1,2-Dichloroethane	5.066	62	2378	0.234	ug/L #	76
34) Trichloroethene	5.838	95	22613	2.086	ug/L	97
35) Methylcyclohexane	5.992	83	9989	0.544	ug/L #	15
37) 1,2-Dichloropropane	6.098	63	19971	1.975	ug/L	98
39) cis-1,3-Dichloropropene	6.921	75	1057	0.073	ug/L #	49
61) 1,2,3-Trichloropropane	11.185	75	7393	1.562	ug/L #	67

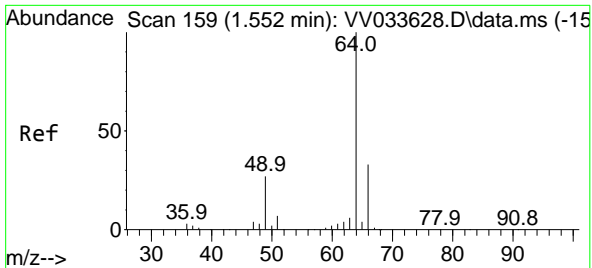
(#) = qualifier out of range (m) = manual integration (+) = signals summed

Data Path : Z:\voasrv\HPCHEM1\MSVOA_V\Data\VV011524\
 Data File : VV033634.D
 Acq On : 15 Jan 2024 11:51
 Operator : SY/MD
 Sample : P1121-15
 Misc : 25.0mL/MSVOA_V/WATER
 ALS Vial : 9 Sample Multiplier: 1

Instrument :
 MSVOA_V
 ClientSampleId :

Quant Time: Jan 16 03:43:45 2024
 Quant Method : Z:\voasrv\HPCHEM1\MSVOA_V\Method\SFAMVTR011224WMA.M
 Quant Title : TRACE VOA SFAM1.0
 QLast Update : Tue Jan 16 03:40:53 2024
 Response via : Initial Calibration

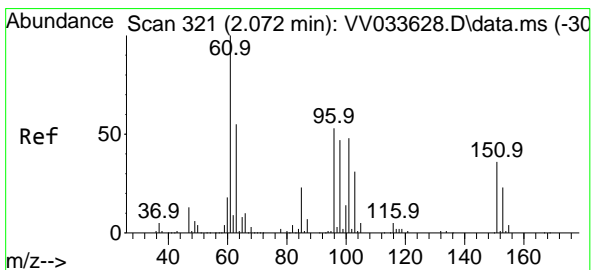
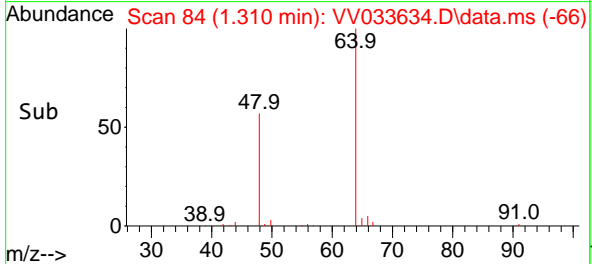
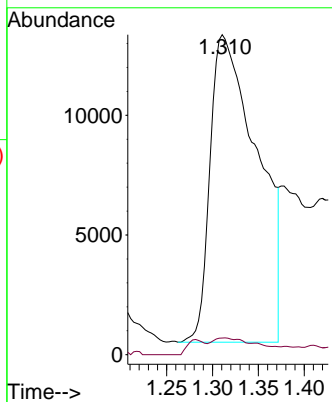
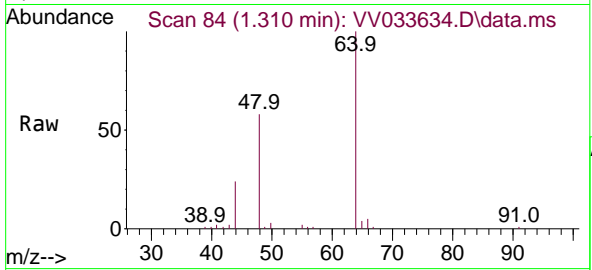




#8
 Chloroethane
 Concen: 5.946 ug/L
 RT: 1.310 min Scan# 84
 Delta R.T. -0.241 min
 Lab File: VV033634.D
 Acq: 15 Jan 2024 11:51

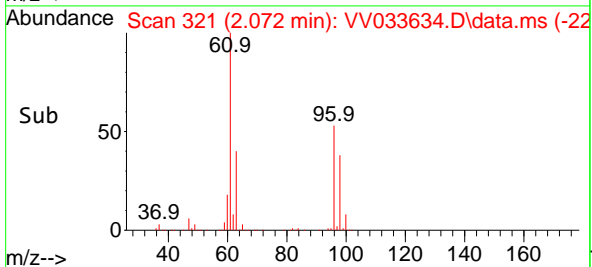
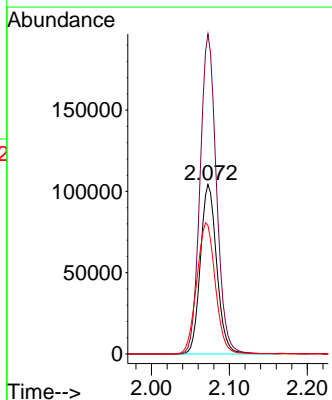
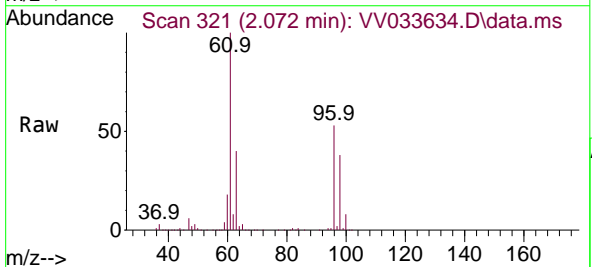
Instrument : MSVOA_V
 ClientSampleId :

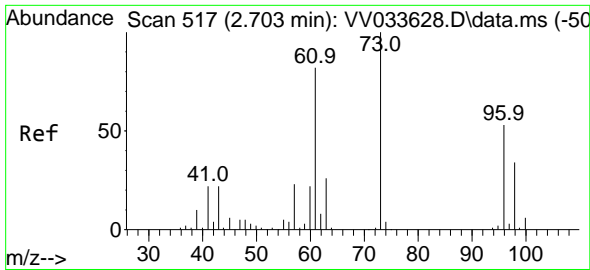
Tgt Ion: 64 Resp: 46033
 Ion Ratio Lower Upper
 64 100
 66 5.2 22.6 42.0#



#12
 1,1-Dichloroethene
 Concen: 17.632 ug/L
 RT: 2.072 min Scan# 321
 Delta R.T. 0.000 min
 Lab File: VV033634.D
 Acq: 15 Jan 2024 11:51

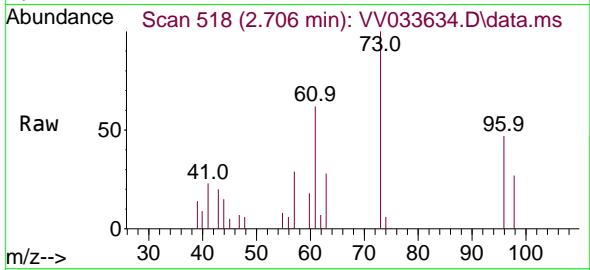
Tgt Ion: 96 Resp: 152310
 Ion Ratio Lower Upper
 96 100
 61 188.8 133.8 248.4
 63 75.8 77.2 143.4#





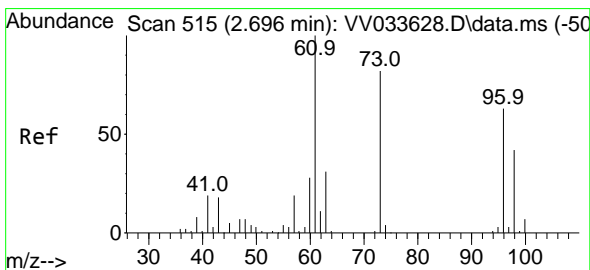
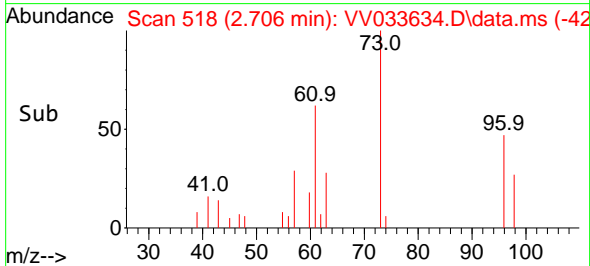
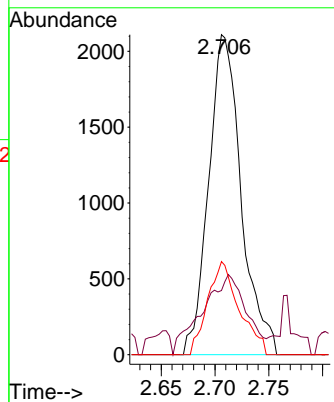
#17
 Methyl tert-butyl Ether
 Concen: 0.227 ug/L
 RT: 2.706 min Scan# 518
 Delta R.T. 0.003 min
 Lab File: VV033634.D
 Acq: 15 Jan 2024 11:51

Instrument : MSVOA_V
 ClientSampleId :



Tgt Ion: 73 Resp: 4434

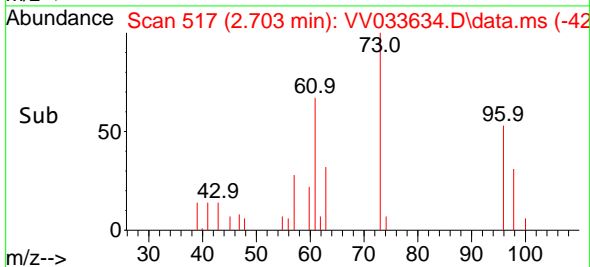
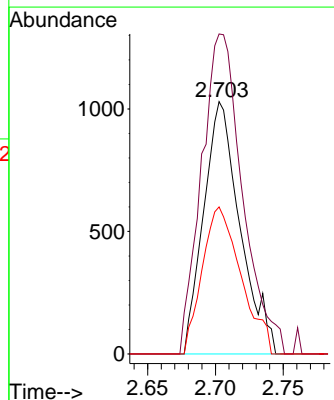
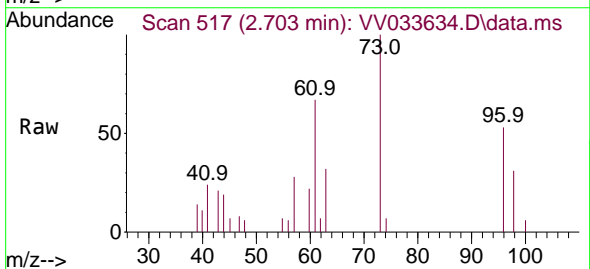
Ion	Ratio	Lower	Upper
73	100		
43	34.2	17.7	26.5#
57	28.3	19.5	29.3

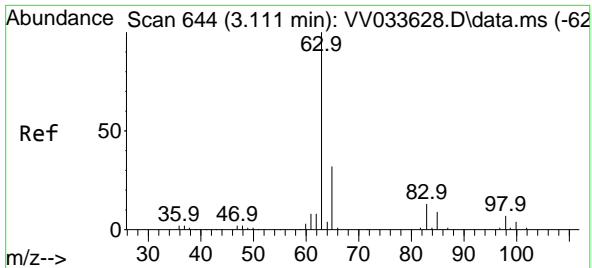


#18
 trans-1,2-Dichloroethene
 Concen: 0.197 ug/L
 RT: 2.703 min Scan# 517
 Delta R.T. 0.006 min
 Lab File: VV033634.D
 Acq: 15 Jan 2024 11:51

Tgt Ion: 96 Resp: 1924

Ion	Ratio	Lower	Upper
96	100		
61	126.8	110.4	205.0
98	58.3	44.1	81.9



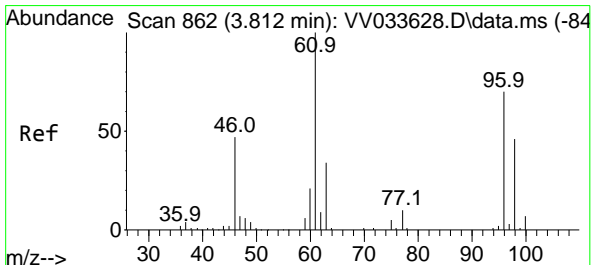
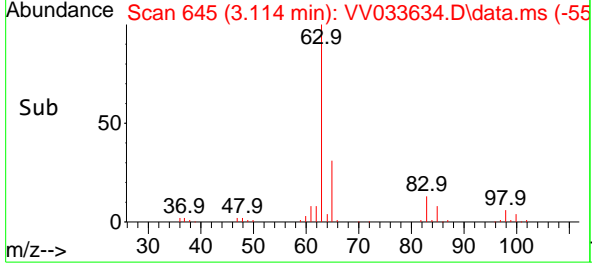
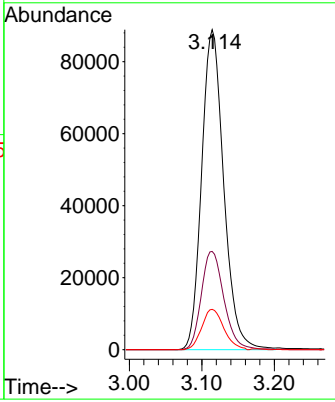
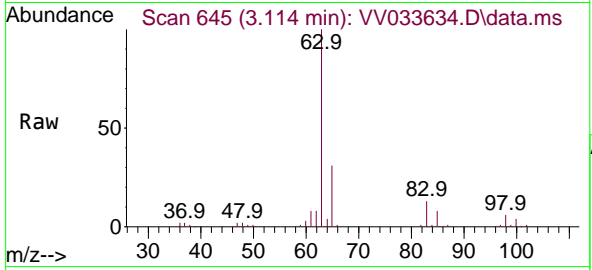


#19
 1,1-Dichloroethane
 Concen: 9.704 ug/L
 RT: 3.114 min Scan# 64
 Delta R.T. 0.003 min
 Lab File: VV033634.D
 Acq: 15 Jan 2024 11:51

Instrument : MSVOA_V
 ClientSampleId :

Tgt Ion: 63 Resp: 188136

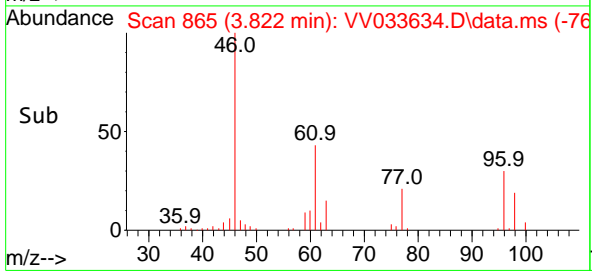
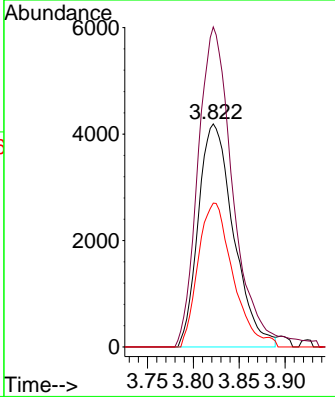
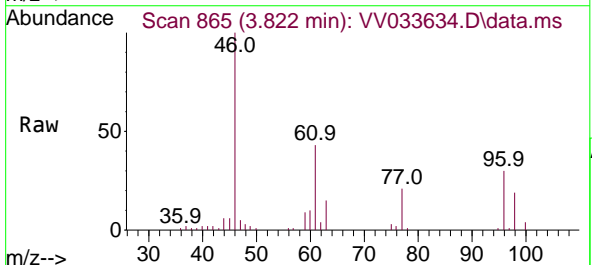
Ion	Ratio	Lower	Upper
63	100		
65	30.7	21.6	40.2
83	12.6	9.1	16.9

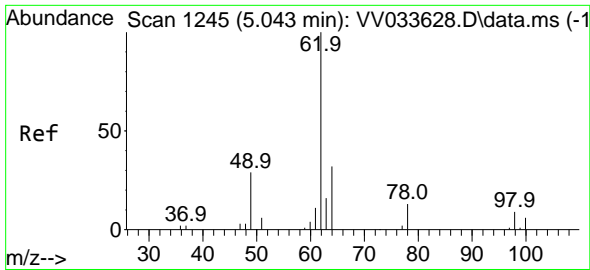


#22
 cis-1,2-Dichloroethene
 Concen: 1.099 ug/L
 RT: 3.822 min Scan# 865
 Delta R.T. 0.010 min
 Lab File: VV033634.D
 Acq: 15 Jan 2024 11:51

Tgt Ion: 96 Resp: 11224

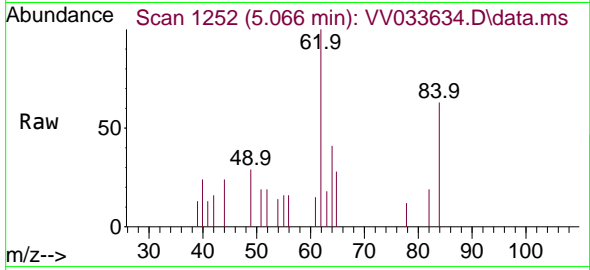
Ion	Ratio	Lower	Upper
96	100		
61	143.4	97.1	180.3
98	64.5	42.6	79.0



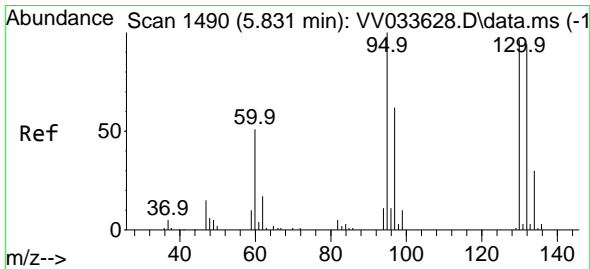
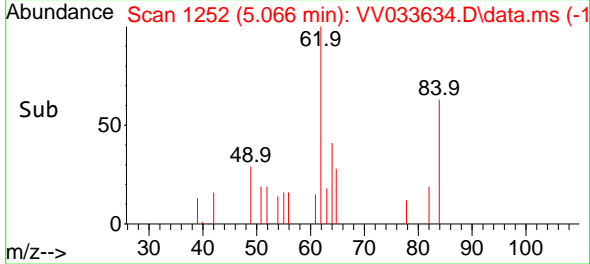
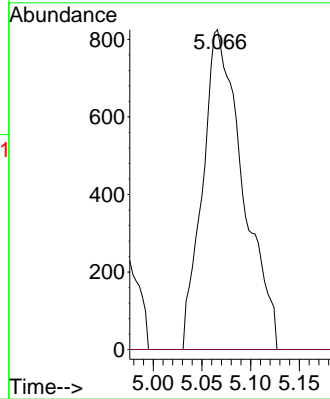


#27
 1,2-Dichloroethane
 Concen: 0.234 ug/L
 RT: 5.066 min Scan# 11
 Delta R.T. 0.023 min
 Lab File: VV033634.D
 Acq: 15 Jan 2024 11:51

Instrument :
 MSVOA_V
 ClientSampleId :

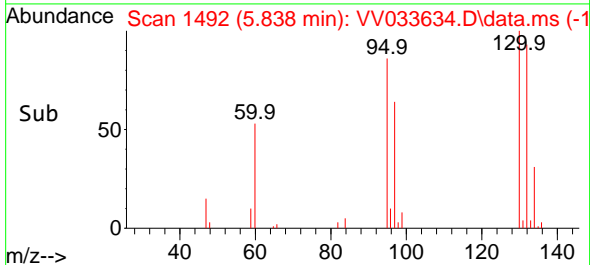
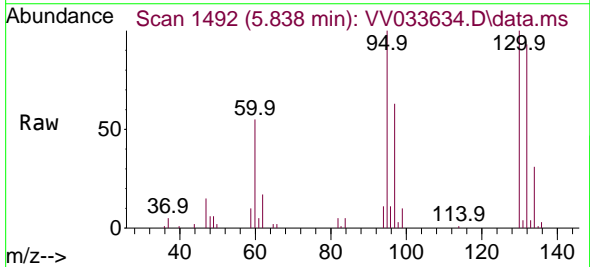
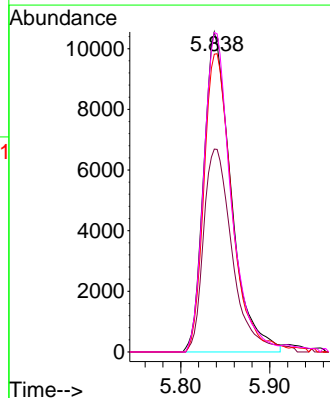


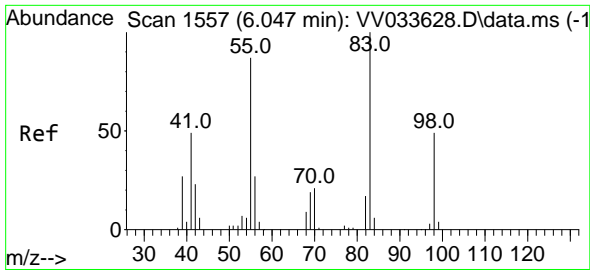
Tgt Ion: 62 Resp: 2378
 Ion Ratio Lower Upper
 62 100
 98 0.0 7.0 10.6#



#34
 Trichloroethene
 Concen: 2.086 ug/L
 RT: 5.838 min Scan# 1492
 Delta R.T. 0.006 min
 Lab File: VV033634.D
 Acq: 15 Jan 2024 11:51

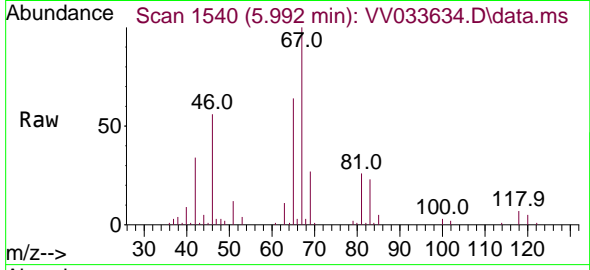
Tgt Ion: 95 Resp: 22613
 Ion Ratio Lower Upper
 95 100
 97 63.4 45.1 83.9
 132 93.1 65.2 121.2
 130 99.8 66.0 122.6



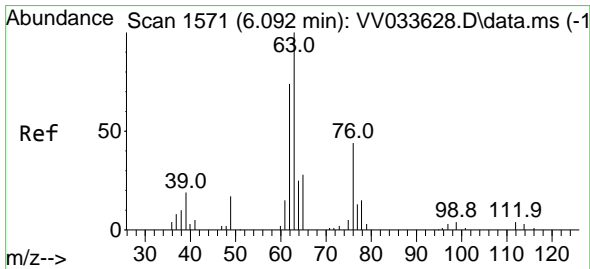
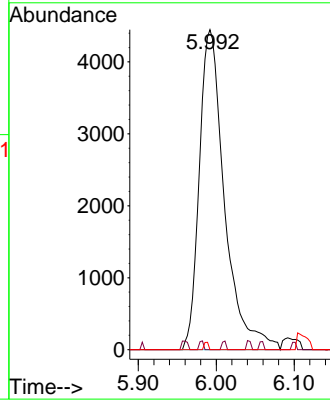
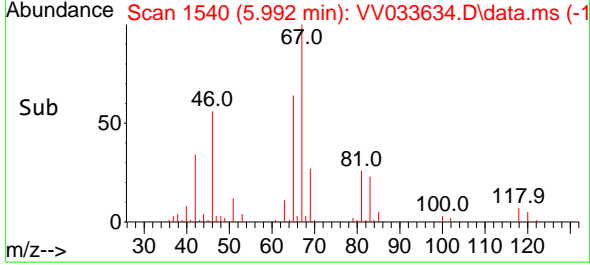


#35
 Methylcyclohexane
 Concen: 0.544 ug/L
 RT: 5.992 min Scan# 1540
 Delta R.T. -0.055 min
 Lab File: VV033634.D
 Acq: 15 Jan 2024 11:51

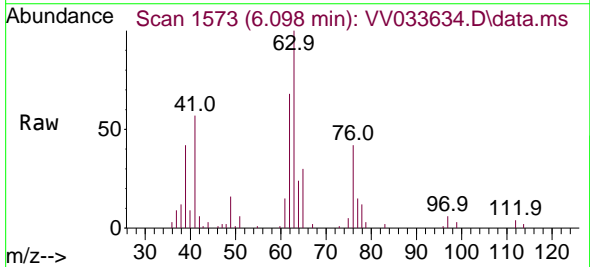
Instrument : MSVOA_V
 ClientSampleId :



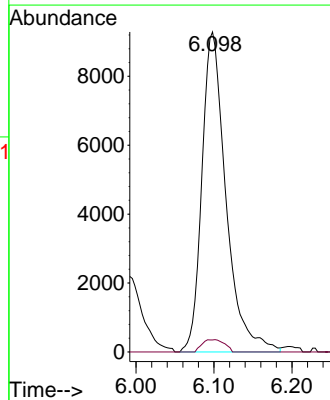
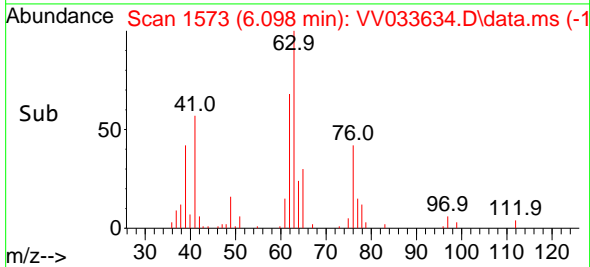
Tgt Ion: 83 Resp: 9989
 Ion Ratio Lower Upper
 83 100
 55 0.5 68.7 103.1#
 98 0.4 38.3 57.5#

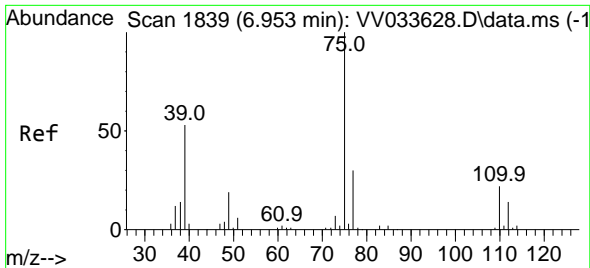


#37
 1,2-Dichloropropane
 Concen: 1.975 ug/L
 RT: 6.098 min Scan# 1573
 Delta R.T. 0.006 min
 Lab File: VV033634.D
 Acq: 15 Jan 2024 11:51



Tgt Ion: 63 Resp: 19971
 Ion Ratio Lower Upper
 63 100
 112 3.6 3.4 5.2

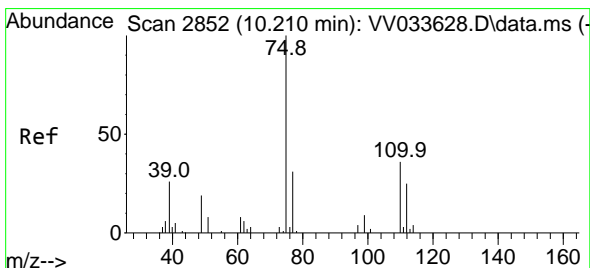
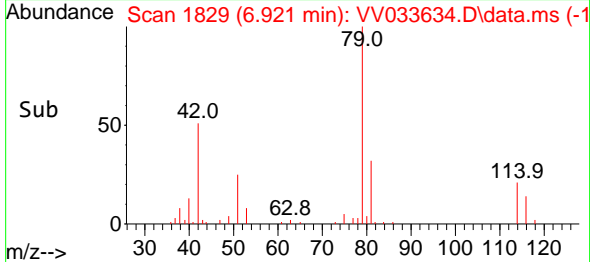
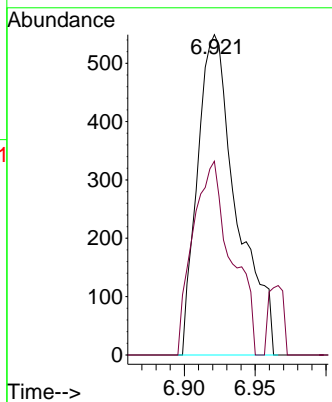
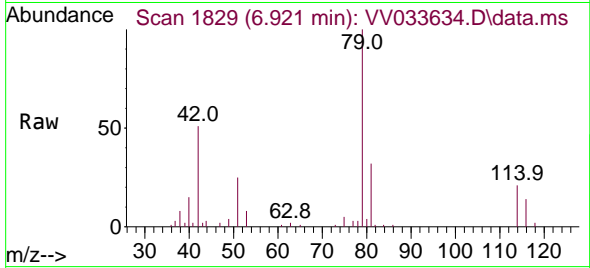




#39
 cis-1,3-Dichloropropene
 Concen: 0.073 ug/L
 RT: 6.921 min Scan# 1111
 Delta R.T. -0.032 min
 Lab File: VV033634.D
 Acq: 15 Jan 2024 11:51

Instrument : MSVOA_V
 ClientSampleId :

Tgt Ion: 75 Resp: 1057
 Ion Ratio Lower Upper
 75 100
 77 60.5 22.5 41.7#



#61
 1,2,3-Trichloropropane
 Concen: 1.562 ug/L
 RT: 11.185 min Scan# 3155
 Delta R.T. 0.974 min
 Lab File: VV033634.D
 Acq: 15 Jan 2024 11:51

Tgt Ion: 75 Resp: 7393
 Ion Ratio Lower Upper
 75 100
 77 35.8 24.7 37.1
 110 3.0 28.0 42.0#

