

Data Path : Z:\VOASRV\HPCHEM1\MSVOA V\DATA\VV011720\
 Data File : VV014342.D
 Acq On : 17 Jan 2020 17:36
 Operator : SY/MD
 Sample : L1169-12
 Misc : 25.0mL/MSVOA V/WATER
 ALS Vial : 21 Sample Multiplier: 1

Instrument :
 MSVOA_V
 ClientSampleId :
 BF774

Integration Parameters: rteint.p
 Integrator: RTE
 Smoothing : ON Filtering: 5
 Sampling : 1 Min Area: 3 % of largest Peak
 Start Thrs: 0.1 Max Peaks: 100
 Stop Thrs : 0 Peak Location: TOP

If leading or trailing edge < 100 prefer < Baseline drop else tangent >
 Peak separation: 5

Method : Z:\VOASRV\HPCHEM1\MSVOA_V\METHOD\SOMVTR010220WMA.M
 Title : TRACE VOA SOM01.0

Signal : TIC

peak #	R.T. min	first scan	max scan	last scan	PK TY	peak height	corr. area	corr. % max.	% of total
1	1.322	64	72	83	rVB	432483	433659	2.65%	1.084%
2	1.586	146	154	170	rVB	312978	369138	2.25%	0.923%
3	2.132	315	324	335	rBV	538216	761024	4.65%	1.903%
4	2.296	361	375	421	rBV	9047634	16373404	100.00%	40.936%
5	3.923	870	881	911	rBV	402514	1071846	6.55%	2.680%
6	4.399	1013	1029	1052	rBV	478350	1195352	7.30%	2.989%
7	5.097	1228	1246	1272	rBV2	1157519	2859103	17.46%	7.148%
8	5.663	1410	1422	1449	rBV	924354	1850530	11.30%	4.627%
9	6.116	1548	1563	1584	rBV	663986	1357003	8.29%	3.393%
10	7.029	1834	1847	1865	rBV	360807	657439	4.02%	1.644%
11	7.357	1936	1949	1964	rBV	1433798	2442787	14.92%	6.107%
12	7.662	2034	2044	2061	rBV	222122	384474	2.35%	0.961%
13	8.129	2176	2189	2231	rBV	1403553	3122397	19.07%	7.806%
14	8.891	2412	2426	2442	rBV	1354922	2203210	13.46%	5.508%
15	10.254	2838	2850	2862	rBV	473906	762432	4.66%	1.906%
16	11.289	3160	3172	3190	rBV	1357078	2141387	13.08%	5.354%
17	11.666	3275	3289	3306	rBV	1279838	2012343	12.29%	5.031%

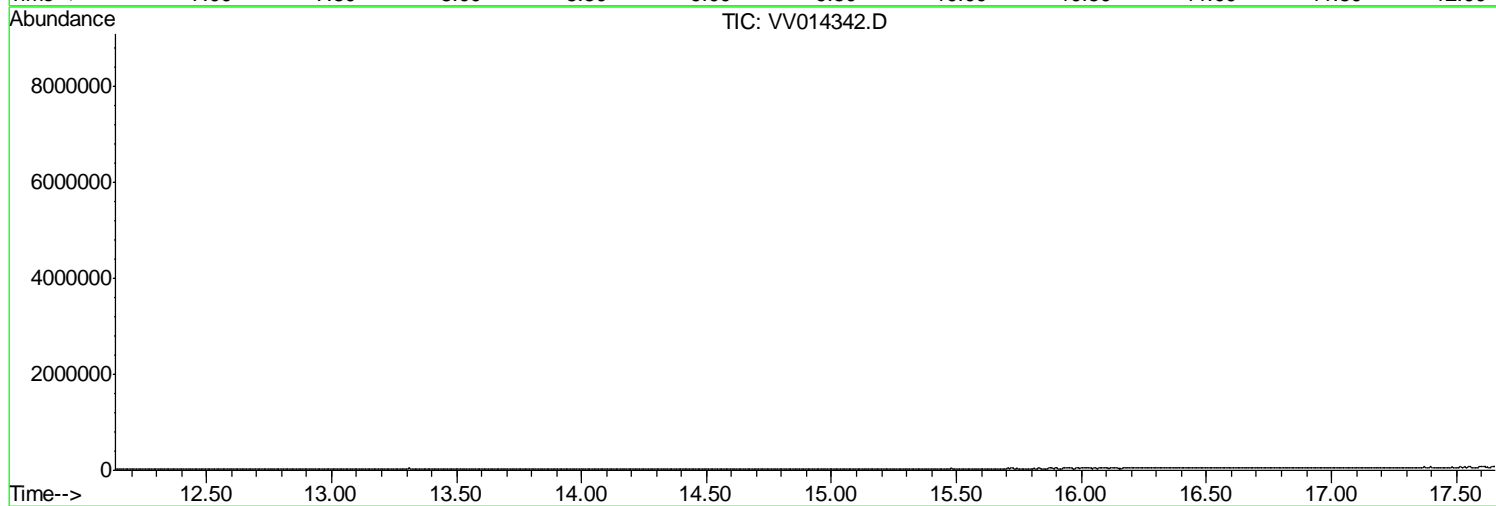
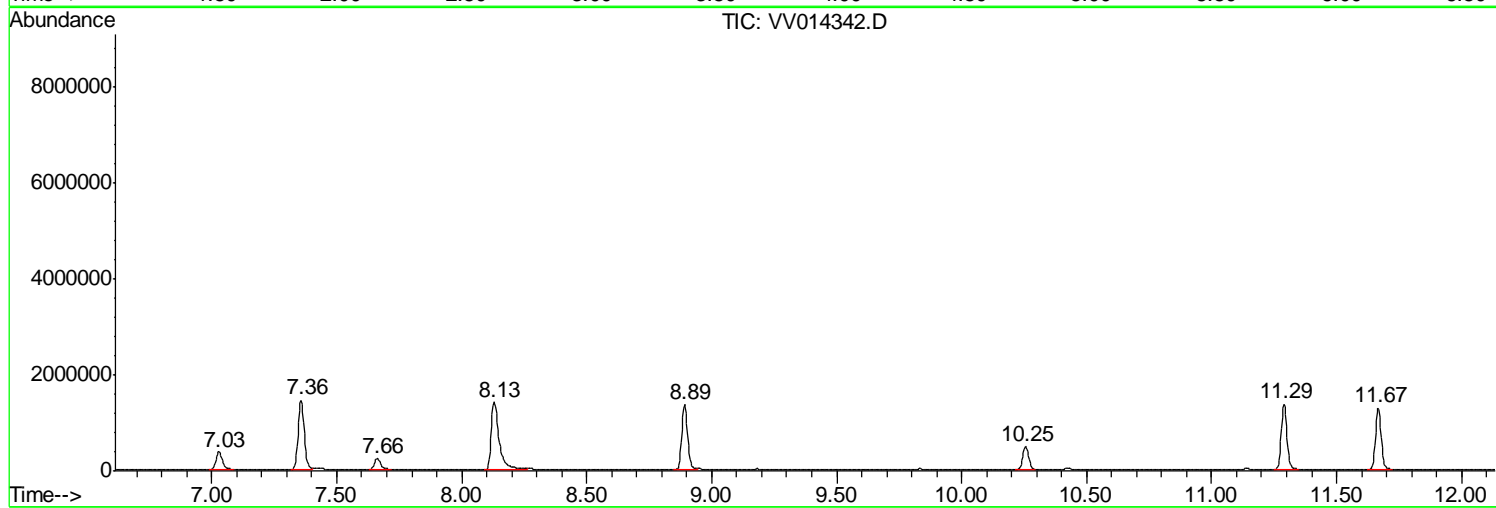
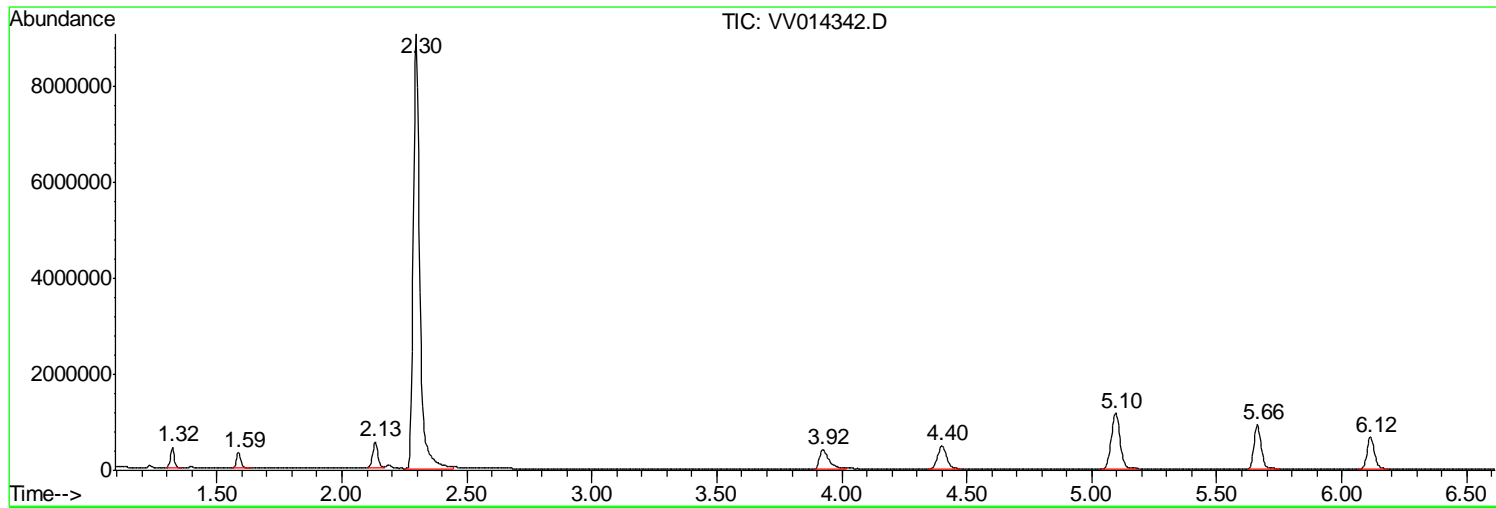
Sum of corrected areas: 39997528

Data Path : Z:\VOASRV\HPCHEM1\MSVOA V\DATA\VV011720\
Data File : VV014342.D
Acq On : 17 Jan 2020 17:36
Operator : SY/MD
Sample : L1169-12
Misc : 25.0mL/MSVOA V/WATER
ALS Vial : 21 Sample Multiplier: 1

Instrument :
MSVOA_V
ClientSampleId :
BF774

Quant Method : Z:\VOASRV\HPCHEM1\MSVOA_V\METHOD\SOMVTR010220WMA.M
Quant Title : TRACE VOA SOM01.0

TIC Library : C:\DATABASE\NIST11.L
TIC Integration Parameters: LSCINT.P



Data Path : Z:\VOASRV\HPCHEM1\MSVOA V\DATA\VV011720\
 Data File : VV014342.D
 Acq On : 17 Jan 2020 17:36
 Operator : SY/MD
 Sample : L1169-12
 Misc : 25.0mL/MSVOA V/WATER
 ALS Vial : 21 Sample Multiplier: 1

Instrument :
 MSVOA_V
 ClientSampleID :
 BF774

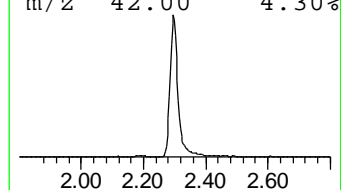
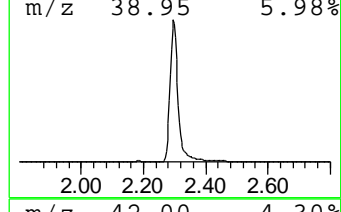
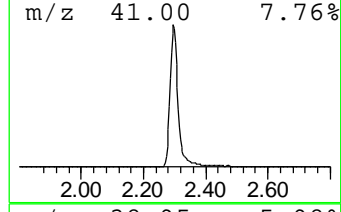
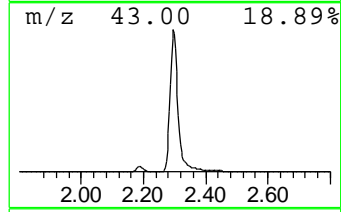
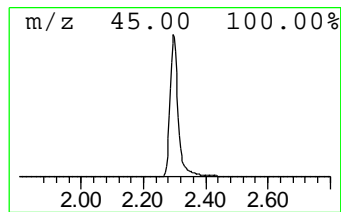
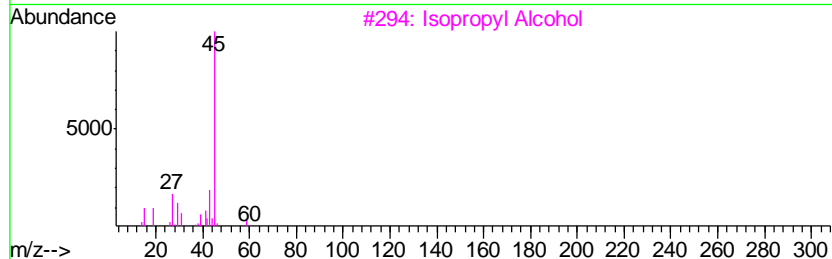
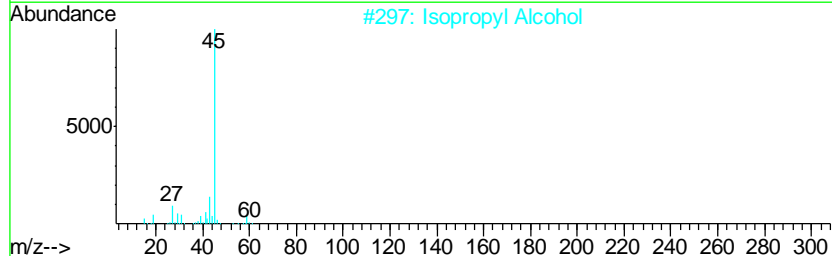
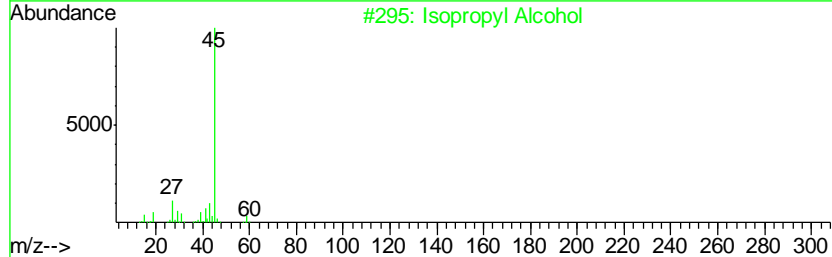
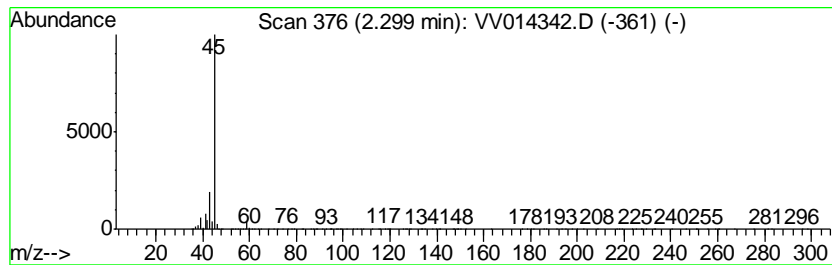
Quant Method : Z:\VOASRV\HPCHEM1\MSVOA_V\METHOD\SOMVTR010220WMA.M
 Quant Title : TRACE VOA SOM01.0

TIC Library : C:\DATABASE\NIST11.L
 TIC Integration Parameters: LSCINT.P

 Peak Number 1 Isopropyl Alcohol Concentration Rank 1

R.T.	EstConc	Area	Relative to ISTD	R.T.
2.30	44.24 ug/L	16373400	1,4-Difluorobenzene	5.66

Hit#	of	Tentative ID	MW	MolForm	CAS#	Qual
1	5	Isopropyl Alcohol	60	C3H8O	000067-63-0	86
2		Isopropyl Alcohol	60	C3H8O	000067-63-0	86
3		Isopropyl Alcohol	60	C3H8O	000067-63-0	78
4		Isopropyl Alcohol	60	C3H8O	000067-63-0	56
5		Hydrazine, ethyl-	60	C2H8N2	000624-80-6	9



Data Path : Z:\VOASRV\HPCHEM1\MSVOA_V\DATA\VV011720\
Data File : VV014342.D
Acq On : 17 Jan 2020 17:36
Operator : SY/MD
Sample : L1169-12
Misc : 25.0mL/MSVOA_V/WATER
ALS Vial : 21 Sample Multiplier: 1

Instrument :
MSVOA_V
ClientSampleId :
BF774

Quant Method : Z:\VOASRV\HPCHEM1\MSVOA_V\METHOD\SOMVTR010220WMA.M
Quant Title : TRACE VOA SOM01.0

TIC Library : C:\DATABASE\NIST11.L
TIC Integration Parameters: LSCINT.P

TIC Top Hit name	RT	EstConc	Units	Response	--Internal Standard--			
					#	RT	Resp	Conc
Isopropyl Alcohol	2.30	44.2	ug/L	16373400	1	5.66	1850530	5.0