

Data Path : Z:\voasrv\HPCHEM1\MSVOA\_V\Data\VV011821\  
 Data File : VV020043.D  
 Acq On : 18 Jan 2021 14:45  
 Operator : SY/MD  
 Sample : M1147-16 100X  
 Misc : 5.0mL/MSVOA\_V/WATER  
 ALS Vial : 1 Sample Multiplier: 1

Instrument :  
 MSVOA\_V  
 ClientSampleId :  
 BG4Z6

Integration Parameters: LSCINT.P

Integrator: RTE  
 Smoothing : OFF Filtering: 5  
 Sampling : 1 Min Area: 0 % of largest Peak  
 Start Thrs: 0.2 Max Peaks: 100  
 Stop Thrs : 0 Peak Location: TOP

If leading or trailing edge < 100 prefer < Baseline drop else tangent >  
 Peak separation: 5

Method : Z:\voasrv\HPCHEM1\MSVOA\_V\Method\SOMVLM011121WMA.M  
 Title : VOC Analysis

Signal : TIC: VV020043.D\data.ms

peak #	R.T. min	first scan	max scan	last scan	PK TY	peak height	corr. area	corr. % max.	% of total
1	1.306	61	67	83	rVB	203303	212186	12.02%	1.523%
2	1.569	142	149	161	rVB	189659	213502	12.10%	1.532%
3	2.110	307	317	348	rVB	367790	565986	32.07%	4.061%
4	2.280	368	370	371	rBV2	811	358	0.02%	0.003%
5	2.386	399	403	405	rBV2	554	356	0.02%	0.003%
6	2.399	405	407	409	rBV3	629	287	0.02%	0.002%
7	2.515	434	443	451	rBV10	3184	6823	0.39%	0.049%
8	2.695	497	499	502	rVB	920	483	0.03%	0.003%
9	2.714	502	505	509	rBV2	761	556	0.03%	0.004%
10	2.733	509	511	512	rBV	620	296	0.02%	0.002%
11	2.766	512	521	530	rVB7	2509	4617	0.26%	0.033%
12	2.862	547	551	554	rBV6	714	645	0.04%	0.005%
13	3.045	600	608	617	rBV8	3106	6048	0.34%	0.043%
14	3.167	643	646	648	rVB2	570	301	0.02%	0.002%
15	3.193	648	654	655	rBV5	560	535	0.03%	0.004%
16	3.225	662	664	667	rVB4	612	335	0.02%	0.002%
17	3.274	677	679	681	rBV3	626	263	0.01%	0.002%
18	3.299	685	687	689	rVB2	551	232	0.01%	0.002%
19	3.319	689	693	695	rBV2	426	389	0.02%	0.003%
20	3.376	706	711	714	rBV3	634	586	0.03%	0.004%
21	3.393	714	716	719	rVV2	406	260	0.01%	0.002%
22	3.409	719	721	727	rVB4	622	532	0.03%	0.004%
23	3.450	730	734	737	rVB4	671	477	0.03%	0.003%
24	3.518	753	755	757	rVB3	661	248	0.01%	0.002%
25	3.602	779	781	782	rBV	567	240	0.01%	0.002%
26	3.630	788	790	793	rBV3	495	323	0.02%	0.002%
27	3.730	818	821	822	rBV3	491	277	0.02%	0.002%
28	3.849	855	858	862	rVB4	450	320	0.02%	0.002%
29	3.901	862	874	907	rBV	111756	373403	21.16%	2.679%
30	4.354	999	1015	1047	rBV	265887	645165	36.56%	4.630%
31	4.643	1101	1105	1107	rBV4	558	498	0.03%	0.004%
32	4.669	1107	1113	1114	rBV4	3294	3101	0.18%	0.022%
33	4.836	1160	1165	1166	rBV2	669	522	0.03%	0.004%
34	5.052	1214	1232	1260	rBV2	659841	1764781	100.00%	12.664%
35	5.370	1329	1331	1332	rBV2	572	263	0.01%	0.002%
36	5.412	1339	1344	1347	rBV6	1044	972	0.06%	0.007%

Data Path : Z:\voasrv\HPCHEM1\MSVOA\_V\Data\VW011821\  
 Data File : VW020043.D  
 Acq On : 18 Jan 2021 14:45  
 Operator : SY/MD  
 Sample : M1147-16 100X  
 Misc : 5.0mL/MSVOA\_V/WATER  
 ALS Vial : 1 Sample Multiplier: 1

Instrument :  
 MSVOA\_V  
 ClientSampled :  
 BG4Z6

Integration Parameters: LSCINT.P  
 Integrator: RTE  
 Smoothing : OFF  
 Sampling : 1  
 Start Thrs: 0.2  
 Stop Thrs : 0  
 Filtering: 5  
 Min Area: 0 % of largest Peak  
 Max Peaks: 100  
 Peak Location: TOP

If leading or trailing edge < 100 prefer < Baseline drop else tangent >  
 Peak separation: 5

Method : Z:\voasrv\HPCHEM1\MSVOA\_V\Method\SOMVLM011121WMA.M  
 Title : VOC Analysis

37	5.502	1358	1372	1383	rBV6	4374	10410	0.59%	0.075%
38	5.547	1383	1386	1388	rVV3	719	367	0.02%	0.003%
39	5.621	1396	1409	1434	rBV	467215	938125	53.16%	6.732%
40	5.852	1479	1481	1485	rVB4	1009	467	0.03%	0.003%
41	5.910	1492	1499	1512	rVB2	26418	50411	2.86%	0.362%
42	6.019	1531	1533	1535	rBV2	538	260	0.01%	0.002%
43	6.074	1537	1550	1576	rVV	351914	720062	40.80%	5.167%
44	6.441	1662	1664	1666	rBV	422	273	0.02%	0.002%
45	6.463	1666	1671	1678	rVV7	1388	1985	0.11%	0.014%
46	6.508	1683	1685	1687	rVV2	593	258	0.01%	0.002%
47	6.537	1690	1694	1695	rBV3	654	382	0.02%	0.003%
48	6.563	1699	1702	1703	rBV	817	370	0.02%	0.003%
49	6.708	1745	1747	1753	rVB3	1046	738	0.04%	0.005%
50	6.749	1753	1760	1761	rBV7	1491	1510	0.09%	0.011%
51	6.923	1806	1814	1818	rBV7	1921	2763	0.16%	0.020%
52	6.990	1825	1835	1857	rBV	186730	327050	18.53%	2.347%
53	7.322	1926	1938	1964	rBV	796966	1362288	77.19%	9.775%
54	7.627	2024	2033	2064	rVB	150079	272283	15.43%	1.954%
55	7.904	2114	2119	2121	rBV4	922	642	0.04%	0.005%
56	7.974	2139	2141	2143	rBV	678	437	0.02%	0.003%
57	8.023	2151	2156	2157	rBV2	505	470	0.03%	0.003%
58	8.093	2167	2178	2214	rBV2	476205	960777	54.44%	6.894%
59	8.476	2294	2297	2298	rBV	664	344	0.02%	0.002%
60	8.489	2298	2301	2303	rBV4	798	548	0.03%	0.004%
61	8.605	2332	2337	2338	rBV2	891	640	0.04%	0.005%
62	8.662	2352	2355	2357	rBV3	948	760	0.04%	0.005%
63	8.859	2403	2416	2438	rBV	865823	1400632	79.37%	10.051%
64	9.412	2584	2588	2591	rBV3	526	556	0.03%	0.004%
65	9.556	2630	2633	2635	rBV3	571	375	0.02%	0.003%
66	9.637	2655	2658	2660	rBV3	580	310	0.02%	0.002%
67	9.804	2707	2710	2712	rBV3	1066	585	0.03%	0.004%
68	9.862	2724	2728	2729	rBV2	442	270	0.02%	0.002%
69	9.920	2744	2746	2748	rBV	629	374	0.02%	0.003%
70	9.968	2758	2761	2764	rBV4	606	369	0.02%	0.003%
71	10.029	2776	2780	2784	rVB3	575	616	0.03%	0.004%
72	10.064	2784	2791	2794	rBV3	522	655	0.04%	0.005%
73	10.158	2818	2820	2822	rVB2	649	234	0.01%	0.002%
74	10.222	2828	2840	2859	rBV	537215	837070	47.43%	6.007%
75	10.431	2903	2905	2908	rBV4	458	245	0.01%	0.002%
76	10.524	2931	2934	2936	rBV2	497	229	0.01%	0.002%

Data Path : Z:\voasrv\HPCHEM1\MSVOA\_V\Data\VV011821\  
 Data File : VV020043.D  
 Acq On : 18 Jan 2021 14:45  
 Operator : SY/MD  
 Sample : M1147-16 100X  
 Misc : 5.0mL/MSVOA\_V/WATER  
 ALS Vial : 1 Sample Multiplier: 1

Instrument :  
 MSVOA\_V  
 ClientSampleId :  
 BG4Z6

Integration Parameters: LSCINT.P  
 Integrator: RTE  
 Smoothing : OFF Filtering: 5  
 Sampling : 1 Min Area: 0 % of largest Peak  
 Start Thrs: 0.2 Max Peaks: 100  
 Stop Thrs : 0 Peak Location: TOP

If leading or trailing edge < 100 prefer < Baseline drop else tangent >  
 Peak separation: 5

Method : Z:\voasrv\HPCHEM1\MSVOA\_V\Method\SOMVLM011121WMA.M  
 Title : VOC Analysis

77	10.740	2998	3001	3008	rBV3	467	560	0.03%	0.004%
78	10.865	3036	3040	3042	rBV2	400	268	0.02%	0.002%
79	10.923	3054	3058	3059	rBV	475	325	0.02%	0.002%
80	11.064	3094	3102	3105	rBV3	2555	2832	0.16%	0.020%
81	11.174	3134	3136	3138	rBV	659	426	0.02%	0.003%
82	11.196	3139	3143	3150	rVV4	4572	6489	0.37%	0.047%
83	11.257	3151	3162	3184	rVB	941538	1448305	82.07%	10.393%
84	11.559	3245	3256	3258	rBV3	19615	28817	1.63%	0.207%
85	11.633	3269	3279	3299	rVB	925653	1502509	85.14%	10.782%
86	11.826	3329	3339	3351	rVB2	15818	27424	1.55%	0.197%
87	11.920	3358	3368	3372	rBV3	18198	27017	1.53%	0.194%
88	12.026	3392	3401	3420	rVB	33573	55213	3.13%	0.396%
89	12.321	3484	3493	3503	rVB7	4195	6853	0.39%	0.049%
90	12.424	3517	3525	3532	rBV	16255	23601	1.34%	0.169%
91	12.473	3533	3540	3554	rVB	30272	46698	2.65%	0.335%
92	12.804	3637	3643	3650	rBV6	2961	3871	0.22%	0.028%
93	12.855	3653	3659	3660	rBV3	5185	4577	0.26%	0.033%
94	13.010	3702	3707	3718	rVB5	3510	5236	0.30%	0.038%
95	13.177	3753	3759	3767	rBV9	5107	6772	0.38%	0.049%
96	13.280	3783	3791	3797	rBV4	15627	23941	1.36%	0.172%
97	13.701	3919	3922	3923	rBV2	1221	713	0.04%	0.005%
98	13.919	3984	3990	4000	rVB3	6028	8360	0.47%	0.060%
99	14.669	4217	4223	4227	rBV5	793	1063	0.06%	0.008%
100	15.379	4442	4444	4445	rBV	1278	600	0.03%	0.004%

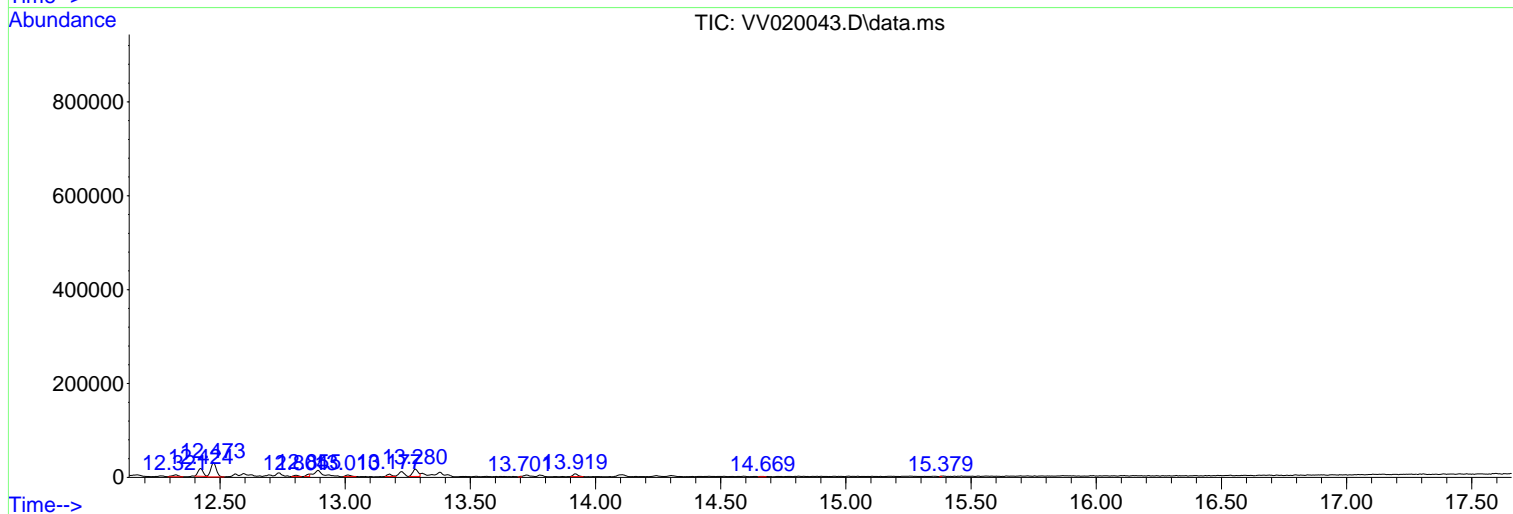
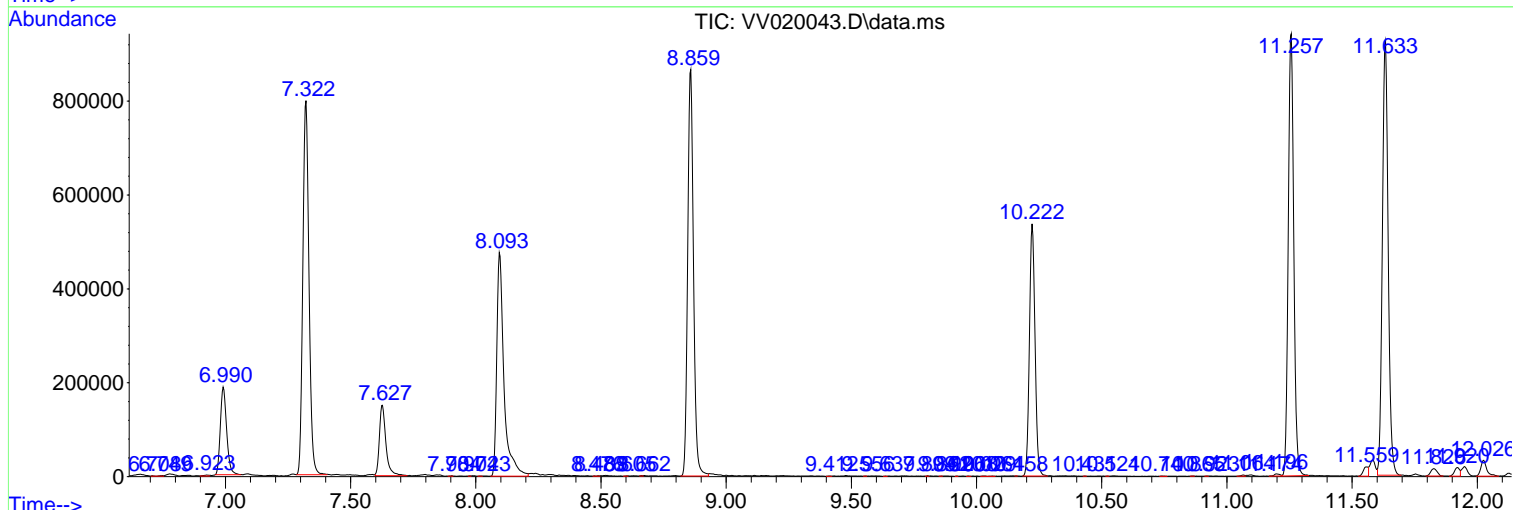
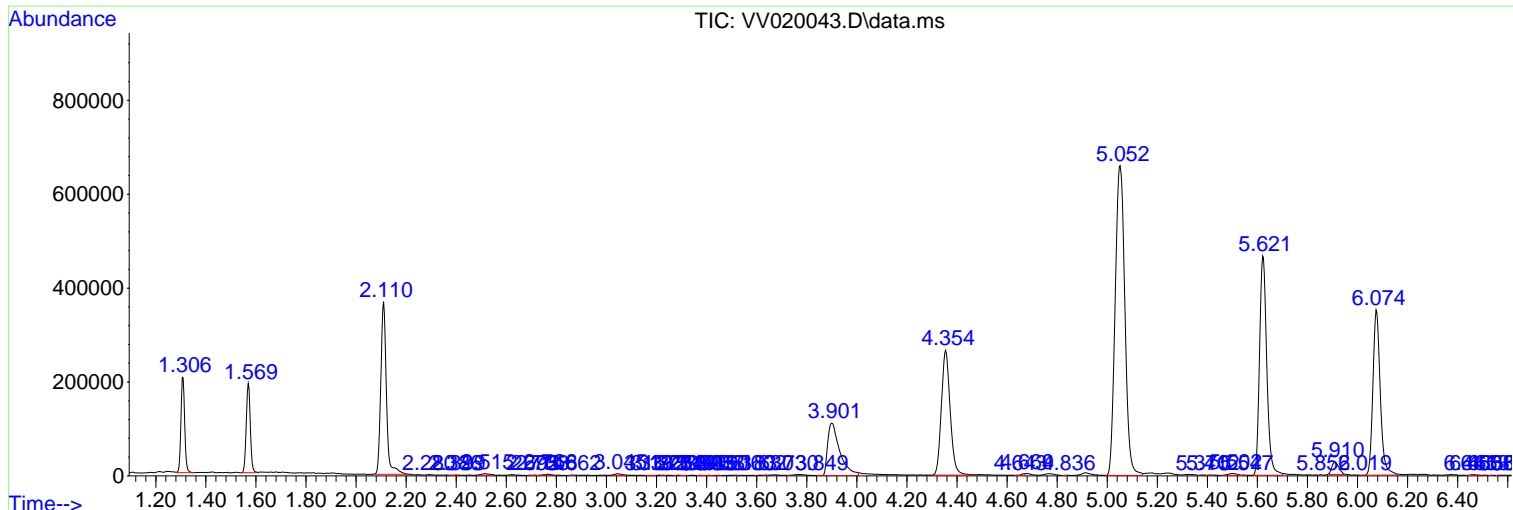
Sum of corrected areas: 13935776

Data Path : Z:\voasrv\HPCHEM1\MSVOA\_V\Data\VV011821\  
 Data File : VV020043.D  
 Acq On : 18 Jan 2021 14:45  
 Operator : SY/MD  
 Sample : M1147-16 100X  
 Misc : 5.0mL/MSVOA\_V/WATER  
 ALS Vial : 1 Sample Multiplier: 1

Instrument :  
 MSVOA\_V  
 Client Sampled :  
 BG4Z6

Quant Method : Z:\voasrv\HPCHEM1\MSVOA\_V\Method\SOMVLM011121WMA.M  
 Quant Title : VOC Analysis

TIC Library : C:\DATABASE\NIST11.L  
 TIC Integration Parameters: LSCINT.P



Data Path : Z:\voasrv\HPCHEM1\MSVOA\_V\Data\VV011821\  
Data File : VV020043.D  
Acq On : 18 Jan 2021 14:45  
Operator : SY/MD  
Sample : M1147-16 100X  
Misc : 5.0mL/MSVOA\_V/WATER  
ALS Vial : 1 Sample Multiplier: 1

**Instrument :**  
MSVOA\_V  
**ClientSampleId :**  
BG4Z6

Quant Method : Z:\voasrv\HPCHEM1\MSVOA\_V\Method\SOMVLM011121WMA.M  
Quant Title : VOC Analysis

TIC Library : C:\DATABASE\NIST11.L  
TIC Integration Parameters: LSCINT.P

No Library Search Compounds Detected  
\*\*\*\*\*

Data Path : Z:\voasrv\HPCHEM1\MSVOA\_V\Data\VV011821\  
Data File : VV020043.D  
Acq On : 18 Jan 2021 14:45  
Operator : SY/MD  
Sample : M1147-16 100X  
Misc : 5.0mL/MSVOA\_V/WATER  
ALS Vial : 1 Sample Multiplier: 1

Instrument :  
MSVOA\_V  
ClientSampled :  
BG4Z6

Quant Method : Z:\voasrv\HPCHEM1\MSVOA\_V\Method\SOMVLM011121WMA.M  
Quant Title : VOC Analysis

TIC Library : C:\DATABASE\NIST11.L  
TIC Integration Parameters: LSCINT.P

TIC Top Hit name	RT	EstConc	Units	Response	--Internal Standard--		
					#	RT	Resp Conc

---