

Data Path : Z:\VOASRV\HPCHEM1\MSVOA V\DATA\VV012120\  
 Data File : VV014365.D  
 Acq On : 21 Jan 2020 11:00  
 Operator : SY/MD  
 Sample : L1194-04  
 Misc : 25.0mL/MSVOA V/WATER  
 ALS Vial : 4 Sample Multiplier: 1

Instrument :  
 MSVOA\_V  
 ClientSampleID :  
 C0AC3

Quant Time: Jan 21 15:59:18 2020  
 Quant Method : Z:\VOASRV\HPCHEM1\MSVOA\_V\METHOD\SOMVTR010220WMA.M  
 Quant Title : TRACE VOA SOM01.0  
 QLast Update : Tue Jan 21 15:31:21 2020  
 Response via : Initial Calibration

Internal Standards	R.T.	QIon	Response	Conc	Units	Dev(Min)
1) 1,4-Difluorobenzene	5.66	114	767622	5.00	ug/L	0.00
28) Chlorobenzene-d5	8.89	117	688898	5.00	ug/L	0.00
60) 1,4-Dichlorobenzene-d4	11.29	152	319778	5.00	ug/L	0.00

## System Monitoring Compounds

4) Vinyl Chloride-d3	1.32	65	234984	4.38	ug/L	0.00
Spiked Amount	5.000	Range	40 - 130	Recovery	=	87.60%
7) Chloroethane-d5	1.59	69	198273	4.78	ug/L	0.00
Spiked Amount	5.000	Range	65 - 130	Recovery	=	95.60%
11) 1,1-Dichloroethene-d2	2.13	63	276062	3.49	ug/L	0.00
Spiked Amount	5.000	Range	60 - 125	Recovery	=	69.80%
20) 2-Butanone-d5	3.94	46	647700	50.20	ug/L	0.00
Spiked Amount	50.000	Range	40 - 130	Recovery	=	100.40%
24) Chloroform-d	4.39	84	505596	4.87	ug/L	0.00
Spiked Amount	5.000	Range	70 - 125	Recovery	=	97.40%
26) 1,2-Dichloroethane-d4	5.08	65	241771	4.65	ug/L	0.00
Spiked Amount	5.000	Range	70 - 130	Recovery	=	93.00%
32) Benzene-d6	5.09	84	1011157	4.92	ug/L	0.00
Spiked Amount	5.000	Range	70 - 125	Recovery	=	98.40%
36) 1,2-Dichloropropane-d6	6.11	67	325011	5.10	ug/L	0.00
Spiked Amount	5.000	Range	60 - 140	Recovery	=	102.00%
41) Toluene-d8	7.35	98	848159	4.52	ug/L	0.00
Spiked Amount	5.000	Range	70 - 130	Recovery	=	90.40%
43) trans-1,3-Dichloropropene-	7.66	79	123772	4.39	ug/L	0.00
Spiked Amount	5.000	Range	55 - 130	Recovery	=	87.80%
46) 2-Hexanone-d5	8.13	63	591599	49.56	ug/L	0.00
Spiked Amount	50.000	Range	45 - 130	Recovery	=	99.12%
57) 1,1,2,2-Tetrachloroethane-	10.25	84	216295	4.85	ug/L	0.00
Spiked Amount	5.000	Range	65 - 120	Recovery	=	97.00%
64) 1,2-Dichlorobenzene-d4	11.67	152	291184	4.85	ug/L	0.00
Spiked Amount	5.000	Range	80 - 120	Recovery	=	97.00%

## Target Compounds

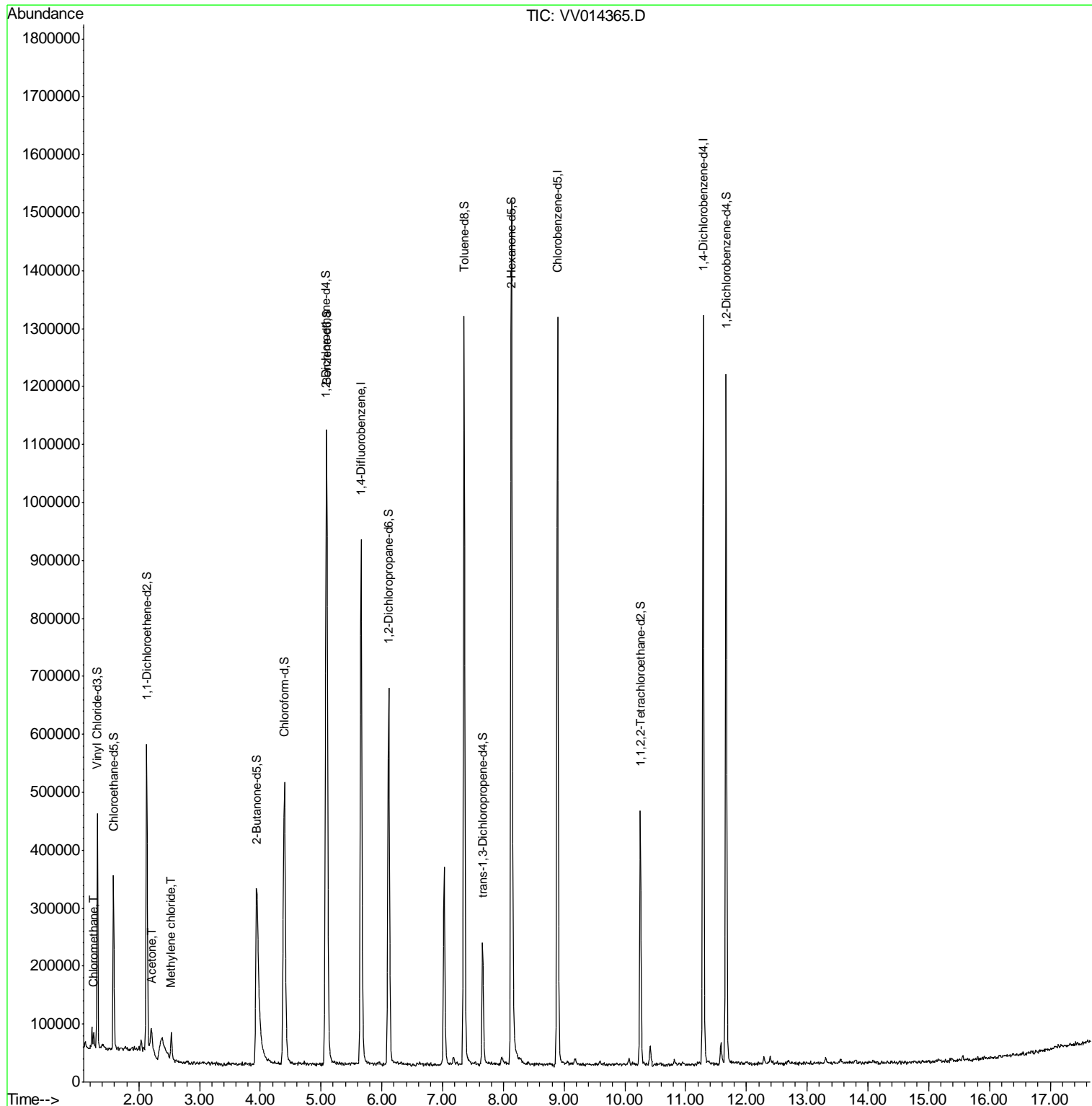
Target Compounds	R.T.	QIon	Response	Conc	Units	Ovalue
3) Chloromethane	1.25	50	16986	0.295	ug/L	99
13) Acetone	2.21	43	59562	6.704	ug/L	99
16) Methylene chloride	2.53	84	21399	0.383	ug/L	97

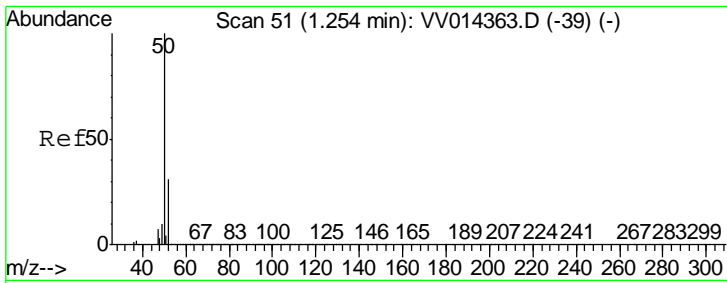
(#) = qualifier out of range (m) = manual integration (+) = signals summed

Data Path : Z:\VOASRV\HPCHEM1\MSVOA V\DATA\VV012120\  
 Data File : VV014365.D  
 Acq On : 21 Jan 2020 11:00  
 Operator : SY/MD  
 Sample : L1194-04  
 Misc : 25.0mL/MSVOA V/WATER  
 ALS Vial : 4 Sample Multiplier: 1

Instrument :  
 MSVOA\_V  
 ClientSampled :  
 C0AC3

Quant Time: Jan 21 15:59:18 2020  
 Quant Method : Z:\VOASRV\HPCHEM1\MSVOA\_V\METHOD\SOMVTR010220WMA.M  
 Quant Title : TRACE VOA SOM01.0  
 QLast Update : Tue Jan 21 15:31:21 2020  
 Response via : Initial Calibration

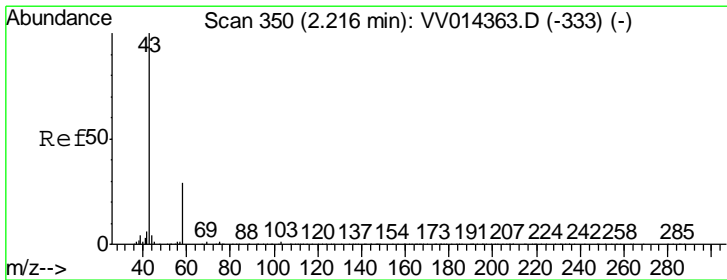
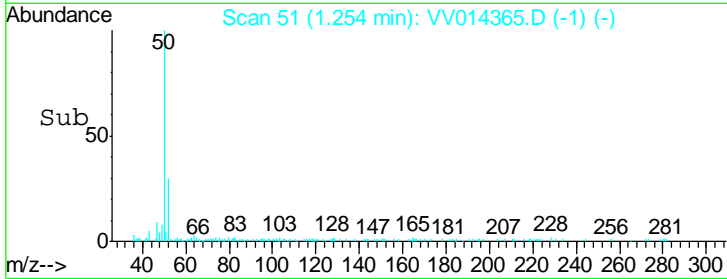
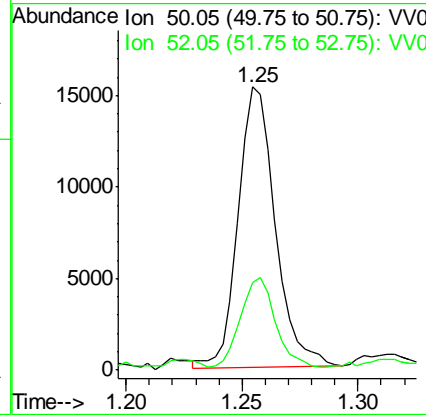
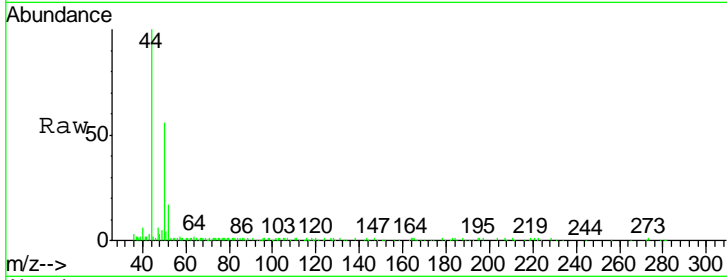




#3  
 Chloromethane  
 Concen: 0.295 ug/L  
 RT: 1.25 min Scan# 51  
 Delta R.T. 0.00 min  
 Lab File: VV014365.D  
 Acq: 21 Jan 2020 11:00

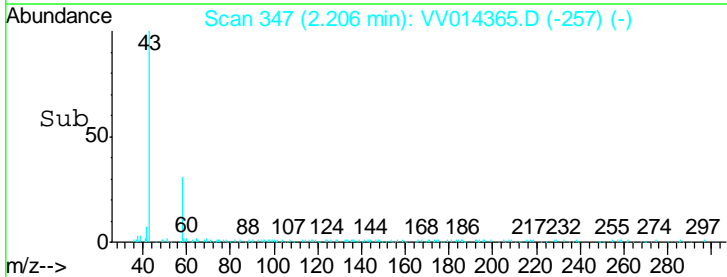
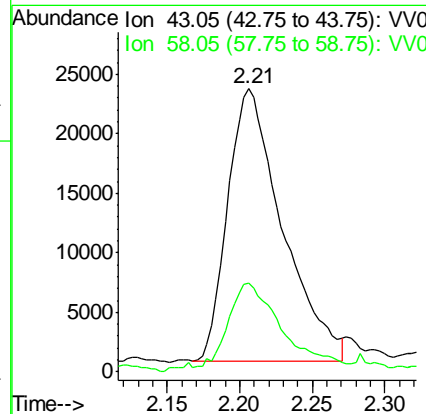
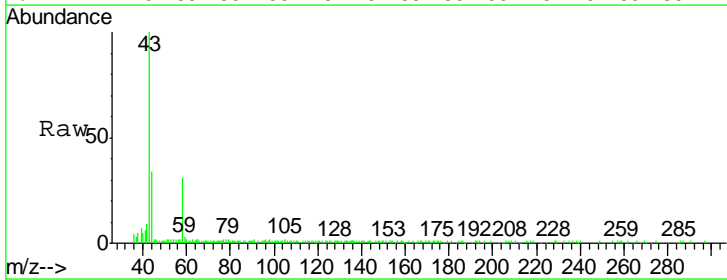
Instrument : MSVOA\_V  
 ClientSampled : C0AC3

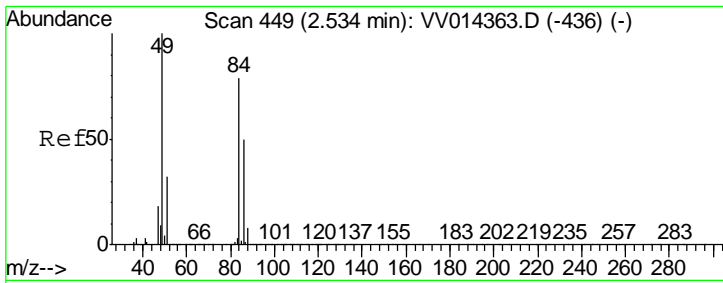
Tgt Ion: 50 Resp: 16986  
 Ion Ratio Lower Upper  
 50 100  
 52 31.0 22.3 41.3



#13  
 Acetone  
 Concen: 6.704 ug/L  
 RT: 2.21 min Scan# 347  
 Delta R.T. -0.01 min  
 Lab File: VV014365.D  
 Acq: 21 Jan 2020 11:00

Tgt Ion: 43 Resp: 59562  
 Ion Ratio Lower Upper  
 43 100  
 58 33.5 0.0 66.0





#16  
 Methylene chloride  
 Concen: 0.383 ug/L  
 RT: 2.53 min Scan# 449  
 Delta R.T. 0.00 min  
 Lab File: VV014365.D  
 Acq: 21 Jan 2020 11:00

Instrument :  
 MSVOA\_V  
 ClientSampled :  
 C0AC3

Tot Ion: 84 Resp: 21399

Ion	Ratio	Lower	Upper
84	100		
86	59.3	43.1	80.1
49	120.7	82.1	152.5

