

Data Path : Z:\voasrv\HPCHEM1\MSVOA_V\Data\VV012121\
 Data File : VV020125.D
 Acq On : 21 Jan 2021 23:36
 Operator : SY/MD
 Sample : M1181-19
 Misc : 5.0mL/MSVOA_V/WATER
 ALS Vial : 1 Sample Multiplier: 1

Instrument :
 MSVOA_V
 ClientSampleId :
 F1E48

Integration Parameters: LSCINT.P

Integrator: RTE
 Smoothing : OFF
 Sampling : 1
 Start Thrs : 0.2
 Stop Thrs : 0

Filtering: 5
 Min Area: 0 % of largest Peak
 Max Peaks: 100
 Peak Location: TOP

If leading or trailing edge < 100 prefer < Baseline drop else tangent >
 Peak separation: 5

Method : Z:\voasrv\HPCHEM1\MSVOA_V\Method\SOMVLM012121WMA.M
 Title : VOC Analysis

Signal : TIC: VV020125.D\data.ms

peak #	R.T. min	first scan	max scan	last scan	PK TY	peak height	corr. area	corr. % max.	% of total
1	1.309	62	68	81	rVB	247474	255727	13.28%	1.705%
2	1.570	142	149	162	rVB	223588	247301	12.84%	1.649%
3	2.110	307	317	347	rVB	428043	637778	33.11%	4.253%
4	3.029	600	603	605	rBV4	861	561	0.03%	0.004%
5	3.123	629	632	633	rBV	410	204	0.01%	0.001%
6	3.187	648	652	653	rBV3	536	340	0.02%	0.002%
7	3.258	672	674	676	rVB3	565	197	0.01%	0.001%
8	3.351	701	703	707	rVB3	768	416	0.02%	0.003%
9	3.377	707	711	714	rBV4	570	436	0.02%	0.003%
10	3.415	721	723	727	rBV4	760	389	0.02%	0.003%
11	3.434	727	729	732	rBV4	551	388	0.02%	0.003%
12	3.479	741	743	745	rVB	393	172	0.01%	0.001%
13	3.531	755	759	762	rBV4	711	507	0.03%	0.003%
14	3.544	762	763	767	rVV3	748	412	0.02%	0.003%
15	3.637	790	792	795	rVB4	864	415	0.02%	0.003%
16	3.891	860	871	901	rBV	114077	364624	18.93%	2.431%
17	4.354	999	1015	1041	rBV	268497	658649	34.19%	4.392%
18	4.666	1109	1112	1115	rBV3	887	487	0.03%	0.003%
19	4.762	1140	1142	1143	rBV	477	168	0.01%	0.001%
20	4.795	1148	1152	1153	rBV4	725	379	0.02%	0.003%
21	5.052	1214	1232	1258	rBV2	636437	1638388	85.05%	10.925%
22	5.460	1357	1359	1361	rBV2	790	347	0.02%	0.002%
23	5.621	1397	1409	1436	rBV	491234	981105	50.93%	6.542%
24	5.917	1487	1501	1519	rBV5	64379	154803	8.04%	1.032%
25	6.016	1530	1532	1535	rBV	669	247	0.01%	0.002%
26	6.074	1535	1550	1572	rBV	385537	782606	40.63%	5.218%
27	6.383	1643	1646	1648	rVB2	754	407	0.02%	0.003%
28	6.396	1648	1650	1651	rBV	451	223	0.01%	0.001%
29	6.447	1663	1666	1673	rBV4	598	706	0.04%	0.005%
30	6.521	1687	1689	1690	rBV	210	90	0.00%	0.001%
31	6.598	1711	1713	1716	rBV3	575	412	0.02%	0.003%
32	6.669	1731	1735	1737	rBV4	535	493	0.03%	0.003%
33	6.749	1759	1760	1763	rVB	185	50	0.00%	0.000%
34	6.766	1763	1765	1766	rBV	199	87	0.00%	0.001%
35	6.814	1776	1780	1781	rBV	149	108	0.01%	0.001%
36	6.836	1784	1787	1792	rVV2	248	240	0.01%	0.002%

Data Path : Z:\voasrv\HPCHEM1\MSVOA_V\Data\VW012121\
 Data File : VW020125.D
 Acq On : 21 Jan 2021 23:36
 Operator : SY/MD
 Sample : M1181-19
 Misc : 5.0mL/MSVOA_V/WATER
 ALS Vial : 1 Sample Multiplier: 1

Instrument :
 MSVOA_V
 ClientSampled :
 F1E48

Integration Parameters: LSCINT.P

Integrator: RTE
 Smoothing : OFF Filtering: 5
 Sampling : 1 Min Area: 0 % of largest Peak
 Start Thrs: 0.2 Max Peaks: 100
 Stop Thrs : 0 Peak Location: TOP

If leading or trailing edge < 100 prefer < Baseline drop else tangent >
 Peak separation: 5

Method : Z:\voasrv\HPCHEM1\MSVOA_V\Method\SOMVLM012121WMA.M
 Title : VOC Analysis

37	6.862	1792	1795	1797	rVB2	146	79	0.00%	0.001%
38	6.884	1797	1802	1805	rBV2	371	352	0.02%	0.002%
39	6.926	1813	1815	1818	rBV	297	188	0.01%	0.001%
40	6.991	1824	1835	1855	rBV	212443	380560	19.76%	2.538%
41	7.196	1895	1899	1901	rBV4	557	465	0.02%	0.003%
42	7.322	1925	1938	1970	rBV	853467	1490420	77.37%	9.938%
43	7.627	2022	2033	2055	rBV	149230	262595	13.63%	1.751%
44	7.981	2128	2143	2162	rBV	1157206	1926373	100.00%	12.845%
45	8.093	2168	2178	2213	rBV2	417778	822467	42.70%	5.484%
46	8.782	2390	2392	2394	rBV3	898	389	0.02%	0.003%
47	8.859	2403	2416	2444	rBV	744527	1224972	63.59%	8.168%
48	9.344	2563	2567	2569	rBV3	595	480	0.02%	0.003%
49	9.679	2667	2671	2673	rBV4	834	685	0.04%	0.005%
50	9.904	2740	2741	2743	rBV	285	129	0.01%	0.001%
51	9.923	2743	2747	2748	rBV3	466	319	0.02%	0.002%
52	10.010	2773	2774	2775	rBV	364	97	0.01%	0.001%
53	10.097	2799	2801	2803	rBV2	447	199	0.01%	0.001%
54	10.164	2820	2822	2826	rBV2	606	389	0.02%	0.003%
55	10.222	2826	2840	2858	rBV	455462	706235	36.66%	4.709%
56	10.617	2958	2963	2965	rBV4	682	609	0.03%	0.004%
57	10.682	2981	2983	2987	rBV2	469	338	0.02%	0.002%
58	10.746	3001	3003	3004	rBV2	478	172	0.01%	0.001%
59	10.775	3009	3012	3018	rBV4	697	771	0.04%	0.005%
60	11.013	3083	3086	3088	rBV	410	317	0.02%	0.002%
61	11.254	3150	3161	3189	rBV	800159	1221310	63.40%	8.144%
62	11.630	3266	3278	3299	rBV	799924	1222666	63.47%	8.153%
63	12.148	3437	3439	3441	rBV2	501	231	0.01%	0.002%
64	12.170	3443	3446	3447	rBV	698	349	0.02%	0.002%
65	12.415	3520	3522	3526	rBV3	466	291	0.02%	0.002%
66	12.743	3620	3624	3627	rBV3	908	641	0.03%	0.004%
67	12.923	3678	3680	3681	rBV	825	303	0.02%	0.002%
68	13.354	3812	3814	3816	rVB3	570	195	0.01%	0.001%
69	13.791	3947	3950	3954	rBV4	789	549	0.03%	0.004%
70	13.990	4005	4012	4016	rBV2	690	944	0.05%	0.006%

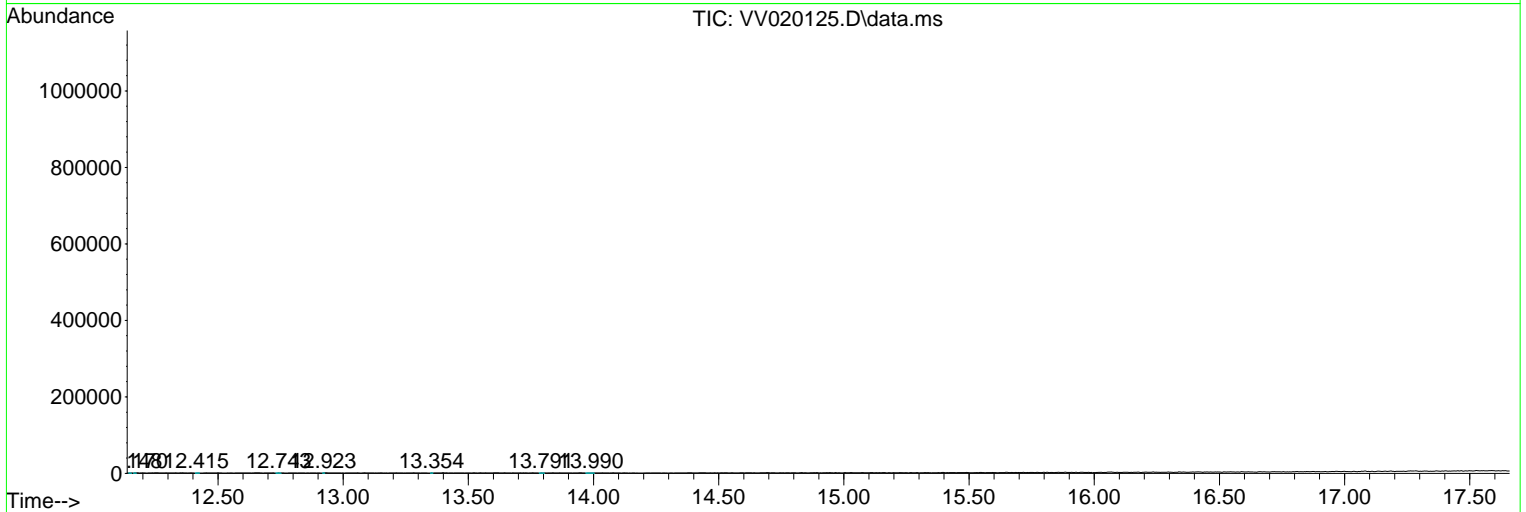
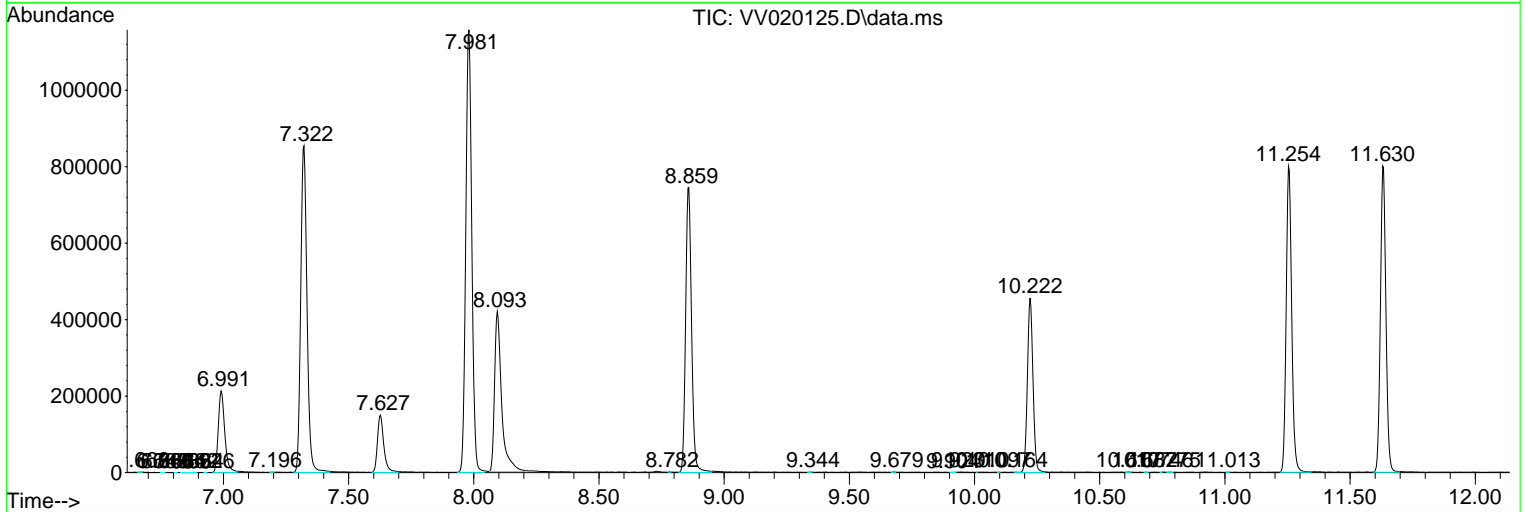
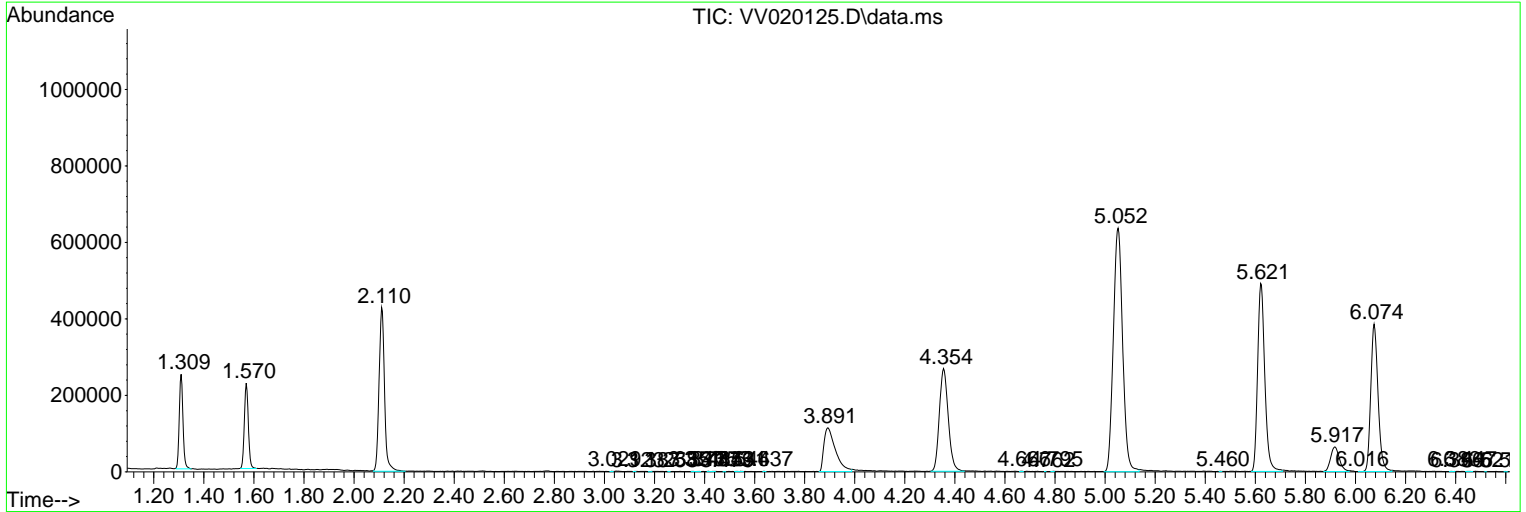
Sum of corrected areas: 14996941

Data Path : Z:\voasrv\HPCHEM1\MSVOA_V\Data\VV012121\
 Data File : VV020125.D
 Acq On : 21 Jan 2021 23:36
 Operator : SY/MD
 Sample : M1181-19
 Misc : 5.0mL/MSVOA_V/WATER
 ALS Vial : 1 Sample Multiplier: 1

Instrument :
 MSVOA_V
 Client Sampled :
 F1E48

Quant Method : Z:\voasrv\HPCHEM1\MSVOA_V\Method\SOMVLM012121WMA.M
 Quant Title : VOC Analysis

TIC Library : C:\DATABASE\NIST11.L
 TIC Integration Parameters: LSCINT.P



Data Path : Z:\voasrv\HPCHEM1\MSVOA_V\Data\VV012121\
Data File : VV020125.D
Acq On : 21 Jan 2021 23:36
Operator : SY/MD
Sample : M1181-19
Misc : 5.0mL/MSVOA_V/WATER
ALS Vial : 1 Sample Multiplier: 1

Instrument :
MSVOA_V
ClientSampled :
F1E48

Quant Method : Z:\voasrv\HPCHEM1\MSVOA_V\Method\SOMVLM012121WMA.M
Quant Title : VOC Analysis

TIC Library : C:\DATABASE\NIST11.L
TIC Integration Parameters: LSCINT.P

No Library Search Compounds Detected

Data Path : Z:\voasrv\HPCHEM1\MSVOA_V\Data\VV012121\
Data File : VV020125.D
Acq On : 21 Jan 2021 23:36
Operator : SY/MD
Sample : M1181-19
Misc : 5.0mL/MSVOA_V/WATER
ALS Vial : 1 Sample Multiplier: 1

Instrument :
MSVOA_V
ClientSampled :
F1E48

Quant Method : Z:\voasrv\HPCHEM1\MSVOA_V\Method\SOMVLM012121WMA.M
Quant Title : VOC Analysis

TIC Library : C:\DATABASE\NIST11.L
TIC Integration Parameters: LSCINT.P

TIC Top Hit name	RT	EstConc	Units	Response	--Internal Standard--		
					#	RT	Resp Conc
