

Data Path : Z:\voasrv\HPCHEM1\MSVOA_V\Data\VW012224\
 Data File : VW033807.D
 Acq On : 22 Jan 2024 16:59
 Operator : SY/MD
 Sample : P1190-24
 Misc : 5.0mL/MSVOA_V/WATER
 ALS Vial : 18 Sample Multiplier: 1

Instrument :
 MSVOA_V
 ClientSampleId :

Quant Time: Jan 22 23:46:01 2024
 Quant Method : Z:\voasrv\HPCHEM1\MSVOA_V\Method\SFAMVLM011024WMA.M
 Quant Title : VOC Analysis
 QLast Update : Mon Jan 22 23:41:48 2024
 Response via : Initial Calibration

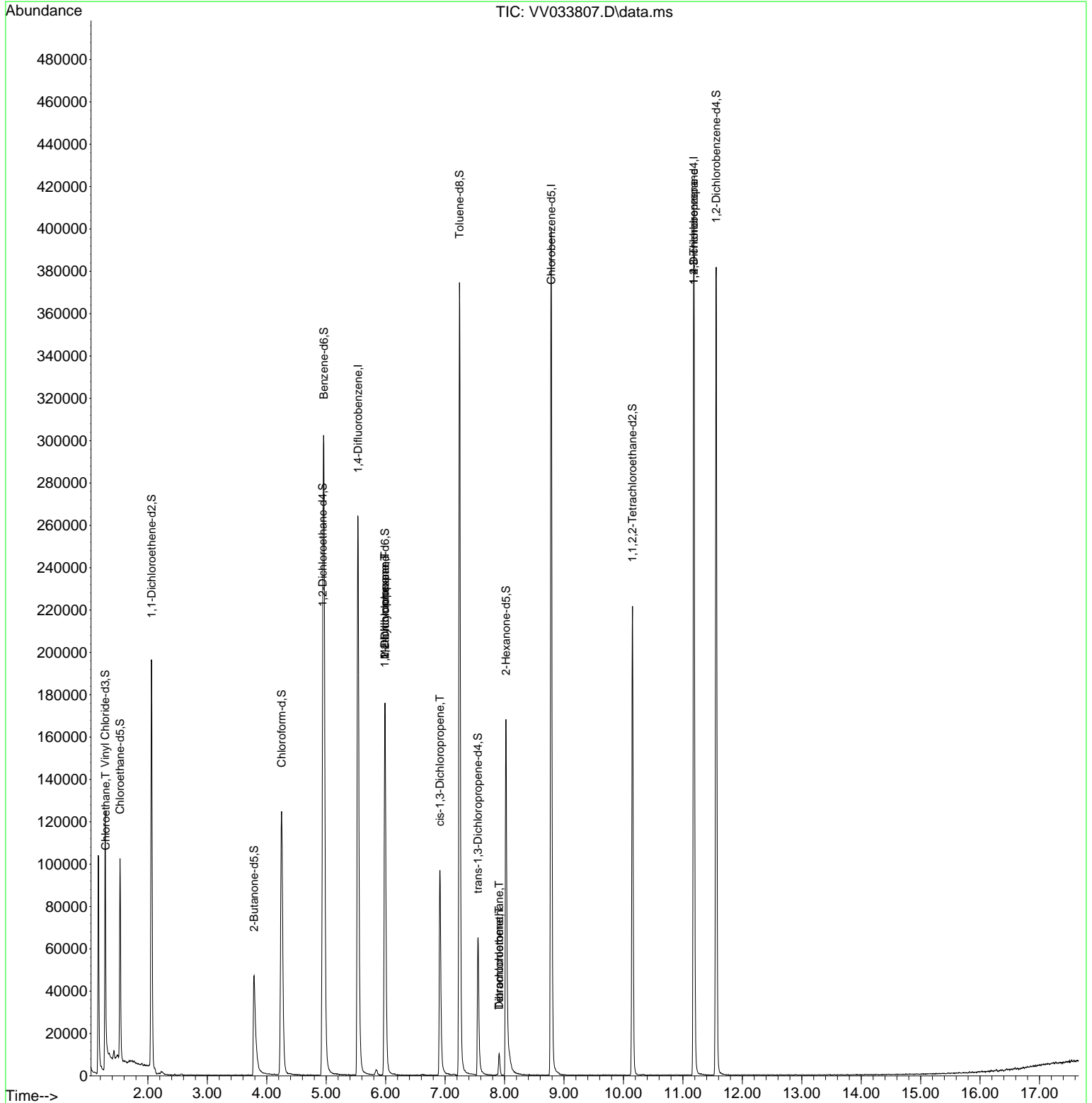
Compound	R.T.	QIon	Response	Conc	Units	Dev(Min)
Internal Standards						
1) 1,4-Difluorobenzene	5.535	114	227047	50.000	ug/L	0.00
28) Chlorobenzene-d5	8.786	117	212855	50.000	ug/L	0.00
58) 1,4-Dichlorobenzene-d4	11.185	152	103132	50.000	ug/L	0.00
System Monitoring Compounds						
4) Vinyl Chloride-d3	1.281	65	70651	40.489	ug/L	0.00
Spiked Amount	50.000	Range	60 - 135	Recovery	=	80.980%
7) Chloroethane-d5	1.532	69	60253	43.602	ug/L	0.00
Spiked Amount	50.000	Range	70 - 130	Recovery	=	87.200%
11) 1,1-Dichloroethene-d2	2.063	65	33951	45.209	ug/L	0.00
Spiked Amount	50.000	Range	60 - 125	Recovery	=	90.420%
21) 2-Butanone-d5	3.786	46	80418	67.189	ug/L	0.00
Spiked Amount	100.000	Range	40 - 130	Recovery	=	67.190%
24) Chloroform-d	4.249	84	132142	42.350	ug/L	0.00
Spiked Amount	50.000	Range	70 - 125	Recovery	=	84.700%
26) 1,2-Dichloroethane-d4	4.940	65	91492	45.382	ug/L	0.00
Spiked Amount	50.000	Range	70 - 125	Recovery	=	90.760%
32) Benzene-d6	4.960	84	265400	43.858	ug/L	0.00
Spiked Amount	50.000	Range	70 - 125	Recovery	=	87.720%
36) 1,2-Dichloropropane-d6	5.989	67	83566	41.953	ug/L	0.00
Spiked Amount	50.000	Range	70 - 120	Recovery	=	83.900%
41) Toluene-d8	7.243	98	242184	44.419	ug/L	0.00
Spiked Amount	50.000	Range	80 - 120	Recovery	=	88.840%
43) trans-1,3-Dichloroprop...	7.554	79	39084	39.702	ug/L	0.00
Spiked Amount	50.000	Range	60 - 125	Recovery	=	79.400%
47) 2-Hexanone-d5	8.024	63	58659	70.995	ug/L	0.00
Spiked Amount	100.000	Range	45 - 130	Recovery	=	71.000%
56) 1,1,2,2-Tetrachloroeth...	10.152	84	102128	40.162	ug/L	0.00
Spiked Amount	50.000	Range	65 - 120	Recovery	=	80.320%
66) 1,2-Dichlorobenzene-d4	11.561	152	93928	48.003	ug/L	0.00
Spiked Amount	50.000	Range	80 - 120	Recovery	=	96.000%
Target Compounds						
8) Chloroethane	1.288	64	26795	21.869	ug/L #	72
35) Methylcyclohexane	5.989	83	20056	6.988	ug/L #	16
37) 1,2-Dichloropropane	5.985	63	10424	6.059	ug/L #	88
39) cis-1,3-Dichloropropene	6.915	75	3027	1.054	ug/L	85
46) Tetrachloroethene	7.908	164	2356	1.915	ug/L	89
49) Dibromochloromethane	7.908	129	2246	1.382	ug/L #	10
61) 1,2,3-Trichloropropane	11.185	75	12995	7.100	ug/L #	64

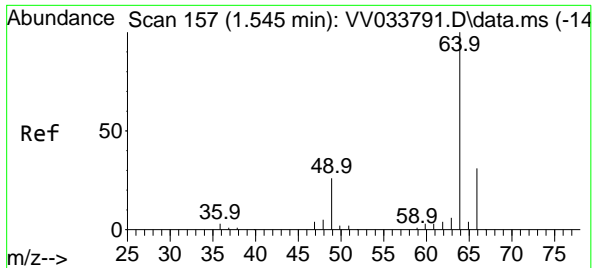
(#) = qualifier out of range (m) = manual integration (+) = signals summed

Data Path : Z:\voasrv\HPCHEM1\MSVOA_V\Data\VV012224\
 Data File : VV033807.D
 Acq On : 22 Jan 2024 16:59
 Operator : SY/MD
 Sample : P1190-24
 Misc : 5.0mL/MSVOA_V/WATER
 ALS Vial : 18 Sample Multiplier: 1

Instrument :
 MSVOA_V
 ClientSampleId :

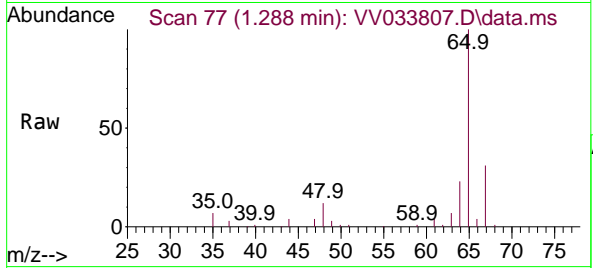
Quant Time: Jan 22 23:46:01 2024
 Quant Method : Z:\voasrv\HPCHEM1\MSVOA_V\Method\SFAMVLM011024WMA.M
 Quant Title : VOC Analysis
 QLast Update : Mon Jan 22 23:41:48 2024
 Response via : Initial Calibration



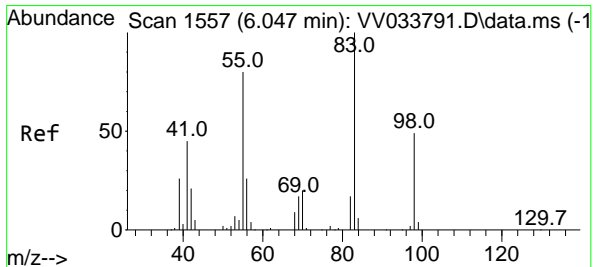
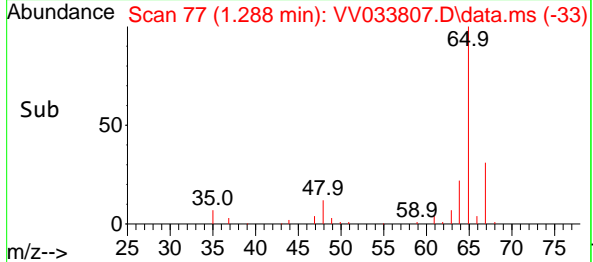
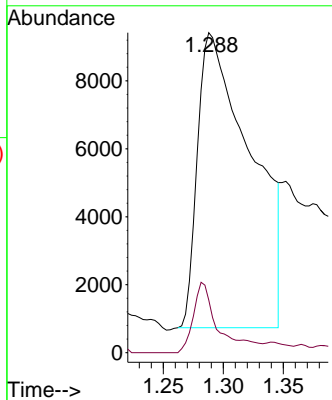


#8
 Chloroethane
 Concen: 21.869 ug/L
 RT: 1.288 min Scan# 71
 Delta R.T. -0.257 min
 Lab File: VV033807.D
 Acq: 22 Jan 2024 16:59

Instrument :
 MSVOA_V
 ClientSampleId :

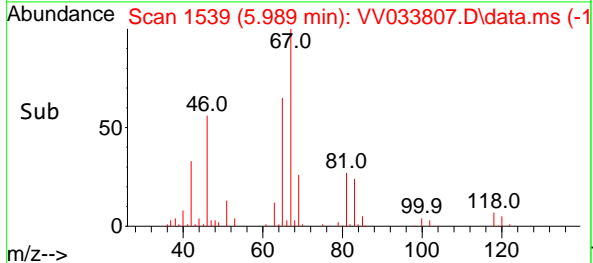
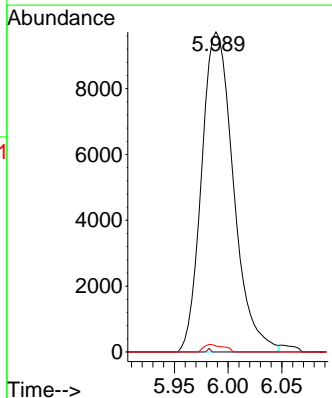
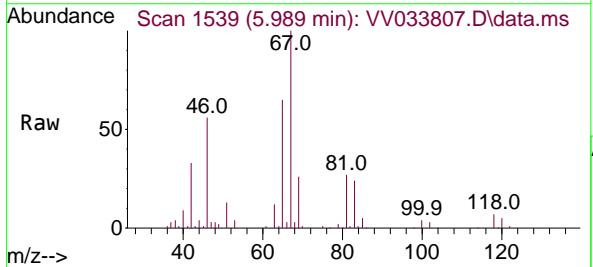


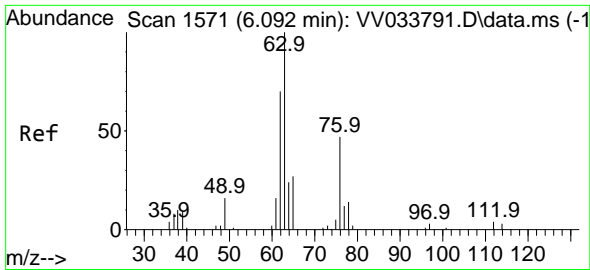
Tgt Ion: 64 Resp: 26795
 Ion Ratio Lower Upper
 64 100
 66 16.5 22.5 41.9#



#35
 Methylcyclohexane
 Concen: 6.988 ug/L
 RT: 5.989 min Scan# 1539
 Delta R.T. -0.058 min
 Lab File: VV033807.D
 Acq: 22 Jan 2024 16:59

Tgt Ion: 83 Resp: 20056
 Ion Ratio Lower Upper
 83 100
 55 0.0 67.1 100.7#
 98 1.4 37.7 56.5#

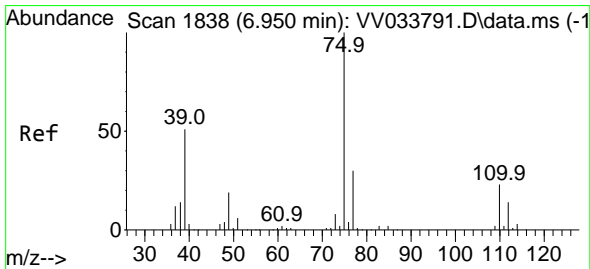
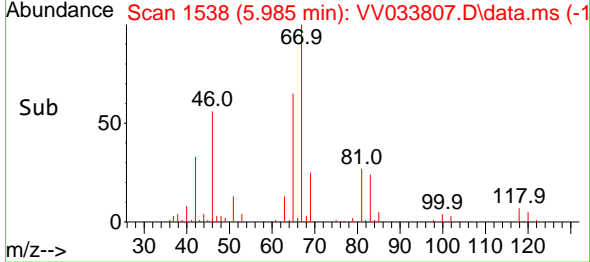
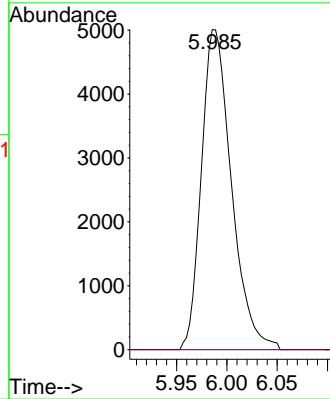
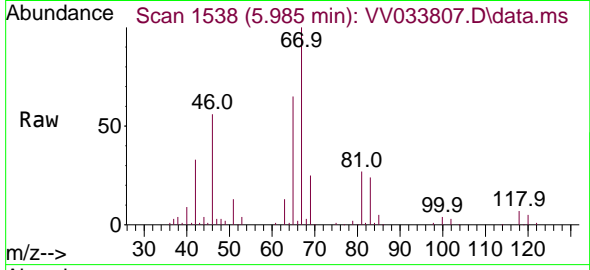




#37
 1,2-Dichloropropane
 Concen: 6.059 ug/L
 RT: 5.985 min Scan# 1111
 Delta R.T. -0.106 min
 Lab File: VV033807.D
 Acq: 22 Jan 2024 16:59

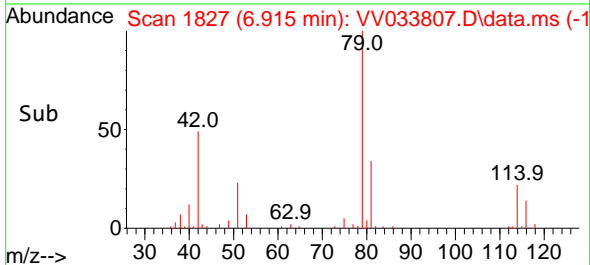
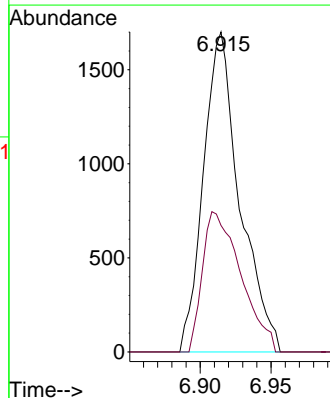
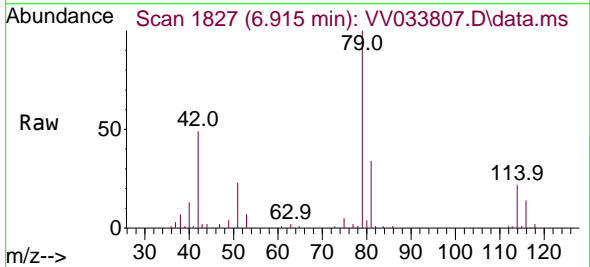
Instrument : MSVOA_V
 ClientSampleId :

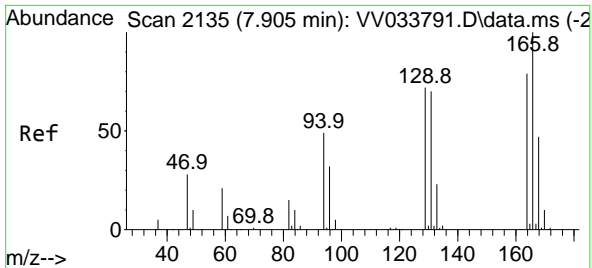
Tgt Ion: 63 Resp: 10424
 Ion Ratio Lower Upper
 63 100
 112 0.0 3.1 4.7#



#39
 cis-1,3-Dichloropropene
 Concen: 1.054 ug/L
 RT: 6.915 min Scan# 1827
 Delta R.T. -0.036 min
 Lab File: VV033807.D
 Acq: 22 Jan 2024 16:59

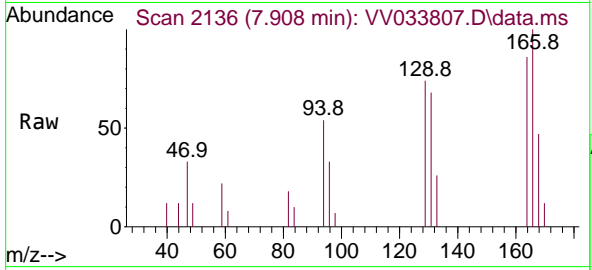
Tgt Ion: 75 Resp: 3027
 Ion Ratio Lower Upper
 75 100
 77 39.6 22.0 41.0





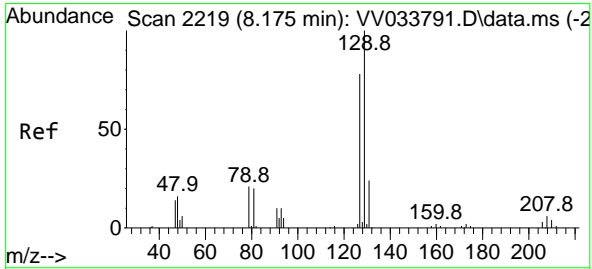
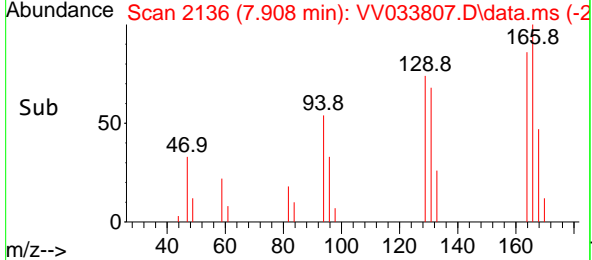
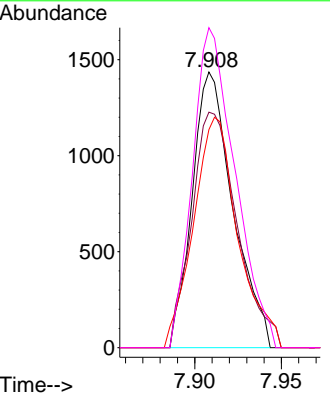
#46
 Tetrachloroethene
 Concen: 1.915 ug/L
 RT: 7.908 min Scan# 2136
 Delta R.T. 0.003 min
 Lab File: VV033807.D
 Acq: 22 Jan 2024 16:59

Instrument : MSVOA_V
 ClientSampleId :

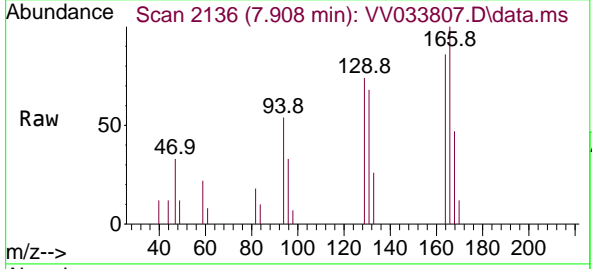


Tgt Ion:164 Resp: 2356

Ion	Ratio	Lower	Upper
164	100		
129	85.4	66.1	122.7
131	79.1	65.9	122.5
166	116.1	88.5	164.3

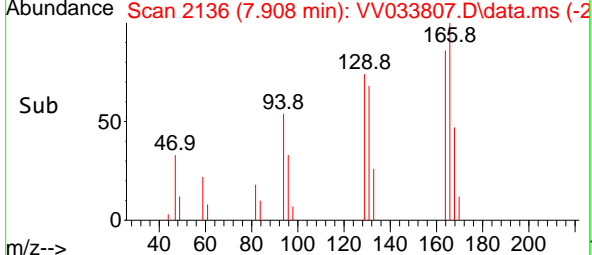
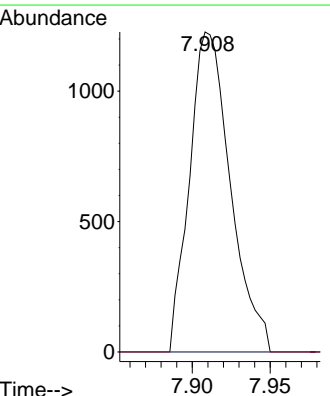


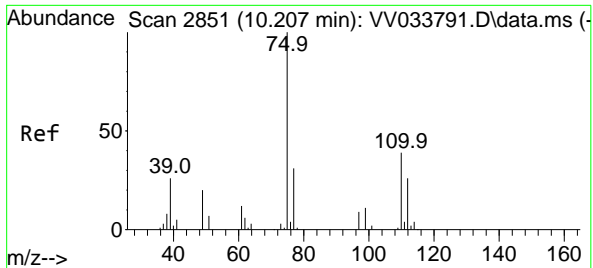
#49
 Dibromochloromethane
 Concen: 1.382 ug/L
 RT: 7.908 min Scan# 2136
 Delta R.T. -0.267 min
 Lab File: VV033807.D
 Acq: 22 Jan 2024 16:59



Tgt Ion:129 Resp: 2246

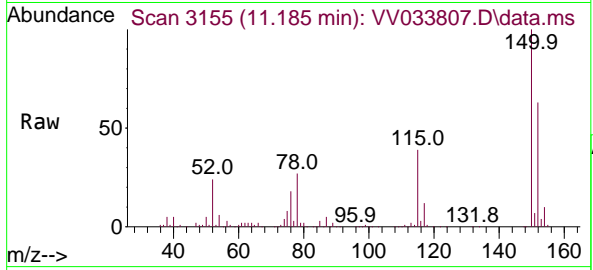
Ion	Ratio	Lower	Upper
129	100		
127	0.0	54.5	101.3#





#61
 1,2,3-Trichloropropane
 Concen: 7.100 ug/L
 RT: 11.185 min Scan# 31
 Delta R.T. 0.977 min
 Lab File: VV033807.D
 Acq: 22 Jan 2024 16:59

Instrument : MSVOA_V
 ClientSampleId :



Tgt Ion: 75 Resp: 12995

Ion	Ratio	Lower	Upper
75	100		
77	36.7	25.3	37.9
110	2.4	29.5	44.3#

