

Data Path : Z:\VOASRV\HPCHEM1\MSVOA\_V\DATA\VV012319\  
 Data File : VV009245.D  
 Acq On : 23 Jan 2019 13:34  
 Operator : SY/MD  
 Sample : VV0123SBL01  
 Misc : 5.00G/5ML/MSVOA\_V/SOIL  
 ALS Vial : 3 Sample Multiplier: 1

Quant Time: Jan 24 03:52:09 2019  
 Quant Method : Z:\VOASRV\HPCHEM1\MSVOA\_V\METHOD\82V012219S.M  
 Quant Title : SW846 8260  
 QLast Update : Wed Jan 23 01:54:58 2019  
 Response via : Initial Calibration

Internal Standards	R.T.	QIon	Response	Conc	Units	Dev(Min)
1) Pentafluorobenzene	4.73	168	82905	50.00	ug/l	0.00
34) 1,4-Difluorobenzene	5.66	114	137917	50.00	ug/l	0.00
63) Chlorobenzene-d5	8.89	117	122101	50.00	ug/l	0.00
72) 1,4-Dichlorobenzene-d4	11.30	152	57818	50.00	ug/l	0.00

## System Monitoring Compounds

33) 1,2-Dichloroethane-d4	5.07	65	51938	51.37	ug/l	0.00
Spiked Amount	50.000		Recovery	=	102.74%	
35) Dibromofluoromethane	4.63	113	46269	51.56	ug/l	0.00
Spiked Amount	50.000		Recovery	=	103.12%	
50) Toluene-d8	7.36	98	179066	51.27	ug/l	0.00
Spiked Amount	50.000		Recovery	=	102.54%	
62) 4-Bromofluorobenzene	10.12	95	62614	47.57	ug/l	0.00
Spiked Amount	50.000		Recovery	=	95.14%	

## Target Compounds

						Qvalue
3) Chloromethane	1.25	50	152	0.168	ug/l #	42
11) Tert butyl alcohol	2.65	59	1974	11.924	ug/l #	72
14) Allyl chloride	2.51	41	95	0.063	ug/l #	24
16) Acetone	2.18	43	1177	4.291	ug/l #	84
17) Carbon Disulfide	2.31	76	85	0.032	ug/l #	75
18) Methyl Acetate	2.46	43	281	0.384	ug/l #	51
20) Methylene Chloride	2.53	84	3182	Below Cal		98
23) Vinyl Acetate	3.30	43	65	0.037	ug/l #	73
25) 2-Butanone	4.02	43	72	0.230	ug/l #	50
31) Cyclohexane	4.73	56	1949	1.065	ug/l #	8
36) 1,1-Dichloropropene	4.73	75	7207	4.707	ug/l #	44
37) Ethyl Acetate	4.04	43	20	0.034	ug/l #	67
38) Carbon Tetrachloride	4.73	117	8559	5.583	ug/l #	18
40) Benzene	5.15	78	46	0.011	ug/l #	51
44) Trichloroethene	5.95	130	19	0.017	ug/l	1
48) Methyl methacrylate	6.68	41	207	0.350	ug/l #	41
51) 4-Methyl-2-Pentanone	7.28	43	562	0.957	ug/l #	37
52) Toluene	7.43	92	187	0.069	ug/l #	11
59) 2-Hexanone	8.20	43	368	0.866	ug/l	92
65) Chlorobenzene	8.93	112	205	0.072	ug/l #	42
67) Ethyl Benzene	9.06	91	333	0.066	ug/l #	44
68) m/p-Xylenes	9.18	106	273	0.142	ug/l	77
70) Styrene	9.61	104	238	0.084	ug/l #	54
73) Isopropylbenzene	9.97	105	319	0.067	ug/l #	49
76) 1,2,3-Trichloropropane	10.12	75	31375	49.565	ug/l #	30
77) Bromobenzene	10.25	156	67	0.066	ug/l #	1
78) n-propylbenzene	10.40	91	799	0.141	ug/l	79
79) 2-Chlorotoluene	10.58	91	628	0.184	ug/l	92
80) 1,3,5-Trimethylbenzene	10.59	105	344	0.086	ug/l	85
81) trans-1,4-Dichloro-2-buten	10.12	75	31375	140.264	ug/l #	9
82) 4-Chlorotoluene	10.58	91	628	0.156	ug/l	99
83) tert-Butylbenzene	10.91	119	297	0.078	ug/l #	79
84) 1,2,4-Trimethylbenzene	10.96	105	739	0.183	ug/l	68
85) sec-Butylbenzene	11.13	105	629	0.126	ug/l #	56

Data Path : Z:\VOASRV\HPCHEM1\MSVOA\_V\DATA\VV012319\  
 Data File : VV009245.D  
 Acq On : 23 Jan 2019 13:34  
 Operator : SY/MD  
 Sample : VV0123SBL01  
 Misc : 5.00G/5ML/MSVOA\_V/SOIL  
 ALS Vial : 3 Sample Multiplier: 1

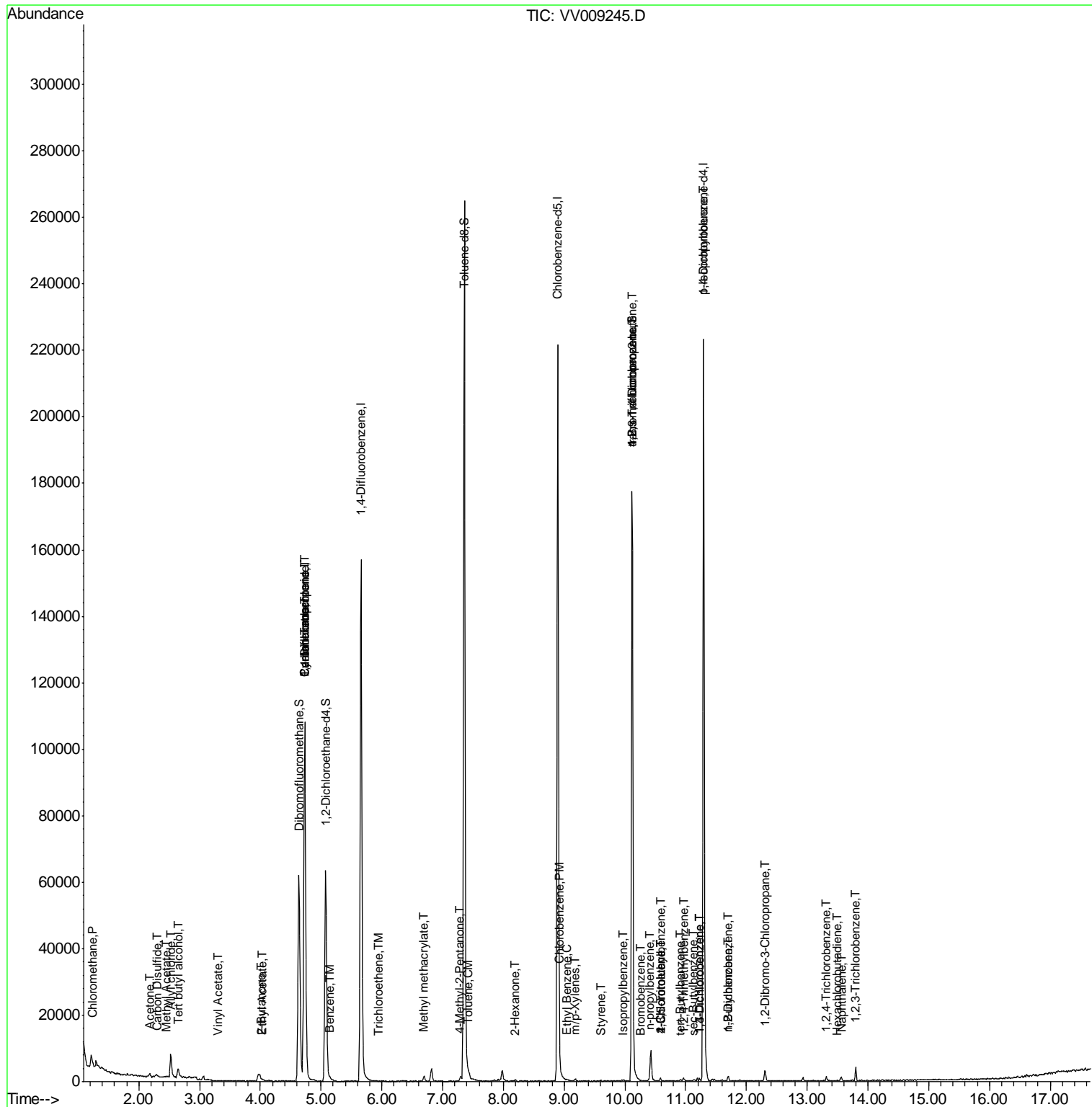
Quant Time: Jan 24 03:52:09 2019  
 Quant Method : Z:\VOASRV\HPCHEM1\MSVOA\_V\METHOD\82V012219S.M  
 Quant Title : SW846 8260  
 QLast Update : Wed Jan 23 01:54:58 2019  
 Response via : Initial Calibration

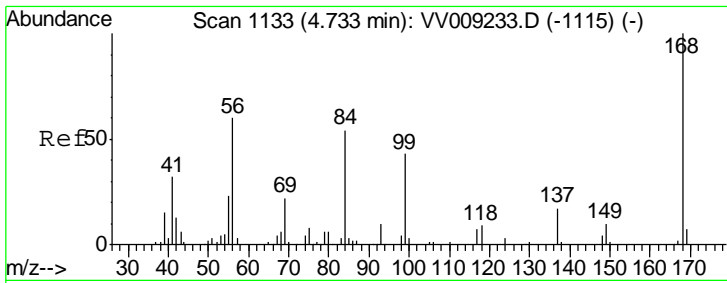
Internal Standards	R.T.	QIon	Response	Conc	Units	Dev(Min)
86) p-Isopropyltoluene	11.29	119	682	0.156	ug/l	89
87) 1,3-Dichlorobenzene	11.23	146	444	0.209	ug/l	68
88) 1,4-Dichlorobenzene	11.23	146	444	0.207	ug/l	69
89) n-Butylbenzene	11.70	91	961	0.226	ug/l	85
91) 1,2-Dichlorobenzene	11.70	146	434	0.232	ug/l #	60
92) 1,2-Dibromo-3-Chloropropan	12.30	75	19	0.141	ug/l #	4
93) 1,2,4-Trichlorobenzene	13.31	180	667	0.554	ug/l	90
94) Hexachlorobutadiene	13.49	225	140	0.187	ug/l #	19
95) Naphthalene	13.56	128	1548	0.743	ug/l #	88
96) 1,2,3-Trichlorobenzene	13.80	180	468	0.459	ug/l	81

(#) = qualifier out of range (m) = manual integration (+) = signals summed

Data Path : Z:\VOASRV\HPCHEM1\MSVOA\_V\DATA\VV012319\  
 Data File : VV009245.D  
 Acq On : 23 Jan 2019 13:34  
 Operator : SY/MD  
 Sample : VV0123SBL01  
 Misc : 5.00G/5ML/MSVOA\_V/SOIL  
 ALS Vial : 3 Sample Multiplier: 1

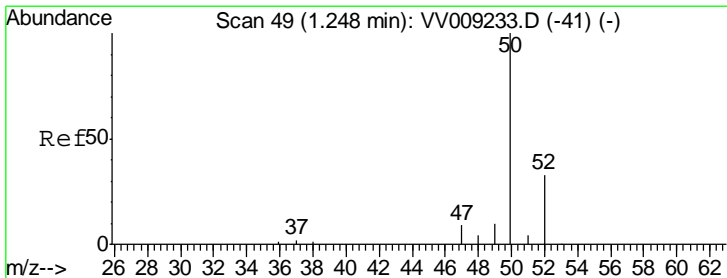
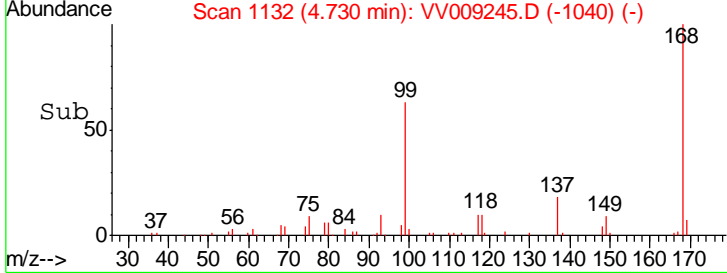
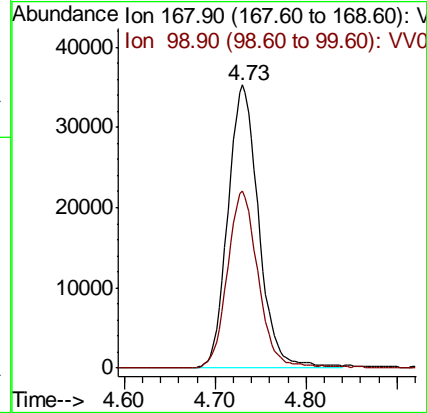
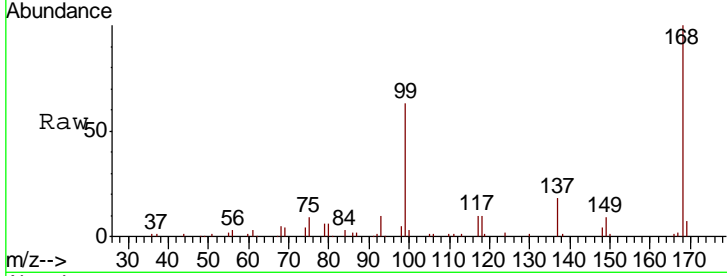
Quant Time: Jan 24 03:52:09 2019  
 Quant Method : Z:\VOASRV\HPCHEM1\MSVOA\_V\METHOD\82V012219S.M  
 Quant Title : SW846 8260  
 QLast Update : Wed Jan 23 01:54:58 2019  
 Response via : Initial Calibration





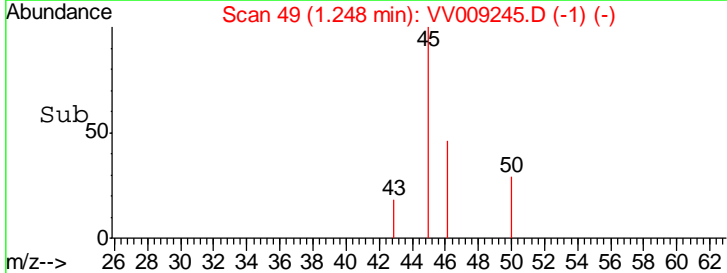
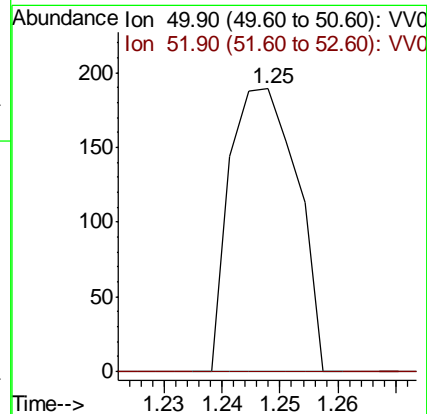
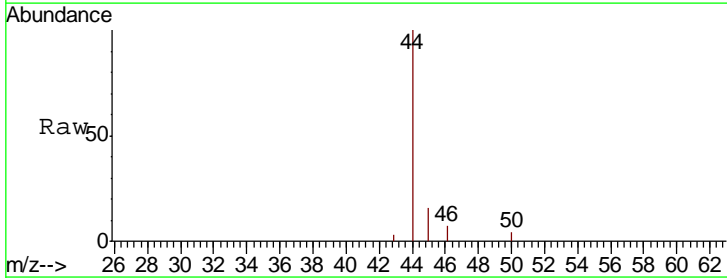
#1  
 Pentafluorobenzene  
 Concen: 50.000 ug/l  
 RT: 4.73 min Scan# 1132  
 Delta R.T. -0.00 min  
 Lab File: VV009245.D  
 Acq: 23 Jan 2019 13:34

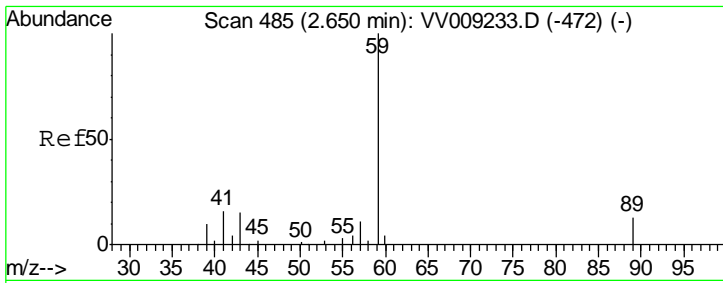
Tgt Ion: 168 Resp: 82905  
 Ion Ratio Lower Upper  
 168 100  
 99 62.8 50.9 76.3



#3  
 Chloromethane  
 Concen: 0.168 ug/l  
 RT: 1.25 min Scan# 49  
 Delta R.T. 0.00 min  
 Lab File: VV009245.D  
 Acq: 23 Jan 2019 13:34

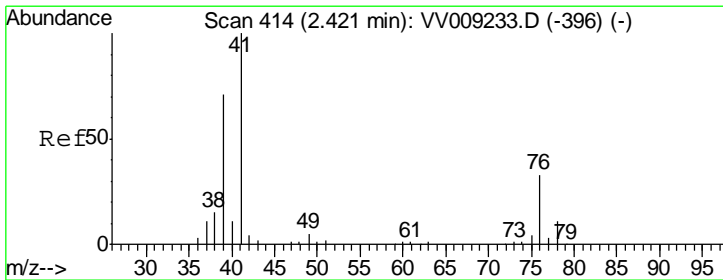
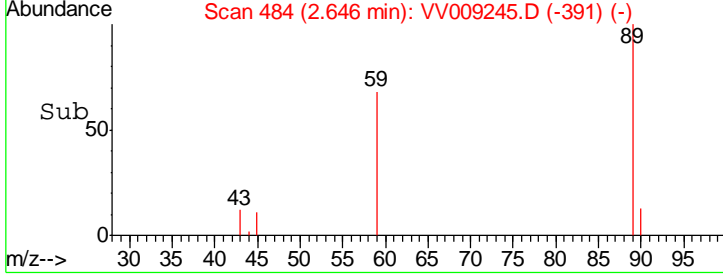
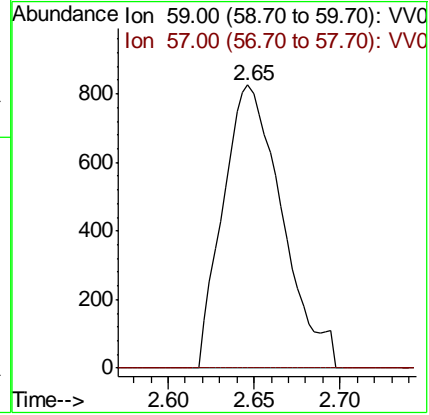
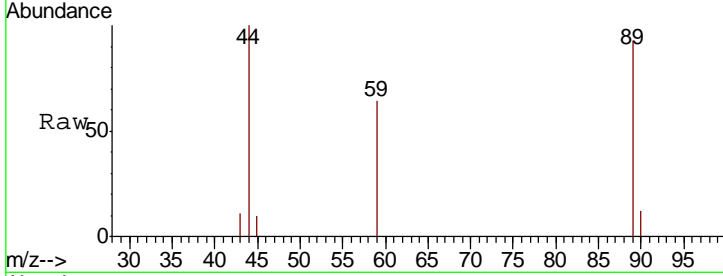
Tgt Ion: 50 Resp: 152  
 Ion Ratio Lower Upper  
 50 100  
 52 0.0 26.3 39.5#





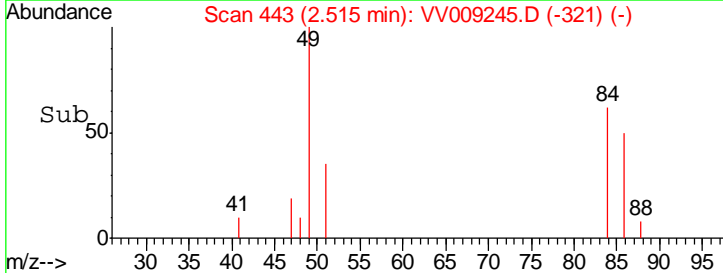
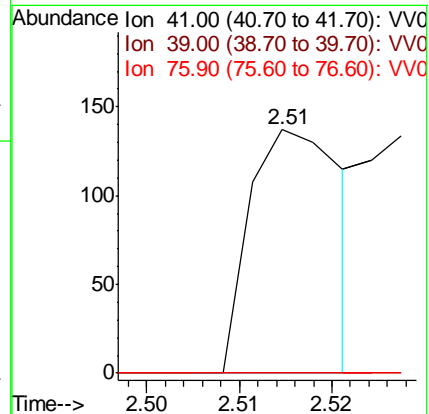
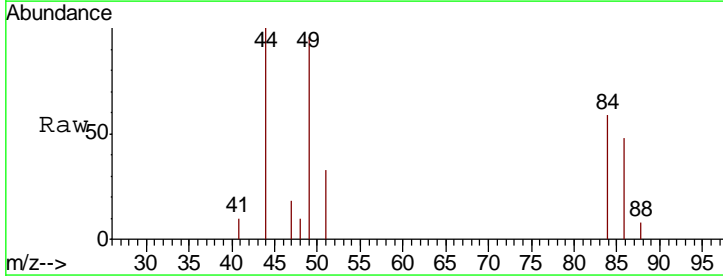
#11  
 Tert butyl alcohol  
 Concen: 11.924 ug/l  
 RT: 2.65 min Scan# 484  
 Delta R.T. -0.00 min  
 Lab File: VV009245.D  
 Acq: 23 Jan 2019 13:34

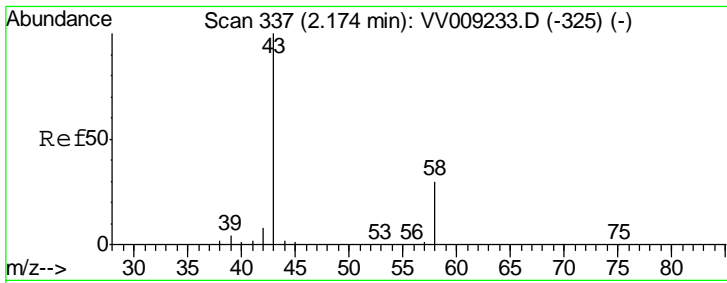
Tgt Ion	Resp	Lower	Upper
59	100		
57	0.0	8.4	12.6#



#14  
 Allyl chloride  
 Concen: 0.063 ug/l  
 RT: 2.51 min Scan# 443  
 Delta R.T. 0.09 min  
 Lab File: VV009245.D  
 Acq: 23 Jan 2019 13:34

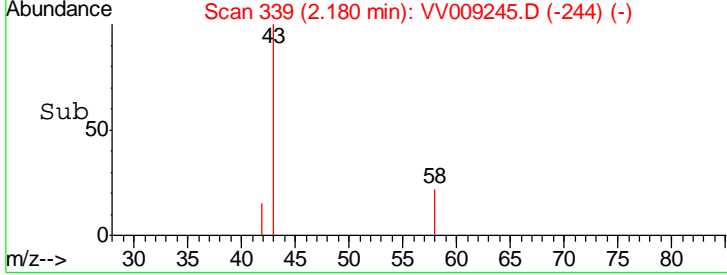
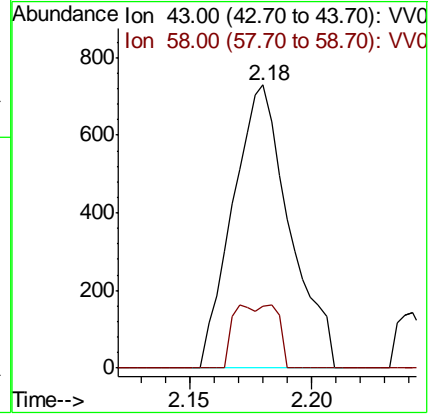
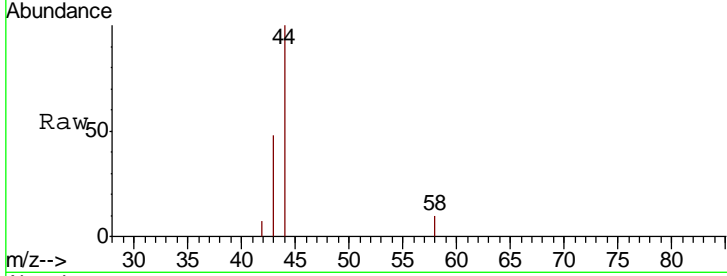
Tgt Ion	Resp	Lower	Upper
41	100		
39	0.0	55.1	82.7#
76	0.0	26.7	40.1#





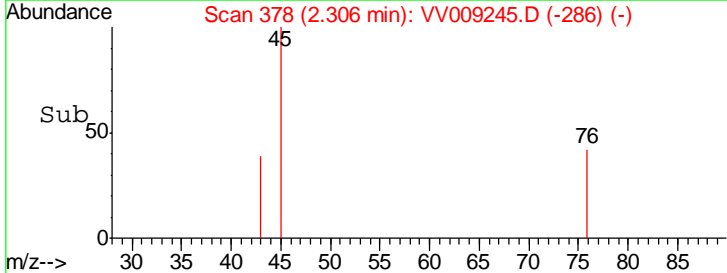
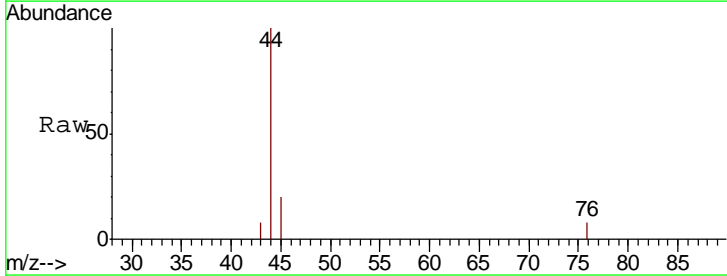
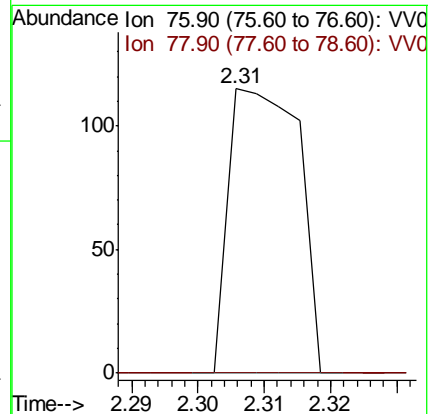
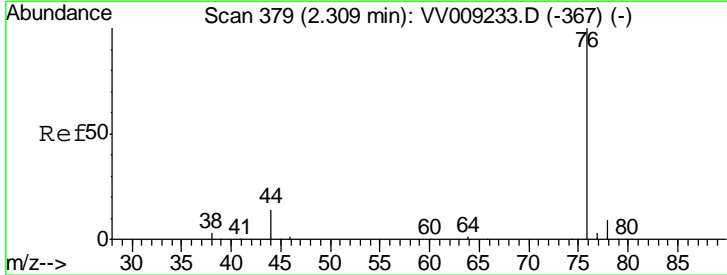
#16  
 Acetone  
 Concen: 4.291 ug/l  
 RT: 2.18 min Scan# 339  
 Delta R.T. 0.01 min  
 Lab File: VV009245.D  
 Acq: 23 Jan 2019 13:34

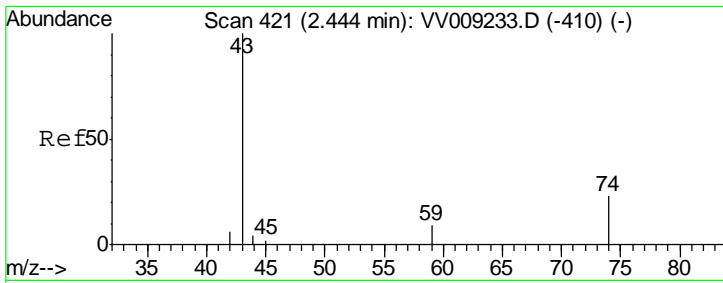
Tgt Ion	Resp	Lower	Upper
43	1177		
43	100		
58	21.8	24.4	36.6#



#17  
 Carbon Disulfide  
 Concen: 0.032 ug/l  
 RT: 2.31 min Scan# 378  
 Delta R.T. -0.00 min  
 Lab File: VV009245.D  
 Acq: 23 Jan 2019 13:34

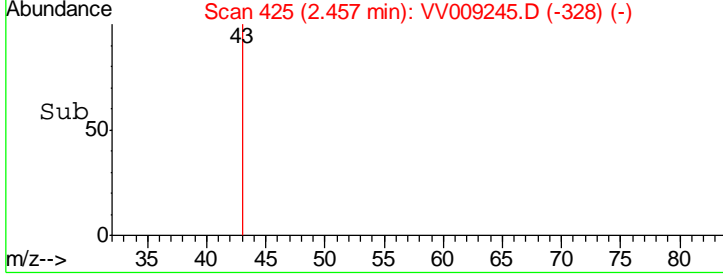
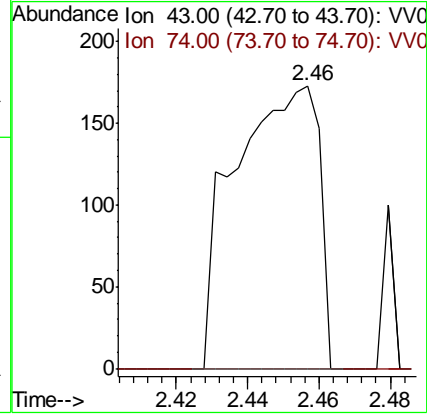
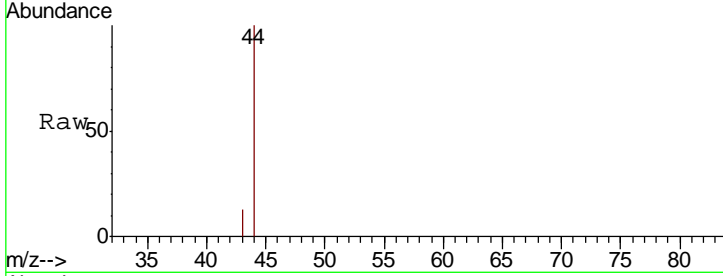
Tgt Ion	Resp	Lower	Upper
76	85		
76	100		
78	0.0	7.3	10.9#





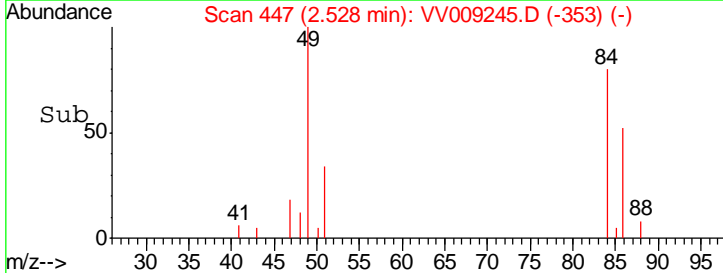
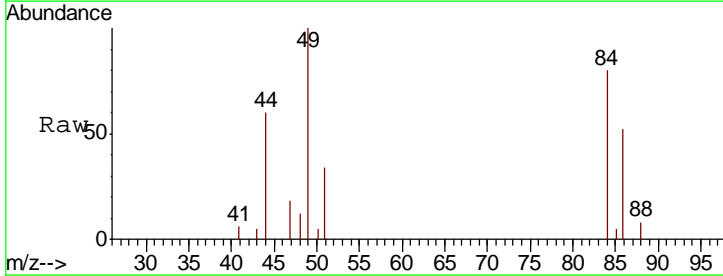
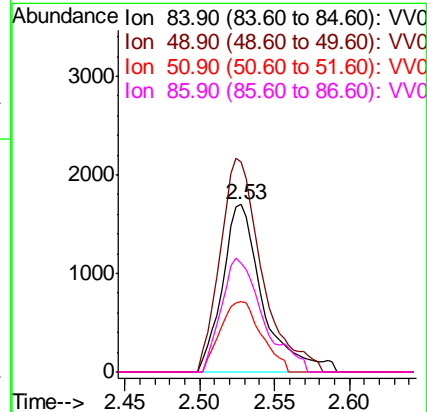
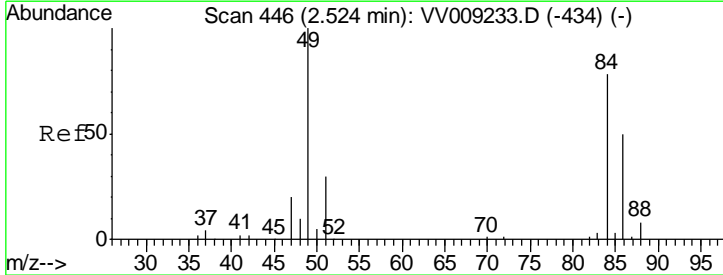
#18  
 Methyl Acetate  
 Concen: 0.384 ug/l  
 RT: 2.46 min Scan# 425  
 Delta R.T. 0.01 min  
 Lab File: VV009245.D  
 Acq: 23 Jan 2019 13:34

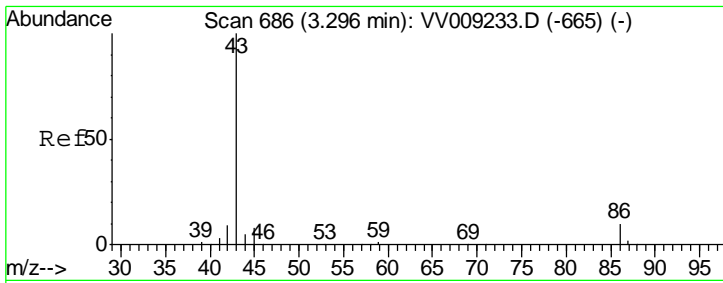
Tgt Ion	Resp	Lower	Upper
43	100		
74	0.0	19.7	29.5#



#20  
 Methylene Chloride  
 Concen: Below Cal  
 RT: 2.53 min Scan# 447  
 Delta R.T. 0.00 min  
 Lab File: VV009245.D  
 Acq: 23 Jan 2019 13:34

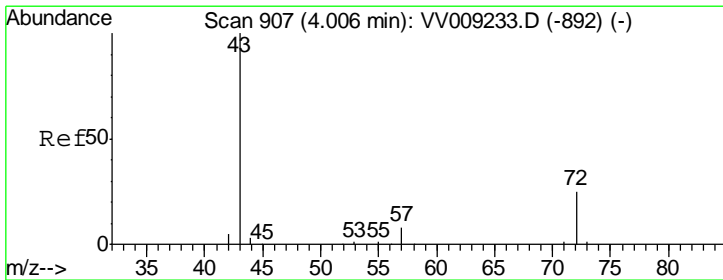
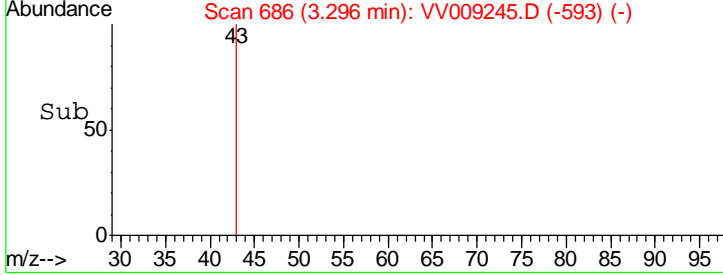
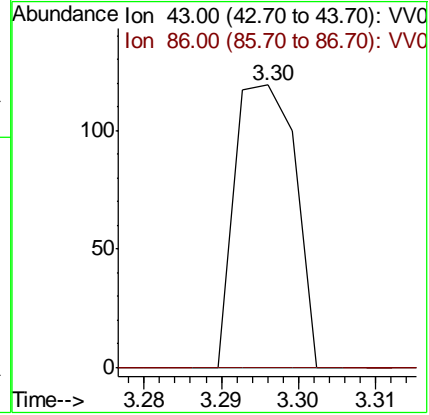
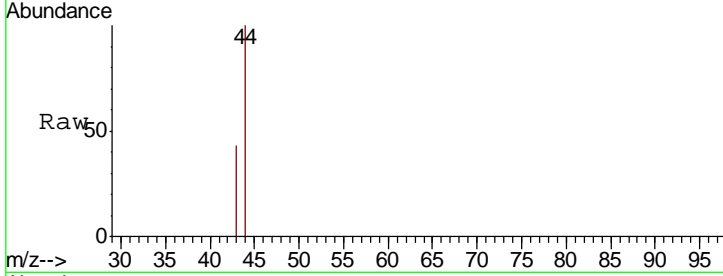
Tgt Ion	Resp	Lower	Upper
84	100		
49	125.7	102.0	153.0
51	42.1	30.9	46.3
86	65.5	51.0	76.6





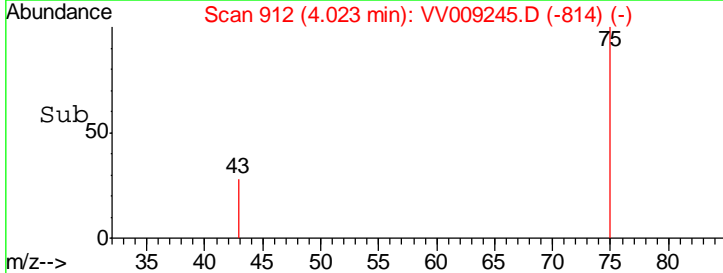
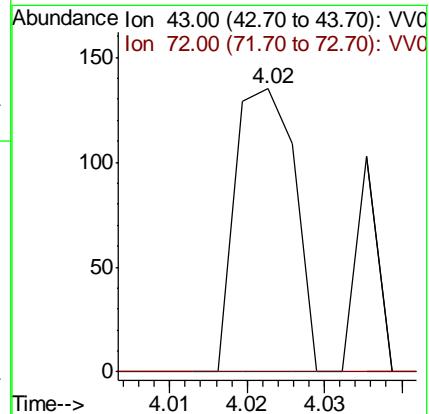
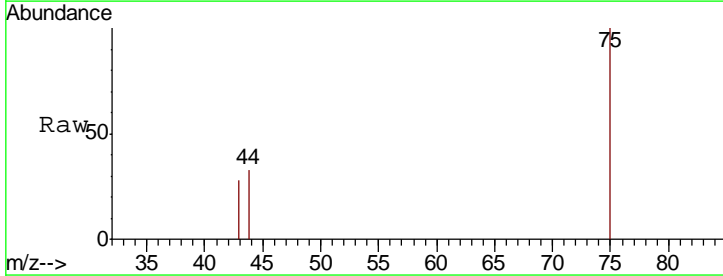
#23  
 Vinyl Acetate  
 Concen: 0.037 ug/l  
 RT: 3.30 min Scan# 686  
 Delta R.T. 0.00 min  
 Lab File: VV009245.D  
 Acq: 23 Jan 2019 13:34

Tgt Ion	Resp	Lower	Upper
43	100		
86	0.0	8.1	12.1#

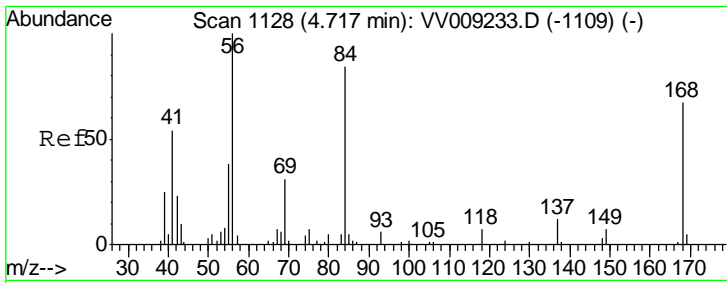


#25  
 2-Butanone  
 Concen: 0.230 ug/l  
 RT: 4.02 min Scan# 912  
 Delta R.T. 0.02 min  
 Lab File: VV009245.D  
 Acq: 23 Jan 2019 13:34

Tgt Ion	Resp	Lower	Upper
43	100		
72	0.0	20.2	30.4#

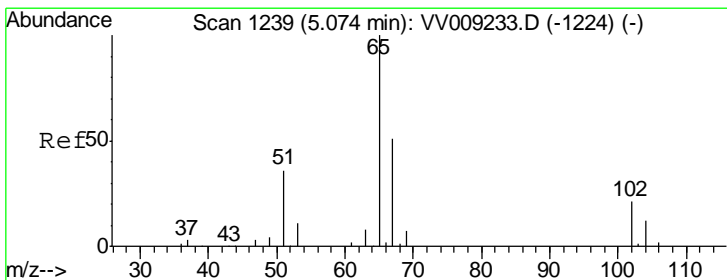
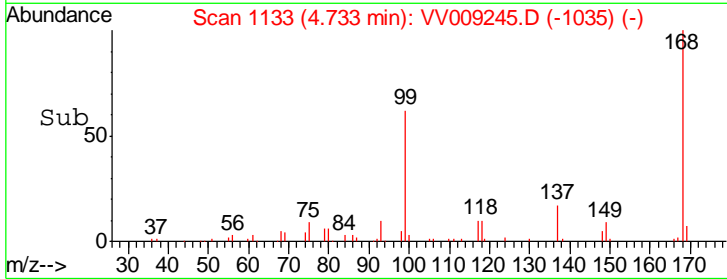
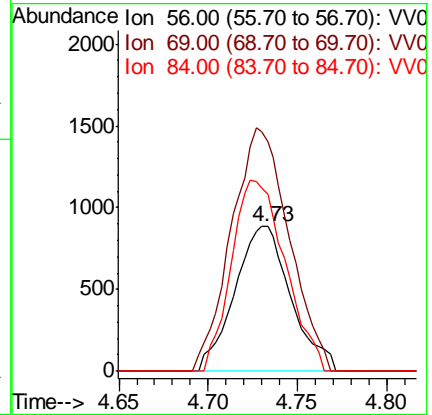
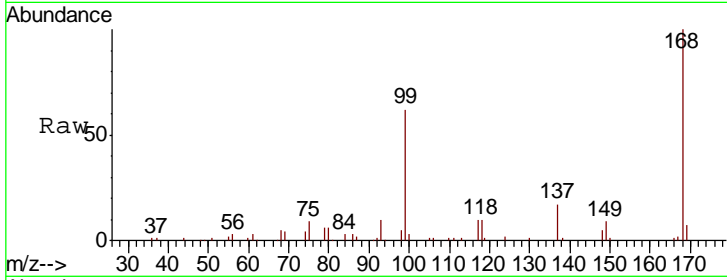






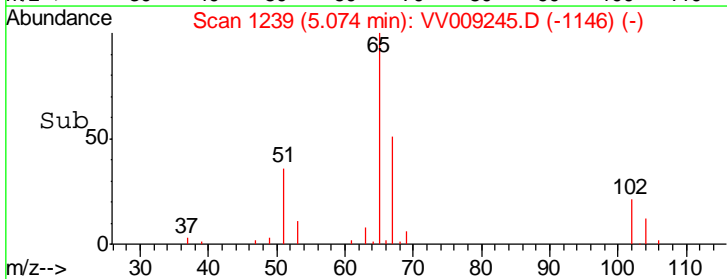
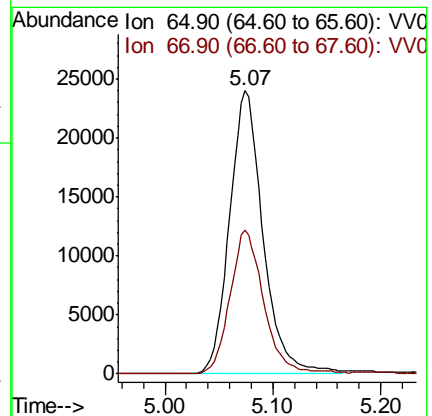
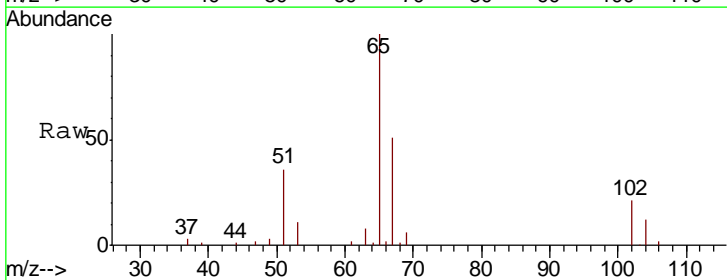
#31  
 Cyclohexane  
 Concen: 1.065 ug/l  
 RT: 4.73 min Scan# 1133  
 Delta R.T. 0.02 min  
 Lab File: VV009245.D  
 Acq: 23 Jan 2019 13:34

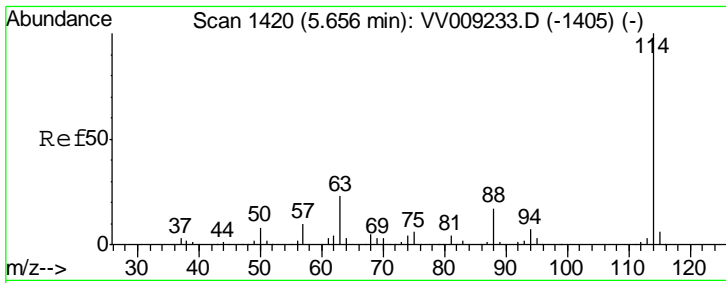
Tgt Ion	Resp	Lower	Upper
56	100		
69	158.0	25.1	37.7#
84	121.7	67.3	100.9#



#33  
 1,2-Dichloroethane-d4  
 Concen: 51.371 ug/l  
 RT: 5.07 min Scan# 1239  
 Delta R.T. 0.00 min  
 Lab File: VV009245.D  
 Acq: 23 Jan 2019 13:34

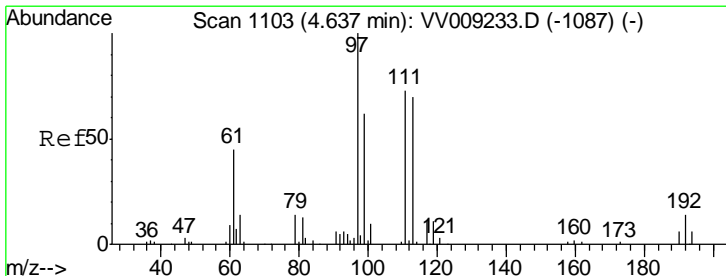
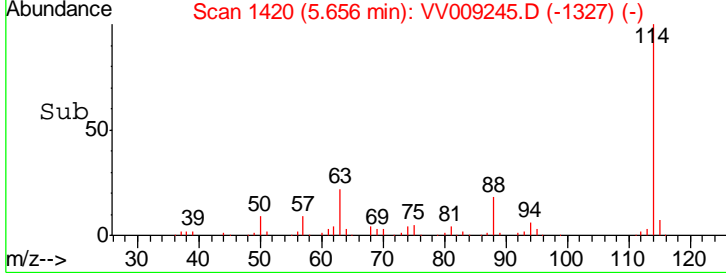
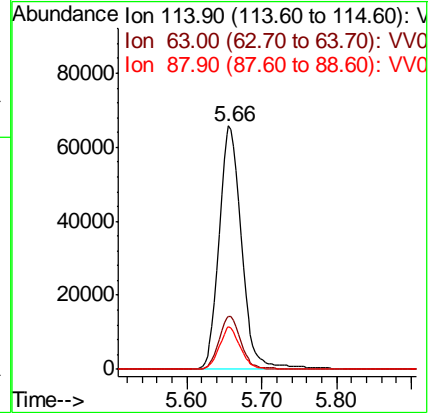
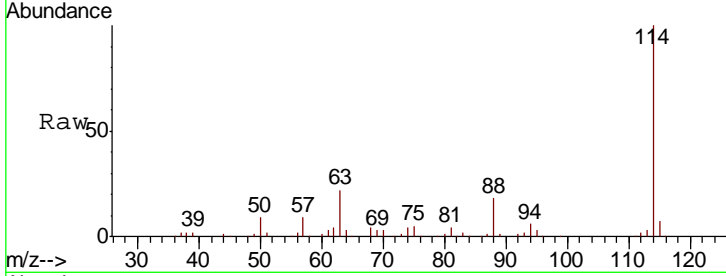
Tgt Ion	Resp	Lower	Upper
65	100		
67	51.4	0.0	102.8





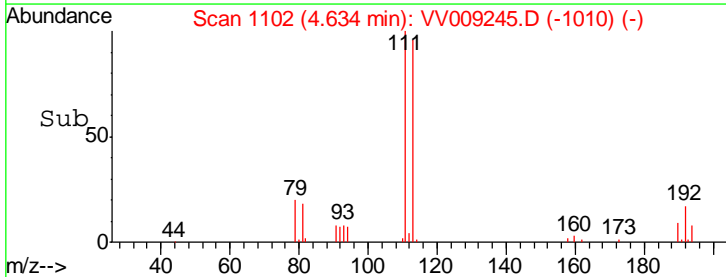
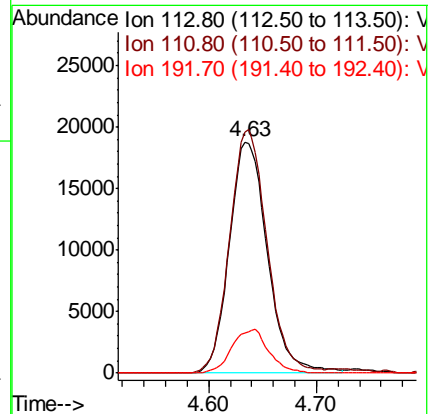
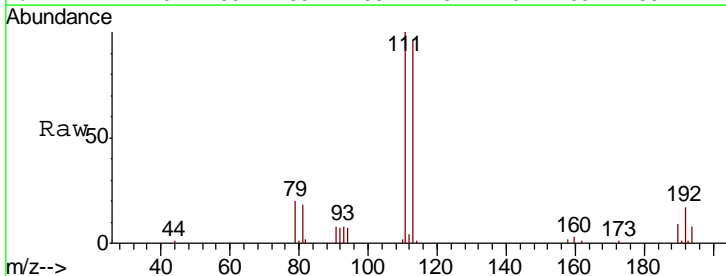
#34  
 1,4-Difluorobenzene  
 Concen: 50.000 ug/l  
 RT: 5.66 min Scan# 1420  
 Delta R.T. 0.00 min  
 Lab File: VV009245.D  
 Acq: 23 Jan 2019 13:34

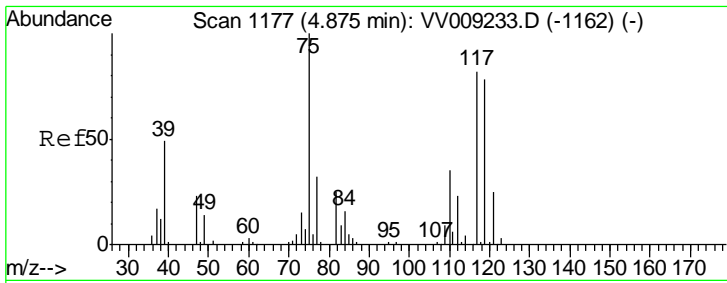
Tgt Ion	Resp	Lower	Upper
114	137917		
63	22.0	0.0	45.2
88	17.6	0.0	33.4



#35  
 Dibromofluoromethane  
 Concen: 51.556 ug/l  
 RT: 4.63 min Scan# 1102  
 Delta R.T. -0.00 min  
 Lab File: VV009245.D  
 Acq: 23 Jan 2019 13:34

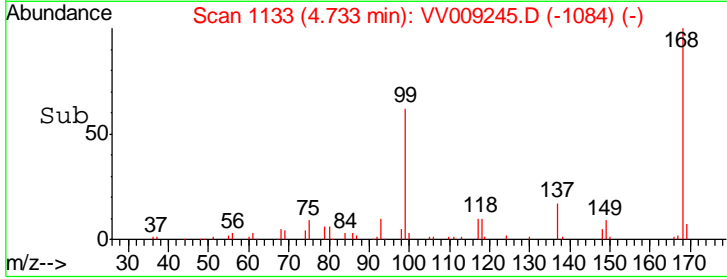
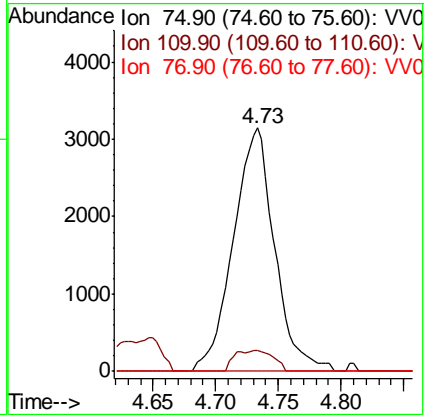
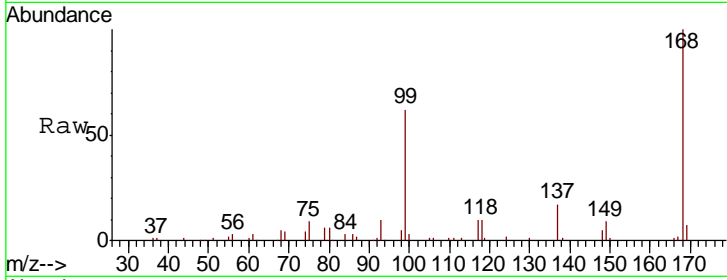
Tgt Ion	Resp	Lower	Upper
113	46269		
111	103.3	82.4	123.6
192	18.2	15.0	22.6





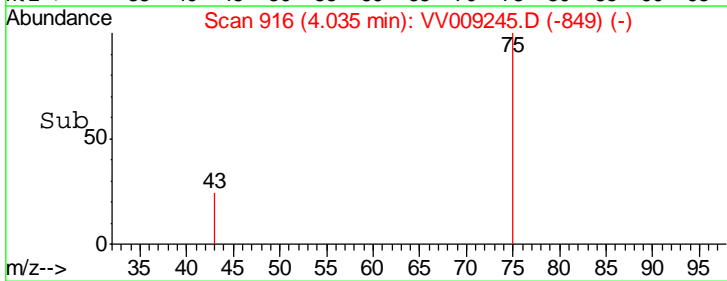
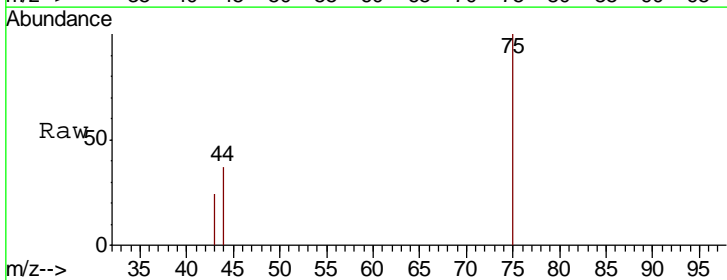
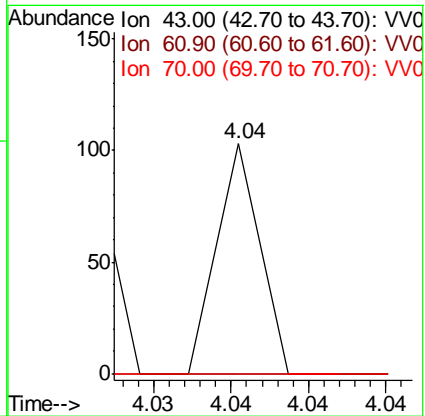
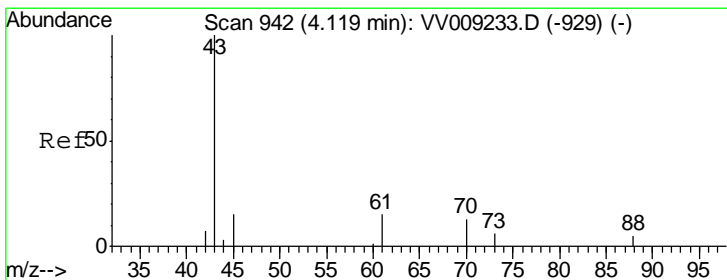
#36  
 1,1-Dichloropropene  
 Concen: 4.707 ug/l  
 RT: 4.73 min Scan# 1133  
 Delta R.T. -0.14 min  
 Lab File: VV009245.D  
 Acq: 23 Jan 2019 13:34

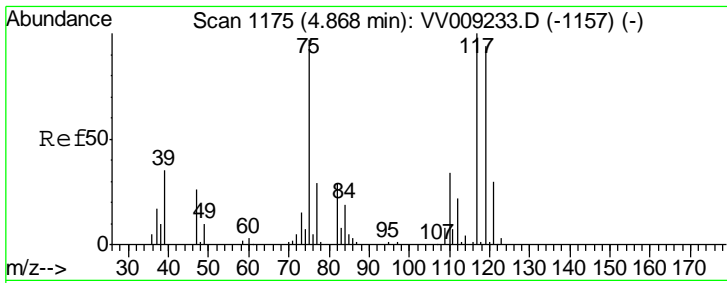
Tgt Ion	Resp	Lower	Upper
75	100		
110	2.9	17.5	52.5#
77	0.0	25.5	38.3#



#37  
 Ethyl Acetate  
 Concen: 0.034 ug/l  
 RT: 4.04 min Scan# 916  
 Delta R.T. -0.08 min  
 Lab File: VV009245.D  
 Acq: 23 Jan 2019 13:34

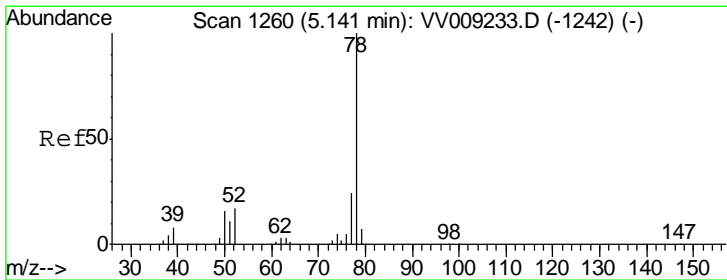
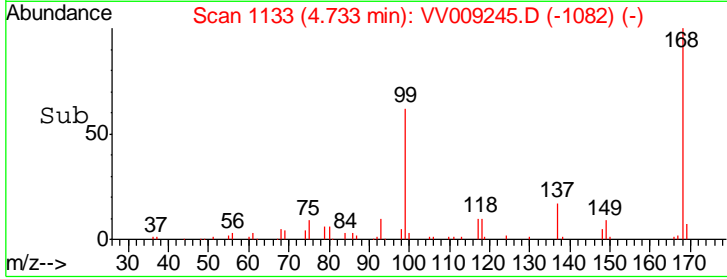
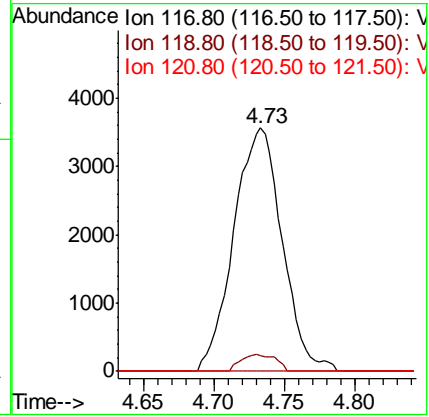
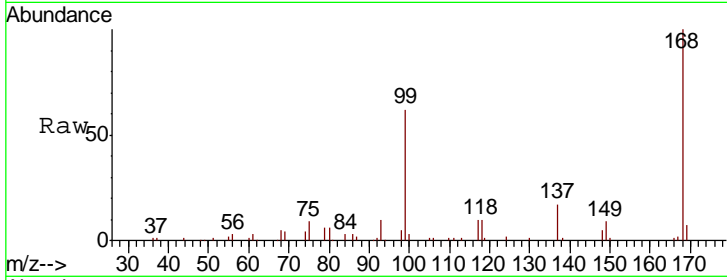
Tgt Ion	Resp	Lower	Upper
43	100		
61	0.0	12.0	18.0#
70	0.0	8.7	13.1#





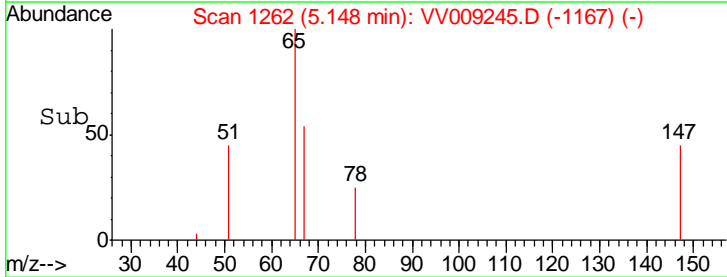
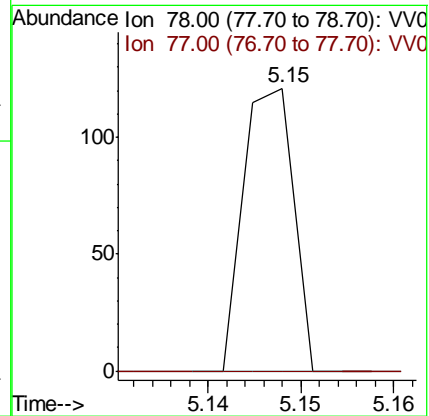
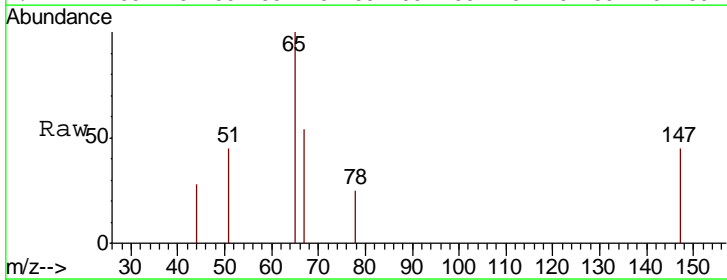
#38  
 Carbon Tetrachloride  
 Concen: 5.583 ug/l  
 RT: 4.73 min Scan# 1133  
 Delta R.T. -0.13 min  
 Lab File: VV009245.D  
 Acq: 23 Jan 2019 13:34

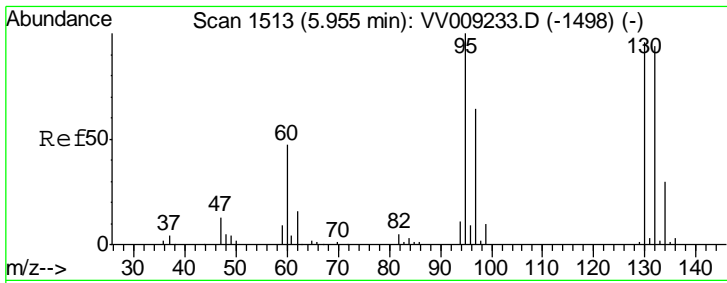
Tgt Ion	Resp	Lower	Upper
117	100		
119	6.6	75.4	113.2#
121	0.0	24.2	36.2#



#40  
 Benzene  
 Concen: 0.011 ug/l  
 RT: 5.15 min Scan# 1262  
 Delta R.T. 0.01 min  
 Lab File: VV009245.D  
 Acq: 23 Jan 2019 13:34

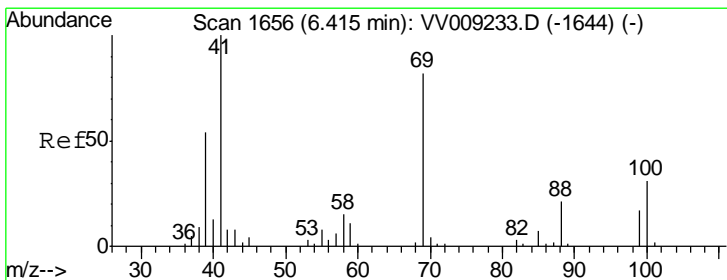
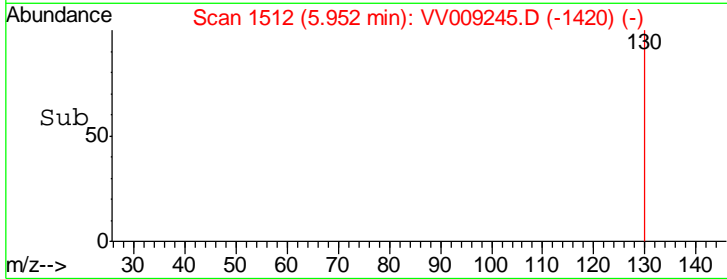
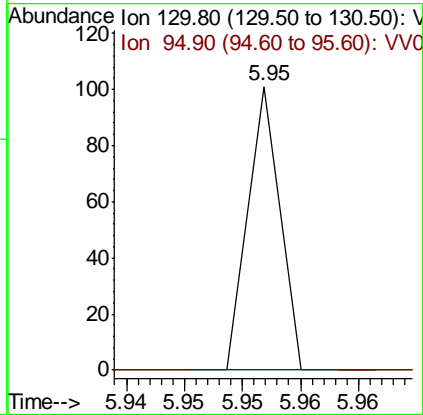
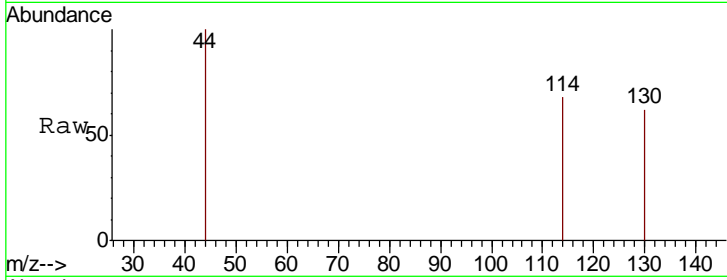
Tgt Ion	Resp	Lower	Upper
78	100		
77	0.0	19.4	29.2#





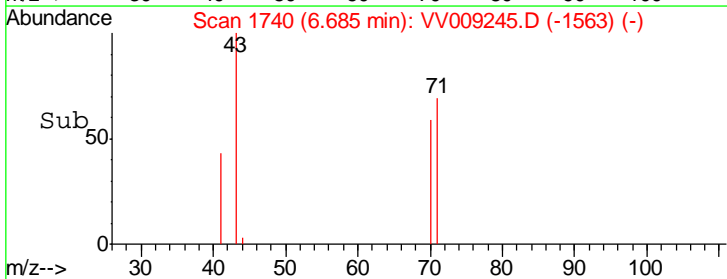
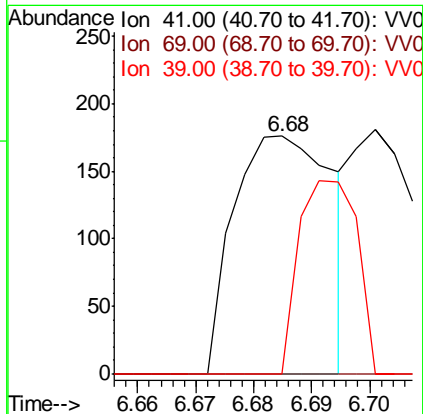
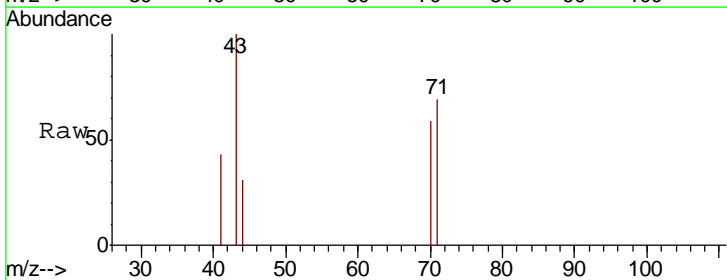
#44  
 Trichloroethene  
 Concen: 0.017 ug/l  
 RT: 5.95 min Scan# 1512  
 Delta R.T. -0.00 min  
 Lab File: VV009245.D  
 Acq: 23 Jan 2019 13:34

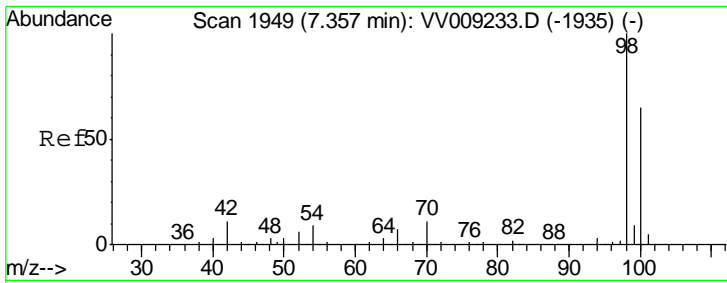
Tgt Ion	Resp	Lower	Upper
130	100	0.0	208.2
95	0.0	0.0	208.2



#48  
 Methyl methacrylate  
 Concen: 0.350 ug/l  
 RT: 6.68 min Scan# 1740  
 Delta R.T. 0.27 min  
 Lab File: VV009245.D  
 Acq: 23 Jan 2019 13:34

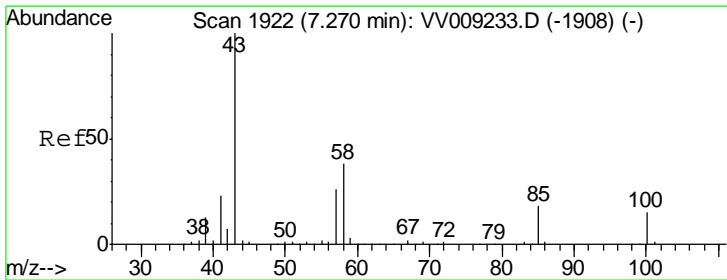
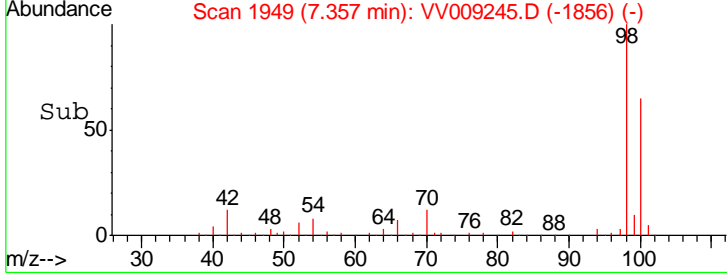
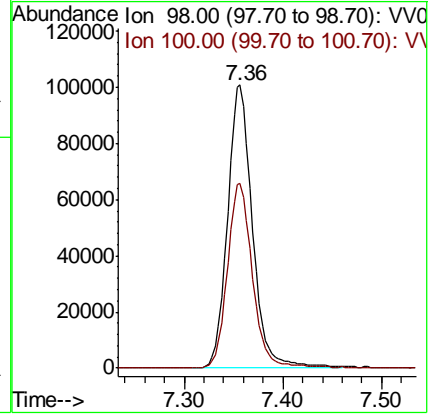
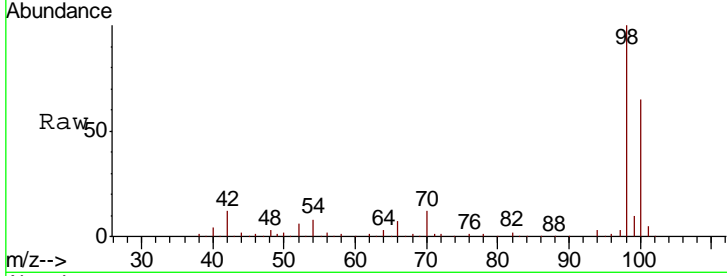
Tgt Ion	Resp	Lower	Upper
41	100	65.8	98.6#
69	0.0	43.4	65.0
39	48.3		





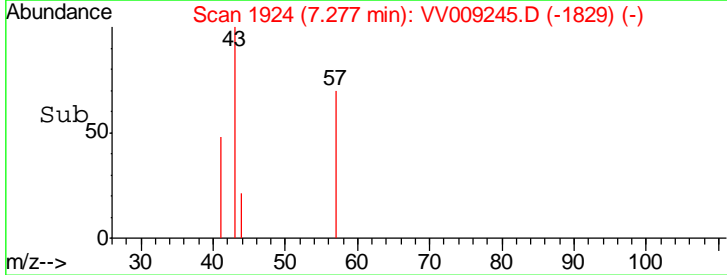
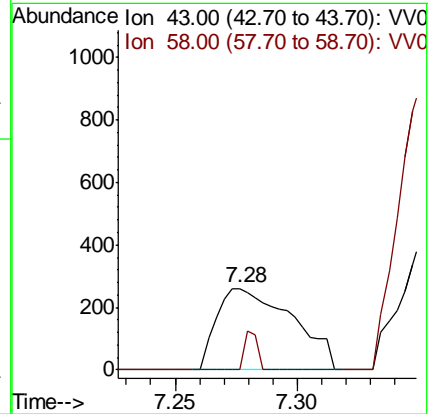
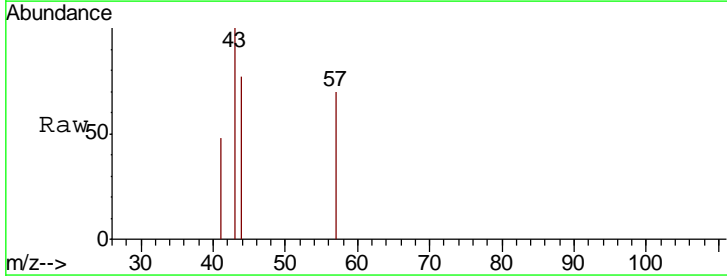
#50  
 Toluene-d8  
 Concen: 51.266 ug/l  
 RT: 7.36 min Scan# 1949  
 Delta R.T. 0.00 min  
 Lab File: VV009245.D  
 Acq: 23 Jan 2019 13:34

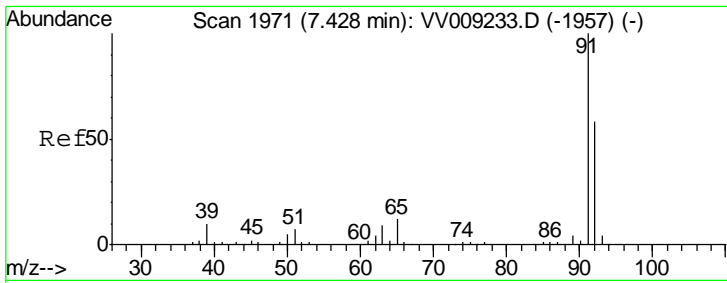
Tgt Ion: 98 Resp: 179066  
 Ion Ratio Lower Upper  
 98 100  
 100 65.7 52.2 78.2



#51  
 4-Methyl-2-Pentanone  
 Concen: 0.957 ug/l  
 RT: 7.28 min Scan# 1924  
 Delta R.T. 0.01 min  
 Lab File: VV009245.D  
 Acq: 23 Jan 2019 13:34

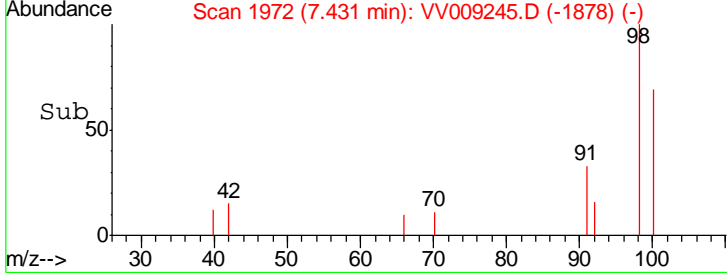
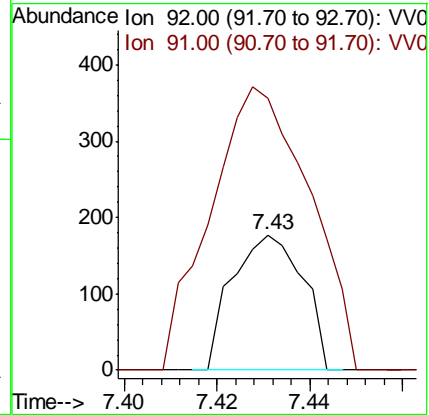
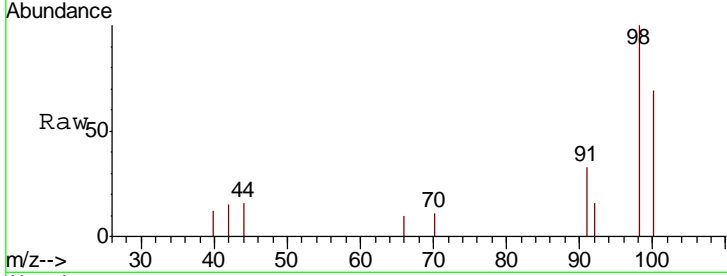
Tgt Ion: 43 Resp: 562  
 Ion Ratio Lower Upper  
 43 100  
 58 0.0 30.4 45.6#





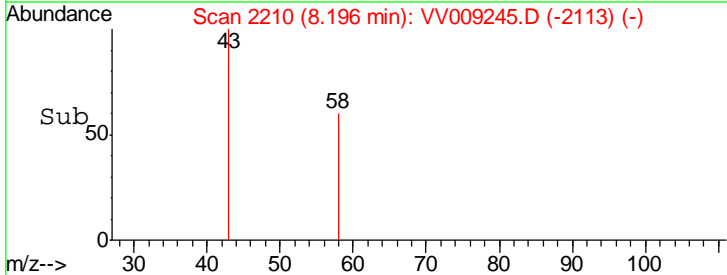
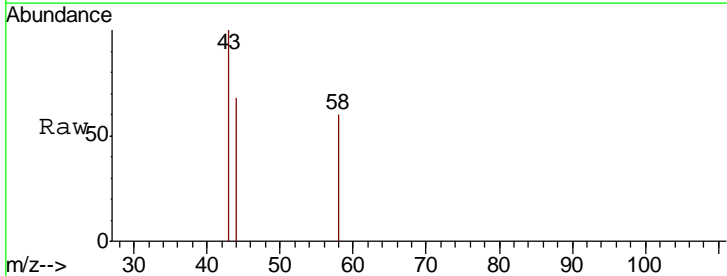
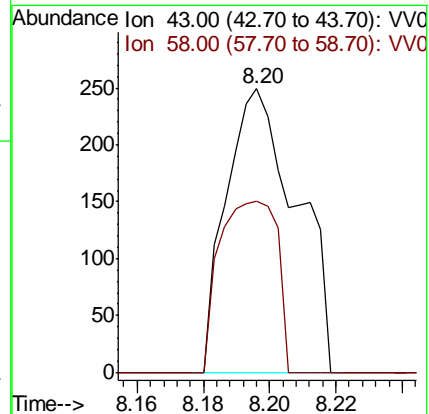
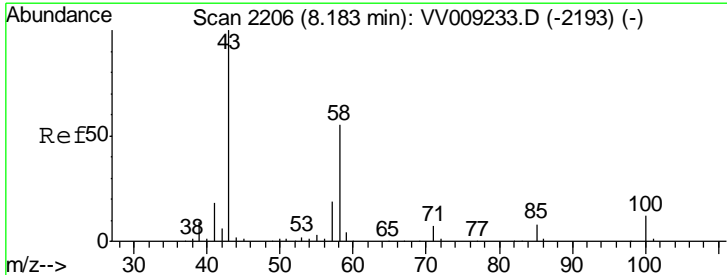
#52  
 Toluene  
 Concen: 0.069 ug/l  
 RT: 7.43 min Scan# 1972  
 Delta R.T. 0.00 min  
 Lab File: VV009245.D  
 Acq: 23 Jan 2019 13:34

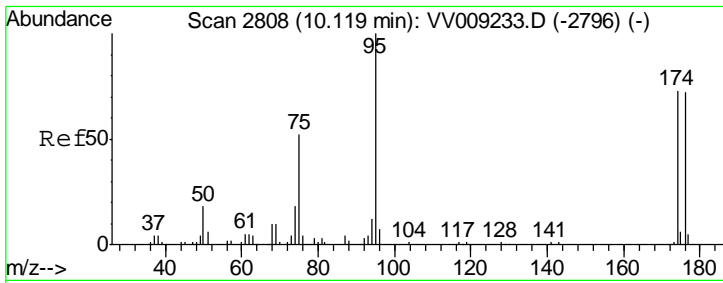
Tgt Ion: 92 Resp: 187  
 Ion Ratio Lower Upper  
 92 100  
 91 294.7 137.2 205.8#



#59  
 2-Hexanone  
 Concen: 0.866 ug/l  
 RT: 8.20 min Scan# 2210  
 Delta R.T. 0.01 min  
 Lab File: VV009245.D  
 Acq: 23 Jan 2019 13:34

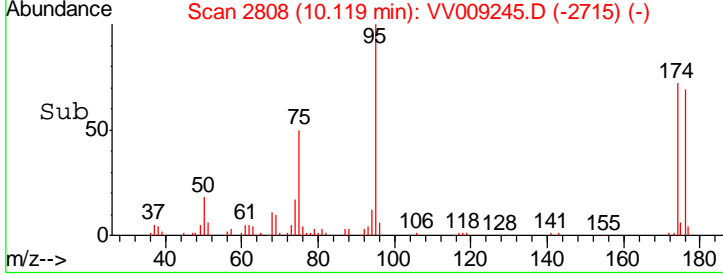
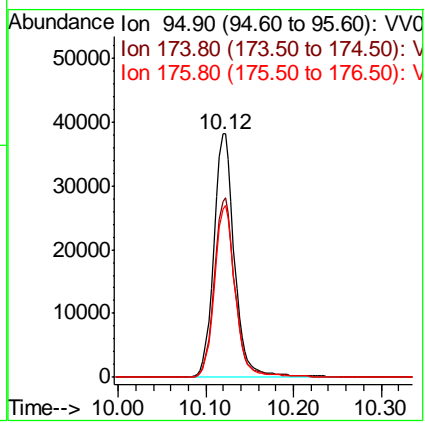
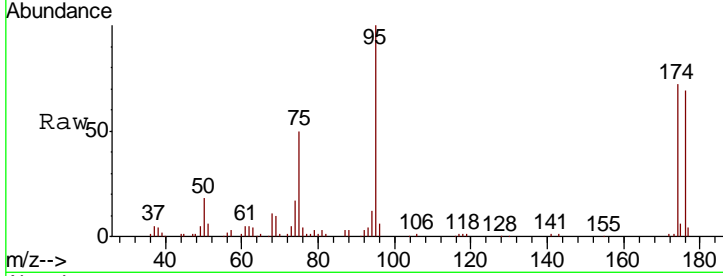
Tgt Ion: 43 Resp: 368  
 Ion Ratio Lower Upper  
 43 100  
 58 49.5 27.5 82.5





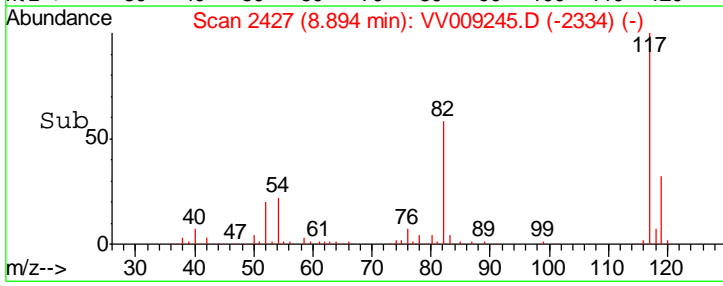
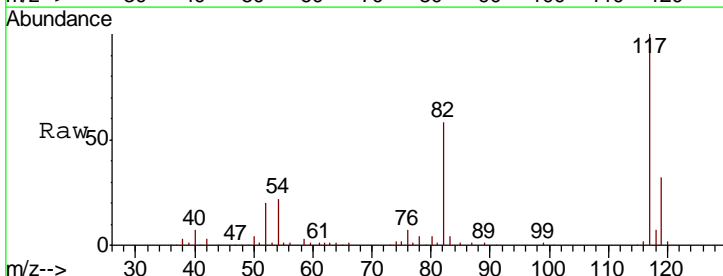
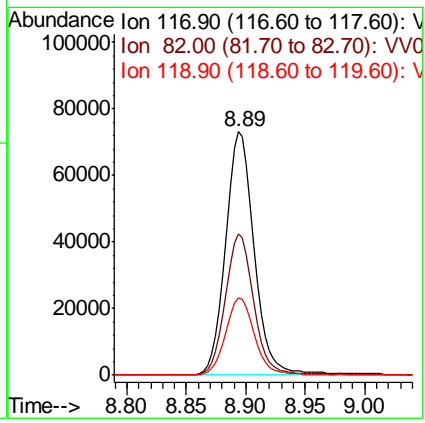
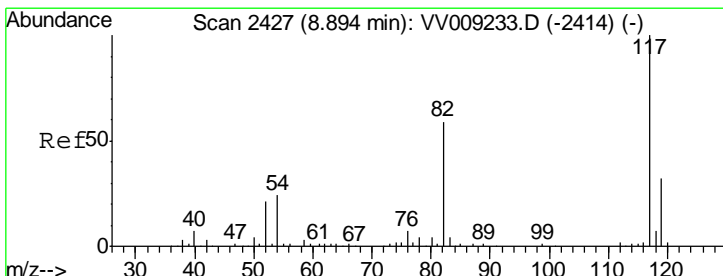
#62  
 4-Bromofluorobenzene  
 Concen: 47.573 ug/l  
 RT: 10.12 min Scan# 2808  
 Delta R.T. 0.00 min  
 Lab File: VV009245.D  
 Acq: 23 Jan 2019 13:34

Tgt Ion	Resp	Lower	Upper
95	62614		
174	73.0	0.0	148.2
176	70.1	0.0	143.0

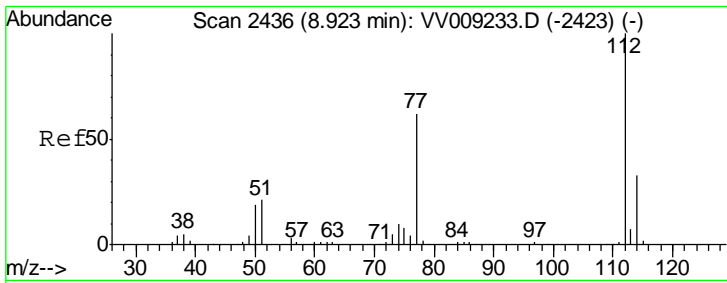


#63  
 Chlorobenzene-d5  
 Concen: 50.000 ug/l  
 RT: 8.89 min Scan# 2427  
 Delta R.T. 0.00 min  
 Lab File: VV009245.D  
 Acq: 23 Jan 2019 13:34

Tgt Ion	Resp	Lower	Upper
117	122101		
82	57.9	47.0	70.6
119	31.7	25.4	38.2

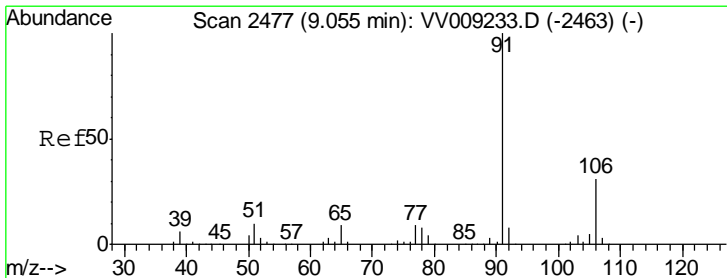
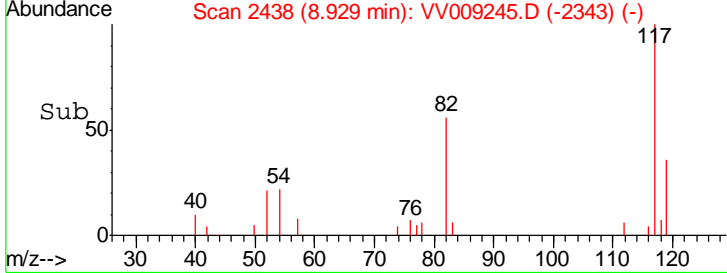
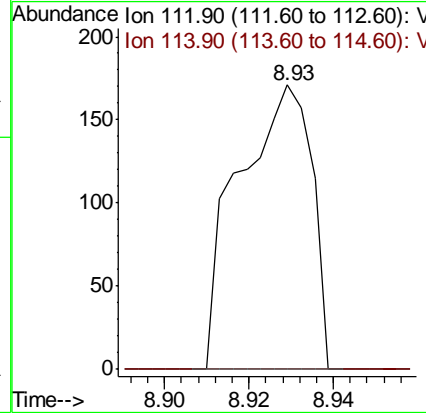
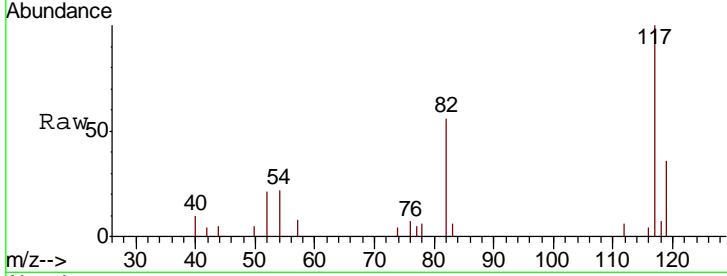






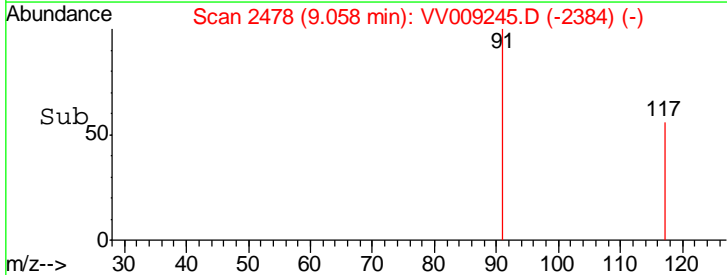
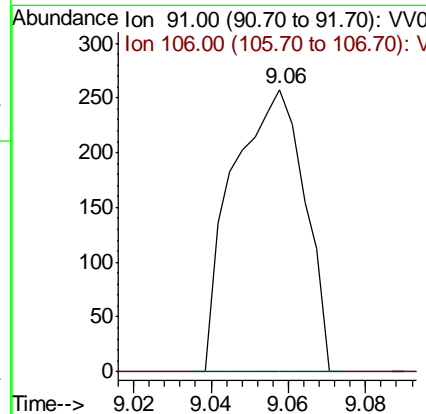
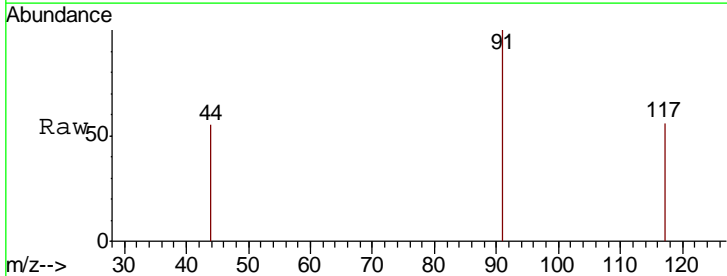
#65  
 Chlorobenzene  
 Concen: 0.072 ug/l  
 RT: 8.93 min Scan# 2438  
 Delta R.T. 0.01 min  
 Lab File: VV009245.D  
 Acq: 23 Jan 2019 13:34

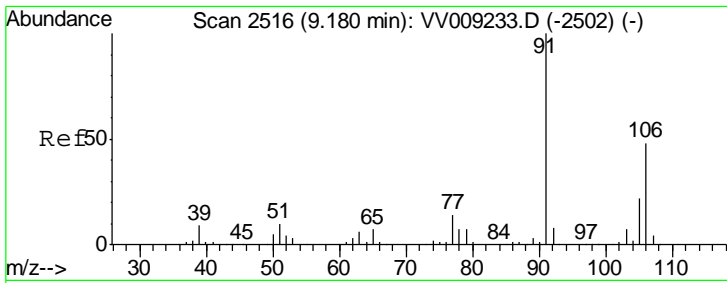
Tgt Ion: 112 Resp: 205  
 Ion Ratio Lower Upper  
 112 100  
 114 0.0 26.0 39.0#



#67  
 Ethyl Benzene  
 Concen: 0.066 ug/l  
 RT: 9.06 min Scan# 2478  
 Delta R.T. 0.00 min  
 Lab File: VV009245.D  
 Acq: 23 Jan 2019 13:34

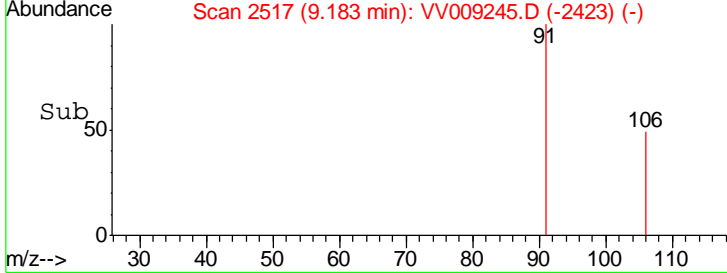
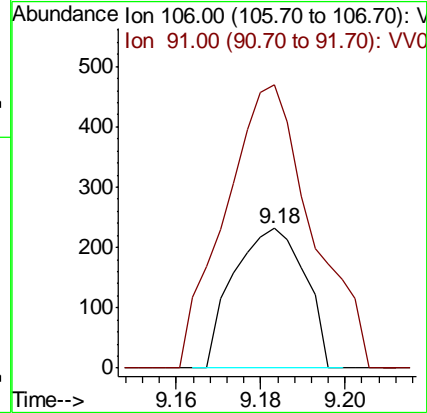
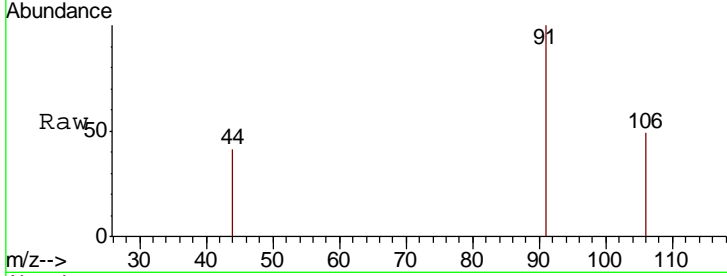
Tgt Ion: 91 Resp: 333  
 Ion Ratio Lower Upper  
 91 100  
 106 0.0 24.6 37.0#





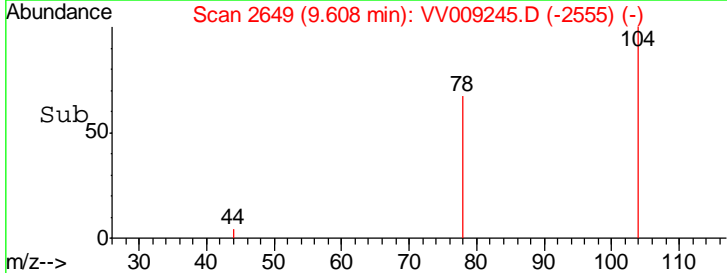
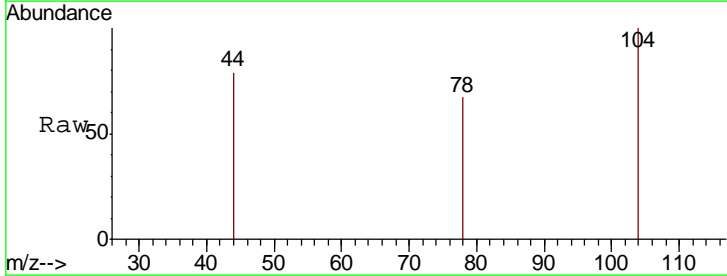
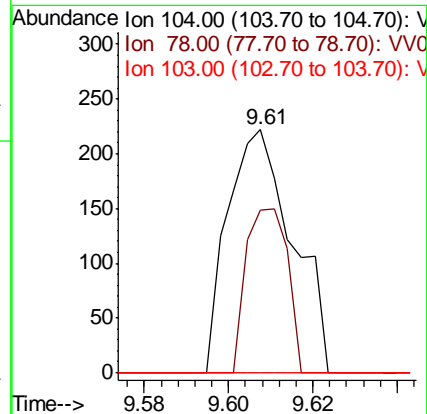
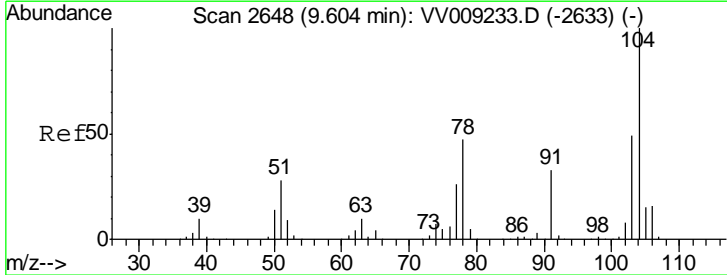
#68  
 m/p-Xylenes  
 Concen: 0.142 ug/l  
 RT: 9.18 min Scan# 2517  
 Delta R.T. 0.00 min  
 Lab File: VV009245.D  
 Acq: 23 Jan 2019 13:34

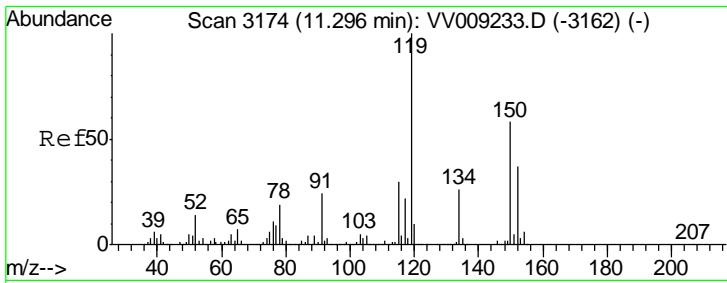
Tgt Ion:106 Resp: 273  
 Ion Ratio Lower Upper  
 106 100  
 91 245.1 167.1 250.7



#70  
 Styrene  
 Concen: 0.084 ug/l  
 RT: 9.61 min Scan# 2649  
 Delta R.T. 0.00 min  
 Lab File: VV009245.D  
 Acq: 23 Jan 2019 13:34

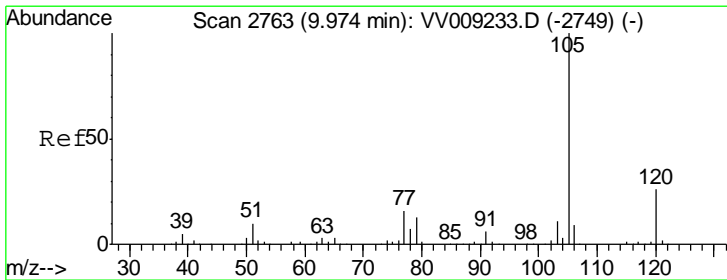
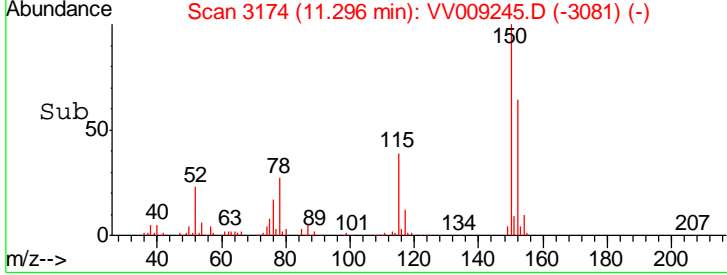
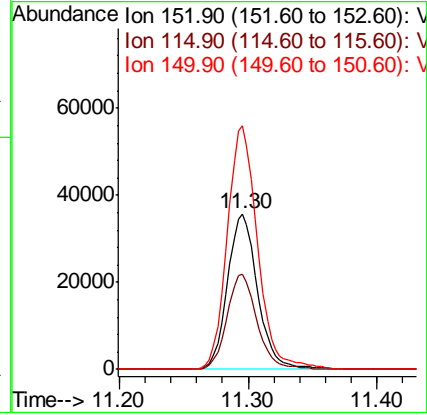
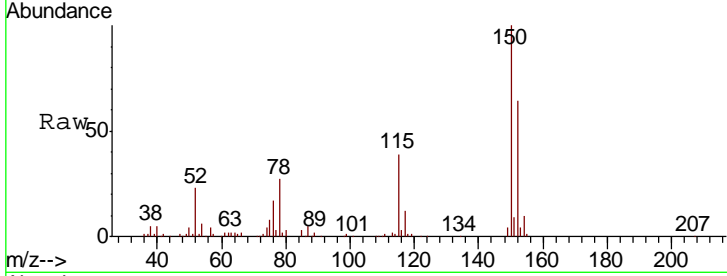
Tgt Ion:104 Resp: 238  
 Ion Ratio Lower Upper  
 104 100  
 78 43.3 43.1 64.7  
 103 0.0 43.8 65.8#





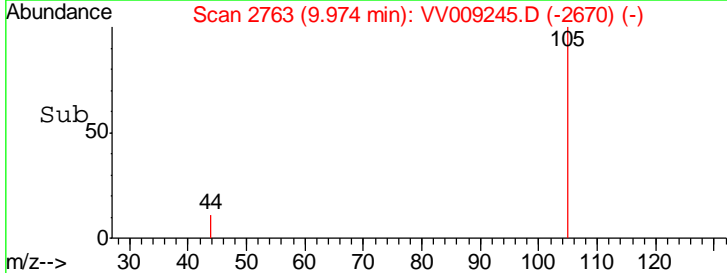
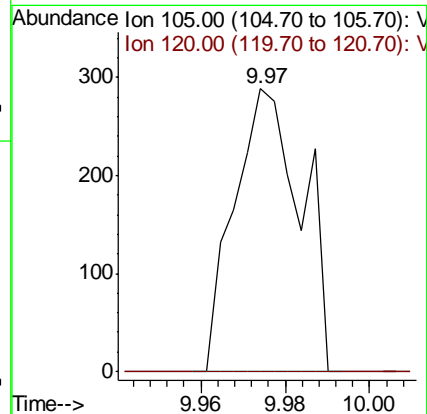
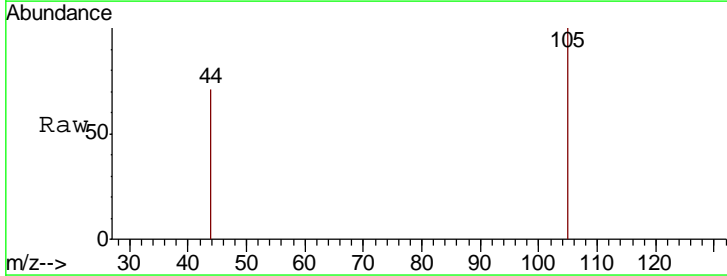
#72  
 1,4-Dichlorobenzene-d4  
 Concen: 50.000 ug/l  
 RT: 11.30 min Scan# 3174  
 Delta R.T. 0.00 min  
 Lab File: VV009245.D  
 Acq: 23 Jan 2019 13:34

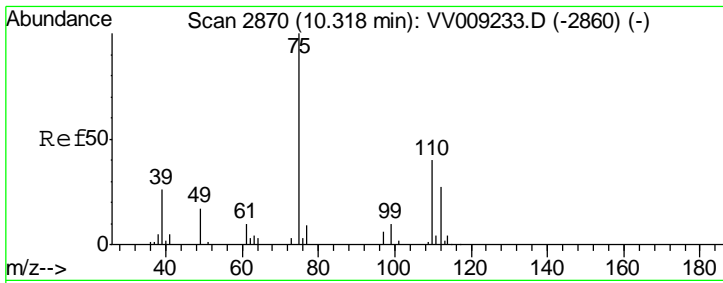
Tgt Ion	Resp	Lower	Upper
152	100		
115	61.2	45.0	134.8
150	158.1	0.0	346.4



#73  
 Isopropylbenzene  
 Concen: 0.067 ug/l  
 RT: 9.97 min Scan# 2763  
 Delta R.T. 0.00 min  
 Lab File: VV009245.D  
 Acq: 23 Jan 2019 13:34

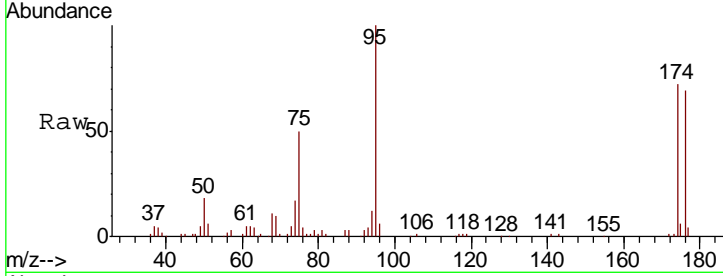
Tgt Ion	Resp	Lower	Upper
105	100		
120	0.0	12.9	38.7#



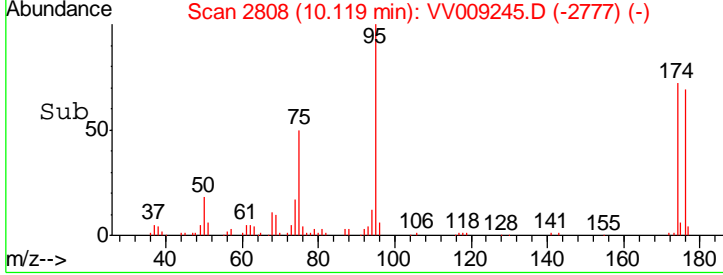
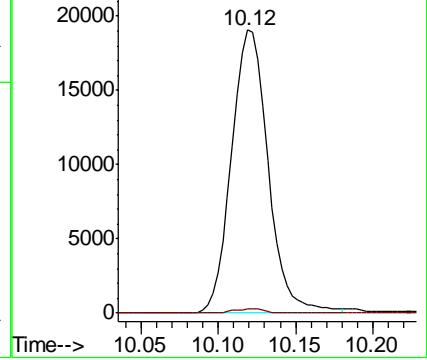


#76  
 1,2,3-Trichloropropane  
 Concen: 49.565 ug/l  
 RT: 10.12 min Scan# 2808  
 Delta R.T. -0.20 min  
 Lab File: VV009245.D  
 Acq: 23 Jan 2019 13:34

Tgt Ion	Resp	Lower	Upper
75	31375		
77	1.1	24.6	73.8#

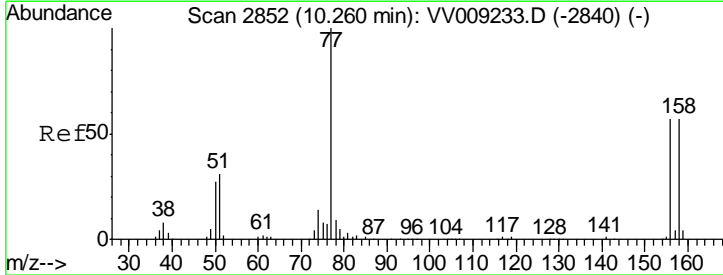


Abundance Ion 74.90 (74.60 to 75.60): VV0  
 Ion 77.00 (76.70 to 77.70): VV0

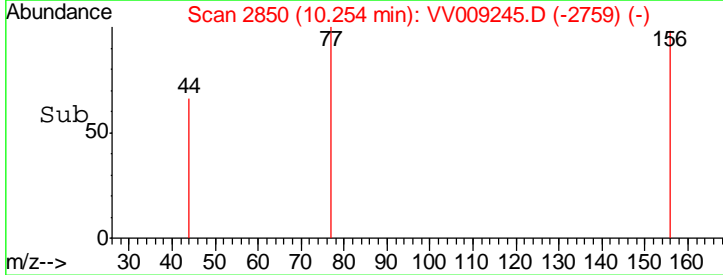
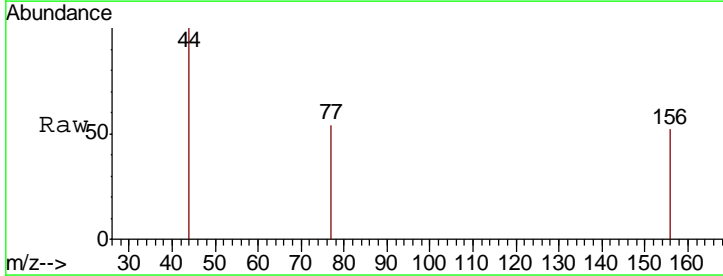
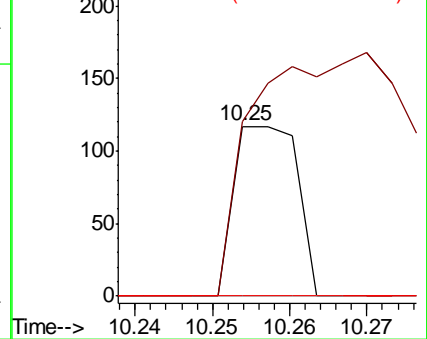


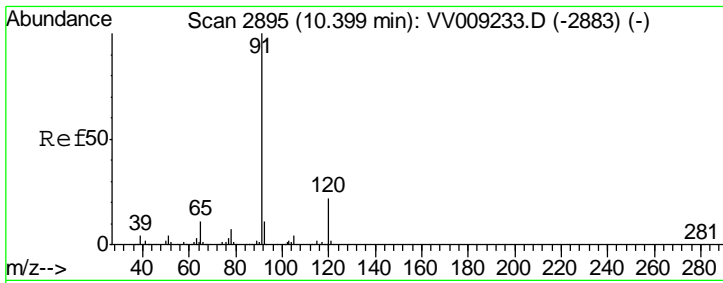
#77  
 Bromobenzene  
 Concen: 0.066 ug/l  
 RT: 10.25 min Scan# 2850  
 Delta R.T. -0.01 min  
 Lab File: VV009245.D  
 Acq: 23 Jan 2019 13:34

Tgt Ion	Resp	Lower	Upper
156	67		
77	334.3	86.0	258.0#
158	0.0	49.8	149.3#



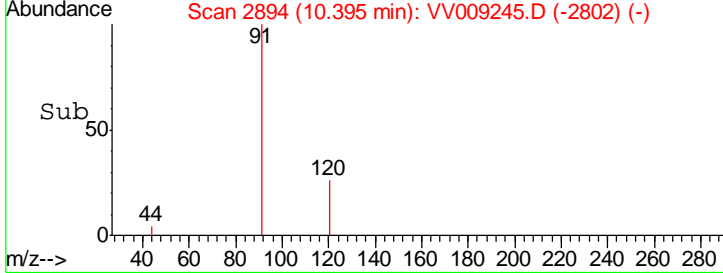
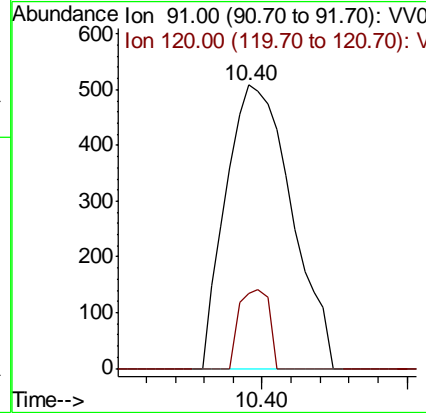
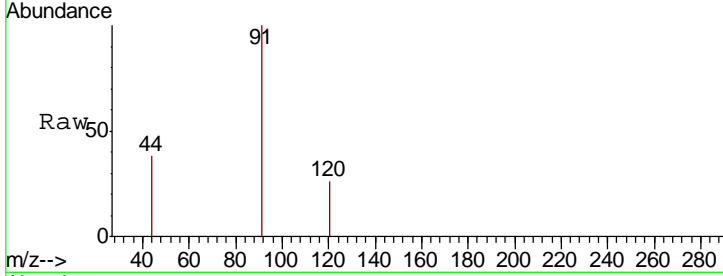
Abundance Ion 155.80 (155.50 to 156.50): V  
 Ion 77.00 (76.70 to 77.70): VV0  
 Ion 157.80 (157.50 to 158.50): V





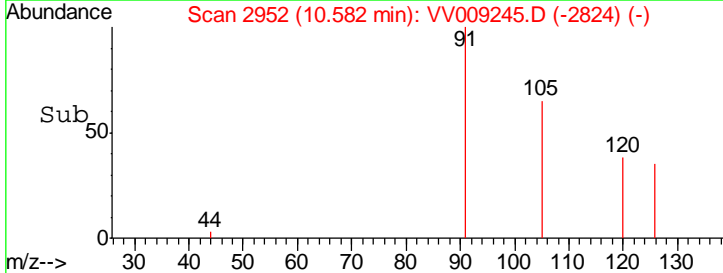
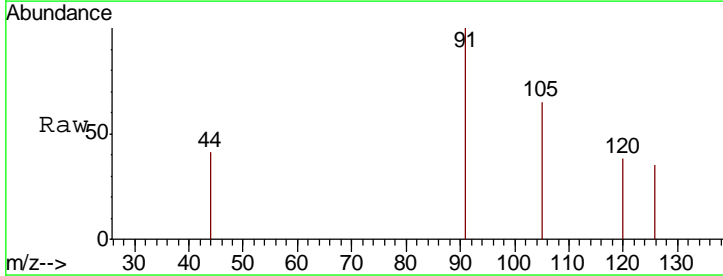
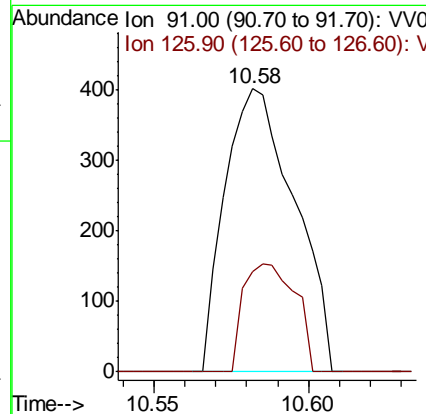
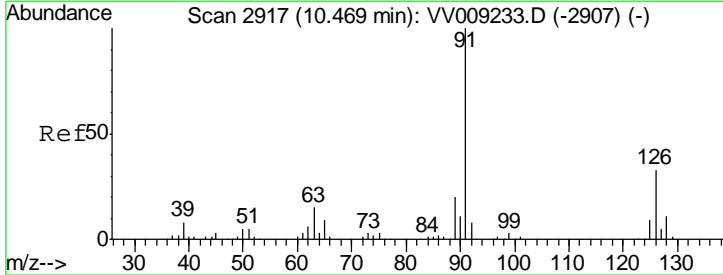
#78  
 n-propylbenzene  
 Concen: 0.141 ug/l  
 RT: 10.40 min Scan# 2894  
 Delta R.T. -0.00 min  
 Lab File: VV009245.D  
 Acq: 23 Jan 2019 13:34

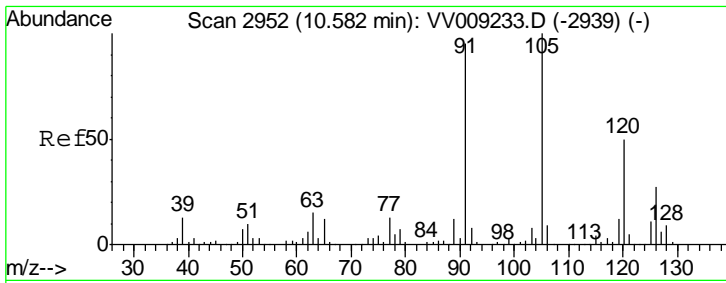
Tgt Ion	Resp	Ion	Ratio	Lower	Upper
91	799	91	100		
120		120	12.5	11.5	34.4



#79  
 2-Chlorotoluene  
 Concen: 0.184 ug/l  
 RT: 10.58 min Scan# 2952  
 Delta R.T. 0.11 min  
 Lab File: VV009245.D  
 Acq: 23 Jan 2019 13:34

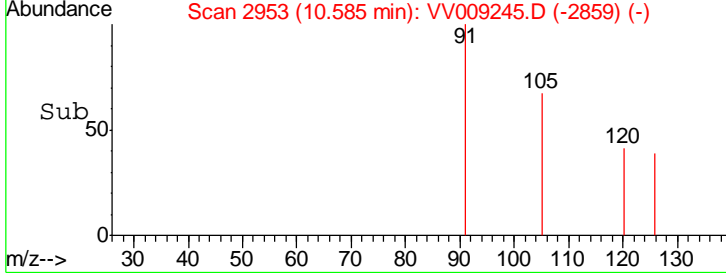
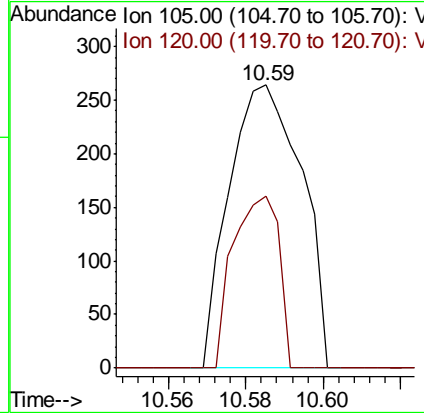
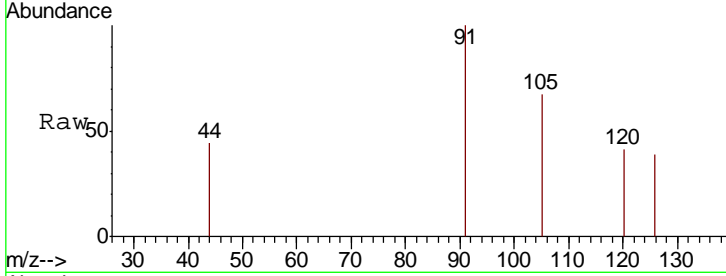
Tgt Ion	Resp	Ion	Ratio	Lower	Upper
91	628	91	100		
126		126	28.2	16.2	48.6





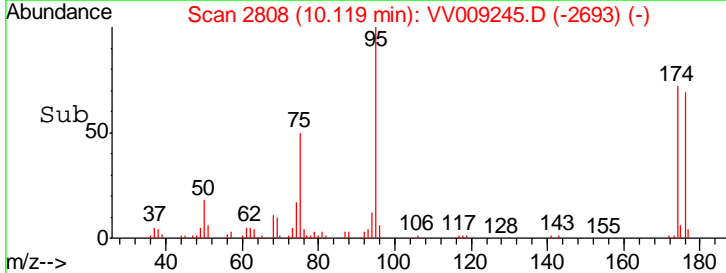
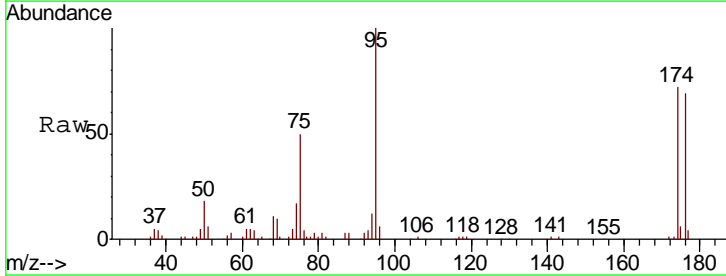
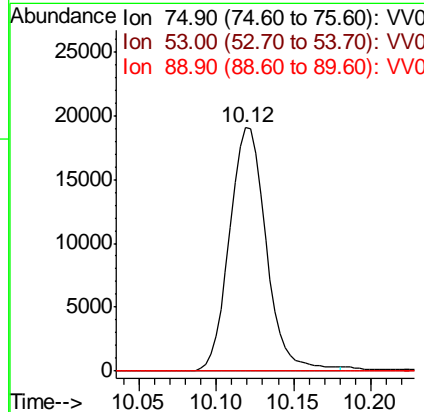
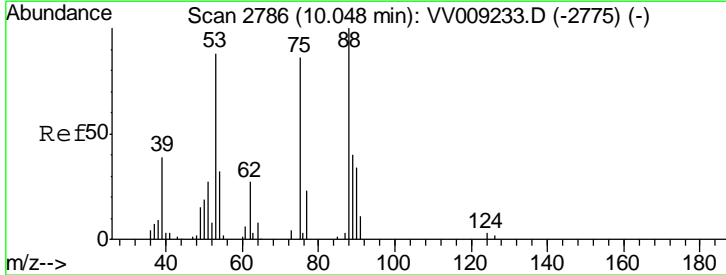
#80  
 1,3,5-Trimethylbenzene  
 Concen: 0.086 ug/l  
 RT: 10.59 min Scan# 2953  
 Delta R.T. 0.00 min  
 Lab File: VV009245.D  
 Acq: 23 Jan 2019 13:34

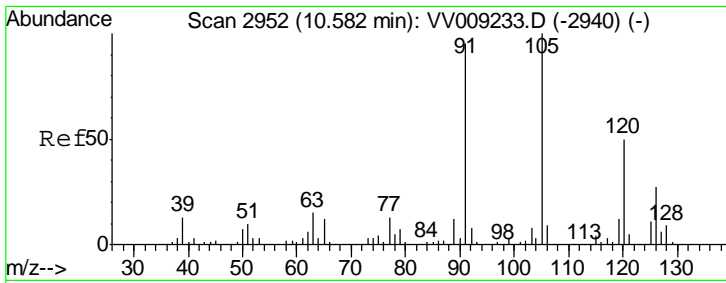
Tgt Ion	Resp	Lower	Upper
105	344		
105	100		
120	38.4	24.3	73.0



#81  
 trans-1,4-Dichloro-2-butene  
 Concen: 140.264 ug/l  
 RT: 10.12 min Scan# 2808  
 Delta R.T. 0.07 min  
 Lab File: VV009245.D  
 Acq: 23 Jan 2019 13:34

Tgt Ion	Resp	Lower	Upper
75	31375		
75	100		
53	0.0	82.1	123.1#
89	0.0	36.2	54.4#

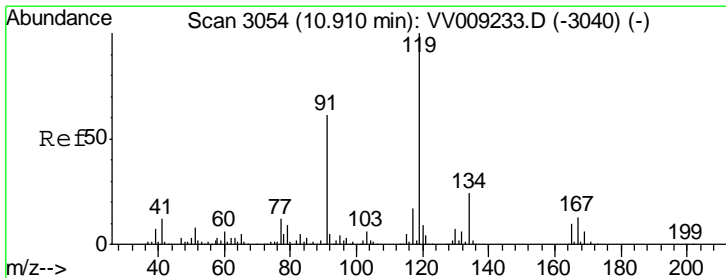
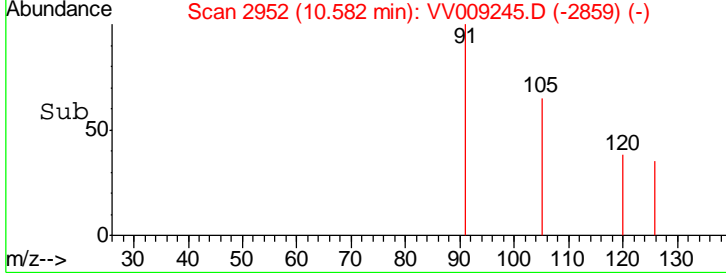
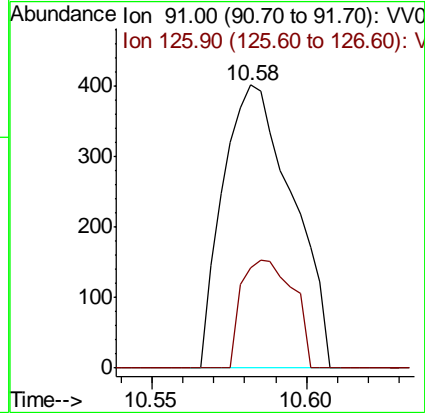
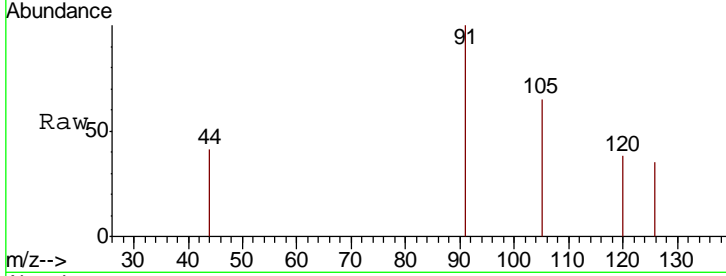




#82  
 4-Chlorotoluene  
 Concen: 0.156 ug/l  
 RT: 10.58 min Scan# 2952  
 Delta R.T. 0.00 min  
 Lab File: VV009245.D  
 Acq: 23 Jan 2019 13:34

Tgt Ion: 91 Resp: 628

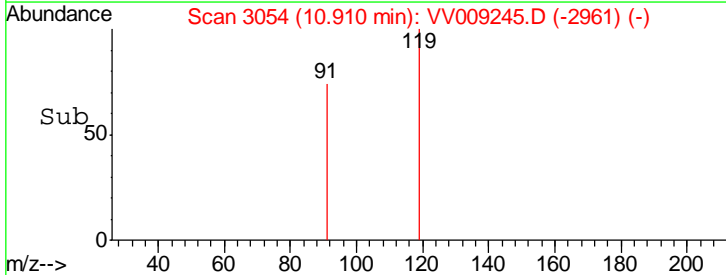
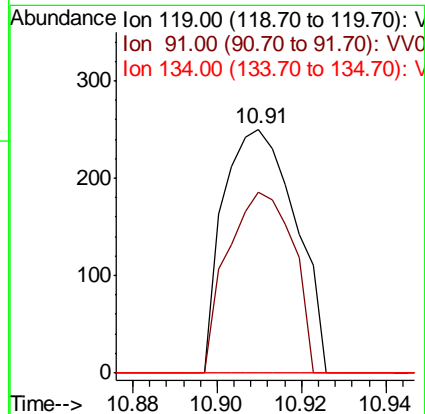
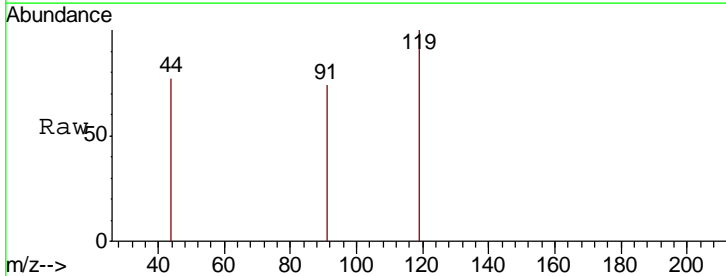
Ion	Ratio	Lower	Upper
91	100		
126	28.2	14.3	42.9

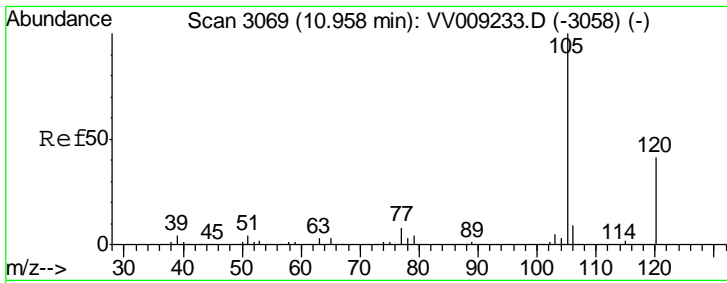


#83  
 tert-Butylbenzene  
 Concen: 0.078 ug/l  
 RT: 10.91 min Scan# 3054  
 Delta R.T. 0.00 min  
 Lab File: VV009245.D  
 Acq: 23 Jan 2019 13:34

Tgt Ion: 119 Resp: 297

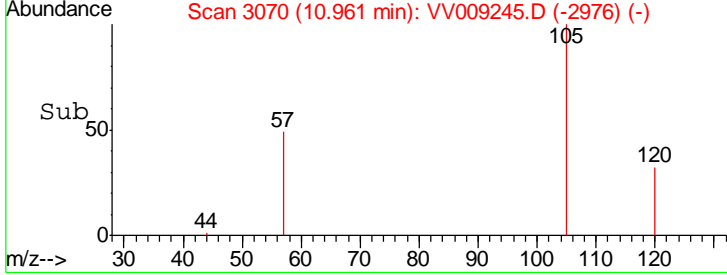
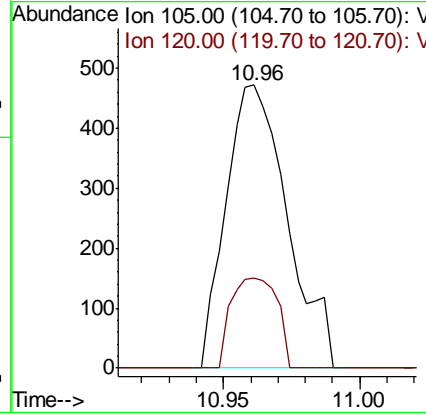
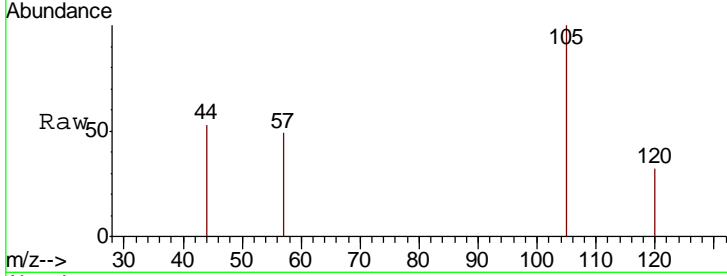
Ion	Ratio	Lower	Upper
119	100		
91	67.3	30.0	90.1
134	0.0	11.9	35.7#





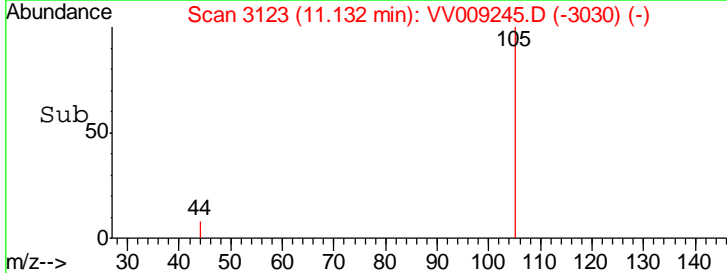
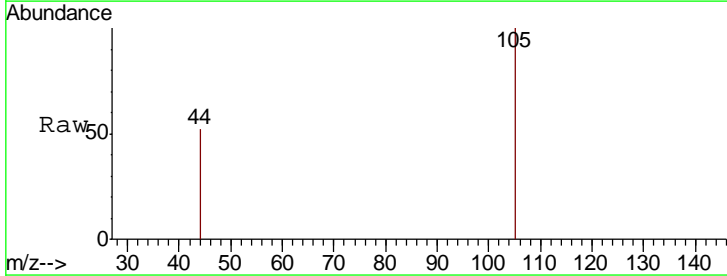
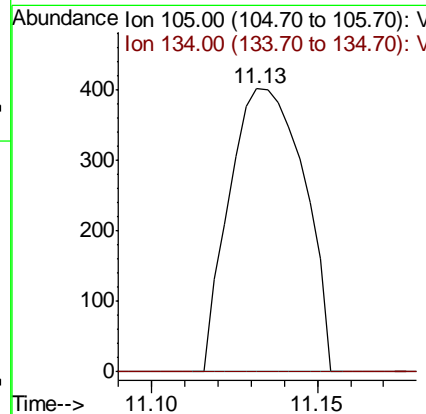
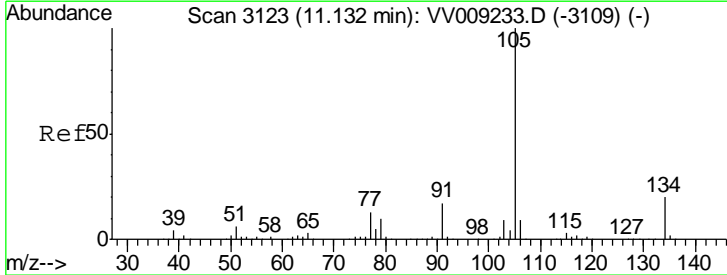
#84  
 1,2,4-Trimethylbenzene  
 Concen: 0.183 ug/l  
 RT: 10.96 min Scan# 3070  
 Delta R.T. 0.00 min  
 Lab File: VV009245.D  
 Acq: 23 Jan 2019 13:34

Tgt Ion:105 Resp: 739  
 Ion Ratio Lower Upper  
 105 100  
 120 24.0 22.6 67.7

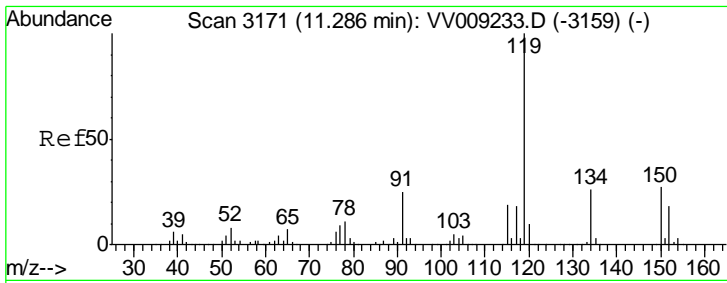


#85  
 sec-Butylbenzene  
 Concen: 0.126 ug/l  
 RT: 11.13 min Scan# 3123  
 Delta R.T. 0.00 min  
 Lab File: VV009245.D  
 Acq: 23 Jan 2019 13:34

Tgt Ion:105 Resp: 629  
 Ion Ratio Lower Upper  
 105 100  
 134 0.0 10.1 30.3#

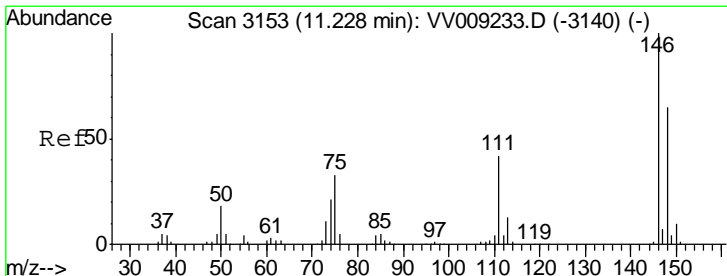
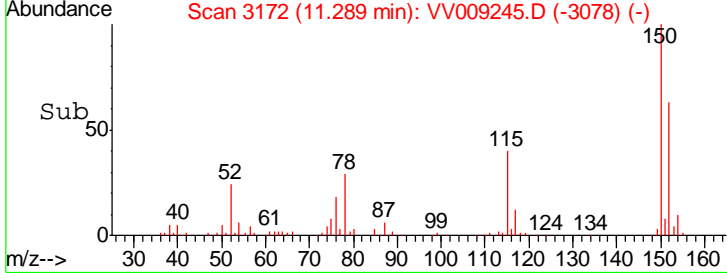
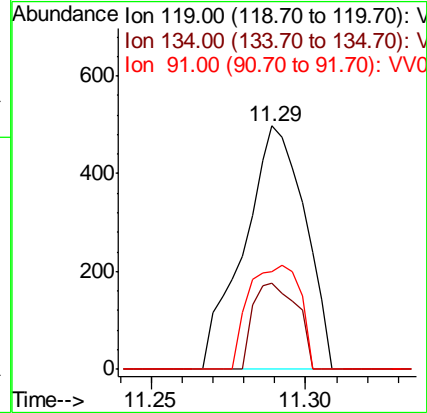
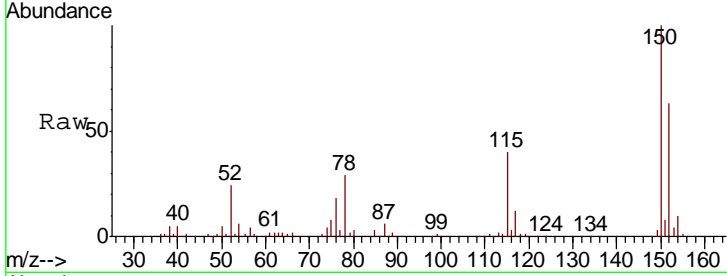






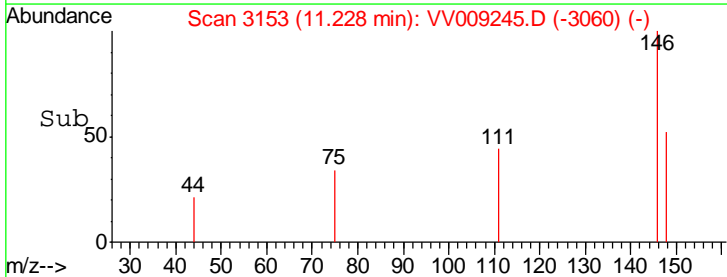
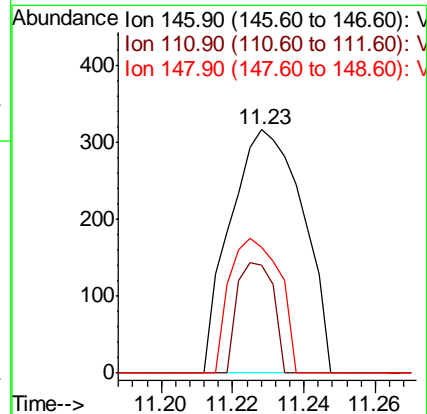
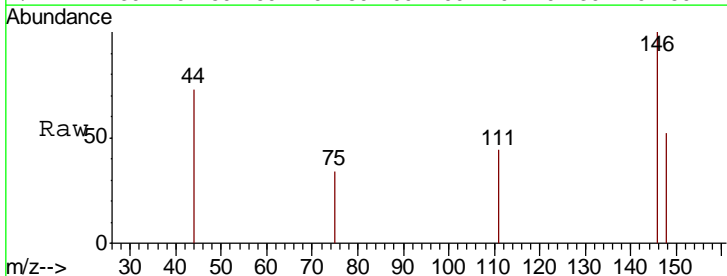
#86  
 p-Isopropyltoluene  
 Concen: 0.156 ug/l  
 RT: 11.29 min Scan# 3172  
 Delta R.T. 0.00 min  
 Lab File: VV009245.D  
 Acq: 23 Jan 2019 13:34

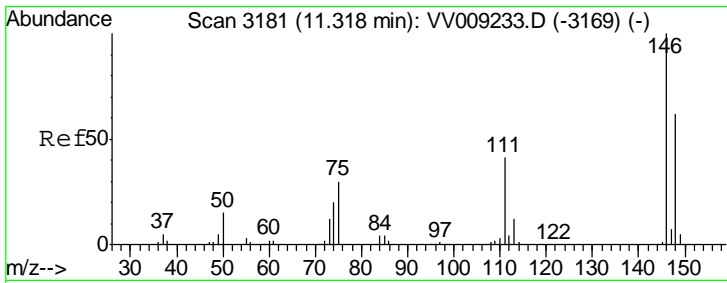
Tgt Ion	Resp	Lower	Upper
119	100		
134	25.2	13.0	38.9
91	35.6	12.4	37.2



#87  
 1,3-Dichlorobenzene  
 Concen: 0.209 ug/l  
 RT: 11.23 min Scan# 3153  
 Delta R.T. 0.00 min  
 Lab File: VV009245.D  
 Acq: 23 Jan 2019 13:34

Tgt Ion	Resp	Lower	Upper
146	100		
111	22.5	21.1	63.4
148	38.3	32.1	96.3

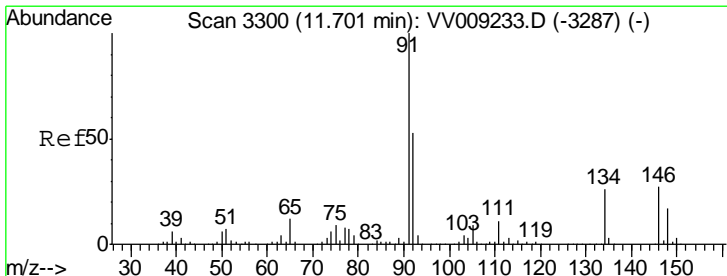
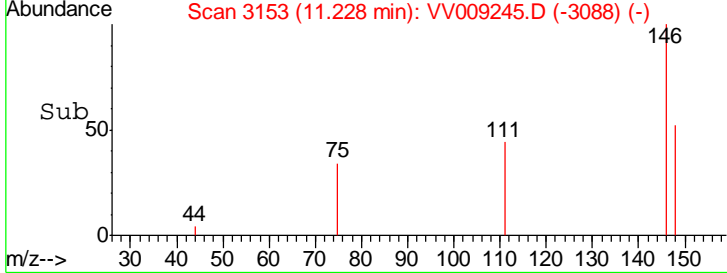
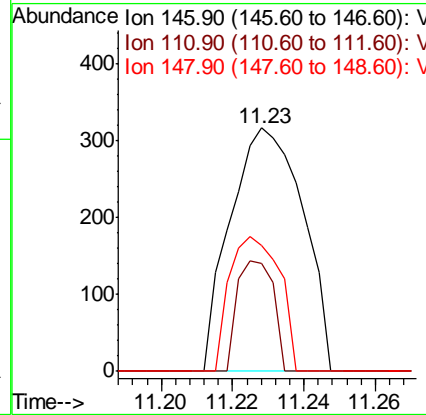
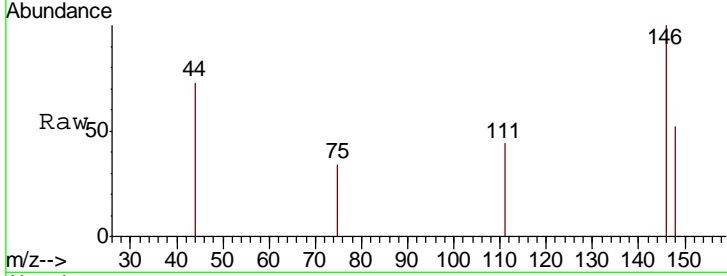




#88  
 1,4-Dichlorobenzene  
 Concen: 0.207 ug/l  
 RT: 11.23 min Scan# 3153  
 Delta R.T. -0.09 min  
 Lab File: VV009245.D  
 Acq: 23 Jan 2019 13:34

Tgt Ion: 146 Resp: 444

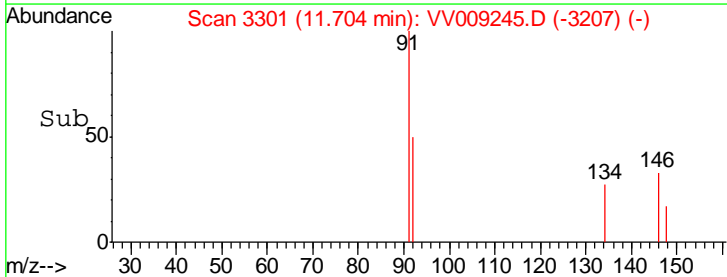
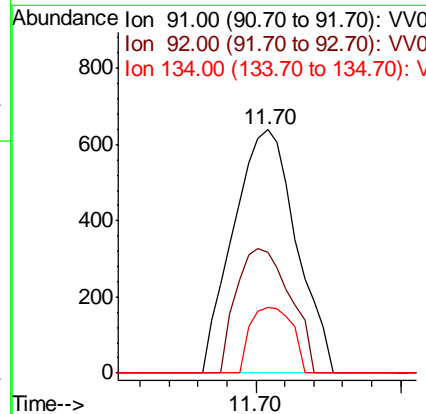
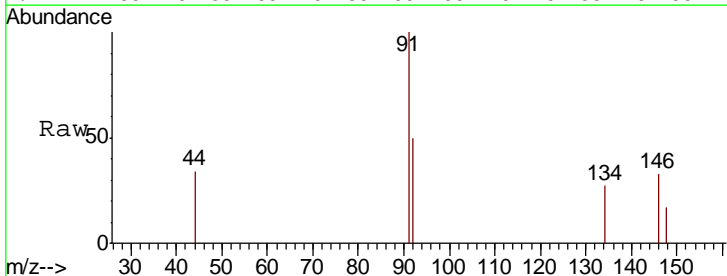
Ion	Ratio	Lower	Upper
146	100		
111	22.5	20.5	61.5
148	38.3	31.4	94.3

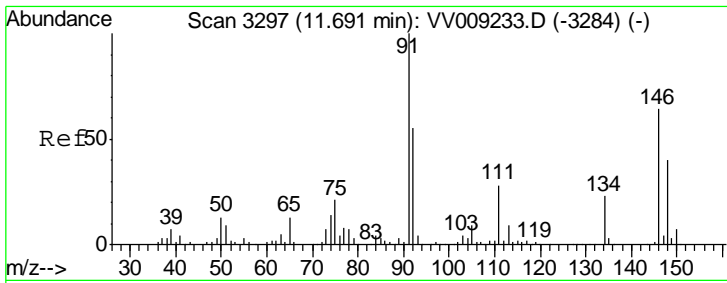


#89  
 n-Butylbenzene  
 Concen: 0.226 ug/l  
 RT: 11.70 min Scan# 3301  
 Delta R.T. 0.00 min  
 Lab File: VV009245.D  
 Acq: 23 Jan 2019 13:34

Tgt Ion: 91 Resp: 961

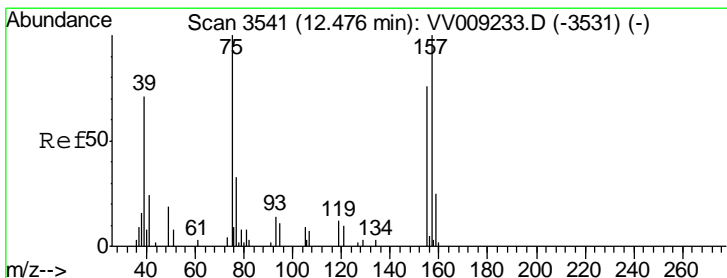
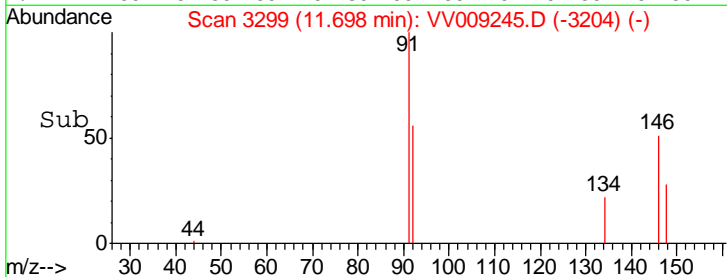
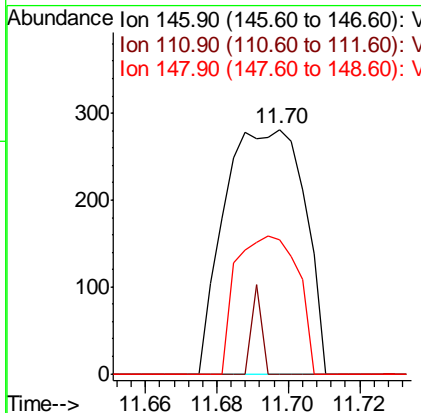
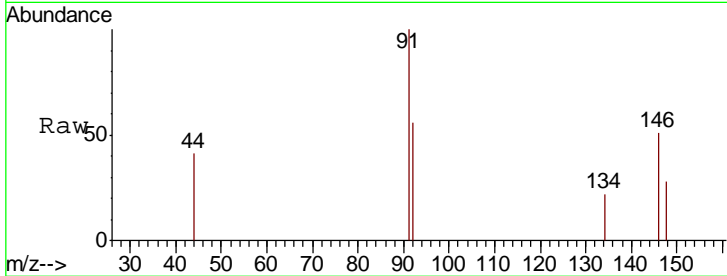
Ion	Ratio	Lower	Upper
91	100		
92	43.6	27.2	81.5
134	18.0	12.6	37.8





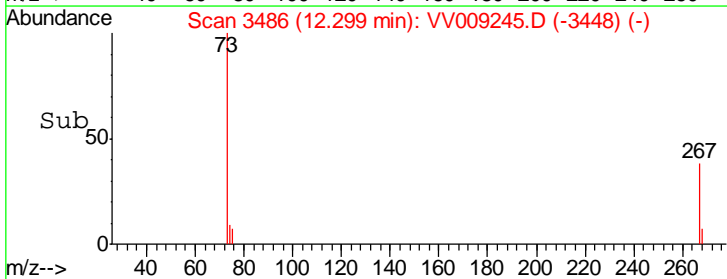
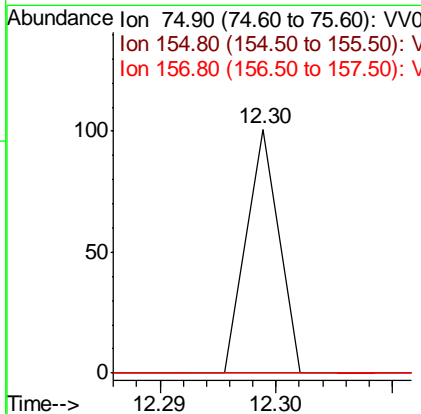
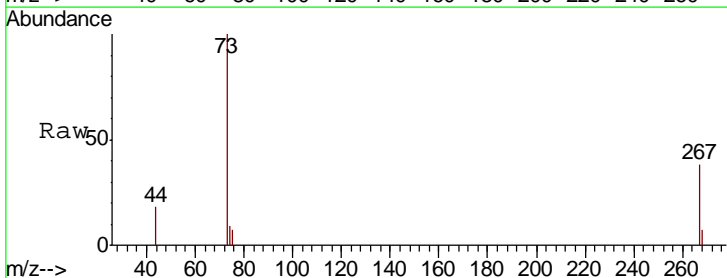
#91  
 1,2-Dichlorobenzene  
 Concen: 0.232 ug/l  
 RT: 11.70 min Scan# 3299  
 Delta R.T. 0.01 min  
 Lab File: VV009245.D  
 Acq: 23 Jan 2019 13:34

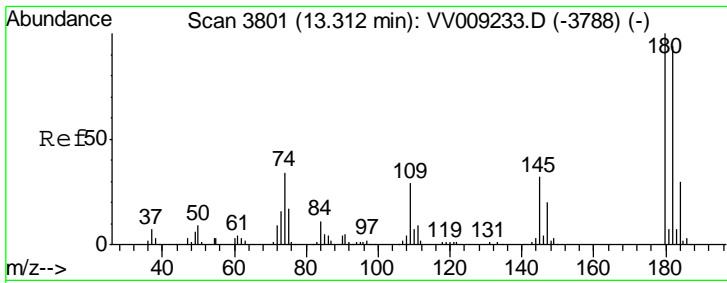
Tgt Ion	Resp	Lower	Upper
146	100		
111	4.6	21.9	65.8#
148	43.3	31.6	95.0



#92  
 1,2-Dibromo-3-Chloropropane  
 Concen: 0.141 ug/l  
 RT: 12.30 min Scan# 3486  
 Delta R.T. -0.18 min  
 Lab File: VV009245.D  
 Acq: 23 Jan 2019 13:34

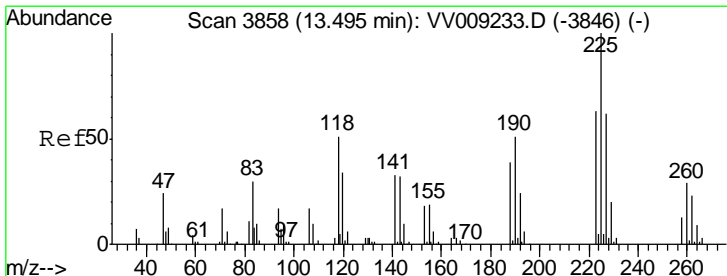
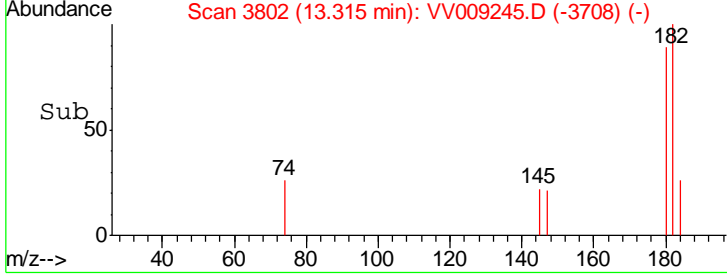
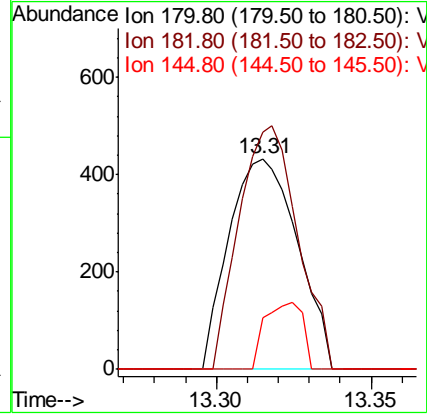
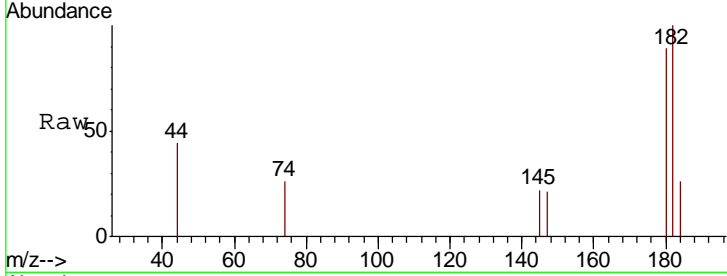
Tgt Ion	Resp	Lower	Upper
75	100		
155	0.0	38.0	114.0#
157	0.0	50.8	152.4#





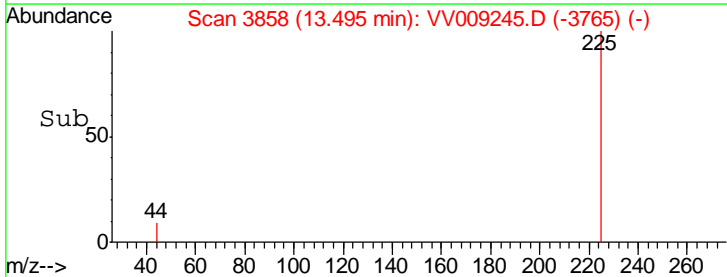
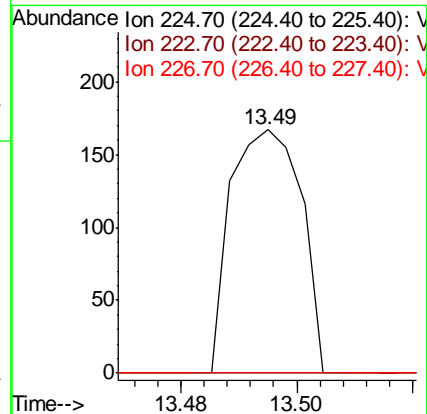
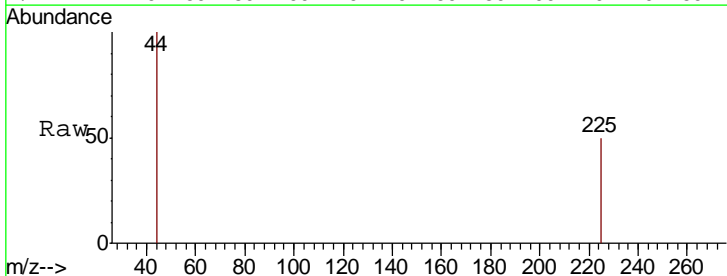
#93  
 1,2,4-Trichlorobenzene  
 Concen: 0.554 ug/l  
 RT: 13.31 min Scan# 3802  
 Delta R.T. 0.00 min  
 Lab File: VV009245.D  
 Acq: 23 Jan 2019 13:34

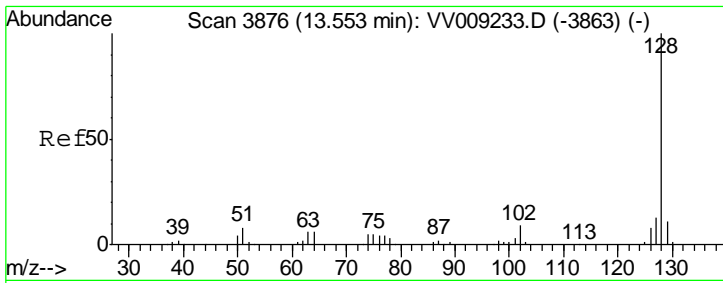
Tgt Ion	Resp	Ion Ratio	Lower	Upper
180	100			
182	99.3	47.1	141.4	
145	17.5	16.0	48.0	



#94  
 Hexachlorobutadiene  
 Concen: 0.187 ug/l  
 RT: 13.49 min Scan# 3858  
 Delta R.T. 0.00 min  
 Lab File: VV009245.D  
 Acq: 23 Jan 2019 13:34

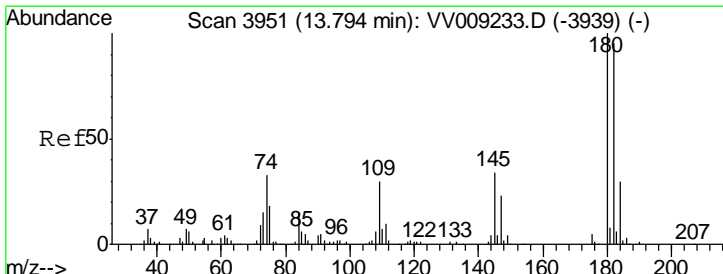
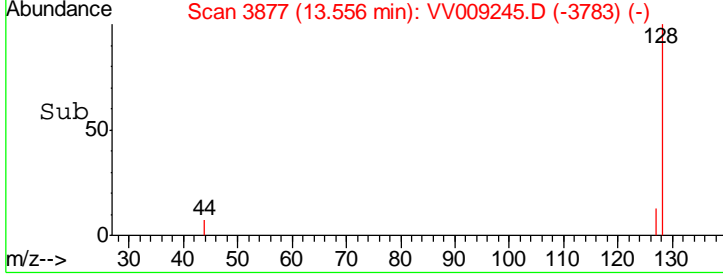
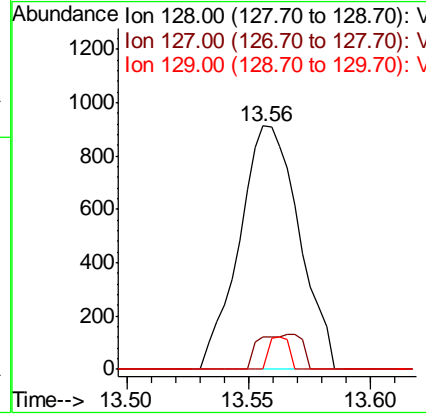
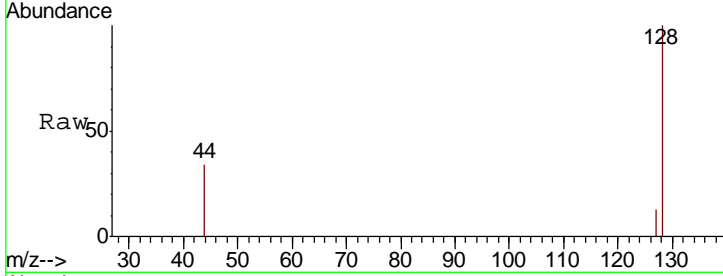
Tgt Ion	Resp	Ion Ratio	Lower	Upper
225	100			
223	0.0	31.7	95.1#	
227	0.0	31.6	95.0#	





#95  
 Naphthalene  
 Concen: 0.743 ug/l  
 RT: 13.56 min Scan# 3877  
 Delta R.T. 0.00 min  
 Lab File: VV009245.D  
 Acq: 23 Jan 2019 13:34

Tgt Ion	Resp	Lower	Upper
128	1548		
127	10.5	10.7	16.1#
129	4.4	8.8	13.2#



#96  
 1,2,3-Trichlorobenzene  
 Concen: 0.459 ug/l  
 RT: 13.80 min Scan# 3953  
 Delta R.T. 0.01 min  
 Lab File: VV009245.D  
 Acq: 23 Jan 2019 13:34

Tgt Ion	Resp	Lower	Upper
180	468		
182	113.5	47.4	142.2
145	45.1	17.2	51.5

