

Data Path : Z:\voasrv\HPCHEM1\MSVOA_V\Data\VW012324\
 Data File : VW033830.D
 Acq On : 23 Jan 2024 15:11
 Operator : SY/MD
 Sample : P1191-12
 Misc : 5.0mL/MSVOA_V/WATER
 ALS Vial : 17 Sample Multiplier: 1

Instrument :
 MSVOA_V
 ClientSampleId :

Quant Time: Jan 24 02:04:46 2024
 Quant Method : Z:\voasrv\HPCHEM1\MSVOA_V\Method\SFAMVLM011024WMA.M
 Quant Title : VOC Analysis
 QLast Update : Wed Jan 24 02:00:55 2024
 Response via : Initial Calibration

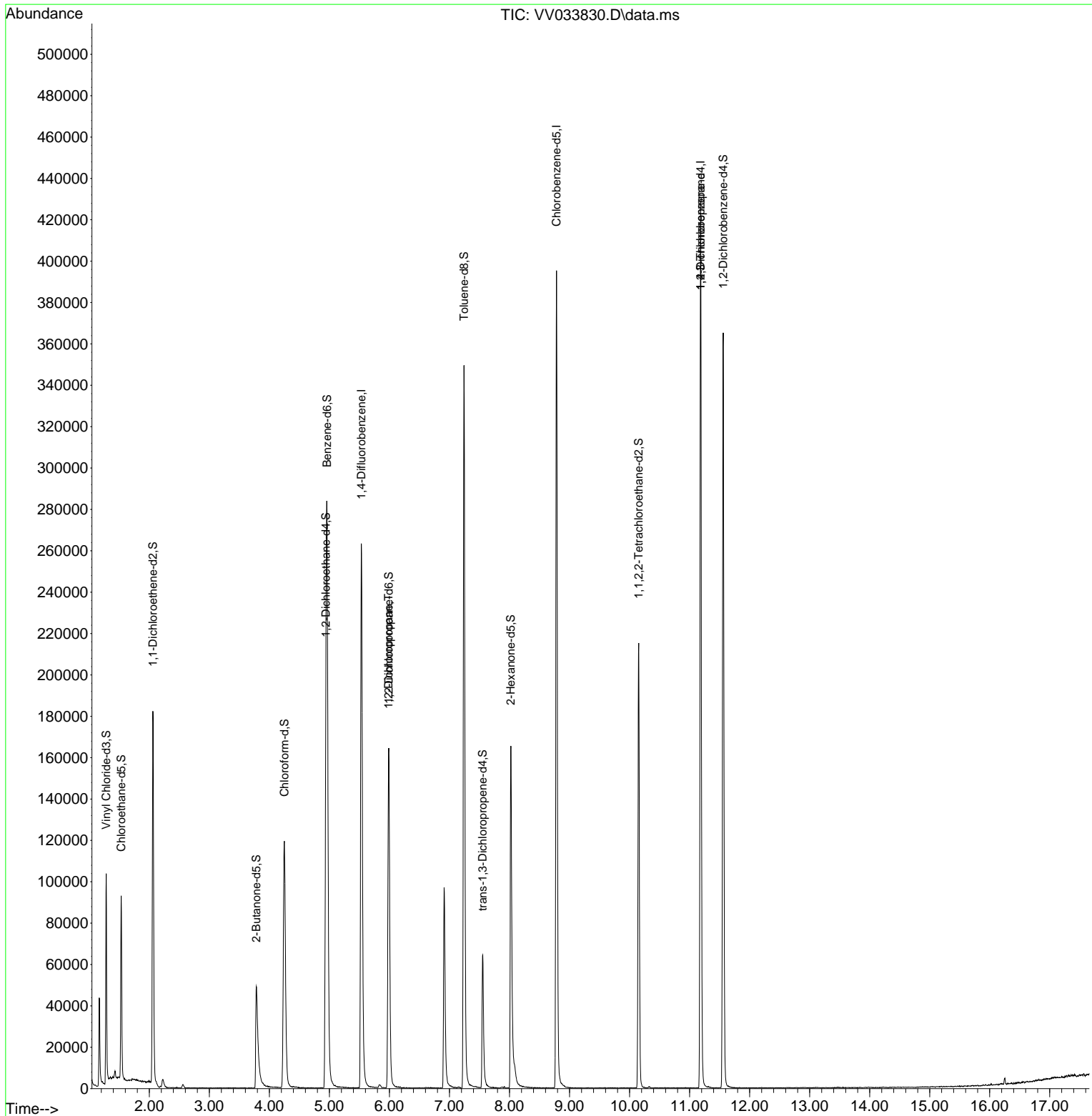
Compound	R.T.	QIon	Response	Conc	Units	Dev(Min)
Internal Standards						
1) 1,4-Difluorobenzene	5.532	114	225036	50.000	ug/L	0.00
28) Chlorobenzene-d5	8.783	117	208548	50.000	ug/L	0.00
58) 1,4-Dichlorobenzene-d4	11.185	152	105022	50.000	ug/L	0.00
System Monitoring Compounds						
4) Vinyl Chloride-d3	1.282	65	62491	36.132	ug/L	0.00
Spiked Amount	50.000	Range 60 - 135	Recovery	=	72.260%	
7) Chloroethane-d5	1.532	69	55691	40.661	ug/L	0.00
Spiked Amount	50.000	Range 70 - 130	Recovery	=	81.320%	
11) 1,1-Dichloroethene-d2	2.060	65	30380	40.815	ug/L	0.00
Spiked Amount	50.000	Range 60 - 125	Recovery	=	81.640%	
21) 2-Butanone-d5	3.783	46	77419	65.262	ug/L	0.00
Spiked Amount	100.000	Range 40 - 130	Recovery	=	65.260%	
24) Chloroform-d	4.249	84	127362	41.183	ug/L	0.00
Spiked Amount	50.000	Range 70 - 125	Recovery	=	82.360%	
26) 1,2-Dichloroethane-d4	4.941	65	87111	43.595	ug/L	0.00
Spiked Amount	50.000	Range 70 - 125	Recovery	=	87.200%	
32) Benzene-d6	4.960	84	249075	42.010	ug/L	0.00
Spiked Amount	50.000	Range 70 - 125	Recovery	=	84.020%	
36) 1,2-Dichloropropane-d6	5.989	67	79197	40.581	ug/L	0.00
Spiked Amount	50.000	Range 70 - 120	Recovery	=	81.160%	
41) Toluene-d8	7.243	98	229868	43.031	ug/L	0.00
Spiked Amount	50.000	Range 80 - 120	Recovery	=	86.060%	
43) trans-1,3-Dichloroprop...	7.551	79	39102	40.540	ug/L	0.00
Spiked Amount	50.000	Range 60 - 125	Recovery	=	81.080%	
47) 2-Hexanone-d5	8.021	63	57076	70.506	ug/L	0.00
Spiked Amount	100.000	Range 45 - 130	Recovery	=	70.510%	
56) 1,1,2,2-Tetrachloroeth...	10.153	84	100299	40.257	ug/L	0.00
Spiked Amount	50.000	Range 65 - 120	Recovery	=	80.520%	
66) 1,2-Dichlorobenzene-d4	11.561	152	91004	45.672	ug/L	0.00
Spiked Amount	50.000	Range 80 - 120	Recovery	=	91.340%	
Target Compounds						
37) 1,2-Dichloropropane	5.986	63	9481	5.625	ug/L #	88
61) 1,2,3-Trichloropropane	11.185	75	13383	7.180	ug/L #	66

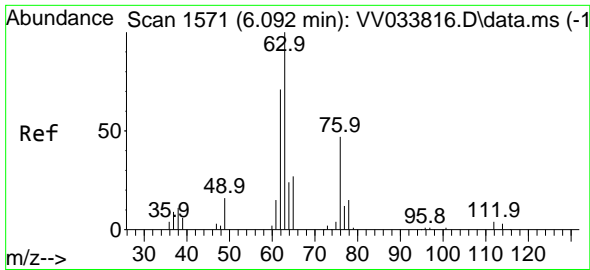
(#) = qualifier out of range (m) = manual integration (+) = signals summed

Data Path : Z:\voasrv\HPCHEM1\MSVOA_V\Data\VV012324\
 Data File : VV033830.D
 Acq On : 23 Jan 2024 15:11
 Operator : SY/MD
 Sample : P1191-12
 Misc : 5.0mL/MSVOA_V/WATER
 ALS Vial : 17 Sample Multiplier: 1

Instrument :
 MSVOA_V
 ClientSampleId :

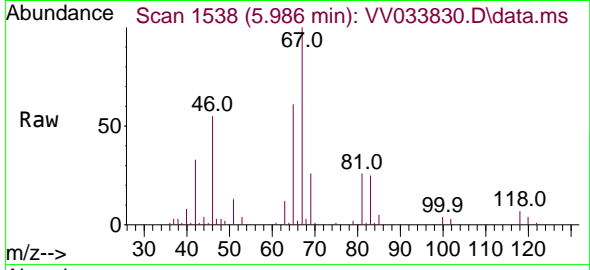
Quant Time: Jan 24 02:04:46 2024
 Quant Method : Z:\voasrv\HPCHEM1\MSVOA_V\Method\SFAMVLM011024WMA.M
 Quant Title : VOC Analysis
 QLast Update : Wed Jan 24 02:00:55 2024
 Response via : Initial Calibration



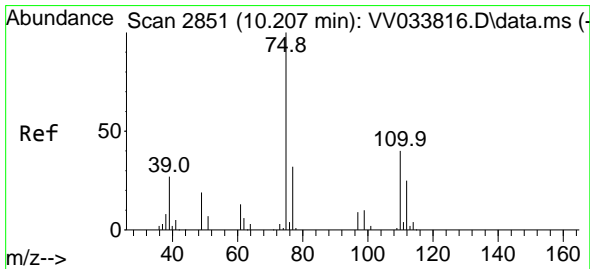
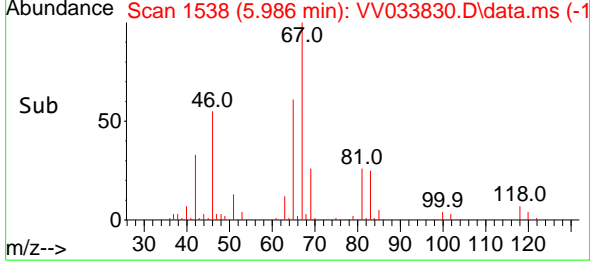
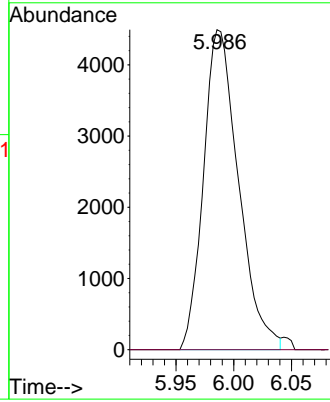


#37
 1,2-Dichloropropane
 Concen: 5.625 ug/L
 RT: 5.986 min Scan# 1111
 Delta R.T. -0.106 min
 Lab File: VV033830.D
 Acq: 23 Jan 2024 15:11

Instrument : MSVOA_V
 ClientSampleId :



Tgt Ion: 63 Resp: 9481
 Ion Ratio Lower Upper
 63 100
 112 0.0 3.1 4.7#



#61
 1,2,3-Trichloropropane
 Concen: 7.180 ug/L
 RT: 11.185 min Scan# 3155
 Delta R.T. 0.977 min
 Lab File: VV033830.D
 Acq: 23 Jan 2024 15:11

Tgt Ion: 75 Resp: 13383
 Ion Ratio Lower Upper
 75 100
 77 35.8 25.3 37.9
 110 2.8 29.5 44.3#

