

Data Path : Z:\voasrv\HPCHEM1\MSVOA_V\Data\VW012324\
 Data File : VW033833.D
 Acq On : 23 Jan 2024 16:47
 Operator : SY/MD
 Sample : P1191-17 50X
 Misc : 5.0mL/MSVOA_V/WATER
 ALS Vial : 21 Sample Multiplier: 1

Instrument :
 MSVOA_V
 ClientSampleId :

Quant Time: Jan 24 02:05:32 2024
 Quant Method : Z:\voasrv\HPCHEM1\MSVOA_V\Method\SFAMVLM011024WMA.M
 Quant Title : VOC Analysis
 QLast Update : Wed Jan 24 02:00:55 2024
 Response via : Initial Calibration

Compound	R.T.	QIon	Response	Conc	Units	Dev(Min)

Internal Standards						
1) 1,4-Difluorobenzene	5.532	114	223119	50.000	ug/L	0.00
28) Chlorobenzene-d5	8.783	117	210485	50.000	ug/L	0.00
58) 1,4-Dichlorobenzene-d4	11.185	152	106062	50.000	ug/L	0.00
System Monitoring Compounds						
4) Vinyl Chloride-d3	1.281	65	57539	33.555	ug/L	0.00
Spiked Amount	50.000	Range 60 - 135	Recovery =	67.100%		
7) Chloroethane-d5	1.529	69	52408	38.593	ug/L	0.00
Spiked Amount	50.000	Range 70 - 130	Recovery =	77.180%		
11) 1,1-Dichloroethene-d2	2.060	65	29069	39.390	ug/L	0.00
Spiked Amount	50.000	Range 60 - 125	Recovery =	78.780%		
21) 2-Butanone-d5	3.783	46	81092	68.945	ug/L	0.00
Spiked Amount	100.000	Range 40 - 130	Recovery =	68.950%		
24) Chloroform-d	4.249	84	121905	39.757	ug/L	0.00
Spiked Amount	50.000	Range 70 - 125	Recovery =	79.520%		
26) 1,2-Dichloroethane-d4	4.941	65	83241	42.016	ug/L	0.00
Spiked Amount	50.000	Range 70 - 125	Recovery =	84.040%		
32) Benzene-d6	4.960	84	236476	39.518	ug/L	0.00
Spiked Amount	50.000	Range 70 - 125	Recovery =	79.040%		
36) 1,2-Dichloropropane-d6	5.989	67	74223	37.682	ug/L	0.00
Spiked Amount	50.000	Range 70 - 120	Recovery =	75.360%		
41) Toluene-d8	7.243	98	215349	39.942	ug/L	0.00
Spiked Amount	50.000	Range 80 - 120	Recovery =	79.880%#		
43) trans-1,3-Dichloroprop...	7.555	79	35772	36.747	ug/L	0.00
Spiked Amount	50.000	Range 60 - 125	Recovery =	73.500%		
47) 2-Hexanone-d5	8.024	63	57145	69.942	ug/L	0.00
Spiked Amount	100.000	Range 45 - 130	Recovery =	69.940%		
56) 1,1,2,2-Tetrachloroeth...	10.153	84	97471	38.762	ug/L	0.00
Spiked Amount	50.000	Range 65 - 120	Recovery =	77.520%		
66) 1,2-Dichlorobenzene-d4	11.561	152	85577	42.527	ug/L	0.00
Spiked Amount	50.000	Range 80 - 120	Recovery =	85.060%		

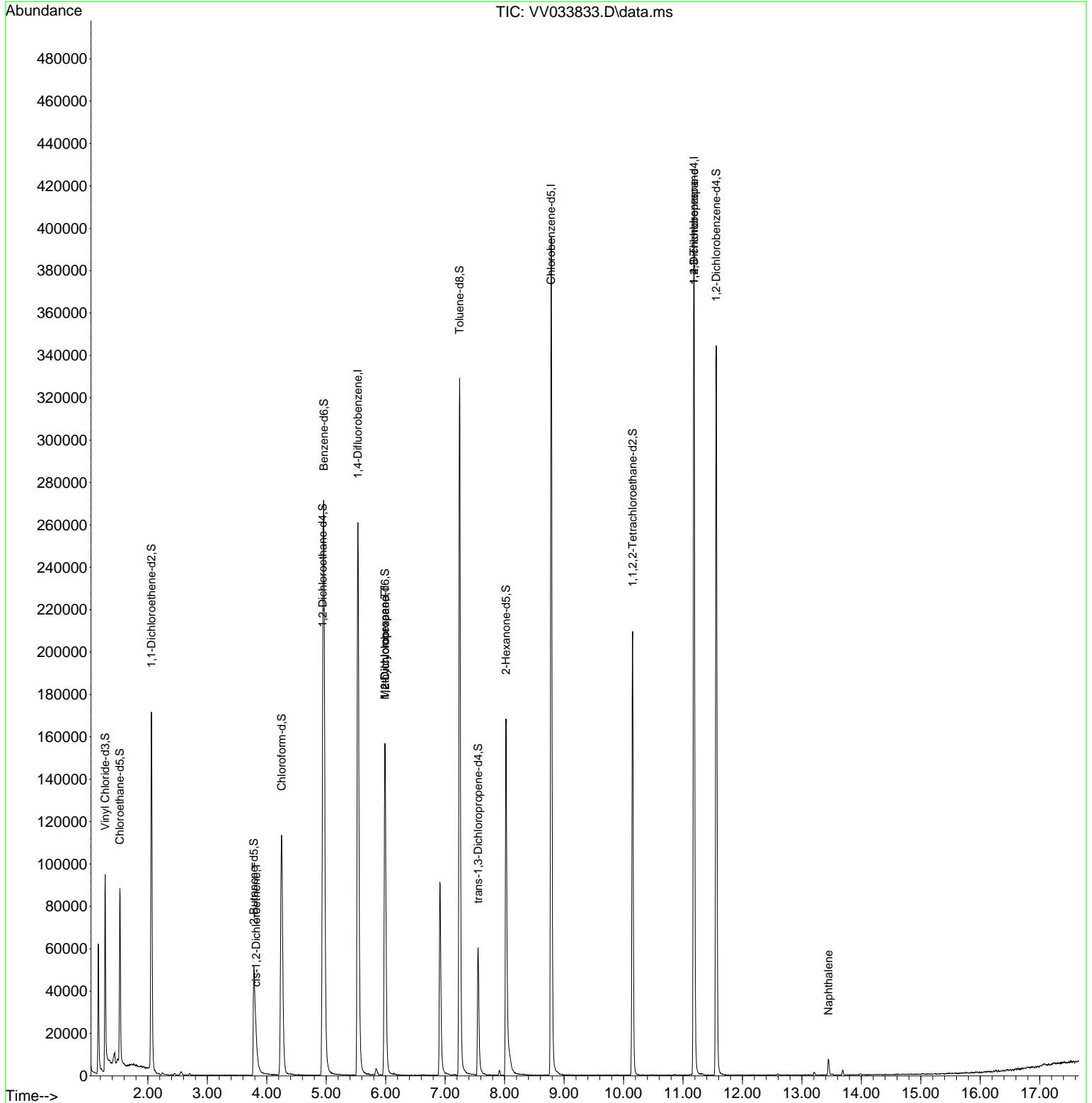
Target Compounds						Qvalue
20) cis-1,2-Dichloroethene	3.822	96	4506	2.707	ug/L	96
35) Methylcyclohexane	5.989	83	17867	6.295	ug/L #	15
37) 1,2-Dichloropropane	5.989	63	8824	5.187	ug/L #	88
61) 1,2,3-Trichloropropane	11.185	75	12910	6.859	ug/L #	66
71) Naphthalene	13.445	128	6679	1.176	ug/L	98

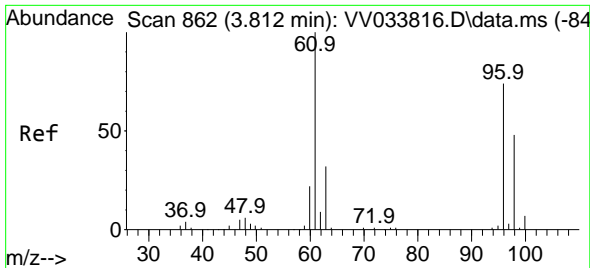
(#) = qualifier out of range (m) = manual integration (+) = signals summed

Data Path : Z:\voasrv\HPCHEM1\MSVOA_V\Data\VV012324\
 Data File : VV033833.D
 Acq On : 23 Jan 2024 16:47
 Operator : SY/MD
 Sample : P1191-17 50X
 Misc : 5.0mL/MSVOA_V/WATER
 ALS Vial : 21 Sample Multiplier: 1

Instrument :
 MSVOA_V
 ClientSampleId :

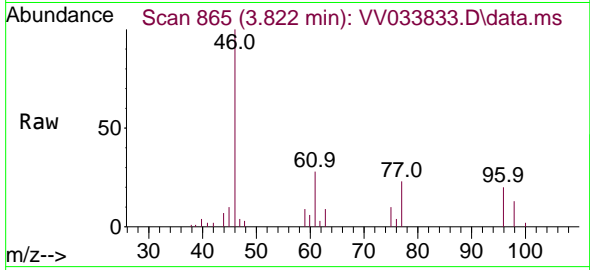
Quant Time: Jan 24 02:05:32 2024
 Quant Method : Z:\voasrv\HPCHEM1\MSVOA_V\Method\SFAMVLM011024WMA.M
 Quant Title : VOC Analysis
 QLast Update : Wed Jan 24 02:00:55 2024
 Response via : Initial Calibration





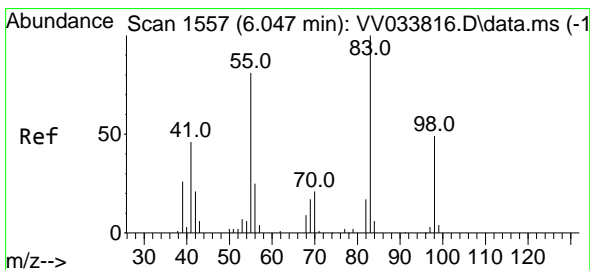
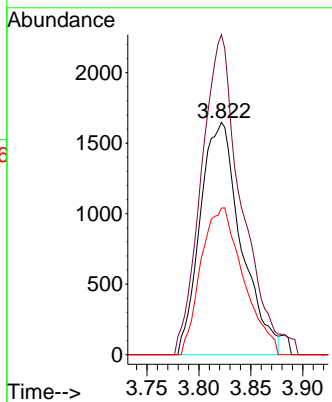
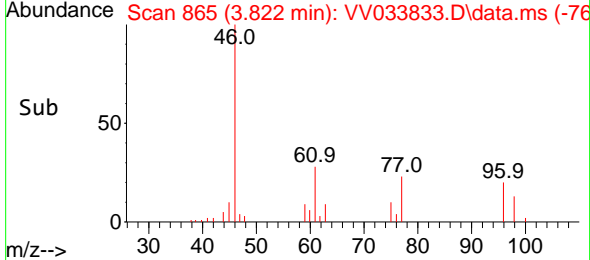
#20
 cis-1,2-Dichloroethene
 Concen: 2.707 ug/L
 RT: 3.822 min Scan# 80
 Delta R.T. 0.010 min
 Lab File: VV033833.D
 Acq: 23 Jan 2024 16:47

Instrument : MSVOA_V
 ClientSampleId :

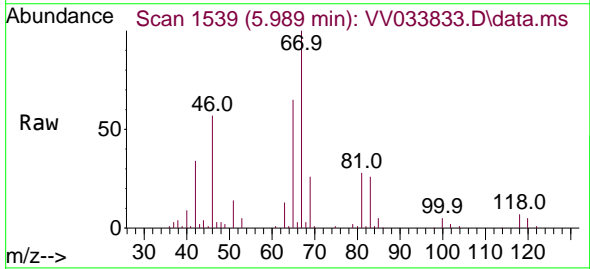


Tgt Ion: 96 Resp: 4506

Ion	Ratio	Lower	Upper
96	100		
61	137.8	100.6	186.8
98	63.1	44.6	82.8

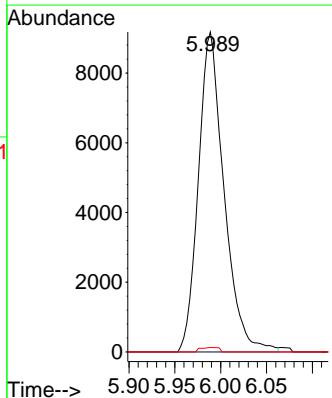
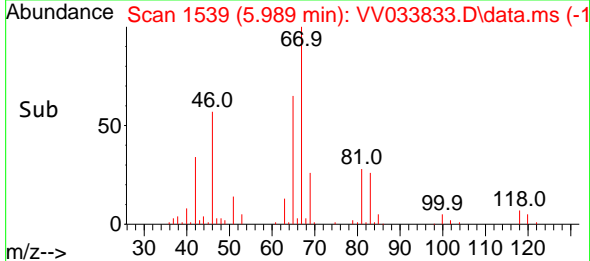


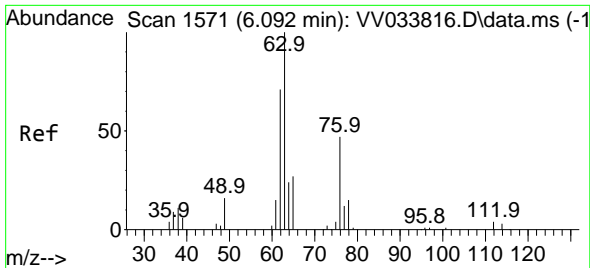
#35
 Methylcyclohexane
 Concen: 6.295 ug/L
 RT: 5.989 min Scan# 1539
 Delta R.T. -0.058 min
 Lab File: VV033833.D
 Acq: 23 Jan 2024 16:47



Tgt Ion: 83 Resp: 17867

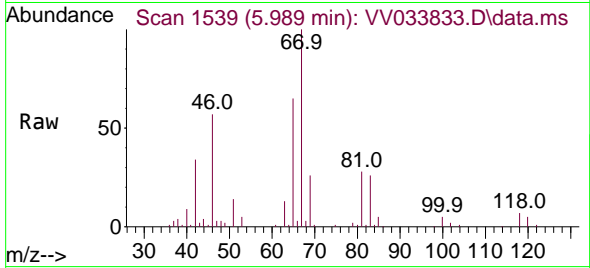
Ion	Ratio	Lower	Upper
83	100		
55	0.0	67.1	100.7#
98	0.2	37.7	56.5#



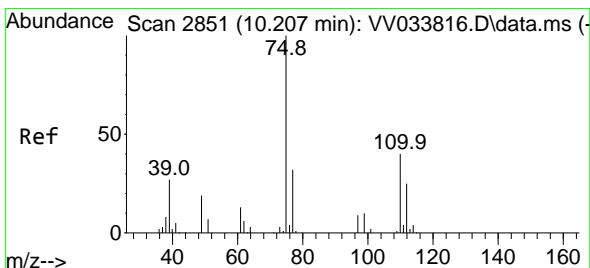
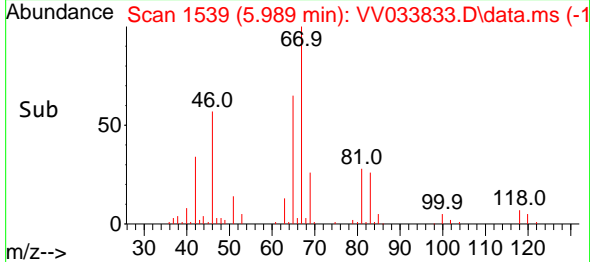
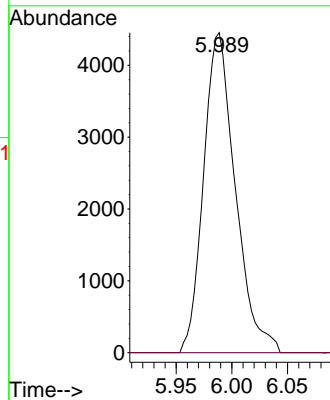


#37
 1,2-Dichloropropane
 Concen: 5.187 ug/L
 RT: 5.989 min Scan# 1111
 Delta R.T. -0.103 min
 Lab File: VV033833.D
 Acq: 23 Jan 2024 16:47

Instrument : MSVOA_V
 ClientSampleId :

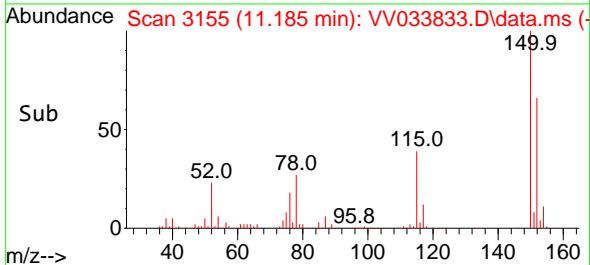
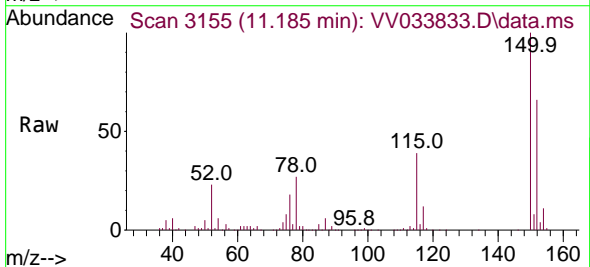
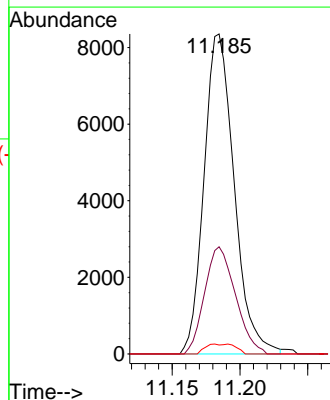


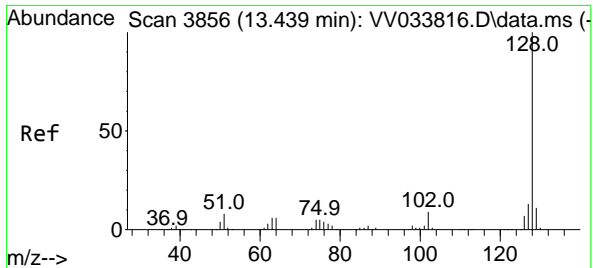
Tgt Ion: 63 Resp: 8824
 Ion Ratio Lower Upper
 63 100
 112 0.0 3.1 4.7#



#61
 1,2,3-Trichloropropane
 Concen: 6.859 ug/L
 RT: 11.185 min Scan# 3155
 Delta R.T. 0.977 min
 Lab File: VV033833.D
 Acq: 23 Jan 2024 16:47

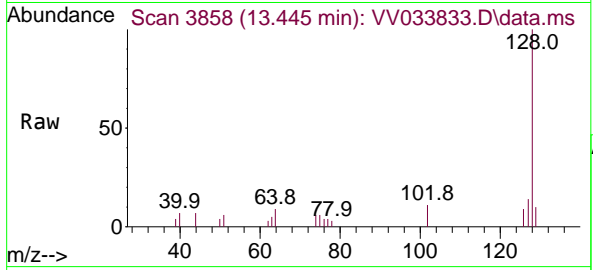
Tgt Ion: 75 Resp: 12910
 Ion Ratio Lower Upper
 75 100
 77 34.3 25.3 37.9
 110 1.6 29.5 44.3#





#71
 Naphthalene
 Concen: 1.176 ug/L
 RT: 13.445 min Scan# 3856
 Delta R.T. 0.006 min
 Lab File: VV033833.D
 Acq: 23 Jan 2024 16:47

Instrument : MSVOA_V
 ClientSampleId :



Tgt Ion:128 Resp: 6679

Ion	Ratio	Lower	Upper
128	100		
127	13.3	10.3	15.5
129	9.3	8.6	13.0

