

Data Path : Z:\voasrv\HPCHEM1\MSVOA_V\Data\VV012523\
 Data File : VV029951.D
 Acq On : 25 Jan 2023 18:41
 Operator : SY/MD
 Sample : 01292-08
 Misc : 25.0mL/MSVOA_V/WATER
 ALS Vial : 20 Sample Multiplier: 1

Instrument :
 MSVOA_V
 ClientSampleId :
 C0L65

Integration Parameters: rteint.p
 Integrator: RTE
 Smoothing : ON Filtering: 5
 Sampling : 1 Min Area: 3 % of largest Peak
 Start Thrs: 0.1 Max Peaks: 100
 Stop Thrs : 0 Peak Location: TOP

If leading or trailing edge < 100 prefer < Baseline drop else tangent >
 Peak separation: 5

Method : Z:\voasrv\HPCHEM1\MSVOA_V\Method\SFAMVTR011223WMA.M
 Title : TRACE VOA SFAM1.0

Signal : TIC: VV029951.D\data.ms

peak #	R.T. min	first scan	max scan	last scan	PK TY	peak height	corr. area	corr. % max.	% of total
1	1.304	75	82	100	rVB	159658	163553	19.10%	2.293%
2	1.564	155	163	179	rVB	144402	159321	18.61%	2.234%
3	2.105	320	331	345	rBV	250884	360959	42.15%	5.061%
4	3.886	874	885	924	rBV	80970	266732	31.15%	3.740%
5	4.339	1008	1026	1054	rBV	147287	369230	43.12%	5.177%
6	5.040	1225	1244	1273	rBV2	337207	856320	100.00%	12.006%
7	5.609	1408	1421	1448	rBV	266179	547943	63.99%	7.682%
8	5.908	1502	1514	1533	rBV2	56101	113931	13.30%	1.597%
9	6.059	1548	1561	1587	rBV	198363	412749	48.20%	5.787%
10	6.979	1836	1847	1869	rBV	79405	149720	17.48%	2.099%
11	7.307	1937	1949	1964	rBV	392573	695927	81.27%	9.757%
12	7.384	1965	1973	1988	rVB	32060	61360	7.17%	0.860%
13	7.616	2035	2045	2071	rBV	45226	83575	9.76%	1.172%
14	7.931	2130	2143	2156	rBV2	10673	20455	2.39%	0.287%
15	8.085	2180	2191	2232	rBV	348963	688567	80.41%	9.654%
16	8.841	2412	2426	2463	rBV	403333	679730	79.38%	9.530%
17	10.204	2840	2850	2871	rVB	138700	217327	25.38%	3.047%
18	10.371	2891	2902	2916	rBV	26351	43297	5.06%	0.607%
19	11.236	3159	3171	3194	rBV	411292	645501	75.38%	9.050%
20	11.612	3276	3288	3310	rBV	364556	579684	67.69%	8.127%
21	12.239	3473	3483	3497	rVB2	10184	16600	1.94%	0.233%

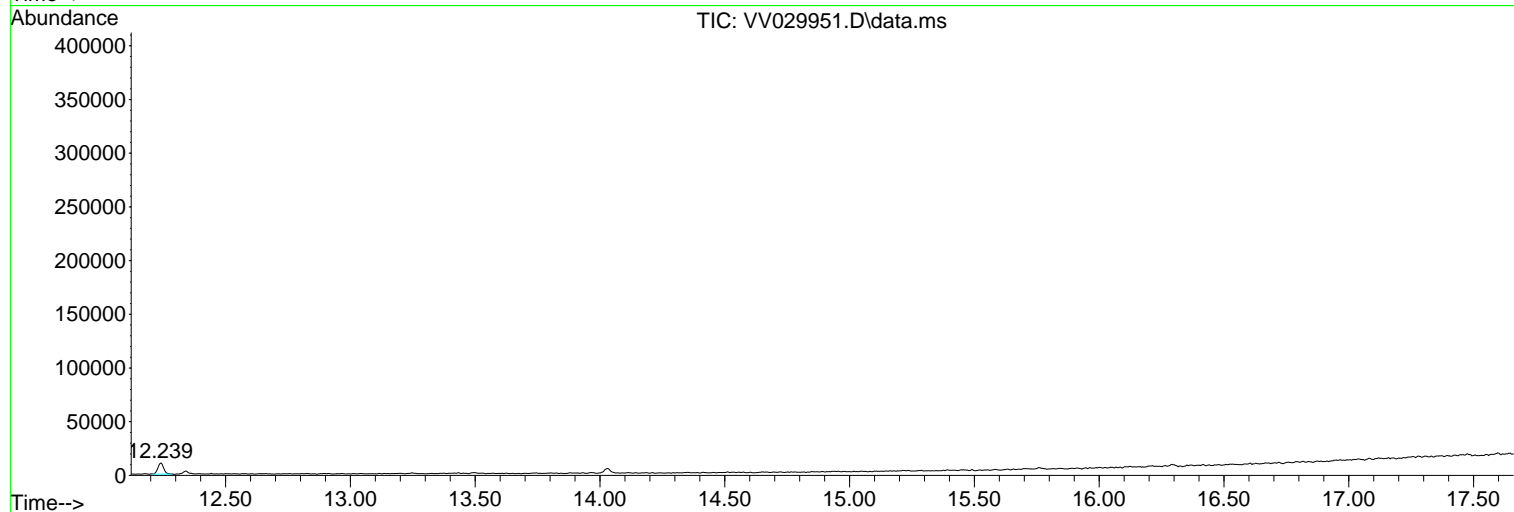
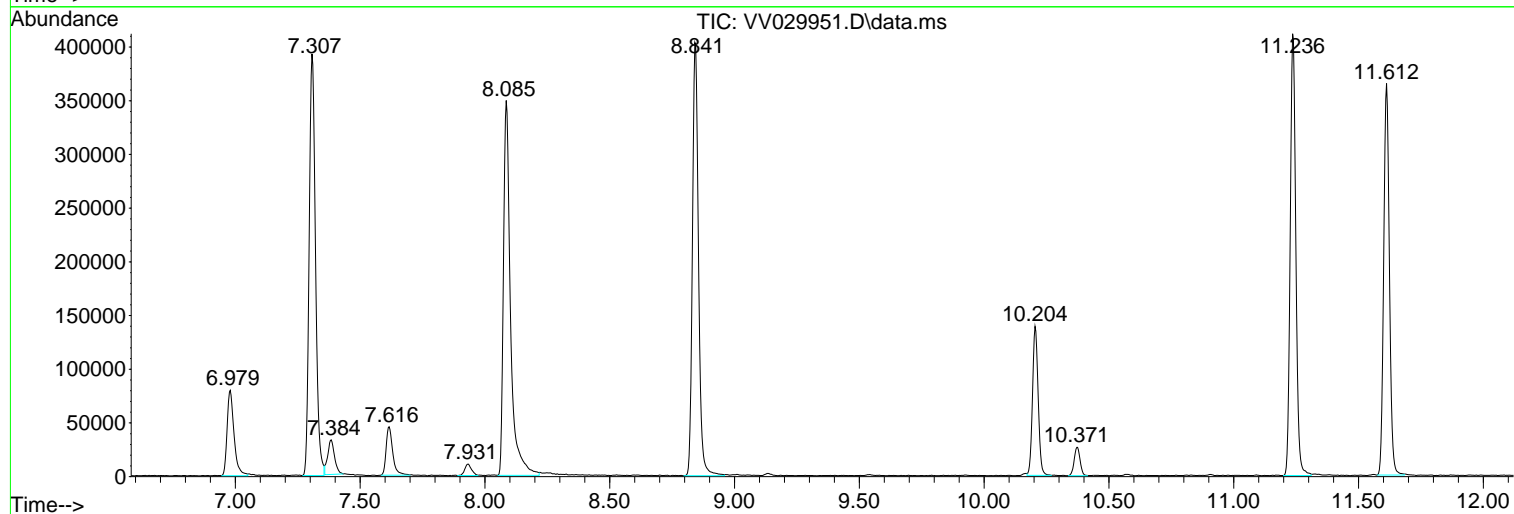
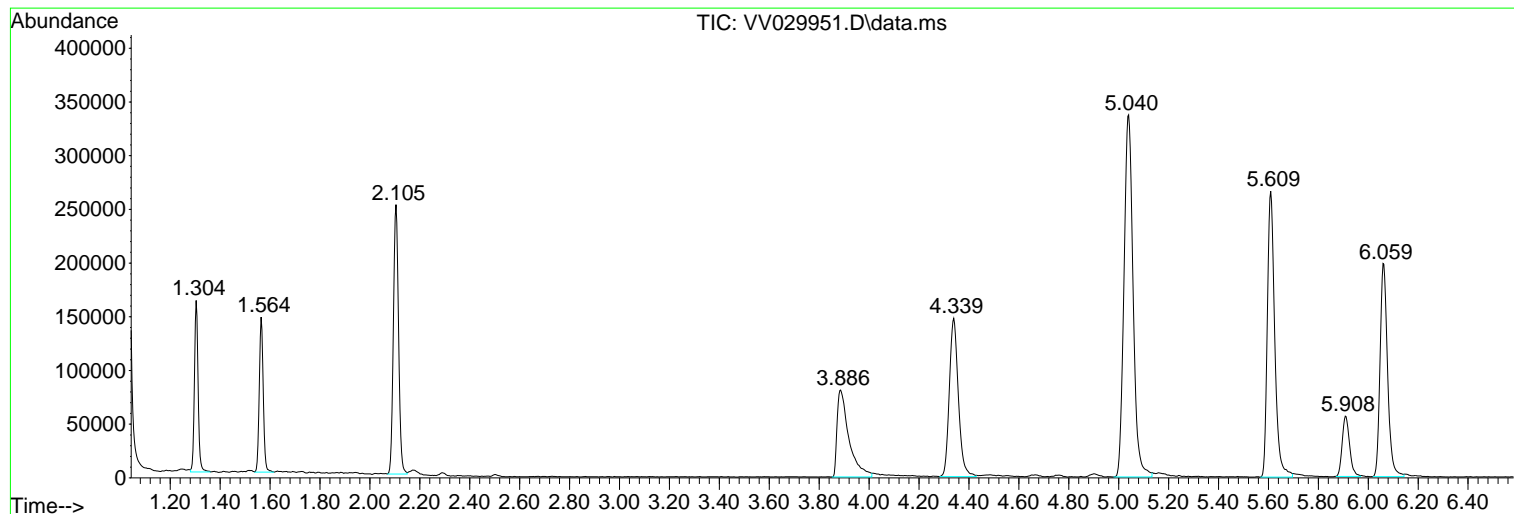
Sum of corrected areas: 7132481

Data Path : Z:\voasrv\HPCHEM1\MSVOA_V\Data\VV012523\
Data File : VV029951.D
Acq On : 25 Jan 2023 18:41
Operator : SY/MD
Sample : 01292-08
Misc : 25.0mL/MSVOA_V/WATER
ALS Vial : 20 Sample Multiplier: 1

Instrument :
MSVOA_V
ClientSampleId :
COL65

Quant Method : Z:\voasrv\HPCHEM1\MSVOA_V\Method\SFAMVTR011223WMA.M
Quant Title : TRACE VOA SFAM1.0

TIC Library : C:\Database\NIST20.L
TIC Integration Parameters: LSCINT.P



Library Search Compound Report

Data Path : Z:\voasrv\HPCHEM1\MSVOA_V\Data\VV012523\
Data File : VV029951.D
Acq On : 25 Jan 2023 18:41
Operator : SY/MD
Sample : 01292-08
Misc : 25.0mL/MSVOA_V/WATER
ALS Vial : 20 Sample Multiplier: 1

Instrument :
MSVOA_V
ClientSampleId :
C0L65

Quant Method : Z:\voasrv\HPCHEM1\MSVOA_V\Method\SFAMVTR011223WMA.M
Quant Title : TRACE VOA SFAM1.0

TIC Library : C:\Database\NIST20.L
TIC Integration Parameters: LSCINT.P

No Library Search Compounds Detected

Data Path : Z:\voasrv\HPCHEM1\MSVOA_V\Data\VV012523\
Data File : VV029951.D
Acq On : 25 Jan 2023 18:41
Operator : SY/MD
Sample : 01292-08
Misc : 25.0mL/MSVOA_V/WATER
ALS Vial : 20 Sample Multiplier: 1

Instrument :
MSVOA_V
ClientSampleId :
C0L65

Quant Method : Z:\voasrv\HPCHEM1\MSVOA_V\Method\SFAMVTR011223WMA.M
Quant Title : TRACE VOA SFAM1.0

TIC Library : C:\Database\NIST0.L
TIC Integration Parameters: LSCINT.P

TIC Top Hit name	RT	EstConc	Units	Response	--Internal Standard--			
					#	RT	Resp	Conc
