

Data Path : Z:\voasrv\HPCHEM1\MSVOA_V\Data\VW012623\
 Data File : VW029967.D
 Acq On : 26 Jan 2023 19:59
 Operator : SY/MD
 Sample : 01315-05
 Misc : 25.0mL/MSVOA_V/WATER
 ALS Vial : 17 Sample Multiplier: 1

Instrument :
 MSVOA_V
 ClientSampleId :
 VSTD005395

Quant Time: Jan 27 01:31:31 2023
 Quant Method : Z:\voasrv\HPCHEM1\MSVOA_V\Method\SFAMVTR011223WMA.M
 Quant Title : TRACE VOA SFAM1.0
 QLast Update : Fri Jan 27 01:28:41 2023
 Response via : Initial Calibration

Compound	R.T.	QIon	Response	Conc	Units	Dev(Min)
Internal Standards						
1) 1,4-Difluorobenzene	5.606	114	302439	5.000	ug/L	0.00
28) Chlorobenzene-d5	8.841	117	273932	5.000	ug/L	0.00
58) 1,4-Dichlorobenzene-d4	11.236	152	146959	5.000	ug/L	0.00
System Monitoring Compounds						
4) Vinyl Chloride-d3	1.304	65	109246	4.762	ug/L	0.00
Spiked Amount	5.000	Range 40 - 130	Recovery =	95.200%		
7) Chloroethane-d5	1.565	69	96727	5.087	ug/L	0.00
Spiked Amount	5.000	Range 65 - 130	Recovery =	101.800%		
11) 1,1-Dichloroethene-d2	2.105	63	201566	4.820	ug/L	0.00
Spiked Amount	5.000	Range 60 - 125	Recovery =	96.400%		
20) 2-Butanone-d5	3.883	46	181869	44.730	ug/L	0.00
Spiked Amount	50.000	Range 40 - 130	Recovery =	89.460%		
24) Chloroform-d	4.336	84	186812	4.439	ug/L	0.00
Spiked Amount	5.000	Range 70 - 125	Recovery =	88.800%		
26) 1,2-Dichloroethane-d4	5.021	65	77744	4.362	ug/L	0.00
Spiked Amount	5.000	Range 70 - 130	Recovery =	87.200%		
32) Benzene-d6	5.040	84	386250	4.753	ug/L	0.00
Spiked Amount	5.000	Range 70 - 125	Recovery =	95.000%		
36) 1,2-Dichloropropane-d6	6.060	67	117793	4.953	ug/L	0.00
Spiked Amount	5.000	Range 60 - 140	Recovery =	99.000%		
41) Toluene-d8	7.304	98	348744	4.636	ug/L	0.00
Spiked Amount	5.000	Range 70 - 130	Recovery =	92.800%		
43) trans-1,3-Dichloroprop...	7.609	79	38473	4.430	ug/L	0.00
Spiked Amount	5.000	Range 55 - 130	Recovery =	88.600%		
46) 2-Hexanone-d5	8.082	63	163505	46.242	ug/L	0.00
Spiked Amount	50.000	Range 45 - 130	Recovery =	92.480%		
56) 1,1,2,2-Tetrachloroeth...	10.204	84	76141	4.369	ug/L	0.00
Spiked Amount	5.000	Range 65 - 120	Recovery =	87.400%		
66) 1,2-Dichlorobenzene-d4	11.609	152	114227	4.275	ug/L	0.00
Spiked Amount	5.000	Range 80 - 120	Recovery =	85.600%		
Target Compounds						
2) Dichlorodifluoromethane	1.127	85	116310	4.132	ug/L	99
3) Chloromethane	1.240	50	151052	5.099	ug/L	100
5) Vinyl chloride	1.307	62	161906	5.574	ug/L	99
6) Bromomethane	1.516	94	57566	4.070	ug/L	99
8) Chloroethane	1.581	64	105923	6.010	ug/L	100
9) Trichlorofluoromethane	1.748	101	181637	4.774	ug/L	99
10) 1,1,2-Trichloro-1,2,2-...	2.111	101	106850	4.767	ug/L	93
12) 1,1-Dichloroethene	2.114	96	110107	4.264	ug/L	92
13) Acetone	2.179	43	153009	52.726	ug/L	98
14) Carbon disulfide	2.288	76	339097	4.561	ug/L	100
15) Methyl Acetate	2.429	43	36206	4.791	ug/L	96
16) Methylene chloride	2.500	84	132254	4.123	ug/L	89
17) Methyl tert-butyl Ether	2.761	73	241234	5.402	ug/L	97
18) trans-1,2-Dichloroethene	2.751	96	118892	4.953	ug/L	92
19) 1,1-Dichloroethane	3.179	63	228472	5.689	ug/L	99
21) 2-Butanone	3.963	43	229110	55.109	ug/L	99
22) cis-1,2-Dichloroethene	3.899	96	129440	5.060	ug/L	89
23) Bromochloromethane	4.233	128	52433	4.964	ug/L	84
25) Chloroform	4.362	83	220664	5.055	ug/L	98

Data Path : Z:\voasrv\HPCHEM1\MSVOA_V\Data\VW012623\
 Data File : VW029967.D
 Acq On : 26 Jan 2023 19:59
 Operator : SY/MD
 Sample : 01315-05
 Misc : 25.0mL/MSVOA_V/WATER
 ALS Vial : 17 Sample Multiplier: 1

Instrument :
 MSVOA_V
 ClientSampleId :
 VSTD005395

Quant Time: Jan 27 01:31:31 2023
 Quant Method : Z:\voasrv\HPCHEM1\MSVOA_V\Method\SFAMVTR011223WMA.M
 Quant Title : TRACE VOA SFAM1.0
 QLast Update : Fri Jan 27 01:28:41 2023
 Response via : Initial Calibration

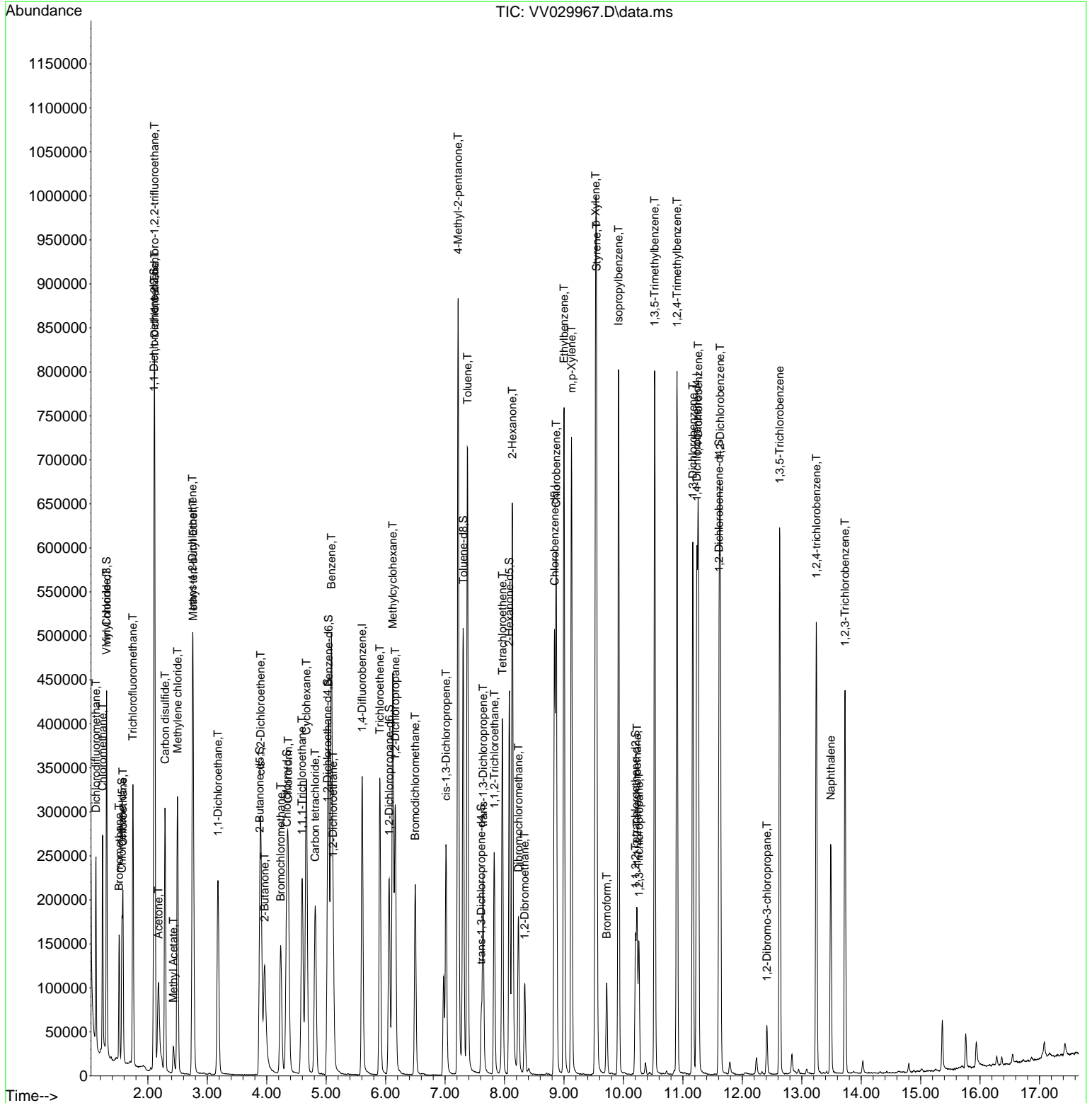
Compound	R.T.	QIon	Response	Conc	Units	Dev(Min)
27) 1,2-Dichloroethane	5.117	62	114517	5.399	ug/L	99
29) 1,1,1-Trichloroethane	4.593	97	182714	5.137	ug/L	97
30) Cyclohexane	4.667	56	186184	5.529	ug/L	95
31) Carbon tetrachloride	4.815	117	145320	4.695	ug/L	98
33) Benzene	5.089	78	505611	5.583	ug/L	100
34) Trichloroethene	5.902	95	119645	5.213	ug/L	96
35) Methylcyclohexane	6.121	83	191957	4.954	ug/L	96
37) 1,2-Dichloropropane	6.162	63	128815	6.073	ug/L	99
38) Bromodichloromethane	6.497	83	148132	5.400	ug/L	96
39) cis-1,3-Dichloropropene	7.015	75	167953	5.905	ug/L	99
40) 4-Methyl-2-pentanone	7.220	43	575083	63.536	ug/L	95
42) Toluene	7.378	91	525912	5.384	ug/L	99
44) trans-1,3-Dichloropropene	7.638	75	134578	5.871	ug/L	100
45) 1,1,2-Trichloroethane	7.828	97	81013	5.301	ug/L	97
47) Tetrachloroethene	7.963	164	93705	4.849	ug/L	99
48) 2-Hexanone	8.130	43	398567	61.607	ug/L	96
49) Dibromochloromethane	8.233	129	90099	5.024	ug/L	99
50) 1,2-Dibromoethane	8.339	107	69563	5.244	ug/L	100
51) Chlorobenzene	8.870	112	317799	5.124	ug/L	100
52) Ethylbenzene	9.002	91	526752	5.153	ug/L	99
53) m,p-Xylene	9.127	106	205931	5.089	ug/L	100
54) o-Xylene	9.532	106	194041	5.053	ug/L	100
55) Styrene	9.548	104	338002	5.117	ug/L	97
57) 1,1,2,2-Tetrachloroethane	10.230	83	93407	5.503	ug/L	98
59) Bromoform	9.719	173	45572	4.788	ug/L	99
60) Isopropylbenzene	9.918	105	510940	5.439	ug/L	100
61) 1,2,3-Trichloropropane	10.262	75	62231	5.719	ug/L	98
62) 1,3,5-Trimethylbenzene	10.526	105	412624	5.126	ug/L	100
63) 1,2,4-Trimethylbenzene	10.902	105	426574	5.314	ug/L	100
64) 1,3-Dichlorobenzene	11.169	146	247766	5.194	ug/L	99
65) 1,4-Dichlorobenzene	11.259	146	246426	5.182	ug/L	98
67) 1,2-Dichlorobenzene	11.628	146	230915	5.385	ug/L	98
68) 1,2-Dibromo-3-chloropr...	12.413	75	13643	5.302	ug/L	98
69) 1,3,5-Trichlorobenzene	12.628	180	191260	4.981	ug/L	99
70) 1,2,4-trichlorobenzene	13.246	180	158555	5.285	ug/L	99
71) Naphthalene	13.487	128	209314	5.385	ug/L	99
72) 1,2,3-Trichlorobenzene	13.728	180	134905	5.417	ug/L	99

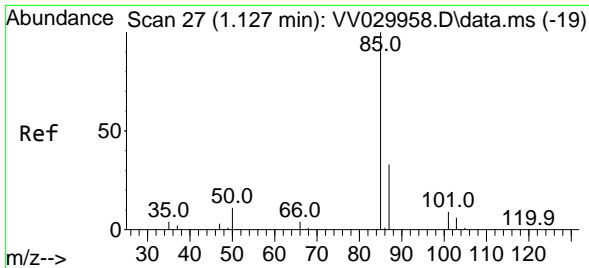
(#) = qualifier out of range (m) = manual integration (+) = signals summed

Data Path : Z:\voasrv\HPCHEM1\MSVOA_V\Data\VV012623\
 Data File : VV029967.D
 Acq On : 26 Jan 2023 19:59
 Operator : SY/MD
 Sample : 01315-05
 Misc : 25.0mL/MSVOA_V/WATER
 ALS Vial : 17 Sample Multiplier: 1

Instrument :
 MSVOA_V
 ClientSampleId :
 VSTD005395

Quant Time: Jan 27 01:31:31 2023
 Quant Method : Z:\voasrv\HPCHEM1\MSVOA_V\Method\SFAMVTR011223WMA.M
 Quant Title : TRACE VOA SFAM1.0
 QLast Update : Fri Jan 27 01:28:41 2023
 Response via : Initial Calibration

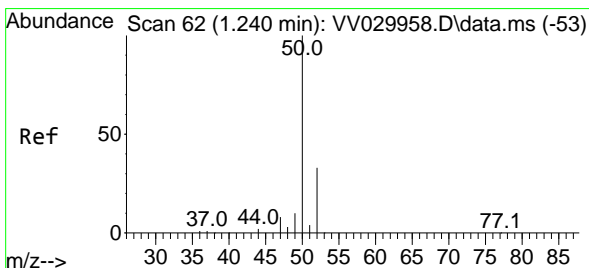
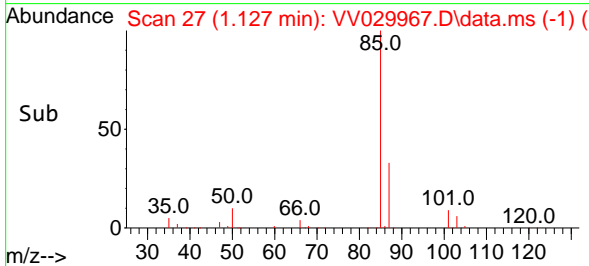
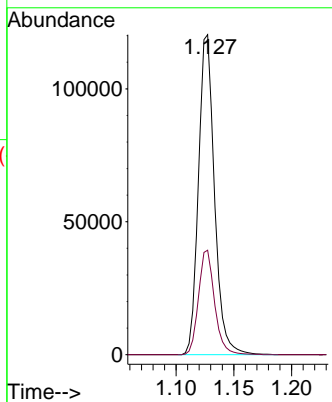
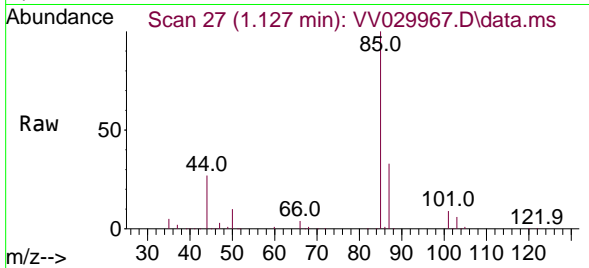




#2
 Dichlorodifluoromethane
 Concen: 4.132 ug/L
 RT: 1.127 min Scan# 21
 Delta R.T. 0.000 min
 Lab File: VV029967.D
 Acq: 26 Jan 2023 19:59

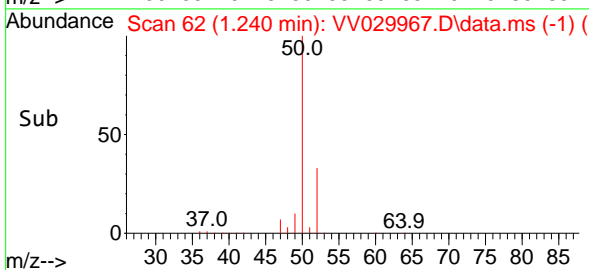
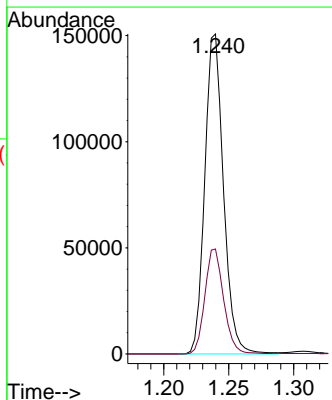
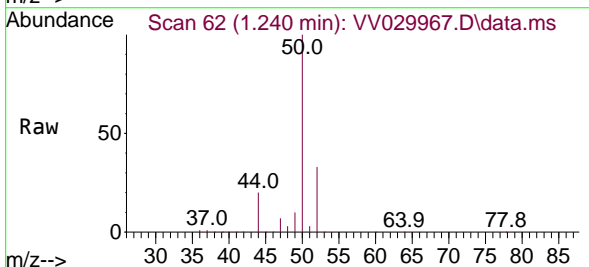
Instrument : MSVOA_V
 ClientSampleId : VSTD005395

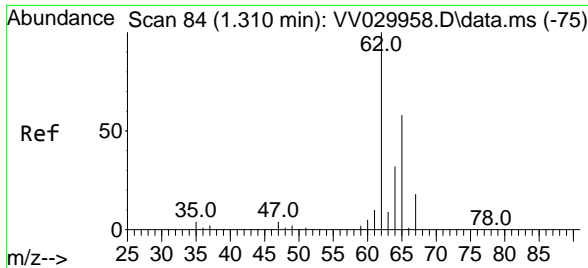
Tgt Ion: 85 Resp: 116310
 Ion Ratio Lower Upper
 85 100
 87 32.8 26.5 39.7



#3
 Chloromethane
 Concen: 5.099 ug/L
 RT: 1.240 min Scan# 62
 Delta R.T. 0.000 min
 Lab File: VV029967.D
 Acq: 26 Jan 2023 19:59

Tgt Ion: 50 Resp: 151052
 Ion Ratio Lower Upper
 50 100
 52 32.8 23.1 42.9

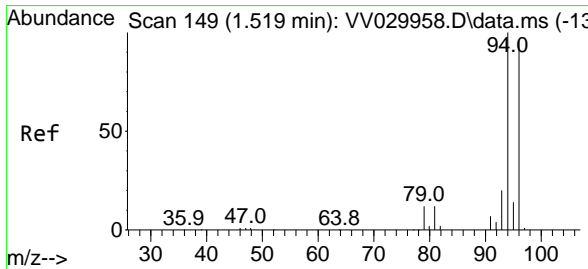
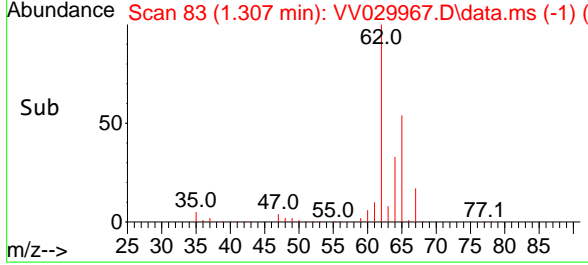
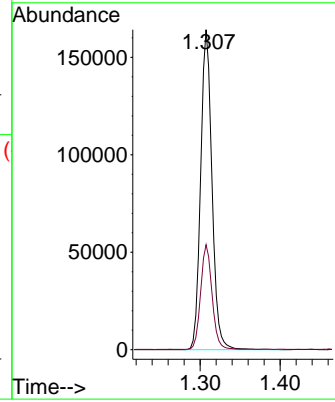
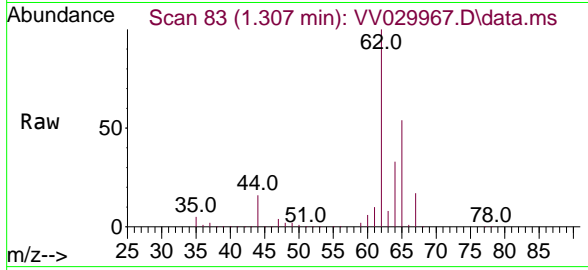




#5
 Vinyl chloride
 Concen: 5.574 ug/L
 RT: 1.307 min Scan# 81
 Delta R.T. -0.003 min
 Lab File: VV029967.D
 Acq: 26 Jan 2023 19:59

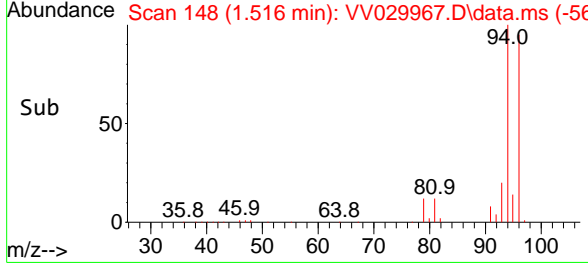
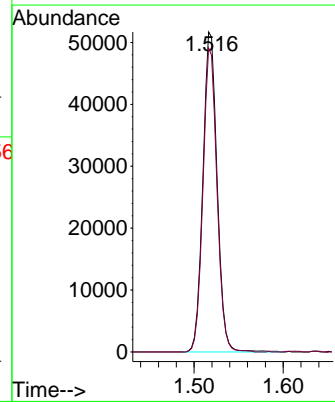
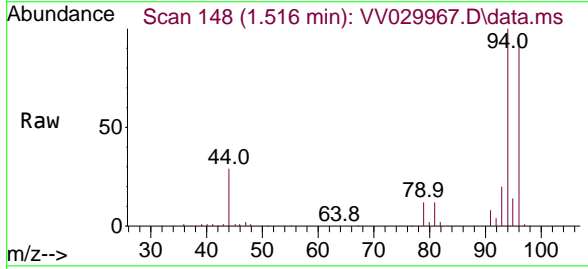
Instrument : MSVOA_V
 ClientSampleId : VSTD005395

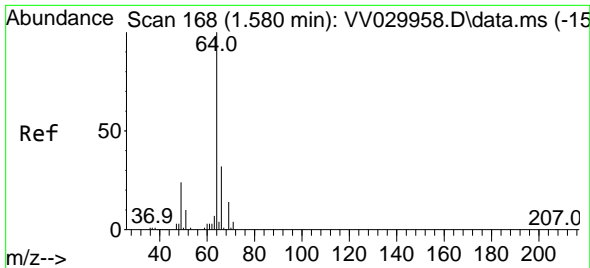
Tgt Ion: 62 Resp: 161906
 Ion Ratio Lower Upper
 62 100
 64 32.8 23.2 43.2



#6
 Bromomethane
 Concen: 4.070 ug/L
 RT: 1.516 min Scan# 148
 Delta R.T. -0.003 min
 Lab File: VV029967.D
 Acq: 26 Jan 2023 19:59

Tgt Ion: 94 Resp: 57566
 Ion Ratio Lower Upper
 94 100
 96 95.0 65.9 122.5

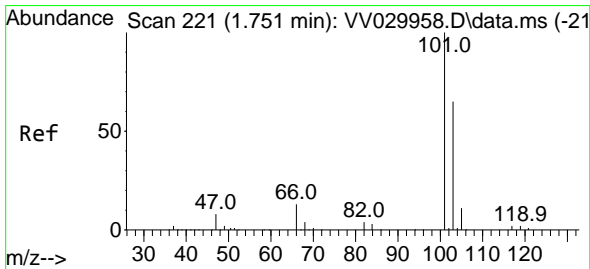
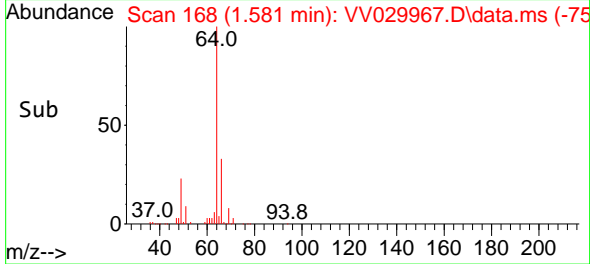
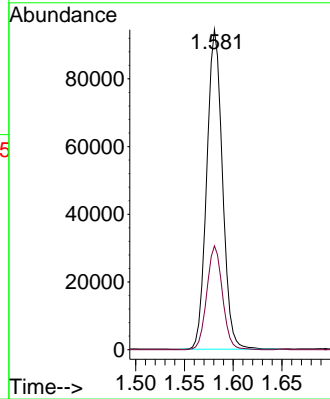
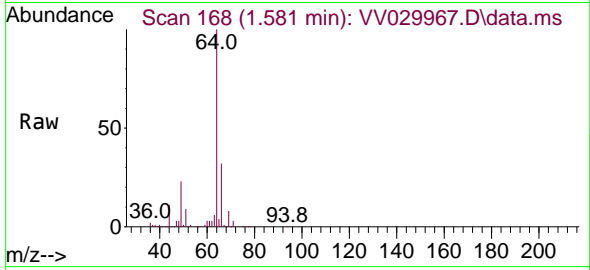




#8
 Chloroethane
 Concen: 6.010 ug/L
 RT: 1.581 min Scan# 10
 Delta R.T. 0.000 min
 Lab File: VV029967.D
 Acq: 26 Jan 2023 19:59

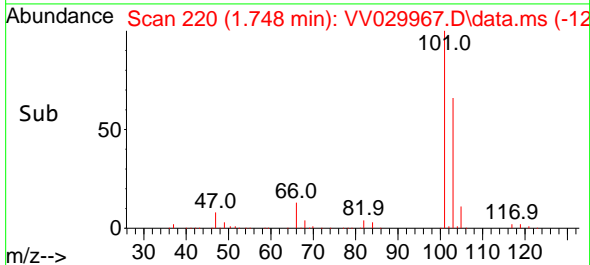
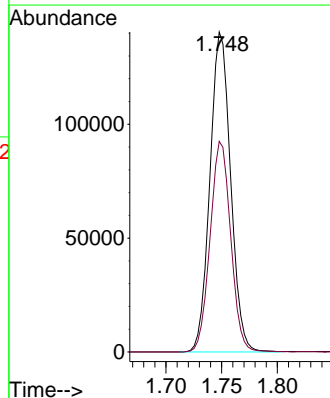
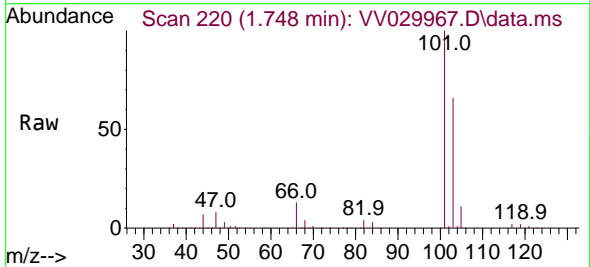
Instrument : MSVOA_V
 ClientSampleId : VSTD005395

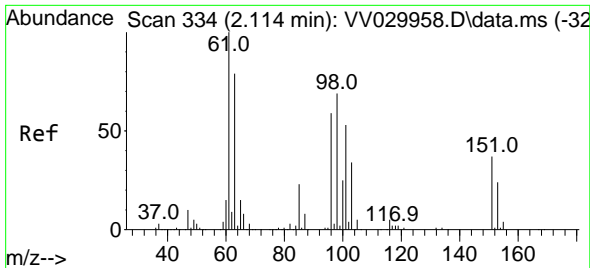
Tgt Ion: 64 Resp: 105923
 Ion Ratio Lower Upper
 64 100
 66 32.5 22.9 42.5



#9
 Trichlorofluoromethane
 Concen: 4.774 ug/L
 RT: 1.748 min Scan# 220
 Delta R.T. -0.003 min
 Lab File: VV029967.D
 Acq: 26 Jan 2023 19:59

Tgt Ion:101 Resp: 181637
 Ion Ratio Lower Upper
 101 100
 103 65.5 51.8 77.8

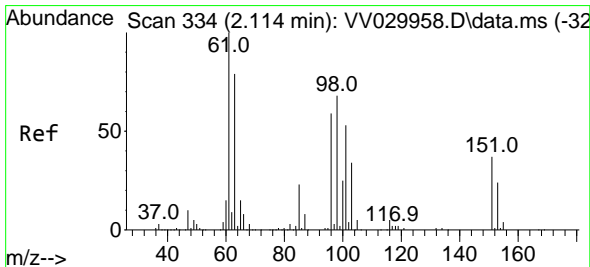
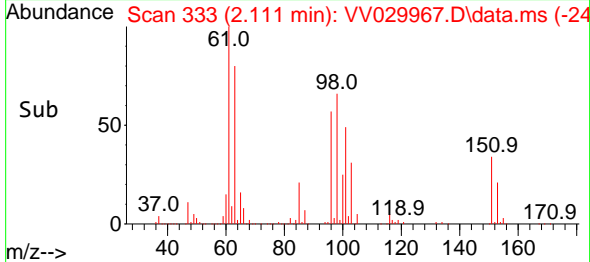
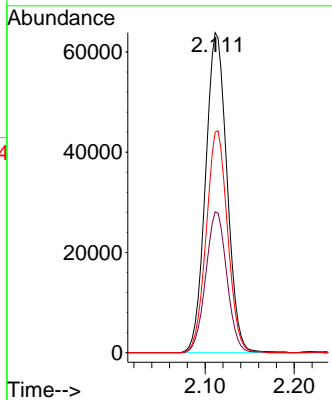
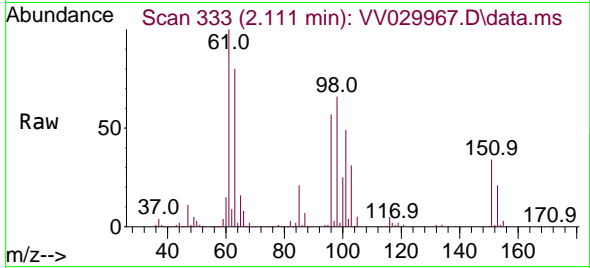




#10
 1,1,2-Trichloro-1,2,2-trifluoroethane
 Concen: 4.767 ug/L
 RT: 2.111 min Scan# 311
 Delta R.T. -0.003 min
 Lab File: VV029967.D
 Acq: 26 Jan 2023 19:59

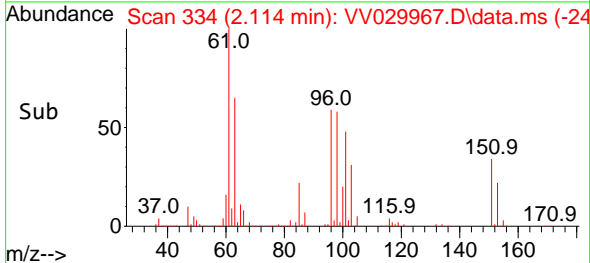
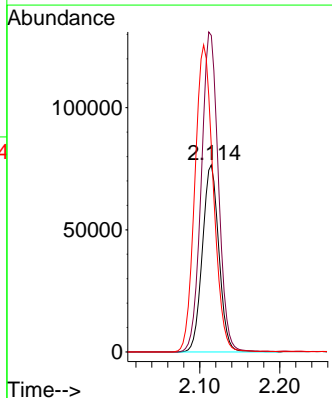
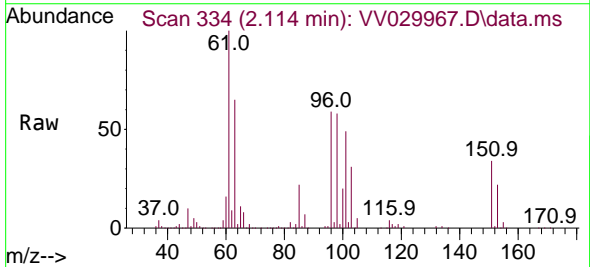
Instrument : MSVOA_V
 ClientSampleId : VSTD005395

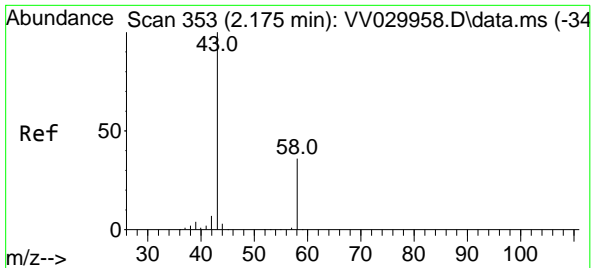
Tgt Ion:	101	Resp:	106850
Ion Ratio	Lower	Upper	
101	100		
85	43.4	32.9	49.3
151	69.0	60.9	91.3



#12
 1,1-Dichloroethene
 Concen: 4.264 ug/L
 RT: 2.114 min Scan# 334
 Delta R.T. 0.000 min
 Lab File: VV029967.D
 Acq: 26 Jan 2023 19:59

Tgt Ion:	96	Resp:	110107
Ion Ratio	Lower	Upper	
96	100		
61	169.2	106.1	197.1
63	110.1	76.4	141.8

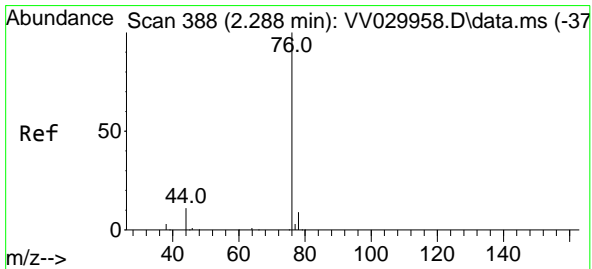
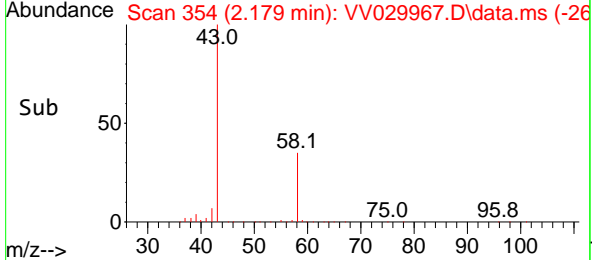
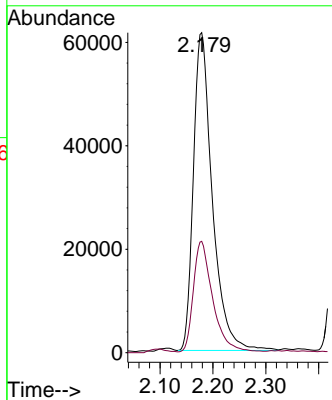
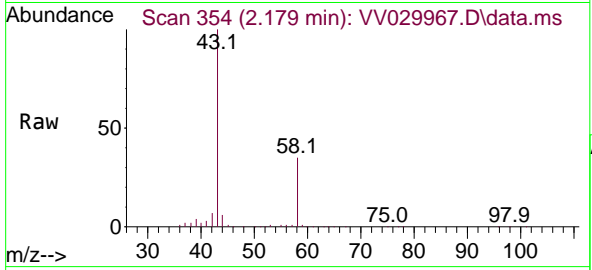




#13
 Acetone
 Concen: 52.726 ug/L
 RT: 2.179 min Scan# 311
 Delta R.T. 0.003 min
 Lab File: VV029967.D
 Acq: 26 Jan 2023 19:59

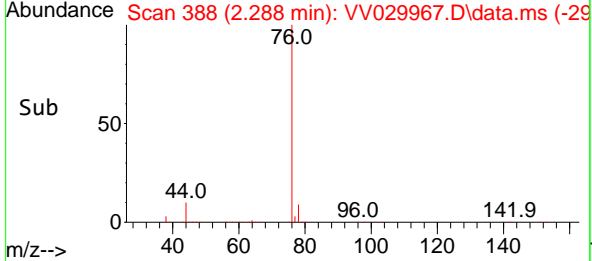
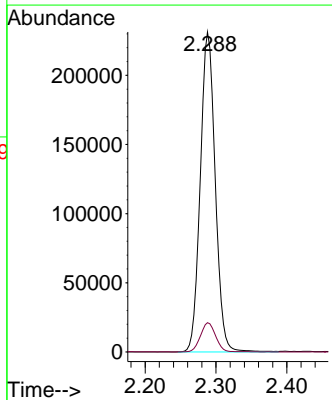
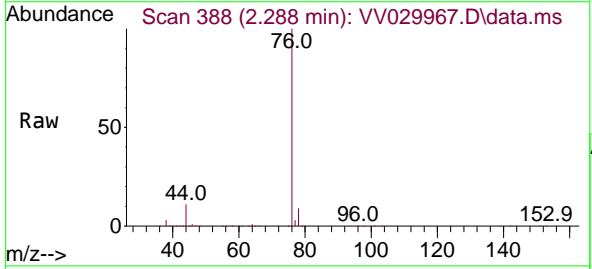
Instrument : MSVOA_V
 ClientSampleId : VSTD005395

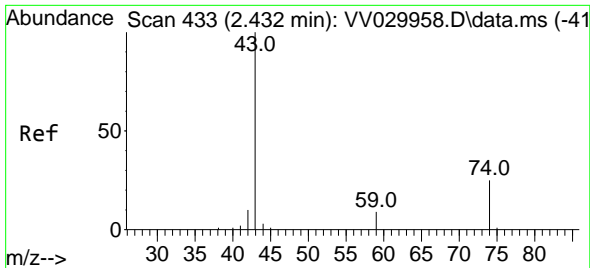
Tgt Ion	Resp	Lower	Upper
43	153009		
58	35.6	0.0	68.8



#14
 Carbon disulfide
 Concen: 4.561 ug/L
 RT: 2.288 min Scan# 388
 Delta R.T. 0.000 min
 Lab File: VV029967.D
 Acq: 26 Jan 2023 19:59

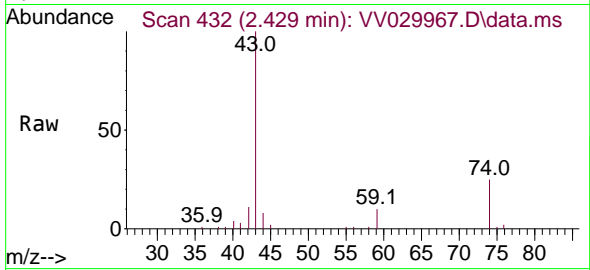
Tgt Ion	Resp	Lower	Upper
76	339097		
78	9.2	7.4	11.0



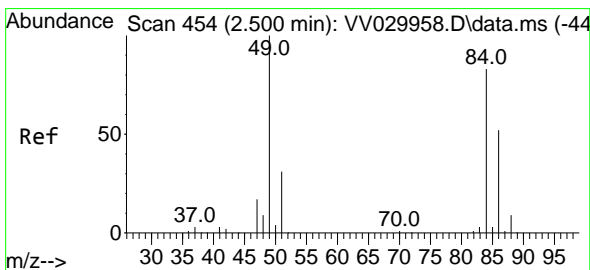
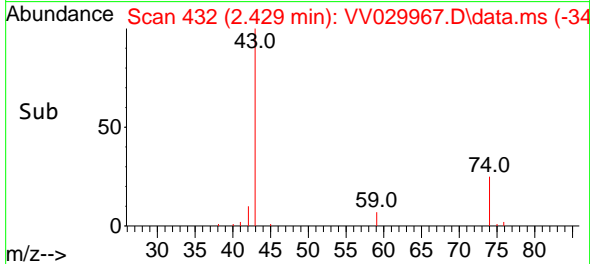
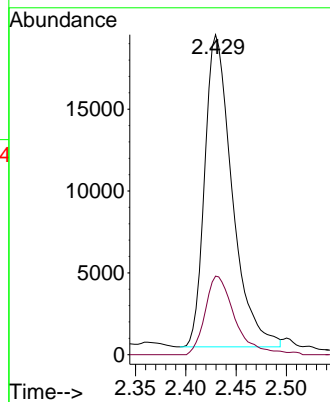


#15
 Methyl Acetate
 Concen: 4.791 ug/L
 RT: 2.429 min Scan# 411
 Delta R.T. -0.003 min
 Lab File: VV029967.D
 Acq: 26 Jan 2023 19:59

Instrument : MSVOA_V
 ClientSampleId : VSTD005395

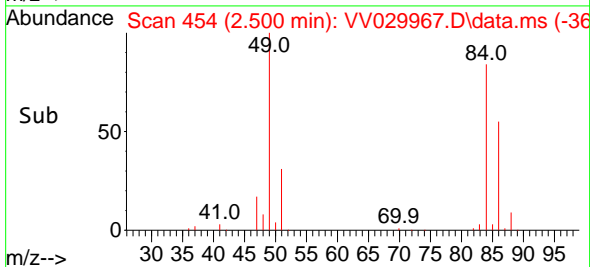
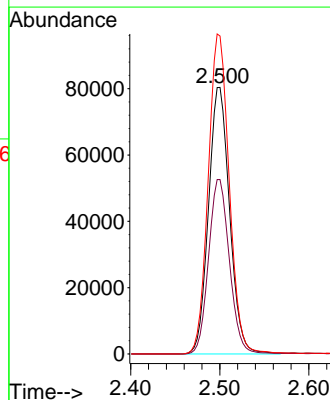
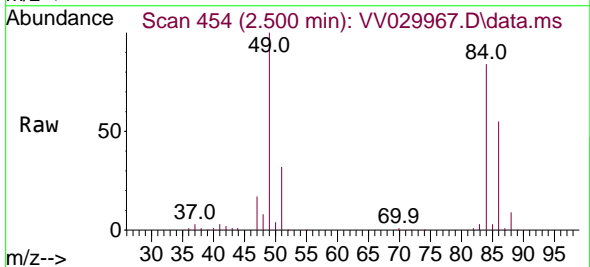


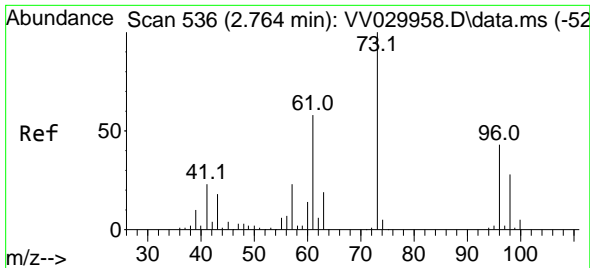
Tgt Ion: 43 Resp: 36206
 Ion Ratio Lower Upper
 43 100
 74 27.2 23.4 35.0



#16
 Methylene chloride
 Concen: 4.123 ug/L
 RT: 2.500 min Scan# 454
 Delta R.T. 0.000 min
 Lab File: VV029967.D
 Acq: 26 Jan 2023 19:59

Tgt Ion: 84 Resp: 132254
 Ion Ratio Lower Upper
 84 100
 86 65.4 45.0 83.6
 49 119.3 71.5 132.7



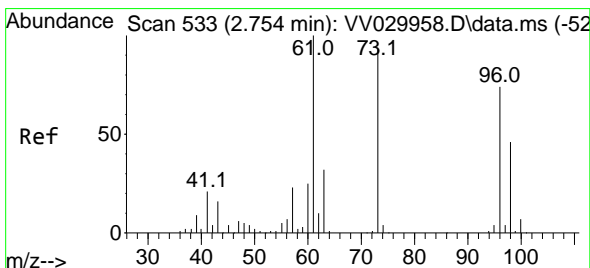
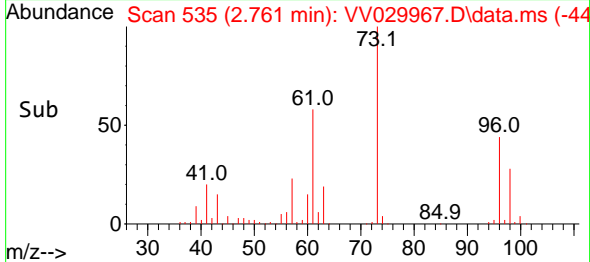
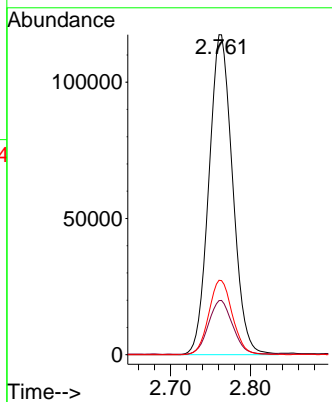
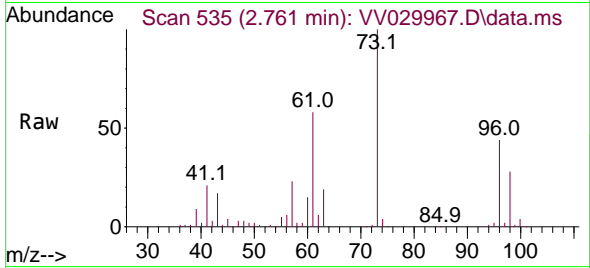


#17
 Methyl tert-butyl Ether
 Concen: 5.402 ug/L
 RT: 2.761 min Scan# 51
 Delta R.T. -0.003 min
 Lab File: VV029967.D
 Acq: 26 Jan 2023 19:59

Instrument : MSVOA_V
 ClientSampleId : VSTD005395

Tgt Ion: 73 Resp: 241234

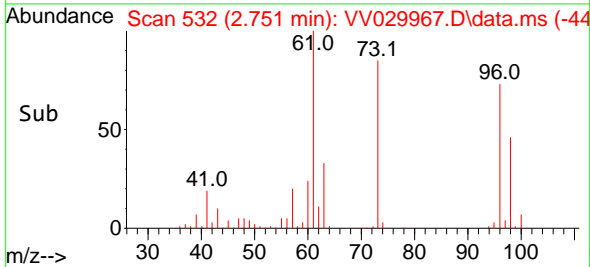
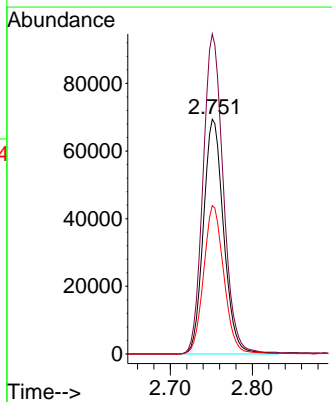
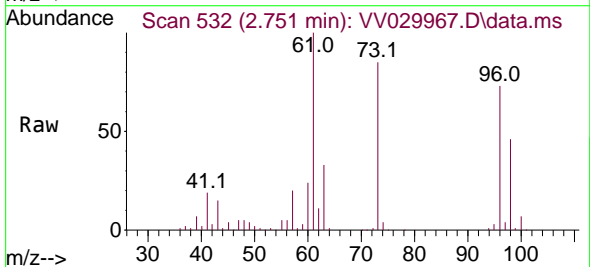
Ion	Ratio	Lower	Upper
73	100		
43	17.2	13.0	19.4
57	23.2	17.1	25.7

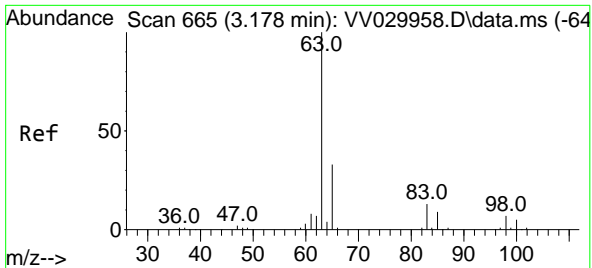


#18
 trans-1,2-Dichloroethene
 Concen: 4.953 ug/L
 RT: 2.751 min Scan# 532
 Delta R.T. -0.003 min
 Lab File: VV029967.D
 Acq: 26 Jan 2023 19:59

Tgt Ion: 96 Resp: 118892

Ion	Ratio	Lower	Upper
96	100		
61	136.4	86.1	159.9
98	63.2	43.9	81.5



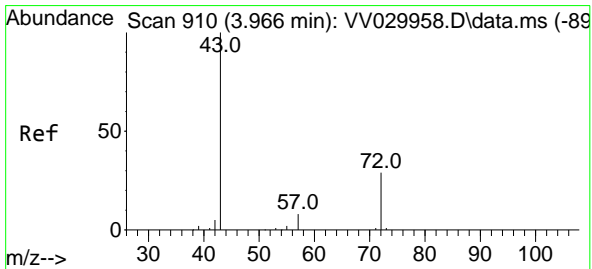
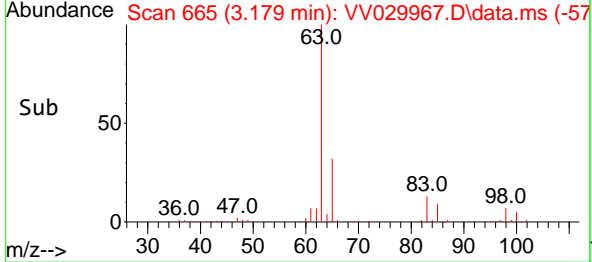
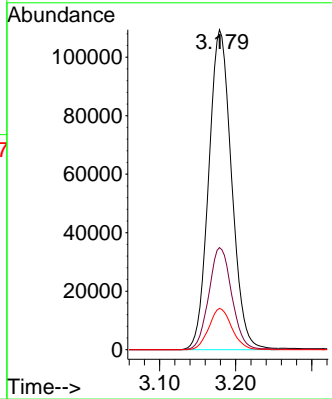
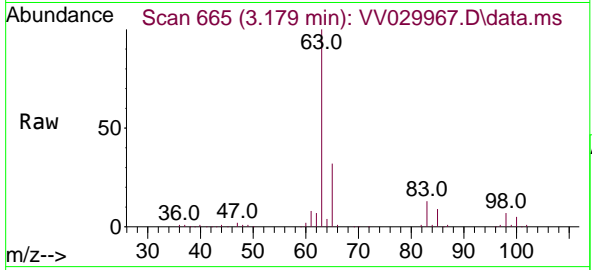


#19
 1,1-Dichloroethane
 Concen: 5.689 ug/L
 RT: 3.179 min Scan# 609
 Delta R.T. 0.000 min
 Lab File: VV029967.D
 Acq: 26 Jan 2023 19:59

Instrument : MSVOA_V
 ClientSampleId : VSTD005395

Tgt Ion: 63 Resp: 228472

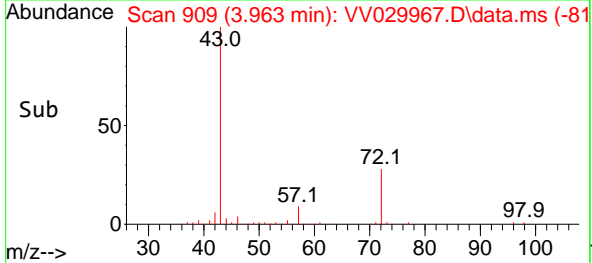
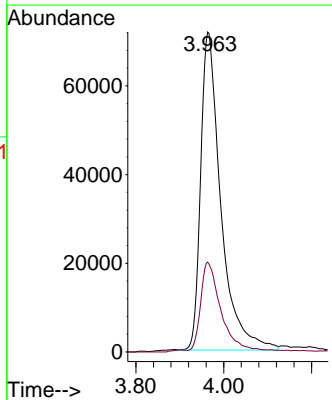
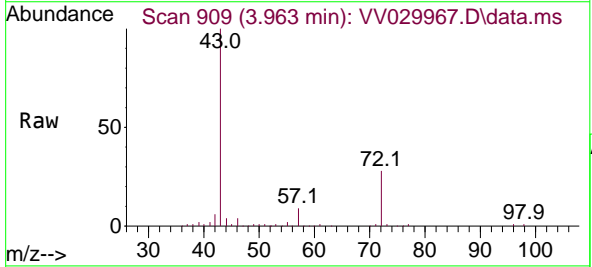
Ion	Ratio	Lower	Upper
63	100		
65	31.9	22.4	41.6
83	12.9	10.2	19.0

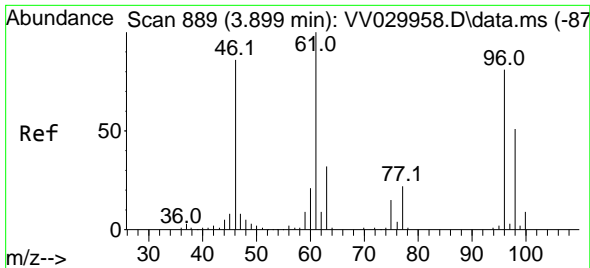


#21
 2-Butanone
 Concen: 55.109 ug/L
 RT: 3.963 min Scan# 909
 Delta R.T. -0.003 min
 Lab File: VV029967.D
 Acq: 26 Jan 2023 19:59

Tgt Ion: 43 Resp: 229110

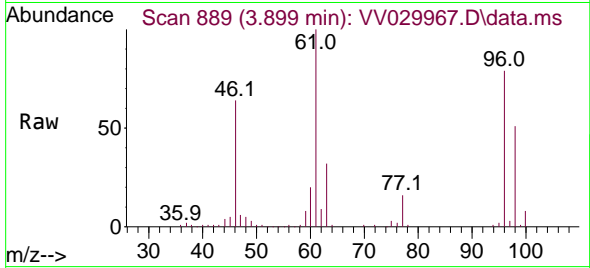
Ion	Ratio	Lower	Upper
43	100		
72	27.0	13.9	41.6





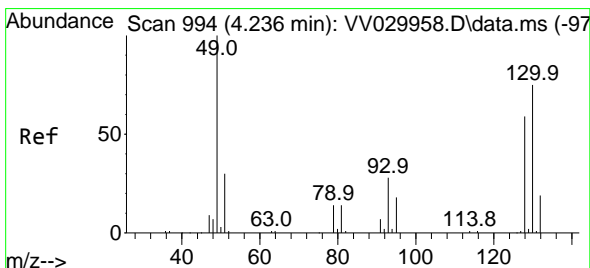
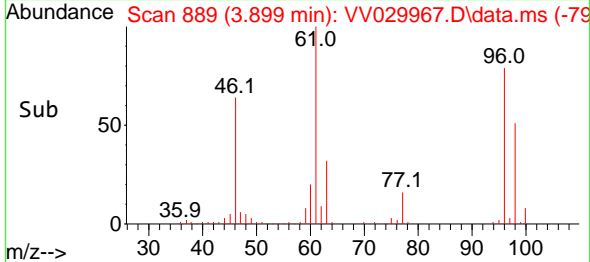
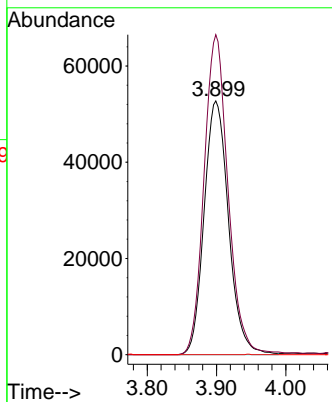
#22
 cis-1,2-Dichloroethene
 Concen: 5.060 ug/L
 RT: 3.899 min Scan# 889
 Delta R.T. 0.000 min
 Lab File: VV029967.D
 Acq: 26 Jan 2023 19:59

Instrument : MSVOA_V
 ClientSampleId : VSTD005395



Tgt Ion: 96 Resp: 129440

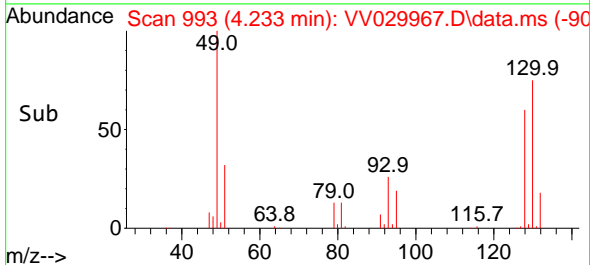
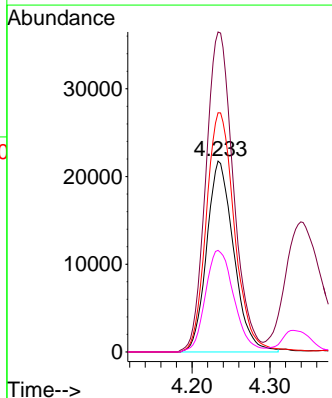
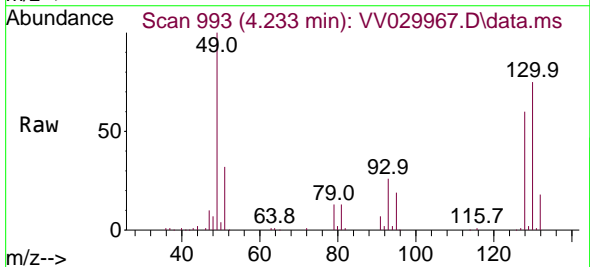
Ion	Ratio	Lower	Upper
96	100		
61	126.1	80.0	148.6
68	0.0	0.0	0.0

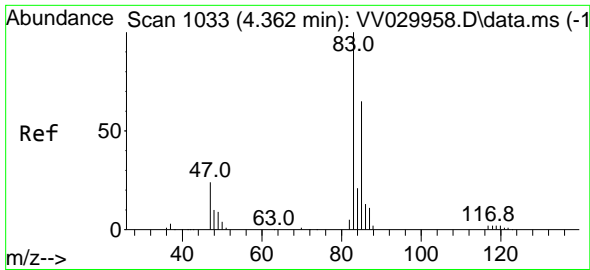


#23
 Bromochloromethane
 Concen: 4.964 ug/L
 RT: 4.233 min Scan# 993
 Delta R.T. -0.003 min
 Lab File: VV029967.D
 Acq: 26 Jan 2023 19:59

Tgt Ion: 128 Resp: 52433

Ion	Ratio	Lower	Upper
128	100		
49	167.6	91.2	169.4
130	125.3	87.0	161.6
51	53.2	35.8	53.6

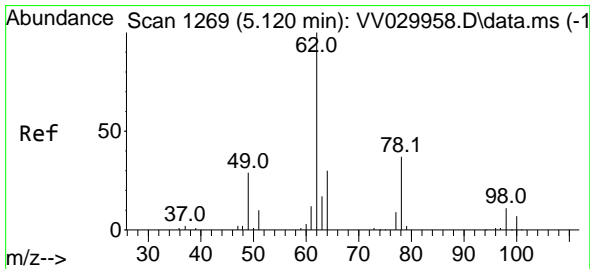
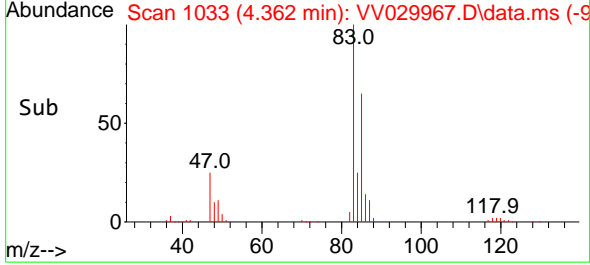
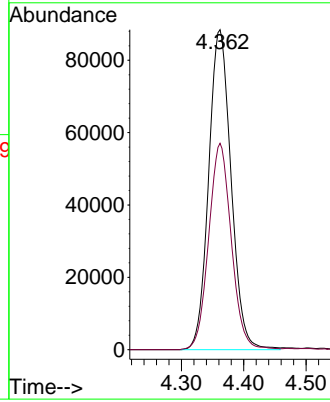
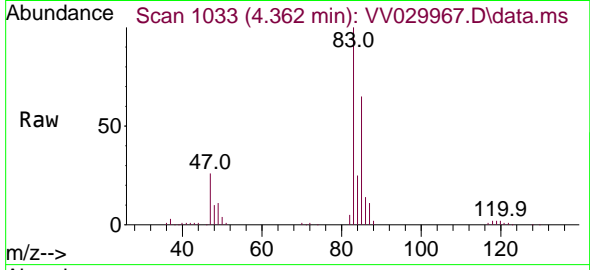




#25
 Chloroform
 Concen: 5.055 ug/L
 RT: 4.362 min Scan# 1033
 Delta R.T. 0.000 min
 Lab File: VV029967.D
 Acq: 26 Jan 2023 19:59

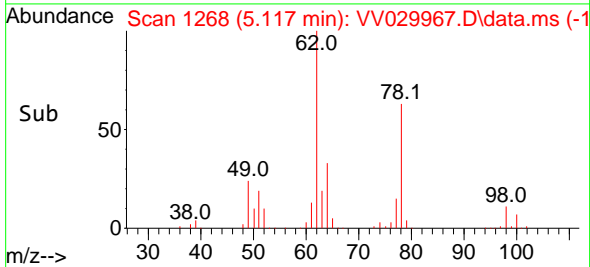
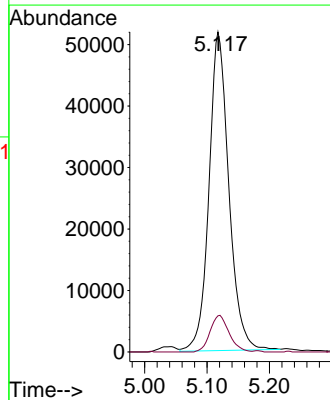
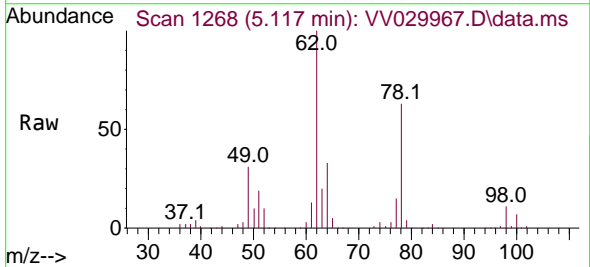
Instrument : MSVOA_V
 ClientSampleId : VSTD005395

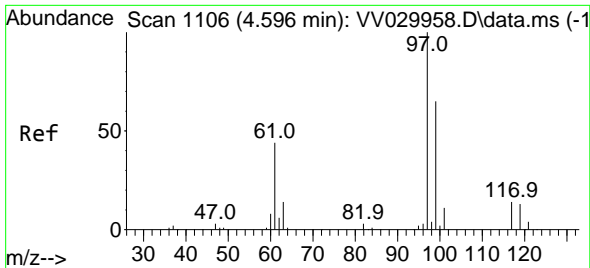
Tgt Ion: 83 Resp: 220664
 Ion Ratio Lower Upper
 83 100
 85 64.5 46.5 86.5



#27
 1,2-Dichloroethane
 Concen: 5.399 ug/L
 RT: 5.117 min Scan# 1268
 Delta R.T. -0.003 min
 Lab File: VV029967.D
 Acq: 26 Jan 2023 19:59

Tgt Ion: 62 Resp: 114517
 Ion Ratio Lower Upper
 62 100
 98 11.3 8.9 13.3



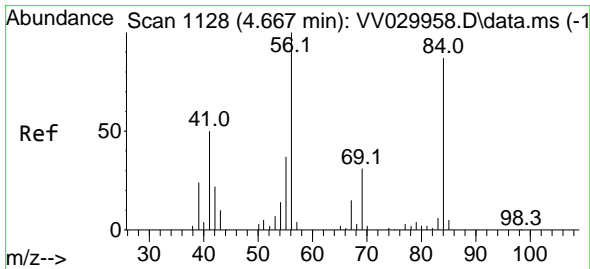
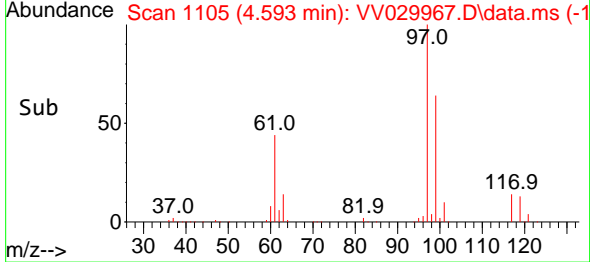
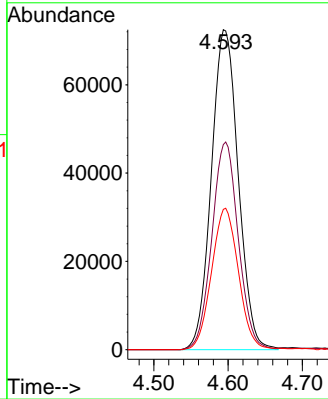
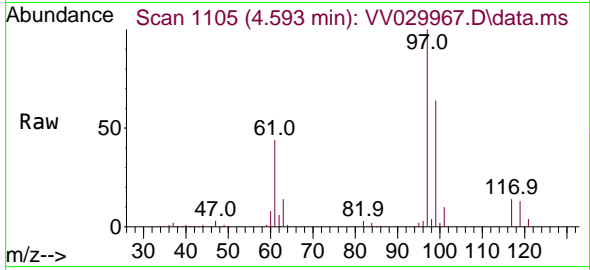


#29
 1,1,1-Trichloroethane
 Concen: 5.137 ug/L
 RT: 4.593 min Scan# 1105
 Delta R.T. -0.003 min
 Lab File: VV029967.D
 Acq: 26 Jan 2023 19:59

Instrument : MSVOA_V
 ClientSampleId : VSTD005395

Tgt Ion: 97 Resp: 182714

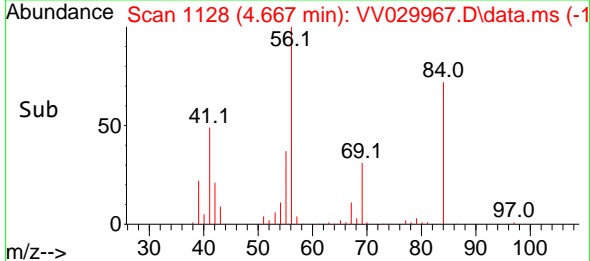
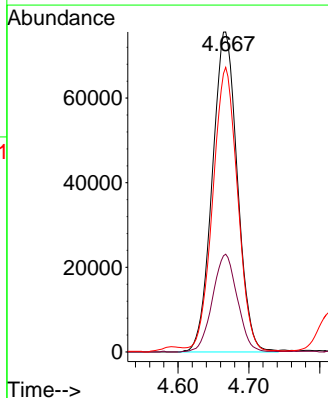
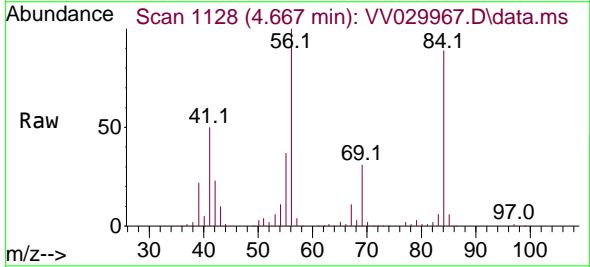
Ion	Ratio	Lower	Upper
97	100		
99	63.8	51.3	76.9
61	44.3	31.6	47.4

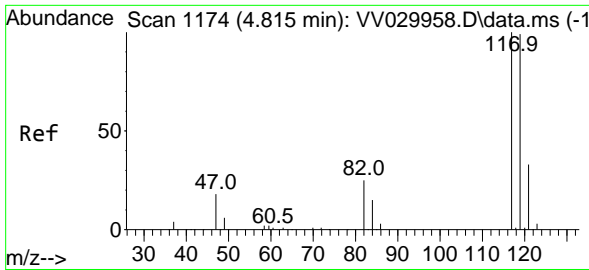


#30
 Cyclohexane
 Concen: 5.529 ug/L
 RT: 4.667 min Scan# 1128
 Delta R.T. 0.000 min
 Lab File: VV029967.D
 Acq: 26 Jan 2023 19:59

Tgt Ion: 56 Resp: 186184

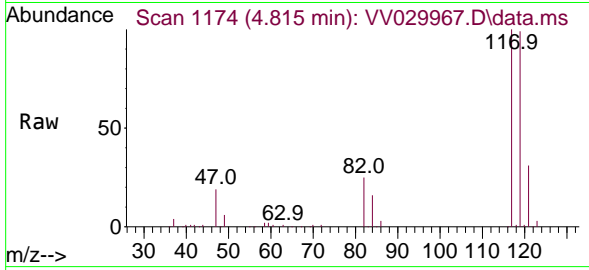
Ion	Ratio	Lower	Upper
56	100		
69	30.2	26.7	40.1
84	87.4	73.8	110.8



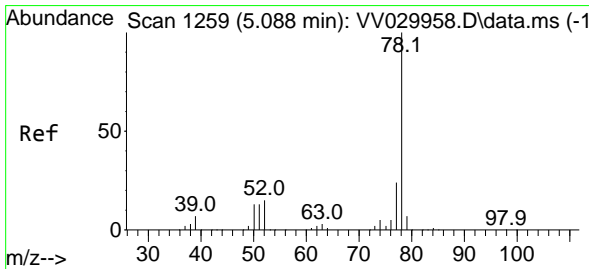
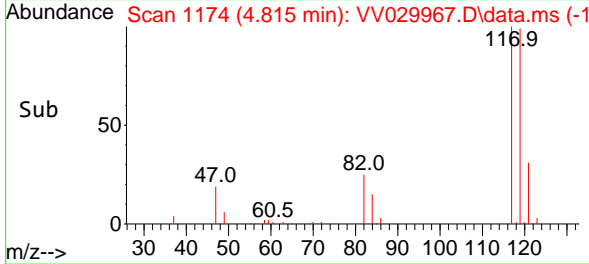
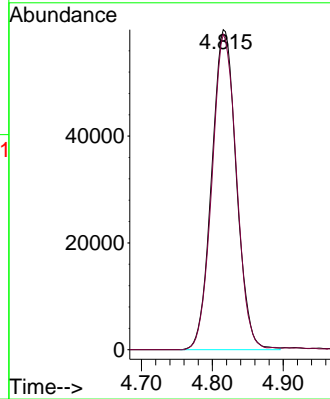


#31
 Carbon tetrachloride
 Concen: 4.695 ug/L
 RT: 4.815 min Scan# 1174
 Delta R.T. 0.000 min
 Lab File: VV029967.D
 Acq: 26 Jan 2023 19:59

Instrument : MSVOA_V
 ClientSampleId : VSTD005395

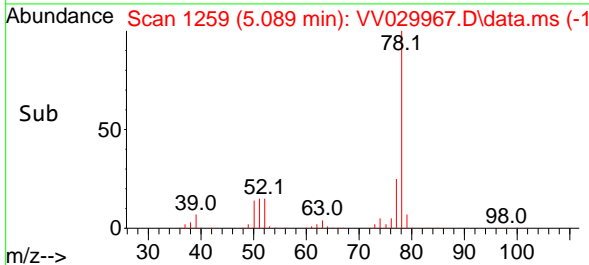
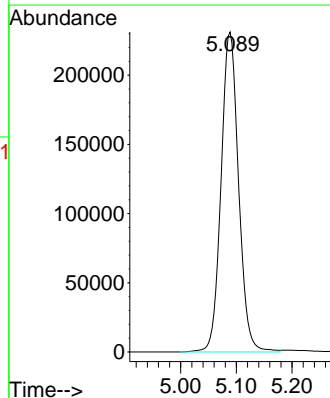
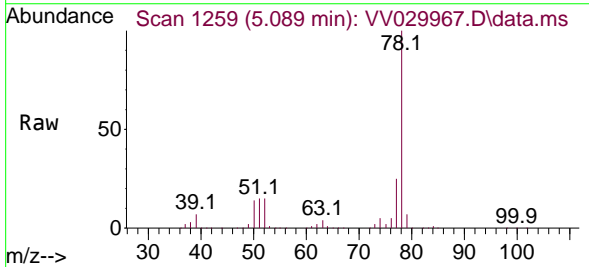


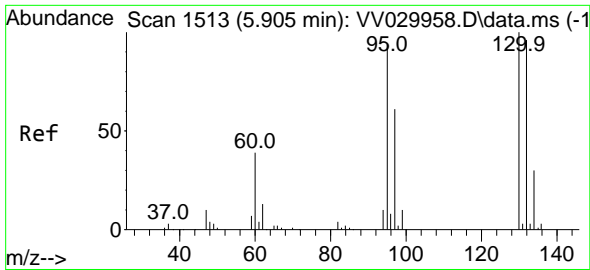
Tgt Ion:117 Resp: 145320
 Ion Ratio Lower Upper
 117 100
 119 97.3 76.6 114.8



#33
 Benzene
 Concen: 5.583 ug/L
 RT: 5.089 min Scan# 1259
 Delta R.T. 0.000 min
 Lab File: VV029967.D
 Acq: 26 Jan 2023 19:59

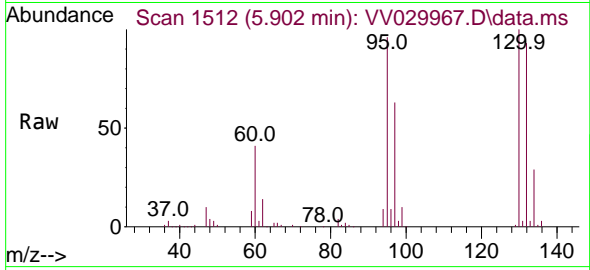
Tgt Ion: 78 Resp: 505611





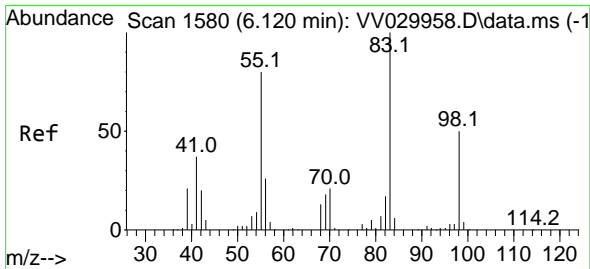
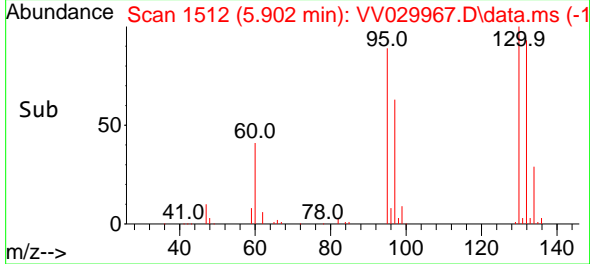
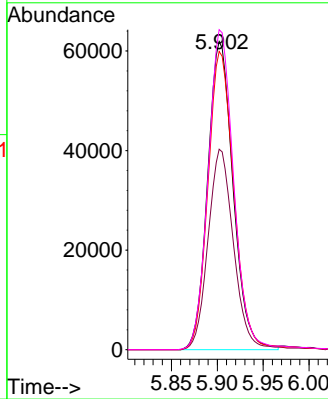
#34
 Trichloroethene
 Concen: 5.213 ug/L
 RT: 5.902 min Scan# 1512
 Delta R.T. -0.003 min
 Lab File: VV029967.D
 Acq: 26 Jan 2023 19:59

Instrument : MSVOA_V
 ClientSampleId : VSTD005395



Tgt Ion: 95 Resp: 119645

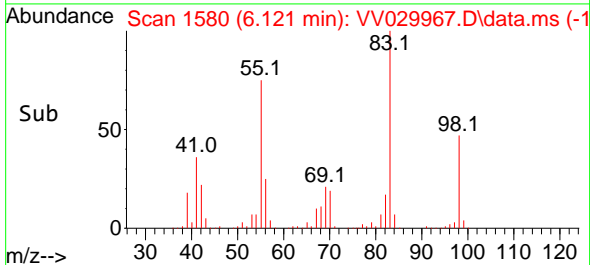
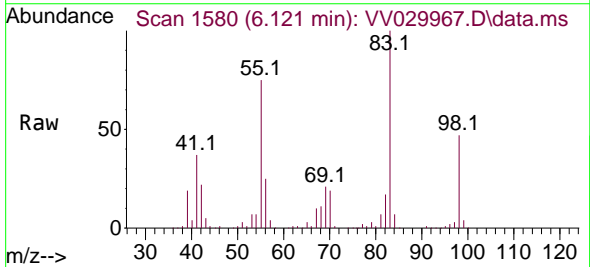
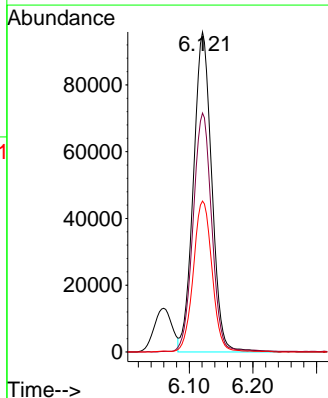
Ion	Ratio	Lower	Upper
95	100		
97	65.0	44.9	83.3
132	96.8	71.8	133.4
130	103.8	75.3	139.8

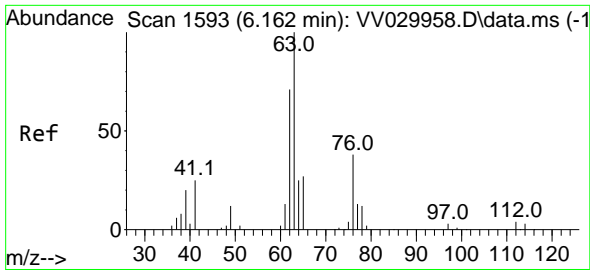


#35
 Methylcyclohexane
 Concen: 4.954 ug/L
 RT: 6.121 min Scan# 1580
 Delta R.T. 0.000 min
 Lab File: VV029967.D
 Acq: 26 Jan 2023 19:59

Tgt Ion: 83 Resp: 191957

Ion	Ratio	Lower	Upper
83	100		
55	75.9	57.3	85.9
98	47.6	39.0	58.6

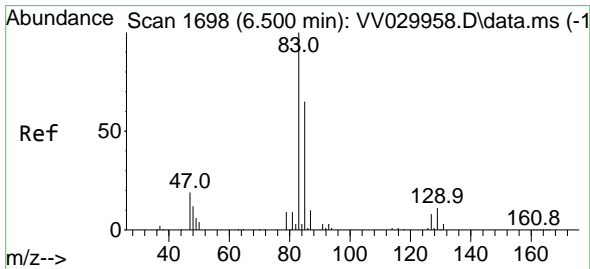
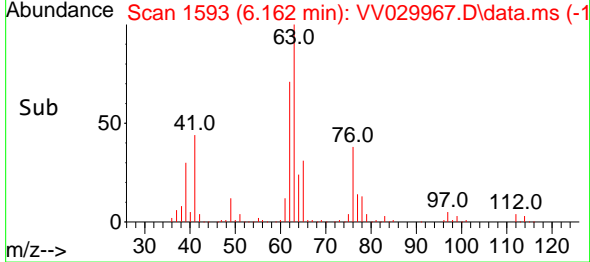
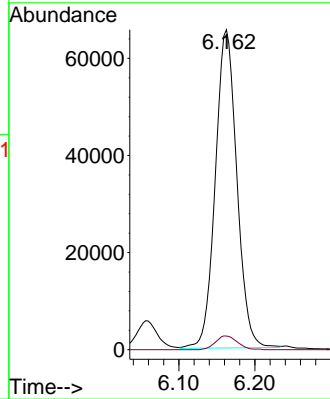
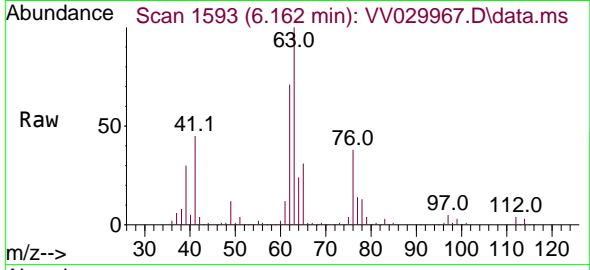




#37
 1,2-Dichloropropane
 Concen: 6.073 ug/L
 RT: 6.162 min Scan# 1593
 Delta R.T. 0.000 min
 Lab File: VV029967.D
 Acq: 26 Jan 2023 19:59

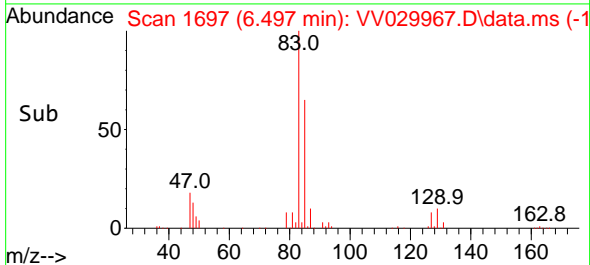
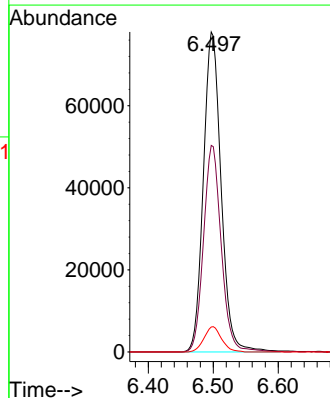
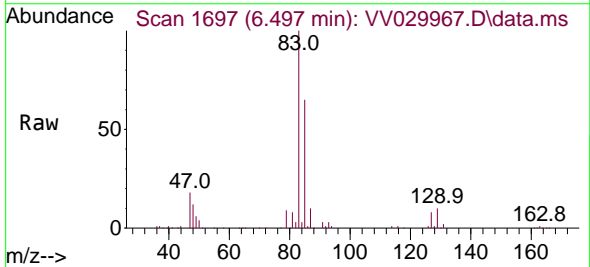
Instrument : MSVOA_V
 ClientSampleId : VSTD005395

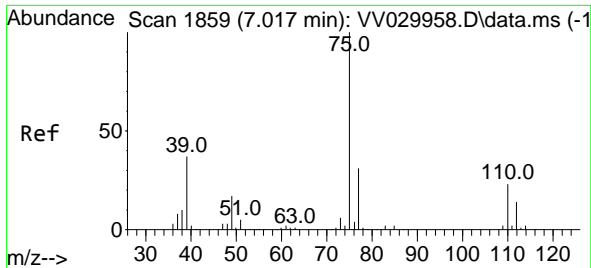
Tgt Ion: 63 Resp: 128815
 Ion Ratio Lower Upper
 63 100
 112 4.4 3.9 5.9



#38
 Bromodichloromethane
 Concen: 5.400 ug/L
 RT: 6.497 min Scan# 1697
 Delta R.T. -0.003 min
 Lab File: VV029967.D
 Acq: 26 Jan 2023 19:59

Tgt Ion: 83 Resp: 148132
 Ion Ratio Lower Upper
 83 100
 85 64.6 43.2 80.2
 127 7.8 7.0 10.6

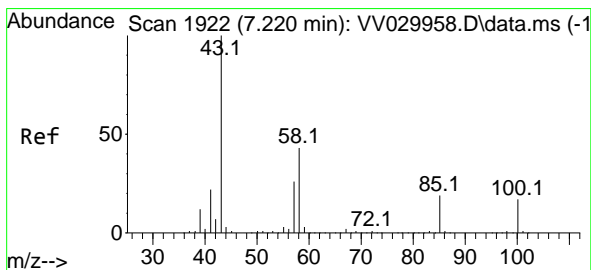
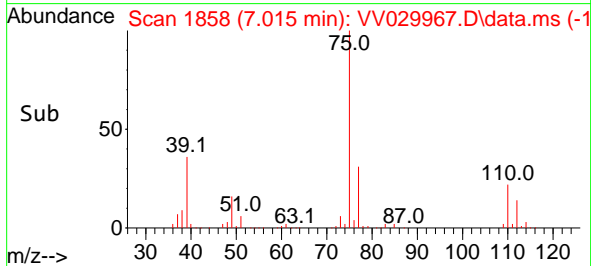
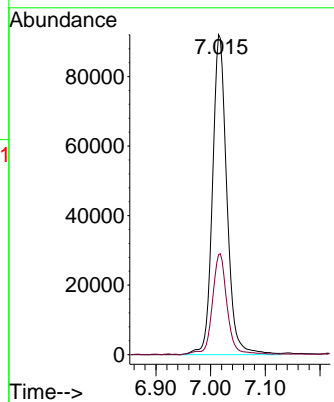
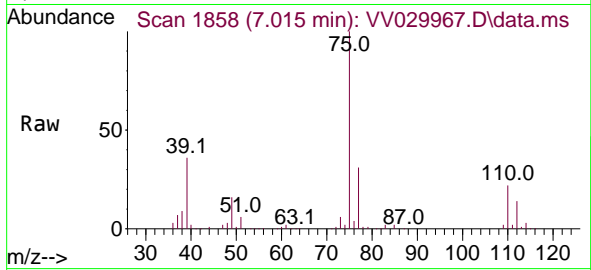




#39
 cis-1,3-Dichloropropene
 Concen: 5.905 ug/L
 RT: 7.015 min Scan# 1859
 Delta R.T. -0.003 min
 Lab File: VV029967.D
 Acq: 26 Jan 2023 19:59

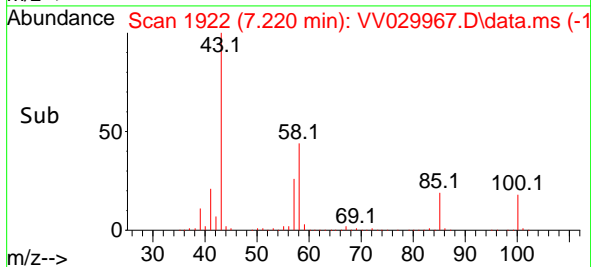
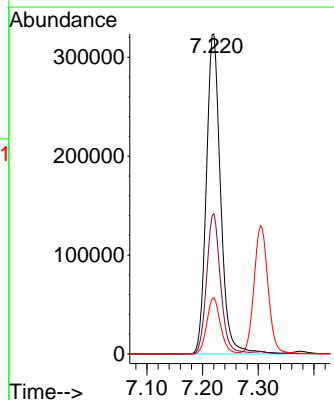
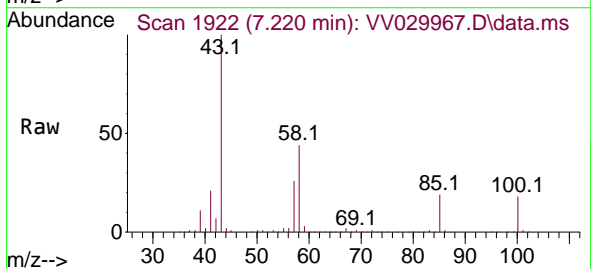
Instrument : MSVOA_V
 ClientSampleId : VSTD005395

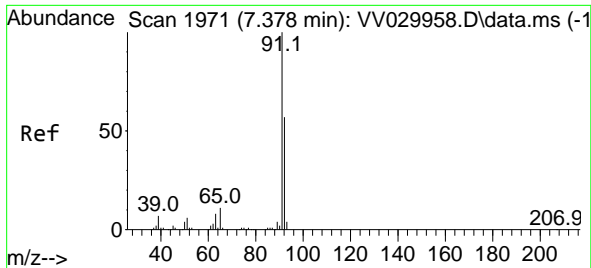
Tgt Ion: 75 Resp: 167953
 Ion Ratio Lower Upper
 75 100
 77 31.3 22.4 41.6



#40
 4-Methyl-2-pentanone
 Concen: 63.536 ug/L
 RT: 7.220 min Scan# 1922
 Delta R.T. 0.000 min
 Lab File: VV029967.D
 Acq: 26 Jan 2023 19:59

Tgt Ion: 43 Resp: 575083
 Ion Ratio Lower Upper
 43 100
 58 43.0 36.7 55.1
 100 16.9 15.6 23.4

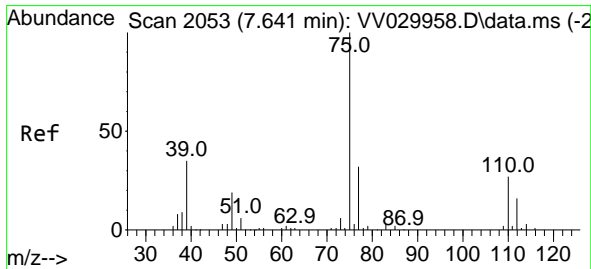
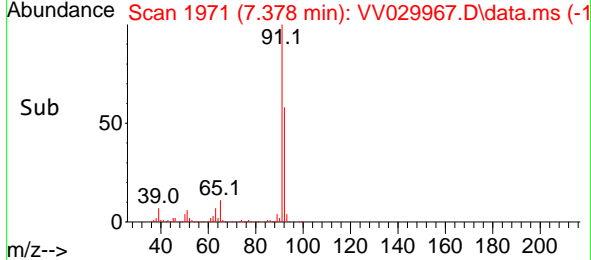
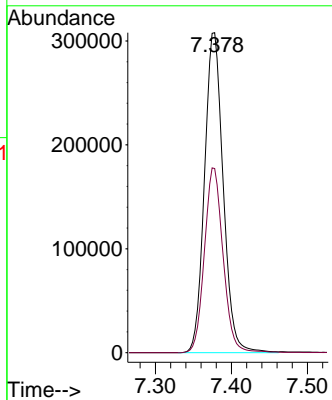
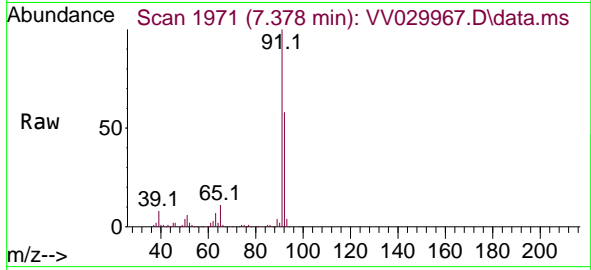




#42
 Toluene
 Concen: 5.384 ug/L
 RT: 7.378 min Scan# 1971
 Delta R.T. 0.000 min
 Lab File: VV029967.D
 Acq: 26 Jan 2023 19:59

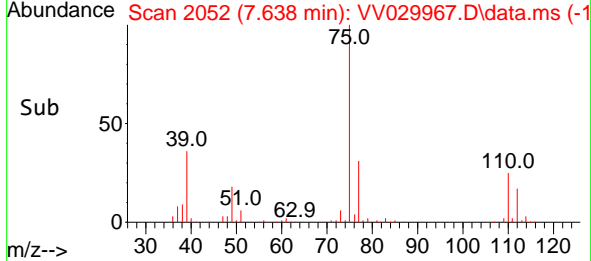
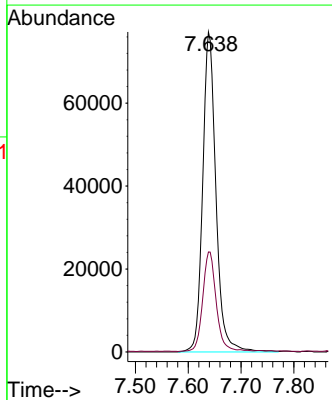
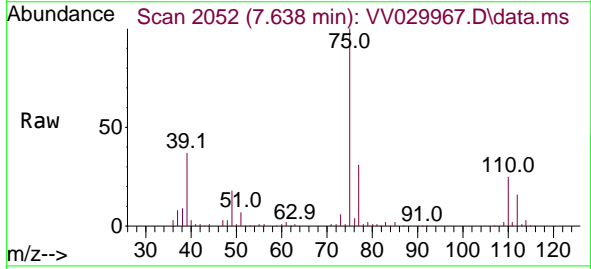
Instrument : MSVOA_V
 ClientSampleId : VSTD005395

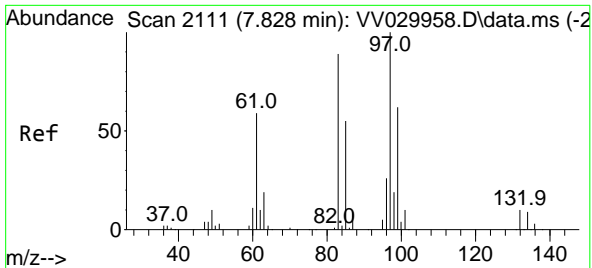
Tgt Ion: 91 Resp: 525912
 Ion Ratio Lower Upper
 91 100
 92 57.6 40.6 75.4



#44
 trans-1,3-Dichloropropene
 Concen: 5.871 ug/L
 RT: 7.638 min Scan# 2052
 Delta R.T. -0.003 min
 Lab File: VV029967.D
 Acq: 26 Jan 2023 19:59

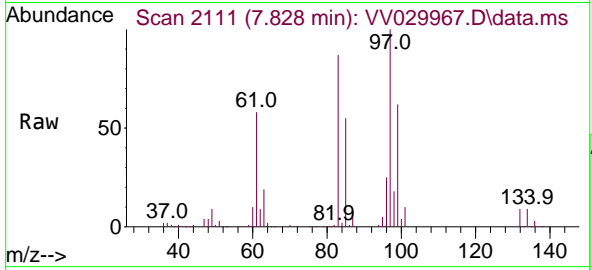
Tgt Ion: 75 Resp: 134578
 Ion Ratio Lower Upper
 75 100
 77 31.3 21.9 40.7





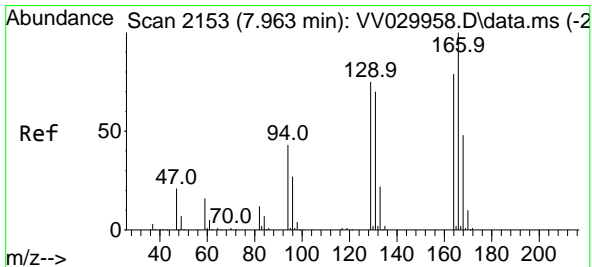
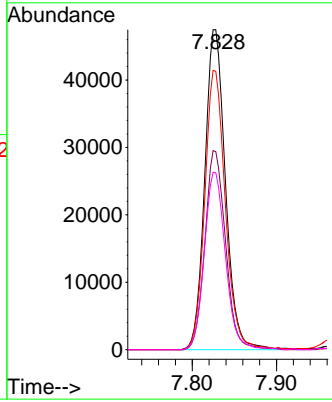
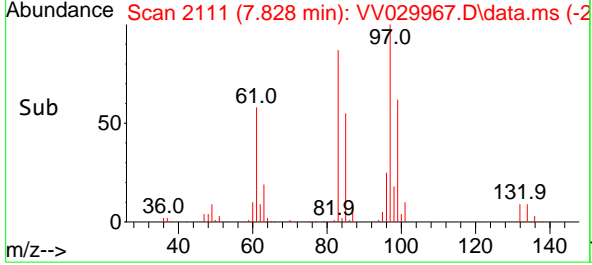
#45
 1,1,2-Trichloroethane
 Concen: 5.301 ug/L
 RT: 7.828 min Scan# 2111
 Delta R.T. 0.000 min
 Lab File: VV029967.D
 Acq: 26 Jan 2023 19:59

Instrument : MSVOA_V
 ClientSampleId : VSTD005395

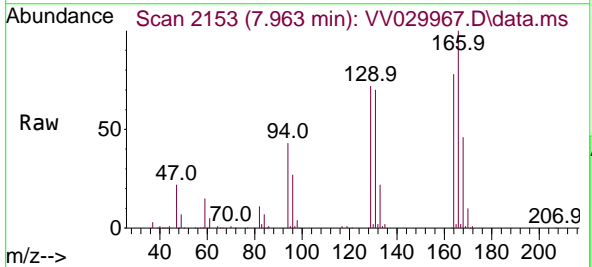


Tgt Ion: 97 Resp: 81013

Ion	Ratio	Lower	Upper
97	100		
99	61.9	41.9	77.7
83	87.0	58.7	109.1
85	55.3	37.7	69.9

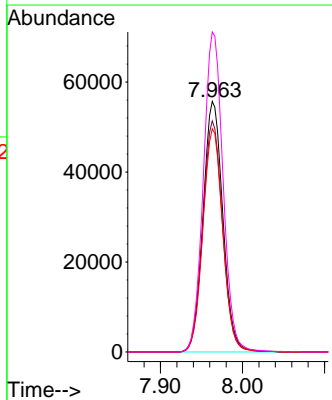
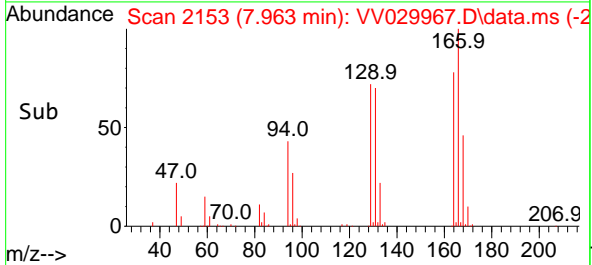


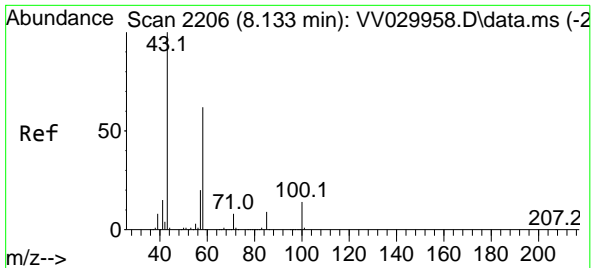
#47
 Tetrachloroethene
 Concen: 4.849 ug/L
 RT: 7.963 min Scan# 2153
 Delta R.T. 0.000 min
 Lab File: VV029967.D
 Acq: 26 Jan 2023 19:59



Tgt Ion: 164 Resp: 93705

Ion	Ratio	Lower	Upper
164	100		
129	92.2	64.5	119.7
131	89.1	62.9	116.7
166	127.7	90.7	168.5



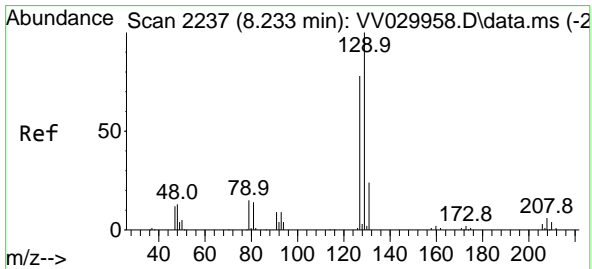
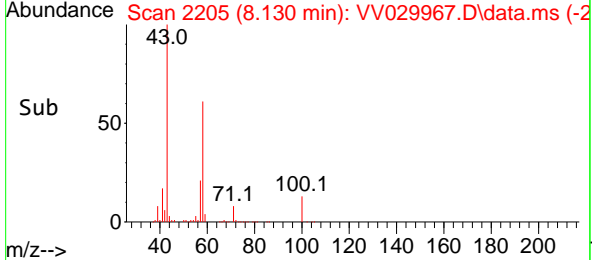
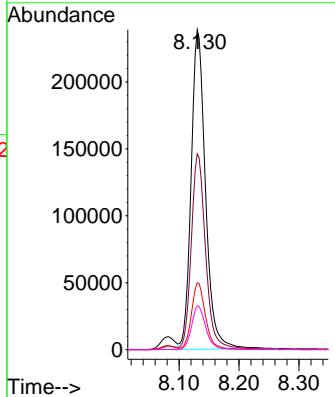
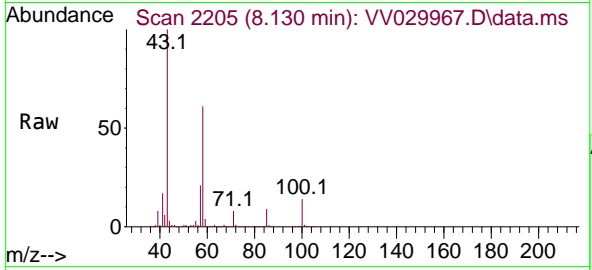


#48
 2-Hexanone
 Concen: 61.607 ug/L
 RT: 8.130 min Scan# 21
 Delta R.T. -0.003 min
 Lab File: VV029967.D
 Acq: 26 Jan 2023 19:59

Instrument : MSVOA_V
 ClientSampleId : VSTD005395

Tgt Ion: 43 Resp: 398567

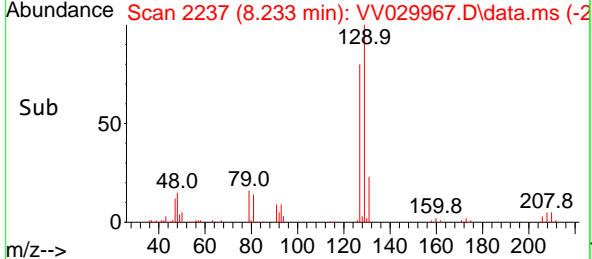
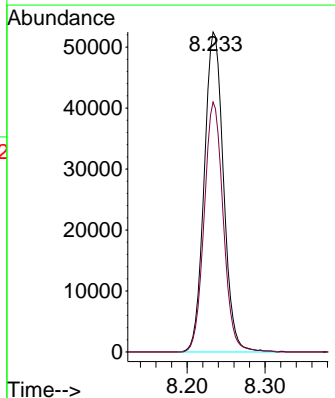
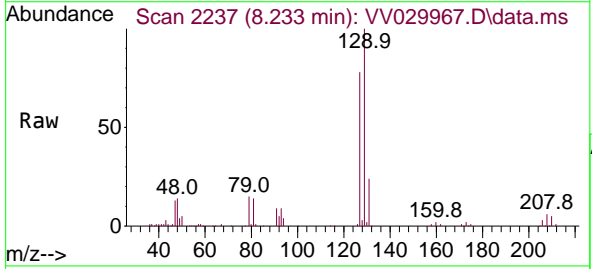
Ion	Ratio	Lower	Upper
43	100		
58	60.7	51.4	77.2
57	20.2	17.0	25.6
100	13.5	12.5	18.7

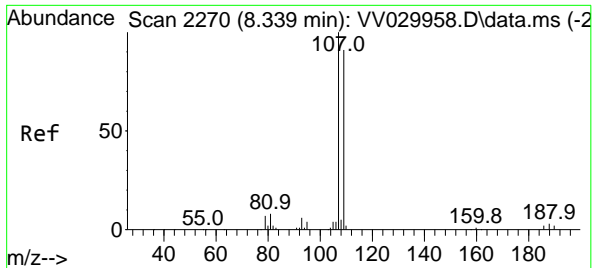


#49
 Dibromochloromethane
 Concen: 5.024 ug/L
 RT: 8.233 min Scan# 2237
 Delta R.T. 0.000 min
 Lab File: VV029967.D
 Acq: 26 Jan 2023 19:59

Tgt Ion: 129 Resp: 90099

Ion	Ratio	Lower	Upper
129	100		
127	78.1	54.1	100.5



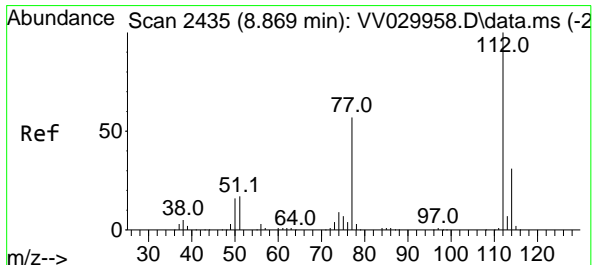
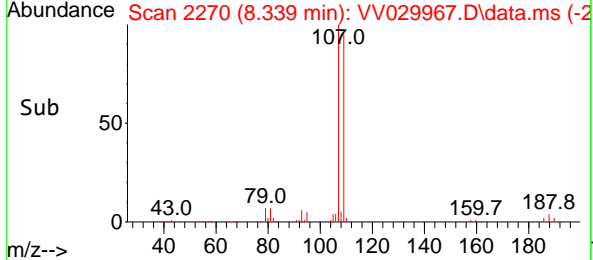
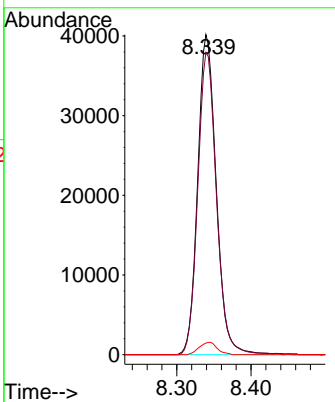
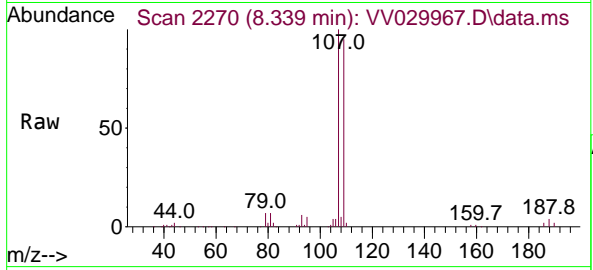


#50
 1,2-Dibromoethane
 Concen: 5.244 ug/L
 RT: 8.339 min Scan# 21
 Delta R.T. 0.000 min
 Lab File: VV029967.D
 Acq: 26 Jan 2023 19:59

Instrument : MSVOA_V
 ClientSampleId : VSTD005395

Tgt Ion:107 Resp: 69563

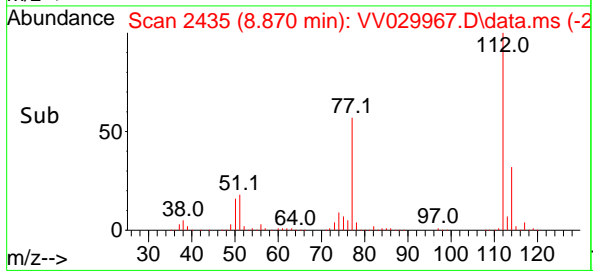
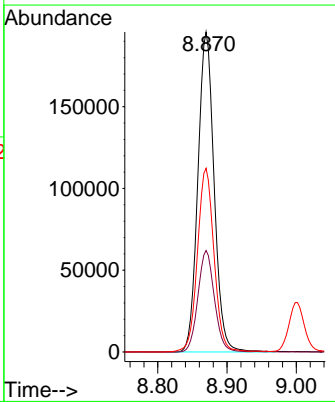
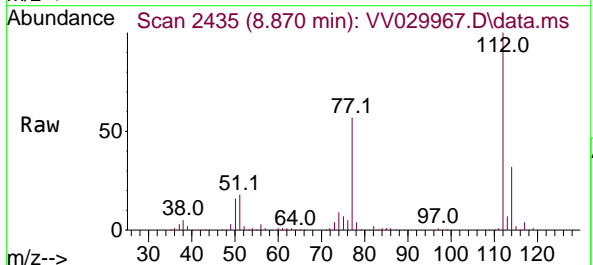
Ion	Ratio	Lower	Upper
107	100		
109	94.5	66.1	122.7
188	3.6	2.9	4.3

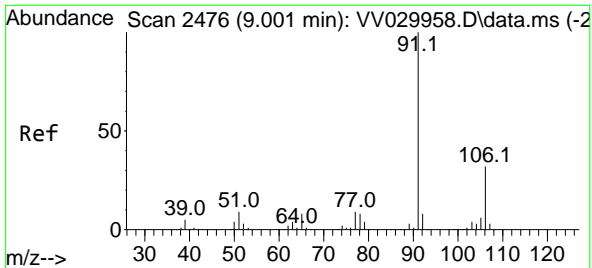


#51
 Chlorobenzene
 Concen: 5.124 ug/L
 RT: 8.870 min Scan# 2435
 Delta R.T. 0.000 min
 Lab File: VV029967.D
 Acq: 26 Jan 2023 19:59

Tgt Ion:112 Resp: 317799

Ion	Ratio	Lower	Upper
112	100		
114	31.7	22.5	41.9
77	57.4	46.1	69.1

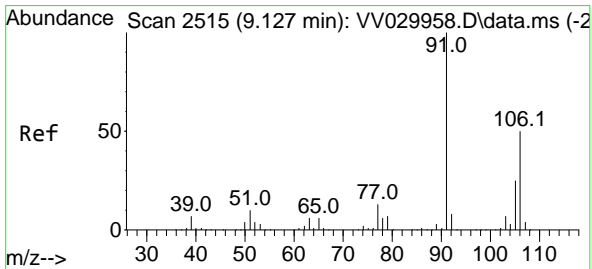
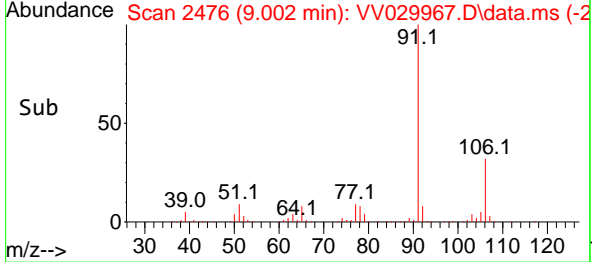
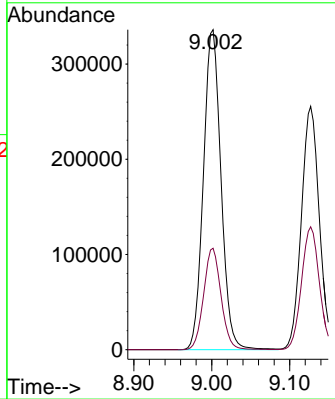
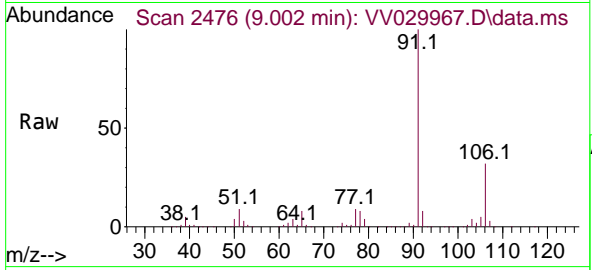




#52
 Ethylbenzene
 Concen: 5.153 ug/L
 RT: 9.002 min Scan# 2476
 Delta R.T. 0.000 min
 Lab File: VV029967.D
 Acq: 26 Jan 2023 19:59

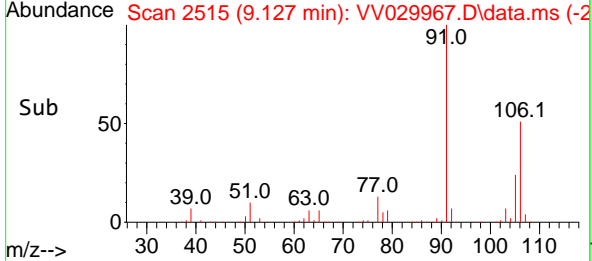
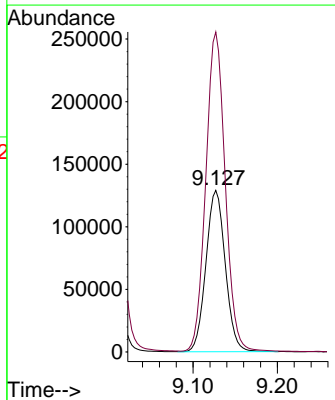
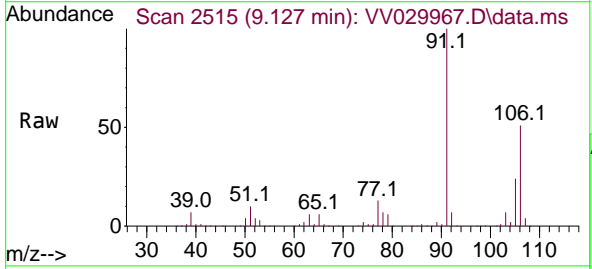
Instrument : MSVOA_V
 ClientSampleId : VSTD005395

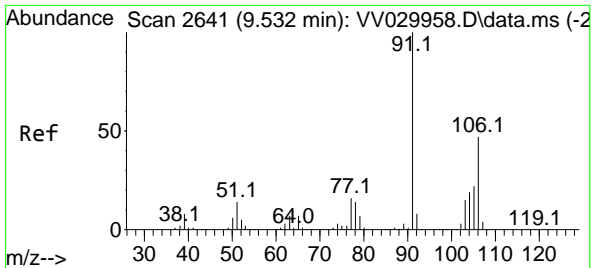
Tgt Ion: 91 Resp: 526752
 Ion Ratio Lower Upper
 91 100
 106 31.7 21.9 40.7



#53
 m,p-Xylene
 Concen: 5.089 ug/L
 RT: 9.127 min Scan# 2515
 Delta R.T. 0.000 min
 Lab File: VV029967.D
 Acq: 26 Jan 2023 19:59

Tgt Ion: 106 Resp: 205931
 Ion Ratio Lower Upper
 106 100
 91 198.0 138.7 257.7

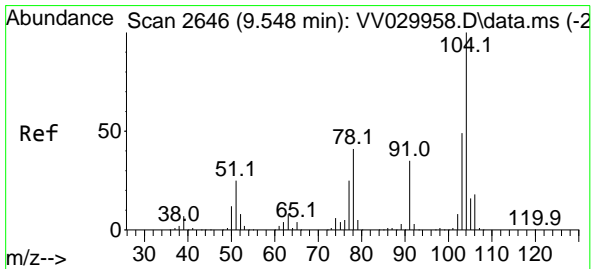
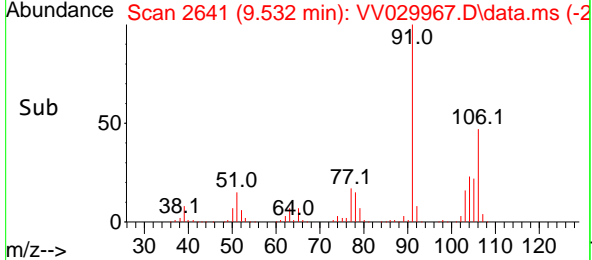
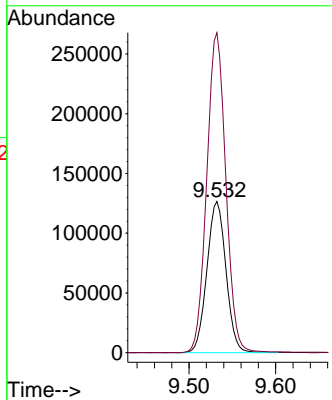
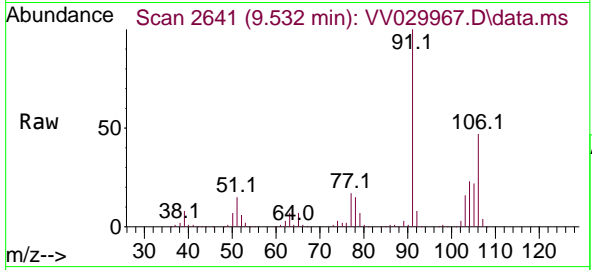




#54
 o-Xylene
 Concen: 5.053 ug/L
 RT: 9.532 min Scan# 2641
 Delta R.T. 0.000 min
 Lab File: VV029967.D
 Acq: 26 Jan 2023 19:59

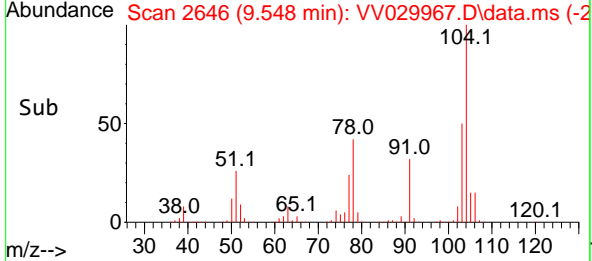
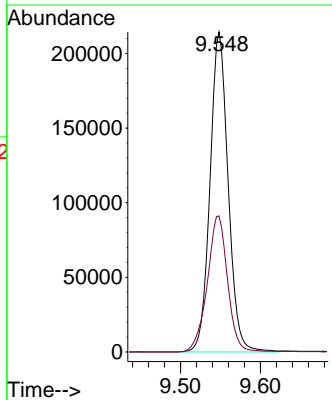
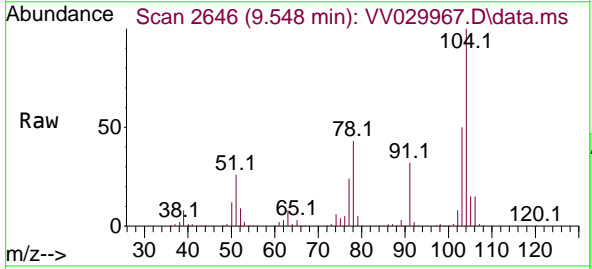
Instrument : MSVOA_V
 ClientSampleId : VSTD005395

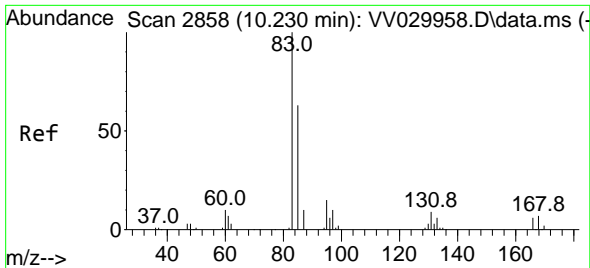
Tgt Ion:106 Resp: 194041
 Ion Ratio Lower Upper
 106 100
 91 211.7 147.7 274.3



#55
 Styrene
 Concen: 5.117 ug/L
 RT: 9.548 min Scan# 2646
 Delta R.T. 0.000 min
 Lab File: VV029967.D
 Acq: 26 Jan 2023 19:59

Tgt Ion:104 Resp: 338002
 Ion Ratio Lower Upper
 104 100
 78 42.5 28.6 53.2



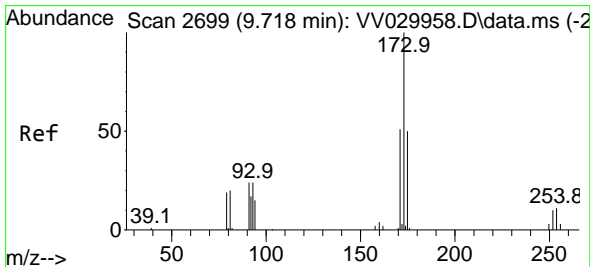
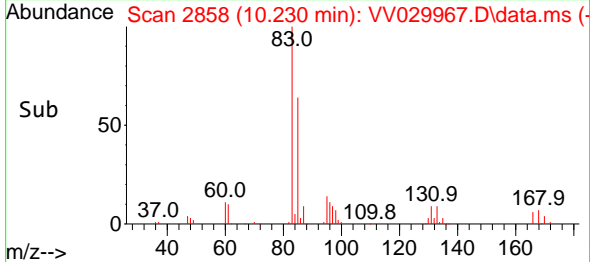
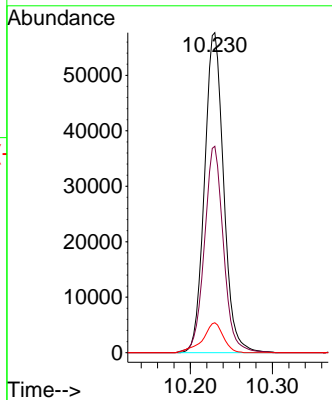
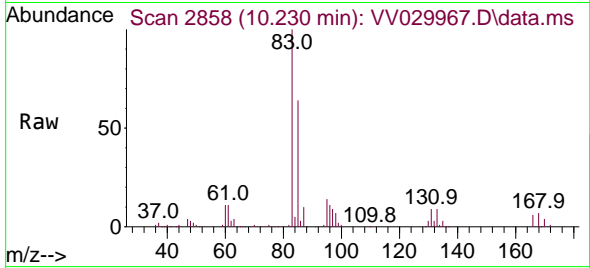


#57
 1,1,2,2-Tetrachloroethane
 Concen: 5.503 ug/L
 RT: 10.230 min Scan# 2858
 Delta R.T. 0.000 min
 Lab File: VV029967.D
 Acq: 26 Jan 2023 19:59

Instrument : MSVOA_V
 ClientSampleId : VSTD005395

Tgt Ion: 83 Resp: 93407

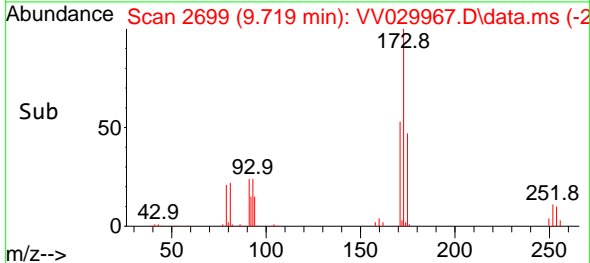
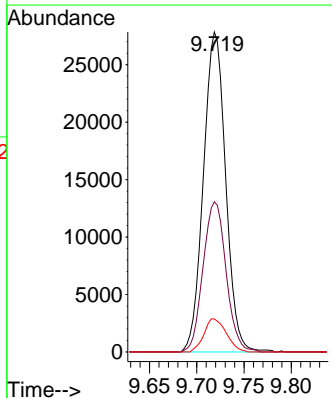
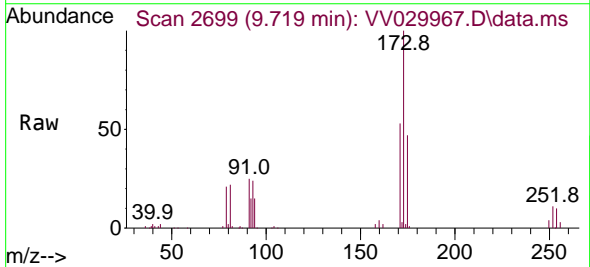
Ion	Ratio	Lower	Upper
83	100		
85	64.5	46.0	85.4
131	9.4	8.4	12.6

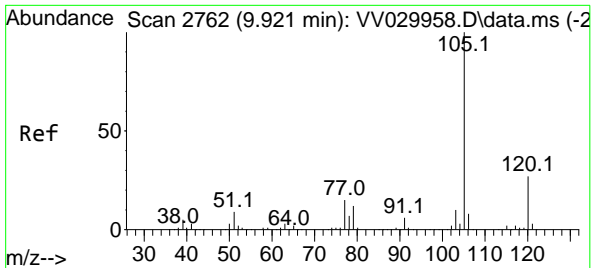


#59
 Bromoform
 Concen: 4.788 ug/L
 RT: 9.719 min Scan# 2699
 Delta R.T. 0.000 min
 Lab File: VV029967.D
 Acq: 26 Jan 2023 19:59

Tgt Ion: 173 Resp: 45572

Ion	Ratio	Lower	Upper
173	100		
175	48.5	38.6	57.8
254	10.4	7.9	11.9



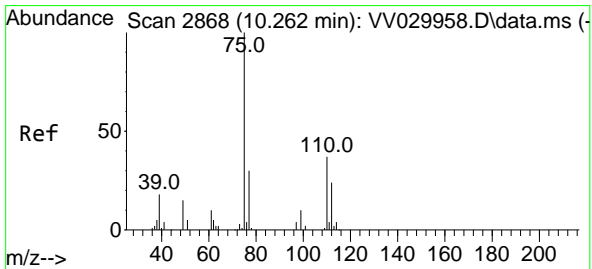
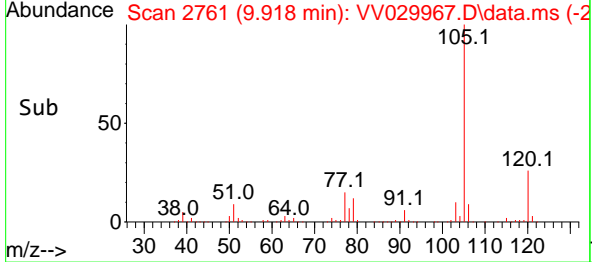
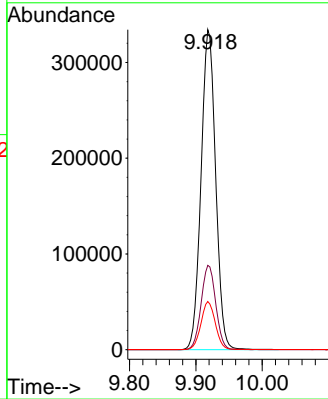
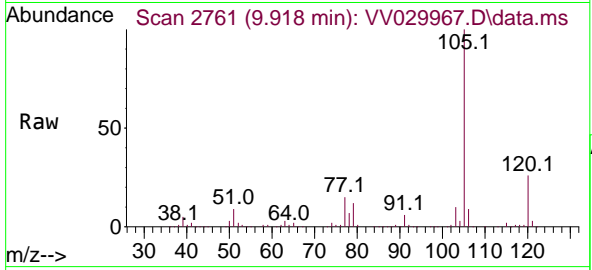


#60
 Isopropylbenzene
 Concen: 5.439 ug/L
 RT: 9.918 min Scan# 21
 Delta R.T. -0.003 min
 Lab File: VV029967.D
 Acq: 26 Jan 2023 19:59

Instrument :
 MSVOA_V
 ClientSampleId :
 VSTD005395

Tgt Ion: 105 Resp: 510940

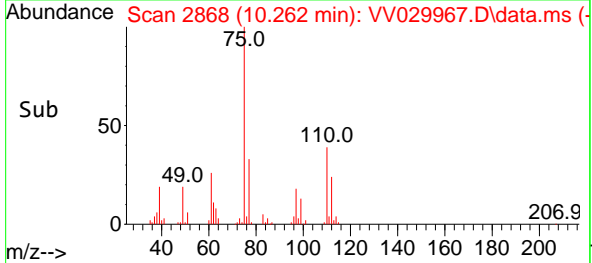
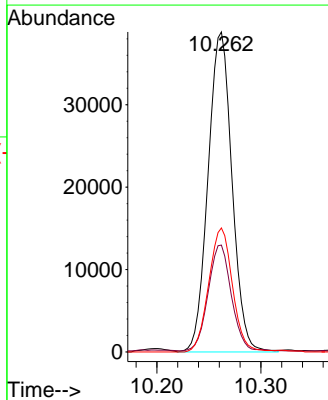
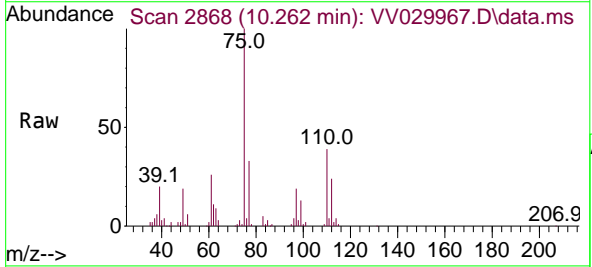
Ion	Ratio	Lower	Upper
105	100		
120	26.4	21.2	31.8
77	14.8	11.8	17.8

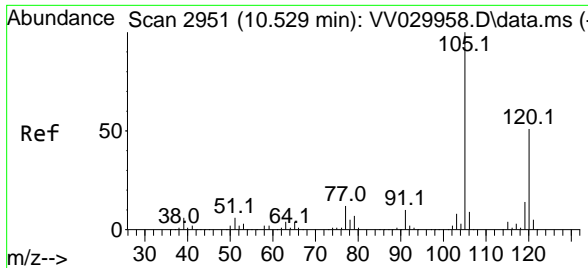


#61
 1,2,3-Trichloropropane
 Concen: 5.719 ug/L
 RT: 10.262 min Scan# 2868
 Delta R.T. 0.000 min
 Lab File: VV029967.D
 Acq: 26 Jan 2023 19:59

Tgt Ion: 75 Resp: 62231

Ion	Ratio	Lower	Upper
75	100		
77	32.3	26.5	39.7
110	38.3	31.8	47.8

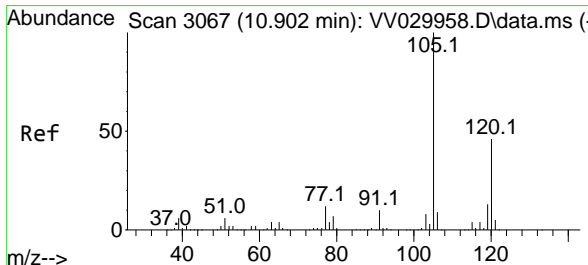
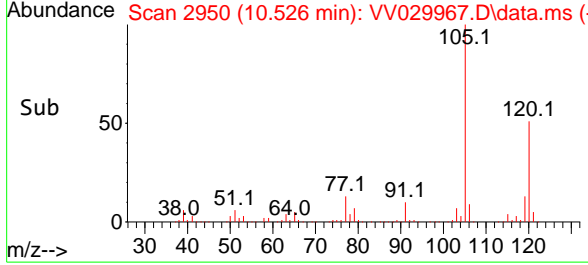
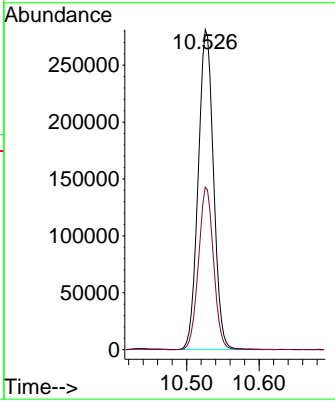
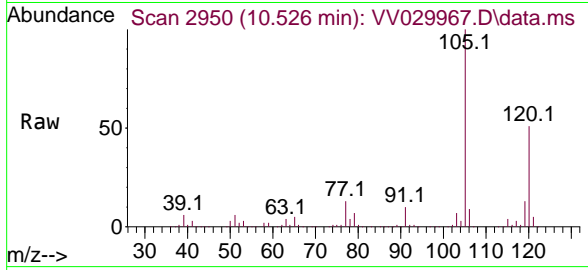




#62
 1,3,5-Trimethylbenzene
 Concen: 5.126 ug/L
 RT: 10.526 min Scan# 2951
 Delta R.T. -0.003 min
 Lab File: VV029967.D
 Acq: 26 Jan 2023 19:59

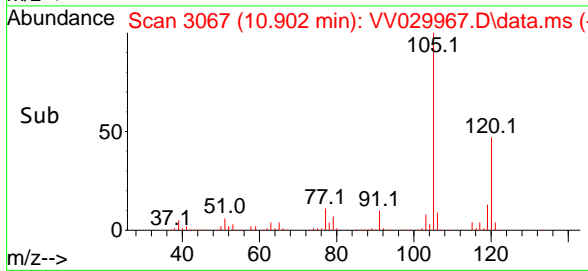
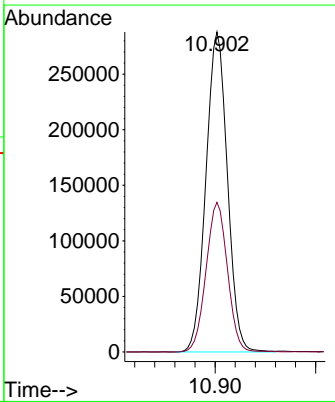
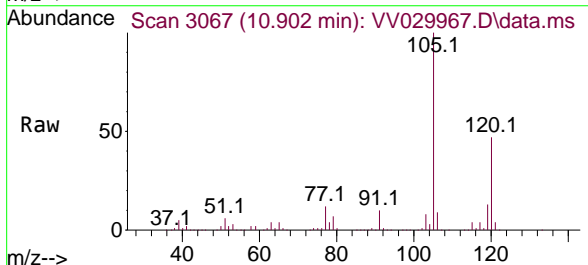
Instrument : MSVOA_V
 ClientSampleId : VSTD005395

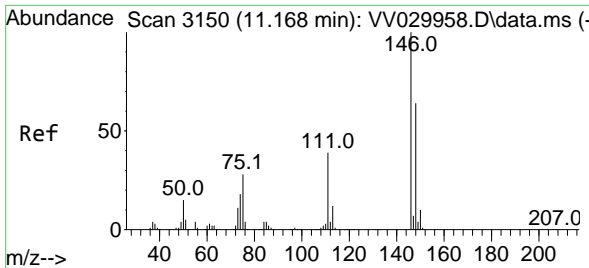
Tgt Ion:105 Resp: 412624
 Ion Ratio Lower Upper
 105 100
 120 50.1 40.1 60.1



#63
 1,2,4-Trimethylbenzene
 Concen: 5.314 ug/L
 RT: 10.902 min Scan# 3067
 Delta R.T. 0.000 min
 Lab File: VV029967.D
 Acq: 26 Jan 2023 19:59

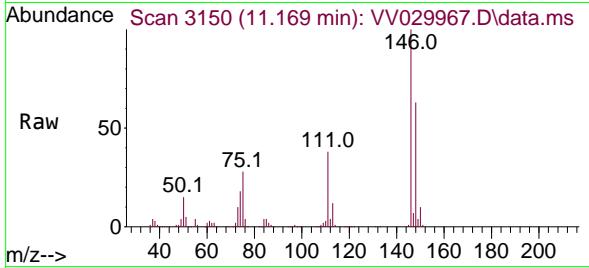
Tgt Ion:105 Resp: 426574
 Ion Ratio Lower Upper
 105 100
 120 46.7 37.4 56.0



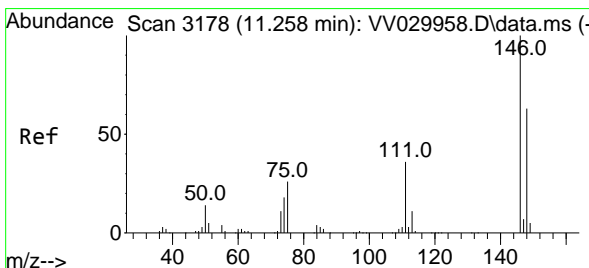
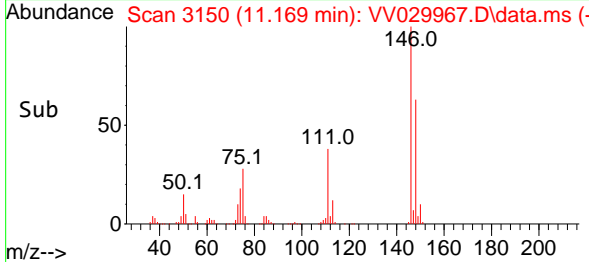
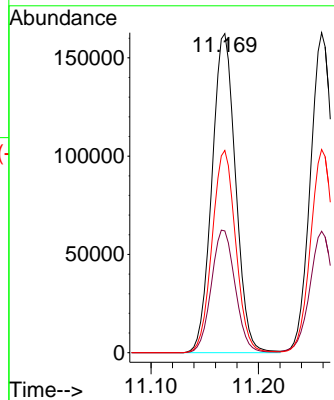


#64
 1,3-Dichlorobenzene
 Concen: 5.194 ug/L
 RT: 11.169 min Scan# 3150
 Delta R.T. 0.000 min
 Lab File: VV029967.D
 Acq: 26 Jan 2023 19:59

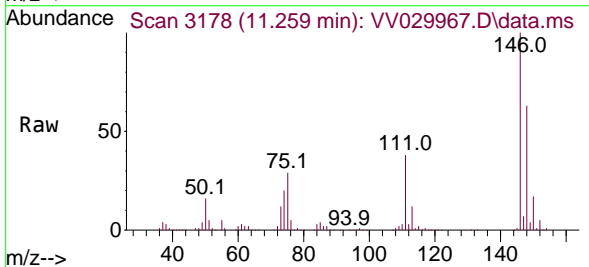
Instrument : MSVOA_V
 ClientSampleId : VSTD005395



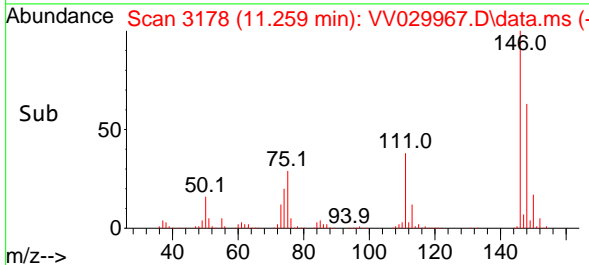
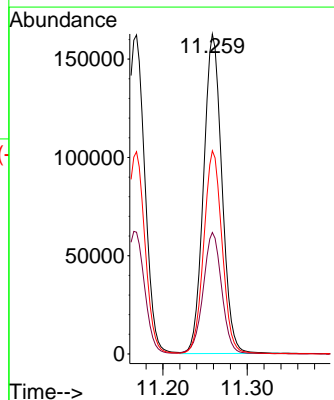
Tgt Ion:146 Resp: 247766
 Ion Ratio Lower Upper
 146 100
 111 38.2 27.2 50.6
 148 63.4 44.9 83.5

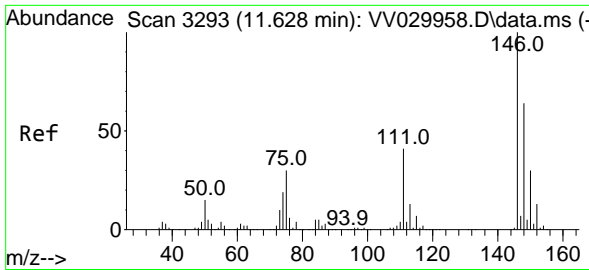


#65
 1,4-Dichlorobenzene
 Concen: 5.182 ug/L
 RT: 11.259 min Scan# 3178
 Delta R.T. 0.000 min
 Lab File: VV029967.D
 Acq: 26 Jan 2023 19:59



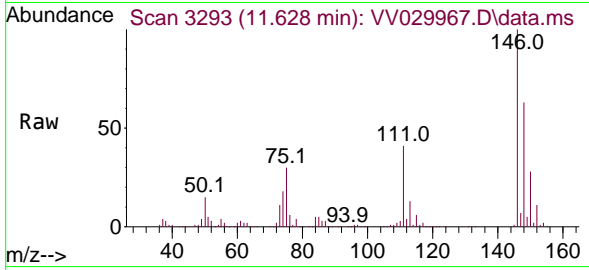
Tgt Ion:146 Resp: 246426
 Ion Ratio Lower Upper
 146 100
 111 38.0 26.5 49.1
 148 63.5 45.8 85.2



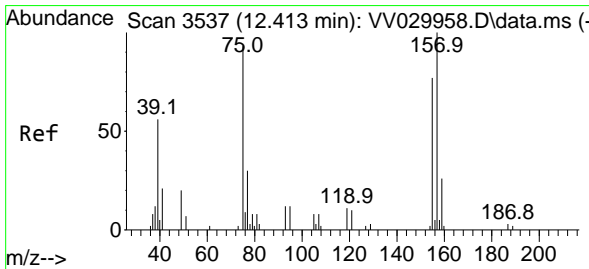
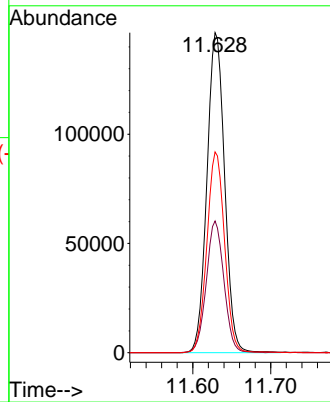
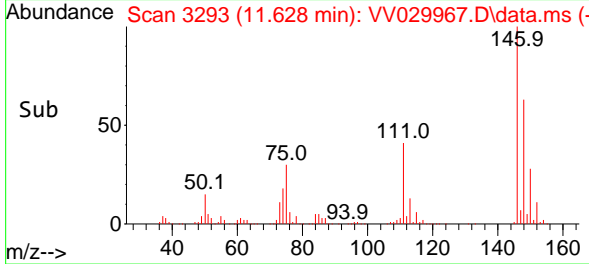


#67
 1,2-Dichlorobenzene
 Concen: 5.385 ug/L
 RT: 11.628 min Scan# 31
 Delta R.T. 0.000 min
 Lab File: VV029967.D
 Acq: 26 Jan 2023 19:59

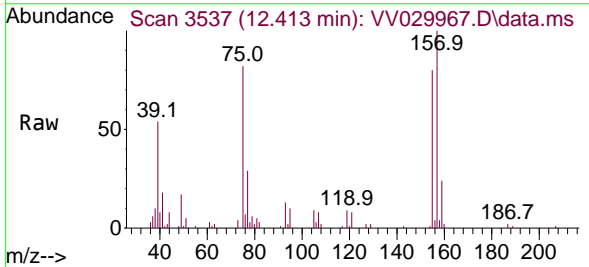
Instrument :
 MSVOA_V
 ClientSampleId :
 VSTD005395



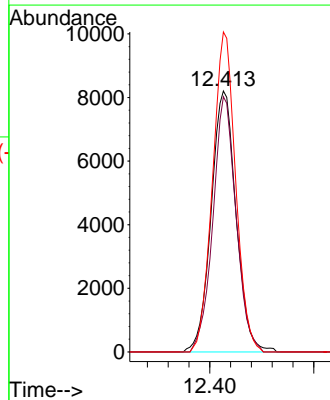
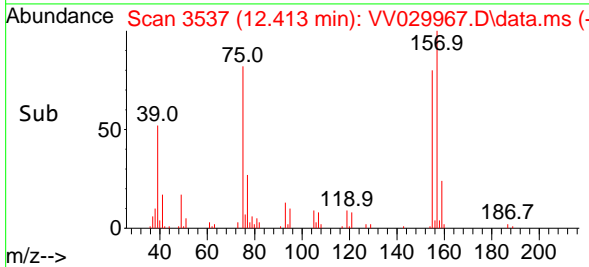
Tgt Ion:146 Resp: 230915
 Ion Ratio Lower Upper
 146 100
 111 41.1 31.8 47.8
 148 62.7 51.4 77.0

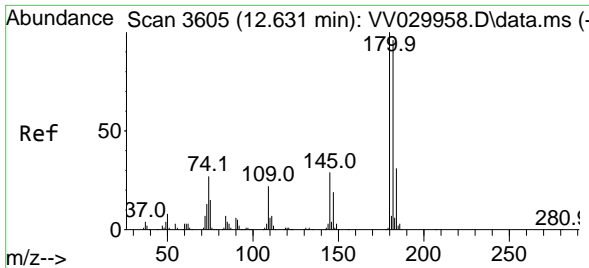


#68
 1,2-Dibromo-3-chloropropane
 Concen: 5.302 ug/L
 RT: 12.413 min Scan# 3537
 Delta R.T. 0.000 min
 Lab File: VV029967.D
 Acq: 26 Jan 2023 19:59



Tgt Ion: 75 Resp: 13643
 Ion Ratio Lower Upper
 75 100
 155 97.8 75.5 113.3
 157 122.6 99.2 148.8





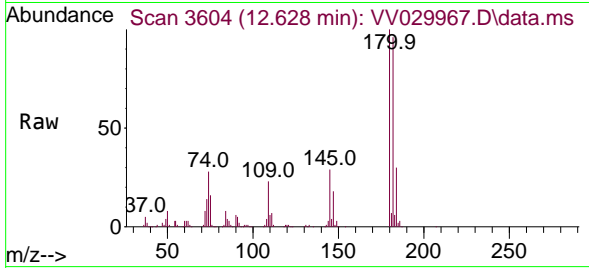
#69
 1,3,5-Trichlorobenzene
 Concen: 4.981 ug/L
 RT: 12.628 min Scan# 30
 Delta R.T. -0.003 min
 Lab File: VV029967.D
 Acq: 26 Jan 2023 19:59

Instrument :

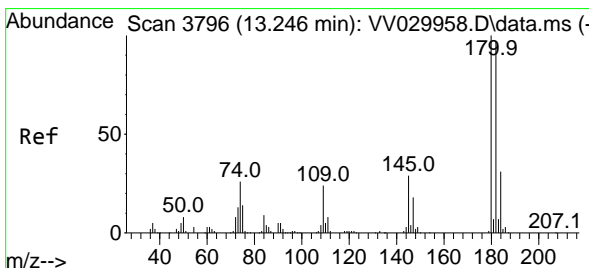
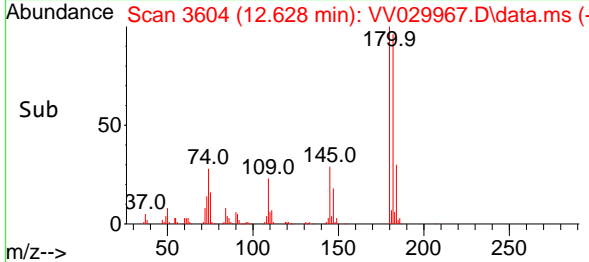
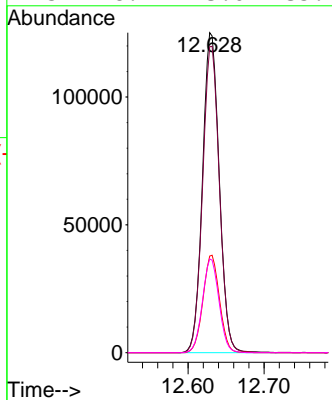
MSVOA_V

ClientSampleId :

VSTD005395

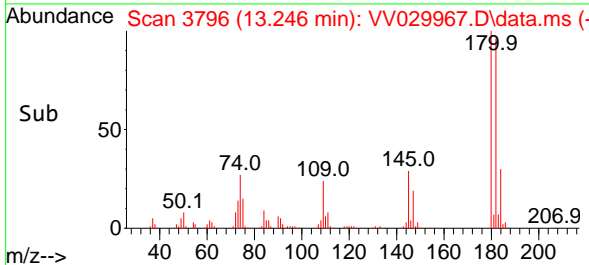
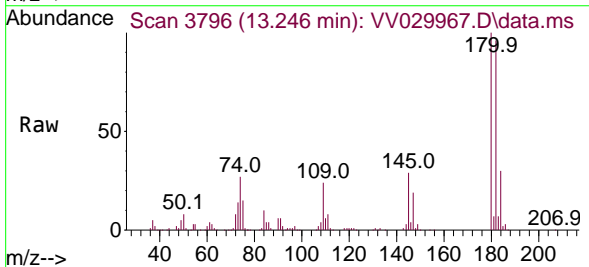
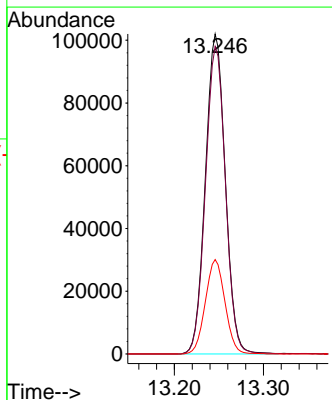


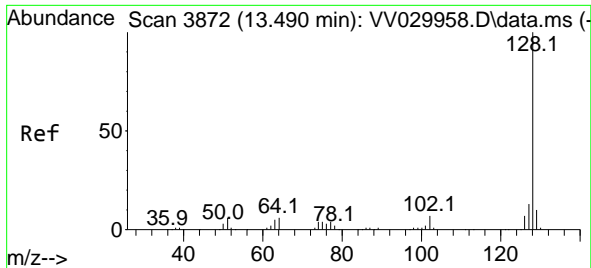
Tgt Ion:180 Resp: 191260
 Ion Ratio Lower Upper
 180 100
 182 96.1 75.4 113.2
 184 30.1 23.9 35.9
 145 28.9 23.6 35.4



#70
 1,2,4-trichlorobenzene
 Concen: 5.285 ug/L
 RT: 13.246 min Scan# 3796
 Delta R.T. 0.000 min
 Lab File: VV029967.D
 Acq: 26 Jan 2023 19:59

Tgt Ion:180 Resp: 158555
 Ion Ratio Lower Upper
 180 100
 182 96.1 75.8 113.8
 145 29.0 23.7 35.5



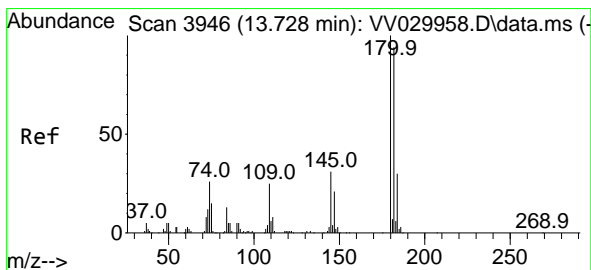
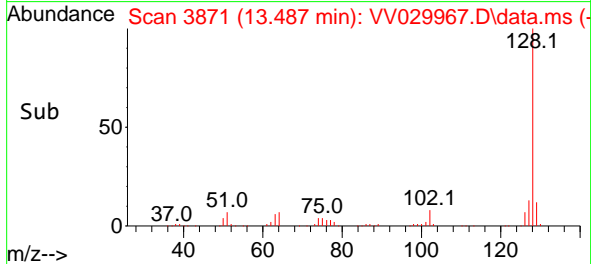
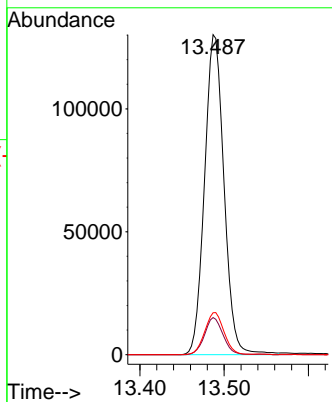
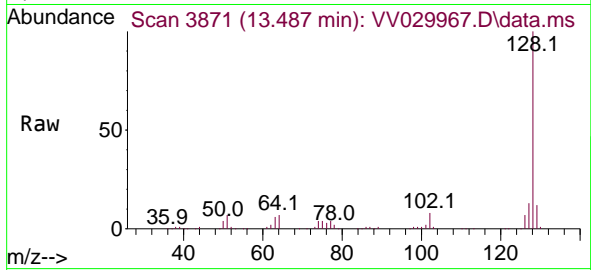


#71
 Naphthalene
 Concen: 5.385 ug/L
 RT: 13.487 min Scan# 3871
 Delta R.T. -0.003 min
 Lab File: VV029967.D
 Acq: 26 Jan 2023 19:59

Instrument : MSVOA_V
 ClientSampleId : VSTD005395

Tgt Ion:128 Resp: 209314

Ion	Ratio	Lower	Upper
128	100		
129	11.0	8.6	12.8
127	13.0	10.0	15.0



#72
 1,2,3-Trichlorobenzene
 Concen: 5.417 ug/L
 RT: 13.728 min Scan# 3946
 Delta R.T. 0.000 min
 Lab File: VV029967.D
 Acq: 26 Jan 2023 19:59

Tgt Ion:180 Resp: 134905

Ion	Ratio	Lower	Upper
180	100		
182	94.9	75.5	113.3
145	30.5	25.0	37.6

