

Data Path : Z:\voasrv\HPCHEM1\MSVOA_V\Data\VW012623\
 Data File : VW029962.D
 Acq On : 26 Jan 2023 14:31
 Operator : SY/MD
 Sample : 01295-07 10X
 Misc : 25.0mL/MSVOA_V/WATER
 ALS Vial : 10 Sample Multiplier: 1

Instrument :
 MSVOA_V
 ClientSampleId :
 COLDO

Integration Parameters: rteint.p

Integrator: RTE
 Smoothing : ON Filtering: 5
 Sampling : 1 Min Area: 3 % of largest Peak
 Start Thrs: 0.1 Max Peaks: 100
 Stop Thrs : 0 Peak Location: TOP

If leading or trailing edge < 100 prefer < Baseline drop else tangent >
 Peak separation: 5

Method : Z:\voasrv\HPCHEM1\MSVOA_V\Method\SFAMVTR011223WMA.M
 Title : TRACE VOA SFAM1.0

Signal : TIC: VW029962.D\data.ms

peak #	R.T. min	first scan	max scan	last scan	PK TY	peak height	corr. area	corr. % max.	% of total
1	1.294	74	79	104	rVB	191837	259379	31.51%	2.206%
2	1.555	154	160	172	rVB	130516	152352	18.51%	1.296%
3	2.098	314	329	354	rBV2	276400	475066	57.71%	4.041%
4	2.282	378	386	394	rBV	21611	34577	4.20%	0.294%
5	3.725	827	835	848	rVB3	9402	22841	2.77%	0.194%
6	3.896	876	888	902	rBV2	97377	225568	27.40%	1.918%
7	3.992	907	918	920	rBV	23572	41796	5.08%	0.355%
8	4.336	1011	1025	1041	rBV	139177	331655	40.29%	2.821%
9	5.027	1226	1240	1268	rVB2	363042	823195	100.00%	7.001%
10	5.606	1405	1420	1442	rBV	283788	563875	68.50%	4.796%
11	5.899	1496	1511	1528	rBV	206913	397388	48.27%	3.380%
12	6.063	1547	1562	1577	rBV	178753	357449	43.42%	3.040%
13	6.297	1626	1635	1646	rBV2	12305	23641	2.87%	0.201%
14	6.979	1835	1847	1861	rBV	81083	145110	17.63%	1.234%
15	7.079	1870	1878	1913	rBV3	34743	153463	18.64%	1.305%
16	7.304	1936	1948	1965	rBV	355550	610511	74.16%	5.193%
17	7.616	2035	2045	2061	rBV	47468	79991	9.72%	0.680%
18	7.963	2139	2153	2177	rVB	426116	716770	87.07%	6.096%
19	8.104	2184	2197	2224	rBV	321684	650068	78.97%	5.529%
20	8.239	2231	2239	2262	rVB2	34961	67433	8.19%	0.574%
21	8.432	2290	2299	2316	rBV3	16284	29941	3.64%	0.255%
22	8.661	2360	2370	2402	rBV4	14455	56454	6.86%	0.480%
23	8.841	2414	2426	2449	rBV	387361	624530	75.87%	5.312%
24	9.127	2506	2515	2524	rBV4	5481	8626	1.05%	0.073%
25	9.719	2687	2699	2711	rBV3	10076	23342	2.84%	0.199%
26	9.799	2713	2724	2737	rBV2	50561	84299	10.24%	0.717%
27	10.014	2779	2791	2801	rBV9	7722	19023	2.31%	0.162%
28	10.207	2839	2851	2864	rVB	126975	200187	24.32%	1.703%
29	10.818	3029	3041	3047	rBV	4516	9461	1.15%	0.080%
30	10.905	3061	3068	3075	rBV4	4820	8732	1.06%	0.074%
31	11.027	3095	3106	3115	rBV4	20642	40042	4.86%	0.341%
32	11.075	3116	3121	3130	rVB7	7439	11088	1.35%	0.094%
33	11.140	3130	3141	3158	rBV2	79844	126549	15.37%	1.076%
34	11.236	3159	3171	3185	rBV	429016	653756	79.42%	5.560%
35	11.455	3230	3239	3247	rVB3	5343	9761	1.19%	0.083%
36	11.526	3253	3261	3268	rBV7	5865	9975	1.21%	0.085%

Data Path : Z:\voasrv\HPCHEM1\MSVOA_V\Data\VW012623\
 Data File : VW029962.D
 Acq On : 26 Jan 2023 14:31
 Operator : SY/MD
 Sample : 01295-07 10X
 Misc : 25.0mL/MSVOA_V/WATER
 ALS Vial : 10 Sample Multiplier: 1

Instrument :
 MSVOA_V
 ClientSampleId :
 COLD0

Integration Parameters: rteint.p

Integrator: RTE
 Smoothing : ON Filtering: 5
 Sampling : 1 Min Area: 3 % of largest Peak
 Start Thrs: 0.1 Max Peaks: 100
 Stop Thrs : 0 Peak Location: TOP

If leading or trailing edge < 100 prefer < Baseline drop else tangent >
 Peak separation: 5

Method : Z:\voasrv\HPCHEM1\MSVOA_V\Method\SFAMVTR011223WMA.M
 Title : TRACE VOA SFAM1.0

37	11.612	3276	3288	3310	rVB	338147	534140	64.89%	4.543%
38	11.789	3331	3343	3371	rBV	257179	701838	85.26%	5.969%
39	11.979	3393	3402	3406	rBV5	17838	33511	4.07%	0.285%
40	12.220	3470	3477	3490	rBV3	16611	27477	3.34%	0.234%
41	12.329	3502	3511	3522	rVV2	75966	108253	13.15%	0.921%
42	12.394	3523	3531	3541	rVV8	7009	13959	1.70%	0.119%
43	12.452	3544	3549	3562	rVB5	11146	16264	1.98%	0.138%
44	12.580	3574	3589	3599	rBV5	6694	20117	2.44%	0.171%
45	12.776	3639	3650	3658	rBV9	6849	16800	2.04%	0.143%
46	12.834	3659	3668	3677	rBV2	69253	112495	13.67%	0.957%
47	12.943	3696	3702	3712	rVB3	17226	23780	2.89%	0.202%
48	13.050	3727	3735	3741	rBV2	28917	43519	5.29%	0.370%
49	13.088	3741	3747	3762	rVB7	21716	43896	5.33%	0.373%
50	13.214	3779	3786	3793	rBV2	16262	21710	2.64%	0.185%
51	13.307	3807	3815	3828	rVB	52543	76598	9.30%	0.651%
52	13.416	3843	3849	3861	rVB3	32114	47222	5.74%	0.402%
53	13.487	3864	3871	3886	rVB	13477	22358	2.72%	0.190%
54	13.638	3912	3918	3926	rBV	6606	10167	1.24%	0.086%
55	13.866	3979	3989	4010	rBV	74832	134805	16.38%	1.147%
56	14.066	4042	4051	4060	rBV5	31449	53609	6.51%	0.456%
57	14.226	4095	4101	4110	rVB2	17955	23896	2.90%	0.203%
58	14.313	4120	4128	4138	rVB	52535	78005	9.48%	0.663%
59	14.426	4157	4163	4173	rVB	13366	21446	2.61%	0.182%
60	14.609	4214	4220	4227	rBV8	9168	15173	1.84%	0.129%
61	14.799	4273	4279	4294	rVB4	43228	66275	8.05%	0.564%
62	14.889	4302	4307	4312	rBV6	8577	11667	1.42%	0.099%
63	15.255	4415	4421	4432	rVB2	29999	45217	5.49%	0.385%
64	15.365	4445	4455	4477	rVB	291269	426951	51.87%	3.631%
65	15.760	4569	4578	4594	rBV2	70570	115687	14.05%	0.984%
66	15.934	4622	4632	4658	rBV	239148	453617	55.10%	3.858%
67	16.281	4735	4740	4755	rVB2	15811	22667	2.75%	0.193%
68	16.541	4813	4821	4833	rBV8	28104	58363	7.09%	0.496%
69	16.718	4870	4876	4881	rBV5	13817	22729	2.76%	0.193%
70	17.078	4980	4988	5004	rVB3	93556	169019	20.53%	1.438%
71	17.165	5010	5015	5024	rVB	31203	45397	5.51%	0.386%
72	17.426	5091	5096	5114	rVB2	39154	71019	8.63%	0.604%

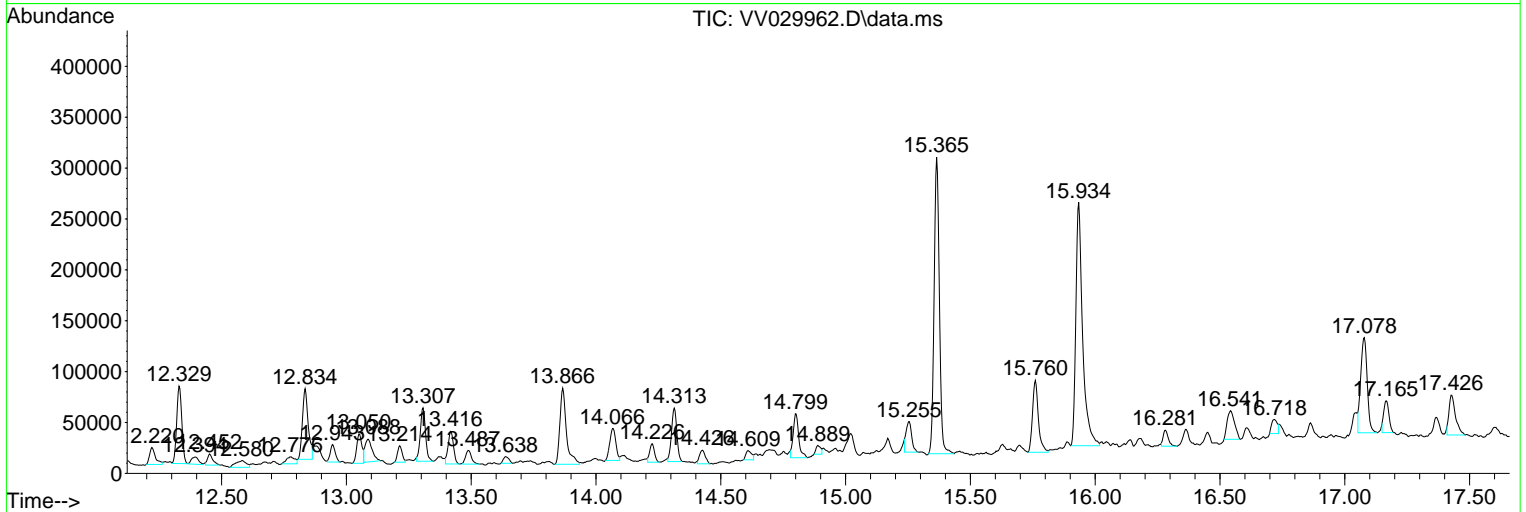
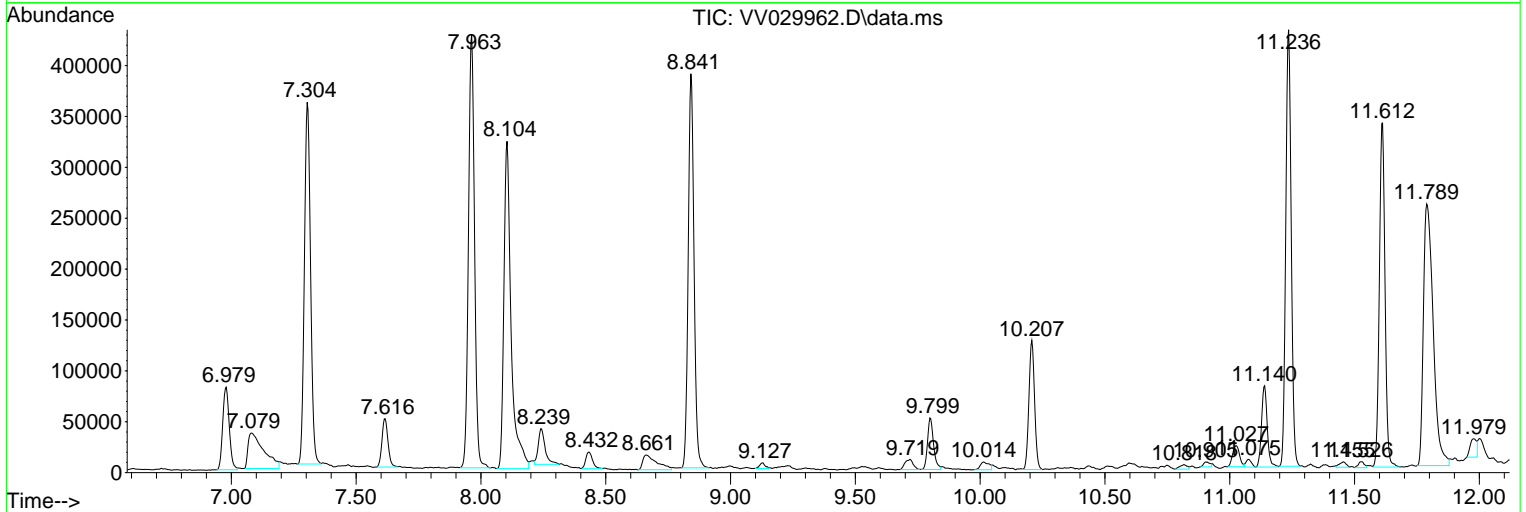
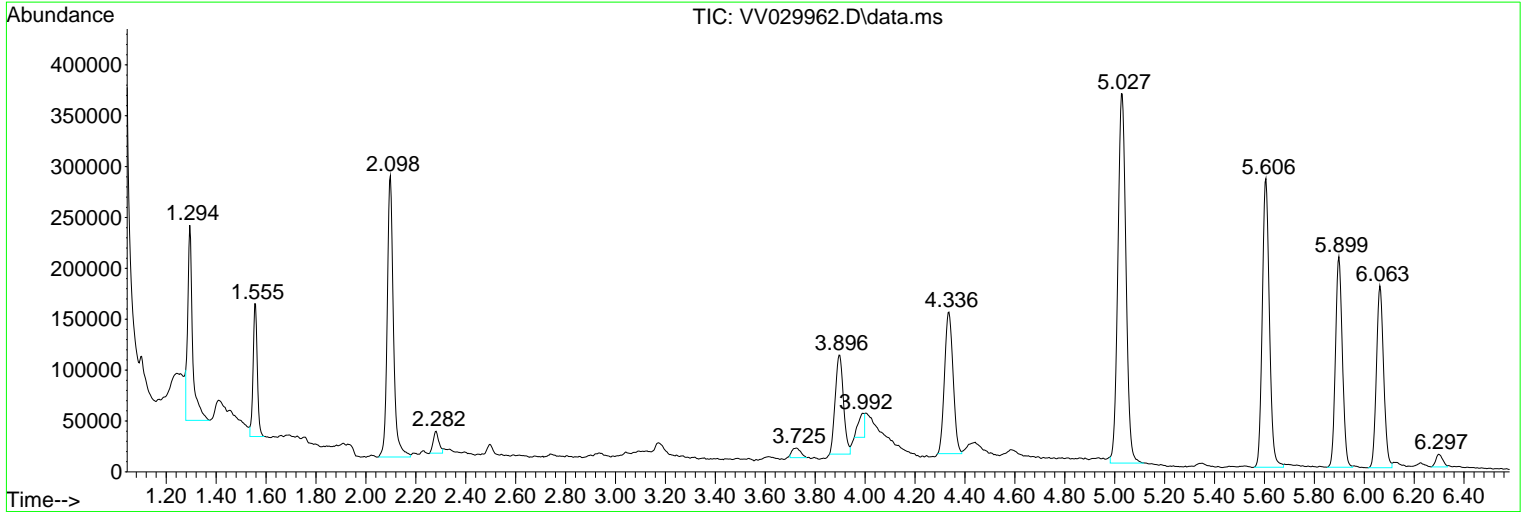
Sum of corrected areas: 11757540

Data Path : Z:\voasrv\HPCHEM1\MSVOA_V\Data\VV012623\
 Data File : VV029962.D
 Acq On : 26 Jan 2023 14:31
 Operator : SY/MD
 Sample : 01295-07 10X
 Misc : 25.0mL/MSVOA_V/WATER
 ALS Vial : 10 Sample Multiplier: 1

Instrument :
 MSVOA_V
ClientSampleId :
 COLD0

Quant Method : Z:\voasrv\HPCHEM1\MSVOA_V\Method\SFAMVTR011223WMA.M
 Quant Title : TRACE VOA SFAM1.0

TIC Library : C:\Database\NIST20.L
 TIC Integration Parameters: LSCINT.P



Data Path : Z:\voasrv\HPCHEM1\MSVOA_V\Data\VV012623\
 Data File : VV029962.D
 Acq On : 26 Jan 2023 14:31
 Operator : SY/MD
 Sample : 01295-07 10X
 Misc : 25.0mL/MSVOA_V/WATER
 ALS Vial : 10 Sample Multiplier: 1

Instrument :
 MSVOA_V
 ClientSampleId :
 COLD0

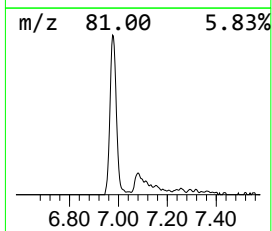
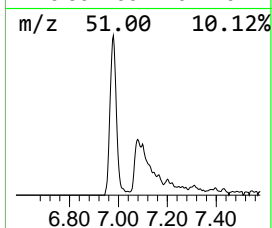
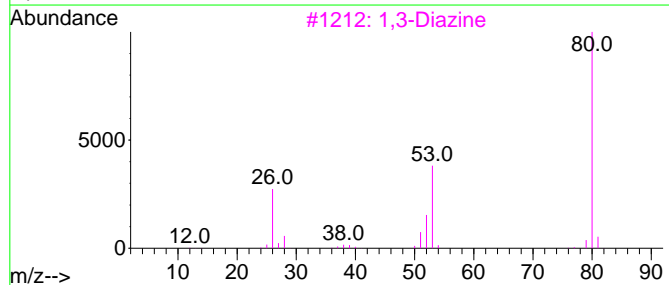
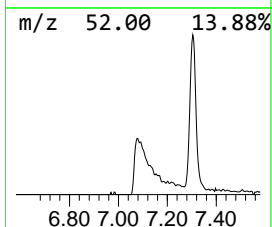
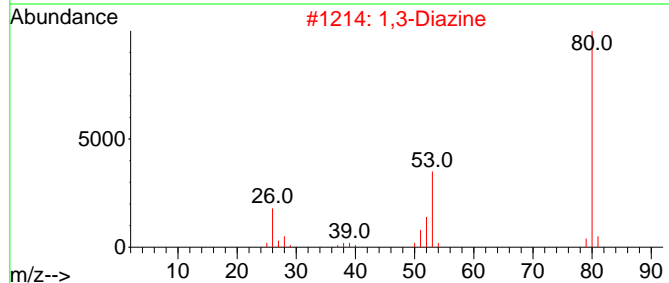
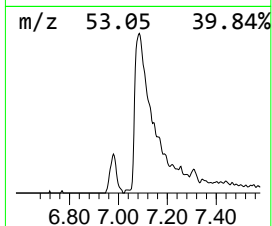
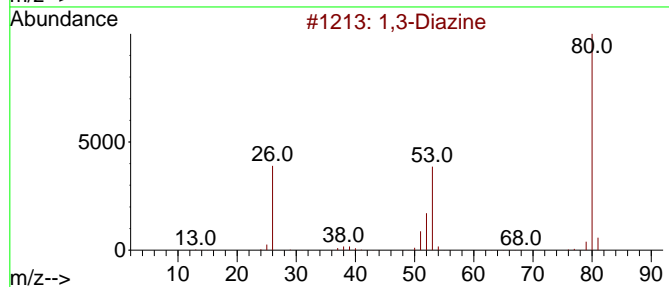
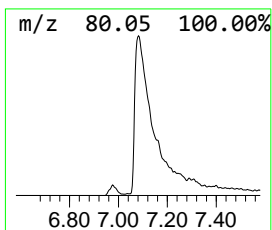
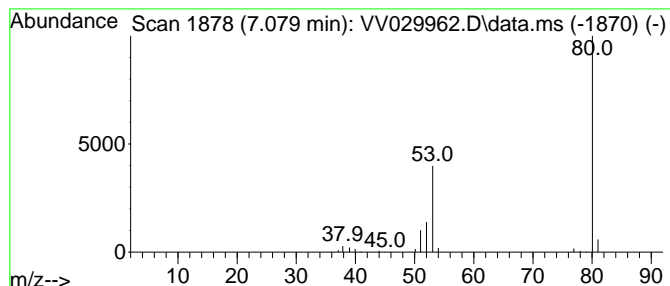
Quant Method : Z:\voasrv\HPCHEM1\MSVOA_V\Method\SFAMVTR011223WMA.M
 Quant Title : TRACE VOA SFAM1.0

TIC Library : C:\Database\NIST20.L
 TIC Integration Parameters: LSCINT.P

 Peak Number 2 1,3-Diazine Concentration Rank 4

R.T.	EstConc	Area	Relative to ISTD	R.T.
7.079	1.36 ug/L	153463	1,4-Difluorobenzene	5.606

Hit#	of 5	Tentative ID	MW	MolForm	CAS#	Qual
1		1,3-Diazine	80	C4H4N2	000289-95-2	91
2		1,3-Diazine	80	C4H4N2	000289-95-2	90
3		1,3-Diazine	80	C4H4N2	000289-95-2	90
4		Pyrazine	80	C4H4N2	000290-37-9	90
5		Pyrazine	80	C4H4N2	000290-37-9	90



Data Path : Z:\voasrv\HPCHEM1\MSVOA_V\Data\VV012623\
 Data File : VV029962.D
 Acq On : 26 Jan 2023 14:31
 Operator : SY/MD
 Sample : 01295-07 10X
 Misc : 25.0mL/MSVOA_V/WATER
 ALS Vial : 10 Sample Multiplier: 1

Instrument :
 MSVOA_V
 ClientSampleId :
 COLD0

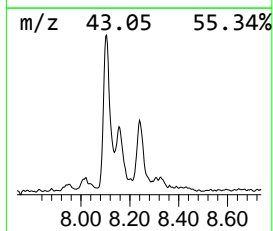
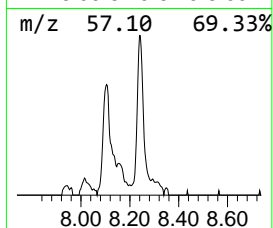
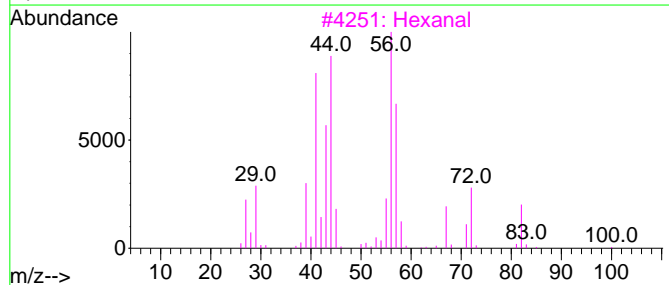
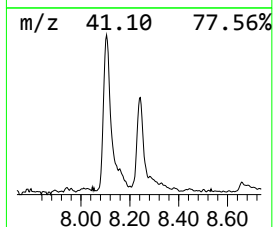
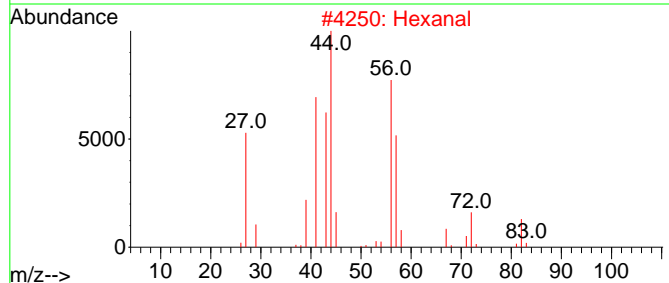
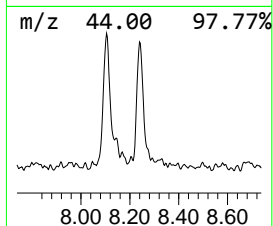
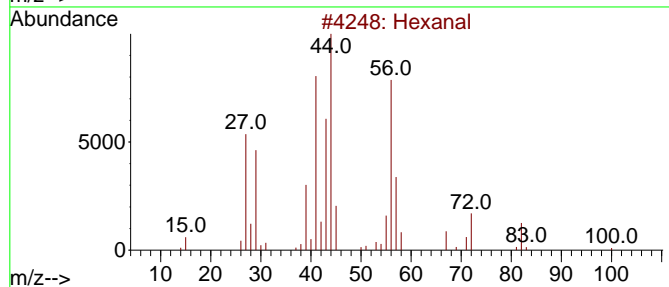
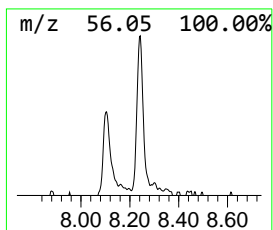
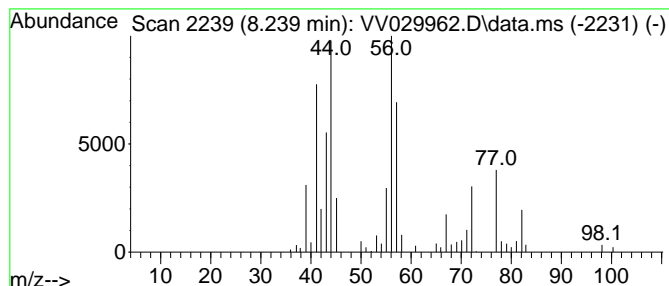
Quant Method : Z:\voasrv\HPCHEM1\MSVOA_V\Method\SFAMVTR011223WMA.M
 Quant Title : TRACE VOA SFAM1.0

TIC Library : C:\Database\NIST20.L
 TIC Integration Parameters: LSCINT.P

 Peak Number 3 Hexanal Concentration Rank 16

R.T.	EstConc	Area	Relative to ISTD	R.T.
8.239	0.54 ug/L	67433	Chlorobenzene-d5	8.841

Hit#	of	5	Tentative ID	MW	MolForm	CAS#	Qual
1	Hexanal			100	C6H12O	000066-25-1	64
2	Hexanal			100	C6H12O	000066-25-1	59
3	Hexanal			100	C6H12O	000066-25-1	56
4	Hexanal			100	C6H12O	000066-25-1	56
5	Hexanal			100	C6H12O	000066-25-1	52



Data Path : Z:\voasrv\HPCHEM1\MSVOA_V\Data\VV012623\
 Data File : VV029962.D
 Acq On : 26 Jan 2023 14:31
 Operator : SY/MD
 Sample : 01295-07 10X
 Misc : 25.0mL/MSVOA_V/WATER
 ALS Vial : 10 Sample Multiplier: 1

Instrument :
 MSVOA_V
 ClientSampleId :
 COLD0

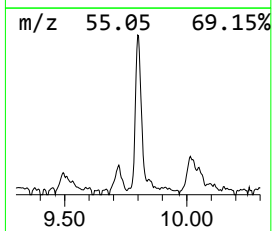
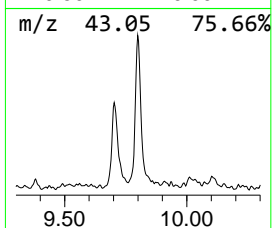
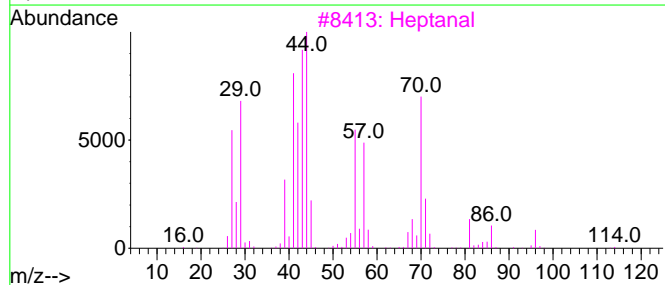
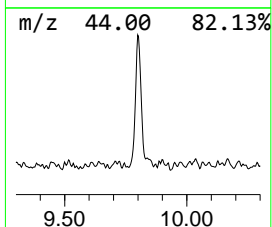
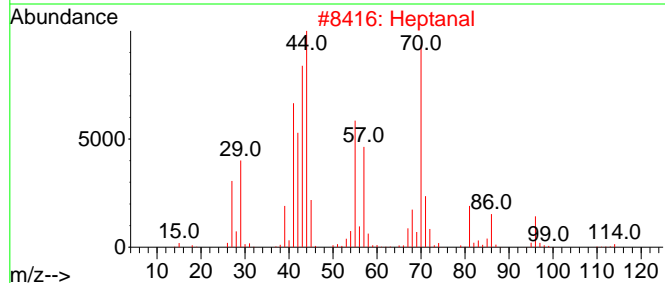
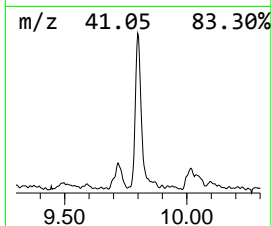
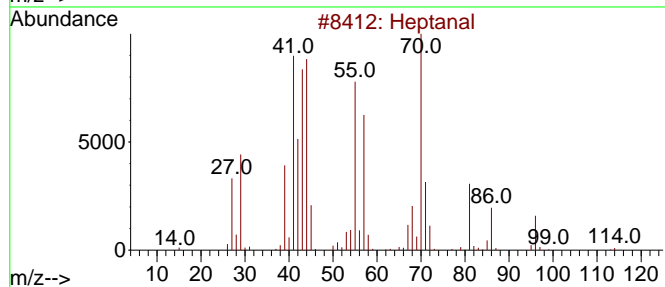
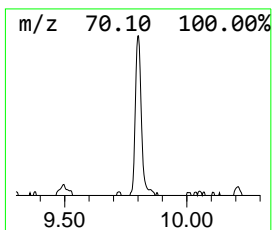
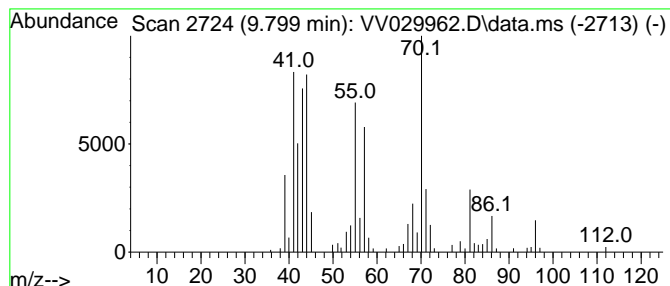
Quant Method : Z:\voasrv\HPCHEM1\MSVOA_V\Method\SFAMVTR011223WMA.M
 Quant Title : TRACE VOA SFAM1.0

TIC Library : C:\Database\NIST20.L
 TIC Integration Parameters: LSCINT.P

 Peak Number 4 Heptanal Concentration Rank 12

R.T.	EstConc	Area	Relative to ISTD	R.T.
9.799	0.67 ug/L	84299	Chlorobenzene-d5	8.841

Hit# of 5	Tentative ID	MW	MolForm	CAS#	Qual
1	Heptanal	114	C7H14O	000111-71-7	91
2	Heptanal	114	C7H14O	000111-71-7	90
3	Heptanal	114	C7H14O	000111-71-7	83
4	Heptanal	114	C7H14O	000111-71-7	83
5	Heptanal	114	C7H14O	000111-71-7	59



Data Path : Z:\voasrv\HPCHEM1\MSVOA_V\Data\VV012623\
 Data File : VV029962.D
 Acq On : 26 Jan 2023 14:31
 Operator : SY/MD
 Sample : 01295-07 10X
 Misc : 25.0mL/MSVOA_V/WATER
 ALS Vial : 10 Sample Multiplier: 1

Instrument :
 MSVOA_V
 ClientSampleId :
 COLD0

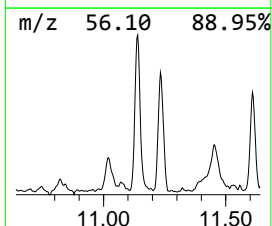
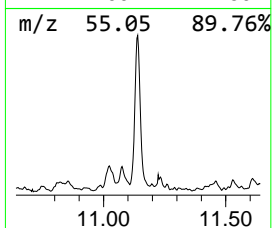
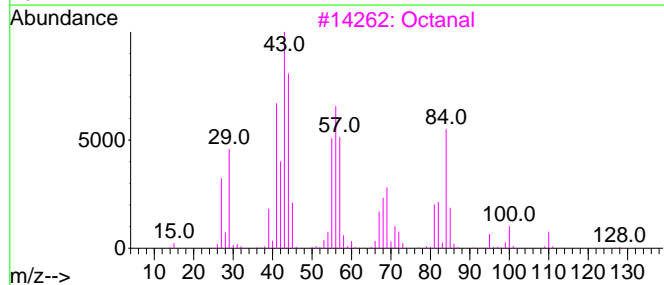
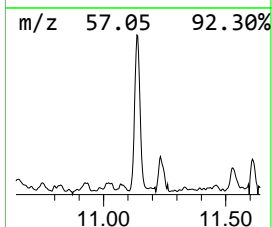
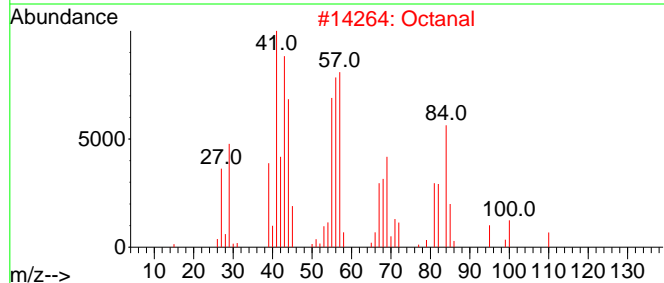
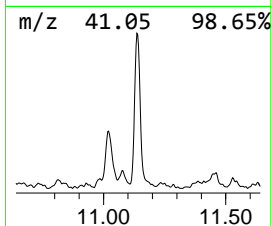
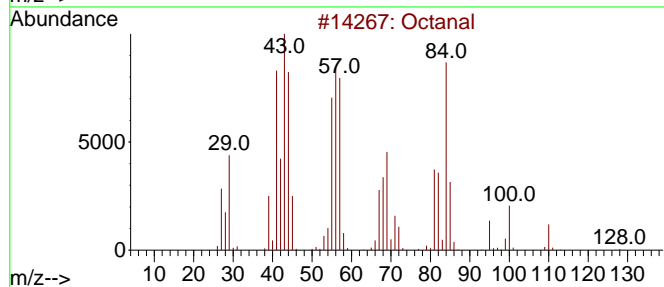
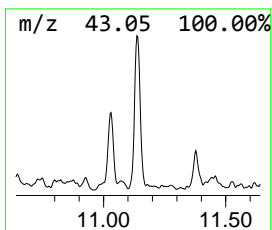
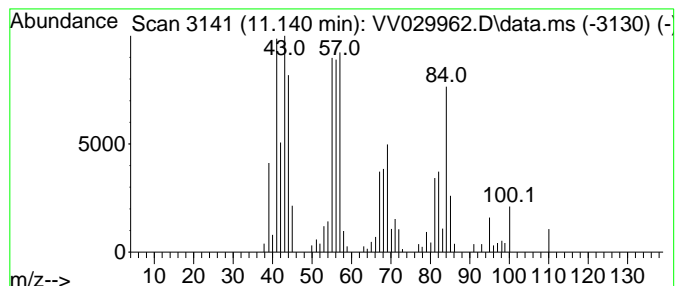
Quant Method : Z:\voasrv\HPCHEM1\MSVOA_V\Method\SFAMVTR011223WMA.M
 Quant Title : TRACE VOA SFAM1.0

TIC Library : C:\Database\NIST20.L
 TIC Integration Parameters: LSCINT.P

 Peak Number 5 Octanal Concentration Rank 8

R.T.	EstConc	Area	Relative to ISTD	R.T.
11.140	0.97 ug/L	126549	1,4-Dichlorobenzene-d4	11.236

Hit#	of	5	Tentative ID	MW	MolForm	CAS#	Qual
1	Octanal			128	C8H16O	000124-13-0	91
2	Octanal			128	C8H16O	000124-13-0	91
3	Octanal			128	C8H16O	000124-13-0	78
4	Cyclopentanol, 2-methyl-, trans-			100	C6H12O	025144-04-1	42
5	1-Hexene			84	C6H12	000592-41-6	38



Data Path : Z:\voasrv\HPCHEM1\MSVOA_V\Data\VV012623\
 Data File : VV029962.D
 Acq On : 26 Jan 2023 14:31
 Operator : SY/MD
 Sample : 01295-07 10X
 Misc : 25.0mL/MSVOA_V/WATER
 ALS Vial : 10 Sample Multiplier: 1

Instrument :
 MSVOA_V
 ClientSampleId :
 COLD0

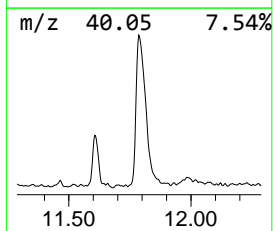
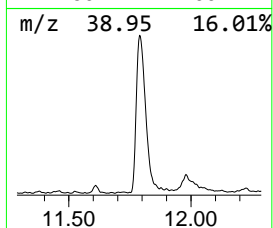
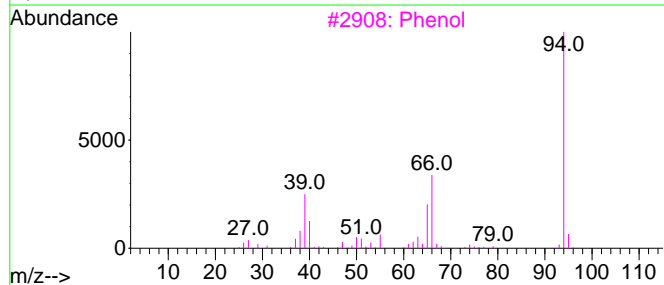
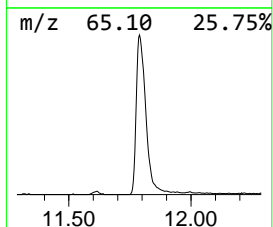
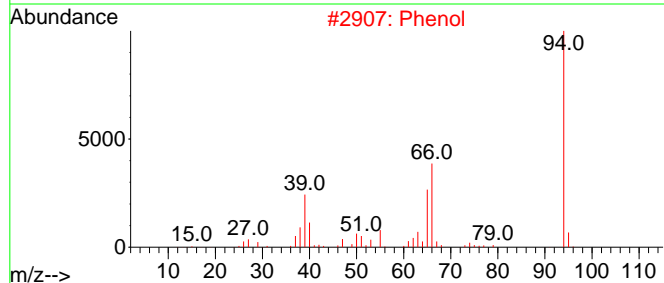
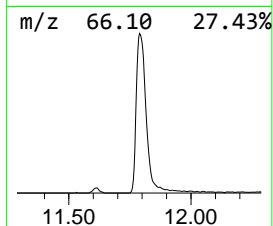
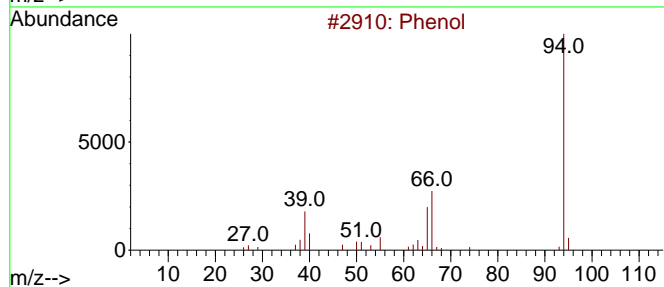
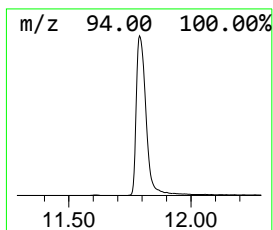
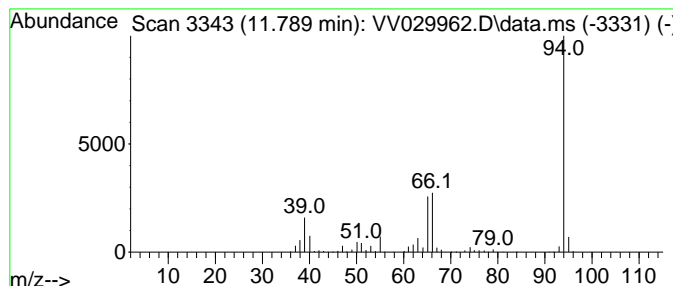
Quant Method : Z:\voasrv\HPCHEM1\MSVOA_V\Method\SFAMVTR011223WMA.M
 Quant Title : TRACE VOA SFAM1.0

TIC Library : C:\Database\NIST20.L
 TIC Integration Parameters: LSCINT.P

 Peak Number 6 Phenol Concentration Rank 1

R.T.	EstConc	Area	Relative to ISTD	R.T.
11.789	5.37 ug/L	701838	1,4-Dichlorobenzene-d4	11.236

Hit#	of	5	Tentative ID	MW	MolForm	CAS#	Qual
1	Phenol			94	C6H6O	000108-95-2	97
2	Phenol			94	C6H6O	000108-95-2	95
3	Phenol			94	C6H6O	000108-95-2	94
4	Phenol			94	C6H6O	000108-95-2	90
5	Phosphonic acid, (p-hydroxyphenyl)-			174	C6H7O4P	033795-18-5	90



Data Path : Z:\voasrv\HPCHEM1\MSVOA_V\Data\VV012623\
 Data File : VV029962.D
 Acq On : 26 Jan 2023 14:31
 Operator : SY/MD
 Sample : 01295-07 10X
 Misc : 25.0mL/MSVOA_V/WATER
 ALS Vial : 10 Sample Multiplier: 1

Instrument :
 MSVOA_V
 ClientSampleId :
 COLD0

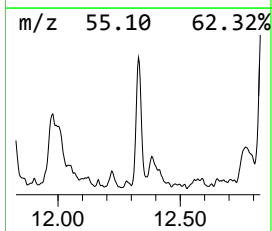
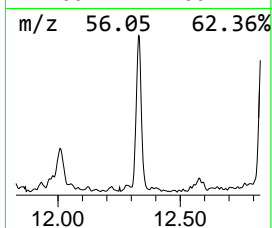
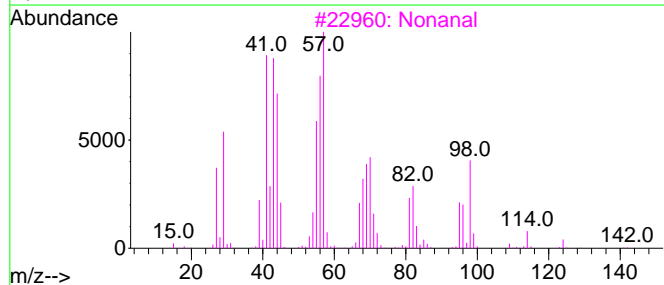
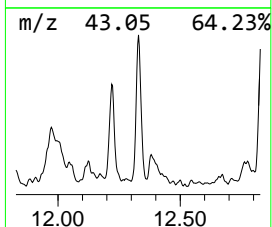
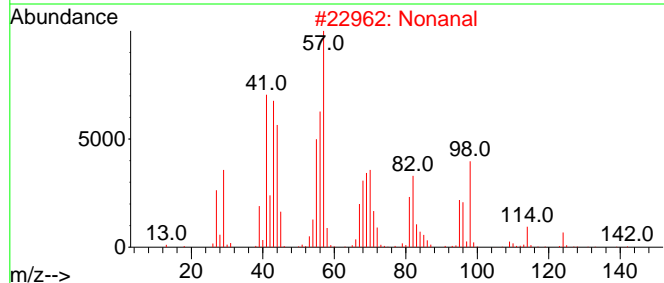
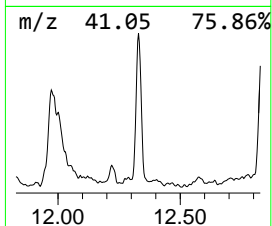
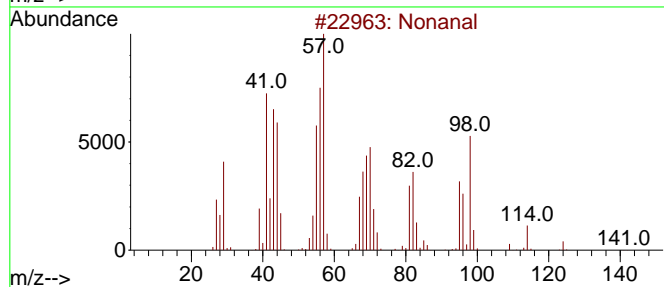
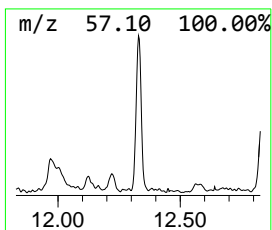
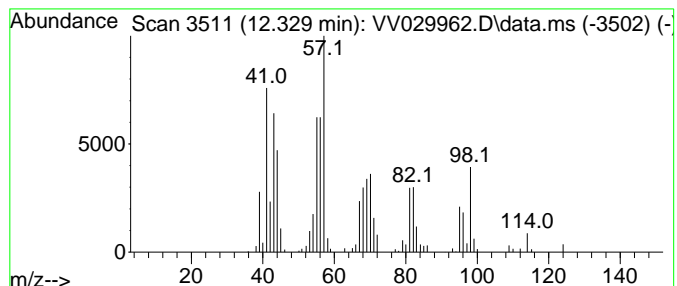
Quant Method : Z:\voasrv\HPCHEM1\MSVOA_V\Method\SFAMVTR011223WMA.M
 Quant Title : TRACE VOA SFAM1.0

TIC Library : C:\Database\NIST20.L
 TIC Integration Parameters: LSCINT.P

 Peak Number 7 Nonanal Concentration Rank 11

R.T.	EstConc	Area	Relative to ISTD	R.T.
12.329	0.83 ug/L	108253	1,4-Dichlorobenzene-d4	11.236

Hit#	of	5	Tentative ID	MW	MolForm	CAS#	Qual
1	Nonanal			142	C9H18O	000124-19-6	91
2	Nonanal			142	C9H18O	000124-19-6	91
3	Nonanal			142	C9H18O	000124-19-6	90
4	Nonanal			142	C9H18O	000124-19-6	87
5	2-Hexene, 5-methyl-, (E)-			98	C7H14	007385-82-2	30



Data Path : Z:\voasrv\HPCHEM1\MSVOA_V\Data\VV012623\
 Data File : VV029962.D
 Acq On : 26 Jan 2023 14:31
 Operator : SY/MD
 Sample : 01295-07 10X
 Misc : 25.0mL/MSVOA_V/WATER
 ALS Vial : 10 Sample Multiplier: 1

Instrument :
 MSVOA_V
 ClientSampleId :
 COLD0

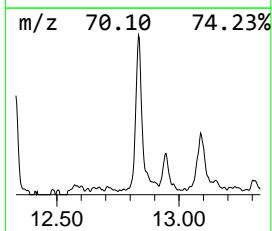
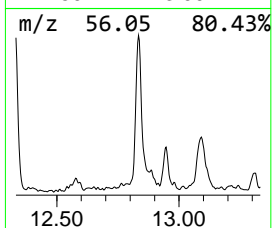
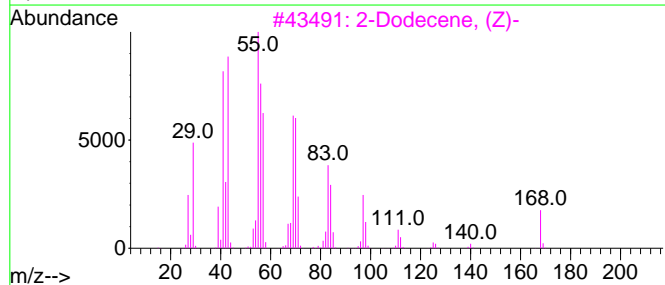
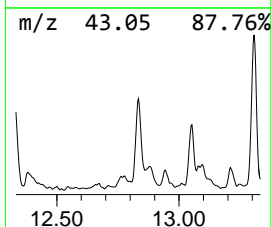
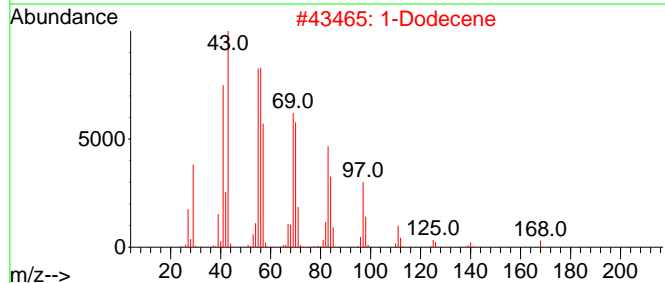
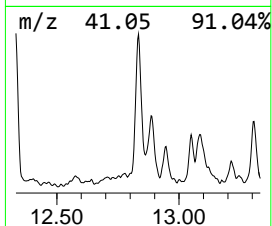
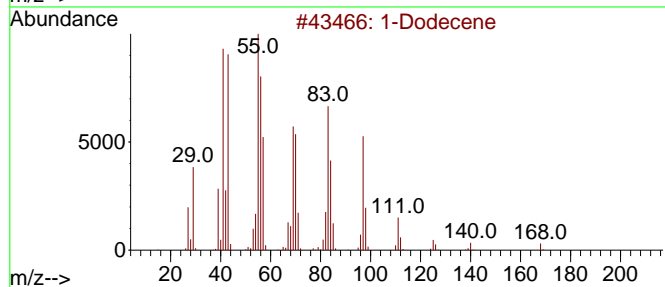
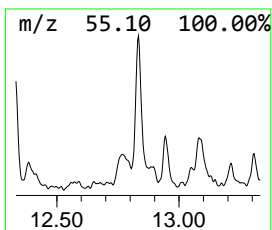
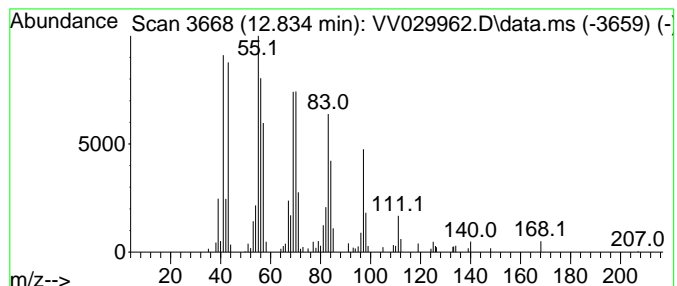
Quant Method : Z:\voasrv\HPCHEM1\MSVOA_V\Method\SFAMVTR011223WMA.M
 Quant Title : TRACE VOA SFAM1.0

TIC Library : C:\Database\NIST20.L
 TIC Integration Parameters: LSCINT.P

 Peak Number 8 (DEL) Alkane: Straight-Chai... Concentration Rank 10

R.T.	EstConc	Area	Relative to ISTD	R.T.
12.834	0.86 ug/L	112495	1,4-Dichlorobenzene-d4	11.236

Hit#	of 5	Tentative ID	MW	MolForm	CAS#	Qual
1		1-Dodecene	168	C12H24	000112-41-4	96
2		1-Dodecene	168	C12H24	000112-41-4	96
3		2-Dodecene, (Z)-	168	C12H24	007206-26-0	93
4		1-Tridecene	182	C13H26	002437-56-1	91
5		2-Dodecene, (E)-	168	C12H24	007206-13-5	91



Data Path : Z:\voasrv\HPCHEM1\MSVOA_V\Data\VV012623\
 Data File : VV029962.D
 Acq On : 26 Jan 2023 14:31
 Operator : SY/MD
 Sample : 01295-07 10X
 Misc : 25.0mL/MSVOA_V/WATER
 ALS Vial : 10 Sample Multiplier: 1

Instrument :
 MSVOA_V
 ClientSampleId :
 COLD0

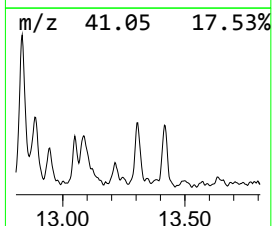
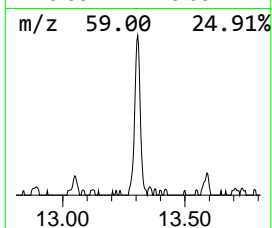
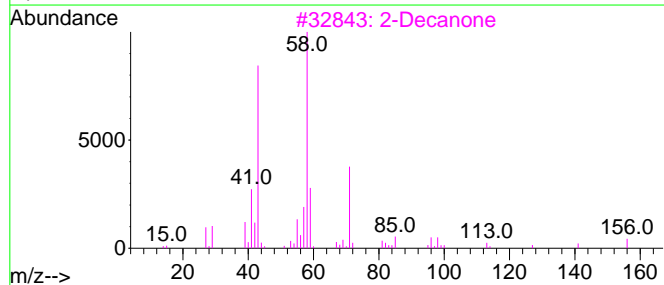
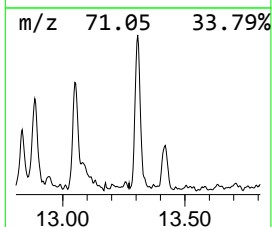
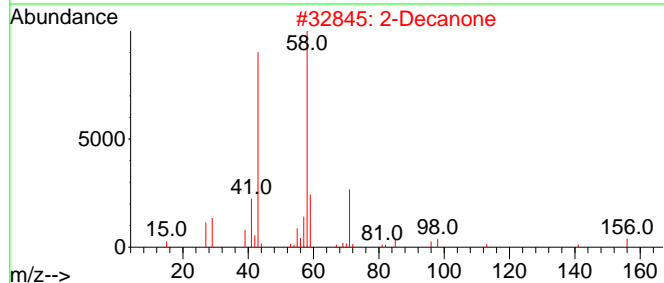
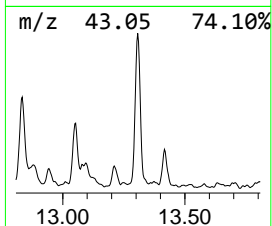
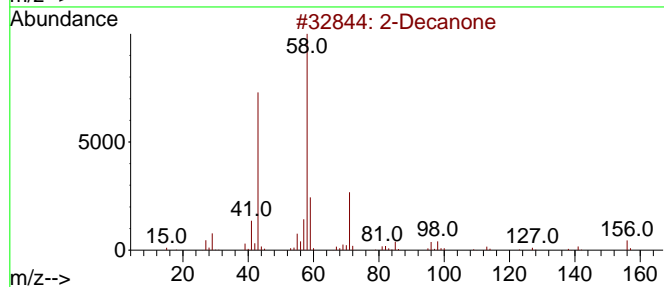
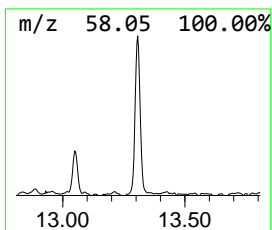
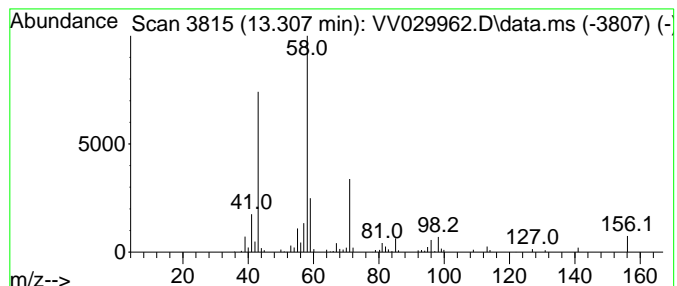
Quant Method : Z:\voasrv\HPCHEM1\MSVOA_V\Method\SFAMVTR011223WMA.M
 Quant Title : TRACE VOA SFAM1.0

TIC Library : C:\Database\NIST20.L
 TIC Integration Parameters: LSCINT.P

 Peak Number 9 2-Decanone Concentration Rank 14

R.T.	EstConc	Area	Relative to ISTD	R.T.
13.307	0.59 ug/L	76598	1,4-Dichlorobenzene-d4	11.236

Hit#	of	5	Tentative ID	MW	MolForm	CAS#	Qual
1			2-Decanone	156	C10H20O	000693-54-9	97
2			2-Decanone	156	C10H20O	000693-54-9	91
3			2-Decanone	156	C10H20O	000693-54-9	91
4			2-Decanone	156	C10H20O	000693-54-9	81
5			2-Dodecanone	184	C12H24O	006175-49-1	78



Data Path : Z:\voasrv\HPCHEM1\MSVOA_V\Data\VV012623\
 Data File : VV029962.D
 Acq On : 26 Jan 2023 14:31
 Operator : SY/MD
 Sample : 01295-07 10X
 Misc : 25.0mL/MSVOA_V/WATER
 ALS Vial : 10 Sample Multiplier: 1

Instrument :
 MSVOA_V
 ClientSampleId :
 COLD0

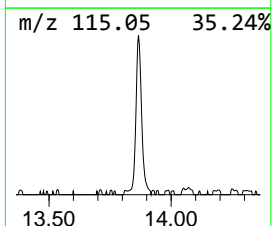
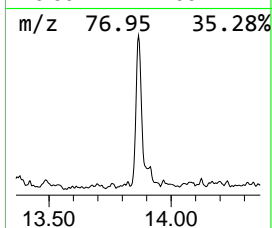
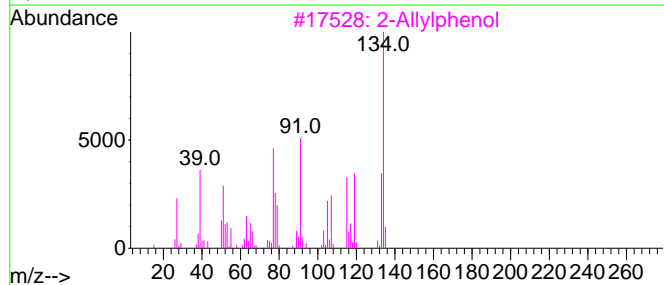
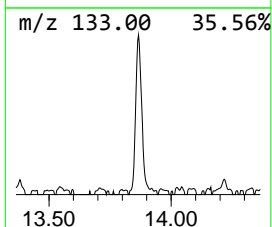
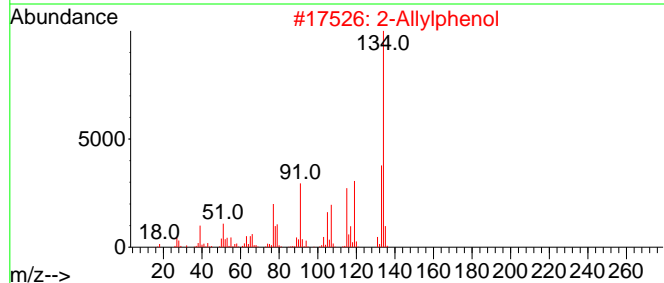
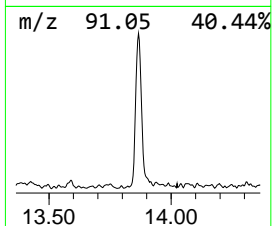
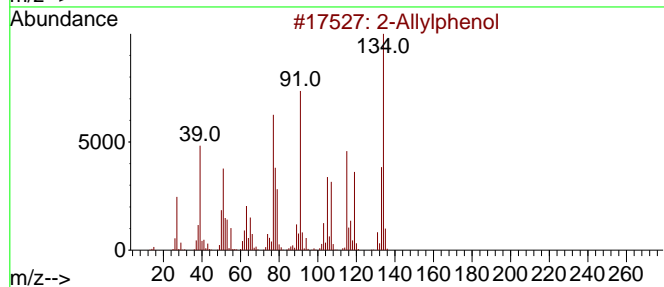
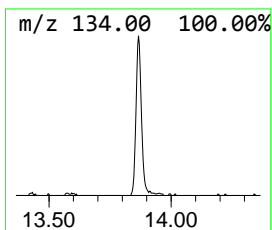
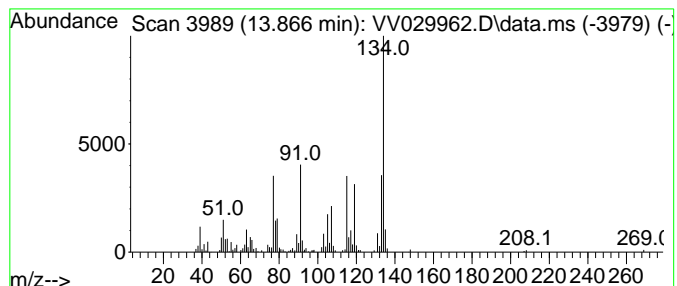
Quant Method : Z:\voasrv\HPCHEM1\MSVOA_V\Method\SFAMVTR011223WMA.M
 Quant Title : TRACE VOA SFAM1.0

TIC Library : C:\Database\NIST20.L
 TIC Integration Parameters: LSCINT.P

 Peak Number 10 2-Allylphenol Concentration Rank 7

R.T.	EstConc	Area	Relative to ISTD	R.T.
13.866	1.03 ug/L	134805	1,4-Dichlorobenzene-d4	11.236

Hit#	of	5	Tentative ID	MW	MolForm	CAS#	Qual
1			2-Allylphenol	134	C9H10O	001745-81-9	96
2			2-Allylphenol	134	C9H10O	001745-81-9	96
3			2-Allylphenol	134	C9H10O	001745-81-9	94
4			2H-1-Benzopyran, 3,4-dihydro-	134	C9H10O	000493-08-3	76
5			Benzofuran, 2,3-dihydro-2-methyl-	134	C9H10O	001746-11-8	70



Data Path : Z:\voasrv\HPCHEM1\MSVOA_V\Data\VV012623\
 Data File : VV029962.D
 Acq On : 26 Jan 2023 14:31
 Operator : SY/MD
 Sample : 01295-07 10X
 Misc : 25.0mL/MSVOA_V/WATER
 ALS Vial : 10 Sample Multiplier: 1

Instrument :
 MSVOA_V
 ClientSampleId :
 COLD0

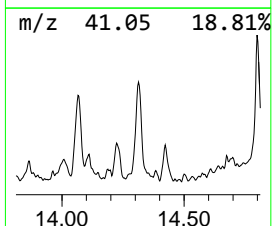
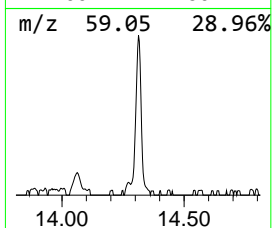
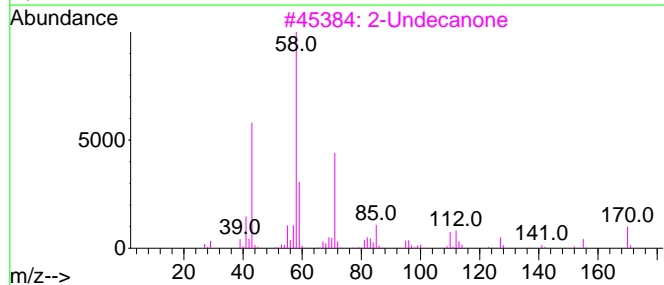
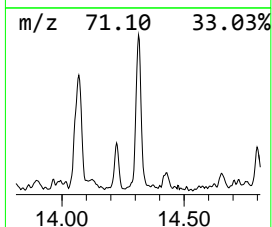
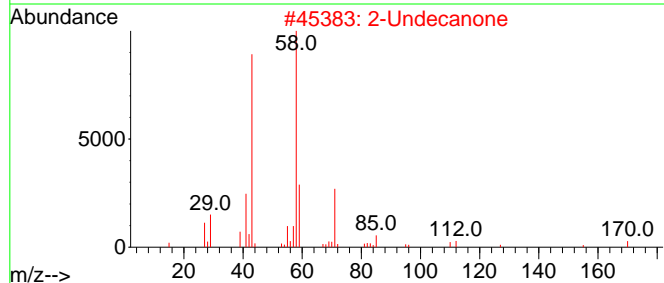
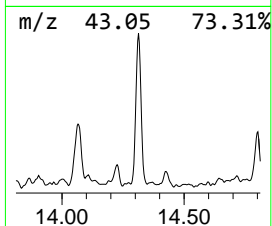
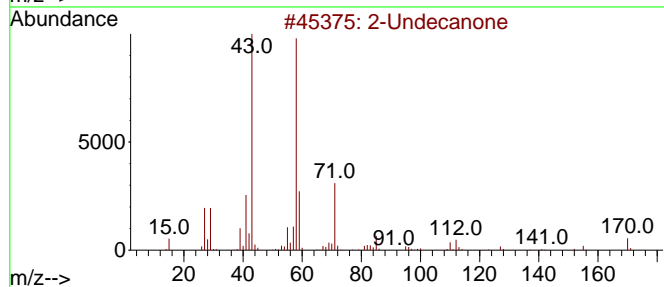
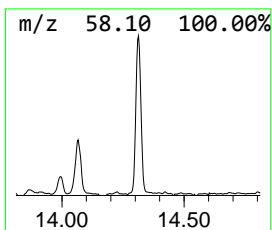
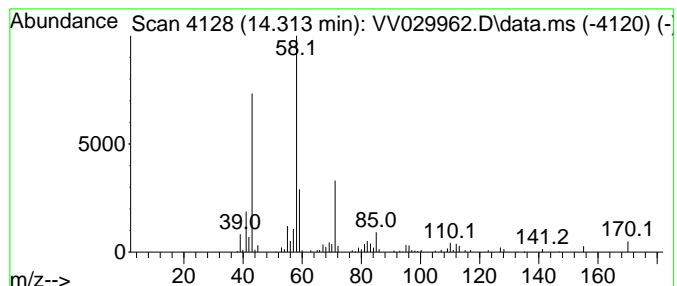
Quant Method : Z:\voasrv\HPCHEM1\MSVOA_V\Method\SFAMVTR011223WMA.M
 Quant Title : TRACE VOA SFAM1.0

TIC Library : C:\Database\NIST20.L
 TIC Integration Parameters: LSCINT.P

 Peak Number 11 2-Undecanone Concentration Rank 13

R.T.	EstConc	Area	Relative to ISTD	R.T.
14.313	0.60 ug/L	78005	1,4-Dichlorobenzene-d4	11.236

Hit#	of	5	Tentative ID	MW	MolForm	CAS#	Qual
1			2-Undecanone	170	C11H22O	000112-12-9	91
2			2-Undecanone	170	C11H22O	000112-12-9	87
3			2-Undecanone	170	C11H22O	000112-12-9	87
4			2-Dodecanone	184	C12H24O	006175-49-1	86
5			2-Undecanone	170	C11H22O	000112-12-9	81



Data Path : Z:\voasrv\HPCHEM1\MSVOA_V\Data\VV012623\
 Data File : VV029962.D
 Acq On : 26 Jan 2023 14:31
 Operator : SY/MD
 Sample : 01295-07 10X
 Misc : 25.0mL/MSVOA_V/WATER
 ALS Vial : 10 Sample Multiplier: 1

Instrument :
 MSVOA_V
 ClientSampleId :
 COLD0

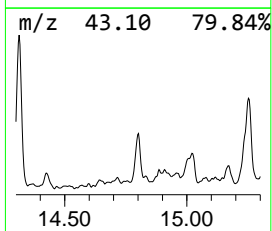
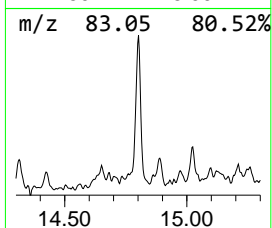
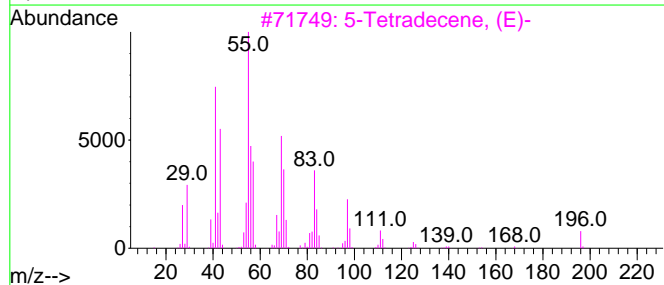
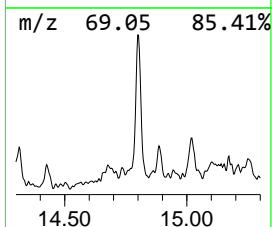
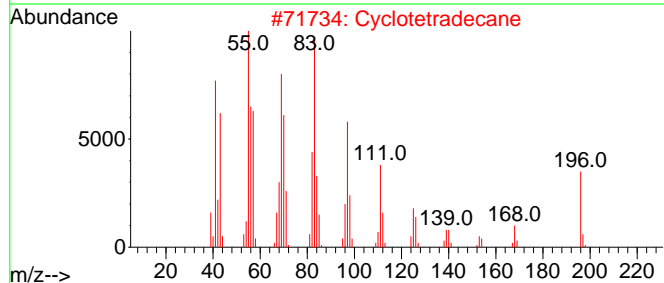
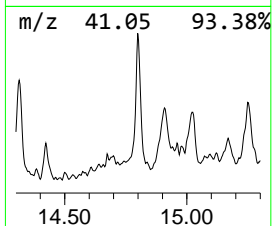
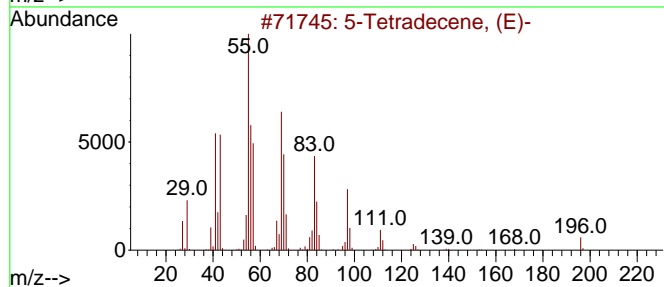
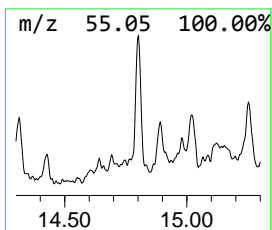
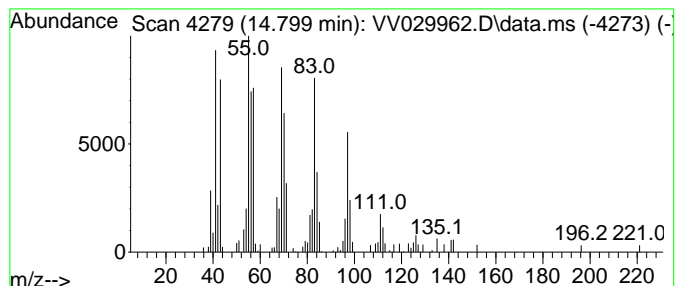
Quant Method : Z:\voasrv\HPCHEM1\MSVOA_V\Method\SFAMVTR011223WMA.M
 Quant Title : TRACE VOA SFAM1.0

TIC Library : C:\Database\NIST20.L
 TIC Integration Parameters: LSCINT.P

 Peak Number 12 (DEL) Alkane: Straight-Chai... Concentration Rank 17

R.T.	EstConc	Area	Relative to ISTD	R.T.
14.799	0.51 ug/L	66275	1,4-Dichlorobenzene-d4	11.236

Hit#	of 5	Tentative ID	MW	MolForm	CAS#	Qual
1		5-Tetradecene, (E)-	196	C14H28	041446-66-6	96
2		Cyclotetradecane	196	C14H28	000295-17-0	95
3		5-Tetradecene, (E)-	196	C14H28	041446-66-6	95
4		6-Tetradecene, (Z)-	196	C14H28	041446-61-1	94
5		1-Tetradecene	196	C14H28	001120-36-1	93



Data Path : Z:\voasrv\HPCHEM1\MSVOA_V\Data\VV012623\
 Data File : VV029962.D
 Acq On : 26 Jan 2023 14:31
 Operator : SY/MD
 Sample : 01295-07 10X
 Misc : 25.0mL/MSVOA_V/WATER
 ALS Vial : 10 Sample Multiplier: 1

Instrument :
 MSVOA_V
 ClientSampleId :
 COLD0

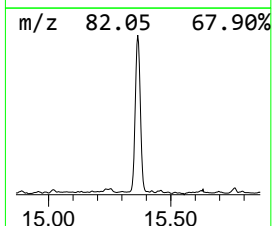
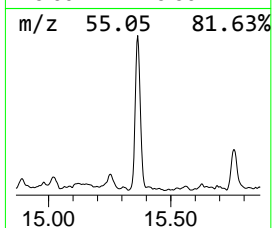
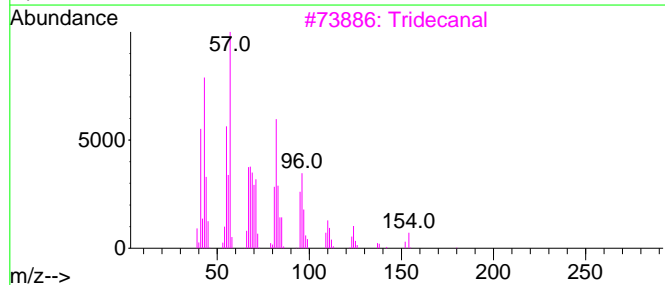
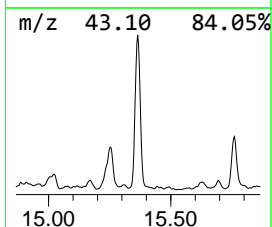
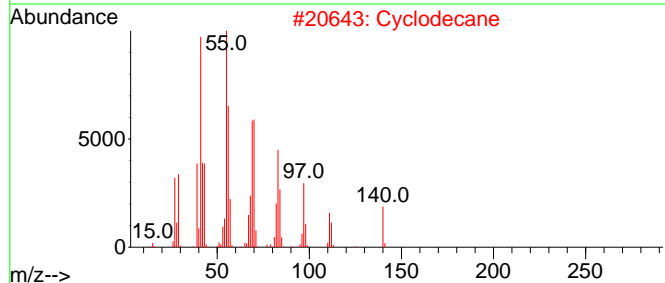
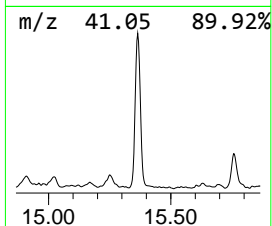
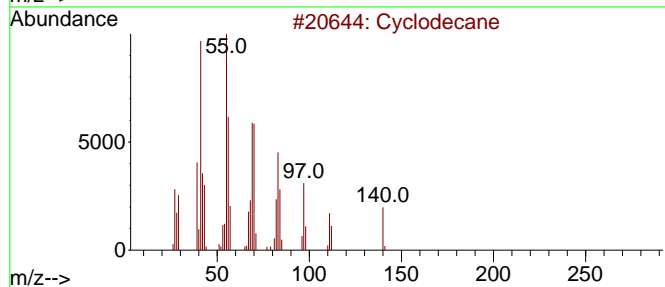
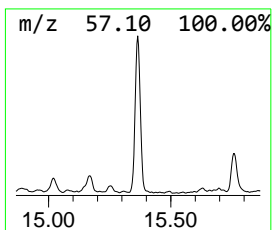
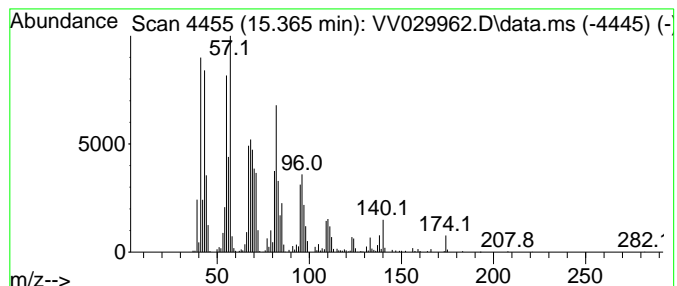
Quant Method : Z:\voasrv\HPCHEM1\MSVOA_V\Method\SFAMVTR011223WMA.M
 Quant Title : TRACE VOA SFAM1.0

TIC Library : C:\Database\NIST20.L
 TIC Integration Parameters: LSCINT.P

 Peak Number 13 (DEL) Alkane: Cyclic15.365 Concentration Rank 3

R.T.	EstConc	Area	Relative to ISTD	R.T.
15.365	3.27 ug/L	426951	1,4-Dichlorobenzene-d4	11.236

Hit#	of 5	Tentative ID	MW	MolForm	CAS#	Qual
1		Cyclodecane	140	C10H20	000293-96-9	94
2		Cyclodecane	140	C10H20	000293-96-9	94
3		Tridecanal	198	C13H26O	010486-19-8	90
4		Tridecanal	198	C13H26O	010486-19-8	90
5		Dodecanal	184	C12H24O	000112-54-9	90



Data Path : Z:\voasrv\HPCHEM1\MSVOA_V\Data\VV012623\
 Data File : VV029962.D
 Acq On : 26 Jan 2023 14:31
 Operator : SY/MD
 Sample : 01295-07 10X
 Misc : 25.0mL/MSVOA_V/WATER
 ALS Vial : 10 Sample Multiplier: 1

Instrument :
 MSVOA_V
 ClientSampleId :
 COLD0

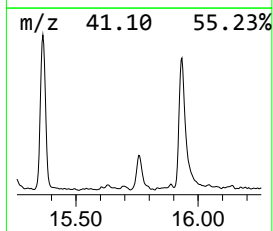
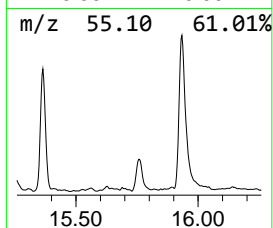
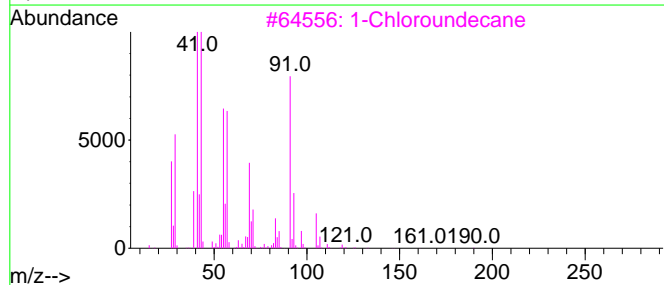
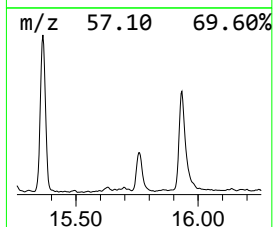
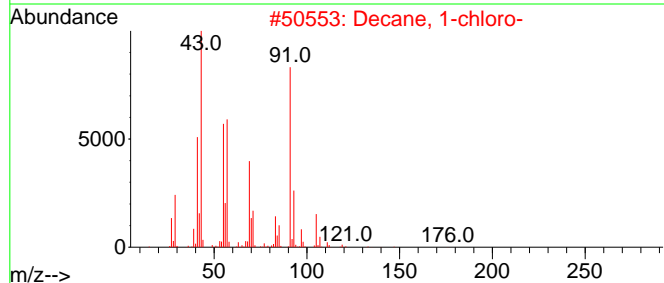
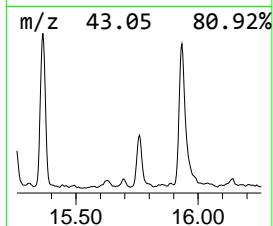
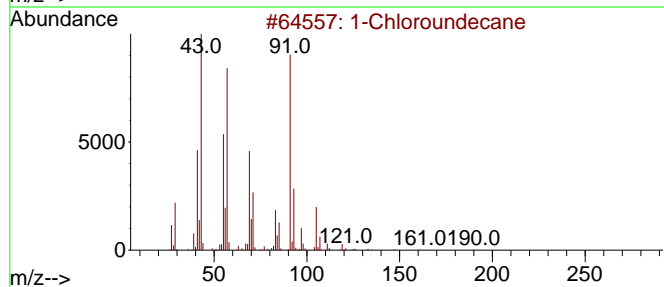
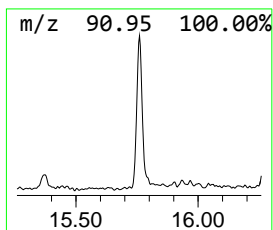
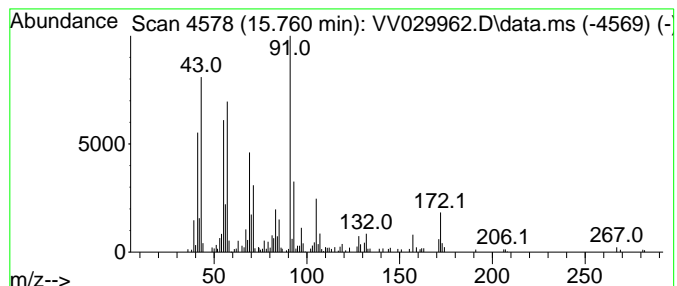
Quant Method : Z:\voasrv\HPCHEM1\MSVOA_V\Method\SFAMVTR011223WMA.M
 Quant Title : TRACE VOA SFAM1.0

TIC Library : C:\Database\NIST20.L
 TIC Integration Parameters: LSCINT.P

 Peak Number 14 1-Chloroundecane Concentration Rank 9

R.T.	EstConc	Area	Relative to ISTD	R.T.
15.760	0.88 ug/L	115687	1,4-Dichlorobenzene-d4	11.236

Hit#	of 5	Tentative ID	MW	MolForm	CAS#	Qual
1		1-Chloroundecane	190	C11H23Cl	002473-03-2	83
2		Decane, 1-chloro-	176	C10H21Cl	001002-69-3	83
3		1-Chloroundecane	190	C11H23Cl	002473-03-2	72
4		Dodecane, 1-chloro-	204	C12H25Cl	000112-52-7	64
5		Octane, 1-chloro-	148	C8H17Cl	000111-85-3	49



Data Path : Z:\voasrv\HPCHEM1\MSVOA_V\Data\VV012623\
 Data File : VV029962.D
 Acq On : 26 Jan 2023 14:31
 Operator : SY/MD
 Sample : 01295-07 10X
 Misc : 25.0mL/MSVOA_V/WATER
 ALS Vial : 10 Sample Multiplier: 1

Instrument :
 MSVOA_V
 ClientSampleId :
 COLD0

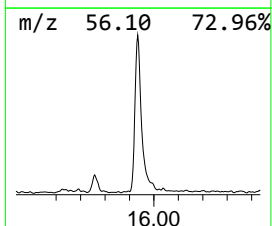
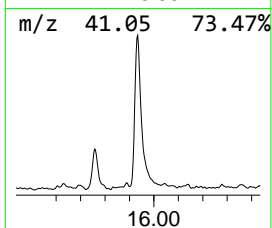
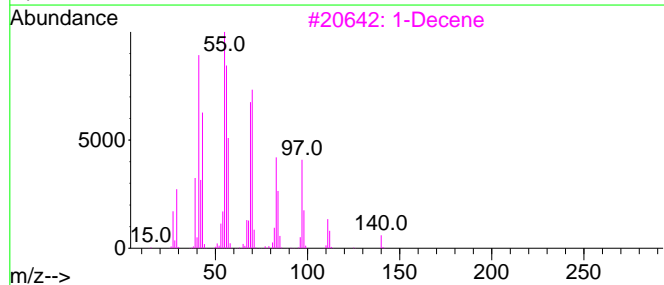
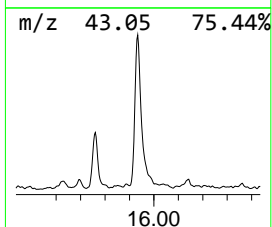
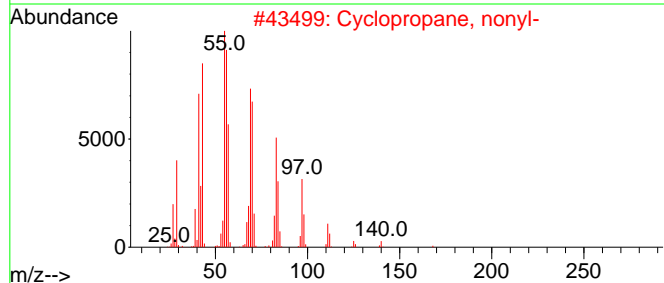
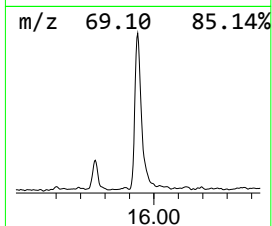
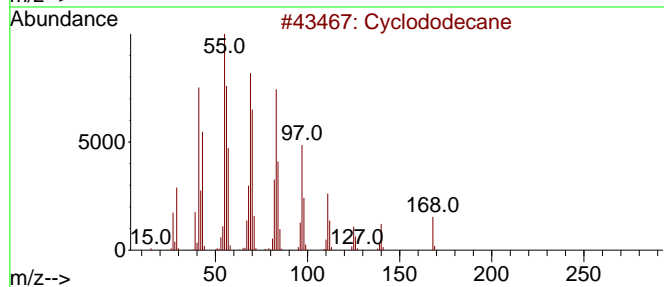
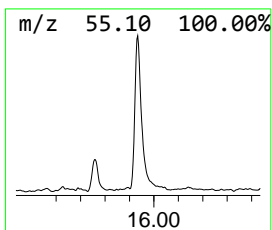
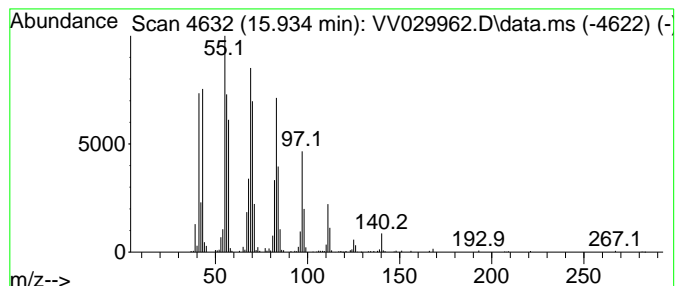
Quant Method : Z:\voasrv\HPCHEM1\MSVOA_V\Method\SFAMVTR011223WMA.M
 Quant Title : TRACE VOA SFAM1.0

TIC Library : C:\Database\NIST20.L
 TIC Integration Parameters: LSCINT.P

 Peak Number 15 (DEL) Alkane: Cyclic15.934 Concentration Rank 2

R.T.	EstConc	Area	Relative to ISTD	R.T.
15.934	3.47 ug/L	453617	1,4-Dichlorobenzene-d4	11.236

Hit#	of 5	Tentative ID	MW	MolForm	CAS#	Qual
1		Cyclododecane	168	C12H24	000294-62-2	97
2		Cyclopropane, nonyl-	168	C12H24	074663-85-7	96
3		1-Decene	140	C10H20	000872-05-9	95
4		Cyclooctane, 1,2-dimethyl-	140	C10H20	013151-94-5	95
5		1-Dodecanol	186	C12H26O	000112-53-8	94



Data Path : Z:\voasrv\HPCHEM1\MSVOA_V\Data\VV012623\
 Data File : VV029962.D
 Acq On : 26 Jan 2023 14:31
 Operator : SY/MD
 Sample : 01295-07 10X
 Misc : 25.0mL/MSVOA_V/WATER
 ALS Vial : 10 Sample Multiplier: 1

Instrument :
 MSVOA_V
 ClientSampleId :
 COLD0

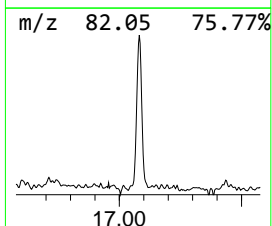
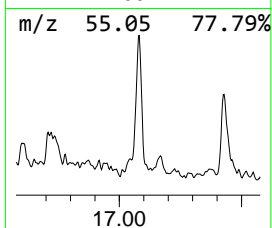
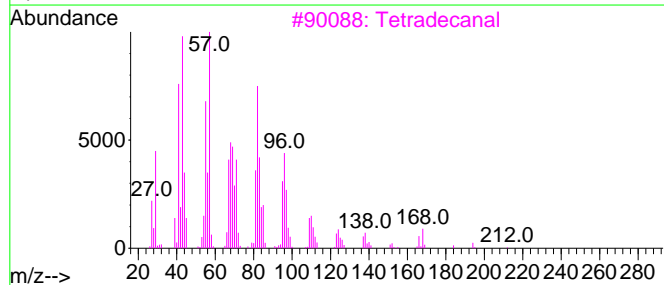
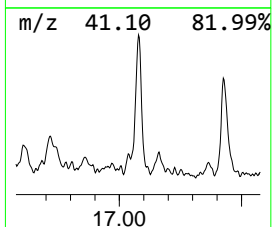
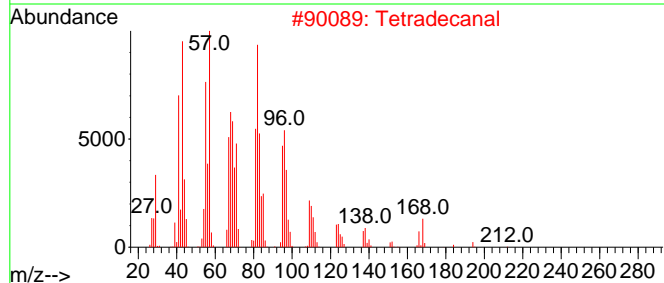
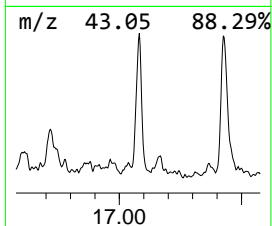
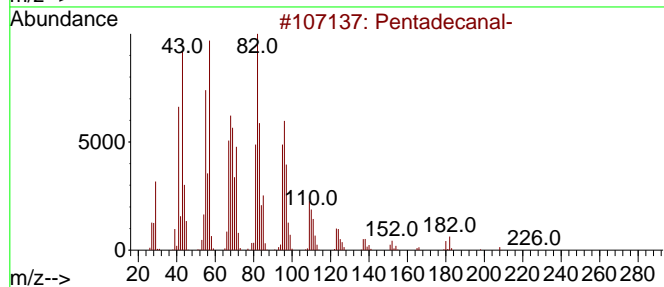
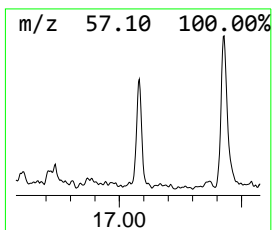
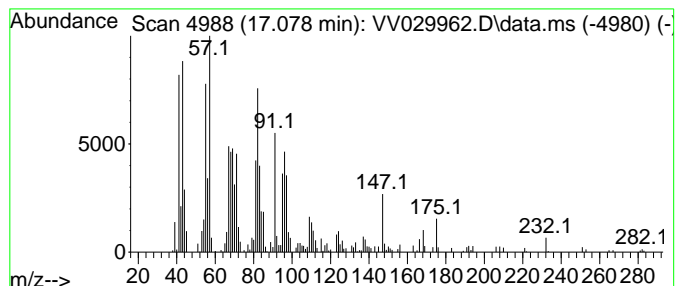
Quant Method : Z:\voasrv\HPCHEM1\MSVOA_V\Method\SFAMVTR011223WMA.M
 Quant Title : TRACE VOA SFAM1.0

TIC Library : C:\Database\NIST20.L
 TIC Integration Parameters: LSCINT.P

 Peak Number 16 Pentadecanal- Concentration Rank 5

R.T.	EstConc	Area	Relative to ISTD	R.T.
17.078	1.29 ug/L	169019	1,4-Dichlorobenzene-d4	11.236

Hit# of 5	Tentative ID	MW	MolForm	CAS#	Qual
1	Pentadecanal-	226	C15H30O	002765-11-9	93
2	Tetradecanal	212	C14H28O	000124-25-4	93
3	Tetradecanal	212	C14H28O	000124-25-4	93
4	Tetradecanal	212	C14H28O	000124-25-4	90
5	Pentadecanal-	226	C15H30O	002765-11-9	90



Data Path : Z:\voasrv\HPCHEM1\MSVOA_V\Data\VV012623\
 Data File : VV029962.D
 Acq On : 26 Jan 2023 14:31
 Operator : SY/MD
 Sample : 01295-07 10X
 Misc : 25.0mL/MSVOA_V/WATER
 ALS Vial : 10 Sample Multiplier: 1

Instrument :
 MSVOA_V
 ClientSampleId :
 COLD0

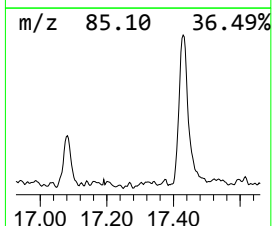
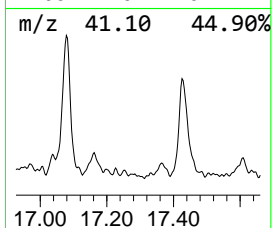
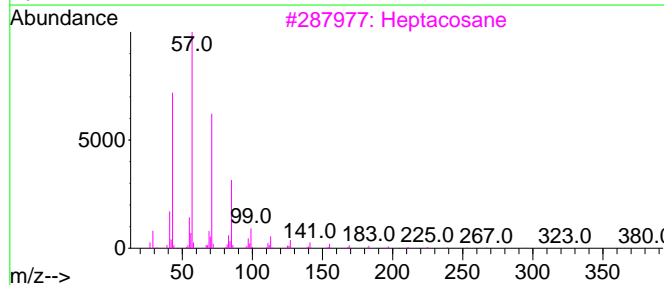
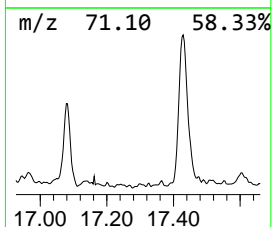
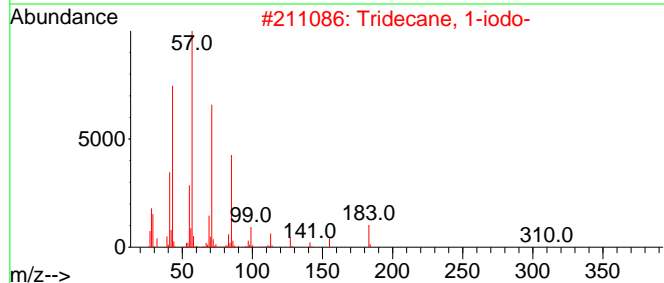
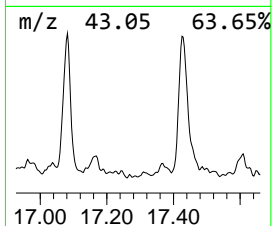
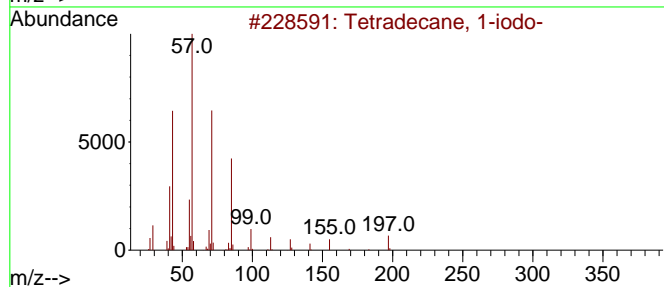
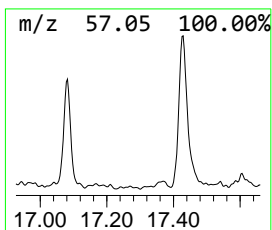
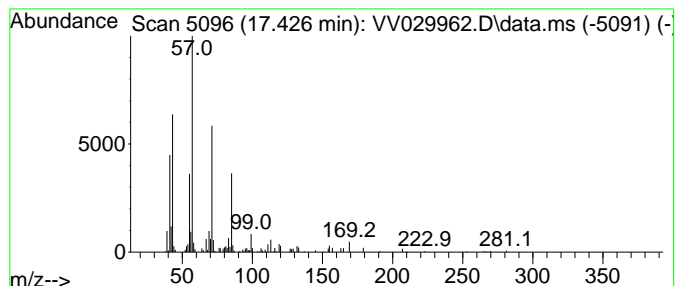
Quant Method : Z:\voasrv\HPCHEM1\MSVOA_V\Method\SFAMVTR011223WMA.M
 Quant Title : TRACE VOA SFAM1.0

TIC Library : C:\Database\NIST20.L
 TIC Integration Parameters: LSCINT.P

 Peak Number 17 Tetradecane, 1-iodo- Concentration Rank 15

R.T.	EstConc	Area	Relative to ISTD	R.T.
17.426	0.54 ug/L	71019	1,4-Dichlorobenzene-d4	11.236

Hit#	of 5	Tentative ID	MW	MolForm	CAS#	Qual
1		Tetradecane, 1-iodo-	324	C14H29I	019218-94-1	80
2		Tridecane, 1-iodo-	310	C13H27I	035599-77-0	80
3		Heptacosane	380	C27H56	000593-49-7	78
4		Dodecane, 1-iodo-	296	C12H25I	004292-19-7	78
5		Dodecane, 1-iodo-	296	C12H25I	004292-19-7	78



Data Path : Z:\voasrv\HPCHEM1\MSVOA_V\Data\VW012623\
 Data File : VW029962.D
 Acq On : 26 Jan 2023 14:31
 Operator : SY/MD
 Sample : 01295-07 10X
 Misc : 25.0mL/MSVOA_V/WATER
 ALS Vial : 10 Sample Multiplier: 1

Instrument :
 MSVOA_V
 ClientSampleId :
 COLD0

Quant Method : Z:\voasrv\HPCHEM1\MSVOA_V\Method\SFAMVTR011223WMA.M
 Quant Title : TRACE VOA SFAM1.0

TIC Library : C:\Database\NIST0.L
 TIC Integration Parameters: LSCINT.P

TIC Top Hit name	RT	EstConc	Units	Response	--Internal Standard--			
					#	RT	Resp	Conc
1,3-Diazine	7.079	1.4	ug/L	153463	1	5.606	563875	5.0
Hexanal	8.239	0.5	ug/L	67433	2	8.841	624530	5.0
Heptanal	9.799	0.7	ug/L	84299	2	8.841	624530	5.0
Octanal	11.140	1.0	ug/L	126549	3	11.236	653756	5.0
Phenol	11.789	5.4	ug/L	701838	3	11.236	653756	5.0
Nonanal	12.329	0.8	ug/L	108253	3	11.236	653756	5.0
(DEL) Alkane: S...	12.834	0.9	ug/L	112495	3	11.236	653756	5.0
2-Decanone	13.307	0.6	ug/L	76598	3	11.236	653756	5.0
2-Allylphenol	13.866	1.0	ug/L	134805	3	11.236	653756	5.0
2-Undecanone	14.313	0.6	ug/L	78005	3	11.236	653756	5.0
(DEL) Alkane: S...	14.799	0.5	ug/L	66275	3	11.236	653756	5.0
(DEL) Alkane: C...	15.365	3.3	ug/L	426951	3	11.236	653756	5.0
1-Chloroundecane	15.760	0.9	ug/L	115687	3	11.236	653756	5.0
(DEL) Alkane: C...	15.934	3.5	ug/L	453617	3	11.236	653756	5.0
Pentadecanal-	17.078	1.3	ug/L	169019	3	11.236	653756	5.0
Tetradecane, 1-...	17.426	0.5	ug/L	71019	3	11.236	653756	5.0