

Data Path : Z:\voasrv\HPCHEM1\MSVOA_V\Data\VW012624\
 Data File : VW033877.D
 Acq On : 26 Jan 2024 11:09
 Operator : SY/MD
 Sample : P1213-04
 Misc : 5.0mL/MSVOA_V/WATER
 ALS Vial : 7 Sample Multiplier: 1

Instrument :
 MSVOA_V
 ClientSampleId :

Quant Time: Jan 29 02:01:21 2024
 Quant Method : Z:\voasrv\HPCHEM1\MSVOA_V\Method\SFAMVLM011024WMA.M
 Quant Title : VOC Analysis
 QLast Update : Mon Jan 29 01:58:36 2024
 Response via : Initial Calibration

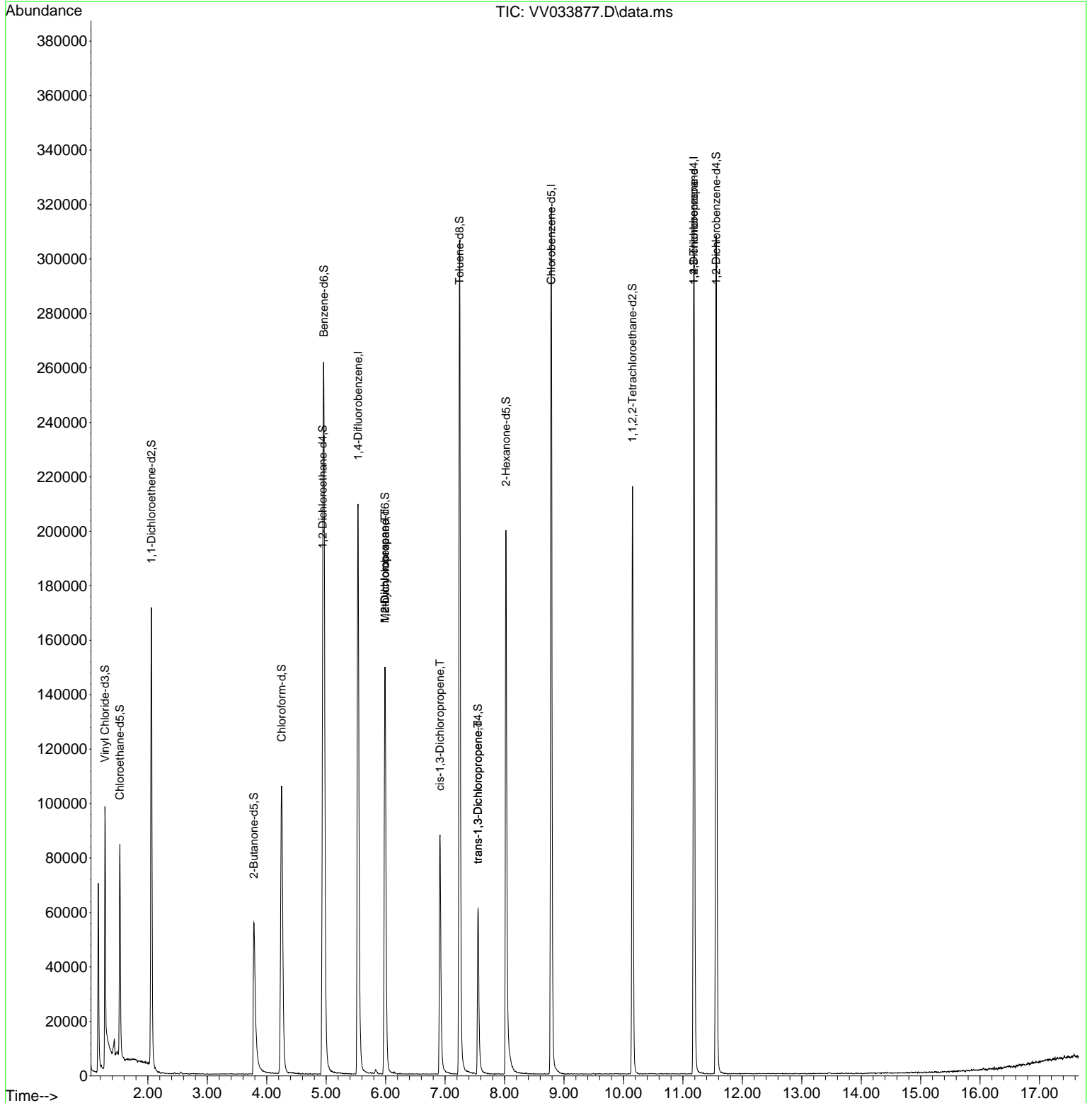
Compound	R.T.	QIon	Response	Conc	Units	Dev(Min)
Internal Standards						
1) 1,4-Difluorobenzene	5.535	114	179448	50.000	ug/L	0.00
28) Chlorobenzene-d5	8.786	117	168377	50.000	ug/L	0.00
58) 1,4-Dichlorobenzene-d4	11.185	152	83043	50.000	ug/L	0.00
System Monitoring Compounds						
4) Vinyl Chloride-d3	1.278	65	62002	44.957	ug/L	0.00
Spiked Amount	50.000	Range 60 - 135	Recovery =	89.920%		
7) Chloroethane-d5	1.529	69	51323	46.991	ug/L	0.00
Spiked Amount	50.000	Range 70 - 130	Recovery =	93.980%		
11) 1,1-Dichloroethene-d2	2.060	65	28700	48.354	ug/L	0.00
Spiked Amount	50.000	Range 60 - 125	Recovery =	96.700%		
21) 2-Butanone-d5	3.783	46	91238	96.450	ug/L	0.00
Spiked Amount	100.000	Range 40 - 130	Recovery =	96.450%		
24) Chloroform-d	4.249	84	112817	45.748	ug/L	0.00
Spiked Amount	50.000	Range 70 - 125	Recovery =	91.500%		
26) 1,2-Dichloroethane-d4	4.941	65	84178	52.830	ug/L	0.00
Spiked Amount	50.000	Range 70 - 125	Recovery =	105.660%		
32) Benzene-d6	4.960	84	221336	46.238	ug/L	0.00
Spiked Amount	50.000	Range 70 - 125	Recovery =	92.480%		
36) 1,2-Dichloropropane-d6	5.989	67	71215	45.197	ug/L	0.00
Spiked Amount	50.000	Range 70 - 120	Recovery =	90.400%		
41) Toluene-d8	7.243	98	201165	46.642	ug/L	0.00
Spiked Amount	50.000	Range 80 - 120	Recovery =	93.280%		
43) trans-1,3-Dichloroprop...	7.555	79	36354	46.684	ug/L	0.00
Spiked Amount	50.000	Range 60 - 125	Recovery =	93.360%		
47) 2-Hexanone-d5	8.024	63	68534	104.858	ug/L	0.00
Spiked Amount	100.000	Range 45 - 130	Recovery =	104.860%		
56) 1,1,2,2-Tetrachloroeth...	10.153	84	98869	49.151	ug/L	0.00
Spiked Amount	50.000	Range 65 - 120	Recovery =	98.300%		
66) 1,2-Dichlorobenzene-d4	11.561	152	78048	49.537	ug/L	0.00
Spiked Amount	50.000	Range 80 - 120	Recovery =	99.080%		
Target Compounds						
35) Methylcyclohexane	5.989	83	17230	7.589	ug/L #	16
37) 1,2-Dichloropropane	5.989	63	8875	6.521	ug/L #	88
39) cis-1,3-Dichloropropene	6.915	75	2394	1.053	ug/L #	46
44) trans-1,3-Dichloropropene	7.555	75	1763	0.842	ug/L	94
61) 1,2,3-Trichloropropane	11.185	75	10409	7.063	ug/L #	66

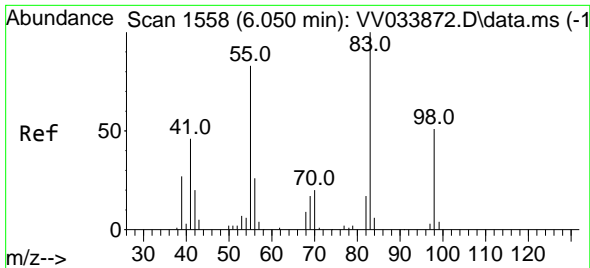
(#) = qualifier out of range (m) = manual integration (+) = signals summed

Data Path : Z:\voasrv\HPCHEM1\MSVOA_V\Data\VV012624\
 Data File : VV033877.D
 Acq On : 26 Jan 2024 11:09
 Operator : SY/MD
 Sample : P1213-04
 Misc : 5.0mL/MSVOA_V/WATER
 ALS Vial : 7 Sample Multiplier: 1

Instrument :
 MSVOA_V
 ClientSampleId :

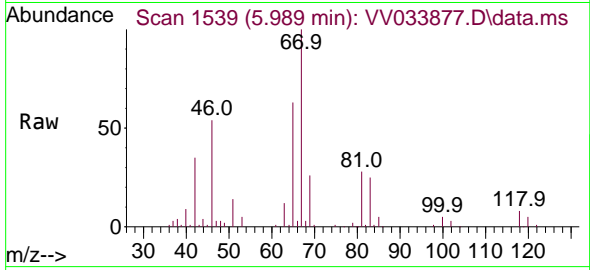
Quant Time: Jan 29 02:01:21 2024
 Quant Method : Z:\voasrv\HPCHEM1\MSVOA_V\Method\SFAMVLM011024WMA.M
 Quant Title : VOC Analysis
 QLast Update : Mon Jan 29 01:58:36 2024
 Response via : Initial Calibration



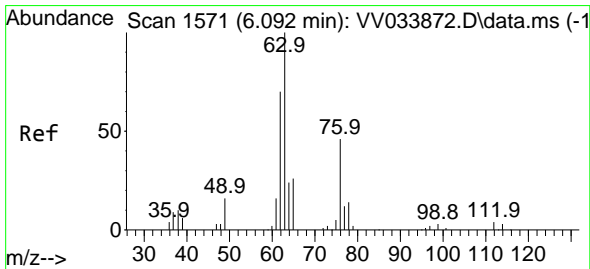
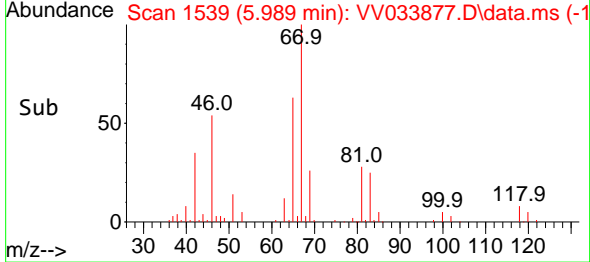
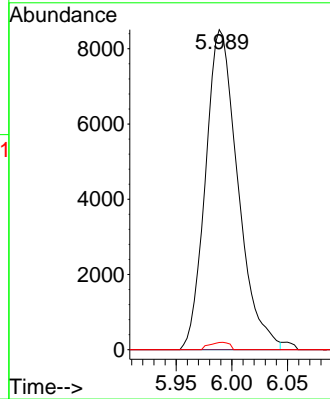


#35
 Methylcyclohexane
 Concen: 7.589 ug/L
 RT: 5.989 min Scan# 1539
 Delta R.T. -0.061 min
 Lab File: VV033877.D
 Acq: 26 Jan 2024 11:09

Instrument :
 MSVOA_V
 ClientSampleId :

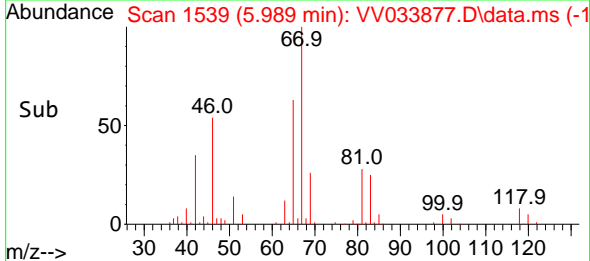
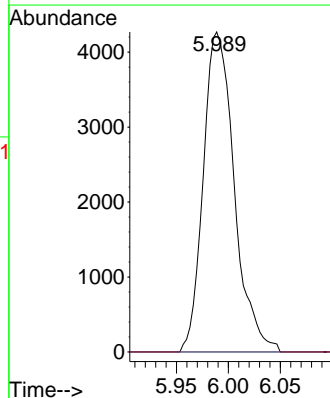
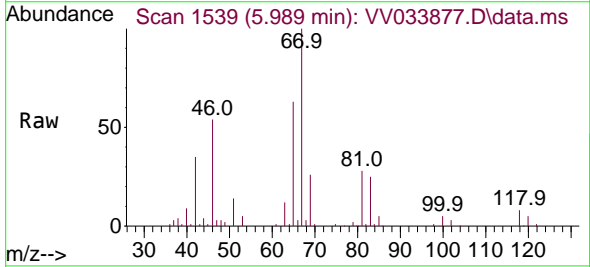


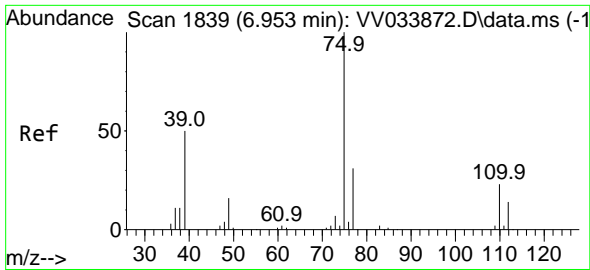
Tgt Ion: 83 Resp: 17230
 Ion Ratio Lower Upper
 83 100
 55 0.0 67.1 100.7#
 98 1.4 37.7 56.5#



#37
 1,2-Dichloropropane
 Concen: 6.521 ug/L
 RT: 5.989 min Scan# 1539
 Delta R.T. -0.103 min
 Lab File: VV033877.D
 Acq: 26 Jan 2024 11:09

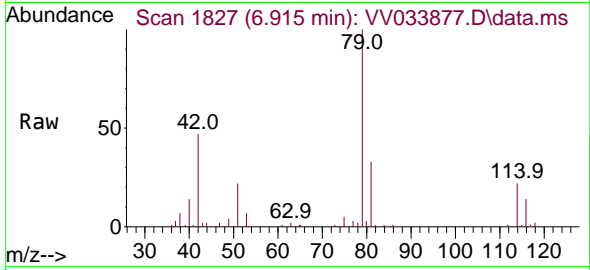
Tgt Ion: 63 Resp: 8875
 Ion Ratio Lower Upper
 63 100
 112 0.0 3.1 4.7#



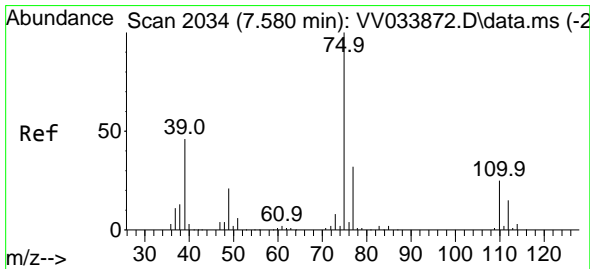
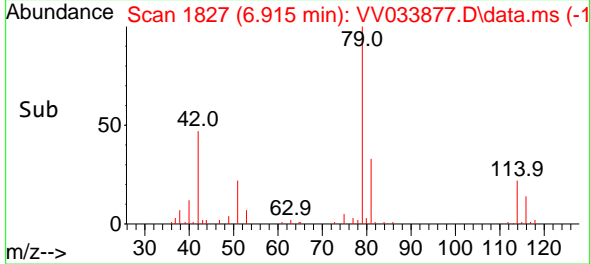
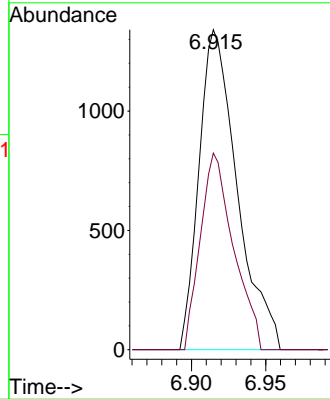


#39
 cis-1,3-Dichloropropene
 Concen: 1.053 ug/L
 RT: 6.915 min Scan# 1839
 Delta R.T. -0.039 min
 Lab File: VV033877.D
 Acq: 26 Jan 2024 11:09

Instrument : MSVOA_V
 ClientSampleId :

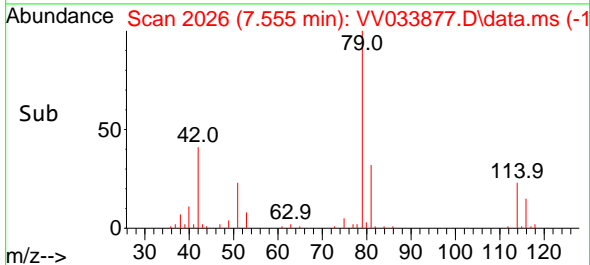
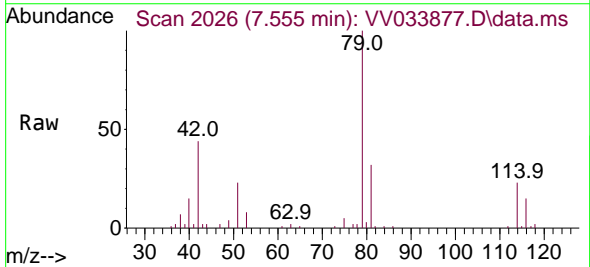
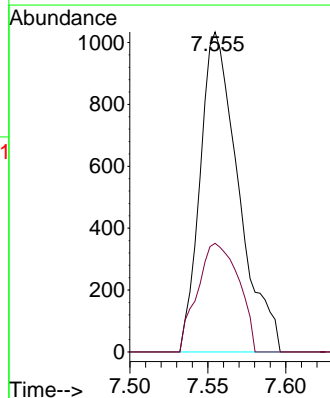


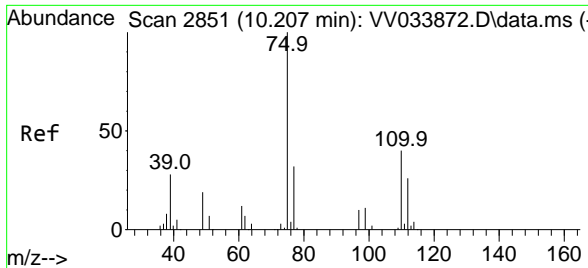
Tgt Ion: 75 Resp: 2394
 Ion Ratio Lower Upper
 75 100
 77 61.4 22.0 41.0#



#44
 trans-1,3-Dichloropropene
 Concen: 0.842 ug/L
 RT: 7.555 min Scan# 2026
 Delta R.T. -0.026 min
 Lab File: VV033877.D
 Acq: 26 Jan 2024 11:09

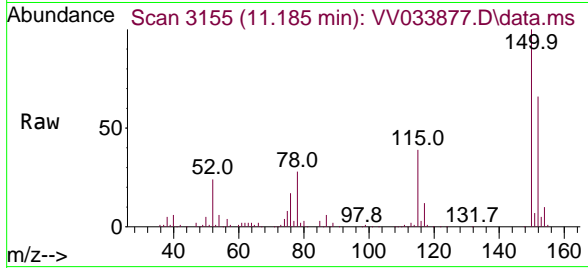
Tgt Ion: 75 Resp: 1763
 Ion Ratio Lower Upper
 75 100
 77 33.9 21.6 40.0





#61
 1,2,3-Trichloropropane
 Concen: 7.063 ug/L
 RT: 11.185 min Scan# 31
 Delta R.T. 0.977 min
 Lab File: VV033877.D
 Acq: 26 Jan 2024 11:09

Instrument :
 MSVOA_V
 ClientSampleId :



Tgt Ion: 75 Resp: 10409

Ion	Ratio	Lower	Upper
75	100		
77	35.1	25.3	37.9
110	2.5	29.5	44.3#

