

Data Path : Z:\voasrv\HPCHEM1\MSVOA\_V\Data\VV012624\  
 Data File : VV033883.D  
 Acq On : 26 Jan 2024 13:33  
 Operator : SY/MD  
 Sample : P1252-01  
 Misc : 5.0mL/MSVOA\_V/WATER  
 ALS Vial : 13 Sample Multiplier: 1

Instrument :  
 MSVOA\_V  
 ClientSampleId :  
 DCMM9

Integration Parameters: LSCINT.P

Integrator: RTE  
 Smoothing : OFF  
 Sampling : 1  
 Start Thrs : 0.2  
 Stop Thrs : 0

Filtering: 5  
 Min Area: 0 % of largest Peak  
 Max Peaks: 100  
 Peak Location: TOP

If leading or trailing edge < 100 prefer < Baseline drop else tangent >  
 Peak separation: 5

Method : Z:\voasrv\HPCHEM1\MSVOA\_V\Method\SFAMVLM011024WMA.M  
 Title : VOC Analysis

Signal : TIC: VV033883.D\data.ms

peak #	R.T. min	first scan	max scan	last scan	PK TY	peak height	corr. area	corr. % max.	% of total
1	1.166	33	39	52	rBV	63483	68763	9.41%	1.139%
2	1.282	68	75	108	rBV2	190515	389231	53.25%	6.445%
3	2.060	309	317	343	rVB	196081	303291	41.49%	5.022%
4	2.442	434	436	437	rBV	310	126	0.02%	0.002%
5	2.484	444	449	452	rVB2	378	309	0.04%	0.005%
6	2.513	452	458	461	rBV3	314	364	0.05%	0.006%
7	2.555	468	471	473	rBV2	89	51	0.01%	0.001%
8	2.587	480	481	482	rBV2	98	28	0.00%	0.000%
9	2.722	519	523	526	rBV2	274	224	0.03%	0.004%
10	2.741	526	529	531	rBV	275	169	0.02%	0.003%
11	2.931	584	588	592	rBV2	231	187	0.03%	0.003%
12	2.957	593	596	600	rBV2	142	130	0.02%	0.002%
13	3.047	622	624	626	rBV	213	129	0.02%	0.002%
14	3.079	632	634	638	rVB	95	43	0.01%	0.001%
15	3.156	654	658	661	rBV2	323	232	0.03%	0.004%
16	3.172	661	663	666	rVB	198	107	0.01%	0.002%
17	3.294	698	701	705	rBV	125	71	0.01%	0.001%
18	3.317	705	708	710	rVB	123	62	0.01%	0.001%
19	3.333	710	713	716	rBV	128	72	0.01%	0.001%
20	3.433	742	744	746	rBV	122	57	0.01%	0.001%
21	3.571	784	787	789	rBV	118	65	0.01%	0.001%
22	3.619	798	802	809	rBV2	209	273	0.04%	0.005%
23	3.696	824	826	828	rVB	148	33	0.00%	0.001%
24	3.786	845	854	889	rBV	53541	139842	19.13%	2.316%
25	4.249	982	998	1021	rBV	113648	288425	39.46%	4.776%
26	4.539	1081	1088	1089	rBV2	228	260	0.04%	0.004%
27	4.603	1106	1108	1111	rBV2	69	53	0.01%	0.001%
28	4.616	1111	1112	1114	rBV2	113	32	0.00%	0.001%
29	4.719	1141	1144	1147	rBV	118	95	0.01%	0.002%
30	4.770	1157	1160	1162	rBV	158	107	0.01%	0.002%
31	4.860	1185	1188	1190	rBV	116	87	0.01%	0.001%
32	4.957	1201	1218	1246	rBV2	278753	730947	100.00%	12.104%
33	5.471	1376	1378	1381	rBV	142	79	0.01%	0.001%
34	5.535	1386	1398	1428	rBV	243562	498641	68.22%	8.257%
35	5.838	1487	1492	1499	rVB4	523	711	0.10%	0.012%
36	5.989	1527	1539	1565	rBV	158787	326734	44.70%	5.410%

Data Path : Z:\voasrv\HPCHEM1\MSVOA\_V\Data\VW012624\  
 Data File : VW033883.D  
 Acq On : 26 Jan 2024 13:33  
 Operator : SY/MD  
 Sample : P1252-01  
 Misc : 5.0mL/MSVOA\_V/WATER  
 ALS Vial : 13 Sample Multiplier: 1

Instrument :  
 MSVOA\_V  
 ClientSampleId :  
 DCMM9

Integration Parameters: LSCINT.P

Integrator: RTE  
 Smoothing : OFF  
 Sampling : 1  
 Start Thrs: 0.2  
 Stop Thrs : 0

Filtering: 5  
 Min Area: 0 % of largest Peak  
 Max Peaks: 100  
 Peak Location: TOP

If leading or trailing edge < 100 prefer < Baseline drop else tangent >  
 Peak separation: 5

Method : Z:\voasrv\HPCHEM1\MSVOA\_V\Method\SFAMVLM011024WMA.M  
 Title : VOC Analysis

37	6.191	1600	1602	1604	rBV	120	30	0.00%	0.000%
38	6.297	1633	1635	1638	rBV	126	68	0.01%	0.001%
39	6.352	1650	1652	1656	rBV2	90	61	0.01%	0.001%
40	6.400	1663	1667	1670	rBV2	196	180	0.02%	0.003%
41	6.445	1677	1681	1685	rBV2	226	182	0.02%	0.003%
42	6.506	1697	1700	1704	rBV	262	198	0.03%	0.003%
43	6.574	1718	1721	1725	rVB	120	84	0.01%	0.001%
44	6.606	1725	1731	1735	rBV2	142	153	0.02%	0.003%
45	6.651	1741	1745	1751	rBV2	169	223	0.03%	0.004%
46	6.741	1765	1773	1775	rBV	184	211	0.03%	0.003%
47	6.828	1798	1800	1805	rVB	211	182	0.02%	0.003%
48	6.867	1805	1812	1814	rBV2	181	176	0.02%	0.003%
49	6.915	1817	1827	1855	rBV	89403	166779	22.82%	2.762%
50	7.178	1907	1909	1916	rVB4	296	274	0.04%	0.005%
51	7.243	1916	1929	1959	rBV	332969	587800	80.42%	9.733%
52	7.555	2017	2026	2050	rBV	60877	109276	14.95%	1.809%
53	7.825	2108	2110	2112	rBV	108	53	0.01%	0.001%
54	7.873	2121	2125	2128	rBV2	324	285	0.04%	0.005%
55	7.937	2142	2145	2146	rBV	73	42	0.01%	0.001%
56	8.024	2163	2172	2206	rBV	195845	357126	48.86%	5.914%
57	8.571	2341	2342	2343	rBV	178	51	0.01%	0.001%
58	8.609	2352	2354	2362	rVB	249	183	0.03%	0.003%
59	8.654	2364	2368	2370	rBV2	217	152	0.02%	0.003%
60	8.786	2397	2409	2446	rBV	363991	604231	82.66%	10.005%
61	9.043	2486	2489	2491	rBV	132	72	0.01%	0.001%
62	9.056	2491	2493	2495	rVV	147	57	0.01%	0.001%
63	9.294	2564	2567	2569	rBV	200	98	0.01%	0.002%
64	9.320	2572	2575	2581	rBV2	210	208	0.03%	0.003%
65	9.445	2611	2614	2615	rBV	91	48	0.01%	0.001%
66	9.487	2622	2627	2633	rBV2	217	303	0.04%	0.005%
67	9.596	2657	2661	2665	rBV2	205	198	0.03%	0.003%
68	9.667	2681	2683	2684	rBV	40	18	0.00%	0.000%
69	9.683	2684	2688	2690	rBV2	168	123	0.02%	0.002%
70	9.738	2702	2705	2708	rBV	140	98	0.01%	0.002%
71	9.818	2727	2730	2732	rBV2	163	118	0.02%	0.002%
72	9.883	2746	2750	2751	rBV	168	106	0.01%	0.002%
73	9.973	2776	2778	2781	rBV2	144	74	0.01%	0.001%
74	10.153	2822	2834	2857	rBV	216891	339008	46.38%	5.614%
75	10.349	2892	2895	2896	rBV	136	79	0.01%	0.001%
76	10.400	2906	2911	2913	rBV2	178	142	0.02%	0.002%

Data Path : Z:\voasrv\HPCHEM1\MSVOA\_V\Data\VW012624\  
 Data File : VW033883.D  
 Acq On : 26 Jan 2024 13:33  
 Operator : SY/MD  
 Sample : P1252-01  
 Misc : 5.0mL/MSVOA\_V/WATER  
 ALS Vial : 13 Sample Multiplier: 1

Instrument :  
 MSVOA\_V  
 ClientSampleId :  
 DCMM9

Integration Parameters: LSCINT.P

Integrator: RTE  
 Smoothing : OFF Filtering: 5  
 Sampling : 1 Min Area: 0 % of largest Peak  
 Start Thrs: 0.2 Max Peaks: 100  
 Stop Thrs : 0 Peak Location: TOP

If leading or trailing edge < 100 prefer < Baseline drop else tangent >  
 Peak separation: 5

Method : Z:\voasrv\HPCHEM1\MSVOA\_V\Method\SFAMVLM011024WMA.M  
 Title : VOC Analysis

77	10.780	3022	3029	3032	rBV2	255	381	0.05%	0.006%
78	10.883	3058	3061	3066	rBV2	176	157	0.02%	0.003%
79	11.185	3144	3155	3189	rBV	374313	585415	80.09%	9.694%
80	11.510	3255	3256	3259	rBV	155	93	0.01%	0.002%
81	11.561	3260	3272	3298	rVV	333122	533430	72.98%	8.833%
82	11.722	3319	3322	3325	rBV	173	124	0.02%	0.002%
83	11.780	3337	3340	3343	rBV2	180	158	0.02%	0.003%
84	11.940	3388	3390	3394	rBV	193	115	0.02%	0.002%
85	12.680	3618	3620	3623	rBV	188	94	0.01%	0.002%
86	12.693	3623	3624	3625	rBV	281	62	0.01%	0.001%
87	12.989	3713	3716	3717	rBV	147	78	0.01%	0.001%
88	13.455	3859	3861	3862	rBV	283	83	0.01%	0.001%
89	13.503	3874	3876	3878	rBV	222	98	0.01%	0.002%

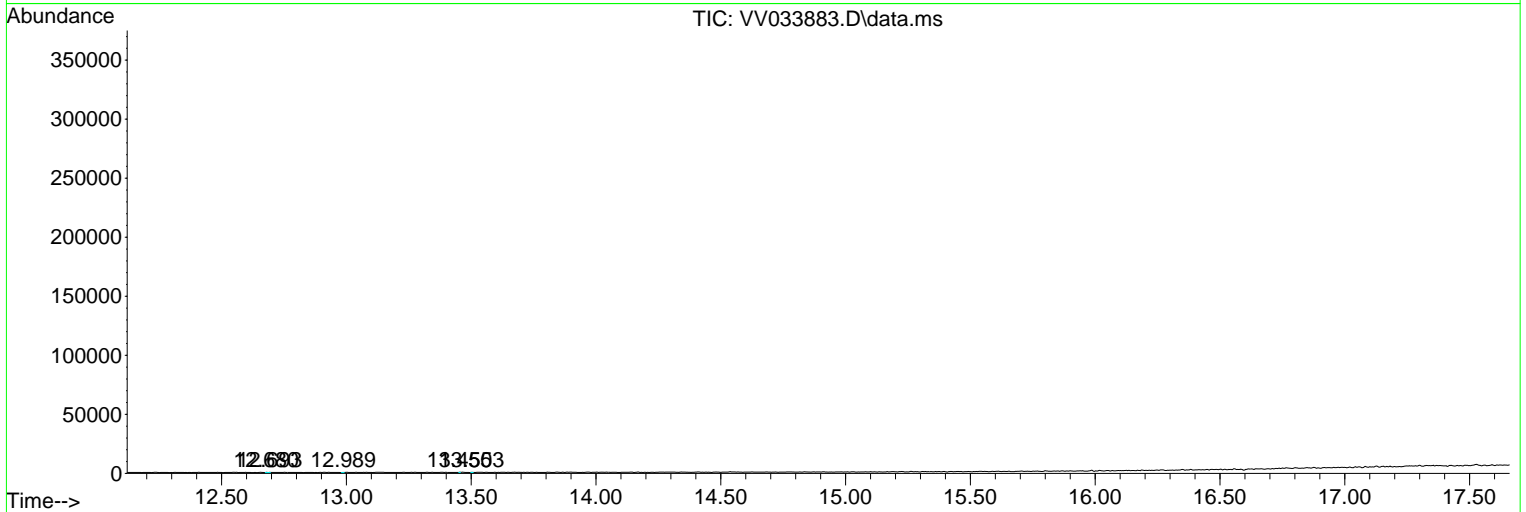
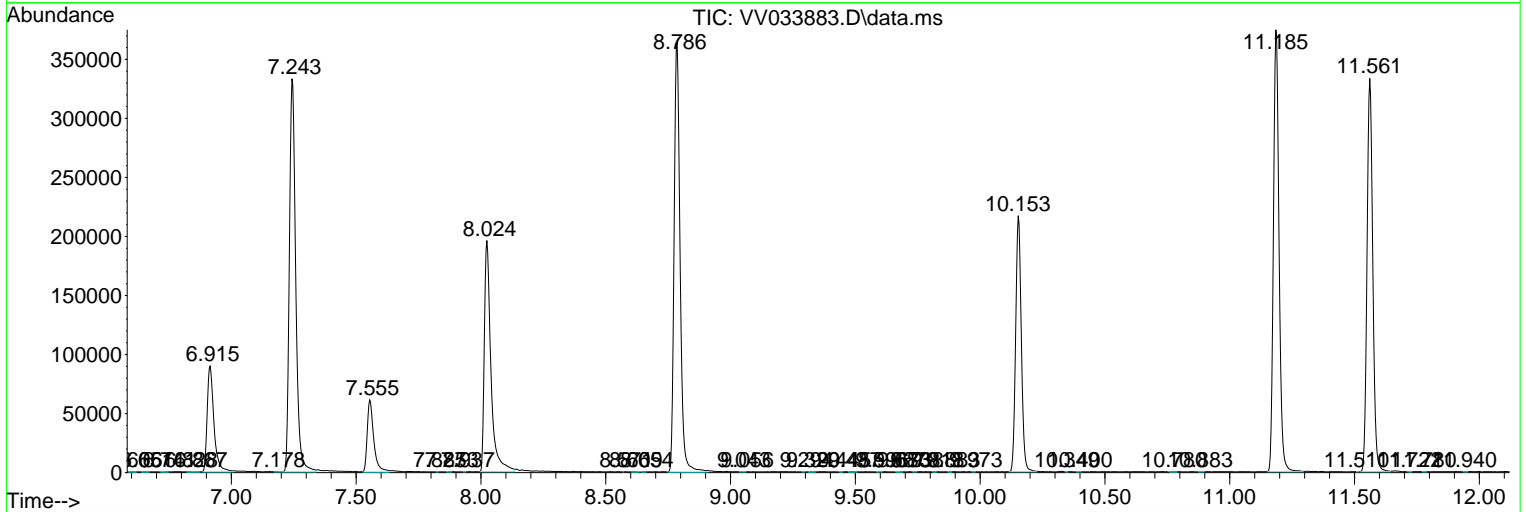
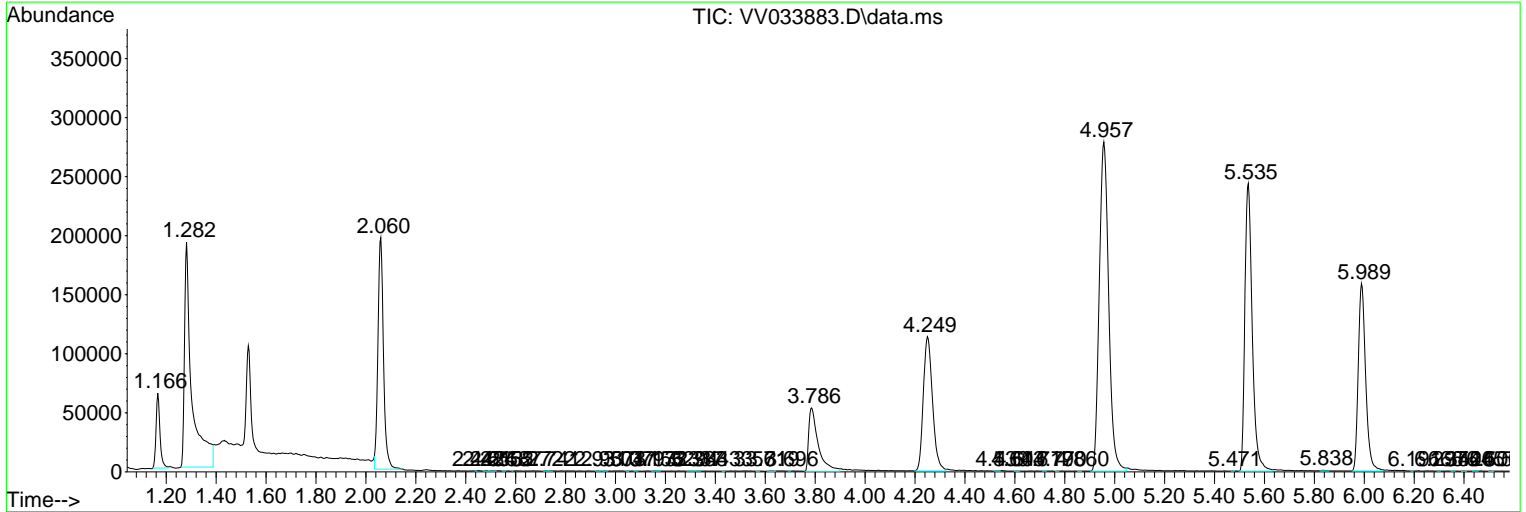
Sum of corrected areas: 6039068

Data Path : Z:\voasrv\HPCHEM1\MSVOA\_V\Data\VV012624\  
 Data File : VV033883.D  
 Acq On : 26 Jan 2024 13:33  
 Operator : SY/MD  
 Sample : P1252-01  
 Misc : 5.0mL/MSVOA\_V/WATER  
 ALS Vial : 13 Sample Multiplier: 1

Instrument :  
 MSVOA\_V  
 ClientSampleId :  
 DCMM9

Quant Method : Z:\voasrv\HPCHEM1\MSVOA\_V\Method\SFAMVLM011024WMA.M  
 Quant Title : VOC Analysis

TIC Library : C:\Database\NIST20.L  
 TIC Integration Parameters: LSCINT.P



Data Path : Z:\voasrv\HPCHEM1\MSVOA\_V\Data\VV012624\  
 Data File : VV033883.D  
 Acq On : 26 Jan 2024 13:33  
 Operator : SY/MD  
 Sample : P1252-01  
 Misc : 5.0mL/MSVOA\_V/WATER  
 ALS Vial : 13 Sample Multiplier: 1

Instrument :  
 MSVOA\_V  
 ClientSampleId :  
 DCMM9

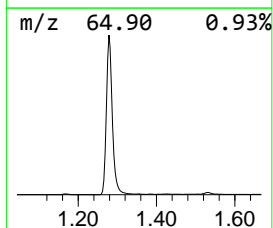
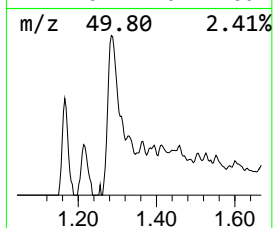
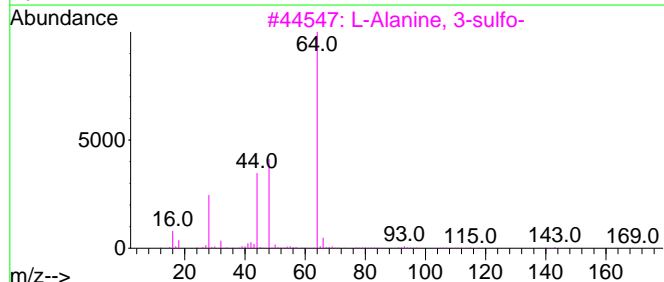
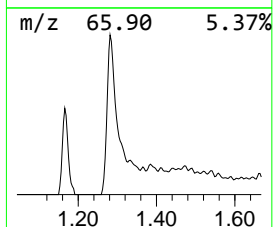
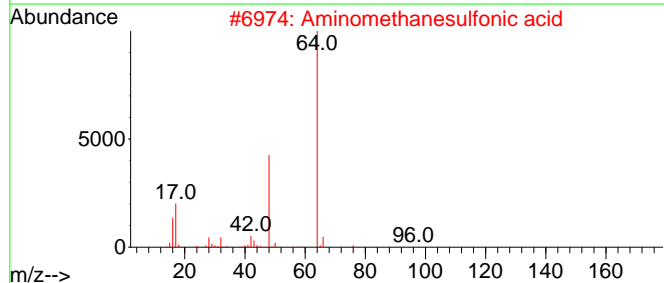
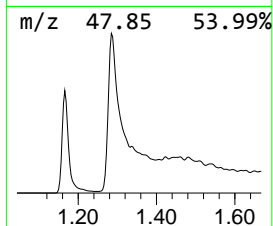
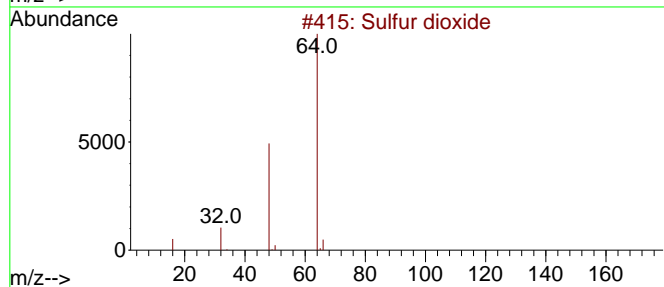
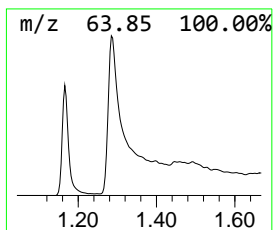
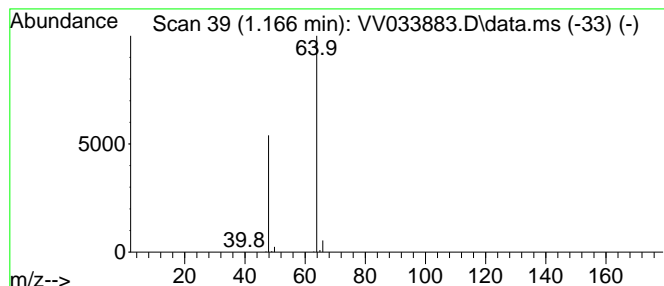
Quant Method : Z:\voasrv\HPCHEM1\MSVOA\_V\Method\SFAMVLM011024WMA.M  
 Quant Title : VOC Analysis

TIC Library : C:\Database\NIST20.L  
 TIC Integration Parameters: LSCINT.P

\*\*\*\*\*  
 Peak Number 1 Sulfur dioxide Concentration Rank 2

R.T.	EstConc	Area	Relative to ISTD	R.T.
1.166	6.90 ug/L	68763	1,4-Difluorobenzene	5.535

Hit#	of	5	Tentative ID	MW	MolForm	CAS#	Qual
1			Sulfur dioxide	64	O2S	007446-09-5	83
2			Aminomethanesulfonic acid	111	CH5NO3S	013881-91-9	74
3			L-Alanine, 3-sulfo-	169	C3H7NO5S	000498-40-8	9
4			Aminomethanesulfonic acid	111	CH5NO3S	013881-91-9	9
5			Aminomethanesulfonic acid	111	CH5NO3S	013881-91-9	9



Data Path : Z:\voasrv\HPCHEM1\MSVOA\_V\Data\VW012624\  
Data File : VW033883.D  
Acq On : 26 Jan 2024 13:33  
Operator : SY/MD  
Sample : P1252-01  
Misc : 5.0mL/MSVOA\_V/WATER  
ALS Vial : 13 Sample Multiplier: 1

Instrument :  
MSVOA\_V  
ClientSampleId :  
DCMM9

Quant Method : Z:\voasrv\HPCHEM1\MSVOA\_V\Method\SFAMVLM011024WMA.M  
Quant Title : VOC Analysis

TIC Library : C:\Database\NIST0.L  
TIC Integration Parameters: LSCINT.P

TIC Top Hit name	RT	EstConc	Units	Response	--Internal Standard--			
					#	RT	Resp	Conc
Sulfur dioxide	1.166	6.9	ug/L	68763	1	5.535	498641	50.0