

Data File : VV014403.D  
 Acq On : 27 Jan 2020 14:15  
 Operator : SY/MD  
 Sample : L1253-07  
 Misc : 25.0mL/MSVOA\_V/WATER  
 ALS Vial : 4 Sample Multiplier: 1

Instrument :  
 MSVOA\_V  
 ClientSampleId :  
 H0AC4

Quant Time: Jan 28 03:15:01 2020  
 Quant Method : Z:\VOASRV\HPCHEM1\MSVOA\_V\METHOD\SOMVTR010220WMA.M  
 Quant Title : TRACE VOA SOM01.0  
 QLast Update : Tue Jan 28 03:12:38 2020  
 Response via : Initial Calibration

Internal Standards	R.T.	QIon	Response	Conc	Units	Dev(Min)
1) 1,4-Difluorobenzene	5.66	114	903071	5.00	ug/L	0.00
28) Chlorobenzene-d5	8.89	117	837640	5.00	ug/L	0.00
60) 1,4-Dichlorobenzene-d4	11.29	152	380859	5.00	ug/L	0.00

System Monitoring Compounds

4) Vinyl Chloride-d3	1.32	65	197232	3.12	ug/L	0.00
Spiked Amount	5.000	Range	40 - 130	Recovery	=	62.40%
7) Chloroethane-d5	1.58	69	177929	3.64	ug/L	0.00
Spiked Amount	5.000	Range	65 - 130	Recovery	=	72.80%
11) 1,1-Dichloroethene-d2	2.13	63	234130	2.51	ug/L	0.00
Spiked Amount	5.000	Range	60 - 125	Recovery	=	50.20%#
20) 2-Butanone-d5	3.94	46	853485	56.23	ug/L	0.02
Spiked Amount	50.000	Range	40 - 130	Recovery	=	112.46%
24) Chloroform-d	4.40	84	556344	4.56	ug/L	0.00
Spiked Amount	5.000	Range	70 - 125	Recovery	=	91.20%
26) 1,2-Dichloroethane-d4	5.08	65	275197	4.50	ug/L	0.00
Spiked Amount	5.000	Range	70 - 130	Recovery	=	90.00%
32) Benzene-d6	5.10	84	1049770	4.20	ug/L	0.00
Spiked Amount	5.000	Range	70 - 125	Recovery	=	84.00%
36) 1,2-Dichloropropane-d6	6.11	67	368535	4.76	ug/L	0.00
Spiked Amount	5.000	Range	60 - 140	Recovery	=	95.20%
41) Toluene-d8	7.36	98	829424	3.63	ug/L	0.00
Spiked Amount	5.000	Range	70 - 130	Recovery	=	72.60%
43) trans-1,3-Dichloropropene-	7.66	79	131795	3.84	ug/L	0.00
Spiked Amount	5.000	Range	55 - 130	Recovery	=	76.80%
46) 2-Hexanone-d5	8.13	63	781679	53.85	ug/L	0.00
Spiked Amount	50.000	Range	45 - 130	Recovery	=	107.70%
57) 1,1,2,2-Tetrachloroethane-	10.25	84	276984	5.11	ug/L	0.00
Spiked Amount	5.000	Range	65 - 120	Recovery	=	102.20%
64) 1,2-Dichlorobenzene-d4	11.67	152	325529	4.55	ug/L	0.00
Spiked Amount	5.000	Range	80 - 120	Recovery	=	91.00%

Target Compounds

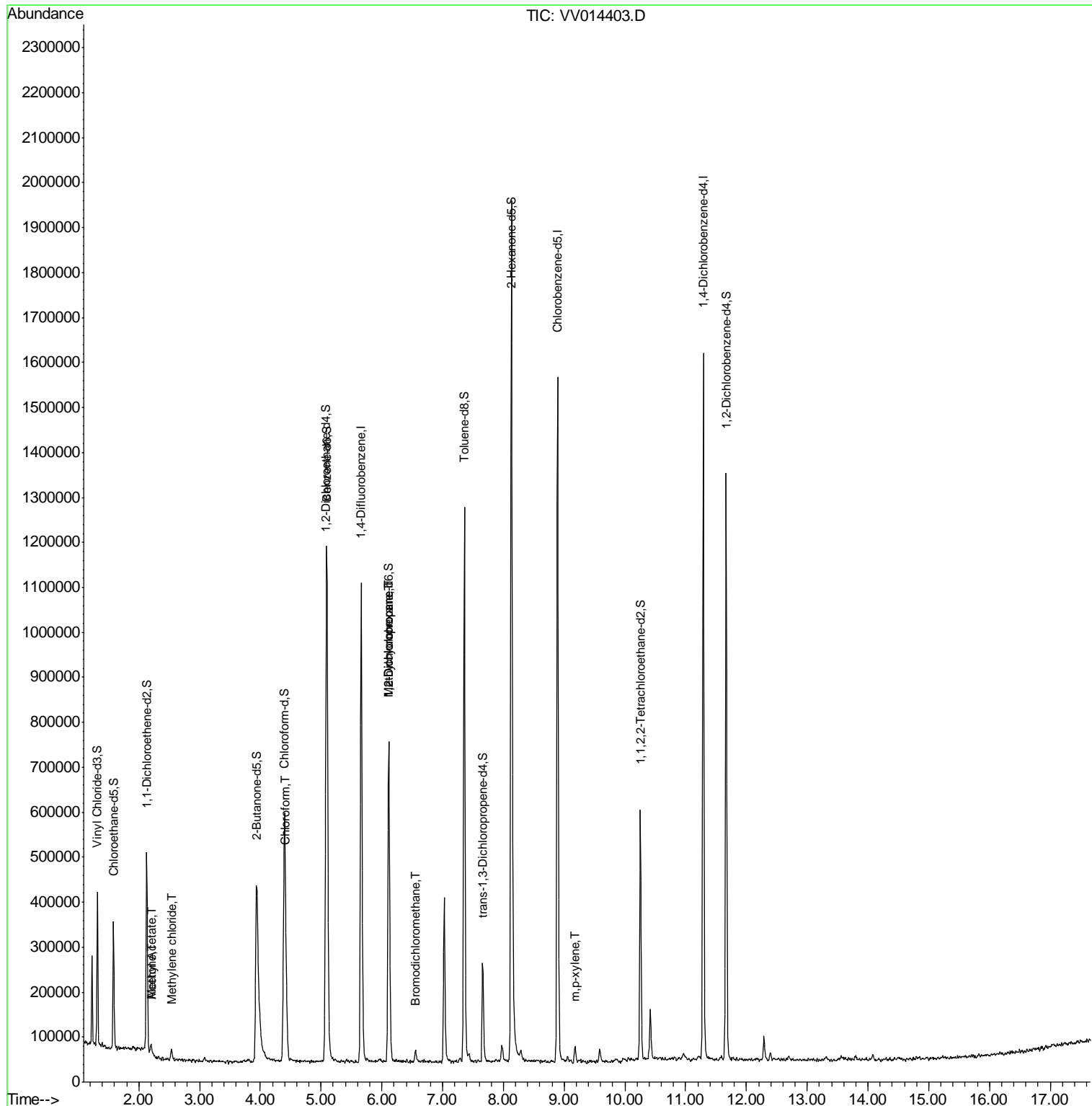
						Qvalue
13) Acetone	2.20	43	36187	3.462	ug/L	98
15) Methyl Acetate	2.20	43	35483	1.458	ug/L #	54
16) Methylene chloride	2.54	84	11575	0.176	ug/L	83
25) Chloroform	4.42	83	106445	0.935	ug/L	99
35) Methylcyclohexane	6.11	83	86419	0.797	ug/L #	20
37) 1,2-Dichloropropane	6.12	63	37453	0.575	ug/L #	88
38) Bromodichloromethane	6.56	83	17847	0.213	ug/L #	96
53) m,p-xylene	9.18	106	10509	0.094	ug/L	98

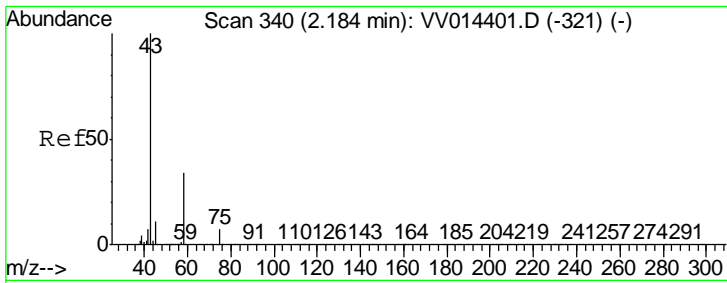
(#) = qualifier out of range (m) = manual integration (+) = signals summed

Data File : VV014403.D  
Acq On : 27 Jan 2020 14:15  
Operator : SY/MD  
Sample : L1253-07  
Misc : 25.0mL/MSVOA\_V/WATER  
ALS Vial : 4 Sample Multiplier: 1

Instrument :  
MSVOA\_V  
ClientSampled :  
H0AC4

Quant Time: Jan 28 03:15:01 2020  
Quant Method : Z:\VOASRV\HPCHEM1\MSVOA\_V\METHOD\SOMVTR010220WMA.M  
Quant Title : TRACE VOA SOM01.0  
QLast Update : Tue Jan 28 03:12:38 2020  
Response via : Initial Calibration

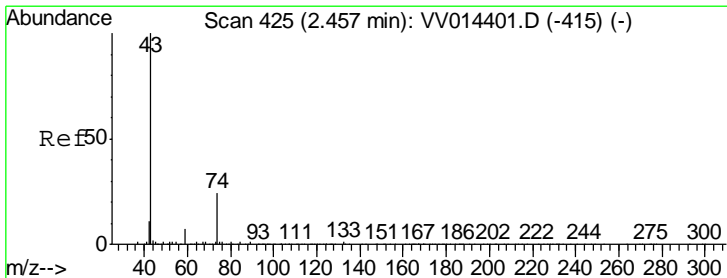
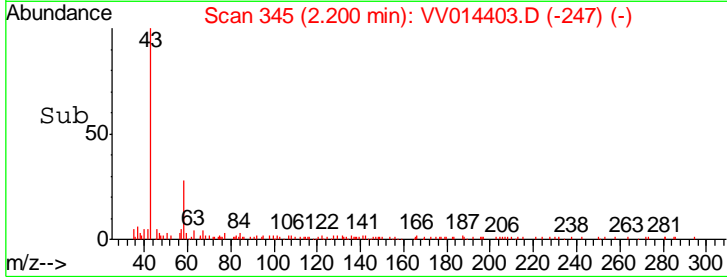
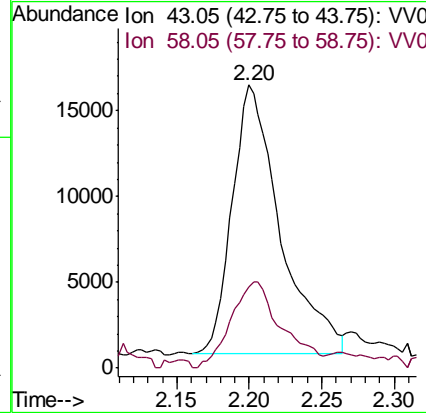
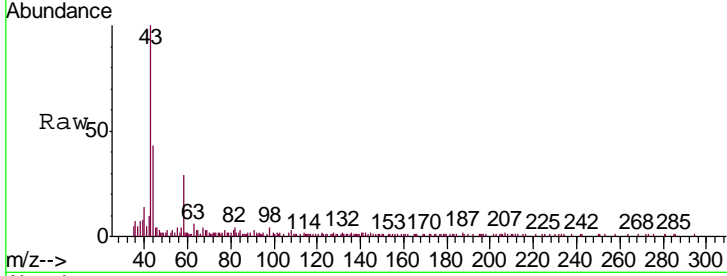




#13  
 Acetone  
 Concen: 3.462 ug/L  
 RT: 2.20 min Scan# 345  
 Delta R.T. 0.02 min  
 Lab File: VV014403.D  
 Acq: 27 Jan 2020 14:15

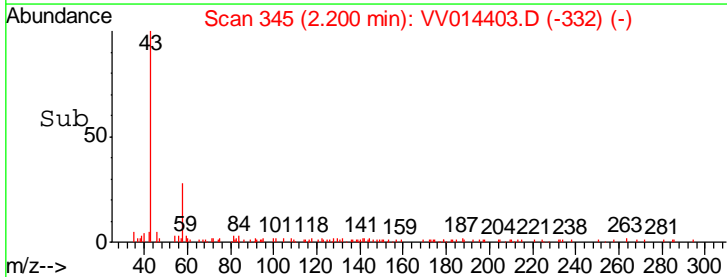
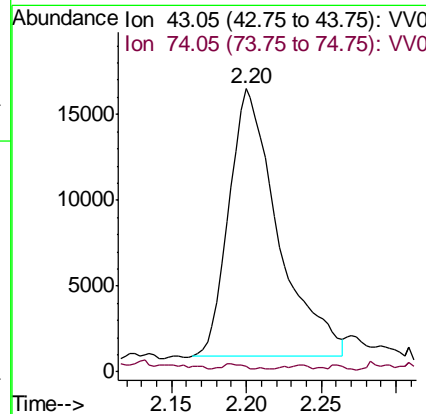
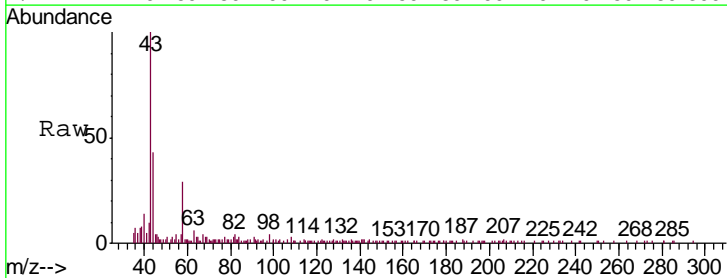
Instrument :  
 MSVOA\_V  
 ClientSampled :  
 H0AC4

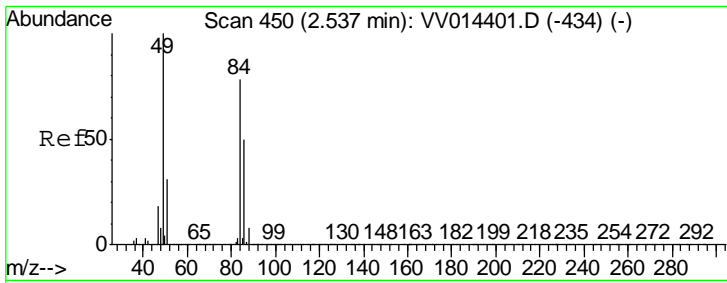
Tgt Ion: 43 Resp: 36187  
 Ion Ratio Lower Upper  
 43 100  
 58 34.1 0.0 66.0



#15  
 Methyl Acetate  
 Concen: 1.458 ug/L  
 RT: 2.20 min Scan# 345  
 Delta R.T. -0.26 min  
 Lab File: VV014403.D  
 Acq: 27 Jan 2020 14:15

Tgt Ion: 43 Resp: 35483  
 Ion Ratio Lower Upper  
 43 100  
 74 0.7 18.6 28.0#

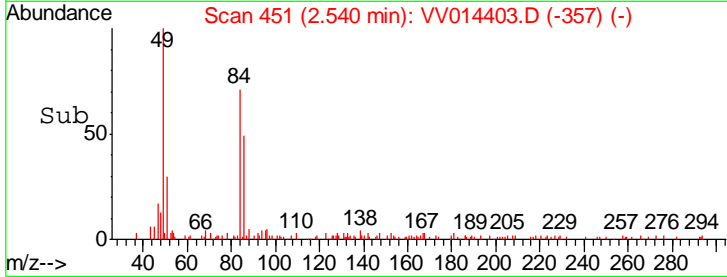
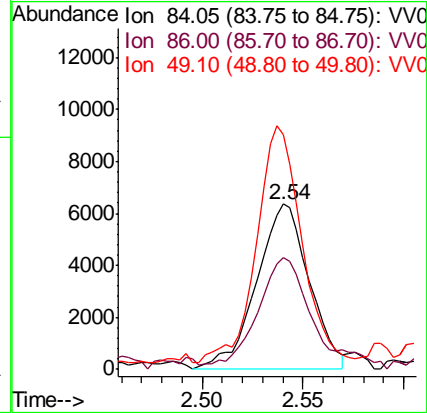
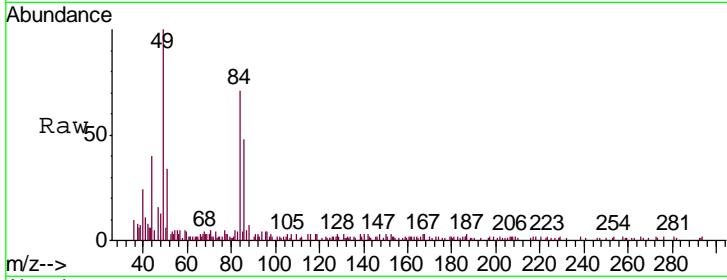




#16  
 Methylene chloride  
 Concen: 0.176 ug/L  
 RT: 2.54 min Scan# 451  
 Delta R.T. 0.00 min  
 Lab File: VV014403.D  
 Acq: 27 Jan 2020 14:15

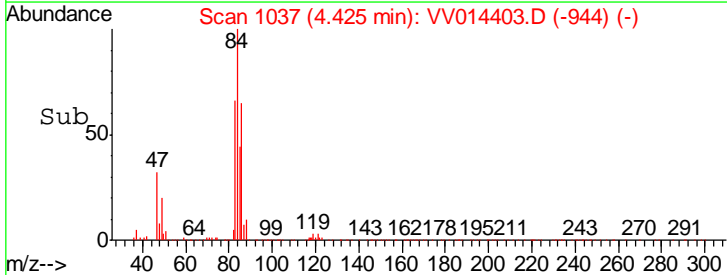
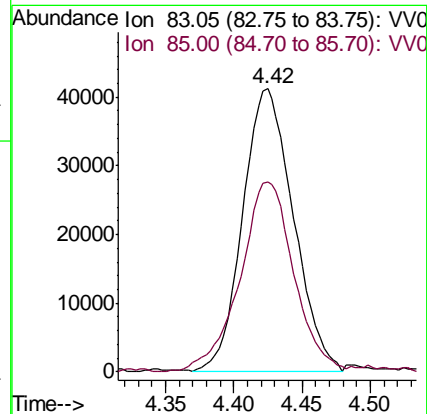
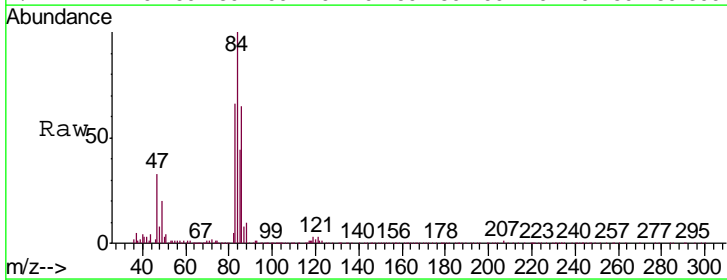
Instrument : MSVOA\_V  
 ClientSampled : H0AC4

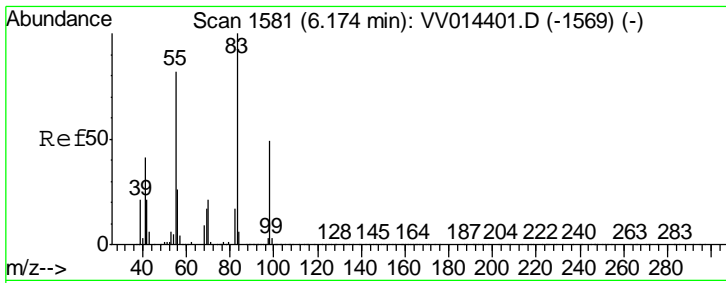
Tgt Ion	Resp	Lower	Upper
84	11575		
84	100		
86	67.5	43.1	80.1
49	141.7	82.1	152.5



#25  
 Chloroform  
 Concen: 0.935 ug/L  
 RT: 4.42 min Scan# 1037  
 Delta R.T. -0.00 min  
 Lab File: VV014403.D  
 Acq: 27 Jan 2020 14:15

Tgt Ion	Resp	Lower	Upper
83	106445		
83	100		
85	66.9	46.2	85.8

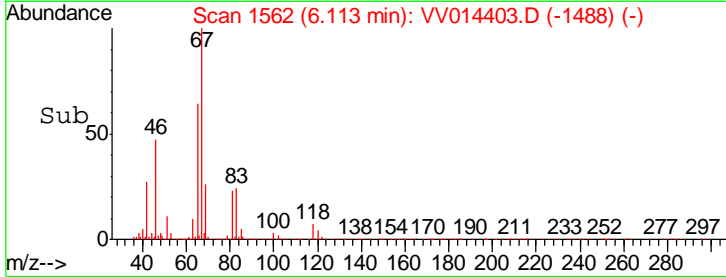
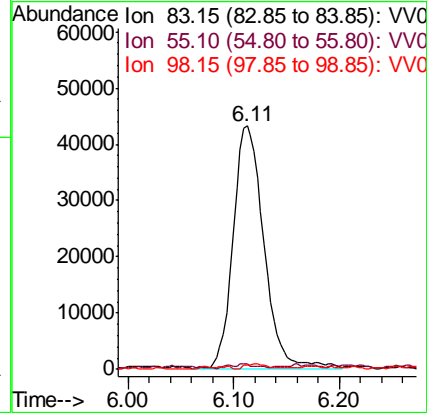
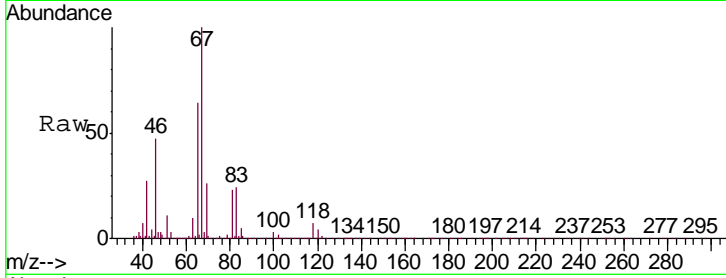




#35  
 Methylcyclohexane  
 Concen: 0.797 ug/L  
 RT: 6.11 min Scan# 1562  
 Delta R.T. -0.06 min  
 Lab File: VV014403.D  
 Acq: 27 Jan 2020 14:15

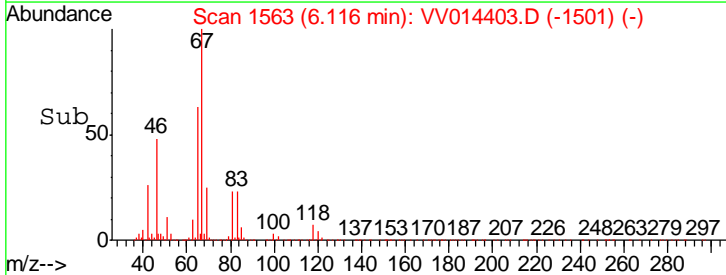
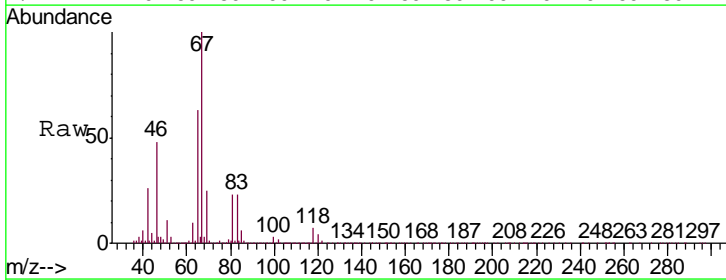
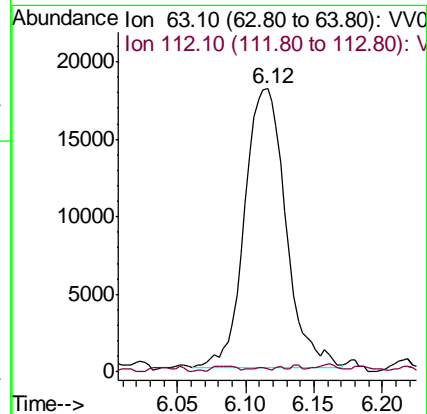
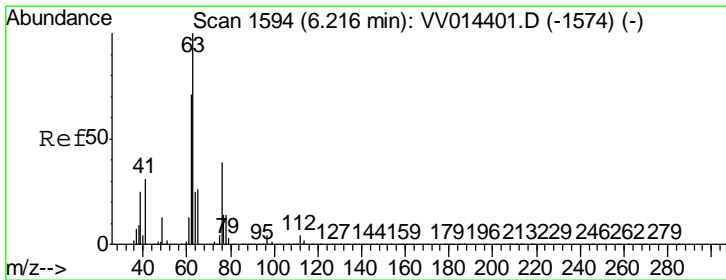
**Instrument :**  
 MSVOA\_V  
**ClientSampled :**  
 H0AC4

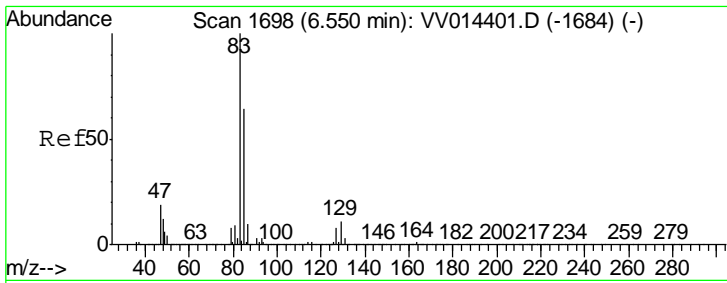
Tgt Ion	Resp	Lower	Upper
83	100		
55	1.2	61.7	92.5#
98	1.8	38.1	57.1#



#37  
 1,2-Dichloropropane  
 Concen: 0.575 ug/L  
 RT: 6.12 min Scan# 1563  
 Delta R.T. -0.10 min  
 Lab File: VV014403.D  
 Acq: 27 Jan 2020 14:15

Tgt Ion	Resp	Lower	Upper
63	100		
112	0.7	3.7	5.5#

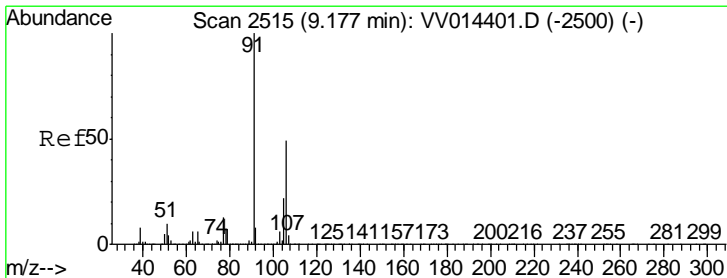
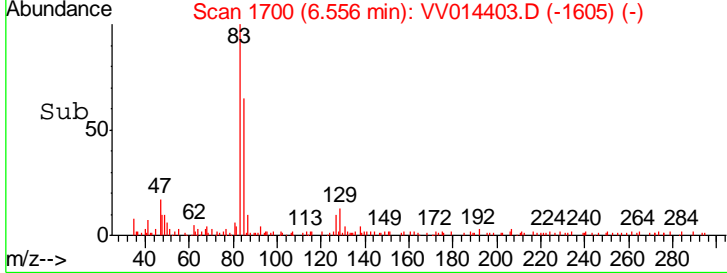
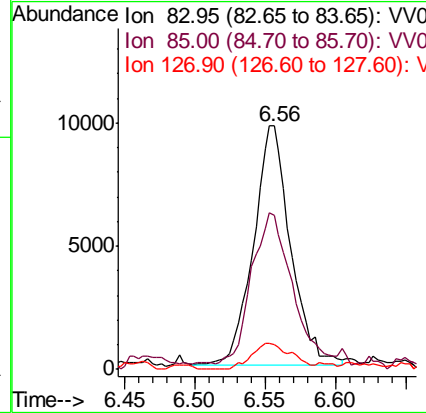
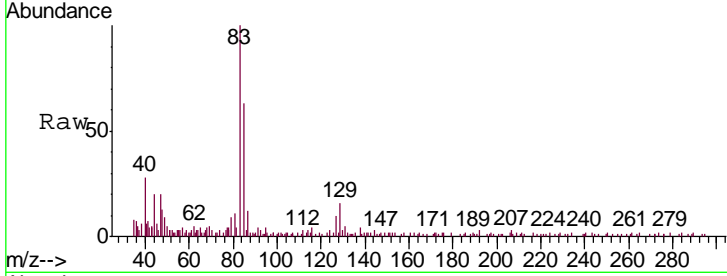




#38  
 Bromodichloromethane  
 Concen: 0.213 ug/L  
 RT: 6.56 min Scan# 1700  
 Delta R.T. 0.01 min  
 Lab File: VV014403.D  
 Acq: 27 Jan 2020 14:15

Instrument : MSVOA\_V  
 ClientSampled : H0AC4

Tgt Ion	Resp	Lower	Upper
83	17847		
85	63.2	46.4	86.2
127	10.1	6.3	9.5#



#53  
 m,p-xylene  
 Concen: 0.094 ug/L  
 RT: 9.18 min Scan# 2516  
 Delta R.T. 0.00 min  
 Lab File: VV014403.D  
 Acq: 27 Jan 2020 14:15

Tgt Ion	Resp	Lower	Upper
106	10509		
91	213.3	146.8	272.6

