

Data Path : Z:\voasrv\HPCHEM1\MSVOA_V\Data\VW012723\
 Data File : VW029975.D
 Acq On : 27 Jan 2023 13:12
 Operator : SY/MD
 Sample : 01315-09
 Misc : 25.0mL/MSVOA_V/WATER
 ALS Vial : 9 Sample Multiplier: 1

Instrument :
 MSVOA_V
 ClientSampleId :

Quant Time: Jan 28 02:24:03 2023
 Quant Method : Z:\voasrv\HPCHEM1\MSVOA_V\Method\SFAMVTR011223WMA.M
 Quant Title : TRACE VOA SFAM1.0
 QLast Update : Sat Jan 28 02:00:30 2023
 Response via : Initial Calibration

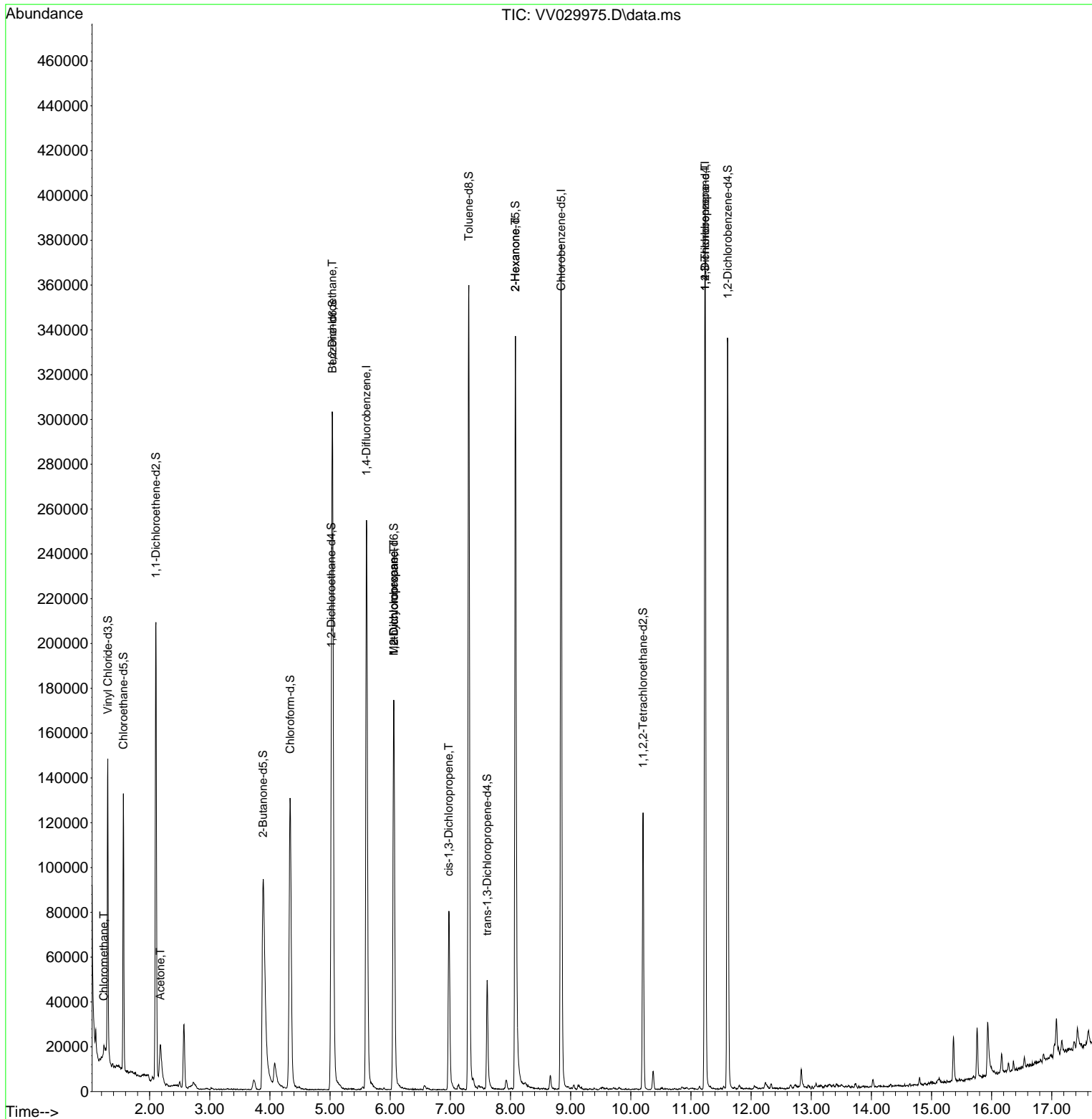
Compound	R.T.	QIon	Response	Conc	Units	Dev(Min)
Internal Standards						
1) 1,4-Difluorobenzene	5.606	114	227546	5.000	ug/L	0.00
28) Chlorobenzene-d5	8.841	117	211451	5.000	ug/L	0.00
58) 1,4-Dichlorobenzene-d4	11.236	152	106809	5.000	ug/L	0.00
System Monitoring Compounds						
4) Vinyl Chloride-d3	1.304	65	83385	4.831	ug/L	0.00
Spiked Amount	5.000	Range 40 - 130	Recovery	=	96.600%	
7) Chloroethane-d5	1.565	69	76251	5.330	ug/L	0.00
Spiked Amount	5.000	Range 65 - 130	Recovery	=	106.600%	
11) 1,1-Dichloroethene-d2	2.105	63	109654	3.485	ug/L	0.00
Spiked Amount	5.000	Range 60 - 125	Recovery	=	69.800%	
20) 2-Butanone-d5	3.886	46	147811	48.319	ug/L	0.00
Spiked Amount	50.000	Range 40 - 130	Recovery	=	96.640%	
24) Chloroform-d	4.336	84	138520	4.375	ug/L	0.00
Spiked Amount	5.000	Range 70 - 125	Recovery	=	87.600%	
26) 1,2-Dichloroethane-d4	5.021	65	61316	4.573	ug/L	0.00
Spiked Amount	5.000	Range 70 - 130	Recovery	=	91.400%	
32) Benzene-d6	5.040	84	296486	4.727	ug/L	0.00
Spiked Amount	5.000	Range 70 - 125	Recovery	=	94.600%	
36) 1,2-Dichloropropane-d6	6.060	67	93349	5.085	ug/L	0.00
Spiked Amount	5.000	Range 60 - 140	Recovery	=	101.800%	
41) Toluene-d8	7.307	98	248926	4.287	ug/L	0.00
Spiked Amount	5.000	Range 70 - 130	Recovery	=	85.800%	
43) trans-1,3-Dichloroprop...	7.613	79	29410	4.387	ug/L	0.00
Spiked Amount	5.000	Range 55 - 130	Recovery	=	87.800%	
46) 2-Hexanone-d5	8.082	63	125661	46.040	ug/L	0.00
Spiked Amount	50.000	Range 45 - 130	Recovery	=	92.080%	
56) 1,1,2,2-Tetrachloroeth...	10.204	84	62262	4.628	ug/L	0.00
Spiked Amount	5.000	Range 65 - 120	Recovery	=	92.600%	
66) 1,2-Dichlorobenzene-d4	11.612	152	88767	4.571	ug/L	0.00
Spiked Amount	5.000	Range 80 - 120	Recovery	=	91.400%	
Target Compounds						
3) Chloromethane	1.240	50	2533	0.114	ug/L #	72
13) Acetone	2.179	43	23933	10.962	ug/L	95
27) 1,2-Dichloroethane	5.037	62	1471	0.092	ug/L #	71
35) Methylcyclohexane	6.060	83	20985	0.702	ug/L #	20
37) 1,2-Dichloropropane	6.060	63	9341	0.571	ug/L #	85
39) cis-1,3-Dichloropropene	6.973	75	2012	0.092	ug/L #	49
48) 2-Hexanone	8.082	43	14762	2.956	ug/L #	59
61) 1,2,3-Trichloropropane	11.236	75	12469	1.577	ug/L #	66

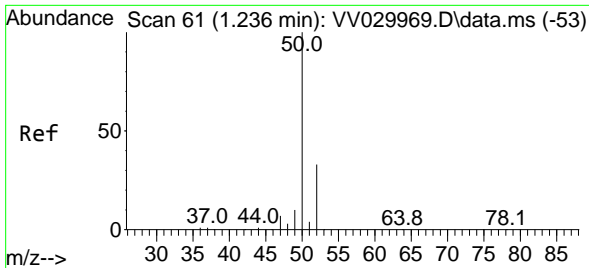
(#) = qualifier out of range (m) = manual integration (+) = signals summed

Data Path : Z:\voasrv\HPCHEM1\MSVOA_V\Data\VV012723\
 Data File : VV029975.D
 Acq On : 27 Jan 2023 13:12
 Operator : SY/MD
 Sample : 01315-09
 Misc : 25.0mL/MSVOA_V/WATER
 ALS Vial : 9 Sample Multiplier: 1

Instrument :
 MSVOA_V
 ClientSampleId :

Quant Time: Jan 28 02:24:03 2023
 Quant Method : Z:\voasrv\HPCHEM1\MSVOA_V\Method\SFAMVTR011223WMA.M
 Quant Title : TRACE VOA SFAM1.0
 QLast Update : Sat Jan 28 02:00:30 2023
 Response via : Initial Calibration

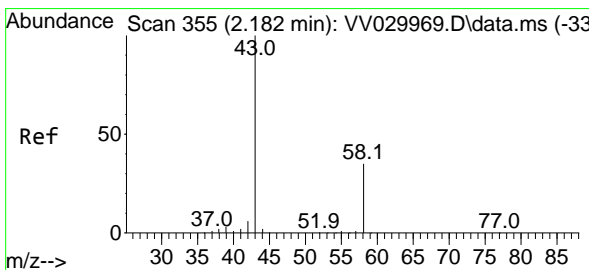
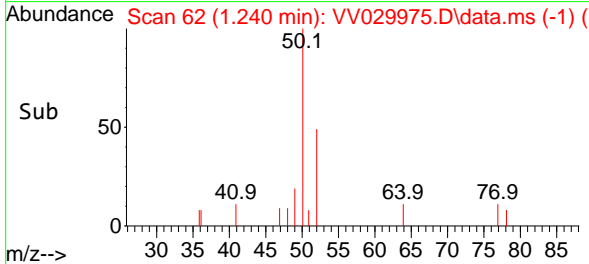
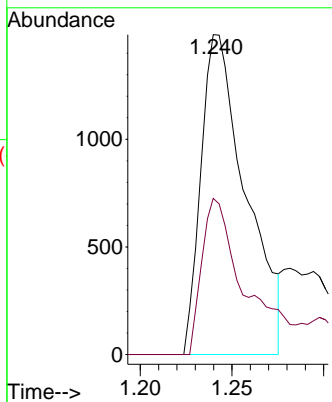
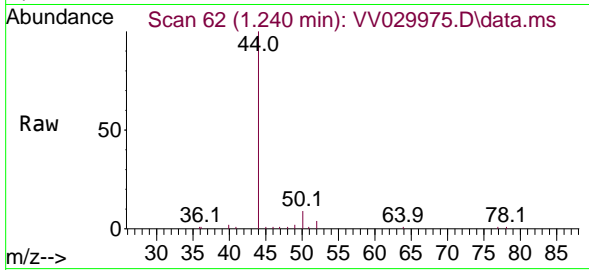




#3
 Chloromethane
 Concen: 0.114 ug/L
 RT: 1.240 min Scan# 61
 Delta R.T. 0.003 min
 Lab File: VV029975.D
 Acq: 27 Jan 2023 13:12

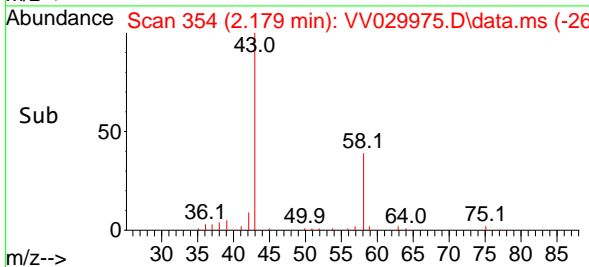
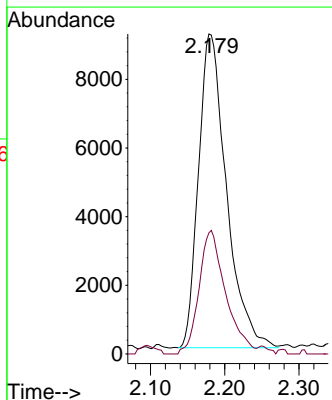
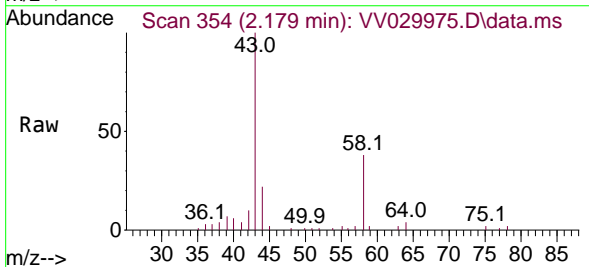
Instrument :
 MSVOA_V
 ClientSampleId :

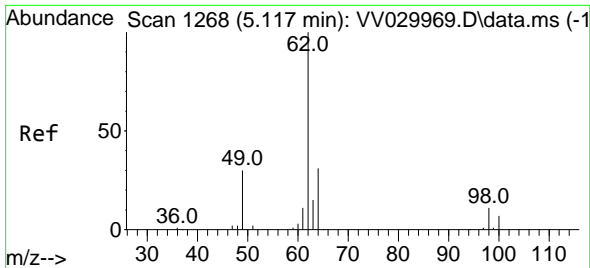
Tgt Ion: 50 Resp: 2533
 Ion Ratio Lower Upper
 50 100
 52 48.9 23.1 42.9#



#13
 Acetone
 Concen: 10.962 ug/L
 RT: 2.179 min Scan# 354
 Delta R.T. -0.003 min
 Lab File: VV029975.D
 Acq: 27 Jan 2023 13:12

Tgt Ion: 43 Resp: 23933
 Ion Ratio Lower Upper
 43 100
 58 37.4 0.0 68.8

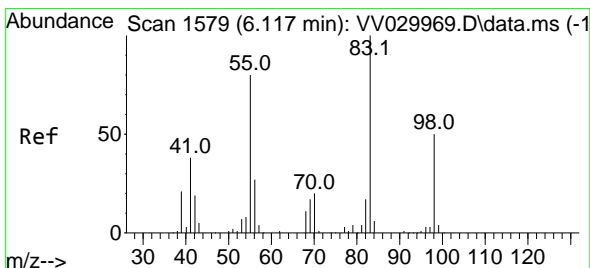
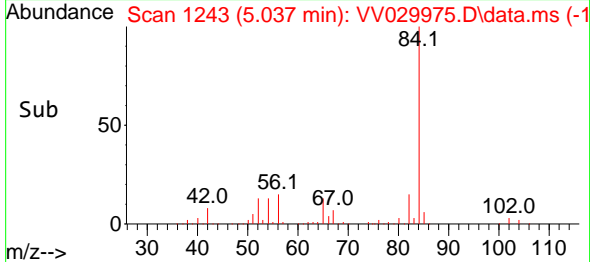
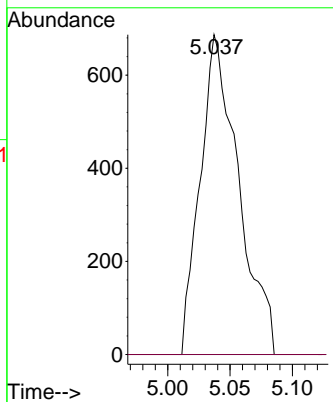
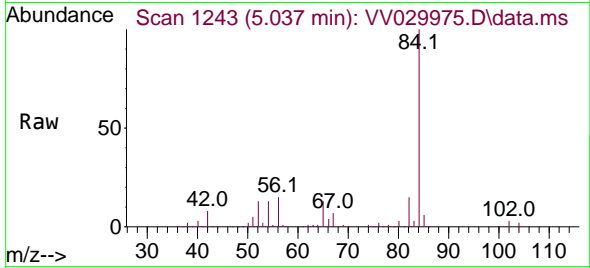




#27
 1,2-Dichloroethane
 Concen: 0.092 ug/L
 RT: 5.037 min Scan# 11
 Delta R.T. -0.080 min
 Lab File: VV029975.D
 Acq: 27 Jan 2023 13:12

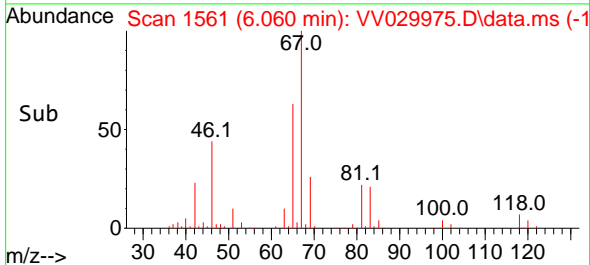
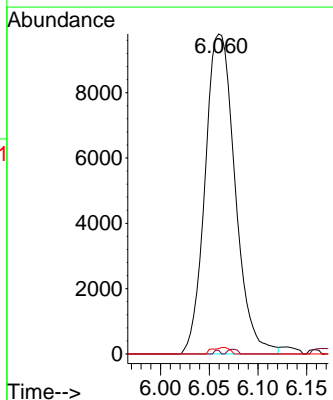
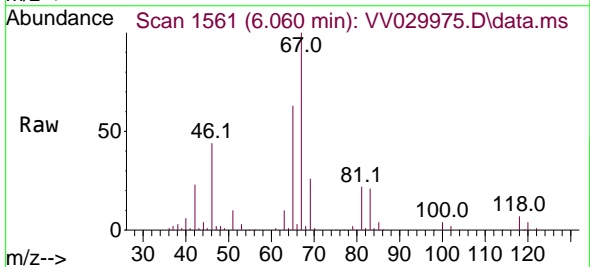
Instrument :
 MSVOA_V
 ClientSampleId :

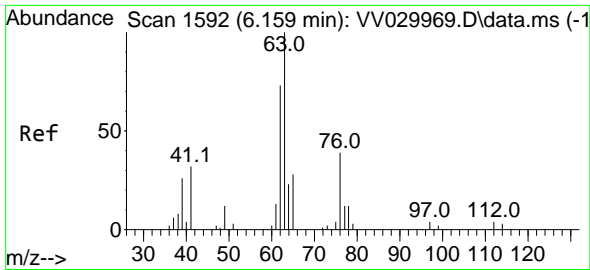
Tgt Ion: 62 Resp: 1471
 Ion Ratio Lower Upper
 62 100
 98 0.0 8.9 13.3#



#35
 Methylcyclohexane
 Concen: 0.702 ug/L
 RT: 6.060 min Scan# 1561
 Delta R.T. -0.058 min
 Lab File: VV029975.D
 Acq: 27 Jan 2023 13:12

Tgt Ion: 83 Resp: 20985
 Ion Ratio Lower Upper
 83 100
 55 0.2 57.3 85.9#
 98 0.0 39.0 58.6#

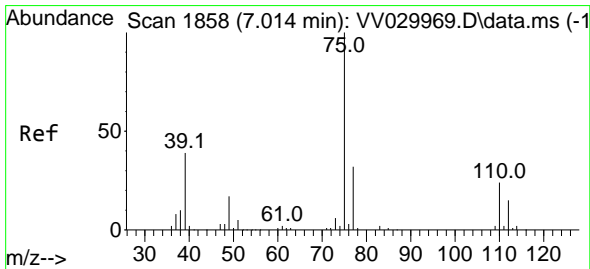
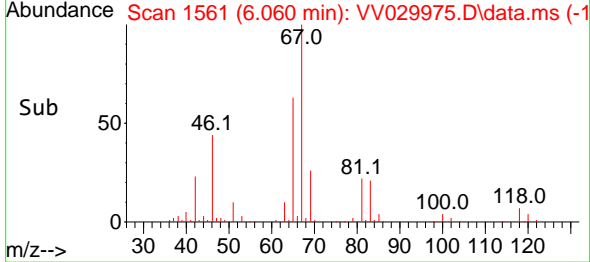
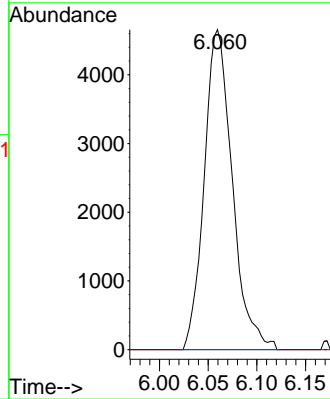
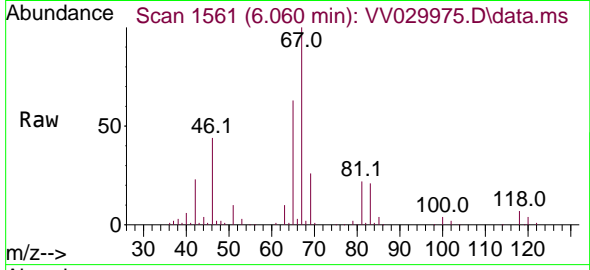




#37
 1,2-Dichloropropane
 Concen: 0.571 ug/L
 RT: 6.060 min Scan# 1111
 Delta R.T. -0.099 min
 Lab File: VV029975.D
 Acq: 27 Jan 2023 13:12

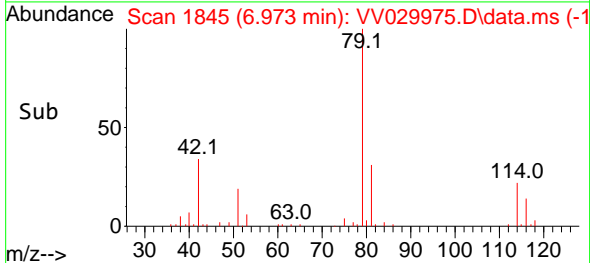
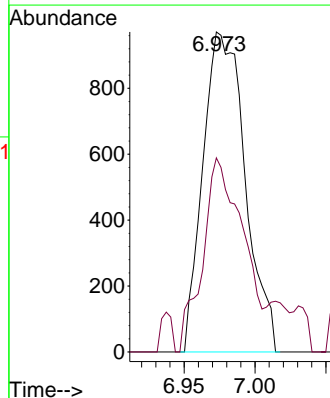
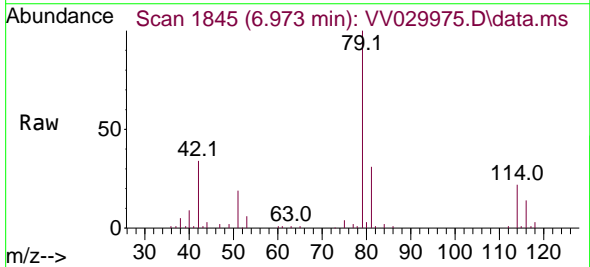
Instrument : MSVOA_V
 ClientSampleId :

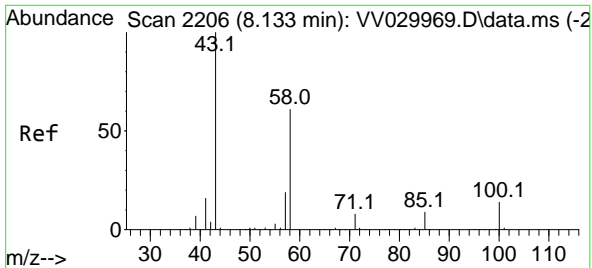
Tgt Ion: 63 Resp: 9341
 Ion Ratio Lower Upper
 63 100
 112 0.0 3.9 5.9#



#39
 cis-1,3-Dichloropropene
 Concen: 0.092 ug/L
 RT: 6.973 min Scan# 1845
 Delta R.T. -0.042 min
 Lab File: VV029975.D
 Acq: 27 Jan 2023 13:12

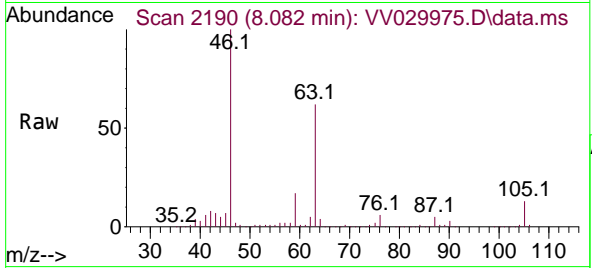
Tgt Ion: 75 Resp: 2012
 Ion Ratio Lower Upper
 75 100
 77 60.7 22.4 41.6#





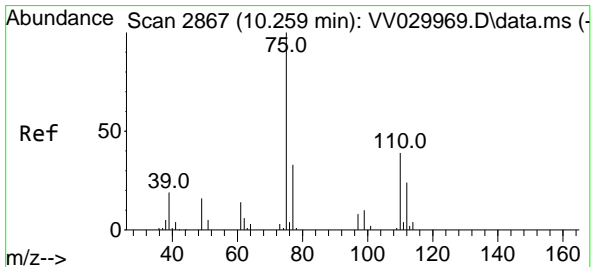
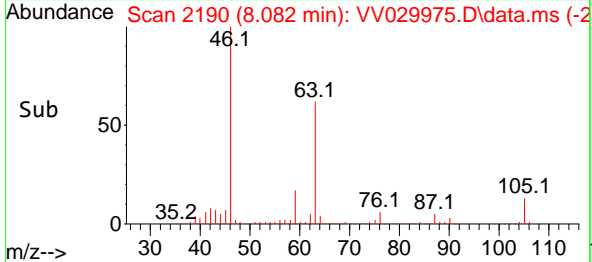
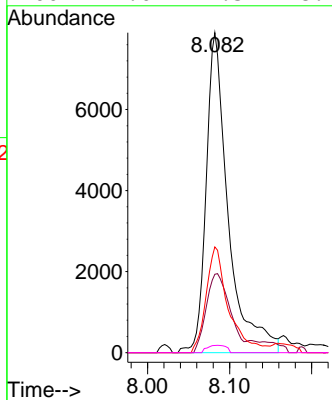
#48
 2-Hexanone
 Concen: 2.956 ug/L
 RT: 8.082 min Scan# 2190
 Delta R.T. -0.051 min
 Lab File: VV029975.D
 Acq: 27 Jan 2023 13:12

Instrument : MSVOA_V
 ClientSampleId :



Tgt Ion: 43 Resp: 14762

Ion	Ratio	Lower	Upper
43	100		
58	26.6	51.4	77.2#
57	33.6	17.0	25.6#
100	2.0	12.5	18.7#



#61
 1,2,3-Trichloropropane
 Concen: 1.577 ug/L
 RT: 11.236 min Scan# 3171
 Delta R.T. 0.978 min
 Lab File: VV029975.D
 Acq: 27 Jan 2023 13:12

Tgt Ion: 75 Resp: 12469

Ion	Ratio	Lower	Upper
75	100		
77	32.8	26.5	39.7
110	1.5	31.8	47.8#

