

Data Path : Z:\voasrv\HPCHEM1\MSVOA\_V\Data\VV012821\  
 Data File : VV020190.D  
 Acq On : 27 Jan 2021 14:28  
 Operator : SY/MD  
 Sample : VV0128WBL01  
 Misc : 5.0mL/MSVOA\_V/WATER  
 ALS Vial : 1 Sample Multiplier: 1

Instrument :  
 MSVOA\_V  
 ClientSampleId :  
 VBLK89

Integration Parameters: LSCINT.P

Integrator: RTE  
 Smoothing : OFF Filtering: 5  
 Sampling : 1 Min Area: 0 % of largest Peak  
 Start Thrs: 0.2 Max Peaks: 100  
 Stop Thrs : 0 Peak Location: TOP

If leading or trailing edge < 100 prefer < Baseline drop else tangent >  
 Peak separation: 5

Method : Z:\voasrv\HPCHEM1\MSVOA\_V\Method\SOMVLM012821WMA.M  
 Title : VOC Analysis

Signal : TIC: VV020190.D\data.ms

peak #	R.T. min	first scan	max scan	last scan	PK TY	peak height	corr. area	corr. % max.	% of total
1	1.306	61	67	83	rVB	538553	561348	15.39%	1.975%
2	1.569	142	149	159	rVB	453729	496537	13.61%	1.747%
3	2.110	306	317	344	rVB	694311	1040089	28.51%	3.659%
4	2.299	366	376	387	rVB	5257	8372	0.23%	0.029%
5	2.373	393	399	404	rBV6	702	733	0.02%	0.003%
6	2.473	426	430	434	rBV5	636	649	0.02%	0.002%
7	2.515	435	443	452	rVB7	3463	6322	0.17%	0.022%
8	2.608	466	472	481	rBV6	1083	1514	0.04%	0.005%
9	2.766	515	521	524	rBV4	1990	2222	0.06%	0.008%
10	2.852	544	548	550	rBV3	1085	758	0.02%	0.003%
11	2.949	574	578	581	rBV4	795	555	0.02%	0.002%
12	2.984	584	589	591	rVB6	968	841	0.02%	0.003%
13	3.045	605	608	615	rVB6	1082	1121	0.03%	0.004%
14	3.190	648	653	658	rBV7	932	955	0.03%	0.003%
15	3.216	658	661	664	rBV4	1011	592	0.02%	0.002%
16	3.251	669	672	676	rVV4	838	664	0.02%	0.002%
17	3.274	676	679	682	rVB5	847	575	0.02%	0.002%
18	3.399	715	718	722	rBV3	1012	726	0.02%	0.003%
19	3.438	728	730	734	rVB4	1084	636	0.02%	0.002%
20	3.483	739	744	747	rVB4	1182	1092	0.03%	0.004%
21	3.563	765	769	771	rBV4	998	632	0.02%	0.002%
22	3.608	780	783	792	rBV7	1100	1118	0.03%	0.004%
23	3.698	807	811	815	rBV6	1162	1110	0.03%	0.004%
24	3.749	824	827	831	rVB4	1025	840	0.02%	0.003%
25	3.843	854	856	859	rBV3	869	663	0.02%	0.002%
26	3.894	859	872	919	rVV	251752	810608	22.22%	2.852%
27	4.354	998	1015	1047	rBV	581965	1427449	39.13%	5.021%
28	4.933	1192	1195	1198	rBV5	581	537	0.01%	0.002%
29	5.052	1211	1232	1267	rBV2	1423988	3647888	100.00%	12.832%
30	5.364	1325	1329	1332	rVB6	1088	1030	0.03%	0.004%
31	5.389	1332	1337	1340	rBV7	1636	1472	0.04%	0.005%
32	5.412	1340	1344	1345	rBV3	869	561	0.02%	0.002%
33	5.460	1357	1359	1361	rBV2	898	534	0.01%	0.002%
34	5.547	1384	1386	1388	rBV4	956	534	0.01%	0.002%
35	5.621	1395	1409	1449	rBV	1123309	2235370	61.28%	7.863%
36	5.913	1487	1500	1516	rBV7	15711	37052	1.02%	0.130%

Data Path : Z:\voasrv\HPCHEM1\MSVOA\_V\Data\VV012821\  
 Data File : VV020190.D  
 Acq On : 27 Jan 2021 14:28  
 Operator : SY/MD  
 Sample : VV0128WBL01  
 Misc : 5.0mL/MSVOA\_V/WATER  
 ALS Vial : 1 Sample Multiplier: 1

Instrument :  
 MSVOA\_V  
 ClientSampleId :  
 VBLK89

Integration Parameters: LSCINT.P

Integrator: RTE  
 Smoothing : OFF Filtering: 5  
 Sampling : 1 Min Area: 0 % of largest Peak  
 Start Thrs: 0.2 Max Peaks: 100  
 Stop Thrs : 0 Peak Location: TOP

If leading or trailing edge < 100 prefer < Baseline drop else tangent >  
 Peak separation: 5

Method : Z:\voasrv\HPCHEM1\MSVOA\_V\Method\SOMVLM012821WMA.M  
 Title : VOC Analysis

37	6.074	1535	1550	1576	rBV	807499	1631409	44.72%	5.739%
38	6.322	1624	1627	1632	rBV6	1295	1296	0.04%	0.005%
39	6.405	1650	1653	1655	rBV3	1001	629	0.02%	0.002%
40	6.505	1680	1684	1690	rBV7	1223	1468	0.04%	0.005%
41	6.566	1701	1703	1707	rVV5	862	596	0.02%	0.002%
42	6.637	1718	1725	1726	rBV4	2357	2460	0.07%	0.009%
43	6.688	1739	1741	1745	rVB5	1454	952	0.03%	0.003%
44	6.724	1750	1752	1755	rVB2	1140	536	0.01%	0.002%
45	6.807	1773	1778	1780	rBV6	1115	997	0.03%	0.004%
46	6.820	1780	1782	1785	rVB4	1193	712	0.02%	0.003%
47	6.990	1818	1835	1867	rBV	457823	838638	22.99%	2.950%
48	7.318	1925	1937	1964	rBV	1730030	2985255	81.84%	10.501%
49	7.624	2021	2032	2064	rBV	323594	572974	15.71%	2.016%
50	7.852	2100	2103	2107	rBV4	1431	1072	0.03%	0.004%
51	7.926	2124	2126	2129	rBV3	905	616	0.02%	0.002%
52	7.968	2136	2139	2140	rBV2	2553	1269	0.03%	0.004%
53	8.093	2165	2178	2208	rBV	979990	1686628	46.24%	5.933%
54	8.363	2259	2262	2265	rBV6	1513	926	0.03%	0.003%
55	8.421	2276	2280	2283	rBV5	1721	1538	0.04%	0.005%
56	8.479	2295	2298	2301	rVB4	1451	870	0.02%	0.003%
57	8.527	2309	2313	2315	rVV3	1189	835	0.02%	0.003%
58	8.566	2323	2325	2329	rBV5	962	546	0.01%	0.002%
59	8.617	2338	2341	2344	rVB4	1057	684	0.02%	0.002%
60	8.672	2355	2358	2362	rBV6	791	716	0.02%	0.003%
61	8.855	2402	2415	2444	rVV	1689997	2750192	75.39%	9.675%
62	9.132	2498	2501	2502	rBV3	1692	852	0.02%	0.003%
63	9.151	2502	2507	2513	rVV7	3160	4791	0.13%	0.017%
64	9.225	2526	2530	2531	rBV4	929	695	0.02%	0.002%
65	9.360	2569	2572	2573	rBV3	1144	581	0.02%	0.002%
66	9.495	2612	2614	2619	rVB5	703	621	0.02%	0.002%
67	9.547	2626	2630	2631	rBV3	1424	944	0.03%	0.003%
68	9.572	2636	2638	2642	rVV4	940	665	0.02%	0.002%
69	9.939	2748	2752	2759	rBV6	3153	3486	0.10%	0.012%
70	10.032	2777	2781	2782	rBV3	695	558	0.02%	0.002%
71	10.222	2828	2840	2863	rBV	1132901	1751116	48.00%	6.160%
72	10.379	2885	2889	2892	rBV4	1206	871	0.02%	0.003%
73	10.437	2902	2907	2913	rBV5	1137	1124	0.03%	0.004%
74	10.498	2922	2926	2933	rBV6	1083	1361	0.04%	0.005%
75	10.550	2936	2942	2947	rBV6	4498	5542	0.15%	0.019%
76	10.653	2971	2974	2976	rVB3	1125	581	0.02%	0.002%

Data Path : Z:\voasrv\HPCHEM1\MSVOA\_V\Data\VV012821\  
 Data File : VV020190.D  
 Acq On : 27 Jan 2021 14:28  
 Operator : SY/MD  
 Sample : VV0128WBL01  
 Misc : 5.0mL/MSVOA\_V/WATER  
 ALS Vial : 1 Sample Multiplier: 1

Instrument :  
 MSVOA\_V  
 ClientSampleId :  
 VBLK89

Integration Parameters: LSCINT.P

Integrator: RTE  
 Smoothing : OFF Filtering: 5  
 Sampling : 1 Min Area: 0 % of largest Peak  
 Start Thrs: 0.2 Max Peaks: 100  
 Stop Thrs : 0 Peak Location: TOP

If leading or trailing edge < 100 prefer < Baseline drop else tangent >  
 Peak separation: 5

Method : Z:\voasrv\HPCHEM1\MSVOA\_V\Method\SOMVLM012821WMA.M  
 Title : VOC Analysis

77	10.685	2982	2984	2987	rVB3	1130	546	0.01%	0.002%
78	10.823	3025	3027	3031	rVB4	1233	553	0.02%	0.002%
79	10.849	3032	3035	3036	rBV3	1666	951	0.03%	0.003%
80	10.929	3048	3060	3068	rBV9	4317	7583	0.21%	0.027%
81	11.051	3092	3098	3099	rVB4	747	596	0.02%	0.002%
82	11.196	3130	3143	3149	rBV10	6881	12570	0.34%	0.044%
83	11.254	3149	3161	3187	rBV	1852970	2859898	78.40%	10.060%
84	11.479	3228	3231	3232	rBV2	966	589	0.02%	0.002%
85	11.630	3264	3278	3303	rBV	1880782	2910394	79.78%	10.238%
86	11.884	3355	3357	3364	rVB3	1099	810	0.02%	0.003%
87	11.971	3380	3384	3390	rBV6	702	606	0.02%	0.002%
88	12.235	3462	3466	3469	rBV3	828	634	0.02%	0.002%
89	12.273	3475	3478	3483	rVB4	637	573	0.02%	0.002%
90	12.656	3590	3597	3610	rBV3	10744	17137	0.47%	0.060%
91	12.711	3610	3614	3615	rBV4	702	530	0.01%	0.002%
92	12.746	3622	3625	3626	rBV2	1186	613	0.02%	0.002%
93	12.932	3681	3683	3687	rBV2	1017	611	0.02%	0.002%
94	13.058	3719	3722	3724	rBV2	1443	933	0.03%	0.003%
95	13.273	3779	3789	3804	rBV5	13109	21774	0.60%	0.077%
96	13.521	3857	3866	3873	rBV	9596	15491	0.42%	0.054%
97	13.755	3932	3939	3952	rVB7	11913	19637	0.54%	0.069%
98	14.376	4128	4132	4138	rBV6	962	1129	0.03%	0.004%
99	14.508	4167	4173	4174	rBV5	926	1058	0.03%	0.004%
100	14.546	4183	4185	4188	rBV3	1074	655	0.02%	0.002%

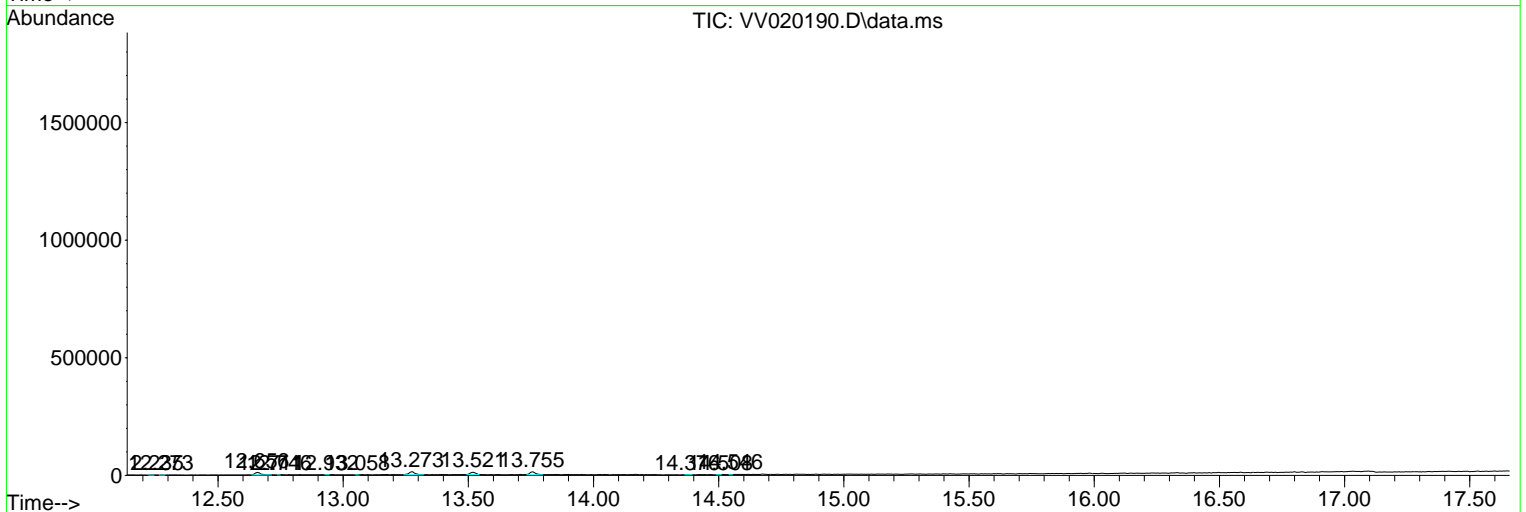
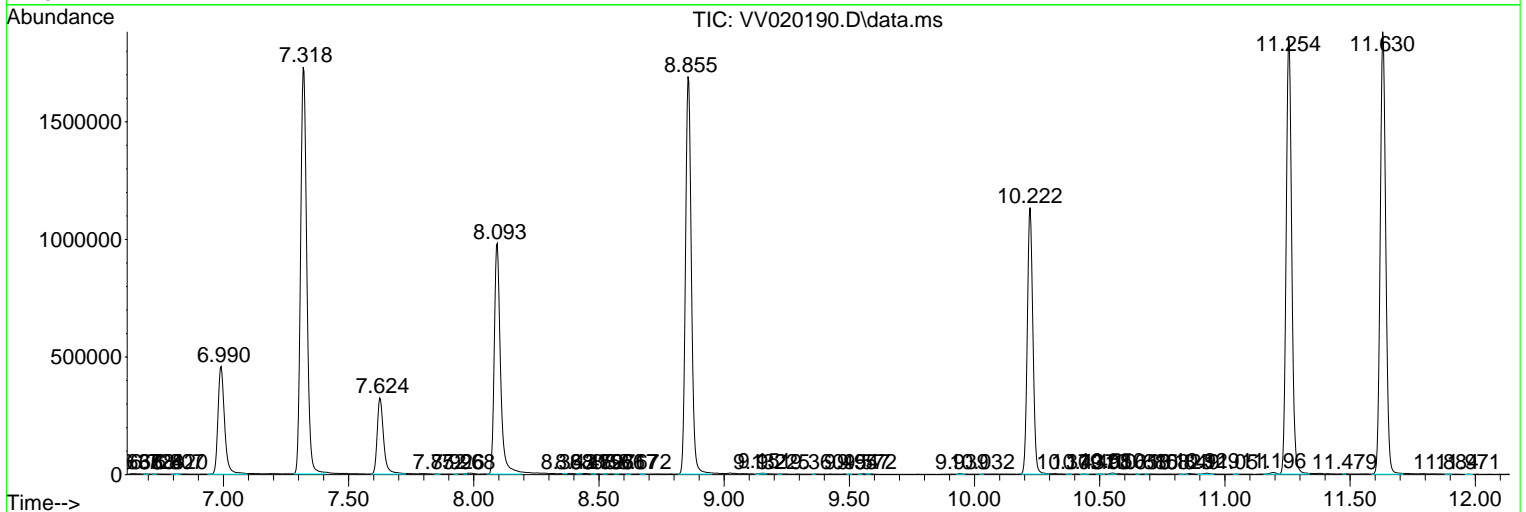
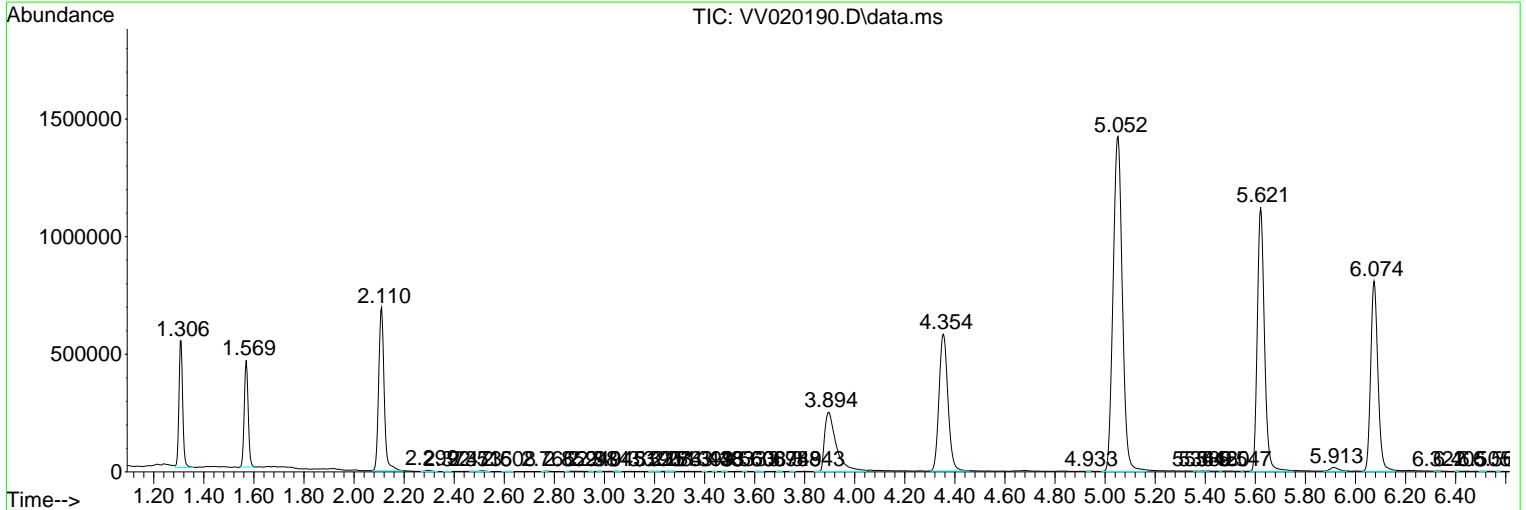
Sum of corrected areas: 28427172

Data Path : Z:\voasrv\HPCHEM1\MSVOA\_V\Data\VV012821\  
 Data File : VV020190.D  
 Acq On : 27 Jan 2021 14:28  
 Operator : SY/MD  
 Sample : VV0128WBL01  
 Misc : 5.0mL/MSVOA\_V/WATER  
 ALS Vial : 1 Sample Multiplier: 1

Instrument :  
 MSVOA\_V  
 ClientSampled :  
 VBLK89

Quant Method : Z:\voasrv\HPCHEM1\MSVOA\_V\Method\SOMVLM012821WMA.M  
 Quant Title : VOC Analysis

TIC Library : C:\DATABASE\NIST11.L  
 TIC Integration Parameters: LSCINT.P



Data Path : Z:\voasrv\HPCHEM1\MSVOA\_V\Data\VV012821\  
Data File : VV020190.D  
Acq On : 27 Jan 2021 14:28  
Operator : SY/MD  
Sample : VV0128WBL01  
Misc : 5.0mL/MSVOA\_V/WATER  
ALS Vial : 1 Sample Multiplier: 1

**Instrument :**  
MSVOA\_V  
**ClientSampled :**  
VBLK89

Quant Method : Z:\voasrv\HPCHEM1\MSVOA\_V\Method\SOMVLM012821WMA.M  
Quant Title : VOC Analysis

TIC Library : C:\DATABASE\NIST11.L  
TIC Integration Parameters: LSCINT.P

No Library Search Compounds Detected

\*\*\*\*\*

Data Path : Z:\voasrv\HPCHEM1\MSVOA\_V\Data\VV012821\  
Data File : VV020190.D  
Acq On : 27 Jan 2021 14:28  
Operator : SY/MD  
Sample : VV0128WBL01  
Misc : 5.0mL/MSVOA\_V/WATER  
ALS Vial : 1 Sample Multiplier: 1

Instrument :  
MSVOA\_V  
ClientSampled :  
VBLK89

Quant Method : Z:\voasrv\HPCHEM1\MSVOA\_V\Method\SOMVLM012821WMA.M  
Quant Title : VOC Analysis

TIC Library : C:\DATABASE\NIST11.L  
TIC Integration Parameters: LSCINT.P

TIC Top Hit name	RT	EstConc	Units	Response	--Internal Standard--		
					#	RT	Resp Conc

---