

Data Path : Z:\voasrv\HPCHEM1\MSVOA_V\Data\VV012821\
 Data File : VV020196.D
 Acq On : 27 Jan 2021 16:56
 Operator : SY/MD
 Sample : VIBLK
 Misc : 5.0mL/MSVOA_V/WATER
 ALS Vial : 1 Sample Multiplier: 1

Instrument :
 MSVOA_V
 ClientSampleId :
 VIBLK

Integration Parameters: LSCINT.P

Integrator: RTE
 Smoothing : OFF
 Sampling : 1
 Start Thrs : 0.2
 Stop Thrs : 0

Filtering: 5
 Min Area: 0 % of largest Peak
 Max Peaks: 100
 Peak Location: TOP

If leading or trailing edge < 100 prefer < Baseline drop else tangent >
 Peak separation: 5

Method : Z:\voasrv\HPCHEM1\MSVOA_V\Method\SOMVLM012821WMA.M
 Title : VOC Analysis

Signal : TIC: VV020196.D\data.ms

peak #	R.T. min	first scan	max scan	last scan	PK TY	peak height	corr. area	corr. % max.	% of total
1	1.309	61	68	84	rVB	460408	471334	14.20%	1.834%
2	1.569	142	149	163	rVB	382045	420900	12.68%	1.637%
3	2.110	306	317	339	rBV	656074	984596	29.67%	3.830%
4	2.293	371	374	376	rBV4	1749	1239	0.04%	0.005%
5	2.579	461	463	466	rBV3	932	561	0.02%	0.002%
6	2.740	511	513	515	rBV	897	534	0.02%	0.002%
7	2.852	546	548	551	rBV2	778	524	0.02%	0.002%
8	2.907	563	565	570	rBV5	792	714	0.02%	0.003%
9	3.013	595	598	600	rBV4	732	390	0.01%	0.002%
10	3.158	640	643	646	rBV4	876	712	0.02%	0.003%
11	3.238	665	668	672	rVB4	1494	795	0.02%	0.003%
12	3.344	697	701	705	rBV4	924	777	0.02%	0.003%
13	3.389	712	715	718	rBV4	624	439	0.01%	0.002%
14	3.447	731	733	737	rVB5	963	608	0.02%	0.002%
15	3.515	752	754	756	rBV2	920	466	0.01%	0.002%
16	3.589	775	777	780	rBV3	763	396	0.01%	0.002%
17	3.746	823	826	828	rBV2	821	596	0.02%	0.002%
18	3.785	834	838	840	rBV4	962	775	0.02%	0.003%
19	3.891	860	871	917	rVV	231843	705634	21.26%	2.745%
20	4.354	998	1015	1042	rBV	531004	1307840	39.41%	5.088%
21	4.666	1110	1112	1116	rBV4	914	742	0.02%	0.003%
22	4.965	1202	1205	1206	rBV3	664	384	0.01%	0.001%
23	5.052	1214	1232	1269	rBV2	1285696	3318669	100.00%	12.911%
24	5.322	1314	1316	1318	rBV2	1192	502	0.02%	0.002%
25	5.335	1318	1320	1323	rVV4	1240	659	0.02%	0.003%
26	5.412	1342	1344	1349	rVB5	1171	719	0.02%	0.003%
27	5.434	1349	1351	1354	rBV4	1008	521	0.02%	0.002%
28	5.540	1382	1384	1387	rVB4	1349	672	0.02%	0.003%
29	5.621	1396	1409	1441	rBV	1176047	2336692	70.41%	9.091%
30	5.913	1492	1500	1513	rVB4	14113	26857	0.81%	0.104%
31	6.013	1529	1531	1534	rVB3	1012	520	0.02%	0.002%
32	6.074	1534	1550	1583	rBV	739168	1498815	45.16%	5.831%
33	6.312	1621	1624	1627	rVV3	672	422	0.01%	0.002%
34	6.331	1627	1630	1637	rVB6	1168	1239	0.04%	0.005%
35	6.392	1646	1649	1651	rBV3	653	406	0.01%	0.002%
36	6.466	1669	1672	1676	rVV4	707	566	0.02%	0.002%

Data Path : Z:\voasrv\HPCHEM1\MSVOA_V\Data\VW012821\
 Data File : VW020196.D
 Acq On : 27 Jan 2021 16:56
 Operator : SY/MD
 Sample : VIBLK
 Misc : 5.0mL/MSVOA_V/WATER
 ALS Vial : 1 Sample Multiplier: 1

Instrument :
 MSVOA_V
 ClientSampleId :
 VIBLK

Integration Parameters: LSCINT.P

Integrator: RTE
 Smoothing : OFF
 Sampling : 1
 Start Thrs : 0.2
 Stop Thrs : 0

Filtering: 5
 Min Area: 0 % of largest Peak
 Max Peaks: 100
 Peak Location: TOP

If leading or trailing edge < 100 prefer < Baseline drop else tangent >
 Peak separation: 5

Method : Z:\voasrv\HPCHEM1\MSVOA_V\Method\SOMVLM012821WMA.M
 Title : VOC Analysis

37	6.521	1685	1689	1696	rVB4	1295	1558	0.05%	0.006%
38	6.592	1707	1711	1716	rBV3	551	480	0.01%	0.002%
39	6.637	1720	1725	1727	rBV2	605	449	0.01%	0.002%
40	6.711	1746	1748	1753	rVB2	612	362	0.01%	0.001%
41	6.990	1822	1835	1864	rBV	327700	589246	17.76%	2.292%
42	7.167	1886	1890	1892	rBV3	855	688	0.02%	0.003%
43	7.199	1898	1900	1903	rVB4	685	369	0.01%	0.001%
44	7.273	1920	1923	1925	rVV2	752	392	0.01%	0.002%
45	7.322	1925	1938	1970	rBV	1323647	2324438	70.04%	9.043%
46	7.624	2021	2032	2054	rBV	238471	418090	12.60%	1.627%
47	7.785	2080	2082	2086	rVB4	1086	695	0.02%	0.003%
48	7.801	2086	2087	2090	rVB2	1018	448	0.01%	0.002%
49	7.945	2125	2132	2137	rVV7	1065	1766	0.05%	0.007%
50	8.093	2166	2178	2209	rBV	748727	1326151	39.96%	5.159%
51	8.421	2274	2280	2287	rBV8	1435	2577	0.08%	0.010%
52	8.527	2308	2313	2315	rBV3	1013	607	0.02%	0.002%
53	8.543	2316	2318	2320	rBV2	814	365	0.01%	0.001%
54	8.723	2371	2374	2378	rVV4	890	785	0.02%	0.003%
55	8.746	2378	2381	2384	rVB2	645	507	0.02%	0.002%
56	8.855	2403	2415	2449	rBV	1639091	2643150	79.64%	10.283%
57	9.148	2503	2506	2508	rBV3	1028	710	0.02%	0.003%
58	9.244	2535	2536	2540	rBV2	597	385	0.01%	0.001%
59	9.299	2549	2553	2559	rVB4	720	783	0.02%	0.003%
60	9.341	2565	2566	2569	rBV2	663	367	0.01%	0.001%
61	9.376	2574	2577	2581	rVB3	682	462	0.01%	0.002%
62	9.457	2596	2602	2603	rBV2	583	473	0.01%	0.002%
63	9.540	2621	2628	2629	rBV4	999	967	0.03%	0.004%
64	9.659	2662	2665	2668	rVB	818	490	0.01%	0.002%
65	9.781	2701	2703	2706	rVB2	684	390	0.01%	0.002%
66	9.894	2735	2738	2745	rBV2	504	582	0.02%	0.002%
67	9.936	2745	2751	2757	rVV6	1392	1506	0.05%	0.006%
68	10.222	2828	2840	2856	rBV	1039687	1609475	48.50%	6.261%
69	10.325	2870	2872	2876	rBV3	1066	756	0.02%	0.003%
70	10.415	2898	2900	2902	rBV2	961	443	0.01%	0.002%
71	10.550	2940	2942	2944	rBV3	1569	901	0.03%	0.004%
72	10.643	2968	2971	2974	rBV3	1436	1224	0.04%	0.005%
73	10.691	2982	2986	2994	rVB9	1193	1637	0.05%	0.006%
74	10.723	2994	2996	2999	rBV3	595	364	0.01%	0.001%
75	10.797	3013	3019	3023	rBV6	1670	2312	0.07%	0.009%
76	10.923	3053	3058	3062	rBV5	1746	1955	0.06%	0.008%

Data Path : Z:\voasrv\HPCHEM1\MSVOA_V\Data\VW012821\
 Data File : VW020196.D
 Acq On : 27 Jan 2021 16:56
 Operator : SY/MD
 Sample : VIBLK
 Misc : 5.0mL/MSVOA_V/WATER
 ALS Vial : 1 Sample Multiplier: 1

Instrument :
 MSVOA_V
 ClientSampleId :
 VIBLK

Integration Parameters: LSCINT.P

Integrator: RTE
 Smoothing : OFF Filtering: 5
 Sampling : 1 Min Area: 0 % of largest Peak
 Start Thrs: 0.2 Max Peaks: 100
 Stop Thrs : 0 Peak Location: TOP

If leading or trailing edge < 100 prefer < Baseline drop else tangent >
 Peak separation: 5

Method : Z:\voasrv\HPCHEM1\MSVOA_V\Method\SOMVLM012821WMA.M
 Title : VOC Analysis

77	11.051	3094	3098	3101	rVB5	1445	1203	0.04%	0.005%
78	11.071	3101	3104	3107	rBV3	1700	1319	0.04%	0.005%
79	11.257	3149	3162	3184	rBV	1934036	2959478	89.18%	11.513%
80	11.489	3232	3234	3236	rVB3	1017	380	0.01%	0.001%
81	11.524	3243	3245	3248	rBV3	951	493	0.01%	0.002%
82	11.582	3261	3263	3265	rBV2	739	371	0.01%	0.001%
83	11.630	3266	3278	3298	rBV	1716337	2686606	80.95%	10.452%
84	12.006	3394	3395	3399	rVB2	1638	557	0.02%	0.002%
85	12.080	3415	3418	3420	rBV3	1265	796	0.02%	0.003%
86	12.173	3445	3447	3452	rVB4	1476	930	0.03%	0.004%
87	12.215	3458	3460	3462	rBV2	706	366	0.01%	0.001%
88	12.260	3472	3474	3476	rBV3	902	483	0.01%	0.002%
89	12.389	3511	3514	3516	rBV3	1140	719	0.02%	0.003%
90	12.511	3550	3552	3555	rBV2	1056	540	0.02%	0.002%
91	12.659	3594	3598	3609	rVB9	2713	3757	0.11%	0.015%
92	12.717	3613	3616	3617	rBV2	866	546	0.02%	0.002%
93	13.161	3751	3754	3760	rBV5	769	668	0.02%	0.003%
94	13.186	3760	3762	3766	rVV4	839	375	0.01%	0.001%
95	13.273	3782	3789	3801	rVB9	4118	7623	0.23%	0.030%
96	13.395	3824	3827	3829	rBV2	1525	783	0.02%	0.003%
97	13.517	3861	3865	3866	rBV4	2634	1847	0.06%	0.007%
98	13.759	3932	3940	3948	rBV6	2300	3904	0.12%	0.015%
99	14.038	4020	4027	4031	rBV9	1875	2775	0.08%	0.011%
100	14.254	4092	4094	4096	rBV2	1245	542	0.02%	0.002%

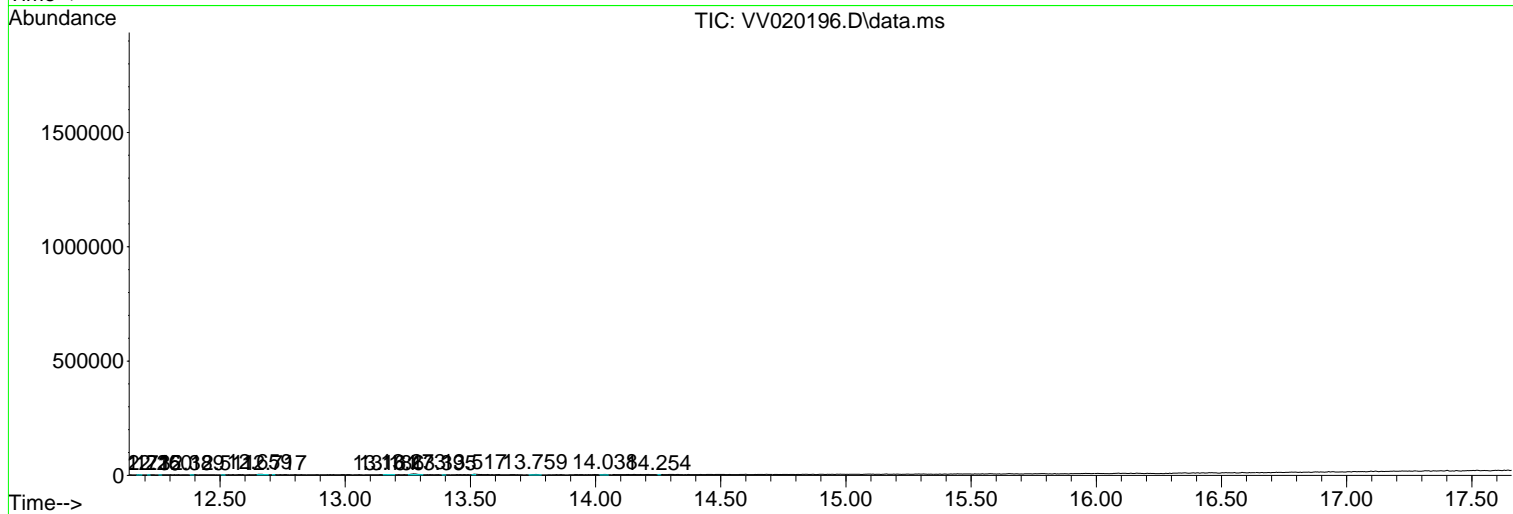
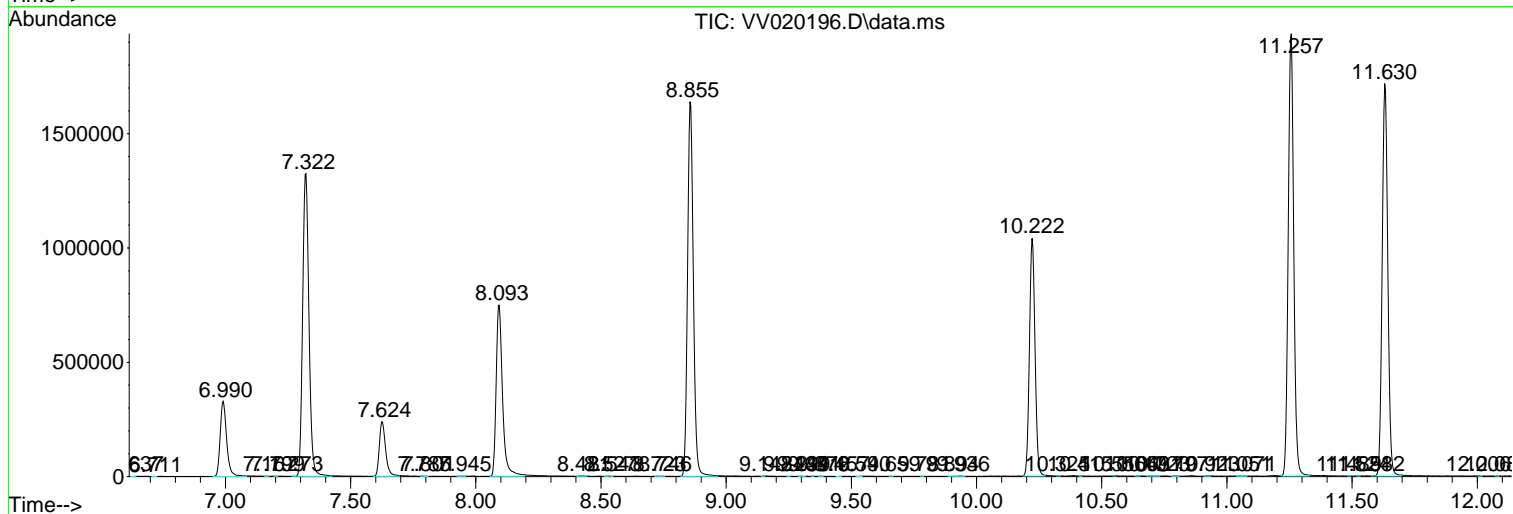
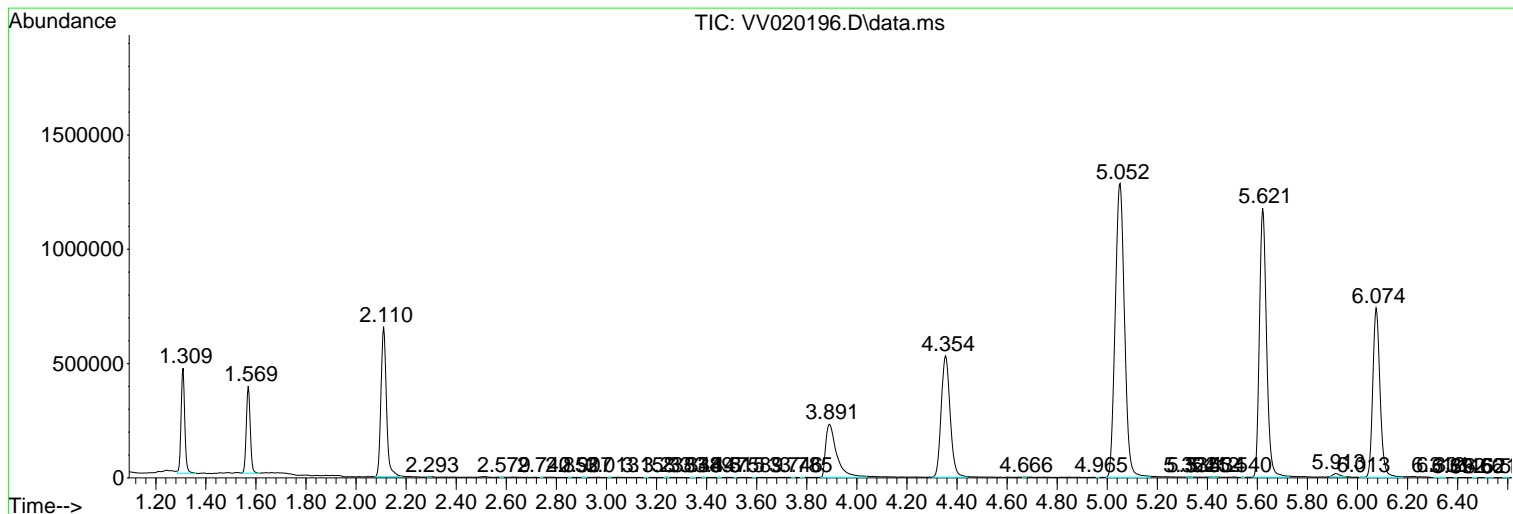
Sum of corrected areas: 25704581

Data Path : Z:\voasrv\HPCHEM1\MSVOA_V\Data\VV012821\
 Data File : VV020196.D
 Acq On : 27 Jan 2021 16:56
 Operator : SY/MD
 Sample : VIBLK
 Misc : 5.0mL/MSVOA_V/WATER
 ALS Vial : 1 Sample Multiplier: 1

Instrument :
 MSVOA_V
 ClientSampled :
 VIBLK

Quant Method : Z:\voasrv\HPCHEM1\MSVOA_V\Method\SOMVLM012821WMA.M
 Quant Title : VOC Analysis

TIC Library : C:\DATABASE\NIST11.L
 TIC Integration Parameters: LSCINT.P



Data Path : Z:\voasrv\HPCHEM1\MSVOA_V\Data\VV012821\
Data File : VV020196.D
Acq On : 27 Jan 2021 16:56
Operator : SY/MD
Sample : VIBLK
Misc : 5.0mL/MSVOA_V/WATER
ALS Vial : 1 Sample Multiplier: 1

Instrument :
MSVOA_V
ClientSampled :
VIBLK

Quant Method : Z:\voasrv\HPCHEM1\MSVOA_V\Method\SOMVLM012821WMA.M
Quant Title : VOC Analysis

TIC Library : C:\DATABASE\NIST11.L
TIC Integration Parameters: LSCINT.P

No Library Search Compounds Detected

Data Path : Z:\voasrv\HPCHEM1\MSVOA_V\Data\VV012821\
Data File : VV020196.D
Acq On : 27 Jan 2021 16:56
Operator : SY/MD
Sample : VIBLK
Misc : 5.0mL/MSVOA_V/WATER
ALS Vial : 1 Sample Multiplier: 1

Instrument :
MSVOA_V
ClientSampled :
VIBLK

Quant Method : Z:\voasrv\HPCHEM1\MSVOA_V\Method\SOMVLM012821WMA.M
Quant Title : VOC Analysis

TIC Library : C:\DATABASE\NIST11.L
TIC Integration Parameters: LSCINT.P

TIC Top Hit name	RT	EstConc	Units	Response	--Internal Standard--		
					#	RT	Resp Conc
