

Data Path : Z:\voasrv\HPCHEM1\MSVOA_V\Data\VV012821\
 Data File : VV020203.D
 Acq On : 27 Jan 2021 19:42
 Operator : SY/MD
 Sample : M1201-07
 Misc : 5.0mL/MSVOA_V/WATER
 ALS Vial : 1 Sample Multiplier: 1

Instrument :
 MSVOA_V
 ClientSampleId :
 VHBLK01

Integration Parameters: LSCINT.P

Integrator: RTE
 Smoothing : OFF Filtering: 5
 Sampling : 1 Min Area: 0 % of largest Peak
 Start Thrs: 0.2 Max Peaks: 100
 Stop Thrs : 0 Peak Location: TOP

If leading or trailing edge < 100 prefer < Baseline drop else tangent >
 Peak separation: 5

Method : Z:\voasrv\HPCHEM1\MSVOA_V\Method\SOMVLM012821WMA.M
 Title : VOC Analysis

Signal : TIC: VV020203.D\data.ms

peak #	R.T. min	first scan	max scan	last scan	PK TY	peak height	corr. area	corr. % max.	% of total
1	1.309	61	68	84	rVB	509272	528831	15.46%	1.999%
2	1.569	141	149	164	rVB	430679	476311	13.93%	1.801%
3	2.110	306	317	345	rVB	757228	1139835	33.33%	4.309%
4	2.280	365	370	372	rBV4	1974	1744	0.05%	0.007%
5	2.460	421	426	430	rVB6	1399	1506	0.04%	0.006%
6	2.508	434	441	442	rBV5	3012	2856	0.08%	0.011%
7	2.614	467	474	476	rBV8	1565	1855	0.05%	0.007%
8	2.920	567	569	572	rVB3	1325	613	0.02%	0.002%
9	2.952	575	579	582	rVV6	908	882	0.03%	0.003%
10	2.971	583	585	588	rVV4	1052	773	0.02%	0.003%
11	2.991	588	591	596	rVB5	1363	1115	0.03%	0.004%
12	3.036	602	605	607	rBV2	893	565	0.02%	0.002%
13	3.049	607	609	612	rVV3	995	668	0.02%	0.003%
14	3.100	623	625	628	rBV3	1242	882	0.03%	0.003%
15	3.196	647	655	659	rVB8	1484	1869	0.05%	0.007%
16	3.373	704	710	713	rBV6	557	584	0.02%	0.002%
17	3.512	749	753	755	rBV3	970	868	0.03%	0.003%
18	3.669	798	802	807	rBV4	1019	1125	0.03%	0.004%
19	3.708	811	814	815	rBV2	1527	805	0.02%	0.003%
20	3.721	815	818	821	rVV3	1005	769	0.02%	0.003%
21	3.820	845	849	853	rBV4	741	658	0.02%	0.002%
22	3.894	861	872	907	rBV2	237877	743511	21.74%	2.811%
23	4.354	998	1015	1038	rBV	549912	1343205	39.27%	5.078%
24	4.756	1138	1140	1143	rBV3	885	591	0.02%	0.002%
25	4.891	1179	1182	1186	rBV5	838	722	0.02%	0.003%
26	4.926	1189	1193	1196	rBV5	580	559	0.02%	0.002%
27	5.052	1214	1232	1262	rBV2	1340032	3420023	100.00%	12.930%
28	5.370	1329	1331	1335	rVB4	1192	708	0.02%	0.003%
29	5.402	1339	1341	1344	rVB4	1441	869	0.03%	0.003%
30	5.421	1344	1347	1351	rBV5	1346	1163	0.03%	0.004%
31	5.441	1351	1353	1356	rVV4	950	548	0.02%	0.002%
32	5.563	1389	1391	1394	rBV4	1273	536	0.02%	0.002%
33	5.621	1394	1409	1440	rBV	1054317	2114549	61.83%	7.994%
34	5.910	1490	1499	1515	rVB5	17531	37054	1.08%	0.140%
35	6.074	1535	1550	1584	rVV	752508	1534648	44.87%	5.802%
36	6.408	1653	1654	1657	rBV2	1151	595	0.02%	0.002%

Data Path : Z:\voasrv\HPCHEM1\MSVOA_V\Data\VW012821\
 Data File : VW020203.D
 Acq On : 27 Jan 2021 19:42
 Operator : SY/MD
 Sample : M1201-07
 Misc : 5.0mL/MSVOA_V/WATER
 ALS Vial : 1 Sample Multiplier: 1

Instrument :
 MSVOA_V
 ClientSampleId :
 VHBLK01

Integration Parameters: LSCINT.P

Integrator: RTE
 Smoothing : OFF Filtering: 5
 Sampling : 1 Min Area: 0 % of largest Peak
 Start Thrs: 0.2 Max Peaks: 100
 Stop Thrs : 0 Peak Location: TOP

If leading or trailing edge < 100 prefer < Baseline drop else tangent >
 Peak separation: 5

Method : Z:\voasrv\HPCHEM1\MSVOA_V\Method\SOMVLM012821WMA.M
 Title : VOC Analysis

37	6.457	1666	1669	1672	rVV4	1207	797	0.02%	0.003%
38	6.479	1674	1676	1679	rVB3	1301	708	0.02%	0.003%
39	6.582	1706	1708	1713	rVB6	964	604	0.02%	0.002%
40	6.608	1713	1716	1719	rBV4	914	737	0.02%	0.003%
41	6.711	1745	1748	1753	rVB4	990	880	0.03%	0.003%
42	6.762	1763	1764	1770	rVB4	1480	809	0.02%	0.003%
43	6.788	1770	1772	1778	rBV5	1321	1392	0.04%	0.005%
44	6.884	1800	1802	1805	rVB2	1196	675	0.02%	0.003%
45	6.990	1821	1835	1859	rVV	418078	755402	22.09%	2.856%
46	7.318	1925	1937	1967	rBV	1567119	2730586	79.84%	10.323%
47	7.624	2021	2032	2064	rBV	293769	519884	15.20%	1.965%
48	7.826	2091	2095	2098	rVB6	1163	1084	0.03%	0.004%
49	7.949	2129	2133	2136	rBV4	1439	1149	0.03%	0.004%
50	7.987	2139	2145	2148	rVV5	1743	2144	0.06%	0.008%
51	8.093	2167	2178	2205	rBV	918569	1578467	46.15%	5.968%
52	8.489	2298	2301	2302	rBV3	1191	674	0.02%	0.003%
53	8.627	2338	2344	2345	rBV5	1385	1128	0.03%	0.004%
54	8.855	2403	2415	2441	rBV	1563297	2576195	75.33%	9.740%
55	9.203	2522	2523	2528	rVB4	1560	981	0.03%	0.004%
56	9.286	2547	2549	2552	rBV3	896	562	0.02%	0.002%
57	9.322	2557	2560	2563	rVB5	1558	1121	0.03%	0.004%
58	9.511	2616	2619	2623	rVB5	1029	691	0.02%	0.003%
59	9.543	2624	2629	2630	rBV3	960	743	0.02%	0.003%
60	9.608	2647	2649	2655	rVB7	678	608	0.02%	0.002%
61	9.768	2695	2699	2703	rVB2	962	635	0.02%	0.002%
62	9.842	2718	2722	2728	rVB4	1310	1249	0.04%	0.005%
63	9.881	2732	2734	2737	rVV3	1093	524	0.02%	0.002%
64	9.897	2737	2739	2743	rVV3	858	576	0.02%	0.002%
65	10.068	2789	2792	2798	rBV6	1041	1072	0.03%	0.004%
66	10.222	2828	2840	2859	rBV	1040135	1645362	48.11%	6.220%
67	10.553	2935	2943	2947	rVV6	1656	2432	0.07%	0.009%
68	10.723	2993	2996	2999	rBV3	1048	598	0.02%	0.002%
69	10.743	2999	3002	3006	rVB3	1070	654	0.02%	0.002%
70	10.788	3013	3016	3017	rBV3	1226	551	0.02%	0.002%
71	10.820	3022	3026	3027	rBV4	946	664	0.02%	0.003%
72	10.858	3036	3038	3044	rVB7	1443	1219	0.04%	0.005%
73	10.910	3051	3054	3057	rVB5	900	612	0.02%	0.002%
74	10.926	3057	3059	3061	rBV3	993	633	0.02%	0.002%
75	11.170	3129	3135	3138	rBV5	2050	2453	0.07%	0.009%
76	11.254	3149	3161	3182	rBV	1659298	2577110	75.35%	9.743%

Data Path : Z:\voasrv\HPCHEM1\MSVOA_V\Data\VW012821\
 Data File : VW020203.D
 Acq On : 27 Jan 2021 19:42
 Operator : SY/MD
 Sample : M1201-07
 Misc : 5.0mL/MSVOA_V/WATER
 ALS Vial : 1 Sample Multiplier: 1

Instrument :
 MSVOA_V
 ClientSampleId :
 VHBLK01

Integration Parameters: LSCINT.P

Integrator: RTE
 Smoothing : OFF
 Sampling : 1
 Start Thrs: 0.2
 Stop Thrs : 0

Filtering: 5
 Min Area: 0 % of largest Peak
 Max Peaks: 100
 Peak Location: TOP

If leading or trailing edge < 100 prefer < Baseline drop else tangent >
 Peak separation: 5

Method : Z:\voasrv\HPCHEM1\MSVOA_V\Method\SOMVLM012821WMA.M
 Title : VOC Analysis

77	11.521	3240	3244	3247	rBV5	815	657	0.02%	0.002%
78	11.547	3250	3252	3254	rVB3	1377	604	0.02%	0.002%
79	11.630	3266	3278	3298	rBV	1677446	2624980	76.75%	9.924%
80	11.871	3350	3353	3356	rVB4	1336	876	0.03%	0.003%
81	12.000	3390	3393	3396	rBV3	842	559	0.02%	0.002%
82	12.077	3411	3417	3419	rBV2	773	758	0.02%	0.003%
83	12.247	3466	3470	3476	rVB	34369	23664	0.69%	0.089%
84	12.389	3512	3514	3517	rBV3	1170	877	0.03%	0.003%
85	12.440	3527	3530	3535	rVB4	1256	900	0.03%	0.003%
86	12.473	3537	3540	3544	rVB6	851	716	0.02%	0.003%
87	12.569	3567	3570	3573	rBV4	1023	574	0.02%	0.002%
88	12.659	3593	3598	3606	rVB9	2952	3955	0.12%	0.015%
89	12.701	3606	3611	3615	rBV7	1543	1438	0.04%	0.005%
90	12.746	3623	3625	3631	rVB3	1321	697	0.02%	0.003%
91	12.775	3631	3634	3637	rBV5	841	585	0.02%	0.002%
92	12.833	3650	3652	3655	rBV3	709	581	0.02%	0.002%
93	13.273	3786	3789	3790	rBV2	1438	703	0.02%	0.003%
94	13.376	3817	3821	3822	rBV4	892	709	0.02%	0.003%
95	13.620	3893	3897	3898	rBV3	1278	937	0.03%	0.004%
96	13.755	3936	3939	3952	rVB3	3142	3775	0.11%	0.014%
97	13.849	3965	3968	3973	rVB5	1541	1379	0.04%	0.005%
98	13.984	4006	4010	4013	rBV3	1101	918	0.03%	0.003%
99	14.193	4071	4075	4077	rBV3	1036	728	0.02%	0.003%
100	15.112	4358	4361	4364	rBV4	999	642	0.02%	0.002%

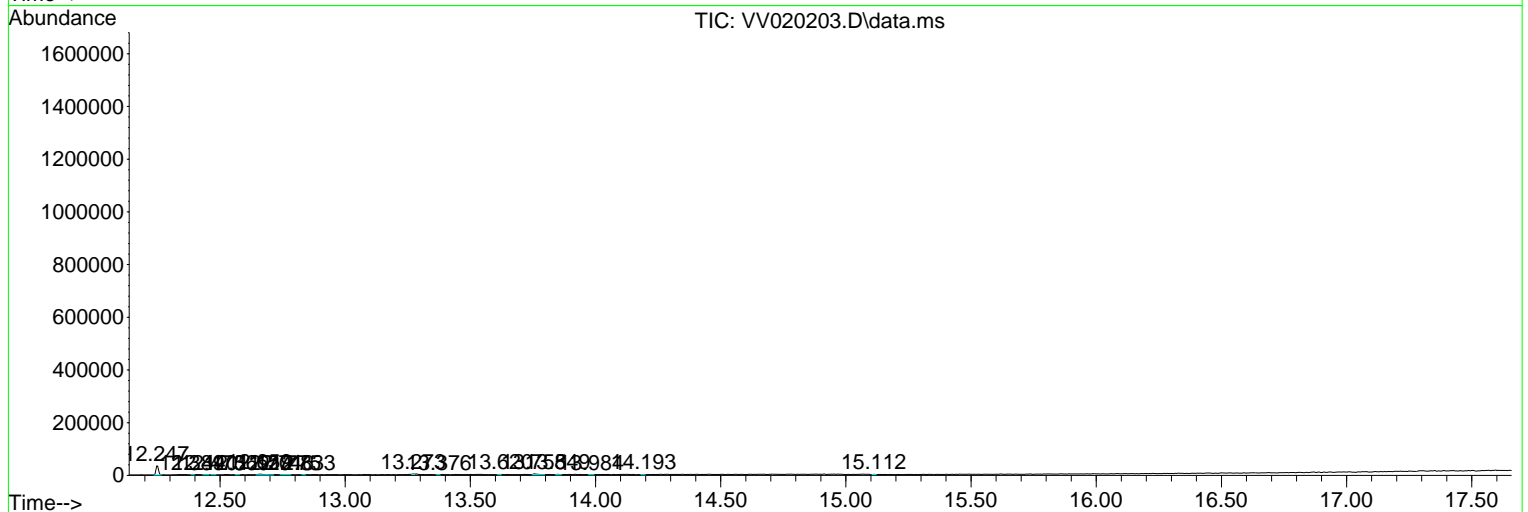
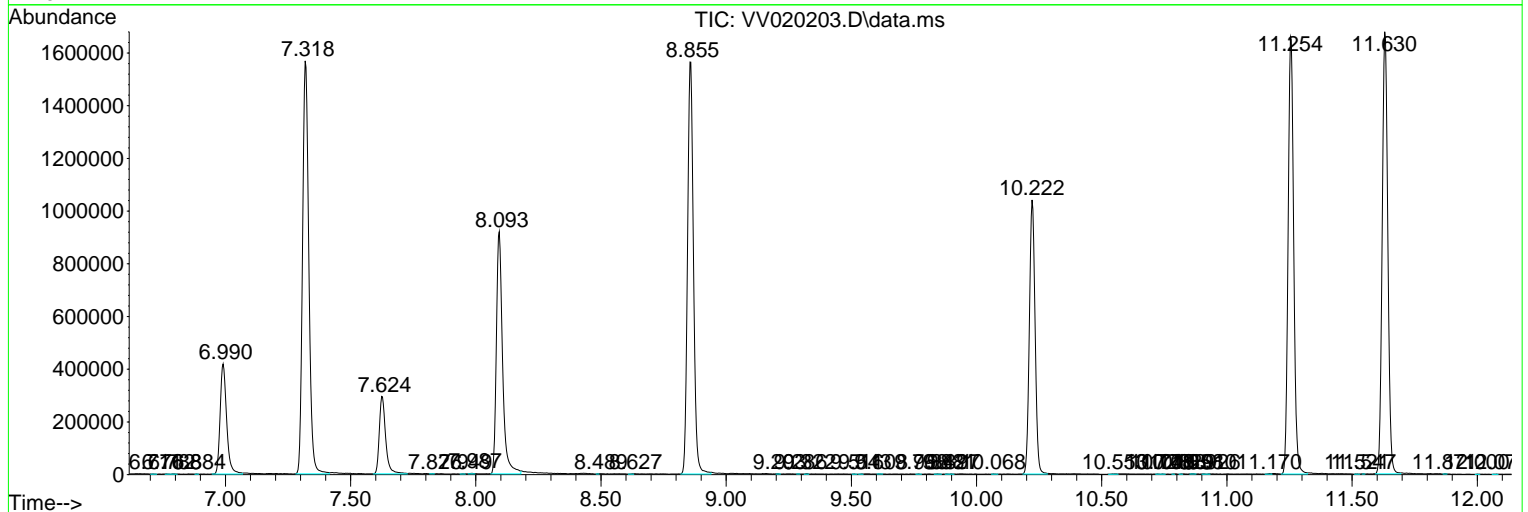
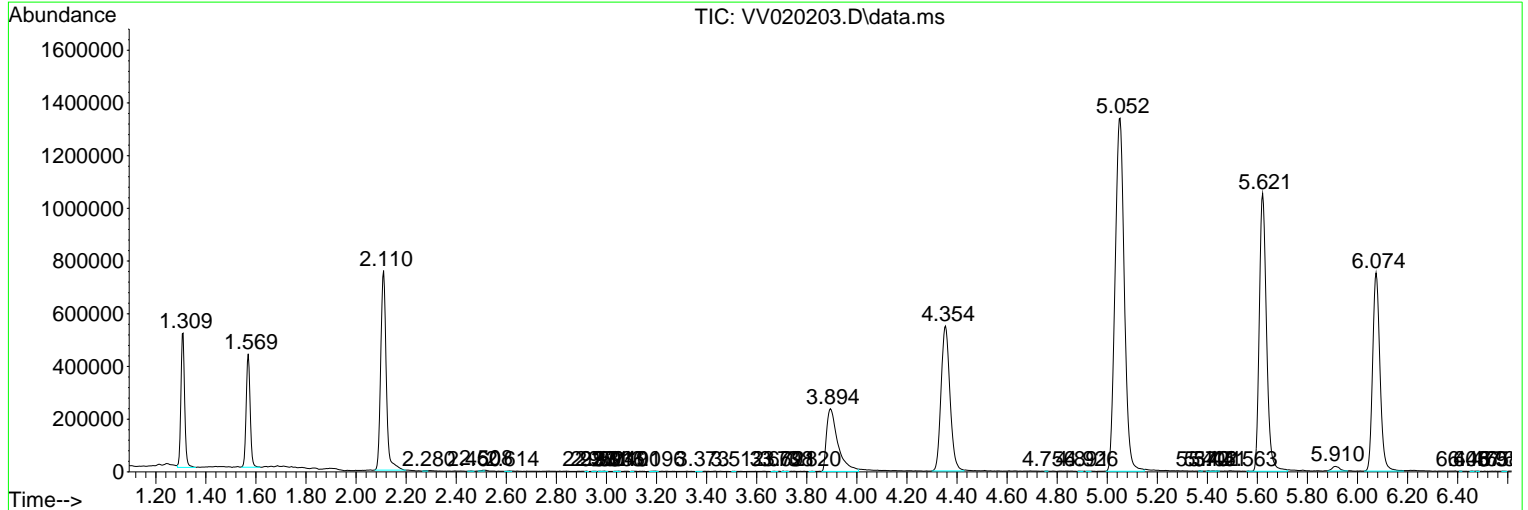
Sum of corrected areas: 26450972

Data Path : Z:\voasrv\HPCHEM1\MSVOA_V\Data\VV012821\
 Data File : VV020203.D
 Acq On : 27 Jan 2021 19:42
 Operator : SY/MD
 Sample : M1201-07
 Misc : 5.0mL/MSVOA_V/WATER
 ALS Vial : 1 Sample Multiplier: 1

Instrument :
 MSVOA_V
 ClientSampleId :
 VHBLK01

Quant Method : Z:\voasrv\HPCHEM1\MSVOA_V\Method\SOMVLM012821WMA.M
 Quant Title : VOC Analysis

TIC Library : C:\DATABASE\NIST11.L
 TIC Integration Parameters: LSCINT.P



Data Path : Z:\voasrv\HPCHEM1\MSVOA_V\Data\VV012821\
Data File : VV020203.D
Acq On : 27 Jan 2021 19:42
Operator : SY/MD
Sample : M1201-07
Misc : 5.0mL/MSVOA_V/WATER
ALS Vial : 1 Sample Multiplier: 1

Instrument :
MSVOA_V
ClientSampled :
VHBLK01

Quant Method : Z:\voasrv\HPCHEM1\MSVOA_V\Method\SOMVLM012821WMA.M
Quant Title : VOC Analysis

TIC Library : C:\DATABASE\NIST11.L
TIC Integration Parameters: LSCINT.P

No Library Search Compounds Detected

Data Path : Z:\voasrv\HPCHEM1\MSVOA_V\Data\VV012821\
Data File : VV020203.D
Acq On : 27 Jan 2021 19:42
Operator : SY/MD
Sample : M1201-07
Misc : 5.0mL/MSVOA_V/WATER
ALS Vial : 1 Sample Multiplier: 1

Instrument :
MSVOA_V
ClientSampled :
VHBLK01

Quant Method : Z:\voasrv\HPCHEM1\MSVOA_V\Method\SOMVLM012821WMA.M
Quant Title : VOC Analysis

TIC Library : C:\DATABASE\NIST11.L
TIC Integration Parameters: LSCINT.P

TIC Top Hit name	RT	EstConc	Units	Response	--Internal Standard--		
					#	RT	Resp Conc
