

Data Path : Z:\voasrv\HPCHEM1\MSVOA_V\Data\VV020321\
 Data File : VV020262.D
 Acq On : 03 Feb 2021 19:29
 Operator : SY/MD
 Sample : M1258-09
 Misc : 5.0mL/MSVOA_V/WATER
 ALS Vial : 1 Sample Multiplier: 1

Instrument :
 MSVOA_V
 ClientSampleId :
 BG4Z1

Integration Parameters: LSCINT.P

Integrator: RTE
 Smoothing : OFF Filtering: 5
 Sampling : 1 Min Area: 0 % of largest Peak
 Start Thrs: 0.2 Max Peaks: 100
 Stop Thrs : 0 Peak Location: TOP

If leading or trailing edge < 100 prefer < Baseline drop else tangent >
 Peak separation: 5

Method : Z:\voasrv\HPCHEM1\MSVOA_V\Method\SOMVLM020321WMA.M
 Title : VOC Analysis

Signal : TIC: VV020262.D\data.ms

peak #	R.T. min	first scan	max scan	last scan	PK TY	peak height	corr. area	corr. % max.	% of total
1	1.309	61	68	78	rVB	163340	165458	9.58%	1.219%
2	1.569	142	149	161	rVB	137555	152521	8.83%	1.124%
3	2.106	306	316	337	rBV	323255	482118	27.92%	3.553%
4	2.347	390	391	394	rBV	219	90	0.01%	0.001%
5	2.367	394	397	399	rBV3	595	331	0.02%	0.002%
6	2.460	423	426	429	rVB2	330	181	0.01%	0.001%
7	2.601	468	470	473	rVB2	308	175	0.01%	0.001%
8	2.618	473	475	477	rVB	185	74	0.00%	0.001%
9	2.630	477	479	480	rBV	143	60	0.00%	0.000%
10	2.643	480	483	486	rBV2	299	266	0.02%	0.002%
11	2.688	495	497	499	rVB2	341	152	0.01%	0.001%
12	2.855	545	549	551	rVB	295	148	0.01%	0.001%
13	2.875	551	555	559	rBV3	465	441	0.03%	0.003%
14	2.936	569	574	580	rVB2	304	363	0.02%	0.003%
15	2.965	581	583	586	rBV	345	217	0.01%	0.002%
16	3.039	595	606	623	rBV4	20907	43448	2.52%	0.320%
17	3.190	650	653	657	rBV	141	118	0.01%	0.001%
18	3.219	660	662	665	rVB2	222	119	0.01%	0.001%
19	3.241	665	669	672	rBV	270	254	0.01%	0.002%
20	3.306	684	689	691	rBV2	252	261	0.02%	0.002%
21	3.373	707	710	711	rBV	157	86	0.00%	0.001%
22	3.386	711	714	718	rVB2	269	185	0.01%	0.001%
23	3.431	725	728	729	rBV	130	71	0.00%	0.001%
24	3.511	750	753	761	rVB2	455	427	0.02%	0.003%
25	3.550	761	765	770	rBV2	197	243	0.01%	0.002%
26	3.627	786	789	792	rBB	177	83	0.00%	0.001%
27	3.643	792	794	798	rVB2	160	95	0.01%	0.001%
28	3.663	798	800	801	rBV2	186	69	0.00%	0.001%
29	3.701	809	812	815	rBV	107	66	0.00%	0.000%
30	3.759	815	830	850	rVB4	18393	46391	2.69%	0.342%
31	3.830	850	852	856	rBV	157	110	0.01%	0.001%
32	3.888	859	870	896	rBV	96174	272582	15.79%	2.009%
33	4.347	997	1013	1043	rBV	250521	626812	36.30%	4.620%
34	4.585	1085	1087	1088	rBV	172	64	0.00%	0.000%
35	4.605	1090	1093	1098	rVB2	426	336	0.02%	0.002%
36	4.627	1098	1100	1102	rBV2	319	142	0.01%	0.001%

Data Path : Z:\voasrv\HPCHEM1\MSVOA_V\Data\VW020321\
 Data File : VW020262.D
 Acq On : 03 Feb 2021 19:29
 Operator : SY/MD
 Sample : M1258-09
 Misc : 5.0mL/MSVOA_V/WATER
 ALS Vial : 1 Sample Multiplier: 1

Instrument :
 MSVOA_V
 ClientSampleId :
 BG4Z1

Integration Parameters: LSCINT.P

Integrator: RTE
 Smoothing : OFF
 Sampling : 1
 Start Thrs : 0.2
 Stop Thrs : 0

Filtering: 5
 Min Area: 0 % of largest Peak
 Max Peaks: 100
 Peak Location: TOP

If leading or trailing edge < 100 prefer < Baseline drop else tangent >
 Peak separation: 5

Method : Z:\voasrv\HPCHEM1\MSVOA_V\Method\SOMVLM020321WMA.M
 Title : VOC Analysis

37	4.643	1102	1105	1108	rBV2	300	211	0.01%	0.002%
38	4.708	1122	1125	1126	rBV2	340	185	0.01%	0.001%
39	4.865	1171	1174	1177	rBV	259	171	0.01%	0.001%
40	4.881	1177	1179	1181	rVV	148	44	0.00%	0.000%
41	4.981	1207	1210	1212	rBV	116	82	0.00%	0.001%
42	5.045	1212	1230	1256	rBV2	607796	1546106	89.55%	11.395%
43	5.447	1352	1355	1358	rVB2	346	209	0.01%	0.002%
44	5.473	1361	1363	1366	rBV2	464	376	0.02%	0.003%
45	5.553	1386	1388	1390	rBV	427	181	0.01%	0.001%
46	5.617	1395	1408	1444	rBV	640661	1273582	73.77%	9.387%
47	5.843	1476	1478	1480	rBV	527	207	0.01%	0.002%
48	5.910	1487	1499	1513	rBV4	14266	29496	1.71%	0.217%
49	5.984	1520	1522	1524	rBV2	377	173	0.01%	0.001%
50	6.071	1535	1549	1572	rBV	330047	678689	39.31%	5.002%
51	6.306	1620	1622	1628	rVB3	592	373	0.02%	0.003%
52	6.334	1628	1631	1638	rVB2	757	698	0.04%	0.005%
53	6.370	1638	1642	1643	rBV2	306	216	0.01%	0.002%
54	6.408	1652	1654	1655	rBV2	189	77	0.00%	0.001%
55	6.469	1671	1673	1675	rBV	182	90	0.01%	0.001%
56	6.595	1710	1712	1713	rBV	260	101	0.01%	0.001%
57	6.640	1722	1726	1728	rBV	318	304	0.02%	0.002%
58	6.836	1785	1787	1793	rBV2	176	173	0.01%	0.001%
59	6.926	1812	1815	1819	rBV2	238	269	0.02%	0.002%
60	6.987	1823	1834	1860	rBV2	196899	355270	20.58%	2.618%
61	7.187	1894	1896	1898	rBV2	438	198	0.01%	0.001%
62	7.228	1906	1909	1911	rBV	420	272	0.02%	0.002%
63	7.318	1924	1937	1959	rBV	779994	1356967	78.59%	10.001%
64	7.624	2021	2032	2055	rBV	137558	239054	13.85%	1.762%
65	7.781	2078	2081	2084	rBV2	491	309	0.02%	0.002%
66	7.849	2099	2102	2106	rBV2	328	192	0.01%	0.001%
67	7.942	2122	2131	2139	rBV3	5969	10568	0.61%	0.078%
68	8.090	2167	2177	2216	rBV	353186	646681	37.46%	4.766%
69	8.469	2293	2295	2298	rBV	266	154	0.01%	0.001%
70	8.653	2346	2352	2353	rBV	331	257	0.01%	0.002%
71	8.688	2359	2363	2365	rBV2	284	237	0.01%	0.002%
72	8.714	2369	2371	2373	rVB2	228	100	0.01%	0.001%
73	8.855	2403	2415	2448	rBV	972676	1565389	90.67%	11.538%
74	9.260	2538	2541	2547	rVB2	371	418	0.02%	0.003%
75	9.286	2547	2549	2552	rBV2	223	177	0.01%	0.001%
76	9.411	2586	2588	2591	rVB	255	96	0.01%	0.001%

Data Path : Z:\voasrv\HPCHEM1\MSVOA_V\Data\VW020321\
 Data File : VW020262.D
 Acq On : 03 Feb 2021 19:29
 Operator : SY/MD
 Sample : M1258-09
 Misc : 5.0mL/MSVOA_V/WATER
 ALS Vial : 1 Sample Multiplier: 1

Instrument :
 MSVOA_V
 ClientSampleId :
 BG4Z1

Integration Parameters: LSCINT.P

Integrator: RTE
 Smoothing : OFF Filtering: 5
 Sampling : 1 Min Area: 0 % of largest Peak
 Start Thrs: 0.2 Max Peaks: 100
 Stop Thrs : 0 Peak Location: TOP

If leading or trailing edge < 100 prefer < Baseline drop else tangent >
 Peak separation: 5

Method : Z:\voasrv\HPCHEM1\MSVOA_V\Method\SOMVLM020321WMA.M
 Title : VOC Analysis

77	9.424	2591	2592	2593	rBV	218	52	0.00%	0.000%
78	9.466	2602	2605	2607	rBV2	244	207	0.01%	0.002%
79	9.701	2675	2678	2681	rVB	322	199	0.01%	0.001%
80	9.852	2723	2725	2726	rBV	162	88	0.01%	0.001%
81	9.887	2733	2736	2738	rBV	301	219	0.01%	0.002%
82	9.974	2761	2763	2767	rVB2	306	216	0.01%	0.002%
83	10.003	2767	2772	2773	rBV	202	151	0.01%	0.001%
84	10.061	2786	2790	2792	rBV	308	277	0.02%	0.002%
85	10.093	2797	2800	2802	rBV2	197	135	0.01%	0.001%
86	10.219	2828	2839	2857	rBV	514221	814295	47.16%	6.002%
87	10.386	2883	2891	2906	rVB	12714	20327	1.18%	0.150%
88	10.524	2933	2934	2935	rBV	322	110	0.01%	0.001%
89	10.923	3052	3058	3066	rBV3	930	1284	0.07%	0.009%
90	11.042	3093	3095	3097	rBV	309	169	0.01%	0.001%
91	11.254	3149	3161	3190	rBV	1128609	1726534	100.00%	12.725%
92	11.511	3239	3241	3243	rBV	346	208	0.01%	0.002%
93	11.630	3265	3278	3302	rBV	957177	1490613	86.34%	10.986%
94	12.090	3419	3421	3426	rBV2	376	349	0.02%	0.003%
95	12.463	3534	3537	3538	rBV2	446	233	0.01%	0.002%
96	12.656	3591	3597	3608	rVB4	2849	4333	0.25%	0.032%
97	13.759	3933	3940	3949	rVB3	3104	4792	0.28%	0.035%

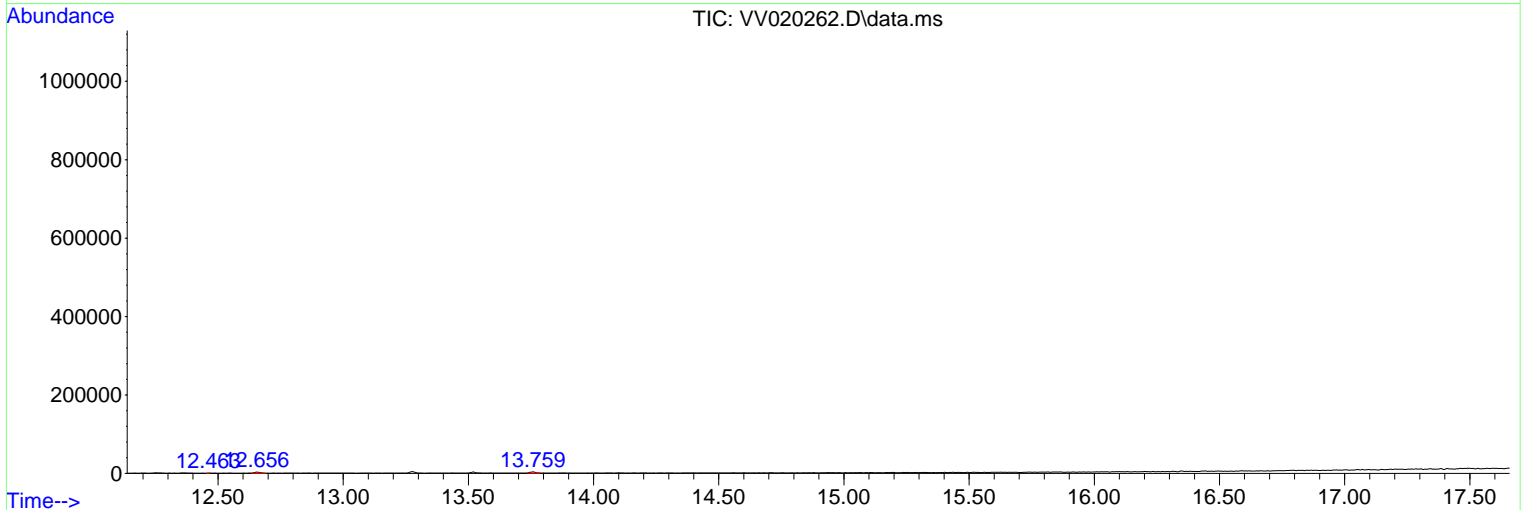
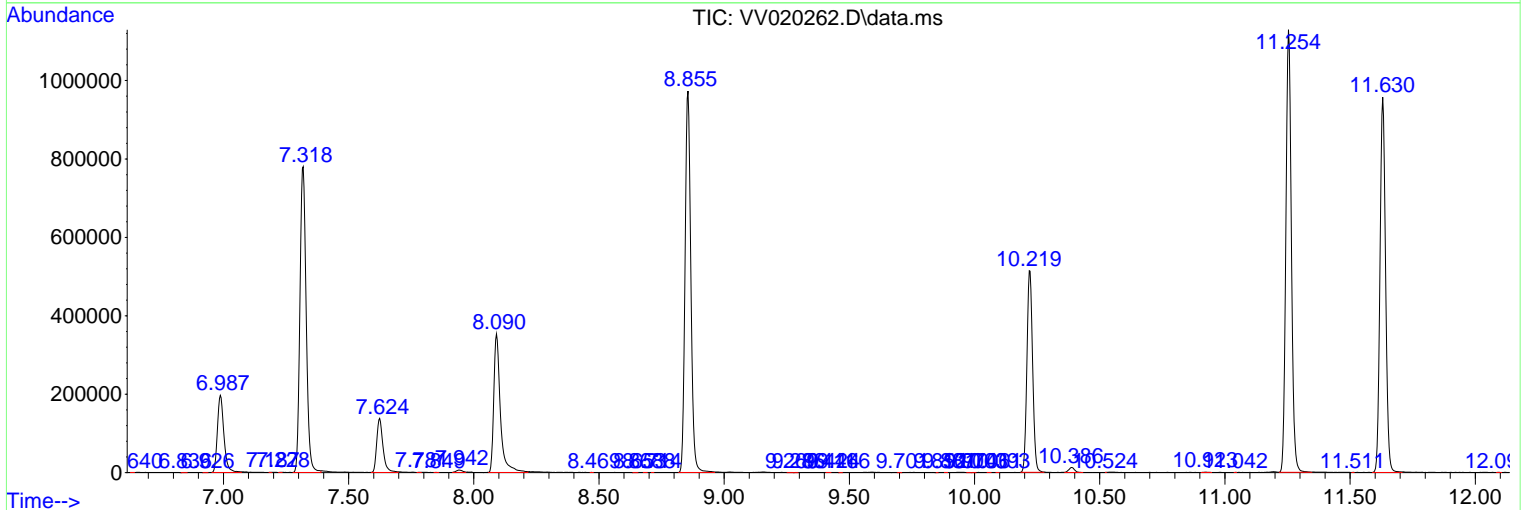
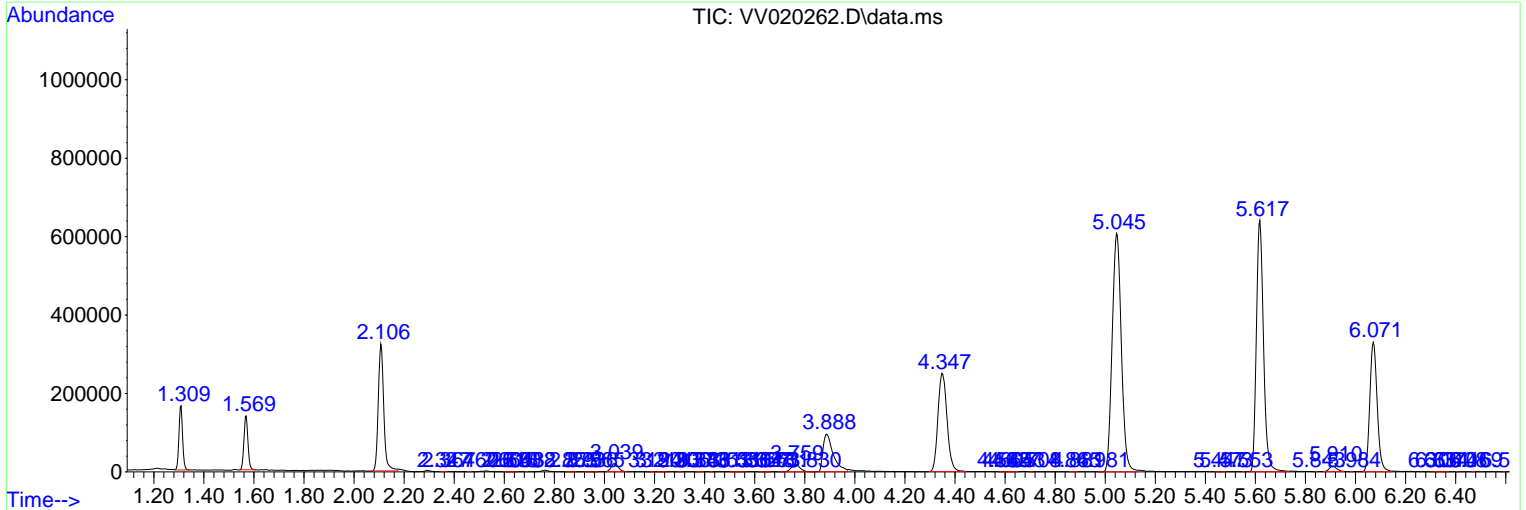
Sum of corrected areas: 13567700

Data Path : Z:\voasrv\HPCHEM1\MSVOA_V\Data\VV020321\
 Data File : VV020262.D
 Acq On : 03 Feb 2021 19:29
 Operator : SY/MD
 Sample : M1258-09
 Misc : 5.0mL/MSVOA_V/WATER
 ALS Vial : 1 Sample Multiplier: 1

Instrument :
 MSVOA_V
 ClientSampled :
 BG4Z1

Quant Method : Z:\voasrv\HPCHEM1\MSVOA_V\Method\SOMVLM020321WMA.M
 Quant Title : VOC Analysis

TIC Library : C:\DATABASE\NIST11.L
 TIC Integration Parameters: LSCINT.P



Data Path : Z:\voasrv\HPCHEM1\MSVOA_V\Data\VV020321\
Data File : VV020262.D
Acq On : 03 Feb 2021 19:29
Operator : SY/MD
Sample : M1258-09
Misc : 5.0mL/MSVOA_V/WATER
ALS Vial : 1 Sample Multiplier: 1

Instrument :
MSVOA_V
ClientSampleId :
BG4Z1

Quant Method : Z:\voasrv\HPCHEM1\MSVOA_V\Method\SOMVLM020321WMA.M
Quant Title : VOC Analysis

TIC Library : C:\DATABASE\NIST11.L
TIC Integration Parameters: LSCINT.P

No Library Search Compounds Detected

Data Path : Z:\voasrv\HPCHEM1\MSVOA_V\Data\VV020321\
Data File : VV020262.D
Acq On : 03 Feb 2021 19:29
Operator : SY/MD
Sample : M1258-09
Misc : 5.0mL/MSVOA_V/WATER
ALS Vial : 1 Sample Multiplier: 1

Instrument :
MSVOA_V
ClientSampled :
BG4Z1

Quant Method : Z:\voasrv\HPCHEM1\MSVOA_V\Method\SOMVLM020321WMA.M
Quant Title : VOC Analysis

TIC Library : C:\DATABASE\NIST11.L
TIC Integration Parameters: LSCINT.P

TIC Top Hit name	RT	EstConc	Units	Response	--Internal Standard--			
					#	RT	Resp	Conc
