

Data Path : Z:\voasrv\HPCHEM1\MSVOA_V\Data\VW020724\
 Data File : VW034041.D
 Acq On : 07 Feb 2024 19:19
 Operator : SY/MD
 Sample : P1383-06MS
 Misc : 25.0mL/MSVOA_V/WATER
 ALS Vial : 26 Sample Multiplier: 1

Instrument :
 MSVOA_V
 ClientSampleId :

Quant Time: Feb 08 04:52:47 2024
 Quant Method : Z:\voasrv\HPCHEM1\MSVOA_V\Method\SFAMVTR012524WMA.M
 Quant Title : TRACE VOA SFAM1.0
 QLast Update : Thu Feb 08 04:46:29 2024
 Response via : Initial Calibration

Compound	R.T.	QIon	Response	Conc	Units	Dev(Min)

Internal Standards						
1) 1,4-Difluorobenzene	5.538	114	79810	5.000	ug/L	0.00
28) Chlorobenzene-d5	8.786	117	75424	5.000	ug/L	0.00
58) 1,4-Dichlorobenzene-d4	11.188	152	39895	5.000	ug/L	0.00

System Monitoring Compounds						
4) Vinyl Chloride-d3	1.278	65	21719	3.514	ug/L	0.00
Spiked Amount	5.000	Range 40 - 130	Recovery	=	70.200%	
7) Chloroethane-d5	1.532	69	21929	4.050	ug/L	0.00
Spiked Amount	5.000	Range 65 - 130	Recovery	=	81.000%	
11) 1,1-Dichloroethene-d2	2.060	65	12138	4.072	ug/L	0.00
Spiked Amount	5.000	Range 60 - 125	Recovery	=	81.400%	
20) 2-Butanone-d5	3.793	46	58430	56.286	ug/L	-0.02
Spiked Amount	50.000	Range 40 - 130	Recovery	=	112.580%	
24) Chloroform-d	4.252	84	52983	4.717	ug/L	0.00
Spiked Amount	5.000	Range 70 - 125	Recovery	=	94.400%	
26) 1,2-Dichloroethane-d4	4.947	65	26156	4.983	ug/L	0.00
Spiked Amount	5.000	Range 70 - 130	Recovery	=	99.600%	
32) Benzene-d6	4.963	84	95420	4.217	ug/L	0.00
Spiked Amount	5.000	Range 70 - 125	Recovery	=	84.400%	
36) 1,2-Dichloropropane-d6	5.992	67	27778	4.391	ug/L	0.00
Spiked Amount	5.000	Range 60 - 140	Recovery	=	87.800%	
41) Toluene-d8	7.246	98	88584	4.259	ug/L	0.00
Spiked Amount	5.000	Range 70 - 130	Recovery	=	85.200%	
43) trans-1,3-Dichloroprop...	7.558	79	10956	4.587	ug/L	0.00
Spiked Amount	5.000	Range 55 - 130	Recovery	=	91.800%	
46) 2-Hexanone-d5	8.024	63	48353	56.709	ug/L	0.00
Spiked Amount	50.000	Range 45 - 130	Recovery	=	113.420%	
56) 1,1,2,2-Tetrachloroeth...	10.156	84	20129	5.249	ug/L	0.00
Spiked Amount	5.000	Range 65 - 120	Recovery	=	105.000%	
66) 1,2-Dichlorobenzene-d4	11.561	152	34199	4.713	ug/L	0.00
Spiked Amount	5.000	Range 80 - 120	Recovery	=	94.200%	

Target Compounds	Qvalue					
2) Dichlorodifluoromethane	1.108	85	37120	5.075	ug/L	99
3) Chloromethane	1.217	50	39325	4.929	ug/L	98
5) Vinyl chloride	1.285	62	38324	5.027	ug/L	90
6) Bromomethane	1.487	94	19553	4.870	ug/L	98
8) Chloroethane	1.548	64	23695	4.556	ug/L	98
9) Trichlorofluoromethane	1.715	101	60641	5.520	ug/L	98
10) 1,1,2-Trichloro-1,2,2-...	2.069	101	30254	5.268	ug/L	97
12) 1,1-Dichloroethene	2.072	96	29939	5.370	ug/L	86
13) Acetone	2.117	43	39665	50.365	ug/L #	34
14) Carbon disulfide	2.243	76	83000	4.601	ug/L	99
15) Methyl Acetate	2.381	43	8985	4.821	ug/L	99
16) Methylene chloride	2.449	84	27882	5.212	ug/L	94
17) Methyl tert-butyl Ether	2.709	73	66865	5.837	ug/L	100
18) trans-1,2-Dichloroethene	2.696	96	28775	5.067	ug/L	95
19) 1,1-Dichloroethane	3.114	63	55427	5.312	ug/L	97
21) 2-Butanone	3.873	43	57724	55.465	ug/L #	55
22) cis-1,2-Dichloroethene	3.818	96	32064	4.977	ug/L	95
23) Bromochloromethane	4.153	128	12918	5.767	ug/L	92
25) Chloroform	4.278	83	55733	5.284	ug/L	95

Data Path : Z:\voasrv\HPCHEM1\MSVOA_V\Data\VW020724\
 Data File : VW034041.D
 Acq On : 07 Feb 2024 19:19
 Operator : SY/MD
 Sample : P1383-06MS
 Misc : 25.0mL/MSVOA_V/WATER
 ALS Vial : 26 Sample Multiplier: 1

Instrument :
 MSVOA_V
 ClientSampleId :

Quant Time: Feb 08 04:52:47 2024
 Quant Method : Z:\voasrv\HPCHEM1\MSVOA_V\Method\SFAMVTR012524WMA.M
 Quant Title : TRACE VOA SFAM1.0
 QLast Update : Thu Feb 08 04:46:29 2024
 Response via : Initial Calibration

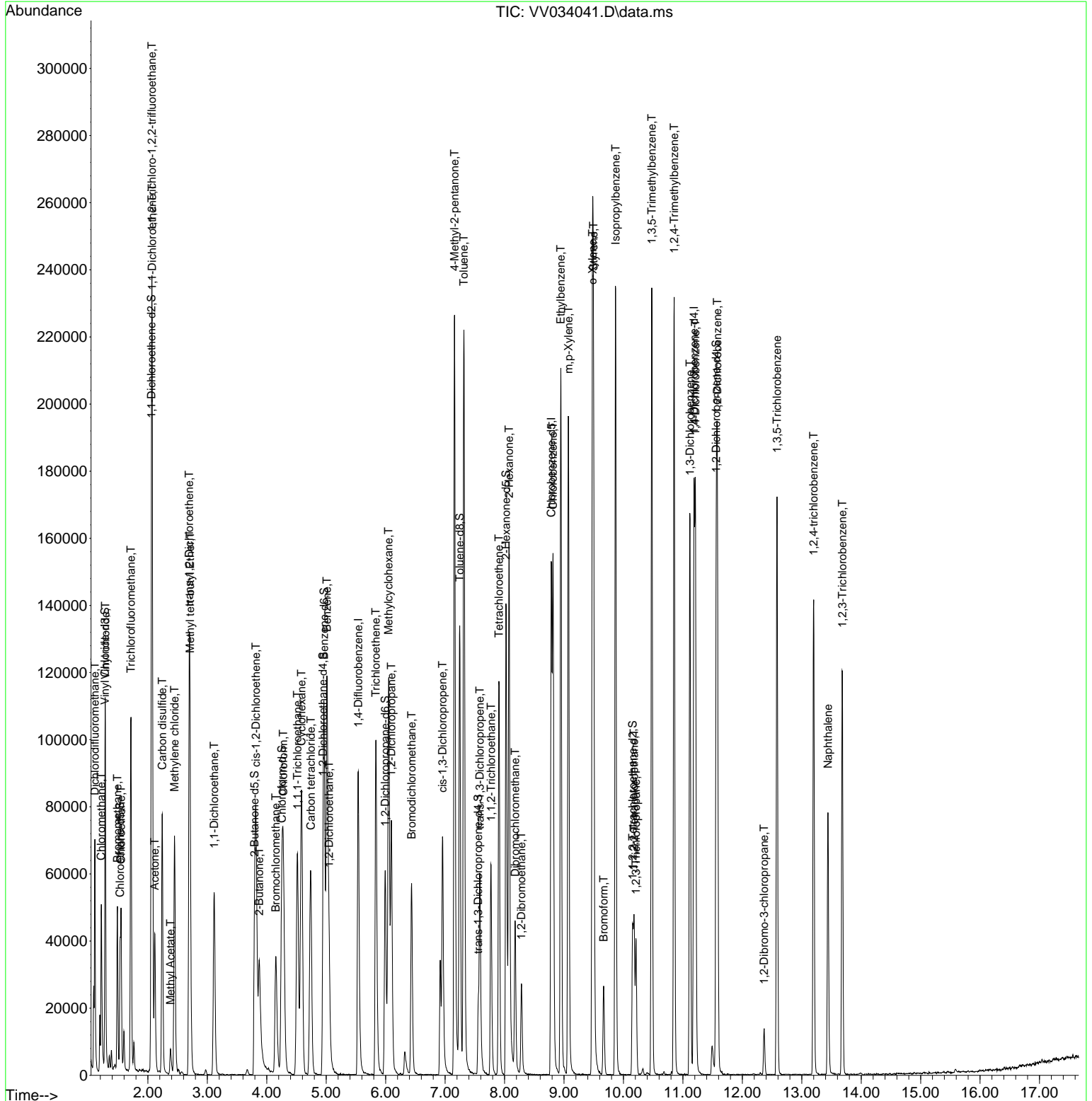
Compound	R.T.	QIon	Response	Conc	Units	Dev(Min)
27) 1,2-Dichloroethane	5.047	62	35639	5.901	ug/L	100
29) 1,1,1-Trichloroethane	4.516	97	54680	5.400	ug/L	98
30) Cyclohexane	4.584	56	47929	4.867	ug/L	98
31) Carbon tetrachloride	4.741	117	46415	5.238	ug/L	99
33) Benzene	5.011	78	115878	5.122	ug/L	100
34) Trichloroethene	5.834	95	34731	5.305	ug/L	99
35) Methylcyclohexane	6.050	83	50466	4.911	ug/L	98
37) 1,2-Dichloropropane	6.095	63	26938	4.916	ug/L	98
38) Bromodichloromethane	6.436	83	38555	5.360	ug/L	98
39) cis-1,3-Dichloropropene	6.956	75	43745	5.247	ug/L	95
40) 4-Methyl-2-pentanone	7.159	43	149219	56.866	ug/L	97
42) Toluene	7.317	91	159381	6.592	ug/L	97
44) trans-1,3-Dichloropropene	7.583	75	34460	5.383	ug/L	98
45) 1,1,2-Trichloroethane	7.773	97	18537	5.478	ug/L	97
47) Tetrachloroethene	7.905	164	25465	4.787	ug/L	93
48) 2-Hexanone	8.075	43	103309	55.852	ug/L	100
49) Dibromochloromethane	8.178	129	21406	5.324	ug/L	95
50) 1,2-Dibromoethane	8.284	107	16973	5.589	ug/L	92
51) Chlorobenzene	8.815	112	80624	5.274	ug/L	99
52) Ethylbenzene	8.947	91	145193	5.217	ug/L	98
53) m,p-Xylene	9.075	106	53977	5.132	ug/L	99
54) o-Xylene	9.480	106	53570	5.282	ug/L	96
55) Styrene	9.497	104	87495	5.388	ug/L	97
57) 1,1,2,2-Tetrachloroethane	10.178	83	20730	5.805	ug/L	100
59) Bromoform	9.667	173	11661	5.306	ug/L	99
60) Isopropylbenzene	9.869	105	146689	4.969	ug/L	99
61) 1,2,3-Trichloropropane	10.210	75	14714	5.365	ug/L	98
62) 1,3,5-Trimethylbenzene	10.477	105	122984	4.928	ug/L	98
63) 1,2,4-Trimethylbenzene	10.853	105	123056	5.075	ug/L	98
64) 1,3-Dichlorobenzene	11.120	146	66123	5.137	ug/L	99
65) 1,4-Dichlorobenzene	11.210	146	65475	5.137	ug/L	98
67) 1,2-Dichlorobenzene	11.580	146	59312	5.366	ug/L	97
68) 1,2-Dibromo-3-chloropr...	12.368	75	3458	6.016	ug/L	97
69) 1,3,5-Trichlorobenzene	12.583	180	50363	5.056	ug/L	99
70) 1,2,4-trichlorobenzene	13.201	180	41463	5.332	ug/L	99
71) Naphthalene	13.442	128	61147	6.001	ug/L	100
72) 1,2,3-Trichlorobenzene	13.683	180	34391	5.520	ug/L	98

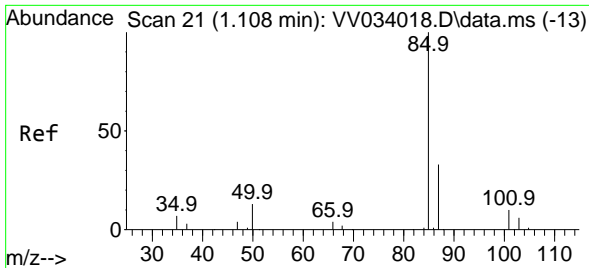
(#) = qualifier out of range (m) = manual integration (+) = signals summed

Data Path : Z:\voasrv\HPCHEM1\MSVOA_V\Data\VV020724\
Data File : VV034041.D
Acq On : 07 Feb 2024 19:19
Operator : SY/MD
Sample : P1383-06MS
Misc : 25.0mL/MSVOA_V/WATER
ALS Vial : 26 Sample Multiplier: 1

Instrument :
MSVOA_V
ClientSampleId :

Quant Time: Feb 08 04:52:47 2024
Quant Method : Z:\voasrv\HPCHEM1\MSVOA_V\Method\SFAMVTR012524WMA.M
Quant Title : TRACE VOA SFAM1.0
QLast Update : Thu Feb 08 04:46:29 2024
Response via : Initial Calibration

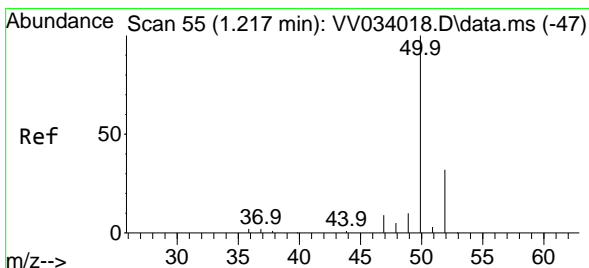
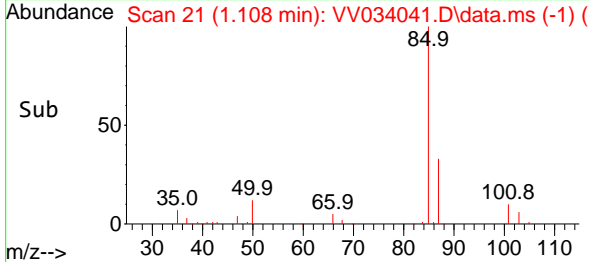
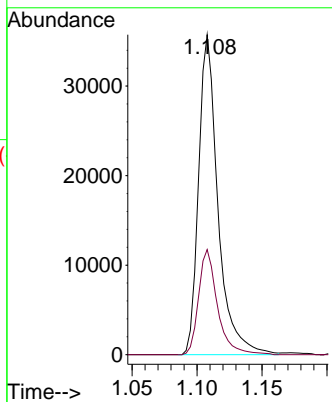
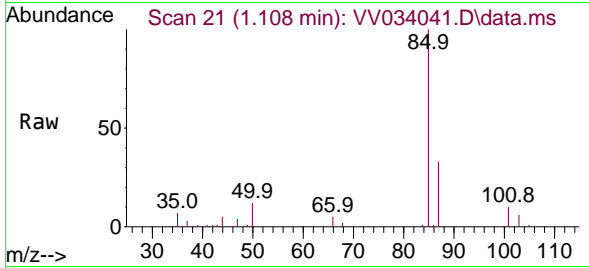




#2
 Dichlorodifluoromethane
 Concen: 5.075 ug/L
 RT: 1.108 min Scan# 21
 Delta R.T. 0.000 min
 Lab File: VV034041.D
 Acq: 07 Feb 2024 19:19

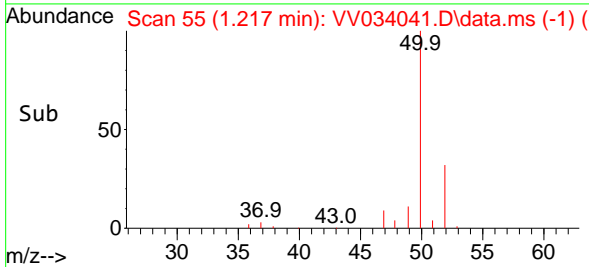
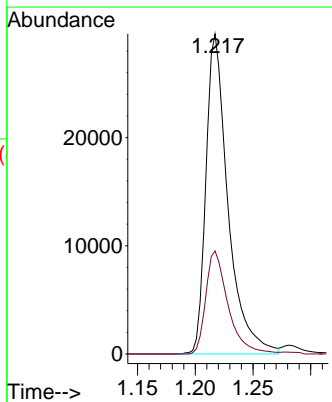
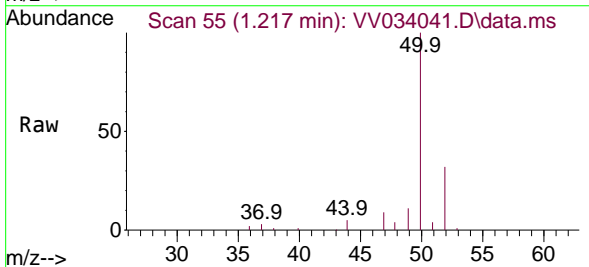
Instrument :
 MSVOA_V
 ClientSampleId :

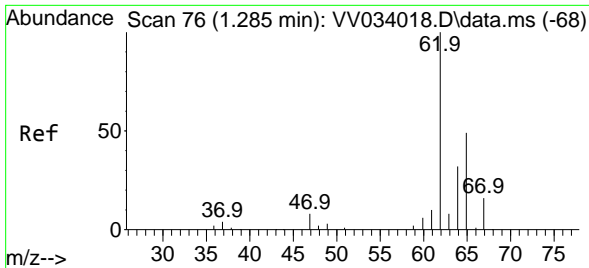
Tgt Ion: 85 Resp: 37120
 Ion Ratio Lower Upper
 85 100
 87 32.0 26.2 39.4



#3
 Chloromethane
 Concen: 4.929 ug/L
 RT: 1.217 min Scan# 55
 Delta R.T. 0.000 min
 Lab File: VV034041.D
 Acq: 07 Feb 2024 19:19

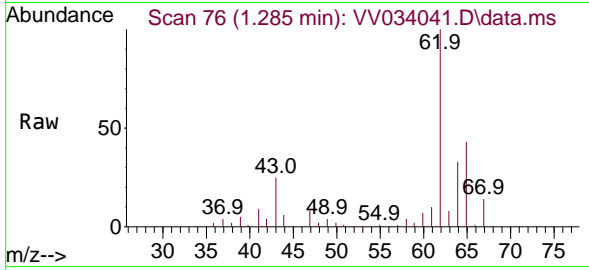
Tgt Ion: 50 Resp: 39325
 Ion Ratio Lower Upper
 50 100
 52 32.2 23.4 43.4



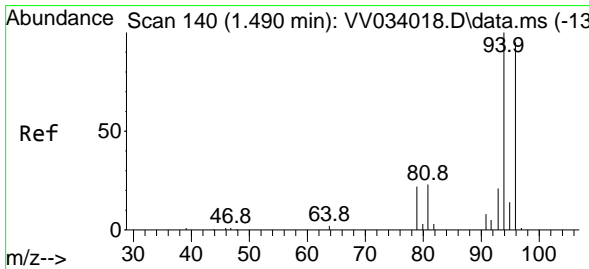
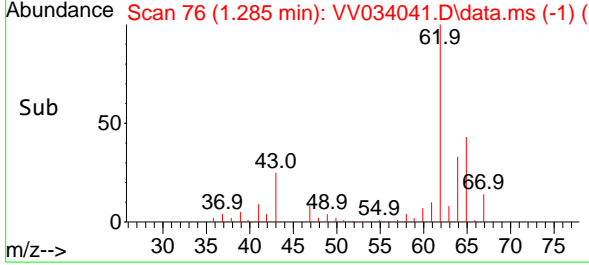
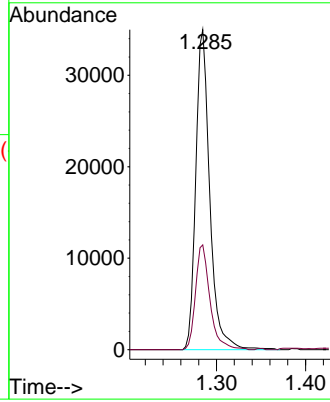


#5
 Vinyl chloride
 Concen: 5.027 ug/L
 RT: 1.285 min Scan# 70
 Delta R.T. 0.000 min
 Lab File: VV034041.D
 Acq: 07 Feb 2024 19:19

Instrument :
 MSVOA_V
 ClientSampleId :

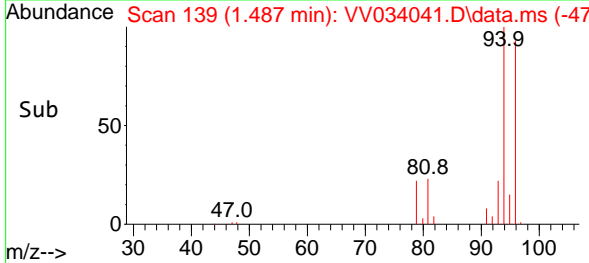
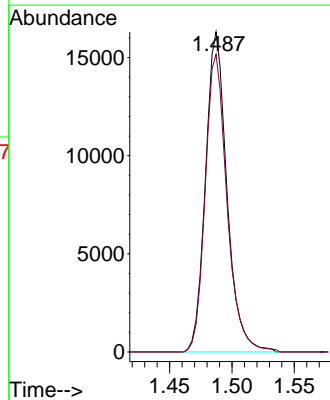
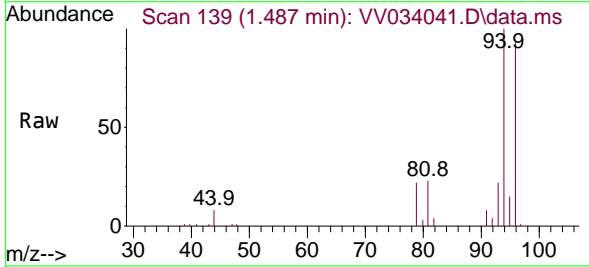


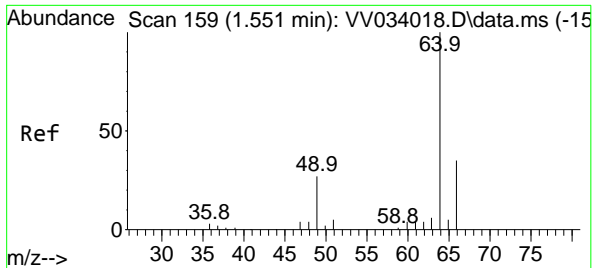
Tgt Ion: 62 Resp: 38324
 Ion Ratio Lower Upper
 62 100
 64 32.7 27.2 50.4



#6
 Bromomethane
 Concen: 4.870 ug/L
 RT: 1.487 min Scan# 139
 Delta R.T. -0.003 min
 Lab File: VV034041.D
 Acq: 07 Feb 2024 19:19

Tgt Ion: 94 Resp: 19553
 Ion Ratio Lower Upper
 94 100
 96 93.0 66.6 123.8

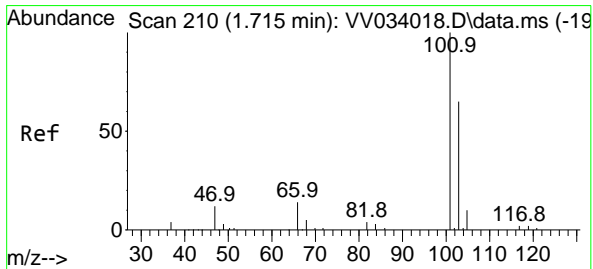
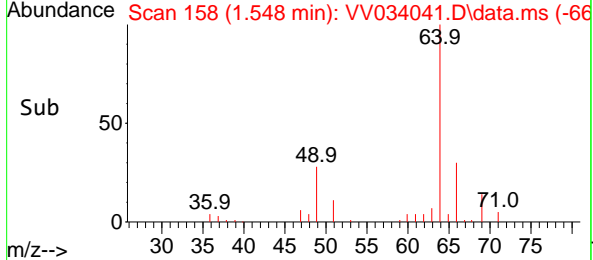
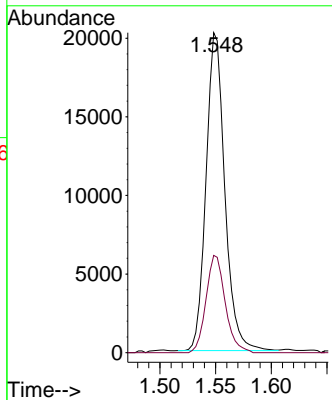
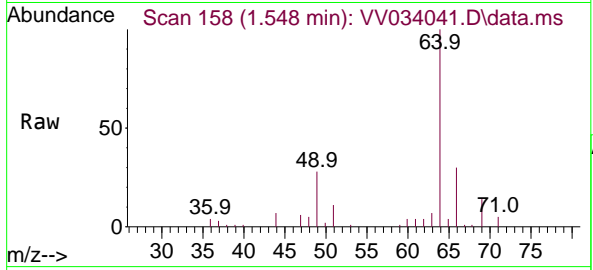




#8
 Chloroethane
 Concen: 4.556 ug/L
 RT: 1.548 min Scan# 11
 Delta R.T. -0.003 min
 Lab File: VV034041.D
 Acq: 07 Feb 2024 19:19

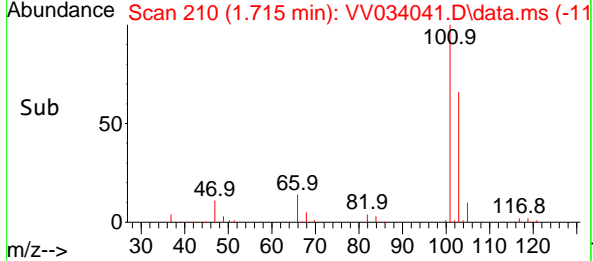
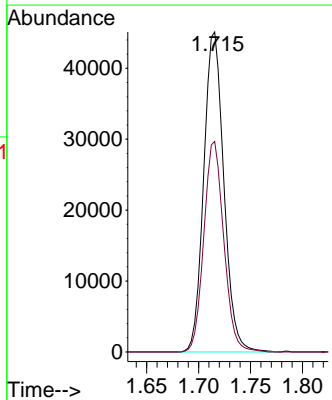
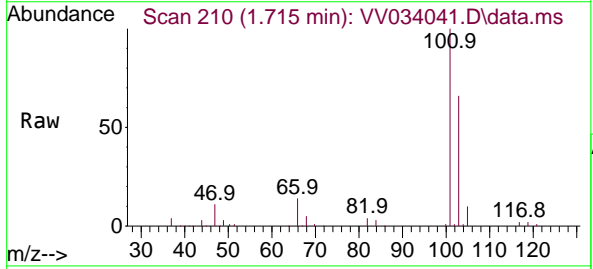
Instrument : MSVOA_V
 ClientSampleId :

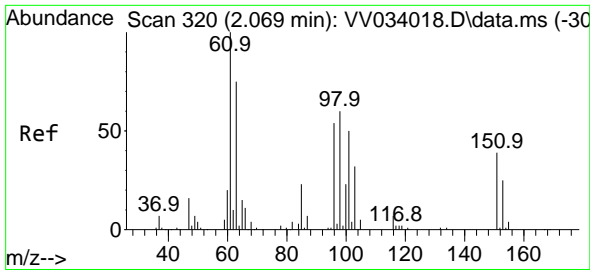
Tgt Ion: 64 Resp: 23695
 Ion Ratio Lower Upper
 64 100
 66 30.4 22.0 41.0



#9
 Trichlorofluoromethane
 Concen: 5.520 ug/L
 RT: 1.715 min Scan# 210
 Delta R.T. 0.000 min
 Lab File: VV034041.D
 Acq: 07 Feb 2024 19:19

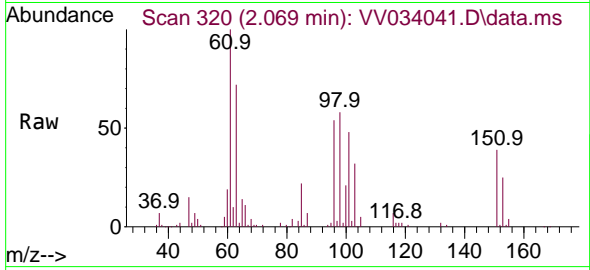
Tgt Ion:101 Resp: 60641
 Ion Ratio Lower Upper
 101 100
 103 65.3 51.0 76.4



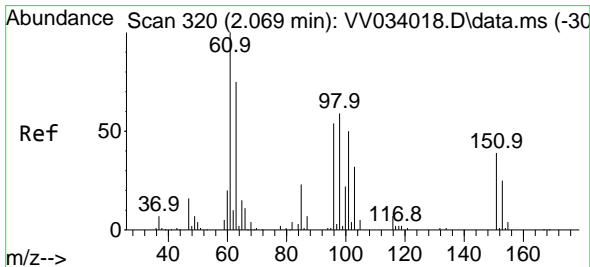
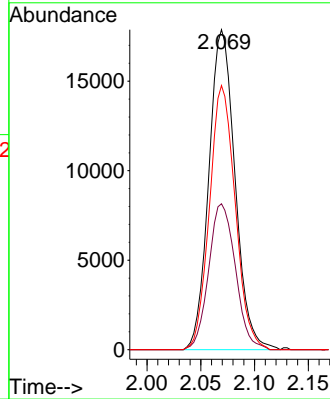
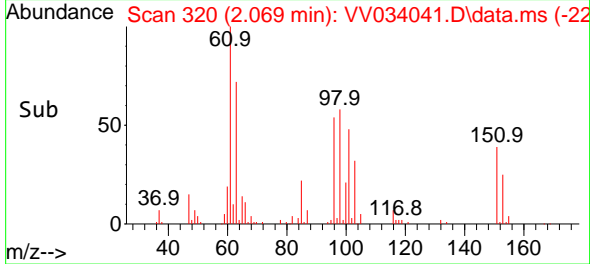


#10
 1,1,2-Trichloro-1,2,2-trifluoroethane
 Concen: 5.268 ug/L
 RT: 2.069 min Scan# 311
 Delta R.T. 0.000 min
 Lab File: VV034041.D
 Acq: 07 Feb 2024 19:19

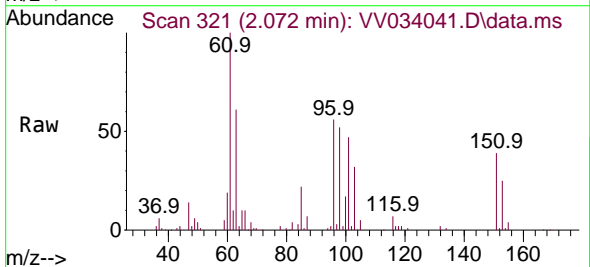
Instrument :
 MSVOA_V
 ClientSampleId :



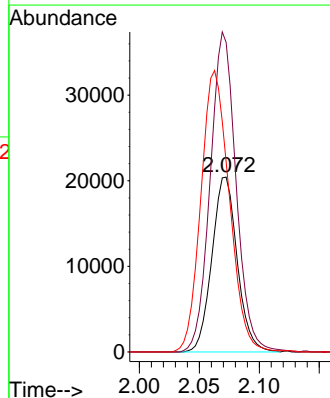
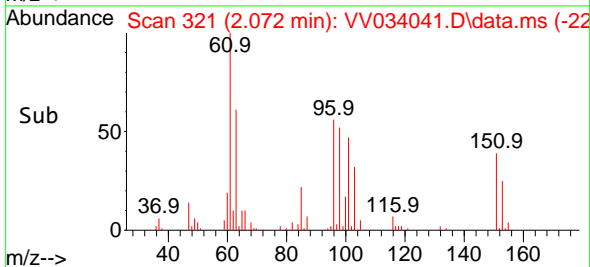
Tgt Ion:101 Resp: 30254
 Ion Ratio Lower Upper
 101 100
 85 46.6 37.1 55.7
 151 81.2 61.7 92.5

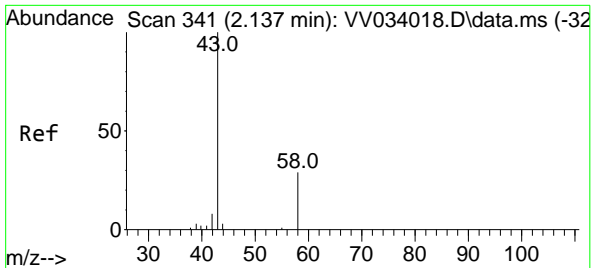


#12
 1,1-Dichloroethene
 Concen: 5.370 ug/L
 RT: 2.072 min Scan# 321
 Delta R.T. 0.003 min
 Lab File: VV034041.D
 Acq: 07 Feb 2024 19:19



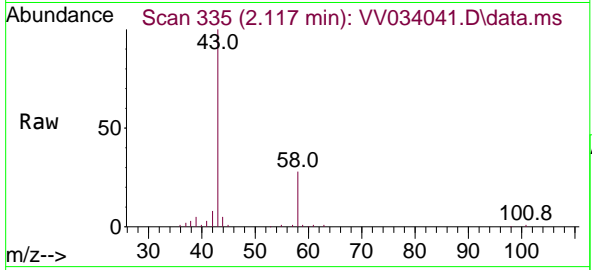
Tgt Ion: 96 Resp: 29939
 Ion Ratio Lower Upper
 96 100
 61 177.0 128.8 239.2
 63 108.8 97.9 181.9



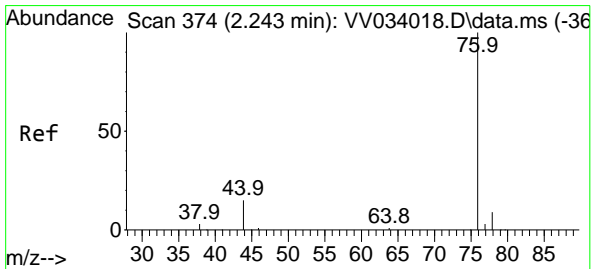
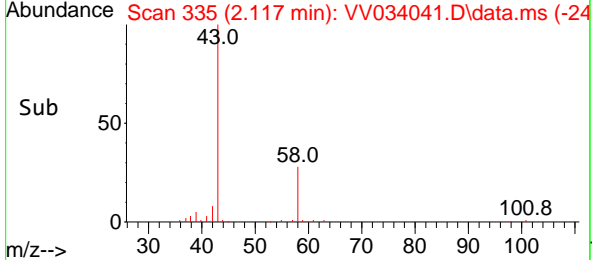
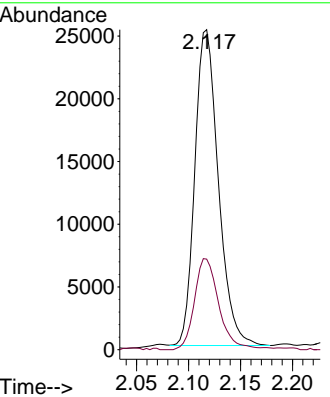


#13
 Acetone
 Concen: 50.365 ug/L
 RT: 2.117 min Scan# 311
 Delta R.T. -0.019 min
 Lab File: VV034041.D
 Acq: 07 Feb 2024 19:19

Instrument : MSVOA_V
 ClientSampleId :

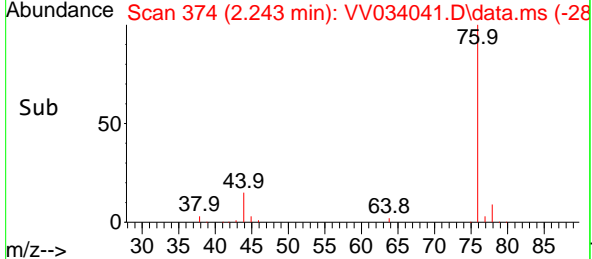
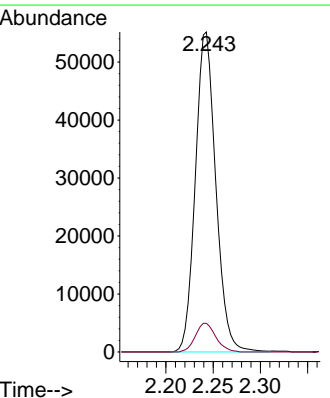
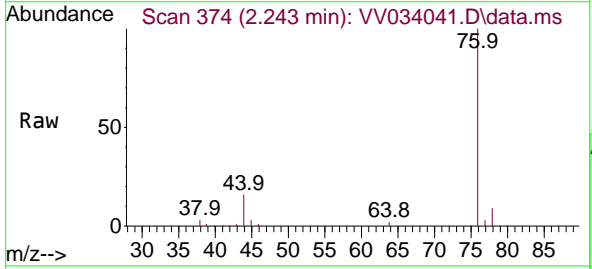


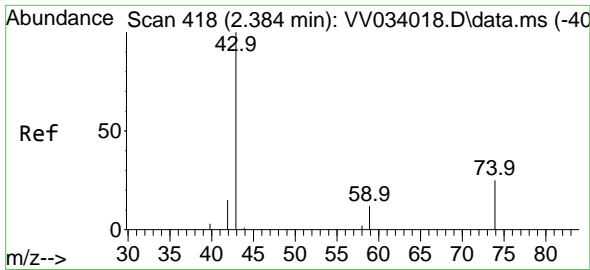
Tgt Ion: 43 Resp: 39665
 Ion Ratio Lower Upper
 43 100
 58 29.7 0.0 13.8#



#14
 Carbon disulfide
 Concen: 4.601 ug/L
 RT: 2.243 min Scan# 374
 Delta R.T. 0.000 min
 Lab File: VV034041.D
 Acq: 07 Feb 2024 19:19

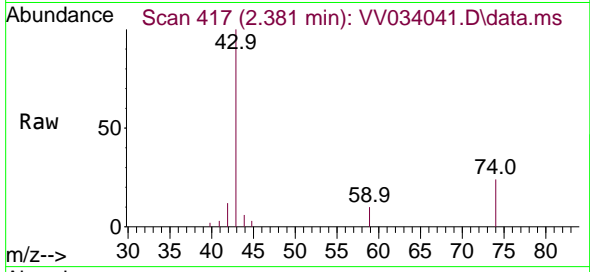
Tgt Ion: 76 Resp: 83000
 Ion Ratio Lower Upper
 76 100
 78 9.0 7.5 11.3



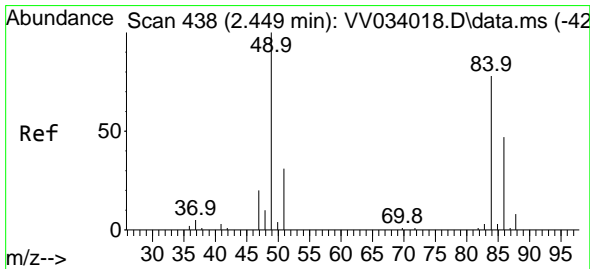
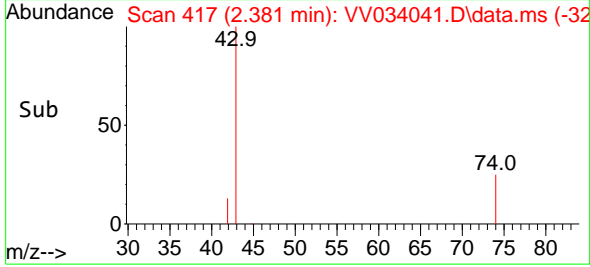
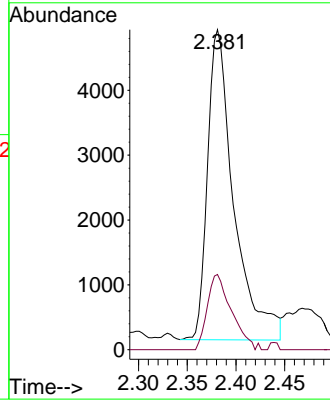


#15
 Methyl Acetate
 Concen: 4.821 ug/L
 RT: 2.381 min Scan# 417
 Delta R.T. -0.003 min
 Lab File: VV034041.D
 Acq: 07 Feb 2024 19:19

Instrument : MSVOA_V
 ClientSampleId :

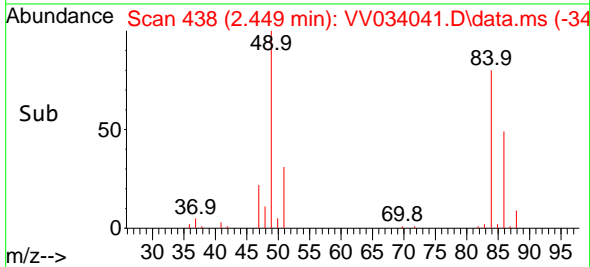
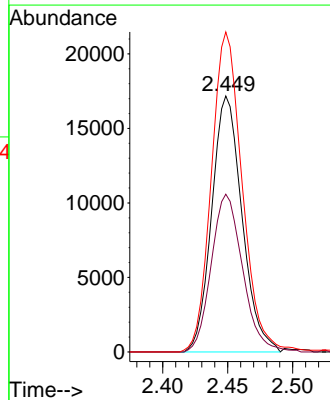
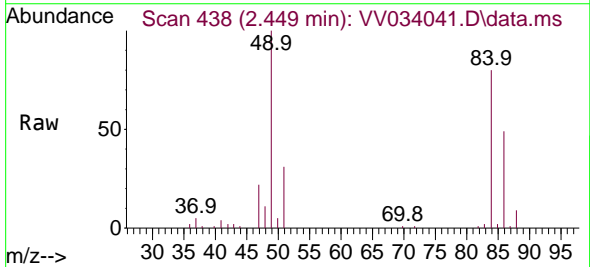


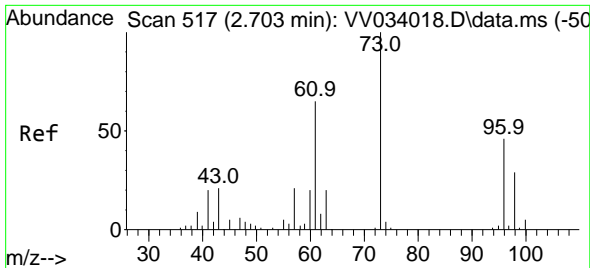
Tgt Ion: 43 Resp: 8985
 Ion Ratio Lower Upper
 43 100
 74 22.3 18.2 27.4



#16
 Methylene chloride
 Concen: 5.212 ug/L
 RT: 2.449 min Scan# 438
 Delta R.T. 0.000 min
 Lab File: VV034041.D
 Acq: 07 Feb 2024 19:19

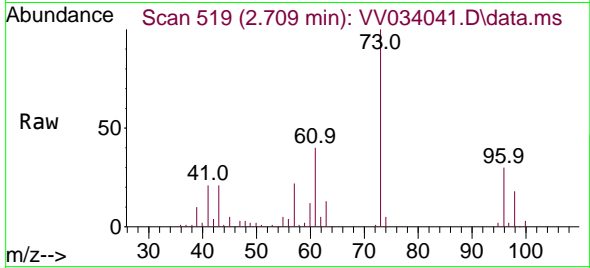
Tgt Ion: 84 Resp: 27882
 Ion Ratio Lower Upper
 84 100
 86 61.6 44.7 83.1
 49 125.0 93.7 173.9





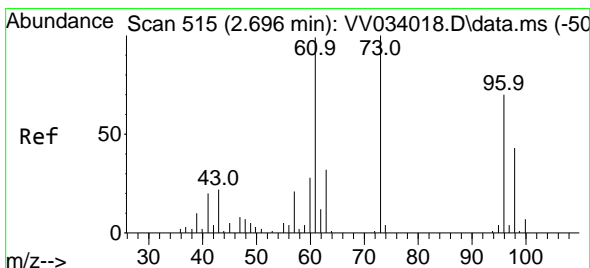
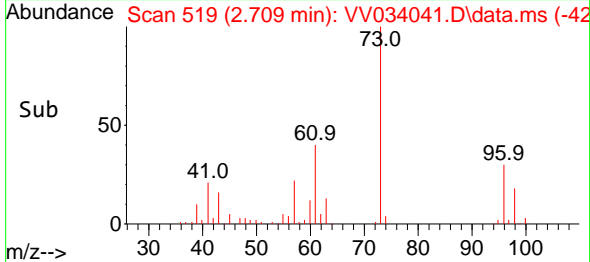
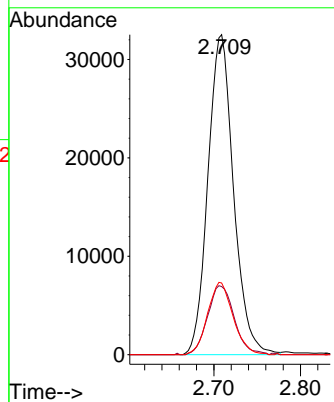
#17
 Methyl tert-butyl Ether
 Concen: 5.837 ug/L
 RT: 2.709 min Scan# 517
 Delta R.T. 0.006 min
 Lab File: VV034041.D
 Acq: 07 Feb 2024 19:19

Instrument :
 MSVOA_V
 ClientSampleId :



Tgt Ion: 73 Resp: 66865

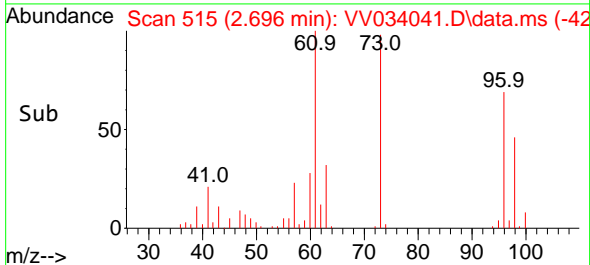
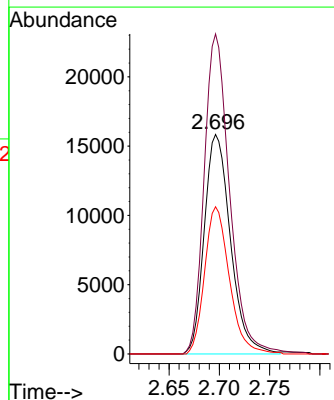
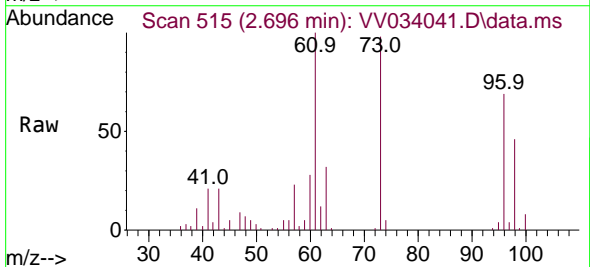
Ion	Ratio	Lower	Upper
73	100		
43	22.4	17.7	26.5
57	22.5	17.9	26.9

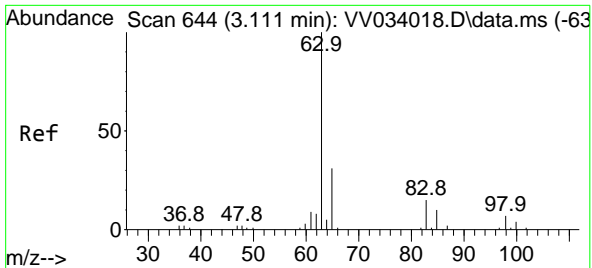


#18
 trans-1,2-Dichloroethene
 Concen: 5.067 ug/L
 RT: 2.696 min Scan# 515
 Delta R.T. 0.000 min
 Lab File: VV034041.D
 Acq: 07 Feb 2024 19:19

Tgt Ion: 96 Resp: 28775

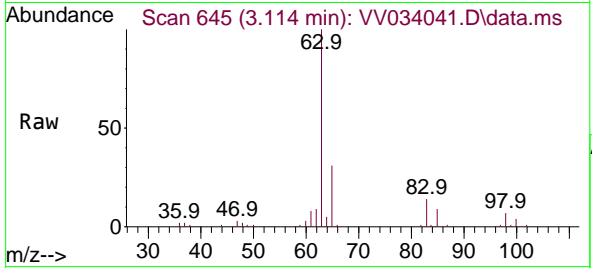
Ion	Ratio	Lower	Upper
96	100		
61	145.8	97.6	181.4
98	67.0	44.4	82.5



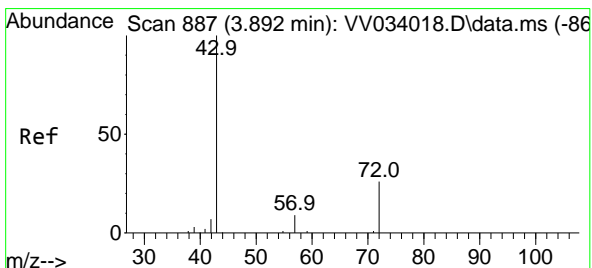
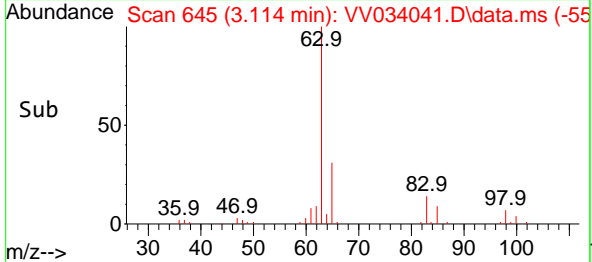
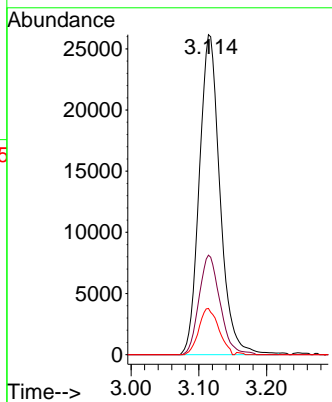


#19
 1,1-Dichloroethane
 Concen: 5.312 ug/L
 RT: 3.114 min Scan# 64
 Delta R.T. 0.003 min
 Lab File: VV034041.D
 Acq: 07 Feb 2024 19:19

Instrument :
 MSVOA_V
 ClientSampleId :

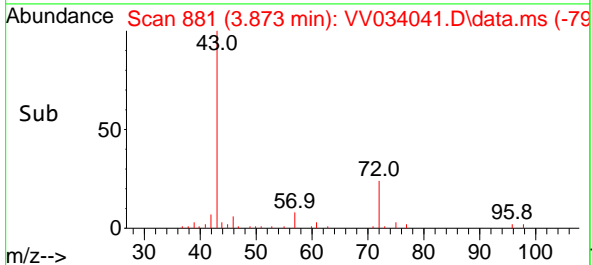
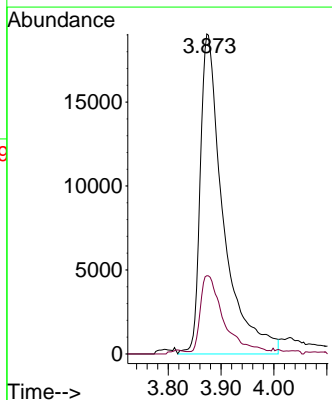
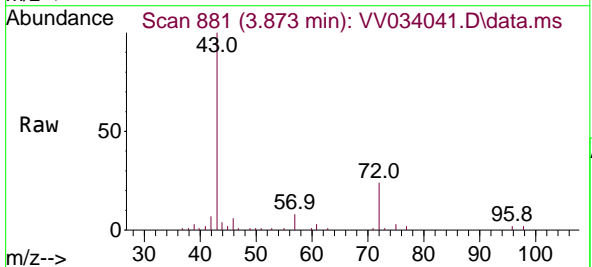


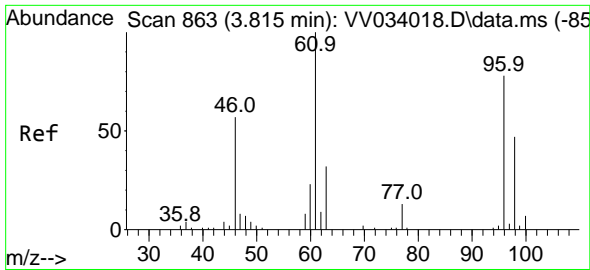
Tgt Ion: 63 Resp: 55427
 Ion Ratio Lower Upper
 63 100
 65 31.1 20.8 38.6
 83 14.4 9.4 17.4



#21
 2-Butanone
 Concen: 55.465 ug/L
 RT: 3.873 min Scan# 881
 Delta R.T. -0.019 min
 Lab File: VV034041.D
 Acq: 07 Feb 2024 19:19

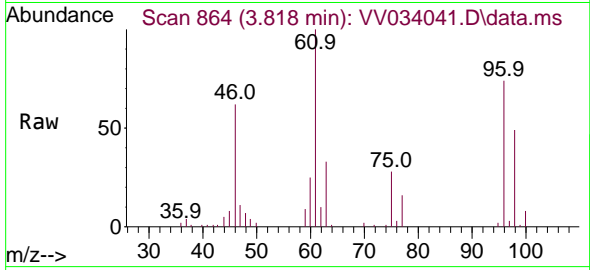
Tgt Ion: 43 Resp: 57724
 Ion Ratio Lower Upper
 43 100
 72 23.7 4.0 11.9#



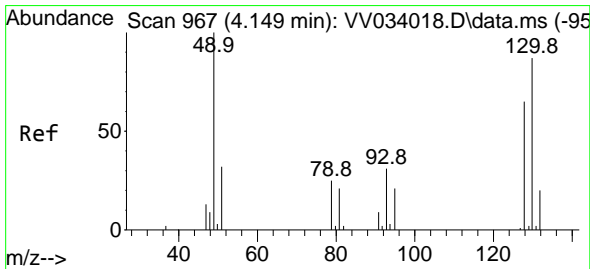
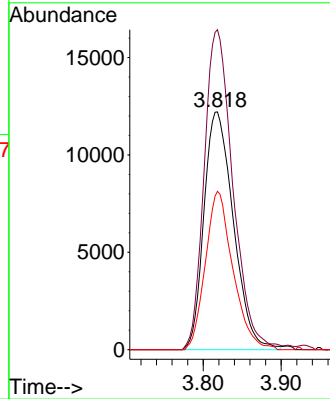
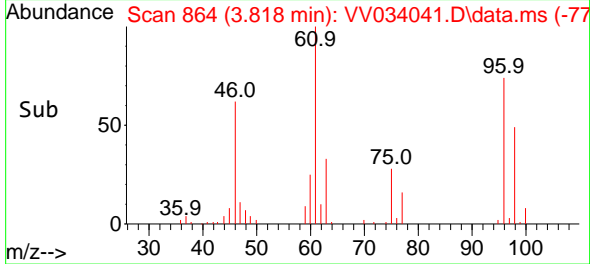


#22
 cis-1,2-Dichloroethene
 Concen: 4.977 ug/L
 RT: 3.818 min Scan# 80
 Delta R.T. 0.003 min
 Lab File: VV034041.D
 Acq: 07 Feb 2024 19:19

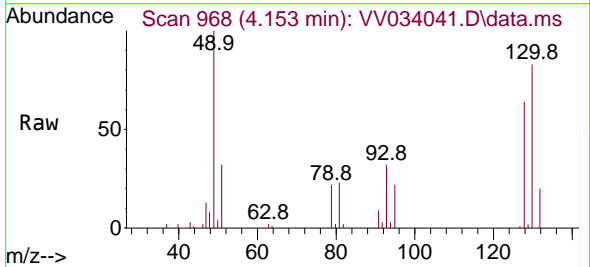
Instrument :
 MSVOA_V
 ClientSampleId :



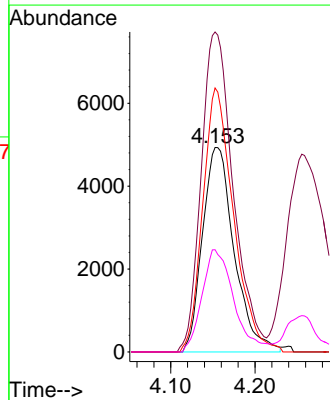
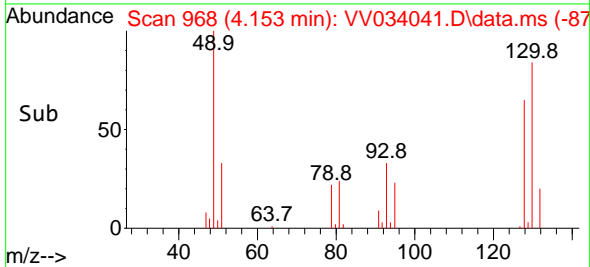
Tgt Ion: 96 Resp: 32064
 Ion Ratio Lower Upper
 96 100
 61 134.5 90.3 167.7
 98 66.6 43.2 80.2

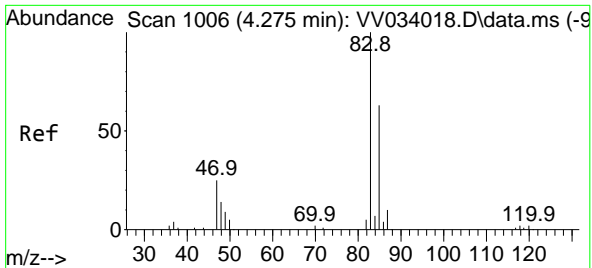


#23
 Bromochloromethane
 Concen: 5.767 ug/L
 RT: 4.153 min Scan# 968
 Delta R.T. 0.003 min
 Lab File: VV034041.D
 Acq: 07 Feb 2024 19:19



Tgt Ion: 128 Resp: 12918
 Ion Ratio Lower Upper
 128 100
 49 156.5 120.5 223.7
 130 129.1 93.4 173.4
 51 50.0 44.2 66.2

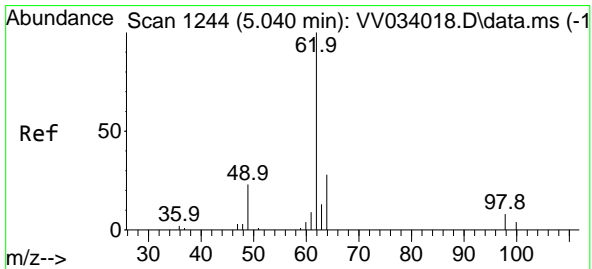
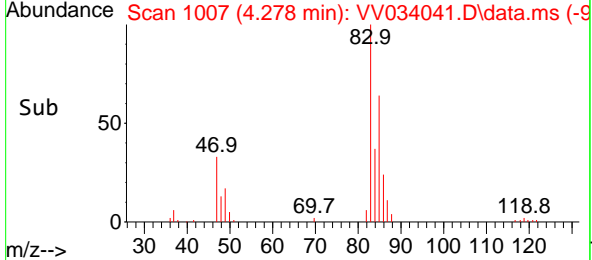
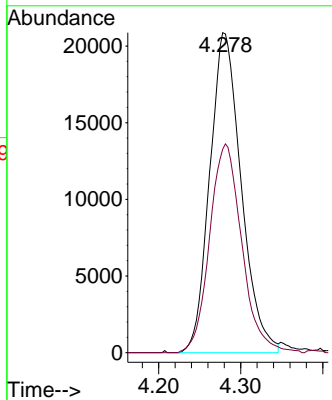
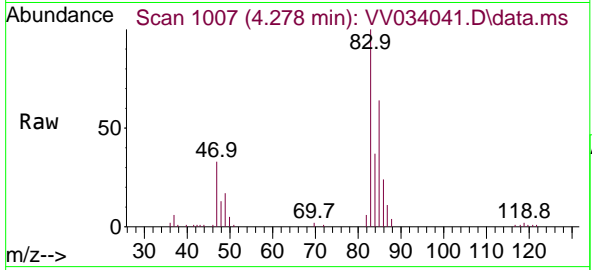




#25
 Chloroform
 Concen: 5.284 ug/L
 RT: 4.278 min Scan# 1006
 Delta R.T. 0.003 min
 Lab File: VV034041.D
 Acq: 07 Feb 2024 19:19

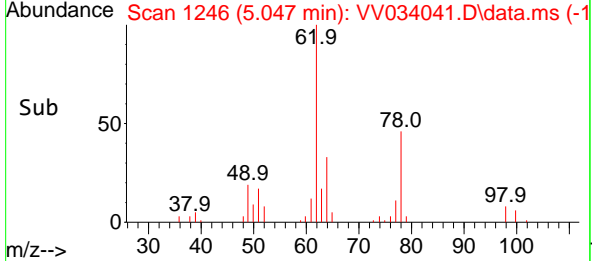
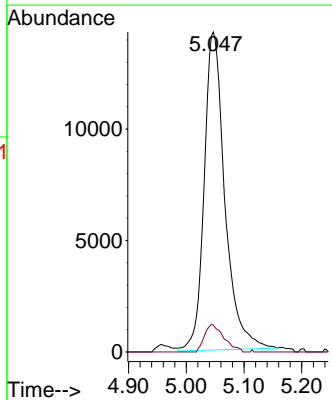
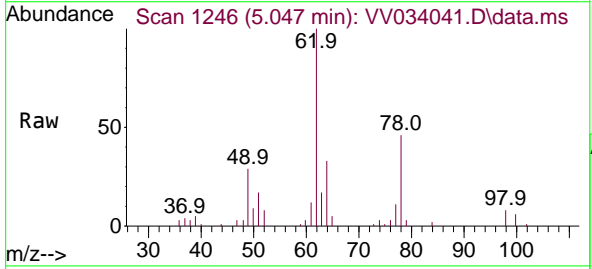
Instrument : MSVOA_V
 ClientSampleId :

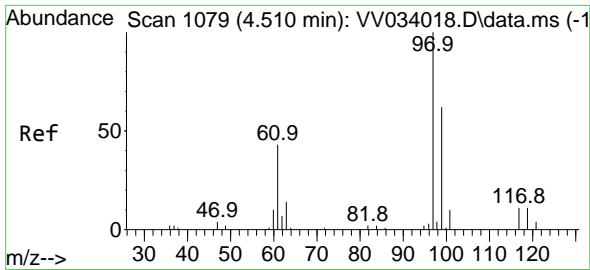
Tgt Ion: 83 Resp: 55733
 Ion Ratio Lower Upper
 83 100
 85 63.5 47.5 88.1



#27
 1,2-Dichloroethane
 Concen: 5.901 ug/L
 RT: 5.047 min Scan# 1246
 Delta R.T. 0.006 min
 Lab File: VV034041.D
 Acq: 07 Feb 2024 19:19

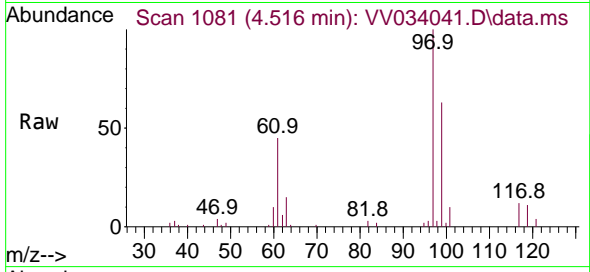
Tgt Ion: 62 Resp: 35639
 Ion Ratio Lower Upper
 62 100
 98 8.4 6.9 10.3



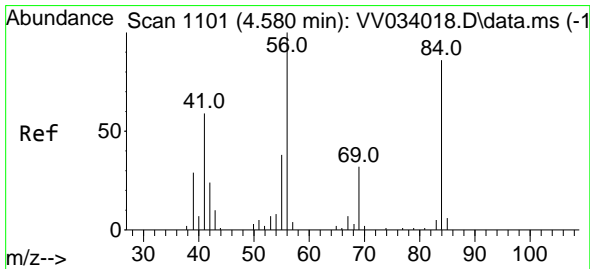
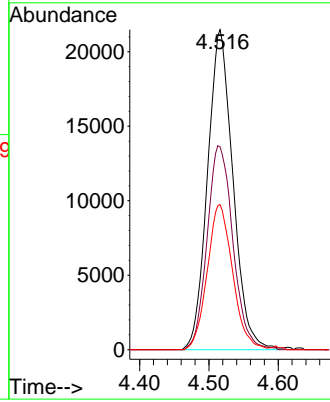
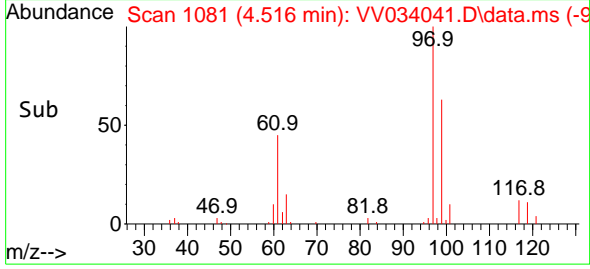


#29
 1,1,1-Trichloroethane
 Concen: 5.400 ug/L
 RT: 4.516 min Scan# 1079
 Delta R.T. 0.006 min
 Lab File: VV034041.D
 Acq: 07 Feb 2024 19:19

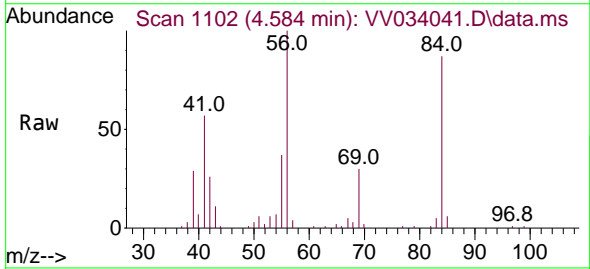
Instrument : MSVOA_V
 ClientSampleId :



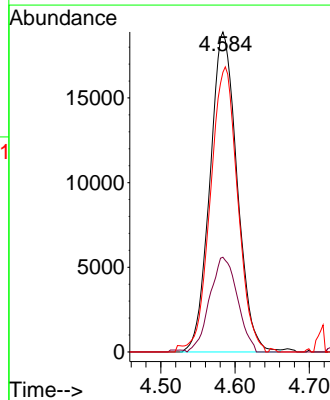
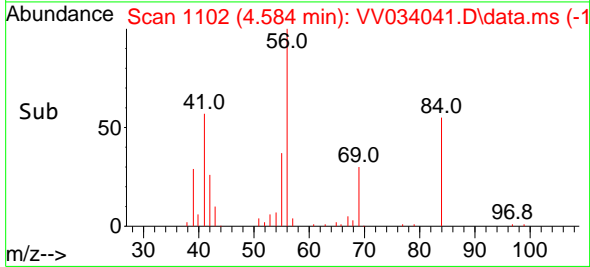
Tgt Ion: 97 Resp: 54680
 Ion Ratio Lower Upper
 97 100
 99 64.8 50.6 75.8
 61 45.3 36.8 55.2

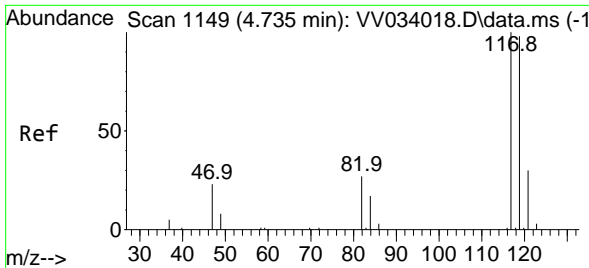


#30
 Cyclohexane
 Concen: 4.867 ug/L
 RT: 4.584 min Scan# 1102
 Delta R.T. 0.003 min
 Lab File: VV034041.D
 Acq: 07 Feb 2024 19:19



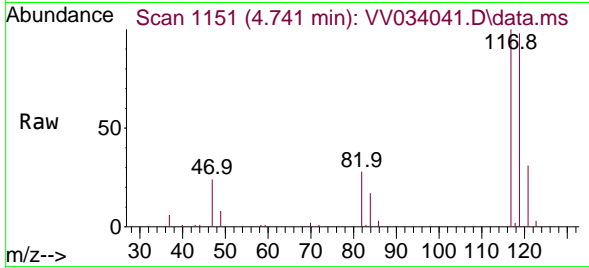
Tgt Ion: 56 Resp: 47929
 Ion Ratio Lower Upper
 56 100
 69 30.2 24.2 36.2
 84 89.9 70.0 105.0



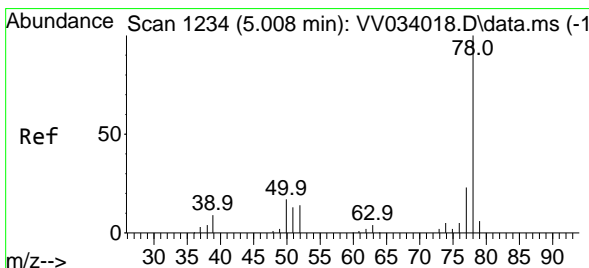
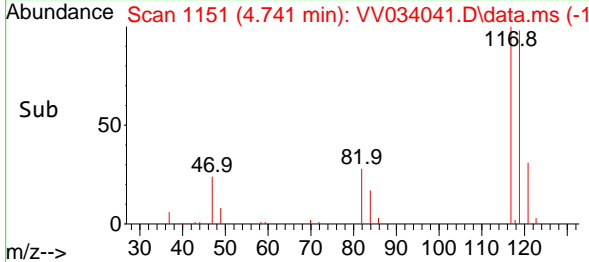
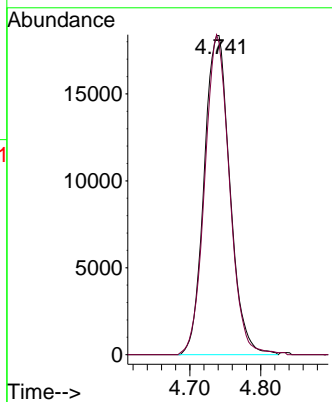


#31
 Carbon tetrachloride
 Concen: 5.238 ug/L
 RT: 4.741 min Scan# 1149
 Delta R.T. 0.006 min
 Lab File: VV034041.D
 Acq: 07 Feb 2024 19:19

Instrument : MSVOA_V
 ClientSampleId :

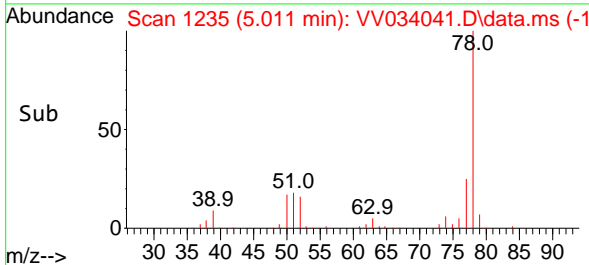
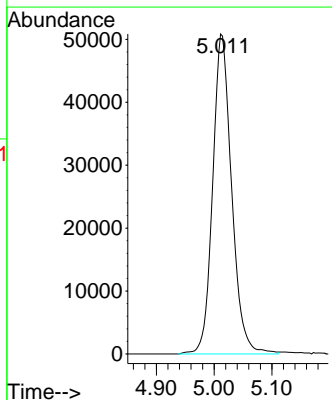
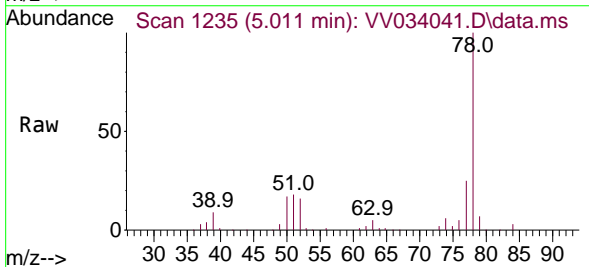


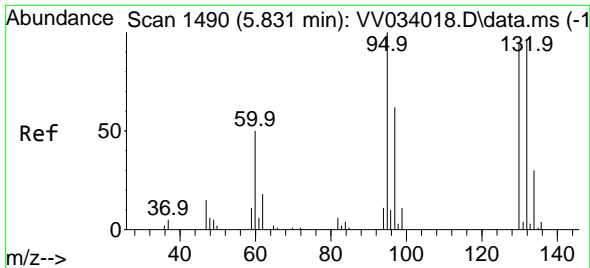
Tgt Ion:117 Resp: 46415
 Ion Ratio Lower Upper
 117 100
 119 96.5 76.1 114.1



#33
 Benzene
 Concen: 5.122 ug/L
 RT: 5.011 min Scan# 1235
 Delta R.T. 0.003 min
 Lab File: VV034041.D
 Acq: 07 Feb 2024 19:19

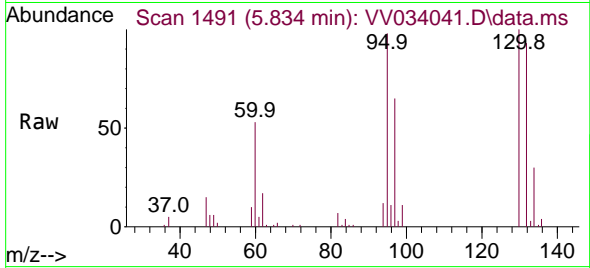
Tgt Ion: 78 Resp: 115878



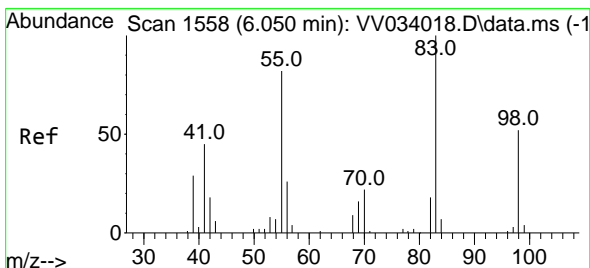
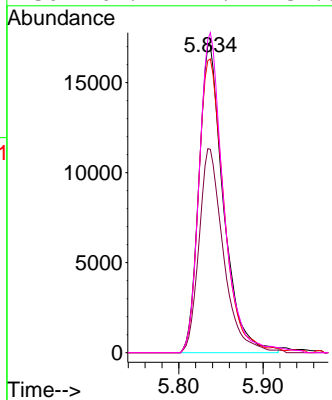
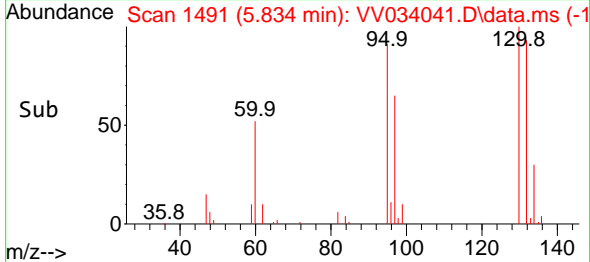


#34
 Trichloroethene
 Concen: 5.305 ug/L
 RT: 5.834 min Scan# 1491
 Delta R.T. 0.003 min
 Lab File: VV034041.D
 Acq: 07 Feb 2024 19:19

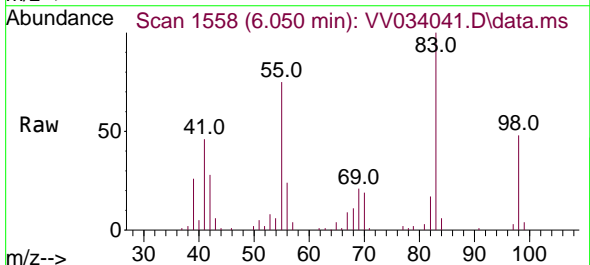
Instrument : MSVOA_V
 ClientSampleId :



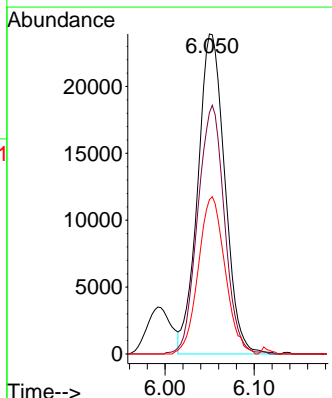
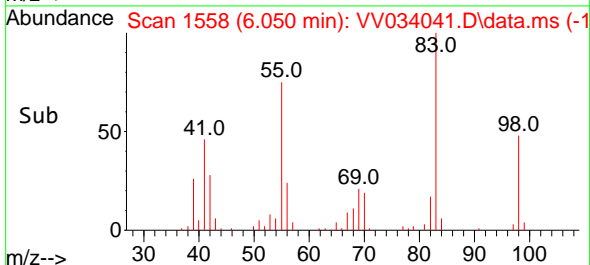
Tgt Ion: 95 Resp: 34731
 Ion Ratio Lower Upper
 95 100
 97 66.5 45.1 83.7
 132 95.1 66.0 122.6
 130 101.9 72.2 134.0

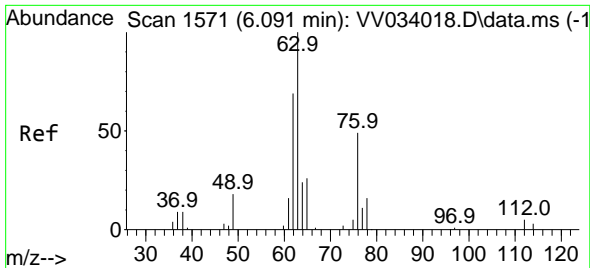


#35
 Methylcyclohexane
 Concen: 4.911 ug/L
 RT: 6.050 min Scan# 1558
 Delta R.T. 0.000 min
 Lab File: VV034041.D
 Acq: 07 Feb 2024 19:19



Tgt Ion: 83 Resp: 50466
 Ion Ratio Lower Upper
 83 100
 55 77.0 63.5 95.3
 98 48.6 39.0 58.4

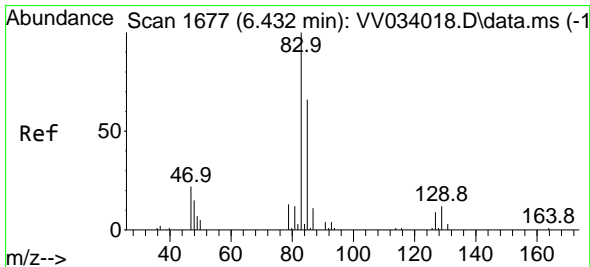
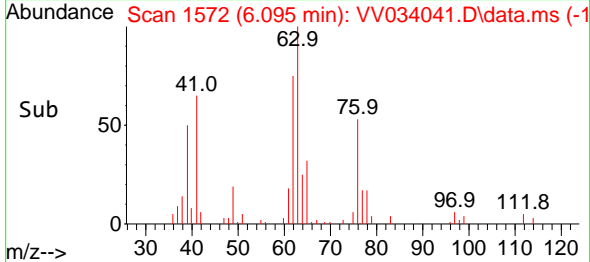
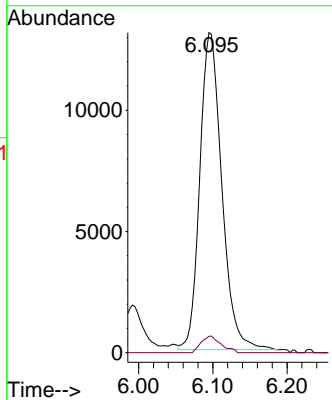
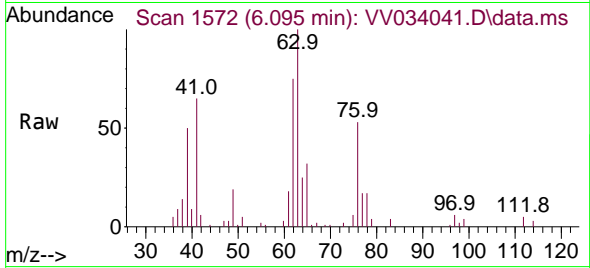




#37
 1,2-Dichloropropane
 Concen: 4.916 ug/L
 RT: 6.095 min Scan# 11
 Delta R.T. 0.003 min
 Lab File: VV034041.D
 Acq: 07 Feb 2024 19:19

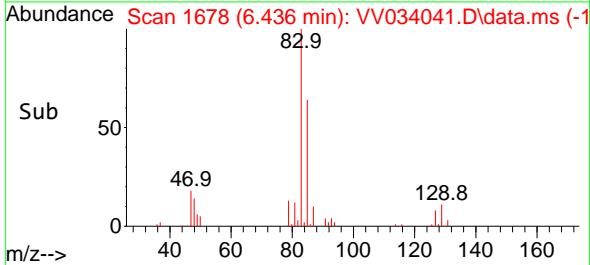
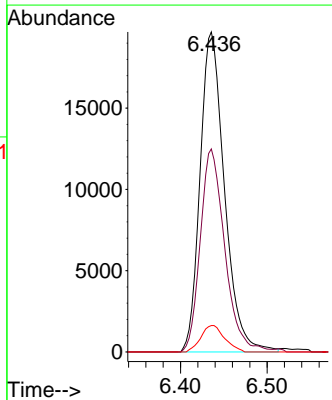
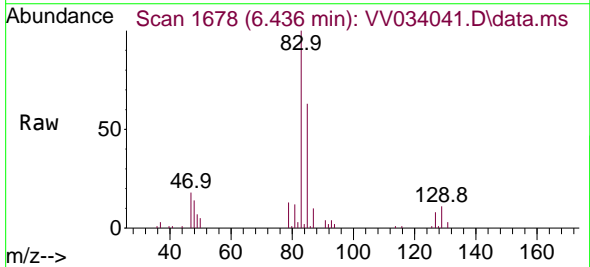
Instrument :
 MSVOA_V
 ClientSampleId :

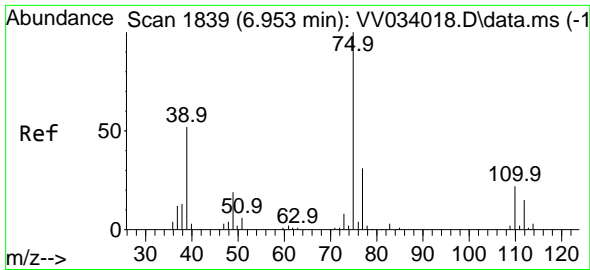
Tgt Ion: 63 Resp: 26938
 Ion Ratio Lower Upper
 63 100
 112 4.7 3.4 5.0



#38
 Bromodichloromethane
 Concen: 5.360 ug/L
 RT: 6.436 min Scan# 1678
 Delta R.T. 0.003 min
 Lab File: VV034041.D
 Acq: 07 Feb 2024 19:19

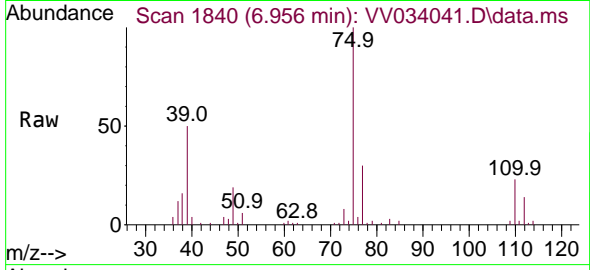
Tgt Ion: 83 Resp: 38555
 Ion Ratio Lower Upper
 83 100
 85 63.4 45.4 84.2
 127 8.2 6.5 9.7



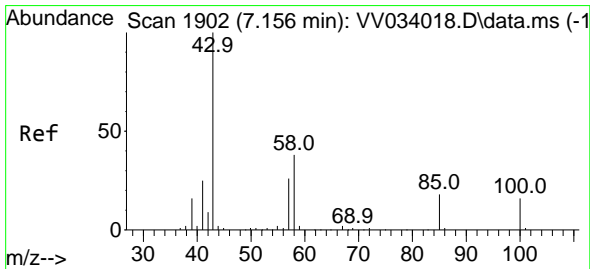
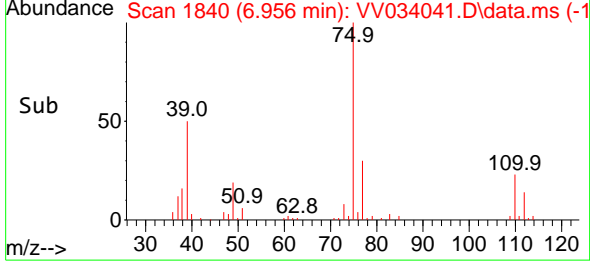
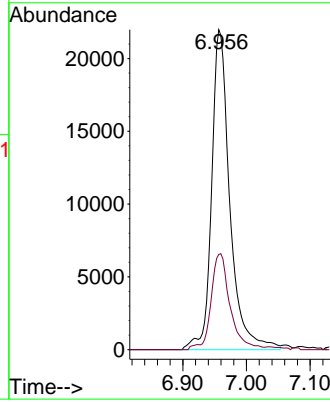


#39
 cis-1,3-Dichloropropene
 Concen: 5.247 ug/L
 RT: 6.956 min Scan# 1839
 Delta R.T. 0.003 min
 Lab File: VV034041.D
 Acq: 07 Feb 2024 19:19

Instrument : MSVOA_V
 ClientSampleId :

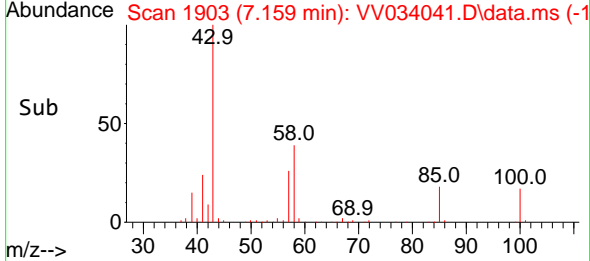
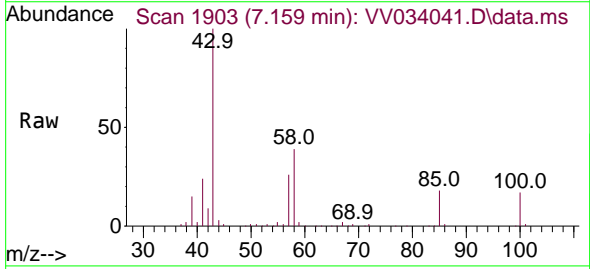
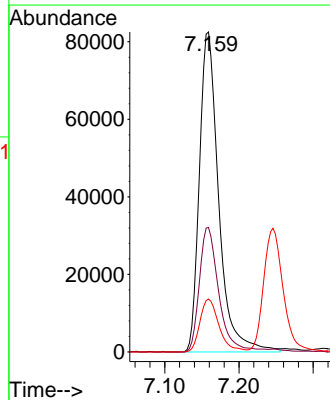


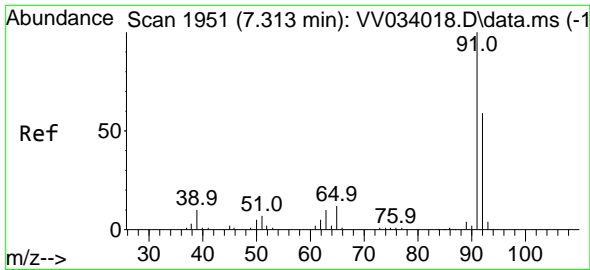
Tgt Ion: 75 Resp: 43745
 Ion Ratio Lower Upper
 75 100
 77 29.7 22.9 42.5



#40
 4-Methyl-2-pentanone
 Concen: 56.866 ug/L
 RT: 7.159 min Scan# 1903
 Delta R.T. 0.003 min
 Lab File: VV034041.D
 Acq: 07 Feb 2024 19:19

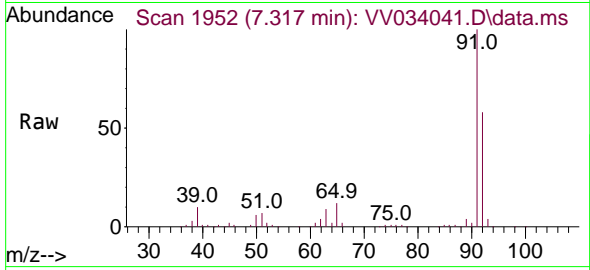
Tgt Ion: 43 Resp: 149219
 Ion Ratio Lower Upper
 43 100
 58 39.2 30.2 45.2
 100 16.4 12.1 18.1



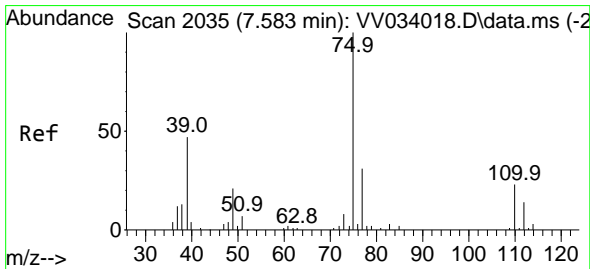
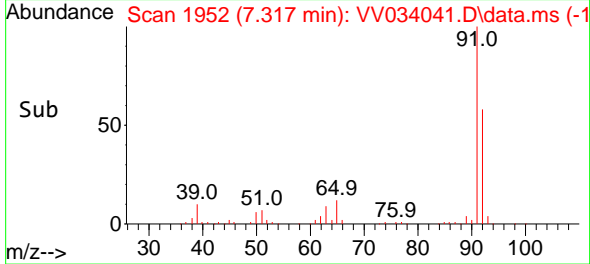
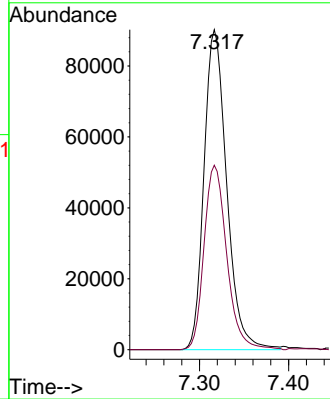


#42
 Toluene
 Concen: 6.592 ug/L
 RT: 7.317 min Scan# 1951
 Delta R.T. 0.003 min
 Lab File: VV034041.D
 Acq: 07 Feb 2024 19:19

Instrument :
 MSVOA_V
 ClientSampleId :

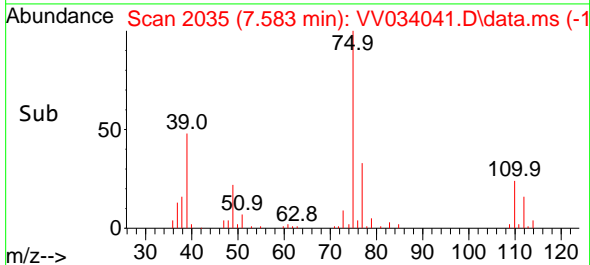
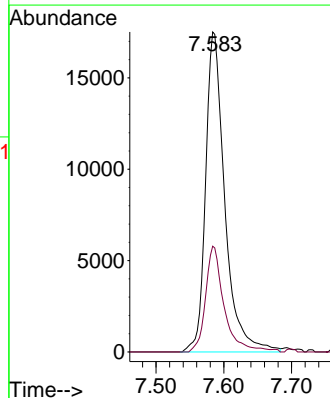
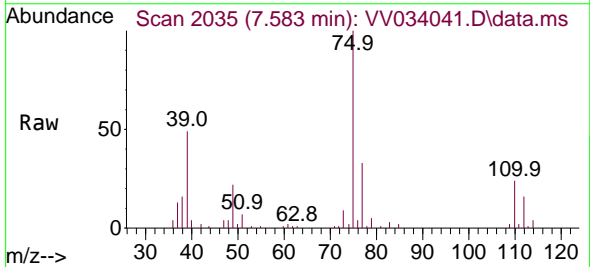


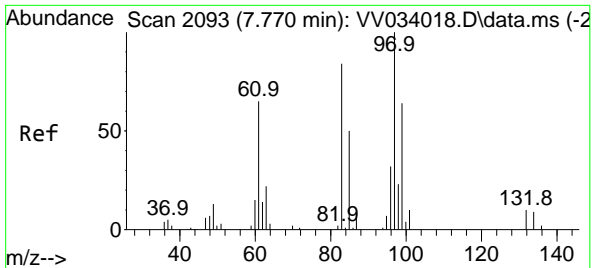
Tgt Ion: 91 Resp: 159381
 Ion Ratio Lower Upper
 91 100
 92 57.7 42.1 78.3



#44
 trans-1,3-Dichloropropene
 Concen: 5.383 ug/L
 RT: 7.583 min Scan# 2035
 Delta R.T. 0.000 min
 Lab File: VV034041.D
 Acq: 07 Feb 2024 19:19

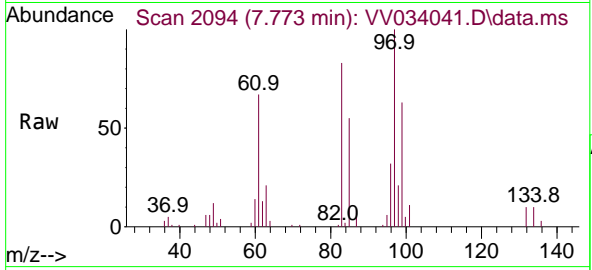
Tgt Ion: 75 Resp: 34460
 Ion Ratio Lower Upper
 75 100
 77 33.0 22.2 41.2





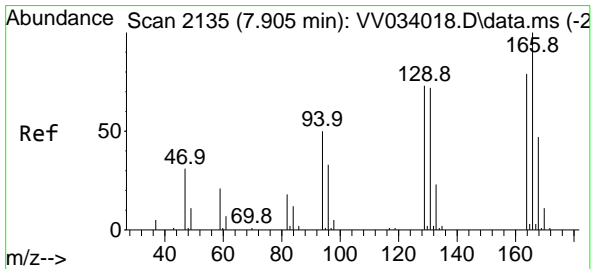
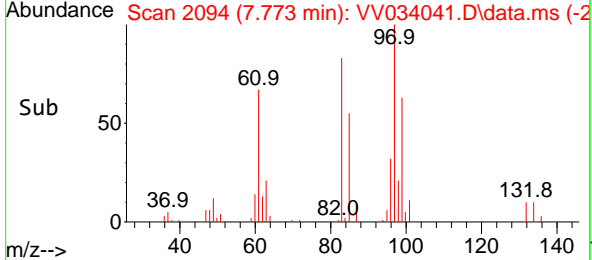
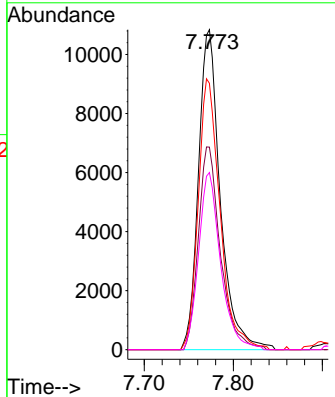
#45
 1,1,2-Trichloroethane
 Concen: 5.478 ug/L
 RT: 7.773 min Scan# 2093
 Delta R.T. 0.003 min
 Lab File: VV034041.D
 Acq: 07 Feb 2024 19:19

Instrument : MSVOA_V
 ClientSampleId :



Tgt Ion: 97 Resp: 18537

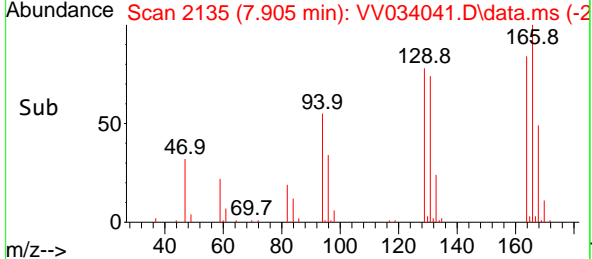
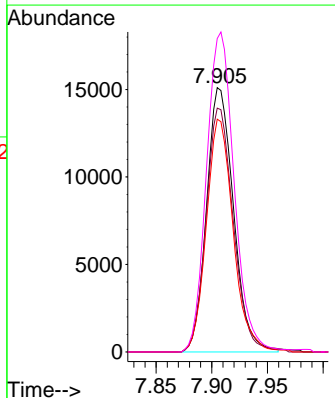
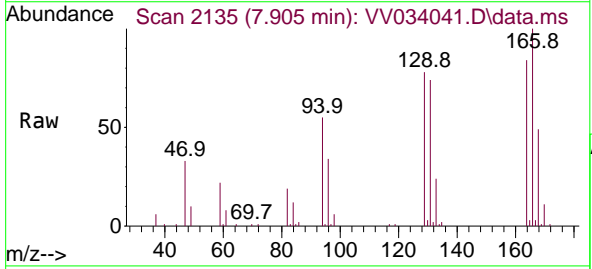
Ion	Ratio	Lower	Upper
97	100		
99	63.3	45.6	84.6
83	83.2	62.3	115.7
85	55.3	38.5	71.5

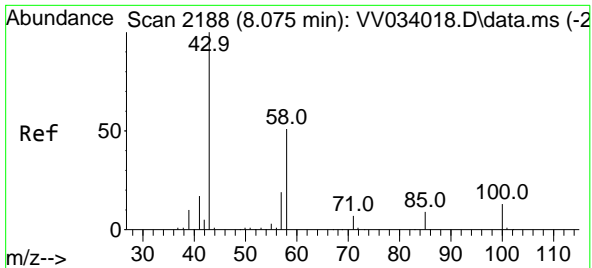


#47
 Tetrachloroethene
 Concen: 4.787 ug/L
 RT: 7.905 min Scan# 2135
 Delta R.T. 0.000 min
 Lab File: VV034041.D
 Acq: 07 Feb 2024 19:19

Tgt Ion: 164 Resp: 25465

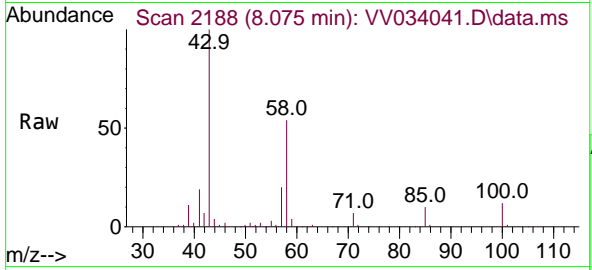
Ion	Ratio	Lower	Upper
164	100		
129	92.2	67.8	125.8
131	88.0	63.0	117.0
166	118.5	92.6	172.0





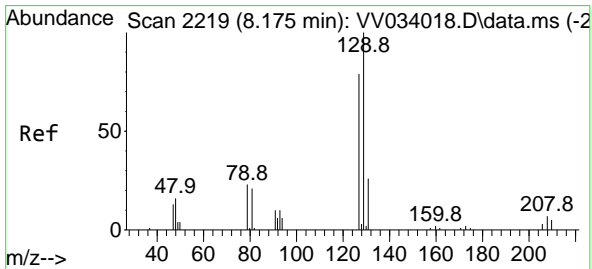
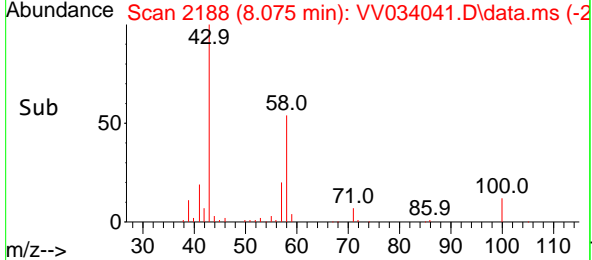
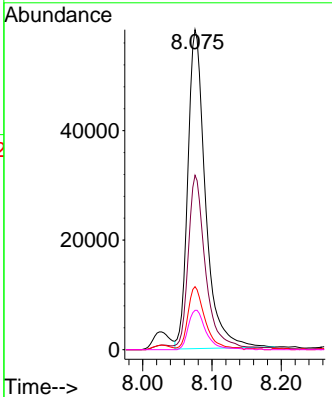
#48
 2-Hexanone
 Concen: 55.852 ug/L
 RT: 8.075 min Scan# 2188
 Delta R.T. 0.000 min
 Lab File: VV034041.D
 Acq: 07 Feb 2024 19:19

Instrument : MSVOA_V
 ClientSampleId :

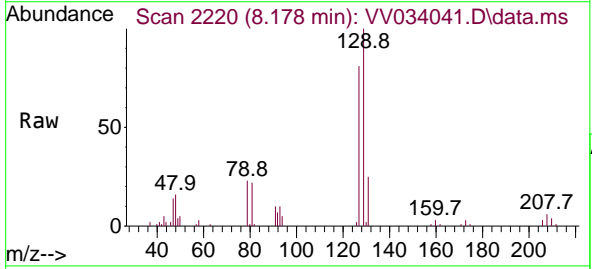


Tgt Ion: 43 Resp: 103309

Ion	Ratio	Lower	Upper
43	100		
58	53.6	42.6	64.0
57	19.5	15.5	23.3
100	12.5	10.1	15.1

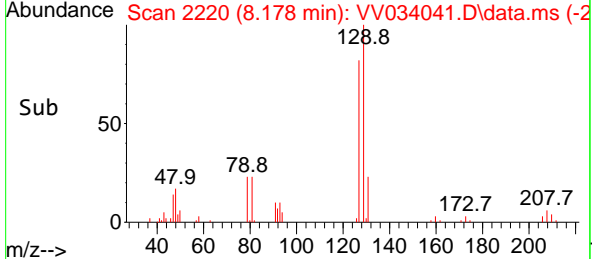
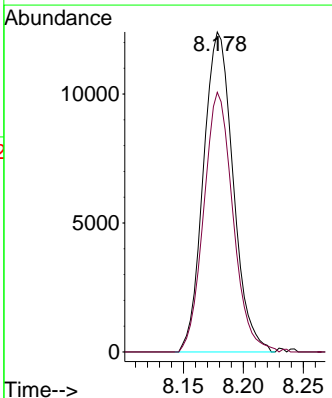


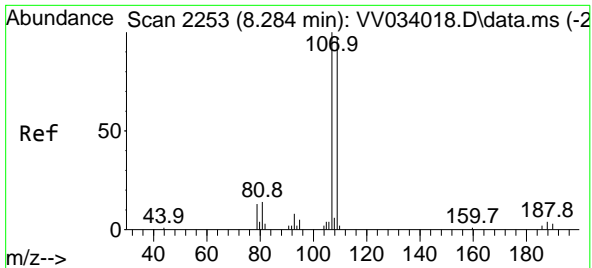
#49
 Dibromochloromethane
 Concen: 5.324 ug/L
 RT: 8.178 min Scan# 2220
 Delta R.T. 0.003 min
 Lab File: VV034041.D
 Acq: 07 Feb 2024 19:19



Tgt Ion: 129 Resp: 21406

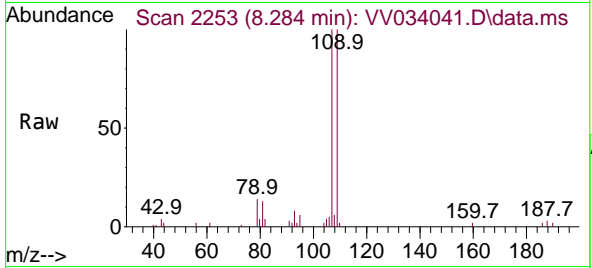
Ion	Ratio	Lower	Upper
129	100		
127	81.2	53.5	99.5





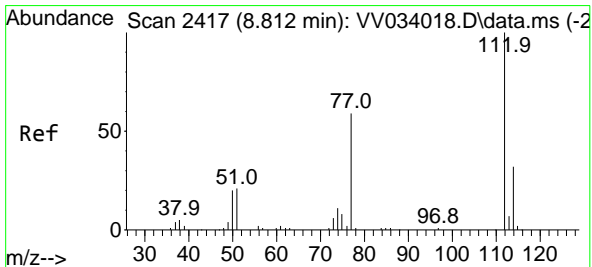
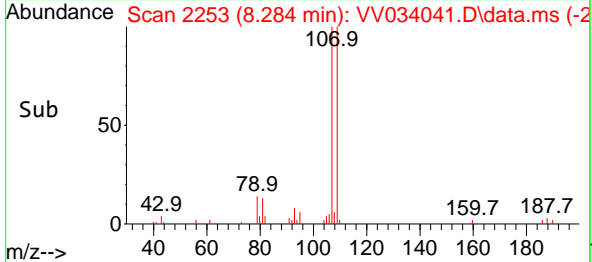
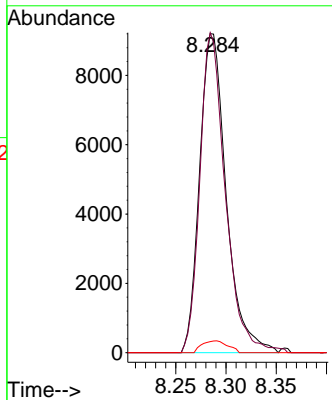
#50
 1,2-Dibromoethane
 Concen: 5.589 ug/L
 RT: 8.284 min Scan# 21
 Delta R.T. 0.000 min
 Lab File: VV034041.D
 Acq: 07 Feb 2024 19:19

Instrument :
 MSVOA_V
 ClientSampleId :



Tgt Ion:107 Resp: 16973

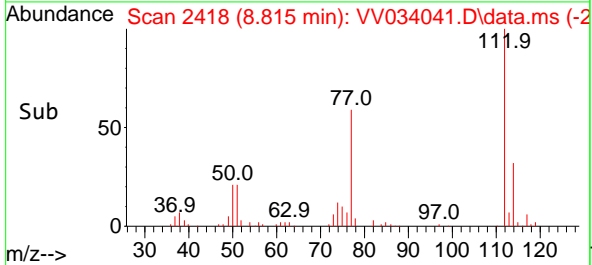
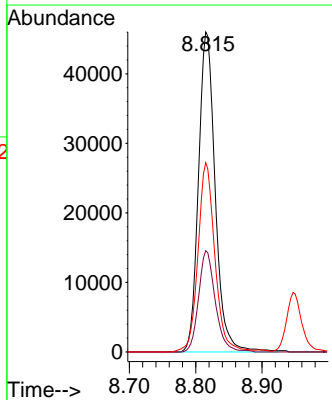
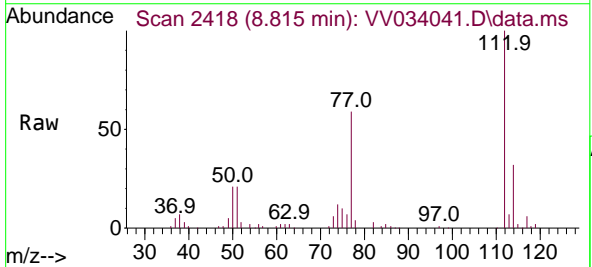
Ion	Ratio	Lower	Upper
107	100		
109	100.3	64.5	119.9
188	3.4	2.6	4.0

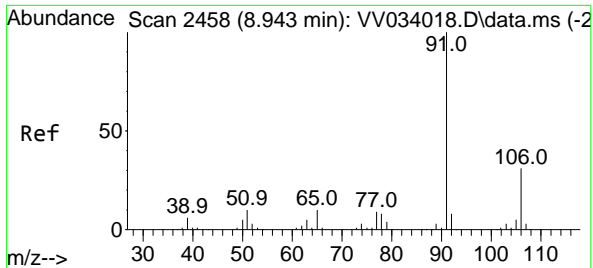


#51
 Chlorobenzene
 Concen: 5.274 ug/L
 RT: 8.815 min Scan# 2418
 Delta R.T. 0.003 min
 Lab File: VV034041.D
 Acq: 07 Feb 2024 19:19

Tgt Ion:112 Resp: 80624

Ion	Ratio	Lower	Upper
112	100		
114	31.6	22.5	41.7
77	59.1	48.1	72.1

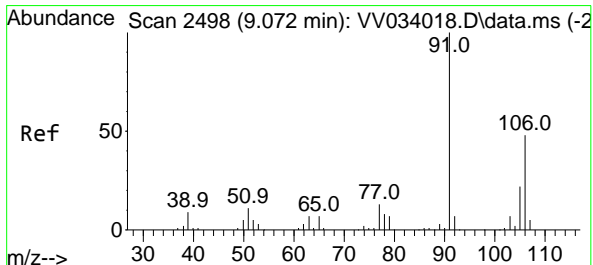
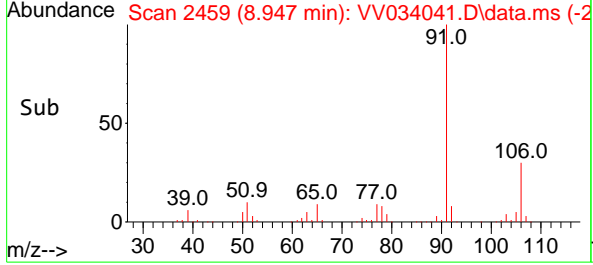
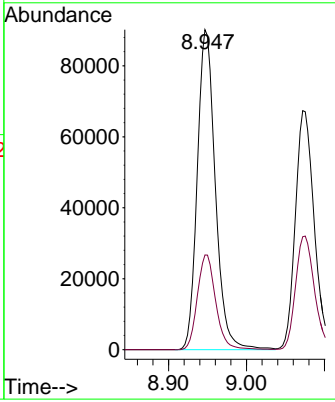
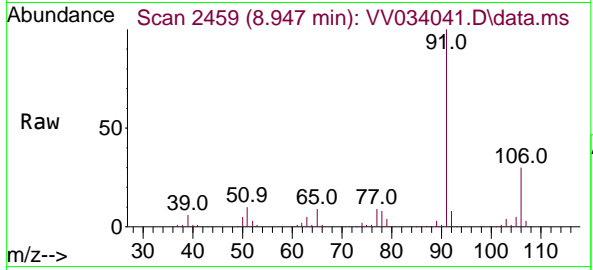




#52
 Ethylbenzene
 Concen: 5.217 ug/L
 RT: 8.947 min Scan# 2458
 Delta R.T. 0.003 min
 Lab File: VV034041.D
 Acq: 07 Feb 2024 19:19

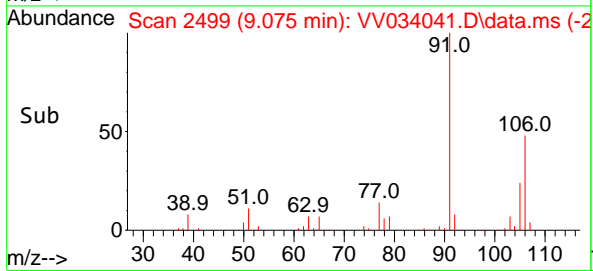
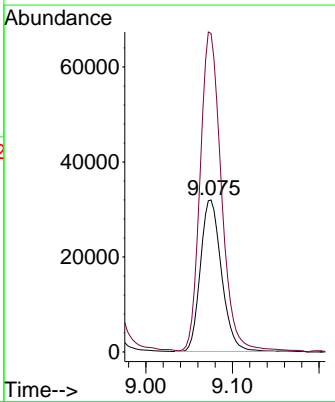
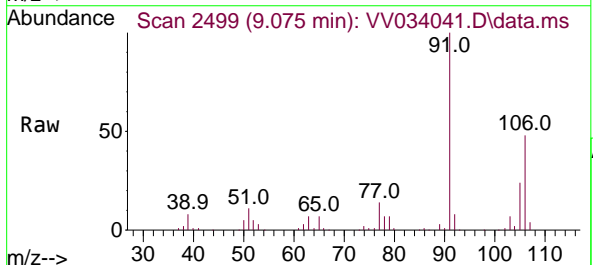
Instrument : MSVOA_V
 ClientSampleId :

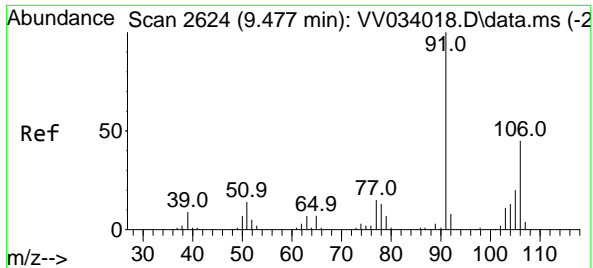
Tgt Ion: 91 Resp: 145193
 Ion Ratio Lower Upper
 91 100
 106 29.6 21.4 39.8



#53
 m,p-Xylene
 Concen: 5.132 ug/L
 RT: 9.075 min Scan# 2499
 Delta R.T. 0.003 min
 Lab File: VV034041.D
 Acq: 07 Feb 2024 19:19

Tgt Ion: 106 Resp: 53977
 Ion Ratio Lower Upper
 106 100
 91 209.5 147.5 273.9

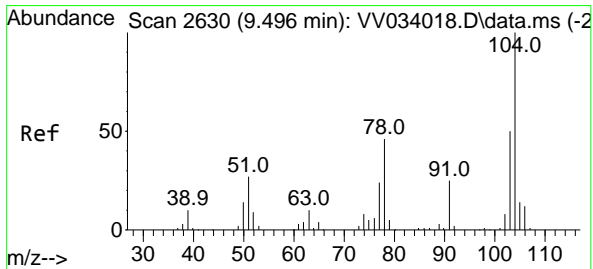
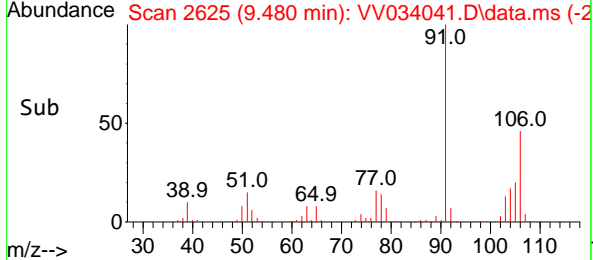
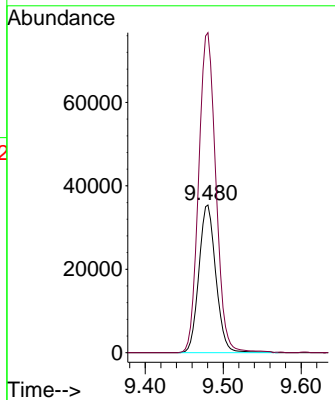
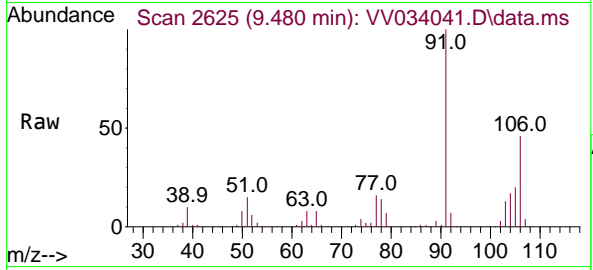




#54
 o-Xylene
 Concen: 5.282 ug/L
 RT: 9.480 min Scan# 2625
 Delta R.T. 0.003 min
 Lab File: VV034041.D
 Acq: 07 Feb 2024 19:19

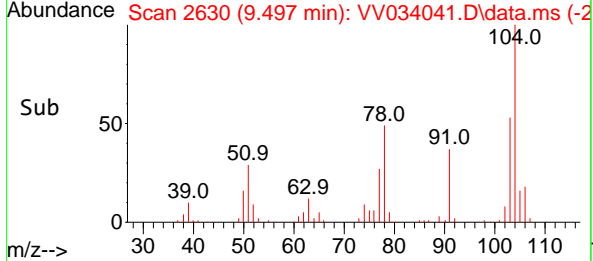
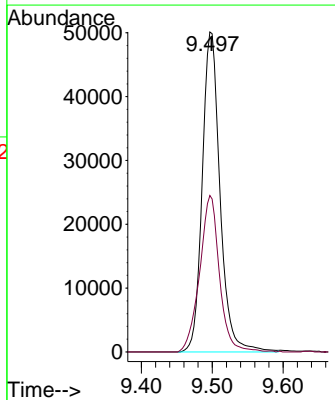
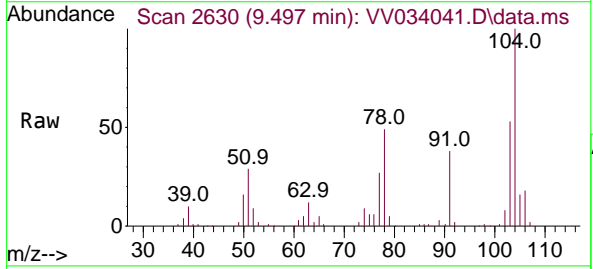
Instrument : MSVOA_V
 ClientSampleId :

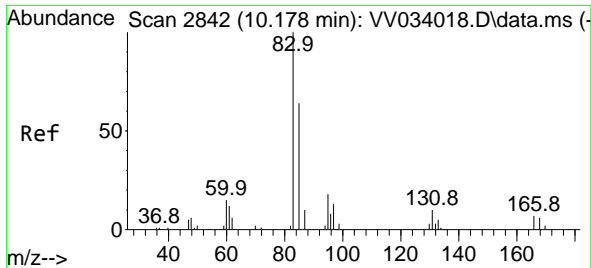
Tgt Ion:106 Resp: 53570
 Ion Ratio Lower Upper
 106 100
 91 216.6 156.2 290.0



#55
 Styrene
 Concen: 5.388 ug/L
 RT: 9.497 min Scan# 2630
 Delta R.T. 0.000 min
 Lab File: VV034041.D
 Acq: 07 Feb 2024 19:19

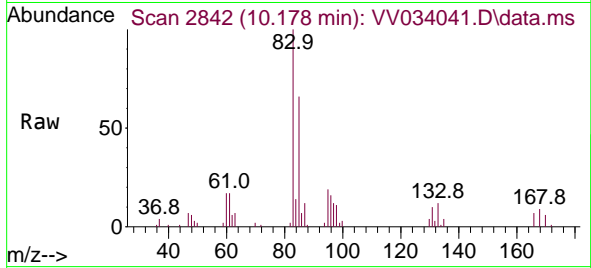
Tgt Ion:104 Resp: 87495
 Ion Ratio Lower Upper
 104 100
 78 48.9 32.9 61.1





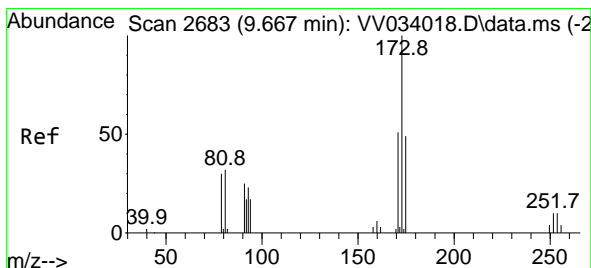
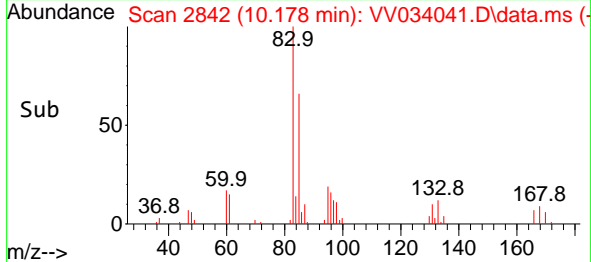
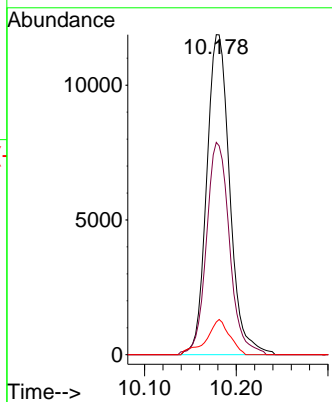
#57
 1,1,2,2-Tetrachloroethane
 Concen: 5.805 ug/L
 RT: 10.178 min Scan# 2842
 Delta R.T. 0.000 min
 Lab File: VV034041.D
 Acq: 07 Feb 2024 19:19

Instrument : MSVOA_V
 ClientSampleId :



Tgt Ion: 83 Resp: 20730

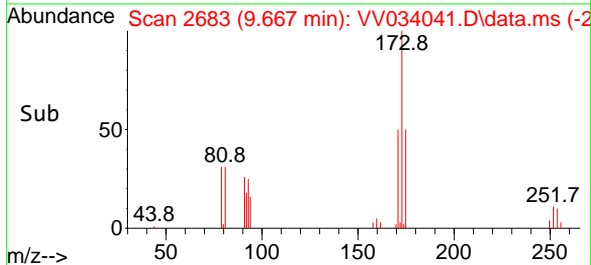
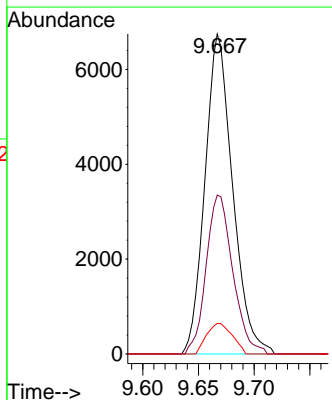
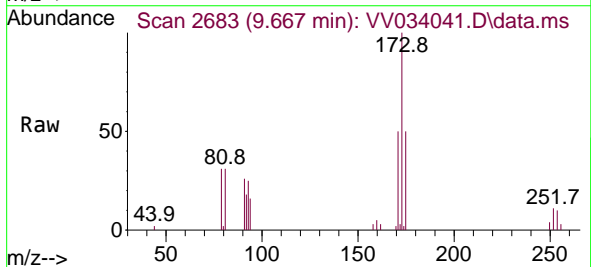
Ion	Ratio	Lower	Upper
83	100		
85	66.3	46.5	86.3
131	10.2	8.4	12.6

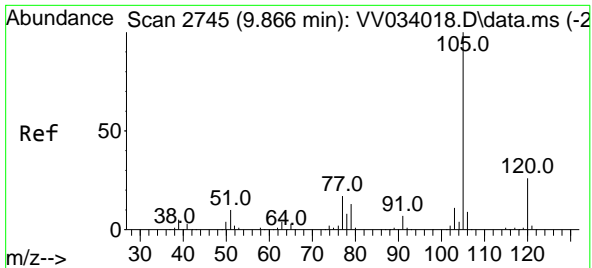


#59
 Bromoform
 Concen: 5.306 ug/L
 RT: 9.667 min Scan# 2683
 Delta R.T. 0.000 min
 Lab File: VV034041.D
 Acq: 07 Feb 2024 19:19

Tgt Ion: 173 Resp: 11661

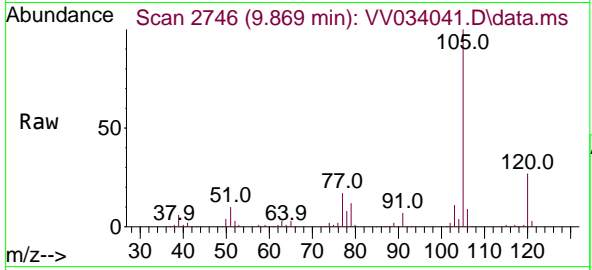
Ion	Ratio	Lower	Upper
173	100		
175	47.9	38.6	57.8
254	8.8	7.2	10.8





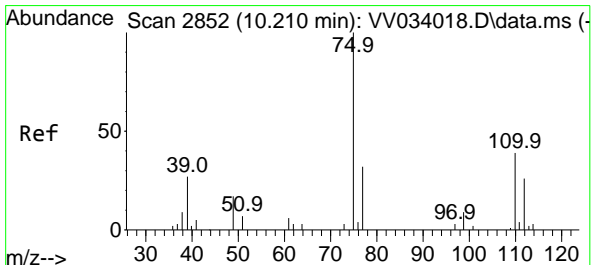
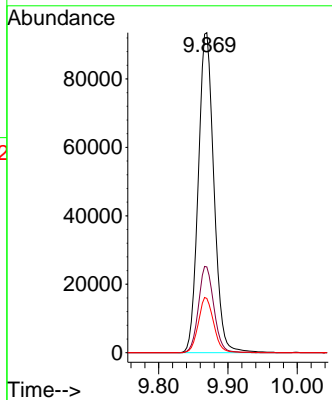
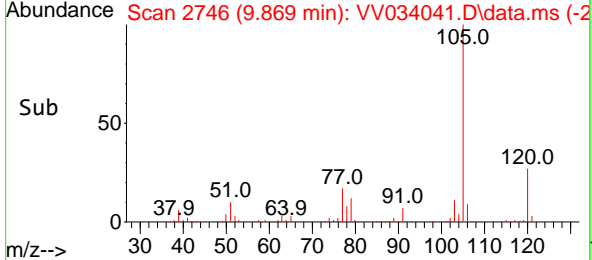
#60
 Isopropylbenzene
 Concen: 4.969 ug/L
 RT: 9.869 min Scan# 21
 Delta R.T. 0.003 min
 Lab File: VV034041.D
 Acq: 07 Feb 2024 19:19

Instrument : MSVOA_V
 ClientSampleId :

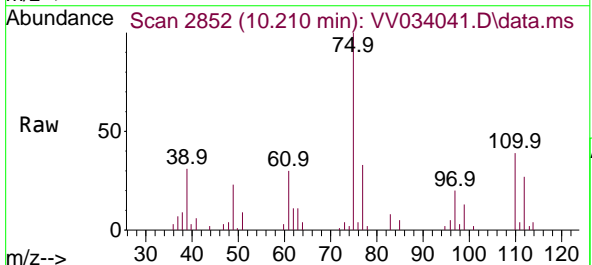


Tgt Ion: 105 Resp: 146689

Ion	Ratio	Lower	Upper
105	100		
120	26.5	20.7	31.1
77	16.9	13.0	19.6

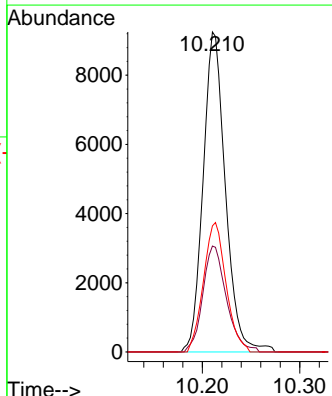
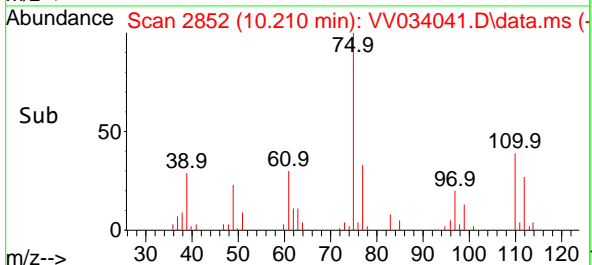


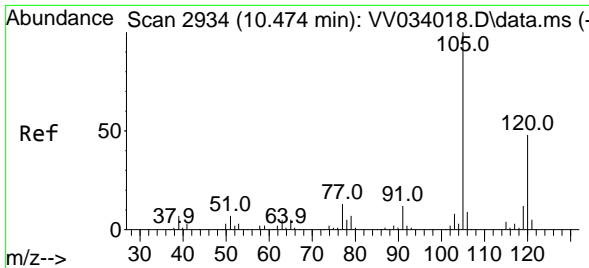
#61
 1,2,3-Trichloropropane
 Concen: 5.365 ug/L
 RT: 10.210 min Scan# 2852
 Delta R.T. 0.000 min
 Lab File: VV034041.D
 Acq: 07 Feb 2024 19:19



Tgt Ion: 75 Resp: 14714

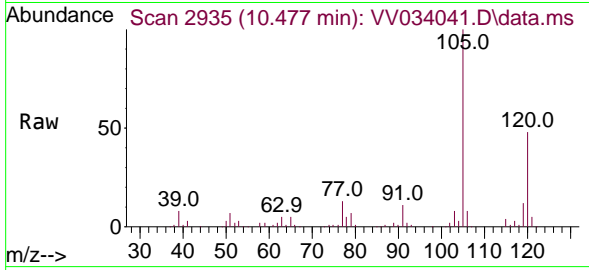
Ion	Ratio	Lower	Upper
75	100		
77	35.0	26.9	40.3
110	40.9	33.3	49.9



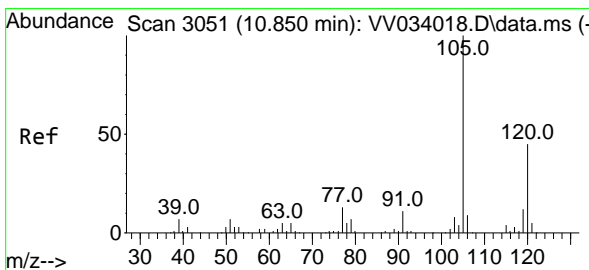
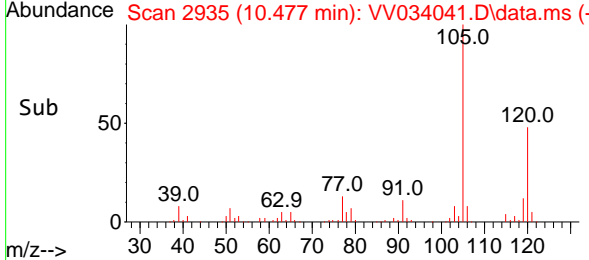
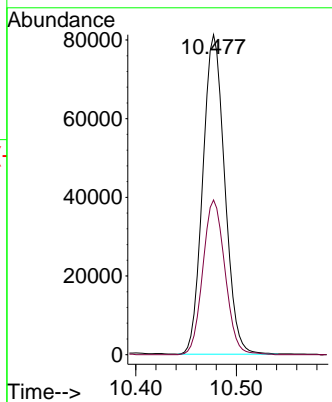


#62
 1,3,5-Trimethylbenzene
 Concen: 4.928 ug/L
 RT: 10.477 min Scan# 2935
 Delta R.T. 0.003 min
 Lab File: VV034041.D
 Acq: 07 Feb 2024 19:19

Instrument : MSVOA_V
 ClientSampleId :

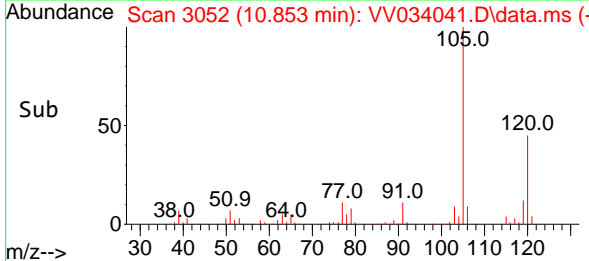
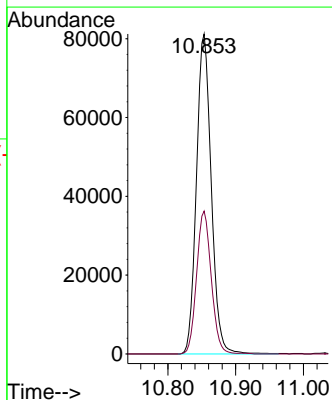
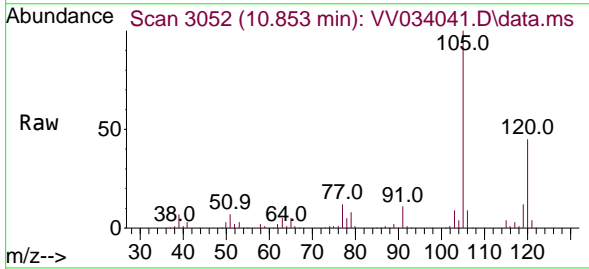


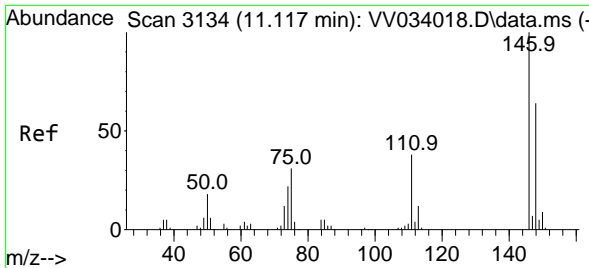
Tgt Ion:105 Resp: 122984
 Ion Ratio Lower Upper
 105 100
 120 49.0 38.2 57.4



#63
 1,2,4-Trimethylbenzene
 Concen: 5.075 ug/L
 RT: 10.853 min Scan# 3052
 Delta R.T. 0.003 min
 Lab File: VV034041.D
 Acq: 07 Feb 2024 19:19

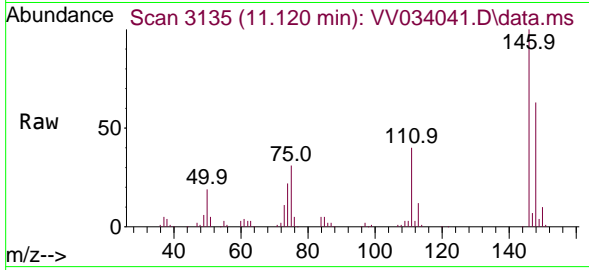
Tgt Ion:105 Resp: 123056
 Ion Ratio Lower Upper
 105 100
 120 44.2 36.2 54.2



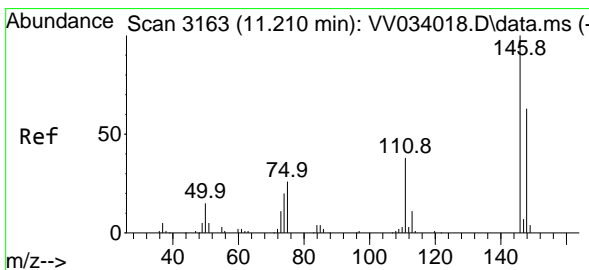
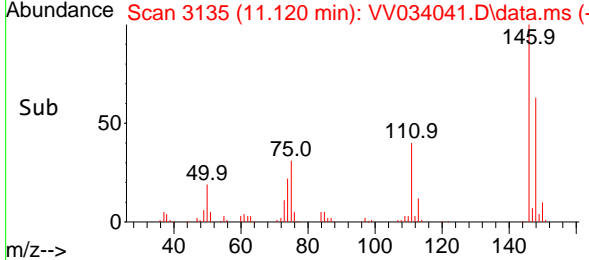
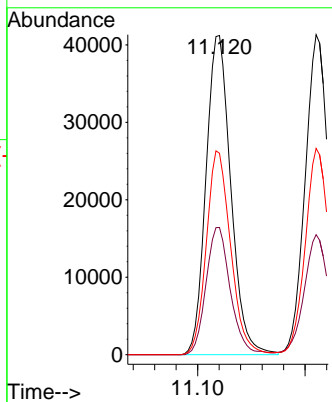


#64
 1,3-Dichlorobenzene
 Concen: 5.137 ug/L
 RT: 11.120 min Scan# 3113
 Delta R.T. 0.003 min
 Lab File: VV034041.D
 Acq: 07 Feb 2024 19:19

Instrument :
 MSVOA_V
 ClientSampleId :

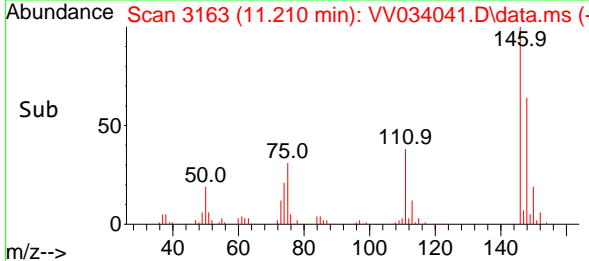
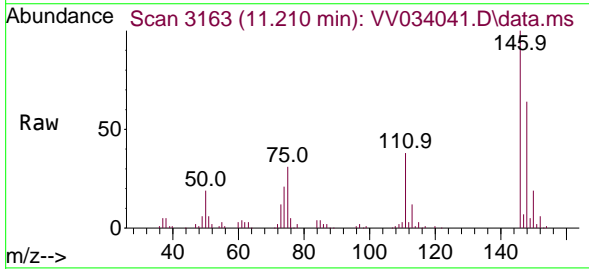
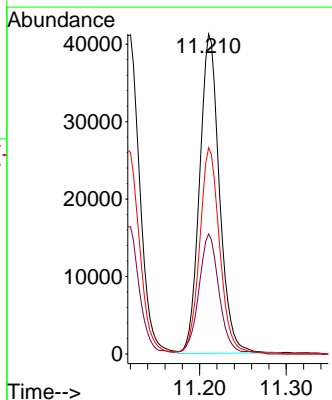


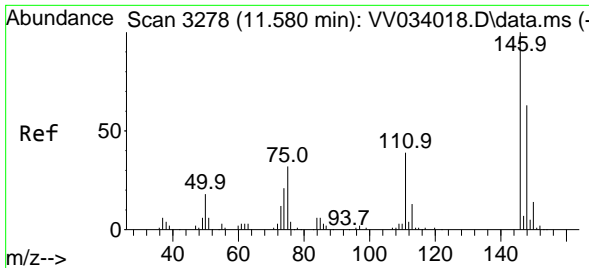
Tgt Ion:146 Resp: 66123
 Ion Ratio Lower Upper
 146 100
 111 39.9 28.5 52.9
 148 63.1 44.4 82.4



#65
 1,4-Dichlorobenzene
 Concen: 5.137 ug/L
 RT: 11.210 min Scan# 3163
 Delta R.T. 0.000 min
 Lab File: VV034041.D
 Acq: 07 Feb 2024 19:19

Tgt Ion:146 Resp: 65475
 Ion Ratio Lower Upper
 146 100
 111 37.5 27.6 51.4
 148 64.5 44.8 83.2



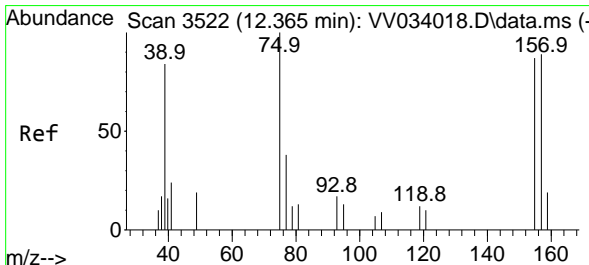
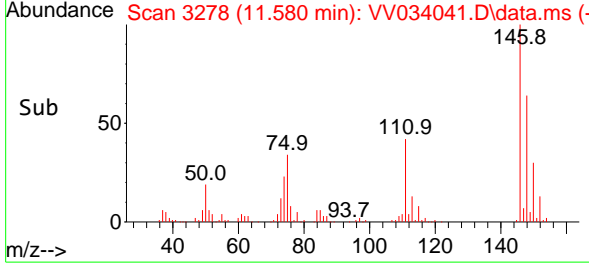
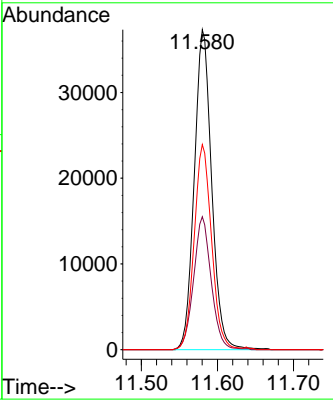
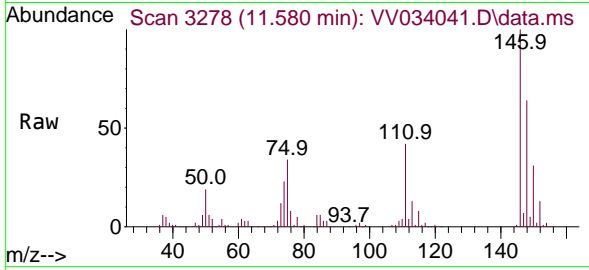


#67
 1,2-Dichlorobenzene
 Concen: 5.366 ug/L
 RT: 11.580 min Scan# 31
 Delta R.T. 0.000 min
 Lab File: VV034041.D
 Acq: 07 Feb 2024 19:19

Instrument : MSVOA_V
 ClientSampleId :

Tgt Ion:146 Resp: 59312

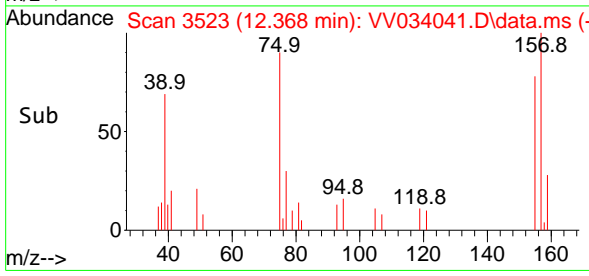
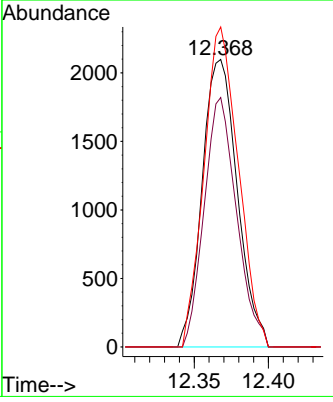
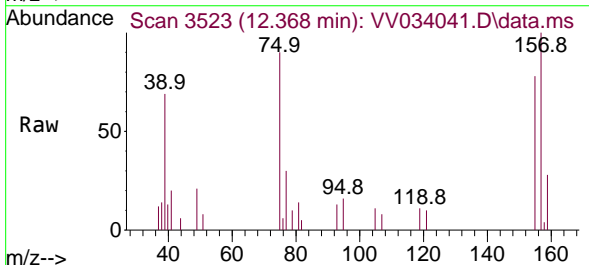
Ion	Ratio	Lower	Upper
146	100		
111	41.6	31.2	46.8
148	64.1	49.8	74.8

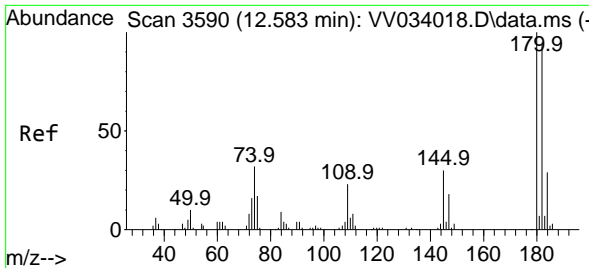


#68
 1,2-Dibromo-3-chloropropane
 Concen: 6.016 ug/L
 RT: 12.368 min Scan# 3523
 Delta R.T. 0.003 min
 Lab File: VV034041.D
 Acq: 07 Feb 2024 19:19

Tgt Ion: 75 Resp: 3458

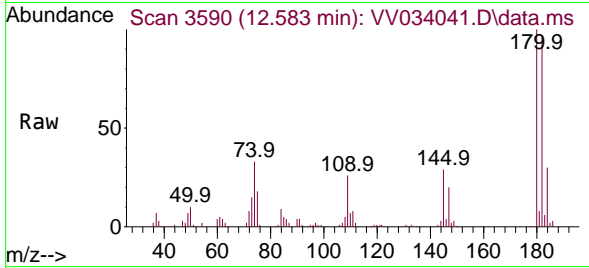
Ion	Ratio	Lower	Upper
75	100		
155	86.7	68.9	103.3
157	111.3	84.6	127.0



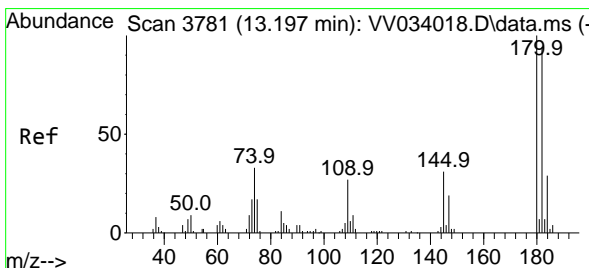
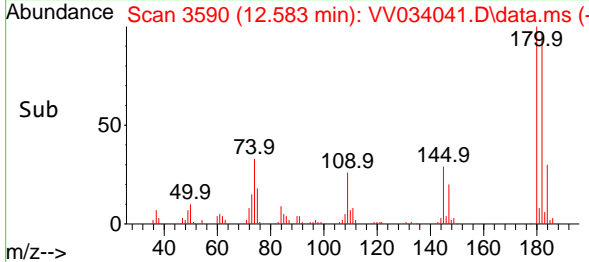
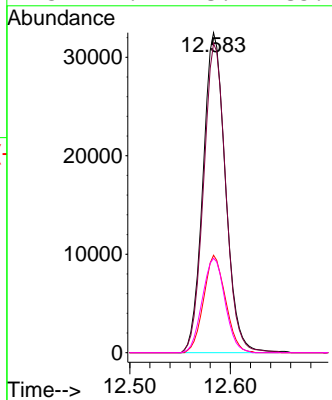


#69
 1,3,5-Trichlorobenzene
 Concen: 5.056 ug/L
 RT: 12.583 min Scan# 31
 Delta R.T. 0.000 min
 Lab File: VV034041.D
 Acq: 07 Feb 2024 19:19

Instrument : MSVOA_V
 ClientSampleId :

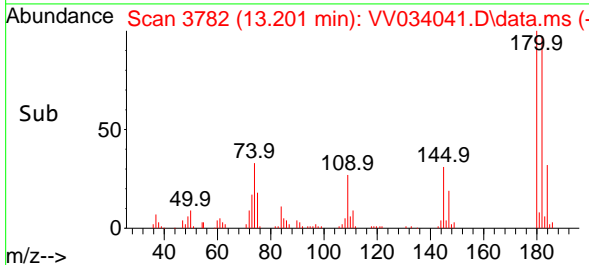
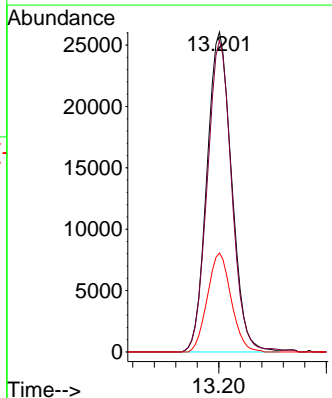
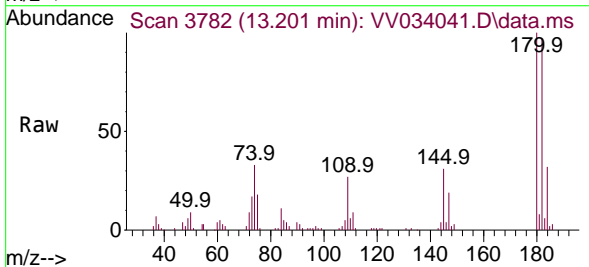


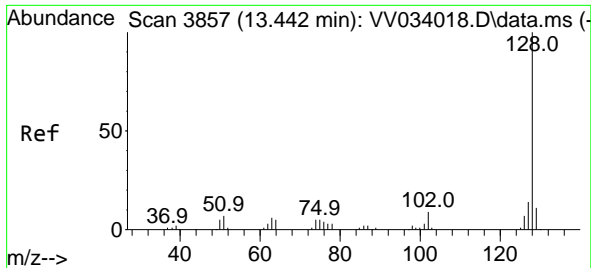
Tgt Ion:180 Resp: 50363
 Ion Ratio Lower Upper
 180 100
 182 95.7 77.0 115.4
 184 29.7 23.8 35.6
 145 29.9 23.4 35.2



#70
 1,2,4-trichlorobenzene
 Concen: 5.332 ug/L
 RT: 13.201 min Scan# 3782
 Delta R.T. 0.003 min
 Lab File: VV034041.D
 Acq: 07 Feb 2024 19:19

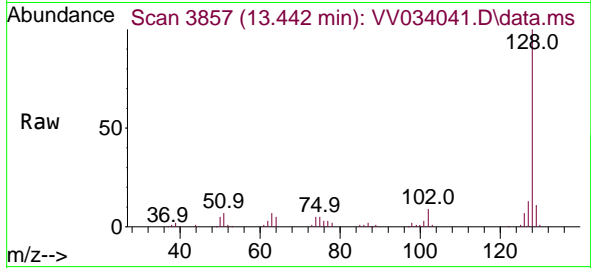
Tgt Ion:180 Resp: 41463
 Ion Ratio Lower Upper
 180 100
 182 96.5 76.8 115.2
 145 29.8 24.8 37.2



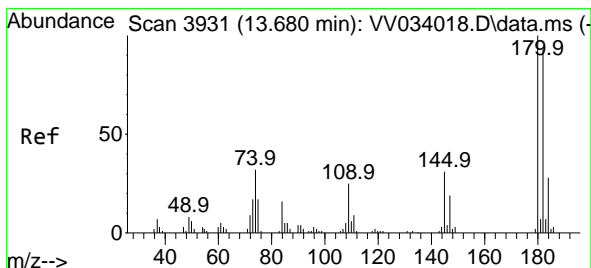
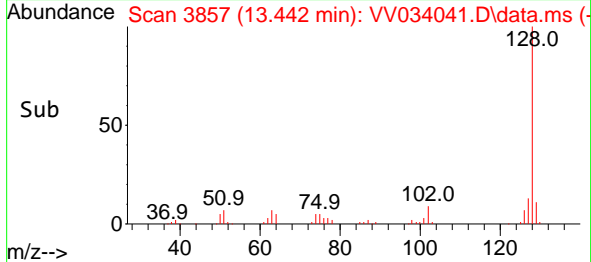
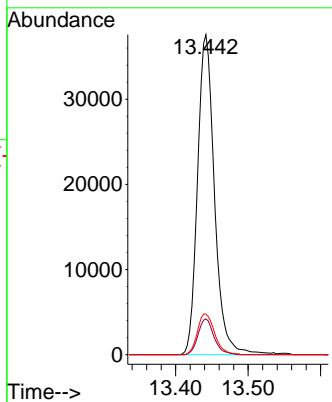


#71
 Naphthalene
 Concen: 6.001 ug/L
 RT: 13.442 min Scan# 3857
 Delta R.T. 0.000 min
 Lab File: VV034041.D
 Acq: 07 Feb 2024 19:19

Instrument : MSVOA_V
 ClientSampleId :



Tgt Ion:128 Resp: 61147
 Ion Ratio Lower Upper
 128 100
 129 10.4 8.5 12.7
 127 13.0 10.4 15.6



#72
 1,2,3-Trichlorobenzene
 Concen: 5.520 ug/L
 RT: 13.683 min Scan# 3932
 Delta R.T. 0.003 min
 Lab File: VV034041.D
 Acq: 07 Feb 2024 19:19

Tgt Ion:180 Resp: 34391
 Ion Ratio Lower Upper
 180 100
 182 96.3 75.0 112.6
 145 32.1 25.2 37.8

