

Data Path : Z:\voasrv\HPCHEM1\MSVOA\_V\Data\VW020924\  
 Data File : VW034104.D  
 Acq On : 09 Feb 2024 12:02  
 Operator : SY/MD  
 Sample : P1383-12  
 Misc : 25.0mL/MSVOA\_V/WATER  
 ALS Vial : 10 Sample Multiplier: 1

Instrument :  
 MSVOA\_V  
 ClientSampleId :

Quant Time: Feb 09 13:40:51 2024  
 Quant Method : Z:\voasrv\HPCHEM1\MSVOA\_V\Method\SFAMVTR012524WMA.M  
 Quant Title : TRACE VOA SFAM1.0  
 QLast Update : Fri Feb 09 03:48:51 2024  
 Response via : Initial Calibration

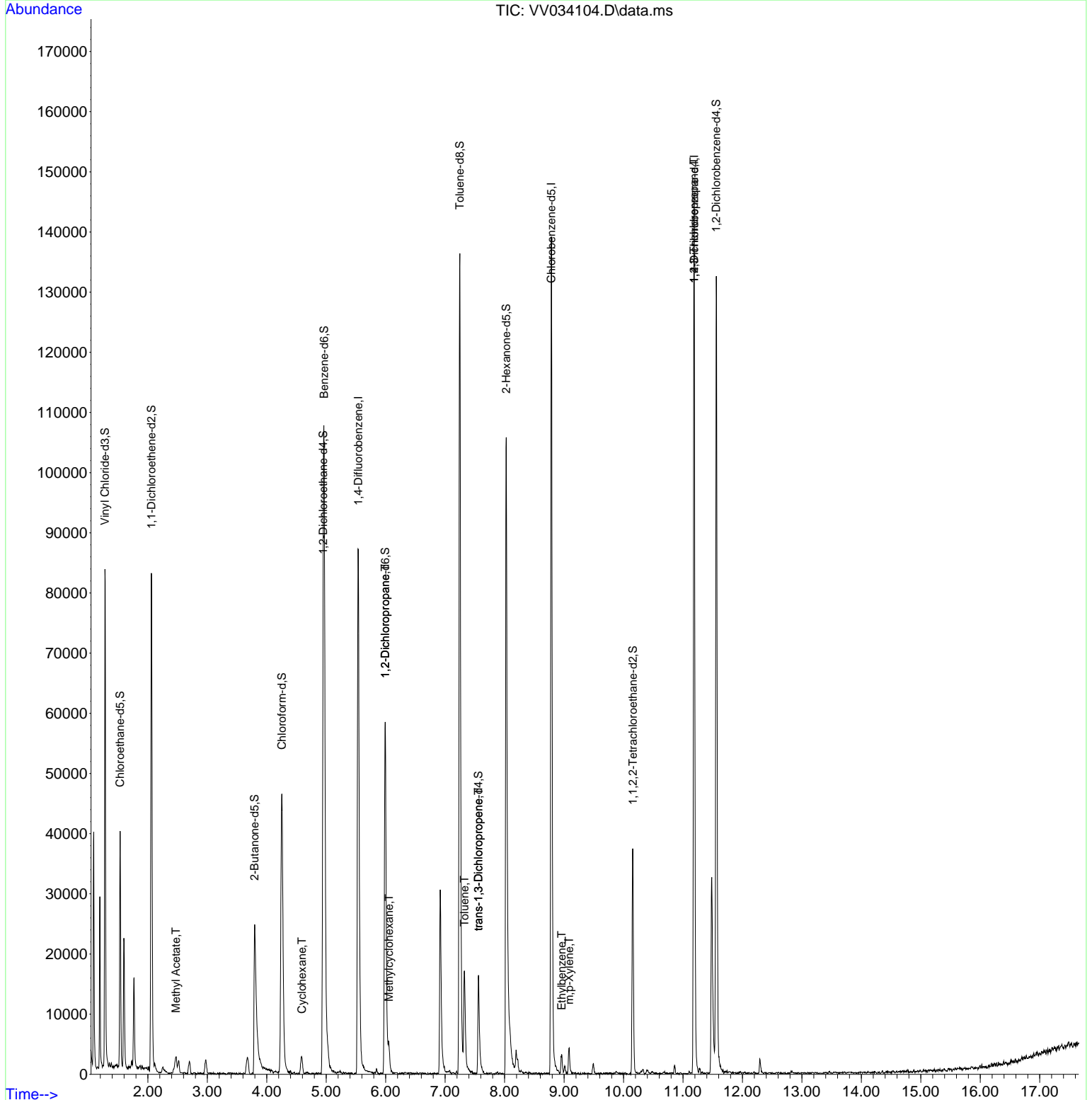
Compound	R.T.	QIon	Response	Conc	Units	Dev(Min)
Internal Standards						
1) 1,4-Difluorobenzene	5.539	114	76648	5.000	ug/L	0.00
28) Chlorobenzene-d5	8.786	117	73370	5.000	ug/L	0.00
58) 1,4-Dichlorobenzene-d4	11.188	152	37269	5.000	ug/L	0.00
System Monitoring Compounds						
4) Vinyl Chloride-d3	1.278	65	29189	4.917	ug/L	0.00
Spiked Amount	5.000	Range 40 - 130	Recovery	=	98.400%	
7) Chloroethane-d5	1.532	69	24844	4.778	ug/L	0.00
Spiked Amount	5.000	Range 65 - 130	Recovery	=	95.600%	
11) 1,1-Dichloroethene-d2	2.060	65	13846	4.837	ug/L	0.00
Spiked Amount	5.000	Range 60 - 125	Recovery	=	96.800%	
20) 2-Butanone-d5	3.796	46	44187	44.321	ug/L	0.00
Spiked Amount	50.000	Range 40 - 130	Recovery	=	88.640%	
24) Chloroform-d	4.252	84	50610	4.692	ug/L	0.00
Spiked Amount	5.000	Range 70 - 125	Recovery	=	93.800%	
26) 1,2-Dichloroethane-d4	4.947	65	25959	5.150	ug/L	0.00
Spiked Amount	5.000	Range 70 - 130	Recovery	=	103.000%	
32) Benzene-d6	4.963	84	98578	4.478	ug/L	0.00
Spiked Amount	5.000	Range 70 - 125	Recovery	=	89.600%	
36) 1,2-Dichloropropane-d6	5.992	67	27151	4.412	ug/L	0.00
Spiked Amount	5.000	Range 60 - 140	Recovery	=	88.200%	
41) Toluene-d8	7.246	98	92885	4.591	ug/L	0.00
Spiked Amount	5.000	Range 70 - 130	Recovery	=	91.800%	
43) trans-1,3-Dichloroprop...	7.561	79	10463	4.503	ug/L	0.00
Spiked Amount	5.000	Range 55 - 130	Recovery	=	90.000%	
46) 2-Hexanone-d5	8.027	63	38602	46.540	ug/L	0.00
Spiked Amount	50.000	Range 45 - 130	Recovery	=	93.080%	
56) 1,1,2,2-Tetrachloroeth...	10.156	84	17760	4.761	ug/L	0.00
Spiked Amount	5.000	Range 65 - 120	Recovery	=	95.200%	
66) 1,2-Dichlorobenzene-d4	11.561	152	33527	4.946	ug/L	0.00
Spiked Amount	5.000	Range 80 - 120	Recovery	=	99.000%	
Target Compounds						
15) Methyl Acetate	2.471	43	2384	1.332	ug/L #	53
30) Cyclohexane	4.590	56	1372	0.143	ug/L #	54
35) Methylcyclohexane	6.056	83	2044	0.204	ug/L #	78
37) 1,2-Dichloropropane	5.992	63	3495	0.656	ug/L #	87
42) Toluene	7.323	91	13467	0.573	ug/L	92
44) trans-1,3-Dichloropropene	7.561	75	561	0.090	ug/L #	67
52) Ethylbenzene	8.960	91	2965	0.110	ug/L	100
53) m,p-Xylene	9.085	106	1609	0.157	ug/L	75
61) 1,2,3-Trichloropropane	11.185	75	4397	1.716	ug/L #	59

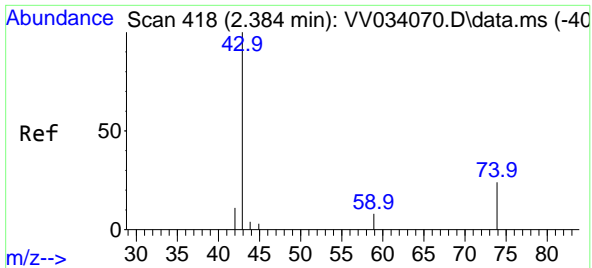
(#) = qualifier out of range (m) = manual integration (+) = signals summed

Data Path : Z:\voasrv\HPCHEM1\MSVOA\_V\Data\VV020924\  
Data File : VV034104.D  
Acq On : 09 Feb 2024 12:02  
Operator : SY/MD  
Sample : P1383-12  
Misc : 25.0mL/MSVOA\_V/WATER  
ALS Vial : 10 Sample Multiplier: 1

Instrument :  
MSVOA\_V  
ClientSampleId :

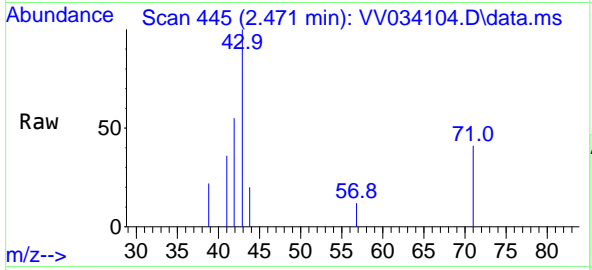
Quant Time: Feb 09 13:40:51 2024  
Quant Method : Z:\voasrv\HPCHEM1\MSVOA\_V\Method\SFAMVTR012524WMA.M  
Quant Title : TRACE VOA SFAM1.0  
QLast Update : Fri Feb 09 03:48:51 2024  
Response via : Initial Calibration



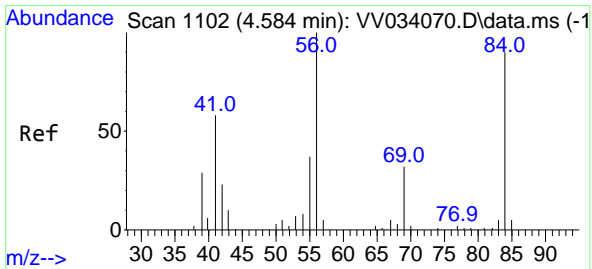
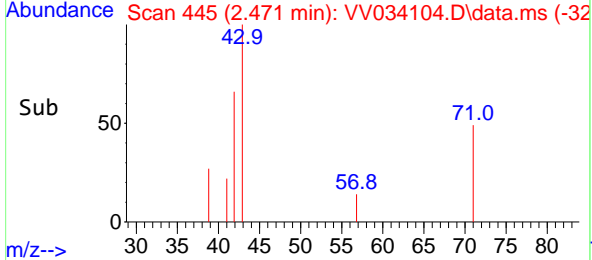
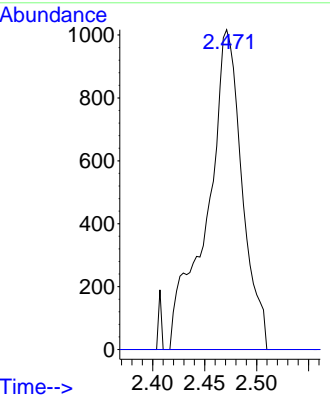


#15  
 Methyl Acetate  
 Concen: 1.332 ug/L  
 RT: 2.471 min Scan# 445  
 Delta R.T. 0.087 min  
 Lab File: VV034104.D  
 Acq: 09 Feb 2024 12:02

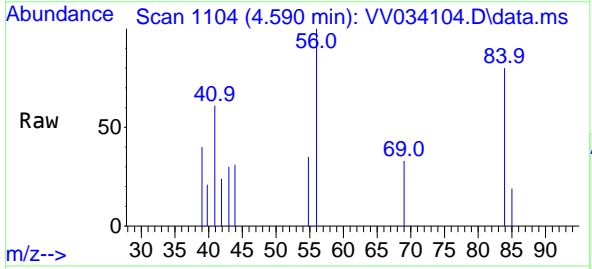
Instrument : MSVOA\_V  
 ClientSampleId :



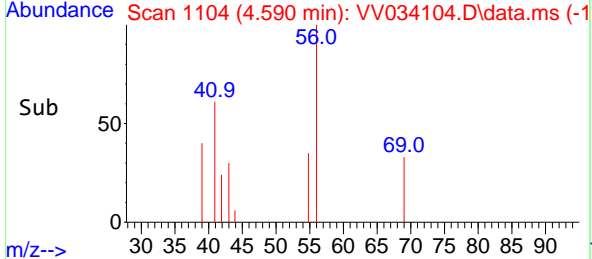
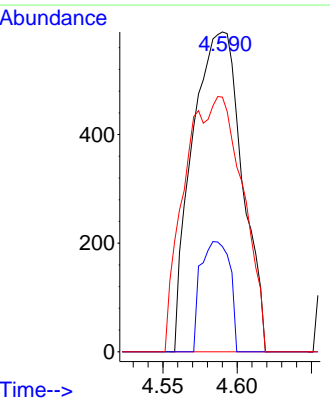
Tgt Ion: 43 Resp: 2384  
 Ion Ratio Lower Upper  
 43 100  
 74 0.0 18.2 27.4#

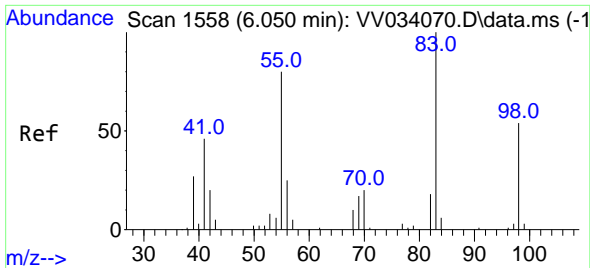


#30  
 Cyclohexane  
 Concen: 0.143 ug/L  
 RT: 4.590 min Scan# 1104  
 Delta R.T. 0.006 min  
 Lab File: VV034104.D  
 Acq: 09 Feb 2024 12:02



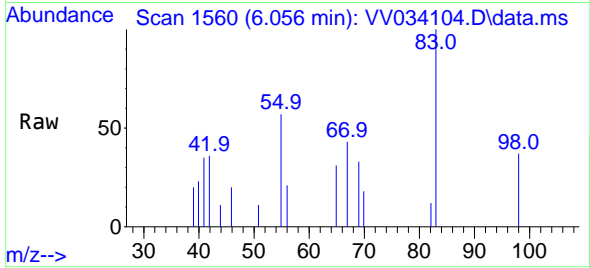
Tgt Ion: 56 Resp: 1372  
 Ion Ratio Lower Upper  
 56 100  
 69 20.1 24.2 36.2#  
 84 36.0 70.0 105.0#



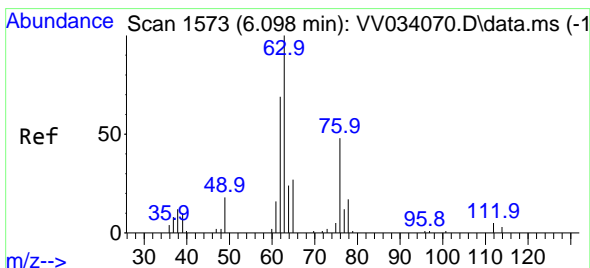
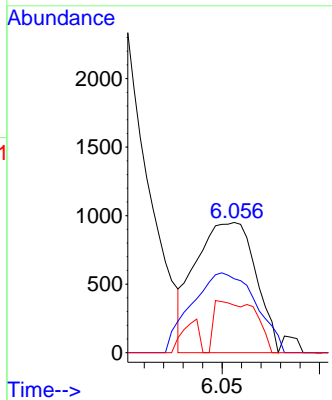
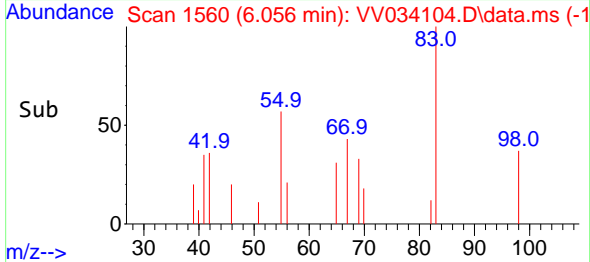


#35  
 Methylcyclohexane  
 Concen: 0.204 ug/L  
 RT: 6.056 min Scan# 11  
 Delta R.T. 0.006 min  
 Lab File: VV034104.D  
 Acq: 09 Feb 2024 12:02

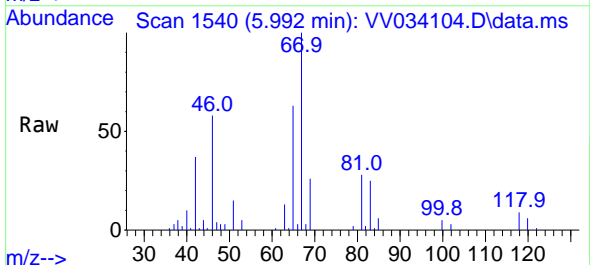
Instrument :  
 MSVOA\_V  
 ClientSampleId :



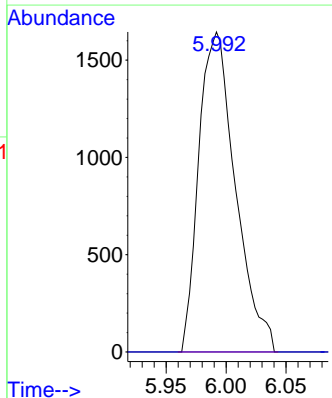
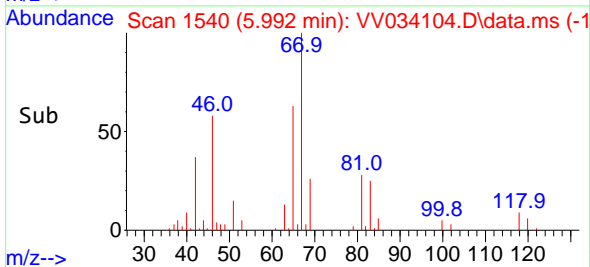
Tgt Ion: 83 Resp: 2044  
 Ion Ratio Lower Upper  
 83 100  
 55 65.4 63.5 95.3  
 98 27.2 39.0 58.4#

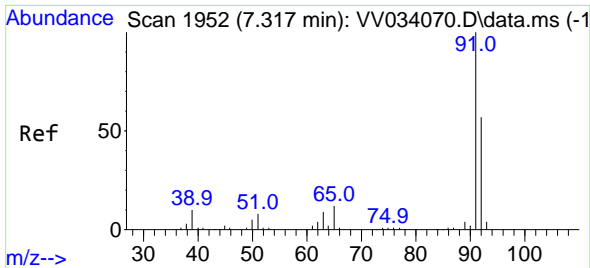


#37  
 1,2-Dichloropropane  
 Concen: 0.656 ug/L  
 RT: 5.992 min Scan# 1540  
 Delta R.T. -0.106 min  
 Lab File: VV034104.D  
 Acq: 09 Feb 2024 12:02



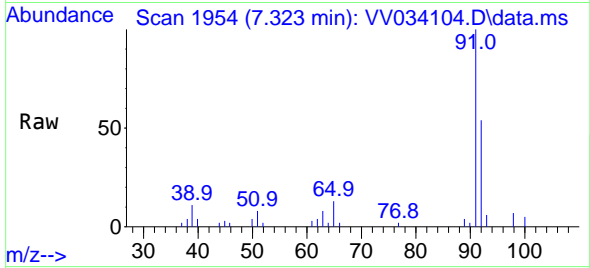
Tgt Ion: 63 Resp: 3495  
 Ion Ratio Lower Upper  
 63 100  
 112 0.0 3.4 5.0#



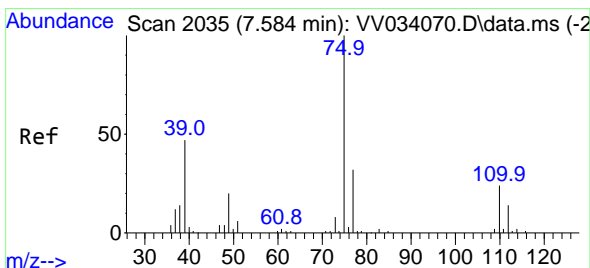
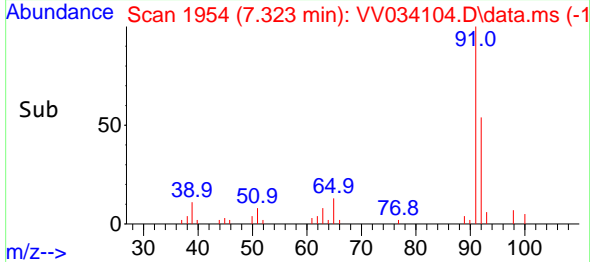
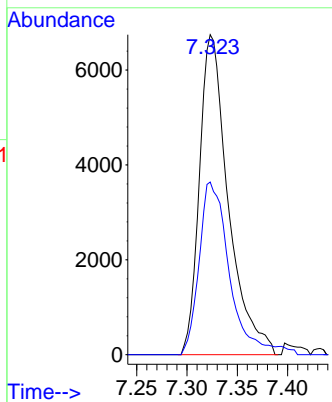


#42  
 Toluene  
 Concen: 0.573 ug/L  
 RT: 7.323 min Scan# 1952  
 Delta R.T. 0.006 min  
 Lab File: VV034104.D  
 Acq: 09 Feb 2024 12:02

Instrument : MSVOA\_V  
 ClientSampleId :

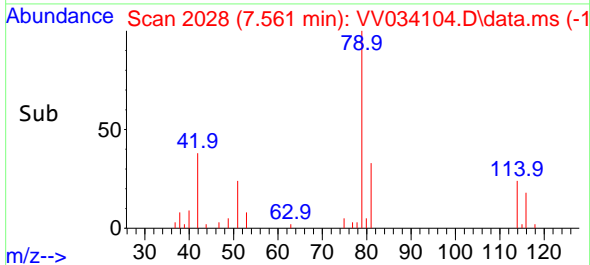
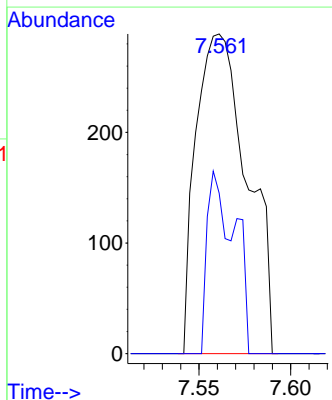
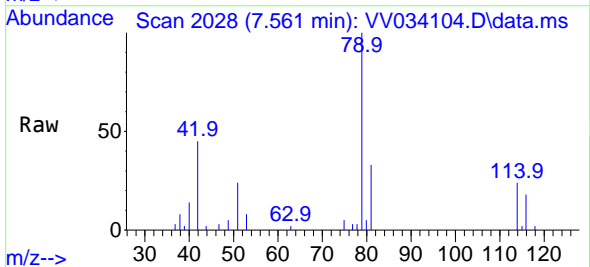


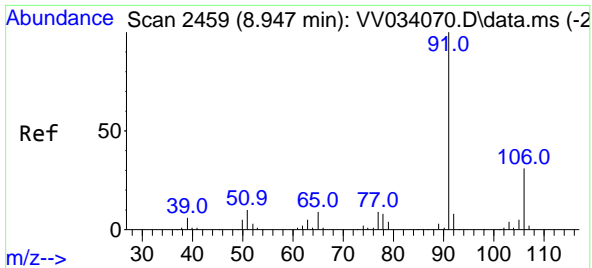
Tgt Ion: 91 Resp: 13467  
 Ion Ratio Lower Upper  
 91 100  
 92 54.0 42.1 78.3



#44  
 trans-1,3-Dichloropropene  
 Concen: 0.090 ug/L  
 RT: 7.561 min Scan# 2028  
 Delta R.T. -0.023 min  
 Lab File: VV034104.D  
 Acq: 09 Feb 2024 12:02

Tgt Ion: 75 Resp: 561  
 Ion Ratio Lower Upper  
 75 100  
 77 50.2 22.2 41.2#

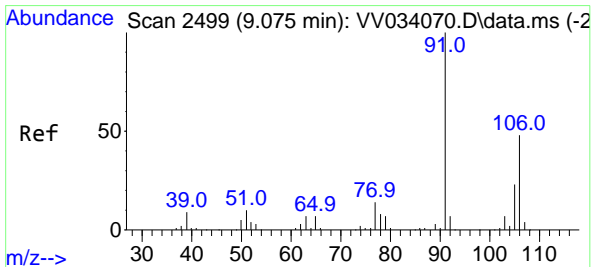
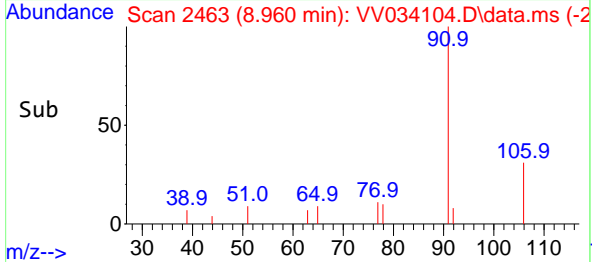
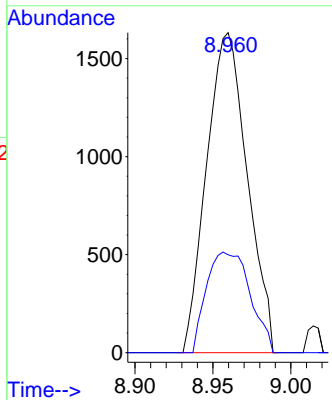
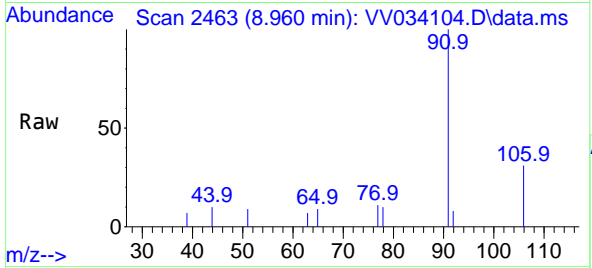




#52  
 Ethylbenzene  
 Concen: 0.110 ug/L  
 RT: 8.960 min Scan# 24  
 Delta R.T. 0.013 min  
 Lab File: VV034104.D  
 Acq: 09 Feb 2024 12:02

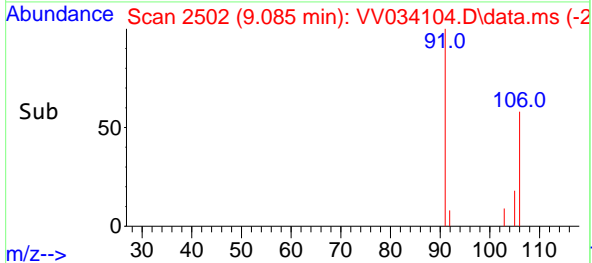
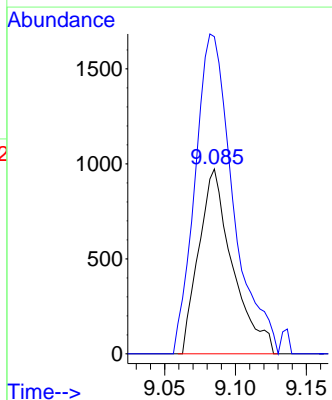
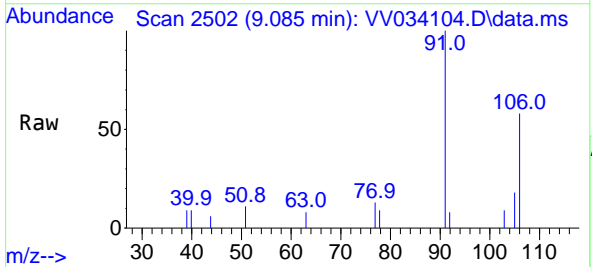
Instrument :  
 MSVOA\_V  
 ClientSampleId :

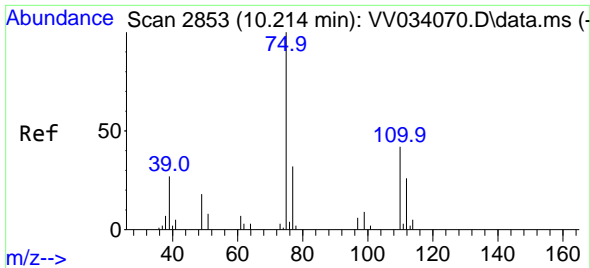
Tgt Ion: 91 Resp: 2965  
 Ion Ratio Lower Upper  
 91 100  
 106 30.6 21.4 39.8



#53  
 m,p-Xylene  
 Concen: 0.157 ug/L  
 RT: 9.085 min Scan# 2502  
 Delta R.T. 0.010 min  
 Lab File: VV034104.D  
 Acq: 09 Feb 2024 12:02

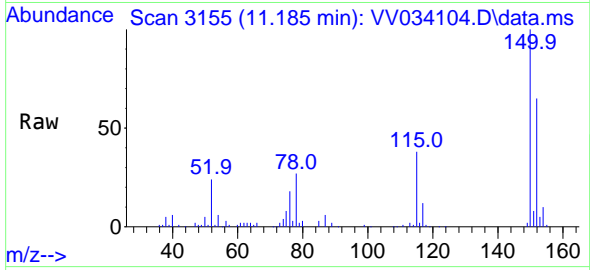
Tgt Ion: 106 Resp: 1609  
 Ion Ratio Lower Upper  
 106 100  
 91 171.6 147.5 273.9





#61  
 1,2,3-Trichloropropane  
 Concen: 1.716 ug/L  
 RT: 11.185 min Scan# 31  
 Delta R.T. 0.971 min  
 Lab File: VV034104.D  
 Acq: 09 Feb 2024 12:02

Instrument :  
 MSVOA\_V  
 ClientSampleId :



Tgt Ion: 75 Resp: 4397

Ion	Ratio	Lower	Upper
75	100		
77	38.8	26.9	40.3
110	0.0	33.3	49.9#

