

Data Path : Z:\voasrv\HPCHEM1\MSVOA_V\Data\VW020924\
 Data File : VW034117.D
 Acq On : 09 Feb 2024 17:15
 Operator : SY/MD
 Sample : P1384-09
 Misc : 25.0mL/MSVOA_V/WATER
 ALS Vial : 23 Sample Multiplier: 1

Instrument :
 MSVOA_V
 ClientSampleId :

Quant Time: Feb 09 23:16:57 2024
 Quant Method : Z:\voasrv\HPCHEM1\MSVOA_V\Method\SFAMVTR012524WMA.M
 Quant Title : TRACE VOA SFAM1.0
 QLast Update : Fri Feb 09 22:58:56 2024
 Response via : Initial Calibration

Compound	R.T.	QIon	Response	Conc	Units	Dev(Min)
Internal Standards						
1) 1,4-Difluorobenzene	5.539	114	72606	5.000	ug/L	0.00
28) Chlorobenzene-d5	8.786	117	67551	5.000	ug/L	0.00
58) 1,4-Dichlorobenzene-d4	11.188	152	34871	5.000	ug/L	0.00
System Monitoring Compounds						
4) Vinyl Chloride-d3	1.278	65	25848	4.597	ug/L	0.00
Spiked Amount	5.000	Range 40 - 130	Recovery	=	92.000%	
7) Chloroethane-d5	1.532	69	21474	4.360	ug/L	0.00
Spiked Amount	5.000	Range 65 - 130	Recovery	=	87.200%	
11) 1,1-Dichloroethene-d2	2.060	65	12602	4.647	ug/L	0.00
Spiked Amount	5.000	Range 60 - 125	Recovery	=	93.000%	
20) 2-Butanone-d5	3.793	46	44740	47.374	ug/L	-0.03
Spiked Amount	50.000	Range 40 - 130	Recovery	=	94.740%	
24) Chloroform-d	4.253	84	47272	4.626	ug/L	0.00
Spiked Amount	5.000	Range 70 - 125	Recovery	=	92.600%	
26) 1,2-Dichloroethane-d4	4.947	65	24585	5.149	ug/L	0.00
Spiked Amount	5.000	Range 70 - 130	Recovery	=	103.000%	
32) Benzene-d6	4.963	84	89531	4.418	ug/L	0.00
Spiked Amount	5.000	Range 70 - 125	Recovery	=	88.400%	
36) 1,2-Dichloropropane-d6	5.992	67	26450	4.669	ug/L	0.00
Spiked Amount	5.000	Range 60 - 140	Recovery	=	93.400%	
41) Toluene-d8	7.246	98	83394	4.477	ug/L	0.00
Spiked Amount	5.000	Range 70 - 130	Recovery	=	89.600%	
43) trans-1,3-Dichloroprop...	7.561	79	10017	4.683	ug/L	0.00
Spiked Amount	5.000	Range 55 - 130	Recovery	=	93.600%	
46) 2-Hexanone-d5	8.027	63	41192	53.941	ug/L	0.00
Spiked Amount	50.000	Range 45 - 130	Recovery	=	107.880%	
56) 1,1,2,2-Tetrachloroeth...	10.156	84	18117	5.275	ug/L	0.00
Spiked Amount	5.000	Range 65 - 120	Recovery	=	105.400%	
66) 1,2-Dichlorobenzene-d4	11.561	152	29778	4.695	ug/L	0.00
Spiked Amount	5.000	Range 80 - 120	Recovery	=	94.000%	
Target Compounds						
3) Chloromethane	1.269	50	7357	1.014	ug/L #	49
5) Vinyl chloride	1.282	62	2760	0.398	ug/L	82
8) Chloroethane	1.548	64	1611	0.341	ug/L	94
9) Trichlorofluoromethane	1.671	101	1707	0.171	ug/L	92
15) Methyl Acetate	2.471	43	4345	2.562	ug/L #	53
17) Methyl tert-butyl Ether	2.709	73	1183	0.114	ug/L #	1
18) trans-1,2-Dichloroethene	2.703	96	1706	0.330	ug/L	85
19) 1,1-Dichloroethane	3.121	63	1068	0.113	ug/L #	75
22) cis-1,2-Dichloroethene	3.822	96	3086	0.527	ug/L	95
30) Cyclohexane	4.577	56	1371	0.155	ug/L #	1
33) Benzene	5.015	78	77892	3.844	ug/L	100
34) Trichloroethene	5.851	95	762	0.130	ug/L	92
35) Methylcyclohexane	6.050	83	3833	0.416	ug/L	95
37) 1,2-Dichloropropane	5.989	63	3345	0.682	ug/L #	87
39) cis-1,3-Dichloropropene	6.915	75	986	0.132	ug/L	94
42) Toluene	7.323	91	11838	0.547	ug/L	93
51) Chlorobenzene	8.818	112	24470	1.787	ug/L	97
52) Ethylbenzene	8.957	91	2448	0.098	ug/L	97
53) m,p-Xylene	9.082	106	1689	0.179	ug/L	94

Data Path : Z:\voasrv\HPCHEM1\MSVOA_V\Data\VV020924\
Data File : VV034117.D
Acq On : 09 Feb 2024 17:15
Operator : SY/MD
Sample : P1384-09
Misc : 25.0mL/MSVOA_V/WATER
ALS Vial : 23 Sample Multiplier: 1

Instrument :
MSVOA_V
ClientSampleId :

Quant Time: Feb 09 23:16:57 2024
Quant Method : Z:\voasrv\HPCHEM1\MSVOA_V\Method\SFAMVTR012524WMA.M
Quant Title : TRACE VOA SFAM1.0
QLast Update : Fri Feb 09 22:58:56 2024
Response via : Initial Calibration

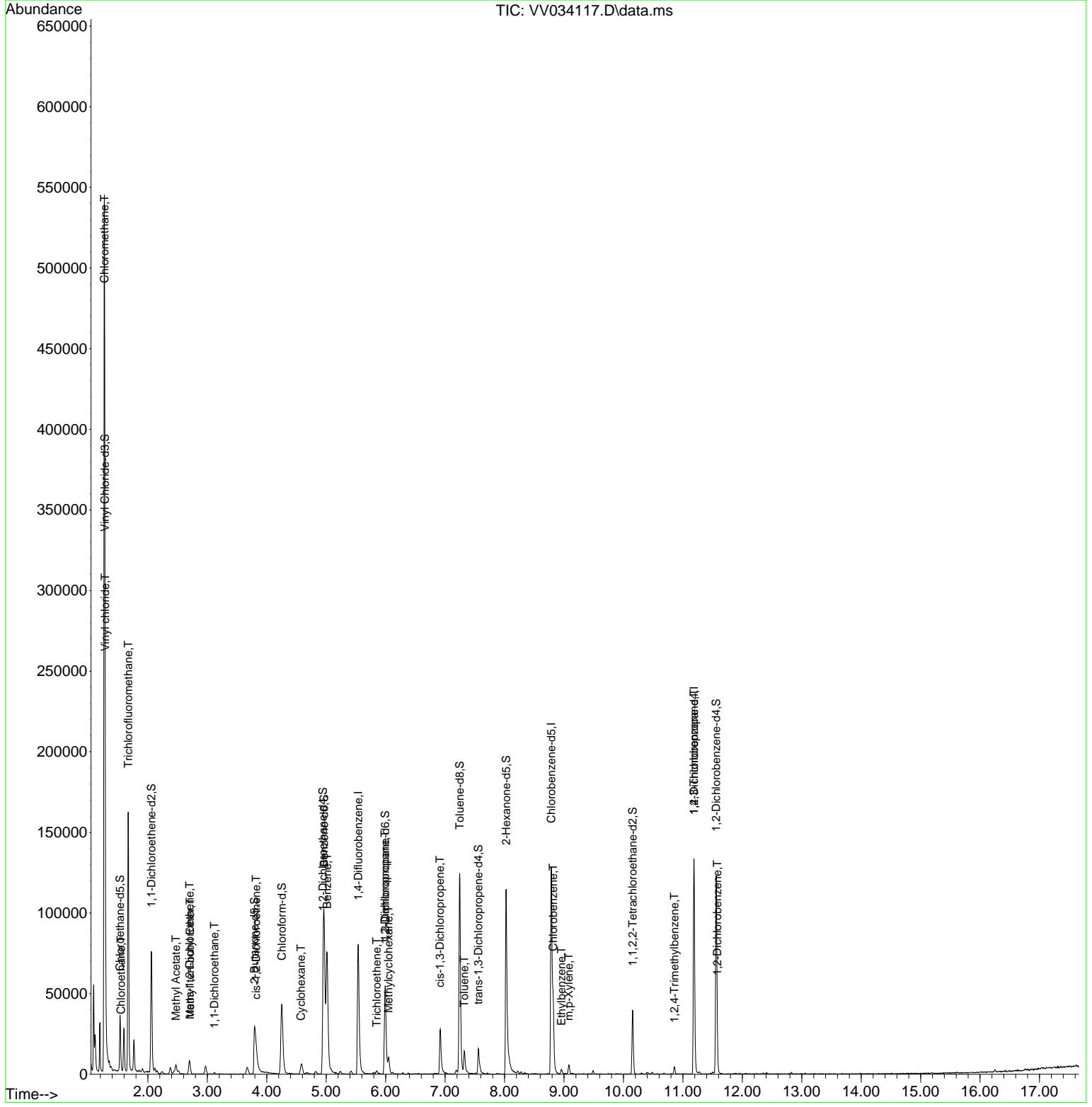
Compound	R.T.	QIon	Response	Conc	Units	Dev(Min)
61) 1,2,3-Trichloropropane	11.188	75	4068	1.697	ug/L #	60
63) 1,2,4-Trimethylbenzene	10.857	105	3393	0.160	ug/L	90
67) 1,2-Dichlorobenzene	11.580	146	1574	0.163	ug/L #	82

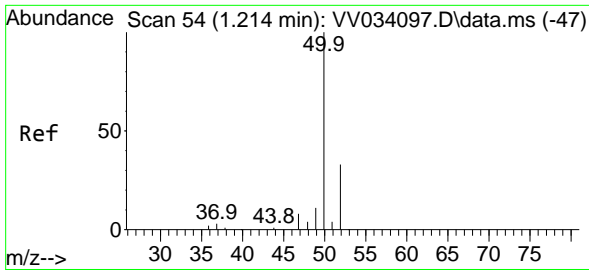
(#) = qualifier out of range (m) = manual integration (+) = signals summed

Data Path : Z:\voasrv\HPCHEM1\MSVOA_V\Data\VV020924\
 Data File : VV034117.D
 Acq On : 09 Feb 2024 17:15
 Operator : SY/MD
 Sample : P1384-09
 Misc : 25.0mL/MSVOA_V/WATER
 ALS Vial : 23 Sample Multiplier: 1

Instrument :
 MSVOA_V
 ClientSampleId :

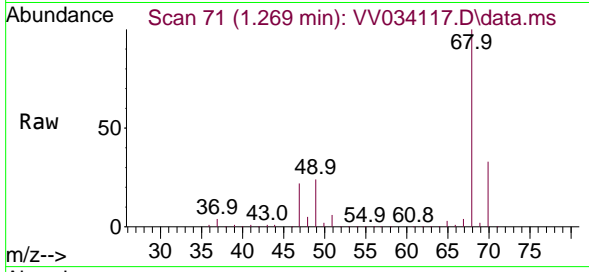
Quant Time: Feb 09 23:16:57 2024
 Quant Method : Z:\voasrv\HPCHEM1\MSVOA_V\Method\SFAMVTR012524WMA.M
 Quant Title : TRACE VOA SFAM1.0
 QLast Update : Fri Feb 09 22:58:56 2024
 Response via : Initial Calibration



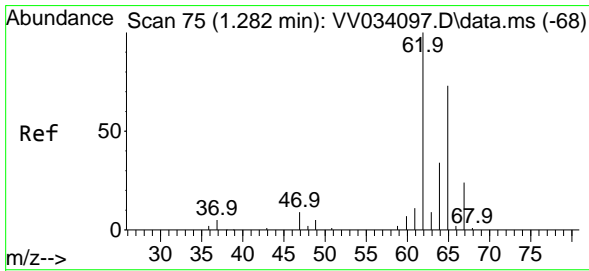
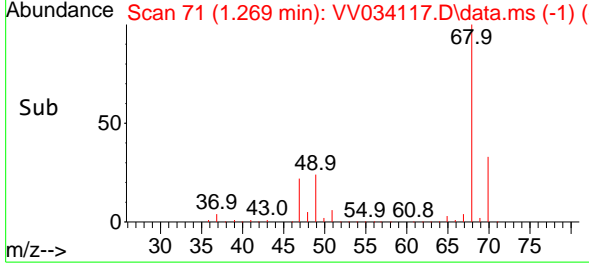
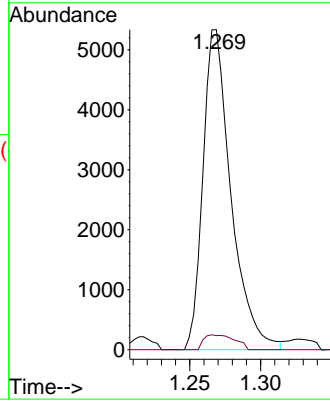


#3
 Chloromethane
 Concen: 1.014 ug/L
 RT: 1.269 min Scan# 71
 Delta R.T. 0.055 min
 Lab File: VV034117.D
 Acq: 09 Feb 2024 17:15

Instrument :
 MSVOA_V
 ClientSampleId :

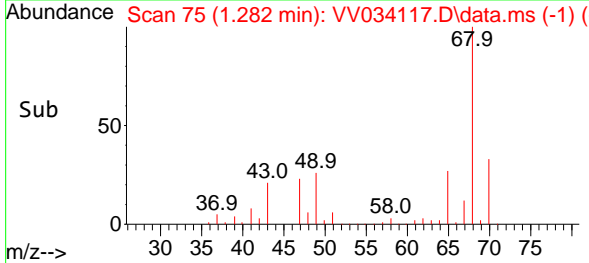
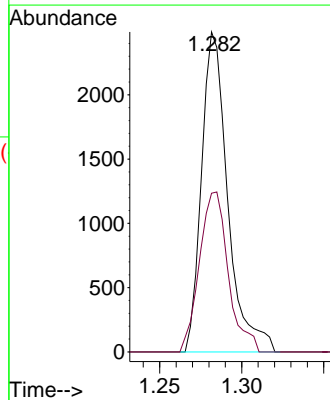
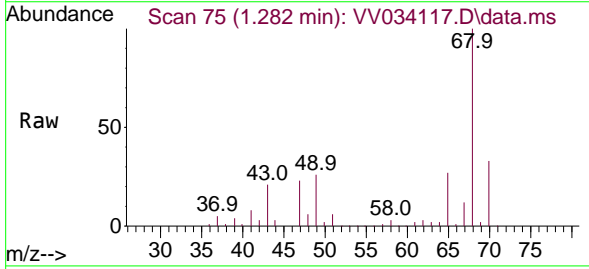


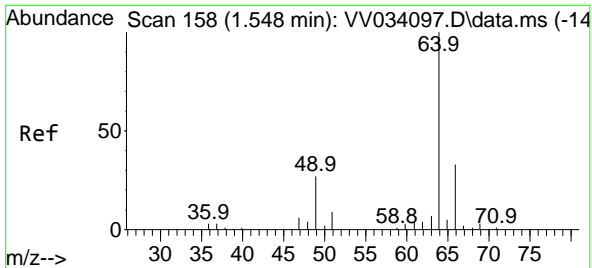
Tgt Ion: 50 Resp: 7357
 Ion Ratio Lower Upper
 50 100
 52 4.4 23.4 43.4#



#5
 Vinyl chloride
 Concen: 0.398 ug/L
 RT: 1.282 min Scan# 75
 Delta R.T. 0.000 min
 Lab File: VV034117.D
 Acq: 09 Feb 2024 17:15

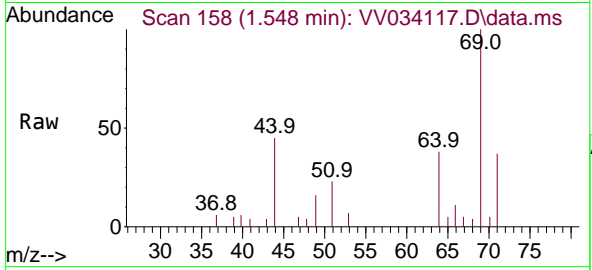
Tgt Ion: 62 Resp: 2760
 Ion Ratio Lower Upper
 62 100
 64 49.6 27.2 50.4



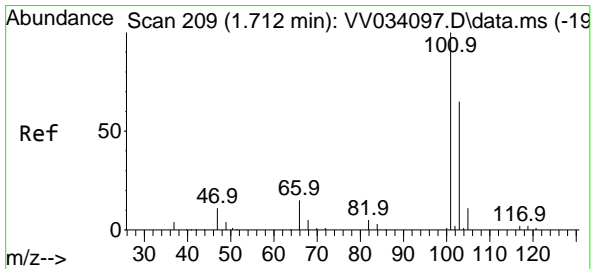
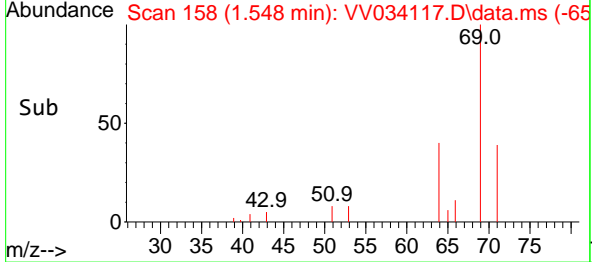
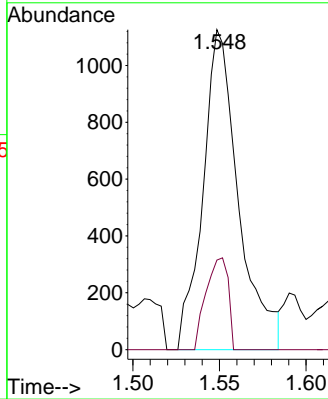


#8
 Chloroethane
 Concen: 0.341 ug/L
 RT: 1.548 min Scan# 11
 Delta R.T. 0.000 min
 Lab File: VV034117.D
 Acq: 09 Feb 2024 17:15

Instrument :
 MSVOA_V
 ClientSampleId :

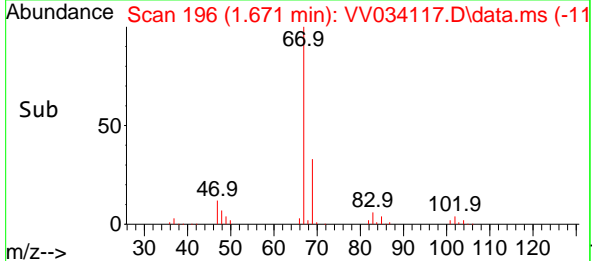
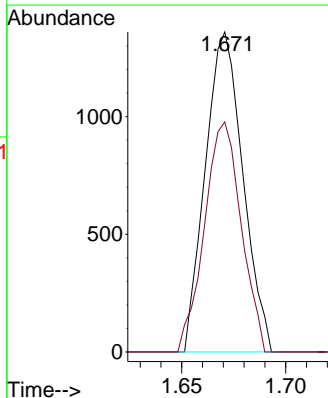
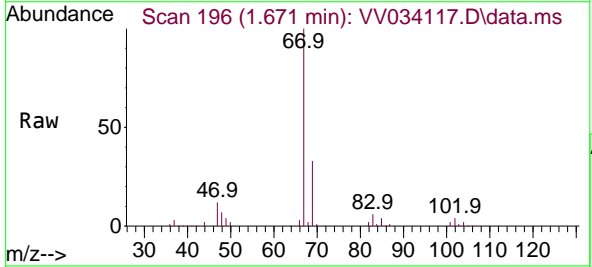


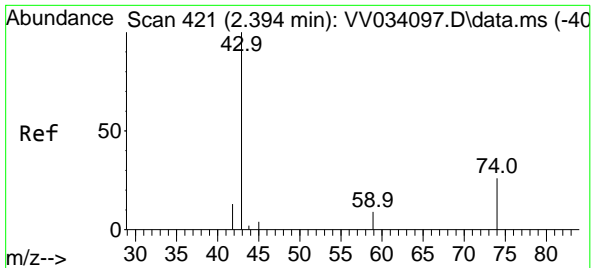
Tgt Ion: 64 Resp: 1611
 Ion Ratio Lower Upper
 64 100
 66 28.0 22.0 41.0



#9
 Trichlorofluoromethane
 Concen: 0.171 ug/L
 RT: 1.671 min Scan# 196
 Delta R.T. -0.042 min
 Lab File: VV034117.D
 Acq: 09 Feb 2024 17:15

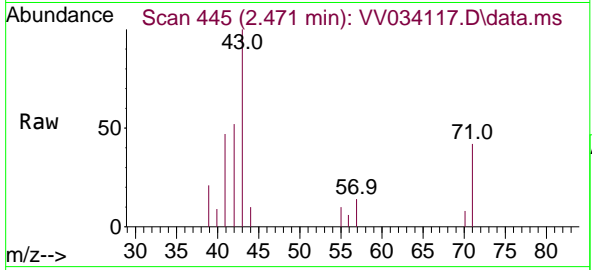
Tgt Ion: 101 Resp: 1707
 Ion Ratio Lower Upper
 101 100
 103 70.3 51.0 76.4



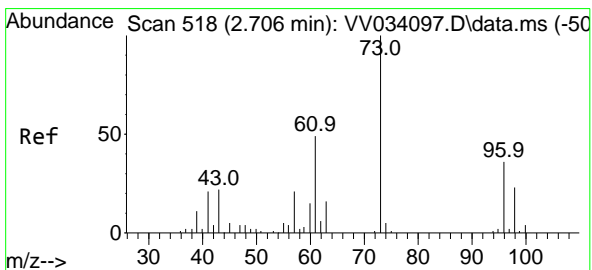
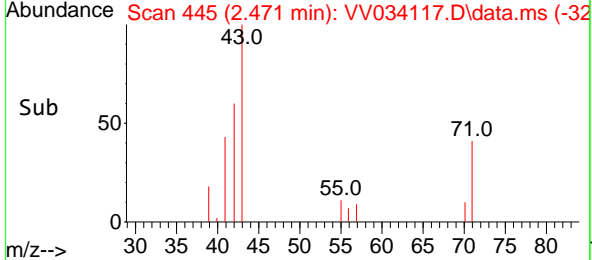
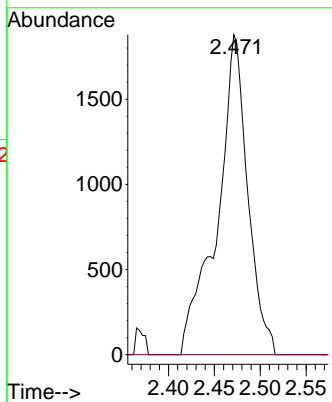


#15
 Methyl Acetate
 Concen: 2.562 ug/L
 RT: 2.471 min Scan# 445
 Delta R.T. 0.077 min
 Lab File: VV034117.D
 Acq: 09 Feb 2024 17:15

Instrument : MSVOA_V
 ClientSampleId :

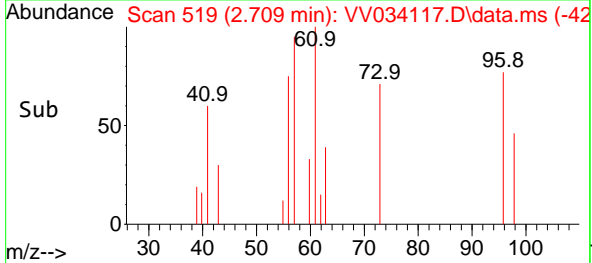
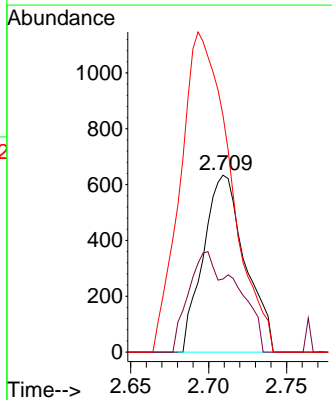
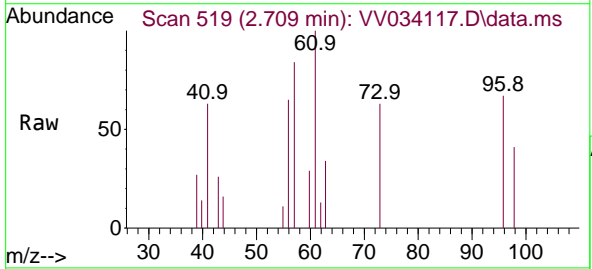


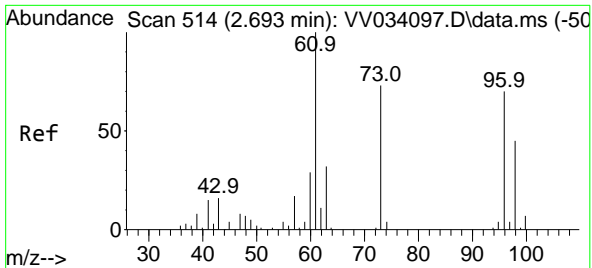
Tgt Ion: 43 Resp: 4345
 Ion Ratio Lower Upper
 43 100
 74 0.0 18.2 27.4#



#17
 Methyl tert-butyl Ether
 Concen: 0.114 ug/L
 RT: 2.709 min Scan# 519
 Delta R.T. 0.003 min
 Lab File: VV034117.D
 Acq: 09 Feb 2024 17:15

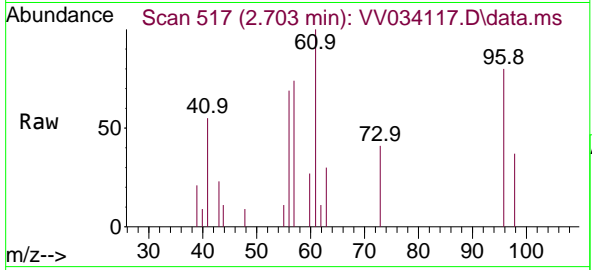
Tgt Ion: 73 Resp: 1183
 Ion Ratio Lower Upper
 73 100
 43 42.2 17.7 26.5#
 57 216.7 17.9 26.9#



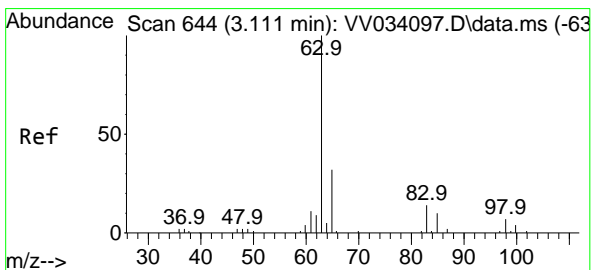
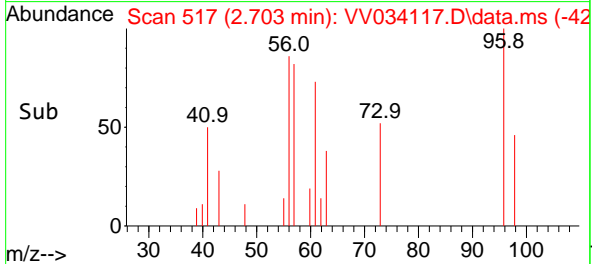
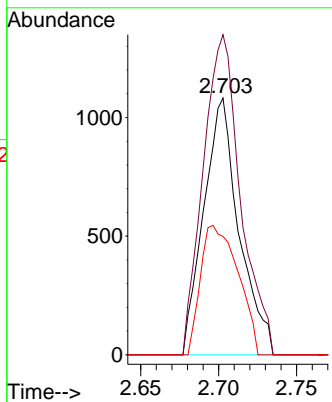


#18
 trans-1,2-Dichloroethene
 Concen: 0.330 ug/L
 RT: 2.703 min Scan# 514
 Delta R.T. 0.010 min
 Lab File: VV034117.D
 Acq: 09 Feb 2024 17:15

Instrument : MSVOA_V
 ClientSampleId :

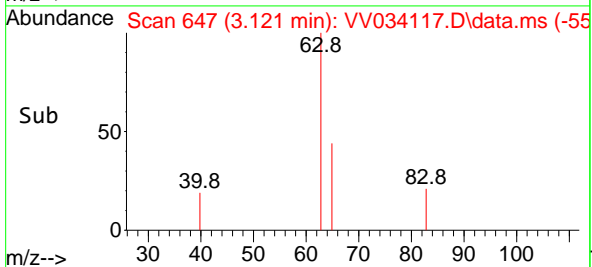
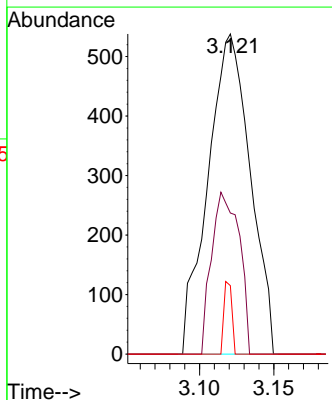
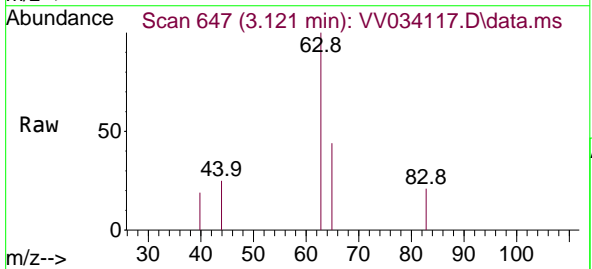


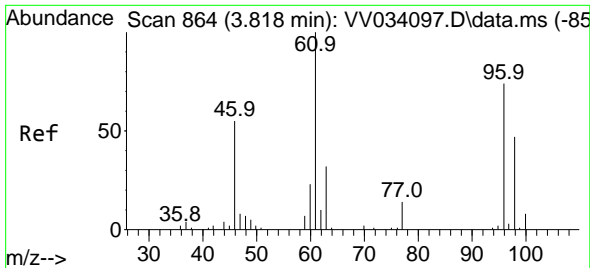
Tgt Ion: 96 Resp: 1706
 Ion Ratio Lower Upper
 96 100
 61 124.8 97.6 181.4
 98 46.2 44.4 82.5



#19
 1,1-Dichloroethane
 Concen: 0.113 ug/L
 RT: 3.121 min Scan# 647
 Delta R.T. 0.010 min
 Lab File: VV034117.D
 Acq: 09 Feb 2024 17:15

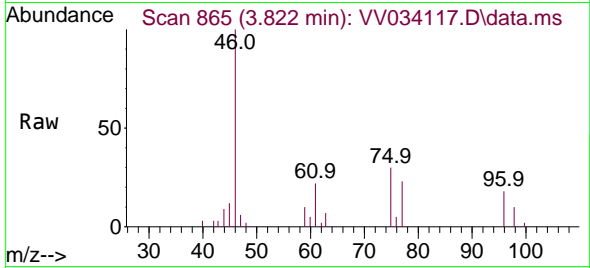
Tgt Ion: 63 Resp: 1068
 Ion Ratio Lower Upper
 63 100
 65 44.1 20.8 38.6#
 83 21.4 9.4 17.4#



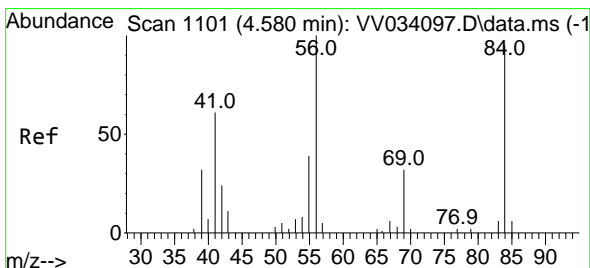
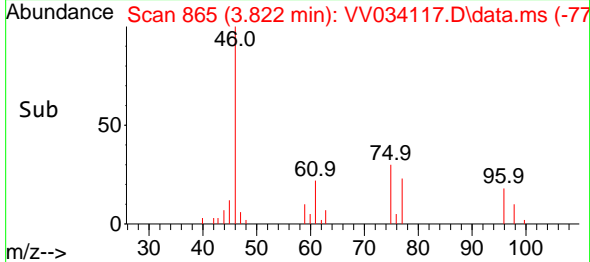
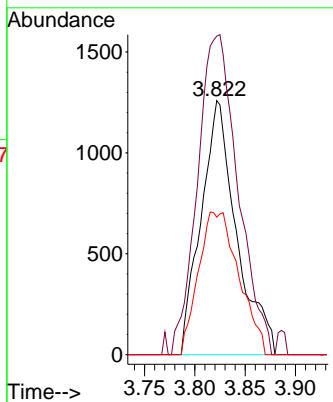


#22
 cis-1,2-Dichloroethene
 Concen: 0.527 ug/L
 RT: 3.822 min Scan# 80
 Delta R.T. 0.003 min
 Lab File: VV034117.D
 Acq: 09 Feb 2024 17:15

Instrument :
 MSVOA_V
 ClientSampleId :

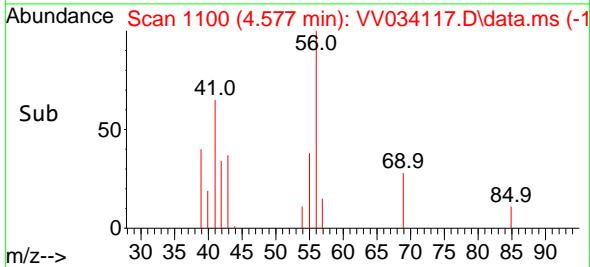
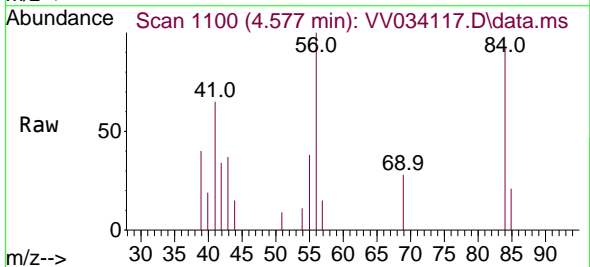
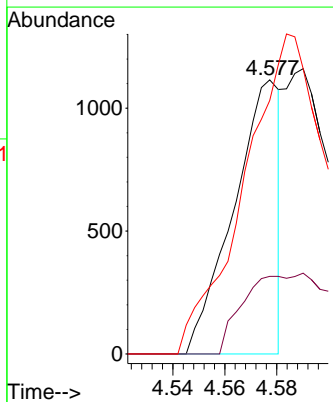


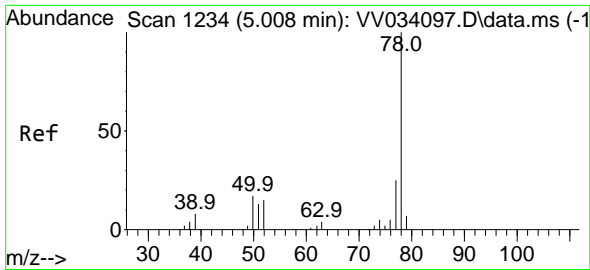
Tgt Ion: 96 Resp: 3086
 Ion Ratio Lower Upper
 96 100
 61 125.4 90.3 167.7
 98 54.1 43.2 80.2



#30
 Cyclohexane
 Concen: 0.155 ug/L
 RT: 4.577 min Scan# 1100
 Delta R.T. -0.003 min
 Lab File: VV034117.D
 Acq: 09 Feb 2024 17:15

Tgt Ion: 56 Resp: 1371
 Ion Ratio Lower Upper
 56 100
 69 28.7 24.2 36.2
 84 223.9 70.0 105.0#

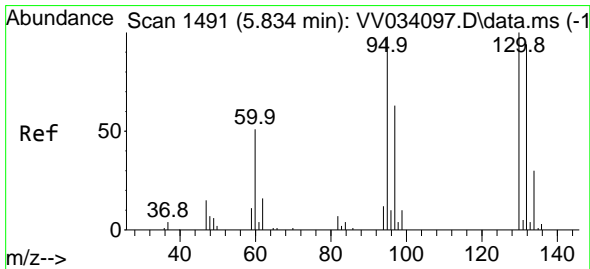
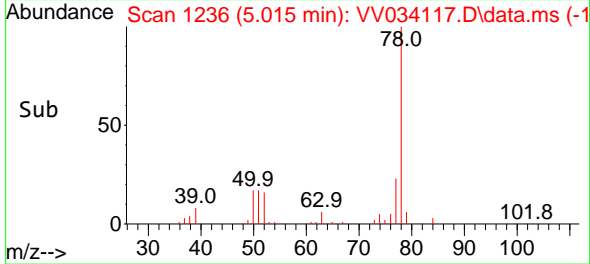
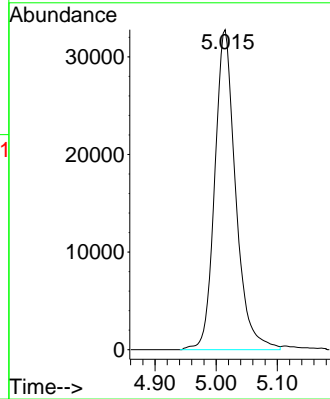
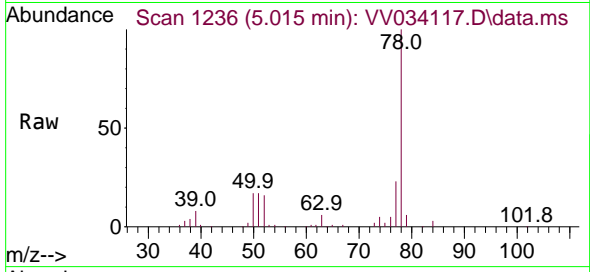




#33
Benzene
Concen: 3.844 ug/L
RT: 5.015 min Scan# 11
Delta R.T. 0.006 min
Lab File: VV034117.D
Acq: 09 Feb 2024 17:15

Instrument :
MSVOA_V
ClientSampleId :

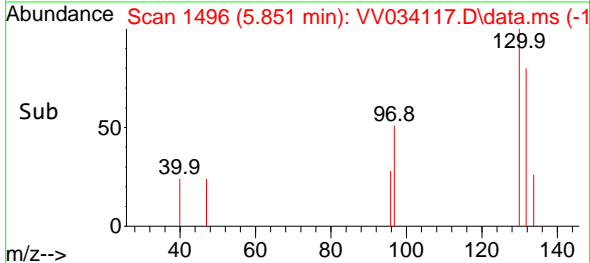
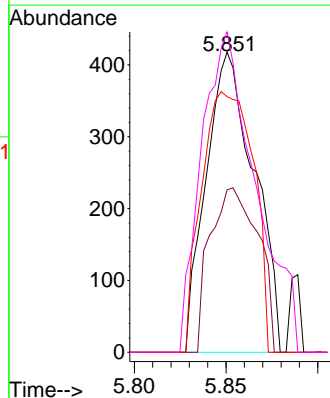
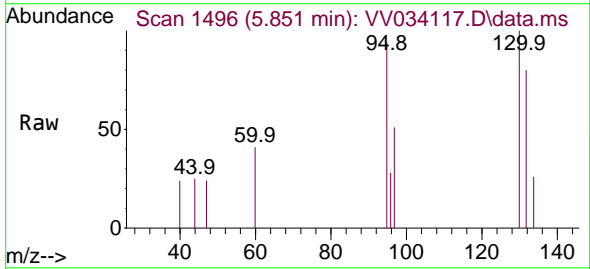
Tgt Ion: 78 Resp: 77892

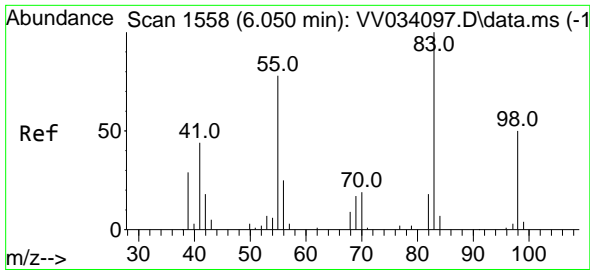


#34
Trichloroethene
Concen: 0.130 ug/L
RT: 5.851 min Scan# 1496
Delta R.T. 0.016 min
Lab File: VV034117.D
Acq: 09 Feb 2024 17:15

Tgt Ion: 95 Resp: 762

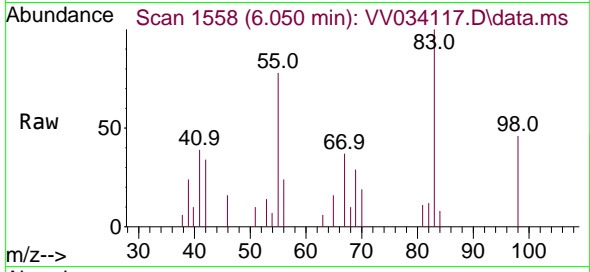
Ion	Ratio	Lower	Upper
95	100		
97	54.1	45.1	83.7
132	85.2	66.0	122.6
130	106.7	72.2	134.0





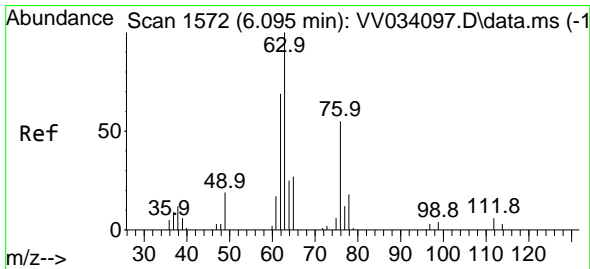
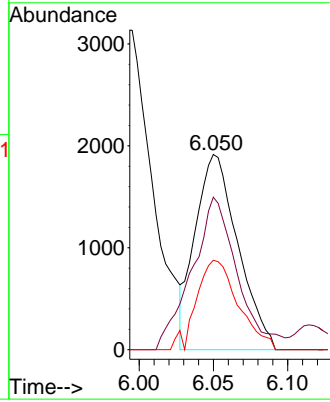
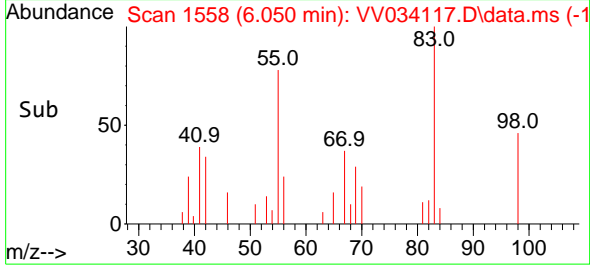
#35
 Methylcyclohexane
 Concen: 0.416 ug/L
 RT: 6.050 min Scan# 1558
 Delta R.T. 0.000 min
 Lab File: VV034117.D
 Acq: 09 Feb 2024 17:15

Instrument : MSVOA_V
 ClientSampleId :

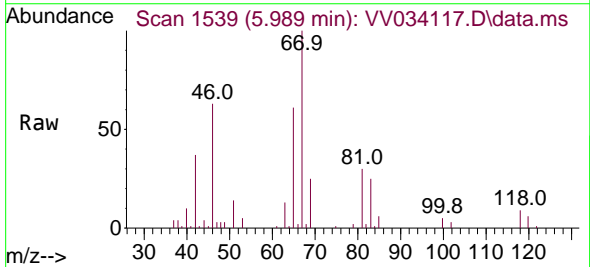


Tgt Ion: 83 Resp: 3833

Ion	Ratio	Lower	Upper
83	100		
55	83.1	63.5	95.3
98	44.8	39.0	58.4

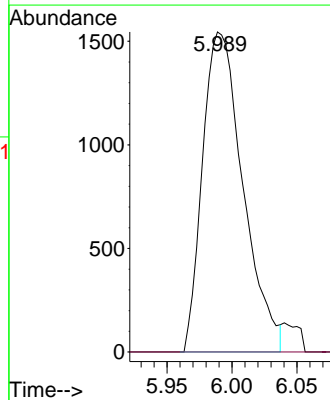
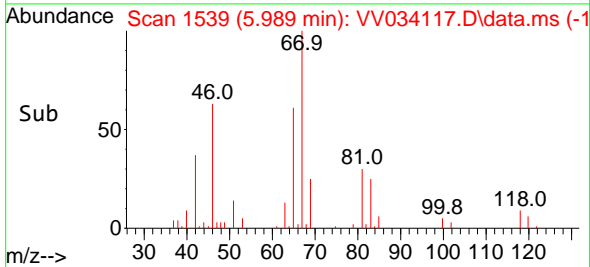


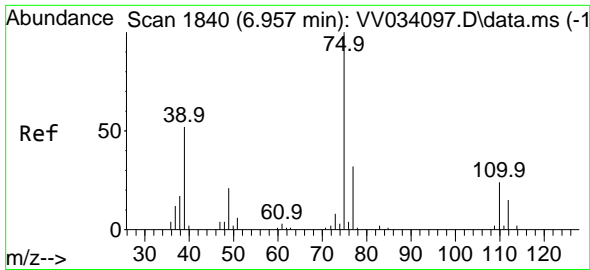
#37
 1,2-Dichloropropane
 Concen: 0.682 ug/L
 RT: 5.989 min Scan# 1539
 Delta R.T. -0.106 min
 Lab File: VV034117.D
 Acq: 09 Feb 2024 17:15



Tgt Ion: 63 Resp: 3345

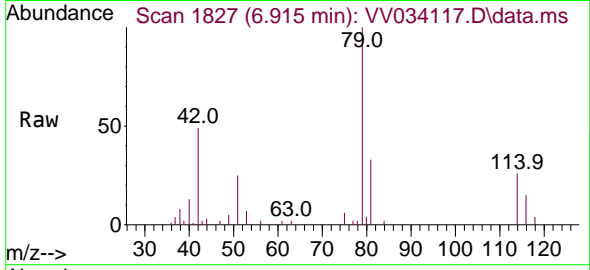
Ion	Ratio	Lower	Upper
63	100		
112	0.0	3.4	5.0#



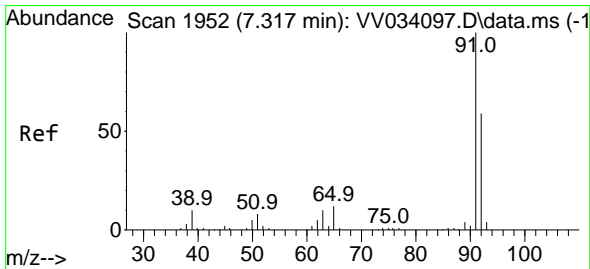
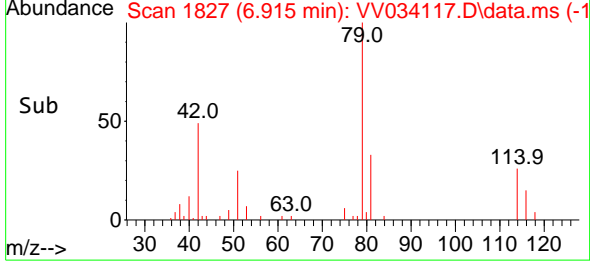
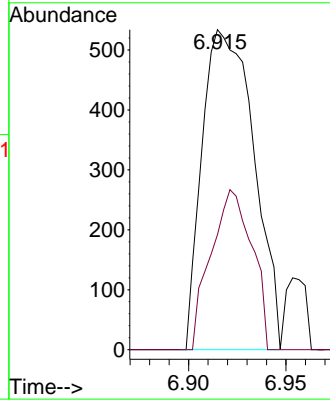


#39
 cis-1,3-Dichloropropene
 Concen: 0.132 ug/L
 RT: 6.915 min Scan# 1827
 Delta R.T. -0.042 min
 Lab File: VV034117.D
 Acq: 09 Feb 2024 17:15

Instrument : MSVOA_V
 ClientSampleId :

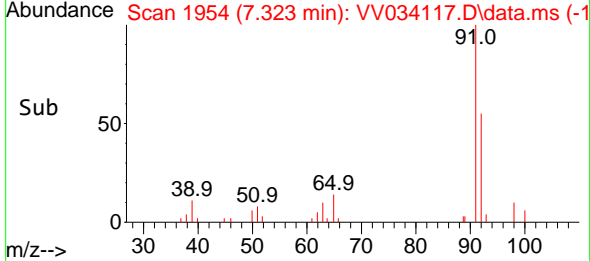
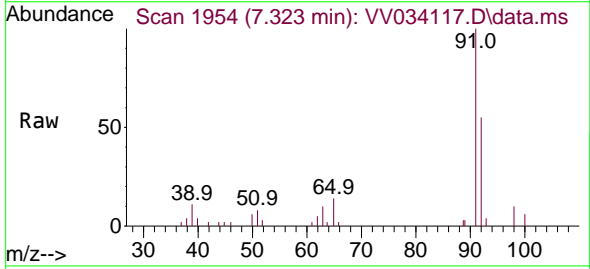
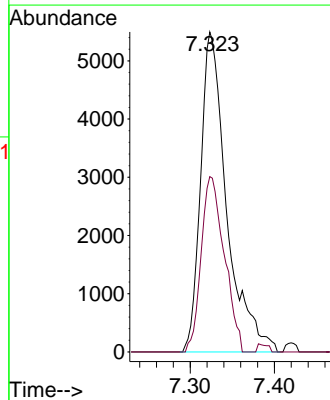


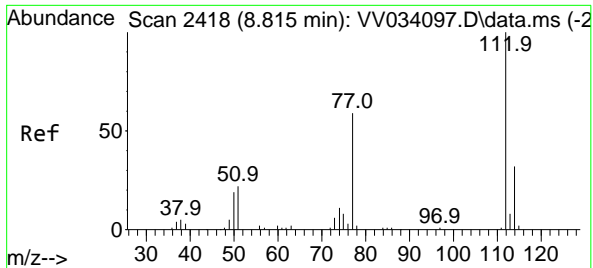
Tgt Ion: 75 Resp: 986
 Ion Ratio Lower Upper
 75 100
 77 36.0 22.9 42.5



#42
 Toluene
 Concen: 0.547 ug/L
 RT: 7.323 min Scan# 1954
 Delta R.T. 0.006 min
 Lab File: VV034117.D
 Acq: 09 Feb 2024 17:15

Tgt Ion: 91 Resp: 11838
 Ion Ratio Lower Upper
 91 100
 92 54.8 42.1 78.3



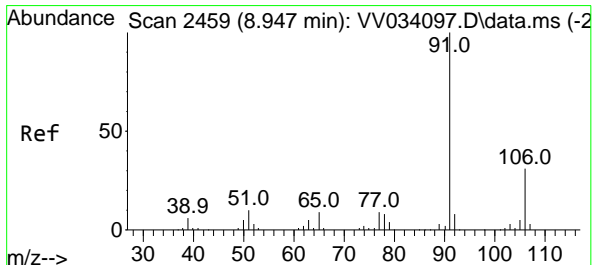
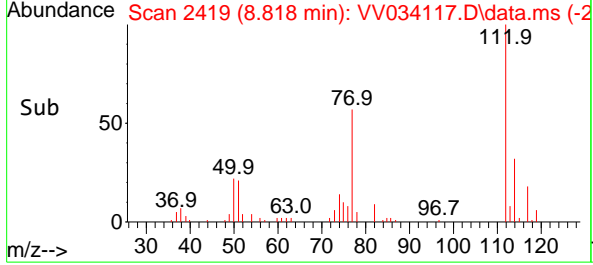
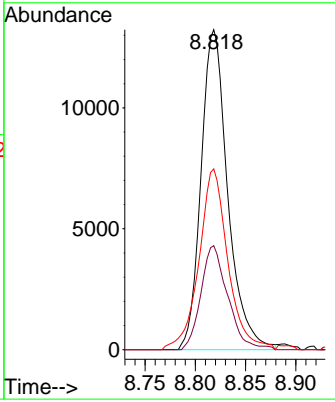
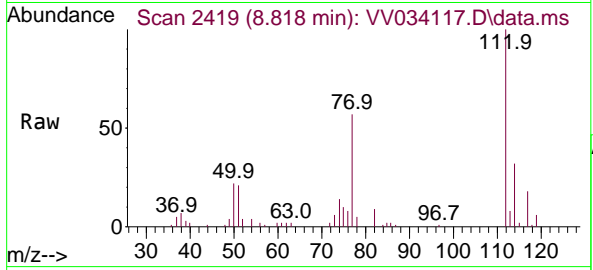


#51
 Chlorobenzene
 Concen: 1.787 ug/L
 RT: 8.818 min Scan# 2418
 Delta R.T. 0.003 min
 Lab File: VV034117.D
 Acq: 09 Feb 2024 17:15

Instrument : MSVOA_V
 ClientSampleId :

Tgt Ion:112 Resp: 24470

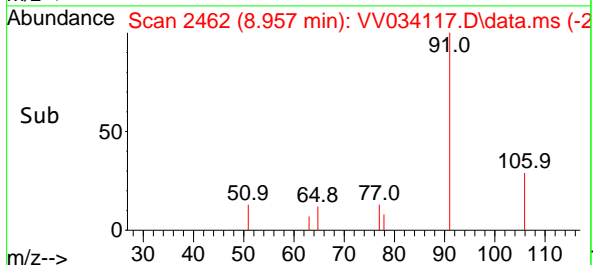
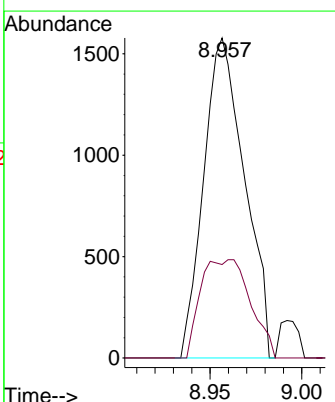
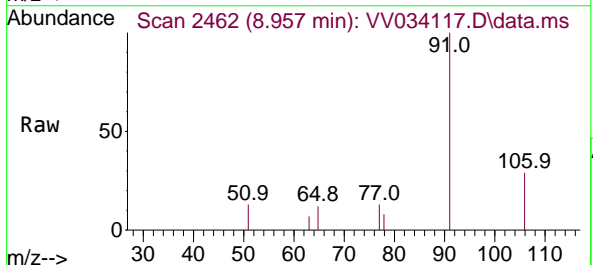
Ion	Ratio	Lower	Upper
112	100		
114	32.5	22.5	41.7
77	56.5	48.1	72.1

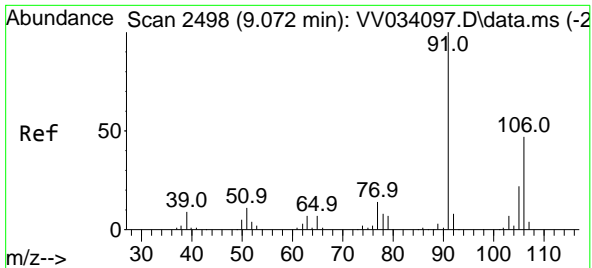


#52
 Ethylbenzene
 Concen: 0.098 ug/L
 RT: 8.957 min Scan# 2462
 Delta R.T. 0.010 min
 Lab File: VV034117.D
 Acq: 09 Feb 2024 17:15

Tgt Ion: 91 Resp: 2448

Ion	Ratio	Lower	Upper
91	100		
106	29.2	21.4	39.8

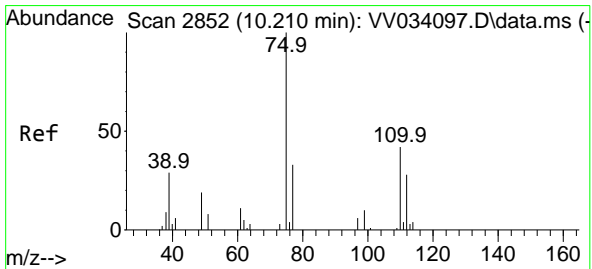
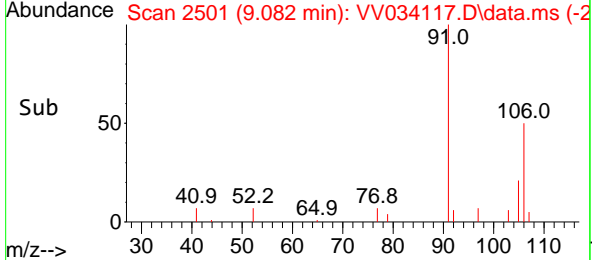
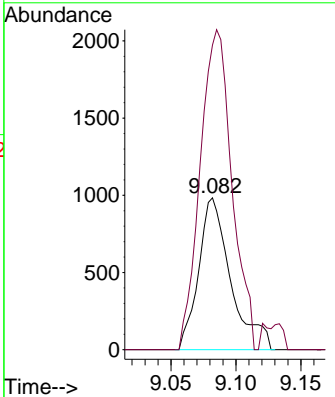
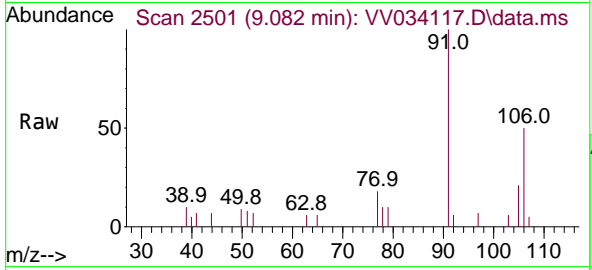




#53
 m,p-Xylene
 Concen: 0.179 ug/L
 RT: 9.082 min Scan# 21
 Delta R.T. 0.010 min
 Lab File: VV034117.D
 Acq: 09 Feb 2024 17:15

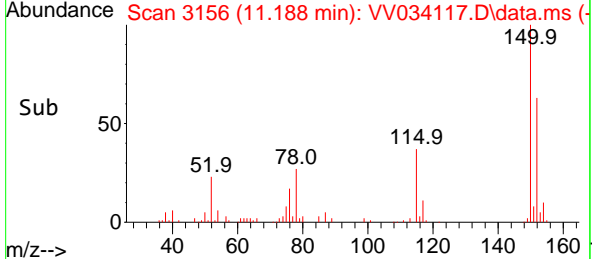
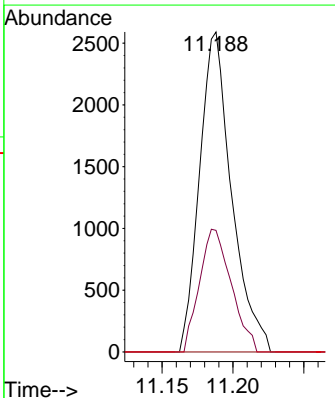
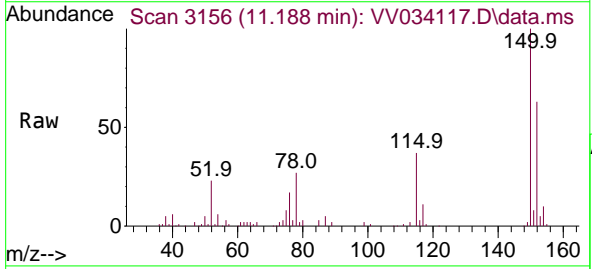
Instrument : MSVOA_V
 ClientSampleId :

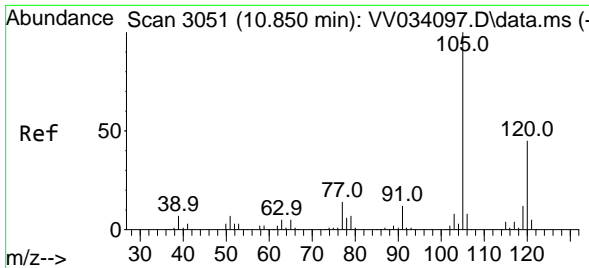
Tgt Ion:106 Resp: 1689
 Ion Ratio Lower Upper
 106 100
 91 200.6 147.5 273.9



#61
 1,2,3-Trichloropropane
 Concen: 1.697 ug/L
 RT: 11.188 min Scan# 3156
 Delta R.T. 0.977 min
 Lab File: VV034117.D
 Acq: 09 Feb 2024 17:15

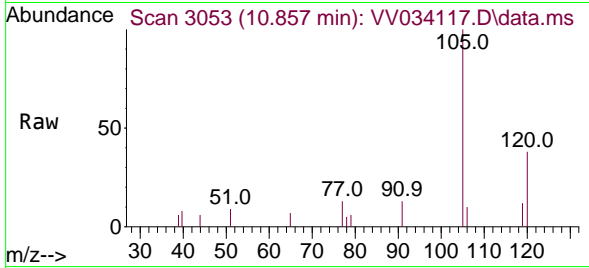
Tgt Ion: 75 Resp: 4068
 Ion Ratio Lower Upper
 75 100
 77 38.1 26.9 40.3
 110 0.0 33.3 49.9#



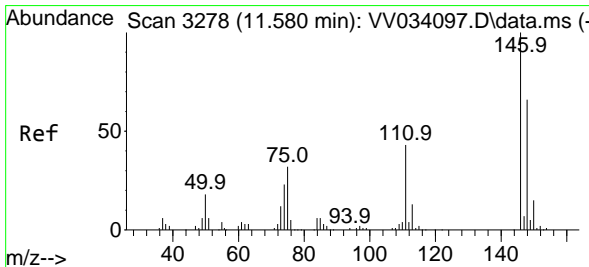
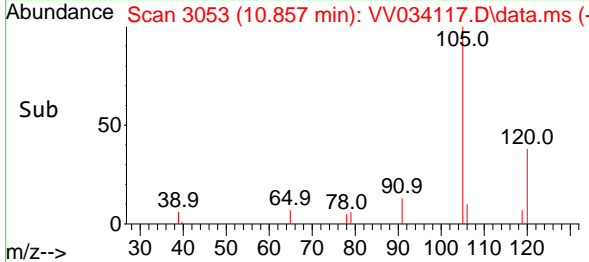
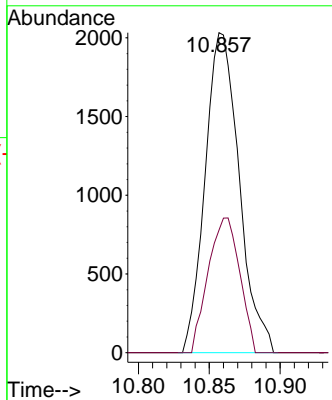


#63
 1,2,4-Trimethylbenzene
 Concen: 0.160 ug/L
 RT: 10.857 min Scan# 3053
 Delta R.T. 0.006 min
 Lab File: VV034117.D
 Acq: 09 Feb 2024 17:15

Instrument : MSVOA_V
 ClientSampleId :



Tgt Ion:105 Resp: 3393
 Ion Ratio Lower Upper
 105 100
 120 38.9 36.2 54.2



#67
 1,2-Dichlorobenzene
 Concen: 0.163 ug/L
 RT: 11.580 min Scan# 3278
 Delta R.T. 0.000 min
 Lab File: VV034117.D
 Acq: 09 Feb 2024 17:15

Tgt Ion:146 Resp: 1574
 Ion Ratio Lower Upper
 146 100
 111 61.3 31.2 46.8#
 148 67.7 49.8 74.8

