

Data Path : Z:\voasrv\HPCHEM1\MSVOA_V\Data\VW021522\
 Data File : VW024670.D
 Acq On : 15 Feb 2022 15:44
 Operator : SY/MD
 Sample : N1545-01
 Misc : 25.0mL/MSVOA_V/WATER
 ALS Vial : 8 Sample Multiplier: 1

Instrument :
 MSVOA_V
 ClientSampleId :

Quant Time: Feb 16 03:38:34 2022
 Quant Method : Z:\voasrv\HPCHEM1\MSVOA_V\Method\SFAMVTR020922WMA.M
 Quant Title : TRACE VOA SFAM1.0
 QLast Update : Wed Feb 16 03:37:12 2022
 Response via : Initial Calibration

Compound	R.T.	QIon	Response	Conc	Units	Dev(Min)
Internal Standards						
1) 1,4-Difluorobenzene	5.616	114	114722	5.000	ug/L	0.00
28) Chlorobenzene-d5	8.850	117	115599	5.000	ug/L	0.00
58) 1,4-Dichlorobenzene-d4	11.246	152	59067	5.000	ug/L	0.00
System Monitoring Compounds						
4) Vinyl Chloride-d3	1.307	65	40178	4.178	ug/L	0.00
Spiked Amount	5.000	Range 40 - 130	Recovery	=	83.600%	
7) Chloroethane-d5	1.568	69	39852	4.902	ug/L	0.00
Spiked Amount	5.000	Range 65 - 130	Recovery	=	98.000%	
11) 1,1-Dichloroethene-d2	2.108	63	65580	3.118	ug/L	0.00
Spiked Amount	5.000	Range 60 - 125	Recovery	=	62.400%	
20) 2-Butanone-d5	3.902	46	85948	53.839	ug/L	0.00
Spiked Amount	50.000	Range 40 - 130	Recovery	=	107.680%	
24) Chloroform-d	4.349	84	84998	5.022	ug/L	0.00
Spiked Amount	5.000	Range 70 - 125	Recovery	=	100.400%	
26) 1,2-Dichloroethane-d4	5.034	65	40768	5.309	ug/L	0.00
Spiked Amount	5.000	Range 70 - 130	Recovery	=	106.200%	
32) Benzene-d6	5.050	84	171405	5.226	ug/L	0.00
Spiked Amount	5.000	Range 70 - 125	Recovery	=	104.600%	
36) 1,2-Dichloropropane-d6	6.069	67	53411	5.236	ug/L	0.00
Spiked Amount	5.000	Range 60 - 140	Recovery	=	104.800%	
41) Toluene-d8	7.317	98	151212	4.943	ug/L	0.00
Spiked Amount	5.000	Range 70 - 130	Recovery	=	98.800%	
43) trans-1,3-Dichloroprop...	7.625	79	17934	4.353	ug/L	0.00
Spiked Amount	5.000	Range 55 - 130	Recovery	=	87.000%	
46) 2-Hexanone-d5	8.088	63	75788	52.217	ug/L	0.00
Spiked Amount	50.000	Range 45 - 130	Recovery	=	104.440%	
56) 1,1,2,2-Tetrachloroeth...	10.217	84	31637	5.209	ug/L	0.00
Spiked Amount	5.000	Range 65 - 120	Recovery	=	104.200%	
66) 1,2-Dichlorobenzene-d4	11.622	152	48389	5.082	ug/L	0.00
Spiked Amount	5.000	Range 80 - 120	Recovery	=	101.600%	
Target Compounds						
12) 1,1-Dichloroethene	2.114	96	1565	0.132	ug/L #	1
13) Acetone	2.195	43	6440	5.112	ug/L	69
17) Methyl tert-butyl Ether	2.767	73	1698	0.069	ug/L #	1
19) 1,1-Dichloroethane	3.191	63	21464	1.065	ug/L	96
22) cis-1,2-Dichloroethene	3.915	96	5687	0.483	ug/L	98
25) Chloroform	4.381	83	17620	0.835	ug/L	98
27) 1,2-Dichloroethane	5.053	62	955	0.083	ug/L #	73
33) Benzene	5.098	78	4374	0.097	ug/L	100
34) Trichloroethene	5.915	95	32047	2.580	ug/L	91
35) Methylcyclohexane	6.069	83	12750	0.620	ug/L #	22
37) 1,2-Dichloropropane	6.066	63	5602	0.512	ug/L #	84
38) Bromodichloromethane	6.510	83	7283	0.501	ug/L #	94
39) cis-1,3-Dichloropropene	6.989	75	1569	0.094	ug/L #	60
47) Tetrachloroethene	7.976	164	13658	1.657	ug/L	93
49) Dibromochloromethane	8.243	129	5148	0.602	ug/L	92
52) Ethylbenzene	9.024	91	2027	0.037	ug/L	99
53) m,p-xylene	9.143	106	1190	0.057	ug/L	98
59) Bromoform	9.735	173	1216	0.322	ug/L #	89
61) 1,2,3-Trichloropropane	11.246	75	7990	1.372	ug/L #	64

Data Path : Z:\voasrv\HPCHEM1\MSVOA_V\Data\VW021522\
Data File : VW024670.D
Acq On : 15 Feb 2022 15:44
Operator : SY/MD
Sample : N1545-01
Misc : 25.0mL/MSVOA_V/WATER
ALS Vial : 8 Sample Multiplier: 1

Instrument :
MSVOA_V
ClientSampleId :

Quant Time: Feb 16 03:38:34 2022
Quant Method : Z:\voasrv\HPCHEM1\MSVOA_V\Method\SFAMVTR020922WMA.M
Quant Title : TRACE VOA SFAM1.0
QLast Update : Wed Feb 16 03:37:12 2022
Response via : Initial Calibration

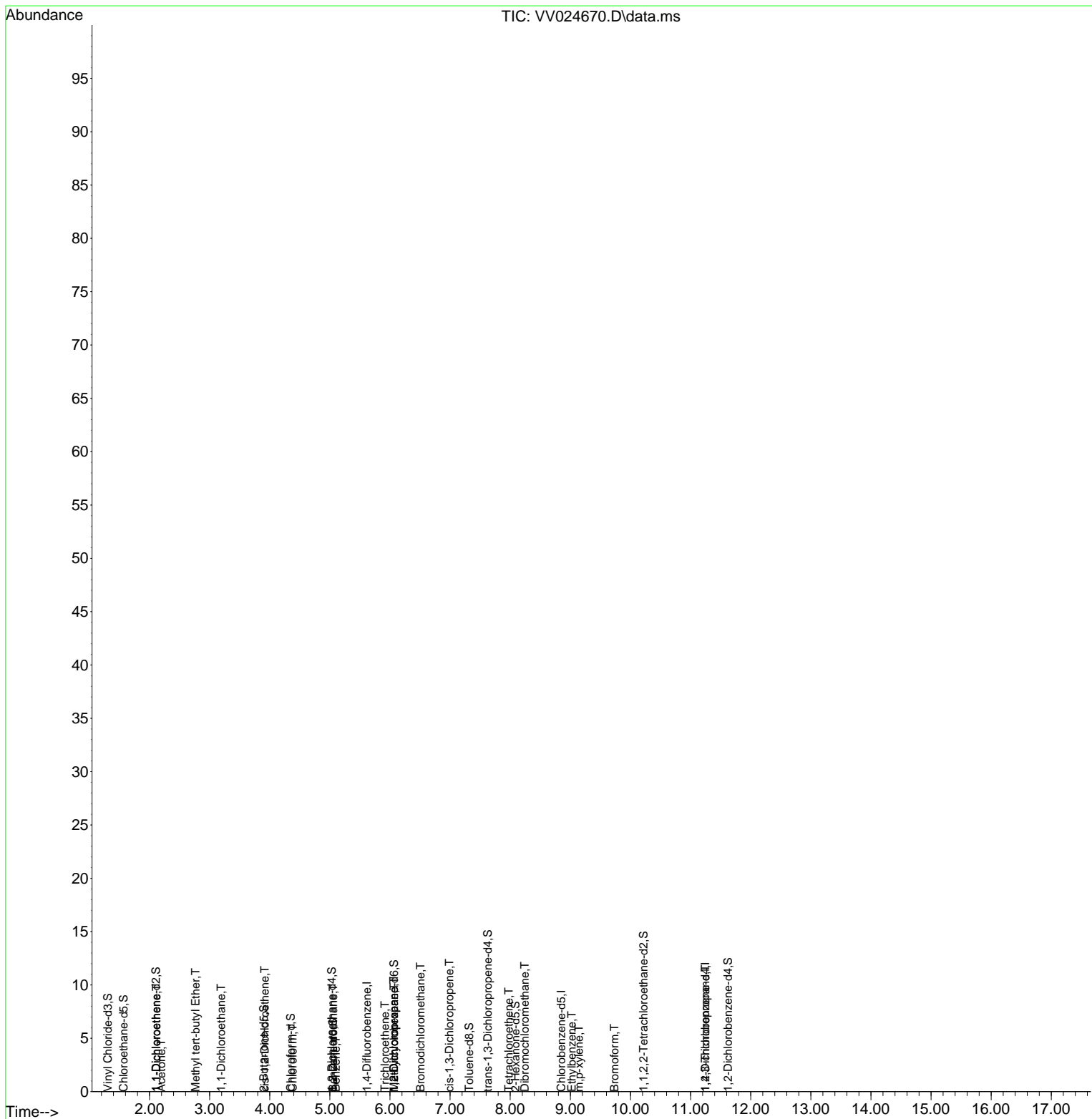
Compound	R.T.	QIon	Response	Conc	Units	Dev(Min)
----------	------	------	----------	------	-------	----------

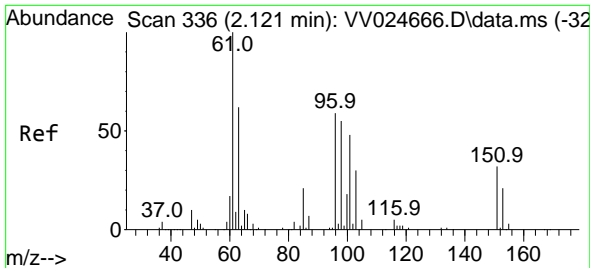
(#) = qualifier out of range (m) = manual integration (+) = signals summed

Data Path : Z:\voasrv\HPCHEM1\MSVOA_V\Data\VV021522\
 Data File : VV024670.D
 Acq On : 15 Feb 2022 15:44
 Operator : SY/MD
 Sample : N1545-01
 Misc : 25.0mL/MSVOA_V/WATER
 ALS Vial : 8 Sample Multiplier: 1

Instrument :
 MSVOA_V
 ClientSampleId :

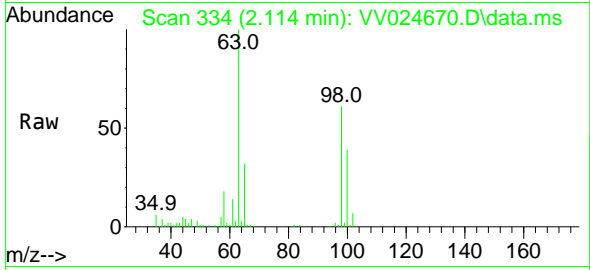
Quant Time: Feb 16 03:38:34 2022
 Quant Method : Z:\voasrv\HPCHEM1\MSVOA_V\Method\SFAMVTR020922WMA.M
 Quant Title : TRACE VOA SFAM1.0
 QLast Update : Wed Feb 16 03:37:12 2022
 Response via : Initial Calibration



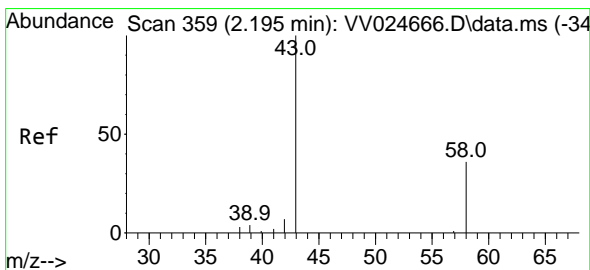
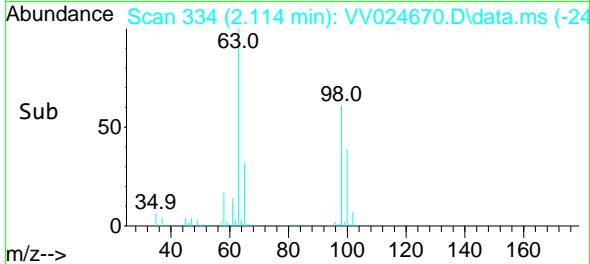
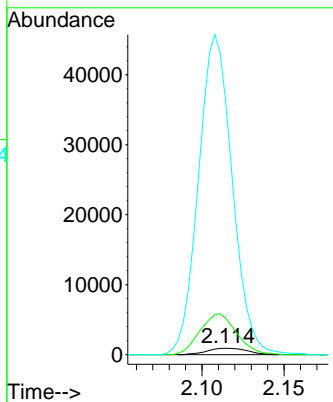


#12
 1,1-Dichloroethene
 Concen: 0.132 ug/L
 RT: 2.114 min Scan# 311
 Delta R.T. -0.006 min
 Lab File: VV024670.D
 Acq: 15 Feb 2022 15:44

Instrument : MSVOA_V
 ClientSampleId :

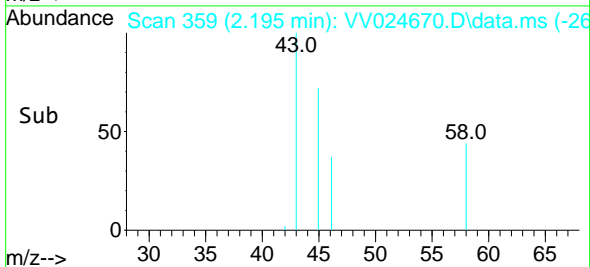
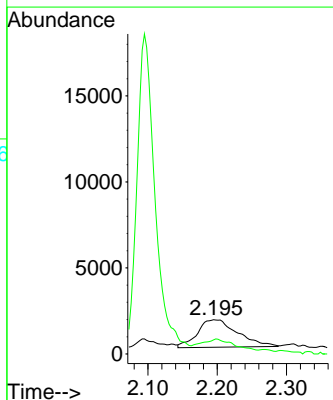
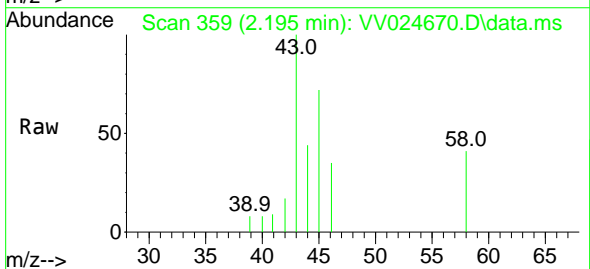


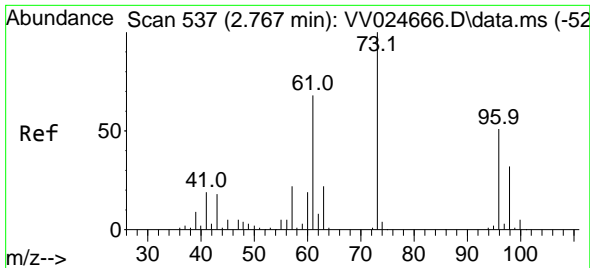
Tgt Ion: 96 Resp: 1565
 Ion Ratio Lower Upper
 96 100
 61 580.3 116.1 215.5#
 63 4029.1 79.4 147.4#



#13
 Acetone
 Concen: 5.112 ug/L
 RT: 2.195 min Scan# 359
 Delta R.T. 0.000 min
 Lab File: VV024670.D
 Acq: 15 Feb 2022 15:44

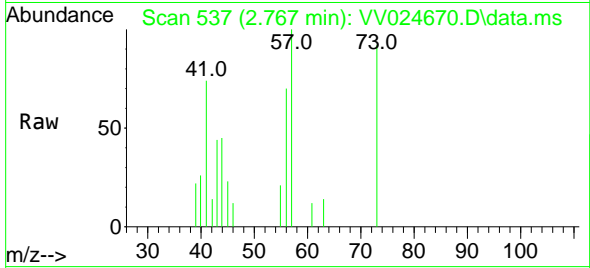
Tgt Ion: 43 Resp: 6440
 Ion Ratio Lower Upper
 43 100
 58 35.2 0.0 41.4



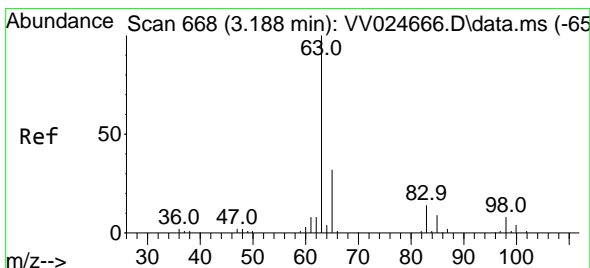
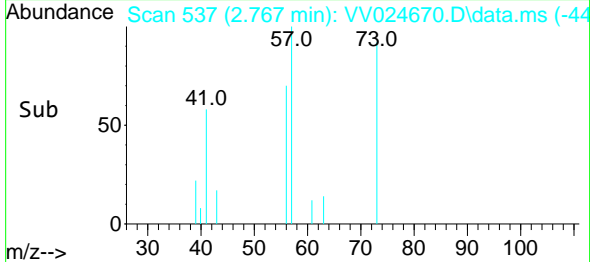
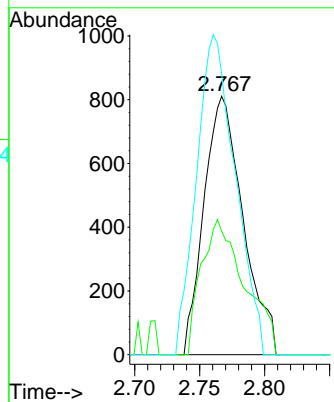


#17
 Methyl tert-butyl Ether
 Concen: 0.069 ug/L
 RT: 2.767 min Scan# 51
 Delta R.T. 0.000 min
 Lab File: VV024670.D
 Acq: 15 Feb 2022 15:44

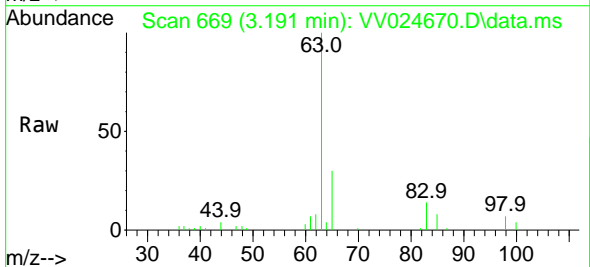
Instrument :
 MSVOA_V
 ClientSampleId :



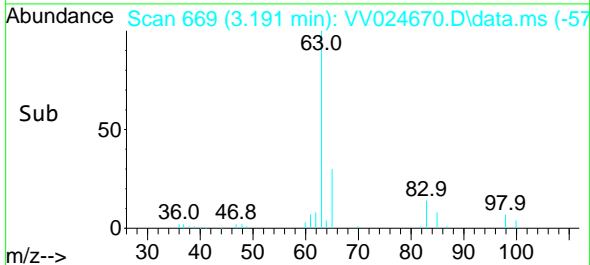
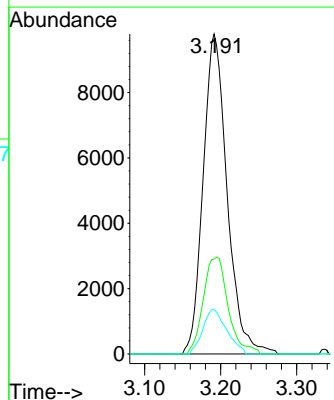
Tgt Ion: 73 Resp: 1698
 Ion Ratio Lower Upper
 73 100
 43 58.1 15.5 23.3#
 57 122.7 17.1 25.7#

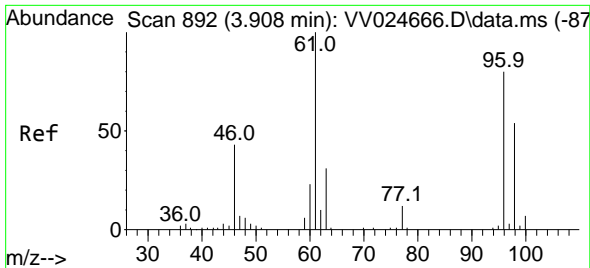


#19
 1,1-Dichloroethane
 Concen: 1.065 ug/L
 RT: 3.191 min Scan# 669
 Delta R.T. 0.003 min
 Lab File: VV024670.D
 Acq: 15 Feb 2022 15:44



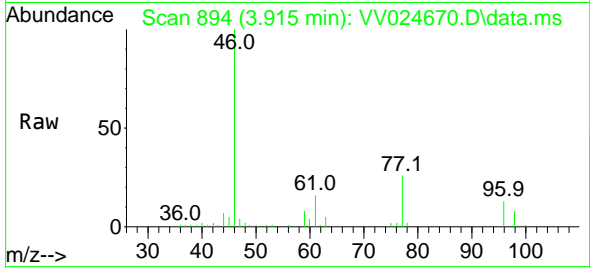
Tgt Ion: 63 Resp: 21464
 Ion Ratio Lower Upper
 63 100
 65 29.6 22.3 41.3
 83 13.8 10.7 19.9



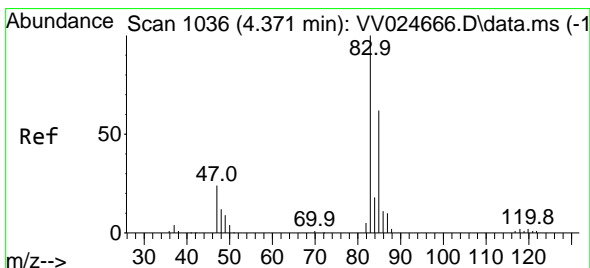
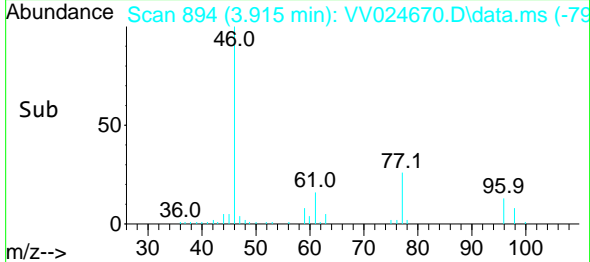
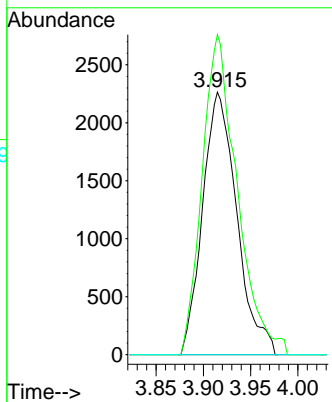


#22
 cis-1,2-Dichloroethene
 Concen: 0.483 ug/L
 RT: 3.915 min Scan# 894
 Delta R.T. 0.007 min
 Lab File: VV024670.D
 Acq: 15 Feb 2022 15:44

Instrument : MSVOA_V
 ClientSampleId :

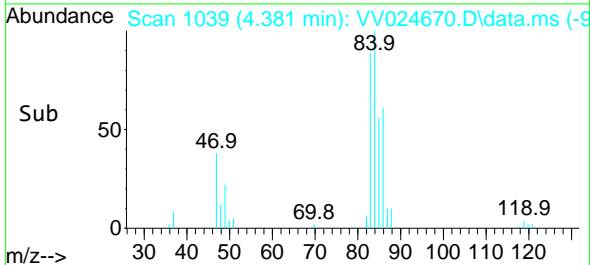
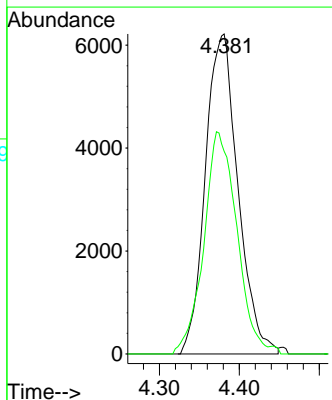
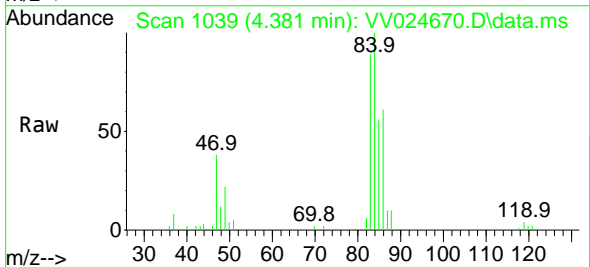


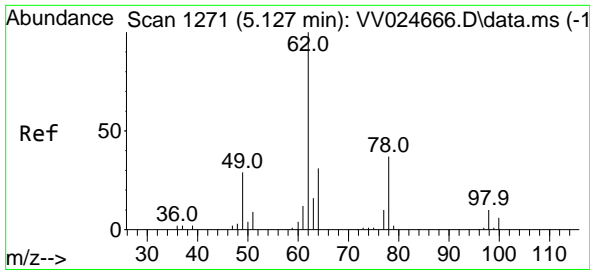
Tgt Ion: 96 Resp: 5687
 Ion Ratio Lower Upper
 96 100
 61 121.9 83.4 154.8
 68 0.0 0.0 0.0



#25
 Chloroform
 Concen: 0.835 ug/L
 RT: 4.381 min Scan# 1039
 Delta R.T. 0.010 min
 Lab File: VV024670.D
 Acq: 15 Feb 2022 15:44

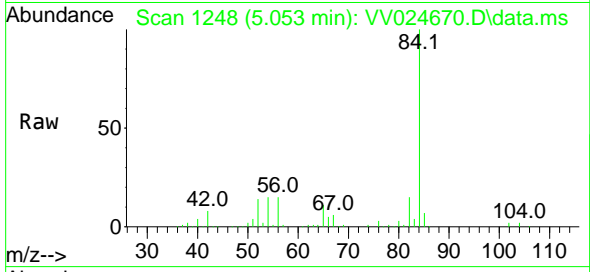
Tgt Ion: 83 Resp: 17620
 Ion Ratio Lower Upper
 83 100
 85 63.3 45.2 84.0



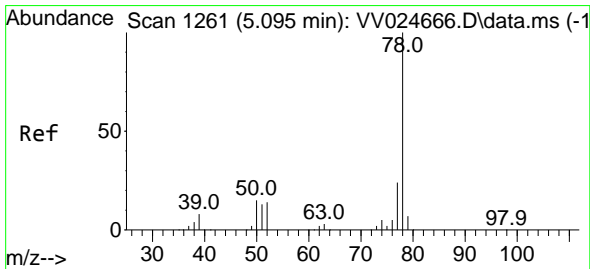
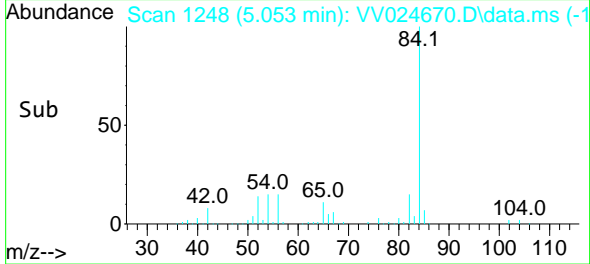
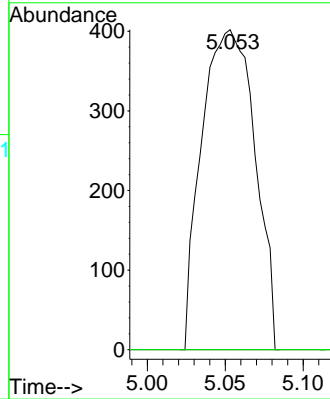


#27
 1,2-Dichloroethane
 Concen: 0.083 ug/L
 RT: 5.053 min Scan# 11
 Delta R.T. -0.074 min
 Lab File: VV024670.D
 Acq: 15 Feb 2022 15:44

Instrument :
 MSVOA_V
 ClientSampleId :

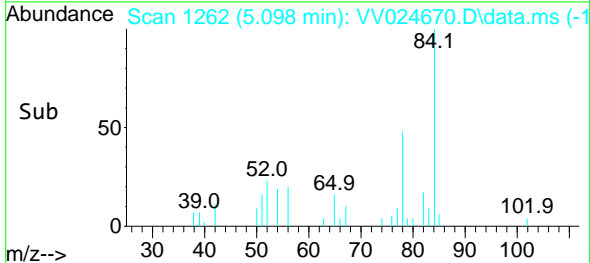
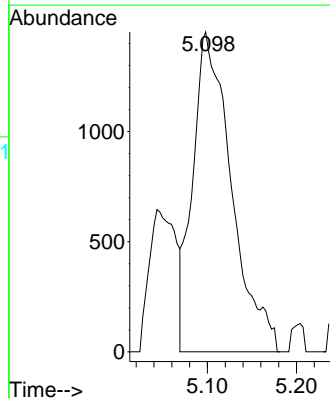
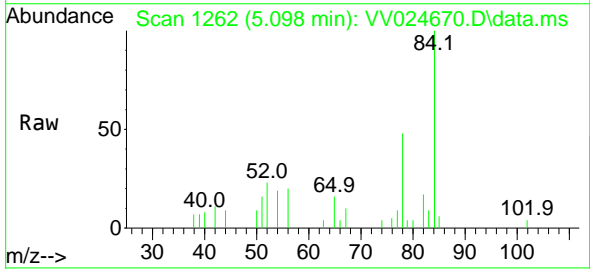


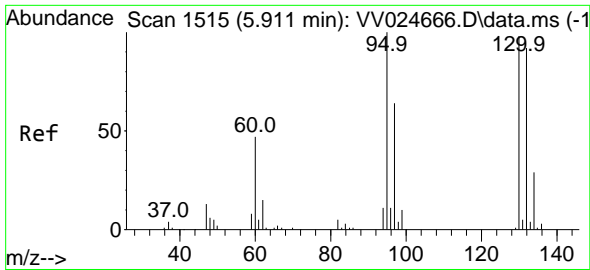
Tgt Ion: 62 Resp: 955
 Ion Ratio Lower Upper
 62 100
 98 0.0 8.1 12.1#



#33
 Benzene
 Concen: 0.097 ug/L
 RT: 5.098 min Scan# 1262
 Delta R.T. 0.003 min
 Lab File: VV024670.D
 Acq: 15 Feb 2022 15:44

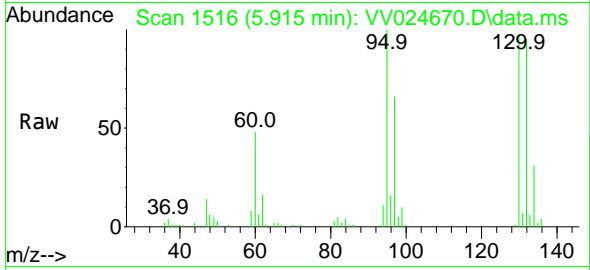
Tgt Ion: 78 Resp: 4374



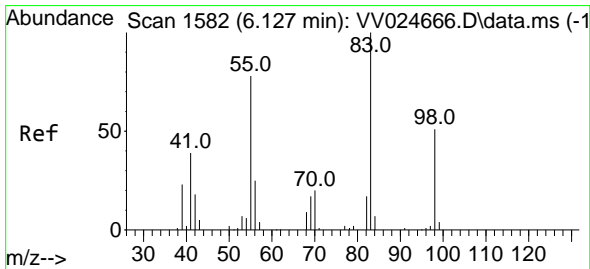
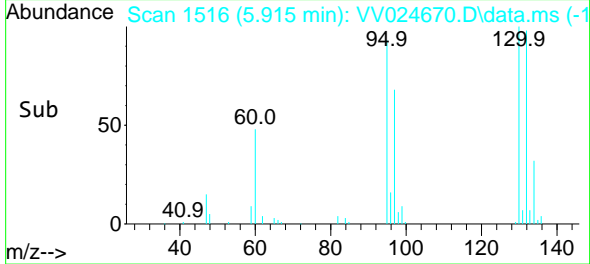
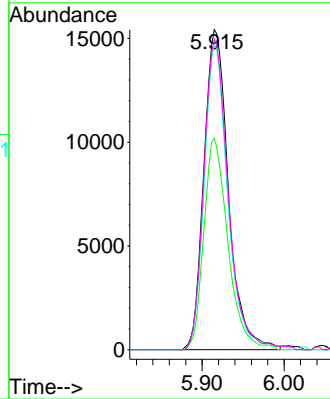


#34
 Trichloroethene
 Concen: 2.580 ug/L
 RT: 5.915 min Scan# 1515
 Delta R.T. 0.003 min
 Lab File: VV024670.D
 Acq: 15 Feb 2022 15:44

Instrument : MSVOA_V
 ClientSampleId :

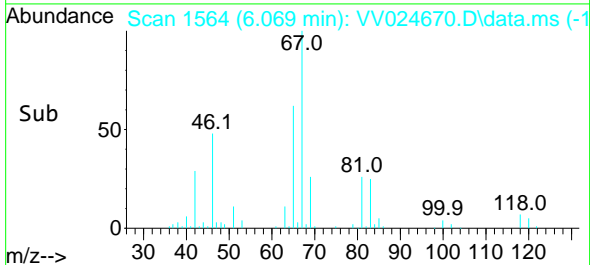
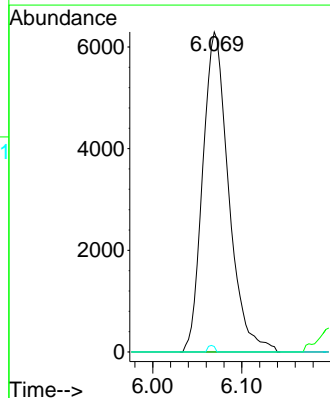
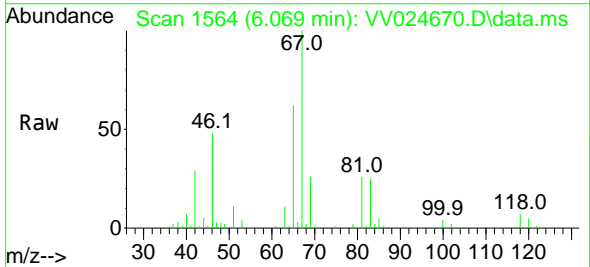


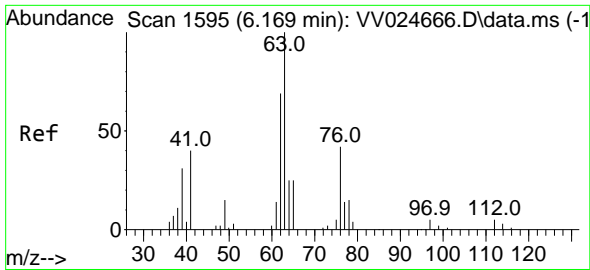
Tgt Ion: 95 Resp: 32047
 Ion Ratio Lower Upper
 95 100
 97 66.0 45.2 84.0
 132 95.3 76.1 141.3
 130 97.0 75.4 140.0



#35
 Methylcyclohexane
 Concen: 0.620 ug/L
 RT: 6.069 min Scan# 1564
 Delta R.T. -0.058 min
 Lab File: VV024670.D
 Acq: 15 Feb 2022 15:44

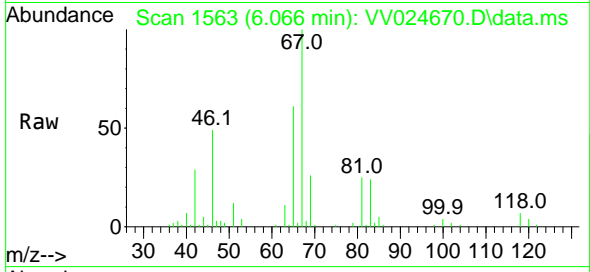
Tgt Ion: 83 Resp: 12750
 Ion Ratio Lower Upper
 83 100
 55 5.5 60.2 90.2#
 98 0.5 41.0 61.4#



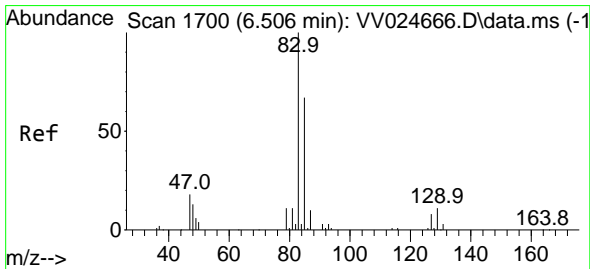
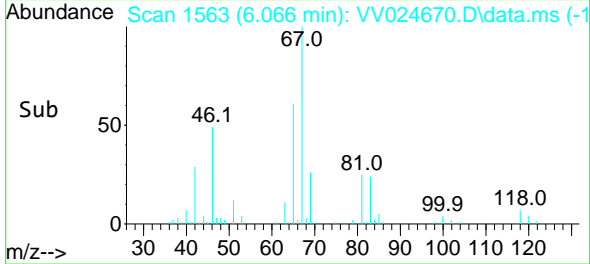
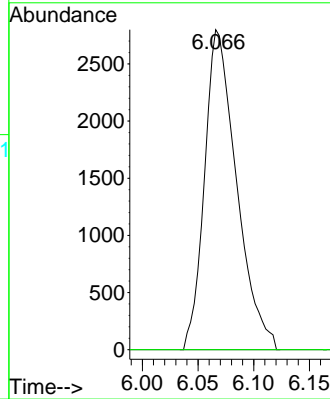


#37
 1,2-Dichloropropane
 Concen: 0.512 ug/L
 RT: 6.066 min Scan# 11
 Delta R.T. -0.103 min
 Lab File: VV024670.D
 Acq: 15 Feb 2022 15:44

Instrument :
 MSVOA_V
 ClientSampleId :

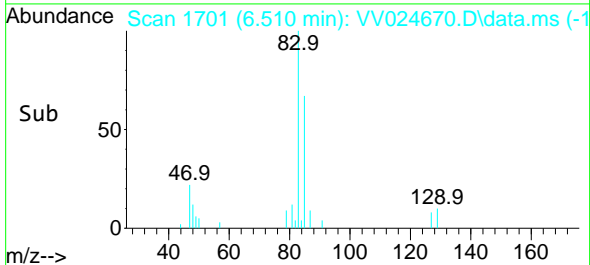
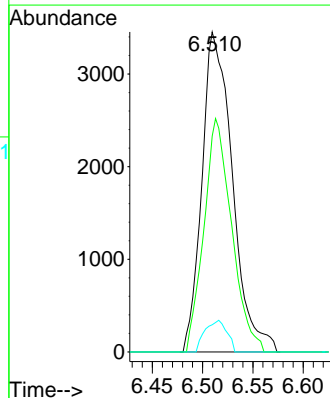
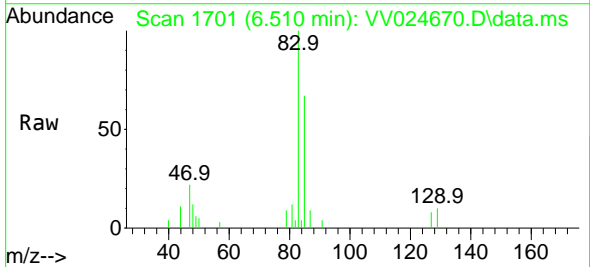


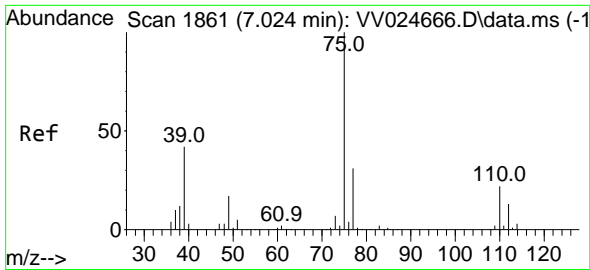
Tgt Ion: 63 Resp: 5602
 Ion Ratio Lower Upper
 63 100
 112 0.0 4.3 6.5#



#38
 Bromodichloromethane
 Concen: 0.501 ug/L
 RT: 6.510 min Scan# 1701
 Delta R.T. 0.003 min
 Lab File: VV024670.D
 Acq: 15 Feb 2022 15:44

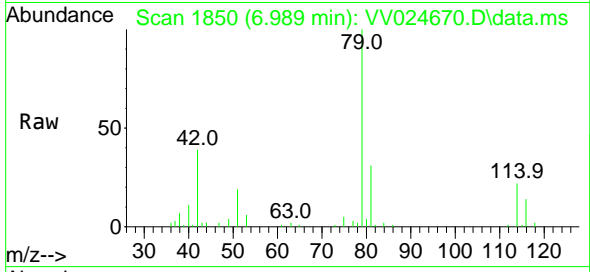
Tgt Ion: 83 Resp: 7283
 Ion Ratio Lower Upper
 83 100
 85 67.5 44.0 81.8
 127 8.5 8.6 12.8#



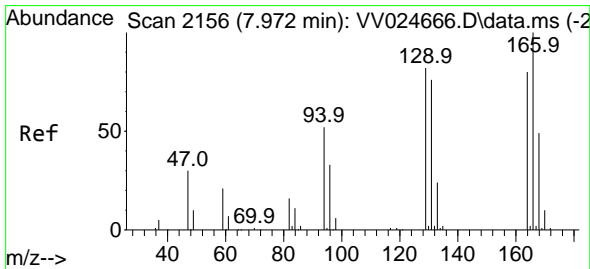
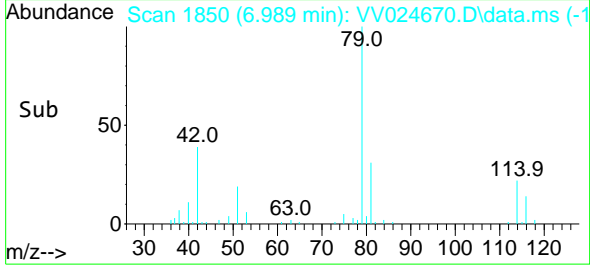
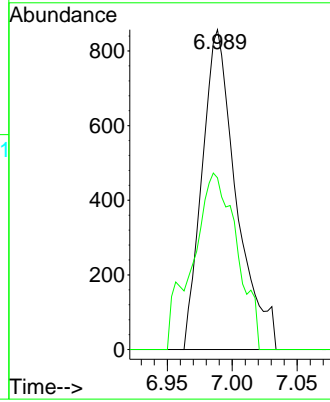


#39
 cis-1,3-Dichloropropene
 Concen: 0.094 ug/L
 RT: 6.989 min Scan# 1861
 Delta R.T. -0.035 min
 Lab File: VV024670.D
 Acq: 15 Feb 2022 15:44

Instrument : MSVOA_V
 ClientSampleId :

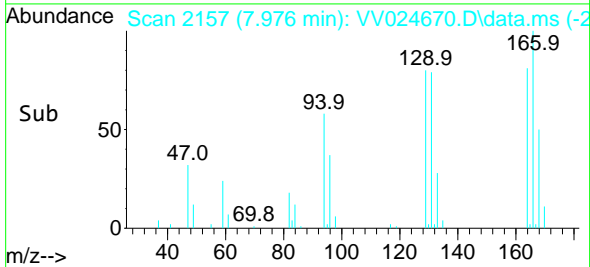
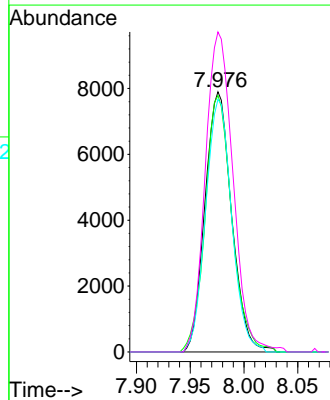
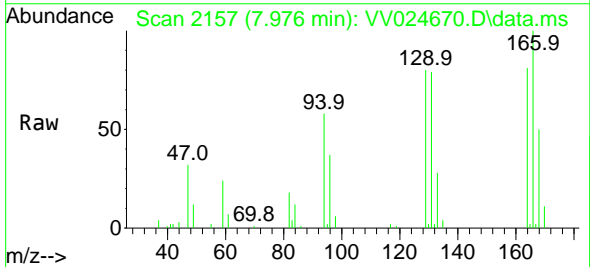


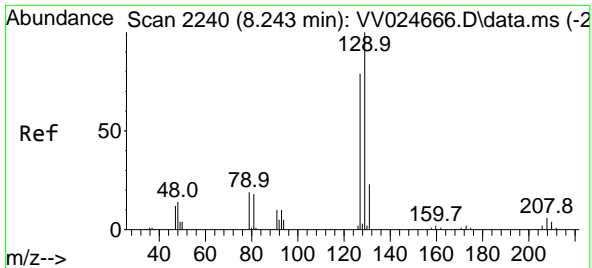
Tgt Ion: 75 Resp: 1569
 Ion Ratio Lower Upper
 75 100
 77 53.7 22.0 41.0#



#47
 Tetrachloroethene
 Concen: 1.657 ug/L
 RT: 7.976 min Scan# 2157
 Delta R.T. 0.003 min
 Lab File: VV024670.D
 Acq: 15 Feb 2022 15:44

Tgt Ion:164 Resp: 13658
 Ion Ratio Lower Upper
 164 100
 129 98.6 62.6 116.2
 131 97.1 61.0 113.4
 166 123.0 87.3 162.1

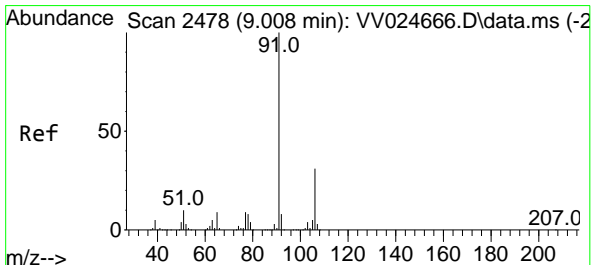
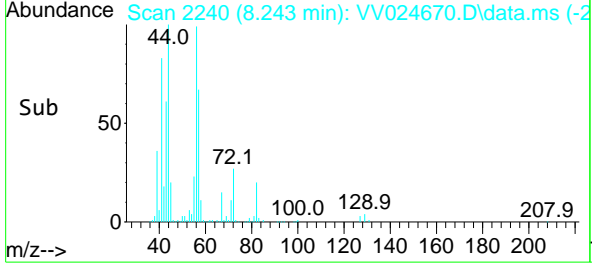
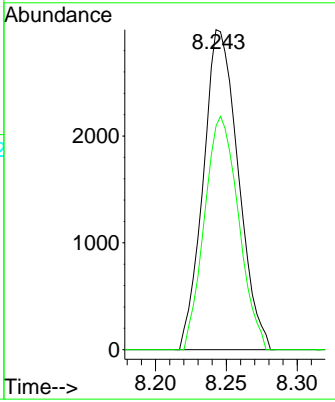
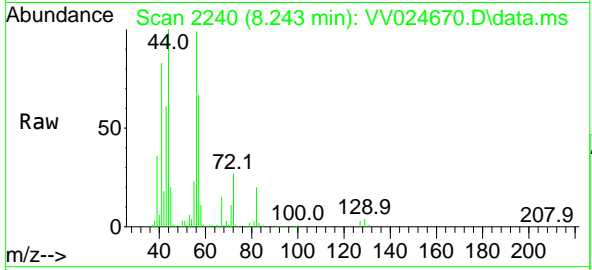




#49
 Dibromochloromethane
 Concen: 0.602 ug/L
 RT: 8.243 min Scan# 21
 Delta R.T. 0.000 min
 Lab File: VV024670.D
 Acq: 15 Feb 2022 15:44

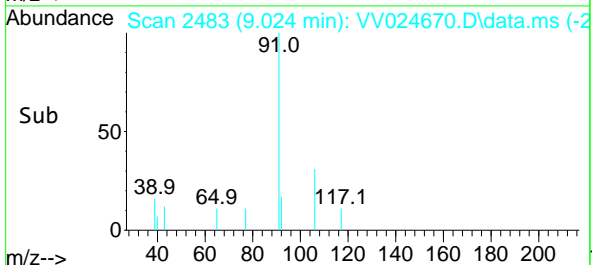
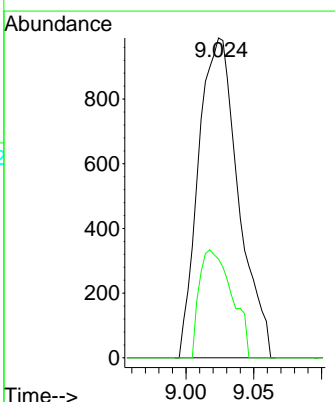
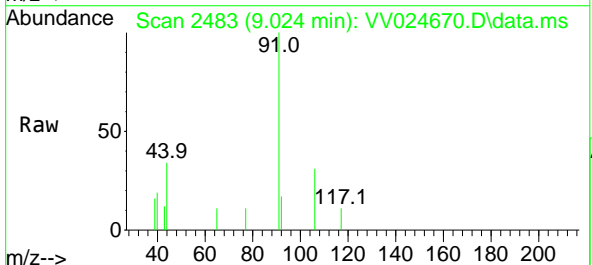
Instrument : MSVOA_V
 ClientSampleId :

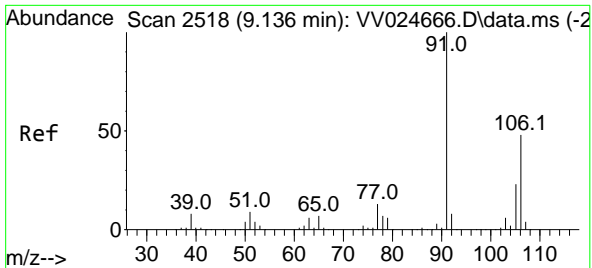
Tgt Ion:129 Resp: 5148
 Ion Ratio Lower Upper
 129 100
 127 69.9 53.5 99.3



#52
 Ethylbenzene
 Concen: 0.037 ug/L
 RT: 9.024 min Scan# 2483
 Delta R.T. 0.016 min
 Lab File: VV024670.D
 Acq: 15 Feb 2022 15:44

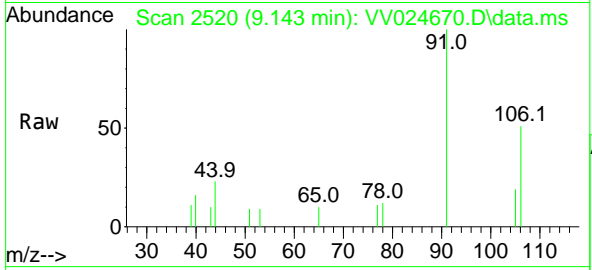
Tgt Ion: 91 Resp: 2027
 Ion Ratio Lower Upper
 91 100
 106 30.8 22.0 41.0



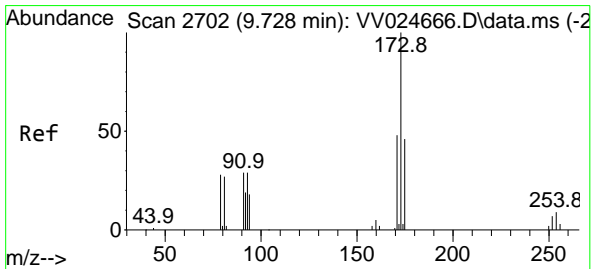
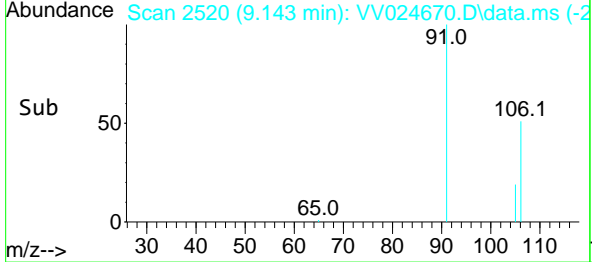
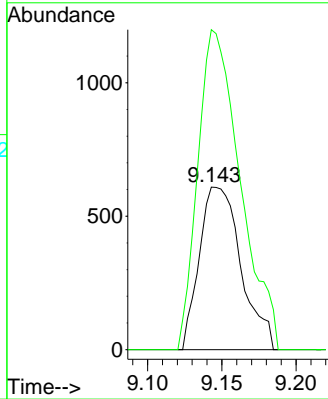


#53
 m,p-xylene
 Concen: 0.057 ug/L
 RT: 9.143 min Scan# 21
 Delta R.T. 0.007 min
 Lab File: VV024670.D
 Acq: 15 Feb 2022 15:44

Instrument :
 MSVOA_V
 ClientSampleId :

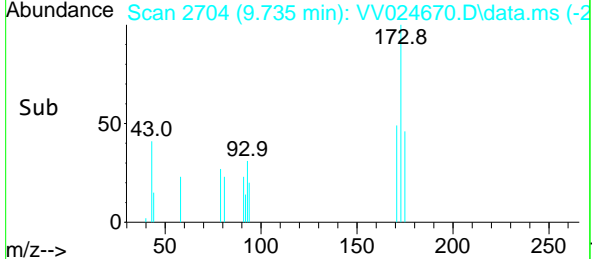
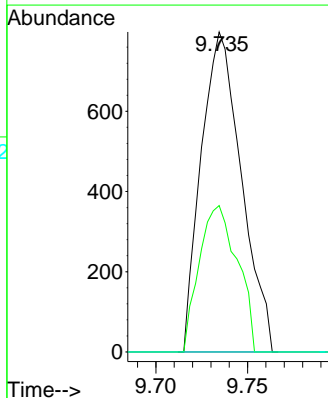
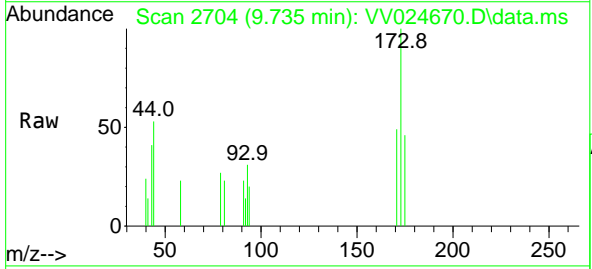


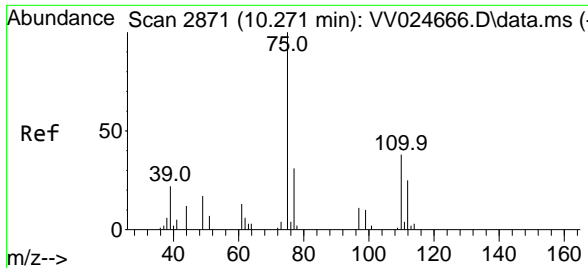
Tgt Ion:106 Resp: 1190
 Ion Ratio Lower Upper
 106 100
 91 196.9 139.5 259.1



#59
 Bromoform
 Concen: 0.322 ug/L
 RT: 9.735 min Scan# 2704
 Delta R.T. 0.007 min
 Lab File: VV024670.D
 Acq: 15 Feb 2022 15:44

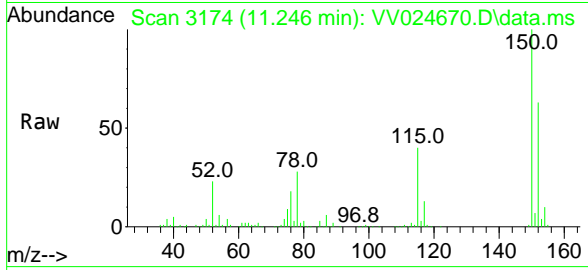
Tgt Ion:173 Resp: 1216
 Ion Ratio Lower Upper
 173 100
 175 43.4 39.4 59.2
 254 0.0 7.4 11.0#





#61
 1,2,3-Trichloropropane
 Concen: 1.372 ug/L
 RT: 11.246 min Scan# 31
 Delta R.T. 0.974 min
 Lab File: VV024670.D
 Acq: 15 Feb 2022 15:44

Instrument :
 MSVOA_V
 ClientSampleId :



Tgt Ion: 75 Resp: 7990

Ion	Ratio	Lower	Upper
75	100		
77	32.9	26.4	39.6
110	2.4	34.2	51.2#

