

Data File : VV014615.D
 Acq On : 19 Feb 2020 18:59
 Operator : SY/MD
 Sample : MDL02
 Misc : 25.0mL/MSVOA_V/WATER
 ALS Vial : 13 Sample Multiplier: 1

Instrument :
 MSVOA_V
 ClientSampleId :
 MDL02

Quant Time: Feb 20 02:51:51 2020
 Quant Method : Z:\VOASRV\HPCHEM1\MSVOA_V\METHOD\SFAMVTR021920WMA.M
 Quant Title : TRACE VOA SFAM1.0
 QLast Update : Thu Feb 20 02:48:04 2020
 Response via : Initial Calibration

Internal Standards	R.T.	QIon	Response	Conc	Units	Dev(Min)
1) 1,4-Difluorobenzene	5.67	114	24542	5.00	ug/L	0.00
28) Chlorobenzene-d5	8.89	117	24088	5.00	ug/L	0.00
58) 1,4-Dichlorobenzene-d4	11.29	152	13022	5.00	ug/L	0.00

System Monitoring Compounds

4) Vinyl Chloride-d3	1.31	65	44093	48.92	ug/L	0.00
Spiked Amount	5.000	Range	40 - 130	Recovery	=	978.40%#
7) Chloroethane-d5	1.58	69	35477	51.21	ug/L	0.00
Spiked Amount	5.000	Range	65 - 130	Recovery	=	1024.20%#
11) 1,1-Dichloroethene-d2	2.13	63	77304	45.60	ug/L	0.00
Spiked Amount	5.000	Range	60 - 125	Recovery	=	912.00%#
20) 2-Butanone-d5	3.96	46	111861	589.65	ug/L	0.02
Spiked Amount	50.000	Range	40 - 130	Recovery	=	1179.30%#
24) Chloroform-d	4.40	84	106003	48.25	ug/L	0.00
Spiked Amount	5.000	Range	70 - 125	Recovery	=	965.00%#
26) 1,2-Dichloroethane-d4	5.08	65	74626	54.39	ug/L	0.00
Spiked Amount	5.000	Range	70 - 130	Recovery	=	1087.80%#
32) Benzene-d6	5.09	84	320266	51.88	ug/L	0.00
Spiked Amount	5.000	Range	70 - 125	Recovery	=	1037.60%#
36) 1,2-Dichloropropane-d6	6.11	67	87976	50.43	ug/L	0.00
Spiked Amount	5.000	Range	60 - 140	Recovery	=	1008.60%#
41) Toluene-d8	7.35	98	304127	51.14	ug/L	0.00
Spiked Amount	5.000	Range	70 - 130	Recovery	=	1022.80%#
43) trans-1,3-Dichloropropene-	7.66	79	38151	51.68	ug/L	0.00
Spiked Amount	5.000	Range	55 - 130	Recovery	=	1033.60%#
46) 2-Hexanone-d5	8.13	63	139486	551.89	ug/L	0.00
Spiked Amount	50.000	Range	45 - 130	Recovery	=	1103.78%#
56) 1,1,2,2-Tetrachloroethane-	10.25	84	68312	52.77	ug/L	0.00
Spiked Amount	5.000	Range	65 - 120	Recovery	=	1055.40%#
66) 1,2-Dichlorobenzene-d4	11.67	152	108007	46.91	ug/L	0.00
Spiked Amount	5.000	Range	80 - 120	Recovery	=	938.20%#

Target Compounds

Target Compounds	R.T.	QIon	Response	Conc	Units	Qvalue
2) Dichlorodifluoromethane	1.14	85	57298	24.203	ug/L	98
3) Chloromethane	1.25	50	23657	23.494	ug/L	97
5) Vinyl chloride	1.32	62	24629	23.325	ug/L	99
6) Bromomethane	1.53	94	15296	24.371	ug/L	94
8) Chloroethane	1.60	64	13055	23.668	ug/L	98
9) Trichlorofluoromethane	1.77	101	53533	25.031	ug/L	100
10) 1,1,2-Trichloro-1,2,2-trif	2.13	101	22367	24.848	ug/L	95
12) 1,1-Dichloroethene	2.14	96	19794	24.620	ug/L #	52
13) Acetone	2.21	43	26850	243.170	ug/L	99
14) Carbon disulfide	2.31	76	111766	24.862	ug/L	99
15) Methyl Acetate	2.47	43	8113	20.382	ug/L	94
16) Methylene chloride	2.53	84	38621	22.999	ug/L	99
17) Methyl tert-butyl Ether	2.80	73	87644	25.468	ug/L	99
18) trans-1,2-Dichloroethene	2.79	96	41101	24.629	ug/L	98
19) 1,1-Dichloroethane	3.23	63	67284	24.625	ug/L	99
21) 2-Butanone	4.04	43	47986	236.403	ug/L	85
22) cis-1,2-Dichloroethene	3.96	96	44522	25.126	ug/L	94

Data File : VV014615.D
 Acq On : 19 Feb 2020 18:59
 Operator : SY/MD
 Sample : MDL02
 Misc : 25.0mL/MSVOA_V/WATER
 ALS Vial : 13 Sample Multiplier: 1

Instrument :
 MSVOA_V
 ClientSampled :
 MDL02

Quant Time: Feb 20 02:51:51 2020
 Quant Method : Z:\VOASRV\HPCHEM1\MSVOA_V\METHOD\SFAMVTR021920WMA.M
 Quant Title : TRACE VOA SFAM1.0
 QLast Update : Thu Feb 20 02:48:04 2020
 Response via : Initial Calibration

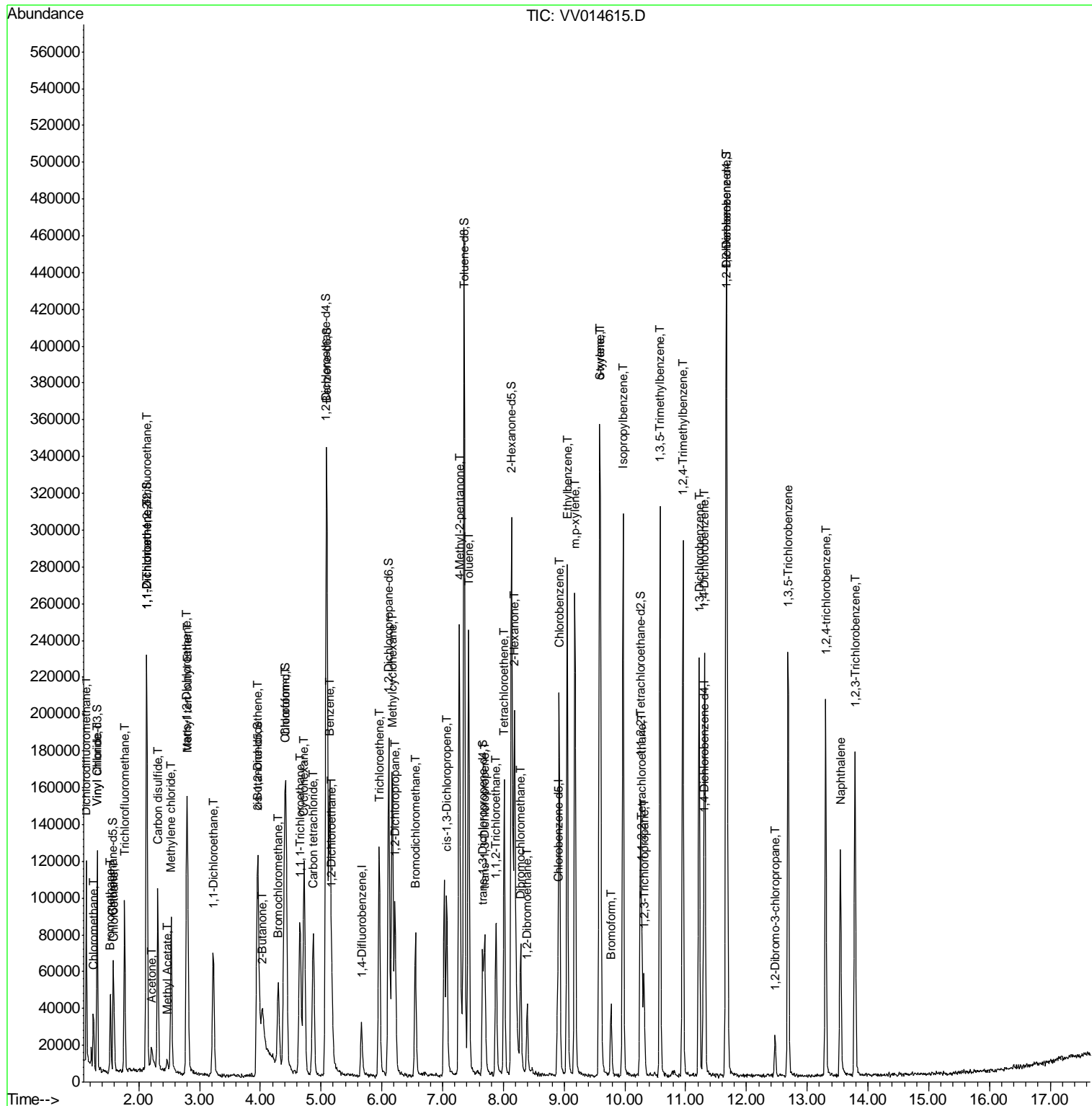
Internal Standards	R.T.	QIon	Response	Conc	Units	Dev(Min)
23) Bromochloromethane	4.30	128	17831	24.168	ug/L	98
25) Chloroform	4.42	83	125436	32.372	ug/L	99
27) 1,2-Dichloroethane	5.18	62	41349	25.270	ug/L #	94
29) 1,1,1-Trichloroethane	4.65	97	68442	23.282	ug/L	98
30) Cyclohexane	4.72	56	63331	23.128	ug/L	98
31) Carbon tetrachloride	4.87	117	59820	23.464	ug/L	99
33) Benzene	5.14	78	160651	24.084	ug/L	100
34) Trichloroethene	5.96	95	44861	23.648	ug/L	95
35) Methylcyclohexane	6.17	83	72335	22.943	ug/L	99
37) 1,2-Dichloropropane	6.22	63	33547	21.697	ug/L	99
38) Bromodichloromethane	6.55	83	50959	23.062	ug/L	100
39) cis-1,3-Dichloropropene	7.07	75	57980	23.319	ug/L	98
40) 4-Methyl-2-pentanone	7.27	43	192036	255.842	ug/L	96
42) Toluene	7.43	91	178057	24.370	ug/L	96
44) trans-1,3-Dichloropropene	7.69	75	47023	23.723	ug/L	97
45) 1,1,2-Trichloroethane	7.88	97	27392	23.643	ug/L	99
47) Tetrachloroethene	8.01	164	35421	23.660	ug/L	95
48) 2-Hexanone	8.19	43	135547	250.981	ug/L	99
49) Dibromochloromethane	8.29	129	35609	23.739	ug/L	96
50) 1,2-Dibromoethane	8.39	107	26994	24.497	ug/L	92
51) Chlorobenzene	8.92	112	113737	23.595	ug/L	96
52) Ethylbenzene	9.05	91	199615	23.996	ug/L	98
53) m,p-xylene	9.18	106	76494	24.030	ug/L	98
54) o-xylene	9.58	106	76247	24.942	ug/L	94
55) Styrene	9.60	104	120601	23.886	ug/L	96
57) 1,1,2,2-Tetrachloroethane	10.28	83	32330	24.525	ug/L	98
59) Bromoform	9.77	173	17871	21.690	ug/L	99
60) Isopropylbenzene	9.97	105	198890	22.100	ug/L	99
61) 1,2,3-Trichloropropane	10.32	75	22948	22.302	ug/L	99
62) 1,3,5-Trimethylbenzene	10.58	105	167683	22.326	ug/L	98
63) 1,2,4-Trimethylbenzene	10.96	105	162592	22.067	ug/L	100
64) 1,3-Dichlorobenzene	11.22	146	92140	21.836	ug/L	99
65) 1,4-Dichlorobenzene	11.31	146	91375	22.047	ug/L	98
67) 1,2-Dichlorobenzene	11.68	146	83792	22.617	ug/L	99
68) 1,2-Dibromo-3-chloropropan	12.47	75	5605	23.058	ug/L	97
69) 1,3,5-Trichlorobenzene	12.69	180	70604	22.695	ug/L	98
70) 1,2,4-trichlorobenzene	13.30	180	60483	23.209	ug/L	97
71) Naphthalene	13.55	128	100680	22.851	ug/L	99
72) 1,2,3-Trichlorobenzene	13.79	180	53416	23.402	ug/L	99

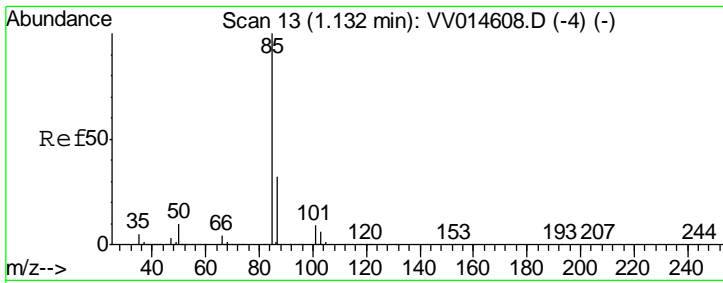
(#) = qualifier out of range (m) = manual integration (+) = signals summed

Data File : VV014615.D
Acq On : 19 Feb 2020 18:59
Operator : SY/MD
Sample : MDL02
Misc : 25.0mL/MSVOA_V/WATER
ALS Vial : 13 Sample Multiplier: 1

Instrument :
MSVOA_V
Client Sampled :
MDL02

Quant Time: Feb 20 02:51:51 2020
Quant Method : Z:\VOASRV\HPCHEM1\MSVOA_V\METHOD\SFAMVTR021920WMA.M
Quant Title : TRACE VOA SFAM1.0
QLast Update : Thu Feb 20 02:48:04 2020
Response via : Initial Calibration

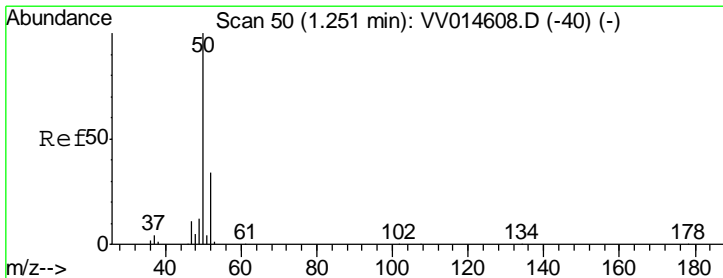
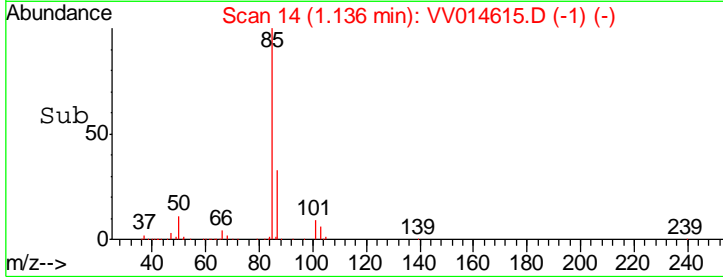
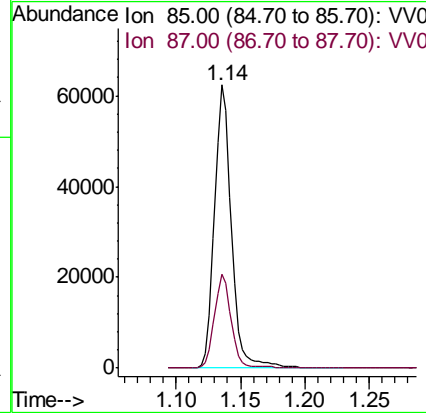
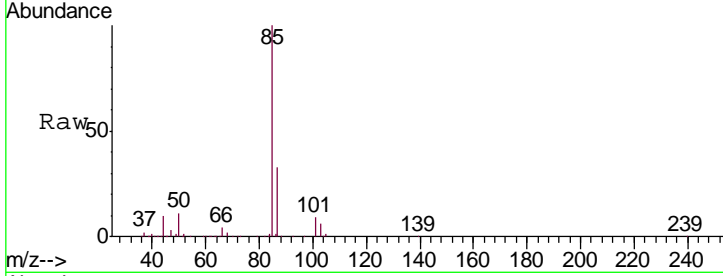




#2
 Dichlorodifluoromethane
 Concen: 24.203 ug/L
 RT: 1.14 min Scan# 14
 Delta R.T. 0.00 min
 Lab File: VV014615.D
 Acq: 19 Feb 2020 18:59

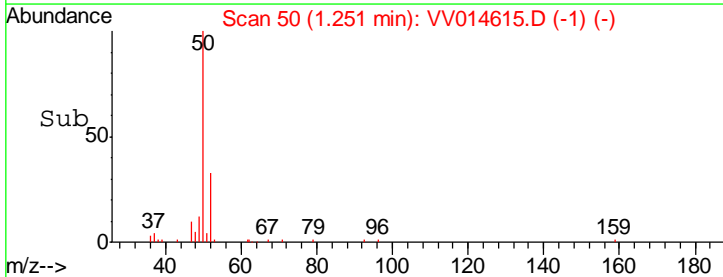
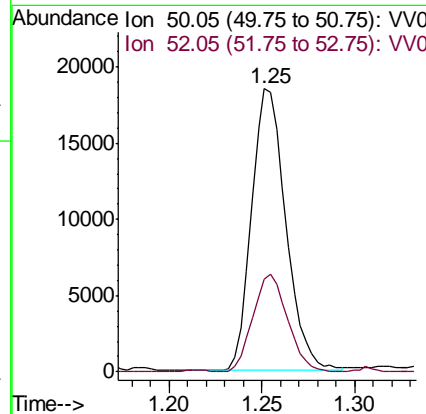
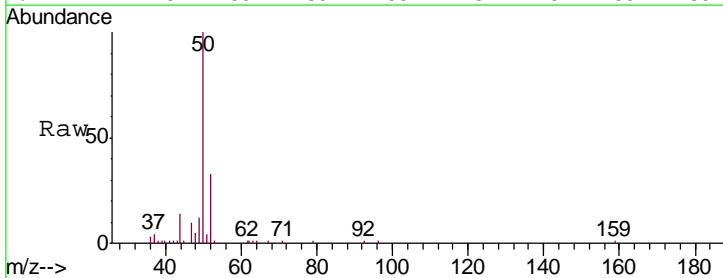
Instrument :
 MSVOA_V
 ClientSampled :
 MDL02

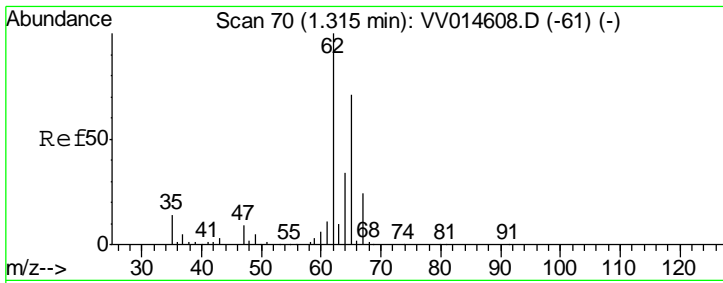
Tgt Ion: 85 Resp: 57298
 Ion Ratio Lower Upper
 85 100
 87 33.2 25.7 38.5



#3
 Chloromethane
 Concen: 23.494 ug/L
 RT: 1.25 min Scan# 50
 Delta R.T. 0.00 min
 Lab File: VV014615.D
 Acq: 19 Feb 2020 18:59

Tgt Ion: 50 Resp: 23657
 Ion Ratio Lower Upper
 50 100
 52 33.0 24.2 45.0

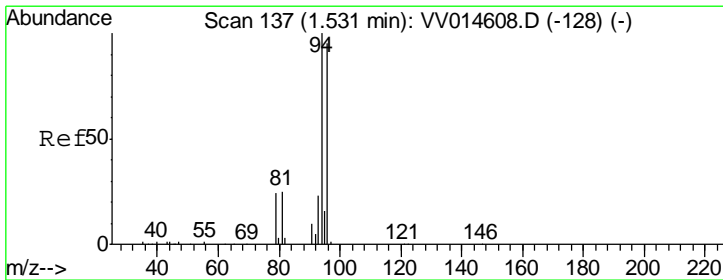
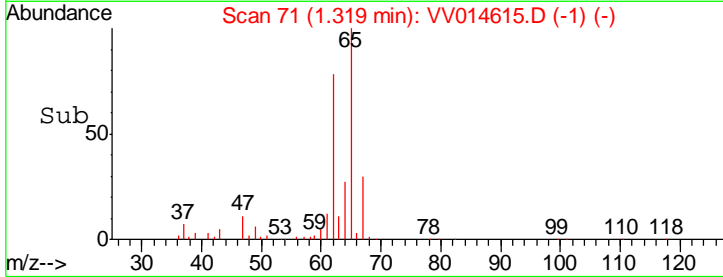
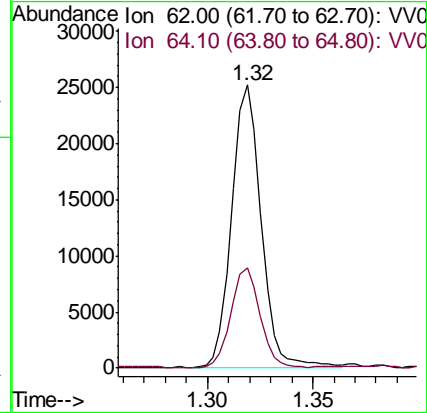
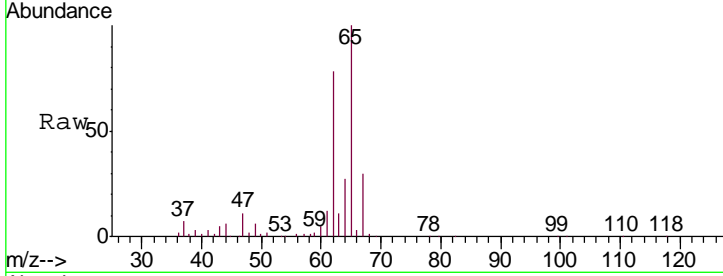




#5
 Vinyl chloride
 Concen: 23.325 ug/L
 RT: 1.32 min Scan# 71
 Delta R.T. 0.00 min
 Lab File: VV014615.D
 Acq: 19 Feb 2020 18:59

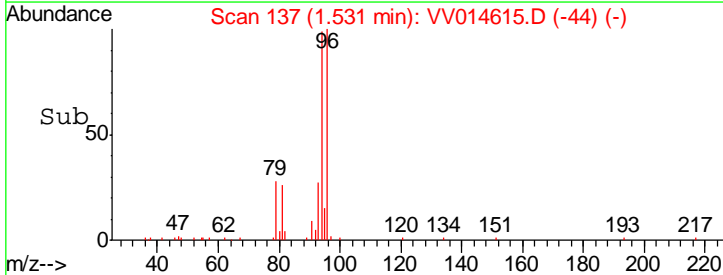
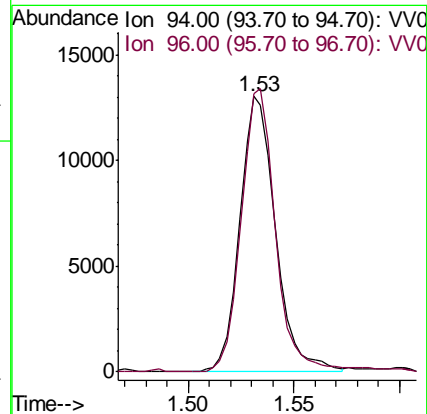
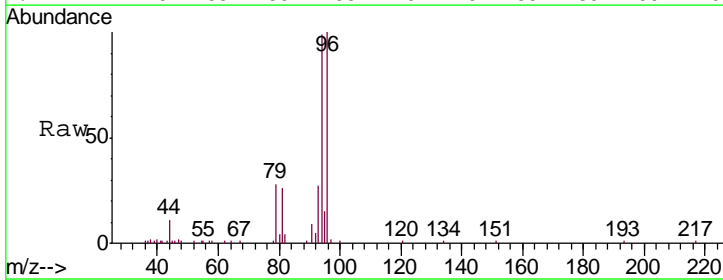
Instrument :
 MSVOA_V
 ClientSampled :
 MDL02

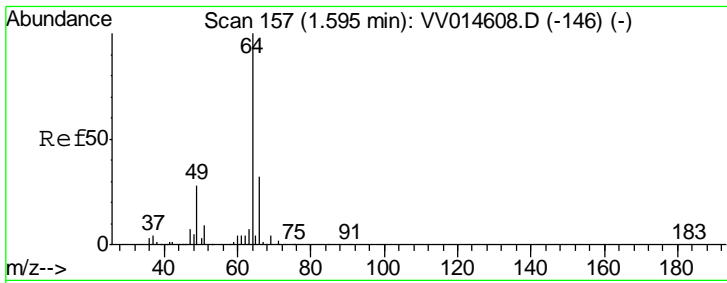
Tgt Ion: 62 Resp: 24629
 Ion Ratio Lower Upper
 62 100
 64 35.3 24.3 45.1



#6
 Bromomethane
 Concen: 24.371 ug/L
 RT: 1.53 min Scan# 137
 Delta R.T. 0.00 min
 Lab File: VV014615.D
 Acq: 19 Feb 2020 18:59

Tgt Ion: 94 Resp: 15296
 Ion Ratio Lower Upper
 94 100
 96 100.9 66.4 123.2

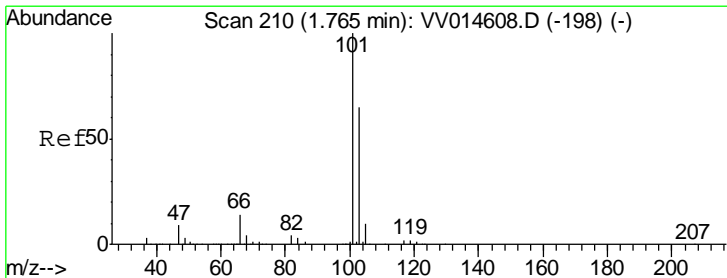
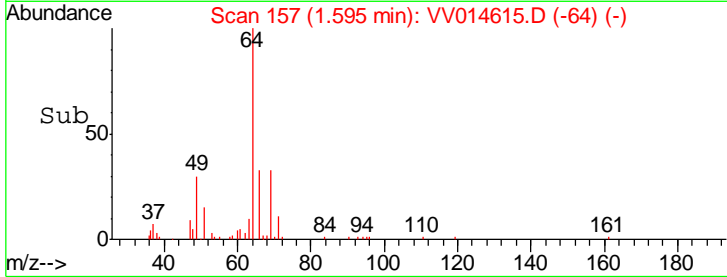
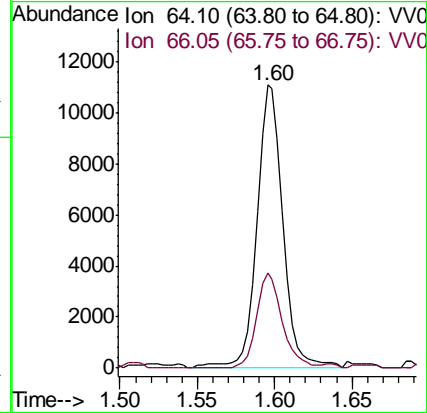
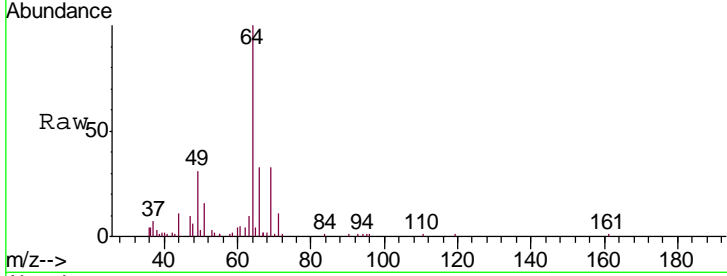




#8
 Chloroethane
 Concen: 23.668 ug/L
 RT: 1.60 min Scan# 157
 Delta R.T. 0.00 min
 Lab File: VV014615.D
 Acq: 19 Feb 2020 18:59

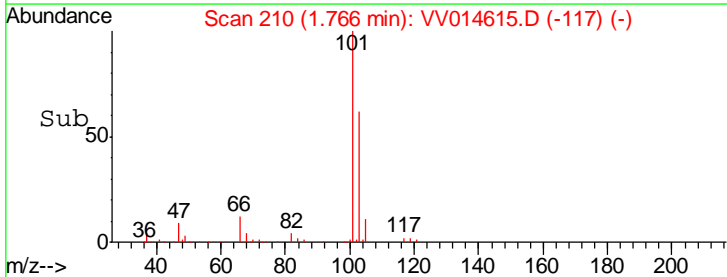
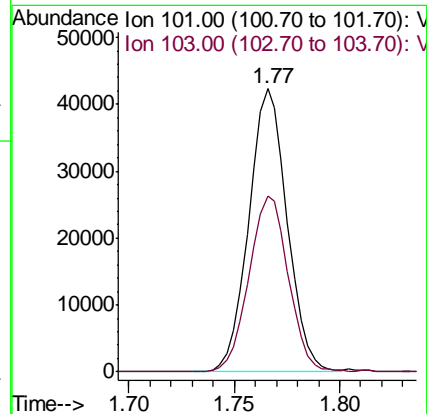
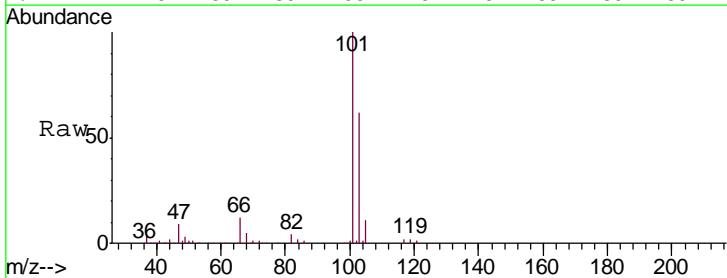
Instrument :
 MSVOA_V
 ClientSampled :
 MDL02

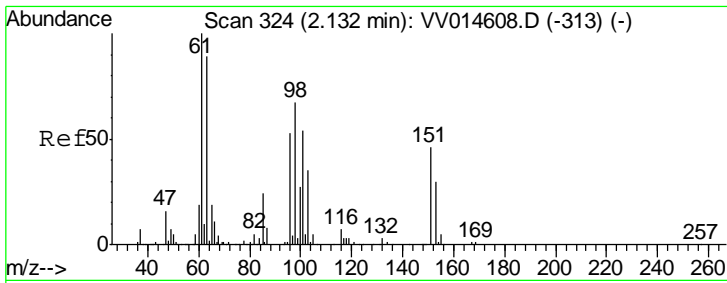
Tgt Ion: 64 Resp: 13055
 Ion Ratio Lower Upper
 64 100
 66 33.5 22.7 42.3



#9
 Trichlorofluoromethane
 Concen: 25.031 ug/L
 RT: 1.77 min Scan# 210
 Delta R.T. 0.00 min
 Lab File: VV014615.D
 Acq: 19 Feb 2020 18:59

Tgt Ion: 101 Resp: 53533
 Ion Ratio Lower Upper
 101 100
 103 64.0 51.4 77.2

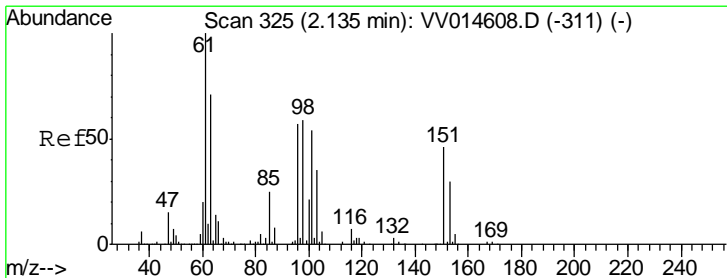
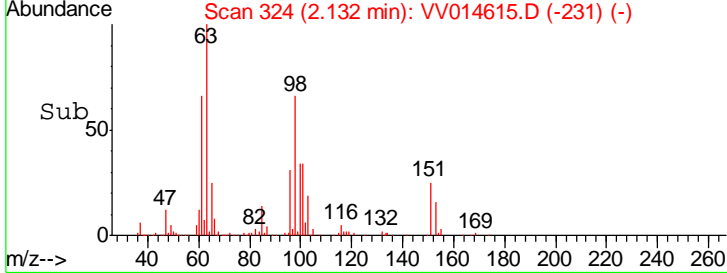
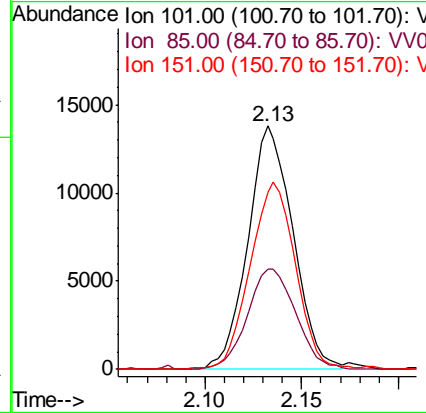
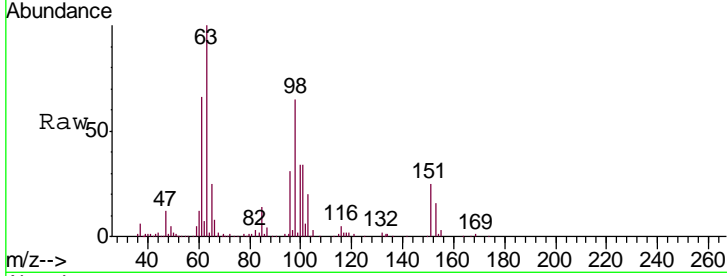




#10
 1,1,2-Trichloro-1,2,2-trifluoroethane
 Concen: 24.848 ug/L
 RT: 2.13 min Scan# 324
 Delta R.T. 0.00 min
 Lab File: VV014615.D
 Acq: 19 Feb 2020 18:59

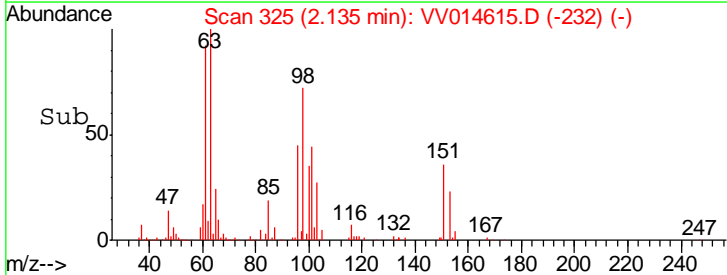
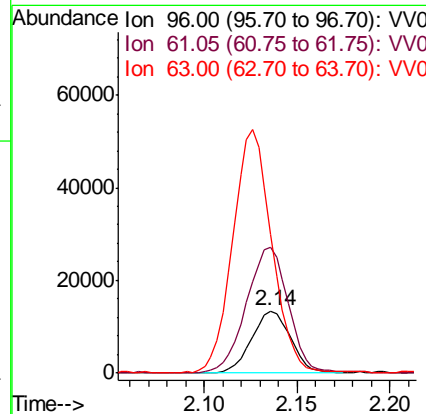
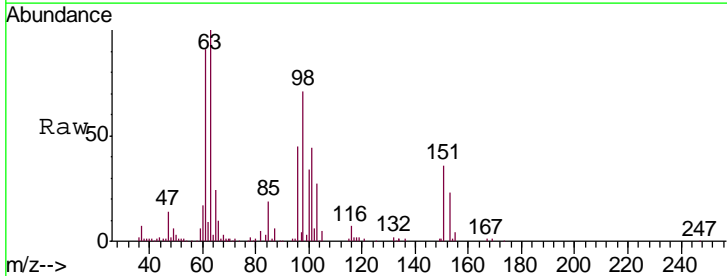
Instrument : MSVOA_V
 ClientSampled : MDL02

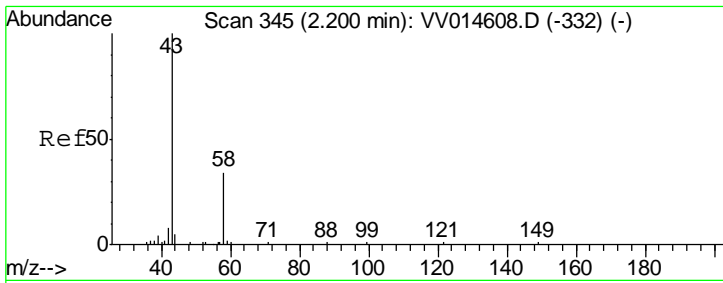
Tgt Ion	Resp	Lower	Upper
101	22367		
101	100		
85	44.3	37.3	55.9
151	77.5	66.3	99.5



#12
 1,1-Dichloroethene
 Concen: 24.620 ug/L
 RT: 2.14 min Scan# 325
 Delta R.T. 0.00 min
 Lab File: VV014615.D
 Acq: 19 Feb 2020 18:59

Tgt Ion	Resp	Lower	Upper
96	19794		
96	100		
61	202.9	122.4	227.2
63	221.9	86.9	161.5#

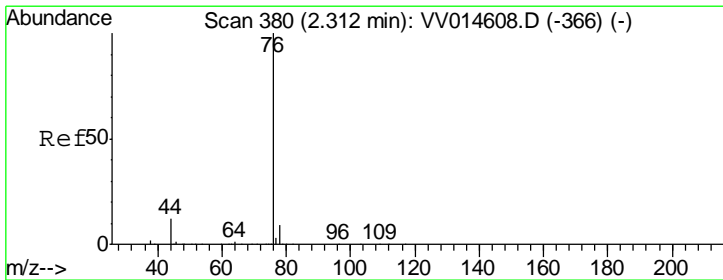
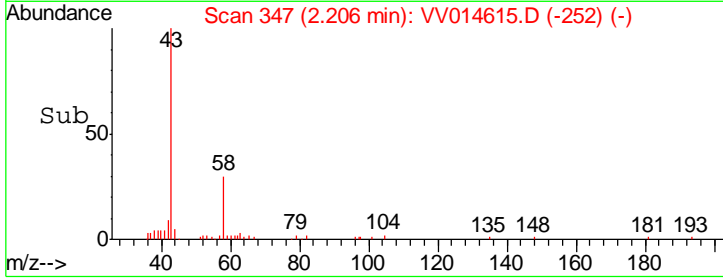
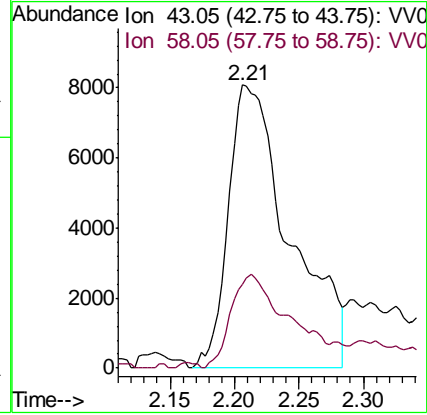
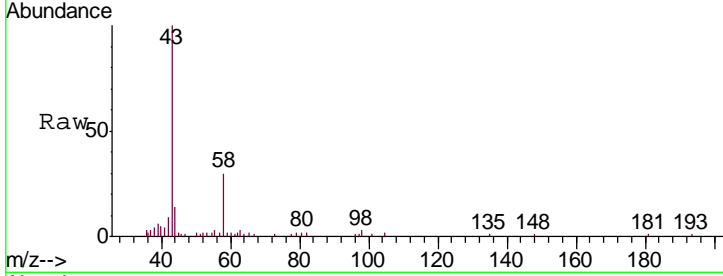




#13
 Acetone
 Concen: 243.170 ug/L
 RT: 2.21 min Scan# 347
 Delta R.T. 0.01 min
 Lab File: VV014615.D
 Acq: 19 Feb 2020 18:59

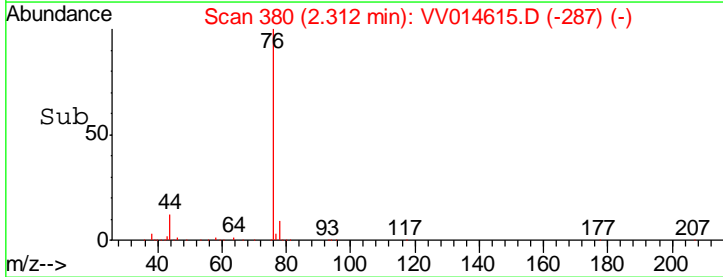
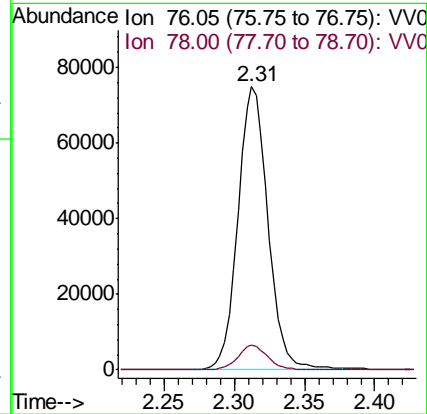
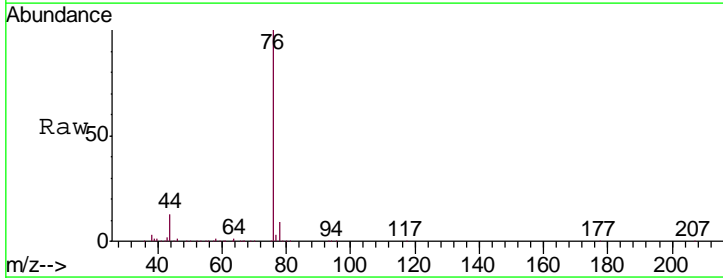
Instrument :
 MSVOA_V
ClientSampled :
 MDL02

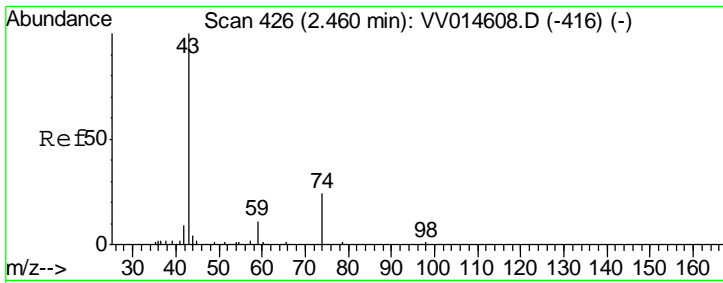
Tgt Ion: 43 Resp: 26850
 Ion Ratio Lower Upper
 43 100
 58 31.3 0.0 61.8



#14
 Carbon disulfide
 Concen: 24.862 ug/L
 RT: 2.31 min Scan# 380
 Delta R.T. 0.00 min
 Lab File: VV014615.D
 Acq: 19 Feb 2020 18:59

Tgt Ion: 76 Resp: 111766
 Ion Ratio Lower Upper
 76 100
 78 8.9 7.5 11.3

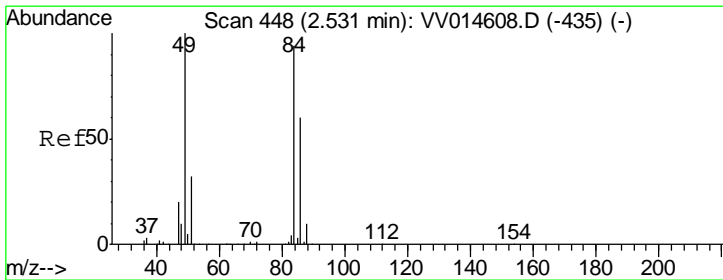
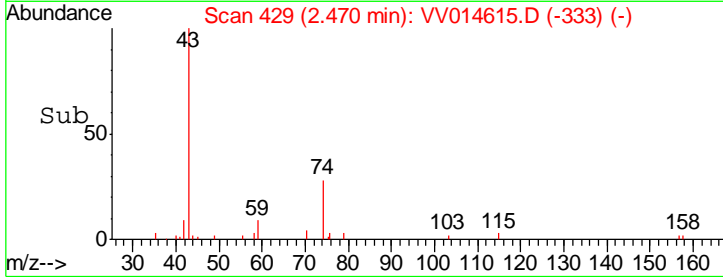
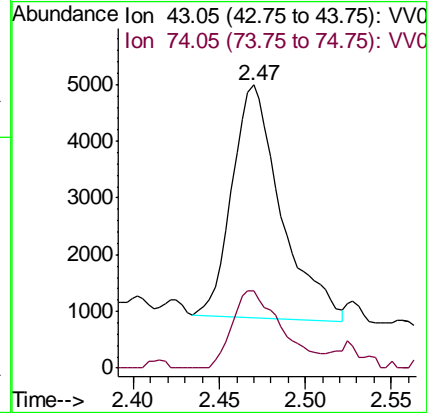
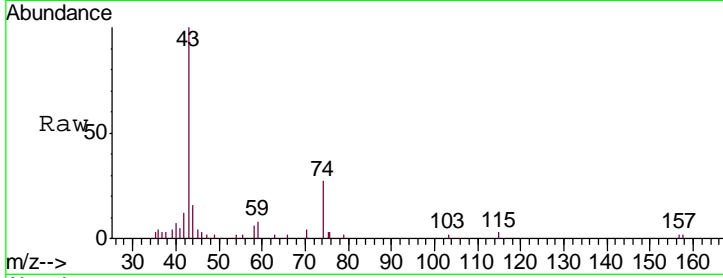




#15
 Methyl Acetate
 Concen: 20.382 ug/L
 RT: 2.47 min Scan# 429
 Delta R.T. 0.01 min
 Lab File: VV014615.D
 Acq: 19 Feb 2020 18:59

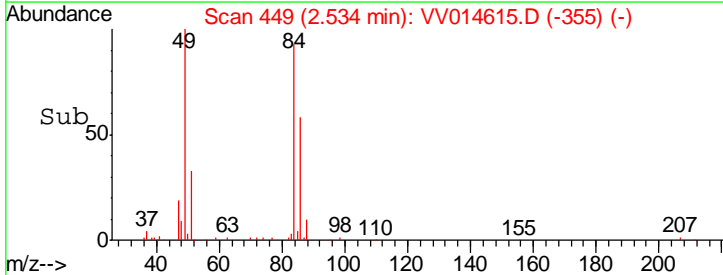
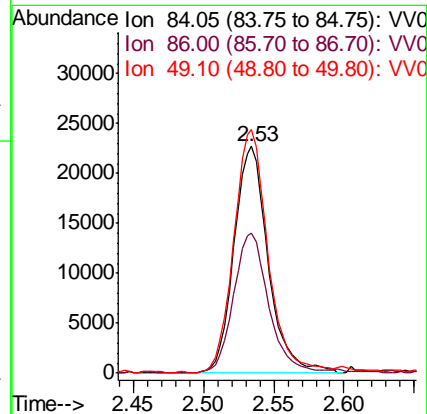
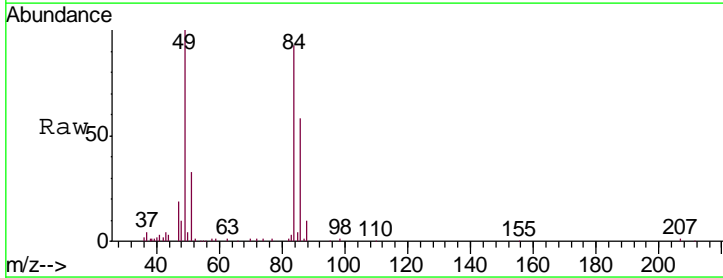
Instrument :
 MSVOA_V
 ClientSampled :
 MDL02

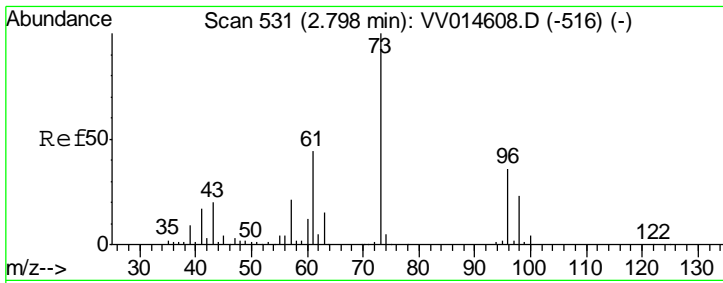
Tgt Ion: 43 Resp: 8113
 Ion Ratio Lower Upper
 43 100
 74 34.4 25.0 37.6



#16
 Methylene chloride
 Concen: 22.999 ug/L
 RT: 2.53 min Scan# 449
 Delta R.T. 0.00 min
 Lab File: VV014615.D
 Acq: 19 Feb 2020 18:59

Tgt Ion: 84 Resp: 38621
 Ion Ratio Lower Upper
 84 100
 86 61.9 44.8 83.2
 49 107.6 74.8 139.0

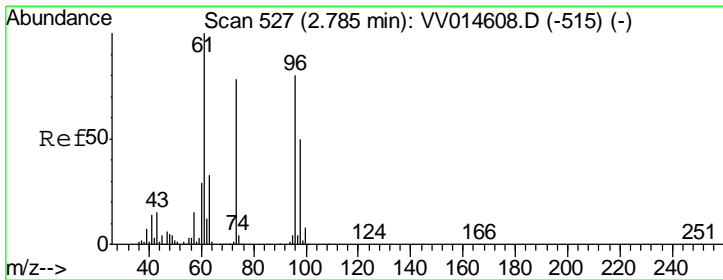
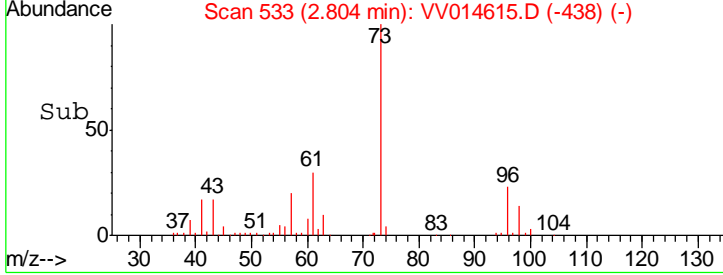
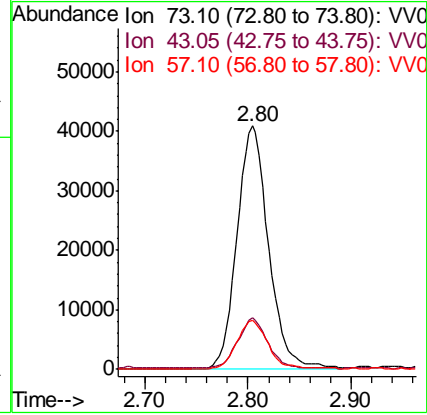
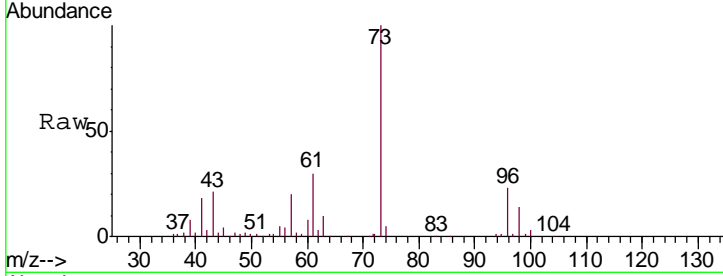




#17
 Methyl tert-butyl Ether
 Concen: 25.468 ug/L
 RT: 2.80 min Scan# 533
 Delta R.T. 0.01 min
 Lab File: VV014615.D
 Acq: 19 Feb 2020 18:59

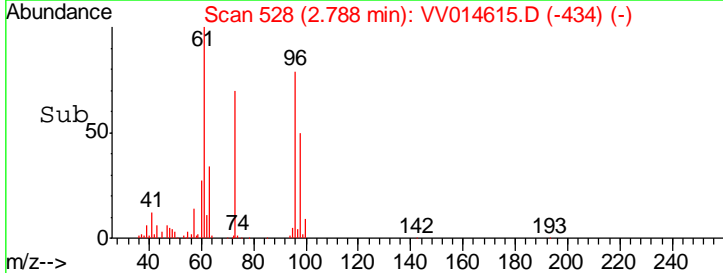
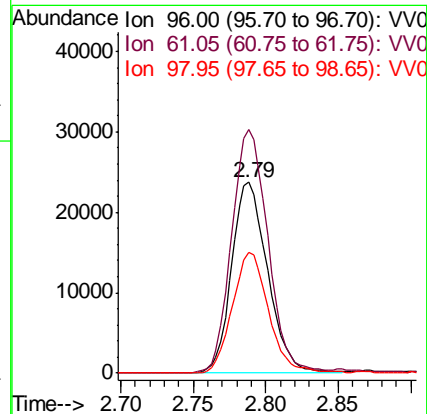
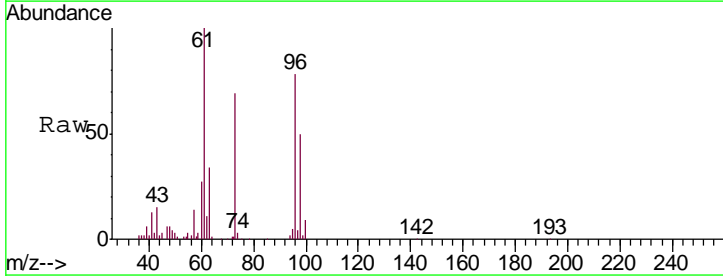
Instrument :
 MSVOA_V
 ClientSampled :
 MDL02

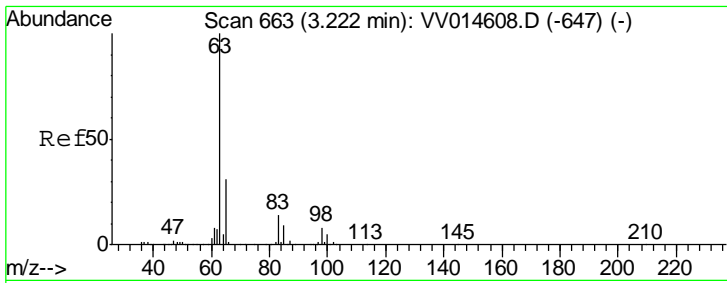
Tgt Ion	Resp	Lower	Upper
73	100		
43	19.1	15.1	22.7
57	19.3	16.0	24.0



#18
 trans-1,2-Dichloroethene
 Concen: 24.629 ug/L
 RT: 2.79 min Scan# 528
 Delta R.T. 0.00 min
 Lab File: VV014615.D
 Acq: 19 Feb 2020 18:59

Tgt Ion	Resp	Lower	Upper
96	100		
61	127.7	87.2	162.0
98	63.3	43.4	80.6

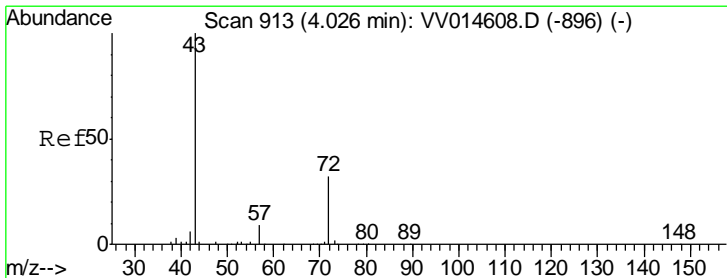
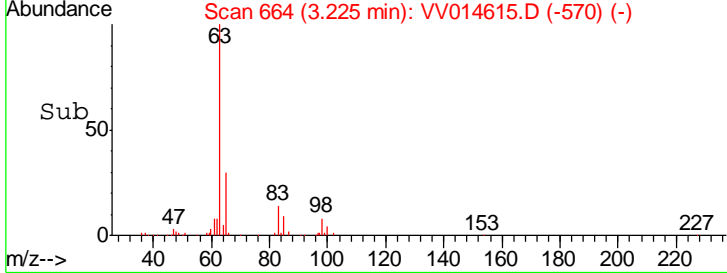
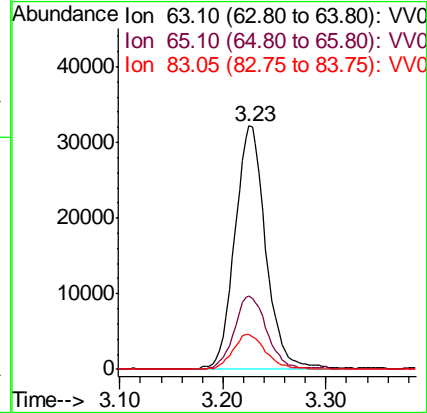
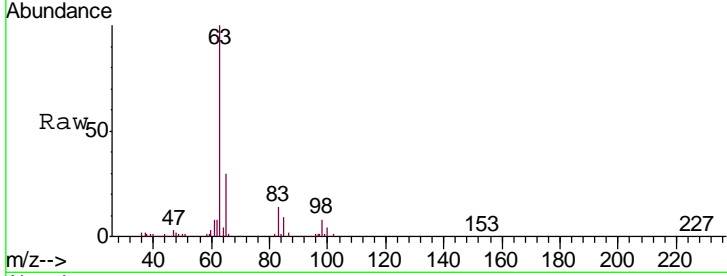




#19
 1,1-Dichloroethane
 Concen: 24.625 ug/L
 RT: 3.23 min Scan# 664
 Delta R.T. 0.00 min
 Lab File: VV014615.D
 Acq: 19 Feb 2020 18:59

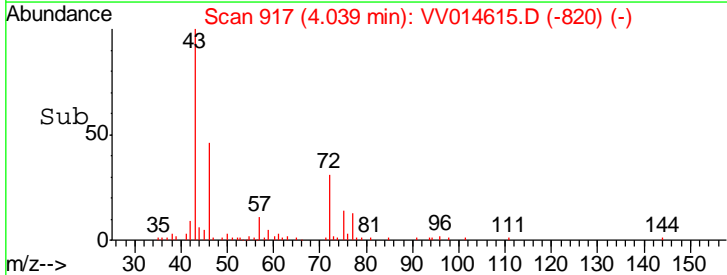
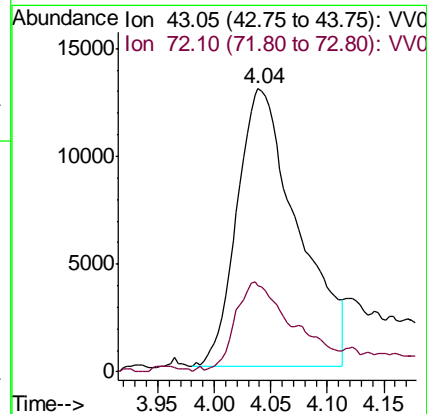
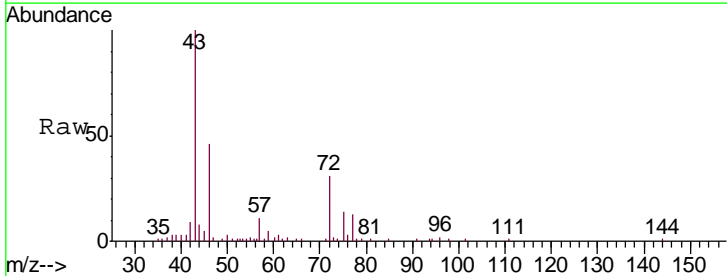
Instrument : MSVOA_V
 ClientSampled : MDL02

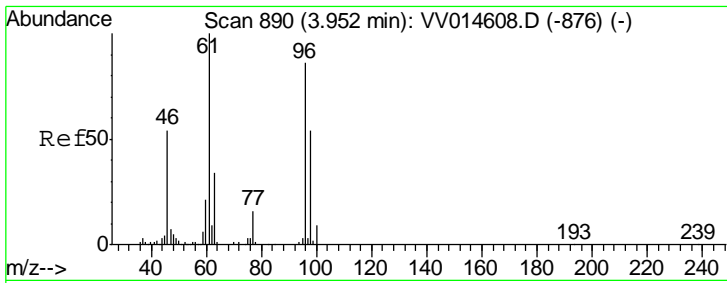
Tgt Ion	Resp	Lower	Upper
63	100		
65	30.0	21.4	39.8
83	14.2	10.0	18.6



#21
 2-Butanone
 Concen: 236.403 ug/L
 RT: 4.04 min Scan# 917
 Delta R.T. 0.01 min
 Lab File: VV014615.D
 Acq: 19 Feb 2020 18:59

Tgt Ion	Resp	Lower	Upper
43	100		
72	30.3	11.5	34.5

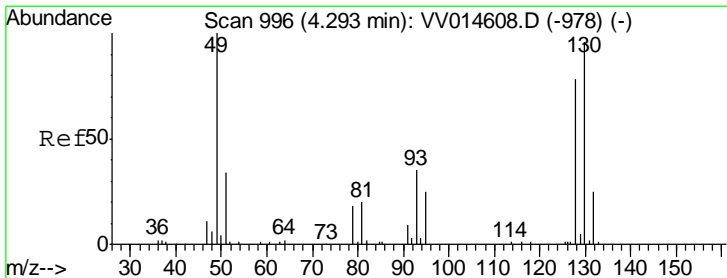
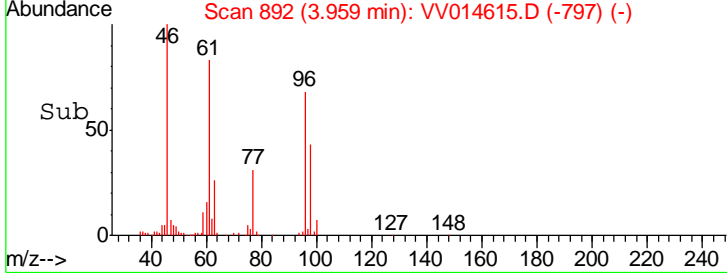
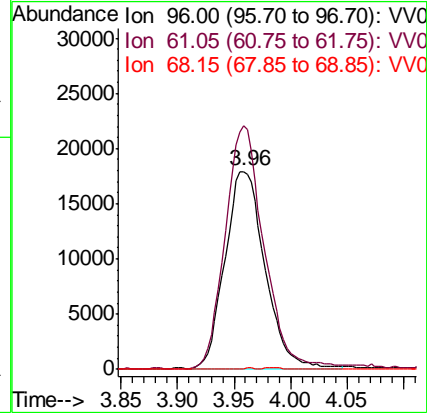
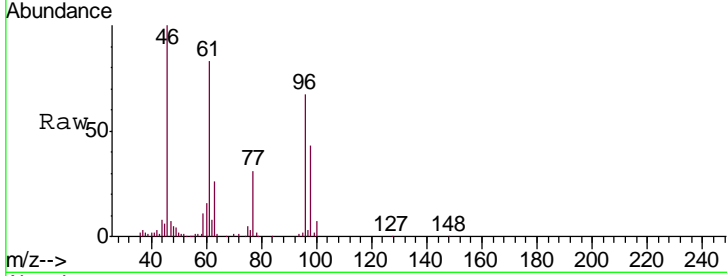




#22
 cis-1,2-Dichloroethene
 Concen: 25.126 ug/L
 RT: 3.96 min Scan# 892
 Delta R.T. 0.01 min
 Lab File: VV014615.D
 Acq: 19 Feb 2020 18:59

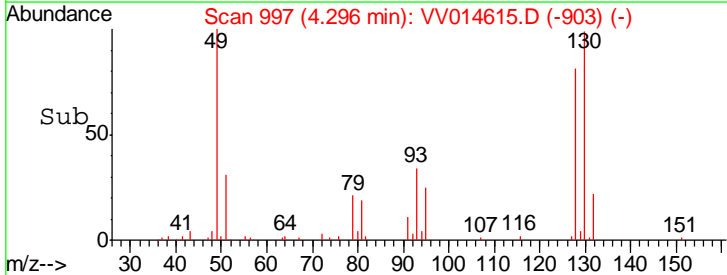
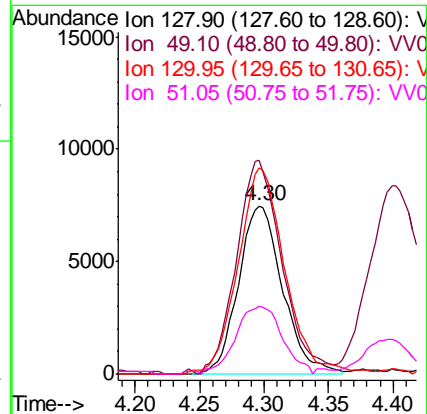
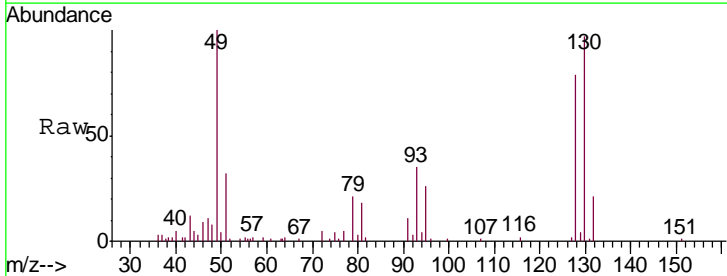
Instrument : MSVOA_V
 ClientSampled : MDL02

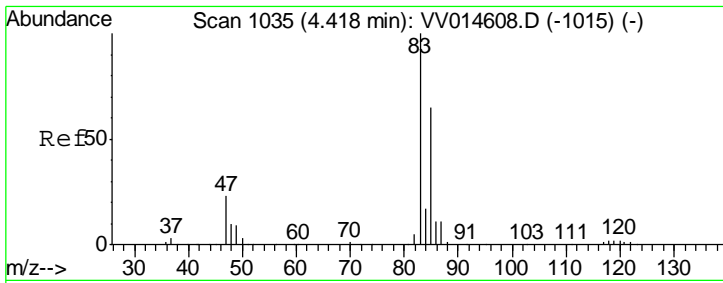
Tgt Ion	Resp	Lower	Upper
96	44522		
61	123.2	81.5	151.5
68	0.0	0.0	0.0



#23
 Bromochloromethane
 Concen: 24.168 ug/L
 RT: 4.30 min Scan# 997
 Delta R.T. 0.00 min
 Lab File: VV014615.D
 Acq: 19 Feb 2020 18:59

Tgt Ion	Resp	Lower	Upper
128	17831		
49	126.9	90.2	167.4
130	122.7	85.6	159.0
51	40.0	35.2	52.8

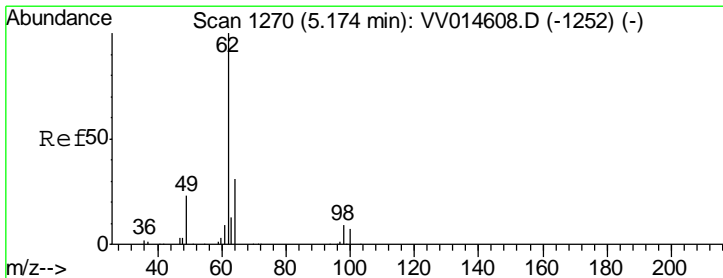
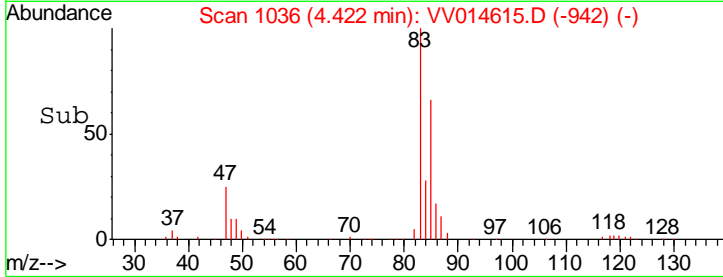
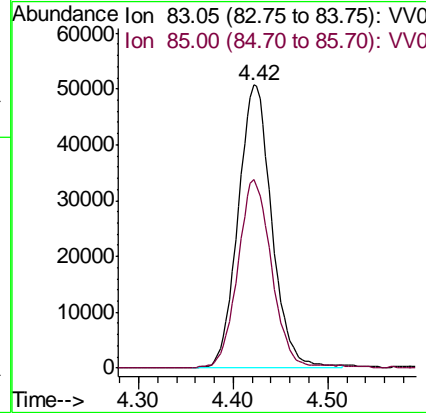
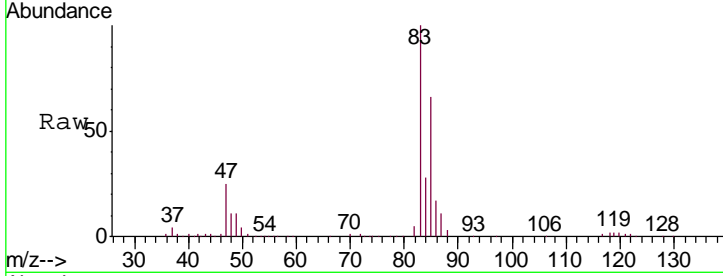




#25
 Chloroform
 Concen: 32.372 ug/L
 RT: 4.42 min Scan# 1036
 Delta R.T. 0.00 min
 Lab File: VV014615.D
 Acq: 19 Feb 2020 18:59

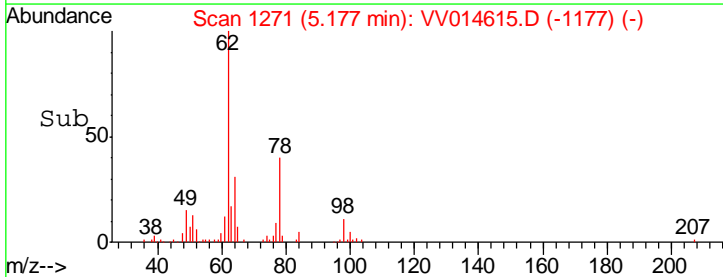
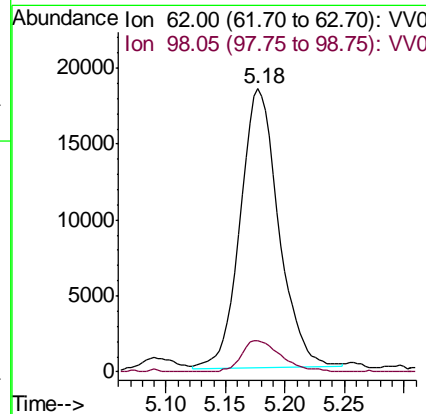
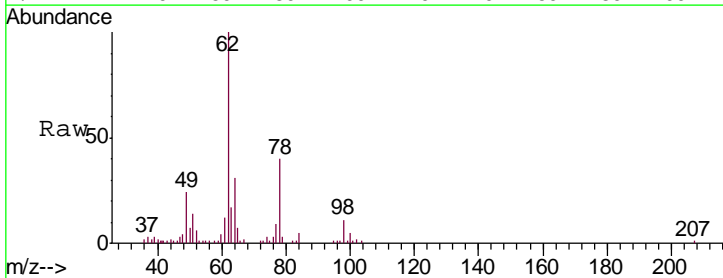
Instrument : MSVOA_V
 ClientSampled : MDL02

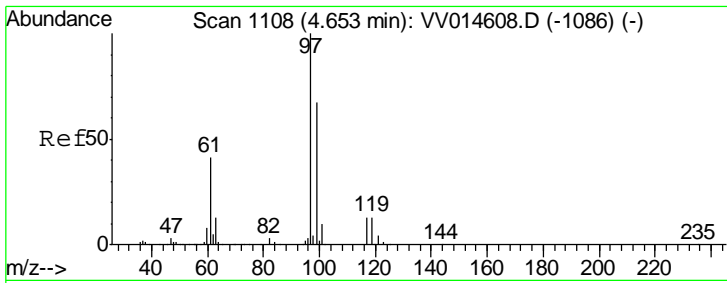
Tgt Ion	Resp	Lower	Upper
83	100		
85	66.5	45.8	85.2



#27
 1,2-Dichloroethane
 Concen: 25.270 ug/L
 RT: 5.18 min Scan# 1271
 Delta R.T. 0.00 min
 Lab File: VV014615.D
 Acq: 19 Feb 2020 18:59

Tgt Ion	Resp	Lower	Upper
62	100		
98	10.9	7.0	10.4#

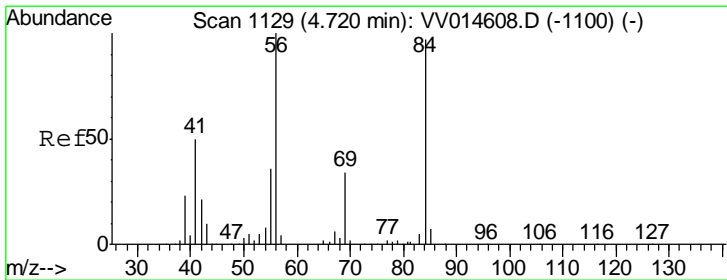
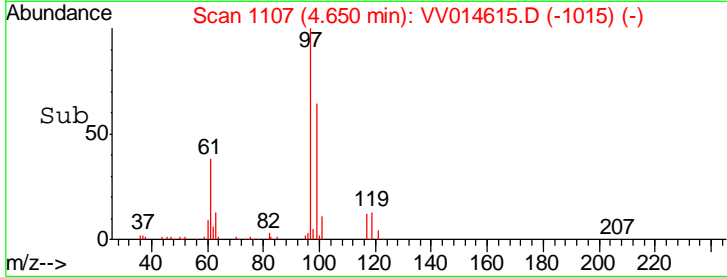
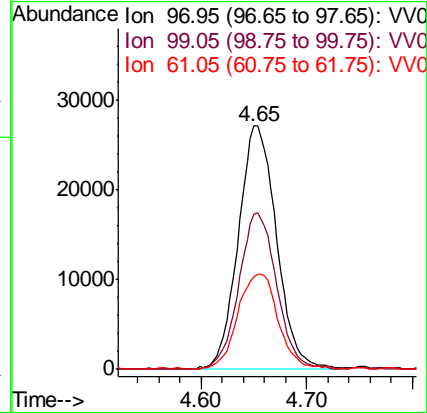
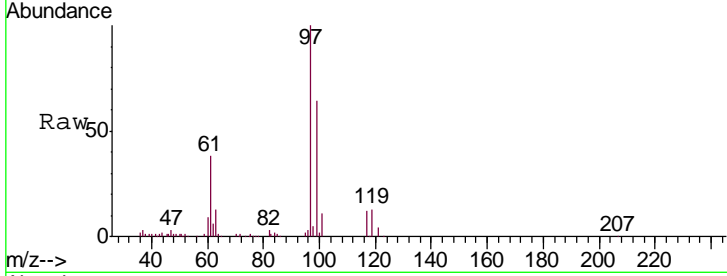




#29
 1,1,1-Trichloroethane
 Concen: 23.282 ug/L
 RT: 4.65 min Scan# 1107
 Delta R.T. -0.00 min
 Lab File: VV014615.D
 Acq: 19 Feb 2020 18:59

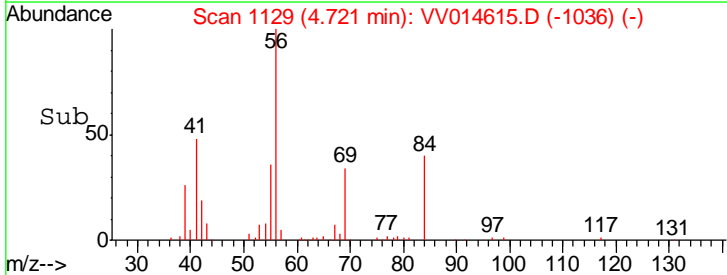
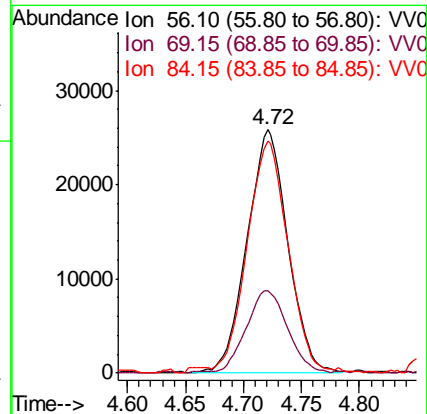
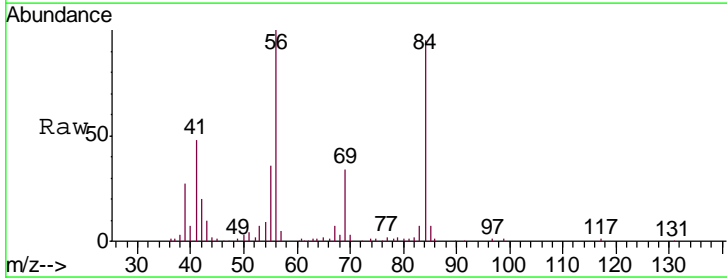
Instrument :
 MSVOA_V
 ClientSampled :
 MDL02

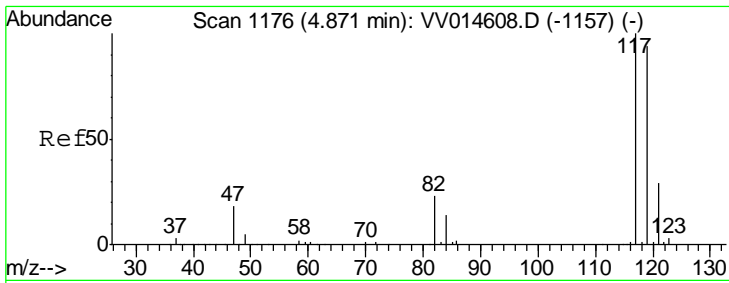
Tgt Ion	Resp	Lower	Upper
97	100		
99	63.5	52.1	78.1
61	41.7	32.8	49.2



#30
 Cyclohexane
 Concen: 23.128 ug/L
 RT: 4.72 min Scan# 1129
 Delta R.T. 0.00 min
 Lab File: VV014615.D
 Acq: 19 Feb 2020 18:59

Tgt Ion	Resp	Lower	Upper
56	100		
69	34.4	26.7	40.1
84	93.3	75.9	113.9

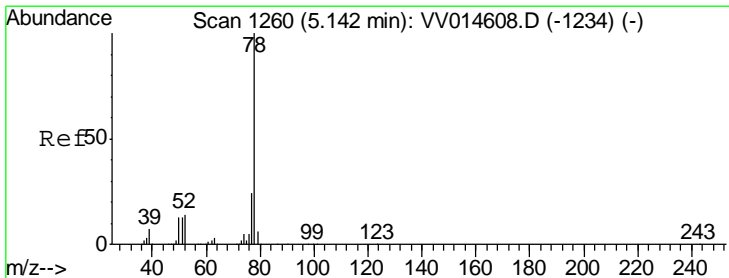
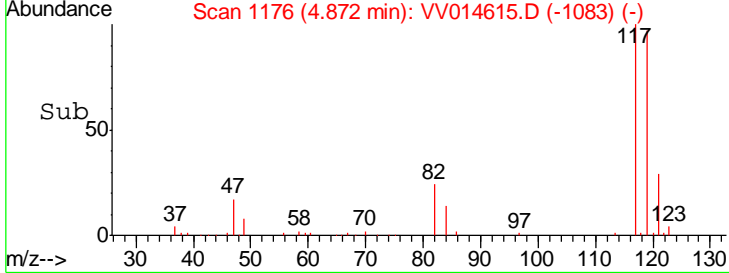
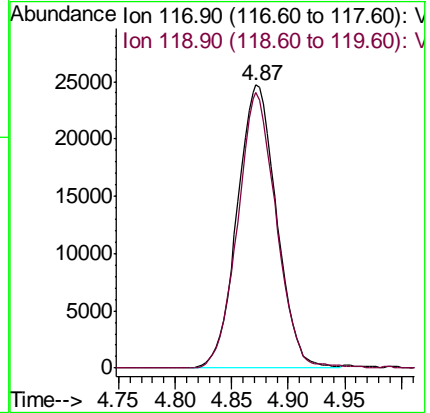
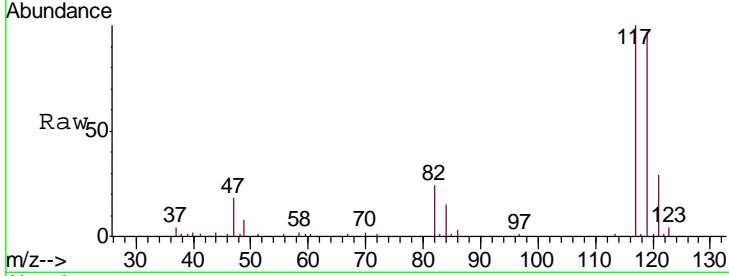




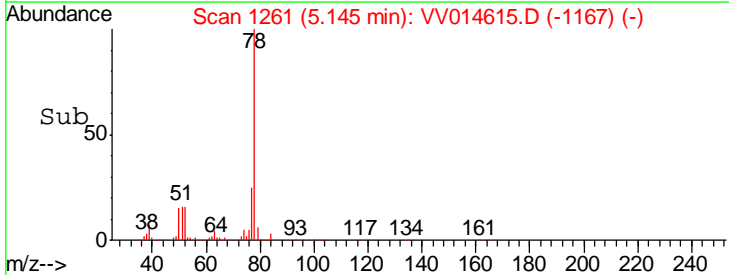
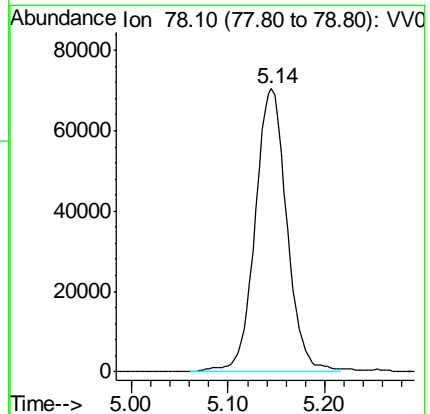
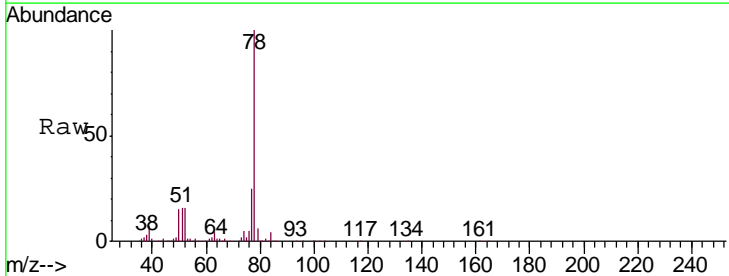
#31
 Carbon tetrachloride
 Concen: 23.464 ug/L
 RT: 4.87 min Scan# 1176
 Delta R.T. 0.00 min
 Lab File: VV014615.D
 Acq: 19 Feb 2020 18:59

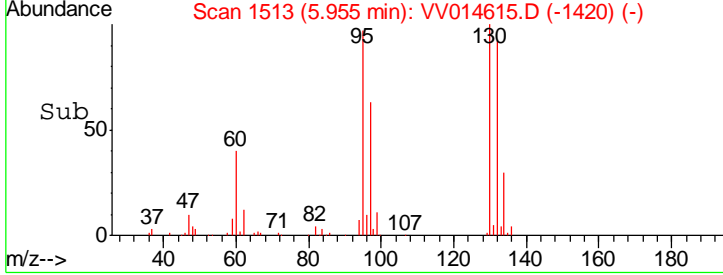
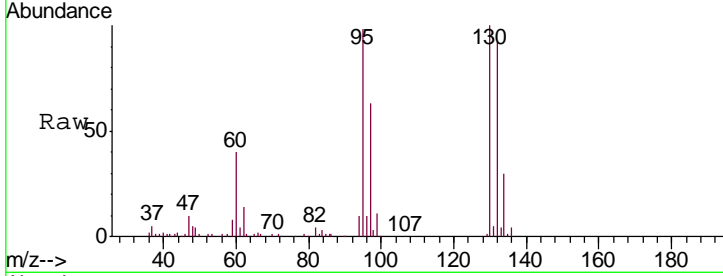
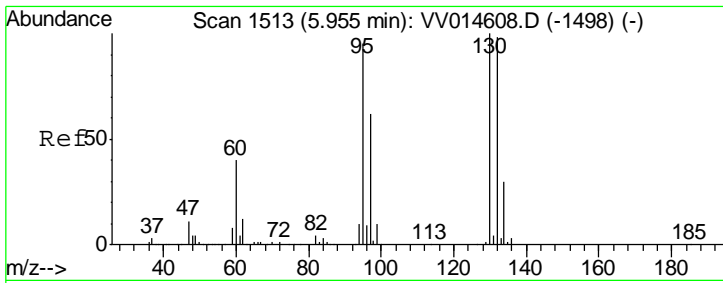
Instrument : MSVOA_V
 ClientSampled : MDL02

Tgt Ion: 117 Resp: 59820
 Ion Ratio Lower Upper
 117 100
 119 94.8 76.5 114.7



#33
 Benzene
 Concen: 24.084 ug/L
 RT: 5.14 min Scan# 1261
 Delta R.T. 0.00 min
 Lab File: VV014615.D
 Acq: 19 Feb 2020 18:59
 Tgt Ion: 78 Resp: 160651



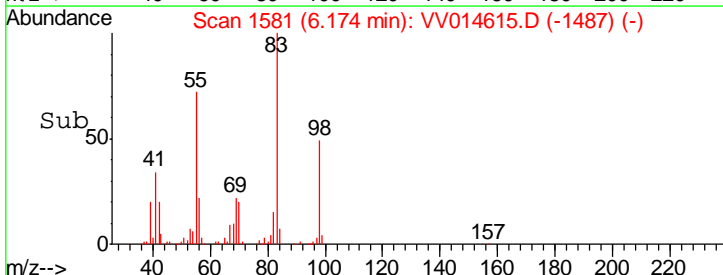
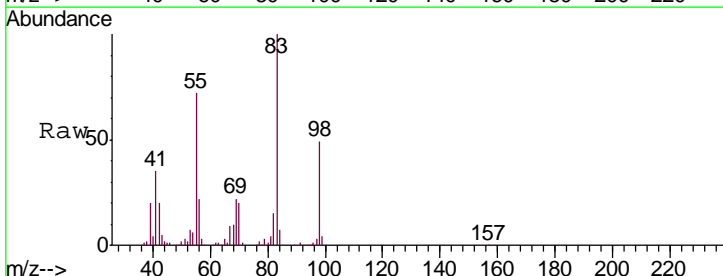
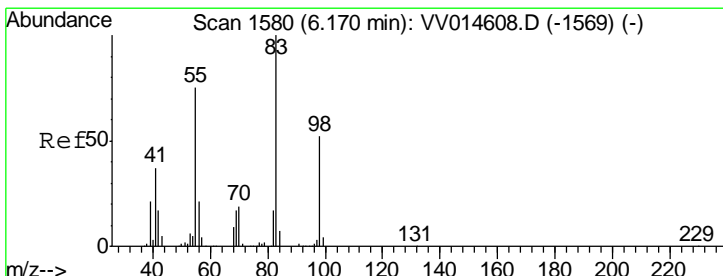
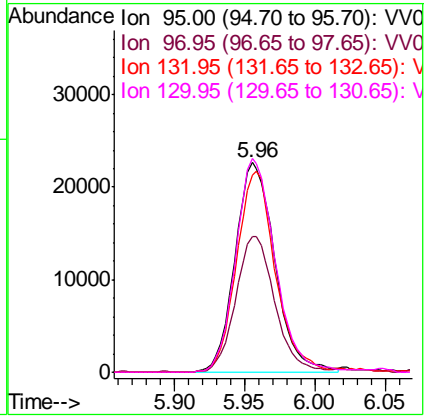


#34
 Trichloroethene
 Concen: 23.648 ug/L
 RT: 5.96 min Scan# 1513
 Delta R.T. 0.00 min
 Lab File: VV014615.D
 Acq: 19 Feb 2020 18:59

Instrument :
 MSVOA_V
 ClientSampled :
 MDL02

Tgt Ion: 95 Resp: 44861

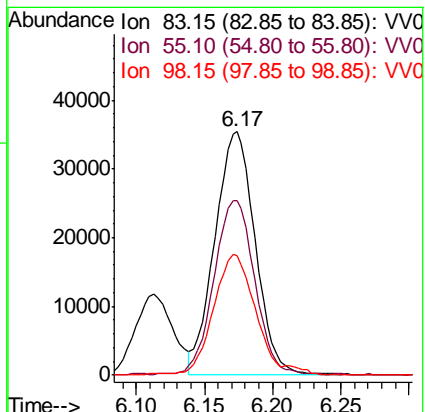
Ion	Ratio	Lower	Upper
95	100		
97	64.7	45.4	84.2
132	94.0	72.4	134.4
130	101.9	73.7	136.9

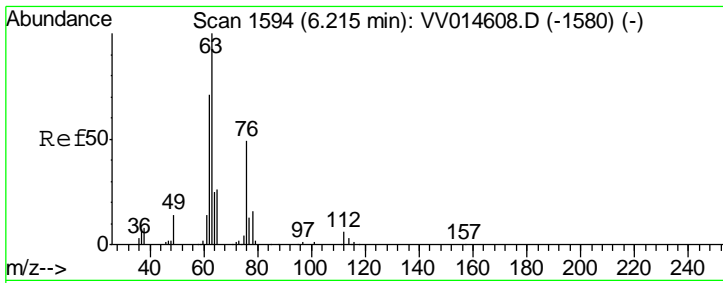


#35
 Methylcyclohexane
 Concen: 22.943 ug/L
 RT: 6.17 min Scan# 1581
 Delta R.T. 0.00 min
 Lab File: VV014615.D
 Acq: 19 Feb 2020 18:59

Tgt Ion: 83 Resp: 72335

Ion	Ratio	Lower	Upper
83	100		
55	71.7	57.1	85.7
98	51.5	40.2	60.2

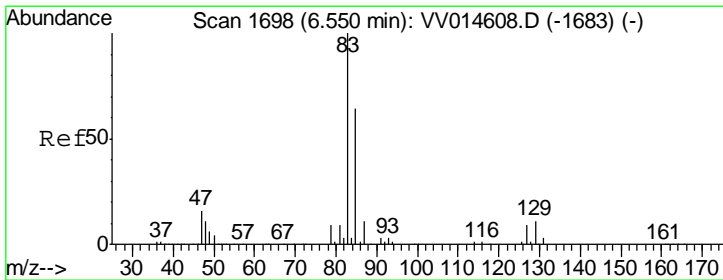
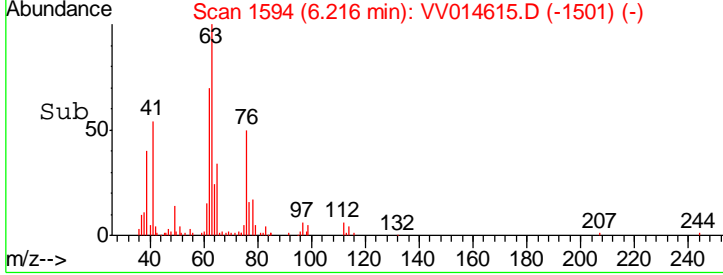
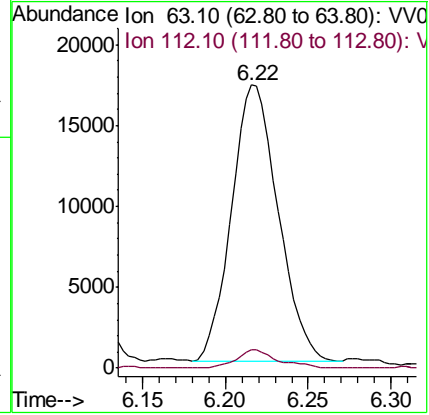
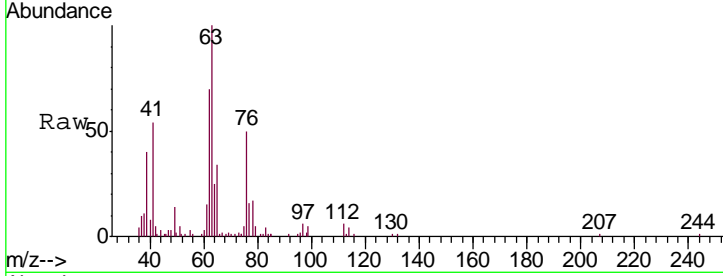




#37
 1,2-Dichloropropane
 Concen: 21.697 ug/L
 RT: 6.22 min Scan# 1594
 Delta R.T. 0.00 min
 Lab File: VV014615.D
 Acq: 19 Feb 2020 18:59

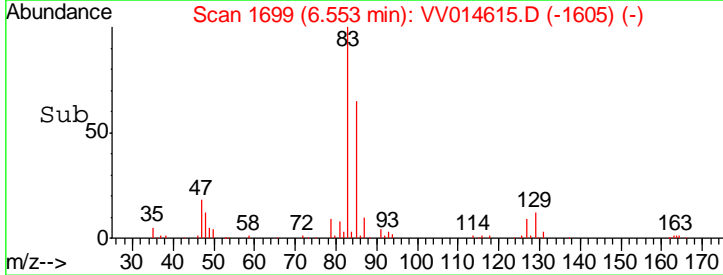
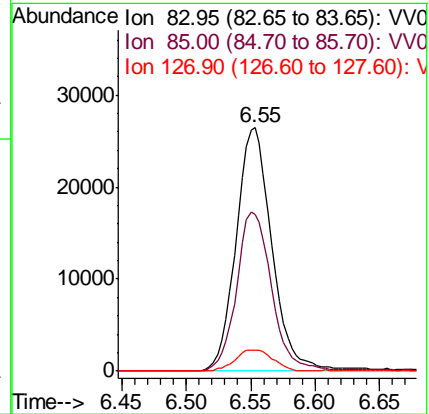
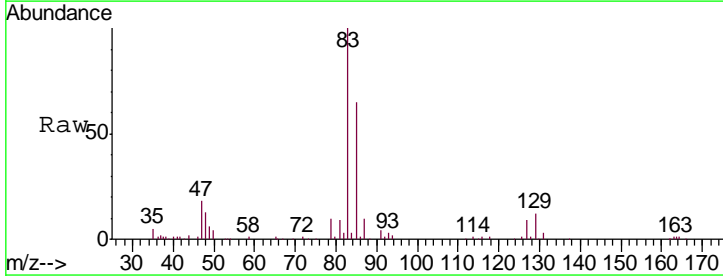
Instrument : MSVOA_V
 ClientSampled : MDL02

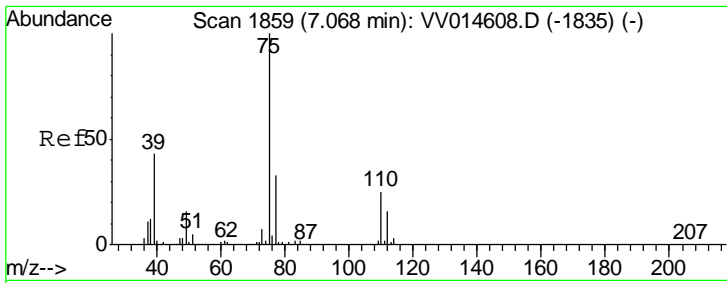
Tgt Ion	Resp	Lower	Upper
63	100		
112	5.8	4.3	6.5



#38
 Bromodichloromethane
 Concen: 23.062 ug/L
 RT: 6.55 min Scan# 1699
 Delta R.T. 0.00 min
 Lab File: VV014615.D
 Acq: 19 Feb 2020 18:59

Tgt Ion	Resp	Lower	Upper
83	100		
85	64.6	45.2	84.0
127	8.6	7.0	10.6

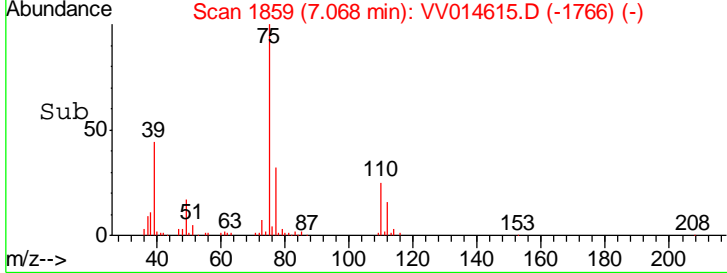
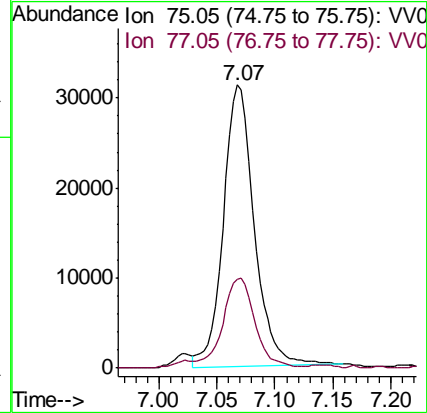
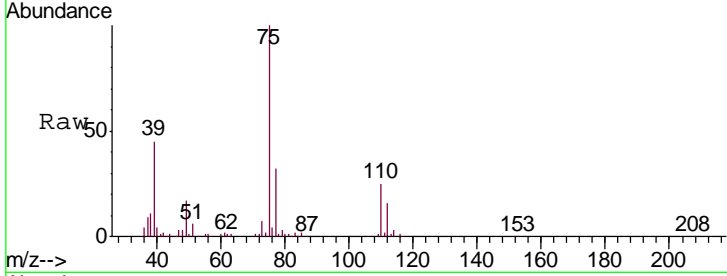




#39
 cis-1,3-Dichloropropene
 Concen: 23.319 ug/L
 RT: 7.07 min Scan# 1859
 Delta R.T. 0.00 min
 Lab File: VV014615.D
 Acq: 19 Feb 2020 18:59

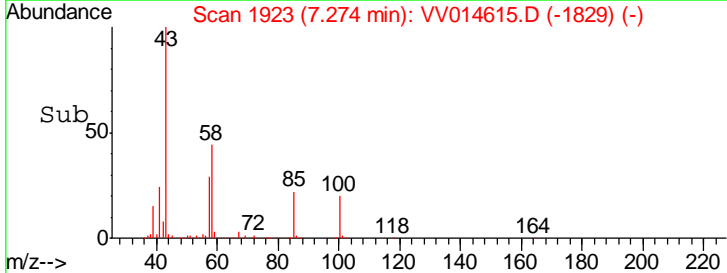
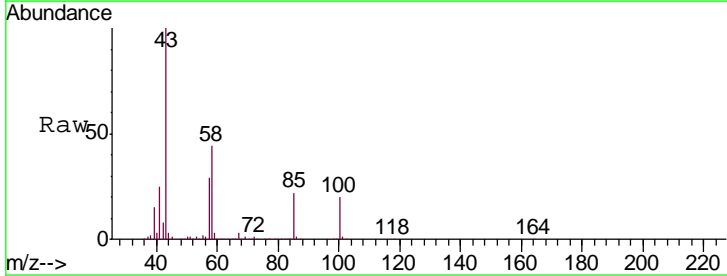
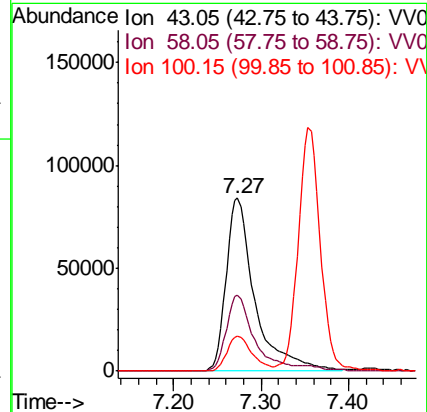
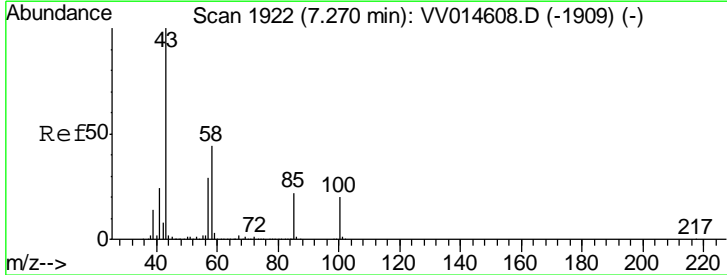
Instrument : MSVOA_V
 ClientSampled : MDL02

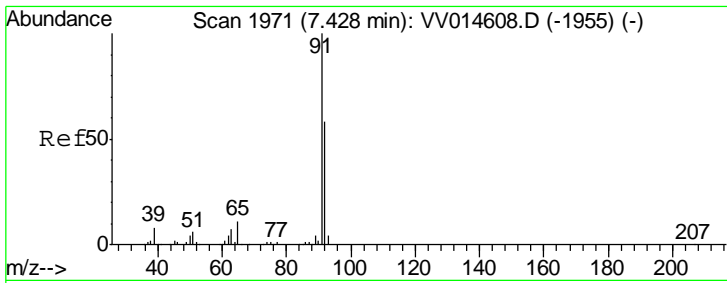
Tgt Ion: 75 Resp: 57980
 Ion Ratio Lower Upper
 75 100
 77 31.5 22.8 42.4



#40
 4-Methyl-2-pentanone
 Concen: 255.842 ug/L
 RT: 7.27 min Scan# 1923
 Delta R.T. 0.00 min
 Lab File: VV014615.D
 Acq: 19 Feb 2020 18:59

Tgt Ion: 43 Resp: 192036
 Ion Ratio Lower Upper
 43 100
 58 42.2 36.2 54.2
 100 18.0 14.7 22.1

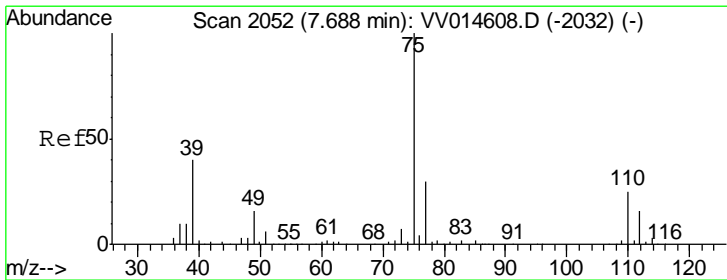
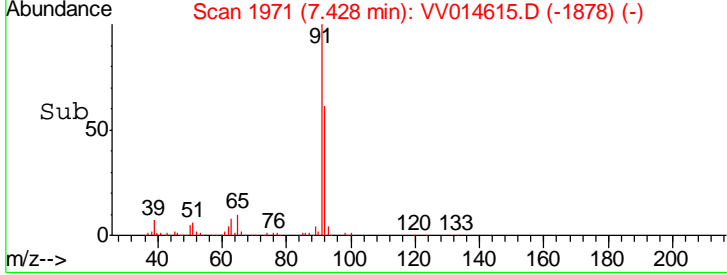
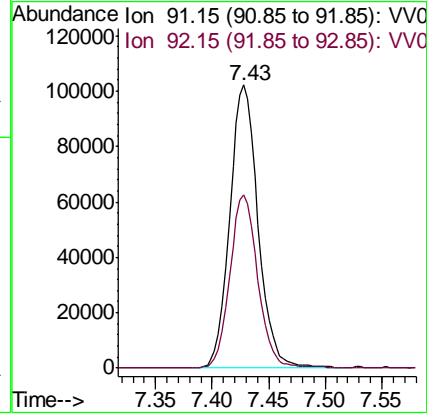
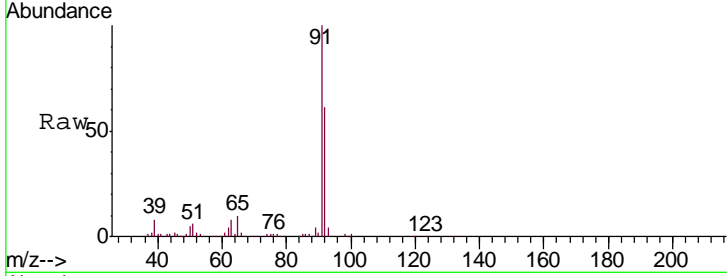




#42
 Toluene
 Concen: 24.370 ug/L
 RT: 7.43 min Scan# 1971
 Delta R.T. 0.00 min
 Lab File: VV014615.D
 Acq: 19 Feb 2020 18:59

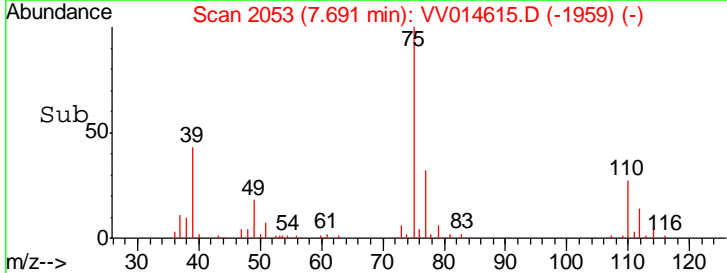
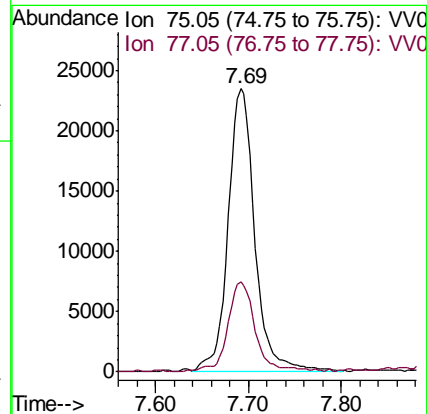
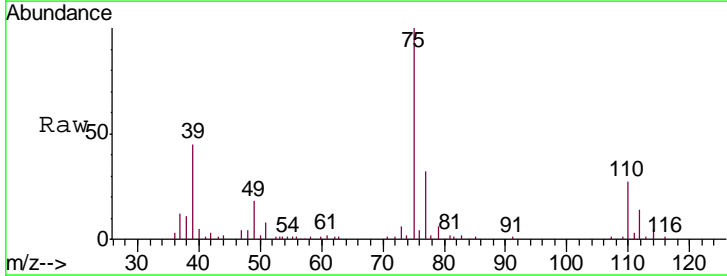
Instrument :
 MSVOA_V
 ClientSampled :
 MDL02

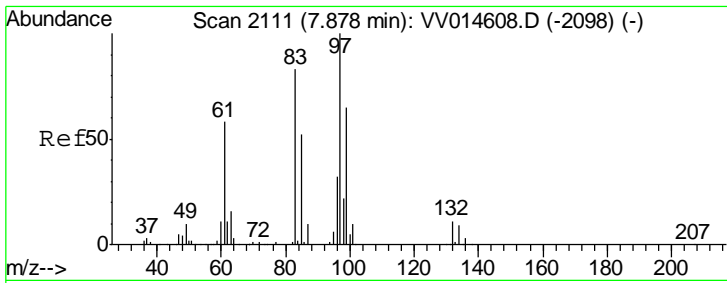
Tgt Ion: 91 Resp: 178057
 Ion Ratio Lower Upper
 91 100
 92 61.1 40.7 75.5



#44
 trans-1,3-Dichloropropene
 Concen: 23.723 ug/L
 RT: 7.69 min Scan# 2053
 Delta R.T. 0.00 min
 Lab File: VV014615.D
 Acq: 19 Feb 2020 18:59

Tgt Ion: 75 Resp: 47023
 Ion Ratio Lower Upper
 75 100
 77 31.6 21.0 39.0

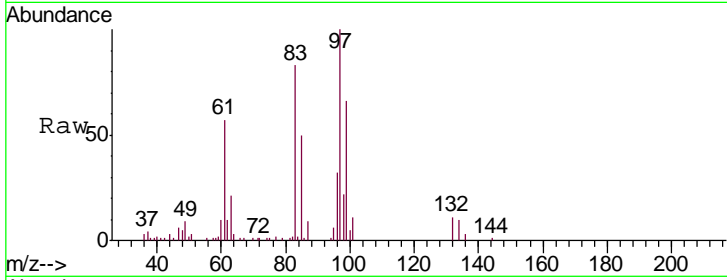




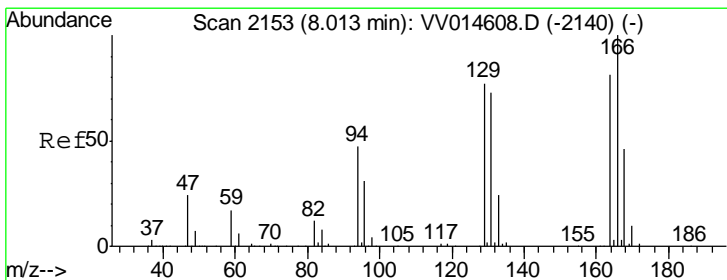
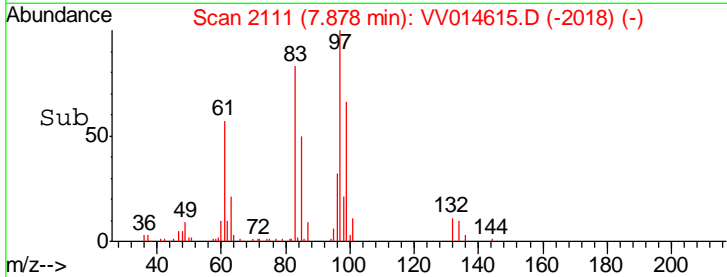
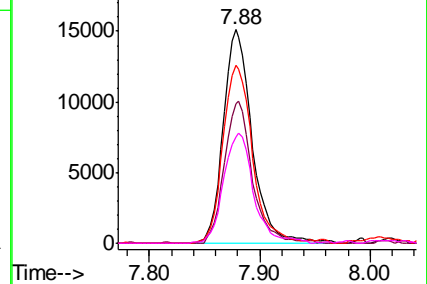
#45
 1,1,2-Trichloroethane
 Concen: 23.643 ug/L
 RT: 7.88 min Scan# 2111
 Delta R.T. 0.00 min
 Lab File: VV014615.D
 Acq: 19 Feb 2020 18:59

Instrument :
 MSVOA_V
 ClientSampled :
 MDL02

Tgt Ion	Resp	Lower	Upper
97	100		
99	65.5	45.2	84.0
83	83.2	58.3	108.3
85	49.8	36.3	67.5

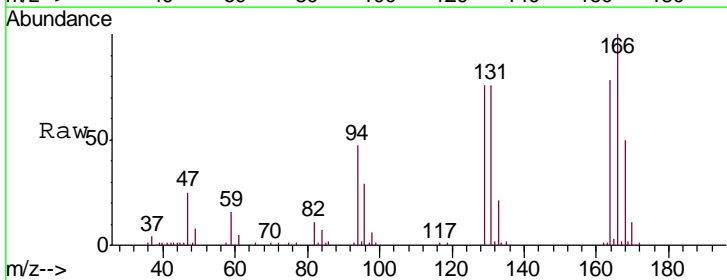


Abundance Ion 96.95 (96.65 to 97.65): VV0
 Ion 99.05 (98.75 to 99.75): VV0
 Ion 82.95 (82.65 to 83.65): VV0
 Ion 85.00 (84.70 to 85.70): VV0

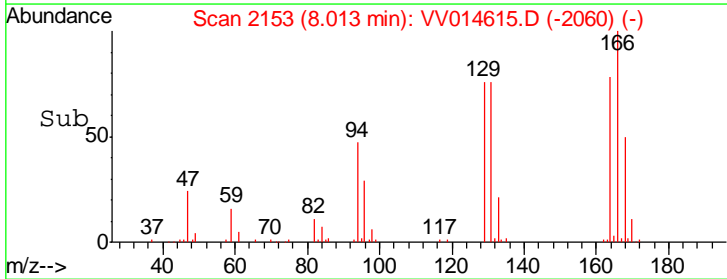
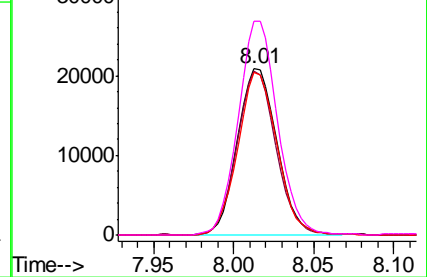


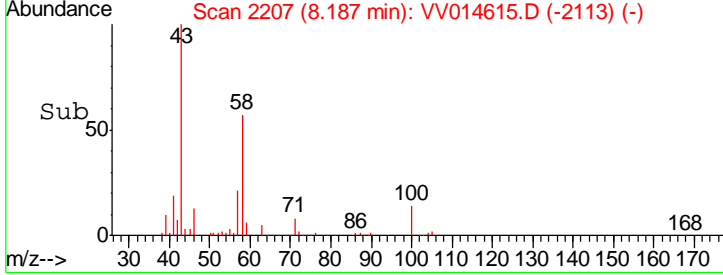
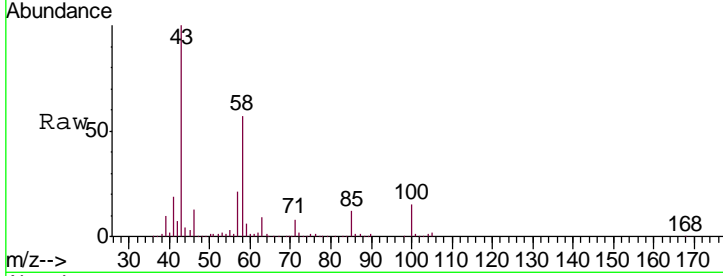
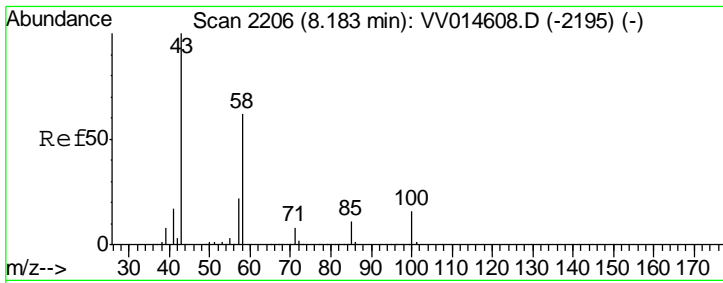
#47
 Tetrachloroethene
 Concen: 23.660 ug/L
 RT: 8.01 min Scan# 2153
 Delta R.T. 0.00 min
 Lab File: VV014615.D
 Acq: 19 Feb 2020 18:59

Tgt Ion	Resp	Lower	Upper
164	100		
129	98.4	67.0	124.4
131	98.2	63.6	118.2
166	128.8	86.7	161.1



Abundance Ion 163.90 (163.60 to 164.60): V
 Ion 128.95 (128.65 to 129.65): V
 Ion 130.95 (130.65 to 131.65): V
 Ion 165.90 (165.60 to 166.60): V



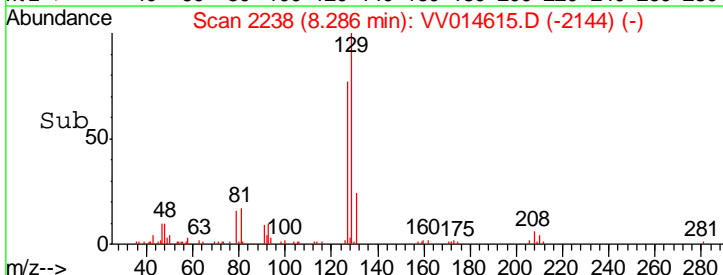
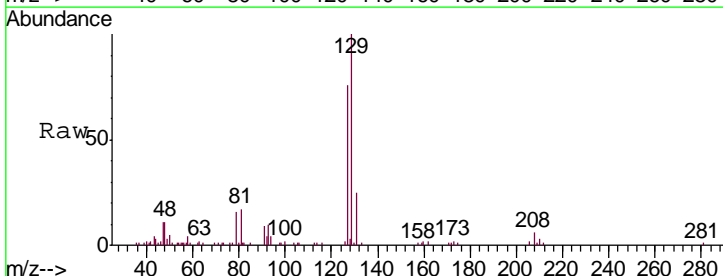
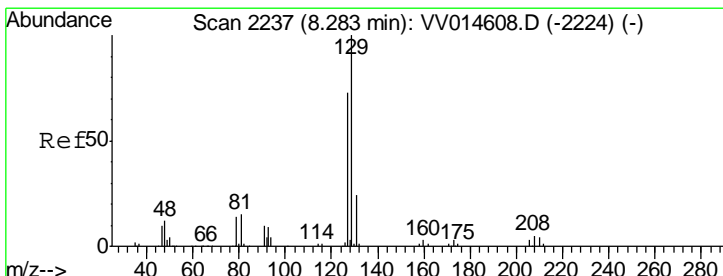
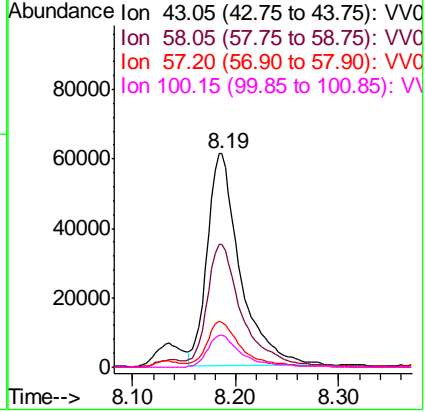


#48
 2-Hexanone
 Concen: 250.981 ug/L
 RT: 8.19 min Scan# 2207
 Delta R.T. 0.00 min
 Lab File: VV014615.D
 Acq: 19 Feb 2020 18:59

Instrument : MSVOA_V
 ClientSampled : MDL02

Tgt Ion: 43 Resp: 135547

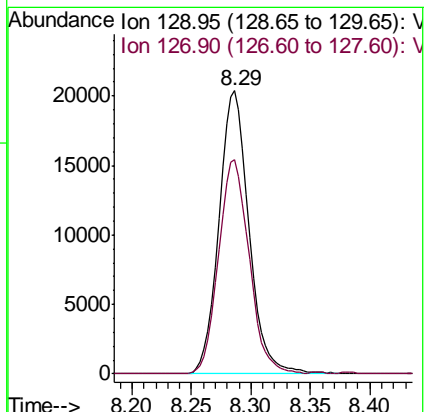
Ion	Ratio	Lower	Upper
43	100		
58	60.5	48.6	73.0
57	22.9	17.7	26.5
100	15.7	12.8	19.2

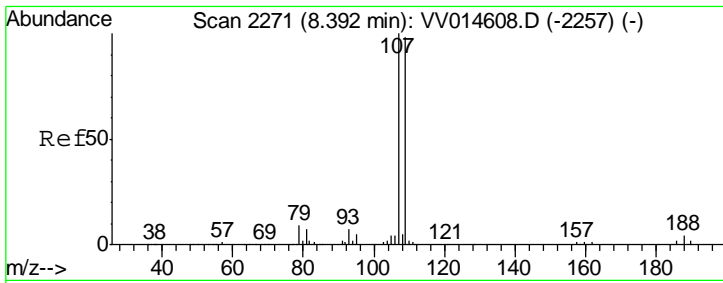


#49
 Dibromochloromethane
 Concen: 23.739 ug/L
 RT: 8.29 min Scan# 2238
 Delta R.T. 0.00 min
 Lab File: VV014615.D
 Acq: 19 Feb 2020 18:59

Tgt Ion: 129 Resp: 35609

Ion	Ratio	Lower	Upper
129	100		
127	75.8	50.9	94.5

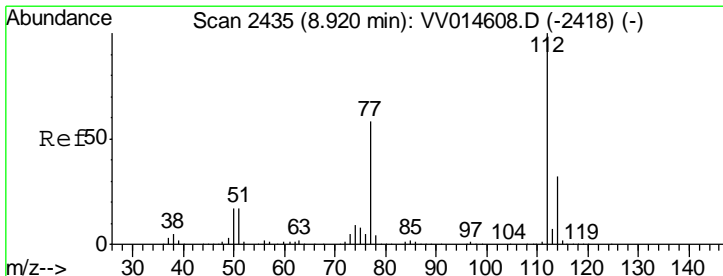
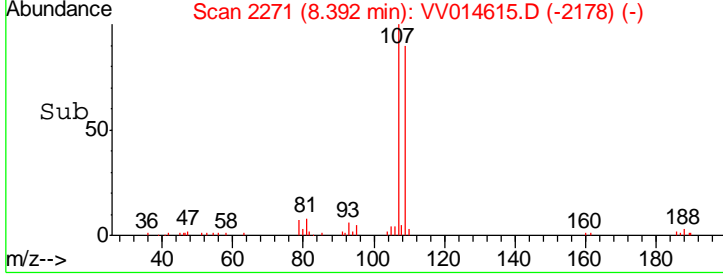
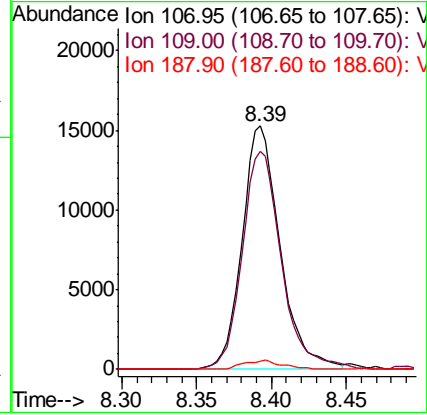
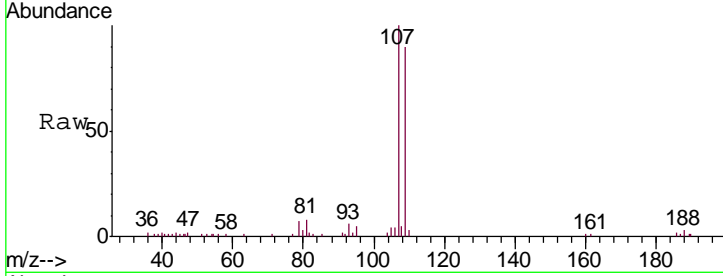




#50
 1,2-Dibromoethane
 Concen: 24.497 ug/L
 RT: 8.39 min Scan# 2271
 Delta R.T. 0.00 min
 Lab File: VV014615.D
 Acq: 19 Feb 2020 18:59

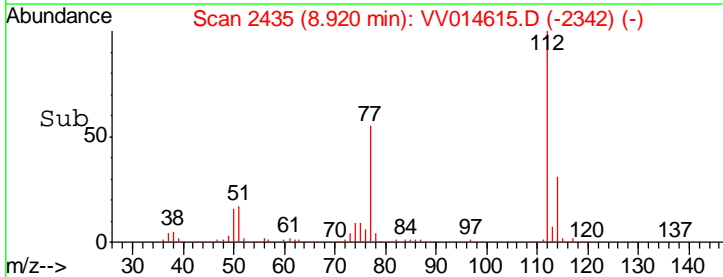
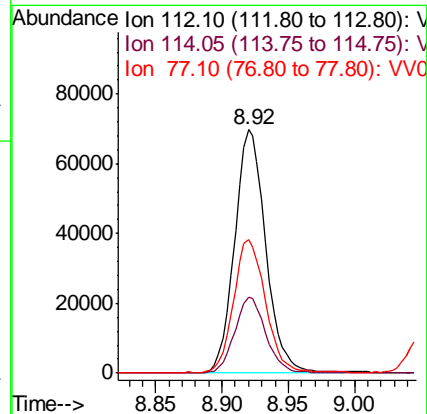
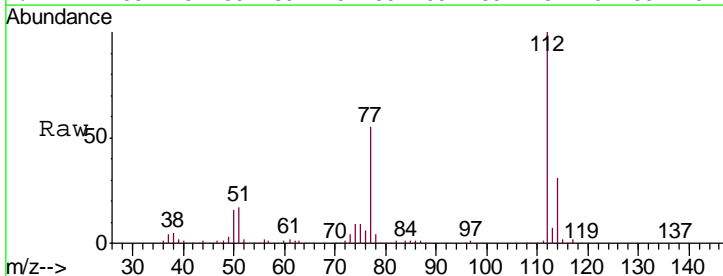
Instrument :
 MSVOA_V
 ClientSampled :
 MDL02

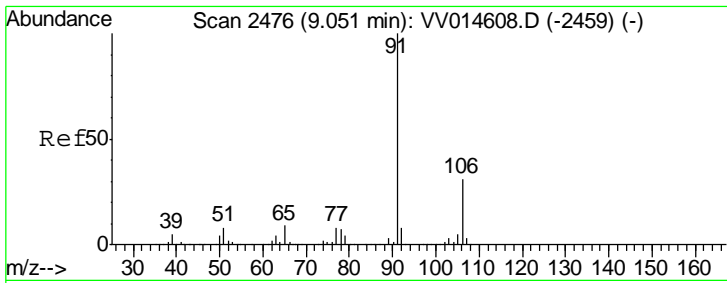
Tgt Ion	Resp	Lower	Upper
107	100		
109	89.8	68.7	127.5
188	3.4	2.9	4.3



#51
 Chlorobenzene
 Concen: 23.595 ug/L
 RT: 8.92 min Scan# 2435
 Delta R.T. 0.00 min
 Lab File: VV014615.D
 Acq: 19 Feb 2020 18:59

Tgt Ion	Resp	Lower	Upper
112	100		
114	31.0	22.5	41.9
77	54.9	46.6	70.0

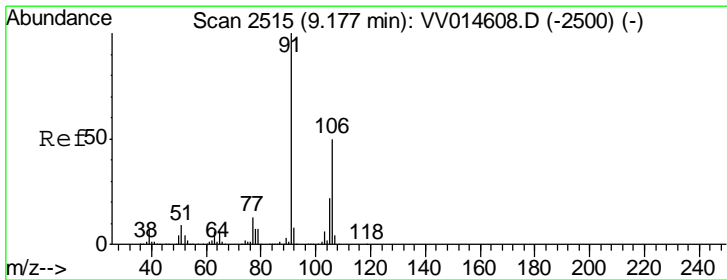
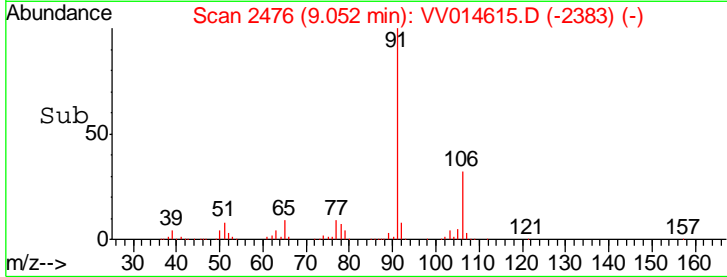
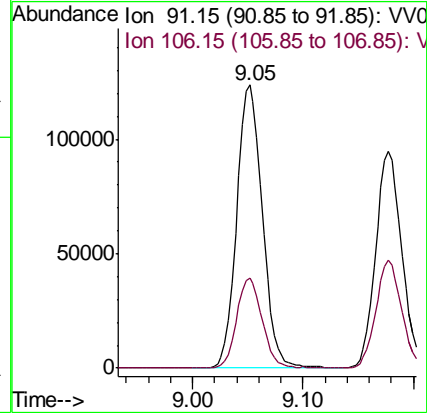
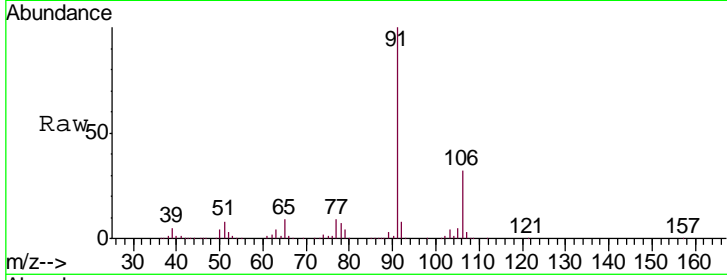




#52
 Ethylbenzene
 Concen: 23.996 ug/L
 RT: 9.05 min Scan# 2476
 Delta R.T. 0.00 min
 Lab File: VV014615.D
 Acq: 19 Feb 2020 18:59

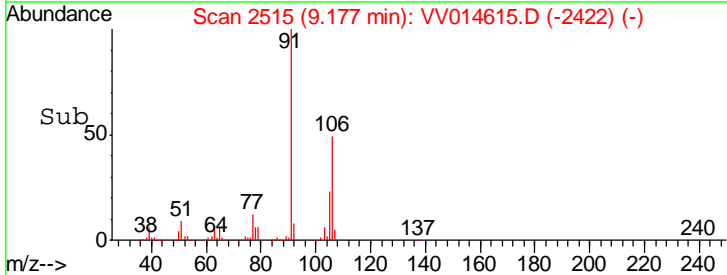
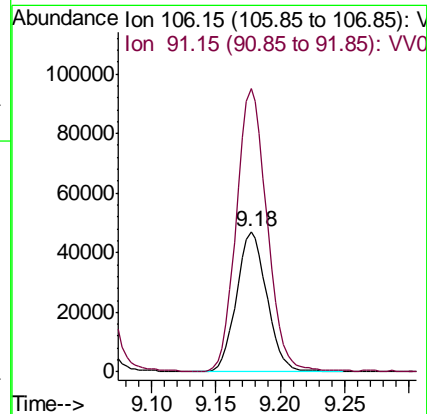
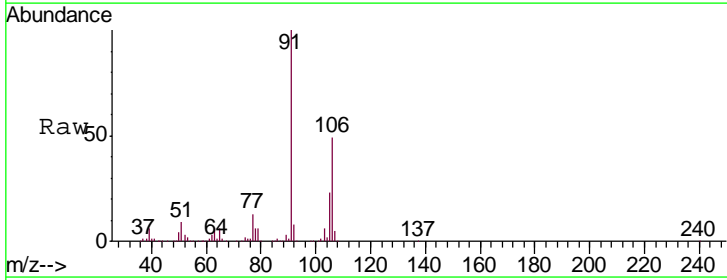
Instrument :
 MSVOA_V
 ClientSampled :
 MDL02

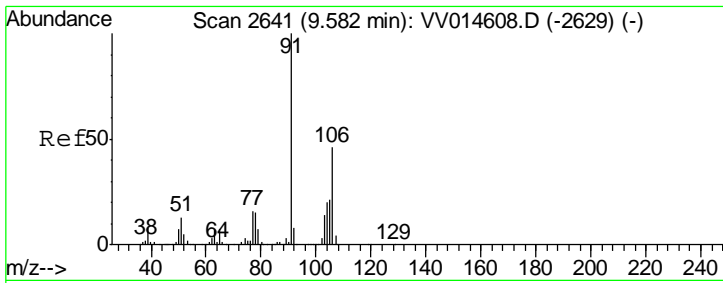
Tgt Ion: 91 Resp: 199615
 Ion Ratio Lower Upper
 91 100
 106 32.0 21.8 40.6



#53
 m,p-xylene
 Concen: 24.030 ug/L
 RT: 9.18 min Scan# 2515
 Delta R.T. 0.00 min
 Lab File: VV014615.D
 Acq: 19 Feb 2020 18:59

Tgt Ion: 106 Resp: 76494
 Ion Ratio Lower Upper
 106 100
 91 202.2 139.6 259.2

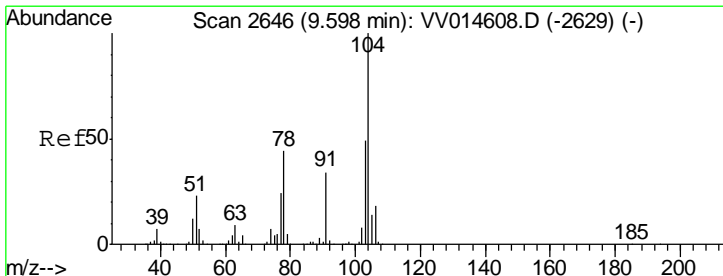
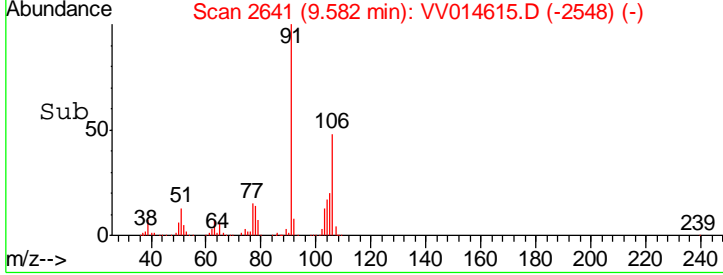
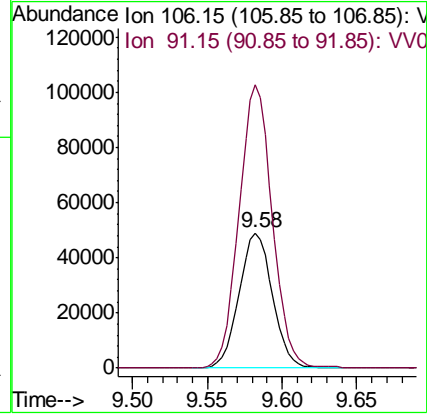
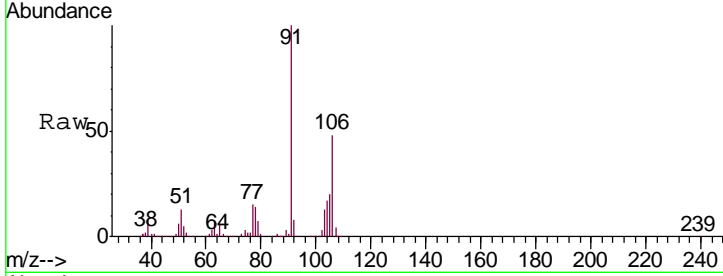




#54
 o-xylene
 Concen: 24.942 ug/L
 RT: 9.58 min Scan# 2641
 Delta R.T. 0.00 min
 Lab File: VV014615.D
 Acq: 19 Feb 2020 18:59

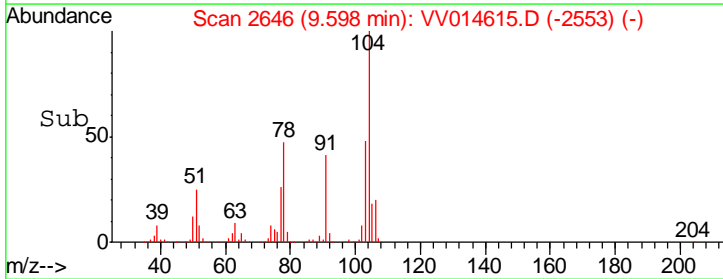
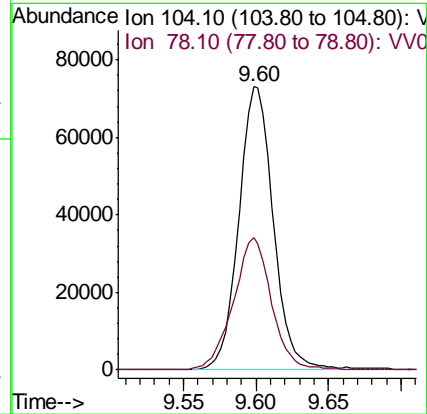
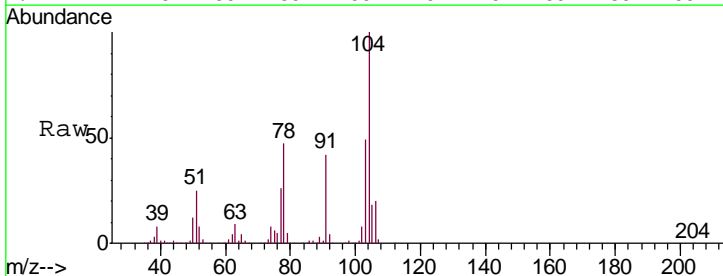
Instrument :
 MSVOA_V
 ClientSampled :
 MDL02

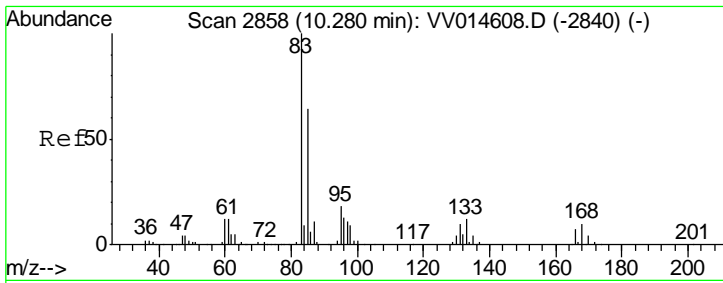
Tgt Ion:106 Resp: 76247
 Ion Ratio Lower Upper
 106 100
 91 209.8 153.9 285.7



#55
 Styrene
 Concen: 23.886 ug/L
 RT: 9.60 min Scan# 2646
 Delta R.T. 0.00 min
 Lab File: VV014615.D
 Acq: 19 Feb 2020 18:59

Tgt Ion:104 Resp: 120601
 Ion Ratio Lower Upper
 104 100
 78 46.6 30.8 57.2

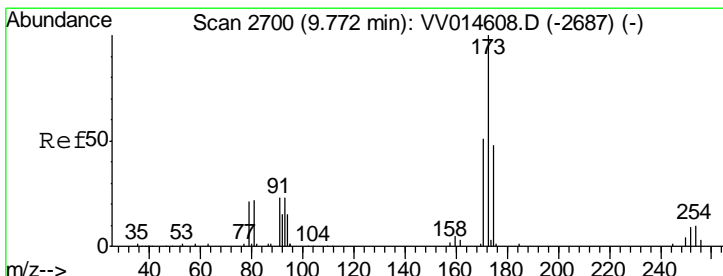
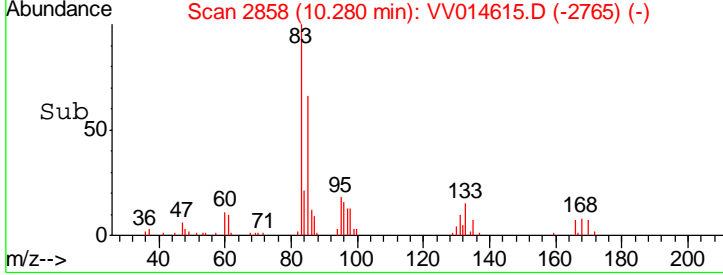
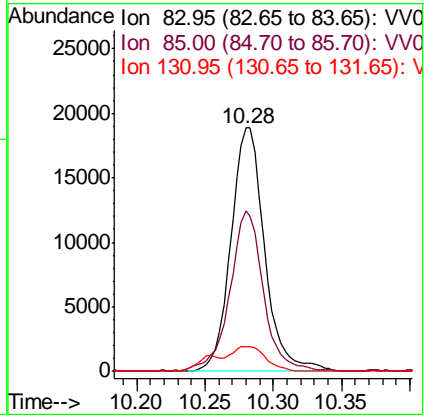
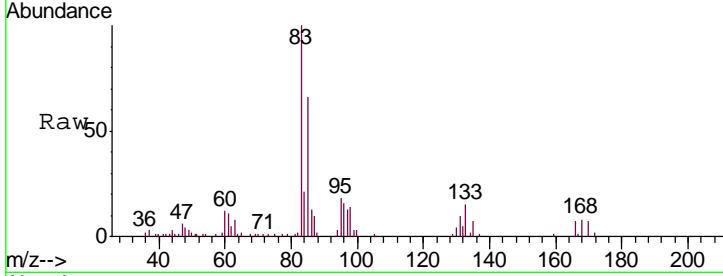




#57
 1,1,2,2-Tetrachloroethane
 Concen: 24.525 ug/L
 RT: 10.28 min Scan# 2858
 Delta R.T. 0.00 min
 Lab File: VV014615.D
 Acq: 19 Feb 2020 18:59

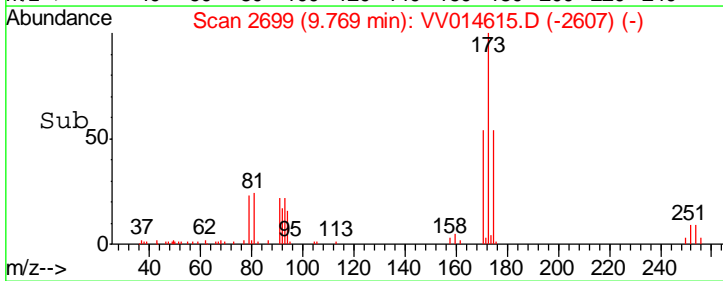
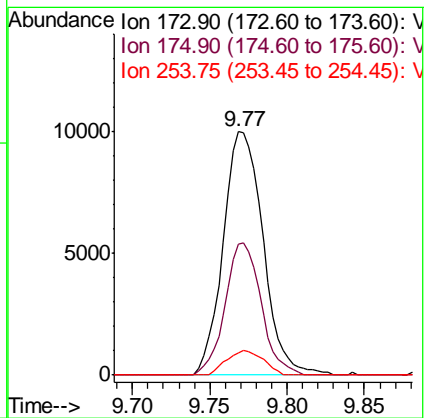
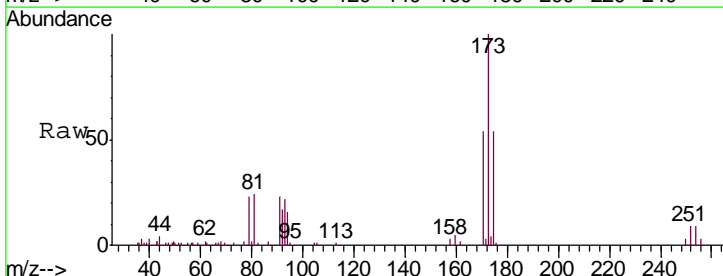
Instrument : MSVOA_V
 ClientSampled : MDL02

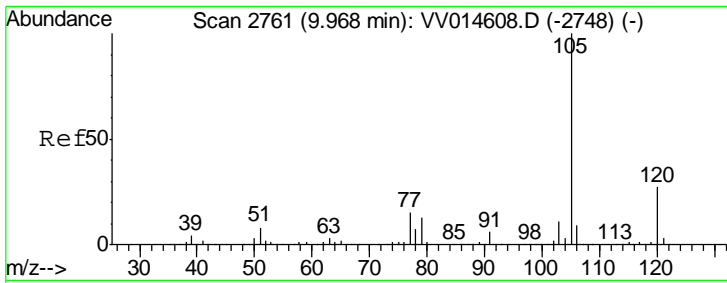
Tgt Ion	Resp	Lower	Upper
83	32330		
85	65.7	44.6	82.8
131	10.1	8.1	12.1



#59
 Bromoform
 Concen: 21.690 ug/L
 RT: 9.77 min Scan# 2699
 Delta R.T. -0.00 min
 Lab File: VV014615.D
 Acq: 19 Feb 2020 18:59

Tgt Ion	Resp	Lower	Upper
173	17871		
175	49.1	40.0	60.0
254	9.4	8.2	12.2

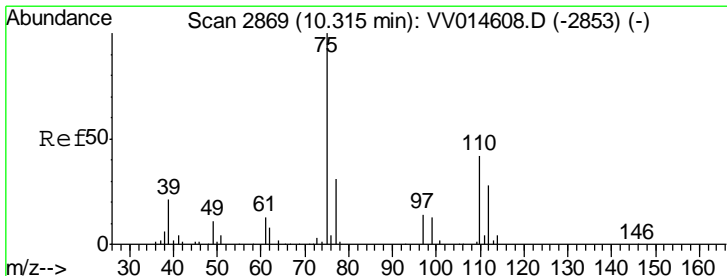
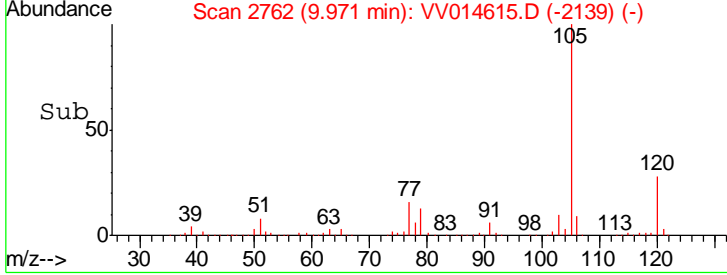
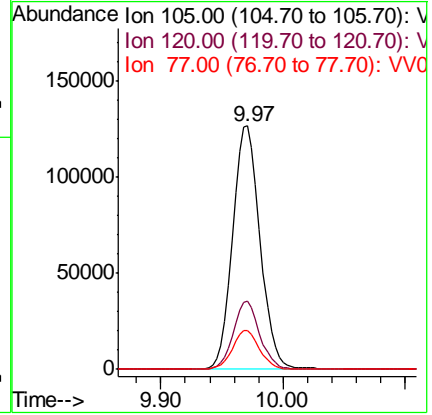
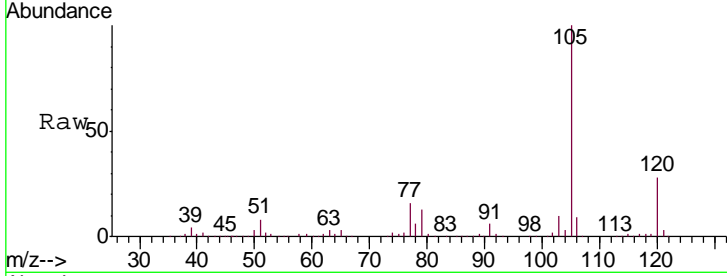




#60
 Isopropylbenzene
 Concen: 22.100 ug/L
 RT: 9.97 min Scan# 2762
 Delta R.T. 0.00 min
 Lab File: VV014615.D
 Acq: 19 Feb 2020 18:59

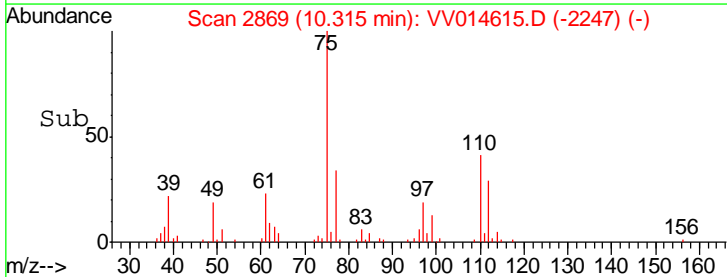
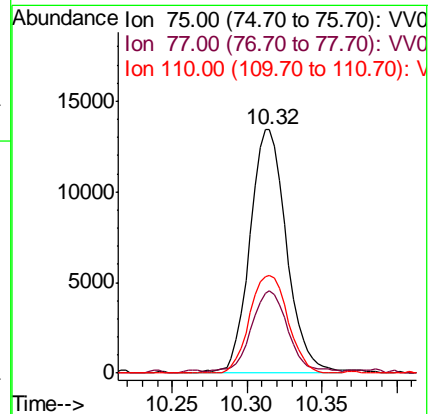
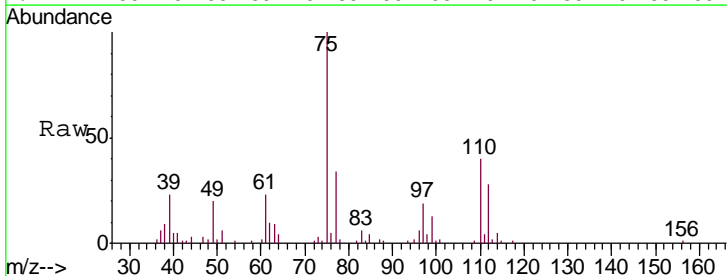
Instrument :
 MSVOA_V
 ClientSampled :
 MDL02

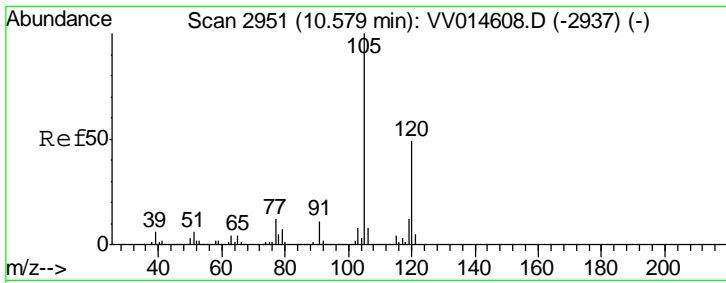
Tgt Ion	Resp	Lower	Upper
105	198890		
120	26.8	21.3	31.9
77	15.8	12.2	18.4



#61
 1,2,3-Trichloropropane
 Concen: 22.302 ug/L
 RT: 10.32 min Scan# 2869
 Delta R.T. 0.00 min
 Lab File: VV014615.D
 Acq: 19 Feb 2020 18:59

Tgt Ion	Resp	Lower	Upper
75	22948		
77	31.4	26.3	39.5
110	41.9	33.6	50.4

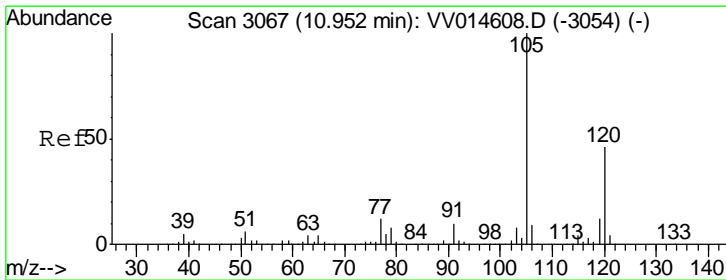
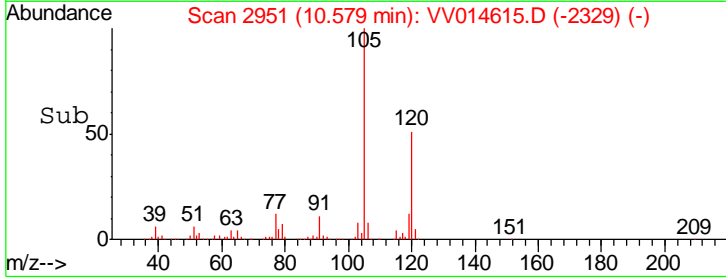
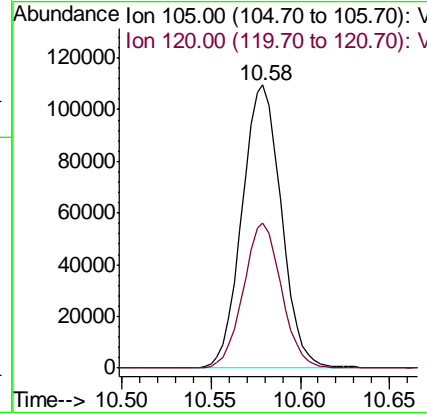
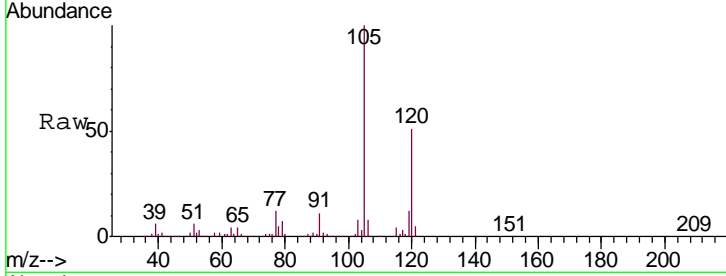




#62
 1,3,5-Trimethylbenzene
 Concen: 22.326 ug/L
 RT: 10.58 min Scan# 2951
 Delta R.T. 0.00 min
 Lab File: VV014615.D
 Acq: 19 Feb 2020 18:59

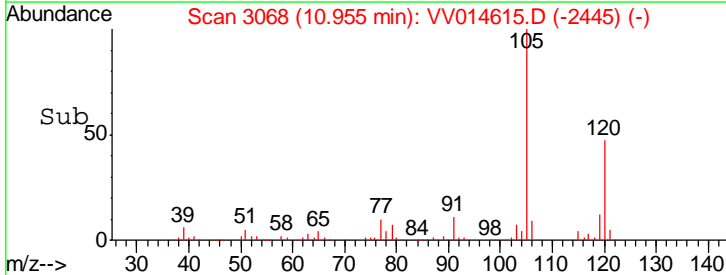
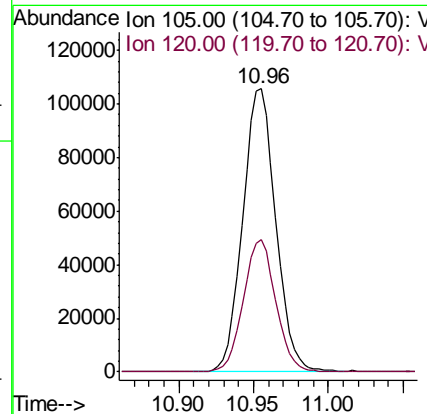
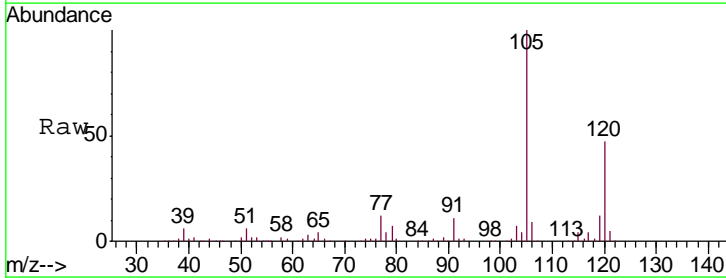
Instrument :
 MSVOA_V
 ClientSampled :
 MDL02

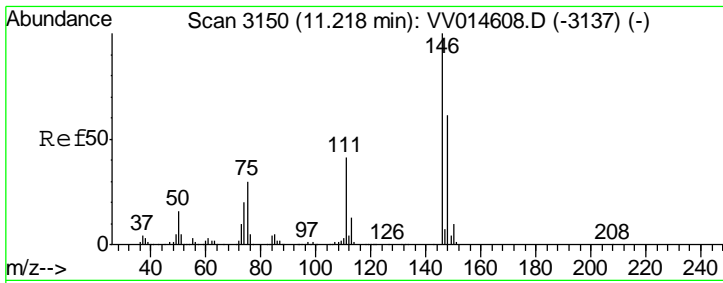
Tgt Ion:105 Resp: 167683
 Ion Ratio Lower Upper
 105 100
 120 50.0 38.7 58.1



#63
 1,2,4-Trimethylbenzene
 Concen: 22.067 ug/L
 RT: 10.96 min Scan# 3068
 Delta R.T. 0.00 min
 Lab File: VV014615.D
 Acq: 19 Feb 2020 18:59

Tgt Ion:105 Resp: 162592
 Ion Ratio Lower Upper
 105 100
 120 45.7 36.5 54.7

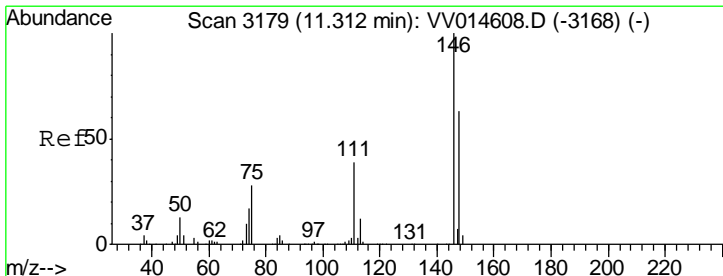
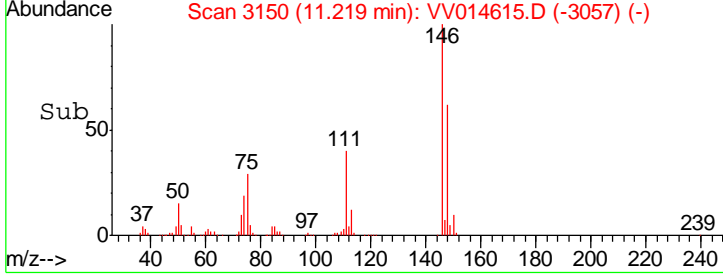
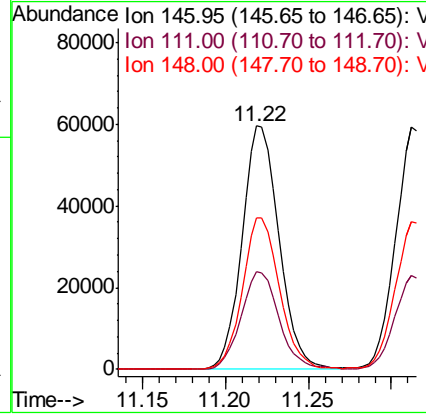
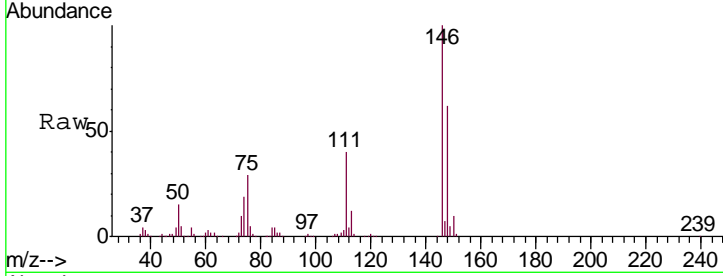




#64
 1,3-Dichlorobenzene
 Concen: 21.836 ug/L
 RT: 11.22 min Scan# 3150
 Delta R.T. 0.00 min
 Lab File: VV014615.D
 Acq: 19 Feb 2020 18:59

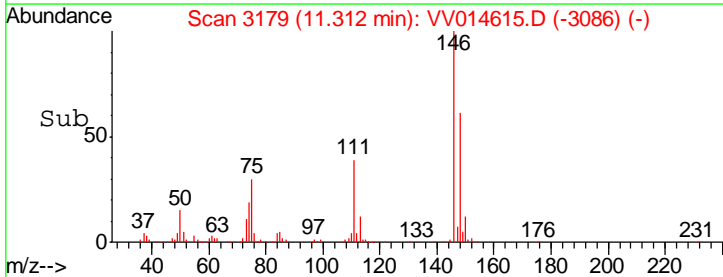
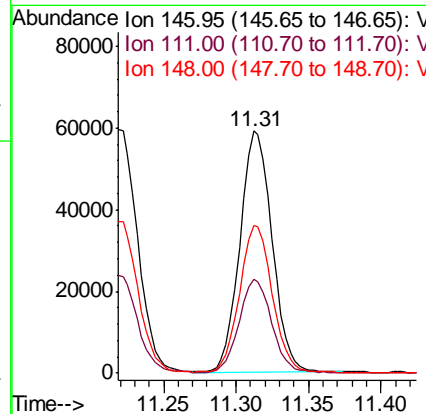
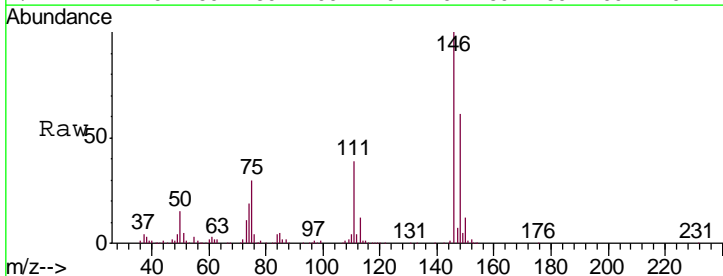
Instrument : MSVOA_V
 ClientSampled : MDL02

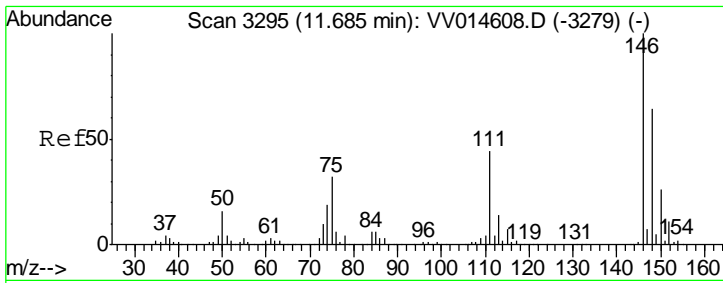
Tgt Ion	Resp	Lower	Upper
146	100		
111	39.9	28.4	52.8
148	62.2	43.0	79.8



#65
 1,4-Dichlorobenzene
 Concen: 22.047 ug/L
 RT: 11.31 min Scan# 3179
 Delta R.T. 0.00 min
 Lab File: VV014615.D
 Acq: 19 Feb 2020 18:59

Tgt Ion	Resp	Lower	Upper
146	100		
111	38.6	27.6	51.4
148	60.8	44.3	82.3

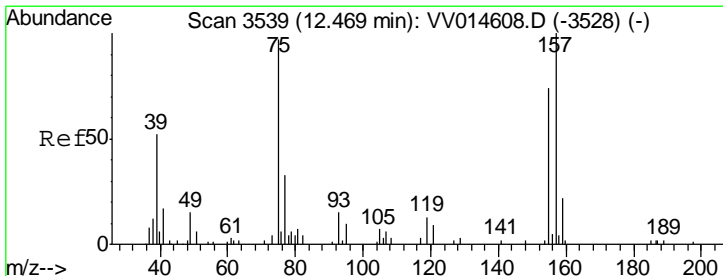
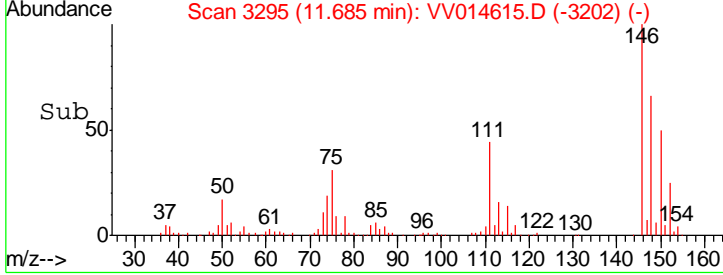
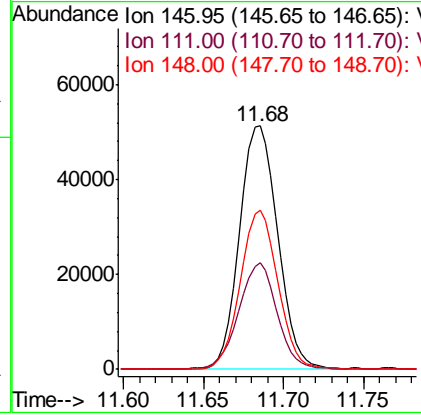
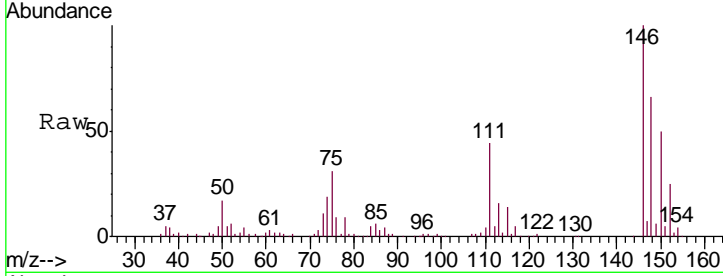




#67
 1,2-Dichlorobenzene
 Concen: 22.617 ug/L
 RT: 11.68 min Scan# 3295
 Delta R.T. 0.00 min
 Lab File: VV014615.D
 Acq: 19 Feb 2020 18:59

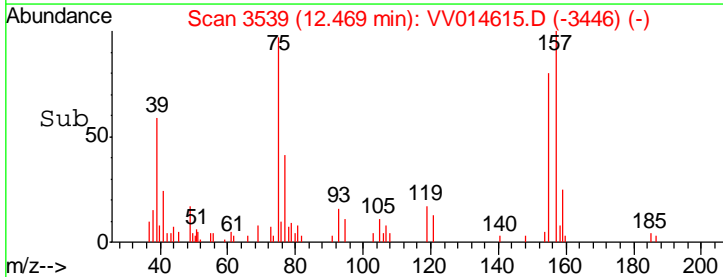
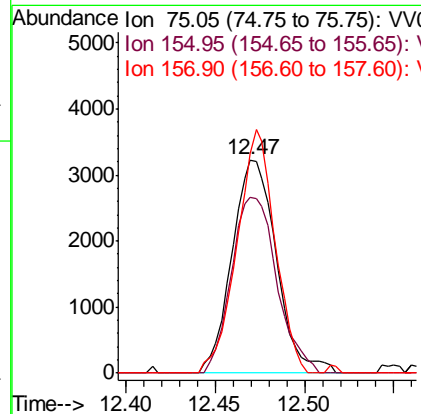
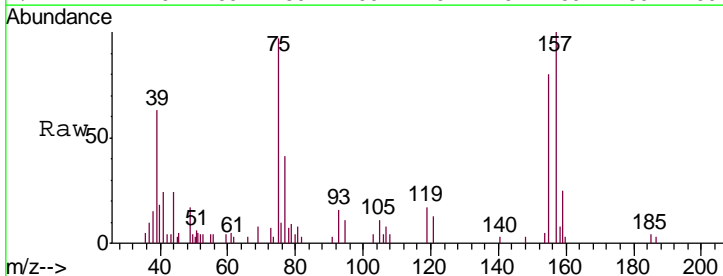
Instrument : MSVOA_V
 ClientSampled : MDL02

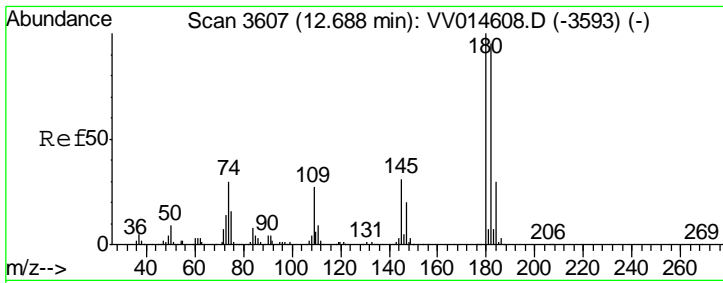
Tgt Ion	Resp	Lower	Upper
146	100		
111	43.7	35.0	52.4
148	65.6	51.4	77.0



#68
 1,2-Dibromo-3-chloropropane
 Concen: 23.058 ug/L
 RT: 12.47 min Scan# 3539
 Delta R.T. 0.00 min
 Lab File: VV014615.D
 Acq: 19 Feb 2020 18:59

Tgt Ion	Resp	Lower	Upper
75	100		
155	82.3	61.4	92.2
157	102.8	82.8	124.2



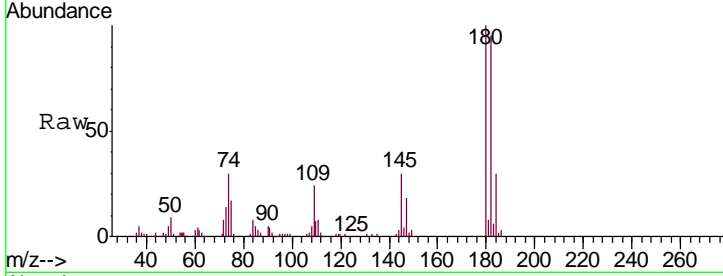


#69
 1,3,5-Trichlorobenzene
 Concen: 22.695 ug/L
 RT: 12.69 min Scan# 3607
 Delta R.T. 0.00 min
 Lab File: VV014615.D
 Acq: 19 Feb 2020 18:59

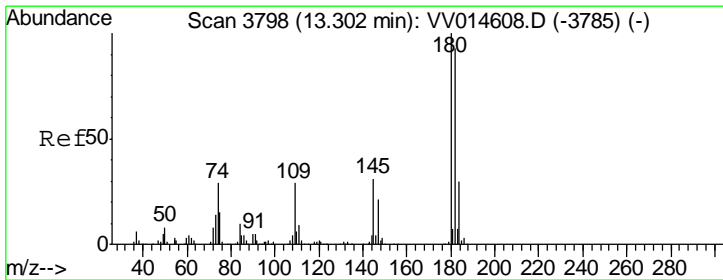
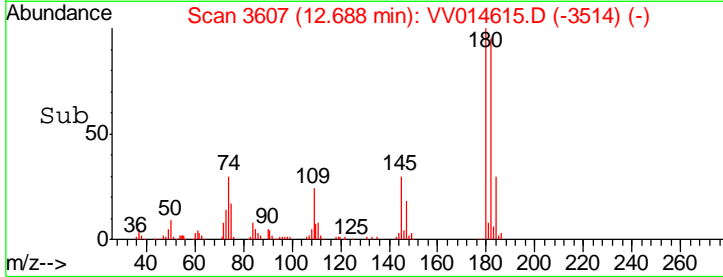
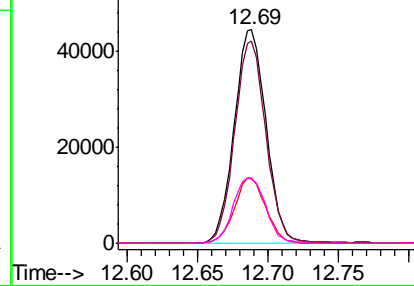
Instrument :
 MSVOA_V
 ClientSampled :
 MDL02

Tgt Ion:180 Resp: 70604

Ion	Ratio	Lower	Upper
180	100		
182	92.9	76.6	114.8
184	30.0	23.9	35.9
145	31.3	25.4	38.2



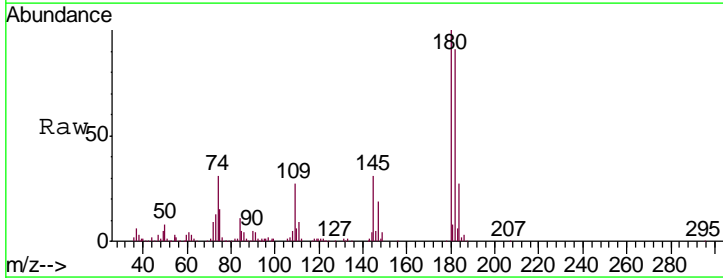
Abundance Ion 180.00 (179.70 to 180.70): V
 Ion 182.00 (181.70 to 182.70): V
 Ion 184.00 (183.70 to 184.70): V
 Ion 145.00 (144.70 to 145.70): V



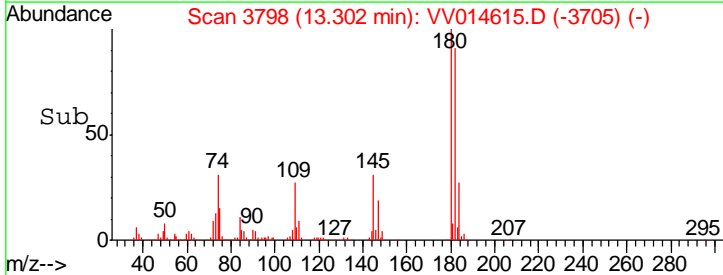
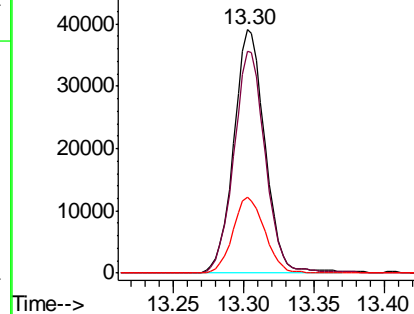
#70
 1,2,4-trichlorobenzene
 Concen: 23.209 ug/L
 RT: 13.30 min Scan# 3798
 Delta R.T. 0.00 min
 Lab File: VV014615.D
 Acq: 19 Feb 2020 18:59

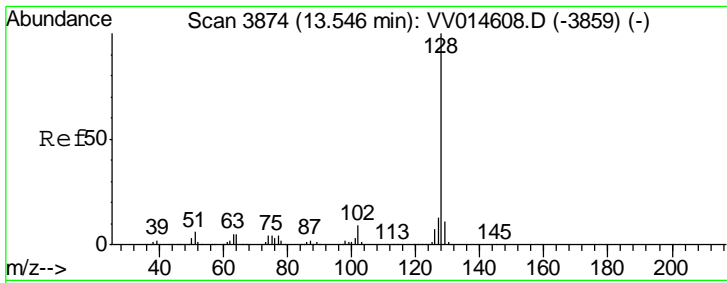
Tgt Ion:180 Resp: 60483

Ion	Ratio	Lower	Upper
180	100		
182	91.5	75.7	113.5
145	32.0	25.1	37.7



Abundance Ion 179.90 (179.60 to 180.60): V
 Ion 182.00 (181.70 to 182.70): V
 Ion 144.95 (144.65 to 145.65): V

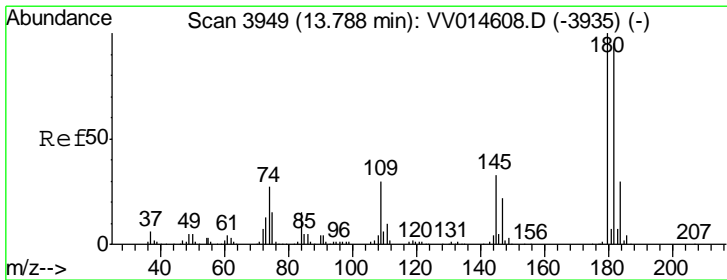
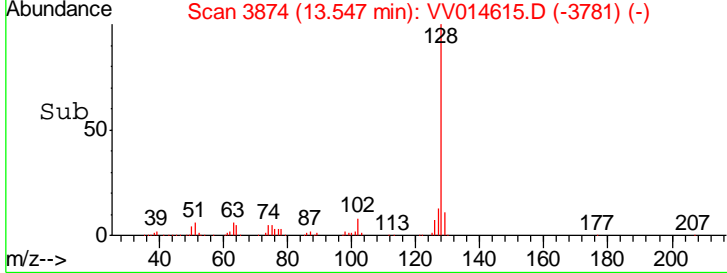
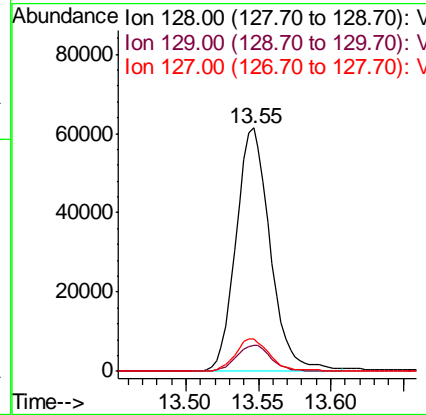
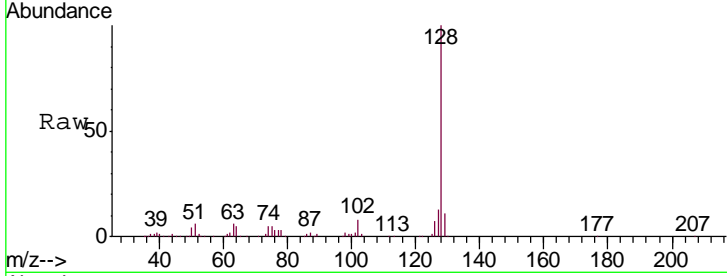




#71
 Naphthalene
 Concen: 22.851 ug/L
 RT: 13.55 min Scan# 3874
 Delta R.T. 0.00 min
 Lab File: VV014615.D
 Acq: 19 Feb 2020 18:59

Instrument :
 MSVOA_V
 ClientSampled :
 MDL02

Tgt Ion	Resp	Lower	Upper
128	100680		
129	10.8	8.7	13.1
127	13.7	10.4	15.6



#72
 1,2,3-Trichlorobenzene
 Concen: 23.402 ug/L
 RT: 13.79 min Scan# 3949
 Delta R.T. 0.00 min
 Lab File: VV014615.D
 Acq: 19 Feb 2020 18:59

Tgt Ion	Resp	Lower	Upper
180	53416		
182	92.9	75.0	112.6
145	34.5	26.7	40.1

