

Data File : VV014656.D  
 Acq On : 21 Feb 2020 16:29  
 Operator : SY/MD  
 Sample : L1608-04  
 Misc : 5.0mL/MSVOA\_V/WATER  
 ALS Vial : 15 Sample Multiplier: 1

Instrument :  
 MSVOA\_V  
 ClientSampleId :  
 C0AQ8

Quant Time: Feb 21 23:40:17 2020  
 Quant Method : Z:\VOASRV\HPCHEM1\MSVOA\_V\METHOD\SOMVLM022120WMA.M  
 Quant Title : VOC Analysis  
 QLast Update : Fri Feb 21 23:36:05 2020  
 Response via : Initial Calibration

Internal Standards	R.T.	QIon	Response	Conc	Units	Dev(Min)
1) 1,4-Difluorobenzene	5.66	114	171444	50.00	ug/L	0.00
28) Chlorobenzene-d5	8.89	117	159814	50.00	ug/L	0.00
60) 1,4-Dichlorobenzene-d4	11.29	152	75193	50.00	ug/L	0.00

System Monitoring Compounds

4) Vinyl Chloride-d3	1.32	65	42787	63.90	ug/L	0.00
Spiked Amount	50.000	Range	60 - 135	Recovery	=	127.80%
7) Chloroethane-d5	1.58	69	32320	66.60	ug/L	0.00
Spiked Amount	50.000	Range	70 - 130	Recovery	=	133.20%#
11) 1,1-Dichloroethene-d2	2.13	63	63306	50.72	ug/L	0.00
Spiked Amount	50.000	Range	60 - 125	Recovery	=	101.44%
21) 2-Butanone-d5	3.94	46	87425	140.47	ug/L	0.00
Spiked Amount	100.000	Range	40 - 130	Recovery	=	140.47%#
24) Chloroform-d	4.40	84	141931	64.74	ug/L	0.00
Spiked Amount	50.000	Range	70 - 125	Recovery	=	129.48%#
26) 1,2-Dichloroethane-d4	5.08	65	97619	69.65	ug/L	0.00
Spiked Amount	50.000	Range	70 - 125	Recovery	=	139.30%#
32) Benzene-d6	5.10	84	294054	69.52	ug/L	0.00
Spiked Amount	50.000	Range	70 - 125	Recovery	=	139.04%#
36) 1,2-Dichloropropane-d6	6.11	67	86339	70.00	ug/L	0.00
Spiked Amount	50.000	Range	70 - 120	Recovery	=	140.00%#
41) Toluene-d8	7.36	98	270721	66.45	ug/L	0.00
Spiked Amount	50.000	Range	80 - 120	Recovery	=	132.90%#
43) trans-1,3-Dichloropropene-	7.66	79	45831	66.33	ug/L	0.00
Spiked Amount	50.000	Range	60 - 125	Recovery	=	132.66%#
47) 2-Hexanone-d5	8.13	63	70151	141.91	ug/L	0.00
Spiked Amount	100.000	Range	45 - 130	Recovery	=	141.91%#
57) 1,1,2,2-Tetrachloroethane-	10.25	84	118634	69.42	ug/L	0.00
Spiked Amount	50.000	Range	65 - 120	Recovery	=	138.84%#
64) 1,2-Dichlorobenzene-d4	11.67	152	103866	70.60	ug/L	0.00
Spiked Amount	50.000	Range	80 - 120	Recovery	=	141.20%#

Target Compounds

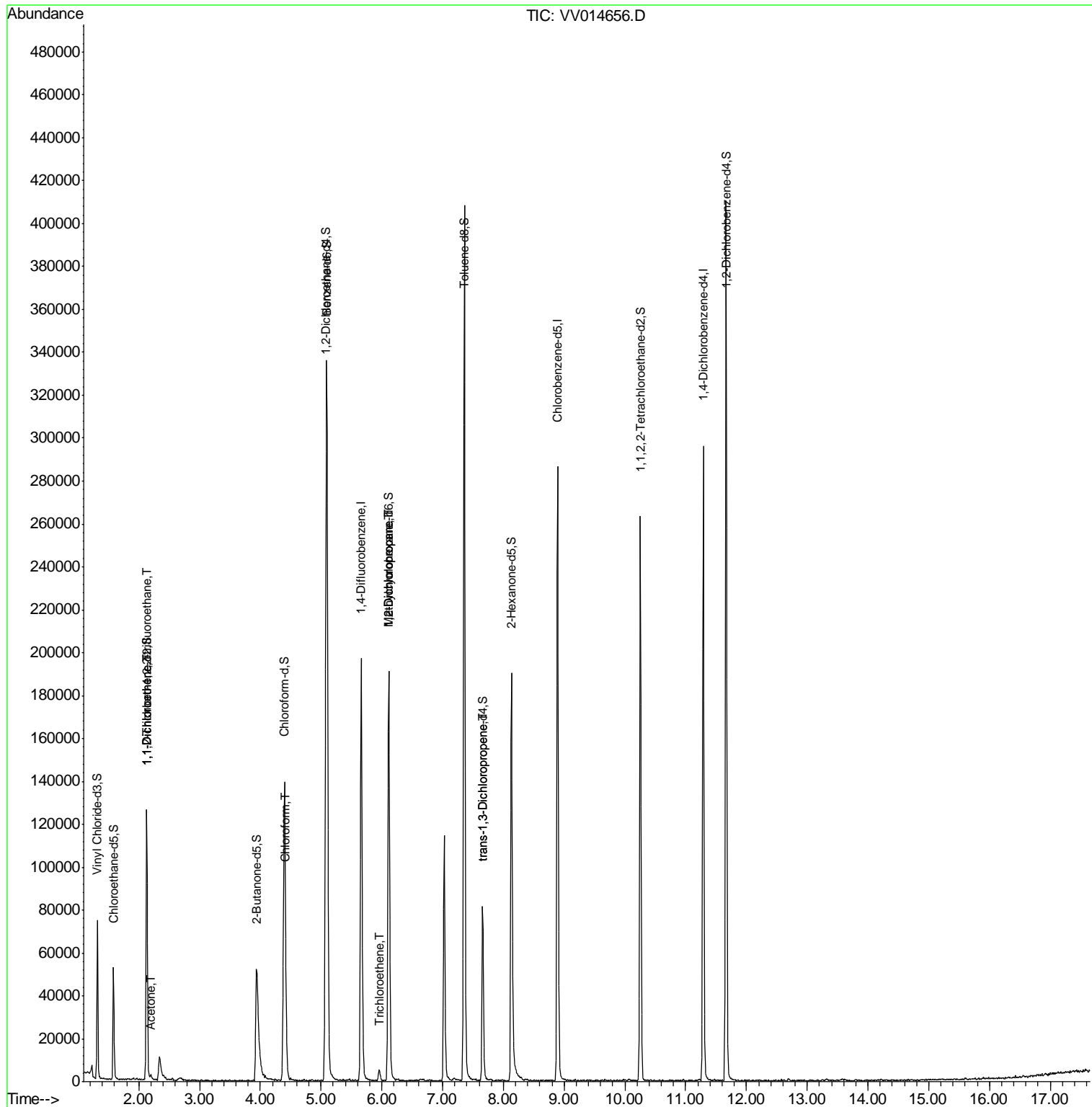
						Qvalue
10) 1,1,2-Trichloro-1,2,2-trif	2.13	101	695	1.197	ug/L #	17
12) 1,1-Dichloroethene	2.14	96	582	1.114	ug/L #	1
13) Acetone	2.21	43	2379	4.305	ug/L	58
25) Chloroform	4.42	83	5961	2.805	ug/L	93
34) Trichloroethene	5.96	95	908	0.757	ug/L #	81
35) Methylcyclohexane	6.11	83	23892	13.951	ug/L #	21
37) 1,2-Dichloropropane	6.11	63	9955	9.875	ug/L #	86
44) trans-1,3-Dichloropropene	7.66	75	2186	1.338	ug/L #	81

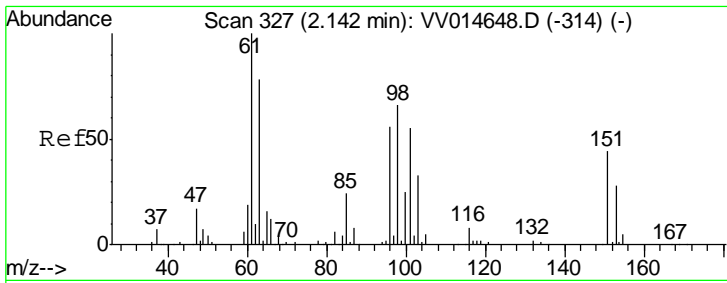
(#) = qualifier out of range (m) = manual integration (+) = signals summed

Data File : VV014656.D  
Acq On : 21 Feb 2020 16:29  
Operator : SY/MD  
Sample : L1608-04  
Misc : 5.0mL/MSVOA\_V/WATER  
ALS Vial : 15 Sample Multiplier: 1

Instrument :  
MSVOA\_V  
Client Sampled :  
C0AQ8

Quant Time: Feb 21 23:40:17 2020  
Quant Method : Z:\VOASRV\HPCHEM1\MSVOA\_V\METHOD\SOMVLM022120WMA.M  
Quant Title : VOC Analysis  
QLast Update : Fri Feb 21 23:36:05 2020  
Response via : Initial Calibration





#10

1,1,2-Trichloro-1,2,2-trifluoroethane

Concen: 1.197 ug/L

RT: 2.13 min Scan# 324

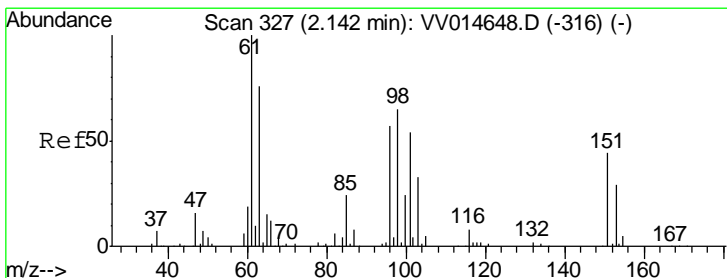
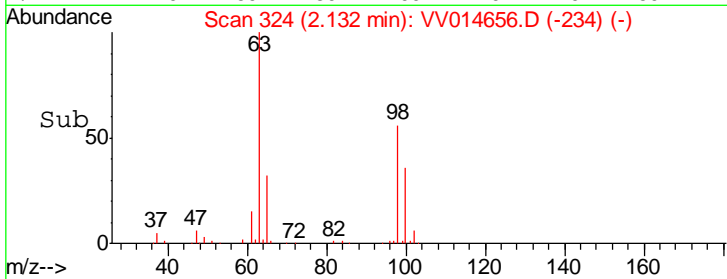
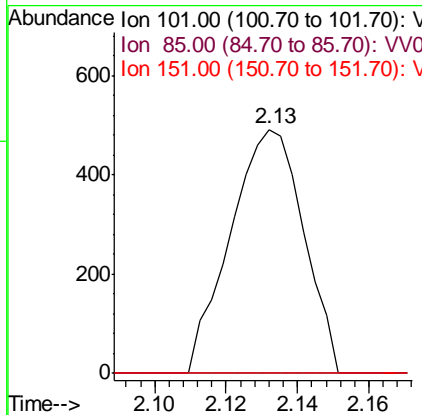
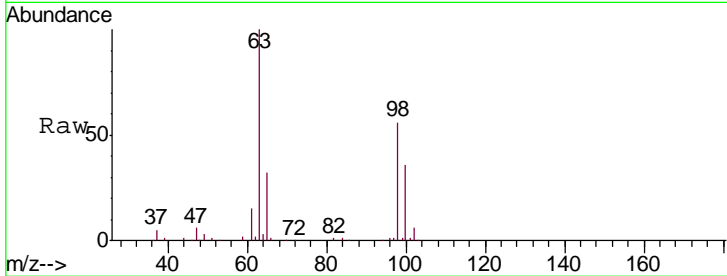
Delta R.T. -0.01 min

Lab File: VV014656.D

Acq: 21 Feb 2020 16:29

Instrument : MSVOA\_V  
ClientSampled : C0AQ8

Tgt Ion	Resp	Lower	Upper
101	695		
101	100		
85	0.0	37.3	55.9#
151	0.0	64.6	96.8#



#12

1,1-Dichloroethene

Concen: 1.114 ug/L

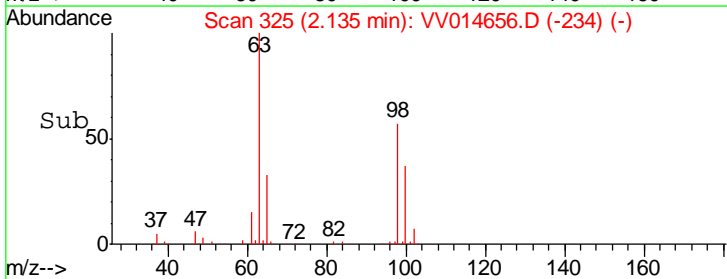
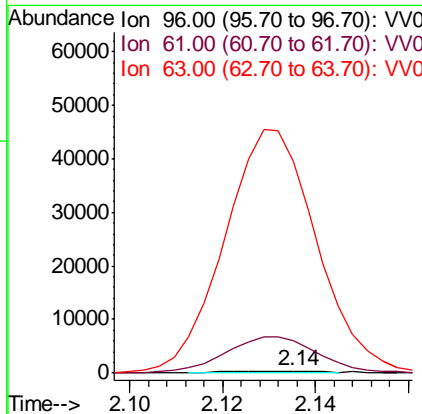
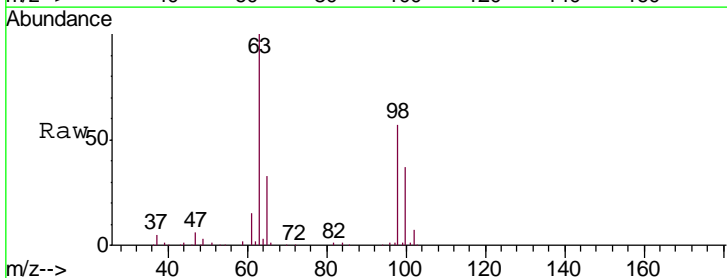
RT: 2.14 min Scan# 325

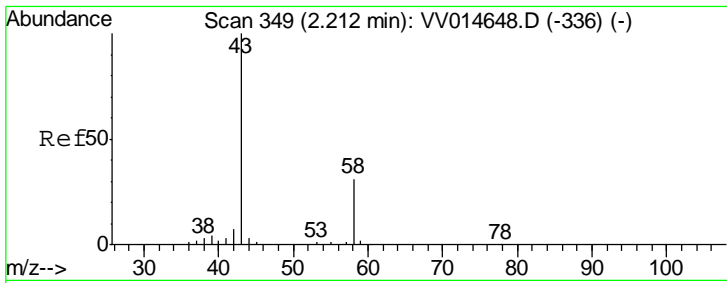
Delta R.T. -0.01 min

Lab File: VV014656.D

Acq: 21 Feb 2020 16:29

Tgt Ion	Resp	Lower	Upper
96	582		
96	100		
61	1387.5	124.5	231.1#
63	9138.1	98.1	182.1#

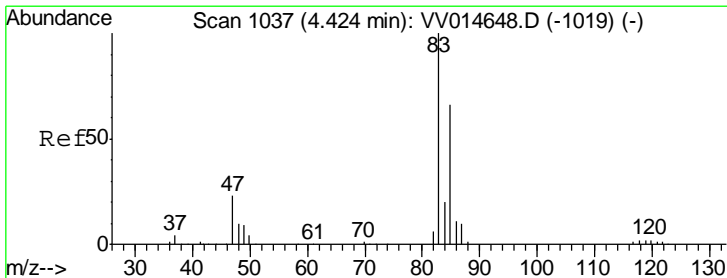
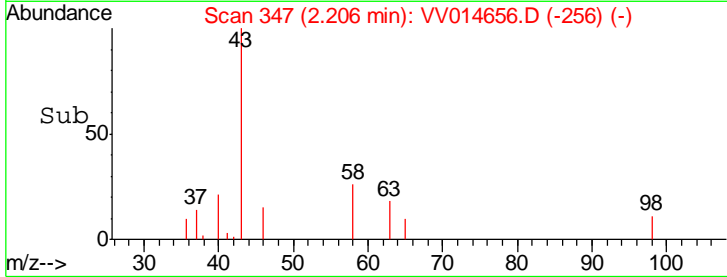
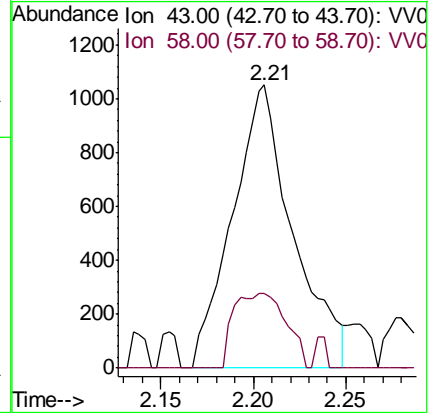
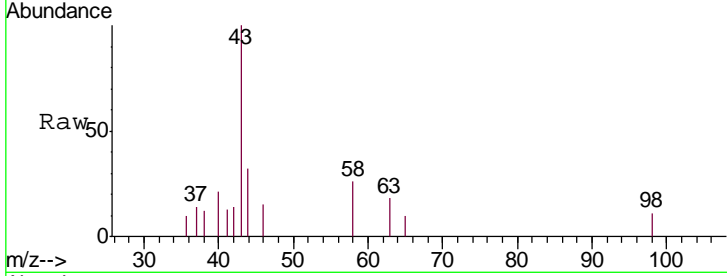




#13  
 Acetone  
 Concen: 4.305 ug/L  
 RT: 2.21 min Scan# 347  
 Delta R.T. -0.01 min  
 Lab File: VV014656.D  
 Acq: 21 Feb 2020 16:29

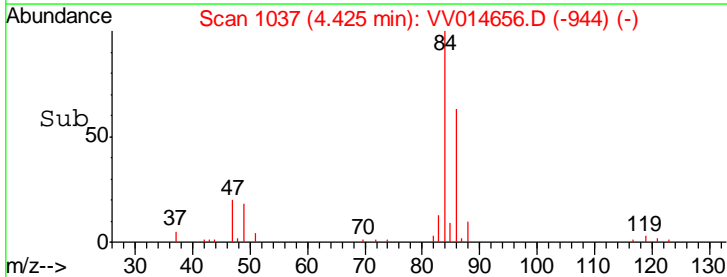
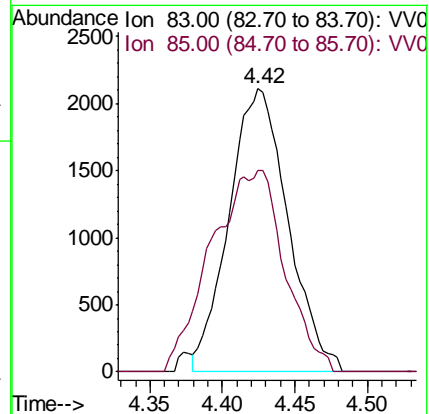
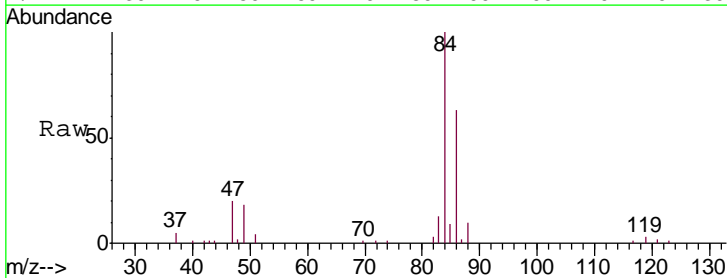
Instrument :  
 MSVOA\_V  
 ClientSampled :  
 C0AQ8

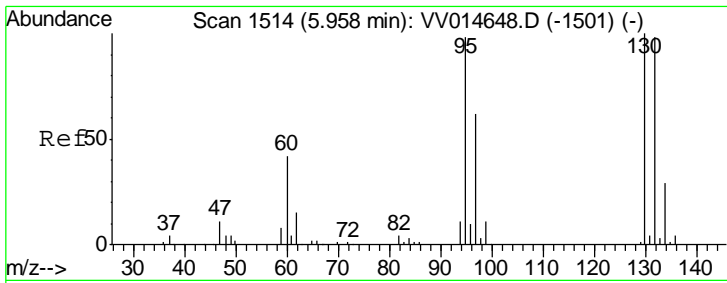
Tgt Ion: 43 Resp: 2379  
 Ion Ratio Lower Upper  
 43 100  
 58 9.5 0.0 66.8



#25  
 Chloroform  
 Concen: 2.805 ug/L  
 RT: 4.42 min Scan# 1037  
 Delta R.T. 0.00 min  
 Lab File: VV014656.D  
 Acq: 21 Feb 2020 16:29

Tgt Ion: 83 Resp: 5961  
 Ion Ratio Lower Upper  
 83 100  
 85 71.1 46.1 85.7

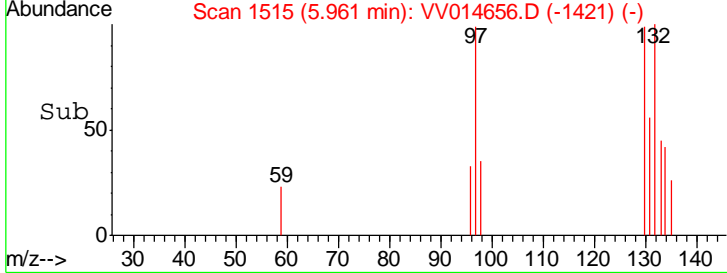
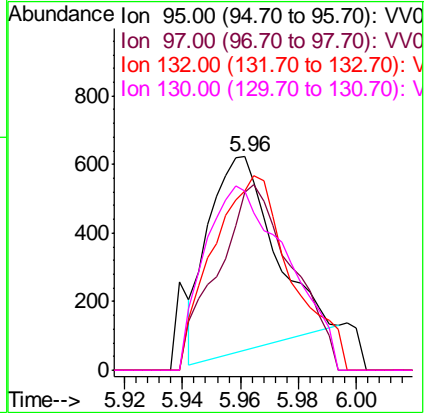
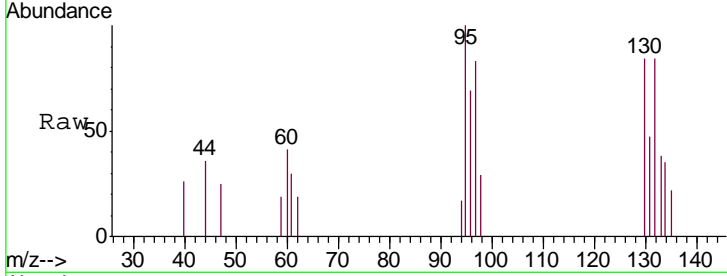




#34  
 Trichloroethene  
 Concen: 0.757 ug/L  
 RT: 5.96 min Scan# 1515  
 Delta R.T. 0.00 min  
 Lab File: VV014656.D  
 Acq: 21 Feb 2020 16:29

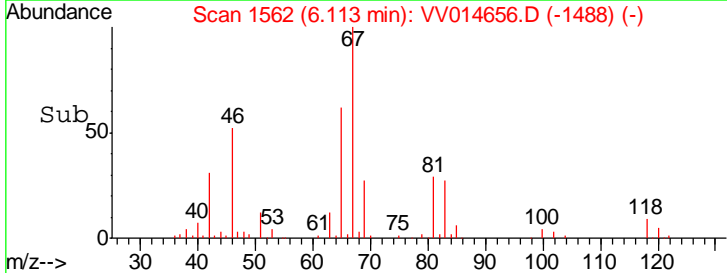
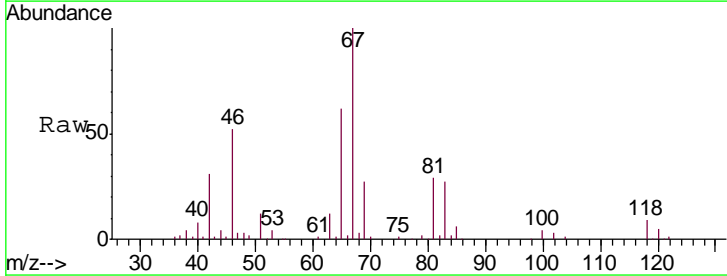
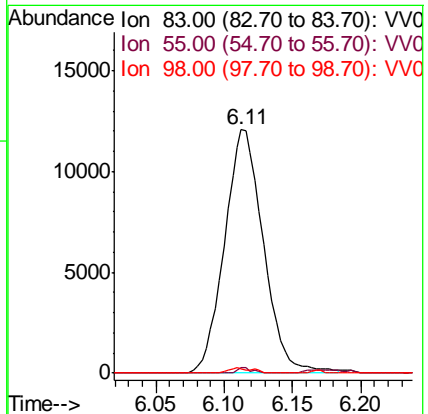
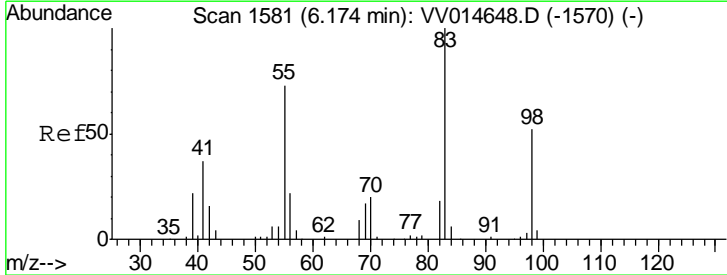
Instrument : MSVOA\_V  
 ClientSampled : C0AQ8

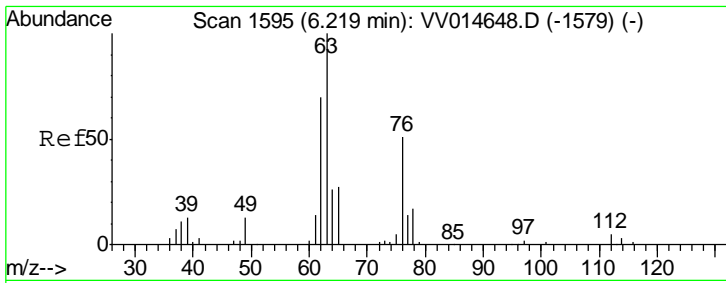
Tgt Ion	Resp	Lower	Upper
95	100		
97	83.3	44.3	82.3#
132	84.1	69.7	129.4
130	83.6	71.3	132.5



#35  
 Methylcyclohexane  
 Concen: 13.951 ug/L  
 RT: 6.11 min Scan# 1562  
 Delta R.T. -0.06 min  
 Lab File: VV014656.D  
 Acq: 21 Feb 2020 16:29

Tgt Ion	Resp	Lower	Upper
83	100		
55	0.6	56.1	84.1#
98	0.9	40.4	60.6#

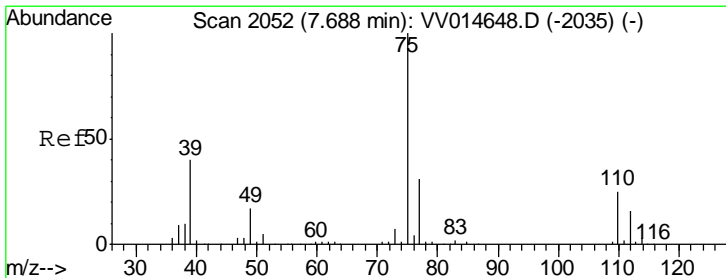
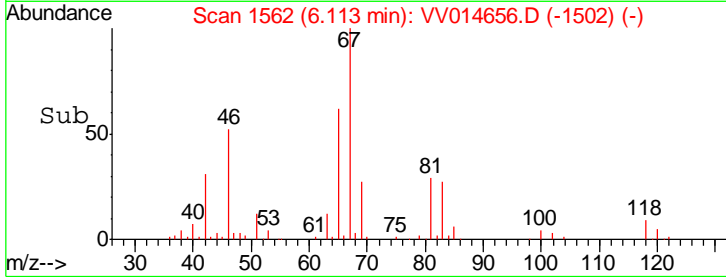
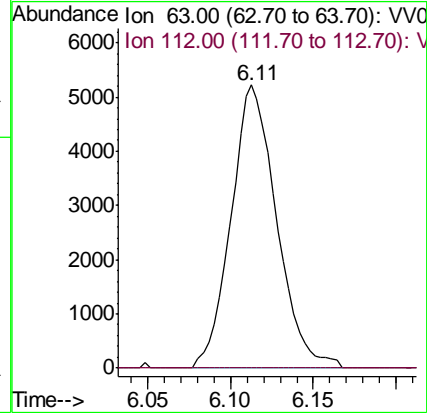
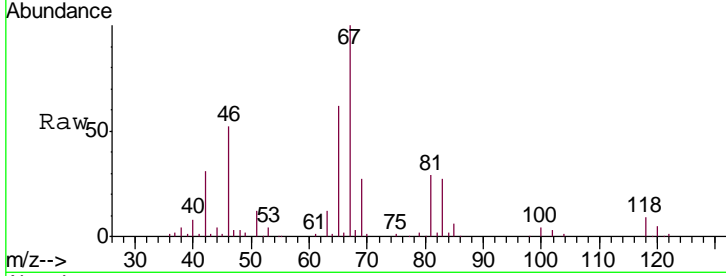




#37  
 1,2-Dichloropropane  
 Concen: 9.875 ug/L  
 RT: 6.11 min Scan# 1562  
 Delta R.T. -0.11 min  
 Lab File: VV014656.D  
 Acq: 21 Feb 2020 16:29

Instrument :  
 MSVOA\_V  
 ClientSampled :  
 C0AQ8

Tgt Ion: 63 Resp: 9955  
 Ion Ratio Lower Upper  
 63 100  
 112 0.0 3.8 5.6#



#44  
 trans-1,3-Dichloropropene  
 Concen: 1.338 ug/L  
 RT: 7.66 min Scan# 2043  
 Delta R.T. -0.03 min  
 Lab File: VV014656.D  
 Acq: 21 Feb 2020 16:29

Tgt Ion: 75 Resp: 2186  
 Ion Ratio Lower Upper  
 75 100  
 77 42.0 21.9 40.7#

