

Data Path : Z:\VOASRV\HPCHEM1\MSVOA V\DATA\VV022420\  
 Data File : VV014691.D  
 Acq On : 24 Feb 2020 11:26  
 Operator : SY/MD  
 Sample : VV0224WBL01  
 Misc : 5.0mL/MSVOA V/WATER  
 ALS Vial : 3 Sample Multiplier: 1

Instrument :  
 MSVOA\_V  
 ClientSampleId :  
 VBLK76

Quant Time: Feb 25 06:39:27 2020  
 Quant Method : Z:\VOASRV\HPCHEM1\MSVOA\_V\METHOD\SOMVLM022120WMA.M  
 Quant Title : VOC Analysis  
 QLast Update : Tue Feb 25 06:37:27 2020  
 Response via : Initial Calibration

Internal Standards	R.T.	QIon	Response	Conc	Units	Dev(Min)
1) 1,4-Difluorobenzene	5.66	114	213364	50.00	ug/L	0.00
28) Chlorobenzene-d5	8.89	117	199271	50.00	ug/L	0.00
60) 1,4-Dichlorobenzene-d4	11.29	152	95935	50.00	ug/L	0.00

## System Monitoring Compounds

4) Vinyl Chloride-d3	1.32	65	29917	35.90	ug/L	0.00
Spiked Amount	50.000	Range	60 - 135	Recovery	=	71.80%
7) Chloroethane-d5	1.59	69	25737	42.61	ug/L	0.00
Spiked Amount	50.000	Range	70 - 130	Recovery	=	85.22%
11) 1,1-Dichloroethene-d2	2.13	63	52477	33.79	ug/L	0.00
Spiked Amount	50.000	Range	60 - 125	Recovery	=	67.58%
21) 2-Butanone-d5	3.95	46	70556	91.09	ug/L	0.00
Spiked Amount	100.000	Range	40 - 130	Recovery	=	91.09%
24) Chloroform-d	4.40	84	123243	45.17	ug/L	0.00
Spiked Amount	50.000	Range	70 - 125	Recovery	=	90.34%
26) 1,2-Dichloroethane-d4	5.08	65	86917	49.83	ug/L	0.00
Spiked Amount	50.000	Range	70 - 125	Recovery	=	99.66%
32) Benzene-d6	5.09	84	242547	45.99	ug/L	0.00
Spiked Amount	50.000	Range	70 - 125	Recovery	=	91.98%
36) 1,2-Dichloropropane-d6	6.11	67	71080	46.22	ug/L	0.00
Spiked Amount	50.000	Range	70 - 120	Recovery	=	92.44%
41) Toluene-d8	7.35	98	229434	45.16	ug/L	0.00
Spiked Amount	50.000	Range	80 - 120	Recovery	=	90.32%
43) trans-1,3-Dichloropropene-	7.66	79	40585	47.11	ug/L	0.00
Spiked Amount	50.000	Range	60 - 125	Recovery	=	94.22%
47) 2-Hexanone-d5	8.13	63	55186	89.53	ug/L	0.00
Spiked Amount	100.000	Range	45 - 130	Recovery	=	89.53%
57) 1,1,2,2-Tetrachloroethane-	10.25	84	102108	47.92	ug/L	0.00
Spiked Amount	50.000	Range	65 - 120	Recovery	=	95.84%
64) 1,2-Dichlorobenzene-d4	11.67	152	93300	49.71	ug/L	0.00
Spiked Amount	50.000	Range	80 - 120	Recovery	=	99.42%

## Target Compounds

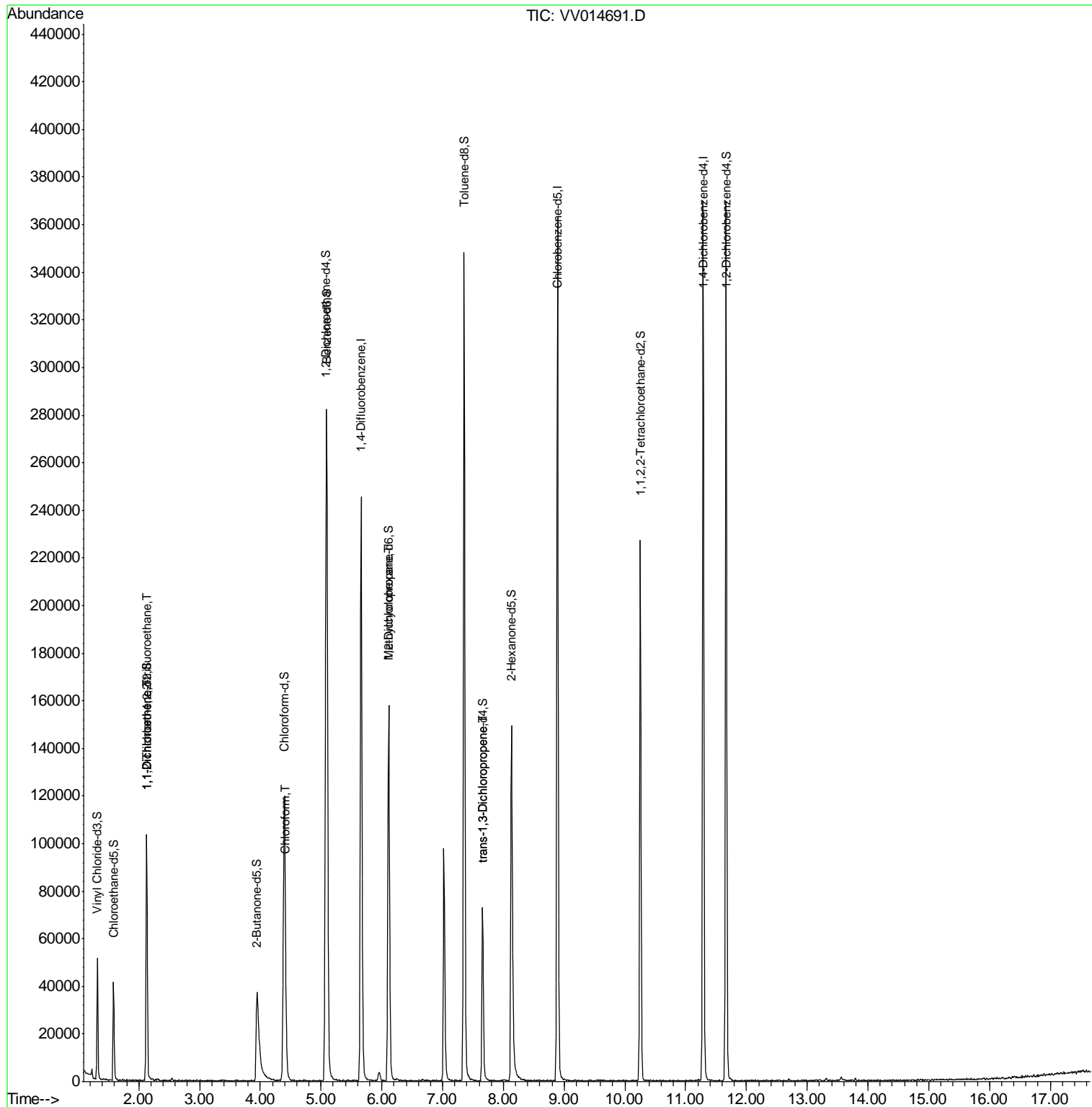
Target Compounds	R.T.	QIon	Response	Conc	Units	Ovalue
10) 1,1,2-Trichloro-1,2,2-trif	2.13	101	546	0.756	ug/L #	17
12) 1,1-Dichloroethene	2.14	96	569	0.875	ug/L #	1
25) Chloroform	4.42	83	6542	2.474	ug/L	99
35) Methylcyclohexane	6.11	83	19600	9.179	ug/L #	21
44) trans-1,3-Dichloropropene	7.66	75	1992	0.978	ug/L #	78

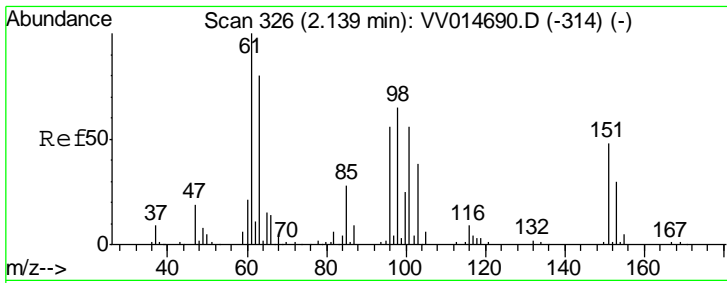
(#) = qualifier out of range (m) = manual integration (+) = signals summed

Data Path : Z:\VOASRV\HPCHEM1\MSVOA V\DATA\VV022420\  
 Data File : VV014691.D  
 Acq On : 24 Feb 2020 11:26  
 Operator : SY/MD  
 Sample : VV0224WBL01  
 Misc : 5.0mL/MSVOA V/WATER  
 ALS Vial : 3 Sample Multiplier: 1

Instrument :  
 MSVOA\_V  
 ClientSampled :  
 VBLK76

Quant Time: Feb 25 06:39:27 2020  
 Quant Method : Z:\VOASRV\HPCHEM1\MSVOA\_V\METHOD\SOMVLM022120WMA.M  
 Quant Title : VOC Analysis  
 QLast Update : Tue Feb 25 06:37:27 2020  
 Response via : Initial Calibration





#10

1,1,2-Trichloro-1,2,2-trifluoroethane

Concen: 0.756 ug/L

RT: 2.13 min Scan# 323

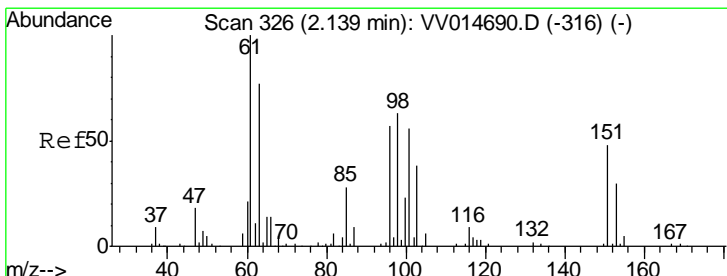
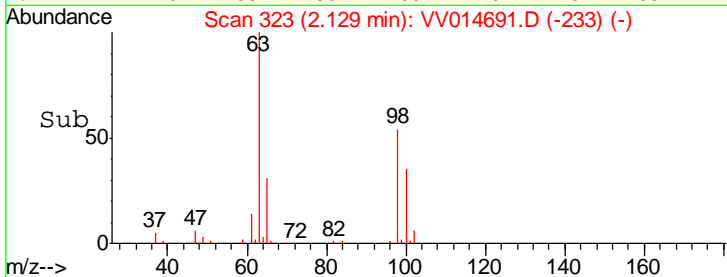
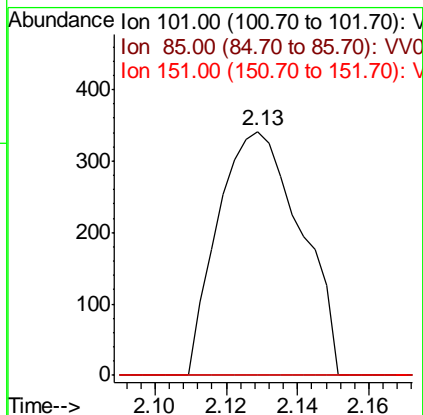
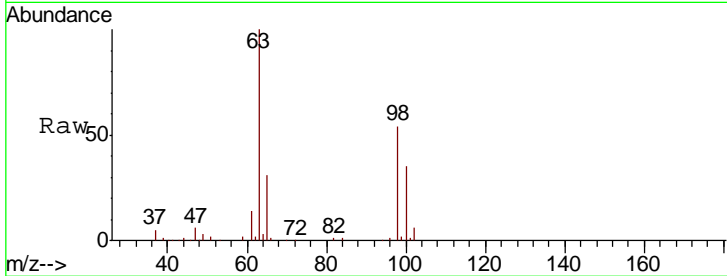
Delta R.T. -0.01 min

Lab File: VV014691.D

Acq: 24 Feb 2020 11:26

Instrument :  
MSVOA\_V  
ClientSampled :  
VBLK76

Tgt Ion	Ratio	Lower	Upper
101	100		
85	0.0	37.3	55.9#
151	0.0	64.6	96.8#



#12

1,1-Dichloroethene

Concen: 0.875 ug/L

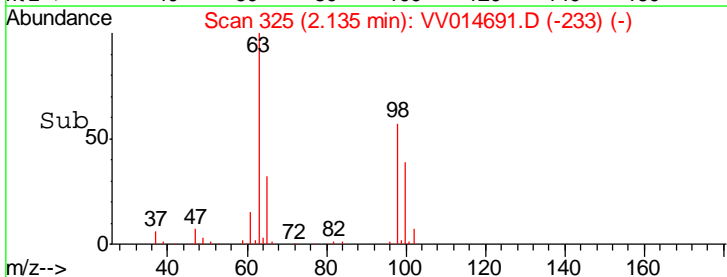
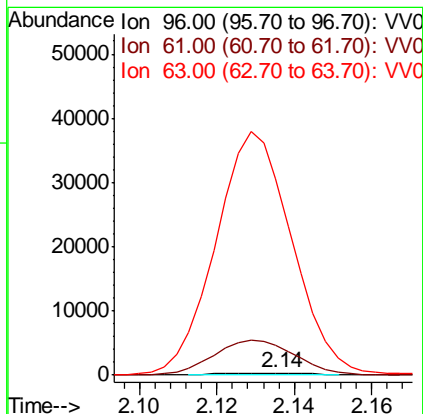
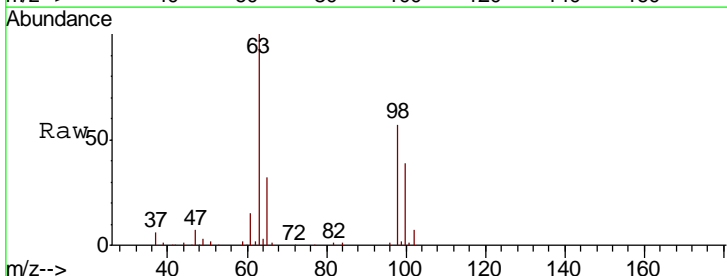
RT: 2.14 min Scan# 325

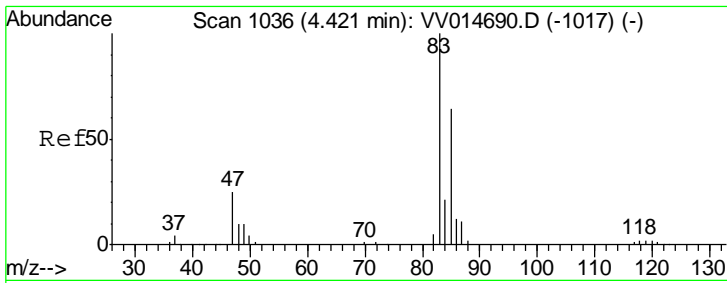
Delta R.T. -0.00 min

Lab File: VV014691.D

Acq: 24 Feb 2020 11:26

Tgt Ion	Ratio	Lower	Upper
96	100		
61	1287.4	124.5	231.1#
63	8593.3	98.1	182.1#

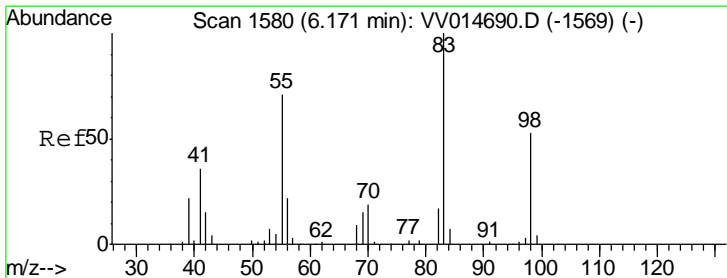
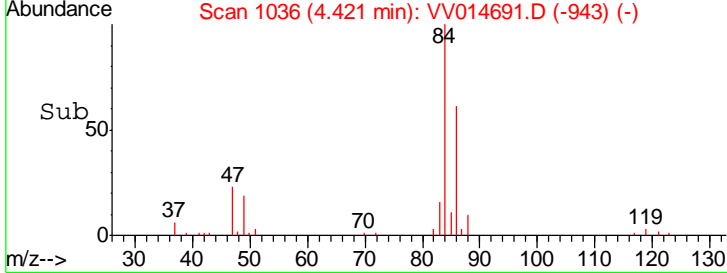
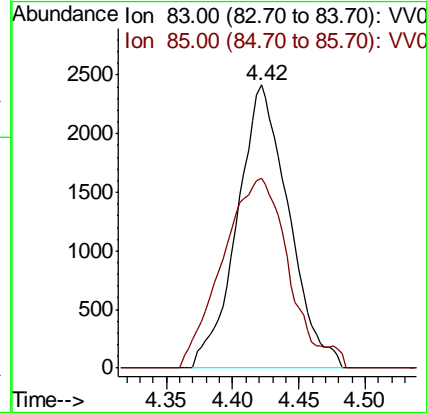
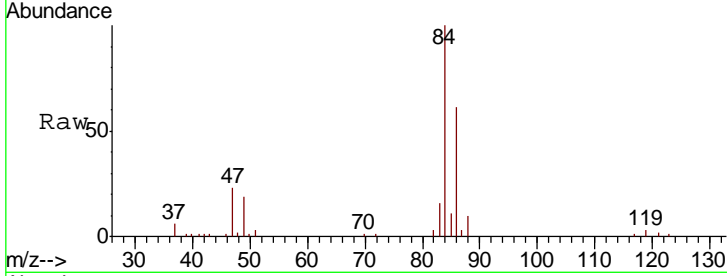




#25  
 Chloroform  
 Concen: 2.474 ug/L  
 RT: 4.42 min Scan# 1036  
 Delta R.T. -0.00 min  
 Lab File: VV014691.D  
 Acq: 24 Feb 2020 11:26

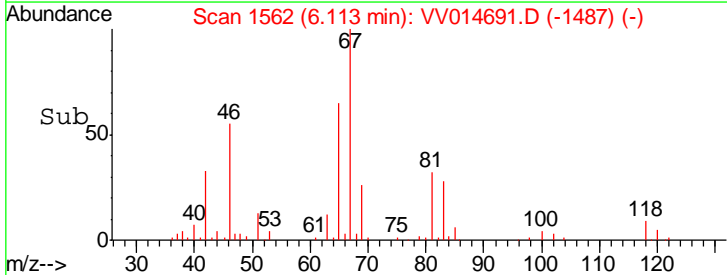
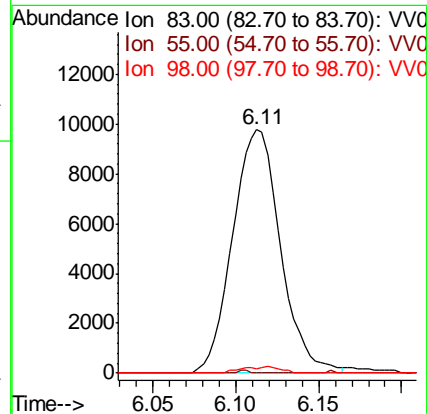
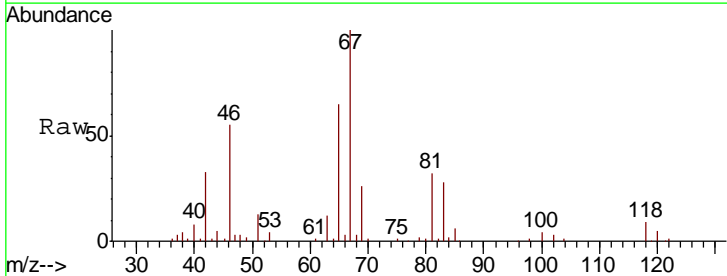
Instrument :  
 MSVOA\_V  
 ClientSampled :  
 VBLK76

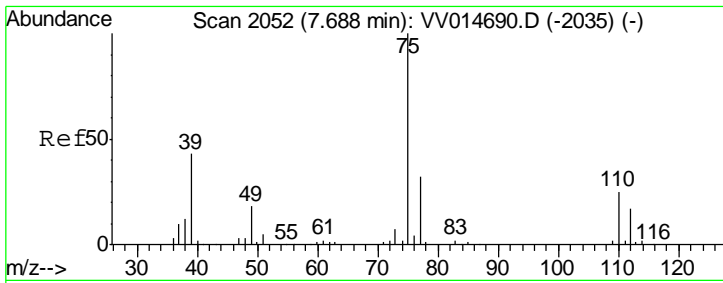
Tgt Ion	Resp	Lower	Upper
83	100		
85	67.0	46.1	85.7



#35  
 Methylcyclohexane  
 Concen: 9.179 ug/L  
 RT: 6.11 min Scan# 1562  
 Delta R.T. -0.06 min  
 Lab File: VV014691.D  
 Acq: 24 Feb 2020 11:26

Tgt Ion	Resp	Lower	Upper
83	100		
55	0.0	56.1	84.1#
98	1.1	40.4	60.6#





#44  
 trans-1,3-Dichloropropene  
 Concen: 0.978 ug/L  
 RT: 7.66 min Scan# 2042  
 Delta R.T. -0.03 min  
 Lab File: VV014691.D  
 Acq: 24 Feb 2020 11:26

Instrument : MSVOA\_V  
 ClientSampleId : VBLK76

Tot Ion: 75 Resp: 1992  
 Ion Ratio Lower Upper  
 75 100  
 77 43.6 21.9 40.7#

