

Data Path : Z:\VOASRV\HPCHEM1\MSVOA V\DATA\VV022420\
 Data File : VV014699.D
 Acq On : 24 Feb 2020 15:06
 Operator : SY/MD
 Sample : L1608-09
 Misc : 5.0mL/MSVOA V/WATER
 ALS Vial : 11 Sample Multiplier: 1

Instrument :
 MSVOA_V
 ClientSampleId :
 COAR3

Quant Time: Feb 25 06:40:23 2020
 Quant Method : Z:\VOASRV\HPCHEM1\MSVOA_V\METHOD\SOMVLM022120WMA.M
 Quant Title : VOC Analysis
 QLast Update : Tue Feb 25 06:37:27 2020
 Response via : Initial Calibration

Internal Standards	R.T.	QIon	Response	Conc	Units	Dev(Min)
1) 1,4-Difluorobenzene	5.66	114	158122	50.00	ug/L	0.00
28) Chlorobenzene-d5	8.89	117	151793	50.00	ug/L	0.00
60) 1,4-Dichlorobenzene-d4	11.29	152	72447	50.00	ug/L	0.00

System Monitoring Compounds

4) Vinyl Chloride-d3	1.32	65	27255	44.13	ug/L	0.00
Spiked Amount	50.000	Range	60 - 135	Recovery	=	88.26%
7) Chloroethane-d5	1.59	69	25224	56.36	ug/L	0.00
Spiked Amount	50.000	Range	70 - 130	Recovery	=	112.72%
11) 1,1-Dichloroethene-d2	2.13	63	47438	41.21	ug/L	0.00
Spiked Amount	50.000	Range	60 - 125	Recovery	=	82.42%
21) 2-Butanone-d5	3.95	46	71109	123.88	ug/L	0.00
Spiked Amount	100.000	Range	40 - 130	Recovery	=	123.88%
24) Chloroform-d	4.40	84	123193	60.93	ug/L	0.00
Spiked Amount	50.000	Range	70 - 125	Recovery	=	121.86%
26) 1,2-Dichloroethane-d4	5.08	65	86010	66.54	ug/L	0.00
Spiked Amount	50.000	Range	70 - 125	Recovery	=	133.08%#
32) Benzene-d6	5.10	84	234375	58.34	ug/L	0.00
Spiked Amount	50.000	Range	70 - 125	Recovery	=	116.68%
36) 1,2-Dichloropropane-d6	6.12	67	70209	59.93	ug/L	0.00
Spiked Amount	50.000	Range	70 - 120	Recovery	=	119.86%
41) Toluene-d8	7.36	98	220391	56.95	ug/L	0.00
Spiked Amount	50.000	Range	80 - 120	Recovery	=	113.90%
43) trans-1,3-Dichloropropene-	7.66	79	38658	58.91	ug/L	0.00
Spiked Amount	50.000	Range	60 - 125	Recovery	=	117.82%
47) 2-Hexanone-d5	8.13	63	57598	122.67	ug/L	0.00
Spiked Amount	100.000	Range	45 - 130	Recovery	=	122.67%
57) 1,1,2,2-Tetrachloroethane-	10.25	84	104017	64.08	ug/L	0.00
Spiked Amount	50.000	Range	65 - 120	Recovery	=	128.16%#
64) 1,2-Dichlorobenzene-d4	11.67	152	90897	64.13	ug/L	0.00
Spiked Amount	50.000	Range	80 - 120	Recovery	=	128.26%#

Target Compounds

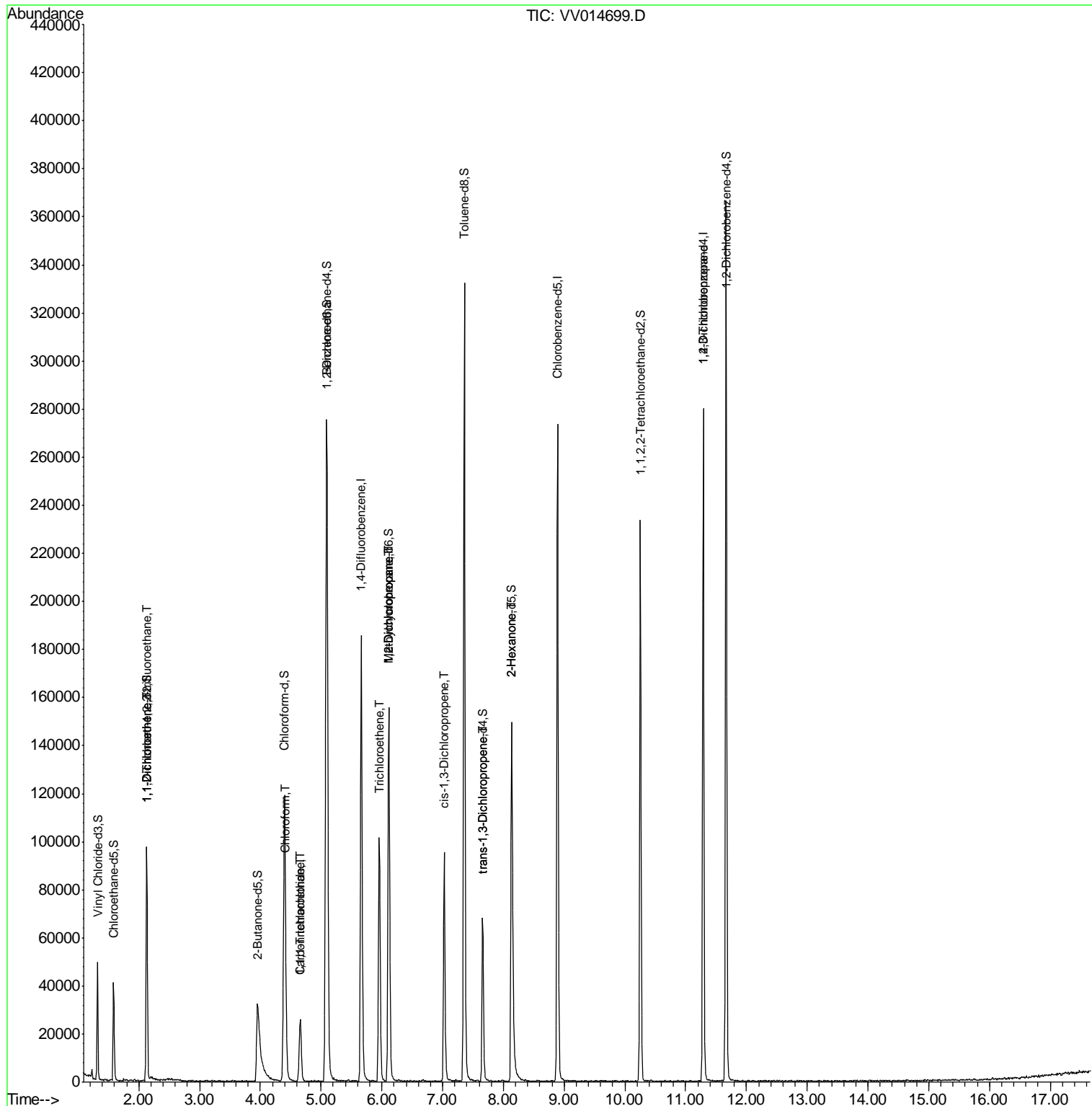
Target Compounds	R.T.	QIon	Response	Conc	Units	Ovalue
10) 1,1,2-Trichloro-1,2,2-trif	2.13	101	498	0.930	ug/L #	17
12) 1,1-Dichloroethene	2.14	96	599	1.243	ug/L #	1
25) Chloroform	4.42	83	3837	1.958	ug/L	88
30) 1,1,1-Trichloroethane	4.66	97	20551	11.642	ug/L	97
31) Carbon tetrachloride	4.66	117	2798	1.791	ug/L	90
34) Trichloroethene	5.96	95	34662	30.417	ug/L	97
35) Methylcyclohexane	6.11	83	19558	12.024	ug/L #	21
37) 1,2-Dichloropropane	6.11	63	8491	8.868	ug/L #	86
39) cis-1,3-Dichloropropene	7.03	75	2830	1.655	ug/L #	80
44) trans-1,3-Dichloropropene	7.66	75	2039	1.314	ug/L	96
48) 2-Hexanone	8.14	43	8329	8.953	ug/L #	73
59) 1,2,3-Trichloropropane	11.29	75	7810	6.029	ug/L #	81

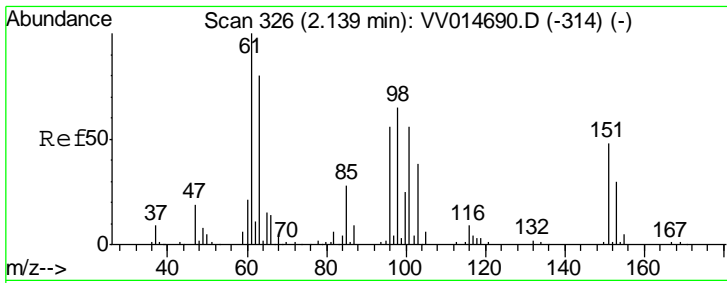
(#) = qualifier out of range (m) = manual integration (+) = signals summed

Data Path : Z:\VOASRV\HPCHEM1\MSVOA V\DATA\VV022420\
 Data File : VV014699.D
 Acq On : 24 Feb 2020 15:06
 Operator : SY/MD
 Sample : L1608-09
 Misc : 5.0mL/MSVOA V/WATER
 ALS Vial : 11 Sample Multiplier: 1

Instrument :
 MSVOA_V
 ClientSampled :
 COAR3

Quant Time: Feb 25 06:40:23 2020
 Quant Method : Z:\VOASRV\HPCHEM1\MSVOA_V\METHOD\SOMVLM022120WMA.M
 Quant Title : VOC Analysis
 QLast Update : Tue Feb 25 06:37:27 2020
 Response via : Initial Calibration





#10

1,1,2-Trichloro-1,2,2-trifluoroethane

Concen: 0.930 ug/L

RT: 2.13 min Scan# 323

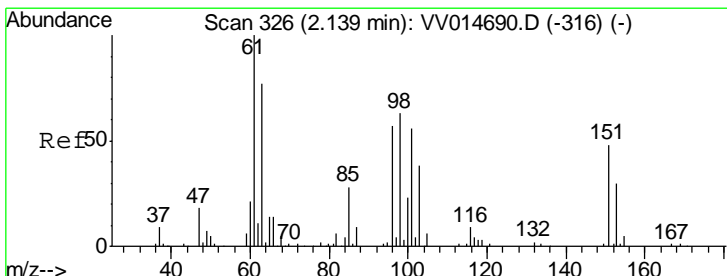
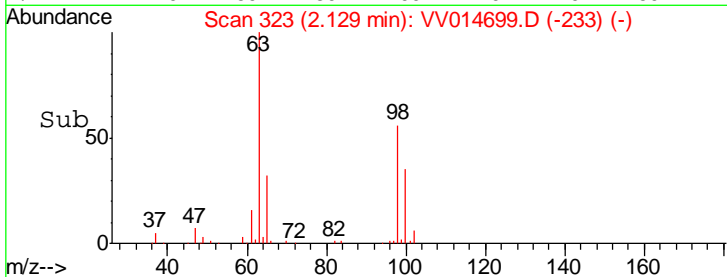
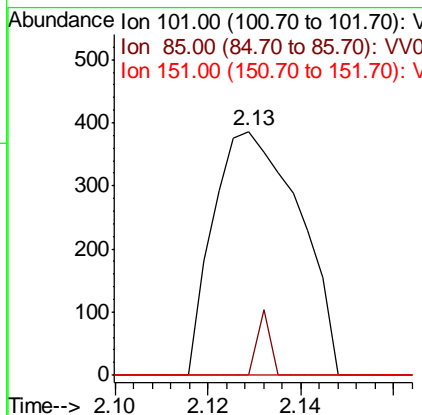
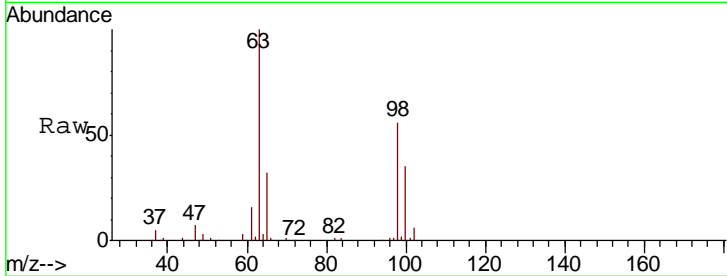
Delta R.T. -0.01 min

Lab File: VV014699.D

Acq: 24 Feb 2020 15:06

Instrument :
MSVOA_V
ClientSampled :
COAR3

Tgt Ion	Resp	Lower	Upper
101	498		
101	100		
85	0.0	37.3	55.9#
151	0.0	64.6	96.8#



#12

1,1-Dichloroethene

Concen: 1.243 ug/L

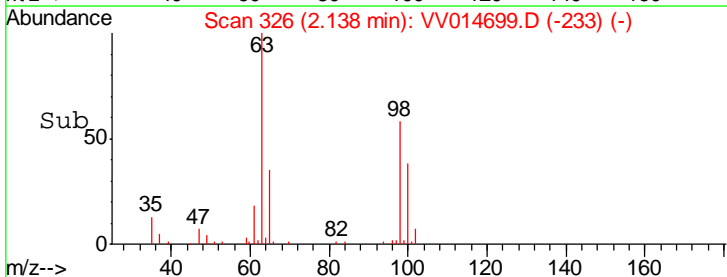
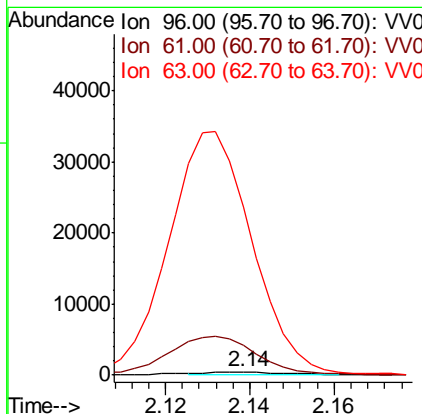
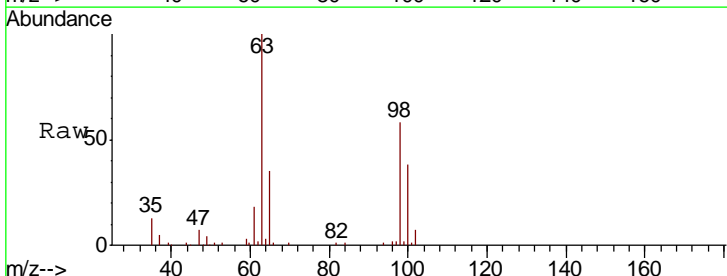
RT: 2.14 min Scan# 326

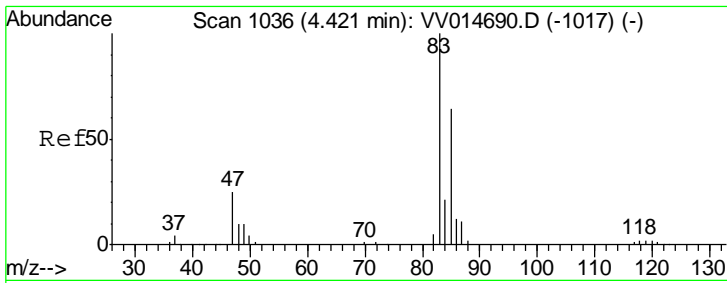
Delta R.T. -0.00 min

Lab File: VV014699.D

Acq: 24 Feb 2020 15:06

Tgt Ion	Resp	Lower	Upper
96	599		
96	100		
61	855.7	124.5	231.1#
63	4889.4	98.1	182.1#

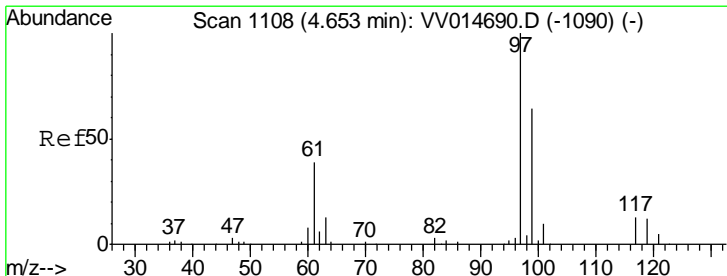
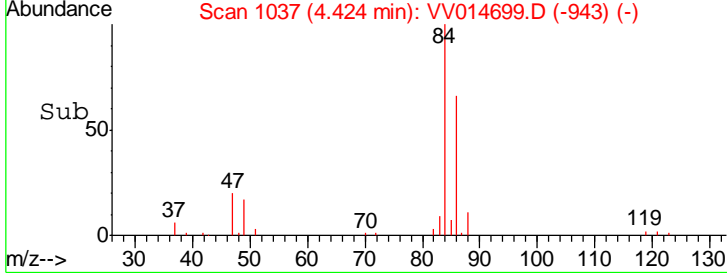
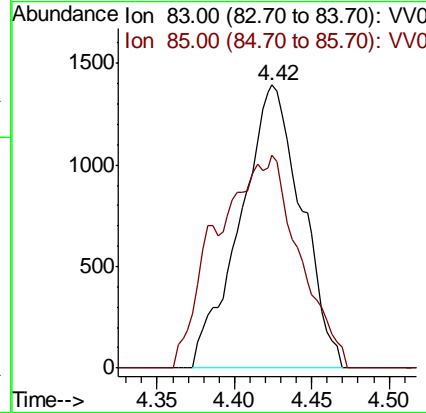
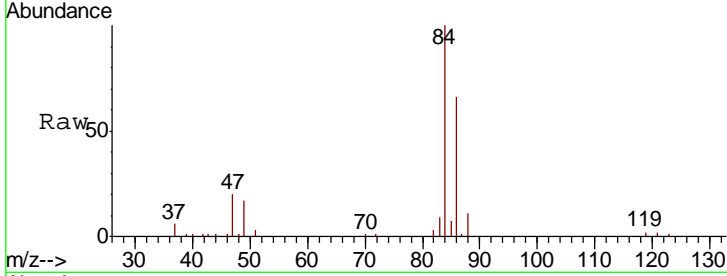




#25
 Chloroform
 Concen: 1.958 ug/L
 RT: 4.42 min Scan# 1037
 Delta R.T. 0.00 min
 Lab File: VV014699.D
 Acq: 24 Feb 2020 15:06

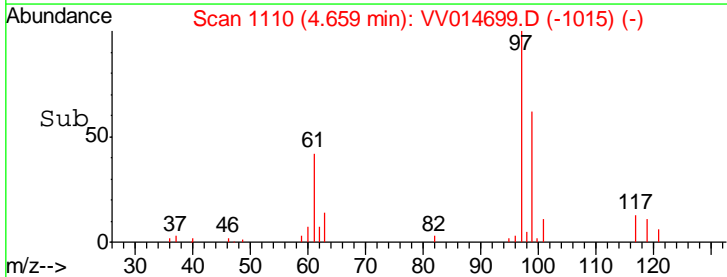
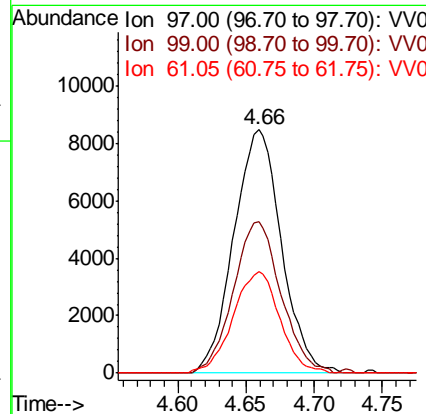
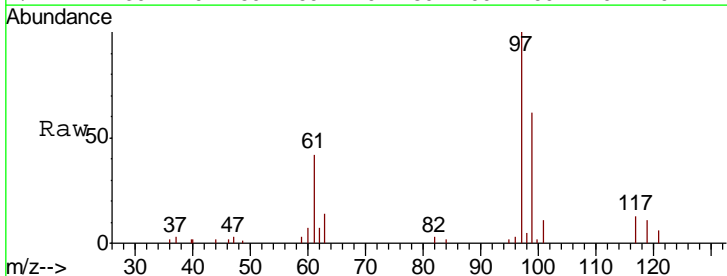
Instrument : MSVOA_V
 ClientSampled : COAR3

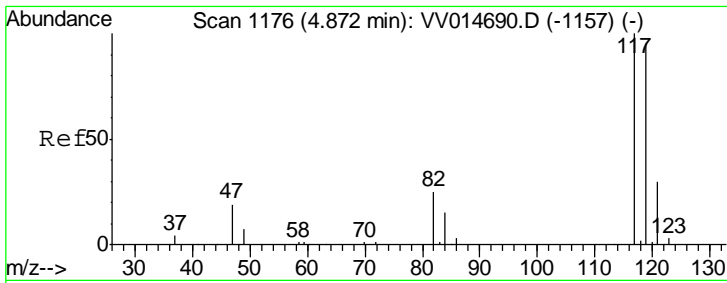
Tgt Ion	Resp	Lower	Upper
83	3837		
83	100		
85	75.1	46.1	85.7



#30
 1,1,1-Trichloroethane
 Concen: 11.642 ug/L
 RT: 4.66 min Scan# 1110
 Delta R.T. 0.01 min
 Lab File: VV014699.D
 Acq: 24 Feb 2020 15:06

Tgt Ion	Resp	Lower	Upper
97	20551		
97	100		
99	62.1	52.0	78.0
61	40.9	31.4	47.0

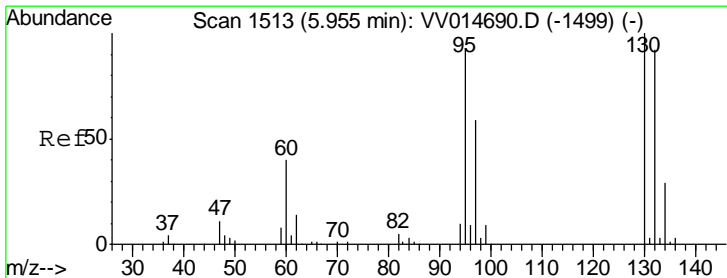
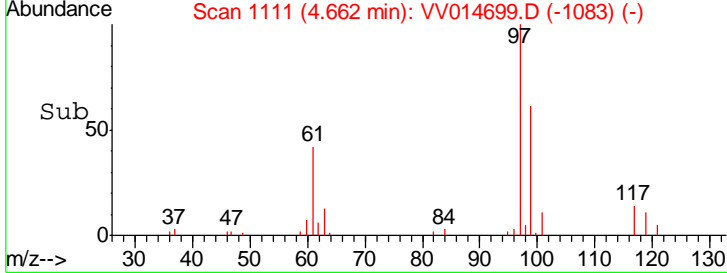
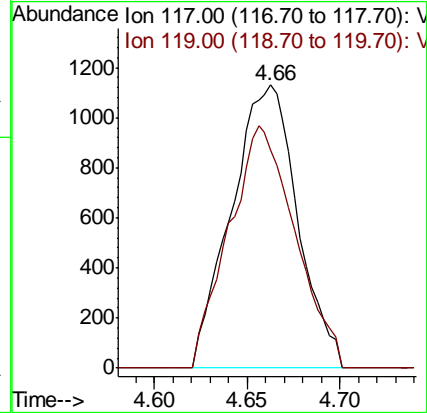
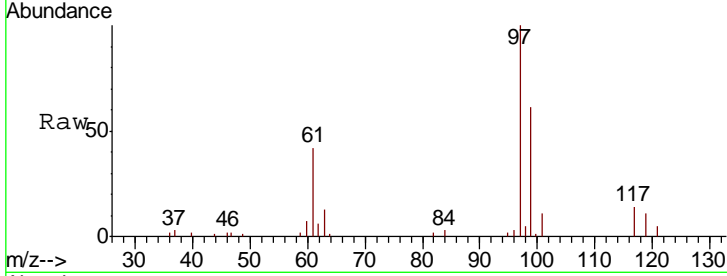




#31
 Carbon tetrachloride
 Concen: 1.791 ug/L
 RT: 4.66 min Scan# 1111
 Delta R.T. -0.21 min
 Lab File: VV014699.D
 Acq: 24 Feb 2020 15:06

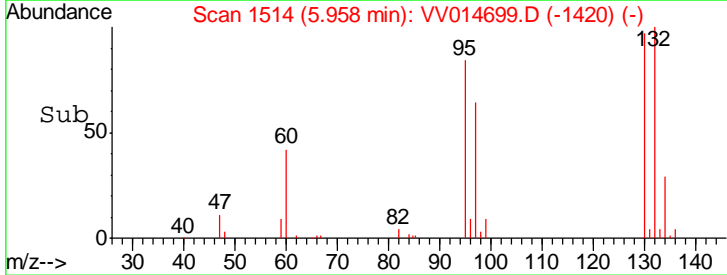
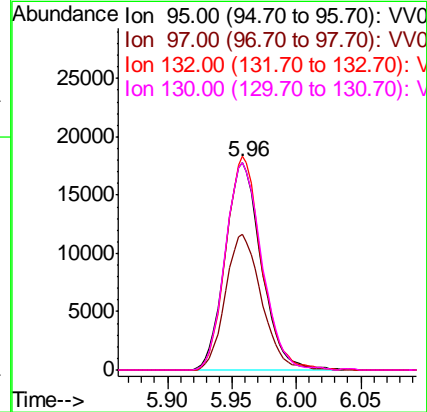
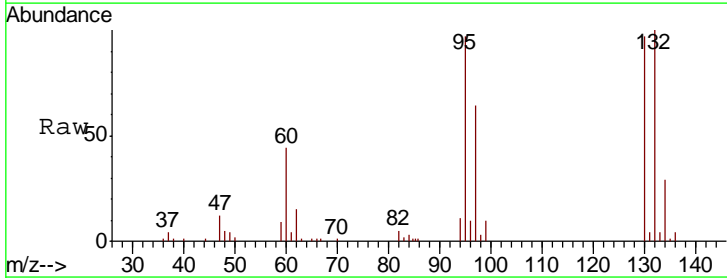
Instrument :
 MSVOA_V
 ClientSampled :
 COAR3

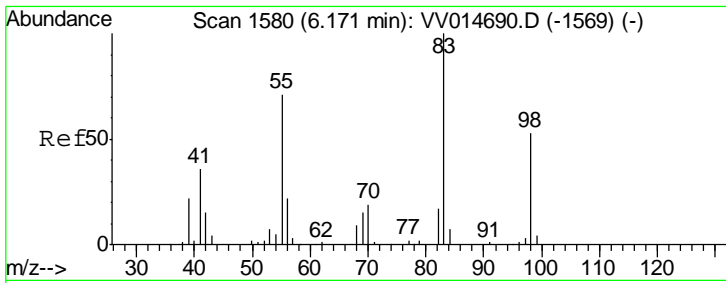
Tgt Ion: 117 Resp: 2798
 Ion Ratio Lower Upper
 117 100
 119 85.9 76.9 115.3



#34
 Trichloroethene
 Concen: 30.417 ug/L
 RT: 5.96 min Scan# 1514
 Delta R.T. 0.00 min
 Lab File: VV014699.D
 Acq: 24 Feb 2020 15:06

Tgt Ion: 95 Resp: 34662
 Ion Ratio Lower Upper
 95 100
 97 65.5 44.3 82.3
 132 102.9 69.7 129.4
 130 100.1 71.3 132.5

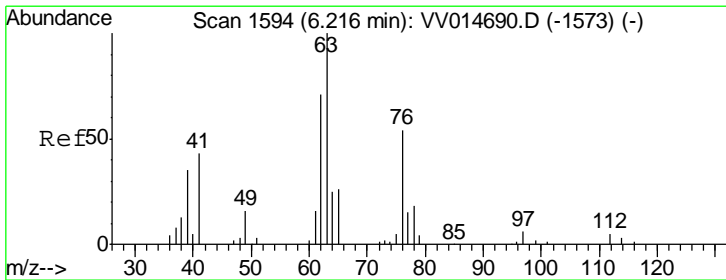
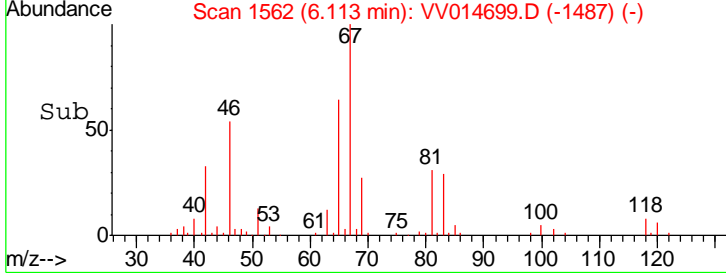
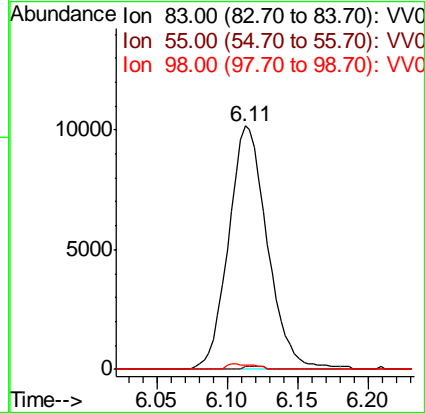
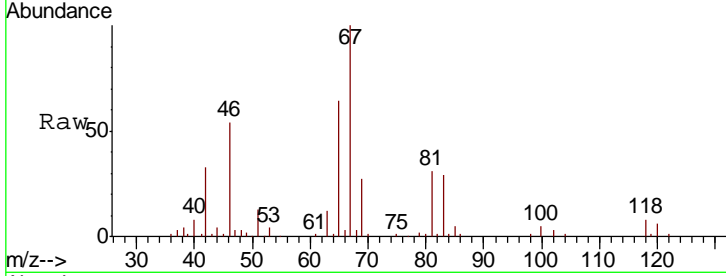




#35
 Methylcyclohexane
 Concen: 12.024 ug/L
 RT: 6.11 min Scan# 1562
 Delta R.T. -0.06 min
 Lab File: VV014699.D
 Acq: 24 Feb 2020 15:06

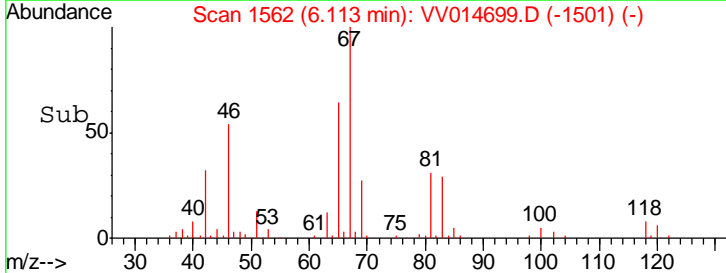
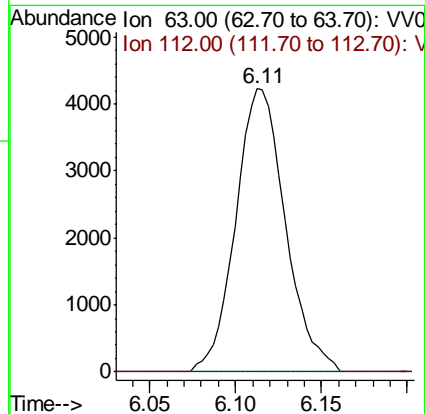
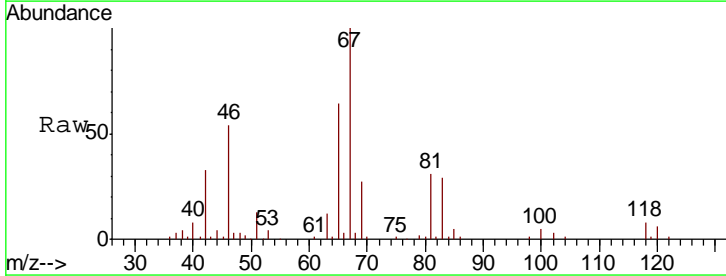
Instrument : MSVOA_V
 ClientSampled : COAR3

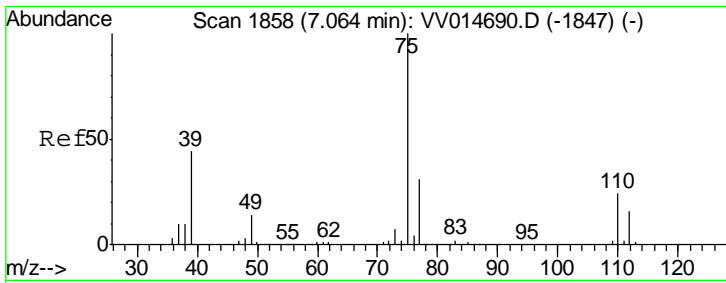
Tgt Ion	Resp	Lower	Upper
83	19558		
55	0.3	56.1	84.1#
98	0.9	40.4	60.6#



#37
 1,2-Dichloropropane
 Concen: 8.868 ug/L
 RT: 6.11 min Scan# 1562
 Delta R.T. -0.10 min
 Lab File: VV014699.D
 Acq: 24 Feb 2020 15:06

Tgt Ion	Resp	Lower	Upper
63	8491		
112	0.0	3.8	5.6#

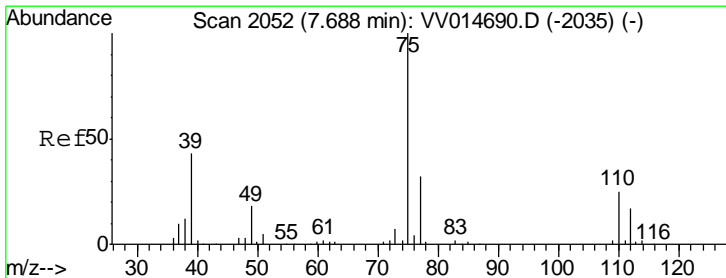
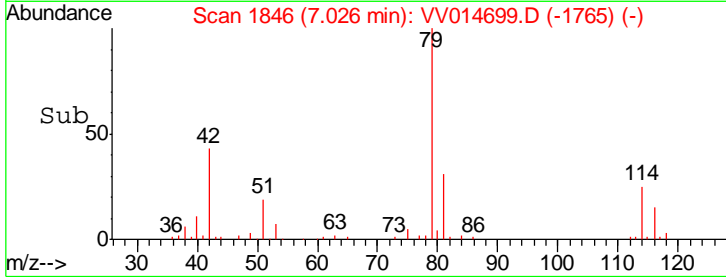
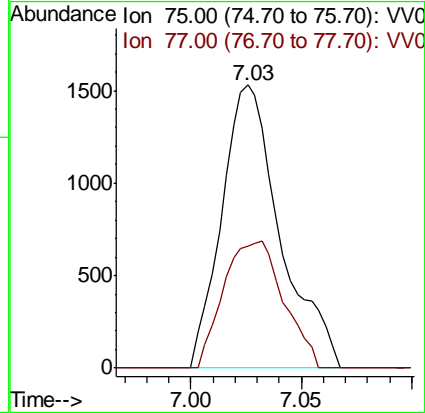
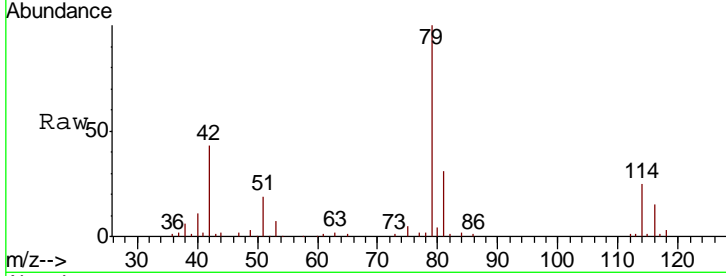




#39
 cis-1,3-Dichloropropene
 Concen: 1.655 ug/L
 RT: 7.03 min Scan# 1846
 Delta R.T. -0.04 min
 Lab File: VV014699.D
 Acq: 24 Feb 2020 15:06

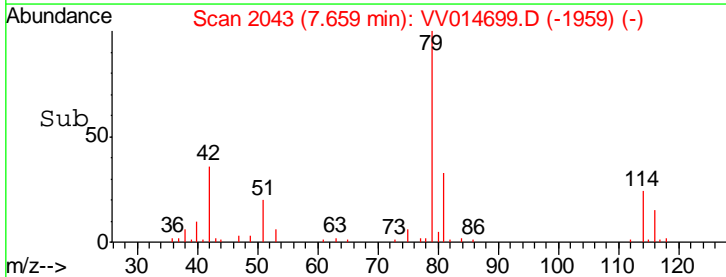
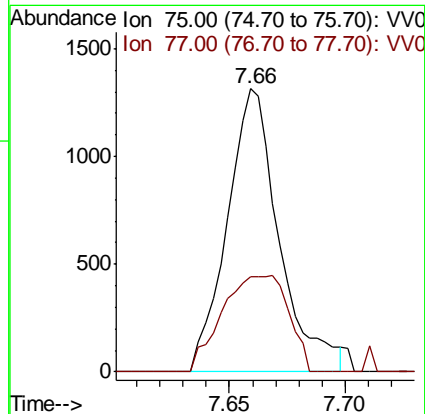
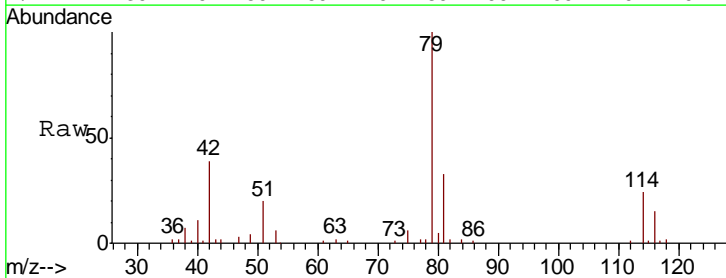
Instrument : MSVOA_V
 ClientSampled : COAR3

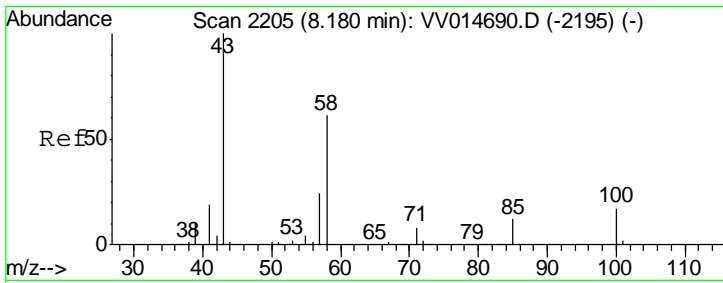
Tgt Ion: 75 Resp: 2830
 Ion Ratio Lower Upper
 75 100
 77 43.1 22.4 41.6#



#44
 trans-1,3-Dichloropropene
 Concen: 1.314 ug/L
 RT: 7.66 min Scan# 2043
 Delta R.T. -0.03 min
 Lab File: VV014699.D
 Acq: 24 Feb 2020 15:06

Tgt Ion: 75 Resp: 2039
 Ion Ratio Lower Upper
 75 100
 77 33.7 21.9 40.7

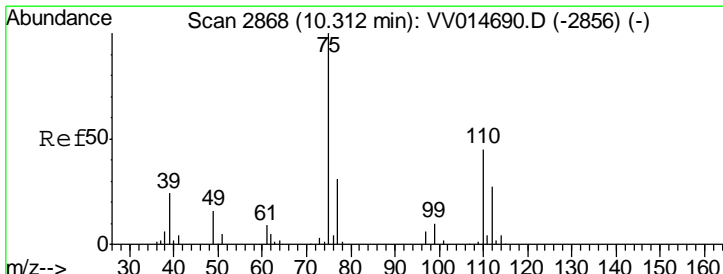
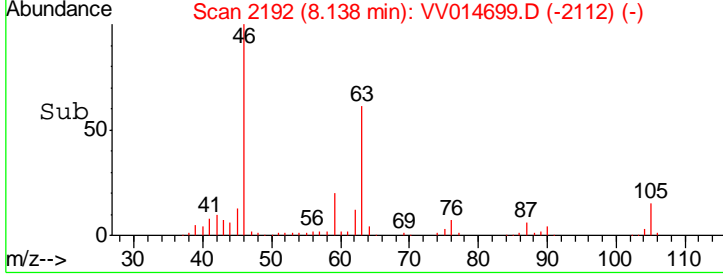
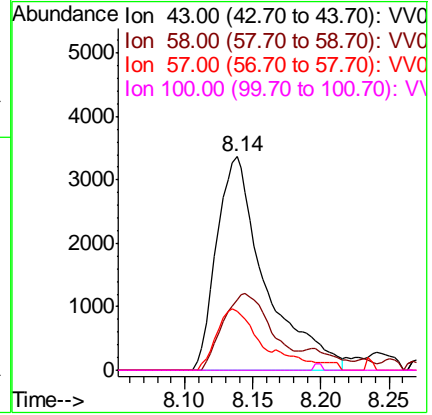
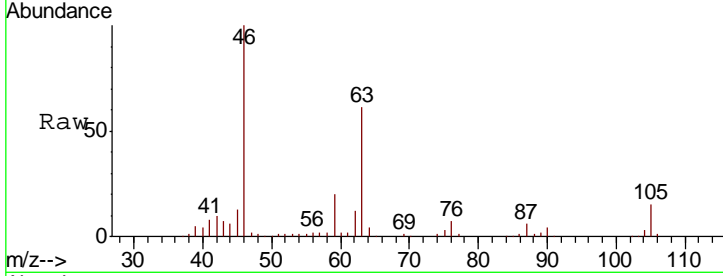




#48
 2-Hexanone
 Concen: 8.953 ug/L
 RT: 8.14 min Scan# 2192
 Delta R.T. -0.04 min
 Lab File: VV014699.D
 Acq: 24 Feb 2020 15:06

Instrument : MSVOA_V
 ClientSampled : C0AR3

Tgt Ion	Resp	Lower	Upper
43	100		
58	35.9	49.4	74.2#
57	22.7	17.8	26.8
100	0.0	13.1	19.7#



#59
 1,2,3-Trichloropropane
 Concen: 6.029 ug/L
 RT: 11.29 min Scan# 3171
 Delta R.T. 0.97 min
 Lab File: VV014699.D
 Acq: 24 Feb 2020 15:06

Tgt Ion	Resp	Lower	Upper
75	100		
77	42.7	25.7	38.5#

