

Data Path : Z:\voasrv\HPCHEM1\MSVOA_V\Data\VW022823\
 Data File : VW030100.D
 Acq On : 28 Feb 2023 15:32
 Operator : SY/MD
 Sample : VSTDCCC005EC
 Misc : 25.0mL/MSVOA_V/WATER
 ALS Vial : 12 Sample Multiplier: 1

Instrument :
 MSVOA_V
 ClientSampleId :
 VSTD005287

Quant Time: Mar 01 00:07:37 2023
 Quant Method : Z:\voasrv\HPCHEM1\MSVOA_V\Method\SFAMVTR022323WMA.M
 Quant Title : TRACE VOA SFAM1.0
 QLast Update : Wed Mar 01 00:04:57 2023
 Response via : Initial Calibration

Compound	R.T.	QIon	Response	Conc	Units	Dev(Min)
Internal Standards						
1) 1,4-Difluorobenzene	5.542	114	173382	5.000	ug/L	0.00
28) Chlorobenzene-d5	8.792	117	165434	5.000	ug/L	0.00
58) 1,4-Dichlorobenzene-d4	11.194	152	96706	5.000	ug/L	0.00
System Monitoring Compounds						
4) Vinyl Chloride-d3	1.281	65	57408	5.117	ug/L	0.00
Spiked Amount	5.000	Range 40 - 130	Recovery	=	102.400%	
7) Chloroethane-d5	1.539	69	55434	5.264	ug/L	0.00
Spiked Amount	5.000	Range 65 - 130	Recovery	=	105.200%	
11) 1,1-Dichloroethene-d2	2.066	63	120643	5.231	ug/L	0.00
Spiked Amount	5.000	Range 60 - 125	Recovery	=	104.600%	
20) 2-Butanone-d5	3.815	46	112700	54.487	ug/L	-0.02
Spiked Amount	50.000	Range 40 - 130	Recovery	=	108.980%	
24) Chloroform-d	4.259	84	124966	5.453	ug/L	0.00
Spiked Amount	5.000	Range 70 - 125	Recovery	=	109.000%	
26) 1,2-Dichloroethane-d4	4.956	65	51856	5.543	ug/L	0.00
Spiked Amount	5.000	Range 70 - 130	Recovery	=	110.800%	
32) Benzene-d6	4.969	84	242852	5.456	ug/L	0.00
Spiked Amount	5.000	Range 70 - 125	Recovery	=	109.200%	
36) 1,2-Dichloropropane-d6	5.998	67	72818	5.437	ug/L	0.00
Spiked Amount	5.000	Range 60 - 140	Recovery	=	108.800%	
41) Toluene-d8	7.252	98	232700	5.515	ug/L	0.00
Spiked Amount	5.000	Range 70 - 130	Recovery	=	110.200%	
43) trans-1,3-Dichloroprop...	7.561	79	25454	5.556	ug/L	0.00
Spiked Amount	5.000	Range 55 - 130	Recovery	=	111.200%	
46) 2-Hexanone-d5	8.034	63	106956	56.425	ug/L	0.00
Spiked Amount	50.000	Range 45 - 130	Recovery	=	112.860%	
56) 1,1,2,2-Tetrachloroeth...	10.162	84	51861	5.443	ug/L	0.00
Spiked Amount	5.000	Range 65 - 120	Recovery	=	108.800%	
66) 1,2-Dichlorobenzene-d4	11.570	152	89752	5.485	ug/L	0.00
Spiked Amount	5.000	Range 80 - 120	Recovery	=	109.800%	
Target Compounds						
2) Dichlorodifluoromethane	1.108	85	75913	5.381	ug/L	98
3) Chloromethane	1.217	50	104362	4.695	ug/L	98
5) Vinyl chloride	1.288	62	78615	5.321	ug/L	99
6) Bromomethane	1.494	94	17565	6.624	ug/L	99
8) Chloroethane	1.555	64	48138	5.348	ug/L	99
9) Trichlorofluoromethane	1.719	101	116053	5.475	ug/L	98
10) 1,1,2-Trichloro-1,2,2-...	2.076	101	71143	5.412	ug/L	98
12) 1,1-Dichloroethene	2.076	96	61743	5.306	ug/L	95
13) Acetone	2.146	43	75775	49.566	ug/L #	48
14) Carbon disulfide	2.249	76	163090	5.238	ug/L	99
15) Methyl Acetate	2.394	43	16738	4.688	ug/L	94
16) Methylene chloride	2.455	84	65320	4.595	ug/L	97
17) Methyl tert-butyl Ether	2.712	73	122052	5.364	ug/L	100
18) trans-1,2-Dichloroethene	2.703	96	59796	5.402	ug/L	99
19) 1,1-Dichloroethane	3.121	63	112283	5.445	ug/L	99
21) 2-Butanone	3.902	43	106805	51.948	ug/L	97
22) cis-1,2-Dichloroethene	3.825	96	65534	5.357	ug/L	96
23) Bromochloromethane	4.159	128	28793	5.507	ug/L	99
25) Chloroform	4.288	83	117094	5.459	ug/L	99

Data Path : Z:\voasrv\HPCHEM1\MSVOA_V\Data\VW022823\
 Data File : VW030100.D
 Acq On : 28 Feb 2023 15:32
 Operator : SY/MD
 Sample : VSTDCCC005EC
 Misc : 25.0mL/MSVOA_V/WATER
 ALS Vial : 12 Sample Multiplier: 1

Instrument :
 MSVOA_V
 ClientSampleId :
 VSTD005287

Quant Time: Mar 01 00:07:37 2023
 Quant Method : Z:\voasrv\HPCHEM1\MSVOA_V\Method\SFAMVTR022323WMA.M
 Quant Title : TRACE VOA SFAM1.0
 QLast Update : Wed Mar 01 00:04:57 2023
 Response via : Initial Calibration

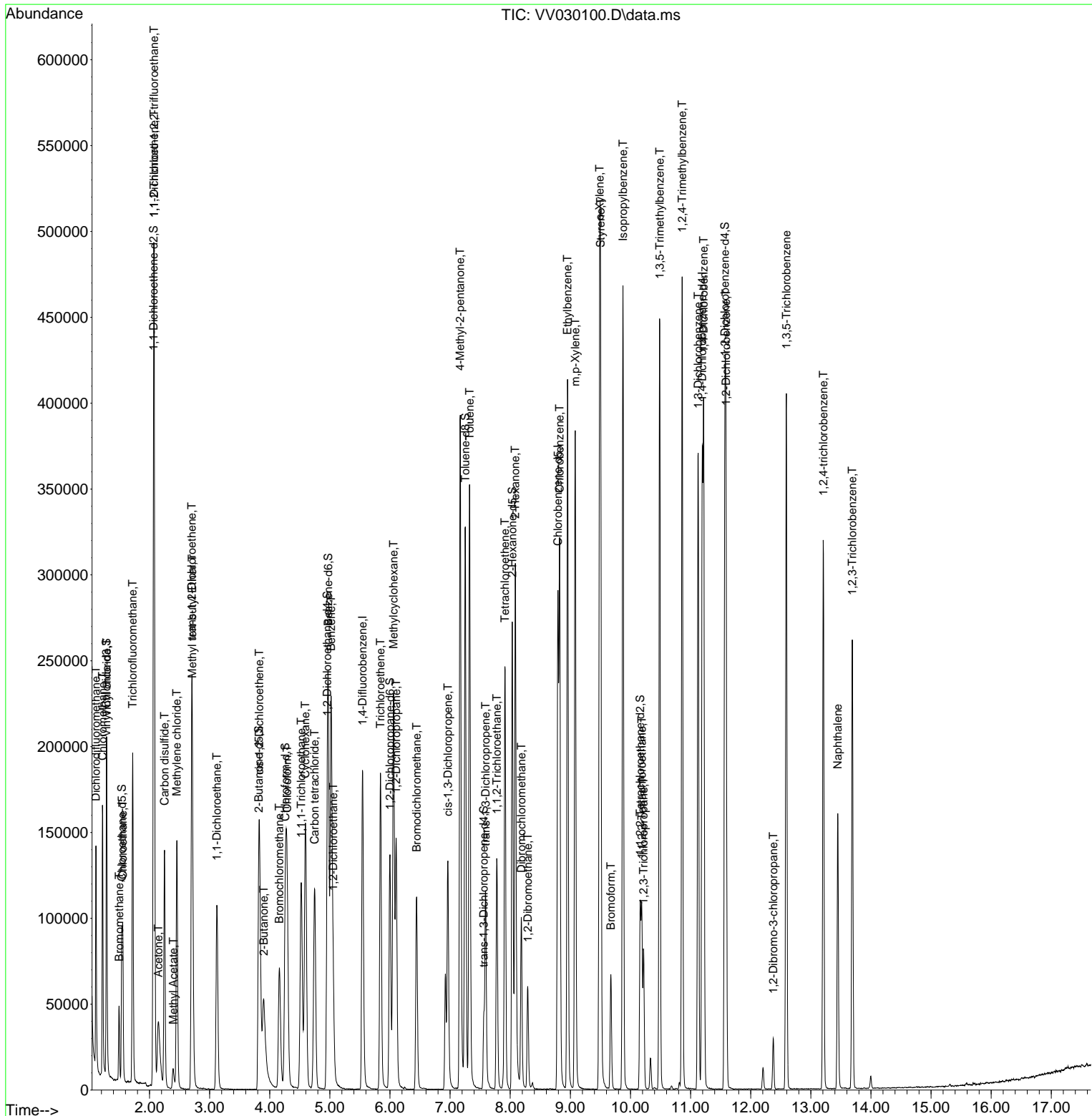
Compound	R.T.	QIon	Response	Conc	Units	Dev(Min)
27) 1,2-Dichloroethane	5.053	62	60084	5.355	ug/L	98
29) 1,1,1-Trichloroethane	4.522	97	106566	5.484	ug/L	100
30) Cyclohexane	4.593	56	87058	5.185	ug/L	99
31) Carbon tetrachloride	4.744	117	94660	5.419	ug/L	98
33) Benzene	5.021	78	245890	5.442	ug/L	100
34) Trichloroethene	5.841	95	67674	5.345	ug/L	98
35) Methylcyclohexane	6.059	83	100371	5.238	ug/L	99
37) 1,2-Dichloropropane	6.101	63	61484	5.349	ug/L	99
38) Bromodichloromethane	6.442	83	80298	5.472	ug/L	99
39) cis-1,3-Dichloropropene	6.963	75	89975	5.347	ug/L	99
40) 4-Methyl-2-pentanone	7.169	43	258632	54.528	ug/L	99
42) Toluene	7.323	91	270479	5.527	ug/L	100
44) trans-1,3-Dichloropropene	7.590	75	72580	5.526	ug/L	99
45) 1,1,2-Trichloroethane	7.776	97	43861	5.333	ug/L	97
47) Tetrachloroethene	7.911	164	59577	5.482	ug/L	98
48) 2-Hexanone	8.085	43	187440	55.201	ug/L	99
49) Dibromochloromethane	8.185	129	53702	5.580	ug/L	97
50) 1,2-Dibromoethane	8.291	107	41545	5.414	ug/L	94
51) Chlorobenzene	8.821	112	177152	5.368	ug/L	99
52) Ethylbenzene	8.953	91	291090	5.466	ug/L	100
53) m,p-Xylene	9.082	106	113822	5.561	ug/L	100
54) o-Xylene	9.487	106	108495	5.549	ug/L	99
55) Styrene	9.503	104	185784	5.714	ug/L	98
57) 1,1,2,2-Tetrachloroethane	10.188	83	50890	5.532	ug/L	99
59) Bromoform	9.673	173	31251	5.392	ug/L	99
60) Isopropylbenzene	9.876	105	305460	5.490	ug/L	100
61) 1,2,3-Trichloropropane	10.217	75	33693	5.206	ug/L	99
62) 1,3,5-Trimethylbenzene	10.487	105	247186	5.408	ug/L	99
63) 1,2,4-Trimethylbenzene	10.860	105	255770	5.470	ug/L	98
64) 1,3-Dichlorobenzene	11.127	146	155696	5.374	ug/L	99
65) 1,4-Dichlorobenzene	11.217	146	155473	5.319	ug/L	98
67) 1,2-Dichlorobenzene	11.590	146	140520	5.493	ug/L	100
68) 1,2-Dibromo-3-chloropr...	12.374	75	7509	5.195	ug/L	95
69) 1,3,5-Trichlorobenzene	12.593	180	127557	5.356	ug/L	100
70) 1,2,4-trichlorobenzene	13.207	180	100534	5.210	ug/L	99
71) Naphthalene	13.448	128	124817	4.950	ug/L	99
72) 1,2,3-Trichlorobenzene	13.689	180	82083	5.168	ug/L	99

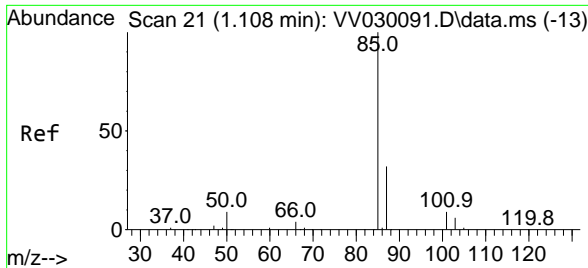
(#) = qualifier out of range (m) = manual integration (+) = signals summed

Data Path : Z:\voasrv\HPCHEM1\MSVOA_V\Data\VV022823\
 Data File : VV030100.D
 Acq On : 28 Feb 2023 15:32
 Operator : SY/MD
 Sample : VSTDCCC005EC
 Misc : 25.0mL/MSVOA_V/WATER
 ALS Vial : 12 Sample Multiplier: 1

Instrument :
 MSVOA_V
ClientSampleId :
 VSTD005287

Quant Time: Mar 01 00:07:37 2023
 Quant Method : Z:\voasrv\HPCHEM1\MSVOA_V\Method\SFAMVTR022323WMA.M
 Quant Title : TRACE VOA SFAM1.0
 QLast Update : Wed Mar 01 00:04:57 2023
 Response via : Initial Calibration

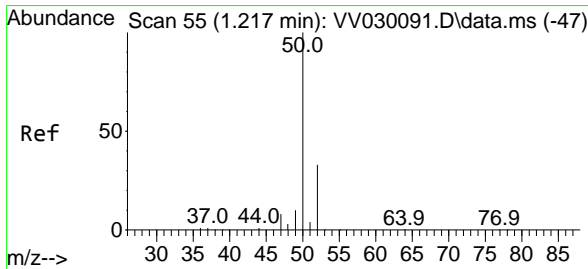
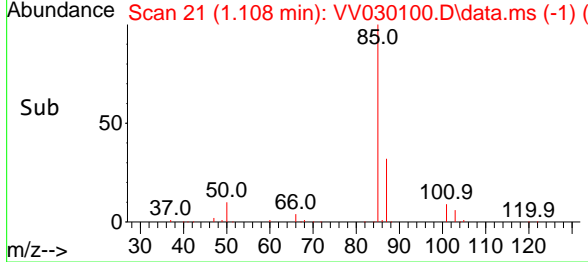
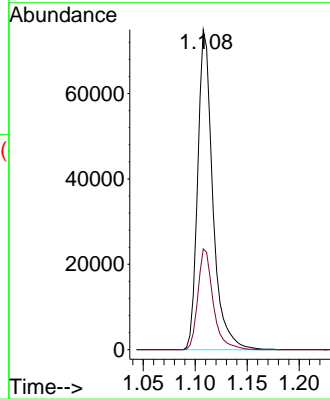
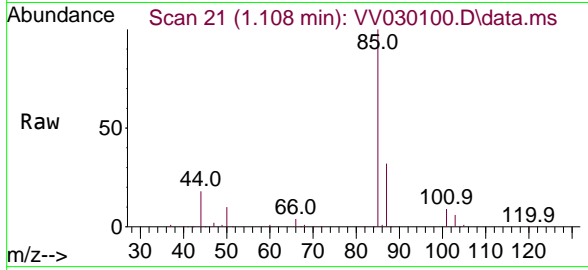




#2
 Dichlorodifluoromethane
 Concen: 5.381 ug/L
 RT: 1.108 min Scan# 21
 Delta R.T. -0.000 min
 Lab File: VV030100.D
 Acq: 28 Feb 2023 15:32

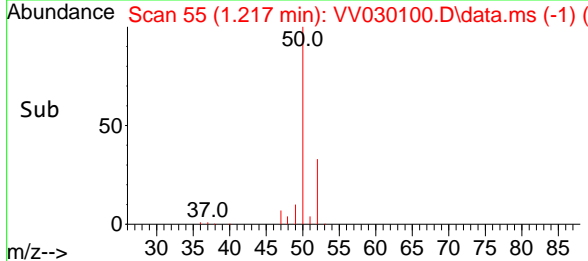
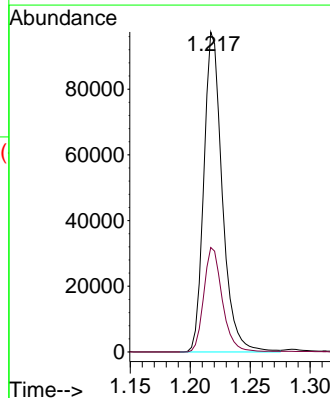
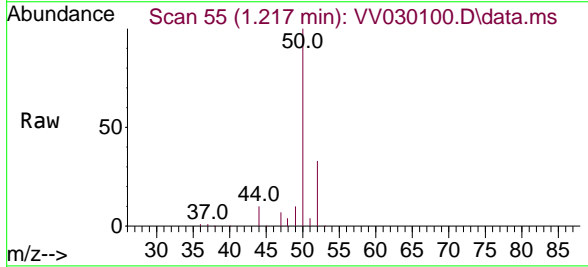
Instrument : MSVOA_V
 ClientSampleId : VSTD005287

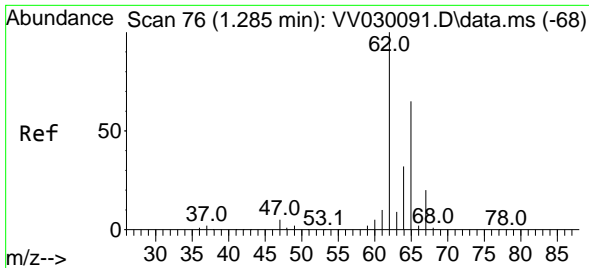
Tgt Ion: 85 Resp: 75913
 Ion Ratio Lower Upper
 85 100
 87 31.9 26.6 39.8



#3
 Chloromethane
 Concen: 4.695 ug/L
 RT: 1.217 min Scan# 55
 Delta R.T. -0.000 min
 Lab File: VV030100.D
 Acq: 28 Feb 2023 15:32

Tgt Ion: 50 Resp: 104362
 Ion Ratio Lower Upper
 50 100
 52 32.7 23.6 43.8

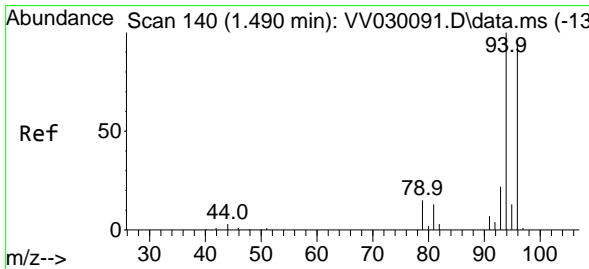
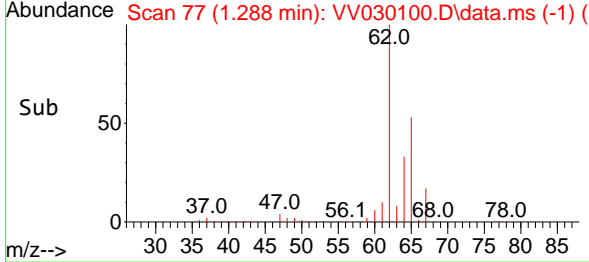
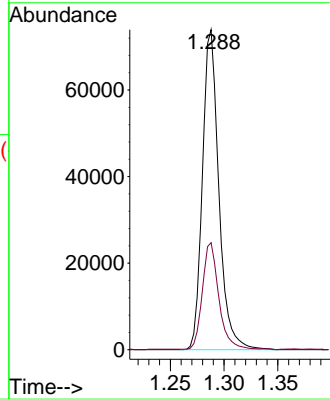
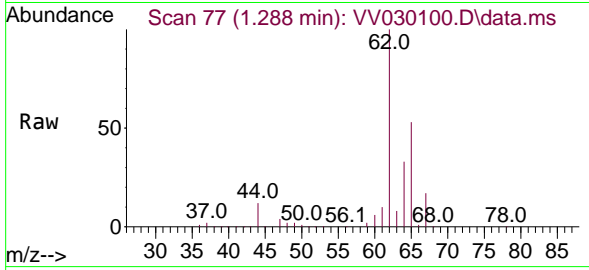




#5
 Vinyl chloride
 Concen: 5.321 ug/L
 RT: 1.288 min Scan# 71
 Delta R.T. 0.003 min
 Lab File: VV030100.D
 Acq: 28 Feb 2023 15:32

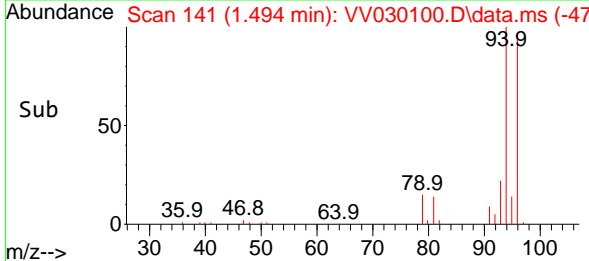
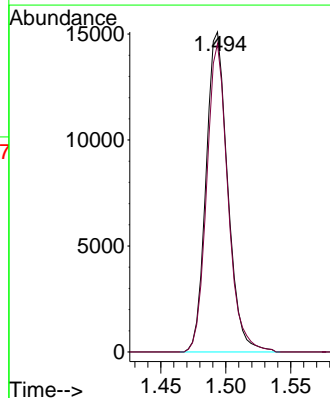
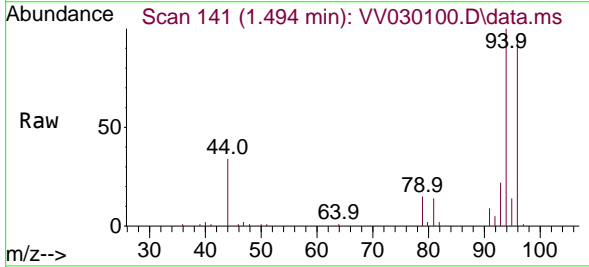
Instrument :
 MSVOA_V
 ClientSampleId :
 VSTD005287

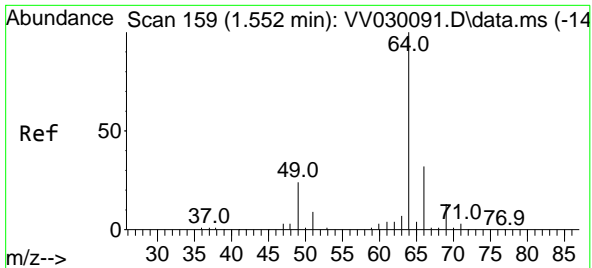
Tgt Ion: 62 Resp: 78615
 Ion Ratio Lower Upper
 62 100
 64 33.4 23.1 42.9



#6
 Bromomethane
 Concen: 6.624 ug/L
 RT: 1.494 min Scan# 141
 Delta R.T. 0.003 min
 Lab File: VV030100.D
 Acq: 28 Feb 2023 15:32

Tgt Ion: 94 Resp: 17565
 Ion Ratio Lower Upper
 94 100
 96 96.3 68.4 127.0

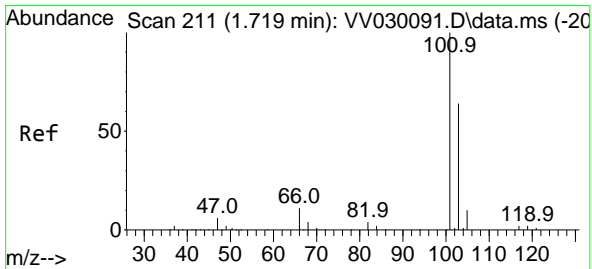
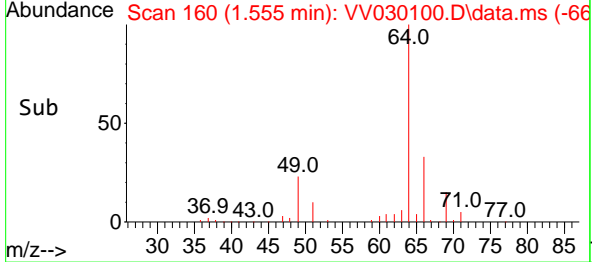
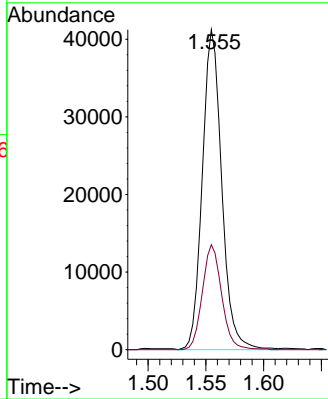
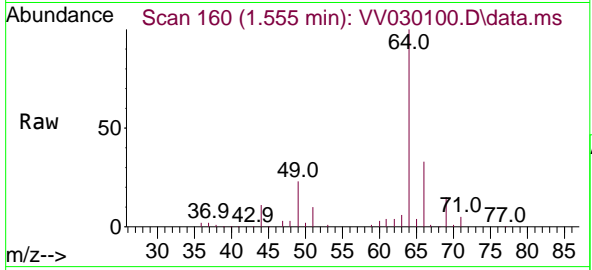




#8
 Chloroethane
 Concen: 5.348 ug/L
 RT: 1.555 min Scan# 10
 Delta R.T. 0.003 min
 Lab File: VV030100.D
 Acq: 28 Feb 2023 15:32

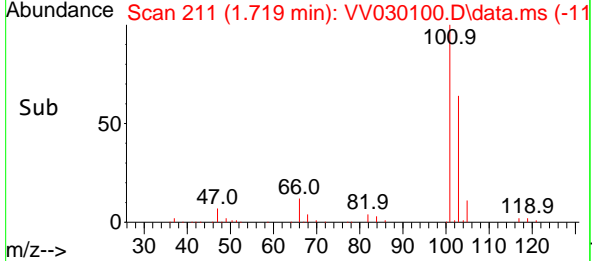
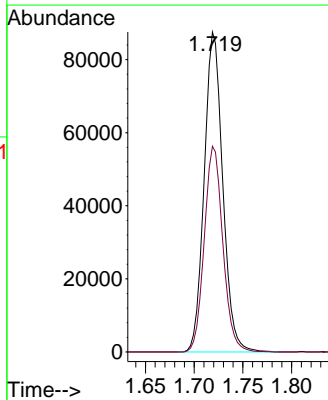
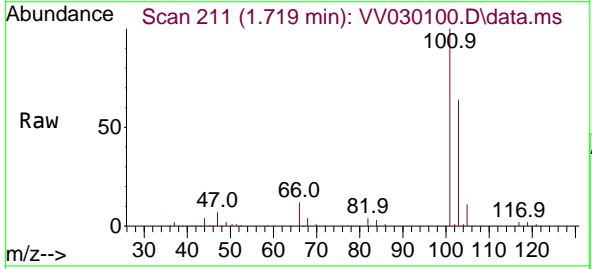
Instrument : MSVOA_V
 ClientSampleId : VSTD005287

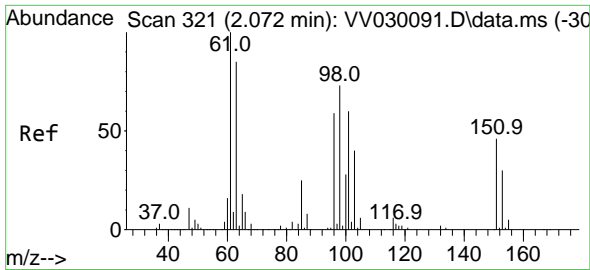
Tgt Ion: 64 Resp: 48138
 Ion Ratio Lower Upper
 64 100
 66 32.8 22.4 41.6



#9
 Trichlorofluoromethane
 Concen: 5.475 ug/L
 RT: 1.719 min Scan# 211
 Delta R.T. -0.000 min
 Lab File: VV030100.D
 Acq: 28 Feb 2023 15:32

Tgt Ion: 101 Resp: 116053
 Ion Ratio Lower Upper
 101 100
 103 64.4 52.7 79.1

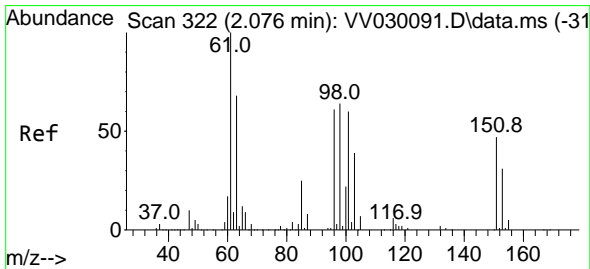
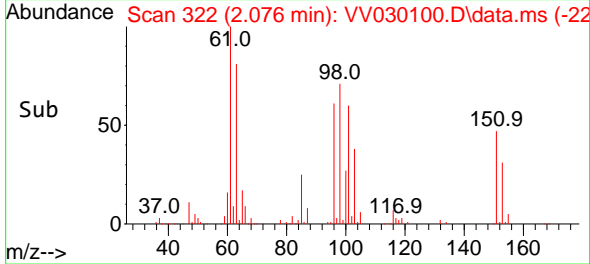
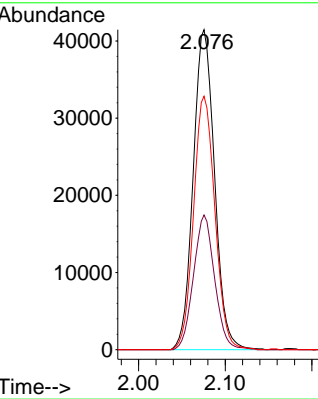
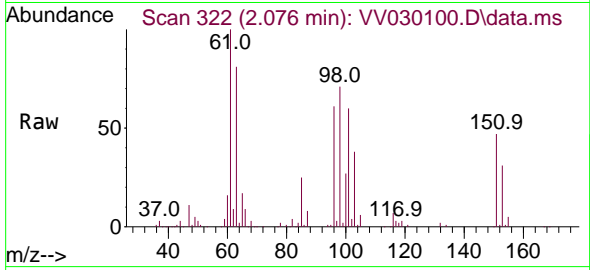




#10
 1,1,2-Trichloro-1,2,2-trifluoroethane
 Concen: 5.412 ug/L
 RT: 2.076 min Scan# 311
 Delta R.T. 0.003 min
 Lab File: VV030100.D
 Acq: 28 Feb 2023 15:32

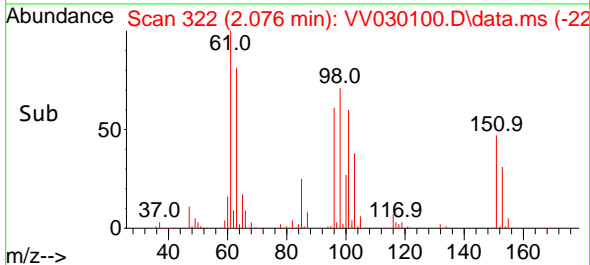
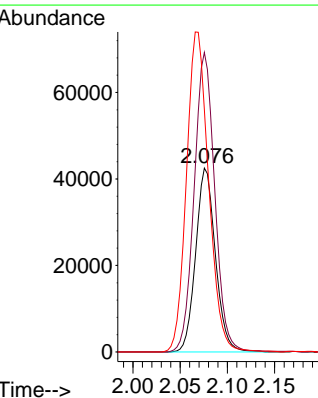
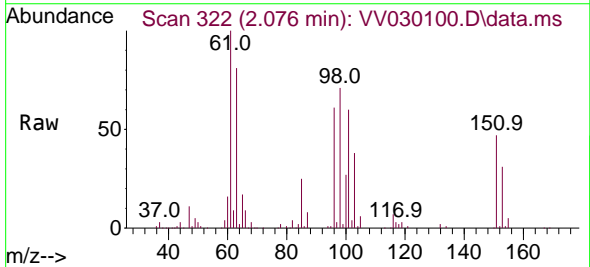
Instrument :
 MSVOA_V
 ClientSampleId :
 VSTD005287

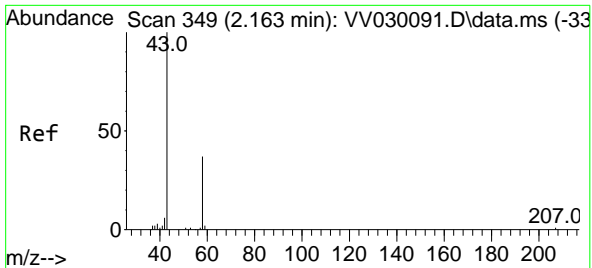
Tgt Ion	Resp	Lower	Upper
101	71143		
101	100		
85	41.6	33.5	50.3
151	79.1	61.6	92.4



#12
 1,1-Dichloroethene
 Concen: 5.306 ug/L
 RT: 2.076 min Scan# 322
 Delta R.T. -0.000 min
 Lab File: VV030100.D
 Acq: 28 Feb 2023 15:32

Tgt Ion	Resp	Lower	Upper
96	61743		
96	100		
61	162.9	115.6	214.6
63	131.8	85.6	159.0

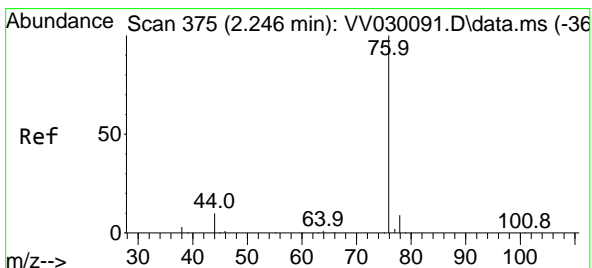
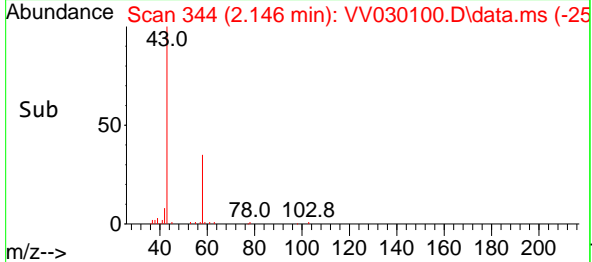
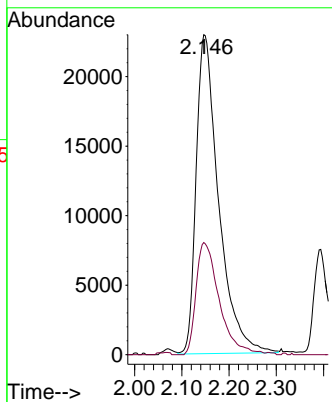
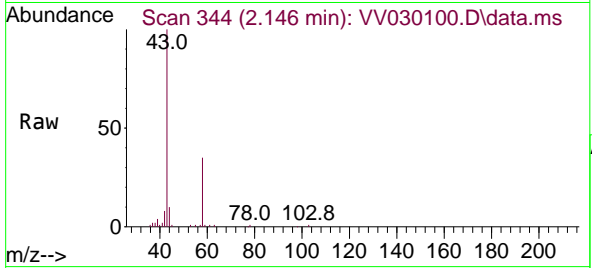




#13
 Acetone
 Concen: 49.566 ug/L
 RT: 2.146 min Scan# 34
 Delta R.T. -0.016 min
 Lab File: VV030100.D
 Acq: 28 Feb 2023 15:32

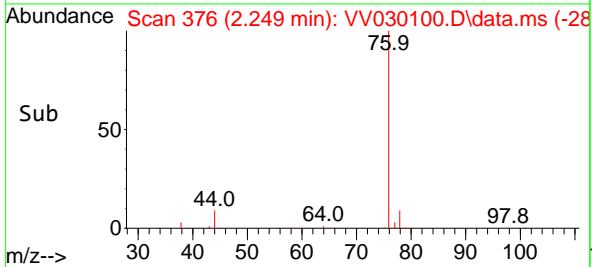
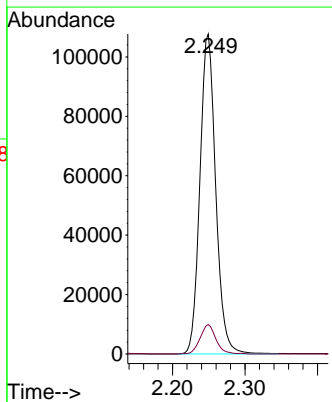
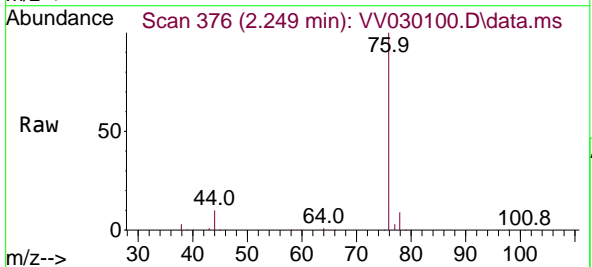
Instrument : MSVOA_V
 ClientSampleId : VSTD005287

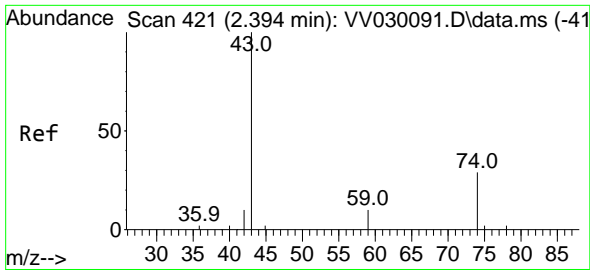
Tgt Ion: 43 Resp: 75775
 Ion Ratio Lower Upper
 43 100
 58 36.2 0.0 29.4#



#14
 Carbon disulfide
 Concen: 5.238 ug/L
 RT: 2.249 min Scan# 376
 Delta R.T. 0.003 min
 Lab File: VV030100.D
 Acq: 28 Feb 2023 15:32

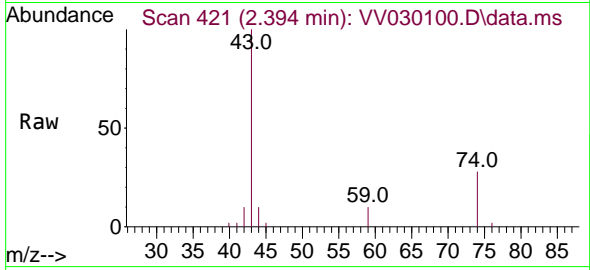
Tgt Ion: 76 Resp: 163090
 Ion Ratio Lower Upper
 76 100
 78 9.2 7.7 11.5



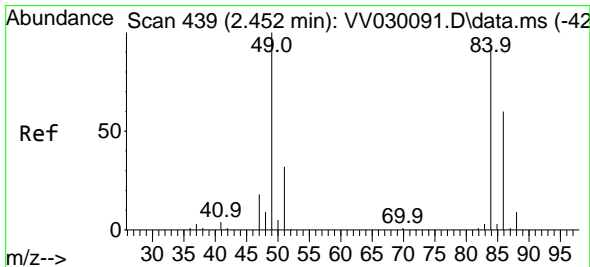
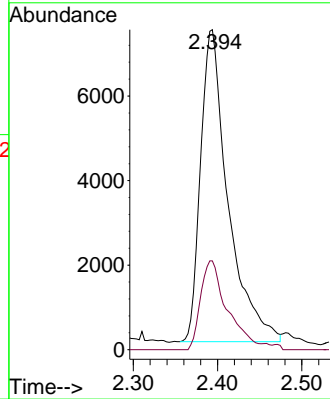
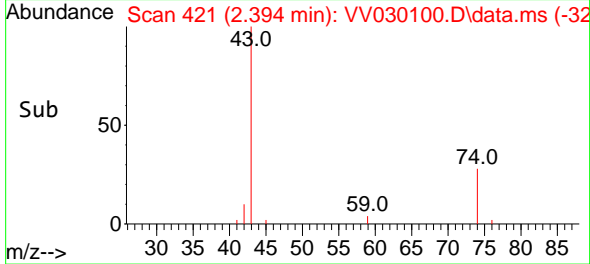


#15
 Methyl Acetate
 Concen: 4.688 ug/L
 RT: 2.394 min Scan# 41
 Delta R.T. -0.000 min
 Lab File: VV030100.D
 Acq: 28 Feb 2023 15:32

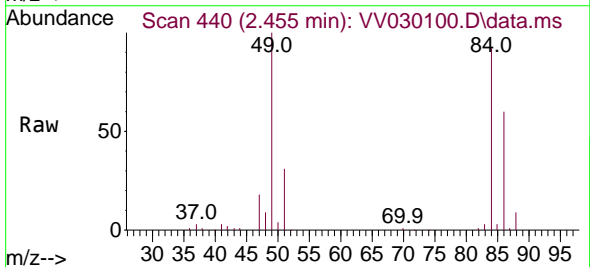
Instrument : MSVOA_V
 ClientSampleId : VSTD005287



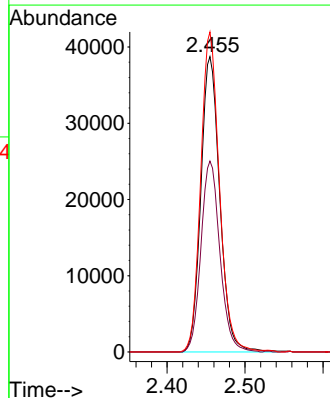
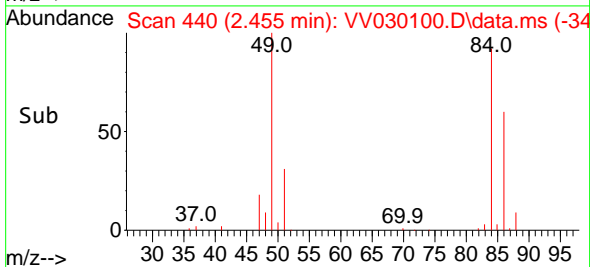
Tgt Ion: 43 Resp: 16738
 Ion Ratio Lower Upper
 43 100
 74 28.2 20.1 30.1

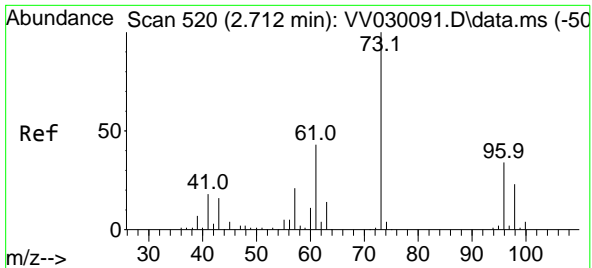


#16
 Methylene chloride
 Concen: 4.595 ug/L
 RT: 2.455 min Scan# 440
 Delta R.T. 0.003 min
 Lab File: VV030100.D
 Acq: 28 Feb 2023 15:32



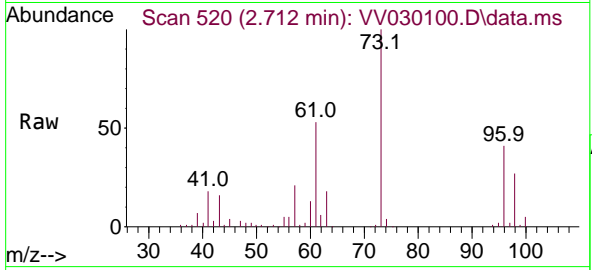
Tgt Ion: 84 Resp: 65320
 Ion Ratio Lower Upper
 84 100
 86 64.6 44.7 83.1
 49 108.3 78.8 146.3



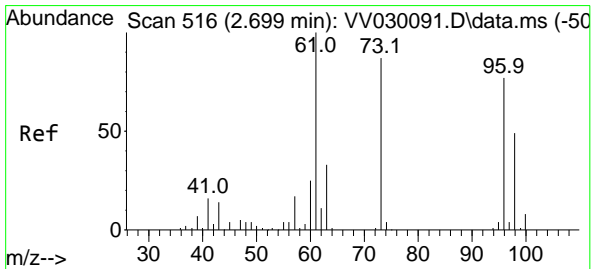
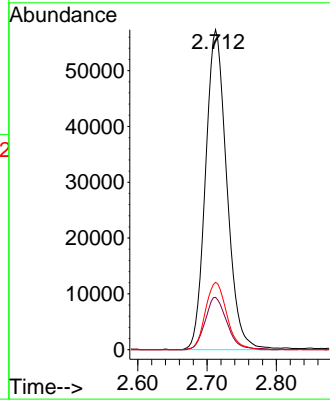
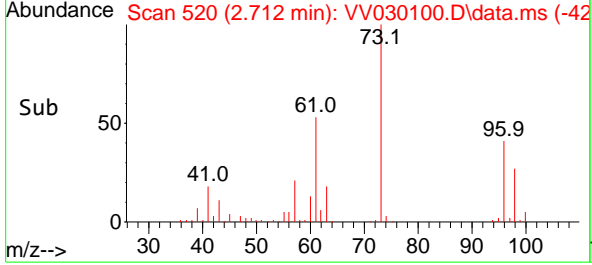


#17
 Methyl tert-butyl Ether
 Concen: 5.364 ug/L
 RT: 2.712 min Scan# 517
 Delta R.T. -0.000 min
 Lab File: VV030100.D
 Acq: 28 Feb 2023 15:32

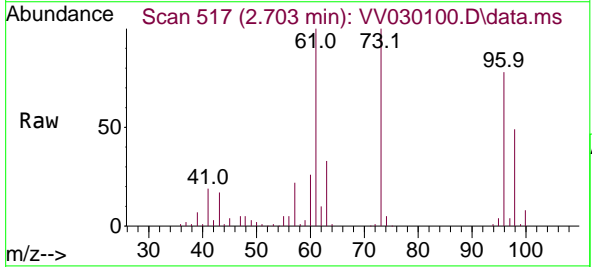
Instrument : MSVOA_V
 ClientSampleId : VSTD005287



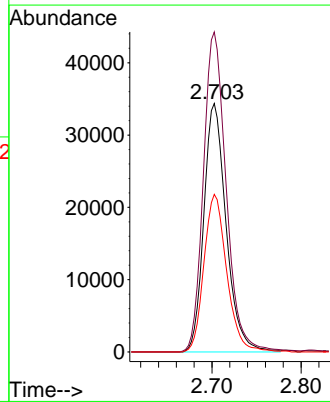
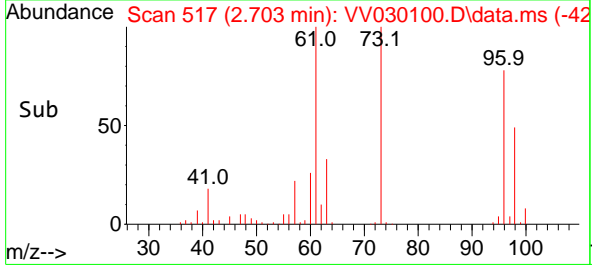
Tgt Ion: 73 Resp: 122052
 Ion Ratio Lower Upper
 73 100
 43 16.7 13.4 20.2
 57 21.1 16.8 25.2

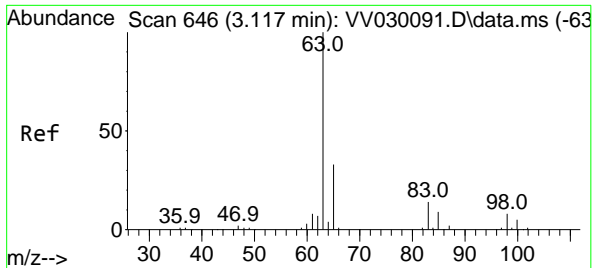


#18
 trans-1,2-Dichloroethene
 Concen: 5.402 ug/L
 RT: 2.703 min Scan# 517
 Delta R.T. 0.003 min
 Lab File: VV030100.D
 Acq: 28 Feb 2023 15:32



Tgt Ion: 96 Resp: 59796
 Ion Ratio Lower Upper
 96 100
 61 128.8 91.0 169.0
 98 63.4 45.2 84.0



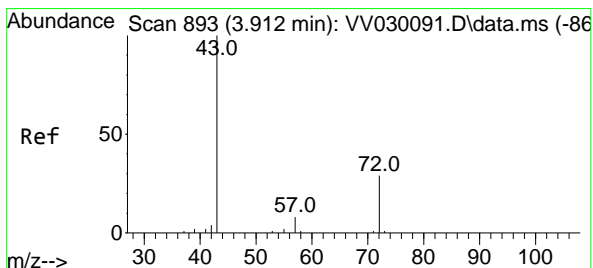
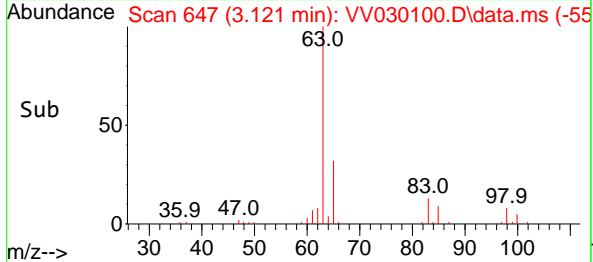
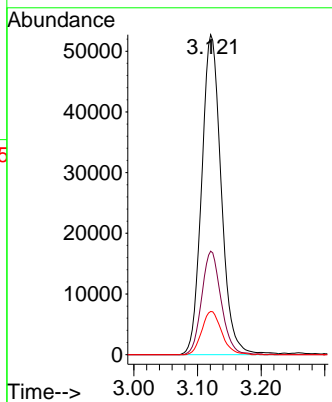
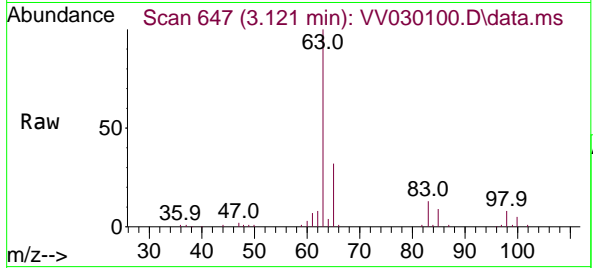


#19
 1,1-Dichloroethane
 Concen: 5.445 ug/L
 RT: 3.121 min Scan# 64
 Delta R.T. 0.003 min
 Lab File: VV030100.D
 Acq: 28 Feb 2023 15:32

Instrument : MSVOA_V
 ClientSampleId : VSTD005287

Tgt Ion: 63 Resp: 112283

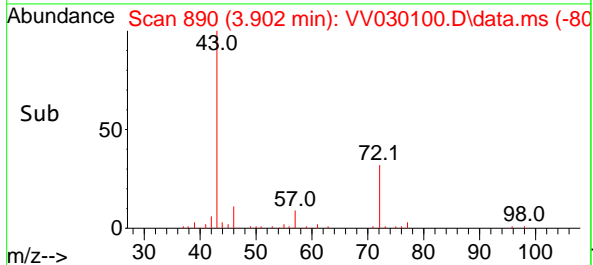
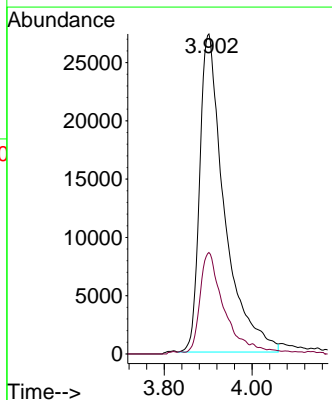
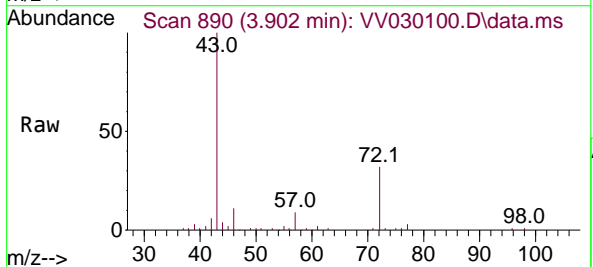
Ion	Ratio	Lower	Upper
63	100		
65	32.4	23.0	42.8
83	13.5	9.6	17.8

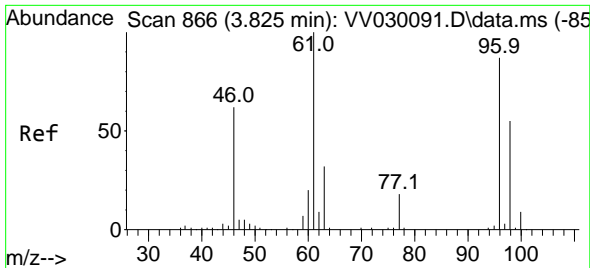


#21
 2-Butanone
 Concen: 51.948 ug/L
 RT: 3.902 min Scan# 890
 Delta R.T. -0.010 min
 Lab File: VV030100.D
 Acq: 28 Feb 2023 15:32

Tgt Ion: 43 Resp: 106805

Ion	Ratio	Lower	Upper
43	100		
72	28.5	15.1	45.3





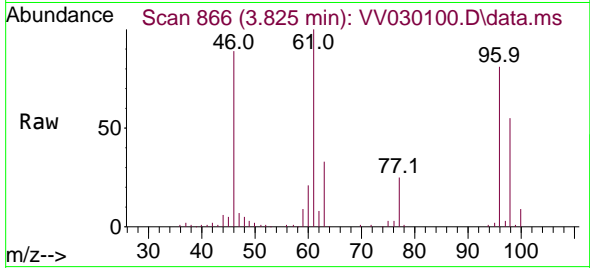
#22
 cis-1,2-Dichloroethene
 Concen: 5.357 ug/L
 RT: 3.825 min Scan# 866
 Delta R.T. -0.000 min
 Lab File: VV030100.D
 Acq: 28 Feb 2023 15:32

Instrument :

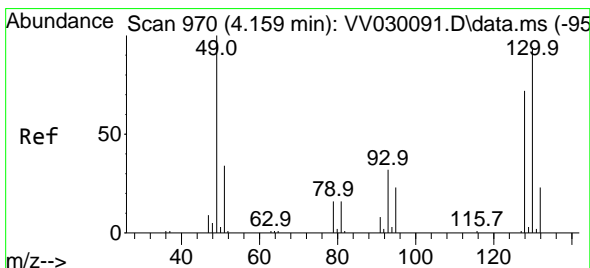
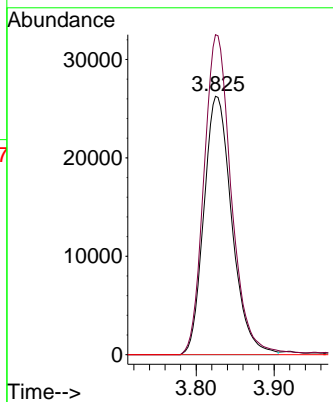
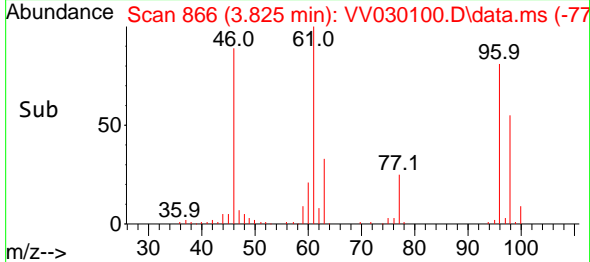
MSVOA_V

ClientSampleId :

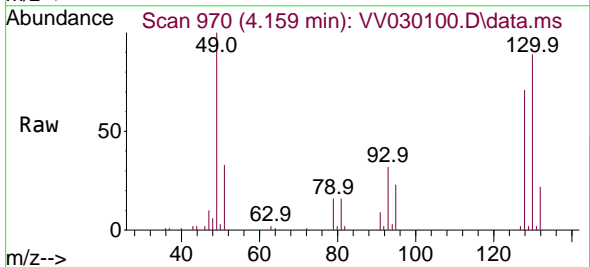
VSTD005287



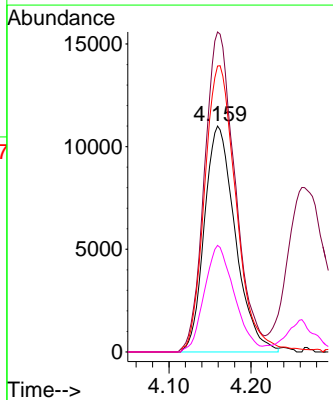
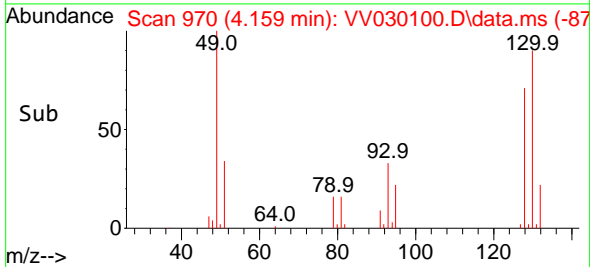
Tgt Ion: 96 Resp: 65534
 Ion Ratio Lower Upper
 96 100
 61 123.8 83.4 154.8
 68 0.0 0.0 0.0

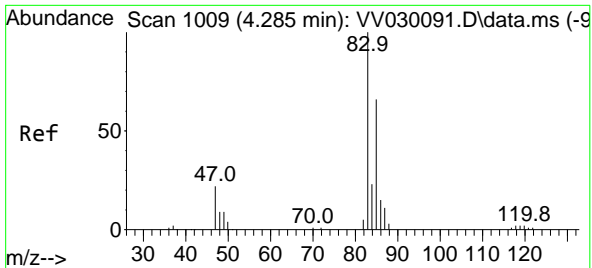


#23
 Bromochloromethane
 Concen: 5.507 ug/L
 RT: 4.159 min Scan# 970
 Delta R.T. -0.000 min
 Lab File: VV030100.D
 Acq: 28 Feb 2023 15:32



Tgt Ion: 128 Resp: 28793
 Ion Ratio Lower Upper
 128 100
 49 141.7 99.5 184.9
 130 126.6 90.5 168.1
 51 47.2 37.3 55.9

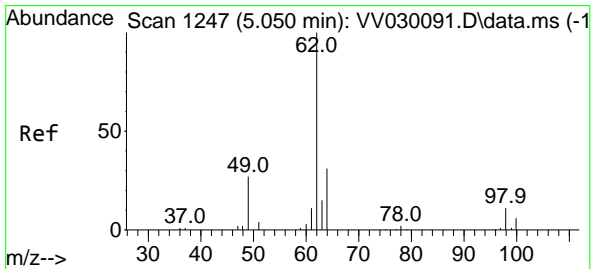
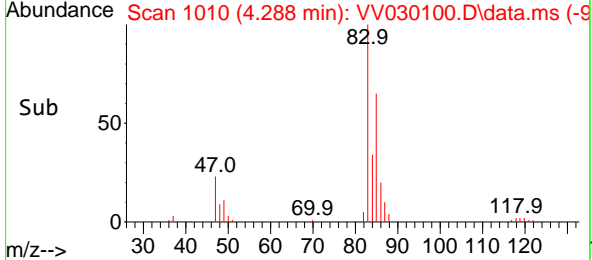
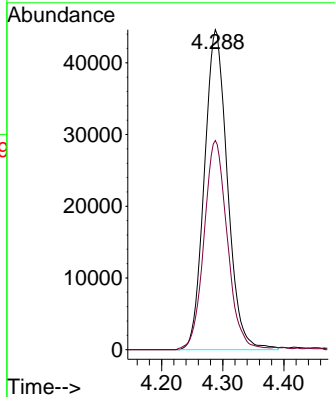
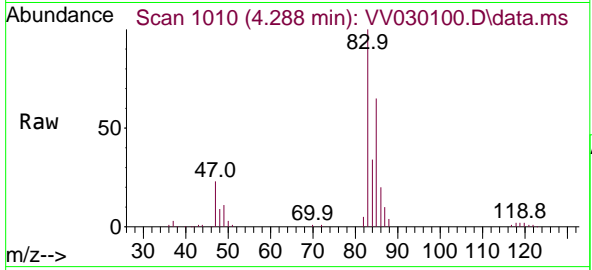




#25
 Chloroform
 Concen: 5.459 ug/L
 RT: 4.288 min Scan# 1009
 Delta R.T. 0.003 min
 Lab File: VV030100.D
 Acq: 28 Feb 2023 15:32

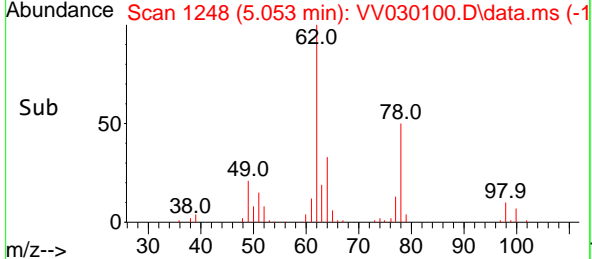
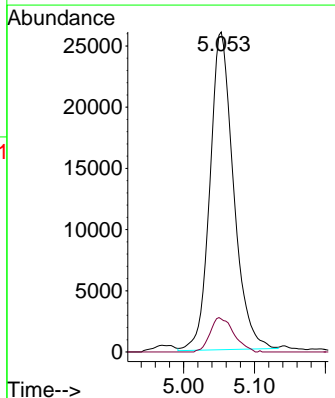
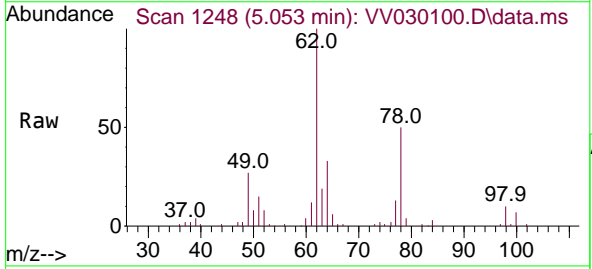
Instrument : MSVOA_V
 ClientSampleId : VSTD005287

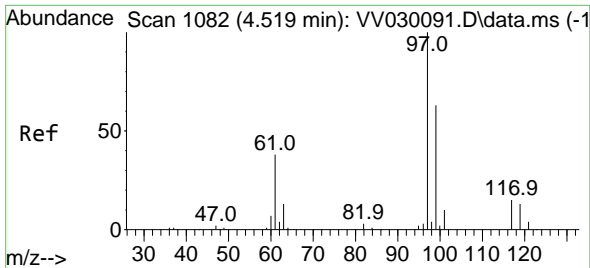
Tgt Ion: 83 Resp: 117094
 Ion Ratio Lower Upper
 83 100
 85 65.4 46.5 86.5



#27
 1,2-Dichloroethane
 Concen: 5.355 ug/L
 RT: 5.053 min Scan# 1248
 Delta R.T. 0.003 min
 Lab File: VV030100.D
 Acq: 28 Feb 2023 15:32

Tgt Ion: 62 Resp: 60084
 Ion Ratio Lower Upper
 62 100
 98 10.3 9.0 13.4



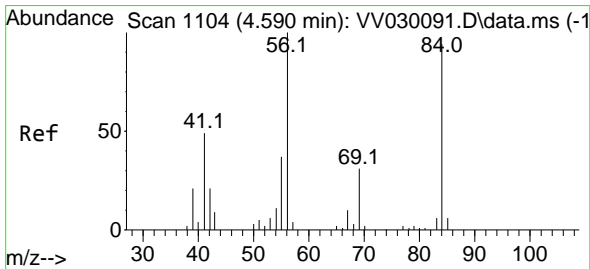
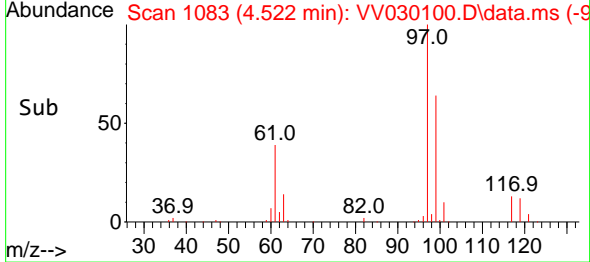
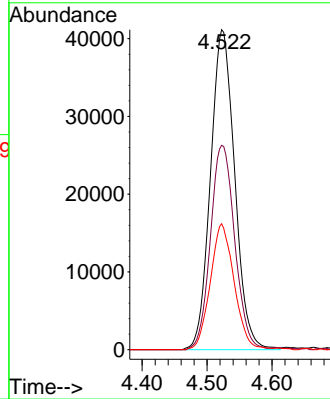
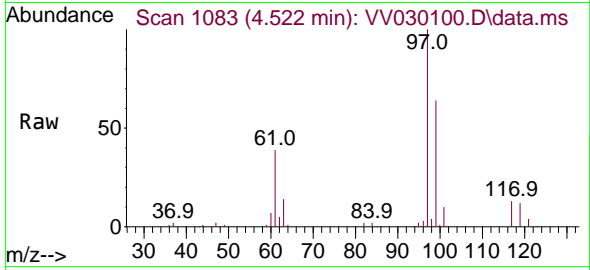


#29
 1,1,1-Trichloroethane
 Concen: 5.484 ug/L
 RT: 4.522 min Scan# 1083
 Delta R.T. 0.003 min
 Lab File: VV030100.D
 Acq: 28 Feb 2023 15:32

Instrument : MSVOA_V
 ClientSampleId : VSTD005287

Tgt Ion: 97 Resp: 106566

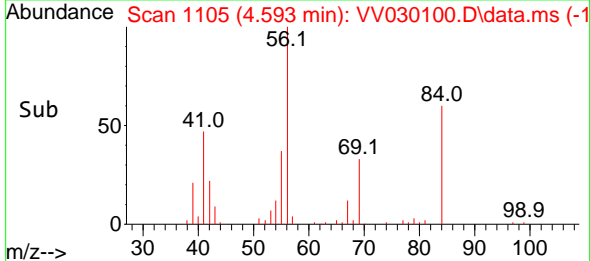
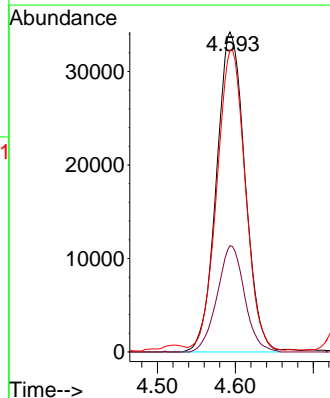
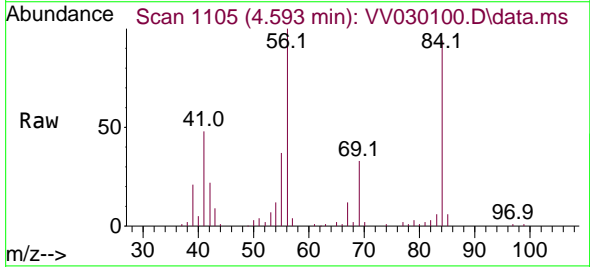
Ion	Ratio	Lower	Upper
97	100		
99	64.0	51.3	76.9
61	38.8	31.5	47.3

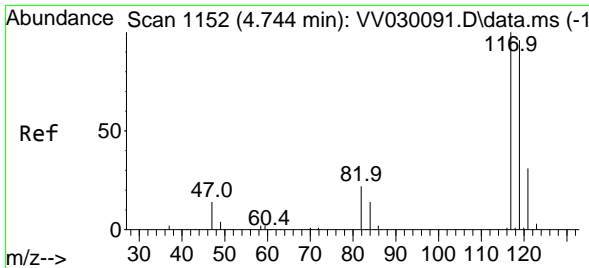


#30
 Cyclohexane
 Concen: 5.185 ug/L
 RT: 4.593 min Scan# 1105
 Delta R.T. 0.003 min
 Lab File: VV030100.D
 Acq: 28 Feb 2023 15:32

Tgt Ion: 56 Resp: 87058

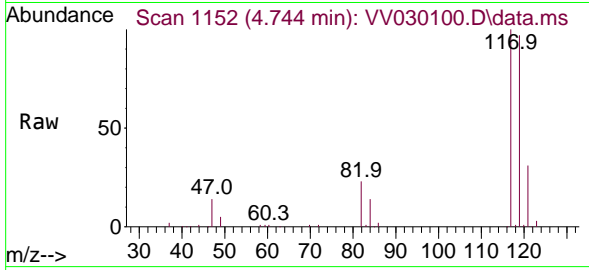
Ion	Ratio	Lower	Upper
56	100		
69	32.0	25.1	37.7
84	93.6	74.6	111.8



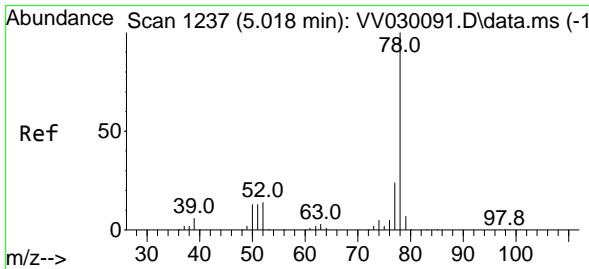
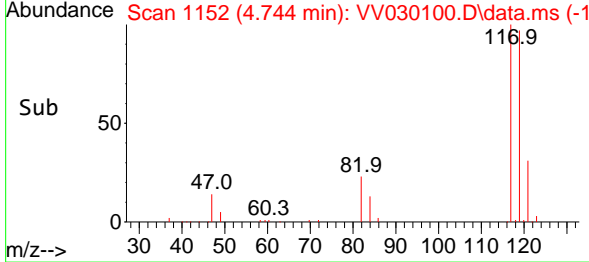
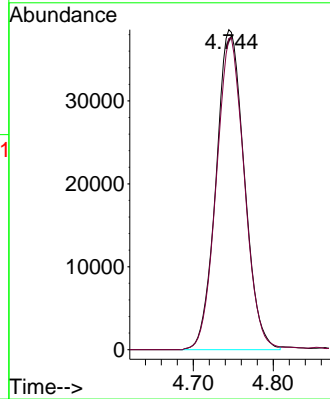


#31
 Carbon tetrachloride
 Concen: 5.419 ug/L
 RT: 4.744 min Scan# 1152
 Delta R.T. -0.000 min
 Lab File: VV030100.D
 Acq: 28 Feb 2023 15:32

Instrument : MSVOA_V
 ClientSampleId : VSTD005287

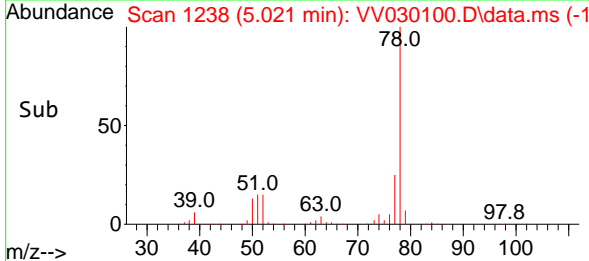
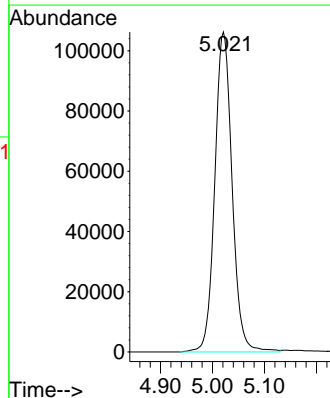
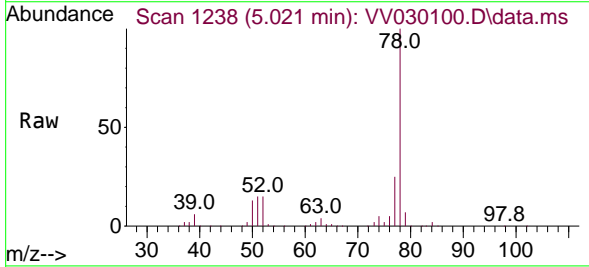


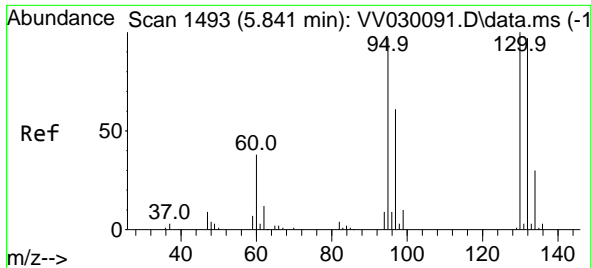
Tgt Ion: 117 Resp: 94660
 Ion Ratio Lower Upper
 117 100
 119 97.0 76.1 114.1



#33
 Benzene
 Concen: 5.442 ug/L
 RT: 5.021 min Scan# 1238
 Delta R.T. 0.003 min
 Lab File: VV030100.D
 Acq: 28 Feb 2023 15:32

Tgt Ion: 78 Resp: 245890



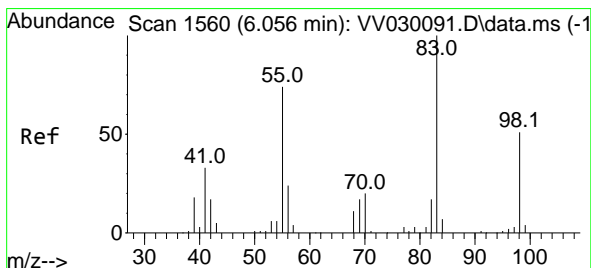
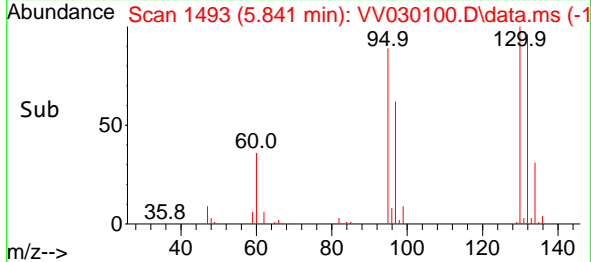
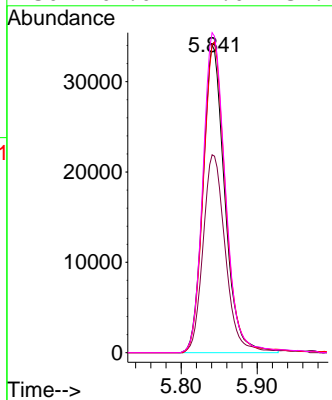
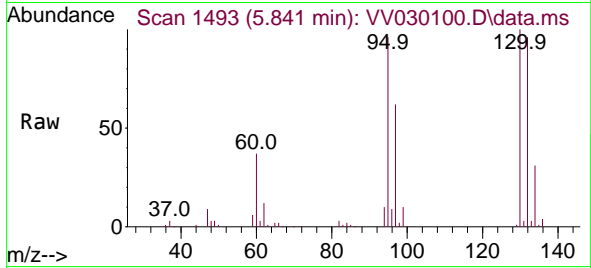


#34
 Trichloroethene
 Concen: 5.345 ug/L
 RT: 5.841 min Scan# 1493
 Delta R.T. -0.000 min
 Lab File: VV030100.D
 Acq: 28 Feb 2023 15:32

Instrument : MSVOA_V
 ClientSampleId : VSTD005287

Tgt Ion: 95 Resp: 67674

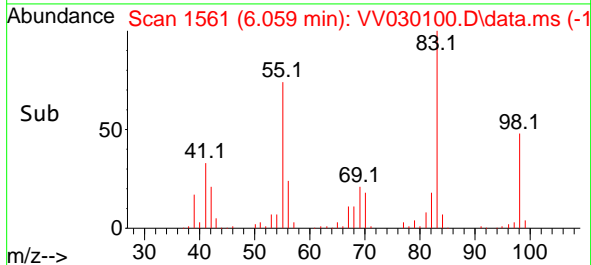
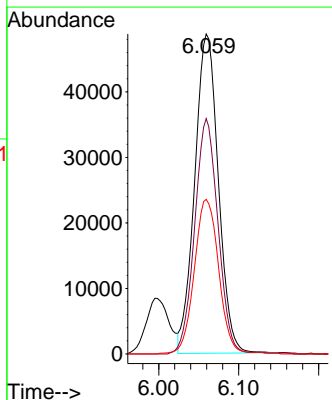
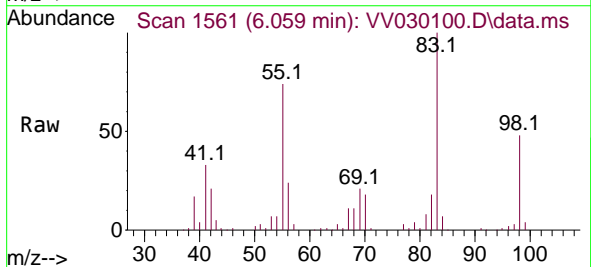
Ion	Ratio	Lower	Upper
95	100		
97	64.3	46.5	86.5
132	100.2	71.7	133.3
130	104.0	74.0	137.4

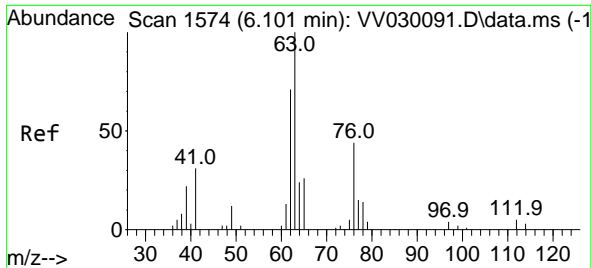


#35
 Methylcyclohexane
 Concen: 5.238 ug/L
 RT: 6.059 min Scan# 1561
 Delta R.T. 0.003 min
 Lab File: VV030100.D
 Acq: 28 Feb 2023 15:32

Tgt Ion: 83 Resp: 100371

Ion	Ratio	Lower	Upper
83	100		
55	72.7	57.6	86.4
98	50.0	38.8	58.2

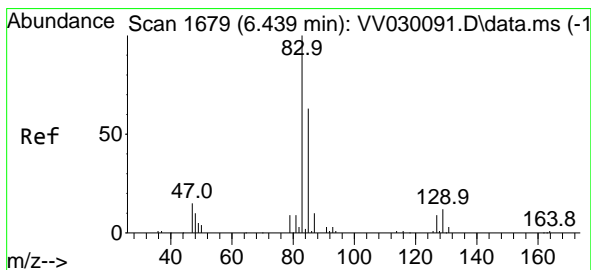
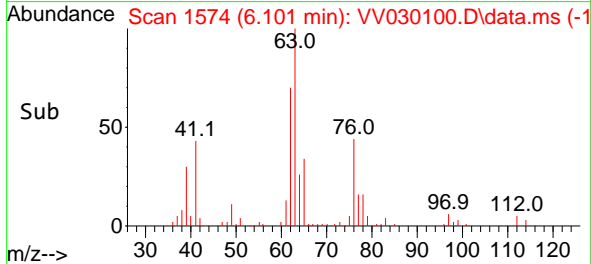
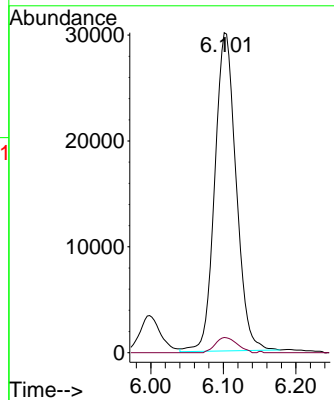
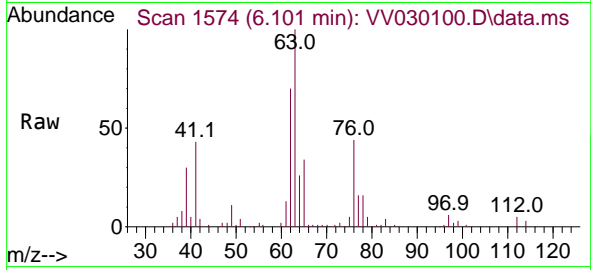




#37
 1,2-Dichloropropane
 Concen: 5.349 ug/L
 RT: 6.101 min Scan# 1111
 Delta R.T. -0.000 min
 Lab File: VV030100.D
 Acq: 28 Feb 2023 15:32

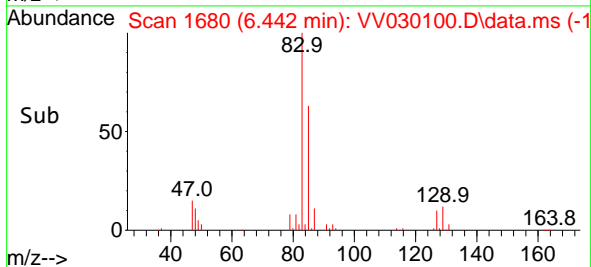
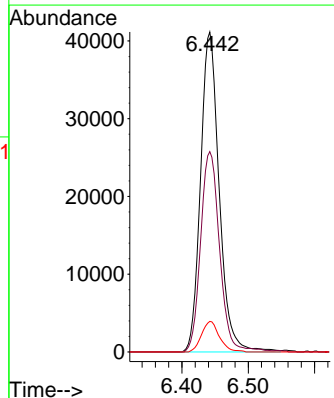
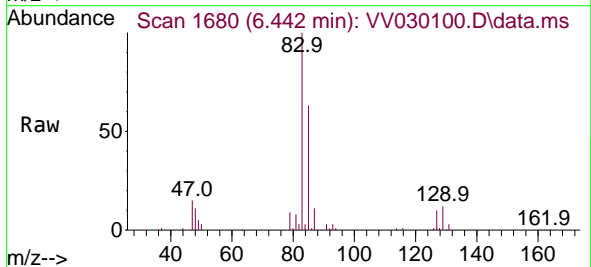
Instrument : MSVOA_V
 ClientSampleId : VSTD005287

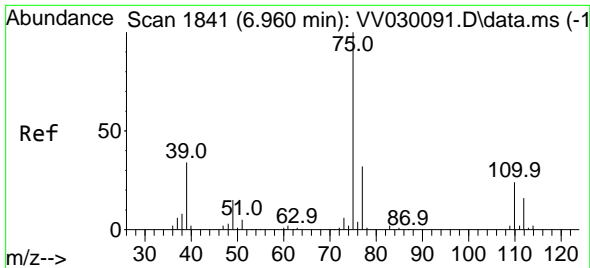
Tgt Ion: 63 Resp: 61484
 Ion Ratio Lower Upper
 63 100
 112 4.9 3.8 5.6



#38
 Bromodichloromethane
 Concen: 5.472 ug/L
 RT: 6.442 min Scan# 1680
 Delta R.T. 0.003 min
 Lab File: VV030100.D
 Acq: 28 Feb 2023 15:32

Tgt Ion: 83 Resp: 80298
 Ion Ratio Lower Upper
 83 100
 85 62.6 44.3 82.3
 127 9.6 7.2 10.8





#39
 cis-1,3-Dichloropropene
 Concen: 5.347 ug/L
 RT: 6.963 min Scan# 1841
 Delta R.T. 0.003 min
 Lab File: VV030100.D
 Acq: 28 Feb 2023 15:32

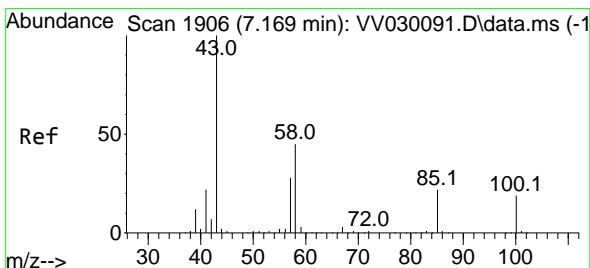
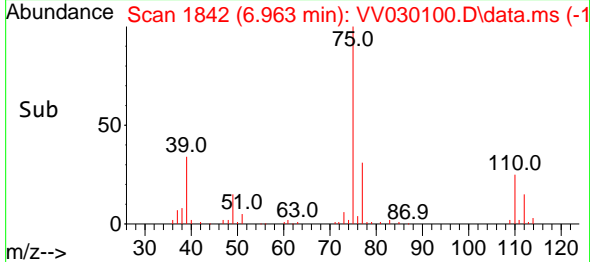
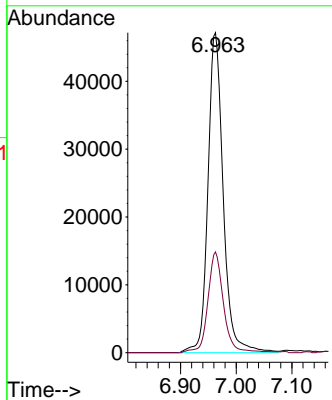
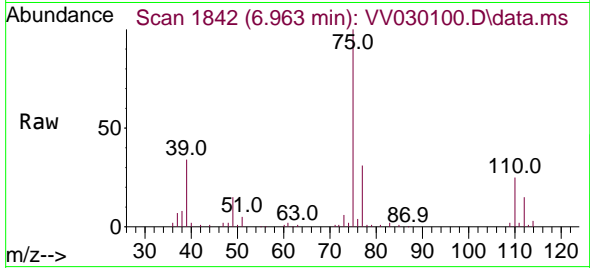
Instrument :

MSVOA_V

ClientSampleId :

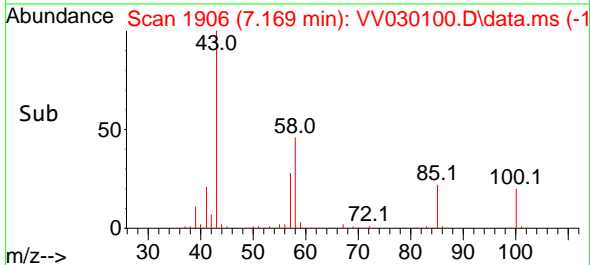
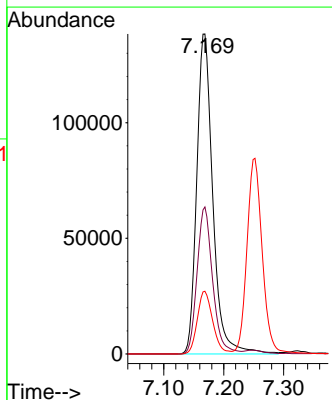
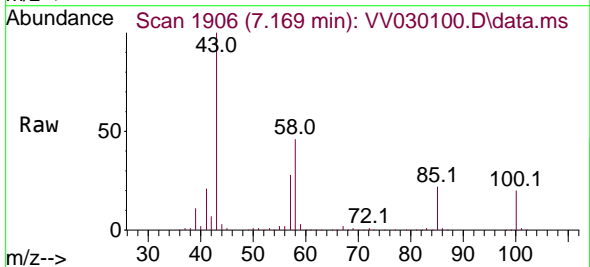
VSTD005287

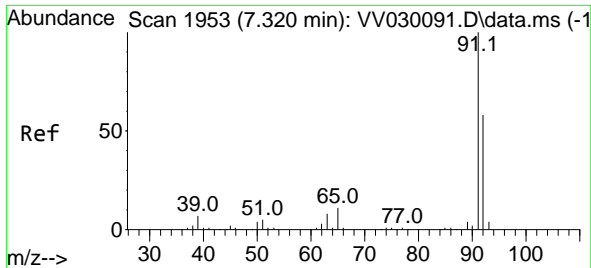
Tgt Ion: 75 Resp: 89975
 Ion Ratio Lower Upper
 75 100
 77 31.5 22.3 41.3



#40
 4-Methyl-2-pentanone
 Concen: 54.528 ug/L
 RT: 7.169 min Scan# 1906
 Delta R.T. -0.000 min
 Lab File: VV030100.D
 Acq: 28 Feb 2023 15:32

Tgt Ion: 43 Resp: 258632
 Ion Ratio Lower Upper
 43 100
 58 44.4 35.3 52.9
 100 18.8 14.7 22.1

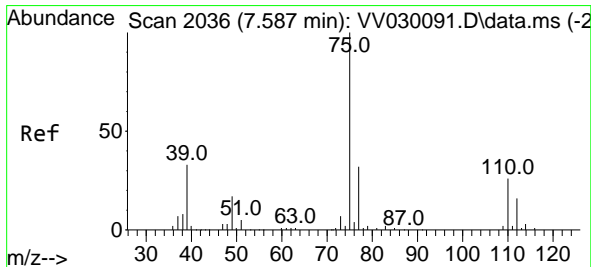
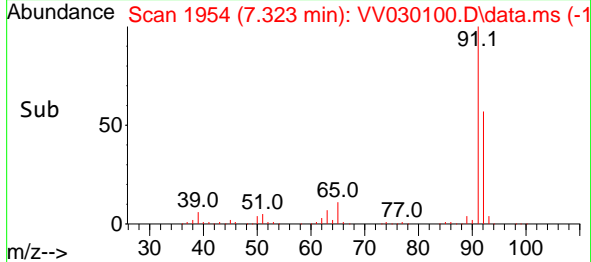
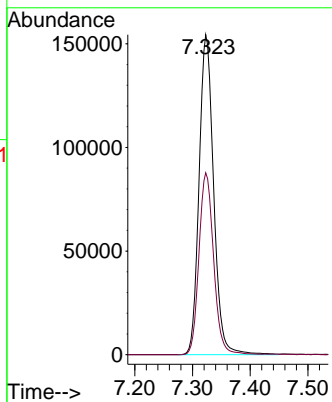
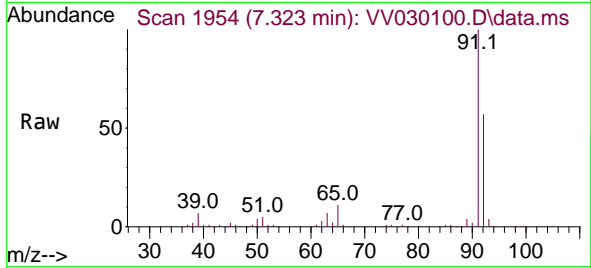




#42
 Toluene
 Concen: 5.527 ug/L
 RT: 7.323 min Scan# 1954
 Delta R.T. 0.003 min
 Lab File: VV030100.D
 Acq: 28 Feb 2023 15:32

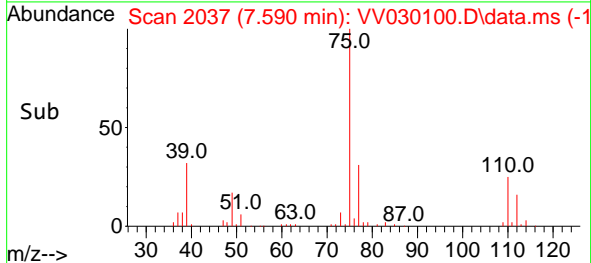
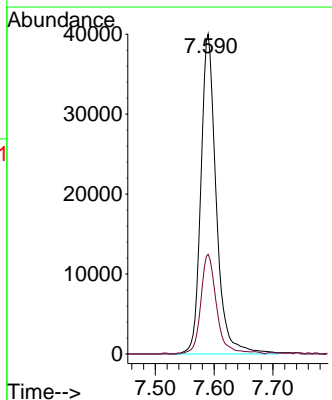
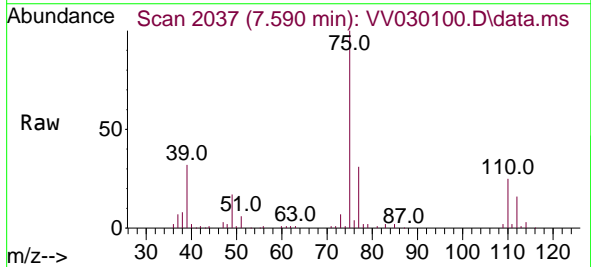
Instrument : MSVOA_V
 ClientSampleId : VSTD005287

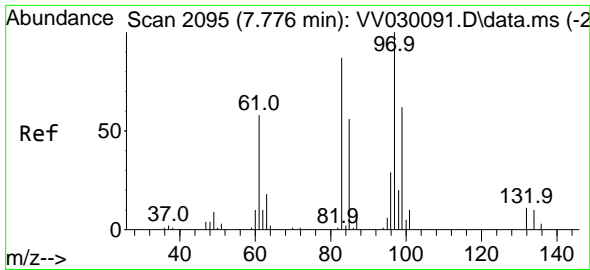
Tgt Ion: 91 Resp: 270479
 Ion Ratio Lower Upper
 91 100
 92 56.8 39.6 73.6



#44
 trans-1,3-Dichloropropene
 Concen: 5.526 ug/L
 RT: 7.590 min Scan# 2037
 Delta R.T. 0.003 min
 Lab File: VV030100.D
 Acq: 28 Feb 2023 15:32

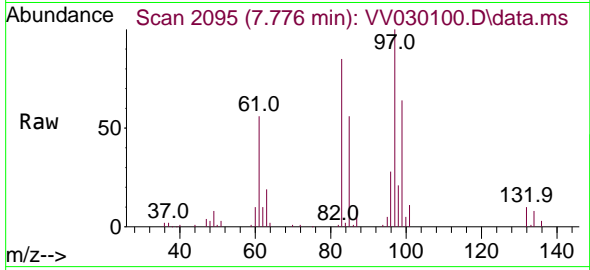
Tgt Ion: 75 Resp: 72580
 Ion Ratio Lower Upper
 75 100
 77 31.2 22.1 41.1





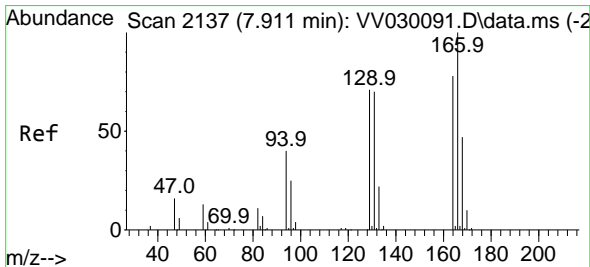
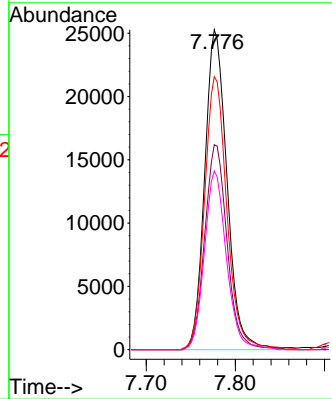
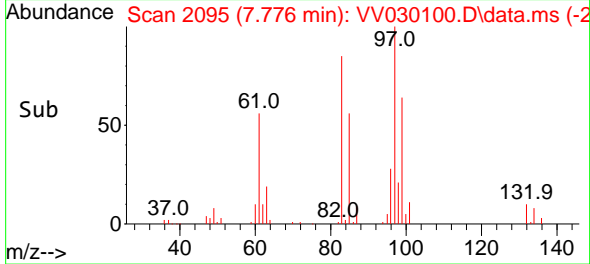
#45
 1,1,2-Trichloroethane
 Concen: 5.333 ug/L
 RT: 7.776 min Scan# 2095
 Delta R.T. -0.000 min
 Lab File: VV030100.D
 Acq: 28 Feb 2023 15:32

Instrument : MSVOA_V
 ClientSampleId : VSTD005287

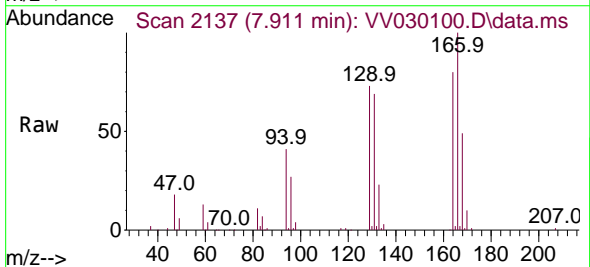


Tgt Ion: 97 Resp: 43861

Ion	Ratio	Lower	Upper
97	100		
99	64.1	42.6	79.2
83	85.3	57.7	107.3
85	55.9	38.9	72.2

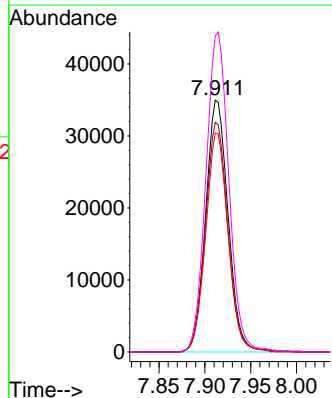
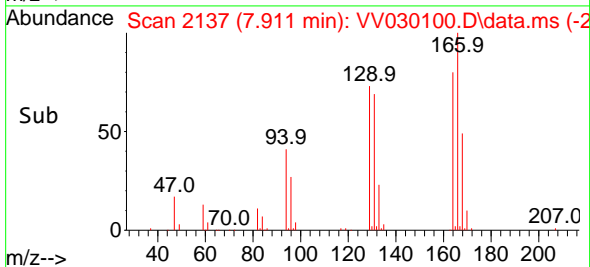


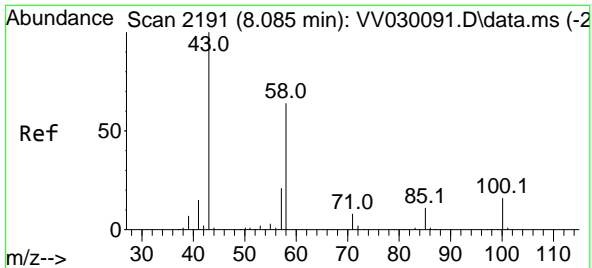
#47
 Tetrachloroethene
 Concen: 5.482 ug/L
 RT: 7.911 min Scan# 2137
 Delta R.T. -0.000 min
 Lab File: VV030100.D
 Acq: 28 Feb 2023 15:32



Tgt Ion: 164 Resp: 59577

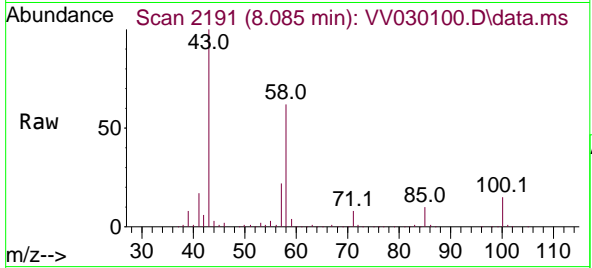
Ion	Ratio	Lower	Upper
164	100		
129	91.2	63.6	118.2
131	87.0	61.7	114.7
166	125.6	90.8	168.6





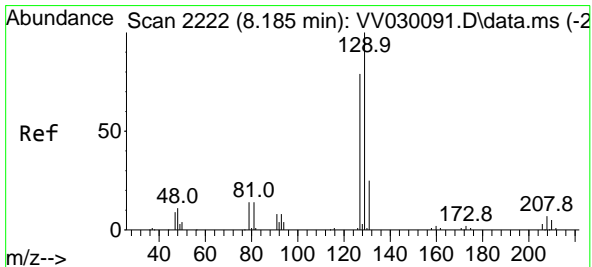
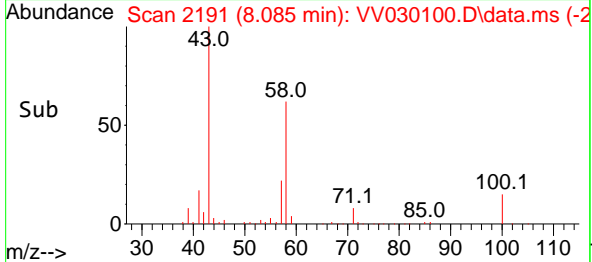
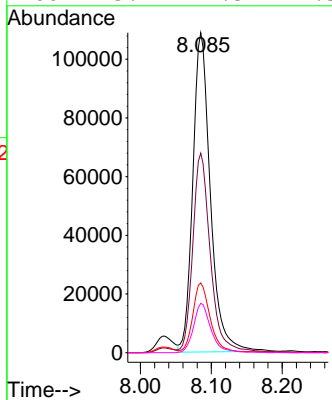
#48
 2-Hexanone
 Concen: 55.201 ug/L
 RT: 8.085 min Scan# 2191
 Delta R.T. -0.000 min
 Lab File: VV030100.D
 Acq: 28 Feb 2023 15:32

Instrument : MSVOA_V
 ClientSampleId : VSTD005287



Tgt Ion: 43 Resp: 187440

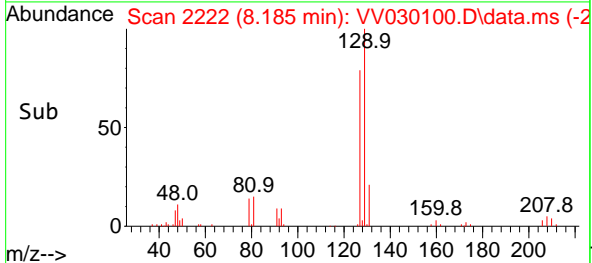
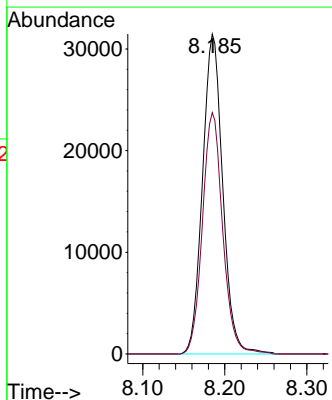
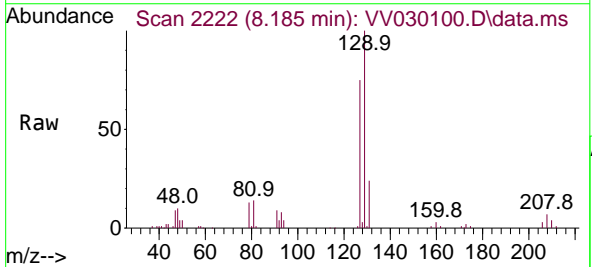
Ion	Ratio	Lower	Upper
43	100		
58	62.7	49.8	74.8
57	21.4	16.6	24.8
100	15.2	11.5	17.3

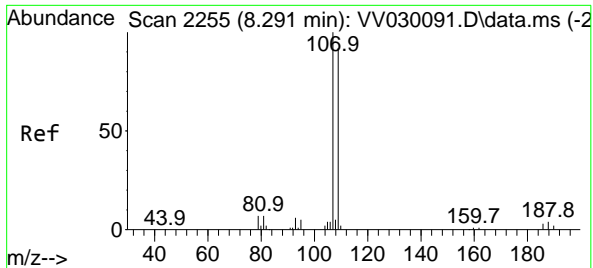


#49
 Dibromochloromethane
 Concen: 5.580 ug/L
 RT: 8.185 min Scan# 2222
 Delta R.T. -0.000 min
 Lab File: VV030100.D
 Acq: 28 Feb 2023 15:32

Tgt Ion: 129 Resp: 53702

Ion	Ratio	Lower	Upper
129	100		
127	75.4	54.7	101.5





#50
 1,2-Dibromoethane
 Concen: 5.414 ug/L
 RT: 8.291 min Scan# 21
 Delta R.T. -0.000 min
 Lab File: VV030100.D
 Acq: 28 Feb 2023 15:32

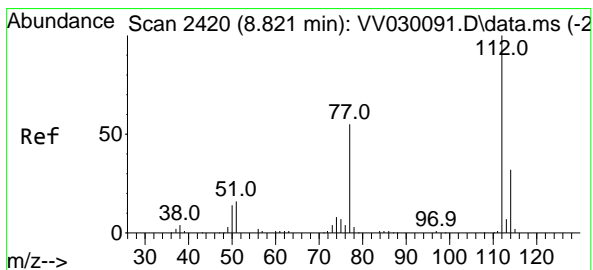
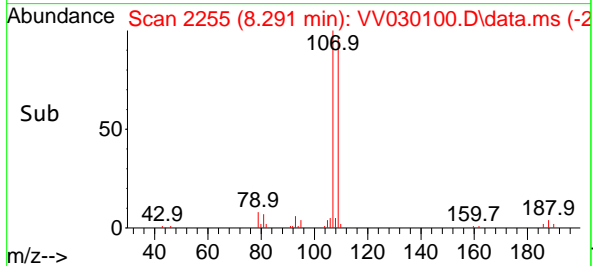
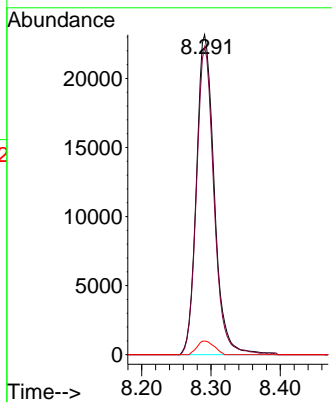
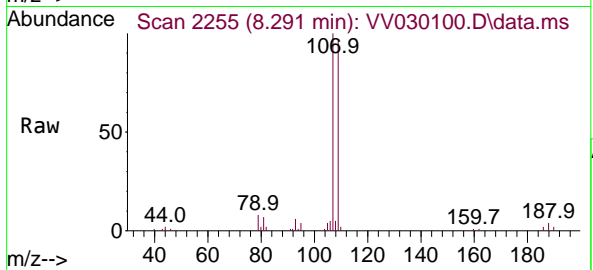
Instrument :

MSVOA_V

ClientSampleId :

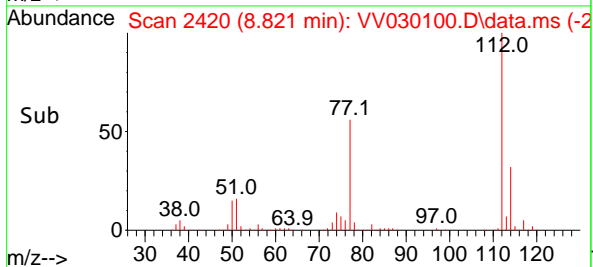
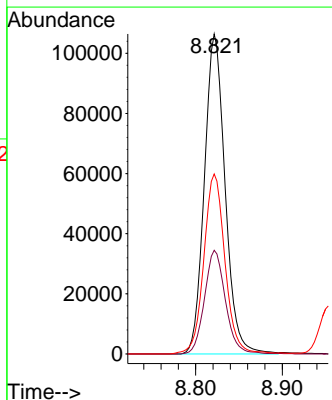
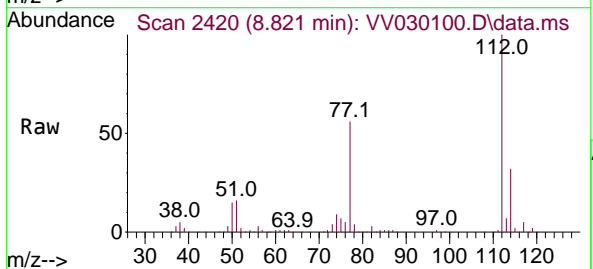
VSTD005287

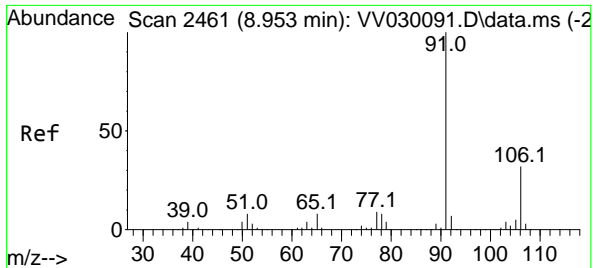
Tgt Ion:107 Resp: 41545
 Ion Ratio Lower Upper
 107 100
 109 96.1 63.3 117.7
 188 4.3 3.0 4.6



#51
 Chlorobenzene
 Concen: 5.368 ug/L
 RT: 8.821 min Scan# 2420
 Delta R.T. -0.000 min
 Lab File: VV030100.D
 Acq: 28 Feb 2023 15:32

Tgt Ion:112 Resp: 177152
 Ion Ratio Lower Upper
 112 100
 114 32.4 22.5 41.7
 77 56.2 45.3 67.9

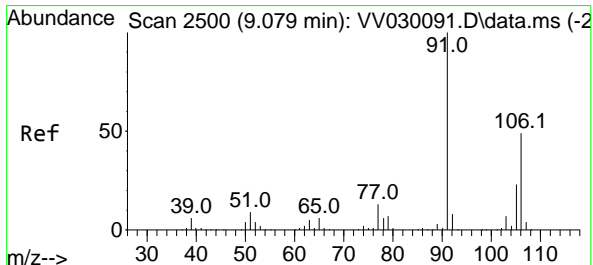
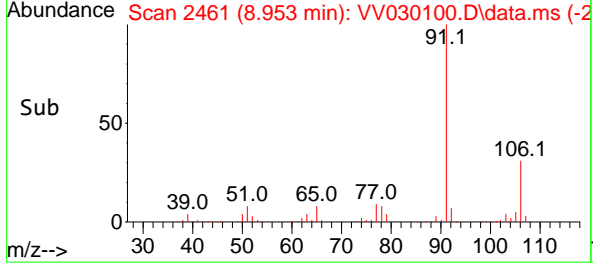
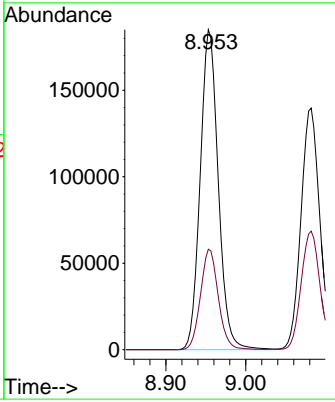
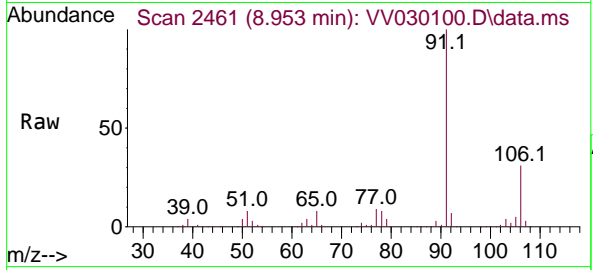




#52
 Ethylbenzene
 Concen: 5.466 ug/L
 RT: 8.953 min Scan# 2461
 Delta R.T. -0.000 min
 Lab File: VV030100.D
 Acq: 28 Feb 2023 15:32

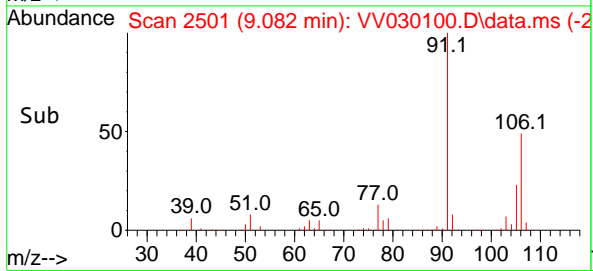
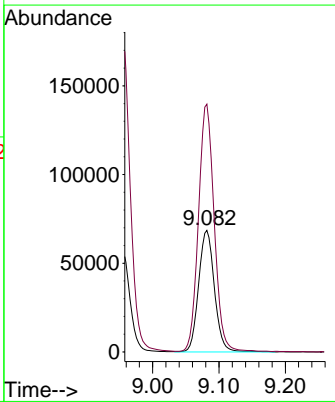
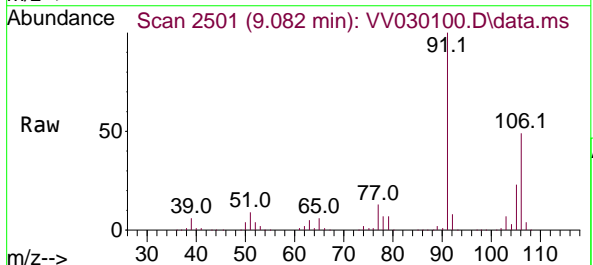
Instrument : MSVOA_V
 ClientSampleId : VSTD005287

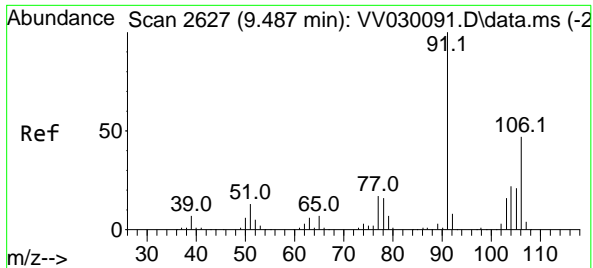
Tgt Ion: 91 Resp: 291090
 Ion Ratio Lower Upper
 91 100
 106 31.4 22.0 40.8



#53
 m,p-Xylene
 Concen: 5.561 ug/L
 RT: 9.082 min Scan# 2501
 Delta R.T. 0.003 min
 Lab File: VV030100.D
 Acq: 28 Feb 2023 15:32

Tgt Ion: 106 Resp: 113822
 Ion Ratio Lower Upper
 106 100
 91 203.8 142.5 264.7

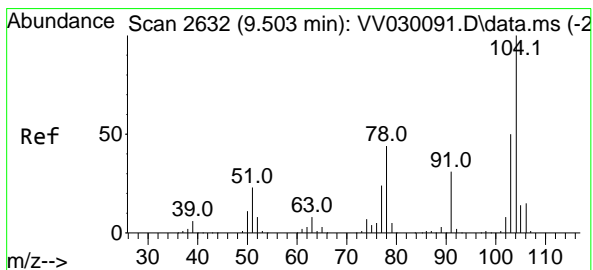
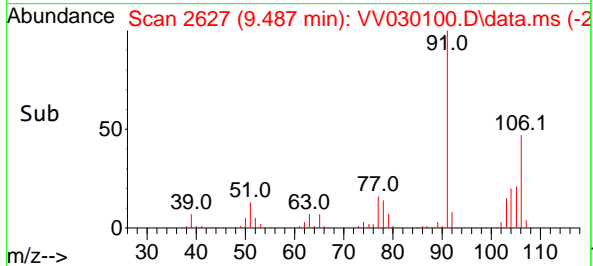
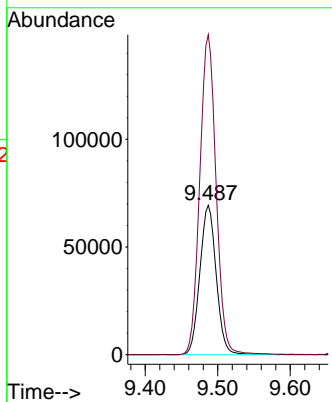
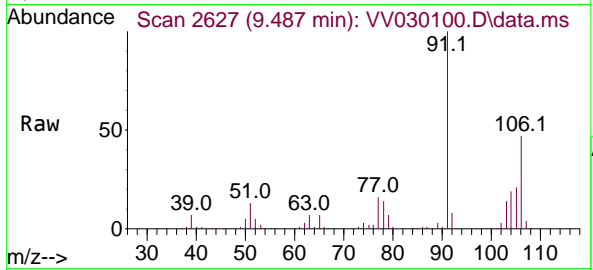




#54
 o-Xylene
 Concen: 5.549 ug/L
 RT: 9.487 min Scan# 2627
 Delta R.T. -0.000 min
 Lab File: VV030100.D
 Acq: 28 Feb 2023 15:32

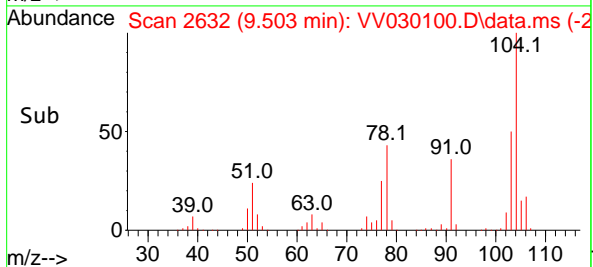
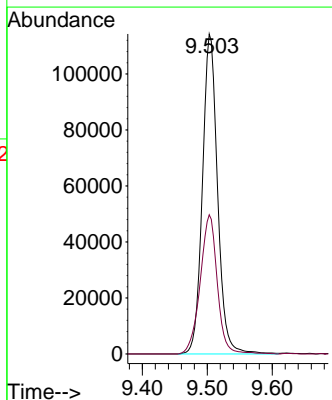
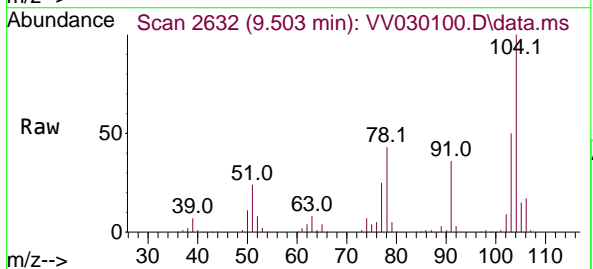
Instrument : MSVOA_V
 ClientSampleId : VSTD005287

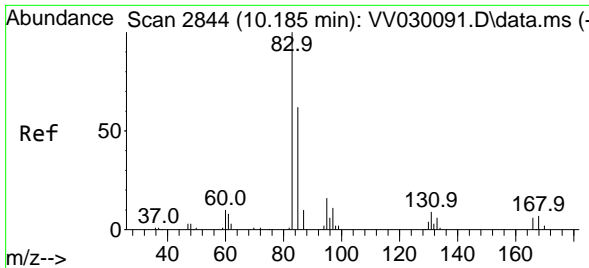
Tgt Ion:106 Resp: 108495
 Ion Ratio Lower Upper
 106 100
 91 214.1 148.8 276.4



#55
 Styrene
 Concen: 5.714 ug/L
 RT: 9.503 min Scan# 2632
 Delta R.T. -0.000 min
 Lab File: VV030100.D
 Acq: 28 Feb 2023 15:32

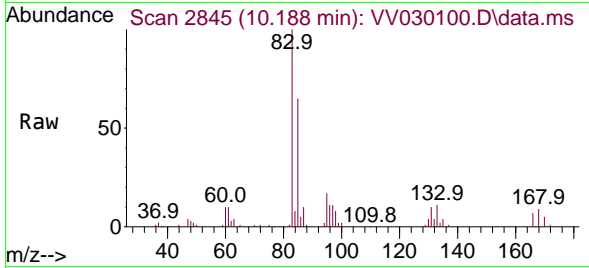
Tgt Ion:104 Resp: 185784
 Ion Ratio Lower Upper
 104 100
 78 43.5 31.1 57.9



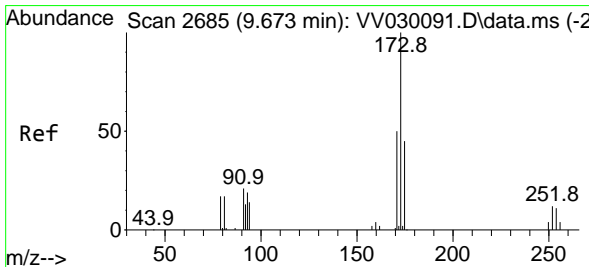
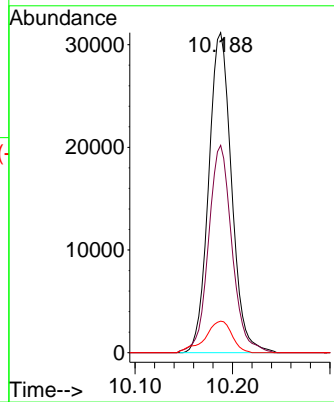
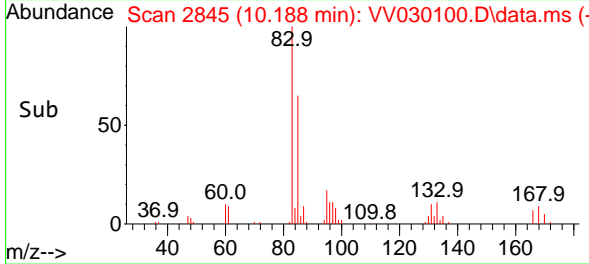


#57
 1,1,2,2-Tetrachloroethane
 Concen: 5.532 ug/L
 RT: 10.188 min Scan# 2845
 Delta R.T. 0.003 min
 Lab File: VV030100.D
 Acq: 28 Feb 2023 15:32

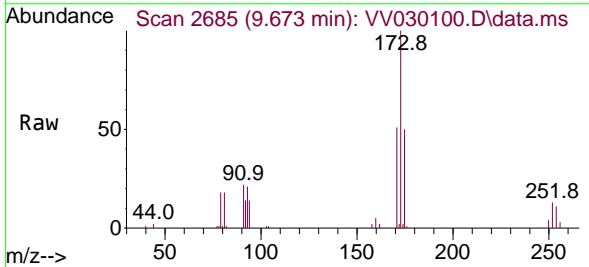
Instrument : MSVOA_V
 ClientSampleId : VSTD005287



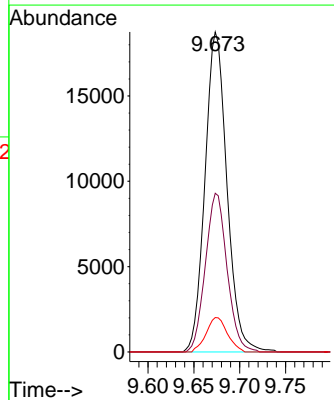
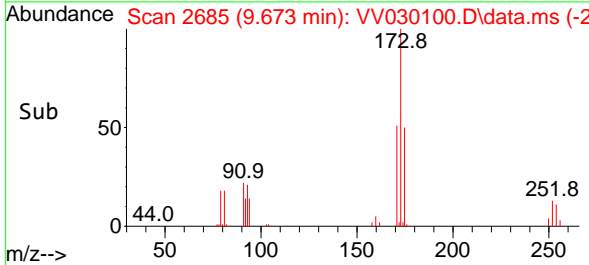
Tgt Ion: 83 Resp: 50890
 Ion Ratio Lower Upper
 83 100
 85 64.8 45.0 83.6
 131 9.8 8.2 12.4

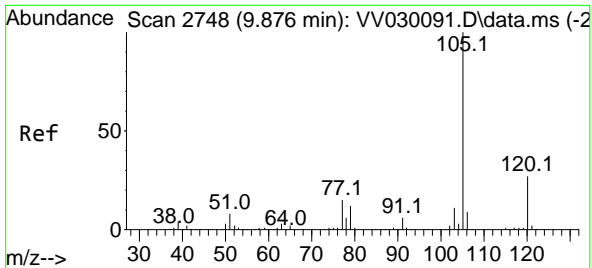


#59
 Bromoform
 Concen: 5.392 ug/L
 RT: 9.673 min Scan# 2685
 Delta R.T. -0.000 min
 Lab File: VV030100.D
 Acq: 28 Feb 2023 15:32



Tgt Ion: 173 Resp: 31251
 Ion Ratio Lower Upper
 173 100
 175 48.9 38.5 57.7
 254 10.4 8.6 13.0



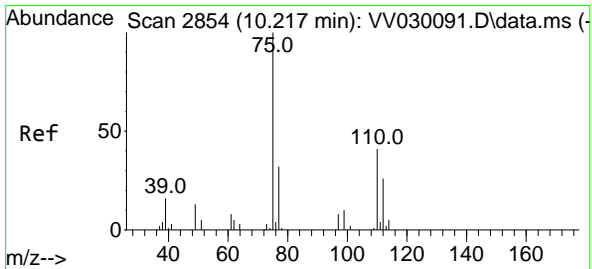
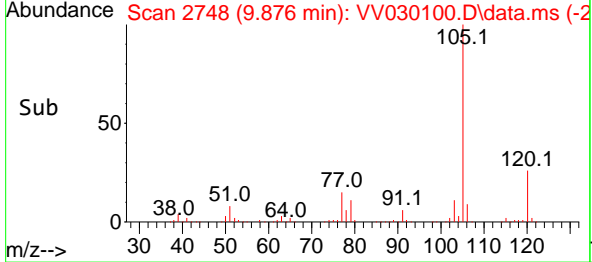
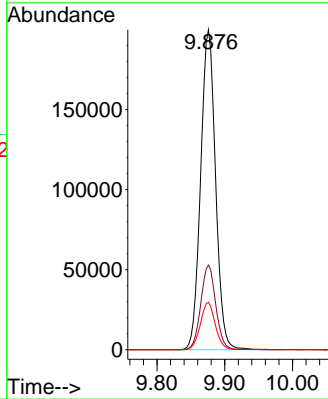
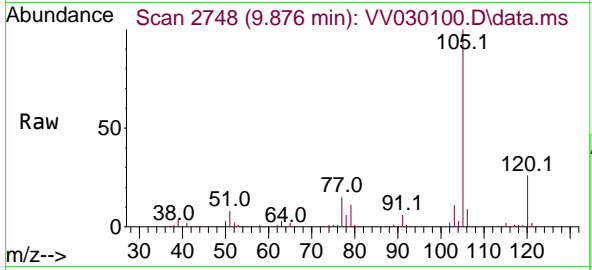


#60
 Isopropylbenzene
 Concen: 5.490 ug/L
 RT: 9.876 min Scan# 21
 Delta R.T. -0.000 min
 Lab File: VV030100.D
 Acq: 28 Feb 2023 15:32

Instrument :
 MSVOA_V
 ClientSampleId :
 VSTD005287

Tgt Ion: 105 Resp: 305460

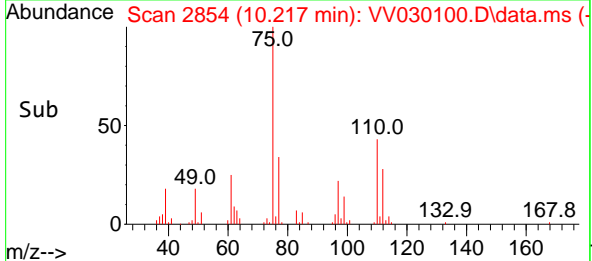
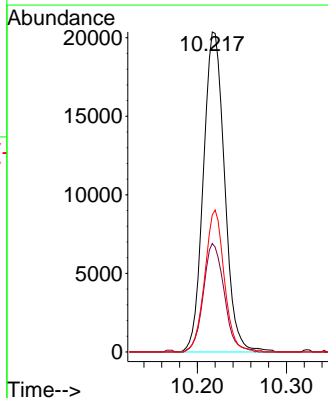
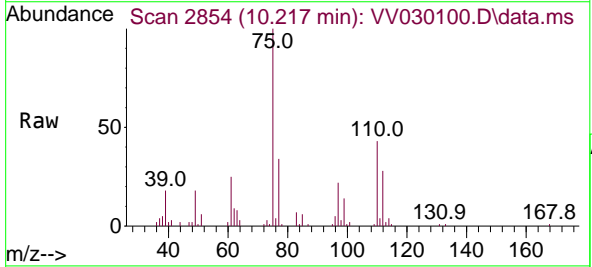
Ion	Ratio	Lower	Upper
105	100		
120	26.5	21.4	32.0
77	14.8	12.1	18.1

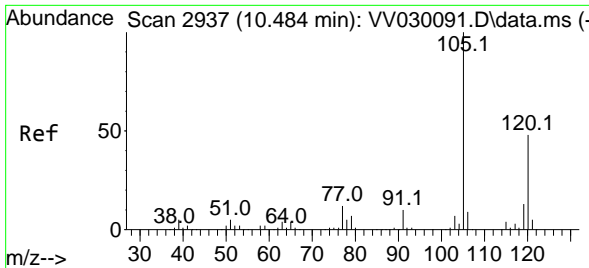


#61
 1,2,3-Trichloropropane
 Concen: 5.206 ug/L
 RT: 10.217 min Scan# 2854
 Delta R.T. -0.000 min
 Lab File: VV030100.D
 Acq: 28 Feb 2023 15:32

Tgt Ion: 75 Resp: 33693

Ion	Ratio	Lower	Upper
75	100		
77	33.4	26.5	39.7
110	40.7	31.8	47.6

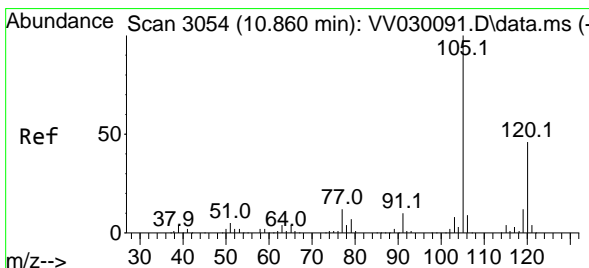
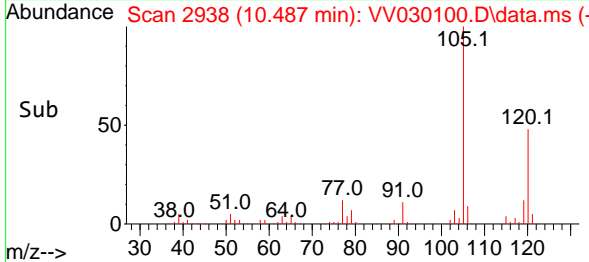
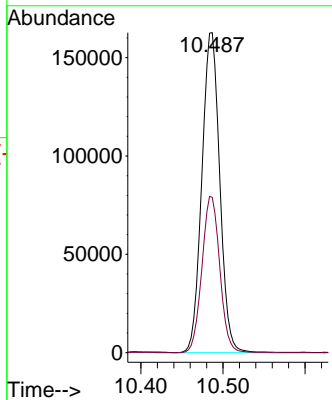
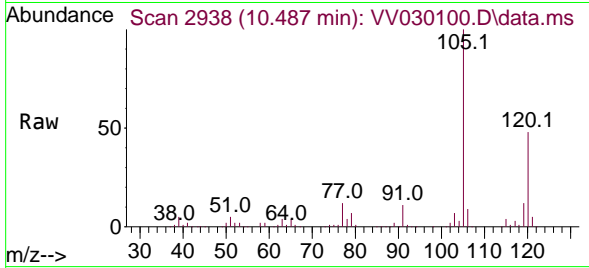




#62
 1,3,5-Trimethylbenzene
 Concen: 5.408 ug/L
 RT: 10.487 min Scan# 2937
 Delta R.T. 0.003 min
 Lab File: VV030100.D
 Acq: 28 Feb 2023 15:32

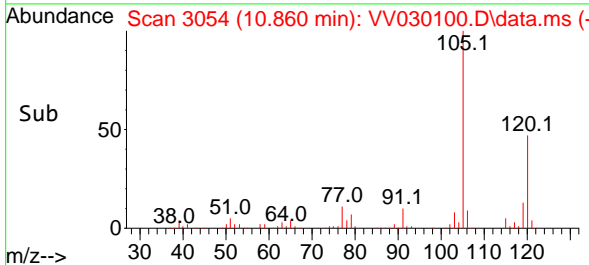
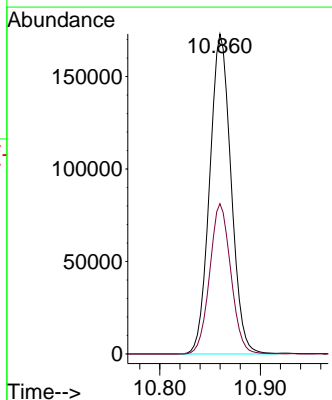
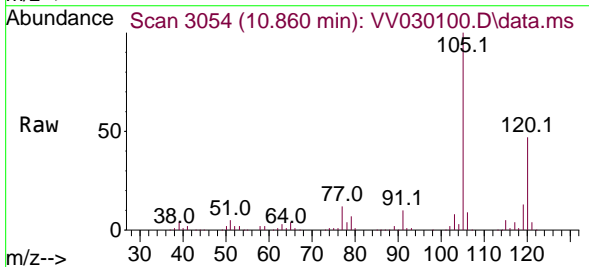
Instrument : MSVOA_V
 ClientSampleId : VSTD005287

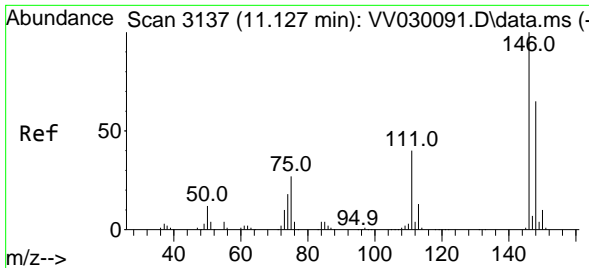
Tgt Ion:105 Resp: 247186
 Ion Ratio Lower Upper
 105 100
 120 48.7 39.6 59.4



#63
 1,2,4-Trimethylbenzene
 Concen: 5.470 ug/L
 RT: 10.860 min Scan# 3054
 Delta R.T. -0.000 min
 Lab File: VV030100.D
 Acq: 28 Feb 2023 15:32

Tgt Ion:105 Resp: 255770
 Ion Ratio Lower Upper
 105 100
 120 46.4 36.2 54.4



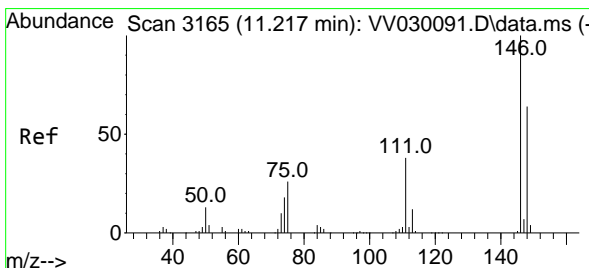
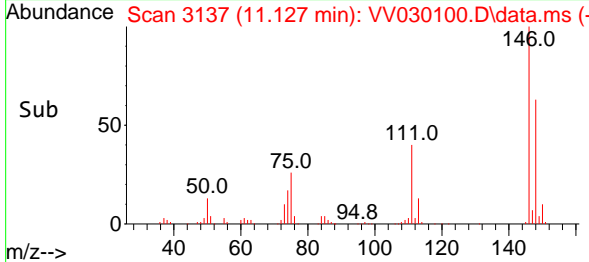
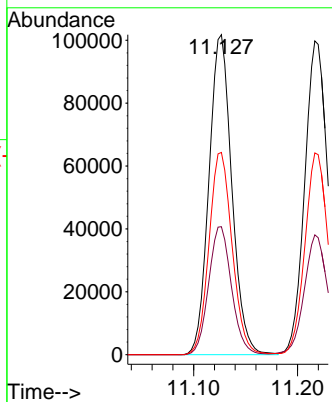
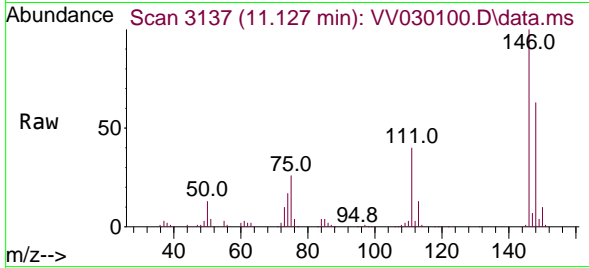


#64
 1,3-Dichlorobenzene
 Concen: 5.374 ug/L
 RT: 11.127 min Scan# 3137
 Delta R.T. -0.000 min
 Lab File: VV030100.D
 Acq: 28 Feb 2023 15:32

Instrument : MSVOA_V
 ClientSampleId : VSTD005287

Tgt Ion:146 Resp: 155696

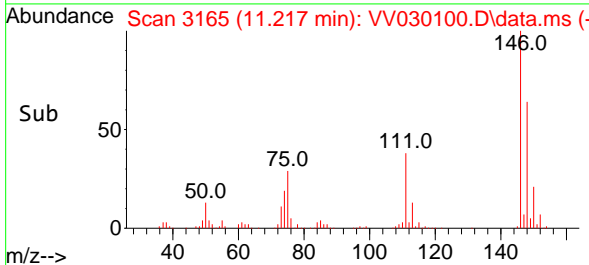
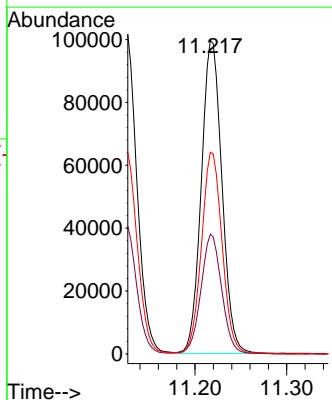
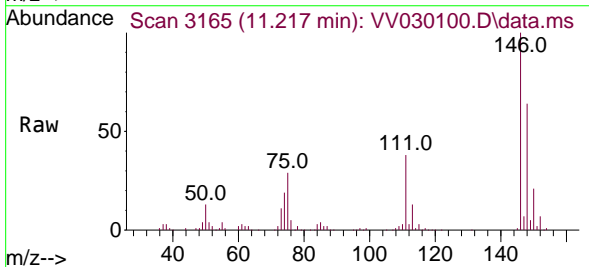
Ion	Ratio	Lower	Upper
146	100		
111	40.0	27.7	51.5
148	63.2	44.5	82.7

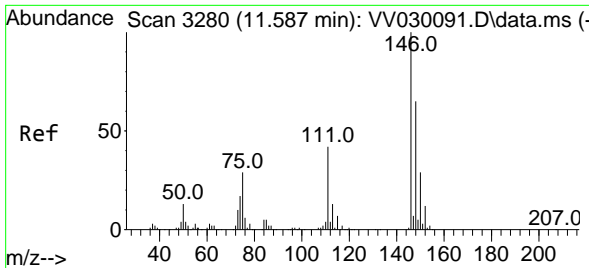


#65
 1,4-Dichlorobenzene
 Concen: 5.319 ug/L
 RT: 11.217 min Scan# 3165
 Delta R.T. -0.000 min
 Lab File: VV030100.D
 Acq: 28 Feb 2023 15:32

Tgt Ion:146 Resp: 155473

Ion	Ratio	Lower	Upper
146	100		
111	38.2	27.4	51.0
148	64.3	44.1	81.9

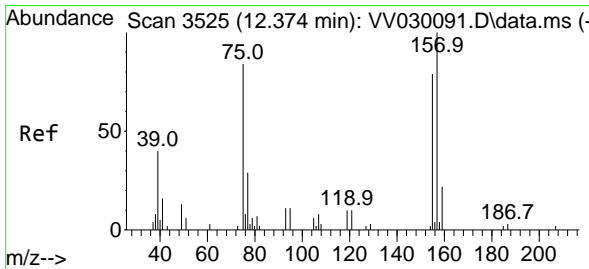
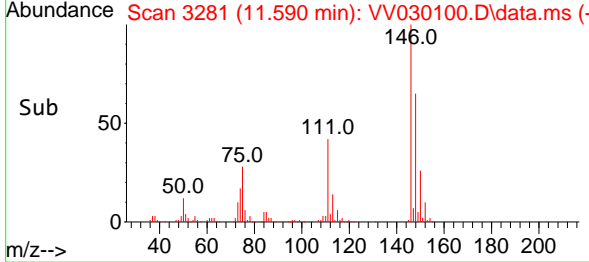
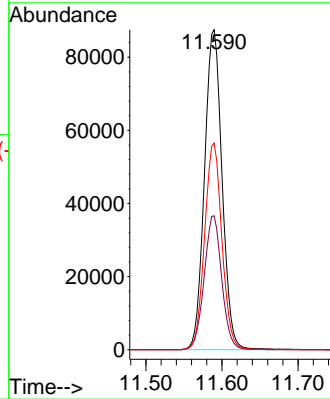
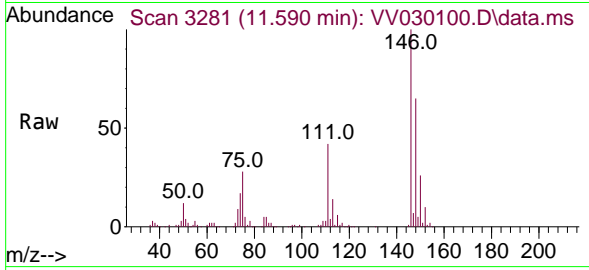




#67
 1,2-Dichlorobenzene
 Concen: 5.493 ug/L
 RT: 11.590 min Scan# 31
 Delta R.T. 0.003 min
 Lab File: VV030100.D
 Acq: 28 Feb 2023 15:32

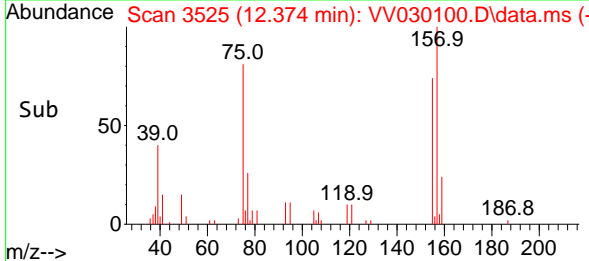
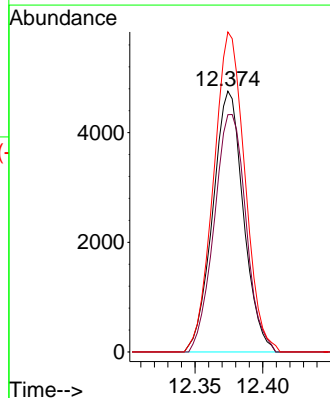
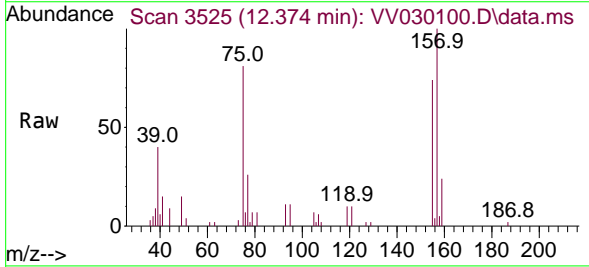
Instrument :
 MSVOA_V
 ClientSampleId :
 VSTD005287

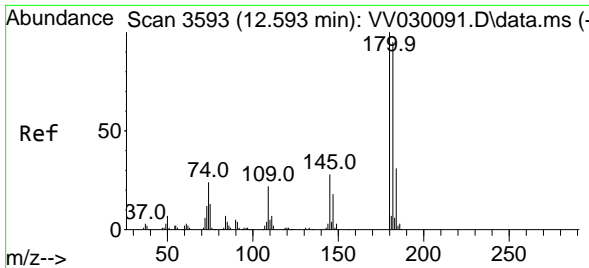
Tgt Ion:146 Resp: 140520
 Ion Ratio Lower Upper
 146 100
 111 41.8 33.5 50.3
 148 64.5 51.3 76.9



#68
 1,2-Dibromo-3-chloropropane
 Concen: 5.195 ug/L
 RT: 12.374 min Scan# 3525
 Delta R.T. -0.000 min
 Lab File: VV030100.D
 Acq: 28 Feb 2023 15:32

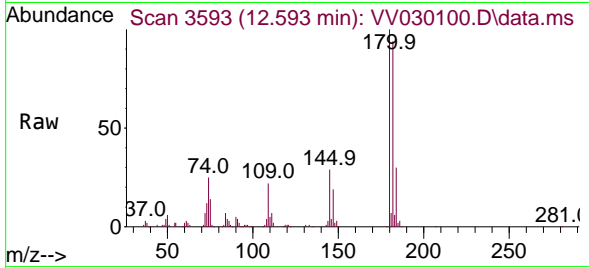
Tgt Ion: 75 Resp: 7509
 Ion Ratio Lower Upper
 75 100
 155 91.0 79.1 118.7
 157 122.7 95.5 143.3





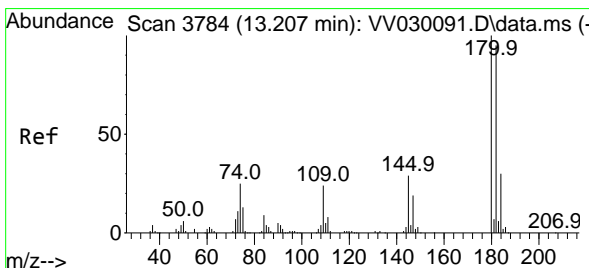
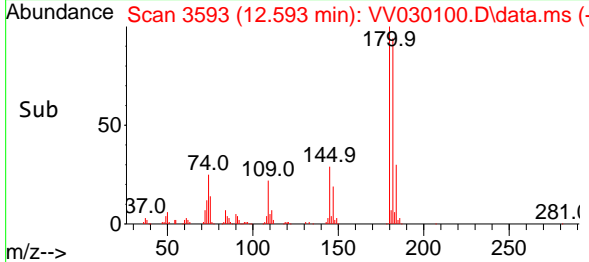
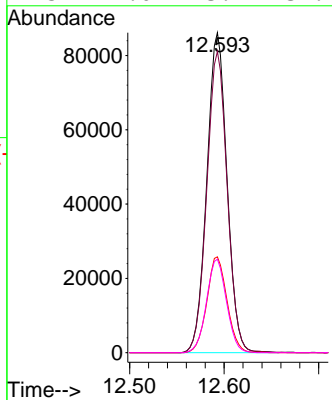
#69
 1,3,5-Trichlorobenzene
 Concen: 5.356 ug/L
 RT: 12.593 min Scan# 31
 Delta R.T. -0.000 min
 Lab File: VV030100.D
 Acq: 28 Feb 2023 15:32

Instrument : MSVOA_V
 ClientSampleId : VSTD005287



Tgt Ion:180 Resp: 127557

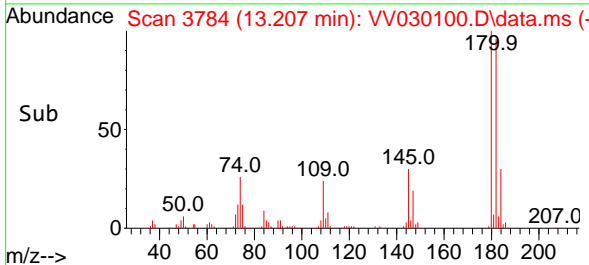
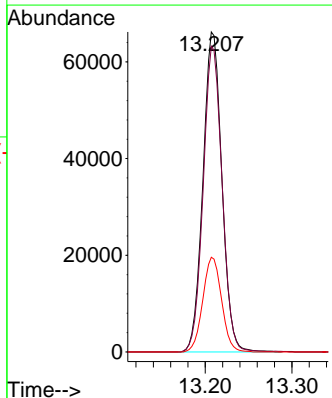
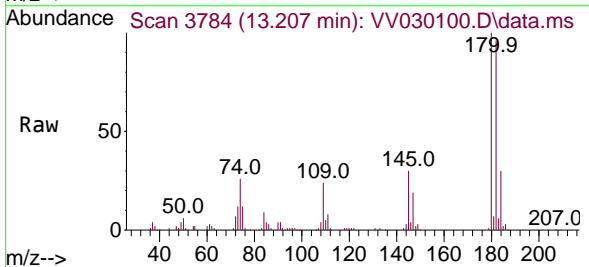
Ion	Ratio	Lower	Upper
180	100		
182	95.4	76.5	114.7
184	30.1	24.3	36.5
145	29.0	23.1	34.7

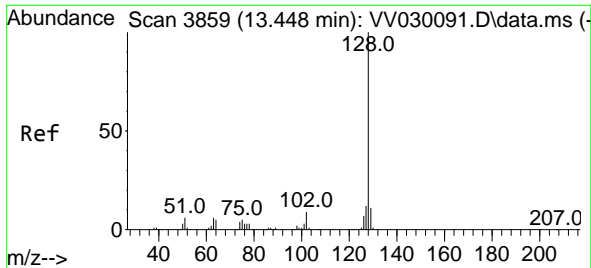


#70
 1,2,4-trichlorobenzene
 Concen: 5.210 ug/L
 RT: 13.207 min Scan# 3784
 Delta R.T. -0.000 min
 Lab File: VV030100.D
 Acq: 28 Feb 2023 15:32

Tgt Ion:180 Resp: 100534

Ion	Ratio	Lower	Upper
180	100		
182	95.3	77.3	115.9
145	29.3	23.1	34.7

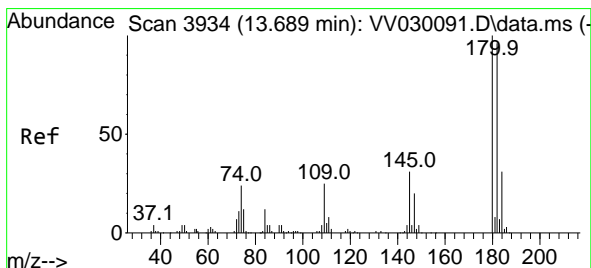
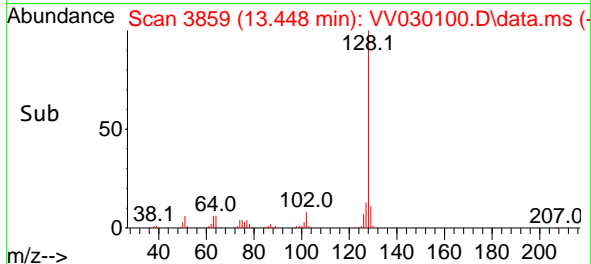
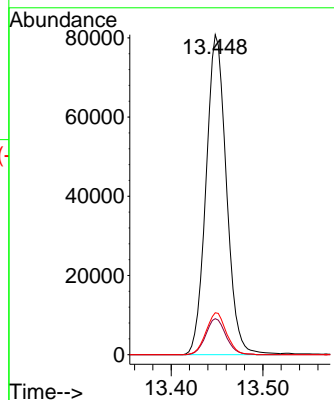
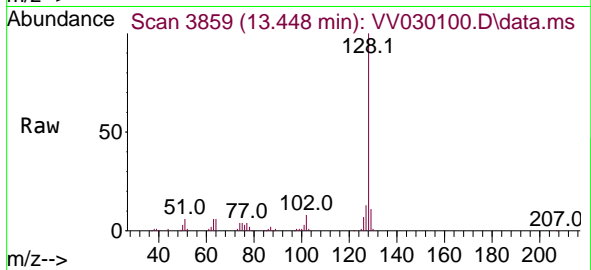




#71
 Naphthalene
 Concen: 4.950 ug/L
 RT: 13.448 min Scan# 3859
 Delta R.T. -0.000 min
 Lab File: VV030100.D
 Acq: 28 Feb 2023 15:32

Instrument : MSVOA_V
 ClientSampleId : VSTD005287

Tgt Ion	Resp	Lower	Upper
128	124817		
129	11.2	8.6	13.0
127	13.1	10.4	15.6



#72
 1,2,3-Trichlorobenzene
 Concen: 5.168 ug/L
 RT: 13.689 min Scan# 3934
 Delta R.T. -0.000 min
 Lab File: VV030100.D
 Acq: 28 Feb 2023 15:32

Tgt Ion	Resp	Lower	Upper
180	82083		
182	96.6	76.2	114.2
145	31.0	25.1	37.7

