

Data File : VV009535.D  
 Acq On : 07 Mar 2019 17:52  
 Operator : SY/MD  
 Sample : K1789-02  
 Misc : 6.33G/10ML/MSVOA\_V/SOIL  
 ALS Vial : 1 Sample Multiplier: 1

Instrument :  
 MSVOA\_V  
 ClientSampleID :  
 BF0N8

Quant Time: Mar 08 03:06:29 2019  
 Quant Method : Z:\VOASRV\HPCHEM1\MSVOA\_V\METHOD\SOM2VLM030519S.M  
 Quant Title : VOC Analysis  
 QLast Update : Fri Mar 08 03:01:51 2019  
 Response via : Initial Calibration

Internal Standards	R.T.	QIon	Response	Conc	Units	Dev(Min)
1) 1,4-Difluorobenzene	5.66	114	125658	25.00	ug/L	0.00
28) Chlorobenzene-d5	8.90	117	122311	25.00	ug/L	0.00
60) 1,4-Dichlorobenzene-d4	11.30	152	53876	25.00	ug/L	0.00

System Monitoring Compounds

4) Vinyl Chloride-d3	1.32	65	29311	19.38	ug/L	0.00
Spiked Amount	25.000	Range	30 - 150	Recovery	=	77.52%
7) Chloroethane-d5	1.57	69	29879	13.66	ug/L	0.00
Spiked Amount	25.000	Range	30 - 150	Recovery	=	54.64%
10) 1,1-Dichloroethene-d2	2.12	63	65473	16.63	ug/L	0.00
Spiked Amount	25.000	Range	45 - 110	Recovery	=	66.52%
20) 2-Butanone-d5	3.93	46	26770	51.93	ug/L	0.00
Spiked Amount	50.000	Range	20 - 135	Recovery	=	103.86%
24) Chloroform-d	4.40	84	63892	21.34	ug/L	0.00
Spiked Amount	25.000	Range	40 - 150	Recovery	=	85.36%
26) 1,2-Dichloroethane-d4	5.08	65	44804	26.31	ug/L	0.00
Spiked Amount	25.000	Range	70 - 130	Recovery	=	105.24%
29) Benzene-d6	5.10	84	145090	23.95	ug/L	0.00
Spiked Amount	25.000	Range	20 - 135	Recovery	=	95.80%
33) 1,2-Dichloropropane-d6	6.12	67	45769	25.60	ug/L	0.00
Spiked Amount	25.000	Range	70 - 120	Recovery	=	102.40%
37) Toluene-d8	7.36	98	140862	23.85	ug/L	0.00
Spiked Amount	25.000	Range	30 - 130	Recovery	=	95.40%
38) trans-1,3-Dichloropropene-	7.66	79	20342	23.48	ug/L	0.00
Spiked Amount	25.000	Range	30 - 135	Recovery	=	93.92%
39) 2-Hexanone-d5	8.13	63	20850	49.98	ug/L	0.00
Spiked Amount	50.000	Range	20 - 135	Recovery	=	99.96%
48) 1,1,2,2-Tetrachloroethane-	10.26	84	49013	25.73	ug/L	0.00
Spiked Amount	25.000	Range	45 - 120	Recovery	=	102.92%
61) 1,2-Dichlorobenzene-d4	11.68	152	51446	26.16	ug/L	0.00
Spiked Amount	25.000	Range	75 - 120	Recovery	=	104.64%

Target Compounds

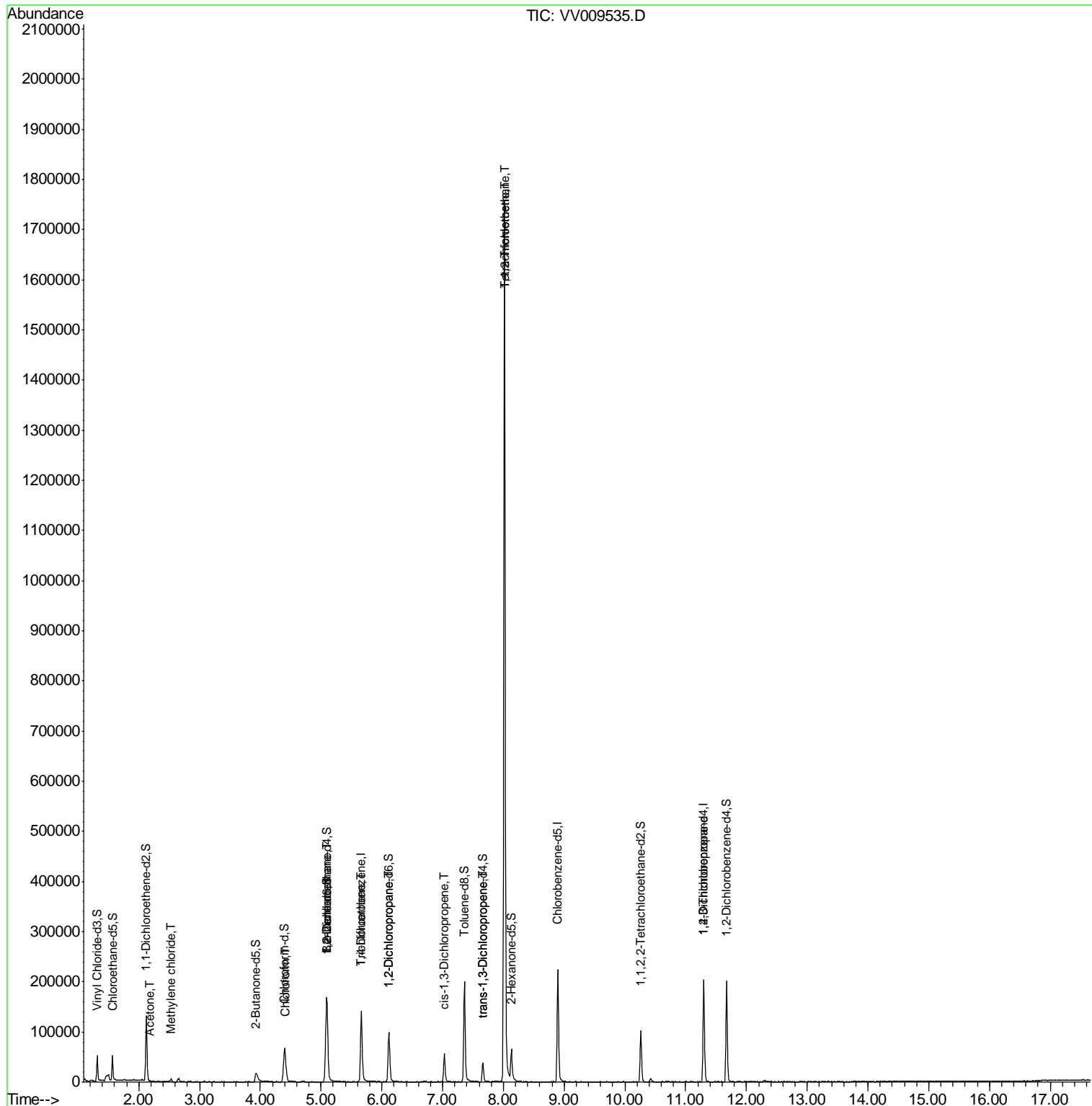
					Qvalue
13) Acetone	2.19	43	463	0.883	ug/L 94
16) Methylene chloride	2.53	84	2492	1.511	ug/L 93
25) Chloroform	4.43	83	10075	3.414	ug/L 90
27) 1,2-Dichloroethane	5.09	62	870	0.425	ug/L # 77
35) Trichloroethene	5.66	95	3808	2.097	ug/L # 6
40) 1,2-Dichloropropane	6.11	63	5596	3.434	ug/L # 89
42) cis-1,3-Dichloropropene	7.03	75	1710	0.676	ug/L # 81
45) trans-1,3-Dichloropropene	7.66	75	1120	0.507	ug/L # 75
46) 1,1,2-Trichloroethane	8.02	97	3566	2.634	ug/L # 29
47) Tetrachloroethene	8.02	164	351749	255.332	ug/L 95
59) 1,2,3-Trichloropropane	11.30	75	7691	5.581	ug/L 96

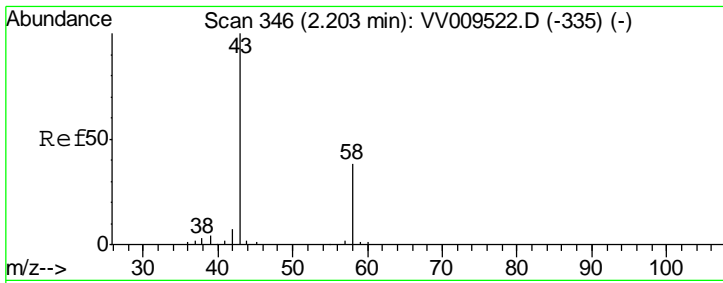
(#) = qualifier out of range (m) = manual integration (+) = signals summed

Data File : VV009535.D  
Acq On : 07 Mar 2019 17:52  
Operator : SY/MD  
Sample : K1789-02  
Misc : 6.33G/10ML/MSVOA\_V/SOIL  
ALS Vial : 1 Sample Multiplier: 1

Instrument :  
MSVOA\_V  
ClientSampleId :  
BF0N8

Quant Time: Mar 08 03:06:29 2019  
Quant Method : Z:\VOASRV\HPCHEM1\MSVOA\_V\METHOD\SOM2VLM030519S.M  
Quant Title : VOC Analysis  
QLast Update : Fri Mar 08 03:01:51 2019  
Response via : Initial Calibration



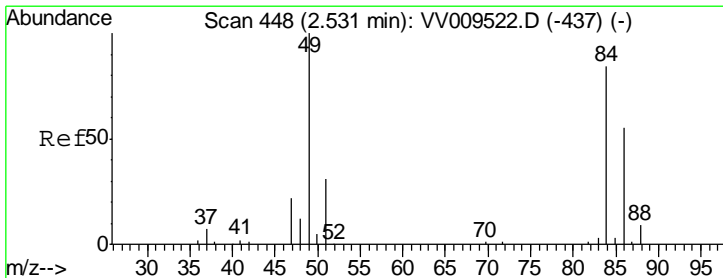
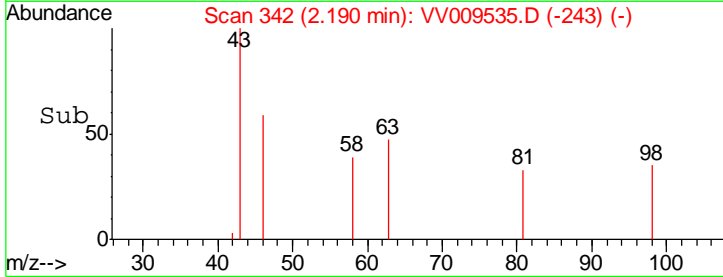
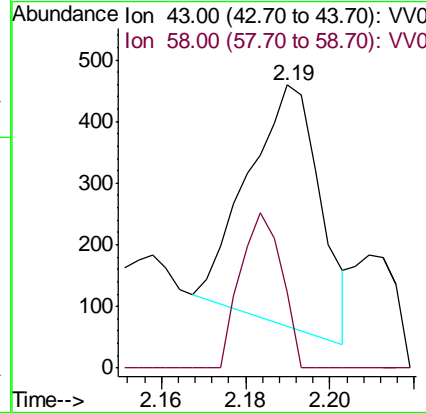
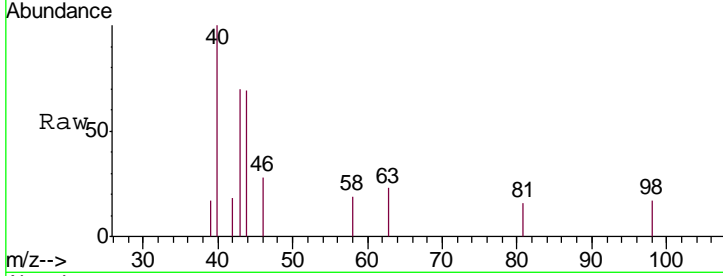


#13  
 Acetone  
 Concen: 0.883 ug/L  
 RT: 2.19 min Scan# 342  
 Delta R.T. -0.01 min  
 Lab File: VV009535.D  
 Acq: 07 Mar 2019 17:52

Instrument :  
 MSVOA\_V  
 ClientSampled :  
 BF0N8

Tgt Ion: 43 Resp: 463

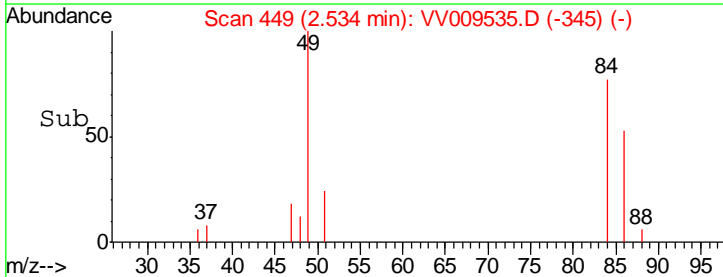
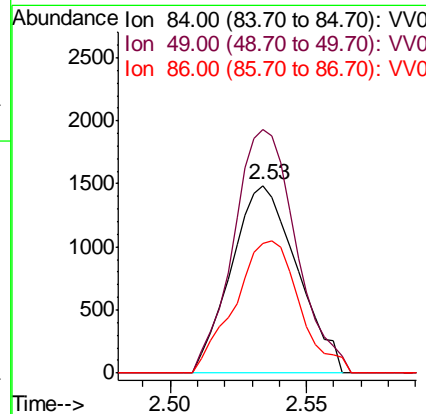
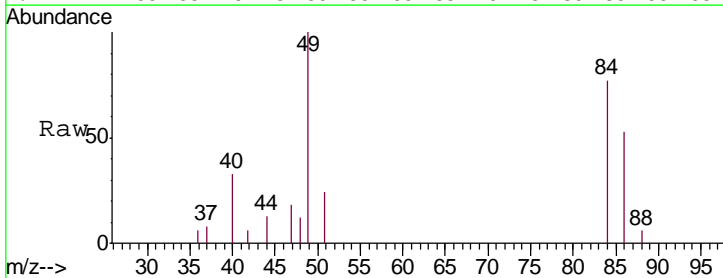
Ion	Ratio	Lower	Upper
43	100		
58	37.6	0.0	68.8

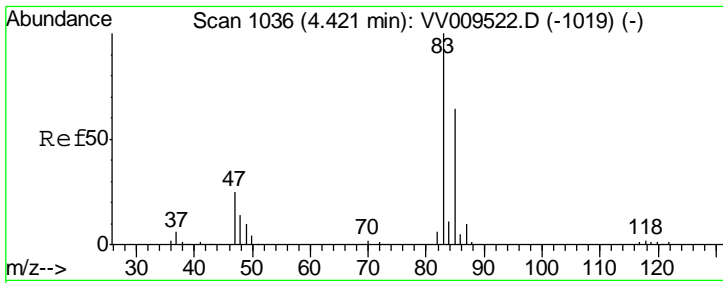


#16  
 Methylene chloride  
 Concen: 1.511 ug/L  
 RT: 2.53 min Scan# 449  
 Delta R.T. 0.00 min  
 Lab File: VV009535.D  
 Acq: 07 Mar 2019 17:52

Tgt Ion: 84 Resp: 2492

Ion	Ratio	Lower	Upper
84	100		
49	129.8	84.6	157.0
86	69.4	46.1	85.7

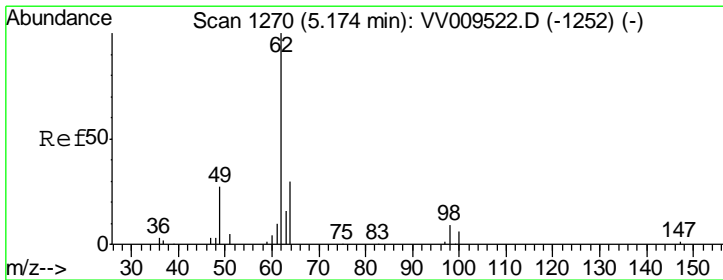
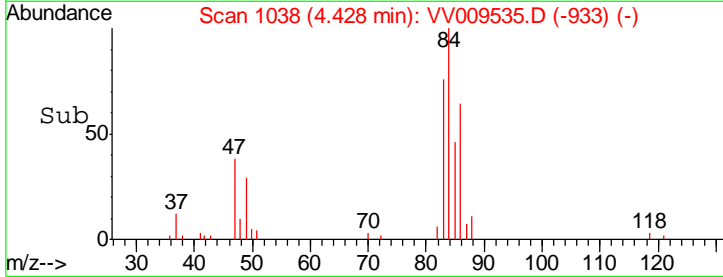
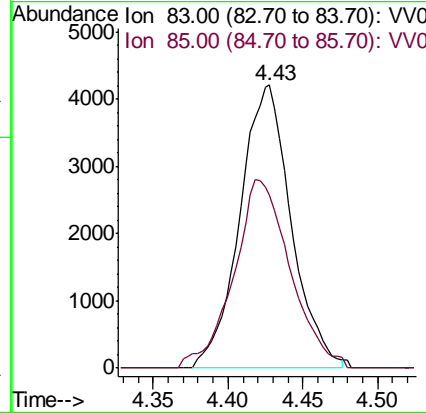
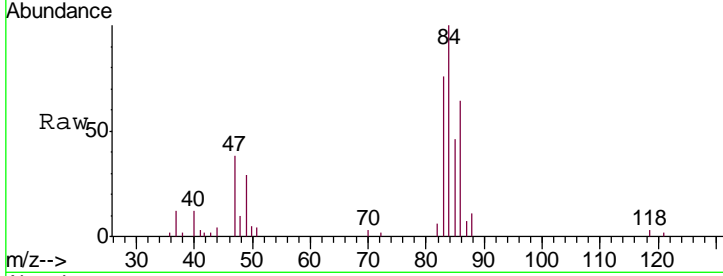




#25  
 Chloroform  
 Concen: 3.414 ug/L  
 RT: 4.43 min Scan# 1038  
 Delta R.T. 0.01 min  
 Lab File: VV009535.D  
 Acq: 07 Mar 2019 17:52

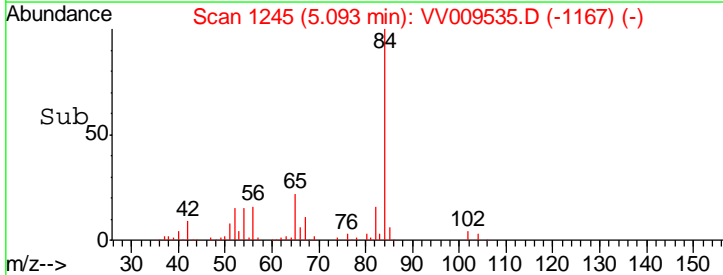
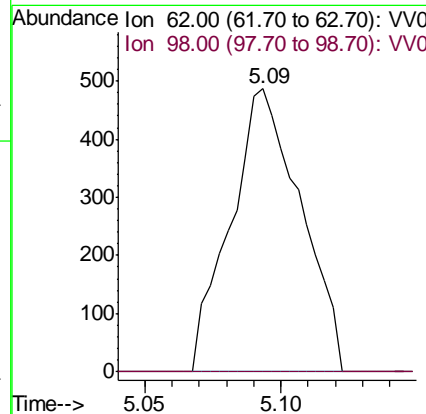
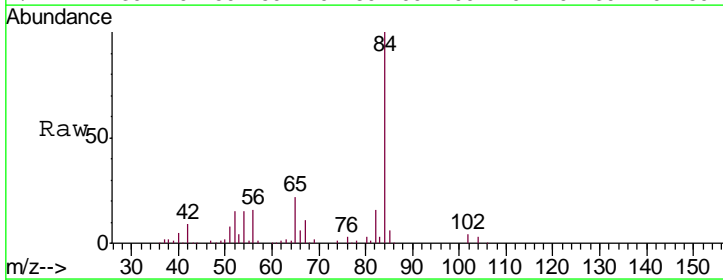
Instrument :  
 MSVOA\_V  
 ClientSampled :  
 BF0N8

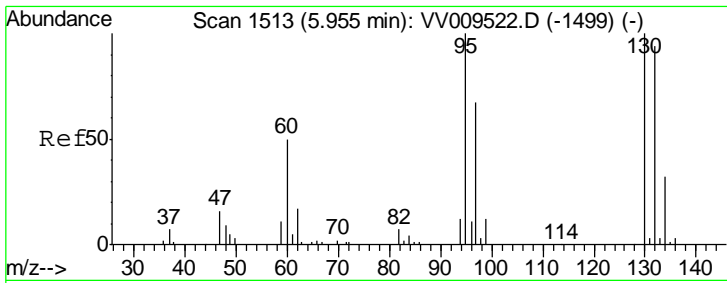
Tgt Ion	Resp	Lower	Upper
83	10075		
83	100		
85	72.7	45.4	84.2



#27  
 1,2-Dichloroethane  
 Concen: 0.425 ug/L  
 RT: 5.09 min Scan# 1245  
 Delta R.T. -0.08 min  
 Lab File: VV009535.D  
 Acq: 07 Mar 2019 17:52

Tgt Ion	Resp	Lower	Upper
62	870		
62	100		
98	0.0	6.6	10.0#

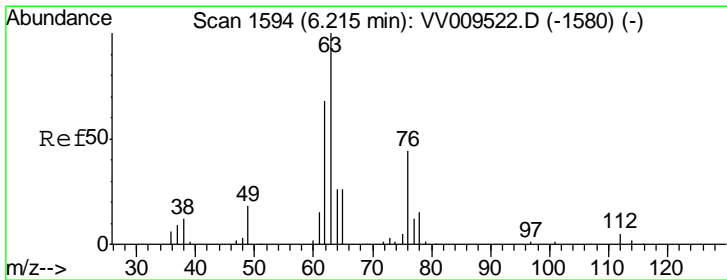
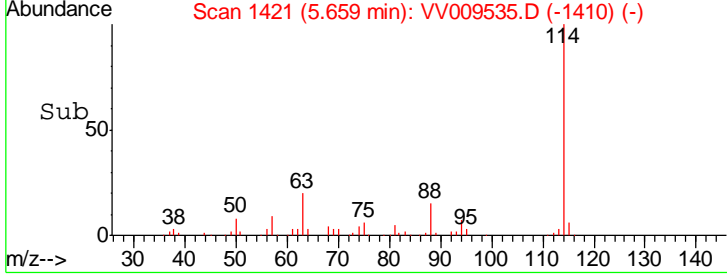
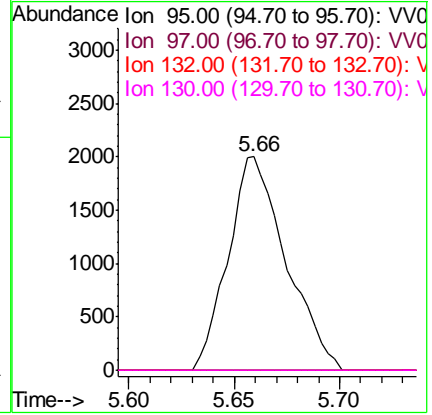
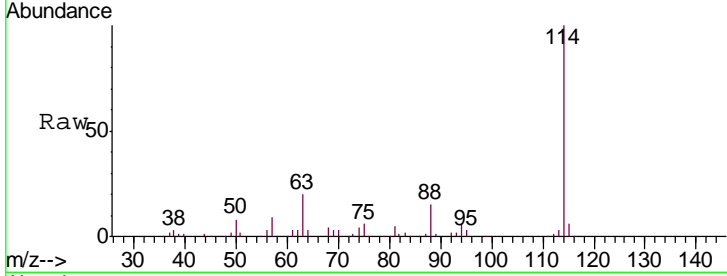




#35  
 Trichloroethene  
 Concen: 2.097 ug/L  
 RT: 5.66 min Scan# 1421  
 Delta R.T. -0.30 min  
 Lab File: VV009535.D  
 Acq: 07 Mar 2019 17:52

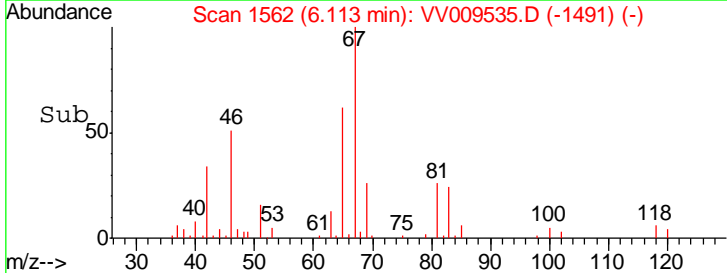
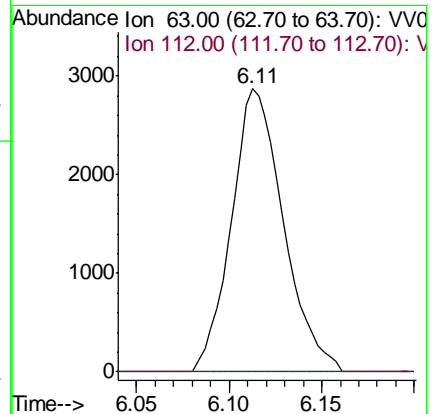
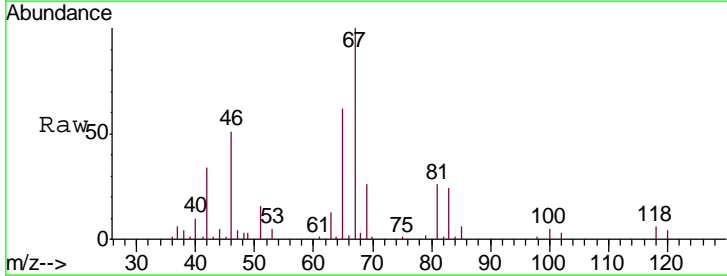
Instrument :  
 MSVOA\_V  
 ClientSampled :  
 BF0N8

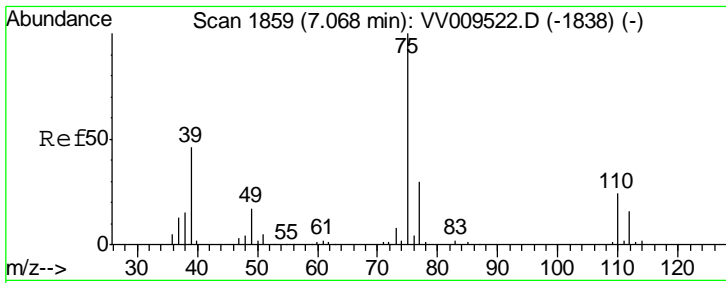
Tgt Ion	Resp	Lower	Upper
95	3808		
97	0.0	44.3	82.3#
132	0.0	64.4	119.6#
130	0.0	69.4	128.8#



#40  
 1,2-Dichloropropane  
 Concen: 3.434 ug/L  
 RT: 6.11 min Scan# 1562  
 Delta R.T. -0.10 min  
 Lab File: VV009535.D  
 Acq: 07 Mar 2019 17:52

Tgt Ion	Resp	Lower	Upper
63	5596		
112	0.0	3.0	4.4#

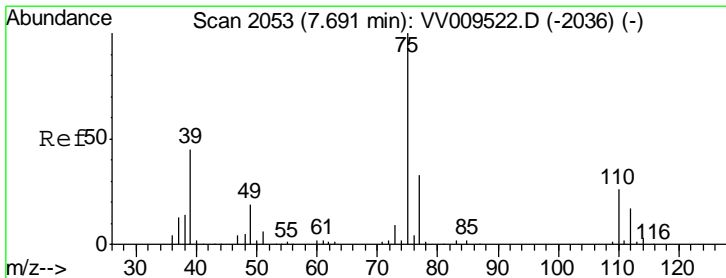
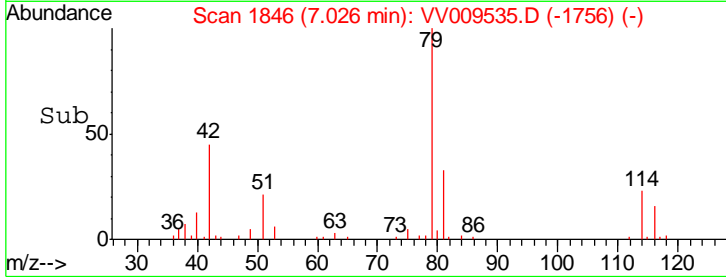
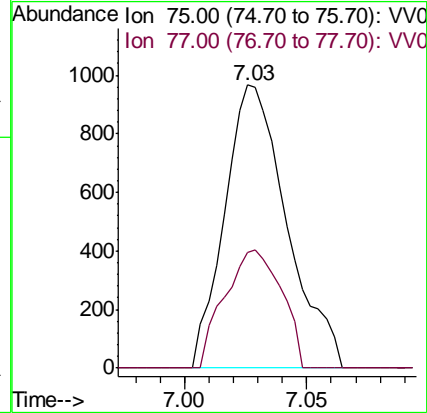
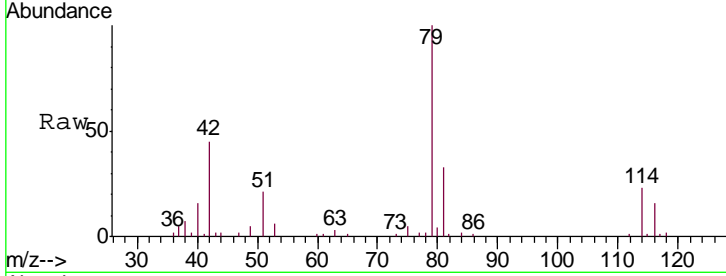




#42  
 cis-1,3-Dichloropropene  
 Concen: 0.676 ug/L  
 RT: 7.03 min Scan# 1846  
 Delta R.T. -0.04 min  
 Lab File: VV009535.D  
 Acq: 07 Mar 2019 17:52

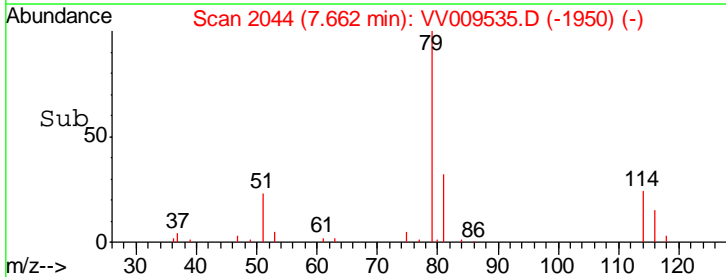
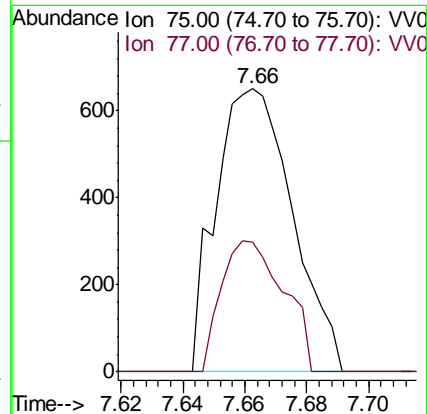
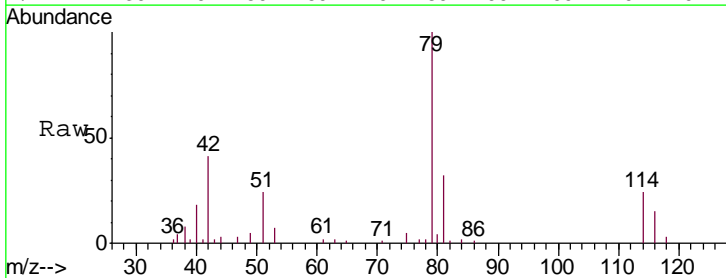
Instrument :  
 MSVOA\_V  
 ClientSampled :  
 BF0N8

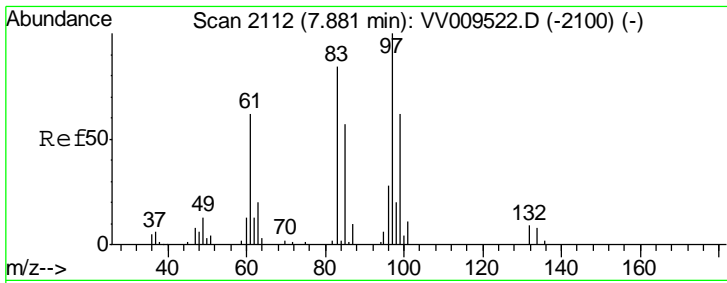
Tgt Ion: 75 Resp: 1710  
 Ion Ratio Lower Upper  
 75 100  
 77 41.0 21.4 39.8#



#45  
 trans-1,3-Dichloropropene  
 Concen: 0.507 ug/L  
 RT: 7.66 min Scan# 2044  
 Delta R.T. -0.03 min  
 Lab File: VV009535.D  
 Acq: 07 Mar 2019 17:52

Tgt Ion: 75 Resp: 1120  
 Ion Ratio Lower Upper  
 75 100  
 77 45.9 22.5 41.7#

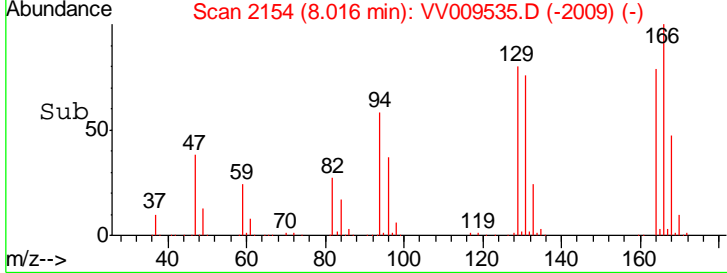
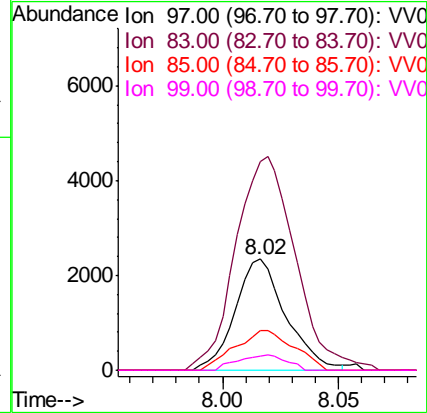
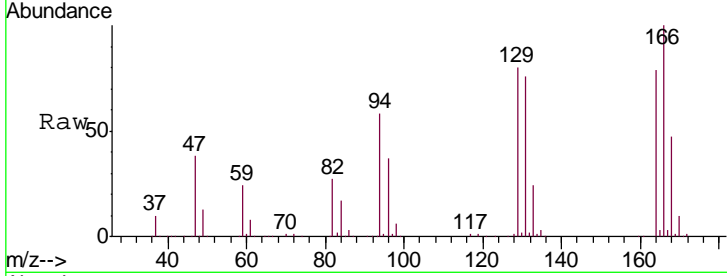




#46  
 1,1,2-Trichloroethane  
 Concen: 2.634 ug/L  
 RT: 8.02 min Scan# 2154  
 Delta R.T. 0.14 min  
 Lab File: VV009535.D  
 Acq: 07 Mar 2019 17:52

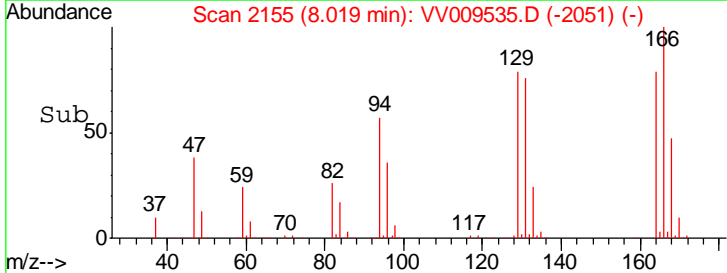
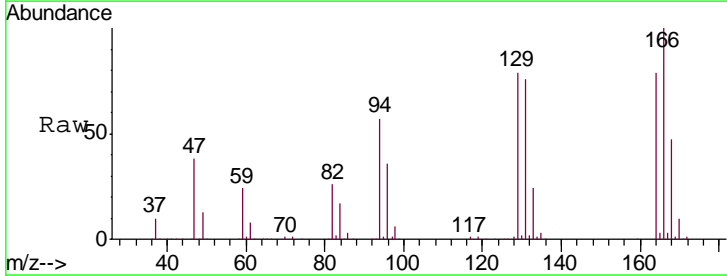
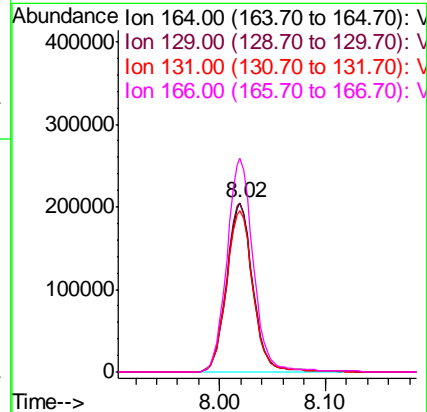
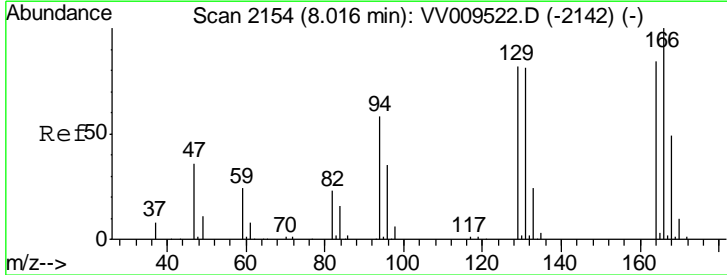
Instrument :  
 MSVOA\_V  
 ClientSampled :  
 BF0N8

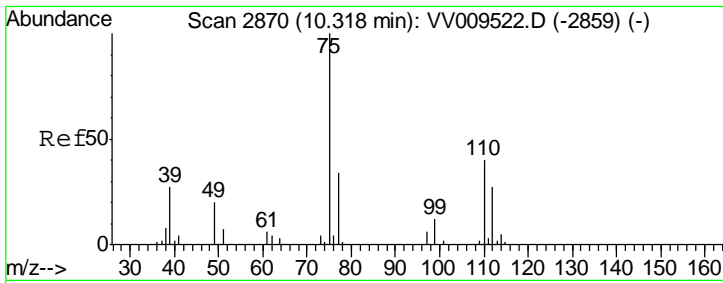
Tgt Ion	Resp	Lower	Upper
97	3566		
97	100		
83	187.4	63.8	118.6#
85	35.3	39.5	73.4#
99	13.1	45.9	85.3#



#47  
 Tetrachloroethene  
 Concen: 255.332 ug/L  
 RT: 8.02 min Scan# 2155  
 Delta R.T. 0.00 min  
 Lab File: VV009535.D  
 Acq: 07 Mar 2019 17:52

Tgt Ion	Resp	Lower	Upper
164	351749		
164	100		
129	100.1	67.7	125.7
131	95.7	67.5	125.3
166	126.4	81.6	151.6





#59  
 1,2,3-Trichloropropane  
 Concen: 5.581 ug/L  
 RT: 11.30 min Scan# 3174  
 Delta R.T. 0.98 min  
 Lab File: VV009535.D  
 Acq: 07 Mar 2019 17:52

Instrument : MSVOA\_V  
 ClientSampleId : BF0N8

Tgt Ion	Resp	Lower	Upper
75	100		
77	34.6	25.9	38.9

