

Data Path : Z:\voasrv\HPCHEM1\MSVOA_V\Data\VW030922\
 Data File : VW024892.D
 Acq On : 09 Mar 2022 23:20
 Operator : SY/MD
 Sample : N1856-07
 Misc : 5.0mL/MSVOA_V/WATER
 ALS Vial : 11 Sample Multiplier: 1

Instrument :
 MSVOA_V
 ClientSampleId :
 C0D59

Quant Time: Mar 10 05:51:34 2022
 Quant Method : Z:\voasrv\HPCHEM1\MSVOA_V\Method\SFAMVLM022822WMA.M
 Quant Title : VOC Analysis
 QLast Update : Thu Mar 10 05:49:38 2022
 Response via : Initial Calibration

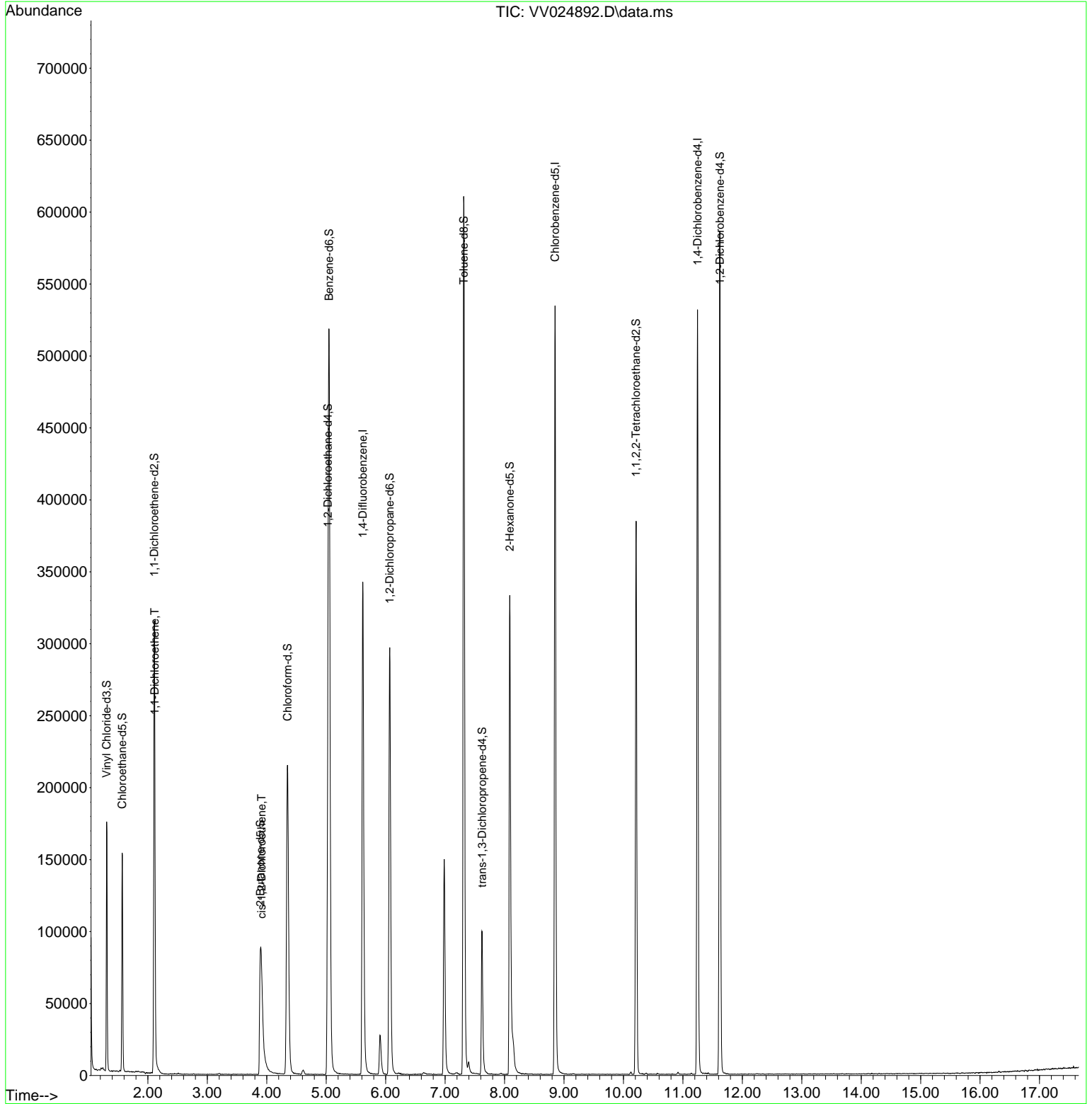
Compound	R.T.	QIon	Response	Conc	Units	Dev(Min)
Internal Standards						
1) 1,4-Difluorobenzene	5.616	114	301433	50.000	ug/L	0.00
28) Chlorobenzene-d5	8.850	117	293995	50.000	ug/L	0.00
58) 1,4-Dichlorobenzene-d4	11.246	152	133494	50.000	ug/L	0.00
System Monitoring Compounds						
4) Vinyl Chloride-d3	1.307	65	111080	36.241	ug/L	0.00
Spiked Amount	50.000	Range 60 - 135	Recovery =	72.480%		
7) Chloroethane-d5	1.568	69	98779	41.077	ug/L	0.00
Spiked Amount	50.000	Range 70 - 130	Recovery =	82.160%		
11) 1,1-Dichloroethene-d2	2.108	63	160816	31.260	ug/L	0.00
Spiked Amount	50.000	Range 60 - 125	Recovery =	62.520%		
21) 2-Butanone-d5	3.892	46	167932	96.275	ug/L	0.00
Spiked Amount	100.000	Range 40 - 130	Recovery =	96.280%		
24) Chloroform-d	4.349	84	228212	42.653	ug/L	0.00
Spiked Amount	50.000	Range 70 - 125	Recovery =	85.300%		
26) 1,2-Dichloroethane-d4	5.031	65	141157	44.714	ug/L	0.00
Spiked Amount	50.000	Range 70 - 125	Recovery =	89.420%		
32) Benzene-d6	5.050	84	474531	43.547	ug/L	0.00
Spiked Amount	50.000	Range 70 - 125	Recovery =	87.100%		
36) 1,2-Dichloropropane-d6	6.069	67	153107	45.097	ug/L	0.00
Spiked Amount	50.000	Range 70 - 120	Recovery =	90.200%		
41) Toluene-d8	7.313	98	410110	42.481	ug/L	0.00
Spiked Amount	50.000	Range 80 - 120	Recovery =	84.960%		
43) trans-1,3-Dichloroprop...	7.622	79	60692	41.141	ug/L	0.00
Spiked Amount	50.000	Range 60 - 125	Recovery =	82.280%		
47) 2-Hexanone-d5	8.088	63	121674	94.417	ug/L	0.00
Spiked Amount	100.000	Range 45 - 130	Recovery =	94.420%		
56) 1,1,2,2-Tetrachloroeth...	10.214	84	188168	46.728	ug/L	0.00
Spiked Amount	50.000	Range 65 - 120	Recovery =	93.460%		
66) 1,2-Dichlorobenzene-d4	11.622	152	145762	47.401	ug/L	0.00
Spiked Amount	50.000	Range 80 - 120	Recovery =	94.800%		
Target Compounds						
12) 1,1-Dichloroethene	2.117	96	11030	4.944	ug/L #	1
20) cis-1,2-Dichloroethene	3.912	96	10768	4.122	ug/L	94

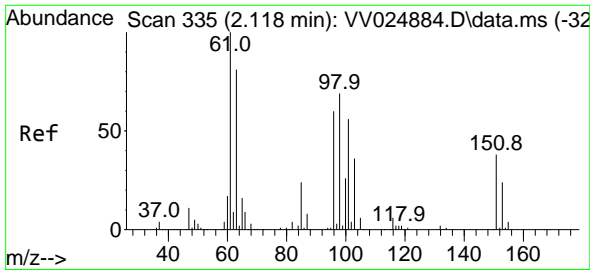
(#) = qualifier out of range (m) = manual integration (+) = signals summed

Data Path : Z:\voasrv\HPCHEM1\MSVOA_V\Data\VV030922\
 Data File : VV024892.D
 Acq On : 09 Mar 2022 23:20
 Operator : SY/MD
 Sample : N1856-07
 Misc : 5.0mL/MSVOA_V/WATER
 ALS Vial : 11 Sample Multiplier: 1

Instrument :
 MSVOA_V
 ClientSampleId :
 C0D59

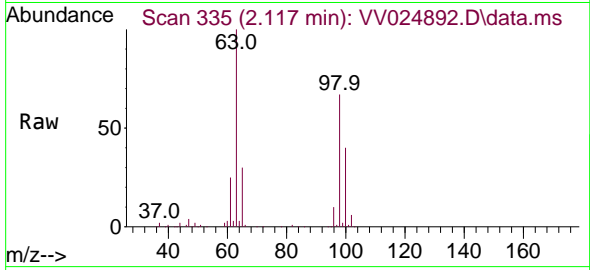
Quant Time: Mar 10 05:51:34 2022
 Quant Method : Z:\voasrv\HPCHEM1\MSVOA_V\Method\SFAMVLM022822WMA.M
 Quant Title : VOC Analysis
 QLast Update : Thu Mar 10 05:49:38 2022
 Response via : Initial Calibration



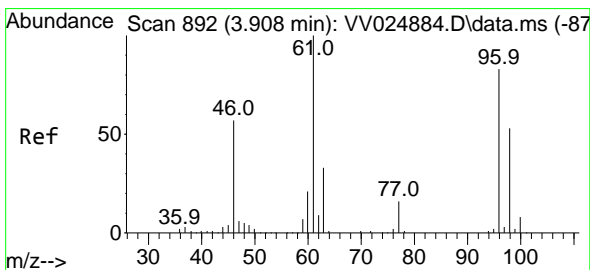
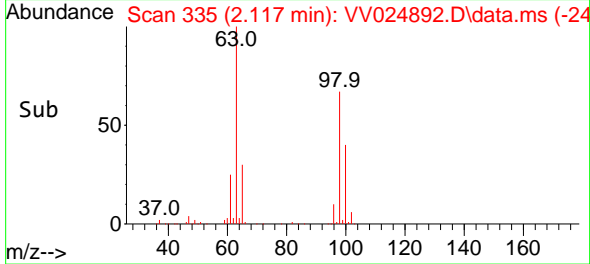
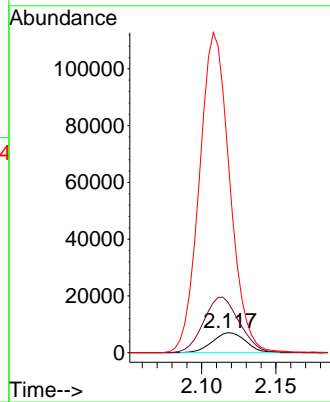


#12
 1,1-Dichloroethene
 Concen: 4.944 ug/L
 RT: 2.117 min Scan# 31
 Delta R.T. -0.000 min
 Lab File: VV024892.D
 Acq: 09 Mar 2022 23:20

Instrument :
 MSVOA_V
 ClientSampleId :
 COD59



Tgt Ion: 96 Resp: 11030
 Ion Ratio Lower Upper
 96 100
 61 253.2 117.6 218.4#
 63 997.9 105.3 195.5#



#20
 cis-1,2-Dichloroethene
 Concen: 4.122 ug/L
 RT: 3.912 min Scan# 893
 Delta R.T. 0.003 min
 Lab File: VV024892.D
 Acq: 09 Mar 2022 23:20

Tgt Ion: 96 Resp: 10768
 Ion Ratio Lower Upper
 96 100
 61 116.3 86.1 159.9
 68 0.0 0.0 0.0

