

Data Path : Z:\VOASRV\HPCHEM1\MSVOA V\DATA\VV031019\
 Data File : VV009571.D
 Acq On : 10 Mar 2019 17:07
 Operator : SY/MD
 Sample : K1818-08
 Misc : 6.10G/10ML/MSVOA V/SOIL
 ALS Vial : 1 Sample Multiplier: 1

Instrument :
 MSVOA_V
 ClientSampleId :
 BF0Q8

Integration Parameters: LSCINT.P

Integrator: RTE
 Smoothing : OFF
 Sampling : 1
 Start Thrs: 0.2
 Stop Thrs : 0

Filtering: 5
 Min Area: 0 % of largest Peak
 Max Peaks: 100
 Peak Location: TOP

If leading or trailing edge < 100 prefer < Baseline drop else tangent >
 Peak separation: 5

Method : Z:\VOASRV\HPCHEM1\MSVOA_V\METHOD\SOM2VLM030519S.M
 Title : VOC Analysis

Signal : TIC

| peak # | R.T. min | first scan | max scan | last scan | PK TY | peak height | corr. area | corr. % max. | % of total |
|--------|----------|------------|----------|-----------|-------|-------------|------------|--------------|------------|
| 1 | 1.319 | 64 | 71 | 84 | rVB | 53921 | 55814 | 11.78% | 1.525% |
| 2 | 1.573 | 143 | 150 | 162 | rVB | 56104 | 69372 | 14.64% | 1.896% |
| 3 | 2.126 | 314 | 322 | 334 | rVB | 138561 | 192166 | 40.55% | 5.252% |
| 4 | 2.540 | 442 | 451 | 461 | rVB4 | 2021 | 3317 | 0.70% | 0.091% |
| 5 | 2.656 | 472 | 487 | 506 | rBV2 | 12634 | 28742 | 6.07% | 0.785% |
| 6 | 2.839 | 538 | 544 | 545 | rBV2 | 202 | 194 | 0.04% | 0.005% |
| 7 | 2.900 | 556 | 563 | 567 | rVB2 | 384 | 490 | 0.10% | 0.013% |
| 8 | 2.978 | 583 | 587 | 590 | rBV2 | 273 | 158 | 0.03% | 0.004% |
| 9 | 3.003 | 590 | 595 | 597 | rBV | 204 | 185 | 0.04% | 0.005% |
| 10 | 3.077 | 615 | 618 | 623 | rVB3 | 680 | 508 | 0.11% | 0.014% |
| 11 | 3.109 | 623 | 628 | 634 | rBV | 195 | 218 | 0.05% | 0.006% |
| 12 | 3.238 | 665 | 668 | 674 | rVB2 | 260 | 239 | 0.05% | 0.007% |
| 13 | 3.286 | 679 | 683 | 685 | rBV | 180 | 142 | 0.03% | 0.004% |
| 14 | 3.367 | 706 | 708 | 713 | rBV2 | 377 | 276 | 0.06% | 0.008% |
| 15 | 3.453 | 731 | 735 | 742 | rVB2 | 248 | 207 | 0.04% | 0.006% |
| 16 | 3.495 | 745 | 748 | 752 | rBV | 111 | 129 | 0.03% | 0.004% |
| 17 | 3.640 | 790 | 793 | 798 | rVB2 | 222 | 137 | 0.03% | 0.004% |
| 18 | 3.698 | 809 | 811 | 813 | rBV | 205 | 131 | 0.03% | 0.004% |
| 19 | 3.949 | 874 | 889 | 890 | rBV2 | 19836 | 34993 | 7.38% | 0.956% |
| 20 | 4.232 | 975 | 977 | 980 | rBV2 | 399 | 177 | 0.04% | 0.005% |
| 21 | 4.402 | 1014 | 1030 | 1047 | rBV2 | 82329 | 200635 | 42.34% | 5.483% |
| 22 | 4.585 | 1084 | 1087 | 1095 | rBV3 | 422 | 606 | 0.13% | 0.017% |
| 23 | 4.701 | 1120 | 1123 | 1127 | rBV2 | 537 | 500 | 0.11% | 0.014% |
| 24 | 4.762 | 1139 | 1142 | 1144 | rBV2 | 224 | 143 | 0.03% | 0.004% |
| 25 | 4.804 | 1152 | 1155 | 1157 | rBV2 | 274 | 174 | 0.04% | 0.005% |
| 26 | 5.000 | 1213 | 1216 | 1222 | rBV2 | 180 | 204 | 0.04% | 0.006% |
| 27 | 5.096 | 1228 | 1246 | 1261 | rBV2 | 188526 | 473858 | 100.00% | 12.950% |
| 28 | 5.424 | 1343 | 1348 | 1350 | rBV2 | 269 | 214 | 0.05% | 0.006% |
| 29 | 5.662 | 1405 | 1422 | 1438 | rBV | 155267 | 307273 | 64.84% | 8.397% |
| 30 | 5.942 | 1506 | 1509 | 1511 | rBV3 | 459 | 273 | 0.06% | 0.007% |
| 31 | 6.119 | 1547 | 1564 | 1584 | rBV | 108001 | 223291 | 47.12% | 6.102% |
| 32 | 6.315 | 1622 | 1625 | 1626 | rBV2 | 241 | 135 | 0.03% | 0.004% |
| 33 | 6.357 | 1634 | 1638 | 1642 | rVB2 | 354 | 313 | 0.07% | 0.009% |
| 34 | 6.383 | 1642 | 1646 | 1649 | rBV | 261 | 261 | 0.06% | 0.007% |

Data Path : Z:\VOASRV\HPCHEM1\MSVOA V\DATA\VV031019\
 Data File : VV009571.D
 Acq On : 10 Mar 2019 17:07
 Operator : SY/MD
 Sample : K1818-08
 Misc : 6.10G/10ML/MSVOA V/SOIL
 ALS Vial : 1 Sample Multiplier: 1

Instrument :
 MSVOA_V
 ClientSampleId :
 BF0Q8

Integration Parameters: LSCINT.P

Integrator: RTE
 Smoothing : OFF
 Sampling : 1
 Start Thrs: 0.2
 Stop Thrs : 0

Filtering: 5
 Min Area: 0 % of largest Peak
 Max Peaks: 100
 Peak Location: TOP

If leading or trailing edge < 100 prefer < Baseline drop else tangent >
 Peak separation: 5

Method : Z:\VOASRV\HPCHEM1\MSVOA_V\METHOD\SOM2VLM030519S.M
 Title : VOC Analysis

| | | | | | | | | | |
|----|--------|------|------|------|------|--------|--------|--------|---------|
| 35 | 6.576 | 1703 | 1706 | 1710 | rVB | 212 | 136 | 0.03% | 0.004% |
| 36 | 6.598 | 1710 | 1713 | 1718 | rBV | 215 | 197 | 0.04% | 0.005% |
| 37 | 6.653 | 1725 | 1730 | 1733 | rBV2 | 255 | 228 | 0.05% | 0.006% |
| 38 | 6.698 | 1736 | 1744 | 1757 | rVB3 | 1644 | 3304 | 0.70% | 0.090% |
| 39 | 6.775 | 1764 | 1768 | 1770 | rBV | 143 | 144 | 0.03% | 0.004% |
| 40 | 6.830 | 1782 | 1785 | 1790 | rVB3 | 313 | 176 | 0.04% | 0.005% |
| 41 | 6.878 | 1797 | 1800 | 1804 | rBB2 | 244 | 147 | 0.03% | 0.004% |
| 42 | 6.939 | 1816 | 1819 | 1823 | rBV2 | 225 | 183 | 0.04% | 0.005% |
| 43 | 6.981 | 1828 | 1832 | 1835 | rBV2 | 258 | 227 | 0.05% | 0.006% |
| 44 | 7.029 | 1836 | 1847 | 1866 | rBV | 60772 | 109723 | 23.16% | 2.999% |
| 45 | 7.209 | 1901 | 1903 | 1908 | rVB | 261 | 133 | 0.03% | 0.004% |
| 46 | 7.257 | 1913 | 1918 | 1920 | rBV | 266 | 231 | 0.05% | 0.006% |
| 47 | 7.280 | 1920 | 1925 | 1926 | rBV2 | 945 | 729 | 0.15% | 0.020% |
| 48 | 7.360 | 1936 | 1950 | 1969 | rBV | 221723 | 395236 | 83.41% | 10.801% |
| 49 | 7.666 | 2034 | 2045 | 2062 | rBV | 39046 | 66985 | 14.14% | 1.831% |
| 50 | 7.778 | 2073 | 2080 | 2083 | rBV3 | 356 | 397 | 0.08% | 0.011% |
| 51 | 7.801 | 2084 | 2087 | 2090 | rBV2 | 381 | 265 | 0.06% | 0.007% |
| 52 | 7.984 | 2131 | 2144 | 2147 | rBV4 | 3413 | 5335 | 1.13% | 0.146% |
| 53 | 8.132 | 2180 | 2190 | 2218 | rBV2 | 65662 | 120498 | 25.43% | 3.293% |
| 54 | 8.299 | 2240 | 2242 | 2248 | rVB4 | 598 | 325 | 0.07% | 0.009% |
| 55 | 8.408 | 2271 | 2276 | 2279 | rBV2 | 200 | 240 | 0.05% | 0.007% |
| 56 | 8.460 | 2287 | 2292 | 2302 | rVB3 | 880 | 1370 | 0.29% | 0.037% |
| 57 | 8.534 | 2313 | 2315 | 2320 | rBV2 | 161 | 149 | 0.03% | 0.004% |
| 58 | 8.643 | 2346 | 2349 | 2352 | rBV | 234 | 142 | 0.03% | 0.004% |
| 59 | 8.765 | 2384 | 2387 | 2392 | rBV2 | 205 | 177 | 0.04% | 0.005% |
| 60 | 8.833 | 2405 | 2408 | 2411 | rBV | 451 | 346 | 0.07% | 0.009% |
| 61 | 8.897 | 2416 | 2428 | 2467 | rVB | 238026 | 405602 | 85.60% | 11.085% |
| 62 | 9.035 | 2467 | 2471 | 2473 | rBV2 | 242 | 194 | 0.04% | 0.005% |
| 63 | 9.180 | 2513 | 2516 | 2519 | rBV2 | 310 | 212 | 0.04% | 0.006% |
| 64 | 9.193 | 2519 | 2520 | 2525 | rVB2 | 321 | 205 | 0.04% | 0.006% |
| 65 | 9.235 | 2527 | 2533 | 2536 | rBV2 | 234 | 257 | 0.05% | 0.007% |
| 66 | 9.257 | 2536 | 2540 | 2544 | rBV | 258 | 236 | 0.05% | 0.006% |
| 67 | 9.296 | 2549 | 2552 | 2556 | rVB | 344 | 291 | 0.06% | 0.008% |
| 68 | 9.675 | 2664 | 2670 | 2675 | rBV2 | 196 | 291 | 0.06% | 0.008% |
| 69 | 9.923 | 2741 | 2747 | 2748 | rBV | 184 | 155 | 0.03% | 0.004% |
| 70 | 10.006 | 2770 | 2773 | 2776 | rBV2 | 169 | 129 | 0.03% | 0.004% |
| 71 | 10.128 | 2808 | 2811 | 2812 | rBV | 335 | 152 | 0.03% | 0.004% |

Data Path : Z:\VOASRV\HPCHEM1\MSVOA V\DATA\VV031019\
 Data File : VV009571.D
 Acq On : 10 Mar 2019 17:07
 Operator : SY/MD
 Sample : K1818-08
 Misc : 6.10G/10ML/MSVOA V/SOIL
 ALS Vial : 1 Sample Multiplier: 1

Instrument :
 MSVOA_V
 ClientSampleId :
 BF0Q8

Integration Parameters: LSCINT.P

Integrator: RTE
 Smoothing : OFF
 Sampling : 1
 Start Thrs: 0.2
 Stop Thrs : 0

Filtering: 5
 Min Area: 0 % of largest Peak
 Max Peaks: 100
 Peak Location: TOP

If leading or trailing edge < 100 prefer < Baseline drop else tangent >
 Peak separation: 5

Method : Z:\VOASRV\HPCHEM1\MSVOA_V\METHOD\SOM2VLM030519S.M
 Title : VOC Analysis

| | | | | | | | | | |
|-----|--------|------|------|------|------|--------|--------|--------|---------|
| 72 | 10.263 | 2841 | 2853 | 2869 | rVV | 114244 | 183730 | 38.77% | 5.021% |
| 73 | 10.360 | 2880 | 2883 | 2885 | rBV | 199 | 151 | 0.03% | 0.004% |
| 74 | 10.427 | 2894 | 2904 | 2917 | rVB3 | 8496 | 13943 | 2.94% | 0.381% |
| 75 | 10.553 | 2941 | 2943 | 2948 | rBV2 | 208 | 125 | 0.03% | 0.003% |
| 76 | 10.601 | 2955 | 2958 | 2961 | rBV2 | 226 | 159 | 0.03% | 0.004% |
| 77 | 10.627 | 2964 | 2966 | 2970 | rVB2 | 304 | 169 | 0.04% | 0.005% |
| 78 | 10.797 | 3012 | 3019 | 3022 | rBV | 305 | 282 | 0.06% | 0.008% |
| 79 | 10.842 | 3026 | 3033 | 3037 | rBV2 | 361 | 422 | 0.09% | 0.012% |
| 80 | 10.868 | 3037 | 3041 | 3042 | rBV2 | 179 | 127 | 0.03% | 0.003% |
| 81 | 10.910 | 3051 | 3054 | 3056 | rBV2 | 182 | 124 | 0.03% | 0.003% |
| 82 | 11.183 | 3137 | 3139 | 3141 | rBV3 | 289 | 149 | 0.03% | 0.004% |
| 83 | 11.296 | 3162 | 3174 | 3191 | rBV | 224091 | 376722 | 79.50% | 10.295% |
| 84 | 11.472 | 3225 | 3229 | 3230 | rBV2 | 350 | 249 | 0.05% | 0.007% |
| 85 | 11.575 | 3258 | 3261 | 3266 | rBV | 316 | 321 | 0.07% | 0.009% |
| 86 | 11.675 | 3280 | 3292 | 3310 | rVB | 228072 | 369127 | 77.90% | 10.088% |
| 87 | 11.778 | 3321 | 3324 | 3326 | rBV | 248 | 189 | 0.04% | 0.005% |
| 88 | 11.842 | 3340 | 3344 | 3348 | rVB2 | 433 | 324 | 0.07% | 0.009% |
| 89 | 12.180 | 3445 | 3449 | 3452 | rVB2 | 261 | 196 | 0.04% | 0.005% |
| 90 | 12.199 | 3452 | 3455 | 3458 | rBV | 215 | 133 | 0.03% | 0.004% |
| 91 | 12.251 | 3468 | 3471 | 3475 | rBV | 304 | 196 | 0.04% | 0.005% |
| 92 | 12.575 | 3569 | 3572 | 3574 | rBV | 203 | 126 | 0.03% | 0.003% |
| 93 | 12.730 | 3615 | 3620 | 3625 | rBV | 335 | 349 | 0.07% | 0.010% |
| 94 | 12.759 | 3627 | 3629 | 3633 | rVB2 | 229 | 131 | 0.03% | 0.004% |
| 95 | 12.894 | 3668 | 3671 | 3674 | rVB2 | 408 | 261 | 0.06% | 0.007% |
| 96 | 13.373 | 3817 | 3820 | 3823 | rBV2 | 305 | 185 | 0.04% | 0.005% |
| 97 | 13.704 | 3919 | 3923 | 3927 | rBV2 | 398 | 298 | 0.06% | 0.008% |
| 98 | 13.874 | 3973 | 3976 | 3977 | rBV2 | 314 | 168 | 0.04% | 0.005% |
| 99 | 14.267 | 4096 | 4098 | 4101 | rBV | 297 | 237 | 0.05% | 0.006% |
| 100 | 14.659 | 4216 | 4220 | 4223 | rBV2 | 417 | 351 | 0.07% | 0.010% |

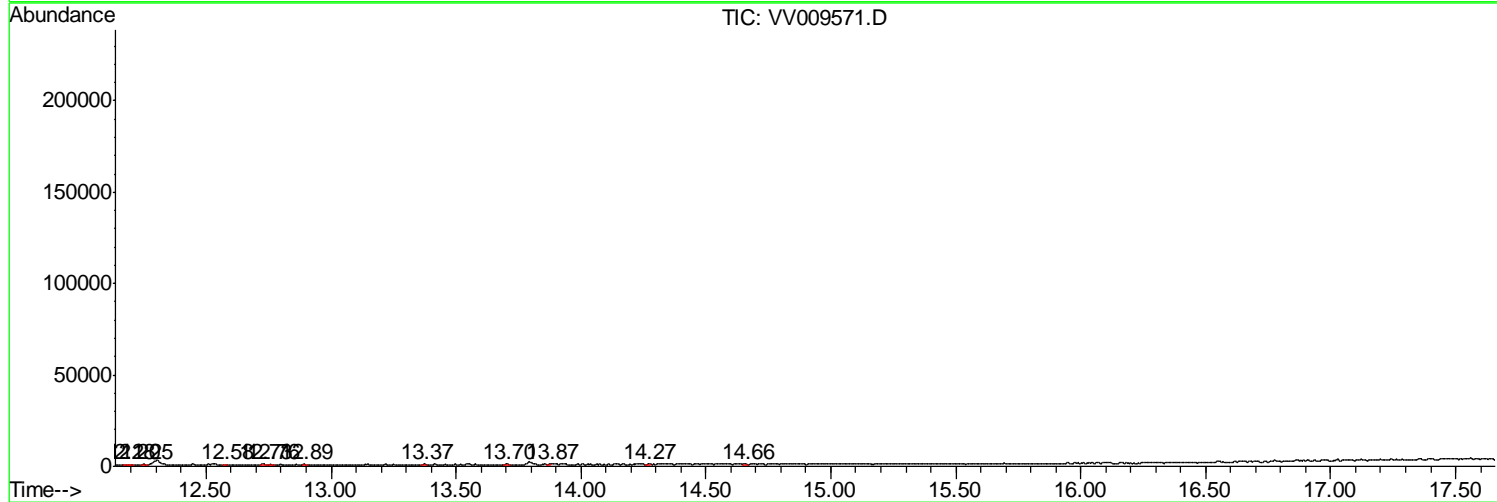
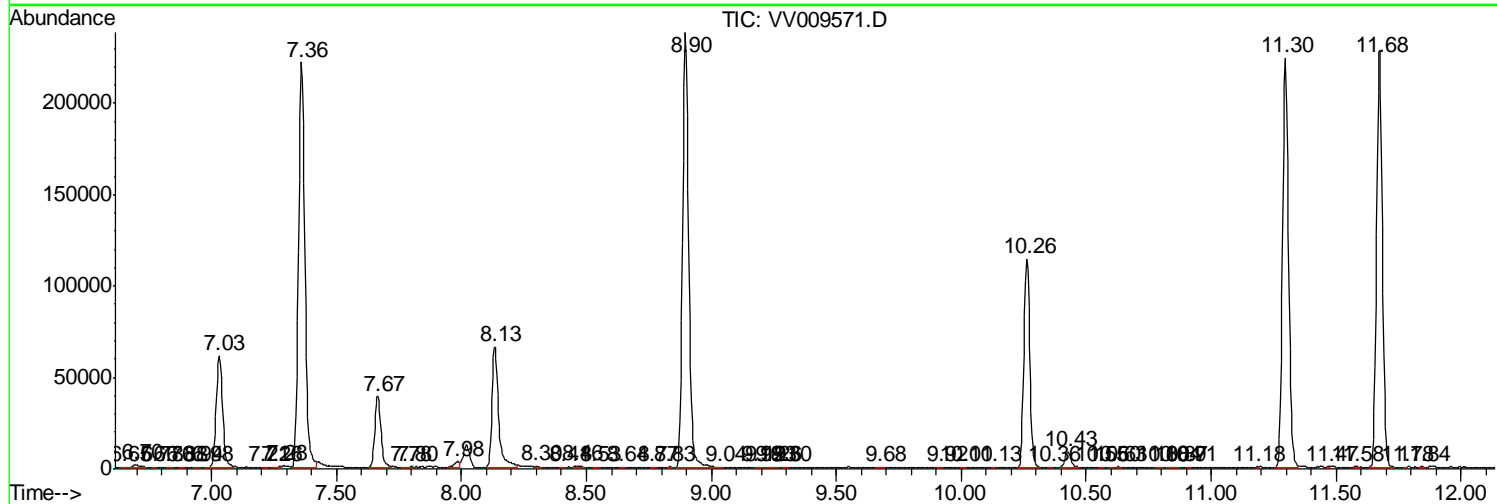
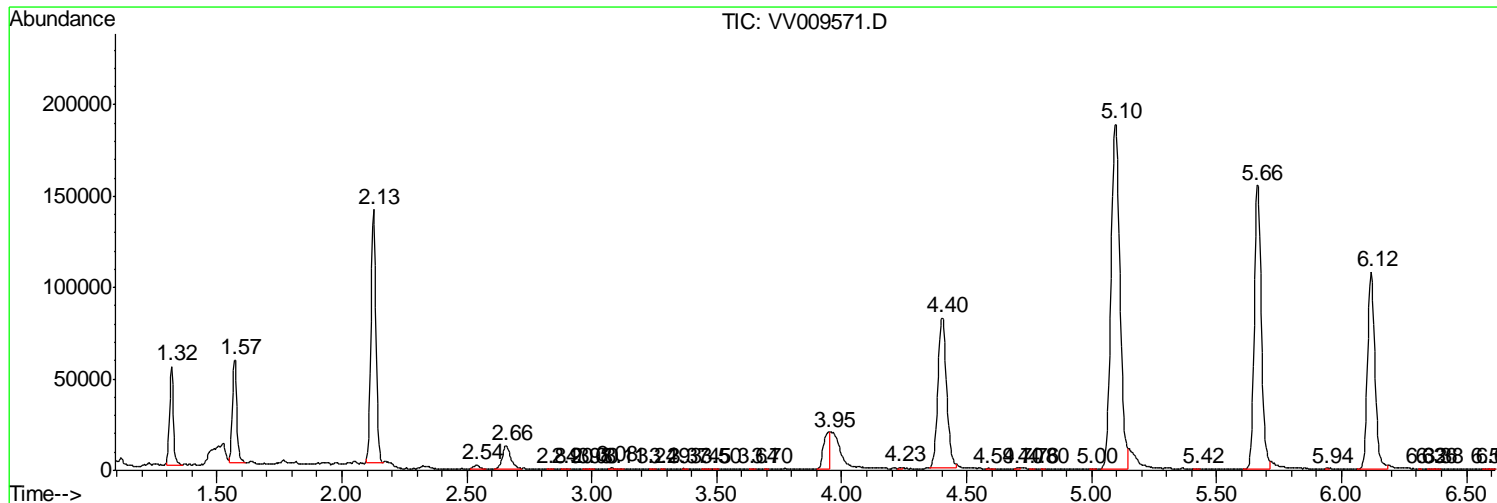
Sum of corrected areas: 3659166

Data Path : Z:\VOASRV\HPCHEM1\MSVOA V\DATA\VV031019\
 Data File : VV009571.D
 Acq On : 10 Mar 2019 17:07
 Operator : SY/MD
 Sample : K1818-08
 Misc : 6.10G/10ML/MSVOA V/SOIL
 ALS Vial : 1 Sample Multiplier: 1

Instrument :
 MSVOA_V
ClientSampled :
 BF0Q8

Quant Method : Z:\VOASRV\HPCHEM1\MSVOA_V\METHOD\SOM2VLM030519S.M
 Quant Title : VOC Analysis

TIC Library : C:\DATABASE\NIST11.L
 TIC Integration Parameters: LSCINT.P



Data Path : Z:\VOASRV\HPCHEM1\MSVOA_V\DATA\VV031019\
Data File : VV009571.D
Acq On : 10 Mar 2019 17:07
Operator : SY/MD
Sample : K1818-08
Misc : 6.10G/10ML/MSVOA_V/SOIL
ALS Vial : 1 Sample Multiplier: 1

Instrument :
MSVOA_V
ClientSampleId :
BF0Q8

Quant Method : Z:\VOASRV\HPCHEM1\MSVOA_V\METHOD\SOM2VLM030519S.M
Quant Title : VOC Analysis

TIC Library : C:\DATABASE\NIST11.L
TIC Integration Parameters: LSCINT.P

No Library Search Compounds Detected

Data Path : Z:\VOASRV\HPCHEM1\MSVOA_V\DATA\VV031019\
Data File : VV009571.D
Acq On : 10 Mar 2019 17:07
Operator : SY/MD
Sample : K1818-08
Misc : 6.10G/10ML/MSVOA_V/SOIL
ALS Vial : 1 Sample Multiplier: 1

Instrument :
MSVOA_V
ClientSampleId :
BF0Q8

Quant Method : Z:\VOASRV\HPCHEM1\MSVOA_V\METHOD\SOM2VLM030519S.M
Quant Title : VOC Analysis

TIC Library : C:\DATABASE\NIST11.L
TIC Integration Parameters: LSCINT.P

| TIC Top Hit name | RT | EstConc | Units | Response | --Internal Standard-- | | | |
|------------------|----|---------|-------|----------|-----------------------|----|------|------|
| | | | | | # | RT | Resp | Conc |
