

Data Path : Z:\voasrv\HPCHEM1\MSVOA_V\Data\VW031021\
 Data File : VW020494.D
 Acq On : 10 Mar 2021 12:36
 Operator : SY/MD
 Sample : M1617-07DL 4X
 Misc : 25.0mL/MSVOA_V/WATER
 ALS Vial : 1 Sample Multiplier: 1

Instrument :
 MSVOA_V
 ClientSampleId :
 BG0N3DL

Quant Time: Mar 11 00:51:02 2021
 Quant Method : Z:\voasrv\HPCHEM1\MSVOA_V\Method\SOMVTR022221WMA.M
 Quant Title : TRACE VOA SOM01.0
 QLast Update : Thu Mar 11 00:49:40 2021
 Response via : Initial Calibration

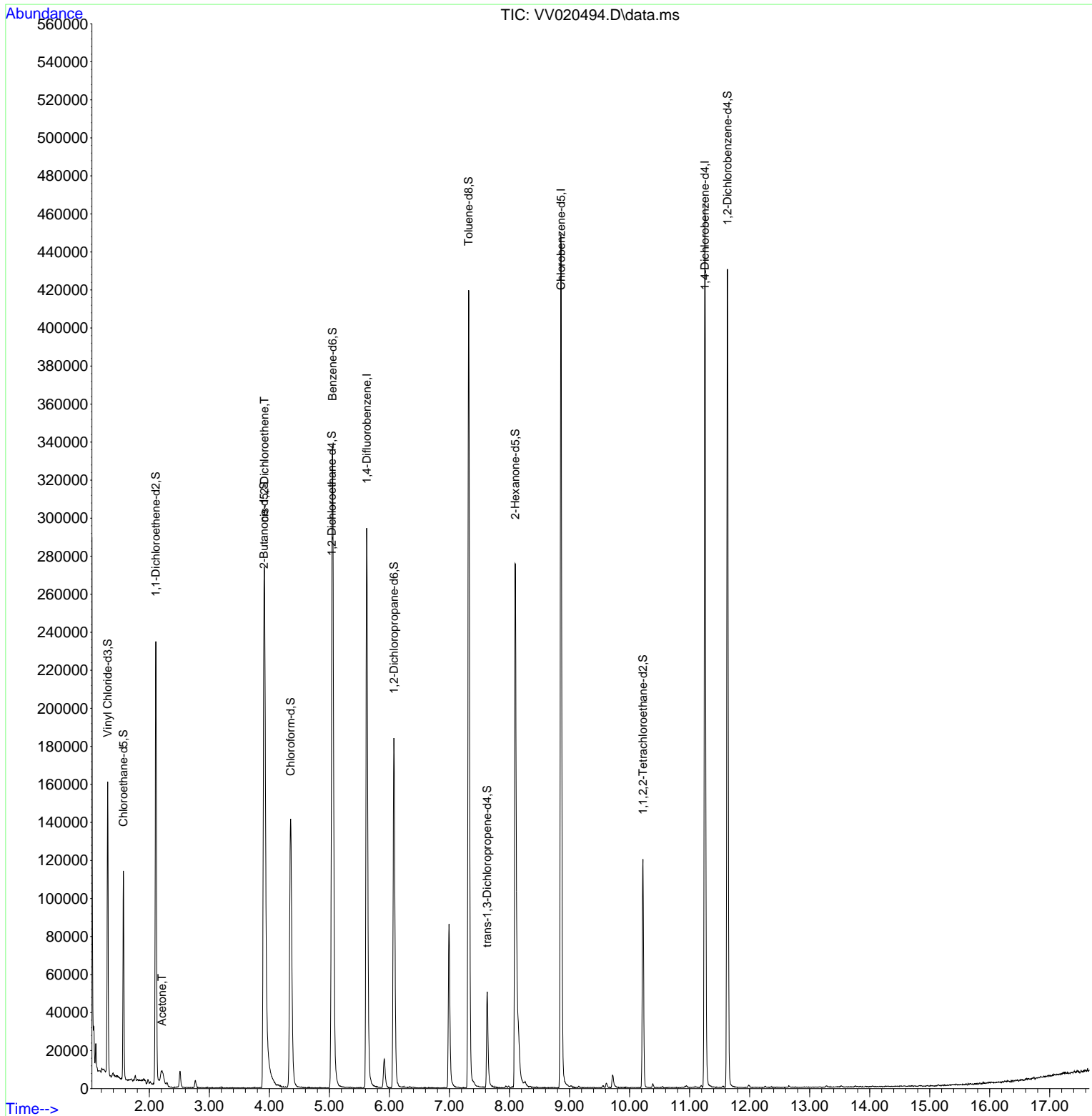
| Compound | R.T. | QIon | Response | Conc | Units | Dev(Min) |
|-------------------------------|--------|----------------|------------|---------|--------|----------|
| Internal Standards | | | | | | |
| 1) 1,4-Difluorobenzene | 5.622 | 114 | 274948 | 5.00 | ug/L | 0.00 |
| 28) Chlorobenzene-d5 | 8.857 | 117 | 270252 | 5.00 | ug/L | 0.00 |
| 61) 1,4-Dichlorobenzene-d4 | 11.255 | 152 | 131330 | 5.00 | ug/L | 0.00 |
| System Monitoring Compounds | | | | | | |
| 4) Vinyl Chloride-d3 | 1.307 | 65 | 85943 | 4.44 | ug/L | 0.00 |
| Spiked Amount | 5.000 | Range 40 - 130 | Recovery = | 88.80% | | |
| 7) Chloroethane-d5 | 1.568 | 69 | 70625 | 4.64 | ug/L | 0.00 |
| Spiked Amount | 5.000 | Range 65 - 130 | Recovery = | 92.80% | | |
| 11) 1,1-Dichloroethene-d2 | 2.108 | 63 | 113722 | 3.02 | ug/L | 0.00 |
| Spiked Amount | 5.000 | Range 60 - 125 | Recovery = | 60.40% | | |
| 20) 2-Butanone-d5 | 3.908 | 46 | 144602 | 43.12 | ug/L | 0.00 |
| Spiked Amount | 50.000 | Range 40 - 130 | Recovery = | 86.24% | | |
| 24) Chloroform-d | 4.352 | 84 | 156504 | 4.52 | ug/L | 0.00 |
| Spiked Amount | 5.000 | Range 70 - 125 | Recovery = | 90.40% | | |
| 26) 1,2-Dichloroethane-d4 | 5.040 | 65 | 74635 | 4.43 | ug/L | 0.00 |
| Spiked Amount | 5.000 | Range 70 - 130 | Recovery = | 88.60% | | |
| 32) Benzene-d6 | 5.053 | 84 | 321950 | 4.76 | ug/L | 0.00 |
| Spiked Amount | 5.000 | Range 70 - 125 | Recovery = | 95.20% | | |
| 36) 1,2-Dichloropropane-d6 | 6.075 | 67 | 92351 | 4.61 | ug/L | 0.00 |
| Spiked Amount | 5.000 | Range 60 - 140 | Recovery = | 92.20% | | |
| 41) Toluene-d8 | 7.320 | 98 | 290962 | 4.45 | ug/L | 0.00 |
| Spiked Amount | 5.000 | Range 70 - 130 | Recovery = | 89.00% | | |
| 45) trans-1,3-Dichloroprop... | 7.628 | 79 | 30493 | 3.98 | ug/L | 0.00 |
| Spiked Amount | 5.000 | Range 55 - 130 | Recovery = | 79.60% | | |
| 48) 2-Hexanone-d5 | 8.095 | 63 | 97435 | 36.29 | ug/L | 0.00 |
| Spiked Amount | 50.000 | Range 45 - 130 | Recovery = | 72.58% | | |
| 59) 1,1,2,2-Tetrachloroeth... | 10.223 | 84 | 55097 | 3.87 | ug/L | 0.00 |
| Spiked Amount | 5.000 | Range 65 - 120 | Recovery = | 77.40% | | |
| 65) 1,2-Dichlorobenzene-d4 | 11.632 | 152 | 121872 | 5.23 | ug/L | 0.00 |
| Spiked Amount | 5.000 | Range 80 - 120 | Recovery = | 104.60% | | |
| Target Compounds | | | | | | |
| 13) Acetone | 2.211 | 43 | 21000 | 6.91 | ug/L # | 30 |
| 22) cis-1,2-Dichloroethene | 3.915 | 96 | 134551 | 5.28 | ug/L | 86 |

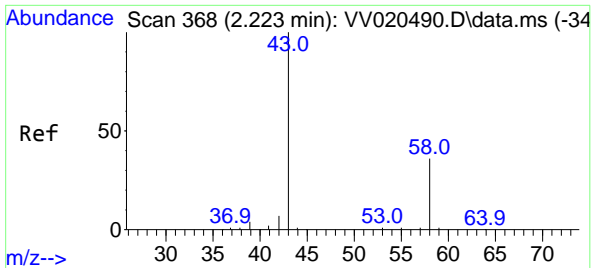
(#) = qualifier out of range (m) = manual integration (+) = signals summed

Data Path : Z:\voasrv\HPCHEM1\MSVOA_V\Data\VV031021\
 Data File : VV020494.D
 Acq On : 10 Mar 2021 12:36
 Operator : SY/MD
 Sample : M1617-07DL 4X
 Misc : 25.0mL/MSVOA_V/WATER
 ALS Vial : 1 Sample Multiplier: 1

Instrument :
 MSVOA_V
 ClientSampled :
 BG0N3DL

Quant Time: Mar 11 00:51:02 2021
 Quant Method : Z:\voasrv\HPCHEM1\MSVOA_V\Method\SOMVTR022221WMA.M
 Quant Title : TRACE VOA SOM01.0
 QLast Update : Thu Mar 11 00:49:40 2021
 Response via : Initial Calibration

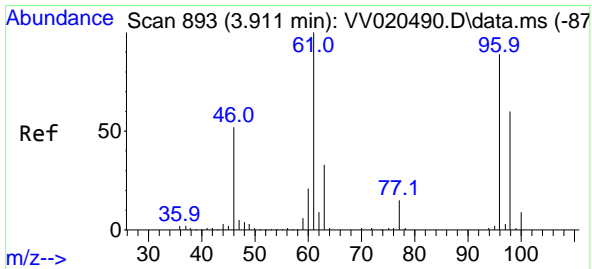
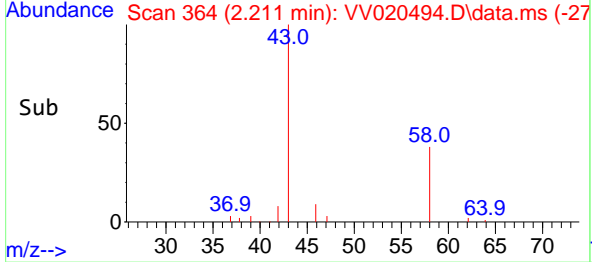
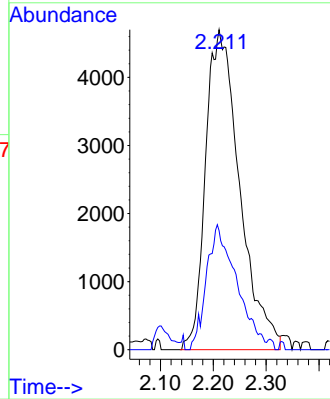
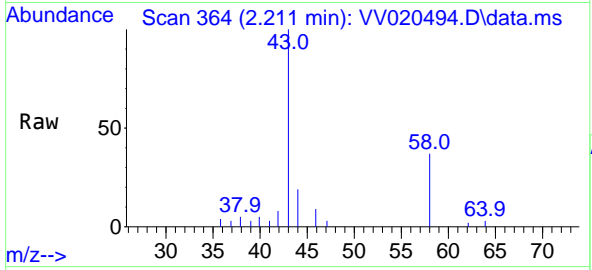




#13
 Acetone
 Concen: 6.91 ug/L
 RT: 2.211 min Scan# 364
 Delta R.T. -0.013 min
 Lab File: VV020494.D
 Acq: 10 Mar 2021 12:36

Instrument :
 MSVOA_V
 ClientSampled :
 BG0N3DL

Tgt Ion: 43 Resp: 21000
 Ion Ratio Lower Upper
 43 100
 58 34.7 0.0 18.6#



#22
 cis-1,2-Dichloroethene
 Concen: 5.28 ug/L
 RT: 3.915 min Scan# 894
 Delta R.T. 0.003 min
 Lab File: VV020494.D
 Acq: 10 Mar 2021 12:36

Tgt Ion: 96 Resp: 134551
 Ion Ratio Lower Upper
 96 100
 61 112.0 89.6 166.4
 68 0.0 0.0 0.0

