

Data Path : Z:\voasrv\HPCHEM1\MSVOA_V\Data\VV031023\
 Data File : VV030150.D
 Acq On : 10 Mar 2023 13:12
 Operator : SY/MD
 Sample : 01838-07
 Misc : 25.0mL/MSVOA_V/WATER
 ALS Vial : 5 Sample Multiplier: 1

Instrument :
 MSVOA_V
 ClientSampleId :
 C1173

Quant Time: Mar 11 00:03:48 2023
 Quant Method : Z:\voasrv\HPCHEM1\MSVOA_V\Method\SFAMVTR022323WMA.M
 Quant Title : TRACE VOA SFAM1.0
 QLast Update : Sat Mar 11 00:01:55 2023
 Response via : Initial Calibration

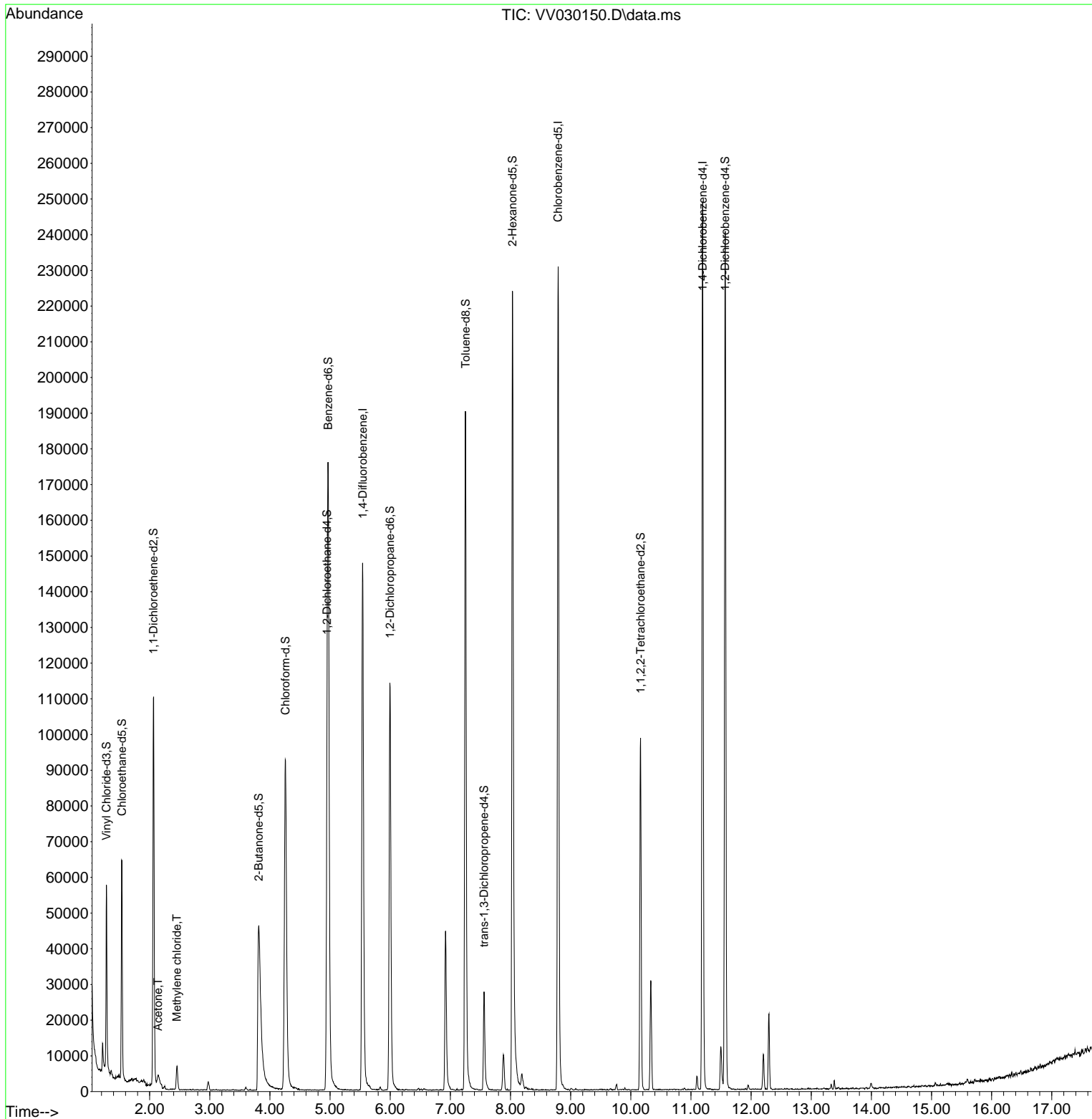
Compound	R.T.	QIon	Response	Conc	Units	Dev(Min)
Internal Standards						
1) 1,4-Difluorobenzene	5.542	114	138310	5.000	ug/L	0.00
28) Chlorobenzene-d5	8.793	117	139390	5.000	ug/L	0.00
58) 1,4-Dichlorobenzene-d4	11.194	152	72127	5.000	ug/L	0.00
System Monitoring Compounds						
4) Vinyl Chloride-d3	1.282	65	33630	3.758	ug/L	0.00
Spiked Amount	5.000	Range 40 - 130	Recovery	=	75.200%	
7) Chloroethane-d5	1.539	69	41258	4.911	ug/L	0.00
Spiked Amount	5.000	Range 65 - 130	Recovery	=	98.200%	
11) 1,1-Dichloroethene-d2	2.063	63	58188	3.163	ug/L	0.00
Spiked Amount	5.000	Range 60 - 125	Recovery	=	63.200%	
20) 2-Butanone-d5	3.815	46	99658	60.399	ug/L	0.00
Spiked Amount	50.000	Range 40 - 130	Recovery	=	120.800%	
24) Chloroform-d	4.256	84	103931	5.685	ug/L	0.00
Spiked Amount	5.000	Range 70 - 125	Recovery	=	113.800%	
26) 1,2-Dichloroethane-d4	4.950	65	44693	5.989	ug/L	0.00
Spiked Amount	5.000	Range 70 - 130	Recovery	=	119.800%	
32) Benzene-d6	4.970	84	174060	4.641	ug/L	0.00
Spiked Amount	5.000	Range 70 - 125	Recovery	=	92.800%	
36) 1,2-Dichloropropane-d6	5.995	67	59401	5.264	ug/L	0.00
Spiked Amount	5.000	Range 60 - 140	Recovery	=	105.200%	
41) Toluene-d8	7.252	98	141955	3.993	ug/L	0.00
Spiked Amount	5.000	Range 70 - 130	Recovery	=	79.800%	
43) trans-1,3-Dichloroprop...	7.561	79	18290	4.738	ug/L	0.00
Spiked Amount	5.000	Range 55 - 130	Recovery	=	94.800%	
46) 2-Hexanone-d5	8.034	63	88022	55.113	ug/L	0.00
Spiked Amount	50.000	Range 45 - 130	Recovery	=	110.220%	
56) 1,1,2,2-Tetrachloroeth...	10.162	84	49203	6.129	ug/L	0.00
Spiked Amount	5.000	Range 65 - 120	Recovery	=	122.600%#	
66) 1,2-Dichlorobenzene-d4	11.571	152	66268	5.430	ug/L	0.00
Spiked Amount	5.000	Range 80 - 120	Recovery	=	108.600%	
Target Compounds						
13) Acetone	2.140	43	5578	4.574	ug/L #	49
16) Methylene chloride	2.455	84	3177	0.280	ug/L	96

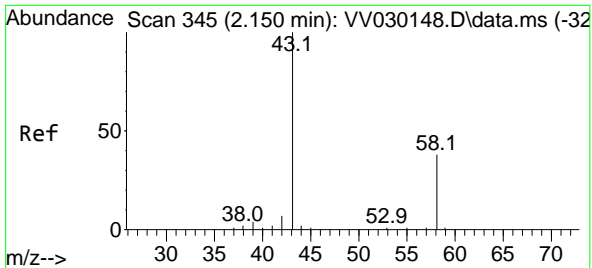
(#) = qualifier out of range (m) = manual integration (+) = signals summed

Data Path : Z:\voasrv\HPCHEM1\MSVOA_V\Data\VV031023\
 Data File : VV030150.D
 Acq On : 10 Mar 2023 13:12
 Operator : SY/MD
 Sample : 01838-07
 Misc : 25.0mL/MSVOA_V/WATER
 ALS Vial : 5 Sample Multiplier: 1

Instrument :
 MSVOA_V
 ClientSampleId :
 C1173

Quant Time: Mar 11 00:03:48 2023
 Quant Method : Z:\voasrv\HPCHEM1\MSVOA_V\Method\SFAMVTR022323WMA.M
 Quant Title : TRACE VOA SFAM1.0
 QLast Update : Sat Mar 11 00:01:55 2023
 Response via : Initial Calibration

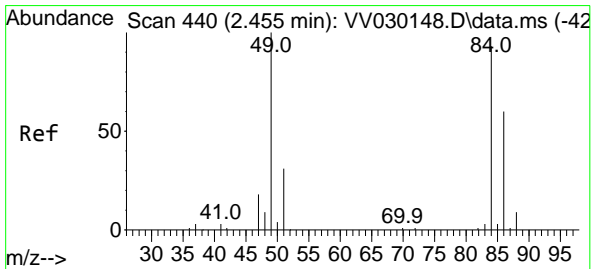
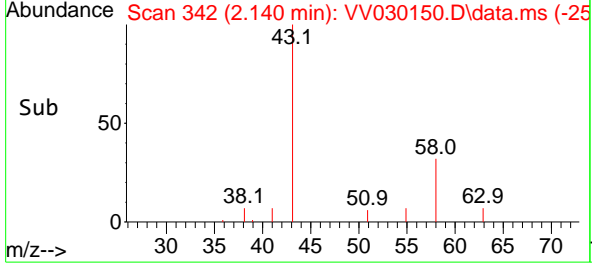
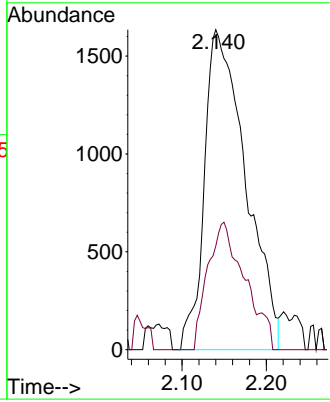
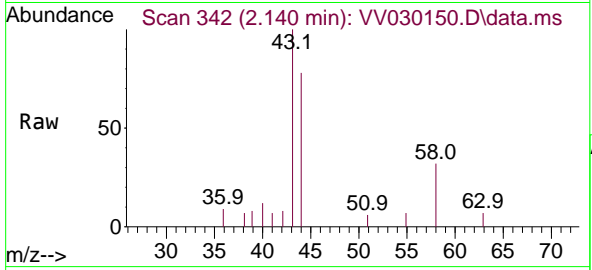




#13
 Acetone
 Concen: 4.574 ug/L
 RT: 2.140 min Scan# 342
 Delta R.T. -0.010 min
 Lab File: VV030150.D
 Acq: 10 Mar 2023 13:12

Instrument : MSVOA_V
 ClientSampleId : C1173

Tgt Ion	Resp	Ion Ratio	Lower	Upper
43	5578	100		
58		35.8	0.0	29.4#



#16
 Methylene chloride
 Concen: 0.280 ug/L
 RT: 2.455 min Scan# 440
 Delta R.T. 0.000 min
 Lab File: VV030150.D
 Acq: 10 Mar 2023 13:12

Tgt Ion	Resp	Ion Ratio	Lower	Upper
84	3177	100		
86		66.6	44.7	83.1
49		107.4	78.8	146.3

