

Data File : VV009638.D
 Acq On : 13 Mar 2019 16:33
 Operator : SY/MD
 Sample : VV0313SBL01
 Misc : 5.00G/10ML/MSVOA_V/SOIL
 ALS Vial : 1 Sample Multiplier: 1

Instrument :
 MSVOA_V
 ClientSampleId :
 VBLK61

Quant Time: Mar 14 07:40:00 2019
 Quant Method : Z:\VOASRV\HPCHEM1\MSVOA_V\METHOD\SOM2VLM031319S.M
 Quant Title : VOC Analysis
 QLast Update : Thu Mar 14 07:37:27 2019
 Response via : Initial Calibration

Internal Standards	R.T.	QIon	Response	Conc	Units	Dev(Min)
1) 1,4-Difluorobenzene	5.67	114	149847	25.00	ug/L	0.00
28) Chlorobenzene-d5	8.90	117	146188	25.00	ug/L	0.00
60) 1,4-Dichlorobenzene-d4	11.30	152	60623	25.00	ug/L	0.00

System Monitoring Compounds

4) Vinyl Chloride-d3	1.32	65	44562	23.26	ug/L	0.00
Spiked Amount	25.000	Range	30 - 150	Recovery	=	93.04%
7) Chloroethane-d5	1.57	69	45380	19.20	ug/L	0.00
Spiked Amount	25.000	Range	30 - 150	Recovery	=	76.80%
10) 1,1-Dichloroethene-d2	2.13	63	90373	17.45	ug/L	0.00
Spiked Amount	25.000	Range	45 - 110	Recovery	=	69.80%
20) 2-Butanone-d5	3.93	46	28705	57.19	ug/L	0.00
Spiked Amount	50.000	Range	20 - 135	Recovery	=	114.38%
24) Chloroform-d	4.40	84	88113	23.07	ug/L	0.00
Spiked Amount	25.000	Range	40 - 150	Recovery	=	92.28%
26) 1,2-Dichloroethane-d4	5.08	65	59002	27.30	ug/L	0.00
Spiked Amount	25.000	Range	70 - 130	Recovery	=	109.20%
29) Benzene-d6	5.10	84	195271	25.47	ug/L	0.00
Spiked Amount	25.000	Range	20 - 135	Recovery	=	101.88%
33) 1,2-Dichloropropane-d6	6.12	67	59855	26.71	ug/L	0.00
Spiked Amount	25.000	Range	70 - 120	Recovery	=	106.84%
37) Toluene-d8	7.36	98	191436	25.80	ug/L	0.00
Spiked Amount	25.000	Range	30 - 130	Recovery	=	103.20%
38) trans-1,3-Dichloropropene-	7.67	79	25052	24.33	ug/L	0.00
Spiked Amount	25.000	Range	30 - 135	Recovery	=	97.32%
39) 2-Hexanone-d5	8.13	63	22047	53.44	ug/L	0.00
Spiked Amount	50.000	Range	20 - 135	Recovery	=	106.88%
48) 1,1,2,2-Tetrachloroethane-	10.26	84	54913	25.88	ug/L	0.00
Spiked Amount	25.000	Range	45 - 120	Recovery	=	103.52%
61) 1,2-Dichlorobenzene-d4	11.68	152	61420	26.16	ug/L	0.00
Spiked Amount	25.000	Range	75 - 120	Recovery	=	104.64%

Target Compounds

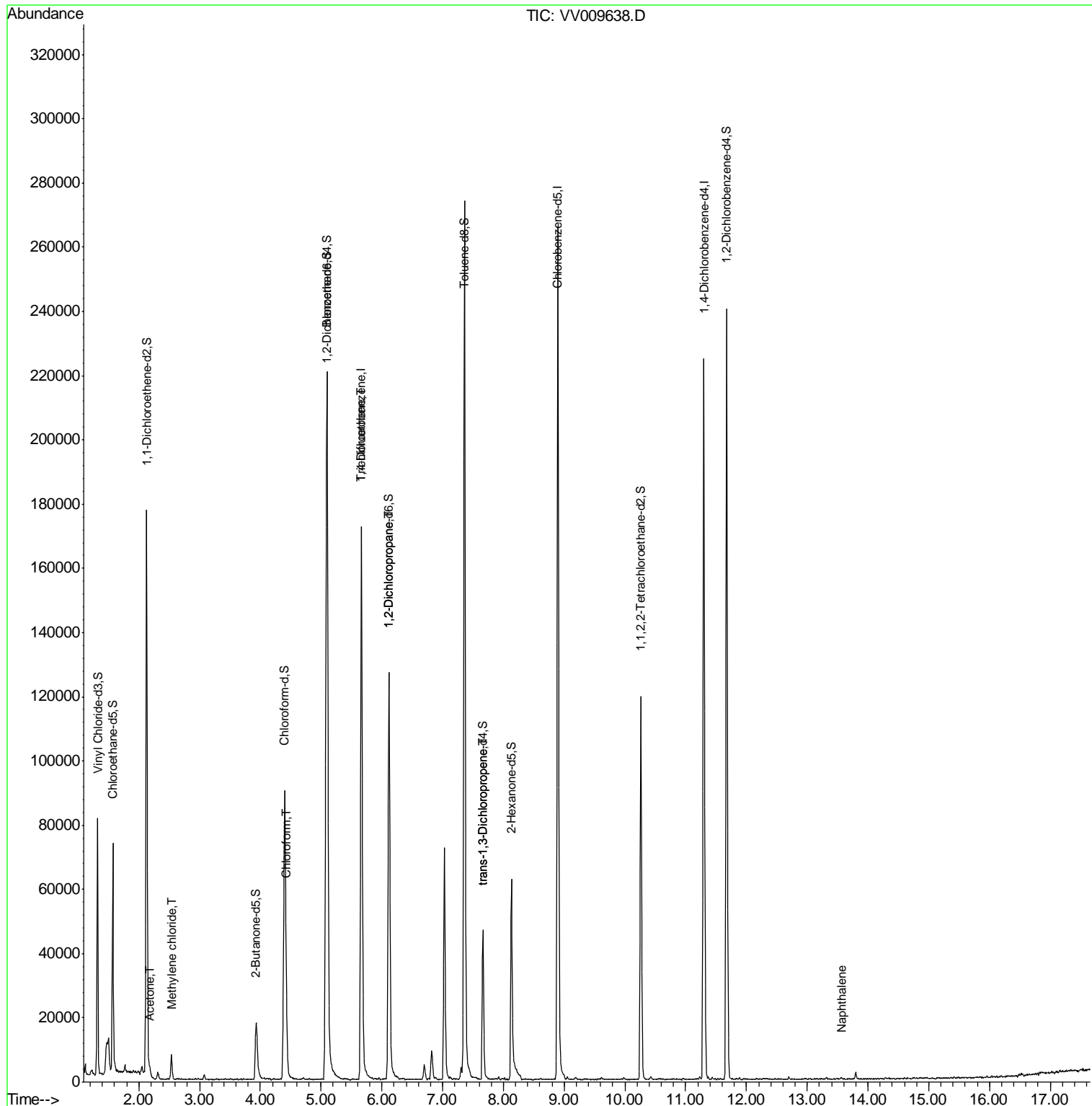
						Qvalue
13) Acetone	2.19	43	699	1.155	ug/L	84
16) Methylene chloride	2.54	84	3048	1.397	ug/L	99
25) Chloroform	4.43	83	7763	1.994	ug/L	95
35) Trichloroethene	5.66	95	3853	1.674	ug/L #	6
40) 1,2-Dichloropropane	6.12	63	7180	3.566	ug/L #	88
45) trans-1,3-Dichloropropene	7.67	75	1302	0.493	ug/L #	43
69) Naphthalene	13.56	128	883	0.274	ug/L #	69

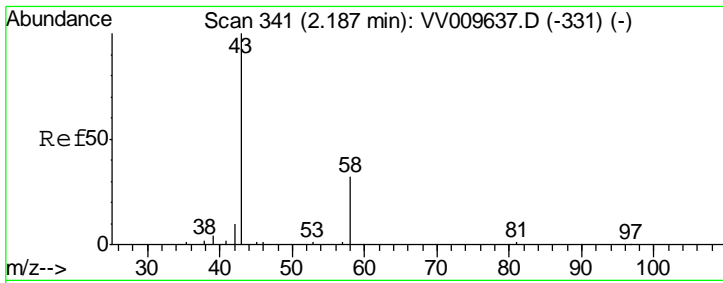
(#) = qualifier out of range (m) = manual integration (+) = signals summed

Data File : VV009638.D
Acq On : 13 Mar 2019 16:33
Operator : SY/MD
Sample : VV0313SBL01
Misc : 5.00G/10ML/MSVOA_V/SOIL
ALS Vial : 1 Sample Multiplier: 1

Instrument :
MSVOA_V
ClientSampled :
VBLK61

Quant Time: Mar 14 07:40:00 2019
Quant Method : Z:\VOASRV\HPCHEM1\MSVOA_V\METHOD\SOM2VLM031319S.M
Quant Title : VOC Analysis
QLast Update : Thu Mar 14 07:37:27 2019
Response via : Initial Calibration

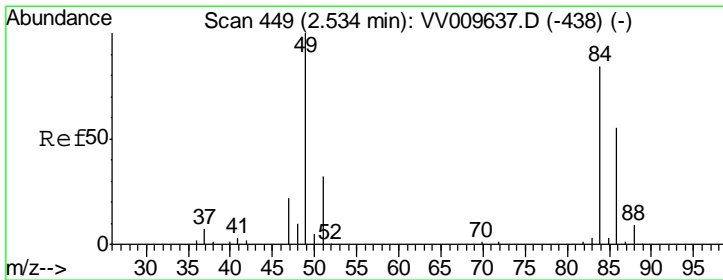
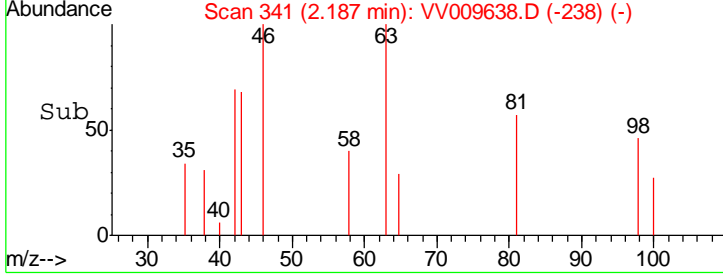
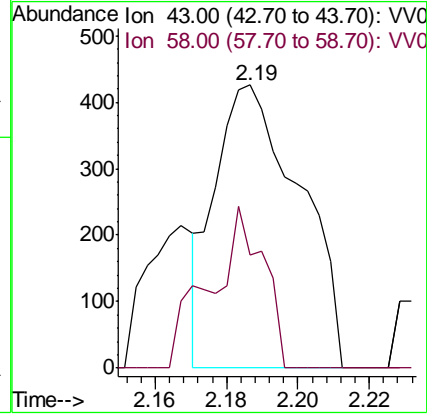
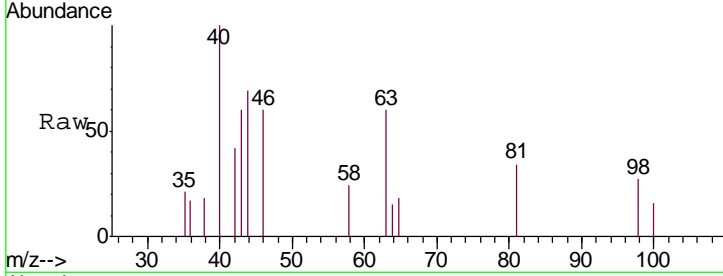




#13
 Acetone
 Concen: 1.155 ug/L
 RT: 2.19 min Scan# 341
 Delta R.T. -0.00 min
 Lab File: VV009638.D
 Acq: 13 Mar 2019 16:33

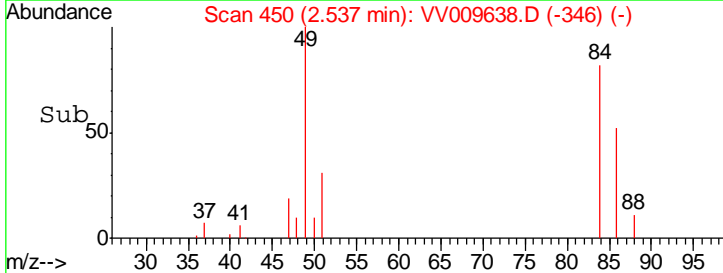
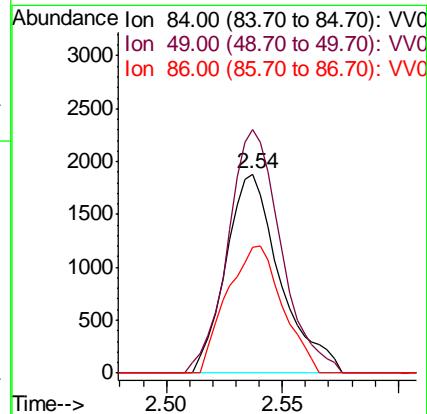
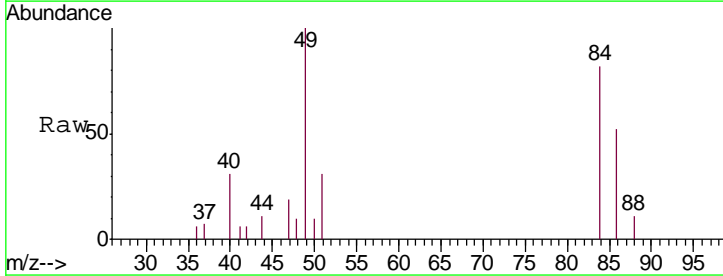
Instrument :
 MSVOA_V
 ClientSampled :
 VBLK61

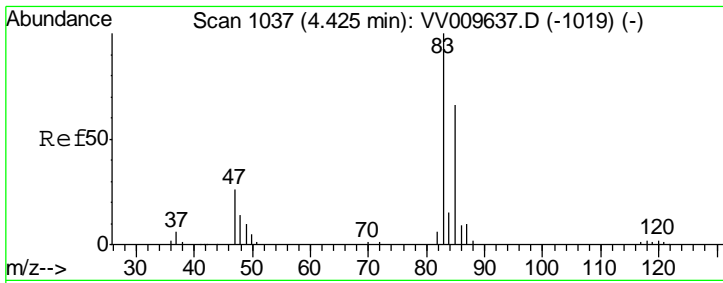
Tgt Ion	Resp	Lower	Upper
43	100		
58	23.5	0.0	64.8



#16
 Methylene chloride
 Concen: 1.397 ug/L
 RT: 2.54 min Scan# 450
 Delta R.T. 0.00 min
 Lab File: VV009638.D
 Acq: 13 Mar 2019 16:33

Tgt Ion	Resp	Lower	Upper
84	100		
49	122.4	86.1	159.9
86	63.3	45.2	84.0

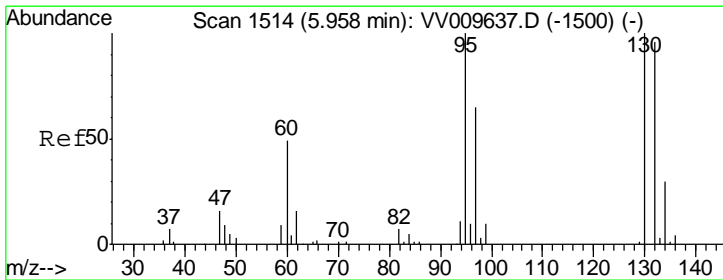
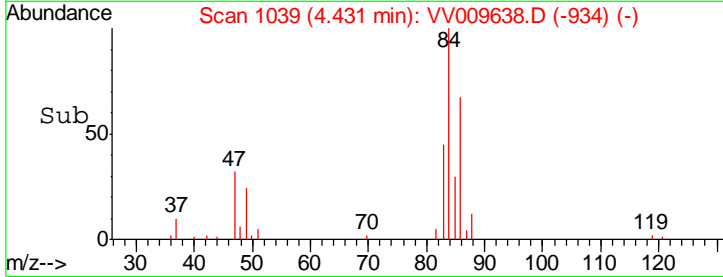
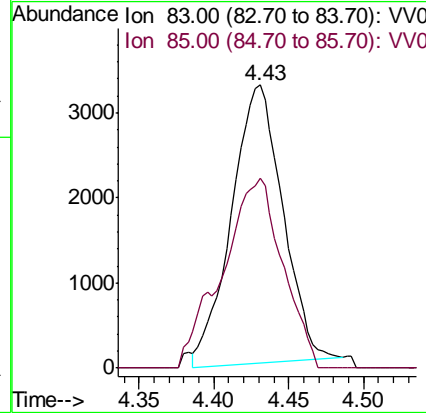
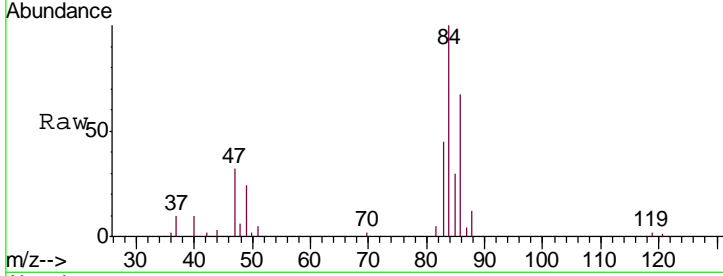




#25
 Chloroform
 Concen: 1.994 ug/L
 RT: 4.43 min Scan# 1039
 Delta R.T. 0.01 min
 Lab File: VV009638.D
 Acq: 13 Mar 2019 16:33

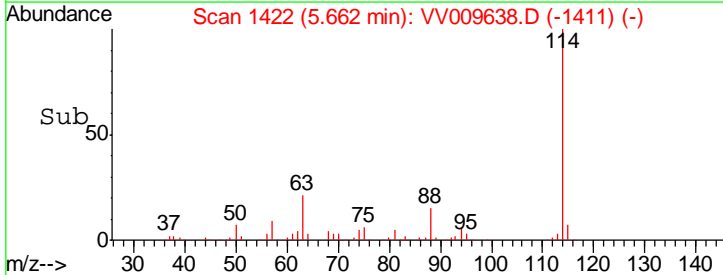
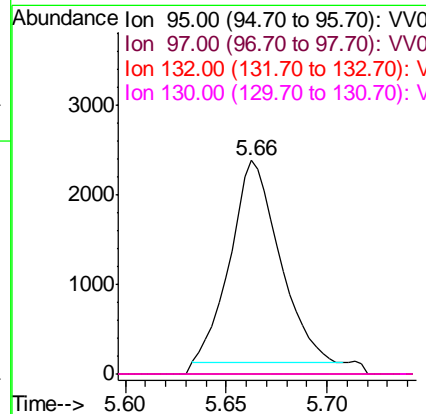
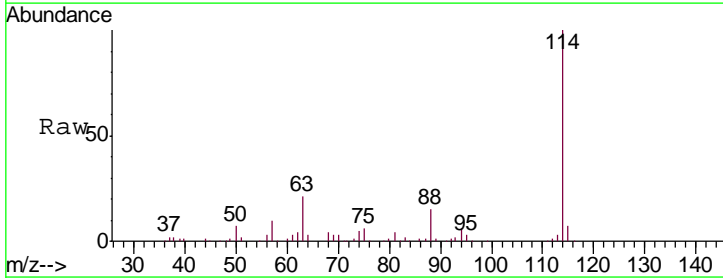
Instrument :
 MSVOA_V
 ClientSampled :
 VBLK61

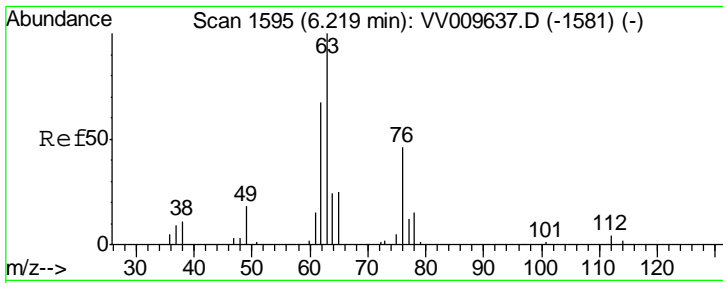
Tgt Ion	Resp	Lower	Upper
83	7763		
83	100		
85	70.0	46.4	86.2



#35
 Trichloroethene
 Concen: 1.674 ug/L
 RT: 5.66 min Scan# 1422
 Delta R.T. -0.30 min
 Lab File: VV009638.D
 Acq: 13 Mar 2019 16:33

Tgt Ion	Resp	Lower	Upper
95	3853		
95	100		
97	0.0	44.9	83.5#
132	0.0	66.4	123.2#
130	1.8	70.2	130.4#

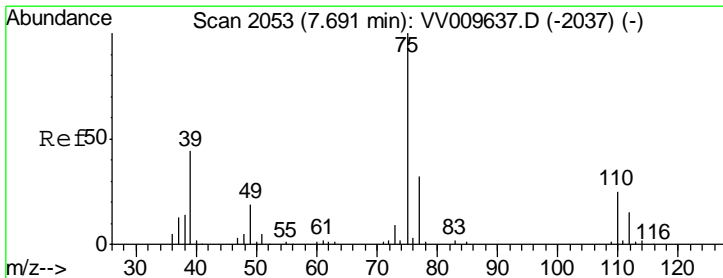
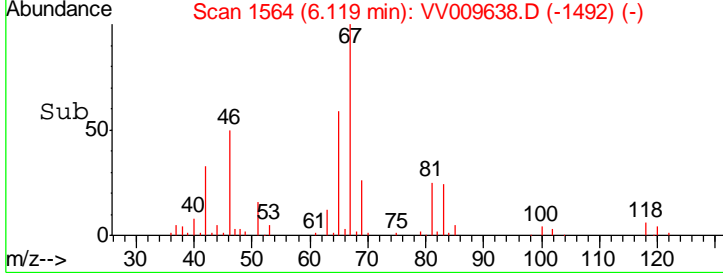
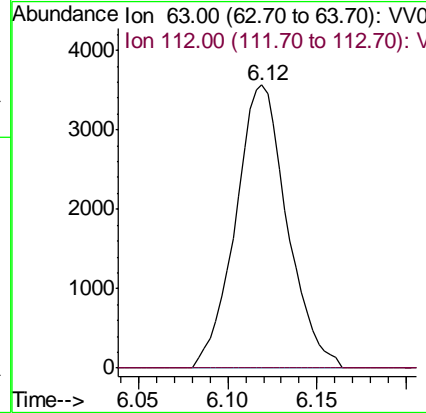
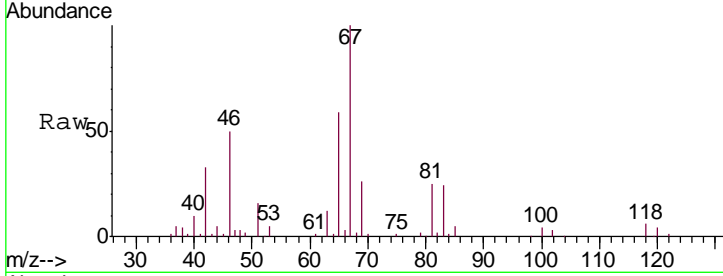




#40
 1,2-Dichloropropane
 Concen: 3.566 ug/L
 RT: 6.12 min Scan# 1564
 Delta R.T. -0.10 min
 Lab File: VV009638.D
 Acq: 13 Mar 2019 16:33

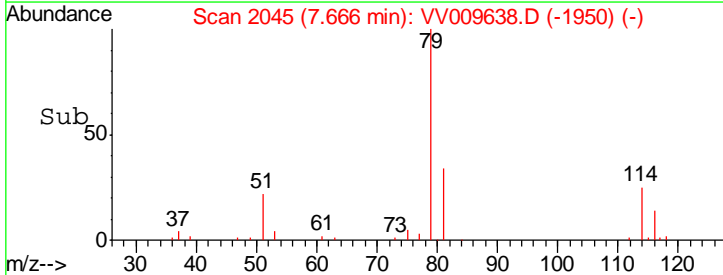
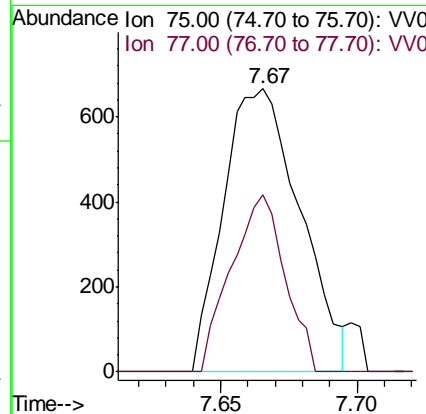
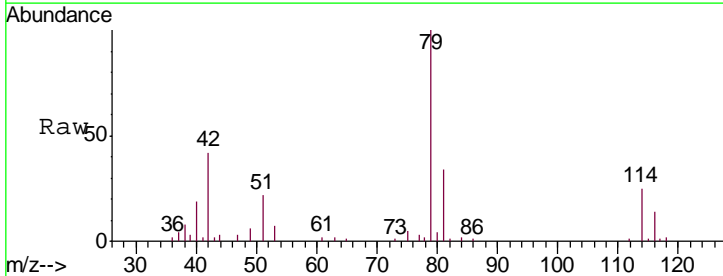
Instrument : MSVOA_V
 ClientSampled : VBLK61

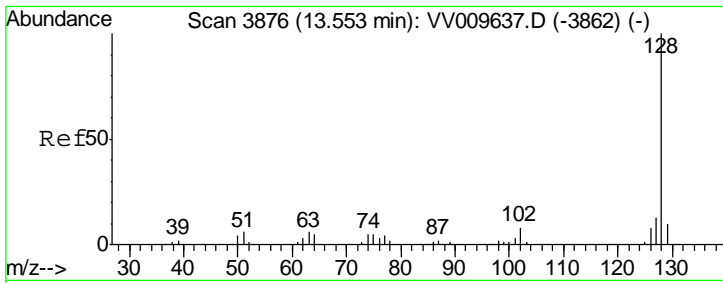
Tgt Ion	Resp	Lower	Upper
63	100		
112	0.0	3.2	4.8#



#45
 trans-1,3-Dichloropropene
 Concen: 0.493 ug/L
 RT: 7.67 min Scan# 2045
 Delta R.T. -0.03 min
 Lab File: VV009638.D
 Acq: 13 Mar 2019 16:33

Tgt Ion	Resp	Lower	Upper
75	100		
77	62.8	22.0	40.8#





#69
 Naphthalene
 Concen: 0.274 ug/L
 RT: 13.56 min Scan# 3877
 Delta R.T. 0.00 min
 Lab File: VV009638.D
 Acq: 13 Mar 2019 16:33

Instrument : MSVOA_V
 ClientSampled : VBLK61

Tgt Ion	Resp	Lower	Upper
128	100		
129	0.0	8.3	12.5#
127	0.0	11.0	16.6#

