

Data Path : Z:\voasrv\HPCHEM1\MSVOA_V\Data\VV031521\
 Data File : VV020599.D
 Acq On : 15 Mar 2021 11:56
 Operator : SY/MD
 Sample : M1655-02
 Misc : 5.0mL/MSVOA_V/WATER
 ALS Vial : 1 Sample Multiplier: 1

Instrument :
 MSVOA_V
 ClientSampleId :
 C0BA7

Integration Parameters: LSCINT.P

Integrator: RTE
 Smoothing : OFF Filtering: 5
 Sampling : 1 Min Area: 0 % of largest Peak
 Start Thrs: 0.2 Max Peaks: 100
 Stop Thrs : 0 Peak Location: TOP

If leading or trailing edge < 100 prefer < Baseline drop else tangent >
 Peak separation: 5

Method : Z:\voasrv\HPCHEM1\MSVOA_V\Method\SOMVLM031321WMA.M
 Title : VOC Analysis

Signal : TIC: VV020599.D\data.ms

peak #	R.T. min	first scan	max scan	last scan	PK TY	peak height	corr. area	corr. % max.	% of total
1	1.307	78	83	94	rVB	235673	241107	13.53%	1.764%
2	1.571	158	165	175	rVB	223630	244513	13.72%	1.788%
3	2.111	324	333	353	rVB	416924	632695	35.51%	4.628%
4	2.404	422	424	428	rVB5	6159	3809	0.21%	0.028%
5	2.580	475	479	481	rBV5	3627	3049	0.17%	0.022%
6	2.928	585	587	590	rBB4	4289	2386	0.13%	0.017%
7	3.079	631	634	635	rBV3	2980	1669	0.09%	0.012%
8	3.362	720	722	726	rVB5	5842	3670	0.21%	0.027%
9	3.413	735	738	739	rBV3	3137	1835	0.10%	0.013%
10	3.886	876	885	912	rBV	130216	366899	20.59%	2.684%
11	4.224	986	990	992	rBV5	4823	3526	0.20%	0.026%
12	4.349	1018	1029	1052	rVB	303690	725423	40.72%	5.306%
13	4.699	1135	1138	1140	rBV4	6555	3698	0.21%	0.027%
14	5.047	1232	1246	1271	rBV3	701240	1781659	100.00%	13.032%
15	5.619	1412	1424	1444	rBV	552424	1089057	61.13%	7.966%
16	5.822	1484	1487	1489	rBV4	3455	2253	0.13%	0.016%
17	6.072	1554	1565	1582	rBV2	412467	820865	46.07%	6.004%
18	6.522	1702	1705	1709	rBV5	4297	4486	0.25%	0.033%
19	6.648	1741	1744	1750	rVB7	6330	4999	0.28%	0.037%
20	6.892	1818	1820	1825	rBV6	2602	2517	0.14%	0.018%
21	6.944	1834	1836	1839	rBV4	4090	2783	0.16%	0.020%
22	6.989	1841	1850	1866	rVV2	209321	370971	20.82%	2.713%
23	7.320	1941	1953	1972	rBV	786662	1347359	75.62%	9.855%
24	7.625	2040	2048	2062	rBV	146154	246312	13.82%	1.802%
25	7.879	2122	2127	2131	rBV7	3973	3662	0.21%	0.027%
26	7.931	2140	2143	2144	rBV3	3837	2216	0.12%	0.016%
27	8.092	2182	2193	2222	rBV2	422337	833499	46.78%	6.097%
28	8.661	2368	2370	2376	rVB6	3378	2237	0.13%	0.016%
29	8.857	2418	2431	2444	rBV	889729	1413505	79.34%	10.339%
30	8.995	2471	2474	2478	rBV6	4865	4471	0.25%	0.033%
31	9.024	2480	2483	2486	rVB5	4000	2359	0.13%	0.017%
32	9.046	2486	2490	2492	rBV5	3048	1813	0.10%	0.013%
33	9.172	2527	2529	2535	rVB6	3740	2634	0.15%	0.019%
34	9.423	2603	2607	2610	rBV5	3315	2760	0.15%	0.020%
35	9.490	2625	2628	2629	rBV3	2900	1456	0.08%	0.011%
36	9.821	2728	2731	2734	rVB5	6027	3918	0.22%	0.029%

Data Path : Z:\voasrv\HPCHEM1\MSVOA_V\Data\VW031521\
 Data File : VW020599.D
 Acq On : 15 Mar 2021 11:56
 Operator : SY/MD
 Sample : M1655-02
 Misc : 5.0mL/MSVOA_V/WATER
 ALS Vial : 1 Sample Multiplier: 1

Instrument :
 MSVOA_V
 ClientSampleId :
 C0BA7

Integration Parameters: LSCINT.P

Integrator: RTE
 Smoothing : OFF
 Sampling : 1
 Start Thrs : 0.2
 Stop Thrs : 0

Filtering: 5
 Min Area: 0 % of largest Peak
 Max Peaks: 100
 Peak Location: TOP

If leading or trailing edge < 100 prefer < Baseline drop else tangent >
 Peak separation: 5

Method : Z:\voasrv\HPCHEM1\MSVOA_V\Method\SOMVLM031321WMA.M
 Title : VOC Analysis

37	9.837	2734	2736	2738	rBV3	4698	2855	0.16%	0.021%
38	9.905	2755	2757	2761	rVB4	5957	4164	0.23%	0.030%
39	9.924	2761	2763	2766	rBV4	2297	1717	0.10%	0.013%
40	9.940	2766	2768	2771	rVB4	4480	2333	0.13%	0.017%
41	9.972	2776	2778	2780	rBV3	2826	1710	0.10%	0.013%
42	10.027	2793	2795	2797	rBV3	2756	1742	0.10%	0.013%
43	10.059	2801	2805	2809	rBV6	2881	2966	0.17%	0.022%
44	10.104	2817	2819	2824	rVB5	4473	3393	0.19%	0.025%
45	10.136	2824	2829	2831	rBV6	3019	2632	0.15%	0.019%
46	10.220	2839	2855	2868	rBV	492539	788918	44.28%	5.771%
47	10.390	2901	2908	2916	rVB	10350	16160	0.91%	0.118%
48	10.426	2916	2919	2921	rBV4	3382	2497	0.14%	0.018%
49	10.458	2924	2929	2932	rVB7	4213	3540	0.20%	0.026%
50	10.577	2962	2966	2968	rVB5	3202	2138	0.12%	0.016%
51	10.603	2968	2974	2982	rBV5	3638	6626	0.37%	0.048%
52	10.673	2994	2996	2998	rBV3	3536	1896	0.11%	0.014%
53	10.757	3020	3022	3027	rVB6	2542	1907	0.11%	0.014%
54	10.780	3027	3029	3034	rBV5	4176	3610	0.20%	0.026%
55	10.831	3042	3045	3048	rBV5	4919	4753	0.27%	0.035%
56	10.889	3061	3063	3066	rBV4	2477	1647	0.09%	0.012%
57	10.985	3089	3093	3094	rBV4	4351	2895	0.16%	0.021%
58	11.075	3117	3121	3125	rVB6	4357	4395	0.25%	0.032%
59	11.098	3125	3128	3129	rBV3	2923	1858	0.10%	0.014%
60	11.153	3141	3145	3150	rBV7	4190	4630	0.26%	0.034%
61	11.255	3166	3177	3192	rVV	812278	1255267	70.45%	9.182%
62	11.455	3237	3239	3243	rVB4	4945	2434	0.14%	0.018%
63	11.632	3281	3294	3311	rBV	800979	1257750	70.59%	9.200%
64	11.709	3316	3318	3326	rVB8	5861	5733	0.32%	0.042%
65	11.757	3326	3333	3334	rBV6	4231	5189	0.29%	0.038%
66	12.439	3542	3545	3549	rBV5	4148	3279	0.18%	0.024%
67	12.622	3600	3602	3605	rVB4	5193	2767	0.16%	0.020%
68	12.641	3605	3608	3609	rBV3	3140	1706	0.10%	0.012%
69	12.812	3659	3661	3665	rBV5	3014	2425	0.14%	0.018%
70	12.918	3690	3694	3696	rBV5	6009	4931	0.28%	0.036%
71	12.963	3704	3708	3711	rVB6	3852	2962	0.17%	0.022%
72	12.992	3714	3717	3720	rBV5	4134	3441	0.19%	0.025%
73	13.027	3725	3728	3730	rVV4	3133	1835	0.10%	0.013%
74	13.046	3730	3734	3738	rVB6	3707	3591	0.20%	0.026%
75	13.095	3745	3749	3750	rBV4	2900	2341	0.13%	0.017%
76	13.130	3757	3760	3763	rVB5	3501	2280	0.13%	0.017%

Data Path : Z:\voasrv\HPCHEM1\MSVOA_V\Data\VW031521\
 Data File : VW020599.D
 Acq On : 15 Mar 2021 11:56
 Operator : SY/MD
 Sample : M1655-02
 Misc : 5.0mL/MSVOA_V/WATER
 ALS Vial : 1 Sample Multiplier: 1

Instrument :
 MSVOA_V
 ClientSampleId :
 C0BA7

Integration Parameters: LSCINT.P

Integrator: RTE
 Smoothing : OFF Filtering: 5
 Sampling : 1 Min Area: 0 % of largest Peak
 Start Thrs: 0.2 Max Peaks: 100
 Stop Thrs : 0 Peak Location: TOP

If leading or trailing edge < 100 prefer < Baseline drop else tangent >
 Peak separation: 5

Method : Z:\voasrv\HPCHEM1\MSVOA_V\Method\SOMVLM031321WMA.M
 Title : VOC Analysis

77	13.162	3767	3770	3772	rBV4	3759	1641	0.09%	0.012%
78	13.377	3835	3837	3839	rBV3	3925	1769	0.10%	0.013%
79	13.468	3861	3865	3867	rBV4	3560	2321	0.13%	0.017%
80	13.509	3874	3878	3880	rBV4	4292	2419	0.14%	0.018%
81	13.554	3890	3892	3898	rBV6	2572	1695	0.10%	0.012%
82	13.699	3933	3937	3939	rBV5	3588	2113	0.12%	0.015%
83	13.712	3939	3941	3944	rBV3	2390	1478	0.08%	0.011%
84	13.783	3959	3963	3965	rBV4	3170	2298	0.13%	0.017%
85	13.869	3988	3990	3996	rBV7	2828	2530	0.14%	0.019%
86	13.934	4007	4010	4014	rBV6	3167	2868	0.16%	0.021%
87	14.062	4044	4050	4053	rBV7	3576	5153	0.29%	0.038%
88	14.107	4061	4064	4070	rVB7	4458	3732	0.21%	0.027%
89	14.159	4077	4080	4083	rBV5	4682	2767	0.16%	0.020%
90	14.300	4122	4124	4128	rVB4	3493	2471	0.14%	0.018%
91	14.323	4128	4131	4132	rBV3	2557	1787	0.10%	0.013%
92	14.368	4142	4145	4147	rBV4	3704	1860	0.10%	0.014%
93	14.387	4149	4151	4153	rBV3	2877	1869	0.10%	0.014%
94	14.451	4167	4171	4173	rBV5	3811	2045	0.11%	0.015%
95	14.471	4175	4177	4179	rBV3	4180	1802	0.10%	0.013%
96	14.606	4215	4219	4222	rBV6	3851	3542	0.20%	0.026%
97	14.802	4278	4280	4282	rBV3	3702	2014	0.11%	0.015%
98	15.477	4486	4490	4493	rBV5	4936	4629	0.26%	0.034%
99	16.101	4682	4684	4688	rBV5	3798	3073	0.17%	0.022%
100	16.329	4753	4755	4759	rVB5	5415	2617	0.15%	0.019%

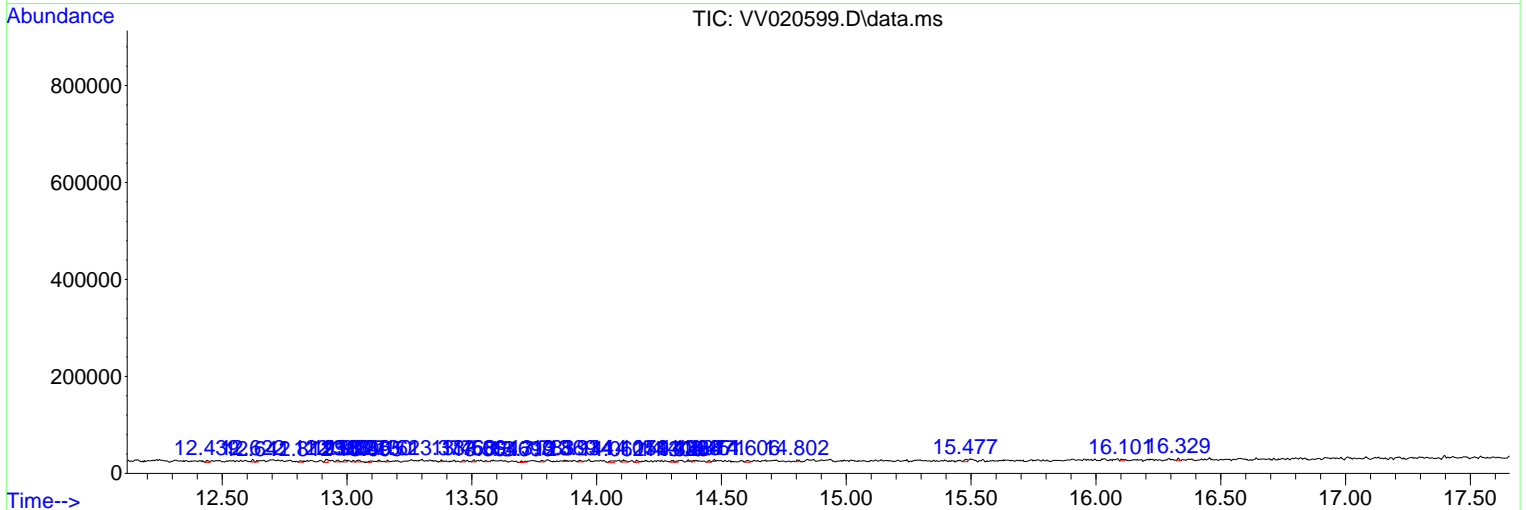
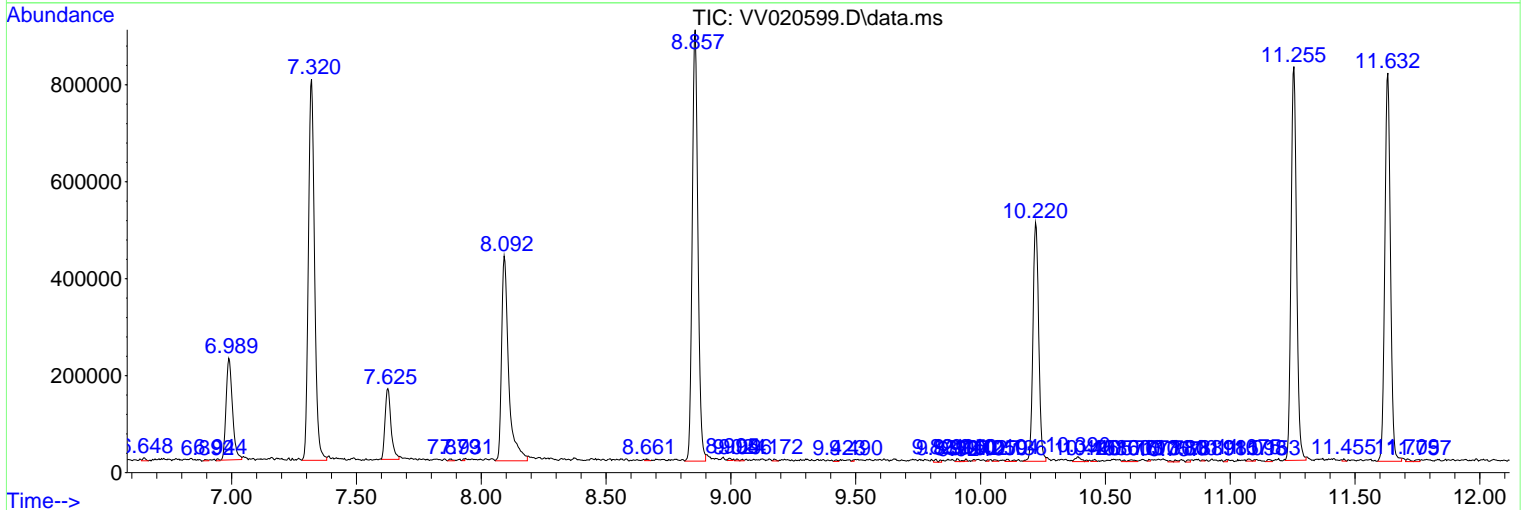
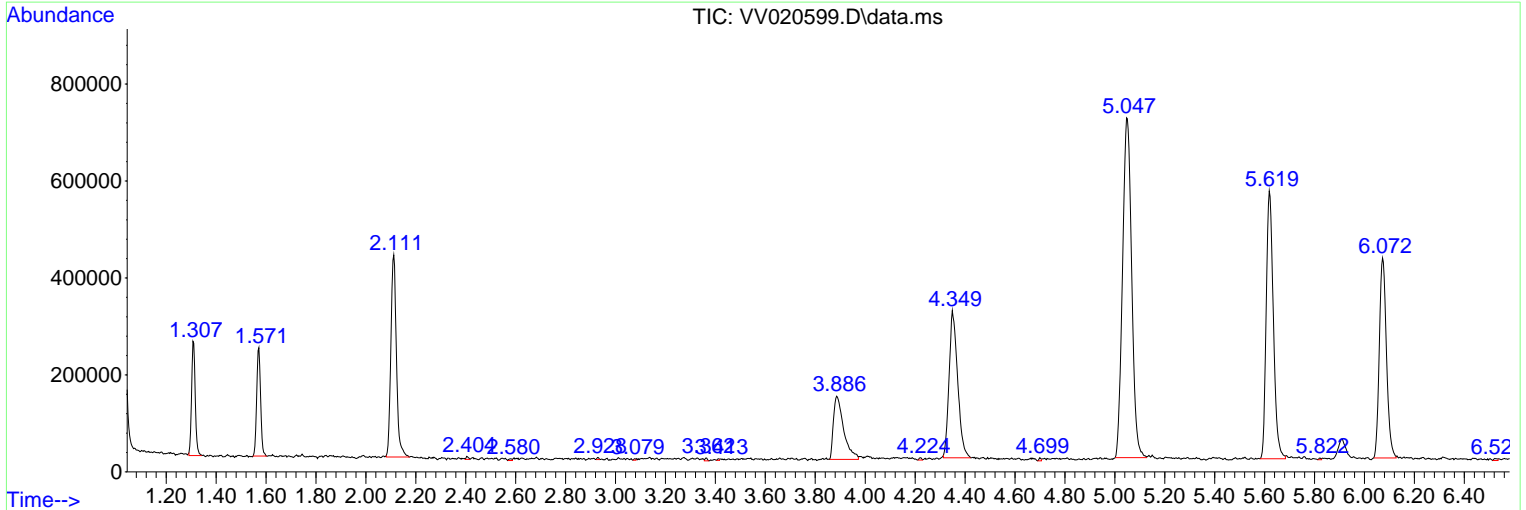
Sum of corrected areas: 13671476

Data Path : Z:\voasrv\HPCHEM1\MSVOA_V\Data\VV031521\
 Data File : VV020599.D
 Acq On : 15 Mar 2021 11:56
 Operator : SY/MD
 Sample : M1655-02
 Misc : 5.0mL/MSVOA_V/WATER
 ALS Vial : 1 Sample Multiplier: 1

Instrument :
 MSVOA_V
Client Sampled :
 C0BA7

Quant Method : Z:\voasrv\HPCHEM1\MSVOA_V\Method\SOMVLM031321WMA.M
 Quant Title : VOC Analysis

TIC Library : C:\DATABASE\NIST11.L
 TIC Integration Parameters: LSCINT.P



Data Path : Z:\voasrv\HPCHEM1\MSVOA_V\Data\VW031521\
Data File : VW020599.D
Acq On : 15 Mar 2021 11:56
Operator : SY/MD
Sample : M1655-02
Misc : 5.0mL/MSVOA_V/WATER
ALS Vial : 1 Sample Multiplier: 1

Instrument :
MSVOA_V
ClientSampleId :
C0BA7

Quant Method : Z:\voasrv\HPCHEM1\MSVOA_V\Method\SOMVLM031321WMA.M
Quant Title : VOC Analysis

TIC Library : C:\DATABASE\NIST11.L
TIC Integration Parameters: LSCINT.P

No Library Search Compounds Detected

Data Path : Z:\voasrv\HPCHEM1\MSVOA_V\Data\VW031521\
Data File : VW020599.D
Acq On : 15 Mar 2021 11:56
Operator : SY/MD
Sample : M1655-02
Misc : 5.0mL/MSVOA_V/WATER
ALS Vial : 1 Sample Multiplier: 1

Instrument :
MSVOA_V
ClientSampled :
C0BA7

Quant Method : Z:\voasrv\HPCHEM1\MSVOA_V\Method\SOMVLM031321WMA.M
Quant Title : VOC Analysis

TIC Library : C:\DATABASE\NIST11.L
TIC Integration Parameters: LSCINT.P

TIC Top Hit name	RT	EstConc	Units	Response	--Internal Standard--		
					#	RT	Resp Conc
