

Data Path : Z:\voasrv\HPCHEM1\MSVOA_V\Data\VV031524\
 Data File : VV034653.D
 Acq On : 15 Mar 2024 15:06
 Operator : SY/MD
 Sample : P1752-20
 Misc : 5.0mL/MSVOA_V/WATER
 ALS Vial : 17 Sample Multiplier: 1

Instrument :
 MSVOA_V
 ClientSampleId :
 YCL52

Integration Parameters: LSCINT.P

Integrator: RTE
 Smoothing : OFF Filtering: 5
 Sampling : 1 Min Area: 0 % of largest Peak
 Start Thrs: 0.2 Max Peaks: 100
 Stop Thrs : 0 Peak Location: TOP

If leading or trailing edge < 100 prefer < Baseline drop else tangent >
 Peak separation: 5

Method : Z:\voasrv\HPCHEM1\MSVOA_V\Method\SFAMVLM022924WMA.M
 Title : VOC Analysis

Signal : TIC: VV034653.D\data.ms

peak #	R.T. min	first scan	max scan	last scan	PK TY	peak height	corr. area	corr. % max.	% of total
1	1.278	67	74	87	rBV	158263	165070	13.01%	1.522%
2	1.532	146	153	165	rVB	148540	170255	13.42%	1.570%
3	2.060	306	317	331	rBV	287504	421297	33.21%	3.886%
4	2.278	365	385	451	rBV	200738	1132207	89.26%	10.443%
5	2.879	567	572	575	rBV3	451	489	0.04%	0.005%
6	2.960	595	597	598	rBV3	267	140	0.01%	0.001%
7	3.092	633	638	639	rBV	230	170	0.01%	0.002%
8	3.172	660	663	666	rBV2	226	123	0.01%	0.001%
9	3.188	666	668	669	rBV2	175	83	0.01%	0.001%
10	3.230	677	681	682	rVV	148	110	0.01%	0.001%
11	3.256	685	689	693	rBV2	286	263	0.02%	0.002%
12	3.365	720	723	730	rBV2	304	340	0.03%	0.003%
13	3.423	737	741	744	rBV	168	132	0.01%	0.001%
14	3.510	765	768	772	rVB2	124	96	0.01%	0.001%
15	3.535	773	776	783	rBV2	255	258	0.02%	0.002%
16	3.625	801	804	807	rBV2	115	73	0.01%	0.001%
17	3.735	836	838	840	rVB2	167	86	0.01%	0.001%
18	3.793	847	856	903	rBV	102110	309091	24.37%	2.851%
19	4.249	983	998	1028	rBV	205561	541198	42.67%	4.992%
20	4.805	1168	1171	1174	rBV2	348	277	0.02%	0.003%
21	4.863	1187	1189	1191	rBV2	307	168	0.01%	0.002%
22	4.957	1201	1218	1250	rBV2	479124	1268448	100.00%	11.699%
23	5.281	1317	1319	1323	rVB2	442	190	0.01%	0.002%
24	5.329	1331	1334	1337	rBV2	421	302	0.02%	0.003%
25	5.391	1350	1353	1356	rVB3	399	256	0.02%	0.002%
26	5.442	1364	1369	1371	rBV	99	104	0.01%	0.001%
27	5.484	1379	1382	1385	rBV3	376	228	0.02%	0.002%
28	5.532	1387	1397	1436	rBV	400318	825743	65.10%	7.616%
29	5.831	1480	1490	1507	rBV6	10066	22001	1.73%	0.203%
30	5.989	1526	1539	1569	rBV	280238	577660	45.54%	5.328%
31	6.320	1640	1642	1647	rVB2	198	137	0.01%	0.001%
32	6.362	1651	1655	1658	rBV2	249	175	0.01%	0.002%
33	6.384	1660	1662	1664	rBV	152	77	0.01%	0.001%
34	6.510	1695	1701	1706	rBV2	1046	1380	0.11%	0.013%
35	6.577	1718	1722	1723	rBV	524	364	0.03%	0.003%
36	6.731	1766	1770	1772	rBV2	271	171	0.01%	0.002%

Data Path : Z:\voasrv\HPCHEM1\MSVOA_V\Data\VW031524\
 Data File : VW034653.D
 Acq On : 15 Mar 2024 15:06
 Operator : SY/MD
 Sample : P1752-20
 Misc : 5.0mL/MSVOA_V/WATER
 ALS Vial : 17 Sample Multiplier: 1

Instrument :
 MSVOA_V
 ClientSampleId :
 YCL52

Integration Parameters: LSCINT.P

Integrator: RTE
 Smoothing : OFF
 Sampling : 1
 Start Thrs: 0.2
 Stop Thrs : 0

Filtering: 5
 Min Area: 0 % of largest Peak
 Max Peaks: 100
 Peak Location: TOP

If leading or trailing edge < 100 prefer < Baseline drop else tangent >
 Peak separation: 5

Method : Z:\voasrv\HPCHEM1\MSVOA_V\Method\SFAMVLM022924WMA.M
 Title : VOC Analysis

37	6.767	1779	1781	1782	rBV2	259	126	0.01%	0.001%
38	6.854	1806	1808	1811	rVB	151	90	0.01%	0.001%
39	6.915	1816	1827	1852	rBV	141143	268931	21.20%	2.480%
40	7.140	1891	1897	1905	rBV5	1060	1931	0.15%	0.018%
41	7.243	1918	1929	1956	rBV	527090	943433	74.38%	8.701%
42	7.554	2016	2026	2051	rBV	91841	170012	13.40%	1.568%
43	7.796	2100	2101	2104	rBV	192	116	0.01%	0.001%
44	7.937	2139	2145	2148	rBV3	297	305	0.02%	0.003%
45	7.956	2148	2151	2153	rBV2	183	102	0.01%	0.001%
46	8.024	2163	2172	2216	rBV	365340	709788	55.96%	6.547%
47	8.529	2326	2329	2330	rBV	305	149	0.01%	0.001%
48	8.583	2344	2346	2347	rBV	253	104	0.01%	0.001%
49	8.638	2360	2363	2365	rVB2	350	174	0.01%	0.002%
50	8.673	2370	2374	2380	rBV3	364	477	0.04%	0.004%
51	8.715	2385	2387	2389	rVB2	215	88	0.01%	0.001%
52	8.725	2389	2390	2394	rBV	257	161	0.01%	0.001%
53	8.783	2398	2408	2436	rBV	578795	960359	75.71%	8.858%
54	9.095	2502	2505	2512	rBV3	272	238	0.02%	0.002%
55	9.156	2522	2524	2526	rBV2	306	188	0.01%	0.002%
56	9.217	2534	2543	2545	rBV3	423	574	0.05%	0.005%
57	9.316	2571	2574	2581	rVB2	160	166	0.01%	0.002%
58	9.439	2609	2612	2614	rVV	169	128	0.01%	0.001%
59	9.464	2617	2620	2622	rBV2	158	101	0.01%	0.001%
60	9.532	2637	2641	2642	rBV2	170	115	0.01%	0.001%
61	9.587	2655	2658	2660	rBV	203	133	0.01%	0.001%
62	9.776	2715	2717	2720	rVB	321	102	0.01%	0.001%
63	9.818	2728	2730	2732	rBV	196	86	0.01%	0.001%
64	9.866	2742	2745	2748	rVB2	254	149	0.01%	0.001%
65	9.960	2766	2774	2777	rBV5	1231	1482	0.12%	0.014%
66	10.056	2801	2804	2807	rVB	585	286	0.02%	0.003%
67	10.078	2807	2811	2812	rBV	143	96	0.01%	0.001%
68	10.152	2822	2834	2850	rBV	369492	584789	46.10%	5.394%
69	10.320	2880	2886	2887	rBV2	609	495	0.04%	0.005%
70	10.384	2902	2906	2910	rBV2	352	298	0.02%	0.003%
71	10.445	2922	2925	2926	rBV2	168	98	0.01%	0.001%
72	10.500	2938	2942	2944	rBV	111	87	0.01%	0.001%
73	10.606	2972	2975	2980	rBV2	199	167	0.01%	0.002%
74	10.686	2996	3000	3001	rBV	180	138	0.01%	0.001%
75	10.805	3035	3037	3040	rVB	253	101	0.01%	0.001%
76	10.824	3040	3043	3045	rBV	178	107	0.01%	0.001%

Data Path : Z:\voasrv\HPCHEM1\MSVOA_V\Data\VV031524\
 Data File : VV034653.D
 Acq On : 15 Mar 2024 15:06
 Operator : SY/MD
 Sample : P1752-20
 Misc : 5.0mL/MSVOA_V/WATER
 ALS Vial : 17 Sample Multiplier: 1

Instrument :
 MSVOA_V
 ClientSampleId :
 YCL52

Integration Parameters: LSCINT.P

Integrator: RTE
 Smoothing : OFF
 Sampling : 1
 Start Thrs : 0.2
 Stop Thrs : 0

Filtering: 5
 Min Area: 0 % of largest Peak
 Max Peaks: 100
 Peak Location: TOP

If leading or trailing edge < 100 prefer < Baseline drop else tangent >
 Peak separation: 5

Method : Z:\voasrv\HPCHEM1\MSVOA_V\Method\SFAMVLM022924WMA.M
 Title : VOC Analysis

77	10.876	3055	3059	3066	rBV2	194	236	0.02%	0.002%
78	10.947	3079	3081	3082	rBV	275	90	0.01%	0.001%
79	11.185	3144	3155	3183	rBV	571728	892810	70.39%	8.235%
80	11.384	3215	3217	3218	rBV	365	198	0.02%	0.002%
81	11.422	3226	3229	3232	rBV3	233	190	0.01%	0.002%
82	11.439	3232	3234	3237	rVB2	533	229	0.02%	0.002%
83	11.461	3237	3241	3244	rBV3	425	303	0.02%	0.003%
84	11.496	3250	3252	3256	rVB2	375	140	0.01%	0.001%
85	11.561	3258	3272	3296	rBV	541929	859545	67.76%	7.928%
86	11.696	3312	3314	3319	rBV3	671	451	0.04%	0.004%
87	11.767	3334	3336	3338	rVB	297	117	0.01%	0.001%
88	11.837	3355	3358	3361	rVB	292	144	0.01%	0.001%
89	11.931	3384	3387	3389	rBV	174	96	0.01%	0.001%
90	11.953	3393	3394	3395	rVV	367	81	0.01%	0.001%
91	11.966	3395	3398	3402	rVB2	376	238	0.02%	0.002%
92	12.175	3462	3463	3465	rVB	315	118	0.01%	0.001%
93	12.197	3466	3470	3473	rBV3	386	329	0.03%	0.003%
94	12.284	3494	3497	3498	rBV	349	201	0.02%	0.002%
95	12.734	3636	3637	3639	rBV	273	114	0.01%	0.001%
96	13.075	3741	3743	3746	rBV2	251	125	0.01%	0.001%
97	13.204	3781	3783	3784	rBV	447	178	0.01%	0.002%
98	13.239	3791	3794	3796	rBV	248	157	0.01%	0.001%
99	13.918	4003	4005	4006	rBV	425	181	0.01%	0.002%
100	13.975	4021	4023	4026	rBV2	401	308	0.02%	0.003%

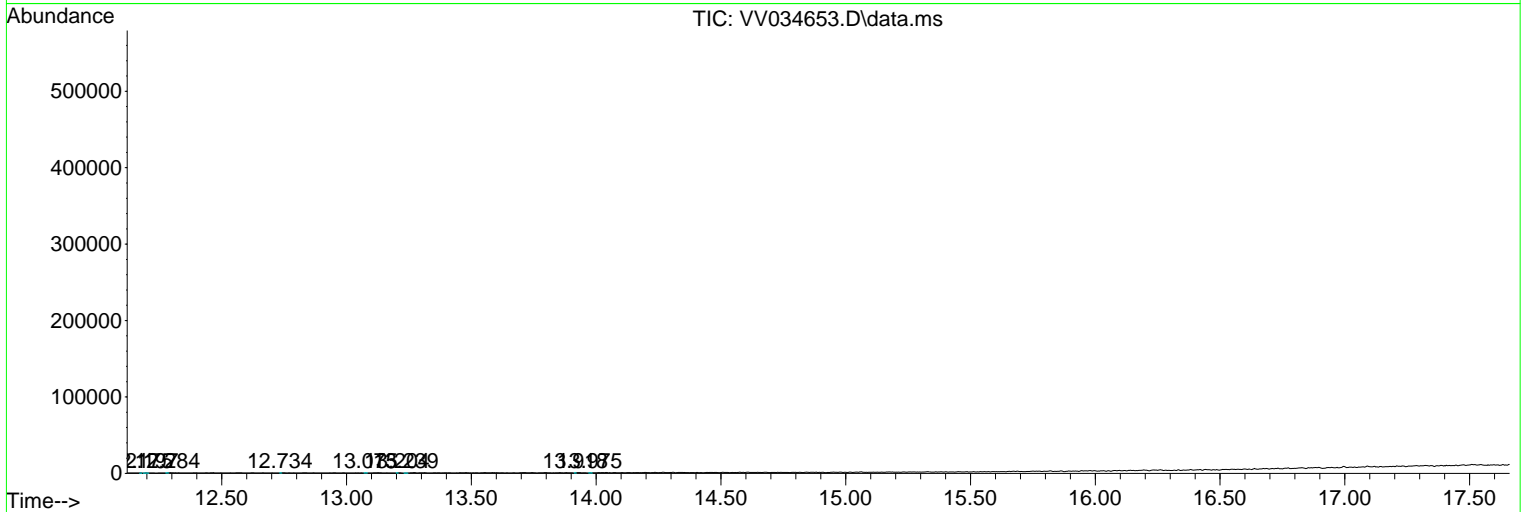
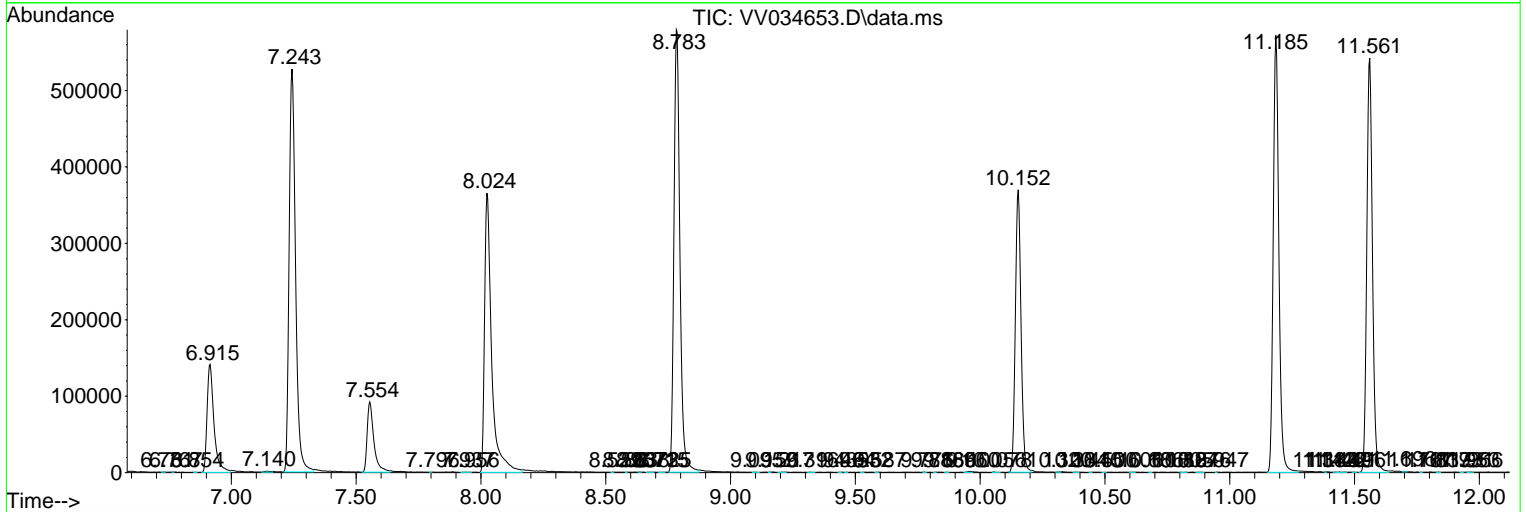
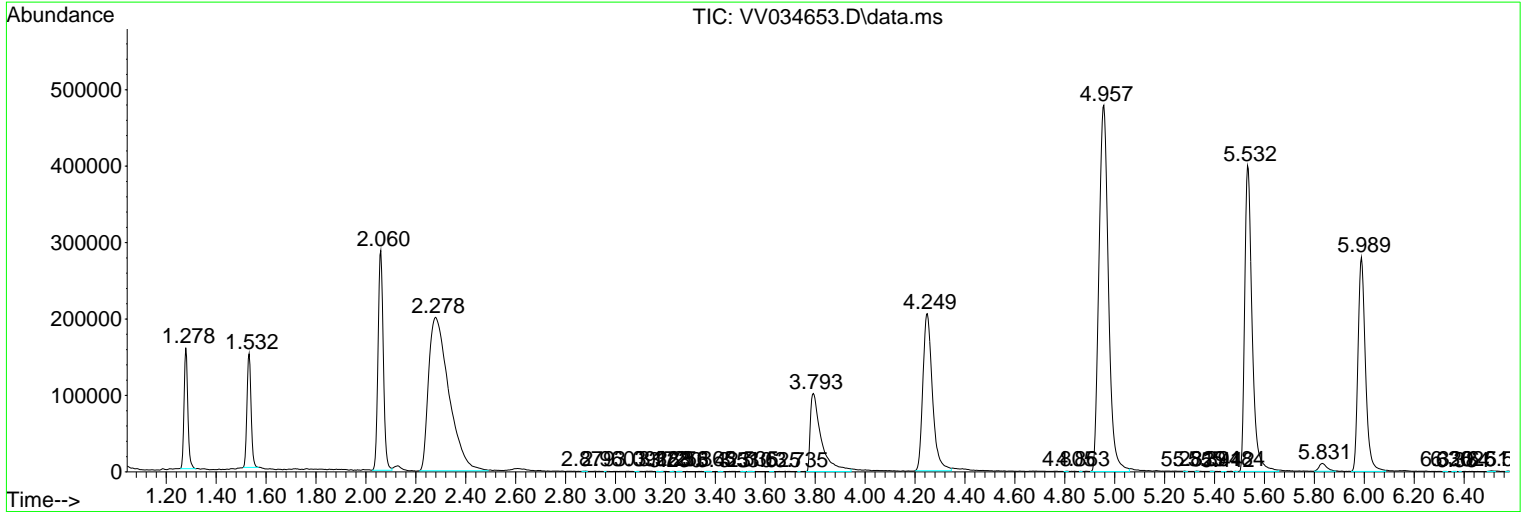
Sum of corrected areas: 10842211

Data Path : Z:\voasrv\HPCHEM1\MSVOA_V\Data\VV031524\
 Data File : VV034653.D
 Acq On : 15 Mar 2024 15:06
 Operator : SY/MD
 Sample : P1752-20
 Misc : 5.0mL/MSVOA_V/WATER
 ALS Vial : 17 Sample Multiplier: 1

Instrument :
 MSVOA_V
 ClientSampleId :
 YCL52

Quant Method : Z:\voasrv\HPCHEM1\MSVOA_V\Method\SFAMVLM022924WMA.M
 Quant Title : VOC Analysis

TIC Library : C:\Database\NIST20.L
 TIC Integration Parameters: LSCINT.P



Data Path : Z:\voasrv\HPCHEM1\MSVOA_V\Data\VV031524\
 Data File : VV034653.D
 Acq On : 15 Mar 2024 15:06
 Operator : SY/MD
 Sample : P1752-20
 Misc : 5.0mL/MSVOA_V/WATER
 ALS Vial : 17 Sample Multiplier: 1

Instrument :
 MSVOA_V
 ClientSampleId :
 YCL52

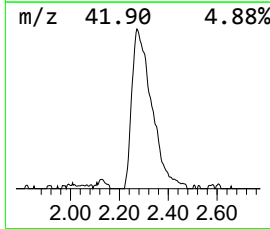
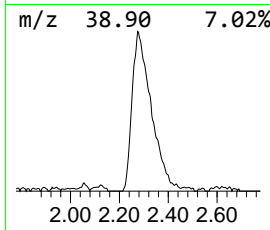
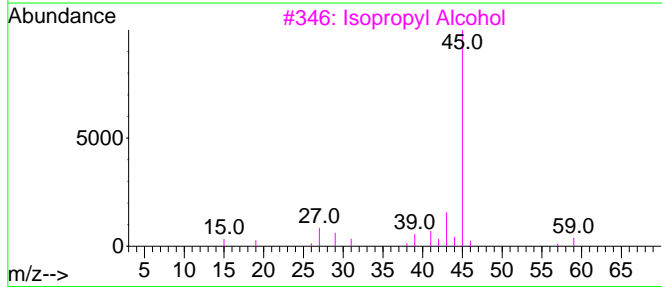
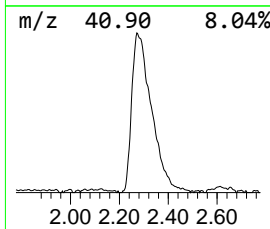
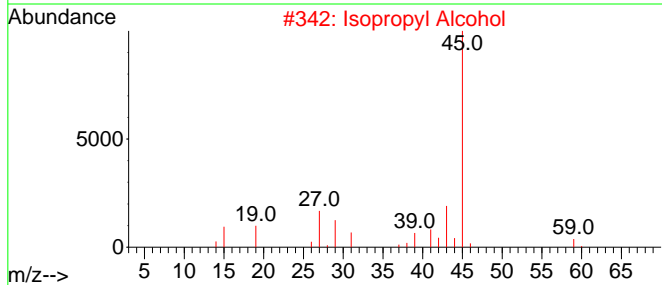
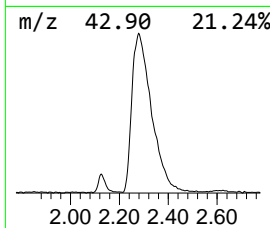
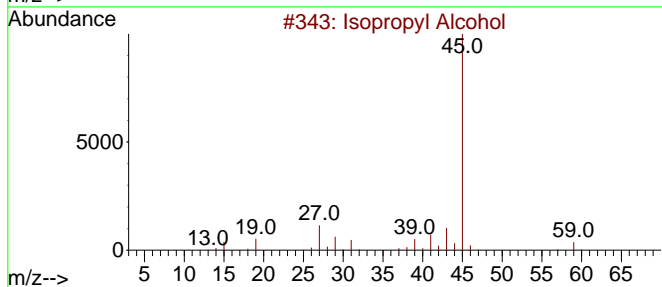
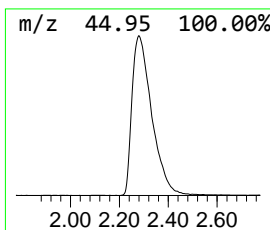
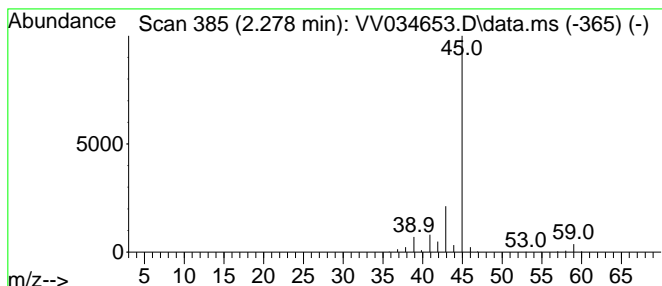
Quant Method : Z:\voasrv\HPCHEM1\MSVOA_V\Method\SFAMVLM022924WMA.M
 Quant Title : VOC Analysis

TIC Library : C:\Database\NIST20.L
 TIC Integration Parameters: LSCINT.P

 Peak Number 1 Isopropyl Alcohol Concentration Rank 1

R.T.	EstConc	Area	Relative to ISTD	R.T.
2.278	68.56 ug/L	1132210	1,4-Difluorobenzene	5.532

Hit#	of	5	Tentative ID	MW	MolForm	CAS#	Qual
1			Isopropyl Alcohol	60	C3H8O	000067-63-0	78
2			Isopropyl Alcohol	60	C3H8O	000067-63-0	78
3			Isopropyl Alcohol	60	C3H8O	000067-63-0	64
4			Isopropyl Alcohol	60	C3H8O	000067-63-0	9
5			Hydrazine, 1,2-dimethyl-	60	C2H8N2	000540-73-8	9



Data Path : Z:\voasrv\HPCHEM1\MSVOA_V\Data\VV031524\
Data File : VV034653.D
Acq On : 15 Mar 2024 15:06
Operator : SY/MD
Sample : P1752-20
Misc : 5.0mL/MSVOA_V/WATER
ALS Vial : 17 Sample Multiplier: 1

Instrument :
MSVOA_V
ClientSampleId :
YCL52

Quant Method : Z:\voasrv\HPCHEM1\MSVOA_V\Method\SFAMVLM022924WMA.M
Quant Title : VOC Analysis

TIC Library : C:\Database\NIST0.L
TIC Integration Parameters: LSCINT.P

TIC Top Hit name	RT	EstConc	Units	Response	--Internal Standard--			
					#	RT	Resp	Conc
Isopropyl Alcohol	2.278	68.6	ug/L	1132210	1	5.532	825743	50.0