

Data Path : Z:\VOASRV\HPCHEM1\MSVOA V\DATA\VV031719\
 Data File : VV009737.D
 Acq On : 16 Mar 2019 18:52
 Operator : SY/MD
 Sample : K1949-01
 Misc : 5.65G/5.0mL/100uL/5.0mL/MSVOA_V/MEOH
 ALS Vial : 13 Sample Multiplier: 1

Instrument :
 MSVOA_V
 ClientSampleId :
 BF0Y6

Integration Parameters: LSCINT.P

Integrator: RTE
 Smoothing : OFF
 Sampling : 1
 Start Thrs: 0.2
 Stop Thrs : 0

Filtering: 5
 Min Area: 0 % of largest Peak
 Max Peaks: 100
 Peak Location: TOP

If leading or trailing edge < 100 prefer < Baseline drop else tangent >
 Peak separation: 5

Method : Z:\VOASRV\HPCHEM1\MSVOA_V\METHOD\SOMVLM031719WMA.M
 Title : VOC Analysis

Signal : TIC

peak #	R.T. min	first scan	max scan	last scan	PK TY	peak height	corr. area	corr. % max.	% of total
1	1.319	64	71	88	rVB	61419	77288	14.63%	1.904%
2	2.097	304	313	326	rBV	146944	209973	39.75%	5.172%
3	2.412	409	411	415	rBV	586	553	0.10%	0.014%
4	2.521	438	445	449	rBV5	1690	2103	0.40%	0.052%
5	2.782	521	526	529	rBV	752	758	0.14%	0.019%
6	3.032	601	604	607	rVB2	512	332	0.06%	0.008%
7	3.048	607	609	612	rBV2	799	591	0.11%	0.015%
8	3.720	815	818	820	rBV2	456	239	0.05%	0.006%
9	3.759	827	830	835	rVB	717	646	0.12%	0.016%
10	3.788	836	839	844	rVB	768	605	0.11%	0.015%
11	3.811	844	846	849	rBV	676	402	0.08%	0.010%
12	3.946	876	888	926	rBV	28391	102225	19.35%	2.518%
13	4.302	996	999	1002	rBV2	754	470	0.09%	0.012%
14	4.399	1011	1029	1055	rBV3	81124	209161	39.60%	5.152%
15	4.679	1109	1116	1120	rBV2	609	950	0.18%	0.023%
16	4.798	1150	1153	1155	rBV	530	291	0.06%	0.007%
17	4.855	1169	1171	1173	rBV	524	320	0.06%	0.008%
18	4.933	1192	1195	1198	rBV	420	314	0.06%	0.008%
19	4.955	1198	1202	1205	rVV2	468	460	0.09%	0.011%
20	5.090	1227	1244	1266	rBV2	220642	528210	100.00%	13.011%
21	5.373	1329	1332	1334	rBV2	873	666	0.13%	0.016%
22	5.611	1399	1406	1407	rBV	786	678	0.13%	0.017%
23	5.663	1409	1422	1439	rBV	152526	318276	60.26%	7.840%
24	5.849	1477	1480	1484	rVB2	649	462	0.09%	0.011%
25	5.875	1484	1488	1492	rBV3	595	678	0.13%	0.017%
26	5.923	1500	1503	1504	rBV	521	281	0.05%	0.007%
27	6.116	1550	1563	1588	rVB2	111657	234320	44.36%	5.772%
28	6.248	1601	1604	1607	rBV4	730	703	0.13%	0.017%
29	6.380	1641	1645	1647	rBV	582	494	0.09%	0.012%
30	6.489	1677	1679	1682	rBV2	383	175	0.03%	0.004%
31	6.579	1704	1707	1712	rBV2	380	382	0.07%	0.009%
32	6.601	1712	1714	1717	rVB	479	223	0.04%	0.005%
33	6.624	1717	1721	1723	rBV2	635	596	0.11%	0.015%
34	6.807	1775	1778	1780	rBV	373	212	0.04%	0.005%

Data Path : Z:\VOASRV\HPCHEM1\MSVOA V\DATA\VV031719\
 Data File : VV009737.D
 Acq On : 16 Mar 2019 18:52
 Operator : SY/MD
 Sample : K1949-01
 Misc : 5.65G/5.0mL/100uL/5.0mL/MSVOA_V/MEOH
 ALS Vial : 13 Sample Multiplier: 1

Instrument :
 MSVOA_V
 ClientSampleId :
 BF0Y6

Integration Parameters: LSCINT.P

Integrator: RTE
 Smoothing : OFF
 Sampling : 1
 Start Thrs: 0.2
 Stop Thrs : 0

Filtering: 5
 Min Area: 0 % of largest Peak
 Max Peaks: 100
 Peak Location: TOP

If leading or trailing edge < 100 prefer < Baseline drop else tangent >
 Peak separation: 5

Method : Z:\VOASRV\HPCHEM1\MSVOA_V\METHOD\SOMVLM031719WMA.M
 Title : VOC Analysis

35	7.029	1835	1847	1865	rBV2	61412	119841	22.69%	2.952%
36	7.164	1887	1889	1894	rBV2	340	206	0.04%	0.005%
37	7.241	1908	1913	1916	rBV	911	708	0.13%	0.017%
38	7.360	1937	1950	1976	rBV	243951	453950	85.94%	11.182%
39	7.569	2007	2015	2019	rBV4	998	1549	0.29%	0.038%
40	7.669	2034	2046	2060	rBV2	41034	80581	15.26%	1.985%
41	7.907	2117	2120	2122	rBV2	742	521	0.10%	0.013%
42	8.019	2146	2155	2166	rBV4	7476	12151	2.30%	0.299%
43	8.103	2179	2181	2182	rBV	422	203	0.04%	0.005%
44	8.148	2182	2195	2215	rVV	116319	238424	45.14%	5.873%
45	8.357	2258	2260	2262	rBV2	487	229	0.04%	0.006%
46	8.431	2281	2283	2288	rBV3	422	324	0.06%	0.008%
47	8.540	2314	2317	2322	rBV3	570	624	0.12%	0.015%
48	8.608	2334	2338	2343	rBV2	549	630	0.12%	0.016%
49	8.691	2362	2364	2366	rBV	606	355	0.07%	0.009%
50	8.817	2400	2403	2405	rBV	329	228	0.04%	0.006%
51	8.900	2416	2429	2444	rBV	235590	419492	79.42%	10.333%
52	9.148	2503	2506	2509	rBV	621	352	0.07%	0.009%
53	9.167	2509	2512	2513	rBV2	291	183	0.03%	0.005%
54	9.611	2647	2650	2651	rBV	655	327	0.06%	0.008%
55	9.633	2656	2657	2660	rBV	391	233	0.04%	0.006%
56	9.746	2686	2692	2696	rBV2	704	891	0.17%	0.022%
57	9.813	2709	2713	2717	rBV	512	440	0.08%	0.011%
58	10.019	2774	2777	2779	rBV3	544	361	0.07%	0.009%
59	10.068	2789	2792	2795	rBV	419	403	0.08%	0.010%
60	10.151	2816	2818	2821	rBV	406	216	0.04%	0.005%
61	10.267	2838	2854	2873	rBV	177228	280016	53.01%	6.898%
62	10.434	2902	2906	2909	rBV	652	607	0.11%	0.015%
63	10.508	2926	2929	2930	rBV2	399	204	0.04%	0.005%
64	10.524	2932	2934	2936	rVV	503	263	0.05%	0.006%
65	10.621	2961	2964	2968	rVB	539	307	0.06%	0.008%
66	10.820	3024	3026	3031	rBV2	572	550	0.10%	0.014%
67	10.871	3037	3042	3045	rBV	399	430	0.08%	0.011%
68	10.936	3060	3062	3064	rBV	417	281	0.05%	0.007%
69	11.154	3127	3130	3136	rVB	657	546	0.10%	0.013%
70	11.228	3151	3153	3160	rVB3	499	473	0.09%	0.012%
71	11.299	3164	3175	3192	rVB	221994	355807	67.36%	8.764%

Data Path : Z:\VOASRV\HPCHEM1\MSVOA V\DATA\VV031719\
 Data File : VV009737.D
 Acq On : 16 Mar 2019 18:52
 Operator : SY/MD
 Sample : K1949-01
 Misc : 5.65G/5.0mL/100uL/5.0mL/MSVOA_V/MEOH
 ALS Vial : 13 Sample Multiplier: 1

Instrument :
 MSVOA_V
 ClientSampleId :
 BF0Y6

Integration Parameters: LSCINT.P

Integrator: RTE
 Smoothing : OFF Filtering: 5
 Sampling : 1 Min Area: 0 % of largest Peak
 Start Thrs: 0.2 Max Peaks: 100
 Stop Thrs : 0 Peak Location: TOP

If leading or trailing edge < 100 prefer < Baseline drop else tangent >
 Peak separation: 5

Method : Z:\VOASRV\HPCHEM1\MSVOA_V\METHOD\SOMVLM031719WMA.M
 Title : VOC Analysis

72	11.466	3225	3227	3230	rBV2	338	231	0.04%	0.006%
73	11.556	3251	3255	3259	rBV2	638	585	0.11%	0.014%
74	11.601	3266	3269	3273	rBV2	515	453	0.09%	0.011%
75	11.675	3280	3292	3309	rBV	234676	380240	71.99%	9.366%
76	11.765	3318	3320	3322	rBV	406	190	0.04%	0.005%
77	11.865	3348	3351	3354	rBV2	666	432	0.08%	0.011%
78	11.900	3358	3362	3364	rBV	319	292	0.06%	0.007%
79	11.981	3382	3387	3389	rBV2	852	685	0.13%	0.017%
80	12.077	3415	3417	3422	rVB2	453	329	0.06%	0.008%
81	12.183	3447	3450	3452	rBV	486	358	0.07%	0.009%
82	12.251	3467	3471	3474	rBV2	499	457	0.09%	0.011%
83	12.270	3474	3477	3478	rBV	454	264	0.05%	0.007%
84	12.392	3512	3515	3516	rBV	439	262	0.05%	0.006%
85	12.836	3649	3653	3657	rVB3	625	675	0.13%	0.017%
86	12.900	3669	3673	3674	rBV	591	412	0.08%	0.010%
87	12.964	3690	3693	3697	rBV	669	521	0.10%	0.013%
88	13.247	3778	3781	3783	rBV	494	359	0.07%	0.009%
89	13.337	3806	3809	3811	rBV	562	362	0.07%	0.009%
90	13.418	3831	3834	3838	rBV2	580	476	0.09%	0.012%
91	13.682	3913	3916	3917	rBV	440	249	0.05%	0.006%
92	13.714	3923	3926	3929	rBV2	360	267	0.05%	0.007%
93	13.762	3938	3941	3947	rBV	614	562	0.11%	0.014%
94	14.215	4077	4082	4085	rBV2	572	711	0.13%	0.018%
95	14.276	4099	4101	4104	rVB	572	254	0.05%	0.006%
96	14.376	4129	4132	4138	rVB2	962	649	0.12%	0.016%
97	14.505	4169	4172	4179	rBV2	789	871	0.16%	0.021%
98	14.627	4207	4210	4213	rBV	1003	765	0.14%	0.019%
99	14.714	4233	4237	4239	rBV2	618	536	0.10%	0.013%
100	14.878	4286	4288	4289	rBV	541	267	0.05%	0.007%

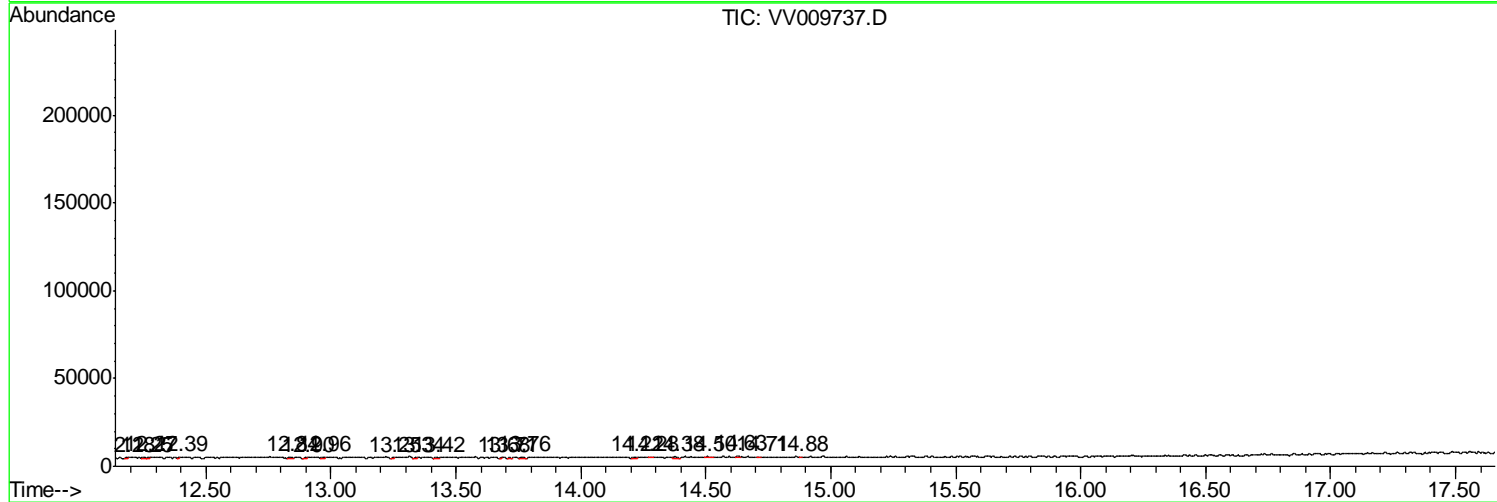
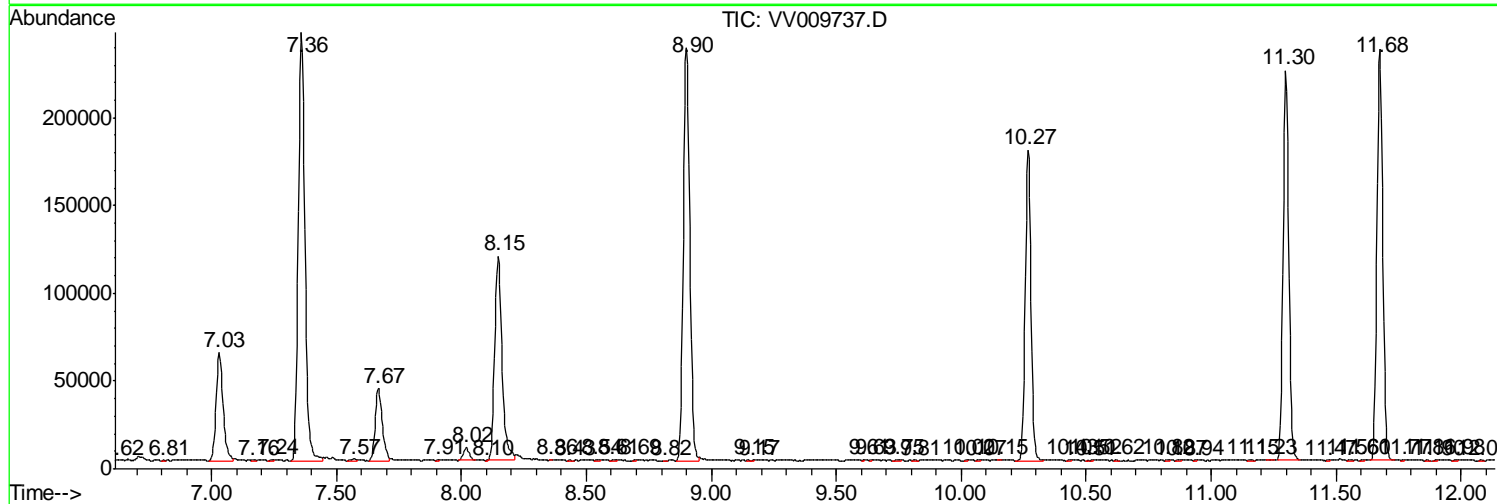
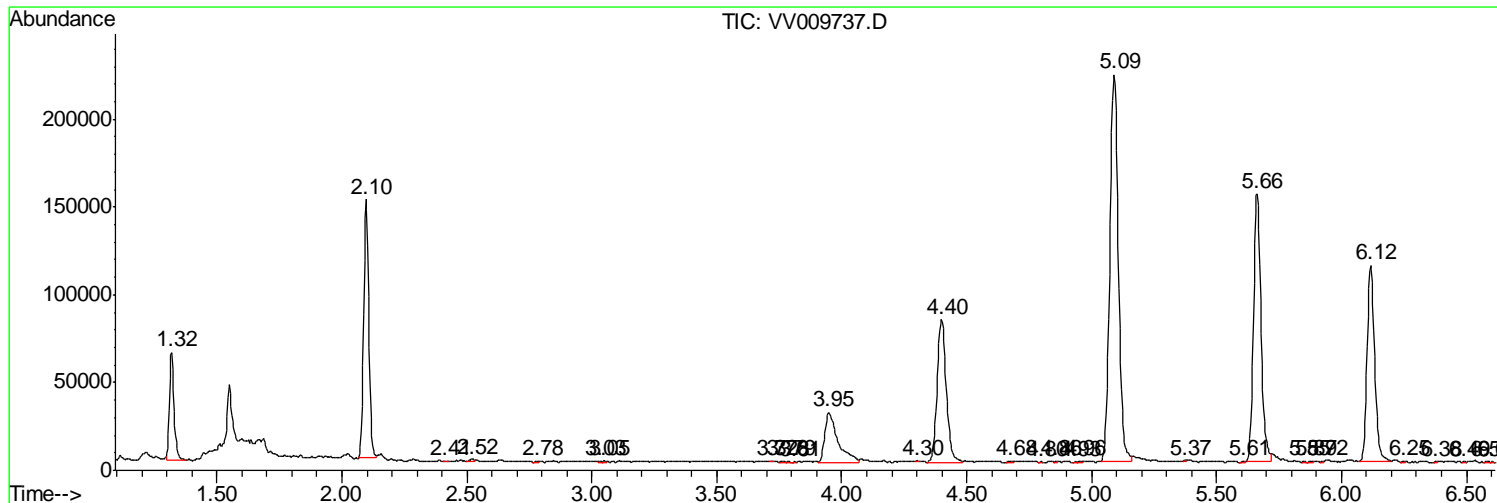
Sum of corrected areas: 4059657

Data Path : Z:\VOASRV\HPCHEM1\MSVOA V\DATA\VV031719\
 Data File : VV009737.D
 Acq On : 16 Mar 2019 18:52
 Operator : SY/MD
 Sample : K1949-01
 Misc : 5.65G/5.0mL/100uL/5.0mL/MSVOA_V/MEOH
 ALS Vial : 13 Sample Multiplier: 1

Instrument :
 MSVOA_V
ClientSampled :
 BF0Y6

Quant Method : Z:\VOASRV\HPCHEM1\MSVOA_V\METHOD\SOMVLM031719WMA.M
 Quant Title : VOC Analysis

TIC Library : C:\DATABASE\NIST11.L
 TIC Integration Parameters: LSCINT.P



Data Path : Z:\VOASRV\HPCHEM1\MSVOA_V\DATA\VV031719\
Data File : VV009737.D
Acq On : 16 Mar 2019 18:52
Operator : SY/MD
Sample : K1949-01
Misc : 5.65G/5.0mL/100uL/5.0mL/MSVOA_V/MEOH
ALS Vial : 13 Sample Multiplier: 1

Instrument :
MSVOA_V
ClientSampleId :
BF0Y6

Quant Method : Z:\VOASRV\HPCHEM1\MSVOA_V\METHOD\SOMVLM031719WMA.M
Quant Title : VOC Analysis

TIC Library : C:\DATABASE\NIST11.L
TIC Integration Parameters: LSCINT.P

No Library Search Compounds Detected

Data Path : Z:\VOASRV\HPCHEM1\MSVOA_V\DATA\VV031719\
Data File : VV009737.D
Acq On : 16 Mar 2019 18:52
Operator : SY/MD
Sample : K1949-01
Misc : 5.65G/5.0mL/100uL/5.0mL/MSVOA_V/MEOH
ALS Vial : 13 Sample Multiplier: 1

Instrument :
MSVOA_V
ClientSampleId :
BF0Y6

Quant Method : Z:\VOASRV\HPCHEM1\MSVOA_V\METHOD\SOMVLM031719WMA.M
Quant Title : VOC Analysis

TIC Library : C:\DATABASE\NIST11.L
TIC Integration Parameters: LSCINT.P

TIC Top Hit name	RT	EstConc	Units	Response	--Internal Standard--			
					#	RT	Resp	Conc
