

Data File : VV015008.D
 Acq On : 18 Mar 2020 05:36
 Operator : SY/MD
 Sample : L1940-03
 Misc : 5.0mL/MSVOA_V/WATER
 ALS Vial : 47 Sample Multiplier: 1

Instrument :
 MSVOA_V
 ClientSampleId :
 C0D90

Quant Time: Mar 18 07:48:43 2020
 Quant Method : Z:\VOASRV\HPCHEM1\MSVOA_V\METHOD\SOMVLM031620WMA.M
 Quant Title : VOC Analysis
 QLast Update : Wed Mar 18 07:43:00 2020
 Response via : Initial Calibration

Internal Standards	R.T.	QIon	Response	Conc	Units	Dev(Min)
1) 1,4-Difluorobenzene	5.64	114	314187	50.00	ug/L	0.00
28) Chlorobenzene-d5	8.87	117	306477	50.00	ug/L	0.00
60) 1,4-Dichlorobenzene-d4	11.27	152	146005	50.00	ug/L	0.00

System Monitoring Compounds

4) Vinyl Chloride-d3	1.32	65	80180	38.31	ug/L	0.00
Spiked Amount	50.000	Range	60 - 135	Recovery	=	76.62%
7) Chloroethane-d5	1.58	69	64830	41.70	ug/L	0.00
Spiked Amount	50.000	Range	70 - 130	Recovery	=	83.40%
11) 1,1-Dichloroethene-d2	2.12	63	100504	31.30	ug/L	0.00
Spiked Amount	50.000	Range	60 - 125	Recovery	=	62.60%
21) 2-Butanone-d5	3.93	46	96806	75.85	ug/L	0.00
Spiked Amount	100.000	Range	40 - 130	Recovery	=	75.85%
24) Chloroform-d	4.38	84	187818	43.07	ug/L	0.00
Spiked Amount	50.000	Range	70 - 125	Recovery	=	86.14%
26) 1,2-Dichloroethane-d4	5.06	65	125010	45.24	ug/L	0.00
Spiked Amount	50.000	Range	70 - 125	Recovery	=	90.48%
32) Benzene-d6	5.08	84	381981	45.24	ug/L	0.00
Spiked Amount	50.000	Range	70 - 125	Recovery	=	90.48%
36) 1,2-Dichloropropane-d6	6.10	67	114795	45.66	ug/L	0.00
Spiked Amount	50.000	Range	70 - 120	Recovery	=	91.32%
41) Toluene-d8	7.34	98	371156	44.45	ug/L	0.00
Spiked Amount	50.000	Range	80 - 120	Recovery	=	88.90%
43) trans-1,3-Dichloropropene-	7.64	79	48653	36.40	ug/L	0.00
Spiked Amount	50.000	Range	60 - 125	Recovery	=	72.80%
47) 2-Hexanone-d5	8.12	63	99643	87.80	ug/L	0.00
Spiked Amount	100.000	Range	45 - 130	Recovery	=	87.80%
57) 1,1,2,2-Tetrachloroethane-	10.24	84	164313	44.64	ug/L	0.00
Spiked Amount	50.000	Range	65 - 120	Recovery	=	89.28%
64) 1,2-Dichlorobenzene-d4	11.65	152	153245	47.91	ug/L	0.00
Spiked Amount	50.000	Range	80 - 120	Recovery	=	95.82%

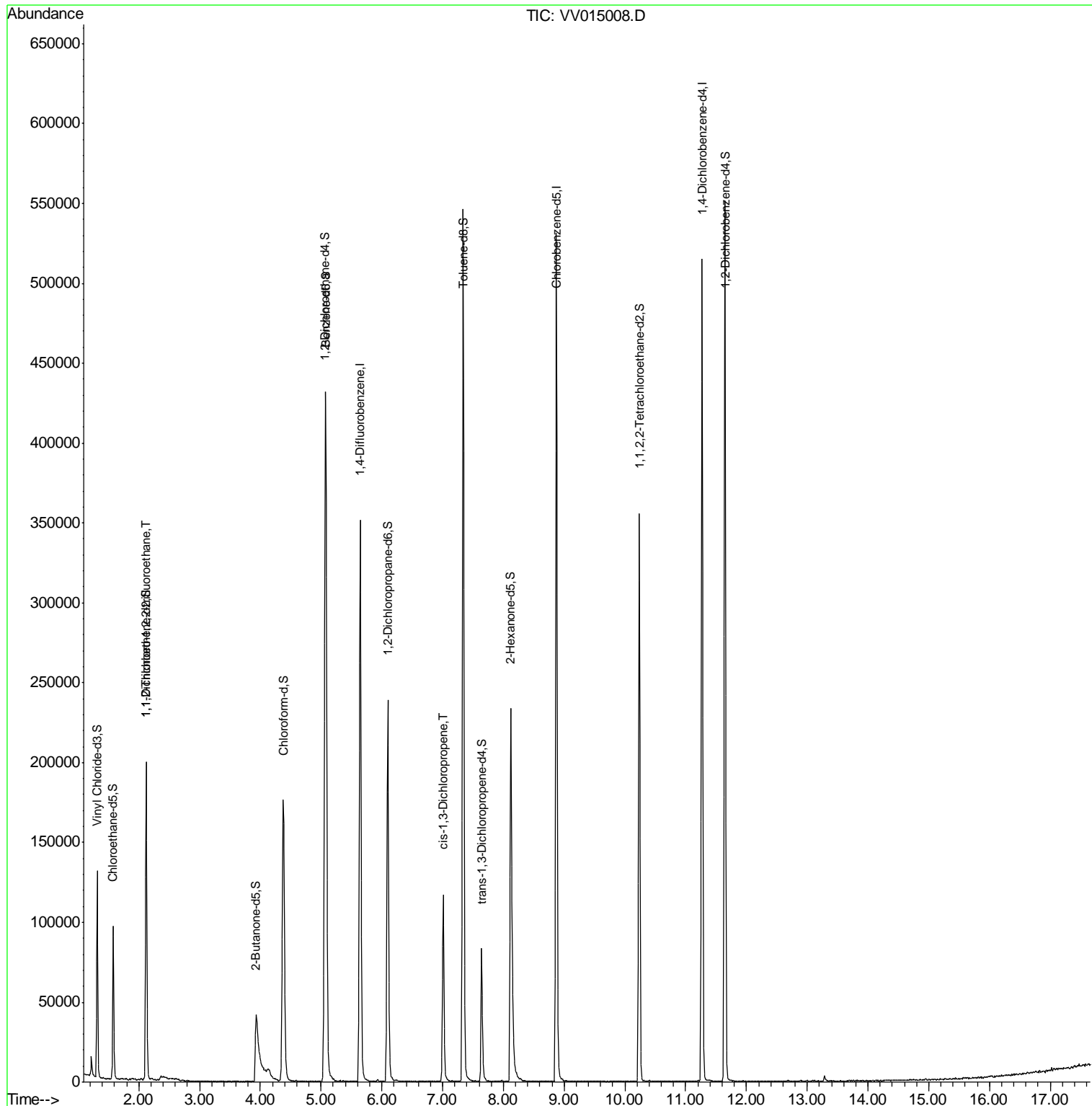
Target Compounds					Qvalue
10) 1,1,2-Trichloro-1,2,2-trif	2.13	101	1093	0.675 ug/L #	15
39) cis-1,3-Dichloropropene	7.01	75	3455	1.006 ug/L	85

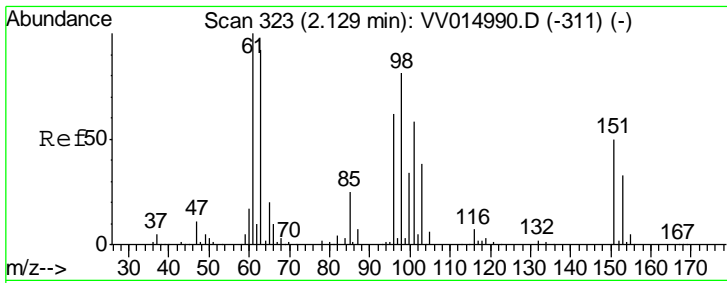
(#) = qualifier out of range (m) = manual integration (+) = signals summed

Data File : VV015008.D
Acq On : 18 Mar 2020 05:36
Operator : SY/MD
Sample : L1940-03
Misc : 5.0mL/MSVOA_V/WATER
ALS Vial : 47 Sample Multiplier: 1

Instrument :
MSVOA_V
Client Sampled :
C0D90

Quant Time: Mar 18 07:48:43 2020
Quant Method : Z:\VOASRV\HPCHEM1\MSVOA_V\METHOD\SOMVLM031620WMA.M
Quant Title : VOC Analysis
QLast Update : Wed Mar 18 07:43:00 2020
Response via : Initial Calibration





#10

1,1,2-Trichloro-1,2,2-trifluoroethane

Concen: 0.675 ug/L

RT: 2.13 min Scan# 322

Delta R.T. -0.00 min

Lab File: VV015008.D

Acq: 18 Mar 2020 05:36

Instrument :
MSVOA_V
ClientSampled :
C0D90

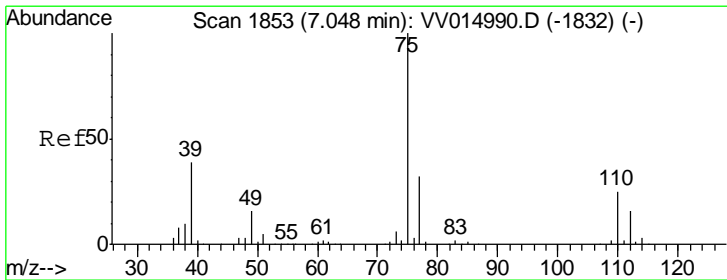
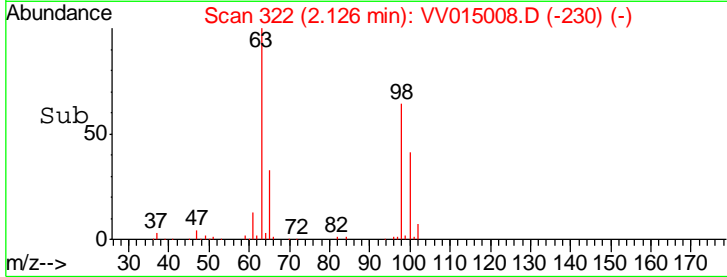
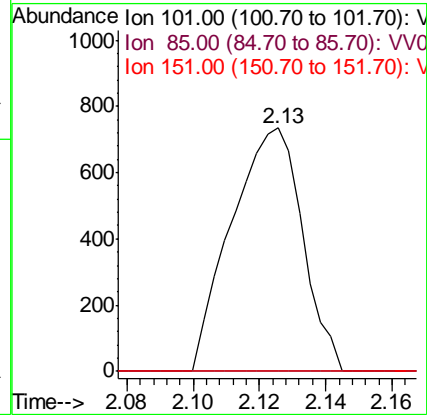
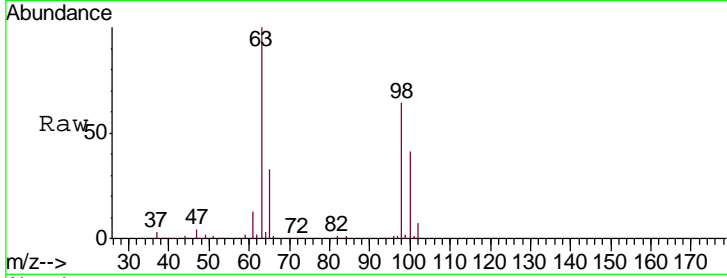
Tgt Ion: 101 Resp: 1093

Ion Ratio Lower Upper

101 100

85 0.0 33.9 50.9#

151 0.0 70.1 105.1#



#39

cis-1,3-Dichloropropene

Concen: 1.006 ug/L

RT: 7.01 min Scan# 1841

Delta R.T. -0.04 min

Lab File: VV015008.D

Acq: 18 Mar 2020 05:36

Tgt Ion: 75 Resp: 3455

Ion Ratio Lower Upper

75 100

77 39.7 21.8 40.6

