

Data Path : Z:\voasrv\HPCHEM1\MSVOA\_V\Data\VW031723\  
 Data File : VW030236.D  
 Acq On : 17 Mar 2023 15:25  
 Operator : SY/MD  
 Sample : 01996-04  
 Misc : 25.0mL/MSVOA\_V/WATER  
 ALS Vial : 10 Sample Multiplier: 1

**Instrument :**  
 MSVOA\_V  
**ClientSampleId :**  
 H0A25

Quant Time: Mar 18 00:35:39 2023  
 Quant Method : Z:\voasrv\HPCHEM1\MSVOA\_V\Method\SFAMVTR022323WMA.M  
 Quant Title : TRACE VOA SFAM1.0  
 QLast Update : Fri Mar 17 22:49:08 2023  
 Response via : Initial Calibration

**Manual Integrations**  
**APPROVED**  
 Reviewed By :Krupa Patel 03/22/2023  
 Supervised By :Mahesh Dadoda 03/22/2023

Compound	R.T.	QIon	Response	Conc	Units	Dev(Min)
<b>Internal Standards</b>						
1) 1,4-Difluorobenzene	5.545	114	128145	5.000	ug/L	0.00
28) Chlorobenzene-d5	8.792	117	115704	5.000	ug/L	0.00
58) 1,4-Dichlorobenzene-d4	11.194	152	58714	5.000	ug/L	0.00
<b>System Monitoring Compounds</b>						
4) Vinyl Chloride-d3	1.282	65	33719	4.067	ug/L	0.00
Spiked Amount	5.000	Range 40 - 130	Recovery	=	81.400%	
7) Chloroethane-d5	1.539	69	32009	4.113	ug/L	0.00
Spiked Amount	5.000	Range 65 - 130	Recovery	=	82.200%	
11) 1,1-Dichloroethene-d2	2.076	63	692296	40.612	ug/L	0.00
Spiked Amount	5.000	Range 60 - 125	Recovery	=	812.200%#	
20) 2-Butanone-d5	3.809	46	80662	52.764	ug/L	0.00
Spiked Amount	50.000	Range 40 - 130	Recovery	=	105.520%	
24) Chloroform-d	4.262	84	76025	4.489	ug/L	0.00
Spiked Amount	5.000	Range 70 - 125	Recovery	=	89.800%	
26) 1,2-Dichloroethane-d4	4.953	65	37252	5.388	ug/L	0.00
Spiked Amount	5.000	Range 70 - 130	Recovery	=	107.800%	
32) Benzene-d6	4.973	84	133040	4.273	ug/L	0.00
Spiked Amount	5.000	Range 70 - 125	Recovery	=	85.400%	
36) 1,2-Dichloropropane-d6	5.998	67	41260	4.405	ug/L	0.00
Spiked Amount	5.000	Range 60 - 140	Recovery	=	88.200%	
41) Toluene-d8	7.252	98	113425	3.843	ug/L	0.00
Spiked Amount	5.000	Range 70 - 130	Recovery	=	76.800%	
43) trans-1,3-Dichloroprop...	7.564	79	14610	4.559	ug/L	0.00
Spiked Amount	5.000	Range 55 - 130	Recovery	=	91.200%	
46) 2-Hexanone-d5	8.034	63	65566	49.457	ug/L	0.00
Spiked Amount	50.000	Range 45 - 130	Recovery	=	98.920%	
56) 1,1,2,2-Tetrachloroeth...	10.162	84	28447	4.269	ug/L	0.00
Spiked Amount	5.000	Range 65 - 120	Recovery	=	85.400%	
66) 1,2-Dichlorobenzene-d4	11.570	152	44193	4.449	ug/L	0.00
Spiked Amount	5.000	Range 80 - 120	Recovery	=	89.000%	
<b>Target Compounds</b>						
12) 1,1-Dichloroethene	2.076	96	1099984	127.908	ug/L #	71
19) 1,1-Dichloroethane	3.121	63	20586	1.351	ug/L	99
22) cis-1,2-Dichloroethene	3.825	96	34571	3.823	ug/L	83
25) Chloroform	4.288	83	66612	4.202	ug/L	96
29) 1,1,1-Trichloroethane	4.523	97	153525	11.295	ug/L	96
31) Carbon tetrachloride	4.748	117	57816	4.733	ug/L	99
33) Benzene	5.024	78	16159	0.511	ug/L	100
34) Trichloroethene	5.841	95	3837050	433.348	ug/L	93
45) 1,1,2-Trichloroethane	7.783	97	2813m	0.489	ug/L	
47) Tetrachloroethene	7.944	164	24152872	3177.856	ug/L	85
64) 1,3-Dichlorobenzene	11.130	146	6714	0.382	ug/L	93
65) 1,4-Dichlorobenzene	11.220	146	6031	0.340	ug/L	91
67) 1,2-Dichlorobenzene	11.590	146	8360	0.538	ug/L	97

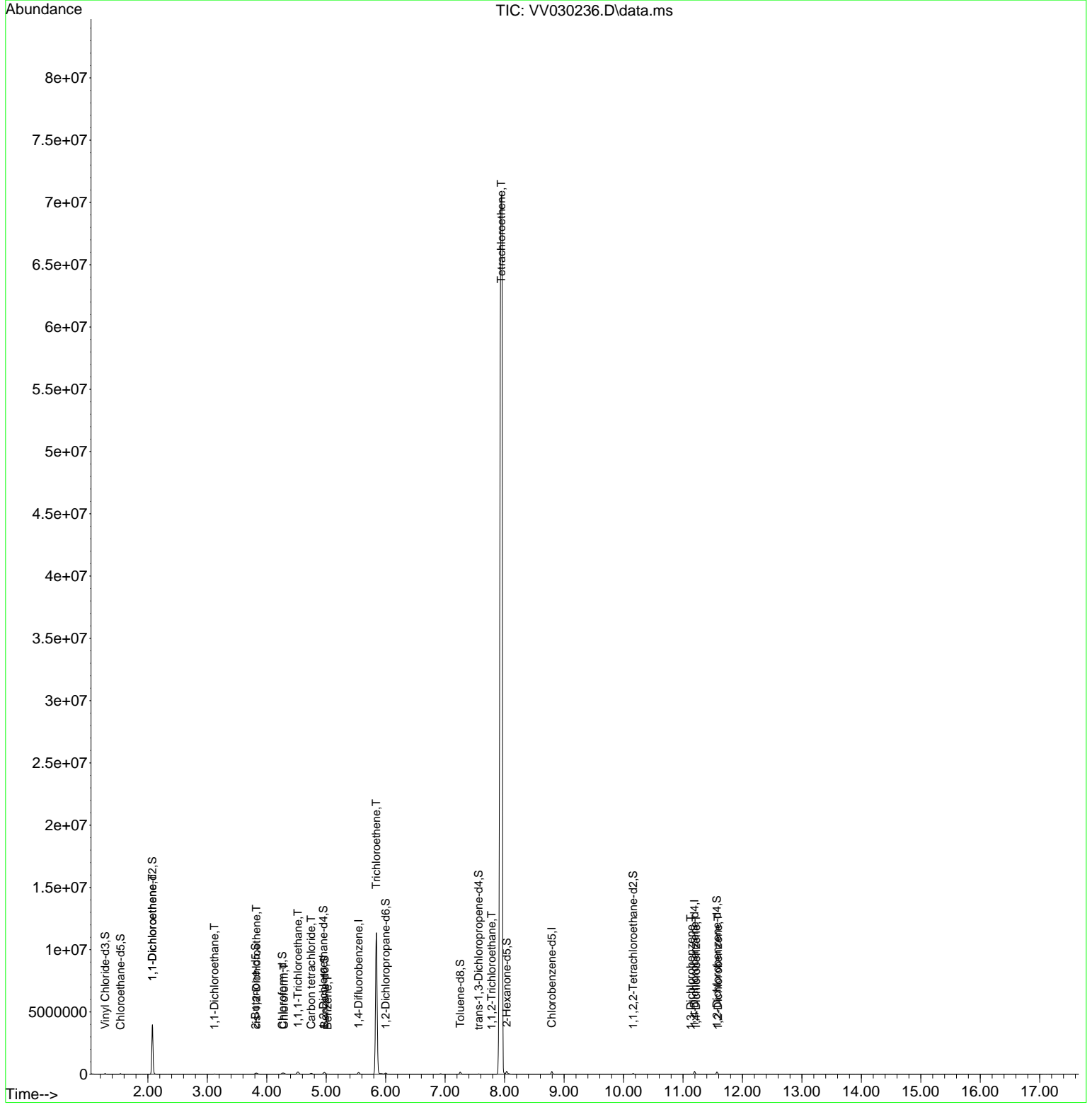
(#) = qualifier out of range (m) = manual integration (+) = signals summed

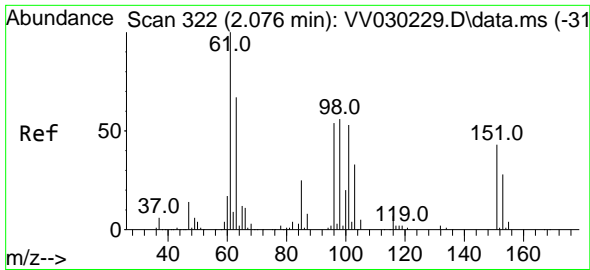
Data Path : Z:\voasrv\HPCHEM1\MSVOA\_V\Data\VV031723\  
 Data File : VV030236.D  
 Acq On : 17 Mar 2023 15:25  
 Operator : SY/MD  
 Sample : 01996-04  
 Misc : 25.0mL/MSVOA\_V/WATER  
 ALS Vial : 10 Sample Multiplier: 1

**Instrument :**  
 MSVOA\_V  
**ClientSampleId :**  
 H0A25

Quant Time: Mar 18 00:35:39 2023  
 Quant Method : Z:\voasrv\HPCHEM1\MSVOA\_V\Method\SFAMVTR022323WMA.M  
 Quant Title : TRACE VOA SFAM1.0  
 QLast Update : Fri Mar 17 22:49:08 2023  
 Response via : Initial Calibration

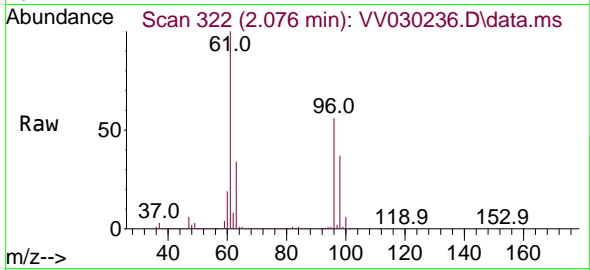
**Manual Integrations**  
**APPROVED**  
 Reviewed By :Krupa Patel 03/22/2023  
 Supervised By :Mahesh Dadoda 03/22/2023





#12  
 1,1-Dichloroethene  
 Concen: 127.908 ug/L  
 RT: 2.076 min Scan# 31  
 Delta R.T. -0.000 min  
 Lab File: VV030236.D  
 Acq: 17 Mar 2023 15:25

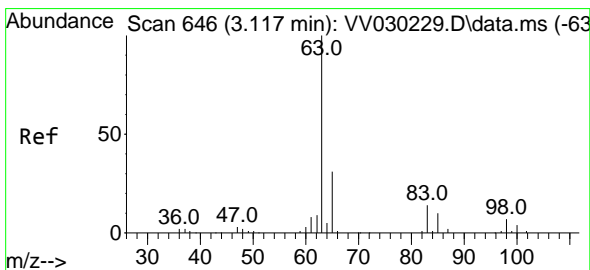
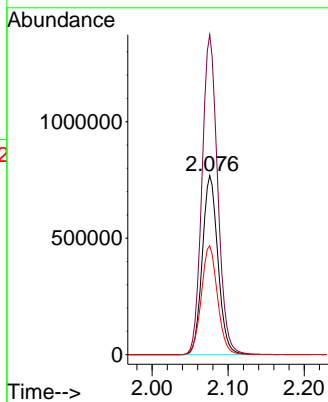
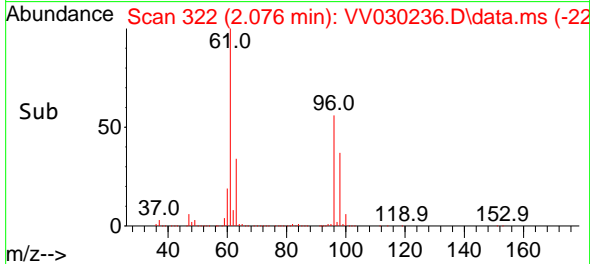
Instrument :  
 MSVOA\_V  
 ClientSampleId :  
 H0A25



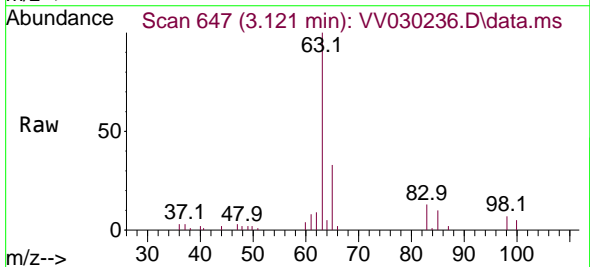
Tgt Ion: 96 Resp: 1099984  
 Ion Ratio Lower Upper  
 96 100  
 61 178.7 115.6 214.6  
 63 60.9 85.6 159.0

Manual Integrations  
 APPROVED

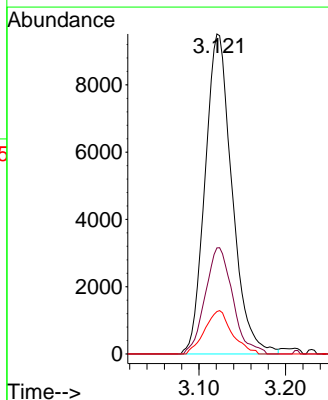
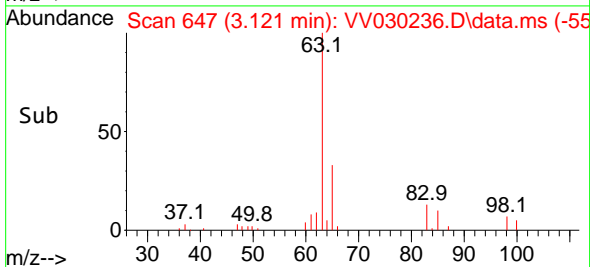
Reviewed By :Krupa Patel 03/22/2023  
 Supervised By :Mahesh Dadoda 03/22/2023

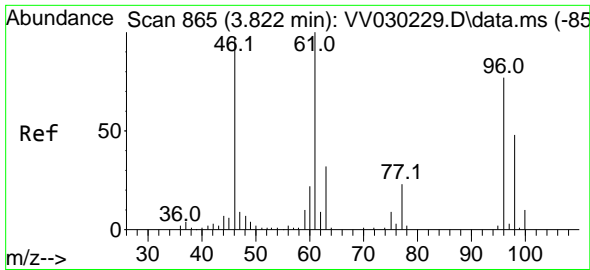


#19  
 1,1-Dichloroethane  
 Concen: 1.351 ug/L  
 RT: 3.121 min Scan# 647  
 Delta R.T. 0.003 min  
 Lab File: VV030236.D  
 Acq: 17 Mar 2023 15:25



Tgt Ion: 63 Resp: 20586  
 Ion Ratio Lower Upper  
 63 100  
 65 33.1 23.0 42.8  
 83 13.3 9.6 17.8





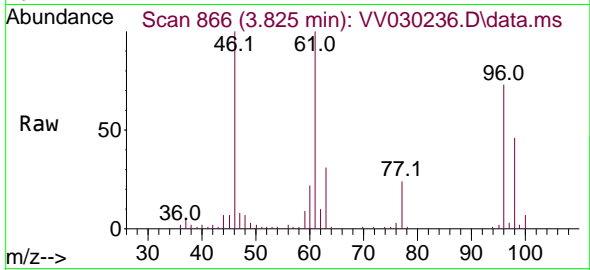
#22  
 cis-1,2-Dichloroethene  
 Concen: 3.823 ug/L  
 RT: 3.825 min Scan# 80  
 Delta R.T. 0.003 min  
 Lab File: VV030236.D  
 Acq: 17 Mar 2023 15:25

Instrument :

MSVOA\_V

ClientSampleId :

H0A25



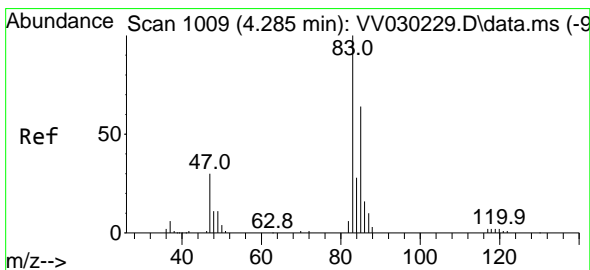
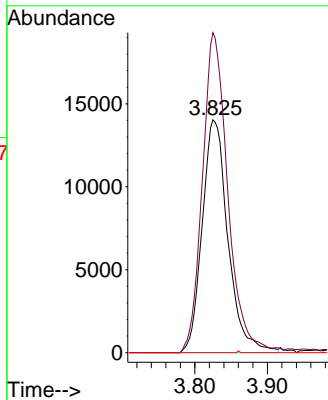
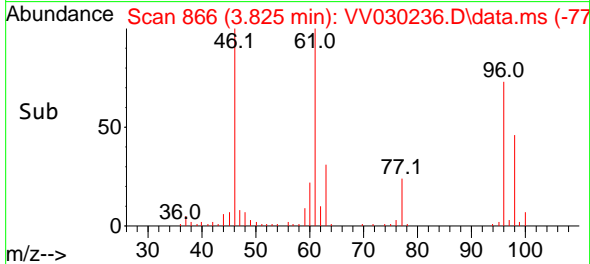
Tgt Ion: 96 Resp: 3457  
 Ion Ratio Lower Upper  
 96 100  
 61 137.4 83.4 154.8  
 68 0.0 0.0 0.0

Manual Integrations

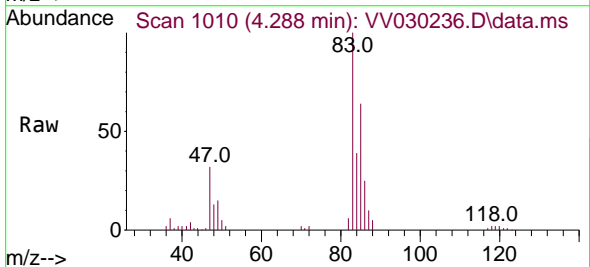
APPROVED

Reviewed By :Krupa Patel 03/22/2023

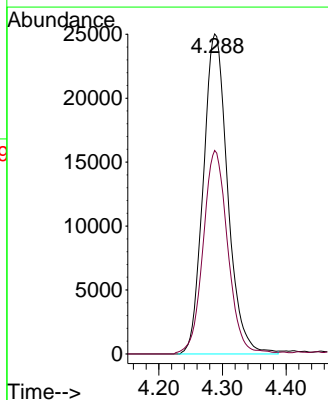
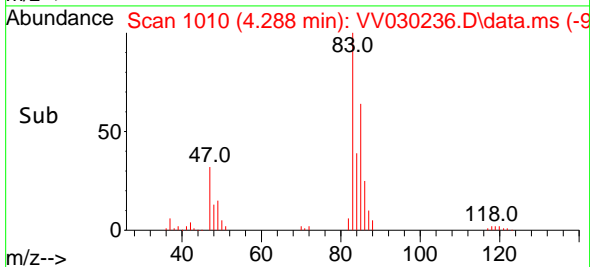
Supervised By :Mahesh Dadoda 03/22/2023

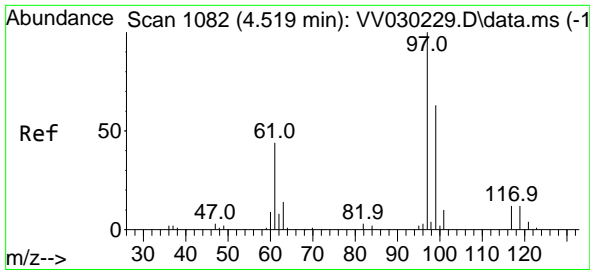


#25  
 Chloroform  
 Concen: 4.202 ug/L  
 RT: 4.288 min Scan# 1010  
 Delta R.T. 0.003 min  
 Lab File: VV030236.D  
 Acq: 17 Mar 2023 15:25



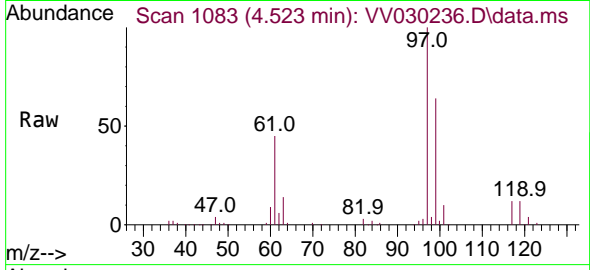
Tgt Ion: 83 Resp: 66612  
 Ion Ratio Lower Upper  
 83 100  
 85 63.6 46.5 86.5





#29  
 1,1,1-Trichloroethane  
 Concen: 11.295 ug/L  
 RT: 4.523 min Scan# 1082  
 Delta R.T. 0.003 min  
 Lab File: VV030236.D  
 Acq: 17 Mar 2023 15:25

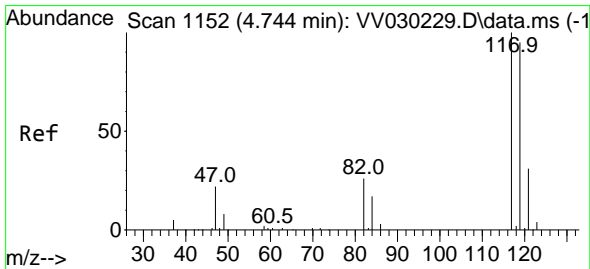
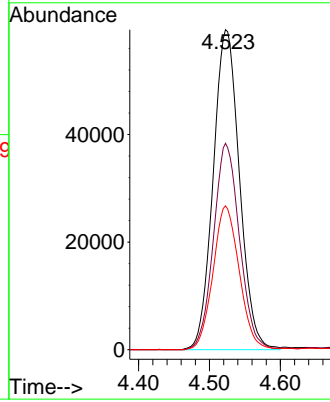
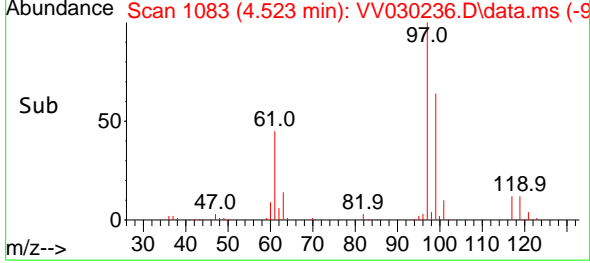
Instrument : MSVOA\_V  
 ClientSampleId : H0A25



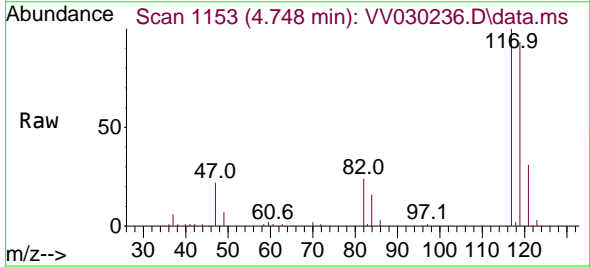
Tgt Ion: 97 Resp: 15352  
 Ion Ratio Lower Upper  
 97 100  
 99 63.8 51.3 76.9  
 61 44.9 31.5 47.3

Manual Integrations  
 APPROVED

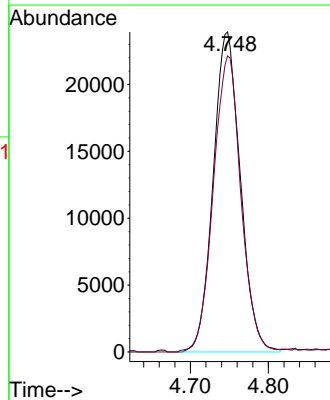
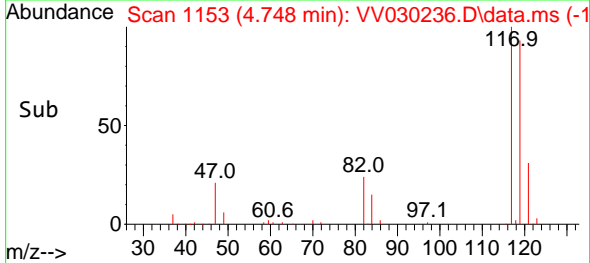
Reviewed By :Krupa Patel 03/22/2023  
 Supervised By :Mahesh Dadoda 03/22/2023

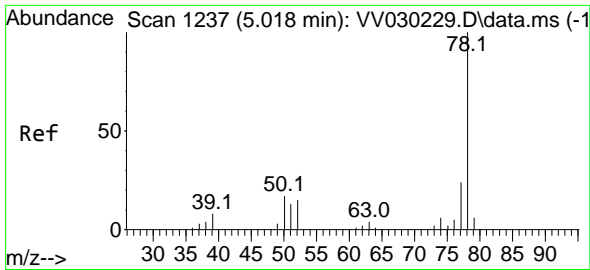


#31  
 Carbon tetrachloride  
 Concen: 4.733 ug/L  
 RT: 4.748 min Scan# 1153  
 Delta R.T. 0.003 min  
 Lab File: VV030236.D  
 Acq: 17 Mar 2023 15:25



Tgt Ion:117 Resp: 57816  
 Ion Ratio Lower Upper  
 117 100  
 119 94.2 76.1 114.1





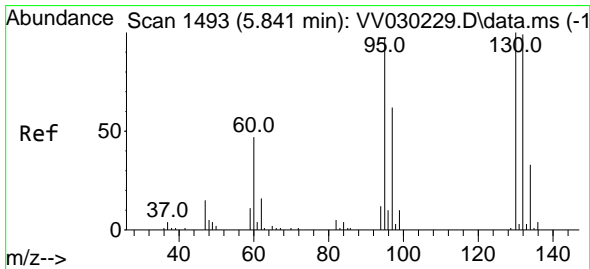
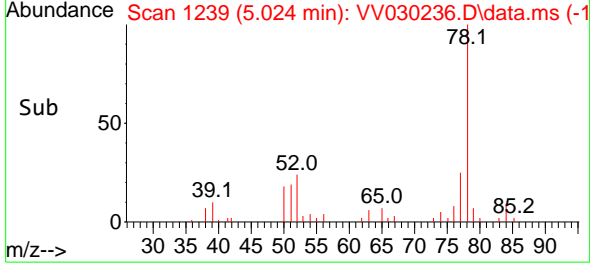
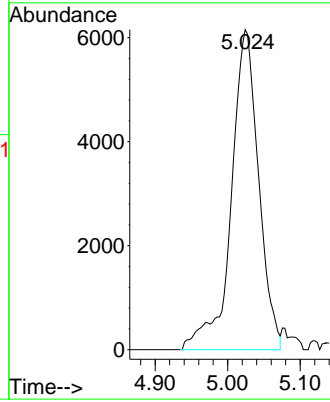
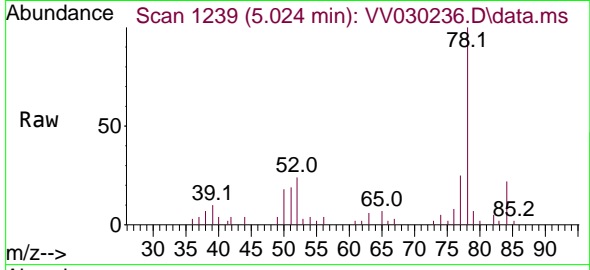
#33  
Benzene  
Concen: 0.511 ug/L  
RT: 5.024 min Scan# 11  
Delta R.T. 0.006 min  
Lab File: VV030236.D  
Acq: 17 Mar 2023 15:25

Instrument : MSVOA\_V  
ClientSampleId : H0A25

Tgt Ion: 78 Resp: 1615

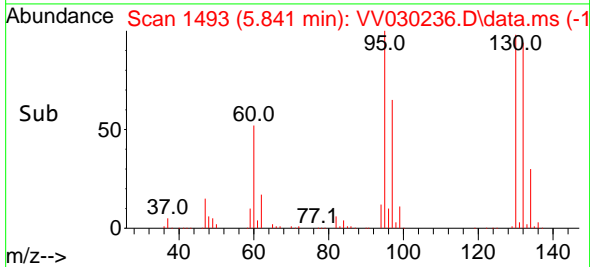
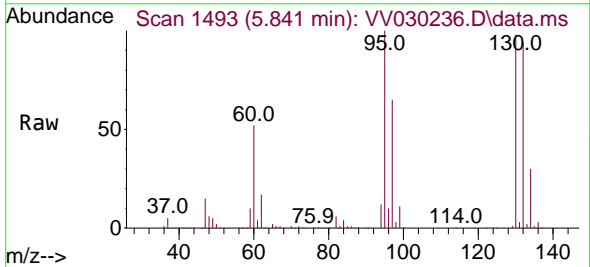
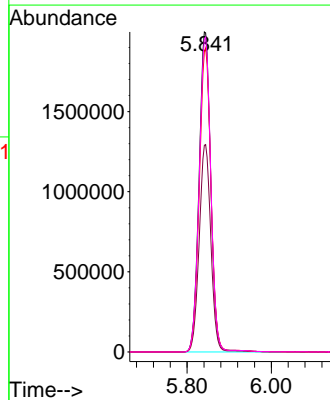
Manual Integrations  
APPROVED

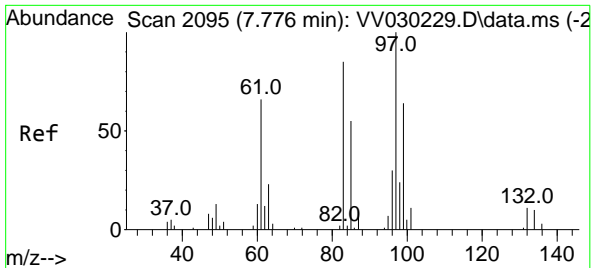
Reviewed By :Krupa Patel 03/22/2023  
Supervised By :Mahesh Dadoda 03/22/2023



#34  
Trichloroethene  
Concen: 433.348 ug/L  
RT: 5.841 min Scan# 1493  
Delta R.T. -0.000 min  
Lab File: VV030236.D  
Acq: 17 Mar 2023 15:25

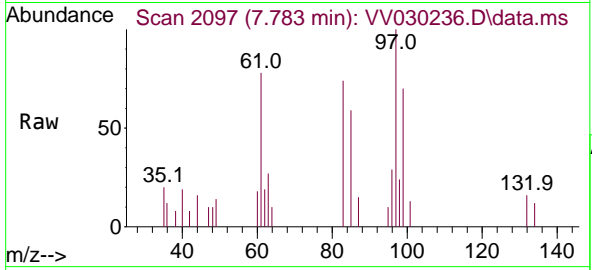
Tgt Ion: 95 Resp: 3837050  
Ion Ratio Lower Upper  
95 100  
97 64.6 46.5 86.5  
132 93.8 71.7 133.3  
130 97.7 74.0 137.4





#45  
 1,1,2-Trichloroethane  
 Concen: 0.489 ug/L m  
 RT: 7.783 min Scan# 2097  
 Delta R.T. 0.006 min  
 Lab File: VV030236.D  
 Acq: 17 Mar 2023 15:25

Instrument : MSVOA\_V  
 ClientSampled : H0A25

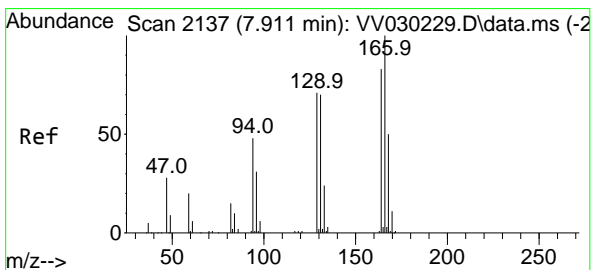
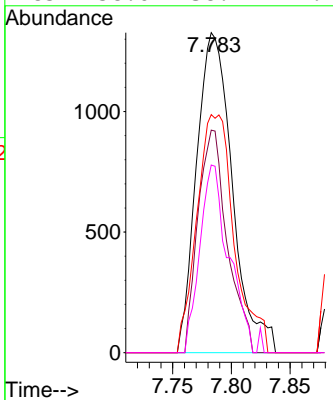
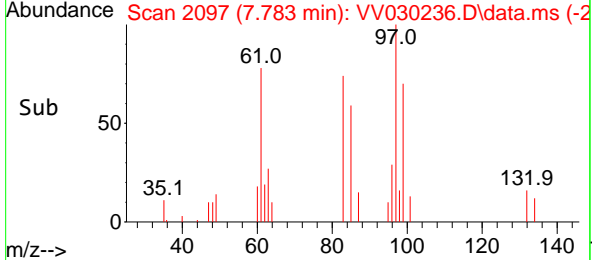


Tgt Ion: 97 Resp: 281

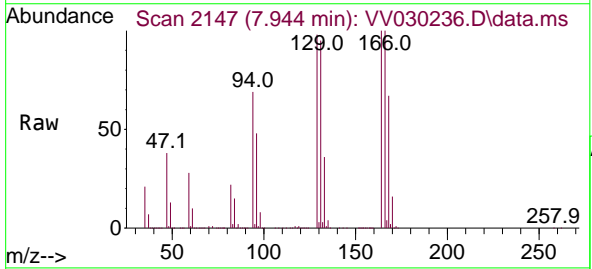
Ion	Ratio	Lower	Upper
97	100		
99	69.6	42.6	79.2
83	74.4	57.7	107.3
85	58.6	38.9	72.2

Manual Integrations  
**APPROVED**

Reviewed By :Krupa Patel 03/22/2023  
 Supervised By :Mahesh Dadoda 03/22/2023

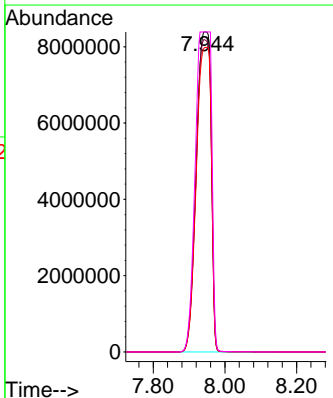
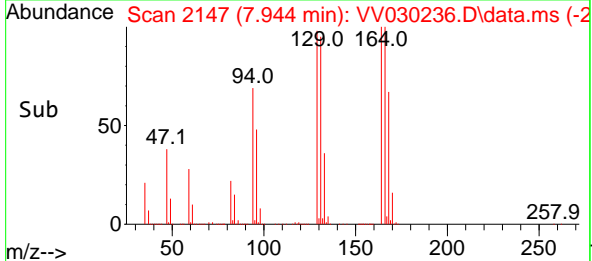


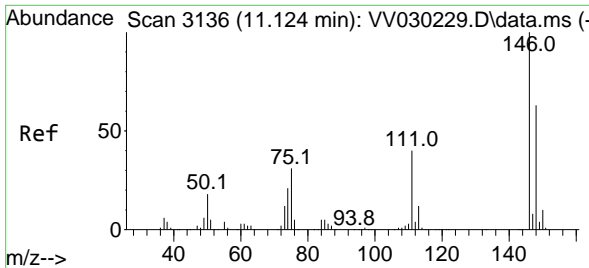
#47  
 Tetrachloroethene  
 Concen: 3177.856 ug/L  
 RT: 7.944 min Scan# 2147  
 Delta R.T. 0.032 min  
 Lab File: VV030236.D  
 Acq: 17 Mar 2023 15:25



Tgt Ion:164 Resp:24152872

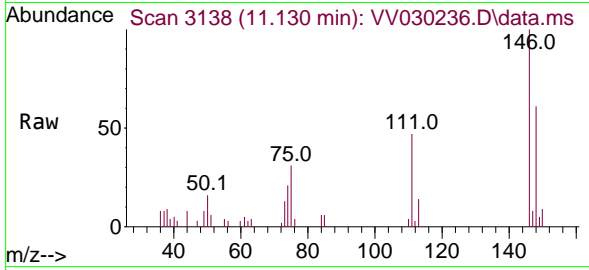
Ion	Ratio	Lower	Upper
164	100		
129	97.6	63.6	118.2
131	95.2	61.7	114.7
166	100.0	90.8	168.6





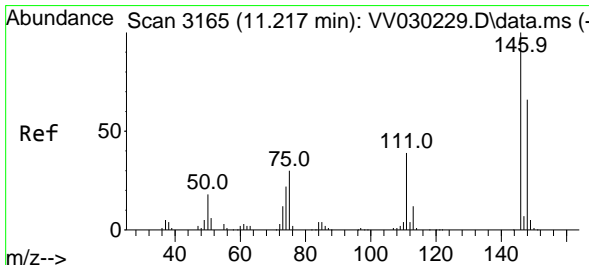
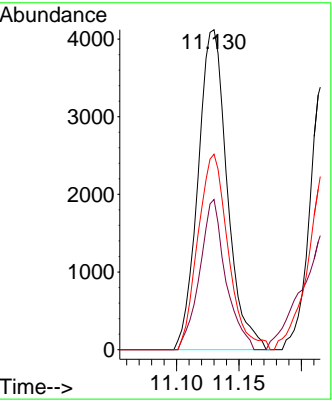
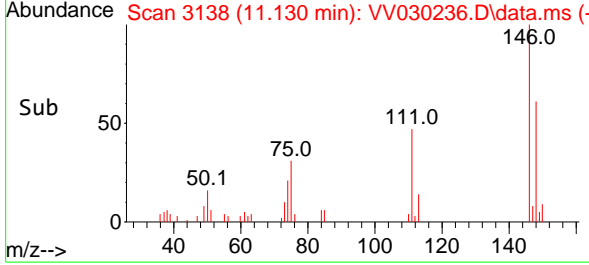
#64  
 1,3-Dichlorobenzene  
 Concen: 0.382 ug/L  
 RT: 11.130 min Scan# 3136  
 Delta R.T. 0.006 min  
 Lab File: VV030236.D  
 Acq: 17 Mar 2023 15:25

Instrument : MSVOA\_V  
 ClientSampleId : H0A25

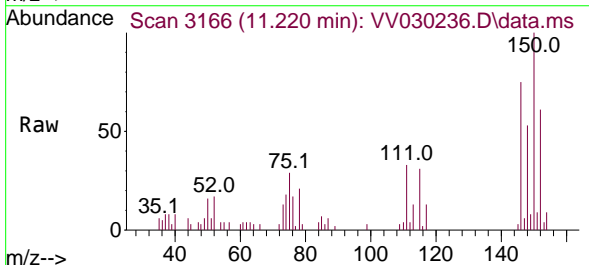


Tgt Ion:146 Resp: 6714  
 Ion Ratio Lower Upper  
 146 100  
 111 46.9 27.7 51.5  
 148 61.1 44.5 82.7

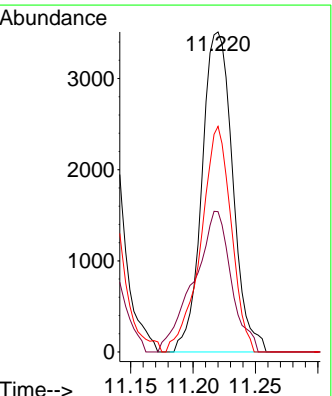
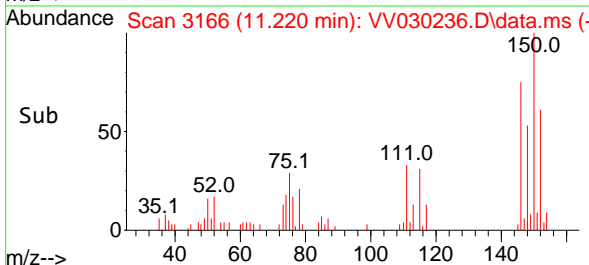
Manual Integrations  
**APPROVED**  
 Reviewed By :Krupa Patel 03/22/2023  
 Supervised By :Mahesh Dadoda 03/22/2023



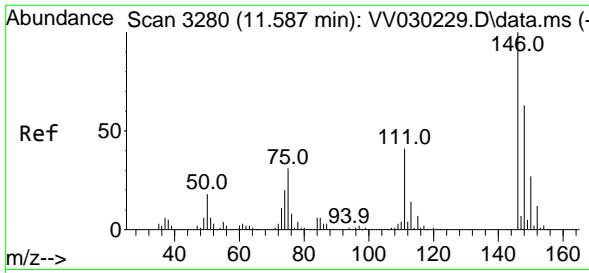
#65  
 1,4-Dichlorobenzene  
 Concen: 0.340 ug/L  
 RT: 11.220 min Scan# 3166  
 Delta R.T. 0.003 min  
 Lab File: VV030236.D  
 Acq: 17 Mar 2023 15:25



Tgt Ion:146 Resp: 6031  
 Ion Ratio Lower Upper  
 146 100  
 111 43.8 27.4 51.0  
 148 70.5 44.1 81.9

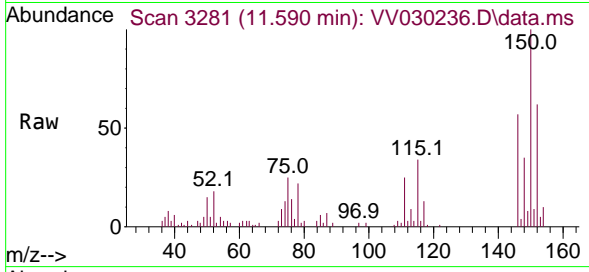






#67  
 1,2-Dichlorobenzene  
 Concen: 0.538 ug/L  
 RT: 11.590 min Scan# 31  
 Delta R.T. 0.003 min  
 Lab File: VV030236.D  
 Acq: 17 Mar 2023 15:25

Instrument :  
 MSVOA\_V  
 ClientSampleId :  
 H0A25



Tgt Ion:146 Resp: 8360

Ion	Ratio	Lower	Upper
146	100		
111	42.9	33.5	50.3
148	61.4	51.3	76.9

Manual Integrations  
 APPROVED

Reviewed By :Krupa Patel 03/22/2023  
 Supervised By :Mahesh Dadoda 03/22/2023

