

Data Path : Z:\VOASRV\HPCHEM1\MSVOA V\DATA\VV031820\
 Data File : VV015022.D
 Acq On : 18 Mar 2020 18:40
 Operator : SY/MD
 Sample : VV0318WBL01
 Misc : 5.0mL/MSVOA V/WATER
 ALS Vial : 13 Sample Multiplier: 1

Instrument :
 MSVOA_V
 ClientSampled :
 VBLK88

Integration Parameters: LSCINT.P

Integrator: RTE
 Smoothing : OFF
 Sampling : 1
 Start Thrs: 0.2
 Stop Thrs : 0

Filtering: 5
 Min Area: 0 % of largest Peak
 Max Peaks: 100
 Peak Location: TOP

If leading or trailing edge < 100 prefer < Baseline drop else tangent >
 Peak separation: 5

Method : Z:\VOASRV\HPCHEM1\MSVOA_V\METHOD\SOMVLM031820WMA.M
 Title : VOC Analysis

Signal : TIC

peak #	R.T. min	first scan	max scan	last scan	PK TY	peak height	corr. area	corr. % max.	% of total
1	1.315	63	70	85	rVB	110227	117586	11.14%	1.333%
2	1.579	145	152	170	rVB	83919	103997	9.85%	1.179%
3	2.122	311	321	345	rVB	183815	265336	25.13%	3.008%
4	2.524	442	446	447	rBV	688	550	0.05%	0.006%
5	2.669	489	491	493	rBV	204	111	0.01%	0.001%
6	2.929	569	572	576	rBV	279	280	0.03%	0.003%
7	3.000	591	594	595	rBV	322	175	0.02%	0.002%
8	3.238	666	668	671	rBV2	331	209	0.02%	0.002%
9	3.466	735	739	741	rBV	166	123	0.01%	0.001%
10	3.505	748	751	756	rVB	347	284	0.03%	0.003%
11	3.714	815	816	817	rBV	120	24	0.00%	0.000%
12	3.753	820	828	830	rBV2	205	293	0.03%	0.003%
13	3.785	836	838	840	rVB2	226	91	0.01%	0.001%
14	3.852	855	859	862	rBV2	176	141	0.01%	0.002%
15	3.936	873	885	917	rBV2	43957	181606	17.20%	2.059%
16	4.273	987	990	992	rBV2	640	378	0.04%	0.004%
17	4.380	1007	1023	1051	rVB	168162	417546	39.54%	4.734%
18	4.579	1083	1085	1087	rBV2	463	229	0.02%	0.003%
19	4.695	1117	1121	1123	rBV	342	345	0.03%	0.004%
20	4.720	1123	1129	1131	rVV2	402	461	0.04%	0.005%
21	4.801	1151	1154	1160	rVB	316	242	0.02%	0.003%
22	4.839	1161	1166	1168	rBV3	327	283	0.03%	0.003%
23	4.852	1168	1170	1171	rBV	175	50	0.00%	0.001%
24	5.074	1222	1239	1267	rBV2	414988	1055976	100.00%	11.972%
25	5.290	1299	1306	1313	rVB4	655	926	0.09%	0.010%
26	5.322	1313	1316	1317	rBV4	308	180	0.02%	0.002%
27	5.418	1344	1346	1347	rBV	233	72	0.01%	0.001%
28	5.479	1363	1365	1370	rBV2	323	275	0.03%	0.003%
29	5.547	1384	1386	1390	rBV2	268	227	0.02%	0.003%
30	5.643	1402	1416	1437	rBV	413704	813878	77.07%	9.227%
31	5.852	1479	1481	1483	rBV	418	219	0.02%	0.002%
32	5.936	1487	1507	1518	rBV9	2195	5544	0.53%	0.063%
33	6.016	1531	1532	1534	rBV	128	35	0.00%	0.000%
34	6.032	1534	1537	1543	rBV2	292	284	0.03%	0.003%

Data Path : Z:\VOASRV\HPCHEM1\MSVOA V\DATA\VV031820\
 Data File : VV015022.D
 Acq On : 18 Mar 2020 18:40
 Operator : SY/MD
 Sample : VV0318WBL01
 Misc : 5.0mL/MSVOA V/WATER
 ALS Vial : 13 Sample Multiplier: 1

Instrument :
 MSVOA_V
 ClientSampleId :
 VBLK88

Integration Parameters: LSCINT.P

Integrator: RTE
 Smoothing : OFF
 Sampling : 1
 Start Thrs: 0.2
 Stop Thrs : 0

Filtering: 5
 Min Area: 0 % of largest Peak
 Max Peaks: 100
 Peak Location: TOP

If leading or trailing edge < 100 prefer < Baseline drop else tangent >
 Peak separation: 5

Method : Z:\VOASRV\HPCHEM1\MSVOA_V\METHOD\SOMVLM031820WMA.M
 Title : VOC Analysis

35	6.097	1543	1557	1587	rBV	229192	469531	44.46%	5.323%
36	6.219	1592	1595	1599	rBV2	821	772	0.07%	0.009%
37	6.328	1627	1629	1630	rBV2	148	43	0.00%	0.000%
38	6.383	1643	1646	1648	rBV	278	170	0.02%	0.002%
39	6.675	1734	1737	1740	rBV	243	137	0.01%	0.002%
40	6.707	1745	1747	1752	rVB	301	180	0.02%	0.002%
41	6.733	1752	1755	1757	rBV	357	179	0.02%	0.002%
42	6.814	1777	1780	1781	rBV	208	97	0.01%	0.001%
43	6.830	1783	1785	1787	rVB	281	90	0.01%	0.001%
44	7.010	1829	1841	1856	rBV	133589	239170	22.65%	2.711%
45	7.164	1886	1889	1892	rBB2	396	198	0.02%	0.002%
46	7.283	1921	1926	1928	rBV	415	371	0.04%	0.004%
47	7.338	1931	1943	1973	rVV	536418	928029	87.88%	10.521%
48	7.643	2027	2038	2063	rBV	93904	163173	15.45%	1.850%
49	7.765	2074	2076	2081	rVB	492	308	0.03%	0.003%
50	7.826	2093	2095	2097	rBV2	287	144	0.01%	0.002%
51	7.997	2142	2148	2155	rVB4	1445	1666	0.16%	0.019%
52	8.064	2161	2169	2174	rBV2	285	461	0.04%	0.005%
53	8.119	2174	2186	2216	rBV	246459	543858	51.50%	6.166%
54	8.322	2247	2249	2252	rBV3	536	275	0.03%	0.003%
55	8.373	2262	2265	2267	rBV2	427	300	0.03%	0.003%
56	8.412	2275	2277	2281	rVB	462	258	0.02%	0.003%
57	8.505	2303	2306	2307	rBV2	258	151	0.01%	0.002%
58	8.685	2359	2362	2365	rVB	364	223	0.02%	0.003%
59	8.775	2384	2390	2392	rBV2	411	427	0.04%	0.005%
60	8.871	2407	2420	2444	rBV	622796	1009540	95.60%	11.445%
61	9.084	2484	2486	2488	rBV	350	125	0.01%	0.001%
62	9.158	2503	2509	2513	rBV3	1120	1463	0.14%	0.017%
63	9.199	2519	2522	2525	rBV	372	227	0.02%	0.003%
64	9.572	2629	2638	2640	rBV6	1237	1498	0.14%	0.017%
65	9.694	2674	2676	2677	rBV	176	54	0.01%	0.001%
66	9.804	2706	2710	2714	rBV2	325	334	0.03%	0.004%
67	9.948	2750	2755	2763	rBV3	1110	1650	0.16%	0.019%
68	10.164	2819	2822	2824	rVB	181	96	0.01%	0.001%
69	10.238	2833	2845	2861	rBV	355363	555473	52.60%	6.297%
70	10.556	2940	2944	2945	rBV	1122	730	0.07%	0.008%
71	10.942	3055	3064	3073	rBV3	1591	2279	0.22%	0.026%

Data Path : Z:\VOASRV\HPCHEM1\MSVOA V\DATA\VV031820\
 Data File : VV015022.D
 Acq On : 18 Mar 2020 18:40
 Operator : SY/MD
 Sample : VV0318WBL01
 Misc : 5.0mL/MSVOA V/WATER
 ALS Vial : 13 Sample Multiplier: 1

Instrument :
 MSVOA_V
 ClientSampleId :
 VBLK88

Integration Parameters: LSCINT.P

Integrator: RTE
 Smoothing : OFF Filtering: 5
 Sampling : 1 Min Area: 0 % of largest Peak
 Start Thrs: 0.2 Max Peaks: 100
 Stop Thrs : 0 Peak Location: TOP

If leading or trailing edge < 100 prefer < Baseline drop else tangent >
 Peak separation: 5

Method : Z:\VOASRV\HPCHEM1\MSVOA_V\METHOD\SOMVLM031820WMA.M
 Title : VOC Analysis

72	11.202	3139	3145	3154	rBV5	2814	4110	0.39%	0.047%
73	11.270	3154	3166	3188	rBV	635496	1003286	95.01%	11.374%
74	11.440	3216	3219	3221	rBV	400	209	0.02%	0.002%
75	11.453	3221	3223	3226	rBV	358	208	0.02%	0.002%
76	11.479	3229	3231	3236	rVB	369	214	0.02%	0.002%
77	11.505	3237	3239	3242	rBV2	335	166	0.02%	0.002%
78	11.646	3270	3283	3305	rBV	564440	897194	84.96%	10.172%
79	11.897	3358	3361	3363	rVB	344	169	0.02%	0.002%
80	11.919	3363	3368	3370	rBV2	220	229	0.02%	0.003%
81	12.045	3405	3407	3409	rBV	278	120	0.01%	0.001%
82	12.206	3454	3457	3459	rBV2	441	234	0.02%	0.003%
83	12.669	3594	3601	3612	rVB2	5100	7044	0.67%	0.080%
84	13.283	3785	3792	3804	rBV5	7116	11067	1.05%	0.125%
85	13.768	3937	3943	3949	rBV5	3656	4766	0.45%	0.054%

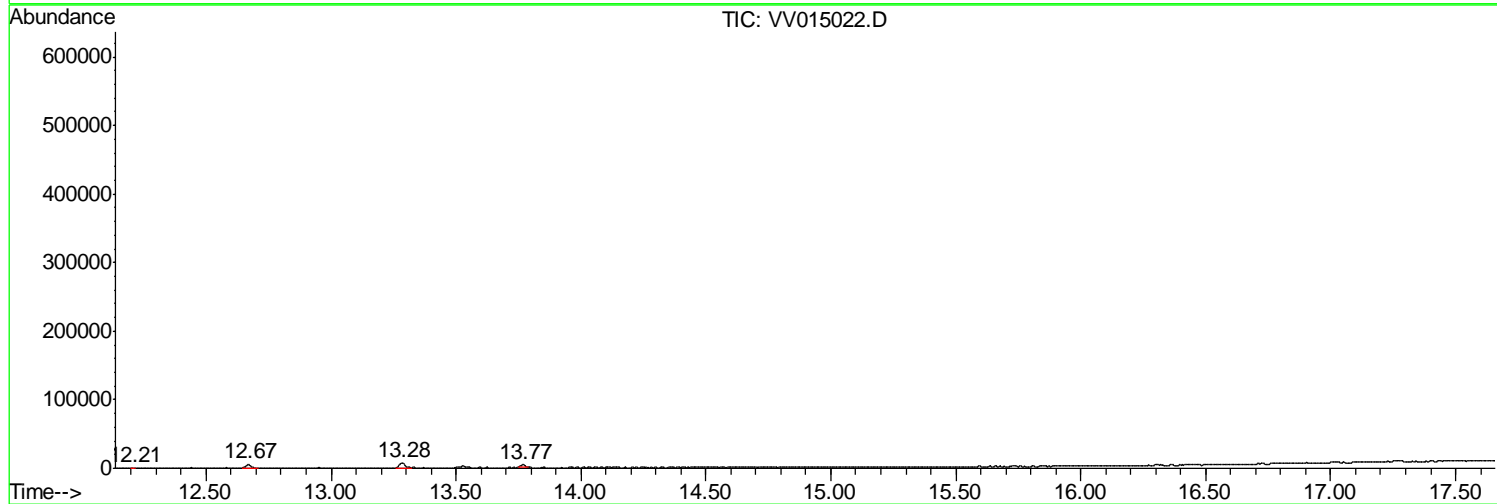
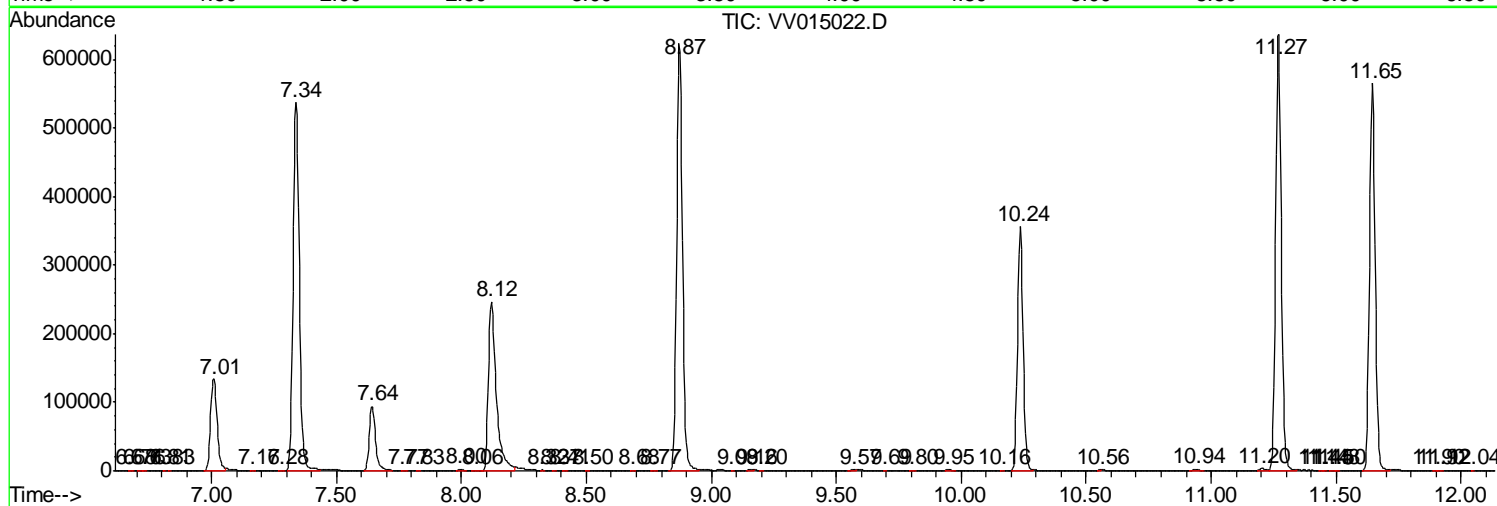
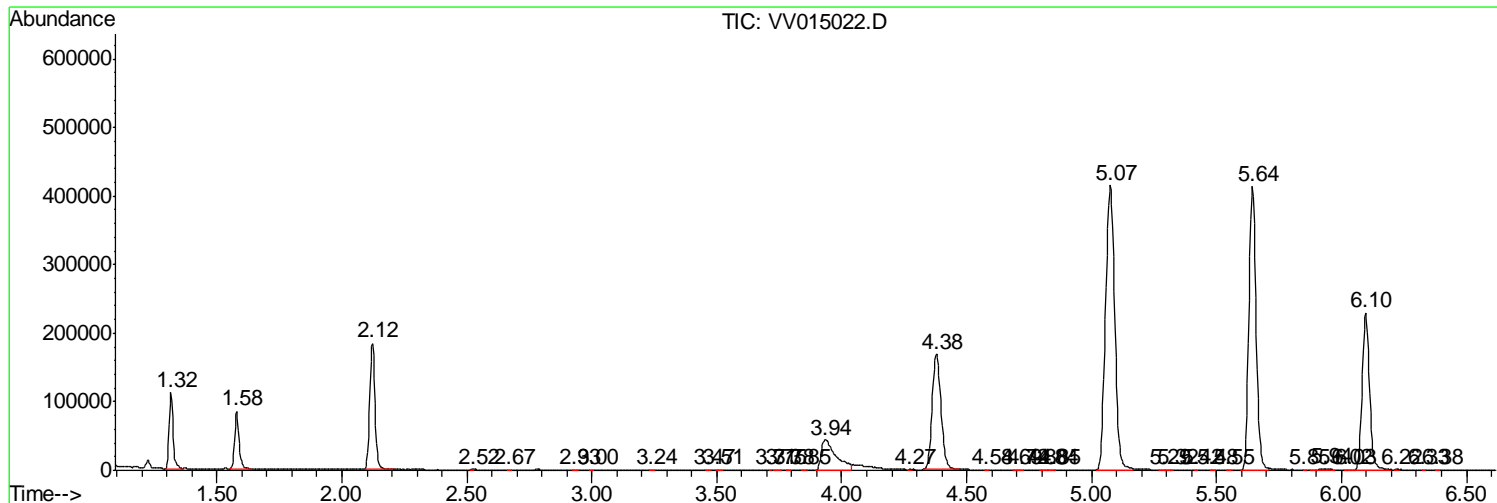
Sum of corrected areas: 8820652

Data Path : Z:\VOASRV\HPCHEM1\MSVOA V\DATA\VV031820\
 Data File : VV015022.D
 Acq On : 18 Mar 2020 18:40
 Operator : SY/MD
 Sample : VV0318WBL01
 Misc : 5.0mL/MSVOA V/WATER
 ALS Vial : 13 Sample Multiplier: 1

Instrument :
 MSVOA_V
 ClientSampled :
 VBLK88

Quant Method : Z:\VOASRV\HPCHEM1\MSVOA_V\METHOD\SOMVLM031820WMA.M
 Quant Title : VOC Analysis

TIC Library : C:\DATABASE\NIST11.L
 TIC Integration Parameters: LSCINT.P



Data Path : Z:\VOASRV\HPCHEM1\MSVOA_V\DATA\VV031820\
Data File : VV015022.D
Acq On : 18 Mar 2020 18:40
Operator : SY/MD
Sample : VV0318WBL01
Misc : 5.0mL/MSVOA_V/WATER
ALS Vial : 13 Sample Multiplier: 1

Instrument :
MSVOA_V
ClientSampleId :
VBLK88

Quant Method : Z:\VOASRV\HPCHEM1\MSVOA_V\METHOD\SOMVLM031820WMA.M
Quant Title : VOC Analysis

TIC Library : C:\DATABASE\NIST11.L
TIC Integration Parameters: LSCINT.P

No Library Search Compounds Detected

Data Path : Z:\VOASRV\HPCHEM1\MSVOA_V\DATA\VV031820\
Data File : VV015022.D
Acq On : 18 Mar 2020 18:40
Operator : SY/MD
Sample : VV0318WBL01
Misc : 5.0mL/MSVOA_V/WATER
ALS Vial : 13 Sample Multiplier: 1

Instrument :
MSVOA_V
ClientSampleId :
VBLK88

Quant Method : Z:\VOASRV\HPCHEM1\MSVOA_V\METHOD\SOMVLM031820WMA.M
Quant Title : VOC Analysis

TIC Library : C:\DATABASE\NIST11.L
TIC Integration Parameters: LSCINT.P

TIC Top Hit name	RT	EstConc	Units	Response	--Internal Standard--			
					#	RT	Resp	Conc
