

Data Path : Z:\voasrv\HPCHEM1\MSVOA_V\Data\VV031924\
 Data File : VV034712.D
 Acq On : 18 Mar 2024 21:55
 Operator : SY/MD
 Sample : P1766-15
 Misc : 5.0mL/MSVOA_V/WATER
 ALS Vial : 20 Sample Multiplier: 1

Instrument :
 MSVOA_V
 ClientSampleId :
 COGN5

Integration Parameters: LSCINT.P

Integrator: RTE
 Smoothing : OFF
 Sampling : 1
 Start Thrs : 0.2
 Stop Thrs : 0

Filtering: 5
 Min Area: 0 % of largest Peak
 Max Peaks: 100
 Peak Location: TOP

If leading or trailing edge < 100 prefer < Baseline drop else tangent >
 Peak separation: 5

Method : Z:\voasrv\HPCHEM1\MSVOA_V\Method\SFAMVLM022924WMA.M
 Title : VOC Analysis

Signal : TIC: VV034712.D\data.ms

| peak # | R.T. min | first scan | max scan | last scan | PK TY | peak height | corr. area | corr. % max. | % of total |
|--------|----------|------------|----------|-----------|-------|-------------|------------|--------------|------------|
| 1 | 1.278 | 68 | 74 | 88 | rVB | 242096 | 251615 | 16.43% | 2.085% |
| 2 | 1.532 | 146 | 153 | 165 | rVB | 202723 | 233571 | 15.25% | 1.935% |
| 3 | 2.060 | 307 | 317 | 331 | rBV2 | 417040 | 628043 | 41.02% | 5.204% |
| 4 | 2.487 | 448 | 450 | 452 | rBV2 | 280 | 115 | 0.01% | 0.001% |
| 5 | 2.561 | 462 | 473 | 478 | rBV5 | 2422 | 3987 | 0.26% | 0.033% |
| 6 | 2.725 | 521 | 524 | 526 | rBV2 | 172 | 90 | 0.01% | 0.001% |
| 7 | 2.741 | 526 | 529 | 532 | rBV2 | 202 | 159 | 0.01% | 0.001% |
| 8 | 2.818 | 550 | 553 | 555 | rBV | 292 | 195 | 0.01% | 0.002% |
| 9 | 2.979 | 601 | 603 | 607 | rBB | 249 | 154 | 0.01% | 0.001% |
| 10 | 3.011 | 610 | 613 | 618 | rBV2 | 239 | 249 | 0.02% | 0.002% |
| 11 | 3.092 | 635 | 638 | 639 | rBV2 | 308 | 182 | 0.01% | 0.002% |
| 12 | 3.278 | 691 | 696 | 699 | rBV2 | 194 | 177 | 0.01% | 0.001% |
| 13 | 3.346 | 714 | 717 | 721 | rBV | 204 | 165 | 0.01% | 0.001% |
| 14 | 3.474 | 754 | 757 | 759 | rBV2 | 261 | 135 | 0.01% | 0.001% |
| 15 | 3.490 | 759 | 762 | 766 | rVV2 | 340 | 299 | 0.02% | 0.002% |
| 16 | 3.542 | 777 | 778 | 780 | rBV | 232 | 50 | 0.00% | 0.000% |
| 17 | 3.574 | 785 | 788 | 791 | rBV | 121 | 82 | 0.01% | 0.001% |
| 18 | 3.590 | 791 | 793 | 795 | rBV | 253 | 118 | 0.01% | 0.001% |
| 19 | 3.648 | 807 | 811 | 816 | rBV2 | 195 | 195 | 0.01% | 0.002% |
| 20 | 3.670 | 816 | 818 | 820 | rBV2 | 152 | 92 | 0.01% | 0.001% |
| 21 | 3.683 | 820 | 822 | 823 | rBV2 | 122 | 33 | 0.00% | 0.000% |
| 22 | 3.728 | 833 | 836 | 843 | rVB2 | 242 | 294 | 0.02% | 0.002% |
| 23 | 3.793 | 843 | 856 | 895 | rBV | 125667 | 436767 | 28.53% | 3.619% |
| 24 | 4.246 | 981 | 997 | 1031 | rBV | 238744 | 620015 | 40.49% | 5.137% |
| 25 | 4.513 | 1071 | 1080 | 1105 | rVB5 | 10565 | 28476 | 1.86% | 0.236% |
| 26 | 4.600 | 1105 | 1107 | 1111 | rBV | 267 | 149 | 0.01% | 0.001% |
| 27 | 4.731 | 1145 | 1148 | 1151 | rVB | 318 | 168 | 0.01% | 0.001% |
| 28 | 4.754 | 1151 | 1155 | 1157 | rBV | 262 | 184 | 0.01% | 0.002% |
| 29 | 4.773 | 1157 | 1161 | 1167 | rVB2 | 269 | 318 | 0.02% | 0.003% |
| 30 | 4.809 | 1167 | 1172 | 1177 | rBV3 | 295 | 312 | 0.02% | 0.003% |
| 31 | 4.828 | 1177 | 1178 | 1179 | rBV | 229 | 55 | 0.00% | 0.000% |
| 32 | 4.886 | 1192 | 1196 | 1198 | rBV | 285 | 184 | 0.01% | 0.002% |
| 33 | 4.953 | 1201 | 1217 | 1250 | rBV2 | 577918 | 1531150 | 100.00% | 12.686% |
| 34 | 5.400 | 1353 | 1356 | 1357 | rBV2 | 188 | 98 | 0.01% | 0.001% |
| 35 | 5.407 | 1357 | 1358 | 1360 | rBV2 | 239 | 89 | 0.01% | 0.001% |
| 36 | 5.442 | 1367 | 1369 | 1372 | rVB2 | 324 | 124 | 0.01% | 0.001% |

Data Path : Z:\voasrv\HPCHEM1\MSVOA_V\Data\VV031924\
 Data File : VV034712.D
 Acq On : 18 Mar 2024 21:55
 Operator : SY/MD
 Sample : P1766-15
 Misc : 5.0mL/MSVOA_V/WATER
 ALS Vial : 20 Sample Multiplier: 1

Instrument :
 MSVOA_V
 ClientSampleId :
 COGN5

Integration Parameters: LSCINT.P

Integrator: RTE
 Smoothing : OFF
 Sampling : 1
 Start Thrs: 0.2
 Stop Thrs : 0

Filtering: 5
 Min Area: 0 % of largest Peak
 Max Peaks: 100
 Peak Location: TOP

If leading or trailing edge < 100 prefer < Baseline drop else tangent >
 Peak separation: 5

Method : Z:\voasrv\HPCHEM1\MSVOA_V\Method\SFAMVLM022924WMA.M
 Title : VOC Analysis

| | | | | | | | | | |
|----|-------|------|------|------|------|--------|---------|--------|--------|
| 37 | 5.458 | 1372 | 1374 | 1375 | rBV | 192 | 98 | 0.01% | 0.001% |
| 38 | 5.468 | 1375 | 1377 | 1382 | rVB | 359 | 173 | 0.01% | 0.001% |
| 39 | 5.532 | 1386 | 1397 | 1434 | rBV | 377494 | 789474 | 51.56% | 6.541% |
| 40 | 5.831 | 1478 | 1490 | 1517 | rBV | 428081 | 875186 | 57.16% | 7.251% |
| 41 | 5.985 | 1526 | 1538 | 1574 | rVB | 326391 | 674847 | 44.07% | 5.591% |
| 42 | 6.246 | 1617 | 1619 | 1623 | rVB2 | 545 | 306 | 0.02% | 0.003% |
| 43 | 6.275 | 1626 | 1628 | 1632 | rVB2 | 213 | 102 | 0.01% | 0.001% |
| 44 | 6.326 | 1640 | 1644 | 1645 | rBV | 207 | 165 | 0.01% | 0.001% |
| 45 | 6.368 | 1653 | 1657 | 1658 | rBV | 221 | 136 | 0.01% | 0.001% |
| 46 | 6.374 | 1658 | 1659 | 1662 | rVB | 261 | 110 | 0.01% | 0.001% |
| 47 | 6.500 | 1694 | 1698 | 1701 | rBV2 | 237 | 179 | 0.01% | 0.001% |
| 48 | 6.538 | 1707 | 1710 | 1711 | rBV | 68 | 38 | 0.00% | 0.000% |
| 49 | 6.670 | 1745 | 1751 | 1754 | rBV2 | 308 | 285 | 0.02% | 0.002% |
| 50 | 6.715 | 1762 | 1765 | 1768 | rBV | 126 | 94 | 0.01% | 0.001% |
| 51 | 6.738 | 1770 | 1772 | 1775 | rVV2 | 294 | 130 | 0.01% | 0.001% |
| 52 | 6.754 | 1775 | 1777 | 1780 | rVV | 184 | 102 | 0.01% | 0.001% |
| 53 | 6.805 | 1790 | 1793 | 1796 | rBV | 178 | 110 | 0.01% | 0.001% |
| 54 | 6.911 | 1816 | 1826 | 1859 | rBV | 175912 | 334821 | 21.87% | 2.774% |
| 55 | 7.243 | 1918 | 1929 | 1954 | rBV | 687940 | 1193784 | 77.97% | 9.891% |
| 56 | 7.551 | 2016 | 2025 | 2060 | rBV | 116641 | 220624 | 14.41% | 1.828% |
| 57 | 7.841 | 2111 | 2115 | 2118 | rBV2 | 425 | 329 | 0.02% | 0.003% |
| 58 | 7.944 | 2145 | 2147 | 2148 | rBV | 105 | 49 | 0.00% | 0.000% |
| 59 | 8.024 | 2163 | 2172 | 2220 | rBV | 344364 | 682524 | 44.58% | 5.655% |
| 60 | 8.558 | 2336 | 2338 | 2342 | rBV3 | 254 | 136 | 0.01% | 0.001% |
| 61 | 8.648 | 2361 | 2366 | 2368 | rBV2 | 291 | 272 | 0.02% | 0.002% |
| 62 | 8.783 | 2397 | 2408 | 2442 | rBV | 582312 | 963687 | 62.94% | 7.985% |
| 63 | 9.046 | 2488 | 2490 | 2492 | rBV2 | 306 | 150 | 0.01% | 0.001% |
| 64 | 9.120 | 2511 | 2513 | 2515 | rVB2 | 182 | 75 | 0.00% | 0.001% |
| 65 | 9.149 | 2520 | 2522 | 2526 | rVB2 | 368 | 181 | 0.01% | 0.001% |
| 66 | 9.169 | 2526 | 2528 | 2529 | rBV2 | 119 | 49 | 0.00% | 0.000% |
| 67 | 9.217 | 2535 | 2543 | 2546 | rBV2 | 430 | 460 | 0.03% | 0.004% |
| 68 | 9.249 | 2550 | 2553 | 2557 | rVB2 | 254 | 198 | 0.01% | 0.002% |
| 69 | 9.271 | 2558 | 2560 | 2565 | rVB | 200 | 137 | 0.01% | 0.001% |
| 70 | 9.307 | 2565 | 2571 | 2573 | rBV2 | 249 | 269 | 0.02% | 0.002% |
| 71 | 9.374 | 2588 | 2592 | 2595 | rBV | 243 | 216 | 0.01% | 0.002% |
| 72 | 9.452 | 2614 | 2616 | 2618 | rBV | 156 | 82 | 0.01% | 0.001% |
| 73 | 9.532 | 2639 | 2641 | 2643 | rBV | 153 | 43 | 0.00% | 0.000% |
| 74 | 9.638 | 2672 | 2674 | 2675 | rBV | 211 | 52 | 0.00% | 0.000% |
| 75 | 9.815 | 2726 | 2729 | 2730 | rBV | 207 | 109 | 0.01% | 0.001% |
| 76 | 9.905 | 2753 | 2757 | 2759 | rBV | 178 | 146 | 0.01% | 0.001% |

Data Path : Z:\voasrv\HPCHEM1\MSVOA_V\Data\VW031924\
 Data File : VW034712.D
 Acq On : 18 Mar 2024 21:55
 Operator : SY/MD
 Sample : P1766-15
 Misc : 5.0mL/MSVOA_V/WATER
 ALS Vial : 20 Sample Multiplier: 1

Instrument :
 MSVOA_V
 ClientSampleId :
 COGN5

Integration Parameters: LSCINT.P
 Integrator: RTE
 Smoothing : OFF
 Sampling : 1
 Start Thrs : 0.2
 Stop Thrs : 0
 Filtering: 5
 Min Area: 0 % of largest Peak
 Max Peaks: 100
 Peak Location: TOP

If leading or trailing edge < 100 prefer < Baseline drop else tangent >
 Peak separation: 5

Method : Z:\voasrv\HPCHEM1\MSVOA_V\Method\SFAMVLM022924WMA.M
 Title : VOC Analysis

| | | | | | | | | | |
|-----|--------|------|------|------|------|--------|---------|--------|--------|
| 77 | 9.972 | 2775 | 2778 | 2782 | rBV2 | 178 | 123 | 0.01% | 0.001% |
| 78 | 9.995 | 2783 | 2785 | 2786 | rBV | 301 | 78 | 0.01% | 0.001% |
| 79 | 10.043 | 2797 | 2800 | 2804 | rVB2 | 292 | 223 | 0.01% | 0.002% |
| 80 | 10.062 | 2804 | 2806 | 2807 | rBV | 132 | 62 | 0.00% | 0.001% |
| 81 | 10.152 | 2822 | 2834 | 2859 | rBV | 433495 | 684771 | 44.72% | 5.674% |
| 82 | 10.371 | 2900 | 2902 | 2904 | rBV2 | 142 | 45 | 0.00% | 0.000% |
| 83 | 10.394 | 2907 | 2909 | 2913 | rBV2 | 229 | 149 | 0.01% | 0.001% |
| 84 | 10.480 | 2934 | 2936 | 2938 | rBV | 247 | 102 | 0.01% | 0.001% |
| 85 | 10.593 | 2966 | 2971 | 2974 | rBV2 | 198 | 232 | 0.02% | 0.002% |
| 86 | 10.802 | 3033 | 3036 | 3037 | rBV | 195 | 120 | 0.01% | 0.001% |
| 87 | 10.866 | 3055 | 3056 | 3057 | rBV | 255 | 67 | 0.00% | 0.001% |
| 88 | 10.982 | 3087 | 3092 | 3093 | rBV | 311 | 206 | 0.01% | 0.002% |
| 89 | 11.185 | 3144 | 3155 | 3184 | rBV | 559960 | 872717 | 57.00% | 7.231% |
| 90 | 11.426 | 3228 | 3230 | 3232 | rBV | 252 | 93 | 0.01% | 0.001% |
| 91 | 11.561 | 3260 | 3272 | 3297 | rBV | 636822 | 1029766 | 67.25% | 8.532% |
| 92 | 12.291 | 3497 | 3499 | 3501 | rBV | 188 | 72 | 0.00% | 0.001% |
| 93 | 12.657 | 3611 | 3613 | 3614 | rBV | 286 | 118 | 0.01% | 0.001% |
| 94 | 12.802 | 3655 | 3658 | 3661 | rBV3 | 288 | 208 | 0.01% | 0.002% |
| 95 | 13.258 | 3796 | 3800 | 3805 | rBV2 | 400 | 253 | 0.02% | 0.002% |
| 96 | 13.287 | 3805 | 3809 | 3817 | rBV3 | 508 | 595 | 0.04% | 0.005% |
| 97 | 13.541 | 3884 | 3888 | 3893 | rBV3 | 483 | 466 | 0.03% | 0.004% |
| 98 | 13.815 | 3969 | 3973 | 3976 | rBV4 | 428 | 389 | 0.03% | 0.003% |
| 99 | 13.847 | 3981 | 3983 | 3989 | rBV3 | 431 | 322 | 0.02% | 0.003% |
| 100 | 13.876 | 3990 | 3992 | 3994 | rBV | 331 | 132 | 0.01% | 0.001% |

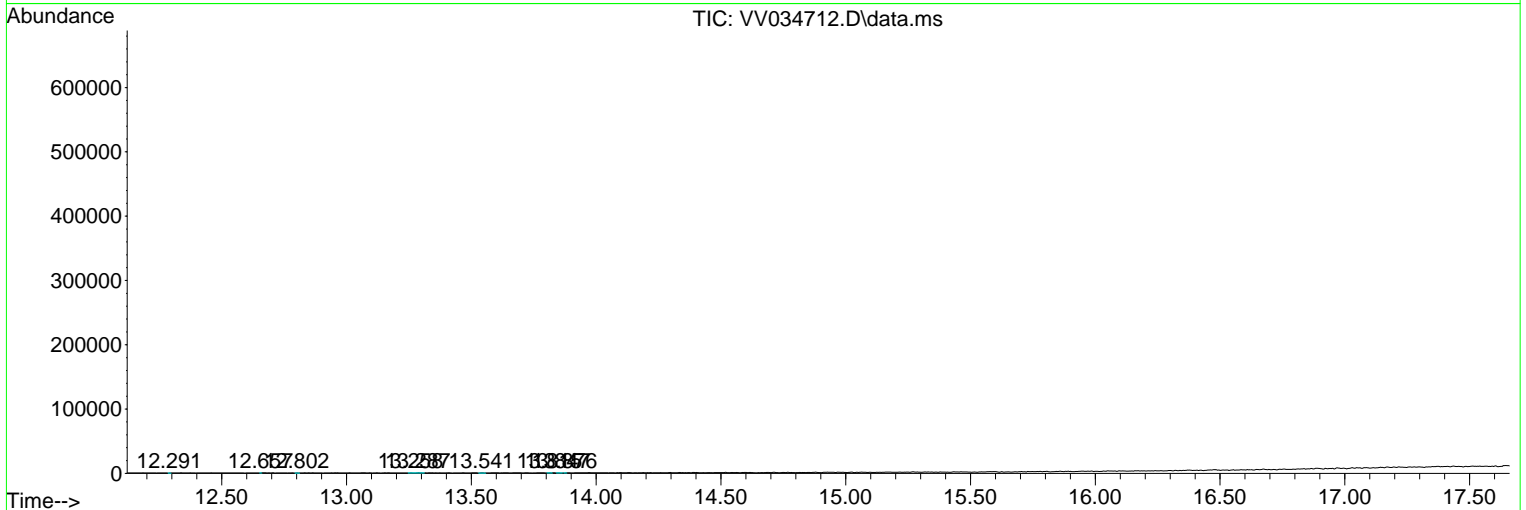
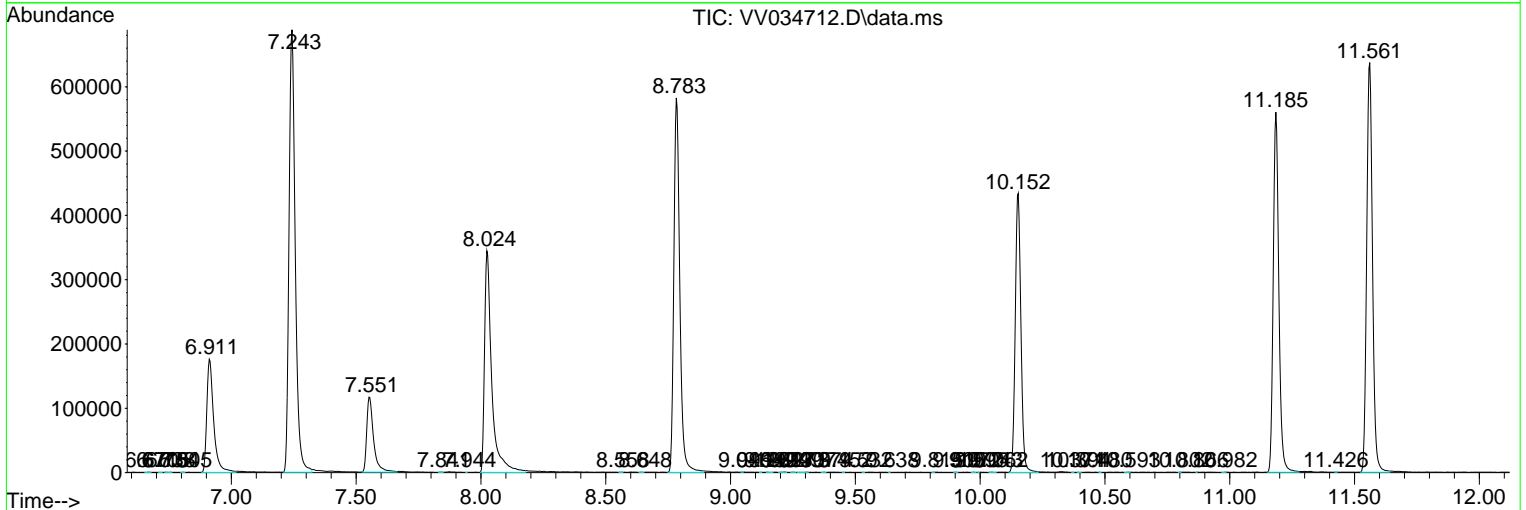
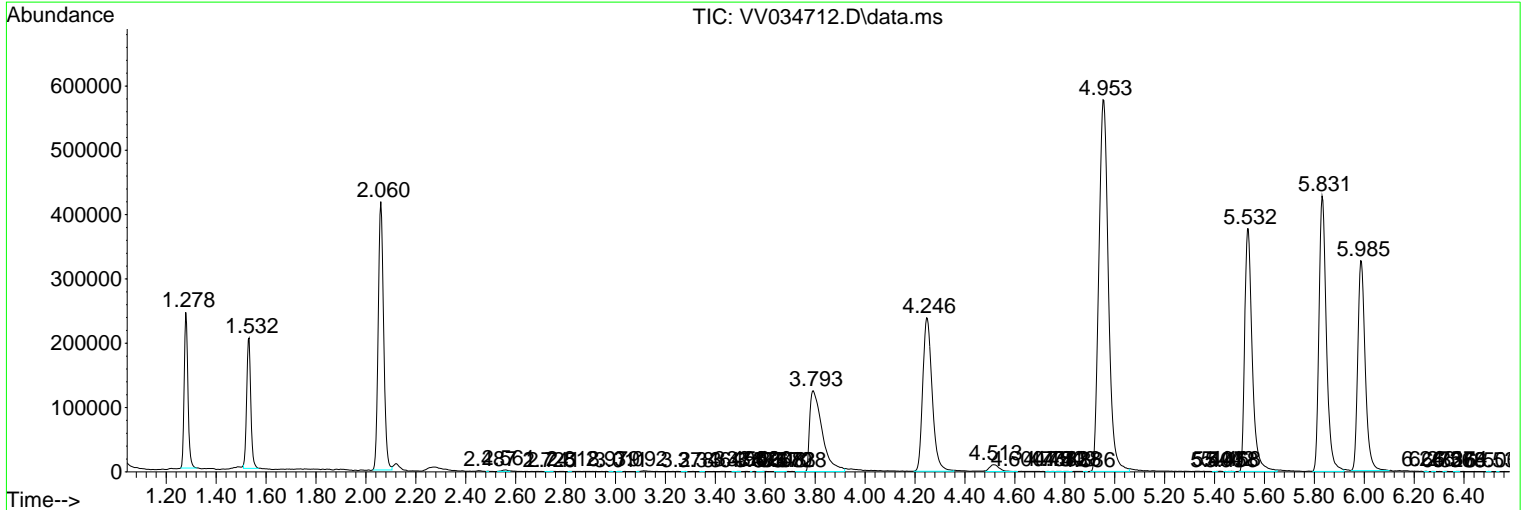
Sum of corrected areas: 12069326

Data Path : Z:\voasrv\HPCHEM1\MSVOA_V\Data\VV031924\
 Data File : VV034712.D
 Acq On : 18 Mar 2024 21:55
 Operator : SY/MD
 Sample : P1766-15
 Misc : 5.0mL/MSVOA_V/WATER
 ALS Vial : 20 Sample Multiplier: 1

Instrument :
 MSVOA_V
ClientSampleId :
 COGN5

Quant Method : Z:\voasrv\HPCHEM1\MSVOA_V\Method\SFAMVLM022924WMA.M
 Quant Title : VOC Analysis

TIC Library : C:\Database\NIST20.L
 TIC Integration Parameters: LSCINT.P



Library Search Compound Report

Data Path : Z:\voasrv\HPCHEM1\MSVOA_V\Data\VV031924\
Data File : VV034712.D
Acq On : 18 Mar 2024 21:55
Operator : SY/MD
Sample : P1766-15
Misc : 5.0mL/MSVOA_V/WATER
ALS Vial : 20 Sample Multiplier: 1

Instrument :
MSVOA_V
ClientSampleId :
COGN5

Quant Method : Z:\voasrv\HPCHEM1\MSVOA_V\Method\SFAMVLM022924WMA.M
Quant Title : VOC Analysis

TIC Library : C:\Database\NIST20.L
TIC Integration Parameters: LSCINT.P

No Library Search Compounds Detected

Data Path : Z:\voasrv\HPCHEM1\MSVOA_V\Data\VV031924\
Data File : VV034712.D
Acq On : 18 Mar 2024 21:55
Operator : SY/MD
Sample : P1766-15
Misc : 5.0mL/MSVOA_V/WATER
ALS Vial : 20 Sample Multiplier: 1

Instrument :
MSVOA_V
ClientSampleId :
COGN5

Quant Method : Z:\voasrv\HPCHEM1\MSVOA_V\Method\SFAMVLM022924WMA.M
Quant Title : VOC Analysis

TIC Library : C:\Database\NIST0.L
TIC Integration Parameters: LSCINT.P

| TIC Top Hit name | RT | EstConc | Units | Response | --Internal Standard-- | | |
|------------------|----|---------|-------|----------|-----------------------|----|-----------|
| | | | | | # | RT | Resp Conc |
