

Data File : VV009815.D  
 Acq On : 21 Mar 2019 23:51  
 Operator : SY/MD  
 Sample : K2049-16  
 Misc : 25.0mL/MSVOA\_V/WATER  
 ALS Vial : 27 Sample Multiplier: 1

Instrument :  
 MSVOA\_V  
 ClientSampleId :  
 P024-TW002-01

Quant Time: Mar 22 08:19:45 2019  
 Quant Method : Z:\VOASRV\HPCHEM1\MSVOA\_V\METHOD\SOMVTR032119WMA.M  
 Quant Title : TRACE VOA SOM01.0  
 QLast Update : Fri Mar 22 08:14:34 2019  
 Response via : Initial Calibration

Internal Standards	R.T.	QIon	Response	Conc	Units	Dev(Min)
1) 1,4-Difluorobenzene	5.67	114	86741	5.00	ug/L	0.00
28) Chlorobenzene-d5	8.90	117	89292	5.00	ug/L	0.00
60) 1,4-Dichlorobenzene-d4	11.30	152	39120	5.00	ug/L	0.00

System Monitoring Compounds

4) Vinyl Chloride-d3	1.32	65	53426	5.10	ug/L	0.00
Spiked Amount	5.000	Range	40 - 130	Recovery	=	102.00%
7) Chloroethane-d5	1.59	69	51128	5.61	ug/L	0.00
Spiked Amount	5.000	Range	65 - 130	Recovery	=	112.20%
11) 1,1-Dichloroethene-d2	2.13	63	106858	4.30	ug/L	0.00
Spiked Amount	5.000	Range	60 - 125	Recovery	=	86.00%
20) 2-Butanone-d5	3.95	46	67432	55.58	ug/L	-0.02
Spiked Amount	50.000	Range	40 - 130	Recovery	=	111.16%
24) Chloroform-d	4.41	84	49924	4.52	ug/L	0.00
Spiked Amount	5.000	Range	70 - 125	Recovery	=	90.40%
26) 1,2-Dichloroethane-d4	5.09	65	29814	5.86	ug/L	0.00
Spiked Amount	5.000	Range	70 - 130	Recovery	=	117.20%
32) Benzene-d6	5.10	84	121752	5.25	ug/L	0.00
Spiked Amount	5.000	Range	70 - 125	Recovery	=	105.00%
36) 1,2-Dichloropropane-d6	6.12	67	36931	5.34	ug/L	0.00
Spiked Amount	5.000	Range	60 - 140	Recovery	=	106.80%
41) Toluene-d8	7.36	98	109152	4.81	ug/L	0.00
Spiked Amount	5.000	Range	70 - 130	Recovery	=	96.20%
43) trans-1,3-Dichloropropene-	7.67	79	11438	4.43	ug/L	0.00
Spiked Amount	5.000	Range	55 - 130	Recovery	=	88.60%
46) 2-Hexanone-d5	8.14	63	59718	54.41	ug/L	0.00
Spiked Amount	50.000	Range	45 - 130	Recovery	=	108.82%
57) 1,1,2,2-Tetrachloroethane-	10.26	84	28072	5.25	ug/L	0.00
Spiked Amount	5.000	Range	65 - 120	Recovery	=	105.00%
64) 1,2-Dichlorobenzene-d4	11.68	152	40724	5.73	ug/L	0.00
Spiked Amount	5.000	Range	80 - 120	Recovery	=	114.60%

Target Compounds

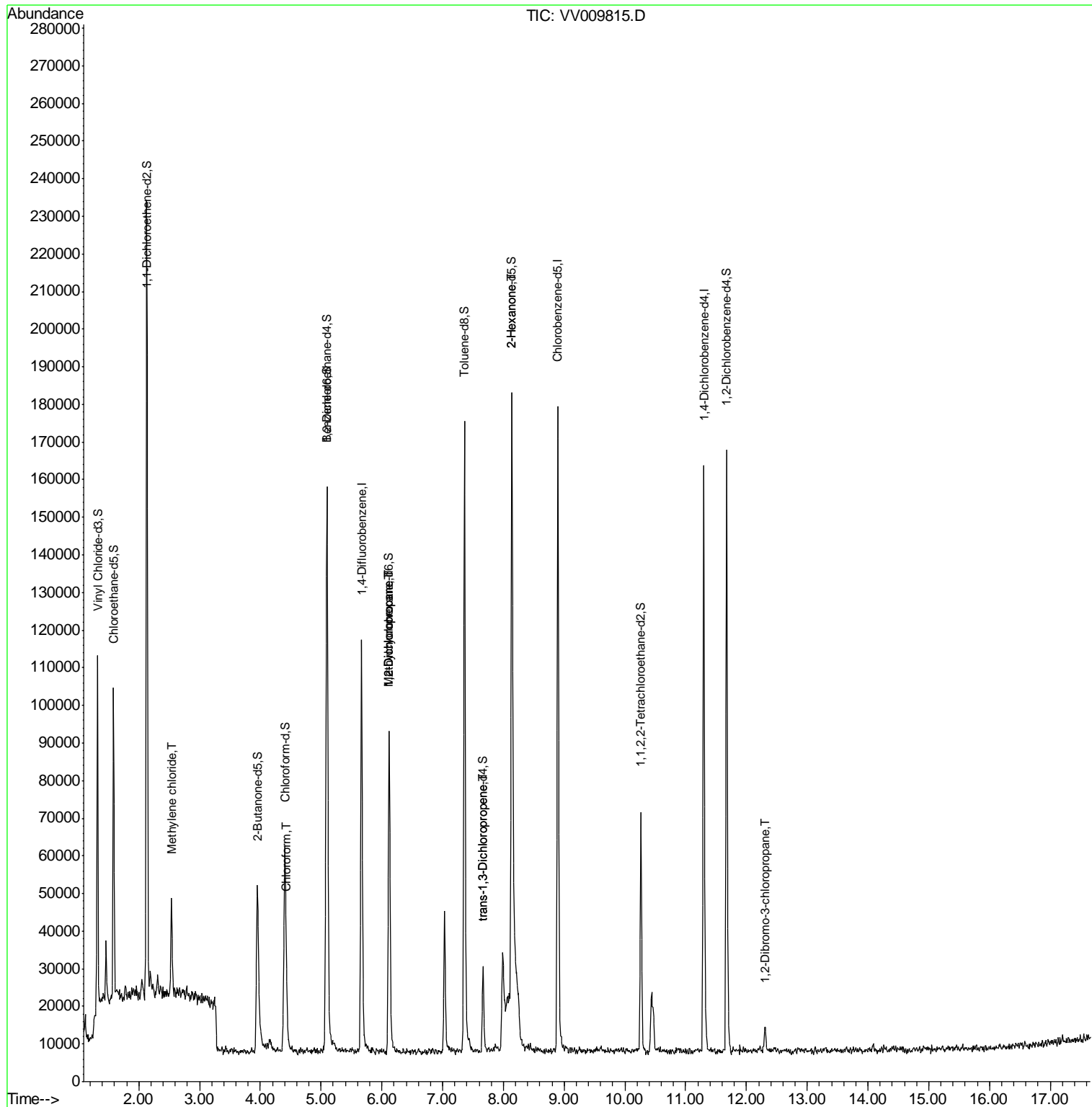
Target Compounds	R.T.	QIon	Response	Conc	Units	Qvalue
16) Methylene chloride	2.54	84	10061	0.769	ug/L	93
25) Chloroform	4.43	83	8327	0.792	ug/L	96
35) Methylcyclohexane	6.12	83	9011	0.830	ug/L #	20
37) 1,2-Dichloropropane	6.12	63	4658	0.743	ug/L #	89
44) trans-1,3-Dichloropropene	7.67	75	570	0.084	ug/L	95
48) 2-Hexanone	8.13	43	9623	3.734	ug/L #	71
66) 1,2-Dibromo-3-chloropropan	12.32	75	129	0.206	ug/L #	1

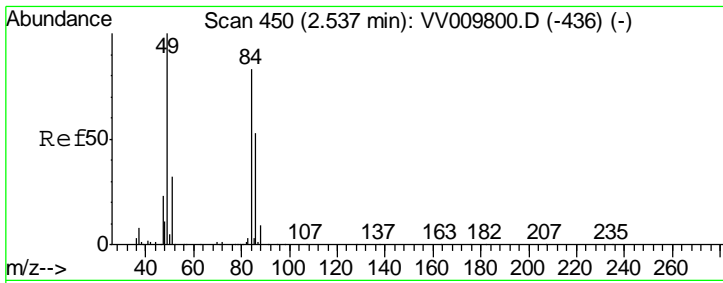
(#) = qualifier out of range (m) = manual integration (+) = signals summed

Data File : VV009815.D  
Acq On : 21 Mar 2019 23:51  
Operator : SY/MD  
Sample : K2049-16  
Misc : 25.0mL/MSVOA\_V/WATER  
ALS Vial : 27 Sample Multiplier: 1

Instrument :  
MSVOA\_V  
ClientSampleId :  
P024-TW002-01

Quant Time: Mar 22 08:19:45 2019  
Quant Method : Z:\VOASRV\HPCHEM1\MSVOA\_V\METHOD\SOMVTR032119WMA.M  
Quant Title : TRACE VOA SOM01.0  
QLast Update : Fri Mar 22 08:14:34 2019  
Response via : Initial Calibration

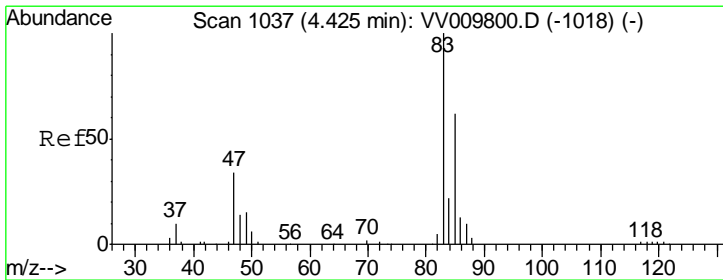
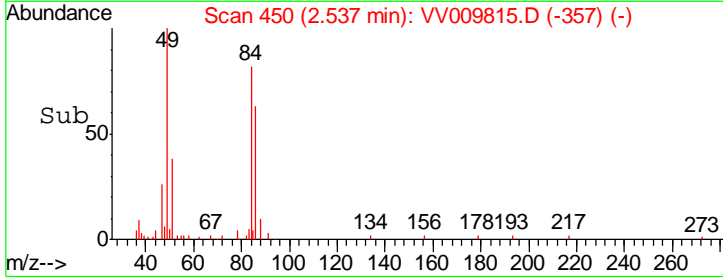
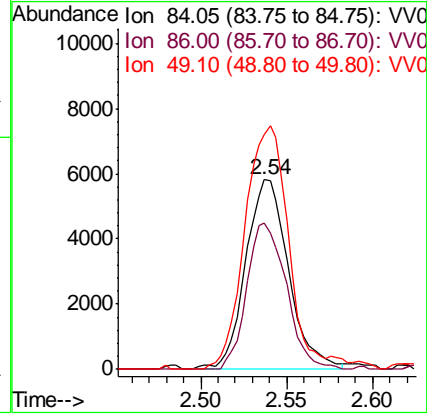
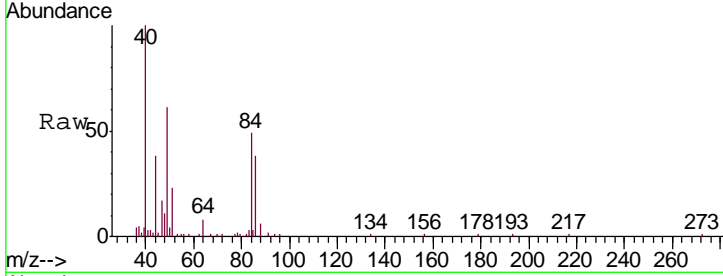




#16  
 Methylene chloride  
 Concen: 0.769 ug/L  
 RT: 2.54 min Scan# 450  
 Delta R.T. -0.00 min  
 Lab File: VV009815.D  
 Acq: 21 Mar 2019 23:51

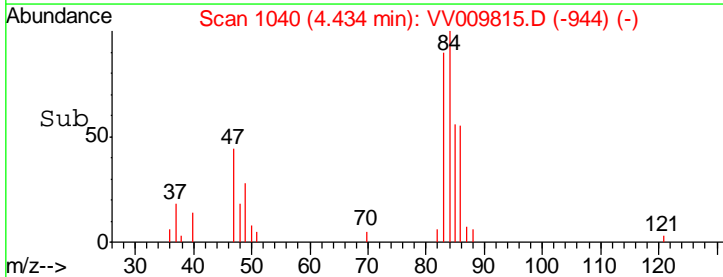
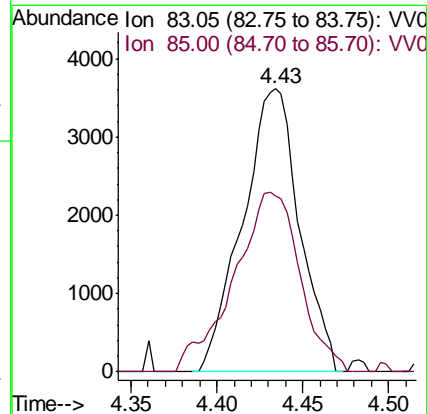
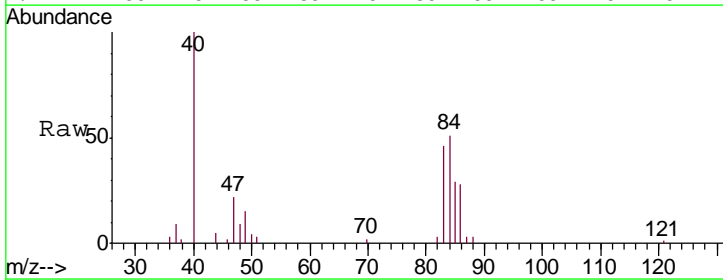
Instrument : MSVOA\_V  
 ClientSampled : P024-TW002-01

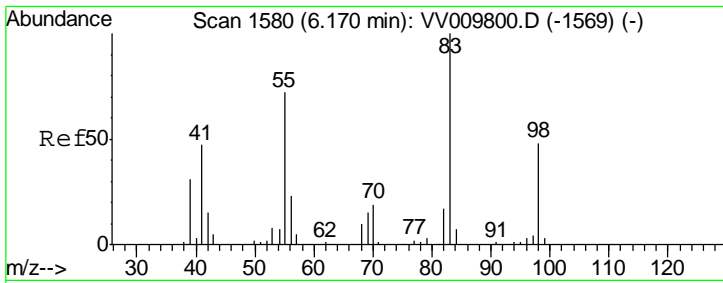
Tgt Ion	Resp	Lower	Upper
84	10061		
84	100		
86	77.2	46.1	85.5
49	123.8	89.7	166.5



#25  
 Chloroform  
 Concen: 0.792 ug/L  
 RT: 4.43 min Scan# 1040  
 Delta R.T. 0.01 min  
 Lab File: VV009815.D  
 Acq: 21 Mar 2019 23:51

Tgt Ion	Resp	Lower	Upper
83	8327		
83	100		
85	62.2	45.7	84.9

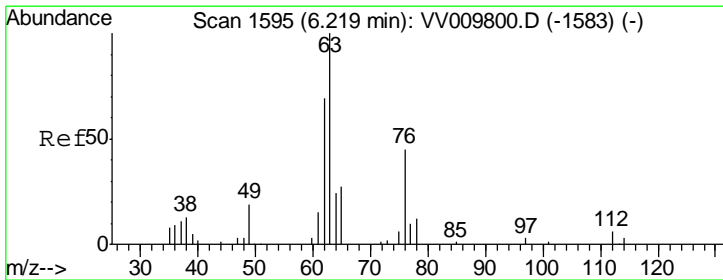
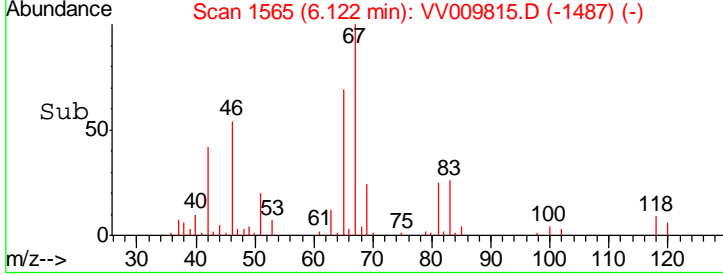
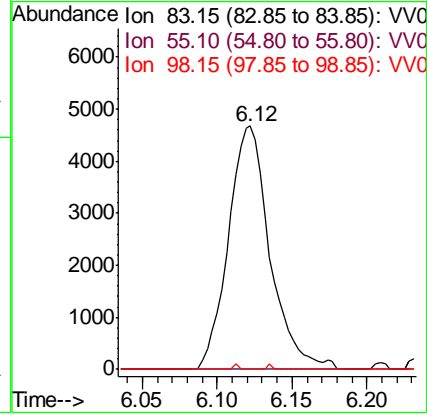
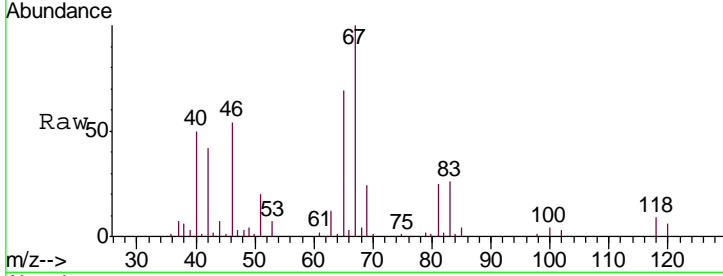




#35  
 Methylcyclohexane  
 Concen: 0.830 ug/L  
 RT: 6.12 min Scan# 1565  
 Delta R.T. -0.05 min  
 Lab File: VV009815.D  
 Acq: 21 Mar 2019 23:51

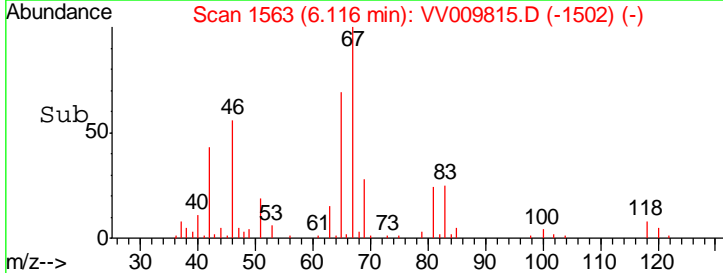
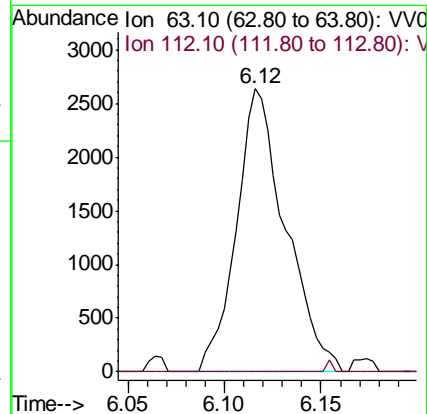
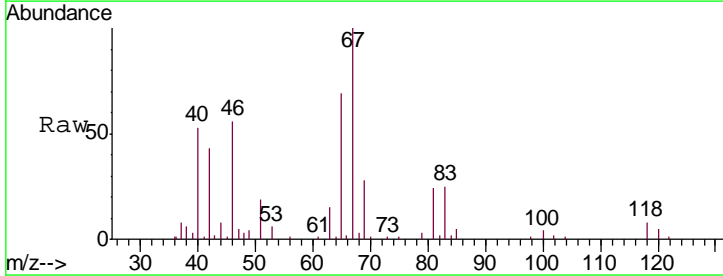
Instrument :  
 MSVOA\_V  
 ClientSampled :  
 P024-TW002-01

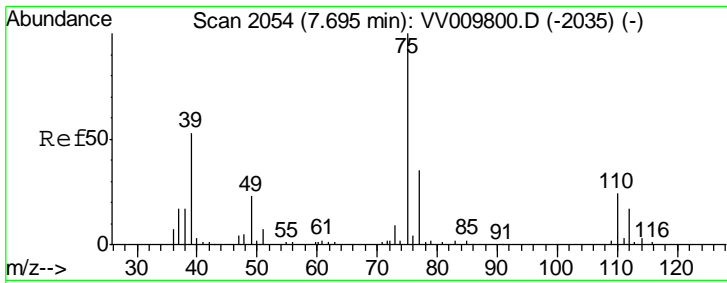
Tgt Ion	Resp	Lower	Upper
83	9011		
55	0.2	57.4	86.2#
98	0.3	38.9	58.3#



#37  
 1,2-Dichloropropane  
 Concen: 0.743 ug/L  
 RT: 6.12 min Scan# 1563  
 Delta R.T. -0.10 min  
 Lab File: VV009815.D  
 Acq: 21 Mar 2019 23:51

Tgt Ion	Resp	Lower	Upper
63	4658		
112	0.5	3.3	4.9#

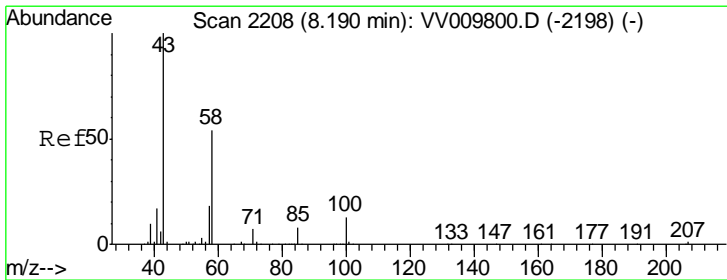
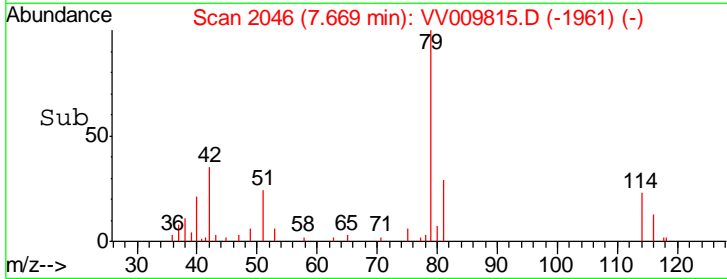
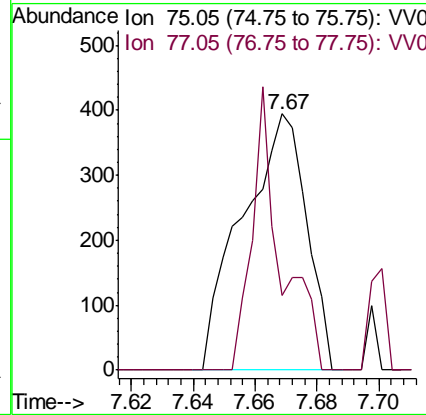
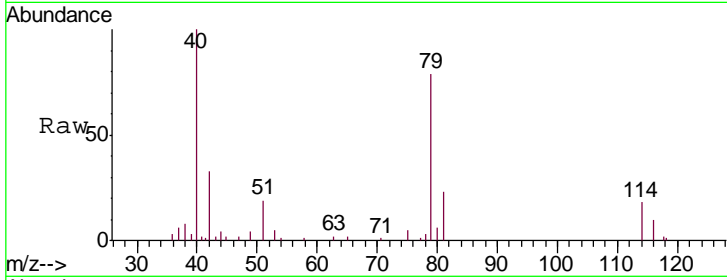




#44  
 trans-1,3-Dichloropropene  
 Concen: 0.084 ug/L  
 RT: 7.67 min Scan# 2046  
 Delta R.T. -0.03 min  
 Lab File: VV009815.D  
 Acq: 21 Mar 2019 23:51

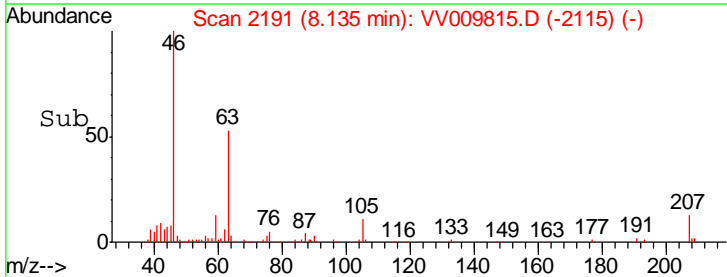
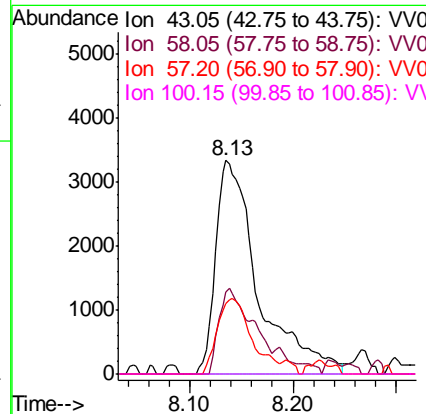
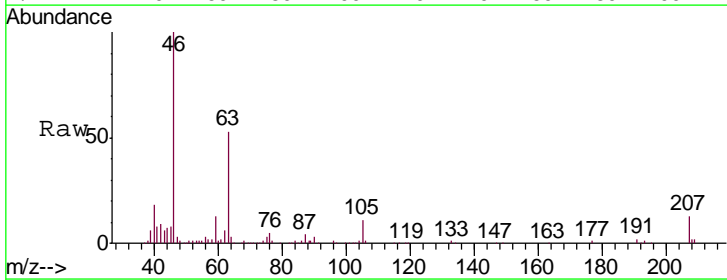
Instrument :  
 MSVOA\_V  
 ClientSampleId :  
 P024-TW002-01

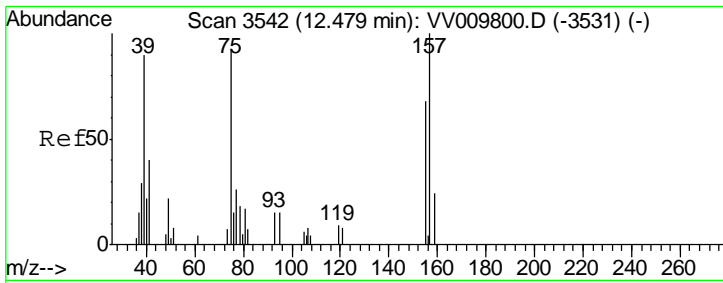
Tgt Ion: 75 Resp: 570  
 Ion Ratio Lower Upper  
 75 100  
 77 29.4 22.7 42.3



#48  
 2-Hexanone  
 Concen: 3.734 ug/L  
 RT: 8.13 min Scan# 2191  
 Delta R.T. -0.05 min  
 Lab File: VV009815.D  
 Acq: 21 Mar 2019 23:51

Tgt Ion: 43 Resp: 9623  
 Ion Ratio Lower Upper  
 43 100  
 58 31.5 43.4 65.0#  
 57 28.2 15.0 22.4#  
 100 0.0 9.6 14.4#





#66  
 1,2-Dibromo-3-chloropropane  
 Concen: 0.206 ug/L  
 RT: 12.32 min Scan# 3492  
 Delta R.T. -0.16 min  
 Lab File: VV009815.D  
 Acq: 21 Mar 2019 23:51

Instrument : MSVOA\_V  
 ClientSampled : P024-TW002-01

Tgt Ion	Resp	Lower	Upper
75	100		
155	0.0	73.5	110.3#
157	0.0	88.3	132.5#

