

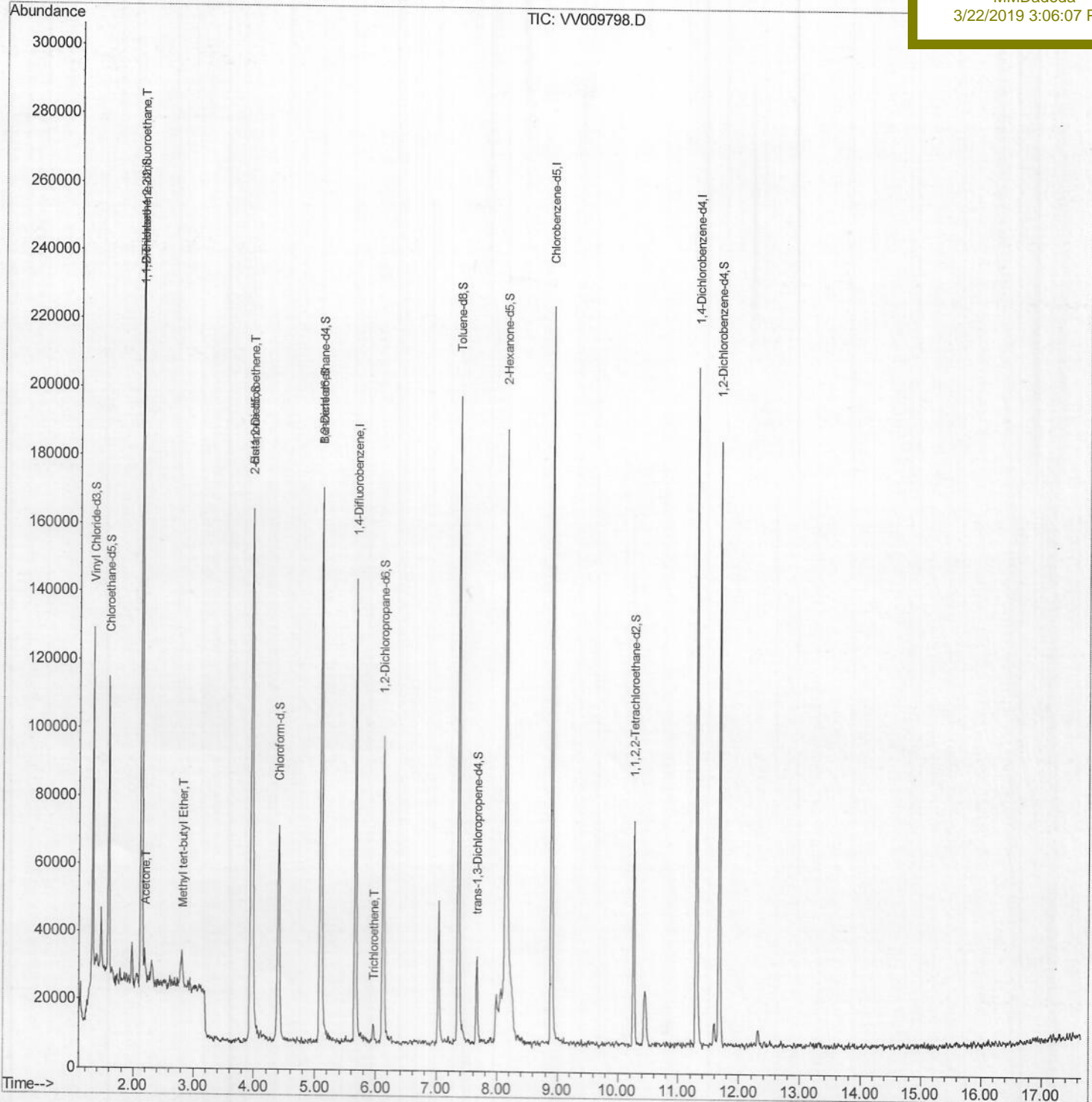
Data File : VV009798.D
Acq On : 21 Mar 2019 16:01
Operator : SY/MD
Sample : K1955-02
Misc : 25.0mL/MSVOA_V/WATER
ALS Vial : 10 Sample Multiplier: 1

Quant Time: Mar 22 08:11:05 2019
Quant Method : Z:\VOASRV\HPCHEM1\MSVOA_V\METHOD\SOMVTR032119WMA.M
Quant Title : TRACE VOA SOM01.0
QLast Update : Thu Mar 21 15:15:58 2019
Response via : Initial Calibration

Instrument :
MSVOA_V
Client Sampled :
CWK15

Manual Integrations
APPROVED

MMDadoda
3/22/2019 3:06:07 PM



Data Path : Z:\VOASRV\HPCHEM1\MSVOA_V\DATA\VV032119\
 Quantitation Report (Qedit)

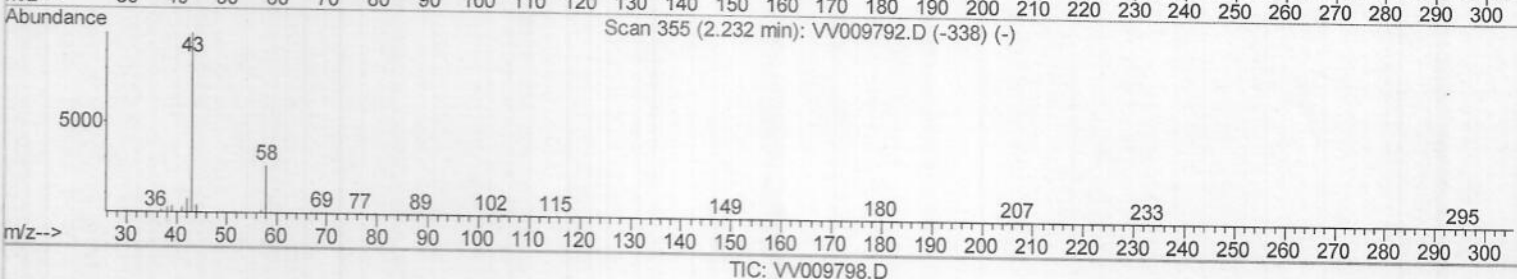
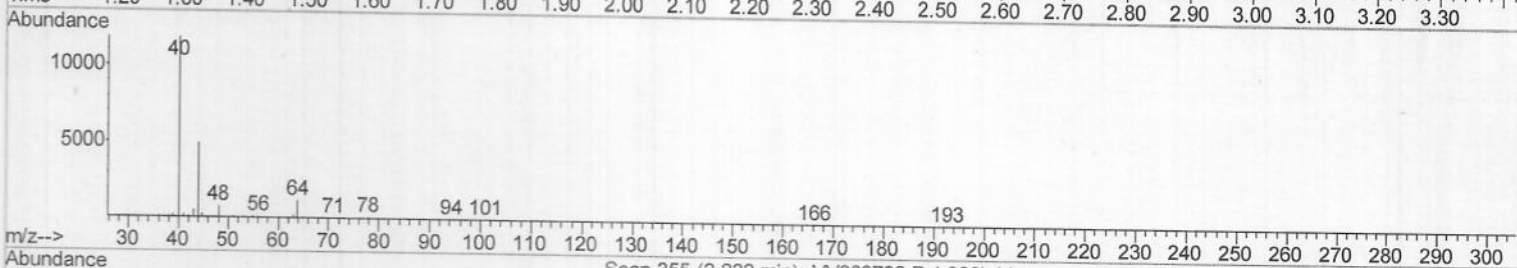
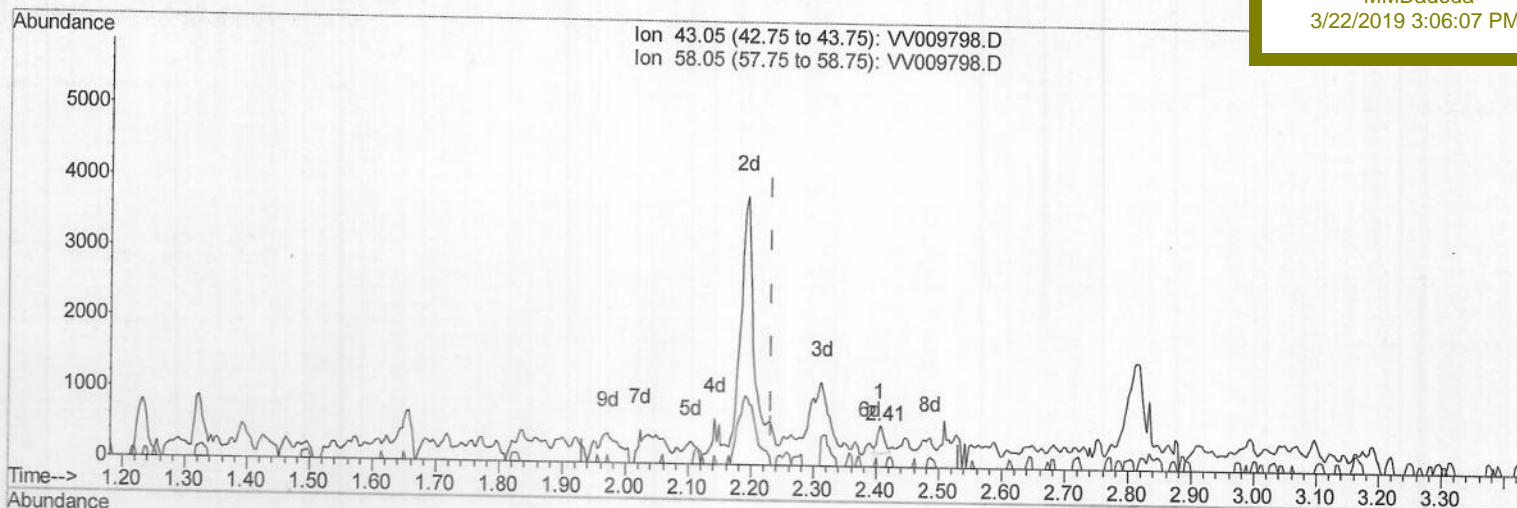
Data File : VV009798.D
 Acq On : 21 Mar 2019 16:01
 Operator : SY/MD
 Sample : K1955-02
 Misc : 25.0mL/MSVOA_V/WATER
 ALS Vial : 10 Sample Multiplier: 1

Quant Time: Mar 22 07:56:18 2019
 Quant Method : Z:\VOASRV\HPCHEM1\MSVOA_V\METHOD\SOMVTR032119WMA.M
 Quant Title : TRACE VOA SOM01.0
 QLast Update : Thu Mar 21 15:15:58 2019
 Response via : Initial Calibration

Instrument :
 MSVOA_V
 ClientSampled :
 CWK15

Manual Integrations
 APPROVED

MMDadoda
 3/22/2019 3:06:07 PM



(13) Acetone (T)
 2.406min (+0.174) 0.15ug/L
 response 303

Ion	Exp%	Act%
43.05	100	100
58.05	11.50	22.44
0.00	0.00	0.00
0.00	0.00	0.00

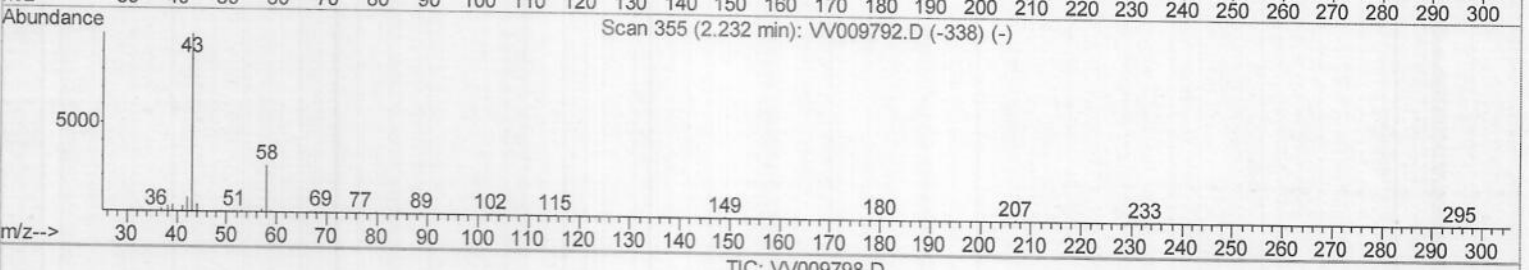
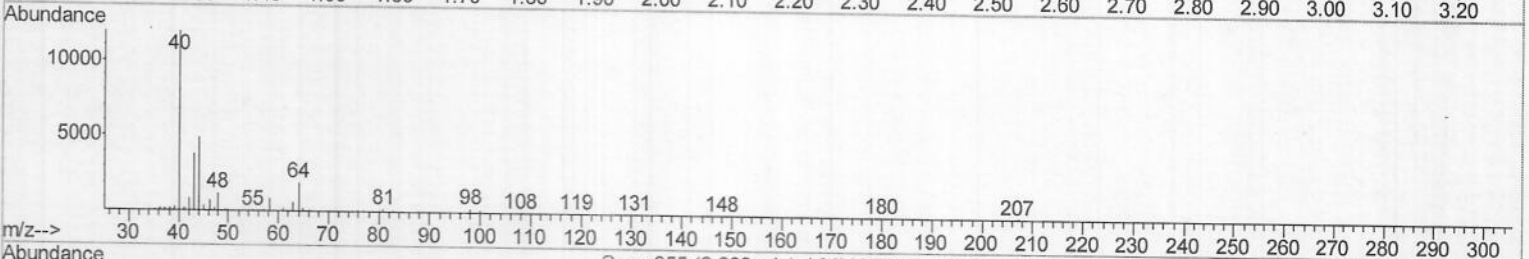
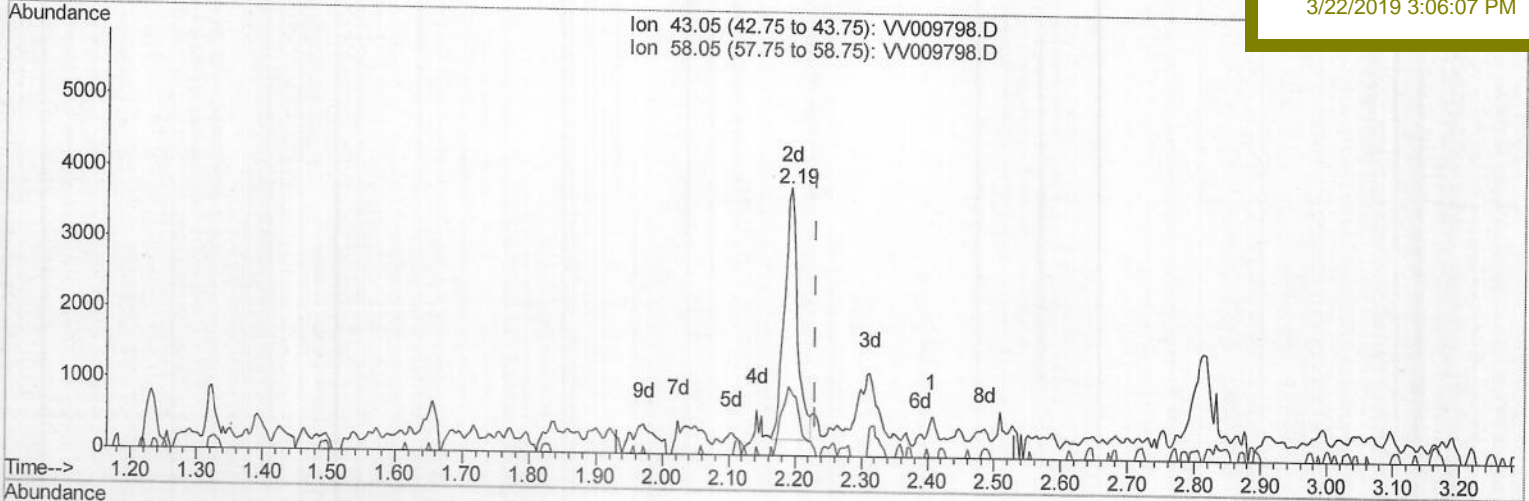
Data File : VV009798.D
 Acq On : 21 Mar 2019 16:01
 Operator : SY/MD
 Sample : K1955-02
 Misc : 25.0mL/MSVOA_V/WATER
 ALS Vial : 10 Sample Multiplier: 1

Instrument :
 MSVOA_V
 Client Sampled :
 CWK15

Quant Time: Mar 22 07:56:18 2019
 Quant Method : Z:\VOASRV\HPCHEM1\MSVOA_V\METHOD\SOMVTR032119WMA.M
 Quant Title : TRACE VOA SOM01.0
 QLast Update : Thu Mar 21 15:15:58 2019
 Response via : Initial Calibration

Manual Integrations
 APPROVED

MMDadoda
 3/22/2019 3:06:07 PM



TIC: VV009798.D

(13) Acetone (T)

2.193min (-0.039) 2.42ug/L m

response 4849

m.p
03/26/19

Ion	Exp%	Act%
43.05	100	100
58.05	11.50	1.40
0.00	0.00	0.00
0.00	0.00	0.00

Data File : VV009798.D
 Acq On : 21 Mar 2019 16:01
 Operator : SY/MD
 Sample : K1955-02
 Misc : 25.0mL/MSVOA_V/WATER
 ALS Vial : 10 Sample Multiplier: 1

Instrument :
 MSVOA_V
 Client Sampled :
 CWK15

Quant Time: Mar 22 08:11:05 2019
 Quant Method : Z:\VOASRV\HPCHEM1\MSVOA_V\METHOD\SOMVTR032119WMA.M
 Quant Title : TRACE VOA SOM01.0
 QLast Update : Thu Mar 21 15:15:58 2019
 Response via : Initial Calibration

Manual Integrations
 APPROVED

MMDadoda
 3/22/2019 3:06:07 PM

Internal Standards	R.T.	QIon	Response	Conc	Units	Dev (Min)
1) 1,4-Difluorobenzene	5.67	114	110526	5.00	ug/L	0.00
28) Chlorobenzene-d5	8.90	117	115140	5.00	ug/L	0.00
60) 1,4-Dichlorobenzene-d4	11.30	152	50561	5.00	ug/L	0.00

System Monitoring Compounds

4) Vinyl Chloride-d3	1.32	65	55255	4.14	ug/L	0.00
Spiked Amount	5.000	Range 40 - 130	Recovery	=	82.80%	
7) Chloroethane-d5	1.59	69	53049	4.57	ug/L	0.00
Spiked Amount	5.000	Range 65 - 130	Recovery	=	91.40%	
11) 1,1-Dichloroethene-d2	2.13	63	111097	3.51	ug/L	0.00
Spiked Amount	5.000	Range 60 - 125	Recovery	=	70.20%	
20) 2-Butanone-d5	3.95	46	73061	47.26	ug/L	-0.04
Spiked Amount	50.000	Range 40 - 130	Recovery	=	94.52%	
24) Chloroform-d	4.40	84	61817	4.39	ug/L	0.00
Spiked Amount	5.000	Range 70 - 125	Recovery	=	87.80%	
26) 1,2-Dichloroethane-d4	5.09	65	31034	4.79	ug/L	0.00
Spiked Amount	5.000	Range 70 - 130	Recovery	=	95.80%	
32) Benzene-d6	5.10	84	136980	4.58	ug/L	0.00
Spiked Amount	5.000	Range 70 - 125	Recovery	=	91.60%	
36) 1,2-Dichloropropane-d6	6.12	67	40892	4.59	ug/L	0.00
Spiked Amount	5.000	Range 60 - 140	Recovery	=	91.80%	
41) Toluene-d8	7.36	98	121576	4.16	ug/L	0.00
Spiked Amount	5.000	Range 70 - 130	Recovery	=	83.20%	
43) trans-1,3-Dichloropropene-	7.66	79	13170	3.96	ug/L	0.00
Spiked Amount	5.000	Range 55 - 130	Recovery	=	79.20%	
46) 2-Hexanone-d5	8.14	63	63242	44.68	ug/L	0.00
Spiked Amount	50.000	Range 45 - 130	Recovery	=	89.36%	
57) 1,1,2,2-Tetrachloroethane-	10.26	84	29242	4.24	ug/L	0.00
Spiked Amount	5.000	Range 65 - 120	Recovery	=	84.80%	
64) 1,2-Dichlorobenzene-d4	11.68	152	43307	4.72	ug/L	0.00
Spiked Amount	5.000	Range 80 - 120	Recovery	=	94.40%	

Target Compounds

Target Compounds	R.T.	QIon	Response	Conc	Units	Qvalue
10) 1,1,2-Trichloro-1,2,2-trif	2.14	101	7952	0.479	ug/L	90
13) Acetone	2.19	43	4849m)	2.422	ug/L	97
17) Methyl tert-butyl Ether	2.81	73	8990	0.264	ug/L	96
22) cis-1,2-Dichloroethene	3.96	96	66691	8.705	ug/L	95
34) Trichloroethene	5.96	95	1453	0.178	ug/L	95

M. P
 03/26/19

(#) = qualifier out of range (m) = manual integration (+) = signals summed