

Data Path : Z:\voasrv\HPCHEM1\MSVOA\_V\Data\VW032224\  
 Data File : VW034808.D  
 Acq On : 22 Mar 2024 10:56  
 Operator : SY/MD  
 Sample : P1822-02  
 Misc : 5.0mL/MSVOA\_V/WATER  
 ALS Vial : 7 Sample Multiplier: 1

Instrument :  
 MSVOA\_V  
 ClientSampleId :

Quant Time: Mar 23 04:58:39 2024  
 Quant Method : Z:\voasrv\HPCHEM1\MSVOA\_V\Method\SFAMVLM022924WMA.M  
 Quant Title : VOC Analysis  
 QLast Update : Sat Mar 23 04:57:15 2024  
 Response via : Initial Calibration

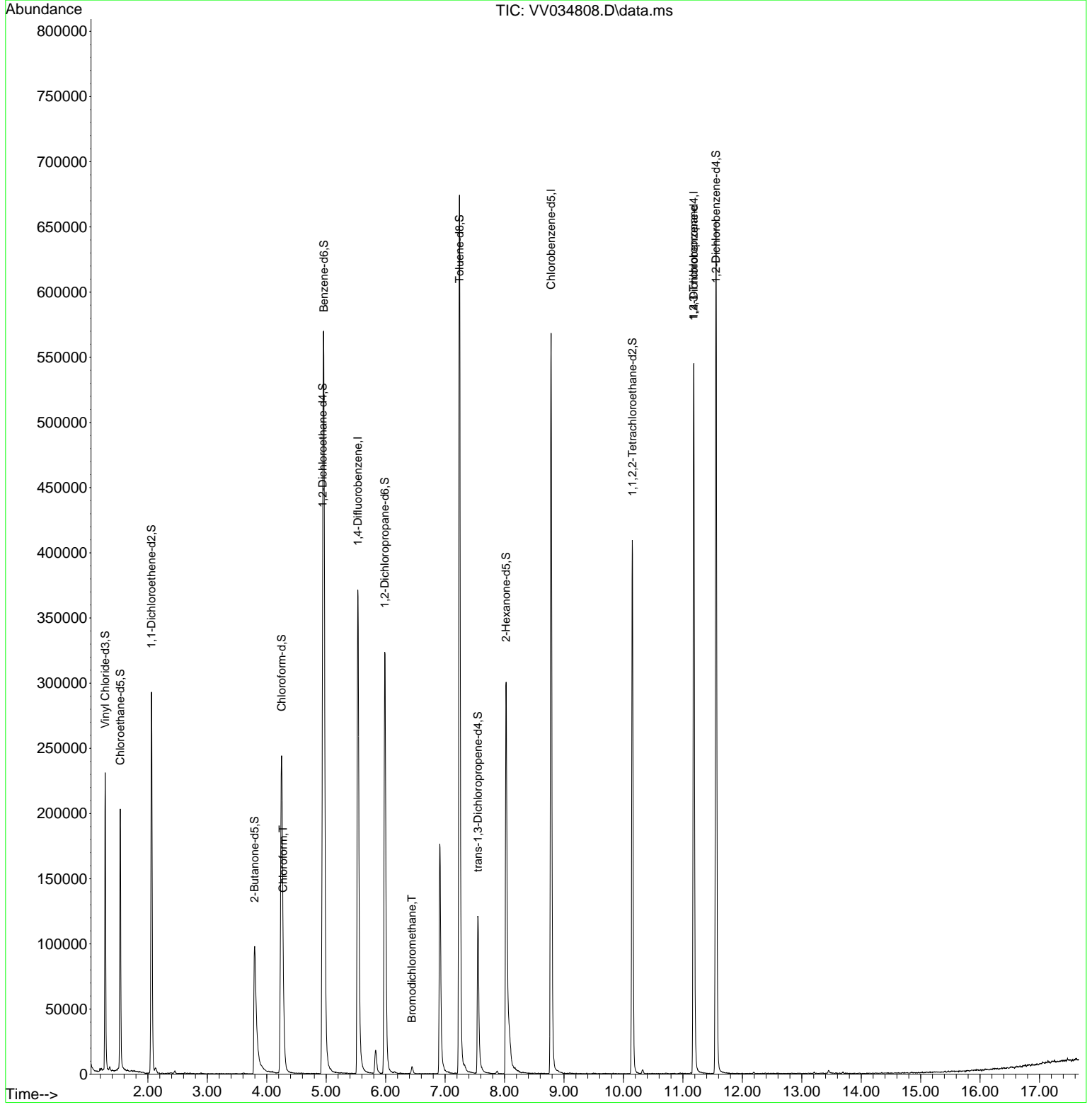
Compound	R.T.	QI on	Response	Conc	Units	Dev(Min)
Internal Standards						
1) 1,4-Difluorobenzene	5.532	114	326131	50.000	ug/L	0.00
28) Chlorobenzene-d5	8.783	117	304724	50.000	ug/L	0.00
58) 1,4-Dichlorobenzene-d4	11.185	152	142445	50.000	ug/L	0.00
System Monitoring Compounds						
4) Vinyl Chloride-d3	1.282	65	148489	52.521	ug/L	0.00
Spike Amount	50.000	Range	60 - 135	Recovery	=	105.040%
7) Chloroethane-d5	1.536	69	121140	54.999	ug/L	0.00
Spike Amount	50.000	Range	70 - 130	Recovery	=	110.000%
11) 1,1-Dichloroethane-d2	2.060	65	49908	39.033	ug/L	0.00
Spike Amount	50.000	Range	60 - 125	Recovery	=	78.060%
21) 2-Butanone-d5	3.796	46	181468	95.981	ug/L	0.00
Spike Amount	100.000	Range	40 - 130	Recovery	=	95.980%
24) Chloroform-d	4.249	84	255933	51.199	ug/L	0.00
Spike Amount	50.000	Range	70 - 125	Recovery	=	102.400%
26) 1,2-Dichloroethane-d4	4.941	65	173514	53.118	ug/L	0.00
Spike Amount	50.000	Range	70 - 125	Recovery	=	106.240%
32) Benzene-d6	4.960	84	506952	55.124	ug/L	0.00
Spike Amount	50.000	Range	70 - 125	Recovery	=	110.240%
36) 1,2-Dichloropropane-d6	5.986	67	153930	54.845	ug/L	0.00
Spike Amount	50.000	Range	70 - 120	Recovery	=	109.680%
41) Toluene-d8	7.243	98	443049	53.235	ug/L	0.00
Spike Amount	50.000	Range	80 - 120	Recovery	=	106.460%
43) trans-1,3-Dichloropropene	7.551	79	73454	52.117	ug/L	0.00
Spike Amount	50.000	Range	60 - 125	Recovery	=	104.240%
47) 2-Hexanone-d5	8.024	63	104669	74.683	ug/L	0.00
Spike Amount	100.000	Range	45 - 130	Recovery	=	74.680%
56) 1,1,2,2-Tetrachloroethane	10.149	84	187798	50.846	ug/L	0.00
Spike Amount	50.000	Range	65 - 120	Recovery	=	101.700%
66) 1,2-Dichlorobenzene-d4	11.558	152	162869	55.938	ug/L	0.00
Spike Amount	50.000	Range	80 - 120	Recovery	=	111.880%
Target Compounds						
25) Chloroform	4.275	83	29427	6.132	ug/L	99
38) Bromodichloromethane	6.442	83	4181	1.200	ug/L	95
61) 1,2,3-Trichloropropane	11.181	75	16949	6.233	ug/L #	64

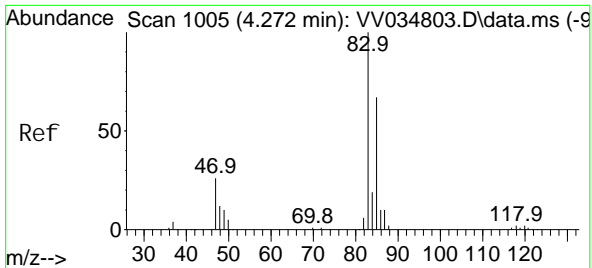
(#) = qualifier out of range (m) = manual integration (+) = signals summed

Data Path : Z:\voasrv\HPCHEM1\MSVOA\_V\Data\VV032224\  
 Data File : VV034808.D  
 Acq On : 22 Mar 2024 10:56  
 Operator : SY/MD  
 Sample : P1822-02  
 Misc : 5.0mL/MSVOA\_V/WATER  
 ALS Vial : 7 Sample Multiplier: 1

**Instrument :**  
 MSVOA\_V  
**ClientSampleId :**

Quant Time: Mar 23 04:58:39 2024  
 Quant Method : Z:\voasrv\HPCHEM1\MSVOA\_V\Method\SFAMVLM022924WMA.M  
 Quant Title : VOC Analysis  
 QLast Update : Sat Mar 23 04:57:15 2024  
 Response via : Initial Calibration

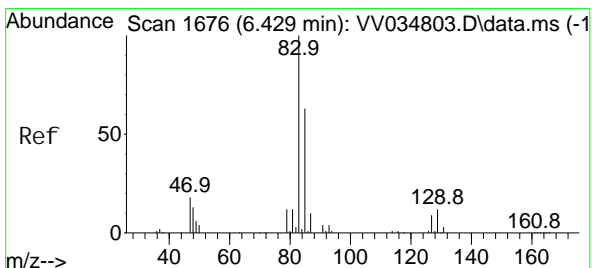
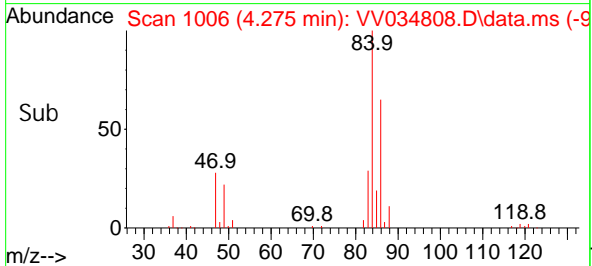
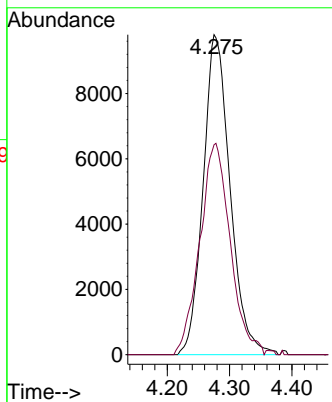
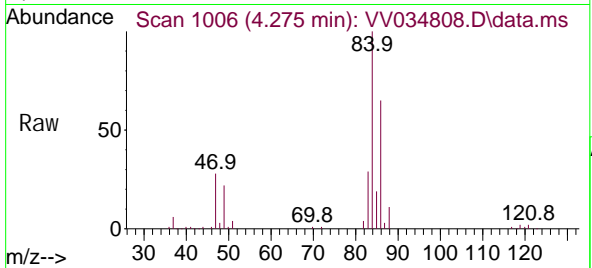




#25  
 Chloroform  
 Concen: 6.132 ug/L  
 RT: 4.275 min Scan# 1005  
 Delta R.T. 0.003 min  
 Lab File: VV034808.D  
 Acq: 22 Mar 2024 10:56

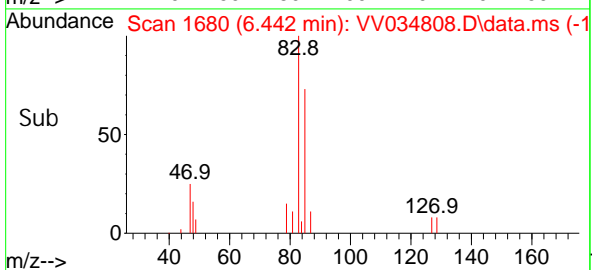
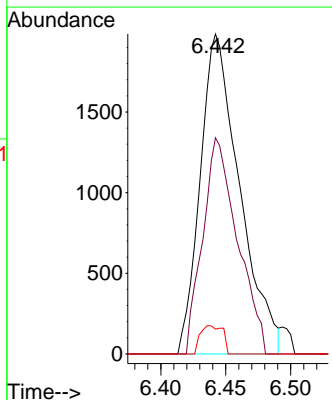
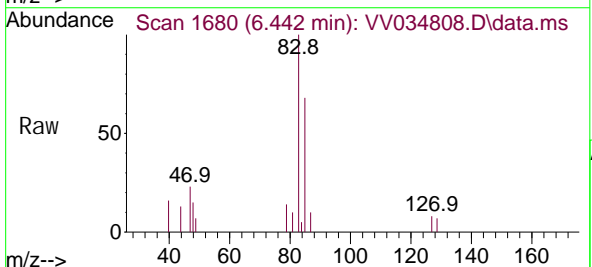
Instrument : MSVOA\_V  
 ClientSampleId :

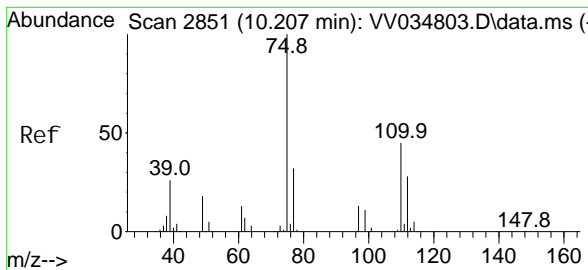
Tgt Ion: 83 Resp: 29427  
 Ion Ratio Lower Upper  
 83 100  
 85 65.6 45.5 84.5



#38  
 Bromodi chloromethane  
 Concen: 1.200 ug/L  
 RT: 6.442 min Scan# 1680  
 Delta R.T. 0.013 min  
 Lab File: VV034808.D  
 Acq: 22 Mar 2024 10:56

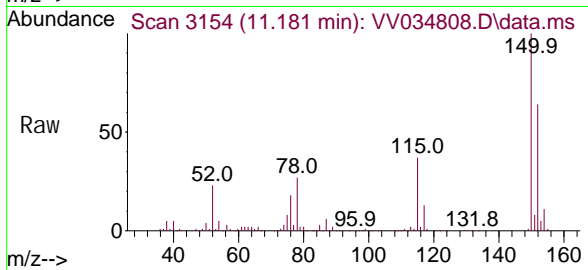
Tgt Ion: 83 Resp: 4181  
 Ion Ratio Lower Upper  
 83 100  
 85 67.5 44.6 82.8  
 127 7.7 6.9 10.3





#61  
 1, 2, 3-Tri chl oropropane  
 Concen: 6.233 ug/L  
 RT: 11.181 min Scan# 31  
 Del ta R.T. 0.974 min  
 Lab File: VV034808.D  
 Acq: 22 Mar 2024 10:56

Instrument :  
 MSVOA\_V  
 ClientSampleId :



Tgt Ion: 75 Resp: 16949

Ion	Ratio	Lower	Upper
75	100		
77	35.0	25.9	38.9
110	3.3	33.1	49.7#

